

GLOBAL OVERVIEW | SELECTED INDICES

SOUTH AFRICAN INDICES	CLOSE	PREVIOUS	1D%	5D%	1M%	YTD%
All Share	74513.93	74010.83	0.68	2.08	1.72	-3.09
Top 40	68573.48	68050.58	0.77	2.50	2.31	-2.73
Financial 15	15836.49	15896.66	-0.38	2.94	-4.15	-11.39
Industrial 25	104012.64	102805.77	1.17	6.33	3.21	0.29
Resource 10	60443.89	59612.59	1.39	-4.63	8.10	5.06
Mid Cap	75608.28	75598.19	0.01	-1.32	-2.03	-5.98
Small Cap	70230.42	70237.57	-0.01	-0.17	-0.69	-3.12
Banks	9815.67	9840.12	-0.25	4.31	-2.47	-10.35
Retailers	5482.54	5448.33	0.63	-0.25	-6.77	-12.05
Property (J253) - TR	1854.43	1854.54	-0.01	-0.95	-3.62	-0.50

AMERICAN INDICES	CLOSE	PREVIOUS	1D%	5D%	1M%	YTD%
Dow Jones	38460.92	38503.69	-0.11	1.87	-2.57	2.05
Nasdaq	15712.75	15696.64	0.10	0.19	-4.36	4.67
S&P 500	5071.63	5070.55	0.02	0.98	-3.11	6.33
US VIX	15.97	15.69	1.78	-12.30	22.28	28.27

EUROPEAN INDICES	CLOSE	PREVIOUS	1D%	5D%	1M%	YTD%
CAC 40	8091.86	8105.78	-0.17	1.38	-0.74	7.27
DAX 30	18088.70	18137.65	-0.27	1.79	-0.64	7.98
Eurostoxx 50	4988.70	5015.40	-0.53	1.22	-0.84	10.33
FTSE	8040.38	8044.81	-0.06	2.45	1.38	3.97

ASIAN INDICES	CLOSE	PREVIOUS	1D%	5D%	1M%	YTD%
Hang Seng	17201.27	16828.93	2.21	5.84	4.25	0.90
Nikkei 225	38460.08	37552.16	2.42	1.31	-5.94	14.93
Shanghai	3044.82	3021.98	0.76	-0.86	-0.11	2.35

EARLY MORNING MARKETS	LAST	CLOSE	% CHG	1D%	5D%	YTD%
TENCENT	339.80	344.20	-1.28	3.55	14.43	17.23
BHP AUS	4523.00	4550.00	-0.59	0.18	2.39	-9.74

NOTE : 5D% and 1M% are rolling percentage moves

INTERNATIONAL ECONOMIC CALENDAR | SELECTED EVENTS

TIME	AREA	TODAY'S EVENTS & RELEASES	PERIOD	EXP.	PREV.
11:30	ZA	PPI m/m	Mar	0.3%	0.5%
14:30	US	Advance GDP q/q	Q1	2.3%	3.4%
14:30	US	Advance GDP Price Index q/q	Q1	2.9%	1.7%
14:30	US	Unemployment Claims	Q1	214K	212K
16:00	US	Pending Home Sales m/m	Mar	0.9%	1.6%

TIME	AREA	PREVIOUS SESSION'S RELEASES	PERIOD	EXP.	ACT.
10:00	DE	Ifo Business Climate	Apr	88.9	89.4
14:30	US	Durable Goods Orders m/m	Mar	2.2%	2.6%
---	---	---	---	---	---
---	---	---	---	---	---
---	---	---	---	---	---

JSE ALL SHARE | BEST AND WORST ONE-DAY PERFORMERS

BEST ONE-DAY % PERFORMERS	CODE	CLOSE	1D%	5D%	YTD%
RCL Foods Limited	RCL	1019	6.70	1.90	19.74
PPC Limited	PPC	323	4.87	-0.31	-19.05
Shoprite Holdings Ltd	SHP	24250	4.50	6.75	-11.83
Quilter Plc	QLT	2520	4.22	8.06	3.79
Anglo American plc	AGL	51379	3.38	-0.16	8.51
Kumba Iron Ore Ltd	KIO	46100	3.33	-2.47	-25.01

WORST ONE-DAY % PERFORMERS	CODE	CLOSE	1D%	5D%	YTD%
Sun International Ltd	SUI	3580	-5.52	-1.24	-12.68
Tsogo Sun Limited	TSG	1112	-3.81	2.02	-9.22
Cashbuild Ltd	CSB	14700	-3.29	2.44	-11.94
Discovery Ltd	DSY	10932	-3.14	0.23	-23.91
Hammerson plc	HMN	635	-2.91	2.75	-6.62

DIVIDEND DATA

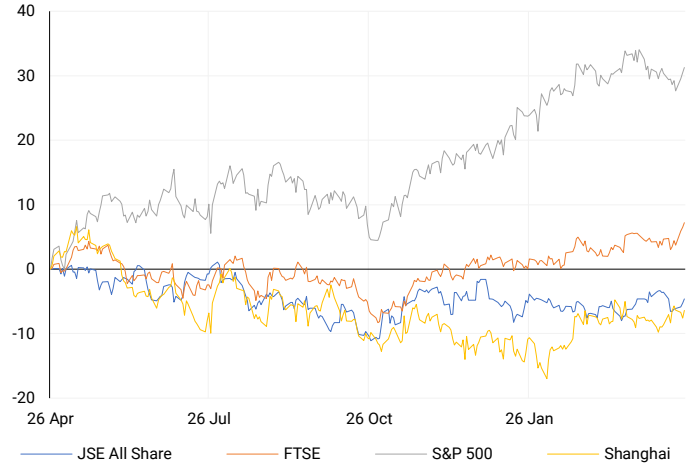
COMPANY	CODE	EXPECTED DIVIDEND	COMPANY	CODE	EXPECTED DIVIDEND
Anheuser-Busch InBev	ANH	82 EURc	---	---	---
---	---	---	---	---	---
---	---	---	---	---	---
---	---	---	---	---	---
---	---	---	---	---	---

SOURCES | JSE, IRESS, MONEYWEB, CNBC, BBC, CNN

PLEASE SEE THE BOTTOM OF THE LAST PAGE FOR THE FULL DISCLAIMER

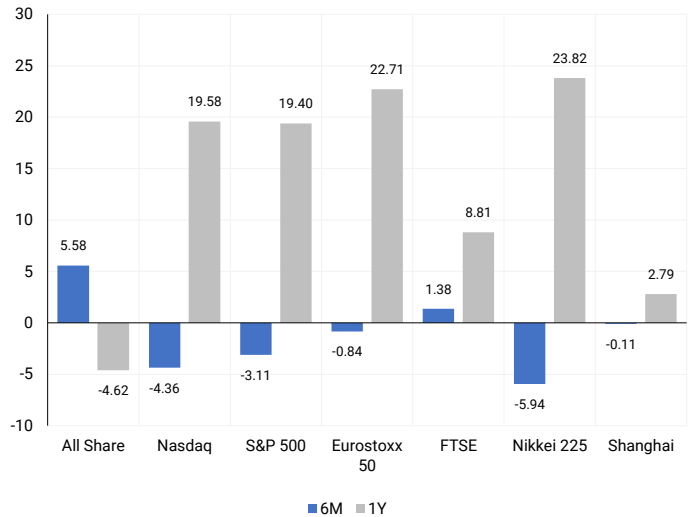
INTERNATIONAL INDICES

Normalised percentage performances - In rand terms



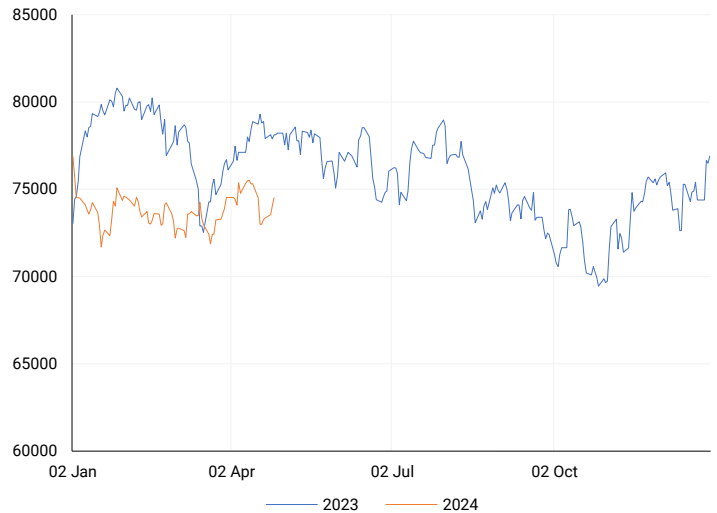
INTERNATIONAL INDICES

6-month & 1-year percentage performances



JSE ALL SHARE INDEX

2023 v 2024 to date



Last date to trade Tue, 30 April

## LOCAL EQUITIES | JSE LARGE CAP COMPANIES (Cents Per Share)

COMPANY	CLOSE	PREVIOUS	1D%	5D%	1M%	YTD%
Absa Group Limited	13820	14112	-2.07	0.30	-6.66	-15.58
Anglo American plc	51379	49700	3.38	-0.16	10.51	8.51
Anglo American Plat Ltd	68275	68800	-0.76	-14.62	-13.93	-29.18
Anglogold Ashanti Ltd	42215	42455	-0.57	-8.48	5.83	19.45
Anheuser-Busch InBev SA NV	114979	114033	0.83	5.68	1.61	-4.20
BHP Group Limited	56551	55495	1.90	0.87	3.74	-10.72
BID Corporation Ltd	42600	42198	0.95	2.54	-6.41	-0.15
British American Tob plc	56053	56200	-0.26	4.01	-1.75	3.51
Compagnie Fin Richemont	272690	270700	0.74	-0.51	-4.47	6.20
Capitec Bank Hldgs Ltd	215746	217378	-0.75	8.88	3.80	6.47
Discovery Ltd	10932	11286	-3.14	0.23	-13.92	-23.91
Firststrand Ltd	6196	6176	0.32	4.79	-0.06	-15.71
Gold Fields Ltd	32548	31977	1.79	-3.50	13.28	17.17
Glencore plc	11341	11068	2.47	1.31	10.16	1.58
Impala Platinum Hlgs Ltd	8873	8929	-0.63	-10.99	8.91	-2.78
Kumba Iron Ore Ltd	46100	44614	3.33	-2.47	-0.82	-25.01
Mondi plc	35868	35745	0.34	11.59	10.10	-1.19
MTN Group Ltd	8327	8299	0.34	3.48	-7.85	-27.90
Naspers Ltd -N-	367560	359854	2.14	14.81	18.75	17.51
Prosus N.V.	64212	63500	1.12	11.09	13.45	14.58
South32 Limited	4096	4066	0.74	0.76	13.75	-2.92
Standard Bank Group Ltd	17225	17184	0.24	3.10	-6.45	-17.23
Shoprite Holdings Ltd	24250	23206	4.50	6.75	-3.38	-11.83
Sanlam Limited	6537	6487	0.77	2.12	-6.43	-10.21
Sasol Limited	13400	13551	-1.11	-15.03	-7.03	-27.68
Sibanye Stillwater Ltd	2277	2264	0.57	-11.54	4.98	-8.55
Vodacom Group Ltd	8905	8922	-0.19	1.88	-8.05	-15.99

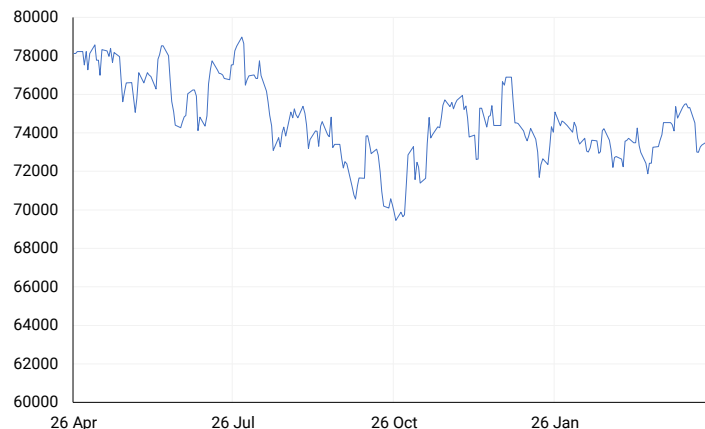
## SOUTH AFRICAN MARKET SUMMARY

### SELECTED ITEMS

On Wednesday, the Top-40 index closed with a 0.77% gain, while domestic economic data releases were absent. March producer price inflation is set to be released today. Zeder reported a 28.9% drop in profit for the full year ended 29 February, mainly due to a reversal of impairment on loans and advances from the previous year. PSG Financial Services Limited released its full-year results, highlighting impressive performance despite challenging market conditions. The group credited its growth to a healthy new business pipeline, attracting inflows from both existing and new clients.

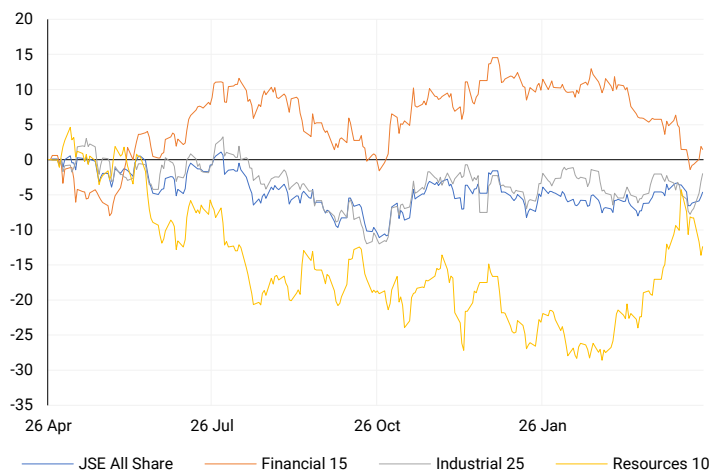
### JSE TOP 40

One-year



### LOCAL INDICES

Normalised percentage performances



### LOCAL SENS ANNOUNCEMENTS

#### SELECTED RELEASE

##### GLOBE TRADE CENTRE S.A. – Audited 2023 Results

In 2023, revenues from rental activity for the company increased by 10% to EUR 183 million compared to EUR 167 million in 2022. The gross margin from rental activity also saw growth, rising by 8% to EUR 128 million in 2023 compared to EUR 119 million in 2022. FFO I reached EUR 71 million in 2023, up from EUR 68 million in 2022, with FFO per share at EUR 0.12 after adjustments for one-off tax and other expenses of EUR 6 million. EPRA NTA stood at EUR 1,232 million as of December 31, 2023, compared to EUR 1,273 million in the previous year, with EPRA NTA per share at EUR 2.15 (PLN 9.33). The net LTV increased to 49.3% from 44.5% as of December 31, 2022. The company had EUR 60 million in cash, along with cash designated for specific purposes such as the acquisition of GTC bonds and construction activities. Profit after tax amounted to EUR 12.4 million, with a profit per share of EUR 0.02.

GTC | 0.00% OPEN | 4000c HIGH | 4000c LOW | 4000c CLOSE | 4000c TIME | 07:05

##### QUILTER PLC – First Quarter 2024 Trading Statement

Key highlights from Quilter plc's performance in the first quarter of 2024 include a 5% increase in Group Assets under Management and Administration (AuMA) to £111.6 billion, driven by improved net inflows and higher equity markets, partially offset by rising bond yields. Core net inflows doubled to £810 million compared to the prior year, with strong performance in the Quilter channel and Platform proposition. The Quilter Platform delivered net inflows of over £1.0 billion, the highest since early 2018. Non-core net outflows were consistent with the previous year, resulting in reported net inflows of £707 million. Persistency levels remained stable, and productivity increased, with annualised gross sales per Quilter Adviser up 22% on the comparable period.

QLT | 4.22% OPEN | 2445c HIGH | 2560c LOW | 2445c CLOSE | 2520c TIME | 08:00

##### ZEDER INVESTMENTS LIMITED – Reviewed Condensed Results

Condensed results for the year ended 29 February 2024 show a decrease in net asset value per share (NAVPS) to R2.48, down 4.6% from the previous year, primarily due to special dividends paid. Attributable earnings per share improved to 0.8 cents from a loss of 12.1 cents, driven by changes in the valuation of unlisted investments. Headline earnings per share also improved to 0.8 cents from a loss of 12.1 cents. Profit before taxation from continued operations decreased by 28.9% to R27m. Special dividends of 15.0 cents per share were paid during the year, with no ordinary dividends declared. Zeder's Sum-of-the-Parts value per share decreased to R2.29 as of April 10, 2024, mainly due to a special dividend paid subsequent to year end.

ZED | -5.41% OPEN | 184c HIGH | 184c LOW | 175c CLOSE | 175c TIME | 07:05

### EXPECTED COMPANY REPORTING SCHEDULE

COMPANY	CODE	RELEASE	DATE
Clicks	CLS	Interim	25 Apr'24
Alphamin	APH	Quarterly	29 Apr'24
Pick n Pay	PIK	Final	03 May'24
Karoo	KRO	Final	08 May'24
Sappi	SAP	Interim	10 May'24

### BANK AND OTHER SELECTE PREFERENCE SHARES

COMPANY	CODE	CLOSE	CLEAN YIELD	NEXT LDT (Est.)
Investec Limited	INPR	8499	11.24	Thu, 06 Jun '24
Standard Bank	SBPP	8250	11.15	Thu, 05 Sep '24
Absa	ABSP	71500	11.48	Thu, 12 Sep '24
Capitec	CPIP	10200	9.69	Thu, 19 Sep '24
Steinhoff	SHFF	9355	10.47	Thu, 17 Oct '24
Grindrod	GNDP	8630	12.22	Thu, 19 Sep '24
Netcare	NTCP	8243	11.82	Thu, 31 Oct '24
Discovery	DSBP	9990	11.91	Thu, 19 Sep '24
Invicta	IVTP	9800	13.41	Thu, 27 Jun '24

**LOCAL EQUITIES | JSE MID CAP COMPANIES** (Cents Per Share)

COMPANY	CODE	CLOSE	PREVIOUS	1D%	1M%	YTD%
Aspen Pharmacare Hldgs Ltd	APN	21631	21374	1.20	0.49	6.29
African Rainbow Min Ltd	ARI	18547	18494	0.29	11.82	-7.27
AVI Ltd	AVI	8521	8546	-0.29	-6.36	3.83
Barloworld Ltd	BAW	8582	8509	0.86	40.69	8.63
Bidvest Ltd	BVT	23460	23380	0.34	-4.64	-7.01
Bytes Technology Grp PLC	BYI	11577	11550	0.23	-7.09	-19.16
Capital&Counties Prop plc	CCO	3186	3216	-0.93	-4.90	-1.97
Clicks Group Ltd	CLS	28675	28657	0.06	-3.59	-11.96
Dis-Chem Pharmacies Ltd	DCP	3062	3066	-0.13	-9.44	-0.23
Distell Group Hldgs Ltd	DGH	92	92	0.00	-2.13	6.98
Exxaro Resources Ltd	EXX	17987	17792	1.10	2.71	-12.04
Fortress Real Est INV A	FFA	18.35	18.36	-0.05	-2.19	-98.67
Fortress Real Est INV B	FFB	1425	1419	0.42	-8.18	100.70
Growthpoint Prop Ltd	GRT	1025	1027	-0.19	-8.81	-12.24
Harmony GM Co Ltd	HAR	16869	16620	1.50	13.76	41.06
Hammerson plc	HMN	635	654	-2.91	-2.46	-6.62
Investec Ltd	INL	11950	11903	0.39	-3.40	-4.85
Investec plc	INP	12104	12081	0.19	-2.79	-3.90
Italtile Ltd	ITE	955	954	0.10	-2.85	-14.73
Life Healthc Grp Hldgs Ltd	LHC	1030	1020	0.98	-38.21	-43.93
MultiChoice Group Ltd	MCG	11724	11700	0.21	6.41	44.71
Mediclinic Int plc	MEI	22	21.5	2.33	-8.33	-15.38
Montauk Renewables Inc	MKR	6912	7000	-1.26	-16.22	-59.81
Mr Price Group Ltd	MRP	15962	15763	1.26	-8.31	1.79
Momentum Met Hldgs Ltd	MTM	2015	2045	-1.47	-2.89	-7.95
Ninety One Plc	N91	3941	3958	-0.43	-1.97	-8.60
Nedbank Group Ltd	NED	21733	21850	-0.54	-5.51	0.51
Northam Platinum Hldgs Ltd	NPH	13130	13301	-1.29	12.44	-6.50
NEPI Rockcastle N.V.	NRP	12550	12514	0.29	-3.56	-0.70
Netcare Limited	NTC	1145	1132	1.15	-1.72	-19.59
Ninety One Limited	NY1	3849	3860	-0.28	-3.15	-10.43
Old Mutual Limited	OMU	1012	1024	-1.17	-12.98	-22.51
OUTsurance Group Ltd	OUT	3901	3901	0.00	-7.49	-7.56
Pick n Pay Stores Ltd	PIK	1905	1919	-0.73	3.08	-18.13
Pepkor Holdings Ltd	PPH	1716	1719	-0.17	-7.34	-12.58
Quilter Plc	QLT	2520	2418	4.22	-0.40	3.79
Redefine Properties Ltd	RDF	369	370	-0.27	-8.44	-4.16
Remgro Ltd	REM	11766	12100	-2.76	-3.81	-27.58
Resilient REIT Limited	RES	4142	4170	-0.67	-10.69	-6.48
Reinet Investments S.C.A	RNI	43789	43821	-0.07	-4.36	-6.07
Sappi Ltd	SAP	5194	5195	-0.02	5.57	17.51
Santam Limited	SNT	29833	29600	0.79	0.56	4.10
The Spar Group Ltd	SPP	9264	9306	-0.45	6.99	-21.42
Sirius Real Estate Ltd	SRE	2267	2279	-0.53	2.72	2.35
Tiger Brands Ltd	TBS	19250	19300	-0.26	-5.91	-4.37
Transaction Capital Ltd	TCP	279	279	0.00	-0.58	-65.04
The Foschini Group Limited	TFG	9536	9460	0.80	-6.80	-14.06
Thungela Resources Ltd	TGA	13337	13064	2.09	11.74	-13.28
Telkom SA SOC Ltd	TKG	2435	2465	-1.22	-10.74	-18.12
Truworths Int Ltd	TRU	7300	7354	-0.73	-6.17	-1.82
Woolworths Holdings Ltd	WHL	5699	5604	1.70	-6.27	-21.07
Zeda Limited	ZZD	1159	1135	2.11	8.32	-9.10

**LOCAL EQUITIES | JSE SMALL CAP COMPANIES** (Cents Per Share)

COMPANY	CODE	CLOSE	PREVIOUS	1D%	1M%	YTD%
ArcelorMittal SA Limited	ACL	120	117	2.56	0.84	-26.83
ADVTECH Ltd	ADH	2820	2801	0.68	-0.67	14.91
Altron Limited A	AEL	1150	1125	2.22	4.55	12.20
AECI Limited	AFE	9389	9394	-0.05	1.07	-14.40
Alexander Forbes Grp Hldgs	AFH	621	630	-1.43	-1.58	-5.91
Afrimat Limited	AFT	6350	6350	0.00	10.28	0.79
African Rainbow Cap Inv	AIL	524	520	0.77	3.56	7.16
Adcock Ingram Hldgs Ltd	AIP	5550	5500	0.91	0.47	-7.65
Astral Foods Ltd	ARL	14023	14195	-1.21	-2.63	-4.33
Attacq Limited	ATT	1016	1021	-0.49	-3.88	10.20
Brait PLC	BAT	127	130	-2.31	-5.22	-30.22
Blue Label Telecoms Ltd	BLU	418	414	0.97	-1.65	7.73
Coronation Fund Mngrs Ld	CML	3005	3000	0.17	0.07	-3.56
Curro Holdings Limited	COH	1060	1055	0.47	-3.64	-9.01
Cashbuild Ltd	CSB	14700	15200	-3.29	10.53	-11.94
DRD Gold Ltd	DRD	1535	1536	-0.07	0.20	-2.66
Datatec Ltd	DTC	3510	3506	0.11	-8.21	-13.33
Emira Property Fund Ltd	EMI	940	946	-0.63	10.59	9.94
Equites Prop Fund Ltd	EQU	1160	1167	-0.60	-7.57	-16.85
Famous Brands Ltd	FBR	5266	5122	2.81	-3.32	-9.10
Fairvest Limited B	FTB	341	342	-0.29	-6.58	-0.87
Grindrod Ltd	GND	1300	1282	1.40	3.17	13.44
Hosken Cons Inv Ltd	HCI	17227	17115	0.65	1.42	-14.97
Hudaco Industries Ltd	HDC	16570	16110	2.86	4.36	3.16
Hyprop Inv Ltd	HYP	2745	2777	-1.15	-6.03	-11.76
Investec Property Fund Ltd	IPF	664	660	0.61	-12.63	-17.00
JSE Ltd	JSE	8316	8359	-0.51	-5.50	-10.04
KAP Industrial Hldgs Ltd	KAP	257	259	-0.77	-3.02	-1.91
Karooooo Ltd	KRO	52551	52526	0.05	2.26	10.64
PSG Konsult Limited	KST	1500	1506	-0.40	1.28	-2.28
Libstar Holdings Ltd	LBR	392	395	-0.76	12.32	12.00
Lighthouse Properties plc	LTE	807	796	1.38	0.88	9.80
Industrials REIT Limited	MLI	0.6	0.6	0.00	20.00	-14.29
MAS P.L.C	MSP	1573	1578	-0.32	-2.36	-9.13
Metair Investments Ltd	MTA	1131	1156	-2.16	-14.19	-36.28
Motus Holdings Ltd	MTH	8100	8060	0.50	-7.92	-20.20
Murray & Roberts Hldgs	MUR	113	115	-1.74	-2.59	-24.16
Oceana Group Ltd	OCE	7300	7293	0.10	2.82	3.30
Omnia Holdings Ltd	OMN	5351	5445	-1.73	-10.52	-18.14
Pan African Resource plc	PAN	563	549	2.55	11.49	37.65
PPC Limited	PPC	323	308	4.87	-4.72	-19.05
Raubex Group Ltd	RBX	2975	2960	0.51	-5.07	7.32
RFG Holdings Limited	RFG	1286	1339	-3.96	-6.61	-4.74
Reunert Ltd	RLO	6380	6386	-0.09	-3.29	6.44
SA Corp Real Estate Ltd	SAC	251	250	0.40	0.00	8.19
Super Group Ltd	SPG	2640	2686	-1.71	1.23	-11.26
Stor-Age Prop REIT Ltd	SSS	1318	1313	0.38	-2.59	0.92
Southern Sun LTD	SSU	500	507	-1.38	-1.96	-4.76
Sun International Ltd	SUI	3580	3789	-5.52	-0.69	-12.68
Tharisa plc	THA	1595	1595	0.00	22.50	5.56
Tsogo Sun Gaming Ltd	TSG	1112	1156	-3.81	0.72	-9.22
Vukile Property Fund Ltd	VKE	1466	1460	0.41	0.27	3.82
Wilson Bayly Hlm-Ovc Ltd	WBO	13500	13370	0.97	-2.81	3.80

**10-YEAR BOND YIELD | SELECTED ITEMS** (Basis Point Change)

REGION	YIELD	1D	1M	1Y
United States	4.64%	4	45	--
United Kingdom	4.33%	9	41	56
Germany	2.59%	9	26	8
Japan	0.88%	0	15	--
South African 10Y	11.05%	8	58	82

**SOUTH AFRICAN 10-YEAR**

2023 vs 2024 to date

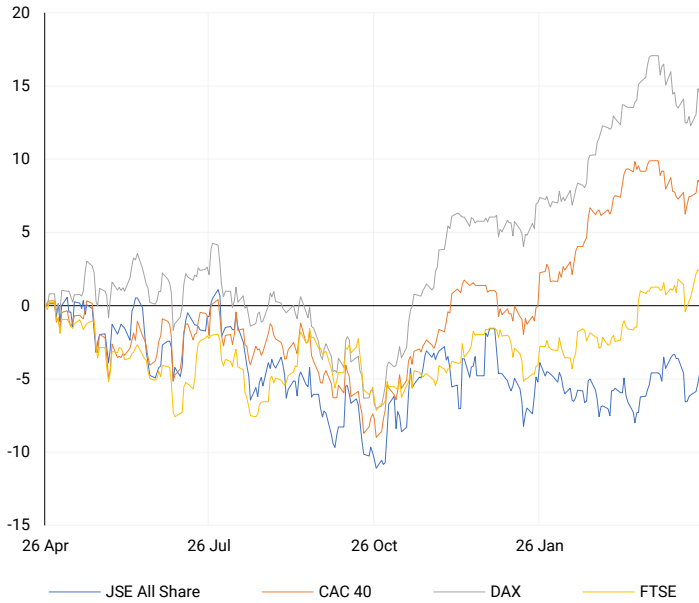


**GLOBAL INTEREST RATES | SELECTED ITEMS**

REGION	DATE CHANGED	CURRENT RATE
United States	26 Jul '23	5.25%-5.50%
United Kingdom	03 Aug '23	5.25%
European	27 Jul '23	4.25%
SA Repo Rate	25 May '23	8.25%
SA Prime Rate	25 May '23	11.75%

## EUROPEAN INDICES

Normalised percentage performances



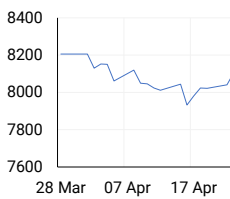
## EUROPEAN MARKET SUMMARY

### SELECTED ITEMS

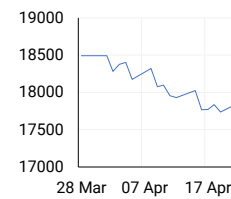
European markets ended lower on Wednesday, reversing earlier gains, as investor optimism waned amid uncertainty over potential interest rate cuts by central banks. Wall Street's tech earnings and anticipation of rate cuts in Europe had boosted markets earlier in the week, particularly benefiting U.K. stocks. However, Bank of England Chief Economist Huw Pill's comments tempered expectations of imminent cuts. The pan-European Stoxx 600 index closed 0.43% lower, with tech stocks gaining 1.3% while financial services dropped 1.9%. The U.K.'s FTSE 100 snapped a five-day winning streak, closing 0.06% lower after briefly turning negative at the end of the session.

EUROPEAN INDICES	CLOSE	PREVIOUS	1D%	5D%	1M%	YTD%
CAC 40	8091.86	8105.78	-0.17	1.38	-0.74	7.27
DAX 30	18088.70	18137.65	-0.27	1.79	-0.64	7.98
Eurostoxx 50	4988.70	5015.40	-0.53	1.22	-0.84	10.33
FTSE	8040.38	8044.81	-0.06	2.45	1.38	3.97

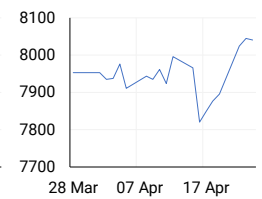
### CAC 40



### DAX

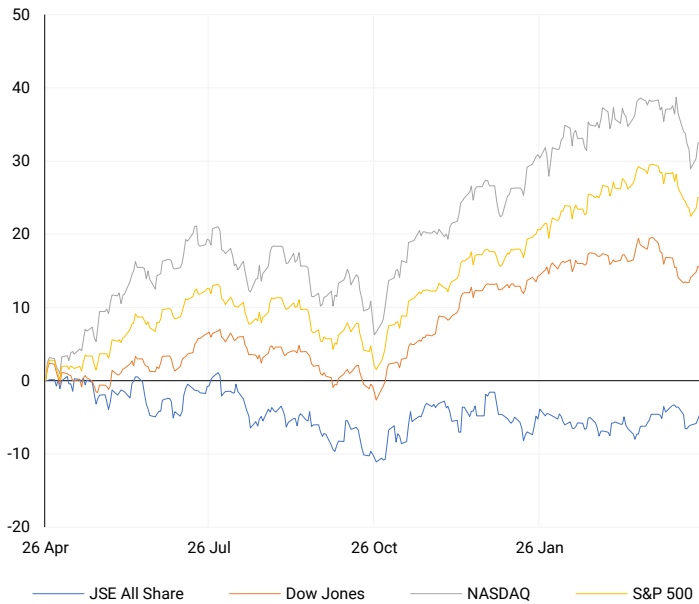


### FTSE



## AMERICAN INDICES

Normalised percentage performances



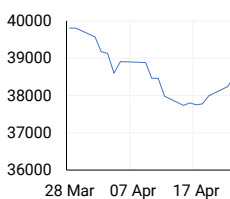
## AMERICAN MARKET SUMMARY

### SELECTED ITEMS

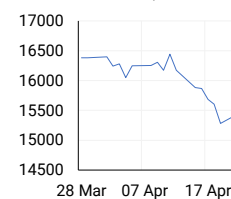
In the U.S. overnight, the three major indices remained stagnant as concerns over rising interest rates overshadowed the positive impact of strong corporate earnings. Investors are now focused on upcoming economic data, including first-quarter gross domestic product figures and March's personal consumption expenditures, following a hotter-than-expected consumer price inflation report for March, which shifted expectations regarding the timing of potential interest rate cuts by the Federal Reserve.

AMERICAN INDICES	CLOSE	PREVIOUS	1D%	5D%	1M%	YTD%
Dow Jones	38460.92	38503.69	-0.11	1.87	-2.57	2.05
Nasdaq	15712.75	15696.64	0.10	0.19	-4.36	4.67
S&P 500	5071.63	5070.55	0.02	0.98	-3.11	6.33
US VIX	15.97	15.69	1.78	-12.30	22.28	28.27

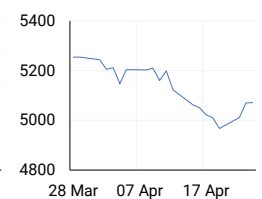
### DOW JONES



### NASDAQ

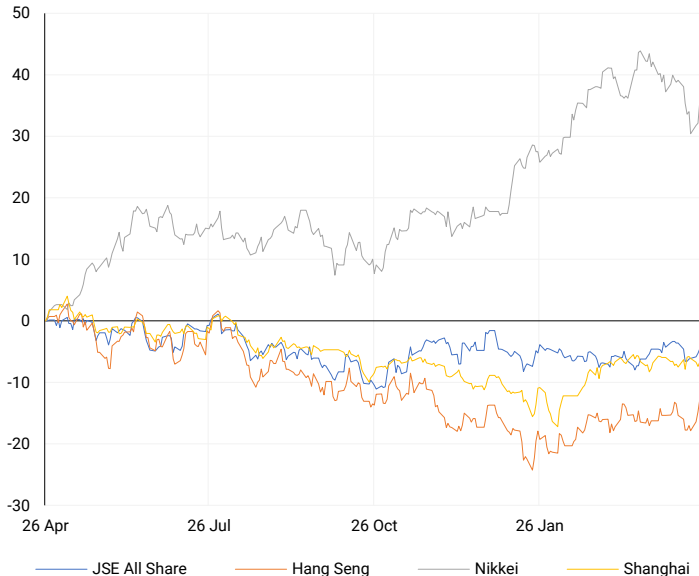


### S&P 500



## ASIAN INDICES

Normalised percentage performances



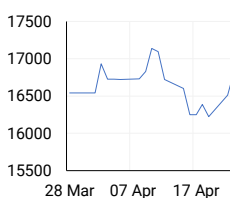
## ASIAN MARKET SUMMARY

### SELECTED ITEMS

After two consecutive days of gains, Asia-Pacific markets paused. In South Korea, investors analysed the country's robust first-quarter GDP growth of 3.4% year-on-year, the highest since late 2021. Meanwhile, attention turned to the Bank of Japan's monetary policy meeting, with investors watching for potential measures to address the yen's persistent weakness. Japan's Nikkei 225 and South Korea's Kospi both declined, while Hong Kong's Hang Seng and China's CSI 300 also ended lower.

ASIAN INDICES	CLOSE	PREVIOUS	1D%	5D%	1M%	YTD%
Hang Seng	17201.27	16828.93	2.21	5.84	4.25	0.90
Nikkei 225	38460.08	37552.16	2.42	1.31	-5.94	14.93
Shanghai	3044.82	3021.98	0.76	-0.86	-0.11	2.35

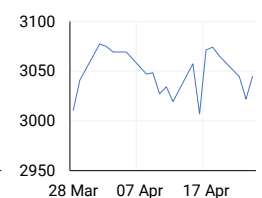
### HANG SENG



### NIKKEI



### SHANGHAI



## COMMODITIES MARKET SUMMARY

### SELECTED ITEMS

Gold prices stabilized on Wednesday as concerns over tensions in the Middle East subsided, while investors awaited U.S. economic data later in the week for insights into the Federal Reserve's interest rate strategy. Conversely, oil prices dipped this morning amid apprehensions of a U.S. economic slowdown and potential delays in interest rate cuts, outweighing concerns about escalating conflict in the Middle East.

COMMODITY	LAST	CLOSE	% CHG	1D%	5D%	YTD%
Brent Crude	88.18	88.10	0.09	-0.40	0.72	14.30
Gold	2316.51	2315.80	0.03	-0.27	-1.91	12.25
Palladium	998.00	1005.00	-0.70	-2.05	-2.80	-8.41
Platinum	910.50	912.20	-0.19	-0.86	-4.24	-7.60
Silver	27.12	27.16	-0.15	-0.52	-3.71	14.18

## BRENT CRUDE

One-year



## PLATINUM

One-year



## GOLD

One-year



CURRENCY PAIR	LAST	CLOSE	% CHG	1D%	5D%	YTD%
USDZAR	19.21	19.22	-0.03	0.58	1.05	4.88
GBPZAR	23.96	23.95	0.01	0.70	1.14	2.83
EURZAR	20.57	20.56	0.07	0.50	1.31	1.82
AUDZAR	12.50	12.48	0.12	0.71	2.07	0.22
EURUSD	1.07	1.07	0.11	-0.04	0.27	-3.08
USDJPY	155.65	155.36	0.19	0.34	0.64	10.15
GBPUSD	1.25	1.25	0.04	0.12	0.09	-2.11
USDCHF	0.91	0.92	-0.09	0.38	0.49	8.75

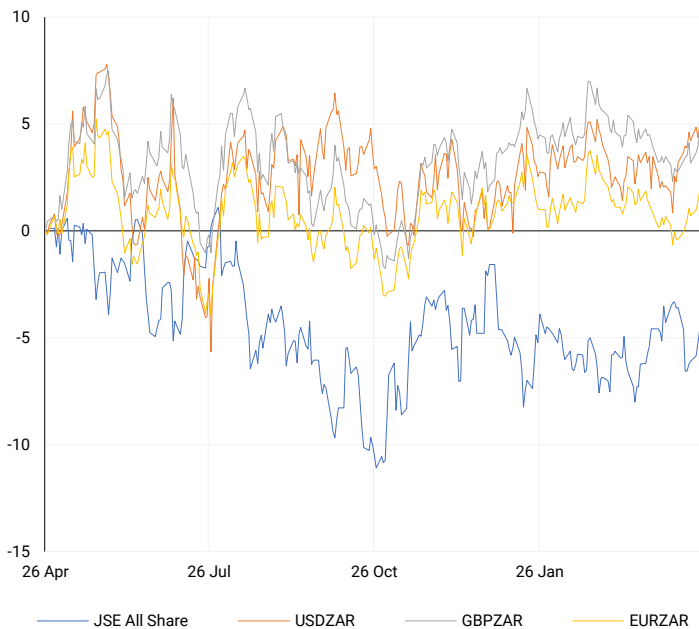
## CURRENCY MARKET SUMMARY

### SELECTED ITEMS

On Wednesday, the South African rand retreated, reversing slight gains from the previous day amidst a resurgence of the dollar, which offset improvements in risk sentiment. The fluctuating expectations regarding U.S. interest rates have driven Treasury yields and the dollar higher, influencing currency markets. The recent decline of the yen to its lowest point in 34 years is expected to present a challenge for Bank of Japan Governor Kazuo Ueda as he navigates monetary policy this week. Balancing the need to gradually transition away from ultra-easy rates while avoiding disruptions to the currency will require a delicate approach.

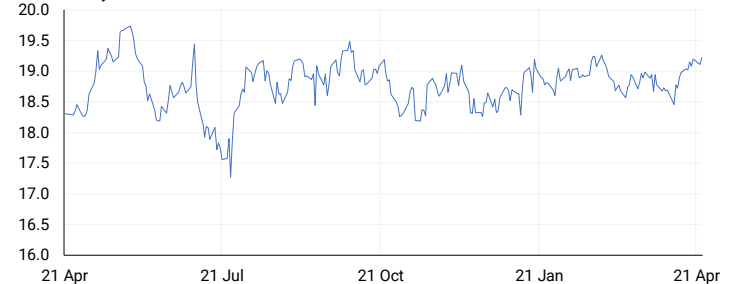
## CURRENCY PAIRS vs JSE ALL SHARE

Normalised percentage performances



## USDZAR

One-year



## EURUSD

One-year



SOURCES | JSE, IRESS, MONEYWEB, CNBC, BBC, CNN

**Disclaimer:** This note is prepared for Sanlam Private Wealth (Pty) Ltd, by K2013143132 (Pty) Ltd trading as ThompsonGreen. ThompsonGreen is an independent company contracted to Sanlam Private Wealth (Pty) Ltd. The views expressed in this note are those of ThompsonGreen and/or its analysts and not necessarily the views of Sanlam Private Wealth (Pty) Ltd, Sanlam or any officer or agent thereof. K2013143132 (Pty) Ltd trading as ThompsonGreen is a research house and not a registered broker, financial adviser or financial service provider. Our editors and customer services teams also do not give personal investment advice. The information in this document is general advice only and may not be appropriate to your particular investment objectives, financial situation or particular needs. Before investing, or if you are in any doubt about your personal situation, you should seek professional advice from a stockbroker or independent financial adviser authorised by the Financial Sector Conduct Authority.