

**GLOBAL OVERVIEW | SELECTED INDICES**

SOUTH AFRICAN INDICES	CLOSE	PREVIOUS	1D%	5D%	1M%	YTD%
All Share	66980,5	67050,5	-0,10	0,28	4,58	12,75
Top 40	60445,8	60524,5	-0,13	0,37	4,86	11,16
Financial 15	13901,1	13849,1	0,38	-1,22	-2,90	15,26
Industrial 25	85827,2	86658,9	-0,96	1,58	3,56	10,18
Resource 10	63454,6	62969,1	0,77	-0,27	10,83	10,21
Mid Cap	77676,2	77497,3	0,23	-0,60	0,39	20,90
Small Cap	63851,2	64041,6	-0,30	-1,48	3,02	43,63
Banks	8093,8	8075,3	0,23	-1,65	-4,19	18,18
General Retailers	7724,1	7583,0	1,86	1,09	1,77	66,09
Property (J253) - TR	1531,1	1533,5	-0,16	0,03	-2,09	24,53

AMERICAN INDICES	CLOSE	PREVIOUS	1D%	5D%	1M%	YTD%
Dow Jones	35741,2	35677,0	0,18	1,37	2,71	16,78
Nasdaq	15226,7	15090,2	0,90	1,36	1,19	18,14
S&P 500	4566,5	4544,9	0,47	1,78	2,49	21,58
Dollar Index	93,9	93,6	0,34	-0,07	0,69	4,44
US VIX	15,2	15,4	-1,23	-6,56	-14,14	-33,01

EUROPEAN INDICES	CLOSE	PREVIOUS	1D%	5D%	1M%	YTD%
CAC 40	6712,9	6733,7	-0,31	0,60	1,12	20,92
DAX 30	15599,2	15543,0	0,36	0,81	0,43	13,71
Eurostoxx 50	4188,3	4188,8	-0,01	0,89	0,72	17,89
FTSE	7222,8	7204,6	0,25	0,26	2,43	11,80

ASIAN INDICES	CLOSE	PREVIOUS	1D%	5D%	1M%	YTD%
Hang Seng	26132,0	26126,9	0,02	2,84	8,02	-4,04
Nikkei 225	28600,4	28804,9	-0,71	-1,46	-5,45	4,21
Shanghai	3609,9	3582,6	0,76	1,17	-0,09	3,94

EARLY MORNING	LAST	CLOSE	% CHG	1D%	5D%	YTD%
Tencent	502,0	505,0	-0,59	-0,88	1,61	-10,78
BHP Billiton	3826,0	3793,0	0,87	0,74	-3,22	-10,61

**INTERNATIONAL ECONOMIC CALENDAR | SELECTED EVENTS**

TIME	AREA	TODAY'S EVENTS & RELEASES	PERIOD	EXP.	PREV.
9:00	RSA	Leading Business Cycle MoM	Aug	-2.2%	-2.5%
12:00	GBP	CBI Realized Sales	Oct	14	11
15:00	USD	HPI m/m	Aug	1.5%	1.4%
16:00	USD	CB Consumer Confidence	Oct	108.4	109.3
16:00	USD	Richmond Manufacturing Index	Oct	4	-3

TIME	AREA	PREVIOUS SESSION'S RELEASES	PERIOD	EXP.	ACT.
10:00	EUR	German ifo Business Climate	Oct	98.2	97.7
12:00	EUR	German Buba Monthly Report	---	---	---
15:00	EUR	Belgian NBB Business Climate	Oct	2.3	4.0
---	---	---	---	---	---
---	---	---	---	---	---

**LOCAL EQUITIES | JSE ALL SHARE COMPANIES**

BEST ONE-DAY % PERFORMERS	CODE	CLOSE	1D%	5D%	YTD%
Textainer	TXT	57158	4,92	1,70	100,56
Sappi	SAP	4365	3,31	1,49	33,00
ADvTECH	ADH	1839	3,03	2,17	93,58
Blue Label Telecoms	BLU	556	2,96	0,18	44,04
Anglo American Plat	AMS	162321	2,81	2,13	12,48
Equites Prop Fund	EQU	2085	2,71	-2,57	20,03
Long 4 Life	L4L	534	2,69	3,69	62,31

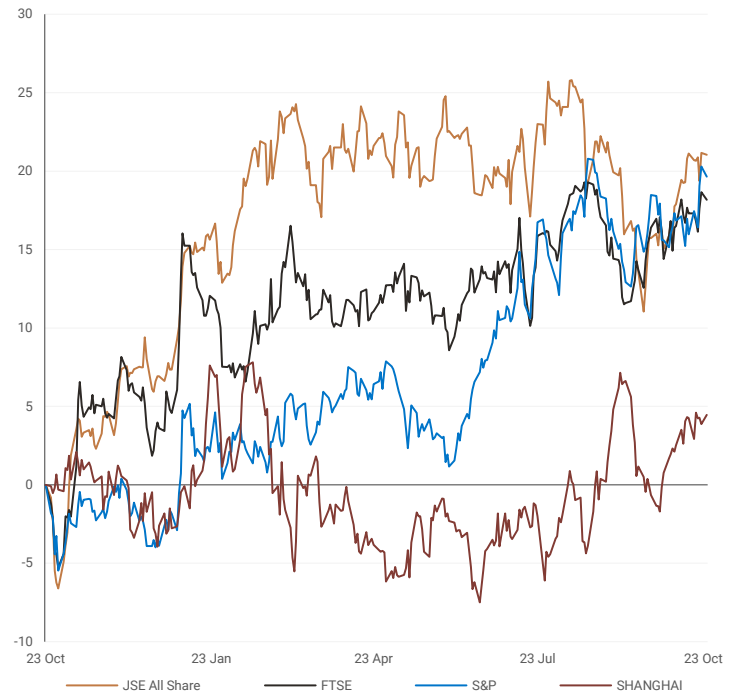
WORST ONE-DAY % PERFORMERS	CODE	CLOSE	1D%	5D%	YTD%
African Rainbow Cap	AIL	500	-7,41	-8,26	12,11
RFG	RFG	1150	-6,81	-2,54	-4,80
Sibanye Stillwater	SSW	5179	-5,08	-6,38	-13,68
Grindrod	GND	508	-5,05	-5,22	0,59
Hudaco Industries	HDC	13292	-4,61	-0,82	64,10
Bytes Technology	BYI	10000	-4,00	-4,53	49,93
EPP N.V.	EPP	1156	-3,26	-1,03	11,69

**DIVIDEND DATA | SELECTED JSE ALL SHARE COMPANIES**

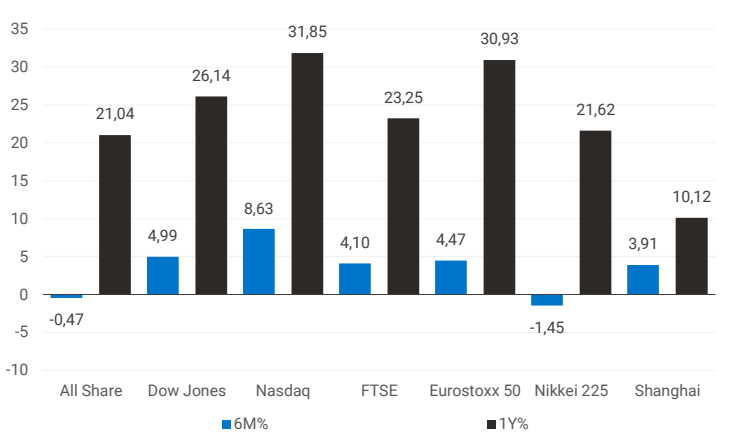
COMPANY	CODE	DIVIDEND
PSG Konsult	KST	10 ZARc
Newpark REIT	NRL	21,66 ZARc
RCL Foods	RCL	30 ZARc
Etion	ETO	33 ZARc
Caxton	CAT	50 ZARc

**INTERNATIONAL INDICES**

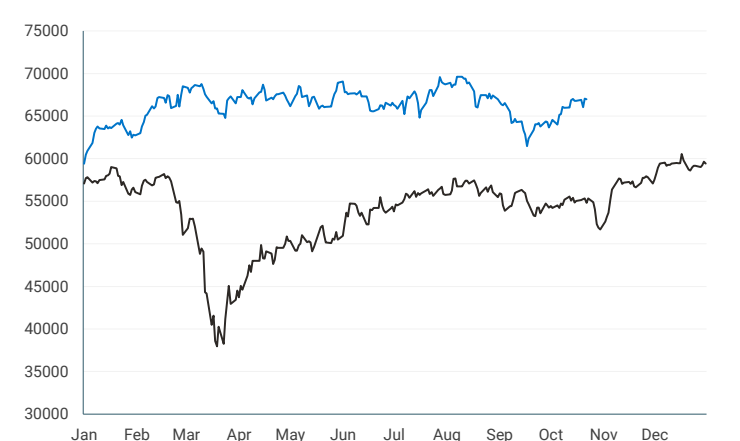
normalised percentage performances (in rand terms)


**INTERNATIONAL INDICES**

6-month &amp; 1-year percentage performances


**JSE ALL SHARE INDEX**

2020 v 2021



Last date to trade 26 Oct

COMPANY	CODE	DIVIDEND
PSG Konsult	KST	10 ZARc
Newpark REIT	NRL	21,66 ZARc
RCL Foods	RCL	30 ZARc
Etion	ETO	33 ZARc
Caxton	CAT	50 ZARc

COMPANY	CLOSE	PREVIOUS	1D%	5D%	1M%	YTD%
Absa Group	14323	14138	1,31	-1,39	-1,10	19,50
Anglo	57344	56197	2,04	0,45	10,35	18,24
Angloplat	162321	157880	2,81	2,13	18,81	12,48
Anglo Gold Ashanti	28940	29226	-0,98	5,83	29,90	-15,51
Anheuser-Busch Inbev	83085	83108	-0,03	2,44	-3,55	-20,03
Bhp Group Plc	40276	39674	1,52	0,31	5,72	3,52
Bid Corp	33102	32908	0,59	1,39	4,49	25,85
British American Tobacco Plc	52270	52900	-1,19	0,33	-2,74	-4,17
Compagnie Financiere	17905	17977	-0,40	3,34	11,73	36,58
Capitec	171941	170104	1,08	1,05	-10,13	20,02
Discovery	13769	13561	1,53	1,34	6,47	-10,32
Firstrand	5723	5764	-0,71	-3,16	-6,88	12,13
Goldfields	14462	14844	-2,57	5,45	20,65	5,12
Glencore Plc	7574	7481	1,24	-4,28	13,76	61,73
Implats	21227	21119	0,51	-4,38	18,59	5,14
Kumba Iron Ore	49500	49505	-0,01	-2,27	-3,87	-20,52
Mondi Plc	36308	36634	-0,89	1,29	-4,38	5,82
Mtn Group	13534	13632	-0,72	-3,33	-0,81	124,85
Naspers -N	259373	266500	-2,67	1,68	4,59	-22,14
Prosus Nv	131376	135254	-2,87	4,60	7,93	-25,88
Stanbank	13717	13623	0,69	-0,60	-2,14	7,94
Shoprite	18501	18412	0,48	1,29	-2,82	32,15
Sanlam	6238	6153	1,38	1,22	-1,22	6,18
Sasol	26240	26290	-0,19	-5,90	5,33	95,92
Sibanye Stillwater	5179	5456	-5,08	-6,38	4,63	-13,68
Vodacom Group	13691	13742	-0,37	-1,30	-7,45	10,07

SELECTED HEADLINES

The Top-40 index was down 0.13% to 60,445.78 yesterday, while the broader all-share closed 0.1% lower at 66,980.45. Shares in miner Sibanye Stillwater fell 5% after the company said it was in talks to buy Santa Rita nickel and Serrote copper mines in Brazil. In other news, South Africa faces an increased risk of power outages because maintenance needs to be carried out at deteriorating coal-fired power stations, the state energy utility said. The availability of electricity from Eskom's plants was lower overall this year than the previous financial year and the current performance is below target, Group Chief Operating Officer Jan Oberholzer said in a presentation on Monday.

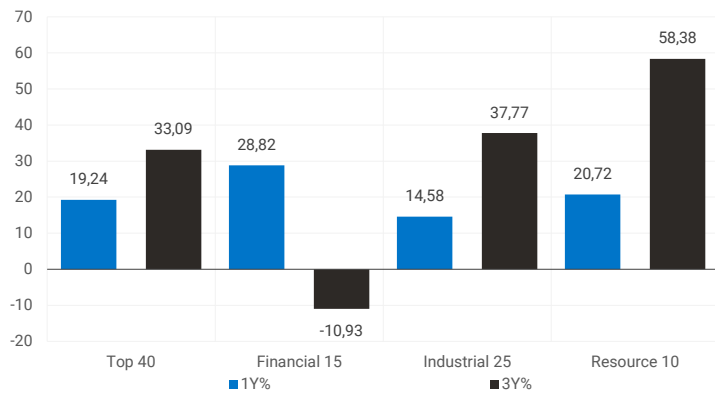
JSE TOP 40 INDEX

last 100 days



LOCAL INDICES

1-year & 3-year percentage performances



SENS ANNOUNCEMENTS

SELECTED RELEASES

Aspen calls for a new special economic zone around its Gqeberha facility

JSE-listed Aspen Pharmacare group CEO Stephen Saad on Monday called for government to look into the development of a new special economic zone (SEZ) around its Gqeberha (formerly Port Elizabeth) manufacturing facility. Saad was speaking at the launch of the group's new general anaesthetics production line at the plant, which now makes it one of the largest manufacturing hubs for the product in the world. Africa's largest pharmaceutical manufacturer has also committed to ramping up its Covid-19 vaccine production capacities to 1.3 billion doses per annum specifically to serve the continent's population. The group's CEO further took a stand against inequitable access to healthcare and committed to minimising this by continuing to invest in the continent. "As a company, we've made a commitment. It's a commitment we really want to try and fulfil. We want to get our vaccine capacities to 1.3 billion doses, this [means] that for every African, there is one vaccine," Saad said. "We are equally committed to providing anaesthetic volumes to ensure no African is ever denied these treatments. Just because others have a manufacturing base and know-how, it doesn't mean we should stand back and not have access ourselves," he added. Approximately 90% of production at the anaesthetic's facility will be exported. However, the company acknowledged that it cannot realise its ambitions without government's support and asked government to consider establishing an industrial park around the facility that will propel further investment into the Eastern Cape province and the growth of the country's economy. Minister of Trade, Industry and Competition Ebrahim Patel said government is open to exploring the viability of establishing a new industrial zone in the province, saying that "the opportunity now exists to have the plant spawning an ecosystem of suppliers" throughout the pharmaceutical value chain. Early in September, Department of Trade, Industry and Competition (Dtic) acting deputy director-general of spatial industrial development and economic transformation, Maoto Molefane, said that in the fourth quarter of the 2020/2021 financial year, 10 of the country's SEZs had attracted more than R56 billion worth of private investment and a total of 222 companies. Southern Africa's largest and most established SEZ, Coega (located north of Gqeberha in the Nelson Mandela Bay Municipality), attracted the largest portion of these investments. Should Aspen's wish for another SEZ in the province materialise, the Eastern Cape will have three such zones – the other one being the East London SEZ in Buffalo City that offers support to the automotive, agro-processing and aquaculture industries. "The Eastern Cape is well positioned to take advantage of the base that's been created here by Aspen," said Patel.

Move | 0.09% Open | 25059c Close | 25132c High | 25512c Low | 24766c

SIBANYE STILLWATER LIMITED – Cautionary announcement

Sibanye-Stillwater advised its shareholders that the Company has entered into negotiations with affiliates of funds advised by Applan Capital Advisory LLP, regarding the acquisition of both the Santa Rita nickel and the Serrote copper mines, located in Brazil. If these negotiations are successfully concluded, they may have a material effect on the price of the company's securities. Accordingly, shareholders of Sibanye-Stillwater are advised to exercise caution when dealing in the Company's securities until a full announcement is made.

Move | -5.08% Open | 5430c Close | 5179c High | 5447c Low | 5154c

EXPECTED COMPANY REPORTING SCHEDULE

COMPANY	CODE	RELEASE	DATE
Astoria	ARA	Quarterly	26 Oct
Spear REIT	SEA	Interim	26 Oct
Famous Brands	FBR	Interim	27 Oct
Adcorp	ADR	Interim	28 Oct
Datatec	DTC	Interim	28 Oct

BANK & OTHER SELECTED PREFERENCE SHARES

COMPANY	CODE	Close	CLEAN YIELD	APPROX. NXT. LDT
Nedbank	NBKP	945	7,59	13 Apr
Investec Bank	INLP	8000	8,23	08 Dec
Investec Limited	INPR	7640	8,23	08 Dec
Standard Bank	SBPP	7900	7,89	08 Sep
Firstrand Bank	FSRP	7848	7,64	16 Feb
Absa	ABSP	72500	7,92	13 Apr
Capitec	CPIP	10200	6,18	16 Mar
Grindrod	GNDP	7431	8,48	23 Mar
Netcare	NTCP	7999	8,31	03 Nov
Discovery	DSBP	8800	8,20	09 Mar
Invicta	IVTP	8225	9,91	24 Nov

LOCAL EQUITIES | JSE MID CAP COMPANIES

COMPANY	CODE	CLOSE	PREVIOUS	1D%	1M%	YTD%
Aspen	APN	25132	24908	0,90	0,53	100,46
African Rainbow	ARI	21650	21709	-0,27	1,99	-17,34
Avi	AVI	7871	8020	-1,86	-11,70	7,50
Barworld	BAW	12647	12433	1,72	22,50	38,83
Bidvest Group	BVT	19044	19032	0,06	-3,70	21,28
Capco	CCO	3350	3325	0,75	-1,56	17,30
Clicks Group	CLS	27694	27233	1,69	-7,38	9,61
Coronation	CML	5065	5073	-0,16	-2,60	17,33
Dis-Chem	DCP	3198	3198	0,00	6,71	52,21
Distell Group	DGH	18035	18022	0,07	-2,43	89,76
Drdgold	DRD	1374	1388	-1,01	8,70	-23,54
Exxaro Resources	EXX	16316	16207	0,67	-8,18	17,47
Fortress Reit A	FFA	1351	1354	-0,22	-2,38	-1,03
Fortress Reit B	FFB	235	240	-2,08	-9,27	-21,93
Growthpoint	GRT	1323	1322	0,08	-9,26	5,25
Harmony Gold	HAR	5837	5957	-2,01	25,72	-18,48
Investec	INL	6665	6691	-0,39	10,13	81,91
Investec	INP	6578	6590	-0,18	8,55	74,71
Italtile	ITE	1651	1671	-1,20	4,83	11,55
Libhold	LBH	9079	9032	0,52	-1,64	46,48
Life Healthcare	LHC	2380	2365	0,63	-1,45	41,50
Multichoice Group	MCG	12357	12480	-0,99	3,81	-7,78
Mediclinic Int.	MEI	6825	6724	1,50	5,58	19,86
Montauk Renewables	MKR	16500	16855	-2,11	-6,74	-69,75
Mr Price Group	MRP	20586	20498	0,43	0,95	20,63
Momentum	MTM	2014	2020	-0,30	0,30	27,79
Ninety One Plc	N91	5510	5419	1,68	3,73	20,81
Nedbank	NED	17403	17397	0,03	0,81	34,41
Northam Platinum	NHM	23450	23215	1,01	32,57	11,92
Nepi Rockcastle Plc	NRP	10253	10250	0,03	-2,43	9,66
Netcare	NTC	1646	1610	2,24	-2,08	31,68
Ninety One	NY1	5304	5230	1,41	3,72	20,55
Old Mutual	OMU	1550	1548	0,13	-1,27	30,36
Pik N Pay	PIK	5818	5844	-0,44	-0,26	15,76
Pepkor	PPH	2333	2328	0,21	11,41	71,17
Psg	PSG	7855	7914	-0,75	4,94	31,18
Quilter Plc	QLT	3041	3048	-0,23	4,32	-1,07
Rbplapts	RBP	9389	9219	1,84	22,64	43,61
Redefine	RDF	455	457	-0,44	-1,52	36,64
Remgro	REM	13304	13299	0,04	-2,05	38,30
Resilient Reit	RES	5669	5725	-0,98	2,27	34,02
Rand Merchant Inv	RMI	3890	3841	1,28	5,48	21,37
Reinet Investments Sca	RNI	28583	28418	0,58	0,29	3,71
Sappi	SAP	4365	4225	3,31	13,05	33,00
Santam	SNT	25008	25271	-1,04	1,38	-1,84
Spar	SPP	19532	19611	-0,40	-4,25	3,05
Sirius Real Estate	SRE	2741	2696	1,67	1,18	42,02
Tigebrands	TBS	18873	18798	0,40	2,57	-9,34
The Foschini Group	TFG	12715	12818	-0,80	-8,92	24,28
Thungela Resources	TGA	7406	7350	0,76	5,94	1366,53
Telkom	TKG	4793	4765	0,59	8,76	56,07
Truworths	TRU	5426	5447	-0,39	-1,76	47,25
Textainer	TXT	57158	54480	4,92	14,93	100,56
Woolies	WHL	5478	5500	-0,40	-7,54	38,54

LOCAL EQUITIES | JSE SMALL CAP COMPANIES

COMPANY	CODE	CLOSE	PREVIOUS	1D%	1M%	YTD%
Advtech	ADH	1839	1785	3,03	1,21	93,58
Altron	AEL	1070	1102	-2,90	2,98	-1,92
Aeci	AFE	11200	11144	0,50	7,26	28,74
Alexander Forbes	AFH	433	430	0,70	0,70	9,34
Afrimat	AFT	5180	5105	1,47	5,61	20,41
Arrowhead Prop.	AHB	405	412	-1,70	-4,71	74,57
African Rainbow Cap.	AIL	500	540	-7,41	27,88	12,11
Adcock Ingram	AIP	4800	4869	-1,42	1,03	4,35
Astral	ARL	17724	17897	-0,97	-2,95	27,05
Attacq	ATT	660	669	-1,35	-5,17	32,80
Brait	BAT	408	420	-2,86	1,75	9,38
Blue Label Telecoms	BLU	556	540	2,96	-1,59	44,04
Bytes Technology	BYI	10000	10417	-4,00	-8,26	49,93
City Lodge Hotels	CLH	560	578	-3,11	40,00	124,00
Curro	COH	1200	1225	-2,04	3,81	26,58
Cashbuild	CSB	26514	26409	0,40	3,61	11,87
Datatec	DTC	3931	3930	0,03	9,19	60,12
Emira	EMI	952	969	-1,75	8,18	42,94
Epp N.V	EPP	1156	1195	-3,26	-12,22	11,69
Equites Property Fund	EQU	2085	2030	2,71	0,82	20,03
Famous Brands	FBR	6920	6780	2,06	18,27	41,37
Grindrod	GND	508	535	-5,05	4,10	0,59
Hci	HCI	8240	8291	-0,62	19,63	49,82
Hudaco	HDC	13292	13934	-4,61	6,76	64,10
Hammerson Plc	HMN	655	658	-0,46	-2,09	25,96
Hyprop	HYP	2928	2939	-0,37	-10,95	-0,81
Investec Australia Prop.	IAP	1698	1705	-0,41	2,85	23,49
Investec Prop Fund	IPF	1040	1046	-0,57	-3,08	14,16
Imperial	IPL	6234	6270	-0,57	0,74	66,91
Jse	JSE	10586	10544	0,40	-0,77	-5,90
Kap Industrial	KAP	489	495	-1,21	5,84	54,75
Karoo	KRO	50501	52784	-4,33	15,83	---
Psg Konsult	KST	1320	1360	-2,94	25,71	46,67
Liberty Two Degrees	L2D	435	440	-1,14	-1,81	2,35
Long4Life	L4L	534	520	2,69	21,36	62,31
Libstar	LBR	655	661	-0,91	2,34	3,48
Lighthouse Capital	LTE	825	830	-0,60	-1,67	20,79
Massmart	MSM	6116	6167	-0,83	-5,91	45,55
Mas Real Estate Inc	MSP	1746	1768	-1,24	-3,80	36,94
Metair	MTA	3044	3045	-0,03	4,32	62,35
Motus	MTH	10134	10000	1,34	-2,14	80,96
M&R Hold	MUR	1311	1315	-0,30	18,43	64,49
Oceana	OCE	6219	6323	-1,64	-5,21	-3,21
Omnia	OMN	6300	6298	0,03	9,83	36,69
Pan African Resource	PAN	356	354	0,56	12,66	-25,83
Raubex	RBX	3425	3489	-1,83	-6,78	59,30
Rhodes Food Pty	RFG	1150	1234	-6,81	-7,26	-4,80
Reunert	RLO	4911	4876	0,72	-1,48	35,66
Sa Corp Real Estate	SAC	207	206	0,49	-8,41	19,65
Steinhoff International N.V.	SNH	241	237	1,69	-23,97	131,73
Super	SPG	3407	3419	-0,35	-4,99	45,54
Stor-Age Property Reit	SSS	1408	1395	0,93	3,53	3,91
Stenprop	STP	3756	3700	1,51	4,19	36,73
Sun Int	SUI	2940	2925	0,51	54,74	137,48
Transaction Capital	TCP	4443	4372	1,62	12,60	78,51
Tsogo Sun Hotels	TGO	356	363	-1,93	16,72	143,84
Tsogo Sun Gaming	TSG	1140	1125	1,33	20,00	123,53
Vukile	VKE	1221	1233	-0,97	-3,86	52,63
Wbhovco	WBO	10903	10970	-0,61	-10,02	19,63
Zeder Investments	ZED	313	312	0,32	0,97	19,92

SOUTH AFRICAN 10-YEAR BOND

2021 v 2020



10-YEAR BOND YIELDS | SELECTED ITEMS (BASIS POINT CHANGE)

REGION	YIELD	1D%	1M%	YTD%
United States	1,64	1	18	83
United Kingdom	1,14	---	22	86
Germany	-0,12	---	11	46
Japan	0,1	---	4	7
South African 10Y	9,59	-3	30	28

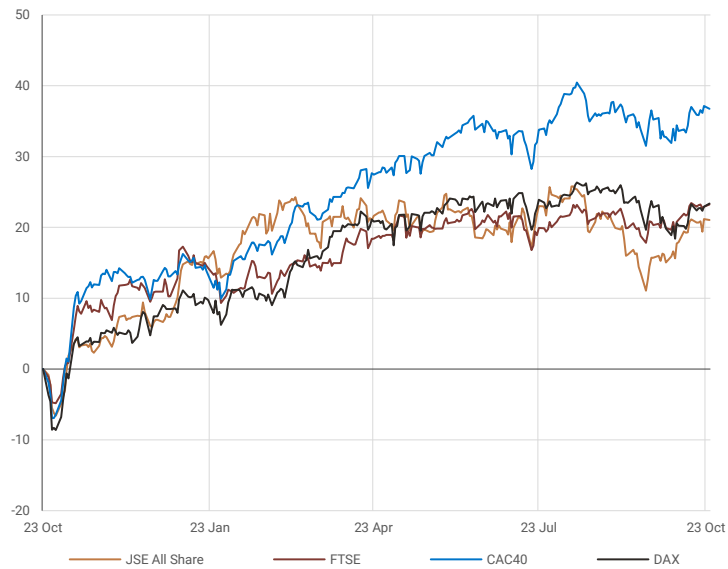
GLOBAL INTEREST RATES | SELECTED ITEMS

REGION	CURRENT RATE
United States	0,00%-0,25%
United Kingdom	0,10%
European	0,00%
SA Repo Rate	3,50%
SA Prime Rate	7,00%

## GLOBAL MARKETS

### EUROPEAN INDICES

normalised percentage performances



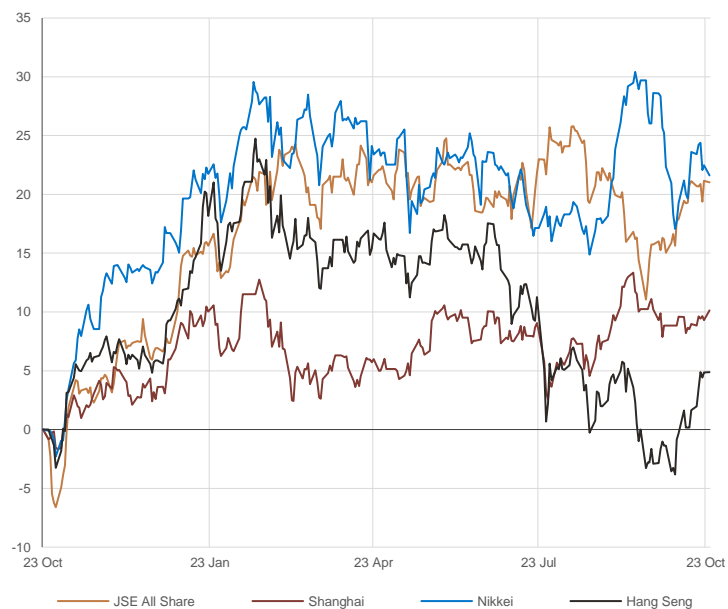
### AMERICAN INDICES

normalised percentage performances



### ASIAN INDICES

normalised percentage performances



## EUROPEAN MARKET COMMENTARY

### SELECTED HEADLINES

European stocks eked out small gains Monday, as investors continued to monitor corporate earnings, Covid-19 and the inflation picture. The pan-European Stoxx 600 closed up by 0.2% provisionally, with most major bourses in positive territory. Among sectors, auto companies led the gains, climbing 2.5%. On the data front, Germany's Ifo Institute business climate survey showed supply chain problems weighing on Europe's largest economy in October. The Ifo Business Climate Index, published Monday, fell to 97.7 this month from 98.9 in September, with companies increasingly pessimistic across services, manufacturing and trade.

EUROPEAN INDICES	CLOSE	PREVIOUS	1D%	5D%	1M%	YTD%
CAC 40	6712,9	6733,7	-0,31	0,60	1,12	20,92
DAX 30	15599,2	15543,0	0,36	0,81	0,43	13,71
Eurostoxx 50	4188,3	4188,8	-0,01	0,89	0,72	17,89
FTSE	7222,8	7204,6	0,25	0,26	2,43	11,80

### CAC 40



### DAX



### FTSE



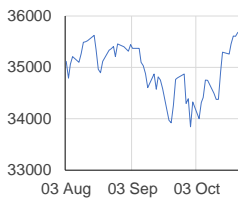
## AMERICAN MARKET COMMENTARY

### SELECTED HEADLINES

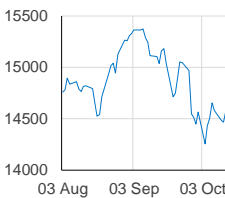
U.S. stocks rose to record highs on Monday as investors prepared for a major week of earnings from heavyweight tech companies. Tesla, which reported record revenue and profits last week, gained more than 12% and saw its market cap surpass \$1 trillion after Morgan Stanley hiked its price target on the shares to \$1,200 from \$900. Rental car company Hertz also announced that it would order 100,000 Tesla vehicles. Energy stocks were an area of strength for the market on Monday as West Texas Intermediate crude futures touched \$85 per barrel.

AMERICAN INDICES	CLOSE	PREVIOUS	1D%	5D%	1M%	YTD%
Dow Jones	35741,2	35677,0	0,18	1,37	2,71	16,78
Nasdaq	15226,7	15090,2	0,90	1,36	1,19	18,14
S&P 500	4566,5	4544,9	0,47	1,78	2,49	21,58

### DOW JONES



### NASDAQ



### S&P 500



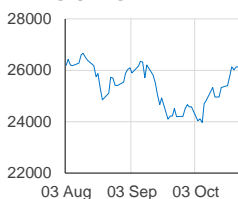
## ASIAN MARKET COMMENTARY

### SELECTED HEADLINES

Stocks in Asia-Pacific rose this morning after major indexes on Wall Street rose to record closing highs stateside. Shares of electric vehicle battery makers in Asia-Pacific soared after car rental firm Hertz announced it will be ordering 100,000 vehicles from Tesla by the end of 2022. In Japan, Panasonic shares jumped 4.74%. South Korea's LG Chem, owner of electric battery maker LG Energy Solution, gained 1.83%.

ASIAN INDICES	CLOSE	PREVIOUS	1D%	5D%	1M%	YTD%
Hang Seng	26132,0	26126,9	0,02	2,84	8,02	-4,04
Nikkei 225	28600,4	28804,9	-0,71	-1,46	-5,45	4,21
Shanghai	3609,9	3582,6	0,76	1,17	-0,09	3,94

### HANG SENG



### NIKKEI



### SHANGHAI



## COMMODITIES

### BRENT CRUDE (\$)



### PLATINUM (\$)



## COMMODITY MARKET COMMENTARY

### SELECTED HEADLINES

Gold prices edged lower this morning, weighed down by an uptick in the dollar as investors eye upcoming key central bank meetings this week. Oil prices edged lower earlier today, taking a breather from a sustained rally driven by strong demand in the United States, the world's biggest consumer of oil and its products. While China's red-hot power and coal markets have cooled somewhat after government intervention, energy prices remain elevated worldwide as temperatures fall with the onset of the northern winter.

COMMODITY	LAST	CLOSE	% CHG	1D%	1M%	YTD%
Brent Crude (\$)	86,2	86,0	0,26	0,32	10,15	77,21
Gold (\$)	1803,2	1807,8	-0,26	0,86	3,27	-4,76
Palladium	2049,0	2063,8	-0,71	2,02	4,52	-15,90
Platinum (\$)	1053,5	1063,4	-0,93	1,91	7,74	-0,80
Silver	24,4	24,6	-0,70	1,06	9,59	-6,89

### GOLD (\$)



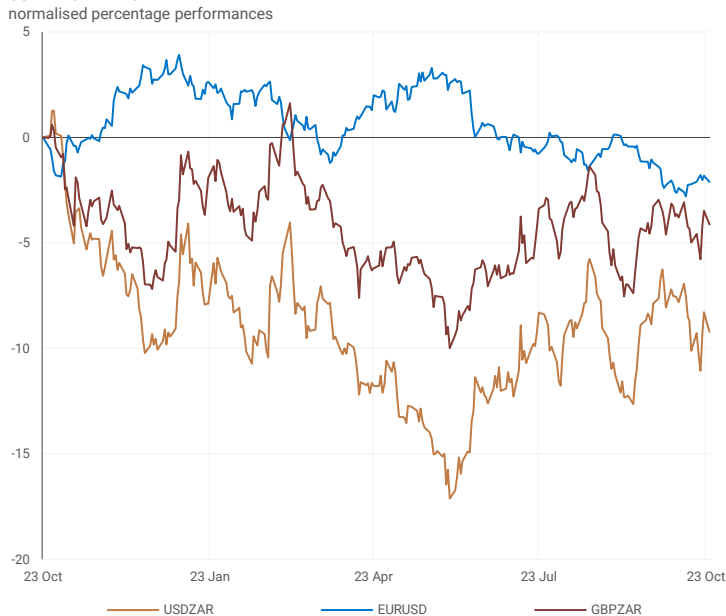
## CURRENCIES

COMMODITY	LAST	CLOSE	% CHG	1D%	1M%	YTD%
USDZAR	14,7	14,7	0,02	-1,01	-1,47	0,03
GBPZAR	20,2	20,3	-0,14	-0,66	-0,88	0,85
EURZAR	17,1	17,1	-0,18	-1,01	-2,47	-4,81
AUDZAR	11,0	11,0	0,21	-0,37	1,60	-2,46
EURUSD	1,2	1,2	-0,08	-0,31	-0,94	-4,96
USDJPY	113,9	113,7	0,20	0,19	2,68	10,10
GBPUSD	1,4	1,4	-0,08	0,12	0,69	0,75
USDCHF	0,9	0,9	0,09	0,40	-0,48	3,91
AUDCAD	0,9	0,9	0,24	0,45	1,00	-5,25

### SELECTED HEADLINES

The rand firmed on Monday, supported by higher precious metals prices. At the close of the session, the rand was trading around R14.70 to the dollar or 1.01% firmer. The dollar has bounced off recent lows and was firm in choppy trade this morning ahead of a handful of data releases and central bank meetings which investors expect to guide the rates outlook.

### CURRENCY PAIRS



### USDZAR



### EURUSD

