

GLOBAL OVERVIEW | SELECTED INDICES

SOUTH AFRICAN INDICES	CLOSE	PREVIOUS	1D%	5D%	1M%	YTD%
All Share	67475,1	67615,3	-0,21	0,87	5,11	13,58
Top 40	60874,4	61024,6	-0,25	0,87	5,35	11,94
Financial 15	14054,1	14027,2	0,19	0,33	-1,35	16,53
Industrial 25	87252,7	87147,1	0,12	2,07	5,26	12,01
Resource 10	63081,9	63619,8	-0,85	-0,19	9,24	9,56
Mid Cap	78397,4	78226,1	0,22	0,89	1,48	22,02
Small Cap	63594,4	64218,9	-0,97	-1,23	2,16	43,05
Banks	8176,2	8156,6	0,24	-0,26	-2,51	19,38
General Retailers	7868,1	7934,7	-0,84	2,70	6,97	69,18
Property (J253) - TR	1535,9	1536,0	-0,01	-0,47	-2,40	24,91

AMERICAN INDICES	CLOSE	PREVIOUS	1D%	5D%	1M%	YTD%
Dow Jones	35490,7	35756,9	-0,74	-0,33	1,78	15,96
Nasdaq	15235,8	15235,7	0,00	0,75	1,78	18,21
S&P 500	4551,7	4574,8	-0,51	0,34	2,44	21,18
Dollar Index	93,9	94,0	-0,09	0,28	0,50	4,40
US VIX	17,0	16,0	6,26	9,62	-9,49	-25,36

EUROPEAN INDICES	CLOSE	PREVIOUS	1D%	5D%	1M%	YTD%
CAC 40	6753,5	6766,5	-0,19	0,71	1,54	21,65
DAX 30	15705,8	15757,1	-0,33	1,18	0,85	14,48
Eurostoxx 50	4220,9	4224,0	-0,07	1,17	1,33	18,81
FTSE	7253,3	7277,6	-0,33	0,42	2,69	12,27

ASIAN INDICES	CLOSE	PREVIOUS	1D%	5D%	1M%	YTD%
Hang Seng	25628,7	26038,3	-1,57	-1,94	5,87	-5,88
Nikkei 225	29098,2	29106,0	-0,03	-0,54	-3,78	6,03
Shanghai	3562,3	3597,6	-0,98	-0,69	-0,57	2,57

EARLY MORNING	LAST	CLOSE	% CHG	1D%	5D%	YTD%
Tencent	489,4	487,0	0,49	-2,99	-4,42	-13,96
BHP Billiton	3710,0	3766,0	-1,49	-1,44	-2,36	-11,24

INTERNATIONAL ECONOMIC CALENDAR | SELECTED EVENTS

TIME	AREA	TODAY'S EVENTS & RELEASES	PERIOD	EXP.	PREV.
11:30	RSA	PPI YoY	Sep	7.3%	7.2%
11:30	RSA	PPI MoM	Sep	0.45%	0.8%
13:45	EUR	Monetary Policy Statement	---	---	---
13:45	EUR	Main Refinancing Rate	---	0.00%	0.00%
14:30	EUR	ECB Press Conference	---	---	---

TIME	AREA	PREVIOUS SESSION'S RELEASES	PERIOD	EXP.	ACT.
10:00	EUR	M3 Money Supply y/y	Sep	7.5%	7.4%
10:00	EUR	Private Loans y/y	Sep	4.4%	4.1%
14:30	USD	Core Durable Goods Orders m/m	Sep	0.4%	0.4%
14:30	USD	Durable Goods Orders m/m	Sep	-1.1%	-0.4%
TNTV	GBP	Annual Budget Release	---	---	---

LOCAL EQUITIES | JSE ALL SHARE COMPANIES

BEST ONE-DAY % PERFORMERS	CODE	CLOSE	1D%	5D%	YTD%
Royal Bafokeng Platinum	RBP	11430	20,57	19,76	74,82
DRD Gold	DRD	1433	6,54	5,76	-20,26
Tiger Brands	TBS	19641	5,03	4,38	-5,65
Sirius Real Estate	SRE	2780	2,70	3,77	44,04
Quilter Plc	QLT	3235	2,37	9,36	5,24
Italtile	ITE	1725	2,19	2,80	16,55
Pan African Resource plc	PAN	359	1,99	4,36	-25,21

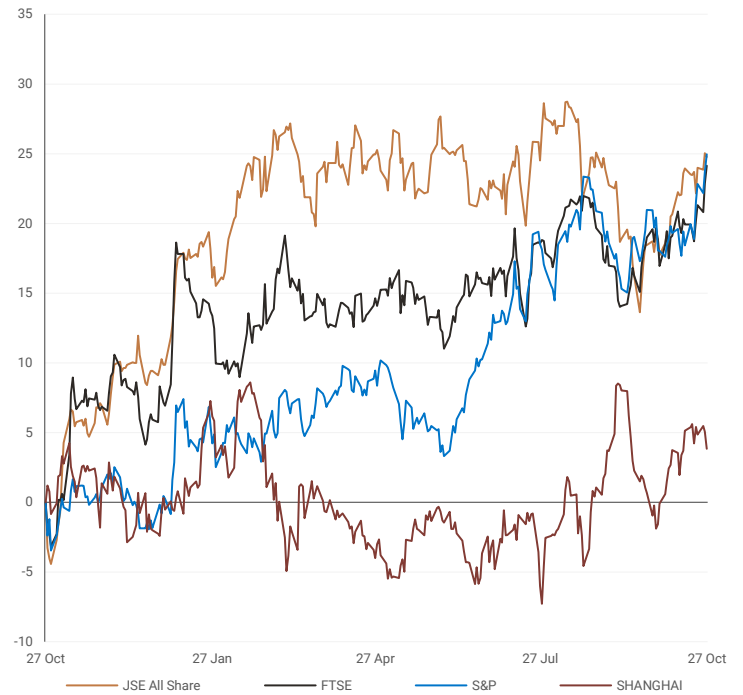
WORST ONE-DAY % PERFORMERS	CODE	CLOSE	1D%	5D%	YTD%
Tsogo Sun Hotels	TGO	321	-7,49	-12,30	119,86
Steinhoff Int N.V.	SNH	222	-6,33	-4,31	113,46
Hosken Cons	HCI	7564	-5,72	-11,25	37,53
Metair estments	MTA	2912	-4,05	-4,52	55,31
PSG Konsult	KST	1325	-3,64	3,52	47,22
Transaction Capital	TCP	4340	-3,56	0,42	74,37
African Rainbow Min	ARI	20880	-3,52	-1,84	-20,28

DIVIDEND DATA | SELECTED JSE ALL SHARE COMPANIES

COMPANY	CODE	DIVIDEND
Netcare Pref	NTCP	289.54 ZARc

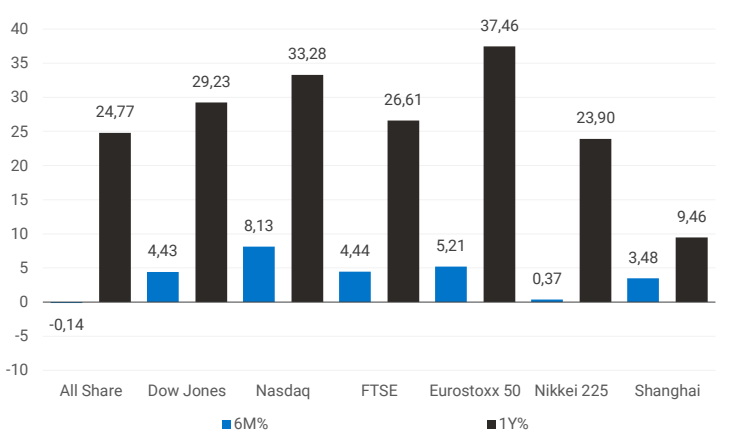
INTERNATIONAL INDICES

normalised percentage performances (in rand terms)



INTERNATIONAL INDICES

6-month & 1-year percentage performances



JSE ALL SHARE INDEX

2020 v 2021



Last date to trade 02 Nov

COMPANY	CODE	DIVIDEND	COMPANY	CODE	DIVIDEND
Netcare Pref	NTCP	289.54 ZARc			

COMPANY	CLOSE	PREVIOUS	1D%	5D%	1M%	YTD%
Absa Group	14258	14461	-1,40	-0,72	0,92	18,96
Anglo	56700	57621	-1,60	-0,07	7,08	16,91
Angloplat	156059	160010	-2,47	-2,25	17,27	8,14
Anglo Gold Ashanti	29020	28640	1,33	4,79	26,74	-15,28
Anheuser-Busch Inbev	85743	84909	0,98	4,49	-3,33	-17,48
Bhp Group Plc	40305	40430	-0,31	0,81	4,39	3,60
Bid Corp	33007	33110	-0,31	-0,20	6,13	25,49
British American Tobacco Plc	53773	52885	1,68	3,60	-1,85	-1,42
Compagnie Financiere	18590	18386	1,11	7,83	15,73	41,80
Capitec	172675	173105	-0,25	0,99	-8,64	20,53
Discovery	13926	14016	-0,64	2,44	7,06	-9,30
Firstrand	5853	5800	0,91	0,05	-4,39	14,67
Goldfields	14671	14500	1,18	5,05	19,70	6,64
Glencore Plc	7363	7557	-2,57	-2,31	6,31	57,23
Implats	20818	21105	-1,36	-4,38	21,91	3,11
Kumba Iron Ore	48199	48971	-1,58	-3,92	-6,41	-22,61
Mondi Plc	37352	37067	0,77	4,42	-1,11	8,86
Mtn Group	13687	13624	0,46	-1,26	-1,46	127,40
Naspers -N	261892	265236	-1,26	-2,10	5,35	-21,39
Prosus Nv	131789	132918	-0,85	-0,38	7,74	-25,65
Stanbank	13780	13749	0,23	-0,98	-0,14	8,44
Shoprite	18325	18500	-0,95	-1,70	0,53	30,89
Sanlam	6264	6252	0,19	1,03	-0,18	6,62
Sasol	26120	26265	-0,55	-2,57	-0,62	95,03
Sibanye Stillwater	5287	5312	-0,47	-3,99	12,49	-11,88
Vodacom Group	13630	13750	-0,87	-0,94	-9,70	9,57

SELECTED HEADLINES

Lower precious metal prices dragged the Johannesburg Stock Exchange (JSE) lower yesterday. The JSE's Top-40 Index dipped 0.25% to 60,874 points and the broader All-Share Index lost 0.21% to 67,475 points. Gold and platinum stocks were the biggest losers of the day, while some firms that benefit from a weaker rand rose. Blue Label Telecoms, which majority owns South Africa's fourth-largest mobile operator Cell C, closed up 0.46% after Cell C swung back to a first-half profit from a \$513 million loss last year.

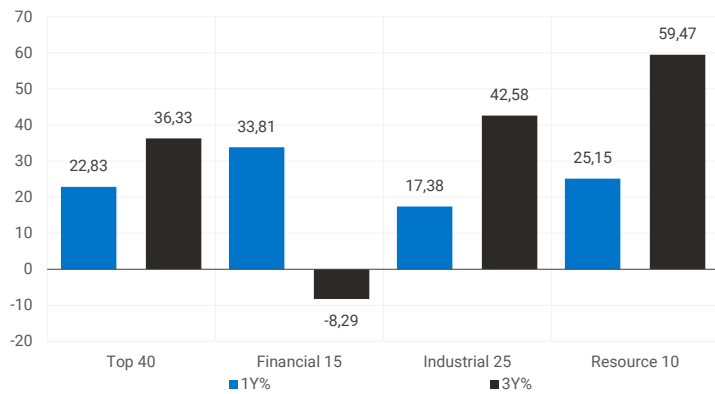
JSE TOP 40 INDEX

last 100 days



LOCAL INDICES

1-year & 3-year percentage performances



SENS ANNOUNCEMENTS

SELECTED RELEASES

Royal Bafokeng Platinum rockets almost 20% on proposed Implats buyout offer

The share price of Royal Bafokeng Platinum (RBPlat) rocketed almost 20% in early morning trade on Wednesday after it announced jointly with Impala Platinum (Implats) that talks are underway for Implats to buy it out. RBPlat was trading at around R113 a share, while Implats was almost 3% weaker at R205.50 following the news. If successful, the proposed deal will see RBPlat becoming yet another company to delist from the JSE. "Shareholders of both RBPlat and Implats are advised that the parties are in discussions relating to a non-binding indicative proposal from Implats to acquire 100% of the issued ordinary shares of RBPlat, other than treasury shares held by the RBPlat Group by way of a scheme of arrangement in terms of Section 114 of the Companies Act, 71 of 2008," the group's noted in a Sens statement. However, RBPlat is burgeoning as a mining company, having recently joined the elite group of SA's top 10 mining groups according to the PwC SA Mine 2021 report. "Should Implats acquire all the issued ordinary shares in RBPlat, application will be made to the JSE for the issued ordinary shares of RBPlat to be delisted. The parties have completed a reciprocal due diligence exercise and are progressing a Proposed Transaction implementation agreement," the groups said in a relatively short announcement. "Accordingly, shareholders are advised to exercise caution when dealing in their RBPlat and/or Implats shares until a further announcement is made," the Sens statement added.

Move | 20.57% Open | 11550c Close | 11430c High | 11720c Low | 10900c

A 140% hike in profit leads Famous Brands's half-year recovery

A steady recovery is on the horizon for South African franchiser Famous Brands as the company reports a 140% surge in profit for the half year ended August 31, bolstered by an increase in take-away and delivery sales. The JSE-listed company, in a Sens statement on Wednesday, reported headline earning per share (Heps) of 97 cents for the current period compared to a 240 cents loss reported in the previous comparable period. Famous Brands – known for its Steers, Debonairs Pizza, Wimpy and Mugg & Bean brands – also reported a 50% hike in revenue to R3.0 billion and a 302% rise in operating profit to R222 million, leading the group's 7.4% improvement in its operating profit margin to 12.9. The group also saw a 46% increase in revenue in its retail business to R105 million from R72 million in the previous period. This, the group said, is in line with the increasing popularity of consumer home consumption. Despite the group reporting a 75.6% increase in combined like-for-like sales for its leading and signature brands for the period, the group's signature brands – which include Mythos, PAUL and Fego Caffè – are also yet to recover to pre-Covid-19 performance levels.

Move | 1.43% Open | 7039c Close | 6900c High | 7041c Low | 6722c

EXPECTED COMPANY REPORTING SCHEDULE

COMPANY	CODE	RELEASE	DATE
Adcorp	ADR	Interim	28 Oct
Datec	DTC	Interim	28 Oct
MiX Telematics	MIX	Interim	28 Oct
EOH	EOH	Final	28 Oct
Bytes Technology	BYI	Interim	28 Oct

BANK & OTHER SELECTED PREFERENCE SHARES

COMPANY	CODE	Close	CLEAN YIELD	APPROX. NXT. LDT
Nedbank	NBKP	940	7,59	13 Apr
Investec Bank	INLP	8500	8,23	08 Dec
Investec Limited	INPR	8000	8,24	08 Dec
Standard Bank	SBPP	8199	7,90	08 Sep
Firstrand Bank	FSRP	8100	7,65	16 Feb
Absa	ABSP	73999	7,93	13 Apr
Capitec	CPIP	10300	6,18	16 Mar
Grindrod	GNDP	7550	8,48	23 Mar
Netcare	NTCP	7700	8,31	03 Nov
Discovery	DSBP	8700	8,21	09 Mar
Invicta	IVTP	8225	9,91	24 Nov

LOCAL EQUITIES | JSE MID CAP COMPANIES

COMPANY	CODE	CLOSE	PREVIOUS	1D%	1M%	YTD%
Aspen	APN	24834	25073	-0,95	-4,39	98,09
African Rainbow	ARI	20880	21641	-3,52	-2,06	-20,28
Avi	AVI	8069	7970	1,24	-7,78	10,20
Barworld	BAW	12650	12731	-0,64	20,53	38,86
Bidvest Group	BVT	18950	18893	0,30	-1,81	20,69
Capco	CCO	3416	3355	1,82	-2,68	19,61
Clicks Group	CLS	28279	28149	0,46	-1,86	11,92
Coronation	CML	5072	5102	-0,59	-4,46	17,49
Dis-Chem	DCP	3151	3234	-2,57	8,77	49,98
Distell Group	DGH	18000	18278	-1,52	-2,54	89,39
Drdgold	DRD	1433	1345	6,54	12,92	-20,26
Exxaro Resources	EXX	16464	16539	-0,45	-7,58	18,53
Fortress Reit A	FFA	1340	1341	-0,07	-2,19	-1,83
Fortress Reit B	FFB	228	231	-1,30	-12,31	-24,25
Growthpoint	GRT	1331	1346	-1,11	-9,82	5,89
Harmony Gold	HAR	5832	5796	0,62	21,07	-18,55
Investec	INL	6785	6783	0,03	5,28	85,18
Investec	INP	6704	6657	0,71	4,91	78,06
Italtile	ITE	1725	1688	2,19	9,66	16,55
Libhold	LBH	9140	9091	0,54	0,40	47,47
Life Healthcare	LHC	2384	2404	-0,83	0,21	41,74
Multichoice Group	MCG	12387	12399	-0,10	5,52	-7,56
Mediclinic Int.	MEI	6906	6839	0,98	6,08	21,29
Montauk Renewables	MKR	17242	17900	-3,68	-1,27	-68,39
Mr Price Group	MRP	20219	20300	-0,40	0,76	18,48
Momentum	MTM	2013	1997	0,80	-0,84	27,73
Ninety One Plc	N91	5540	5554	-0,25	3,90	21,46
Nedbank	NED	17368	17241	0,74	2,62	34,14
Northam Platinum	NHM	22554	23256	-3,02	33,16	7,64
Nepi Rockcastle Plc	NRP	10294	10209	0,83	-1,97	10,10
Netcare	NTC	1666	1664	0,12	1,34	33,28
Ninety One	NY1	5344	5368	-0,45	4,60	21,45
Old Mutual	OMU	1563	1564	-0,06	-1,88	31,46
Pik N Pay	PIK	5934	5884	0,85	5,38	18,07
Pepkor	PPH	2395	2370	1,05	14,05	75,72
Psg	PSG	7880	7860	0,25	3,21	31,60
Quilter Plc	QLT	3235	3160	2,37	9,66	5,24
Rbplapts	RBP	11430	9480	20,57	49,84	74,82
Redefine	RDF	457	456	0,22	-2,56	37,24
Remgro	REM	13500	13476	0,18	2,09	40,33
Resilient Reit	RES	5650	5669	-0,34	0,80	33,57
Rand Merchant Inv	RMI	4008	4000	0,20	10,35	25,05
Reinet Investments Sca	RNI	28800	28769	0,11	0,13	4,50
Sappi	SAP	4578	4612	-0,74	17,57	39,49
Santam	SNT	25537	25427	0,43	5,77	0,23
Spar	SPP	19805	19736	0,35	0,51	4,49
Sirius Real Estate	SRE	2780	2707	2,70	2,47	44,04
Tigebands	TBS	19641	18700	5,03	8,50	-5,65
The Foschini Group	TFG	12774	12898	-0,96	-5,94	24,86
Thungela Resources	TGA	7409	7875	-5,92	1,49	1367,13
Telkom	TKG	4877	4815	1,29	7,54	58,81
Truworths	TRU	5338	5488	-2,73	-0,30	44,86
Textainer	TXT	57627	57972	-0,60	9,10	102,21
Woolies	WHL	5445	5500	-1,00	-7,33	37,71

LOCAL EQUITIES | JSE SMALL CAP COMPANIES

COMPANY	CODE	CLOSE	PREVIOUS	1D%	1M%	YTD%
Advtech	ADH	1883	1899	-0,84	8,53	98,21
Altron	AEL	1090	1080	0,93	5,83	-0,09
Aeci	AFE	11173	11180	-0,06	5,68	28,43
Alexander Forbes	AFH	412	425	-3,06	-4,85	4,04
Afrimat	AFT	5050	5189	-2,68	3,06	17,39
Arrowhead Prop.	AHB	386	380	1,58	-4,46	66,38
African Rainbow Cap.	AIL	500	500	0,00	25,00	12,11
Adcock Ingram	AIP	4800	4885	-1,74	2,30	4,35
Astral	ARL	17791	17736	0,31	0,28	27,53
Attacq	ATT	648	649	-0,15	-8,60	30,38
Brait	BAT	406	406	0,00	1,00	8,85
Blue Label Telecoms	BLU	543	545	-0,37	-4,23	40,67
Bytes Technology	BYI	9826	9727	1,02	-7,19	47,32
City Lodge Hotels	CLH	546	550	-0,73	36,50	118,40
Curro	COH	1200	1210	-0,83	1,69	26,58
Cashbuild	CSB	26819	27024	-0,76	4,06	13,16
Datatec	DTC	3925	4053	-3,16	8,70	59,88
Emira	EMI	946	970	-2,47	7,50	42,04
Epp N.V	EPP	1175	1186	-0,93	-10,31	13,53
Equites Property Fund	EQU	2083	2090	-0,33	0,48	19,92
Famous Brands	FBR	6900	6803	1,43	19,11	40,96
Grindrod	GND	503	500	0,60	2,65	-0,40
Hci	HCI	7564	8023	-5,72	10,75	37,53
Hudaco	HDC	13323	13228	0,72	8,32	64,48
Hammerson Plc	HMN	638	661	-3,48	-9,63	22,69
Hyprop	HYP	2944	2922	0,75	-10,79	-0,27
Investec Australia Prop.	IAP	1760	1735	1,44	7,12	28,00
Investec Prop Fund	IPF	1042	1050	-0,76	-4,32	14,38
Imperial	IPL	6279	6251	0,45	1,05	68,11
Jse	JSE	10650	10640	0,09	-0,24	-5,33
Kap Industrial	KAP	486	485	0,21	0,21	53,80
Karoo	KRO	50001	51700	-3,29	9,65	---
Psg Konsult	KST	1325	1375	-3,64	23,95	47,22
Liberty Two Degrees	L2D	440	440	0,00	0,00	3,53
Long4Life	L4L	545	537	1,49	25,00	65,65
Libstar	LBR	663	660	0,45	3,59	4,74
Lighthouse Capital	LTE	805	830	-3,01	-4,05	17,86
Massmart	MSM	6169	6327	-2,50	-3,09	46,81
Mas Real Estate Inc	MSP	1749	1742	0,40	-4,95	37,18
Metair	MTA	2912	3035	-4,05	0,41	55,31
Motus	MTH	10200	10301	-0,98	-3,07	82,14
M&R Hold	MUR	1314	1347	-2,45	17,22	64,87
Oceana	OCE	6157	6173	-0,26	-8,10	-4,17
Omnia	OMN	6245	6397	-2,38	7,27	35,50
Pan African Resource	PAN	359	352	1,99	13,25	-25,21
Raubex	RBX	3300	3331	-0,93	-5,74	53,49
Rhodes Food Pty	RFG	1185	1195	-0,84	-4,44	-1,90
Reunert	RLO	5065	5002	1,26	3,83	39,92
Sa Corp Real Estate	SAC	208	205	1,46	-7,96	20,23
Steinhoff International N.V.	SNH	222	237	-6,33	-32,32	113,46
Super	SPG	3276	3371	-2,82	-11,32	39,94
Stor-Age Property Reit	SSS	1412	1416	-0,28	3,07	4,21
Stenprop	STP	3800	3765	0,93	2,01	38,33
Sun Int	SUI	2973	2981	-0,27	51,68	140,15
Transaction Capital	TCP	4340	4500	-3,56	7,32	74,37
Tsogo Sun Hotels	TGO	321	347	-7,49	2,23	119,86
Tsogo Sun Gaming	TSG	1134	1150	-1,39	19,12	122,35
Vukile	VKE	1236	1227	0,73	-4,11	54,50
Wbhovco	WBO	10830	10952	-1,11	-6,72	18,83
Zeder Investments	ZED	313	323	-3,10	-0,32	19,92

SOUTH AFRICAN 10-YEAR BOND

2021 v 2020



10-YEAR BOND YIELDS | SELECTED ITEMS (BASIS POINT CHANGE)

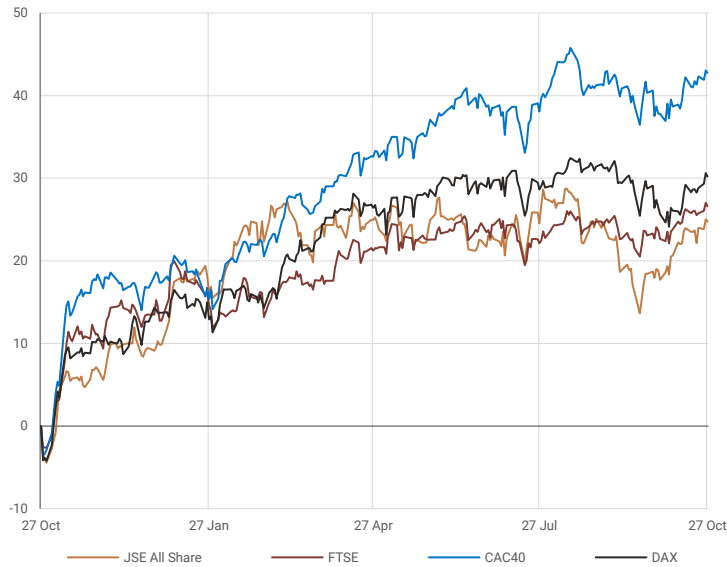
REGION	YIELD	1D%	1M%	YTD%
United States	1,55	1	1	78
United Kingdom	0,98	---	-1	77
Germany	-0,18	---	2	45
Japan	0,09	-1	1	7
South African 10Y	9,5	-2	19	20

GLOBAL INTEREST RATES | SELECTED ITEMS

REGION	CURRENT RATE
United States	0,00%-0,25%
United Kingdom	0,10%
European	0,00%
SA Repo Rate	3,50%
SA Prime Rate	7,00%

EUROPEAN INDICES

normalised percentage performances



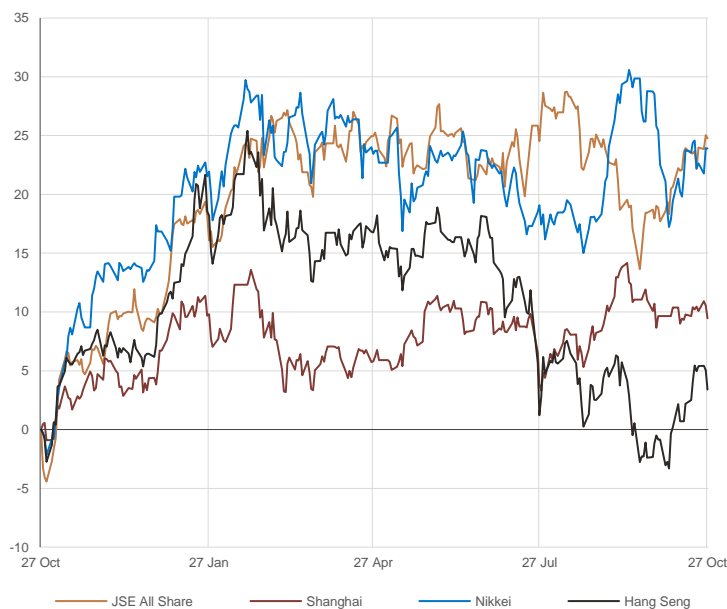
AMERICAN INDICES

normalised percentage performances



ASIAN INDICES

normalised percentage performances



EUROPEAN MARKET COMMENTARY

SELECTED HEADLINES

European stocks closed lower Wednesday as investors digested corporate earnings, fresh economic data and a budget update from the U.K. finance minister. The half-yearly update on the country's public finances included multi-billion pound spending on health care and transport, as well as a rise in the national living wage. The pan-European Euro Stoxx 600 Index provisionally closed down by 0.4%, with mining stocks leading the losses with a fall of 2%. Deutsche Bank reported a fall in revenues at its investment banking unit Wednesday, but still managed to beat expectations and post its fifth consecutive quarter of profit.

EUROPEAN INDICES	CLOSE	PREVIOUS	1D%	5D%	1M%	YTD%
CAC 40	6753,5	6766,5	-0,19	0,71	1,54	21,65
DAX 30	15705,8	15757,1	-0,33	1,18	0,85	14,48
Eurostoxx 50	4220,9	4224,0	-0,07	1,17	1,33	18,81
FTSE	7253,3	7277,6	-0,33	0,42	2,69	12,27



AMERICAN MARKET COMMENTARY

SELECTED HEADLINES

The S&P 500 fell from a record high on Wednesday as the momentum from a strong earnings season started to fade. Microsoft shares jumped 4.2% after the tech company reported earnings that exceeded analysts' estimates and the fastest revenue growth since 2018. Google-parent Alphabet also popped 4.9% following a stronger-than-expected quarterly report. So far roughly 38% of the S&P 500 has reported earnings. Of the names that have posted quarterly updates, 83% have topped earnings expectations, while 79% have exceeded revenue estimates.

AMERICAN INDICES	CLOSE	PREVIOUS	1D%	5D%	1M%	YTD%
Dow Jones	35490,7	35756,9	-0,74	-0,33	1,78	15,96
Nasdaq	15235,8	15235,7	0,00	0,75	1,78	18,21
S&P 500	4551,7	4574,8	-0,51	0,34	2,44	21,18



ASIAN MARKET COMMENTARY

SELECTED HEADLINES

Shares in Asia-Pacific were mixed this morning as investors await the Bank of Japan's latest monetary policy announcement. The central bank is expected to hold steady on policy, according to Reuters. Retail sales in Japan fell 0.6% in September from a year earlier, according to government data released earlier today. MSCI's broadest index of Asia-Pacific shares outside Japan traded little changed.

ASIAN INDICES	CLOSE	PREVIOUS	1D%	5D%	1M%	YTD%
Hang Seng	25628,7	26038,3	-1,57	-1,94	5,87	-5,88
Nikkei 225	29098,2	29106,0	-0,03	-0,54	-3,78	6,03
Shanghai	3562,3	3597,6	-0,98	-0,69	-0,57	2,57



COMMODITIES

BRENT CRUDE (\$)



PLATINUM (\$)



COMMODITY MARKET COMMENTARY

SELECTED HEADLINES

Gold prices consolidated near the key \$1,800 level this morning, supported by a pullback in U.S. bond yields as investors looked forward to key central bank meetings for clues on whether they would consider tightening monetary policy earlier than thought. Oil prices fell earlier today for a second straight session, with Brent hitting its lowest in two weeks after official figures showed a surprise jump in U.S. inventories of crude.

COMMODITY	LAST	CLOSE	% CHG	1D%	1M%	YTD%
Brent Crude (\$)	83,0	84,1	-1,27	-2,45	5,87	73,27
Gold (\$)	1800,5	1797,0	0,19	0,23	2,68	-5,32
Palladium	1980,0	1965,3	0,75	-2,13	-0,16	-19,92
Platinum (\$)	1018,0	1013,5	0,44	-1,79	3,03	-5,46
Silver	24,1	24,1	0,04	-0,39	6,37	-8,82

GOLD (\$)



CURRENCIES

COMMODITY	LAST	CLOSE	% CHG	1D%	1M%	YTD%
USDZAR	15,1	15,1	0,01	1,54	0,86	2,64
GBPZAR	20,7	20,7	0,02	1,38	1,09	3,19
EURZAR	17,5	17,5	0,03	1,62	0,00	-2,49
AUDZAR	11,3	11,3	-0,10	1,79	4,00	0,31
EURUSD	1,2	1,2	0,03	0,06	-0,80	-5,03
USDJPY	113,5	113,8	-0,23	-0,30	2,53	10,19
GBPUSD	1,4	1,4	-0,05	-0,14	0,38	0,61
USDCHF	0,9	0,9	0,04	-0,20	-0,84	3,71
AUDCAD	0,9	0,9	0,00	-0,01	0,99	-5,10

SELECTED HEADLINES

The rand slipped more than 1% on Wednesday, hit by subdued precious metals prices and deeper power cuts by state utility Eskom. At the close of the session, the rand was trading around R15.08 to the dollar or 1.54% weaker. The yen and euro were on the backfoot in early trading today as traders looked for possible catalysts from policy meetings by the Bank of Japan and European Central Bank.

CURRENCY PAIRS

normalised percentage performances



USDZAR



EURUSD

