

GLOBAL OVERVIEW | SELECTED INDICES

SOUTH AFRICAN INDICES	CLOSE	PREVIOUS	1D%	5D%	1M%	YTD%
All Share	67782,2	67464,7	0,47	0,25	6,47	14,09
Top 40	61158,1	60807,9	0,58	0,22	6,80	12,47
Financial 15	14252,0	13956,1	2,12	1,60	-2,31	18,17
Industrial 25	88564,6	87489,6	1,23	1,63	9,18	13,69
Resource 10	62458,4	62989,6	-0,84	-1,83	9,17	8,48
Mid Cap	78973,6	78129,9	1,08	0,96	2,64	22,92
Small Cap	63559,1	64364,4	-1,25	-1,03	1,49	42,97
Banks	8304,2	8106,9	2,43	1,81	-3,59	21,25
General Retailers	8031,0	8031,8	-0,01	1,21	14,29	72,69
Property (J253) - TR	1521,1	1527,8	-0,43	-0,97	-0,88	23,71

AMERICAN INDICES	CLOSE	PREVIOUS	1D%	5D%	1M%	YTD%
Dow Jones	36052,6	35913,8	0,39	0,83	5,03	17,79
Nasdaq	15649,6	15595,9	0,34	2,72	7,43	21,43
S&P 500	4630,7	4613,7	0,37	1,22	6,28	23,28
Dollar Index	94,1	93,9	0,21	0,11	-0,03	4,61
US VIX	16,0	16,4	-2,32	0,31	-24,21	-29,54

EUROPEAN INDICES	CLOSE	PREVIOUS	1D%	5D%	1M%	YTD%
CAC 40	6927,0	6893,3	0,49	2,37	6,28	24,78
DAX 30	15954,5	15806,3	0,94	1,25	5,27	16,30
Eurostoxx 50	4296,2	4280,5	0,37	1,71	6,47	20,93
FTSE	7274,8	7288,6	-0,19	-0,04	3,53	12,60

ASIAN INDICES	CLOSE	PREVIOUS	1D%	5D%	1M%	YTD%
Hang Seng	25099,7	25154,3	-0,22	-3,60	2,13	-7,83
Nikkei 225	29520,9	29647,1	-0,43	1,43	2,61	7,57
Shanghai	3505,6	3544,5	-1,10	-2,56	-1,75	0,94

EARLY MORNING	LAST	CLOSE	% CHG	1D%	5D%	YTD%
Tencent	461,2	464,0	-0,60	-1,19	-7,57	-18,02
BHP Billiton	3596,0	3556,0	1,12	-2,33	-6,94	-16,19

INTERNATIONAL ECONOMIC CALENDAR | SELECTED EVENTS

TIME	AREA	TODAY'S EVENTS & RELEASES	PERIOD	EXP.	PREV.
12:00	EUR	ECB President Lagarde Speaks	---	---	---
12:00	EUR	Unemployment Rate	Sep	7.4%	7.5%
14:15	USD	ADP Non-Farm Employment Change	---	400K	568K
16:00	USD	ISM Services PMI	Oct	61.9	61.9
20:00	USD	Federal Funds Rate	---	<0.25%	<0.25%

TIME	AREA	PREVIOUS SESSION'S RELEASES	PERIOD	EXP.	ACT.
10:55	EUR	German Final Manufacturing PMI	Oct	58.2	57.8
11:00	EUR	Final Manufacturing PMI	Oct	58.5	58.3
11:00	RSA	ABSA Manufacturing PMI	Oct	58	53.6
15:00	RSA	Total New Vehicle Sales	Oct	44K	41K

LOCAL EQUITIES | JSE ALL SHARE COMPANIES

BEST ONE-DAY % PERFORMERS	CODE	CLOSE	1D%	5D%	YTD%
Massmart	MSM	6800	8,56	7,48	61,83
Hosken Cons	HCI	7703	7,11	-3,99	40,05
Old Mutual	OMU	1647	5,64	5,31	38,52
Northam Platinum	NHM	24000	4,92	3,20	14,54
Bytes Technology	BYI	11600	4,85	19,26	73,91
Rand Merchant	RMI	4265	4,51	6,63	33,07
Pepkor	PPH	2497	3,91	5,36	83,20

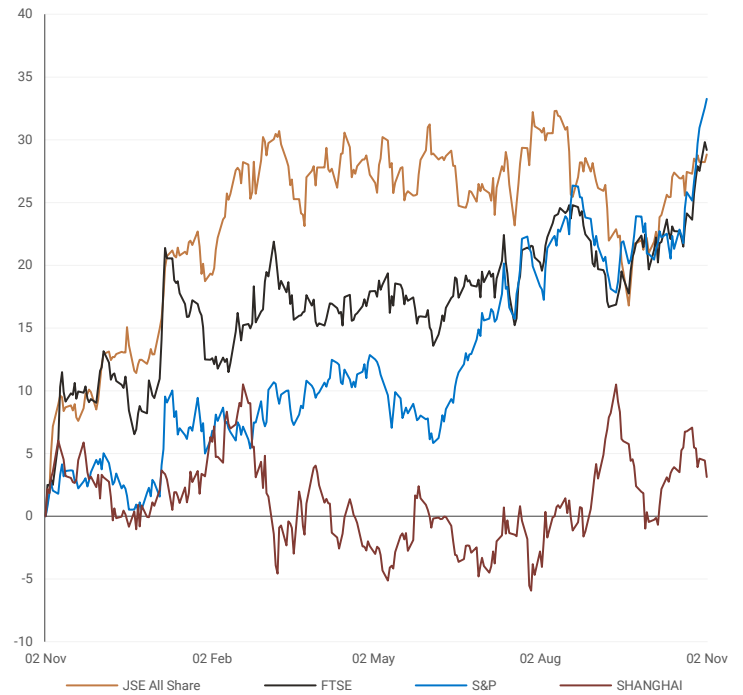
WORST ONE-DAY % PERFORMERS	CODE	CLOSE	1D%	5D%	YTD%
Kumba Iron Ore	KIO	42800	-7,80	-12,60	-31,28
PSG Konsult	KST	1304	-6,12	-5,16	44,89
Exxaro Resources	EXX	15900	-4,93	-3,86	14,47
Afrimat	AFT	4802	-4,72	-7,46	11,62
Sappi	SAP	4458	-4,40	-3,34	35,83
Irongate	IAP	1770	-4,32	2,02	28,73
SA Corp Real Estate	SAC	204	-4,23	-0,49	17,92

DIVIDEND DATA | SELECTED JSE ALL SHARE COMPANIES

COMPANY	CODE	DIVIDEND
Netcare Pref	NTCP	289.54 ZARc

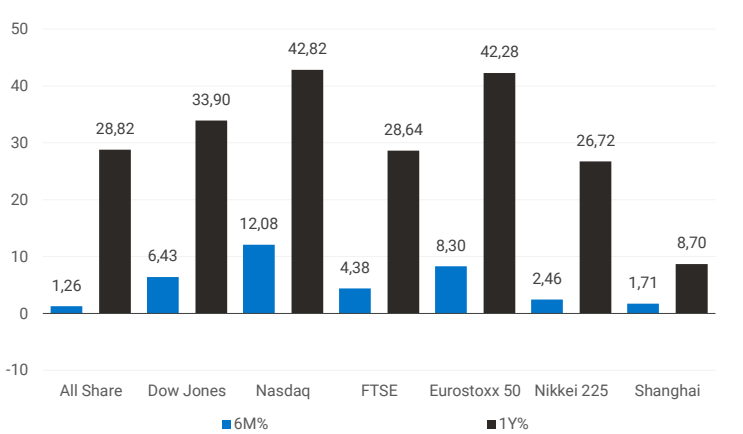
INTERNATIONAL INDICES

normalised percentage performances (in rand terms)



INTERNATIONAL INDICES

6-month & 1-year percentage performances



JSE ALL SHARE INDEX

2020 v 2021



Ex div 03 Nov

COMPANY	CLOSE	PREVIOUS	1D%	5D%	1M%	YTD%
Absa Group	14477	14000	3,41	0,11	-5,53	20,78
Anglo	57006	57520	-0,89	-1,07	7,71	17,54
Angloplat	152479	154340	-1,21	-4,71	16,96	5,66
Anglo Gold Ashanti	28617	28528	0,31	-0,08	20,50	-16,45
Anheuser-Busch Inbev	92900	92987	-0,09	9,41	10,60	-10,59
Bhp Group Plc	39176	40254	-2,68	-3,10	5,26	0,69
Bid Corp	33300	32784	1,57	0,57	7,67	26,60
British American Tobacco Plc	53795	53390	0,76	1,72	4,86	-1,38
Compagnie Financiere	19264	18798	2,48	4,78	22,30	46,94
Capitec	174000	170678	1,95	0,52	-2,79	21,45
Discovery	14085	13993	0,66	0,49	3,57	-8,26
Firstrand	5942	5801	2,43	2,45	-7,37	16,42
Goldfields	14368	14331	0,26	-0,91	17,58	4,44
Glencore Plc	7435	7541	-1,41	-1,61	4,95	58,77
Implats	19841	19799	0,21	-5,99	16,21	-1,73
Kumba Iron Ore	42800	46420	-7,80	-12,60	-10,29	-31,28
Mondi Plc	38121	38060	0,16	2,84	4,47	11,10
Mtn Group	13689	13698	-0,07	0,48	-0,63	127,43
Naspers -N	260568	259014	0,60	-1,76	5,58	-21,78
Prosus Nv	132703	133518	-0,61	-0,16	13,42	-25,13
Stanbank	13840	13543	2,19	0,66	-3,22	8,91
Shoprite	18711	18149	3,10	1,14	5,78	33,65
Sanlam	6315	6275	0,64	1,01	-1,99	7,49
Sasol	25920	25661	1,01	-1,31	-6,06	93,53
Sibanye Stillwater	5464	5334	2,44	2,86	19,59	-8,93
Vodacom Group	13650	13558	0,68	-0,73	-3,89	9,74

SELECTED HEADLINES

Stock markets were up, with the Johannesburg Stock Exchange's Top-40 Index rising 0.58% to 61,158 points and the broader All-Share Index closing 0.46% higher at 67,782 points. Shares in retailer Massmart, majority owned by Walmart, enjoyed an 8.56% boost after it reported higher nine-month comparable sales and cost savings. In other news, The South African Reserve Bank will be weighing whether to raise interest rates at a meeting later this week.

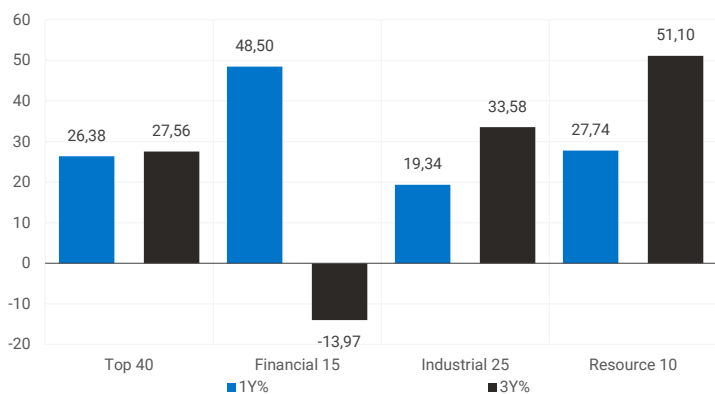
JSE TOP 40 INDEX

last 100 days



LOCAL INDICES

1-year & 3-year percentage performances



EXPECTED COMPANY REPORTING SCHEDULE

COMPANY	CODE	RELEASE	DATE
Motus	MTH	AGM	03 Nov
Textainer	TXT	Quarterly	04 Nov
Truworths	TRU	AGM	04 Nov
Putprop	PPR	AGM	04 Nov
Afrimat	AFT	Interim	04 Nov

BANK & OTHER SELECTED PREFERENCE SHARES

COMPANY	CODE	Close	CLEAN YIELD	APPROX. NXT. LDT
Nedbank	NBKP	945	7,60	13 Apr
Investec Bank	INLP	9570	8,24	08 Dec
Investec Limited	INPR	8150	8,25	08 Dec
Standard Bank	SBPP	8269	7,91	08 Sep
Firstrand Bank	FSRP	8250	7,66	16 Feb
Absa	ABSP	73605	7,94	13 Apr
Capitec	CPIP	10320	6,19	16 Mar
Grindrod	GNDP	7503	8,49	23 Mar
Netcare	NTCP	7999	8,32	03 Nov
Discovery	DSBP	8553	8,22	09 Mar
Invicta	IVTP	8485	9,93	24 Nov

SENS ANNOUNCEMENTS

SELECTED RELEASES

Massmart surges over 8%, as turnaround gains traction

Shares in JSE-listed retail and wholesale group Massmart surged 8.56% on Tuesday to close at R68, after the group reported in a Sens sales update that it has reached R1.3 billion of its R1.9 billion cost-savings target in the 39 weeks to September 26. The market's positive reaction to the news comes as the owner of Game, Makro and Builders Warehouse outlets progresses with its turnaround under CEO Mitchell Slape. This is despite the impact of the July unrest on the retailer, in addition to restrictions on alcohol sales during the trading period. It noted in the sales update that "overall retail sales were subdued in August following the July civil unrest as retailers assessed the damage and began to restore operations". "The Massmart turnaround plan continues to be implemented as scheduled and management is confident that despite the recent headwinds, the strategic growth initiatives announced are bearing fruit and we fully expect this to gain momentum and continue in the medium- to long term," the group said in its Sens statement. "This is clearly evident in cost-saving measures arising from our Smart Spend programme that has resulted in sustainable group-wide efficiencies arising from significantly improved ability to consistently leverage group-wide scale from a dedicated Indirect Spend Management team," it added. Massmart reported that its total sales for the period increased to R60.6 billion, marginally up (0.2%) compared with the prior year. Its stores in South Africa accounted for the bulk of this performance, bringing in R55.4 billion in sales revenue for the 39-week period. The Makro chain reported a positive sales performance, despite the division's food sales being under pressure due to reduced activity in corporate, hospitality, restaurant and catering industries. Makro recorded a 10.8% increase in total sales for continuing operations, up to R19.9 billion, boosted by the increase in liquor sales (when restrictions were eased) and general merchandise sales. "[Makro's] Liquor sales for the 9-month period increased by 48.1%, with general merchandise sales increasing by 9.5%," the group noted. However, its Game retail chain continues to struggle, with the brand seeing sales decrease by 8.2% to R10.9 billion in the period. The group noted that it is likely to suffer losses of R650 million, because its cover with the South African Special Risks Insurance Association (Sasria) does not cover the full extent of its losses.

Move | 8.56% Open | 6309c Close | 6800c High | 6827c Low | 6292c

Net1 in blockbuster R3.7bn fintech acquisition

JSE- and Nasdaq-listed Net1 UEPS Technologies has agreed to buy South African fintech company Connect Group for R3.7 billion in a blockbuster deal that it has described as "transformational" for its business. In a statement, Net1 described Connect Group as a "profitable, high-growth and leading South African fintech" and said the acquisition will help it to become "South Africa's leading fintech platform". Connect Group, which is led by CEO Steven Heilbron, was founded in 2006 and provides fintech solutions to about 44 000 small, medium and micro enterprises (SMMEs) in Southern Africa, many of which are in the informal sector. The company offers four main product lines: a prepaid value-added services platform branded Kazang; a digitised cash management platform called Cash Connect; a merchant lending platform branded Capital Connect; and merchant acquiring solutions called Kazang Pay and Card Connect.

Move | 13.49% Open | 8595c Close | 9322c High | 10000c Low | 8595c

LOCAL EQUITIES | JSE MID CAP COMPANIES

COMPANY	CODE	CLOSE	PREVIOUS	1D%	1M%	YTD%
Aspen	APN	24300	24325	-0,10	-10,16	93,83
African Rainbow	ARI	19575	20353	-3,82	4,33	-25,26
Avi	AVI	7990	7910	1,01	-4,99	9,12
Barworld	BAW	12949	12829	0,94	3,82	42,14
Bidvest Group	BVT	19525	19139	2,02	0,24	24,35
Capco	CCO	3493	3448	1,31	3,40	22,30
Clicks Group	CLS	28306	27884	1,51	4,07	12,03
Coronation	CML	5046	5061	-0,30	-1,06	16,89
Dis-Chem	DCP	3150	3195	-1,41	8,62	49,93
Distell Group	DGH	18446	18277	0,92	-2,40	94,09
Drdgold	DRD	1344	1372	-2,04	10,89	-25,21
Exxaro Resources	EXX	15900	16725	-4,93	-2,15	14,47
Fortress Reit A	FFA	1320	1330	-0,75	-2,29	-3,30
Fortress Reit B	FFB	243	246	-1,22	-4,33	-19,27
Growthpoint	GRT	1306	1296	0,77	-7,38	3,90
Harmony Gold	HAR	5461	5549	-1,59	17,11	-23,73
Investec	INL	7134	7000	1,91	8,88	94,71
Investec	INP	7003	6900	1,49	8,57	86,00
Italtile	ITE	1800	1766	1,93	15,16	21,62
Libhold	LBH	9123	9023	1,11	-3,03	47,19
Life Healthcare	LHC	2455	2432	0,95	6,69	45,96
Multichoice Group	MCG	12240	12147	0,77	8,25	-8,66
Mediclinic Int.	MEI	7171	6973	2,84	11,99	25,94
Montauk Renewables	MKR	16251	16818	-3,37	-5,52	-70,21
Mr Price Group	MRP	20621	19996	3,13	5,86	20,84
Momentum	MTM	1923	1966	-2,19	-9,04	22,02
Ninety One Plc	N91	5434	5444	-0,18	5,33	19,14
Nedbank	NED	18007	17391	3,54	3,77	39,07
Northam Platinum	NHM	24000	22875	4,92	37,02	14,54
Nepi Rockcastle Plc	NRP	10251	10240	0,11	-1,39	9,64
Netcare	NTC	1700	1691	0,53	2,35	36,00
Ninety One	NY1	5214	5266	-0,99	3,15	18,50
Old Mutual	OMU	1647	1559	5,64	-2,77	38,52
Pik N Pay	PIK	6109	5970	2,33	6,67	21,55
Pepkor	PPH	2497	2403	3,91	16,96	83,20
Psg	PSG	7720	7648	0,94	4,07	28,92
Quilter Plc	QLT	3306	3261	1,38	14,83	7,55
Rbplapts	RBP	11150	10954	1,79	49,22	70,54
Redefine	RDF	446	450	-0,89	-1,11	33,93
Remgro	REM	13675	13463	1,57	0,03	42,15
Resilient Reit	RES	5616	5600	0,29	1,17	32,77
Rand Merchant Inv	RMI	4265	4081	4,51	12,24	33,07
Reinet Investments Sca	RNI	27200	27570	-1,34	-2,83	-1,31
Sappi	SAP	4458	4663	-4,40	10,98	35,83
Santam	SNT	25004	25400	-1,56	1,97	-1,86
Spar	SPP	19863	19498	1,87	3,53	4,80
Sirius Real Estate	SRE	2777	2806	-1,03	6,97	43,89
Tigebrands	TBS	19638	19267	1,93	7,12	-5,67
The Foschini Group	TFG	13265	12970	2,27	-0,75	29,65
Thungela Resources	TGA	6066	7271	-16,57	-35,59	1101,19
Telkom	TKG	5048	5073	-0,49	15,51	64,38
Truworths	TRU	5566	5392	3,23	3,36	51,04
Textainer	TXT	59003	60000	-1,66	11,79	107,04
Woolies	WHL	5555	5391	3,04	-3,42	40,49

LOCAL EQUITIES | JSE SMALL CAP COMPANIES

COMPANY	CODE	CLOSE	PREVIOUS	1D%	1M%	YTD%
Advtech	ADH	1928	1920	0,42	19,16	102,95
Altron	AEL	1065	1096	-2,83	-14,80	-2,38
Aeci	AFE	11116	11240	-1,10	2,19	27,77
Alexander Forbes	AFH	445	439	1,37	7,23	12,37
Afrimat	AFT	4802	5040	-4,72	1,63	11,62
Arrowhead Prop.	AHB	390	398	-2,01	-4,65	68,10
African Rainbow Cap.	AIL	510	510	0,00	30,77	14,35
Adcock Ingram	AIP	4920	4899	0,43	6,54	6,96
Astral	ARL	17965	17700	1,50	3,13	28,78
Attacq	ATT	647	655	-1,22	-5,41	30,18
Brait	BAT	412	426	-3,29	-3,96	10,46
Blue Label Telecoms	BLU	541	554	-2,35	-3,39	40,16
Bytes Technology	BYI	11600	11063	4,85	15,05	73,91
City Lodge Hotels	CLH	534	540	-1,11	27,45	113,60
Curro	COH	1211	1230	-1,54	-0,57	27,74
Cashbuild	CSB	26900	26589	1,17	5,39	13,50
Datatec	DTC	4190	4160	0,72	10,50	70,67
Emira	EMI	915	945	-3,17	0,55	37,39
Epp N.V	EPP	1166	1200	-2,83	-5,20	12,66
Equites Property Fund	EQU	2081	2039	2,06	0,34	19,80
Famous Brands	FBR	7198	7366	-2,28	24,10	47,05
Grindrod	GND	500	513	-2,53	5,04	-0,99
Hci	HCI	7703	7192	7,11	4,09	40,05
Hudaco	HDC	13466	13693	-1,66	8,51	66,25
Hammerson Plc	HMN	647	670	-3,43	-2,71	24,42
Hyprop	HYP	2992	2959	1,12	-6,97	1,36
Investec Australia Prop.	IAP	1770	1850	-4,32	6,69	28,73
Investec Prop Fund	IPF	1020	1060	-3,77	-4,58	11,96
Imperial	IPL	6260	6270	-0,16	0,21	67,60
Jse	JSE	10907	10671	2,21	2,63	-3,05
Kap Industrial	KAP	475	472	0,64	-4,23	50,32
Karoo	KRO	53000	52999	0,00	21,23	---
Psg Konsult	KST	1304	1389	-6,12	16,43	44,89
Liberty Two Degrees	L2D	435	430	1,16	-0,68	2,35
Long4Life	L4L	583	598	-2,51	34,02	77,20
Libstar	LBR	660	665	-0,75	3,29	4,27
Lighthouse Capital	LTE	815	837	-2,63	-1,33	19,33
Massmart	MSM	6800	6264	8,56	9,68	61,83
Mas Real Estate Inc	MSP	1760	1790	-1,68	-3,83	38,04
Metair	MTA	2874	2899	-0,86	-4,99	53,28
Motus	MTH	9967	10193	-2,22	-0,23	77,98
M&R Hold	MUR	1376	1395	-1,36	12,88	72,65
Oceana	OCE	6019	6126	-1,75	-6,49	-6,32
Omnia	OMN	6300	6334	-0,54	1,50	36,69
Pan African Resource	PAN	346	361	-4,16	11,97	-27,92
Raubex	RBX	3265	3265	0,00	-8,34	51,86
Rhodes Food Pty	RFG	1250	1243	0,56	0,08	3,48
Reunert	RLO	5050	5071	-0,41	2,94	39,50
Sa Corp Real Estate	SAC	204	213	-4,23	-7,27	17,92
Steinhoff International N.V.	SNH	235	241	-2,49	-18,69	125,96
Super	SPG	3082	3192	-3,45	-14,25	31,65
Stor-Age Property Reit	SSS	1397	1397	0,00	0,94	3,10
Stenprop	STP	3940	3900	1,03	6,60	43,43
Sun Int	SUI	3253	3224	0,90	57,38	162,76
Transaction Capital	TCP	4372	4408	-0,82	6,89	75,65
Tsogo Sun Hotels	TGO	342	350	-2,29	6,88	134,25
Tsogo Sun Gaming	TSG	1216	1227	-0,90	13,64	138,43
Vukile	VKE	1194	1215	-1,73	-0,58	49,25
Wbhovco	WBO	10450	10687	-2,22	-10,71	14,66
Zeder Investments	ZED	315	318	-0,94	2,61	20,69

SOUTH AFRICAN 10-YEAR BOND

2021 v 2020



10-YEAR BOND YIELDS | SELECTED ITEMS (BASIS POINT CHANGE)

REGION	YIELD	1D%	1M%	YTD%
United States	1,55	---	9	65
United Kingdom	1,03	---	3	76
Germany	-0,17	---	6	45
Japan	0,07	---	2	3
South African 10Y	9,63	-1	24	32

GLOBAL INTEREST RATES | SELECTED ITEMS

REGION	CURRENT RATE
United States	0,00%-0,25%
United Kingdom	0,10%
European	0,00%
SA Repo Rate	3,50%
SA Prime Rate	7,00%

GLOBAL MARKETS

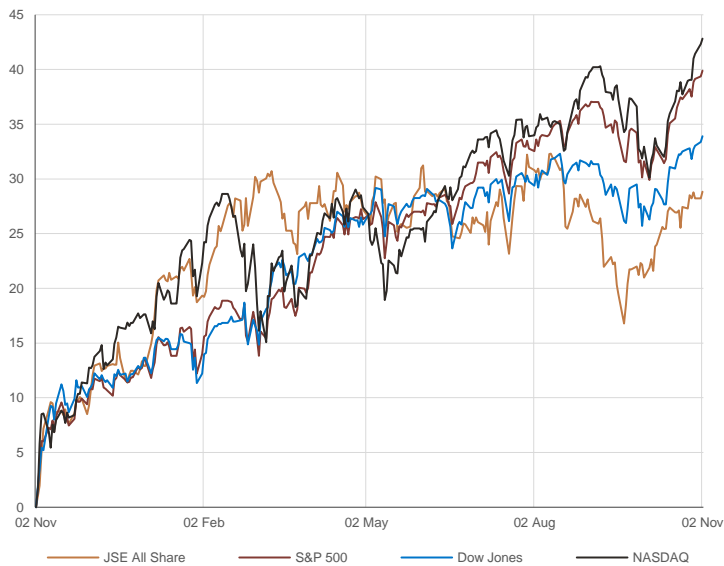
EUROPEAN INDICES

normalised percentage performances



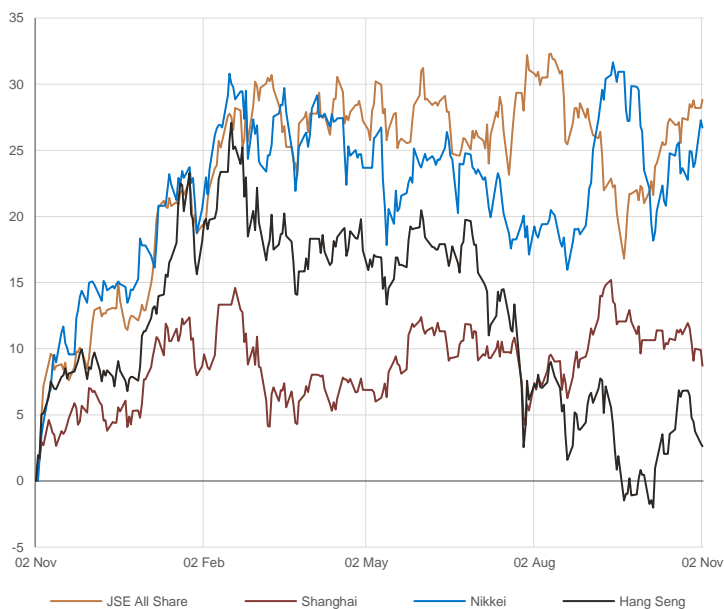
AMERICAN INDICES

normalised percentage performances



ASIAN INDICES

normalised percentage performances



EUROPEAN MARKET COMMENTARY

SELECTED HEADLINES

European stocks closed mixed on Tuesday after a strong start to trading in November. The pan-European Stoxx 600 closed up by 0.11%, with mining stocks shedding 2.8% to lead losses while health care stocks added 1.2%. Oil and gas giant BP beat third-quarter earnings expectations on Tuesday, fuelled by surging energy prices. The British energy major posted an underlying replacement cost profit, a proxy for net profit, of \$3.3 billion for the third quarter, above analyst estimates of \$3.1 billion, according to Refinitiv.

EUROPEAN INDICES	CLOSE	PREVIOUS	1D%	5D%	1M%	YTD%
CAC 40	6927,0	6893,3	0,49	2,37	6,28	24,78
DAX 30	15954,5	15806,3	0,94	1,25	5,27	16,30
Eurostoxx 50	4296,2	4280,5	0,37	1,71	6,47	20,93
FTSE	7274,8	7288,6	-0,19	-0,04	3,53	12,60

CAC 40



DAX



FTSE



AMERICAN MARKET COMMENTARY

SELECTED HEADLINES

The S&P 500 rose to a record high on Tuesday, ahead of a key Federal Reserve decision as strong corporate earnings gave investors confidence in a year-end rally. The small cap benchmark Russell 2000 rose slightly to close at an all-time high. Pfizer shares rose 4.1% after the drug maker's third-quarter profit topped expectations. It also raised its 2021 revenue and EPS outlook. Under Armour shares soared 16.4% after the athletic retailer hiked its annual outlook, revealing the company is seeing progress in improving its brand image under CEO Patrik Frisk.

AMERICAN INDICES	CLOSE	PREVIOUS	1D%	5D%	1M%	YTD%
Dow Jones	36052,6	35913,8	0,39	0,83	5,03	17,79
Nasdaq	15649,6	15595,9	0,34	2,72	7,43	21,43
S&P 500	4630,7	4613,7	0,37	1,22	6,28	23,28

DOW JONES



NASDAQ



S&P 500



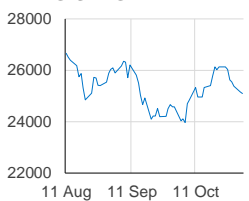
ASIAN MARKET COMMENTARY

SELECTED HEADLINES

Shares in Asia-Pacific were mixed in morning trade today, as investors look ahead to the end of the U.S. Federal Reserve's two-day meeting for clues on tapering. The S&P/ASX 200 in Australia led gains among the region's major markets as it jumped about 1.2%, with shares of Commonwealth Bank of Australia and BHP rising at least 1% each. In South Korea, the Kospi declined 0.72%. Shares of Kakao Pay surged in their Wednesday debut as they more than doubled from their issue price of 90,000 Korean won. The stock was last trading around 108% higher than its issue price.

ASIAN INDICES	CLOSE	PREVIOUS	1D%	5D%	1M%	YTD%
Hang Seng	25099,7	25154,3	-0,22	-3,60	2,13	-7,83
Nikkei 225	29520,9	29647,1	-0,43	1,43	2,61	7,57
Shanghai	3505,6	3544,5	-1,10	-2,56	-1,75	0,94

HANG SENG



NIKKEI



SHANGHAI



COMMODITIES

BRENT CRUDE (\$)

last 100 days



PLATINUM (\$)

last 100 days



COMMODITY MARKET COMMENTARY

SELECTED HEADLINES

Gold prices inched lower this morning as investors awaited the result of a U.S. Federal Reserve policy meeting to assess how the central bank plans to combat rising inflation and ease worries about economic recovery. Meanwhile, oil prices fell earlier today as industry data pointed to a big build in crude oil and distillate stocks in the United States, the world's largest oil consumer, and as pressure mounted on OPEC to increase supply. President Joe Biden, speaking at a climate summit in Glasgow, blamed a surge in oil and gas prices on a refusal by OPEC nations to pump more crude.

COMMODITY	LAST	CLOSE	% CHG	1D%	1M%	YTD%
Brent Crude (\$)	84,0	84,0	0,00	-0,51	6,19	73,17
Gold (\$)	1780,6	1788,1	-0,42	-0,29	1,55	-5,79
Palladium	2024,3	2014,5	0,49	-2,22	4,76	-17,91
Platinum (\$)	1038,4	1041,9	-0,33	-2,49	6,81	-2,81
Silver	23,4	23,5	-0,45	-2,09	4,45	-10,82

GOLD (\$)

last 100 days



CURRENCIES

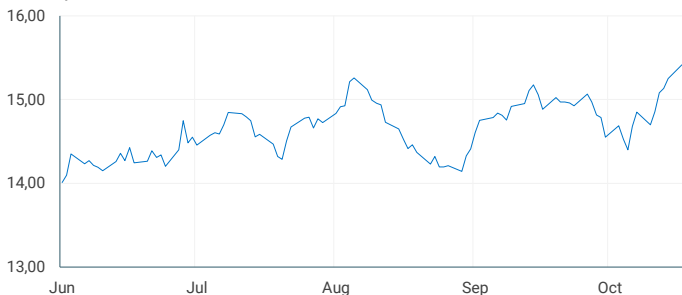
COMMODITY	LAST	CLOSE	% CHG	1D%	1M%	YTD%
USDZAR	15,4	15,4	-0,15	0,15	3,70	5,05
GBPZAR	21,0	21,0	-0,05	-0,29	4,27	4,64
EURZAR	17,9	17,9	-0,16	-0,15	3,65	-0,38
AUDZAR	11,5	11,5	-0,13	-1,16	6,22	1,50
EURUSD	1,2	1,2	0,05	-0,23	-0,12	-5,22
USDJPY	113,9	114,0	-0,09	-0,01	2,61	10,34
GBPUSD	1,4	1,4	0,13	-0,38	0,49	-0,39
USDCHF	0,9	0,9	-0,10	0,62	-1,70	3,32
AUDCAD	0,9	0,9	0,15	-0,90	0,39	-5,82

SELECTED HEADLINES

The rand fell on Tuesday, as markets awaited initial results of Monday's municipal elections and ahead of several key global central bank meetings that could set the tone for risk appetite heading into next year. At the close of the session, the rand was trading around R15.44 to the dollar, 0.15% weaker. Vote counting in municipal elections was under way on Tuesday, with early tallies giving the ruling African National Congress (ANC) 46% of the vote with results in from just over a quarter of polling stations.

USDZAR

last 100 days



CURRENCY PAIRS

normalised percentage performances



EURUSD

last 100 days

