

GLOBAL OVERVIEW | SELECTED INDICES

SOUTH AFRICAN INDICES	CLOSE	PREVIOUS	1D%	5D%	1M%	YTD%
All Share	68587,3	67782,2	1,19	1,65	7,74	15,45
Top 40	61877,0	61158,1	1,18	1,65	8,05	13,79
Financial 15	14241,7	14252,0	-0,07	1,33	-2,38	18,09
Industrial 25	89792,1	88564,6	1,39	2,91	10,70	15,27
Resource 10	63351,7	62458,4	1,43	0,43	10,73	10,03
Mid Cap	79662,3	78973,6	0,87	1,61	3,53	23,99
Small Cap	64352,2	63559,1	1,25	1,19	2,76	44,75
Banks	8271,2	8304,2	-0,40	1,16	-3,97	20,77
General Retailers	8091,2	8031,0	0,75	2,84	15,15	73,98
Property (J253) - TR	1559,2	1521,1	2,50	1,52	1,60	26,81

AMERICAN INDICES	CLOSE	PREVIOUS	1D%	5D%	1M%	YTD%
Dow Jones	36157,6	36052,6	0,29	1,88	5,33	18,14
Nasdaq	15811,6	15649,6	1,04	3,78	8,55	22,68
S&P 500	4660,6	4630,7	0,65	2,39	6,97	24,08
Dollar Index	94,0	94,1	-0,10	0,13	-0,10	4,54
US VIX	15,1	16,0	-5,80	-11,07	-28,61	-33,63

EUROPEAN INDICES	CLOSE	PREVIOUS	1D%	5D%	1M%	YTD%
CAC 40	6950,7	6927,0	0,34	2,92	6,64	25,21
DAX 30	15960,0	15954,5	0,03	1,62	5,30	16,34
Eurostoxx 50	4309,6	4296,2	0,31	2,10	6,80	21,31
FTSE	7248,9	7274,8	-0,36	-0,06	3,16	12,20

ASIAN INDICES	CLOSE	PREVIOUS	1D%	5D%	1M%	YTD%
Hang Seng	25024,8	25099,7	-0,30	-2,36	1,83	-8,10
Nikkei 225	29520,9	29520,9	0,00	1,45	2,61	7,57
Shanghai	3498,5	3505,6	-0,20	-1,79	-1,95	0,73

EARLY MORNING	LAST	CLOSE	% CHG	1D%	5D%	YTD%
Tencent	476,6	469,0	1,62	1,08	-3,70	-17,14
BHP Billiton	3621,0	3594,0	0,75	1,07	-4,57	-15,30

INTERNATIONAL ECONOMIC CALENDAR | SELECTED EVENTS

TIME	AREA	TODAY'S EVENTS & RELEASES	PERIOD	EXP.	PREV.
11:00	EUR	Final Services PMI	Oct	54.7	54.7
14:00	GBP	Official Bank Rate	---	0.10%	0.10%
14:00	GBP	BOE Monetary Policy Report	---	---	---
14:00	GBP	MPC Asset Purchase Facility Votes	---	0-2-7	0-2-7
14:30	USD	Unemployment Claims	---	273K	281K

TIME	AREA	PREVIOUS SESSION'S RELEASES	PERIOD	EXP.	ACT.
12:00	EUR	ECB President Lagarde Speaks	---	---	---
12:00	EUR	Unemployment Rate	Sep	7.4%	7.4%
14:15	USD	ADP Non-Farm Employment Change	---	400K	571K
16:00	USD	ISM Services PMI	Oct	61.9	66.7
20:00	USD	Federal Funds Rate	---	<0.25%	<0.25%

LOCAL EQUITIES | JSE ALL SHARE COMPANIES

BEST ONE-DAY % PERFORMERS	CODE	CLOSE	1D%	5D%	YTD%
Redefine Properties	RDF	483	8,30	5,69	45,05
Fortress REIT B	FFB	263	8,23	15,35	-12,62
Oceana	OCE	6467	7,44	5,03	0,65
Investec Property Fund	IPF	1079	5,78	3,55	18,44
Dis-Chem Pharmacies	DCP	3325	5,56	5,52	58,26
Raubex	RBX	3435	5,21	4,09	59,77
Exxaro Resources	EXX	16684	4,93	1,34	20,12

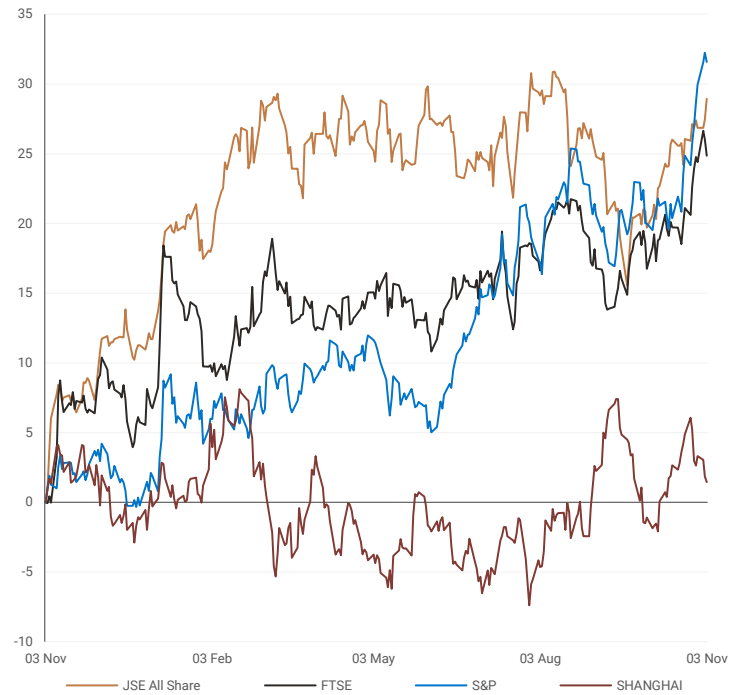
WORST ONE-DAY % PERFORMERS	CODE	CLOSE	1D%	5D%	YTD%
Old Mutual	OMU	1420	-13,78	-9,15	19,43
African Rainbow Cap	AIL	486	-4,71	-2,80	8,97
Famous Brands	FBR	6913	-3,96	0,19	41,23
RFG	RFG	1210	-3,20	2,11	0,17
PSG Konsult	KST	1270	-2,61	-4,15	41,11
Steinhoff Int N.V.	SNH	229	-2,55	3,15	120,19
Nedbank	NED	17599	-2,27	1,33	35,92

DIVIDEND DATA | SELECTED JSE ALL SHARE COMPANIES

COMPANY	CODE	DIVIDEND
Long4Life	L4L	10 ZARc
Altron	AEL	7 ZARc
Vunani	VUN	6.5 ZARc
AfroCentric	ACT	17 ZARc
Alviva	AVV	29 ZARc

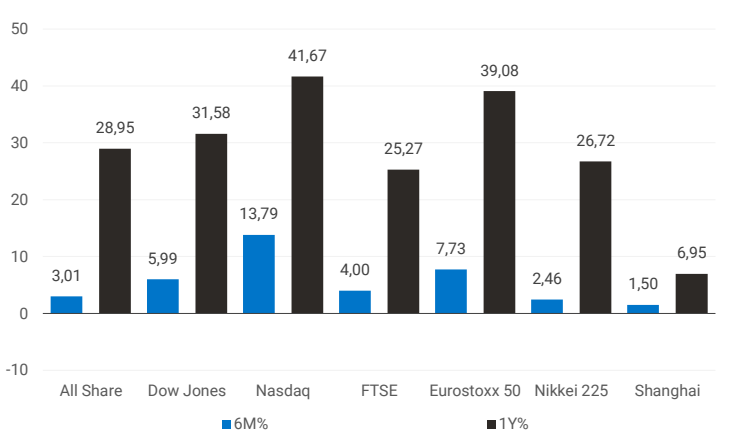
INTERNATIONAL INDICES

normalised percentage performances (in rand terms)



INTERNATIONAL INDICES

6-month & 1-year percentage performances



JSE ALL SHARE INDEX

2020 v 2021



Last date to trade 09 Nov

COMPANY	CLOSE	PREVIOUS	1D%	5D%	1M%	YTD%
Absa Group	14279	14477	-1,37	0,15	-6,82	19,13
Anglo	58392	57006	2,43	2,98	10,33	20,40
Angloplat	156001	152479	2,31	-0,04	19,67	8,10
Anglo Gold Ashanti	28035	28617	-2,03	-3,39	18,05	-18,15
Anheuser-Busch Inbev	93474	92900	0,62	9,02	11,29	-10,03
Bhp Group Plc	39754	39176	1,48	-1,37	6,81	2,18
Bid Corp	32820	33300	-1,44	-0,57	6,12	24,78
British American Tobacco Plc	53380	53795	-0,77	-0,73	4,05	-2,14
Compagnie Financiere	19509	19264	1,27	4,94	23,86	48,81
Capitec	174640	174000	0,37	1,14	-2,44	21,90
Discovery	13952	14085	-0,94	0,19	2,59	-9,13
Firstrand	5943	5942	0,02	1,54	-7,36	16,44
Goldfields	14182	14368	-1,29	-3,33	16,06	3,09
Glencore Plc	7565	7435	1,75	2,74	6,79	61,54
Implats	20270	19841	2,16	-2,63	18,73	0,40
Kumba Iron Ore	42793	42800	-0,02	-11,22	-10,30	-31,29
Mondi Plc	38255	38121	0,35	2,42	4,84	11,49
Mtn Group	13831	13689	1,04	1,05	0,40	129,79
Naspers -N	269258	260568	3,34	2,81	9,10	-19,17
Prosus Nv	136500	132703	2,86	3,57	16,66	-22,99
Stanbank	13740	13840	-0,72	-0,29	-3,92	8,12
Shoprite	19031	18711	1,71	3,85	7,59	35,94
Sanlam	6362	6315	0,74	1,56	-1,26	8,29
Sasol	26169	25920	0,96	0,19	-5,15	95,39
Sibanye Stillwater	5438	5464	-0,48	2,86	19,02	-9,37
Vodacom Group	13682	13650	0,23	0,38	-3,66	9,99

SELECTED HEADLINES

Local stocks rose yesterday, with the Johannesburg Stock Exchange's Top-40 Index climbing 1.18% to 61,877 points and the broader All-Share Index closing up 1.19% to 68,587 points. Shares in pharmacist Dis-Chem ended the day 5.56% higher after its half-year results showed a 35.5% jump in earnings. Partial results from Monday's municipal elections showed the ruling African National Congress (ANC) on 46% of the vote with three quarters of results in, meaning it looked almost certain to get less than 50% of votes for the first time in any election since it ended white minority rule in 1994.

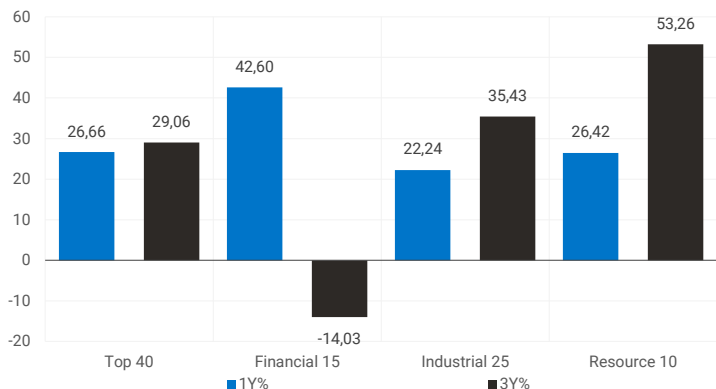
JSE TOP 40 INDEX

last 100 days



LOCAL INDICES

1-year & 3-year percentage performances



EXPECTED COMPANY REPORTING SCHEDULE

COMPANY	CODE	RELEASE	DATE
Textainer	TXT	Quarterly	04 Nov
Truworths	TRU	AGM	04 Nov
Putprop	PPR	AGM	04 Nov
Afrimat	AFT	Interim	04 Nov
Argent	ART	Interim	04 Nov

BANK & OTHER SELECTED PREFERENCE SHARES

COMPANY	CODE	Close	CLEAN YIELD	APPROX. NXT. LDT
Nedbank	NBKP	950	7,60	13 Apr
Investec Bank	INLP	9700	8,25	08 Dec
Investec Limited	INPR	8330	8,25	08 Dec
Standard Bank	SBPP	8276	7,91	08 Sep
Firstrand Bank	FSRP	8250	7,66	16 Feb
Absa	ABSP	76000	7,94	13 Apr
Capitec	CPIP	10320	6,19	16 Mar
Grindrod	GNDP	7550	8,49	23 Mar
Netcare	NTCP	7899	8,33	03 Nov
Discovery	DSBP	8600	8,22	09 Mar
Invicta	IVTP	8485	9,93	24 Nov

SENS ANNOUNCEMENTS

SELECTED RELEASES

Dis-Chem resumes interim dividend

Burgeoning pharmacy retail and healthcare group Dis-Chem has resumed paying an interim dividend and declared a payout of 19.5 cents per share on Wednesday for its half-year ended August 31, 2021. It comes as the group reported strong double-digit growth in revenue of 16.6% for the period, to R14.9 billion. This resulted in its headline earnings per share (Heps) surging 35.3% from 36 cents at HY2020 to 48.7 cents for its latest half-year. Dis-Chem's return to paying out an interim dividend follows the group opting to withhold dividends for its corresponding half year in 2020 in the wake of the Covid-19 pandemic and due to the group prioritising acquisitions, such as that of baby-focused retail chain Baby City. "Earnings attributable to shareholders and headline earnings increased by 34.6% and 35.3% respectively over the previous corresponding period. Earnings per share and Heps are 48.4 cents and 48.7 cents per share respectively, an increase of 34.4% and 35.3% respectively," pointed out. Dis-Chem said retail revenue grew by 16% to R13.2 billion. However, comparable store revenue grew at 6.8%. "These stores together with the Baby City stores acquired on January 1, 2021 contributed R822 million to revenue. The group opened its landmark 200th Dis-Chem store in October," it added.

Move | 5.56% Open | 3195c Close | 3325c High | 3333c Low | 3194c

Mr Price expects half-year profit to surge to 40%

Clothing and homeware retail giant Mr Price Group expects its half-year profit for the period ended October 2 to increase by between 30% and 40%, its performance boosted by improved retail trading performance. The JSE-listed company reported in a Sens trading update on Wednesday that it expects its headline earnings per share (Heps) for the period to increase by between 433.6 cents per and 466.9 cents per share. In the 2020 half-year period, the retailer experienced a major slump in profit that was aggravated by harsh lockdown restrictions. "In this affected base, all the group's South African stores were closed during the nationwide lockdown between 27 March and 30 April 2020, with additional subsequent trading restrictions enforced due to the Covid-19 pandemic. Heps declined 24.8% in this corresponding period," Mr Price noted. The group has received an interim insurance payment of R181 million from the South African Special Risks Insurance Association (Sasria) and said it anticipates further payments in the second half of the year. "The associated business interruption losses continue to be assessed and the group anticipates further insurance payments to be received in H2 FY2022 and H1 FY2023," it clarified.

Move | 2.96% Open | 21000c Close | 21232c High | 21232c Low | 20786c

LOCAL EQUITIES | JSE MID CAP COMPANIES

COMPANY	CODE	CLOSE	PREVIOUS	1D%	1M%	YTD%
Aspen	APN	23927	24300	-1,53	-11,54	90,85
African Rainbow	ARI	20000	19575	2,17	6,60	-23,64
Avi	AVI	8096	7990	1,33	-3,73	10,57
Barworld	BAW	13250	12949	2,32	6,23	45,44
Bidvest Group	BVT	19624	19525	0,51	0,74	24,98
Capco	CCO	3457	3493	-1,03	2,34	21,04
Clicks Group	CLS	28701	28306	1,40	5,52	13,59
Coronation	CML	5186	5046	2,77	1,69	20,13
Dis-Chem	DCP	3325	3150	5,56	14,66	58,26
Distell Group	DGH	18279	18446	-0,91	-3,29	92,33
Drdgold	DRD	1352	1344	0,60	11,55	-24,76
Exxaro Resources	EXX	16684	15900	4,93	2,67	20,12
Fortress Reit A	FFA	1323	1320	0,23	-2,07	-3,08
Fortress Reit B	FFB	263	243	8,23	3,54	-12,62
Growthpoint	GRT	1329	1306	1,76	-5,74	5,73
Harmony Gold	HAR	5406	5461	-1,01	15,93	-24,50
Investec	INL	7163	7134	0,41	9,33	95,50
Investec	INP	7019	7003	0,23	8,82	86,43
Italtile	ITE	1822	1800	1,22	16,57	23,11
Libhold	LBH	9177	9123	0,59	-2,46	48,06
Life Healthcare	LHC	2484	2455	1,18	7,95	47,68
Multichoice Group	MCG	12048	12240	-1,57	6,55	-10,09
Mediclinic Int.	MEI	7190	7171	0,26	12,29	26,27
Montauk Renewables	MKR	16400	16251	0,92	-4,65	-69,93
Mr Price Group	MRP	21232	20621	2,96	9,00	24,42
Momentum	MTM	1937	1923	0,73	-8,37	22,91
Ninety One Plc	N91	5441	5434	0,13	5,47	19,29
Nedbank	NED	17599	18007	-2,27	1,42	35,92
Northam Platinum	NHM	24806	24000	3,36	41,62	18,39
Nepi Rockcastle Plc	NRP	10377	10251	1,23	-0,17	10,98
Netcare	NTC	1713	1700	0,76	3,13	37,04
Ninety One	NY1	5254	5214	0,77	3,94	19,41
Old Mutual	OMU	1420	1647	-13,78	-16,17	19,43
Pik N Pay	PIK	6125	6109	0,26	6,95	21,87
Pepkor	PPH	2520	2497	0,92	18,03	84,89
Psg	PSG	7825	7720	1,36	5,49	30,68
Quilter Plc	QLT	3364	3306	1,75	16,85	9,43
Rbplapts	RBP	11278	11150	1,15	50,94	72,50
Redefine	RDF	483	446	8,30	7,10	45,05
Remgro	REM	13603	13675	-0,53	-0,50	41,40
Resilient Reit	RES	5750	5616	2,39	3,58	35,93
Rand Merchant Inv	RMI	4207	4265	-1,36	10,71	31,26
Reinet Investments Sca	RNI	27817	27200	2,27	-0,63	0,93
Sappi	SAP	4566	4458	2,42	13,67	39,12
Santam	SNT	25600	25004	2,38	4,40	0,48
Spar	SPP	19967	19863	0,52	4,07	5,34
Sirius Real Estate	SRE	2814	2777	1,33	8,40	45,80
Tigebrands	TBS	19800	19638	0,82	8,01	-4,89
The Foschini Group	TFG	13316	13265	0,38	-0,37	30,15
Thungela Resources	TGA	6484	6066	6,89	-31,15	1183,96
Telkom	TKG	5268	5048	4,36	20,55	71,54
Truworths	TRU	5651	5566	1,53	4,94	53,35
Textainer	TXT	59459	59003	0,77	12,65	108,64
Woolies	WHL	5624	5555	1,24	-2,23	42,24

LOCAL EQUITIES | JSE SMALL CAP COMPANIES

COMPANY	CODE	CLOSE	PREVIOUS	1D%	1M%	YTD%
Advtech	ADH	1929	1928	0,05	19,22	103,05
Altron	AEL	1065	1065	0,00	-14,80	-2,38
Aeci	AFE	11252	11116	1,22	3,44	29,33
Alexander Forbes	AFH	448	445	0,67	7,95	13,13
Afrimat	AFT	4833	4802	0,65	2,29	12,34
Arrowhead Prop.	AHB	390	390	0,00	-4,65	68,10
African Rainbow Cap.	AIL	486	510	-4,71	24,62	8,97
Adcock Ingram	AIP	4926	4920	0,12	6,67	7,09
Astral	ARL	18045	17965	0,45	3,59	29,35
Attacq	ATT	660	647	2,01	-3,51	32,80
Brait	BAT	417	412	1,21	-2,80	11,80
Blue Label Telecoms	BLU	542	541	0,18	-3,21	40,41
Bytes Technology	BYI	11535	11600	-0,56	14,40	72,94
City Lodge Hotels	CLH	544	534	1,87	29,83	117,60
Curro	COH	1251	1211	3,30	2,71	31,96
Cashbuild	CSB	26740	26900	-0,59	4,76	12,83
Datatec	DTC	4213	4190	0,55	11,10	71,61
Emira	EMI	921	915	0,66	1,21	38,29
Epp N.V	EPP	1180	1166	1,20	-4,07	14,01
Equites Property Fund	EQU	2140	2081	2,84	3,18	23,20
Famous Brands	FBR	6913	7198	-3,96	19,19	41,23
Grindrod	GND	502	500	0,40	5,46	-0,59
Hci	HCI	7900	7703	2,56	6,76	43,64
Hudaco	HDC	13750	13466	2,11	10,80	69,75
Hammerson Plc	HMN	657	647	1,55	-1,20	26,35
Hyprop	HYP	3090	2992	3,28	-3,92	4,67
Investec Australia Prop.	IAP	1776	1770	0,34	7,05	29,16
Investec Prop Fund	IPF	1079	1020	5,78	0,94	18,44
Imperial	IPL	6279	6260	0,30	0,51	68,11
Jse	JSE	11087	10907	1,65	4,33	-1,45
Kap Industrial	KAP	469	475	-1,26	-5,44	48,42
Karoo	KRO	55000	53000	3,77	25,81	---
Psg Konsult	KST	1270	1304	-2,61	13,39	41,11
Liberty Two Degrees	L2D	430	435	-1,15	-1,83	1,18
Long4Life	L4L	585	583	0,34	34,48	77,81
Libstar	LBR	673	660	1,97	5,32	6,32
Lighthouse Capital	LTE	824	815	1,10	-0,24	20,64
Massmart	MSM	7125	6800	4,78	14,92	69,56
Mas Real Estate Inc	MSP	1830	1760	3,98	0,00	43,53
Metair	MTA	2900	2874	0,90	-4,13	54,67
Motus	MTH	10285	9967	3,19	2,95	83,66
M&R Hold	MUR	1360	1376	-1,16	11,57	70,64
Oceana	OCE	6467	6019	7,44	0,47	0,65
Omnia	OMN	6220	6300	-1,27	0,21	34,95
Pan African Resource	PAN	348	346	0,58	12,62	-27,50
Raubex	RBX	3435	3265	5,21	-3,57	59,77
Rhodes Food Pty	RFG	1210	1250	-3,20	-3,12	0,17
Reunert	RLO	5241	5050	3,78	6,83	44,78
Sa Corp Real Estate	SAC	211	204	3,43	-4,09	21,97
Steinhoff International N.V.	SNH	229	235	-2,55	-20,76	120,19
Super	SPG	3075	3082	-0,23	-14,44	31,35
Stor-Age Property Reit	SSS	1424	1397	1,93	2,89	5,09
Stenprop	STP	3950	3940	0,25	6,87	43,79
Sun Int	SUI	3305	3253	1,60	59,89	166,96
Transaction Capital	TCP	4493	4372	2,77	9,85	80,51
Tsogo Sun Hotels	TGO	340	342	-0,58	6,25	132,88
Tsogo Sun Gaming	TSG	1220	1216	0,33	14,02	139,22
Vukile	VKE	1205	1194	0,92	0,33	50,63
Wbhovco	WBO	10727	10450	2,65	-8,34	17,70
Zeder Investments	ZED	317	315	0,63	3,26	21,46

SOUTH AFRICAN 10-YEAR BOND

2021 v 2020



10-YEAR BOND YIELDS | SELECTED ITEMS (BASIS POINT CHANGE)

REGION	YIELD	1D%	1M%	YTD%
United States	1,6	-1	12	83
United Kingdom	1,07	---	6	87
Germany	-0,17	---	5	47
Japan	0,07	---	2	4
South African 10Y	9,68	5	29	42

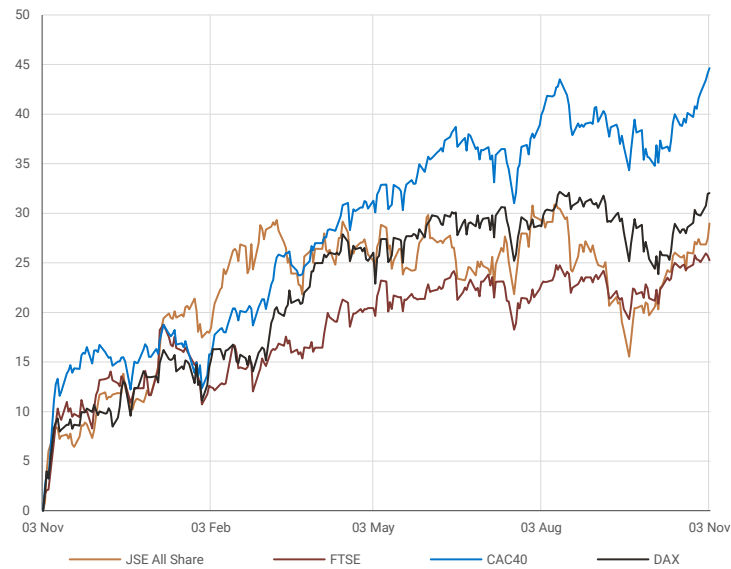
GLOBAL INTEREST RATES | SELECTED ITEMS

REGION	CURRENT RATE
United States	0,00%-0,25%
United Kingdom	0,10%
European	0,00%
SA Repo Rate	3,50%
SA Prime Rate	7,00%

GLOBAL MARKETS

EUROPEAN INDICES

normalised percentage performances



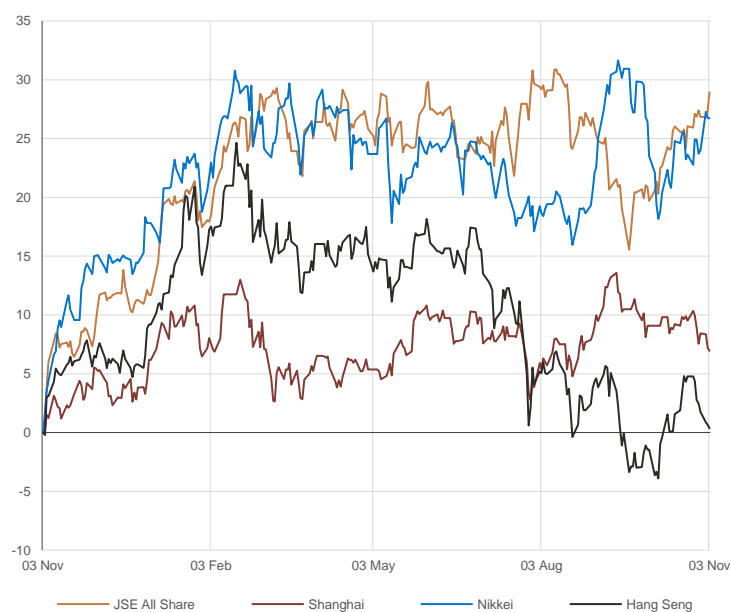
AMERICAN INDICES

normalised percentage performances



ASIAN INDICES

normalised percentage performances



EUROPEAN MARKET COMMENTARY

SELECTED HEADLINES

European stocks closed slightly higher Wednesday as investors prepared for the latest comment and monetary policy decision from the U.S. Federal Reserve. The pan-European Stoxx 600 closed up by 0.3%, with oil and gas stocks dropping 3% while miners gained 1%. European Central Bank President Christine Lagarde told an event in Lisbon on Wednesday that the ECB is very unlikely to hike interest rates in 2022 as inflation remains too low, pushing back market expectations. On the data front, euro zone unemployment fell to 7.4% in September from 7.5% in August, official statistics confirmed on Wednesday, in line with expectations.

EUROPEAN INDICES	CLOSE	PREVIOUS	1D%	5D%	1M%	YTD%
CAC 40	6950,7	6927,0	0,34	2,92	6,64	25,21
DAX 30	15960,0	15954,5	0,03	1,62	5,30	16,34
Eurostoxx 50	4309,6	4296,2	0,31	2,10	6,80	21,31
FTSE	7248,9	7274,8	-0,36	-0,06	3,16	12,20



AMERICAN MARKET COMMENTARY

SELECTED HEADLINES

US stocks rose to new records on Wednesday after the Federal Reserve made its long-anticipated announcement to slow the monthly bond purchases the central bank implemented during the pandemic. The Fed said it will begin tapering bond purchases "later this month" and will reduce buying by \$15 billion a month, putting it on track to end the quantitative easing by the middle of next year. This timeline and amount were in line with expectations. However, the Fed said it is prepared to alter the pace of purchases if warranted by changes in the economic outlook. The central bank also subtly reframed its stance on inflation, acknowledging that price increases have been more rapid and persistent than central bankers had expected.

AMERICAN INDICES	CLOSE	PREVIOUS	1D%	5D%	1M%	YTD%
Dow Jones	36157,6	36052,6	0,29	1,88	5,33	18,14
Nasdaq	15811,6	15649,6	1,04	3,78	8,55	22,68
S&P 500	4660,6	4630,7	0,65	2,39	6,97	24,08



ASIAN MARKET COMMENTARY

SELECTED HEADLINES

Shares in Asia-Pacific rose this morning trade following the U.S. Federal Reserve's announcement that it will start tapering the pace of its bond purchases later in November. The Australian stock market is modestly higher today, extending the gains in the previous session, with the benchmark S&P/ASX 200 back above the 7,400 level, following the broadly positive cues overnight from Wall Street, as traders reacted positively to the US Federal Reserve's monetary policy announcement. Among major miners, Rio Tinto, Fortescue Metals and OZ Minerals are losing more than 1% each.

ASIAN INDICES	CLOSE	PREVIOUS	1D%	5D%	1M%	YTD%
Hang Seng	25024,8	25099,7	-0,30	-2,36	1,83	-8,10
Nikkei 225	29520,9	29520,9	0,00	1,45	2,61	7,57
Shanghai	3498,5	3505,6	-0,20	-1,79	-1,95	0,73



COMMODITIES

BRENT CRUDE (\$)

last 100 days



PLATINUM (\$)

last 100 days



COMMODITY MARKET COMMENTARY

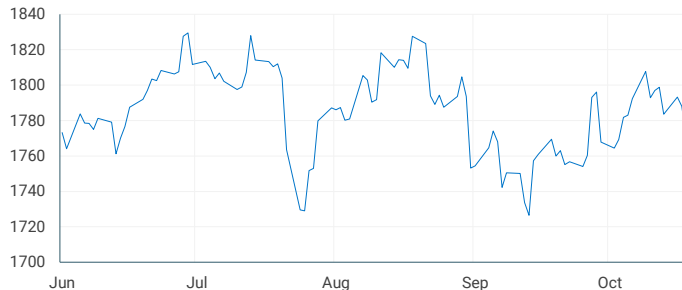
SELECTED HEADLINES

Gold prices bounced back from a three-week low earlier today as the dollar weakened after the U.S. Federal Reserve approved plans to unwind its stimulus program this month while retaining low interest rates for some time. Oil prices extended declines earlier today, pushing U.S. futures below \$80 a barrel, after Iran and world powers agreed to resume nuclear talks this month that could lead to the removal of U.S. sanctions on Iranian oil, increasing global supplies.

COMMODITY	LAST	CLOSE	% CHG	1D%	1M%	YTD%
Brent Crude (\$)	81,4	81,3	0,07	-3,21	2,78	67,60
Gold (\$)	1774,8	1769,8	0,29	-1,02	0,51	-6,76
Palladium	2026,0	2009,0	0,85	-0,27	4,47	-18,13
Platinum (\$)	1042,0	1033,4	0,83	-0,82	5,94	-3,60
Silver	23,6	23,5	0,14	-0,06	4,39	-10,87

GOLD (\$)

last 100 days



CURRENCIES

COMMODITY	LAST	CLOSE	% CHG	1D%	1M%	YTD%
USDZAR	15,3	15,3	0,18	-1,13	2,53	3,86
GBPZAR	20,9	20,9	-0,09	-0,57	3,68	4,04
EURZAR	17,7	17,7	-0,04	-0,87	2,75	-1,25
AUDZAR	11,4	11,4	0,09	-0,90	5,26	0,58
EURUSD	1,2	1,2	-0,21	0,28	0,16	-4,95
USDJPY	114,2	114,0	0,15	0,04	2,64	10,38
GBPUSD	1,4	1,4	-0,24	0,55	1,05	0,16
USDCHF	0,9	0,9	0,07	-0,32	-2,01	2,99
AUDCAD	0,9	0,9	0,06	0,07	0,45	-5,76

SELECTED HEADLINES

The rand on Wednesday fell further back towards an eight-month low hit in the previous session, as the country's ruling party headed for its poorest ever electoral showing in a municipal poll held on Monday. At the close of the session, the rand was trading around R15.26 to the dollar, 1.13% firmer. The rand was being moved by global factors. Internationally, markets were watching a meeting of the U.S. Federal Reserve, when was is expected to approve plans to scale back pandemic-era stimulus.

USDZAR

last 100 days



CURRENCY PAIRS

normalised percentage performances



EURUSD

last 100 days

