

GLOBAL OVERVIEW | SELECTED INDICES

SOUTH AFRICAN INDICES	CLOSE	PREVIOUS	1D%	5D%	1M%	YTD%
All Share	69131,6	68279,4	1,25	1,43	4,58	16,37
Top 40	62382,0	61537,8	1,37	1,58	4,56	14,72
Financial 15	14118,4	14134,8	-0,12	-1,18	0,27	17,07
Industrial 25	89627,3	89851,7	-0,25	0,59	7,81	15,05
Resource 10	65139,5	62450,6	4,31	4,30	3,06	13,14
Mid Cap	78891,0	78334,9	0,71	-0,79	2,45	22,79
Small Cap	65329,9	65392,0	-0,09	0,19	3,20	46,95
Banks	8229,3	8236,3	-0,08	-1,18	0,40	20,16
General Retailers	8083,6	8063,6	0,25	-1,20	20,10	73,82
Property (J253) - TR	1591,9	1595,2	-0,20	0,85	3,47	29,47

AMERICAN INDICES	CLOSE	PREVIOUS	1D%	5D%	1M%	YTD%
Dow Jones	35921,2	36079,9	-0,44	-0,56	4,13	17,36
Nasdaq	15704,3	15622,7	0,52	-1,48	8,41	21,85
S&P 500	4649,3	4646,7	0,06	-0,66	6,61	23,78
Dollar Index	95,2	94,9	0,38	0,99	0,92	5,93
US VIX	17,7	18,7	-5,71	14,38	-11,70	-22,37

EUROPEAN INDICES	CLOSE	PREVIOUS	1D%	5D%	1M%	YTD%
CAC 40	7059,6	7046,2	0,19	1,03	7,44	27,17
DAX 30	16083,1	16067,8	0,10	0,33	5,82	17,23
Eurostoxx 50	4358,0	4348,8	0,21	0,57	7,01	22,67
FTSE	7384,2	7340,2	0,60	1,43	3,32	14,30

ASIAN INDICES	CLOSE	PREVIOUS	1D%	5D%	1M%	YTD%
Hang Seng	25248,0	24996,1	1,01	0,09	-0,30	-7,28
Nikkei 225	29277,9	29106,8	0,59	-1,73	2,74	6,68
Shanghai	3532,8	3492,5	1,15	0,17	-1,64	1,72

EARLY MORNING	LAST	CLOSE	% CHG	1D%	5D%	YTD%
Tencent	485,4	477,6	1,63	-1,24	-0,67	-15,62
BHP Billiton	3764,0	3666,0	2,67	2,57	1,75	-13,60

INTERNATIONAL ECONOMIC CALENDAR | SELECTED EVENTS

TIME	AREA	TODAY'S EVENTS & RELEASES	PERIOD	EXP.	PREV.
AD	EUR	ECOFIN Meetings	---	---	---
17:00	USD	JOLTS Job Openings	Sep	10.02M	10.44M
17:00	USD	Prelim UoM Consumer Sentiment	Nov	72.5	71.7
17:00	USD	Prelim UoM Inflation Expectations	Nov	---	4.8%
19:10	USD	FOMC Member Williams Speaks	---	---	---

TIME	AREA	PREVIOUS SESSION'S RELEASES	PERIOD	EXP.	ACT.
11:30	RSA	Mining Production YoY	Sep	1.8%	-3.4%
11:30	RSA	Mining Production MoM	Sep	1.4%	-3.7%
11:30	RSA	Gold Production YoY	Sep	0,14	-6.9%
13:00	RSA	Manufacturing Production YoY	Sep	2.2%	1.3%
14:00	RSA	Medium-Term Budget Policy Statement	---	---	---

LOCAL EQUITIES | JSE ALL SHARE COMPANIES

BEST ONE-DAY % PERFORMERS	CODE	CLOSE	1D%	5D%	YTD%
Harmony GM Co	HAR	6340	8,28	16,80	-11,45
Anglo American Plat	AMS	174078	7,23	8,16	20,62
Kumba Iron Ore	KIO	42934	6,21	2,68	-31,06
Anglo American plc	AGL	59269	5,81	4,98	22,20
Impala Platinum	IMP	20845	5,44	-0,51	3,24
African Rainbow Min	ARI	20650	5,14	3,64	-21,16
Gold Fields	GFI	16161	4,91	13,07	17,47

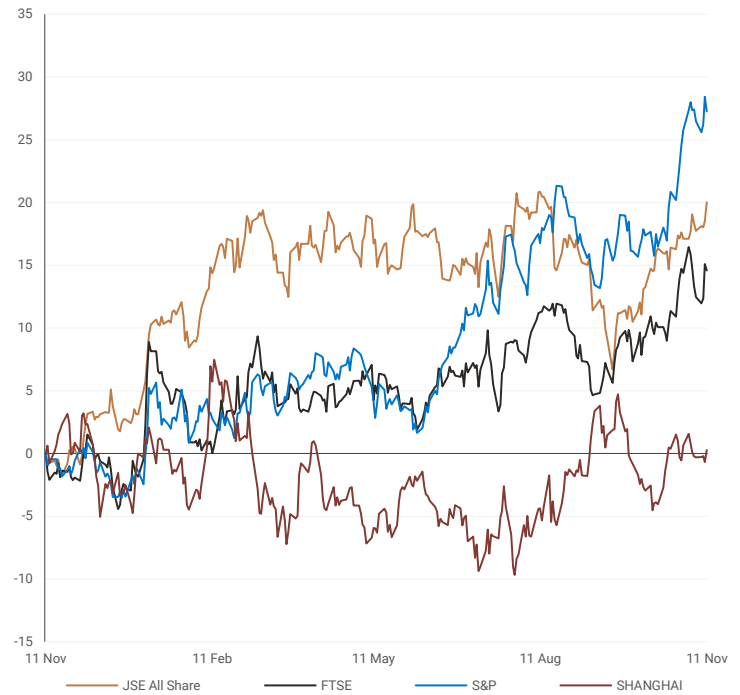
WORST ONE-DAY % PERFORMERS	CODE	CLOSE	1D%	5D%	YTD%
Sappi	SAP	4079	-5,97	-9,48	24,28
Curro	COH	1225	-5,48	-2,39	29,22
Hosken Cons	HCI	7980	-4,19	2,02	45,09
Reunert	RLO	5268	-4,08	-3,80	45,52
RFG	RFG	1191	-4,03	-4,41	-1,41
Allied Electronics Corp A	AEL	1032	-4,00	-1,71	-5,41
Libstar	LBR	655	-3,96	-4,38	3,48

DIVIDEND DATA | SELECTED JSE ALL SHARE COMPANIES

COMPANY	CODE	DIVIDEND	COMPANY	CODE	DIVIDEND
Spear REIT	SEA	33.06 ZARc	Sappi	SAPCB	26466 ZARc
MiX Telematics	MIX	4 ZARc	Bytes Technology	BYI	2GBPP
Nvest	NVE	5.75 ZARc	Irongate	IAP	4.53 AUD
Octodec	OCT	50 ZARc			
Remgro	REM	60 ZARc			

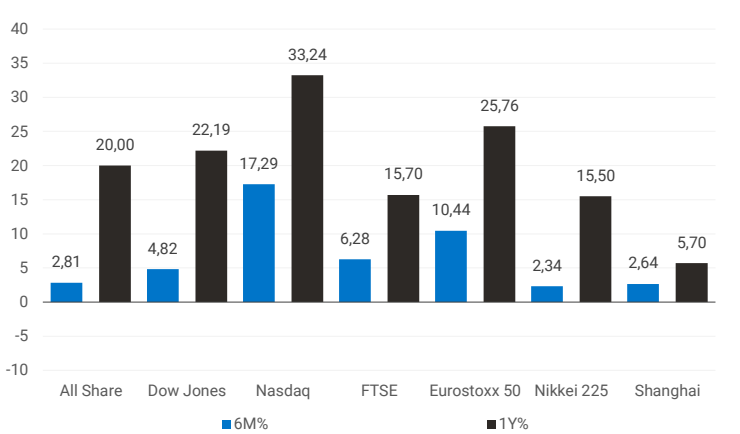
INTERNATIONAL INDICES

normalised percentage performances (in rand terms)



INTERNATIONAL INDICES

6-month & 1-year percentage performances



JSE ALL SHARE INDEX

2020 v 2021



Last date to trade 16 Nov

COMPANY	CLOSE	PREVIOUS	1D%	5D%	1M%	YTD%
Absa Group	13845	13967	-0,87	-3,75	-3,18	15,51
Anglo	59269	56016	5,81	4,98	2,81	22,20
Angloplat	174078	162347	7,23	8,16	14,75	20,62
Anglo Gold Ashanti	32943	31500	4,58	16,02	23,25	-3,82
Anheuser-Busch Inbev	91590	93200	-1,73	1,47	11,51	-11,85
Bhp Group Plc	40240	38962	3,28	3,82	0,12	3,43
Bid Corp	32188	32234	-0,14	-0,72	-2,83	22,37
British American Tobacco Plc	52793	52948	-0,29	2,04	1,55	-3,21
Compagnie Financiere	20343	20368	-0,12	4,72	24,38	55,17
Capitec	184800	185266	-0,25	2,32	10,59	28,99
Discovery	14049	14019	0,21	1,22	1,85	-8,50
Firstrand	5835	5878	-0,73	-1,49	-4,34	14,32
Goldfields	16161	15405	4,91	13,07	20,78	17,47
Glencore Plc	7503	7293	2,88	3,52	-0,20	60,22
Implats	20845	19769	5,44	-0,51	1,89	3,24
Kumba Iron Ore	42934	40423	6,21	2,68	-16,07	-31,06
Mondi Plc	38000	37531	1,25	0,95	5,19	10,75
Mtn Group	16412	16554	-0,86	11,20	14,36	172,67
Naspers -N	250670	254814	-1,63	-4,66	-2,41	-24,75
Prosus Nv	125741	127039	-1,02	-5,25	1,51	-29,06
Stanbank	13500	13399	0,75	-2,24	-2,46	6,23
Shoprite	18491	18500	-0,05	-3,69	2,59	32,08
Sanlam	6019	6065	-0,76	-5,14	-2,95	2,45
Sasol	26402	26281	0,46	-0,59	-9,36	97,13
Sibanye Stillwater	5692	5469	4,08	5,21	5,10	-5,13
Vodacom Group	14308	14086	1,58	5,87	3,08	15,03

SELECTED HEADLINES

Local stocks closed higher yesterday, with the Johannesburg Stock Exchange's Top-40 Index closing up 1.37% at 62,382 points and the broader All-Share Index finishing up 1.25% at 69,132 points. Gold and platinum firms were the biggest winners for a second day in a row. Prices of gold approached a five-month peak on Thursday. Anglo American Platinum finished 7.23% higher, followed by Anglo American Plc's local listing, up 5.8%, and Impala Platinum Holdings, up 5.4%.

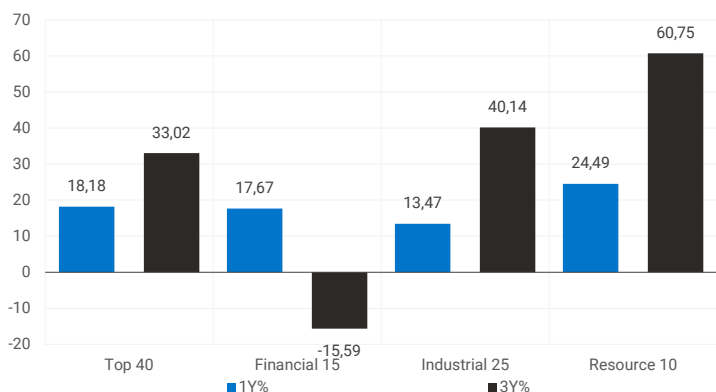
JSE TOP 40 INDEX

last 100 days



LOCAL INDICES

1-year & 3-year percentage performances



SENS ANNOUNCEMENTS

SELECTED RELEASES

Mediclinic's first-half profit more than triples

Hospital chain operator Mediclinic International said on Thursday that its profit for the first half that ended September 30 more than tripled from a year earlier, inching close to pre-pandemic levels as people returned for non-Covid treatments. But the London-based, South African owned company did not reinstate its dividend payout, which had been suspended for a year, saying it wanted to maintain its liquidity position. Mediclinic, with hospitals in Southern Africa, Europe and Middle East, reported a headline earnings per share – the main measure of corporate profit in South Africa – of 8.8 pence, against 2.4 pence reported for the same period a year ago. Hospital chains across the world saw their revenues hit in the last year and a half as successive waves of Covid-19 prompted people to postpone non-essential healthcare procedures, such as surgeries or general treatments and tests, as they wanted to avoid hospital visits. The company reported a 12% jump in revenue to 1.58 billion pounds (\$2.14 billion) for the first half when compared with the corresponding period a year earlier. Revenue was more than 4% higher than in the first half that ended September 30, 2019, before the pandemic, the hospital operator said.

Move | -0.26% Open | 6999c Close | 6902c High | 7062c Low | 6851c

TFG returns to profit, resumes dividend

South African fashion retailer TFG swung to a half-year headline profit, it said on Thursday, as it recovered from Covid-19 restrictions which forced store closures across its markets. TFG, formerly known as The Foschini Group, said it was resuming dividends after halting them last year and declared an interim payout of 170 cents per share. The clothes, homeware and jewellery retailer said headline earnings per share (HEPS), the main profit measure in South Africa, came in at 393.4 cents in the six months ended September 30, up from a loss of 83.3 cents in the same period last year. Group retail turnover grew by 51.8% to R19 billion (\$1.26 billion), supported by continued market share gains in men's and women's clothing and related products, expansion of its footprint and further growth in online retail turnover. Sales in TFG Africa, which contributes just over 69% of group retail turnover, jumped 59.5%. The Australia and London businesses saw sales growth of 39.2% and 65.6%, respectively, the owner of British womenswear brand Hobbs and Whistles said. The group estimates that retail turnover in excess of R400 million was lost as a result of the civil unrest.

Move | 0.86% Open | 13560c Close | 13200c High | 13596c Low | 13068c

EXPECTED COMPANY REPORTING SCHEDULE

COMPANY	CODE	RELEASE	DATE
Italtile	ITE	AGM	12 Nov
Richemont	CFR	Interim	12 Nov
Hulisani	HUL	Interim	15 Nov
African Rainbow Capital	AIL	AGM	15 Nov
Astral Foods	ARL	Final	15 Nov

BANK & OTHER SELECTED PREFERENCE SHARES

COMPANY	CODE	Close	CLEAN YIELD	APPROX. NXT. LDT
Nedbank	NBKP	960	7,62	13 Apr
Investec Bank	INLP	9800	8,26	08 Dec
Investec Limited	INPR	8158	8,27	08 Dec
Standard Bank	SBPP	8151	7,92	08 Sep
Firstrand Bank	FSRP	8155	7,67	16 Feb
Absa	ABSP	74600	7,95	13 Apr
Capitec	CPIP	10350	6,20	16 Mar
Grindrod	GNDP	7510	8,51	23 Mar
Netcare	NTCP	7900	8,34	03 Nov
Discovery	DSBP	8850	8,24	09 Mar
Invicta	IVTP	8500	9,96	24 Nov

LOCAL EQUITIES | JSE MID CAP COMPANIES

COMPANY	CODE	CLOSE	PREVIOUS	1D%	1M%	YTD%
Aspen	APN	22261	21595	3,08	-8,20	77,56
African Rainbow	ARI	20650	19640	5,14	0,00	-21,16
Avi	AVI	8399	8255	1,74	-1,45	14,71
Barworld	BAW	13609	13523	0,64	8,12	49,39
Bidvest Group	BVT	18235	18535	-1,62	-2,83	16,13
Capco	CCO	3495	3468	0,78	6,55	22,37
Clicks Group	CLS	28609	28000	2,17	4,60	13,23
Coronation	CML	5420	5337	1,56	7,22	25,55
Dis-Chem	DCP	3563	3476	2,50	16,82	69,59
Distell Group	DGH	18150	18197	-0,26	-2,42	90,97
Drdgold	DRD	1505	1459	3,15	17,85	-16,25
Exxaro Resources	EXX	16049	15598	2,89	-12,24	15,54
Fortress Reit A	FFA	1307	1311	-0,31	-4,74	-4,25
Fortress Reit B	FFB	282	281	0,36	11,46	-6,31
Growthpoint	GRT	1327	1346	-1,41	-6,02	5,57
Harmony Gold	HAR	6340	5855	8,28	19,22	-11,45
Investec	INL	7417	7410	0,09	17,56	102,43
Investec	INP	7265	7186	1,10	17,25	92,96
Italtile	ITE	1850	1844	0,33	20,36	25,00
Libhold	LBH	8964	8910	0,61	-2,10	44,63
Life Healthcare	LHC	2358	2358	0,00	3,42	40,19
Multichoice Group	MCG	12016	11910	0,89	3,34	-10,33
Mediclinic Int.	MEI	6902	6920	-0,26	8,69	21,22
Montauk Renewables	MKR	15711	17133	-8,30	2,69	-71,20
Mr Price Group	MRP	19919	19978	-0,30	-0,71	16,72
Momentum	MTM	1903	1923	-1,04	-11,12	20,75
Ninety One Plc	N91	5284	5231	1,01	2,62	15,85
Nedbank	NED	16602	16411	1,16	-1,70	28,22
Northam Platinum	NHM	21561	20903	3,15	-4,25	2,90
Nepi Rockcastle Plc	NRP	10296	10290	0,06	-0,04	10,12
Netcare	NTC	1620	1609	0,68	-0,31	29,60
Ninety One	NY1	5170	5097	1,43	2,99	17,50
Old Mutual	OMU	1430	1435	-0,35	-13,18	20,27
Pik N Pay	PIK	5856	5891	-0,59	0,00	16,51
Pepkor	PPH	2561	2544	0,67	14,08	87,89
Psg	PSG	7941	8043	-1,27	-1,35	32,62
Quilter Plc	QLT	3185	3210	-0,78	10,09	3,61
Rbplapts	RBP	13168	12625	4,30	46,72	101,41
Redefine	RDF	517	522	-0,96	11,66	55,26
Remgro	REM	13636	13533	0,76	0,29	41,75
Resilient Reit	RES	5730	5738	-0,14	2,50	35,46
Rand Merchant Inv	RMI	4241	4263	-0,52	10,90	32,32
Reinet Investments Sca	RNI	27753	27341	1,51	-1,90	0,70
Sappi	SAP	4079	4338	-5,97	-4,23	24,28
Santam	SNT	25475	25202	1,08	0,90	-0,01
Spar	SPP	19531	19561	-0,15	2,48	3,04
Sirius Real Estate	SRE	2868	2872	-0,14	12,60	48,60
Tigebrands	TBS	19581	19272	1,60	5,27	-5,94
The Foschini Group	TFG	13200	13088	0,86	1,93	29,02
Thungela Resources	TGA	6723	6478	3,78	-25,08	1231,29
Telkom	TKG	5000	4814	3,86	8,37	62,81
Truworths	TRU	5379	5339	0,75	-0,39	45,97
Textainer	TXT	58720	60738	-3,32	8,24	106,04
Woolies	WHL	5707	5691	0,28	-0,51	44,33

LOCAL EQUITIES | JSE SMALL CAP COMPANIES

COMPANY	CODE	CLOSE	PREVIOUS	1D%	1M%	YTD%
Advtech	ADH	1938	1901	1,95	25,44	104,00
Altron	AEL	1032	1075	-4,00	-16,10	-5,41
Aeci	AFE	11347	11331	0,14	3,13	30,43
Alexander Forbes	AFH	432	440	-1,82	-3,36	9,09
Afrimat	AFT	4973	5000	-0,54	-4,37	15,60
Arrowhead Prop.	AHB	409	415	-1,45	0,99	76,29
African Rainbow Cap.	AIL	505	503	0,40	17,44	13,23
Adcock Ingram	AIP	4822	4939	-2,37	3,03	4,83
Astral	ARL	17328	17692	-2,06	-5,31	24,22
Attacq	ATT	700	695	0,72	0,14	40,85
Brait	BAT	468	471	-0,64	6,36	25,47
Blue Label Telecoms	BLU	511	509	0,39	-9,24	32,38
Bytes Technology	BYI	11369	11343	0,23	25,96	70,45
City Lodge Hotels	CLH	545	535	1,87	11,22	118,00
Curro	COH	1225	1296	-5,48	3,99	29,22
Cashbuild	CSB	25150	24315	3,43	-4,55	6,12
Datatec	DTC	4123	4183	-1,43	14,53	67,94
Emira	EMI	960	929	3,34	5,73	44,14
Epp N.V	EPP	1313	1320	-0,53	12,22	26,86
Equites Property Fund	EQU	2157	2157	0,00	0,70	24,18
Famous Brands	FBR	7400	7420	-0,27	29,76	51,17
Grindrod	GND	514	520	-1,15	5,54	1,78
Hci	HCI	7980	8329	-4,19	7,33	45,09
Hudaco	HDC	14000	14126	-0,89	7,69	72,84
Hammerson Plc	HMN	650	676	-3,85	-1,52	25,00
Hyprop	HYP	3318	3330	-0,36	-0,06	12,40
Investec Australia Prop.	IAP	1795	1790	0,28	8,72	30,55
Investec Prop Fund	IPF	1172	1140	2,81	12,37	28,65
Imperial	IPL	6225	6265	-0,64	-1,00	66,67
Jse	JSE	10988	11190	-1,81	-0,15	-2,33
Kap Industrial	KAP	440	439	0,23	-2,87	39,24
Karoo	KRO	52511	54115	-2,96	14,90	---
Psg Konsult	KST	1255	1290	-2,71	9,80	39,44
Liberty Two Degrees	L2D	447	441	1,36	1,59	5,18
Long4Life	L4L	529	543	-2,58	19,68	60,79
Libstar	LBR	655	682	-3,96	3,80	3,48
Lighthouse Capital	LTE	842	830	1,45	1,94	23,28
Massmart	MSM	7225	7219	0,08	16,18	71,94
Mas Real Estate Inc	MSP	1976	1980	-0,20	10,08	54,98
Metair	MTA	3000	3030	-0,99	-0,23	60,00
Motus	MTH	10356	9910	4,50	1,36	84,93
M&R Hold	MUR	1450	1387	4,54	5,53	81,93
Oceana	OCE	6149	6380	-3,62	-4,30	-4,30
Omnia	OMN	6235	6181	0,87	-2,27	35,28
Pan African Resource	PAN	396	389	1,80	20,00	-17,50
Raubex	RBX	3876	3700	4,76	17,45	80,28
Rhodes Food Pty	RFG	1191	1241	-4,03	-1,57	-1,41
Reunert	RLO	5268	5492	-4,08	8,62	45,52
Sa Corp Real Estate	SAC	216	213	1,41	-0,92	24,86
Steinhoff International N.V.	SNH	217	217	0,00	-20,22	108,65
Super	SPG	3257	3240	0,52	-8,41	39,13
Stor-Age Property Reit	SSS	1427	1431	-0,28	2,88	5,31
Stenprop	STP	3925	3851	1,92	6,66	42,88
Sun Int	SUI	3115	3177	-1,95	23,86	151,62
Transaction Capital	TCP	4654	4532	2,69	10,57	86,98
Tsogo Sun Hotels	TGO	350	361	-3,05	0,00	139,73
Tsogo Sun Gaming	TSG	1225	1259	-2,70	13,11	140,20
Vukile	VKE	1239	1237	0,16	4,47	54,88
Wbhovco	WBO	12200	11910	2,43	7,10	33,86
Zeder Investments	ZED	315	316	-0,32	-0,94	20,69

SOUTH AFRICAN 10-YEAR BOND

2021 v 2020



10-YEAR BOND YIELDS | SELECTED ITEMS (BASIS POINT CHANGE)

REGION	YIELD	1D%	1M%	YTD%
United States	1,56	1	-5	59
United Kingdom	0,92	---	-27	51
Germany	-0,24	2	-11	28
Japan	0,07	1	-1	4
South African 10Y	9,24	-16	-31	39

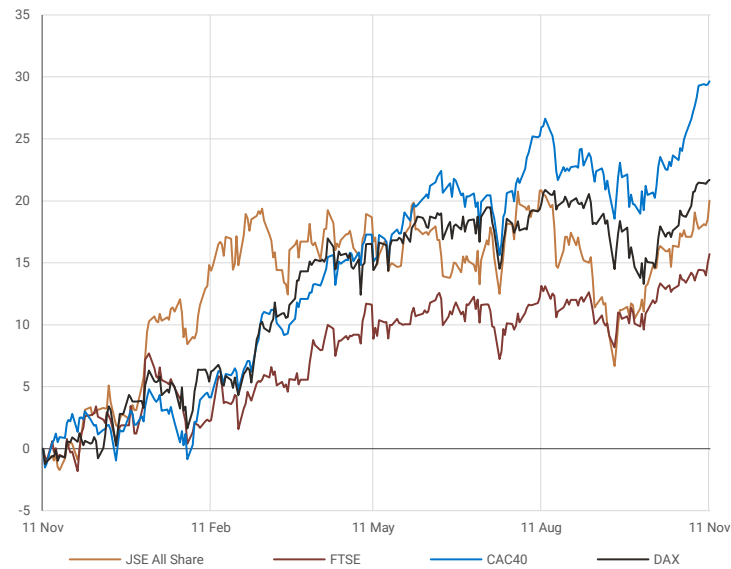
GLOBAL INTEREST RATES | SELECTED ITEMS

REGION	CURRENT RATE
United States	0,00%-0,25%
United Kingdom	0,10%
European	0,00%
SA Repo Rate	3,50%
SA Prime Rate	7,00%

## GLOBAL MARKETS

### EUROPEAN INDICES

normalised percentage performances



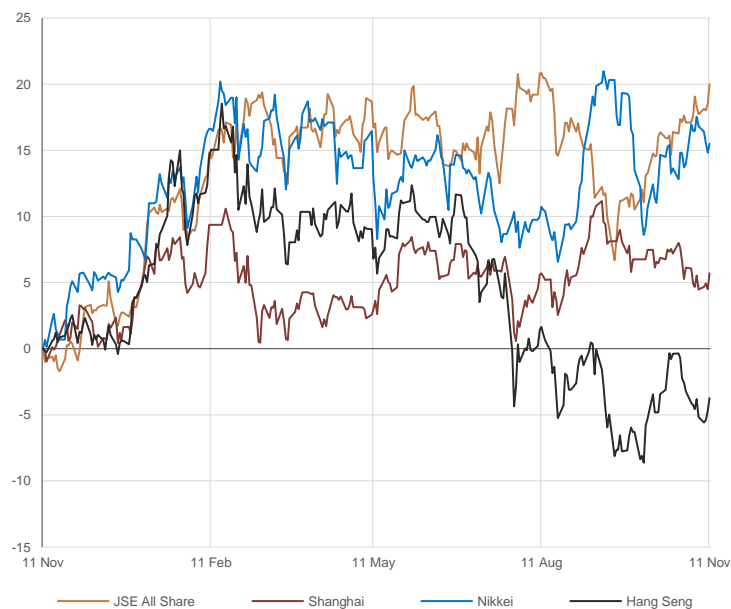
### AMERICAN INDICES

normalised percentage performances



### ASIAN INDICES

normalised percentage performances



## EUROPEAN MARKET COMMENTARY

### SELECTED HEADLINES

European stocks closed higher on Thursday as global market players digested the latest U.S. inflation data, which showed persistent price rises. The pan-European Stoxx 600 closed up by 0.3% provisionally, boosted by a 3.7% surge in mining shares. At the opposite end, Europe's basket of travel and leisure stocks dipped around 1.1%. Siemens beat sales and profit expectations for the quarter and projected further profitable growth as it expects supply chain bottlenecks to ease in 2022. Shares of the German industry group climbed 2.8%.

EUROPEAN INDICES	CLOSE	PREVIOUS	1D%	5D%	1M%	YTD%
CAC 40	7059,6	7046,2	0,19	1,03	7,44	27,17
DAX 30	16083,1	16067,8	0,10	0,33	5,82	17,23
Eurostoxx 50	4358,0	4348,8	0,21	0,57	7,01	22,67
FTSE	7384,2	7340,2	0,60	1,43	3,32	14,30



## AMERICAN MARKET COMMENTARY

### SELECTED HEADLINES

The Nasdaq Composite rebounded Thursday after hot inflation data and surging bond yields sparked a sell-off in technology stocks in the previous session. Shares of commodity producers in the S&P 500 gained as investors bet on sustained inflation. On the downside, Disney shares fell after the media giant missed on the top and bottom lines of its quarterly results. Disney+ subscribers also came in short of estimates. The bond market was closed Thursday for Veterans Day.

AMERICAN INDICES	CLOSE	PREVIOUS	1D%	5D%	1M%	YTD%
Dow Jones	35921,2	36079,9	-0,44	-0,56	4,13	17,36
Nasdaq	15704,3	15622,7	0,52	-1,48	8,41	21,85
S&P 500	4649,3	4646,7	0,06	-0,66	6,61	23,78



## ASIAN MARKET COMMENTARY

### SELECTED HEADLINES

Shares in Asia-Pacific mostly rose this morning following overnight gains for tech stocks stateside as the Nasdaq Composite rebounded. Meanwhile, Hong Kong-listed shares of Chinese chipmaker Semiconductor Manufacturing International Corporation dropped nearly 4% after the firm said a top executive and multiple board members resigned. The Hang Seng Tech index gained more than 1%.

ASIAN INDICES	CLOSE	PREVIOUS	1D%	5D%	1M%	YTD%
Hang Seng	25248,0	24996,1	1,01	0,09	-0,30	-7,28
Nikkei 225	29277,9	29106,8	0,59	-1,73	2,74	6,68
Shanghai	3532,8	3492,5	1,15	0,17	-1,64	1,72



## COMMODITIES

### BRENT CRUDE (\$)



### PLATINUM (\$)



## COMMODITY MARKET COMMENTARY

### SELECTED HEADLINES

Gold was flat this morning but was set for its biggest weekly jump in six months, as high U.S. consumer prices drove interest in the metal as an inflation hedge. Meanwhile, oil prices drifted lower today, wiping out gains from the previous session, as the dollar continued to rise on bets the U.S. central bank will bring forward plans to raise rates to tame inflation. There are positive signs on the demand side, with air travel rapidly picking up, but tighter monetary and fiscal policy and the oncoming northern hemisphere winter will act as a dampener.

COMMODITY	LAST	CLOSE	% CHG	1D%	1M%	YTD%
Brent Crude (\$)	82,3	82,6	-0,34	0,02	-1,28	70,14
Gold (\$)	1856,7	1862,0	-0,28	0,70	6,15	-1,90
Palladium	2053,3	2066,3	-0,63	1,99	-2,43	-15,80
Platinum (\$)	1085,1	1088,3	-0,29	1,59	7,56	1,52
Silver	25,1	25,3	-0,46	2,53	11,91	-4,31

### GOLD (\$)



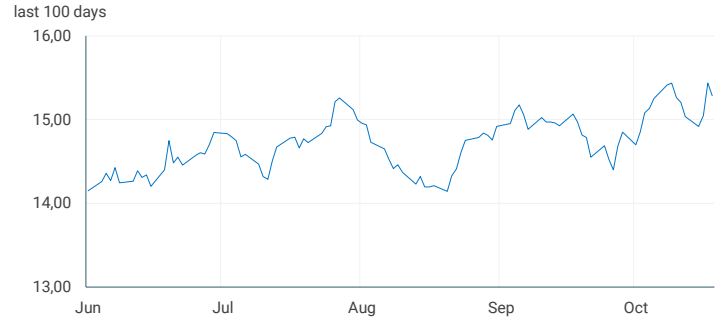
## CURRENCIES

COMMODITY	LAST	CLOSE	% CHG	1D%	1M%	YTD%
USDZAR	15,3	15,3	0,09	-0,96	1,46	4,03
GBPZAR	20,4	20,5	-0,15	-1,05	-0,02	1,93
EURZAR	17,5	17,5	-0,17	-1,05	0,74	-2,32
AUDZAR	11,1	11,2	-0,18	-1,26	0,90	-1,21
EURUSD	1,1	1,1	-0,06	-0,26	-0,92	-6,29
USDJPY	114,3	114,1	0,19	0,13	0,65	10,44
GBPUSD	1,3	1,3	-0,09	-0,23	-1,64	-2,14
USDCHF	0,9	0,9	0,14	0,31	-0,70	4,03
AUDCAD	0,9	0,9	0,02	0,22	0,04	-6,31

### SELECTED HEADLINES

The rand firmed and local bond yields edged lower on Thursday after the government pledged to cut the budget deficit and curb debt in its mid-term budget. At the close of the session, the rand was trading around R15.29 versus the dollar, 0.95% firmer. Despite a tax revenue windfall and growing calls ahead of the mid-term budget for the introduction of a new basic income grant (BIG) for unemployed workers, Finance Minister Enoch Godongwana did not give the idea much airtime in his debut Medium-Term Budget Policy Statement (MTBPS) speech on Thursday.

### USDZAR



### CURRENCY PAIRS

normalised percentage performances



### EURUSD

