

GLOBAL OVERVIEW | SELECTED INDICES

SOUTH AFRICAN INDICES	CLOSE	PREVIOUS	1D%	5D%	1M%	YTD%
All Share	70090,5	69921,4	0,24	3,00	4,57	17,98
Top 40	63480,8	63263,4	0,34	3,53	4,94	16,74
Financial 15	14078,0	13958,8	0,85	-0,46	0,84	16,73
Industrial 25	94091,0	92953,3	1,22	5,03	10,93	20,78
Resource 10	63925,7	64694,2	-1,19	3,08	-0,65	11,03
Mid Cap	78508,4	78329,1	0,23	-0,01	0,72	22,19
Small Cap	64509,4	64905,8	-0,61	-1,19	0,08	45,11
Banks	8180,3	8097,3	1,02	-0,90	0,23	19,44
General Retailers	7736,4	7967,8	-2,90	-2,82	5,17	66,35
Property (J253) - TR	1594,4	1591,5	0,18	0,07	4,61	29,67

AMERICAN INDICES	CLOSE	PREVIOUS	1D%	5D%	1M%	YTD%
Dow Jones	36087,5	36100,3	-0,04	-0,95	2,25	17,91
Nasdaq	15853,8	15861,0	-0,04	-0,80	6,42	23,01
S&P 500	4682,8	4682,9	0,00	-0,40	4,73	24,67
Dollar Index	95,4	95,1	0,31	1,46	1,53	6,11
US VIX	16,5	16,3	1,23	-4,24	1,17	-27,52

EUROPEAN INDICES	CLOSE	PREVIOUS	1D%	5D%	1M%	YTD%
CAC 40	7128,6	7091,4	0,53	1,15	5,96	28,41
DAX 30	16148,6	16094,1	0,34	0,64	3,60	17,71
Eurostoxx 50	4386,2	4370,3	0,36	0,77	4,86	23,46
FTSE	7351,9	7347,9	0,05	0,70	1,63	13,80

ASIAN INDICES	CLOSE	PREVIOUS	1D%	5D%	1M%	YTD%
Hang Seng	25390,9	25328,0	0,25	2,53	0,24	-6,76
Nikkei 225	29776,8	29610,0	0,56	0,91	2,44	8,50
Shanghai	3533,3	3539,1	-0,16	0,99	-1,09	1,73

EARLY MORNING	LAST	CLOSE	% CHG	1D%	5D%	YTD%
Tencent	500,0	491,8	1,67	1,36	6,04	-13,11
BHP Billiton	3644,0	3746,0	-2,72	-0,64	2,97	-11,71

INTERNATIONAL ECONOMIC CALENDAR | SELECTED EVENTS

TIME	AREA	TODAY'S EVENTS & RELEASES	PERIOD	EXP.	PREV.
9:00	GBP	Unemployment Rate	Sep	4.4%	4.5%
12:00	EUR	Flash Employment Change q/q	Sep	0.6%	0.7%
12:00	EUR	Flash GDP q/q	Sep	2.2%	2.2%
15:30	USD	Core Retail Sales m/m	Oct	1.0%	0.8%
15:30	USD	Retail Sales m/m	Oct	1.3%	0.7%

TIME	AREA	PREVIOUS SESSION'S RELEASES	PERIOD	EXP.	ACT.
12:00	EUR	Trade Balance	Sep	12.5B	6.1B
15:30	USD	Empire State Manufacturing Index	Nov	22.1	30.9
---	---	---	---	---	---
---	---	---	---	---	---
---	---	---	---	---	---

LOCAL EQUITIES | JSE ALL SHARE COMPANIES

BEST ONE-DAY % PERFORMERS	CODE	CLOSE	1D%	5D%	YTD%
Shoprite	SHP	19780	6,92	5,55	41,29
Fortress REIT B	FFB	296	3,50	9,23	-1,66
Grindrod	GND	531	3,11	4,12	5,15
Compagnie Fin Richemont	CFR	23034	2,86	13,64	75,70
Brait SE	BAT	479	2,79	3,46	28,42
Northam Platinum	NHM	22120	2,41	-9,08	5,57
Absa	ABG	13866	2,33	-1,65	15,68

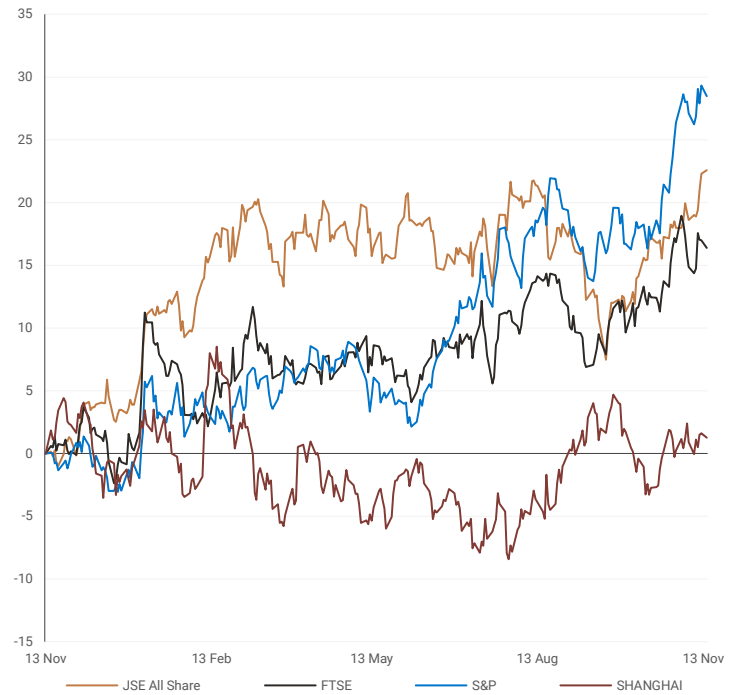
WORST ONE-DAY % PERFORMERS	CODE	CLOSE	1D%	5D%	YTD%
Distell	DGH	17000	-6,90	-6,62	78,87
Tsogo Sun Gaming	TSG	1087	-6,05	-12,34	113,14
Textainer	TXT	57072	-4,60	-4,74	100,26
Sun International	SUI	2897	-3,85	-7,68	134,01
Curro	COH	1250	-3,85	0,81	31,86
Investec Property Fund	IPF	1135	-3,40	1,34	24,59
ADvTECH	ADH	1821	-2,62	-3,85	91,68

DIVIDEND DATA | SELECTED JSE ALL SHARE COMPANIES

COMPANY	CODE	DIVIDEND	COMPANY	CODE	DIVIDEND
Spear REIT	SEA	33.06 ZARc	Sappi	SAPCB	26466 ZARc
MiX Telematics	MIX	4 ZARc	Bytes Technology	BYI	2GBPP
Nvest	NVE	5.75 ZARc	Irongate	IAP	4.53 AUD
Octodec	OCT	50 ZARc			
Remgro	REM	60 ZARc			

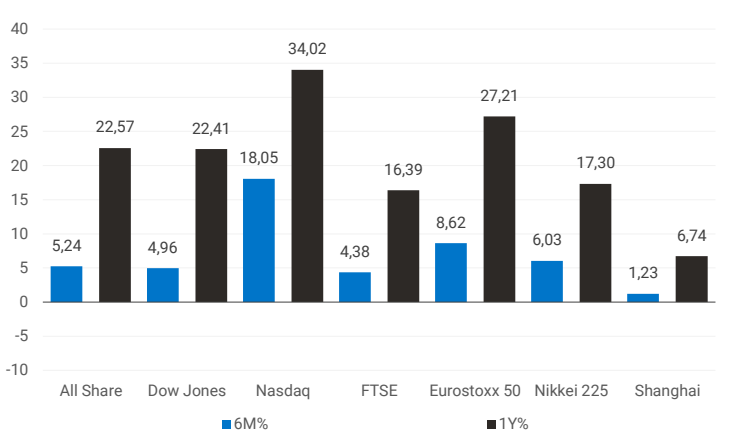
INTERNATIONAL INDICES

normalised percentage performances (in rand terms)



INTERNATIONAL INDICES

6-month & 1-year percentage performances



JSE ALL SHARE INDEX

2020 v 2021



Last date to trade 16 Nov

COMPANY	CLOSE	PREVIOUS	1D%	5D%	1M%	YTD%
Absa Group	13866	13550	2,33	-1,65	-2,82	15,68
Anglo	58119	59510	-2,34	4,06	-1,43	19,83
Angloplat	164810	162832	1,21	5,68	1,34	14,20
Anglo Gold Ashanti	31855	32200	-1,07	11,76	15,58	-7,00
Anheuser-Busch Inbev	91431	91799	-0,40	0,69	11,78	-12,00
Bhp Group Plc	39480	40400	-2,28	1,19	-1,95	1,48
Bid Corp	31892	31907	-0,05	-1,31	-1,95	21,25
British American Tobacco Plc	53600	53758	-0,29	3,97	2,51	-1,73
Compagnie Financiere	23034	22393	2,86	13,64	31,77	75,70
Capitec	184370	183128	0,68	0,47	9,69	28,69
Discovery	14130	14150	-0,14	1,46	4,46	-7,97
Firstrand	5818	5734	1,46	-0,36	-1,91	13,99
Goldfields	16215	16183	0,20	14,57	18,15	17,87
Glencore Plc	7376	7525	-1,98	1,82	-5,71	57,51
Implats	20782	20329	2,23	4,96	-6,15	2,93
Kumba Iron Ore	41194	42110	-2,18	0,30	-20,24	-33,86
Mondi Plc	37800	38278	-1,25	1,51	5,06	10,17
Mtn Group	15964	16000	-0,23	-5,82	14,09	165,23
Naspers -N	265000	262283	1,04	5,16	3,11	-20,45
Prosus Nv	131204	130937	0,20	4,23	4,70	-25,98
Stanbank	13321	13235	0,65	-1,33	-2,41	4,82
Shoprite	19780	18500	6,92	5,55	8,30	41,29
Sanlam	6002	5967	0,59	-3,19	-0,55	2,16
Sasol	26120	25684	1,70	-4,58	-5,13	95,03
Sibanye Stillwater	5447	5461	-0,26	4,15	-3,42	-9,22
Vodacom Group	13832	14011	-1,28	1,44	-0,40	11,20

SELECTED HEADLINES

Local stocks rose yesterday, with the Johannesburg Stock Exchange's Top-40 Index rising 0.34% to 63,481 points and the broader All-Share Index up 0.24% to 70,091 points. Shares in drinks maker Distell fell 7% after investors were left disappointed by the price of a takeover offer by Heineken. Local investors will be waiting for domestic inflation data, due alongside retail sales data on Wednesday, and the central bank's monetary policy meeting. The South African Reserve Bank (SARB) starts its three-day monetary policy committee meeting today, with the decision on interest rates due on Thursday.

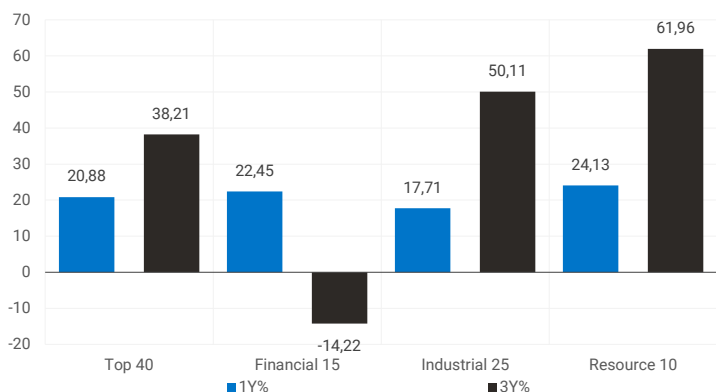
JSE TOP 40 INDEX

last 100 days



LOCAL INDICES

1-year & 3-year percentage performances



EXPECTED COMPANY REPORTING SCHEDULE

COMPANY	CODE	RELEASE	DATE
Growthpoint	GRT	AGM	16 Nov
Tradehold	TDH	Interim	16 Nov
Resilient	RES	Interim	16 Nov
Transaction Capital	TCP	Final	16 Nov
Reinet	RNI	Interim	16 Nov

BANK & OTHER SELECTED PREFERENCE SHARES

COMPANY	CODE	Close	CLEAN YIELD	APPROX. NXT. LDT
Nedbank	NBKP	960	7,62	13 Apr
Investec Bank	INLP	9725	8,27	08 Dec
Investec Limited	INPR	8250	8,27	08 Dec
Standard Bank	SBPP	8349	7,93	08 Sep
Firstrand Bank	FSRP	8199	7,68	16 Feb
Absa	ABSP	74100	7,96	13 Apr
Capitec	CPIP	10350	6,20	16 Mar
Grindrod	GNDP	7525	8,52	23 Mar
Netcare	NTCP	7899	8,35	03 Nov
Discovery	DSBP	8959	8,24	09 Mar
Invicta	IVTP	8510	9,97	24 Nov

SENS ANNOUNCEMENTS

SELECTED RELEASES

Shoprite's quarterly sales rises over 9%

South Africa's largest grocery retailer Shoprite on Monday reported a 9.3% rise in its first quarter sales, helped by robust trading in its supermarkets in South Africa. Shoprite, which has more than 2 800 stores in 13 African countries, also said its supermarkets division in South Africa was on track to open the planned 131 new stores in the current financial year, which began on July 1. That division, the group's core business, increased sales by 11.6% despite civil unrest in July, during which 135 supermarkets and 54 liquor shops were severely impacted due to looting and arson attacks. Shoprite estimates the book value of the damage to property, fixtures and fittings, stock and fleet at around R1.25 billion (\$81.74 million). Shoprite has cover in place from the South African Special Risks Insurance Association to the value of R1.5 billion and has to date received an initial R500 million payment, it said. Its supermarkets in the rest of Africa, notably Zambia, increased sales by 1.9%. The furniture unit's sales declined by 10.5% during the quarter, in part a result of the high sales growth base created over this period last year when sales increased by 20.6% as shoppers reinvested in their homes.

Move | 6.92% Open | 19180c Close | 19780c High | 19908c Low | 19120c

Vodacom adds 6.2m customers across the group

Vodacom Group – the JSE-listed telecommunications (telco) giant that is looking to transform into a tech company – revealed in its latest results published on Monday that it added 6.2 million customers during the half-year ending September 30, 2021. This is for the group's entire operations across Africa, including Safaricom on a 100% basis. The increase takes Vodacom's combined customer base to 129.9 million and within striking distance of the 130-million milestone, which is likely to be surpassed during the current financial year. South Africa's largest mobile network operator also noted in the results that it had secured an additional 1.1 million data customers in the country (part of the overall 6.2 million growth in its customer-based). Normalised growth presents performance on a comparable basis. This excludes tax related adjustment where applicable and adjusting for trading foreign exchange, foreign currency fluctuation on a constant currency basis (using the current year as base) to show a like-for-like comparison of results. "Normalised group service revenue and group operating profit growth of 5.4% and 5.7% respectively, is in line with our medium-term targets," Vodacom said in its results statement. "Net profit from associate and joint ventures declined 36.1% [+11.9% on a normalised basis] to R1.6 billion, negatively impacted by an R805 million one-off deferred tax rate adjustment in the prior period and foreign exchange translation headwinds," the group added. "The adjustment related to the decrease of the corporate tax rate in Kenya, which fell from 30% to 25%. At a net income level, and after the impact of non-controlling interests, the adjustment was R705 million," Vodacom pointed out in a footnote. The group declared an interim dividend of 420 cents per share, which was up 1.2% on the corresponding half-year.

Move | -1.28% Open | 13925c Close | 13832c High | 14059c Low | 13669c

LOCAL EQUITIES | JSE MID CAP COMPANIES

COMPANY	CODE	CLOSE	PREVIOUS	1D%	1M%	YTD%
Aspen	APN	21700	21653	0,22	-12,51	73,09
African Rainbow	ARI	20605	20743	-0,67	-4,80	-21,33
Avi	AVI	8303	8341	-0,46	0,35	13,40
Barworld	BAW	13437	13250	1,41	6,64	47,50
Bidvest Group	BVT	18522	18142	2,09	-2,00	17,96
Capco	CCO	3442	3497	-1,57	6,37	20,52
Clicks Group	CLS	28128	27940	0,67	0,10	11,32
Coronation	CML	5468	5430	0,70	8,56	26,66
Dis-Chem	DCP	3476	3445	0,90	11,45	65,45
Distell Group	DGH	17000	18259	-6,90	-7,68	78,87
Drdgold	DRD	1524	1525	-0,07	12,64	-15,19
Exxaro Resources	EXX	15530	15740	-1,33	-12,27	11,81
Fortress Reit A	FFA	1321	1306	1,15	-1,78	-3,22
Fortress Reit B	FFB	296	286	3,50	20,82	-1,66
Growthpoint	GRT	1356	1343	0,97	-2,31	7,88
Harmony Gold	HAR	6277	6292	-0,24	10,57	-12,33
Investec	INL	7375	7385	-0,14	9,83	101,28
Investec	INP	7249	7197	0,72	8,40	92,54
Italtile	ITE	1810	1849	-2,11	10,10	22,30
Libhold	LBH	8895	8894	0,01	-1,92	43,51
Life Healthcare	LHC	2356	2310	1,99	1,33	40,07
Multichoice Group	MCG	12402	12236	1,36	2,68	-7,45
Mediclinic Int.	MEI	6825	6824	0,01	-2,28	19,86
Montauk Renewables	MKR	16600	16899	-1,77	0,91	-69,57
Mr Price Group	MRP	19865	19690	0,89	-3,91	16,41
Momentum	MTM	1929	1907	1,15	-7,26	22,40
Ninety One Plc	N91	5205	5224	-0,36	0,48	14,12
Nedbank	NED	16243	16300	-0,35	-7,11	25,45
Northam Platinum	NHM	22120	21600	2,41	-2,56	5,57
Nepi Rockcastle Plc	NRP	10200	10210	-0,10	0,58	9,09
Netcare	NTC	1620	1599	1,31	-1,82	29,60
Ninety One	NY1	5063	5097	-0,67	0,56	15,07
Old Mutual	OMU	1420	1416	0,28	-9,55	19,43
Pik N Pay	PIK	5842	5823	0,33	0,22	16,24
Pepkor	PPH	2540	2540	0,00	10,20	86,35
Psg	PSG	8010	8036	-0,32	3,56	33,77
Quilter Plc	QLT	3148	3149	-0,03	8,07	2,41
Rbplapts	RBP	13078	13072	0,05	37,23	100,03
Redefine	RDF	528	525	0,57	17,86	58,56
Remgro	REM	13811	13582	1,69	-0,02	43,57
Resilient Reit	RES	5670	5701	-0,54	-0,86	34,04
Rand Merchant Inv	RMI	4233	4250	-0,40	12,25	32,07
Reinet Investments Sca	RNI	28200	27786	1,49	-1,57	2,32
Sappi	SAP	4095	4200	-2,50	-5,01	24,77
Santam	SNT	25336	25092	0,97	1,19	-0,56
Spar	SPP	19600	19500	0,51	2,04	3,41
Sirius Real Estate	SRE	2921	2900	0,72	10,81	51,35
Tigebrands	TBS	19656	19397	1,34	5,45	-5,58
The Foschini Group	TFG	12665	12950	-2,20	-2,56	23,79
Thungela Resources	TGA	6060	6292	-3,69	-27,94	1100,00
Telkom	TKG	4826	4881	-1,13	1,60	57,15
Truworths	TRU	5304	5289	0,28	-4,07	43,93
Textainer	TXT	57072	59825	-4,60	1,95	100,26
Woolies	WHL	5713	5679	0,60	1,12	44,49

LOCAL EQUITIES | JSE SMALL CAP COMPANIES

COMPANY	CODE	CLOSE	PREVIOUS	1D%	1M%	YTD%
Advtech	ADH	1821	1870	-2,62	5,87	91,68
Altron	AEL	1020	1021	-0,10	-8,93	-6,51
Aeci	AFE	11146	11231	-0,76	1,61	28,11
Alexander Forbes	AFH	412	419	-1,67	-1,90	4,04
Afrimat	AFT	5096	5155	-1,14	-5,63	18,46
Arrowhead Prop.	AHB	410	411	-0,24	0,99	76,72
African Rainbow Cap.	AIL	503	511	-1,57	-4,19	12,78
Adcock Ingram	AIP	4836	4919	-1,69	1,34	5,13
Astral	ARL	16896	16900	-0,02	-9,59	21,12
Attacq	ATT	673	685	-1,75	0,00	35,41
Brait	BAT	479	466	2,79	15,98	28,42
Blue Label Telecoms	BLU	517	522	-0,96	-7,68	33,94
Bytes Technology	BYI	11400	11337	0,56	8,91	70,91
City Lodge Hotels	CLH	539	545	-1,10	1,89	115,60
Curro	COH	1250	1300	-3,85	2,88	31,86
Cashbuild	CSB	24702	24775	-0,29	-10,25	4,23
Datatec	DTC	4192	4202	-0,24	9,17	70,75
Emira	EMI	921	932	-1,18	-4,46	38,29
Epp N.V	EPP	1314	1301	1,00	10,89	26,96
Equites Property Fund	EQU	2130	2107	1,09	1,00	22,63
Famous Brands	FBR	7317	7305	0,16	6,97	49,48
Grindrod	GND	531	515	3,11	-0,93	5,15
Hci	HCI	7924	8049	-1,55	-5,95	44,07
Hudaco	HDC	13545	13880	-2,41	3,37	67,22
Hammerson Plc	HMN	648	661	-1,97	-3,14	24,62
Hyprop	HYP	3327	3319	0,24	-1,07	12,70
Investec Australia Prop.	IAP	1775	1790	-0,84	10,25	29,09
Investec Prop Fund	IPF	1135	1175	-3,40	6,57	24,59
Imperial	IPL	6191	6172	0,31	-0,80	65,76
Jse	JSE	10798	10926	-1,17	-1,01	-4,02
Kap Industrial	KAP	435	431	0,93	-8,42	37,66
Karoo	KRO	54500	54499	0,00	13,54	---
Psg Konsult	KST	1255	1260	-0,40	2,87	39,44
Liberty Two Degrees	L2D	440	447	-1,57	3,04	3,53
Long4Life	L4L	530	523	1,34	3,72	61,09
Libstar	LBR	670	670	0,00	6,35	5,85
Lighthouse Capital	LTE	820	830	-1,20	0,61	20,06
Massmart	MSM	7099	7113	-0,20	15,49	68,94
Mas Real Estate Inc	MSP	1965	1974	-0,46	11,27	54,12
Metair	MTA	2897	2970	-2,46	-5,33	54,51
Motus	MTH	10485	10552	-0,63	1,84	87,23
M&R Hold	MUR	1445	1456	-0,76	6,64	81,30
Oceana	OCE	6211	6199	0,19	-0,42	-3,33
Omnia	OMN	6100	6040	0,99	-7,10	32,35
Pan African Resource	PAN	400	399	0,25	15,61	-16,67
Raubex	RBX	3798	3800	-0,05	13,75	76,65
Rhodes Food Pty	RFG	1254	1246	0,64	4,59	3,81
Reunert	RLO	5191	5202	-0,21	3,00	43,40
Sa Corp Real Estate	SAC	212	214	-0,93	-3,64	22,54
Steinhoff International N.V.	SNH	217	216	0,46	-6,47	108,65
Super	SPG	3236	3280	-1,34	-10,29	38,23
Stor-Age Property Reit	SSS	1395	1375	1,45	0,72	2,95
Stenprop	STP	3824	3900	-1,95	4,51	39,21
Sun Int	SUI	2897	3013	-3,85	1,97	134,01
Transaction Capital	TCP	4521	4596	-1,63	6,13	81,64
Tsogo Sun Hotels	TGO	351	351	0,00	-4,62	140,41
Tsogo Sun Gaming	TSG	1087	1157	-6,05	-1,18	113,14
Vukile	VKE	1259	1263	-0,32	6,79	57,38
Wbhovco	WBO	12000	12000	0,00	5,59	31,67
Zeder Investments	ZED	324	322	0,62	0,62	24,14

SOUTH AFRICAN 10-YEAR BOND

2021 v 2020



10-YEAR BOND YIELDS | SELECTED ITEMS (BASIS POINT CHANGE)

REGION	YIELD	1D%	1M%	YTD%
United States	1,6	4	3	70
United Kingdom	0,96	5	-14	63
Germany	-0,23	3	-6	32
Japan	0,07	---	---	5
South African 10Y	9,43	3	-5	61

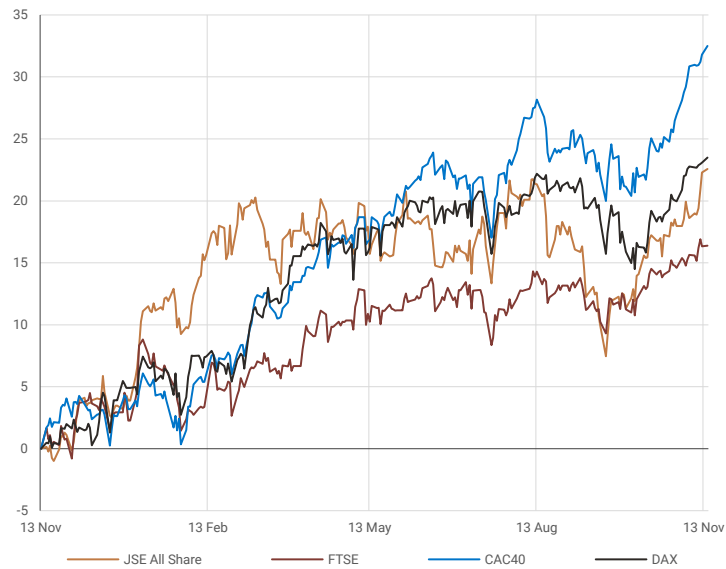
GLOBAL INTEREST RATES | SELECTED ITEMS

REGION	CURRENT RATE
United States	0,00%-0,25%
United Kingdom	0,10%
European	0,00%
SA Repo Rate	3,50%
SA Prime Rate	7,00%

## GLOBAL MARKETS

### EUROPEAN INDICES

normalised percentage performances



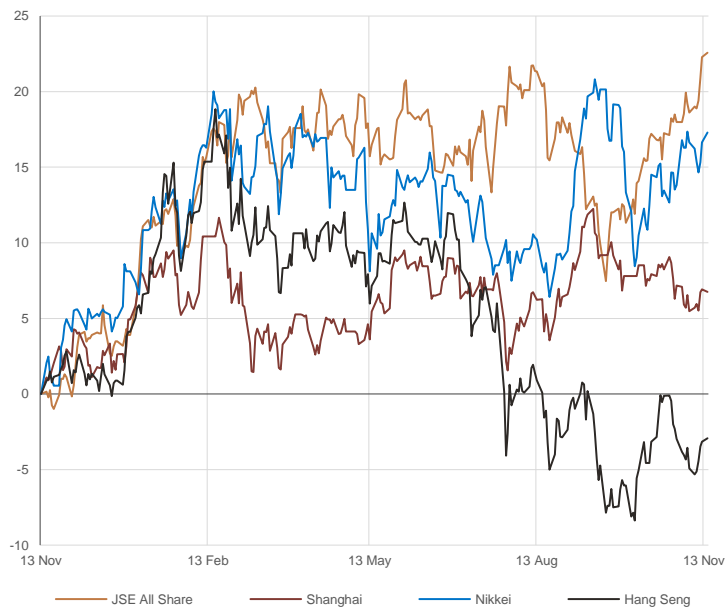
### AMERICAN INDICES

normalised percentage performances



### ASIAN INDICES

normalised percentage performances



## EUROPEAN MARKET COMMENTARY

### SELECTED HEADLINES

European markets closed slightly higher on Monday as investors monitored the steady drip of economic data and corporate earnings from around the world. The pan-European Stoxx 600 provisionally closed up by around 0.3%, with retail and utilities stocks climbing 0.8% while the basic resources sector sank 1.2%. In terms of individual share price movement in Europe, Philips dropped 10.5% after the Dutch medical equipment maker said on Sunday that it is speaking to U.S. regulators following a recent inspection at one of its facilities.

EUROPEAN INDICES	CLOSE	PREVIOUS	1D%	5D%	1M%	YTD%
CAC 40	7128,6	7091,4	0,53	1,15	5,96	28,41
DAX 30	16148,6	16094,1	0,34	0,64	3,60	17,71
Eurostoxx 50	4386,2	4370,3	0,36	0,77	4,86	23,46
FTSE	7351,9	7347,9	0,05	0,70	1,63	13,80



## AMERICAN MARKET COMMENTARY

### SELECTED HEADLINES

U.S. equities were flat on Monday, as U.S. Treasury yields reversed and climbed higher, and investors awaited quarterly reports from big retailers later in the week. Investor will focus on upcoming quarterly earnings reports from several major retailers this week. Target gained about 1.6%, while Lowe's lost 0.5%. Both will report on Wednesday. Shares of Walmart and Home Depot, both reporting later today, declined.

AMERICAN INDICES	CLOSE	PREVIOUS	1D%	5D%	1M%	YTD%
Dow Jones	36087,5	36100,3	-0,04	-0,95	2,25	17,91
Nasdaq	15853,8	15861,0	-0,04	-0,80	6,42	23,01
S&P 500	4682,8	4682,9	0,00	-0,40	4,73	24,67



## ASIAN MARKET COMMENTARY

### SELECTED HEADLINES

Shares in Asia-Pacific were mostly higher this morning as the Reserve Bank of Australia's governor pushed back against calls for a rate hike next year. Minutes from the Australian central bank's November monetary policy meeting minutes released Tuesday showed the RBA expecting to hold steady on the cash rate till 2024. "Given the latest data and forecasts, the central scenario for the economy continued to be consistent with the cash rate remaining at its current level until 2024," the minutes said.

ASIAN INDICES	CLOSE	PREVIOUS	1D%	5D%	1M%	YTD%
Hang Seng	25390,9	25328,0	0,25	2,53	0,24	-6,76
Nikkei 225	29776,8	29610,0	0,56	0,91	2,44	8,50
Shanghai	3533,3	3539,1	-0,16	0,99	-1,09	1,73



## COMMODITIES

### BRENT CRUDE (\$)

last 100 days



### PLATINUM (\$)

last 100 days



## COMMODITY MARKET COMMENTARY

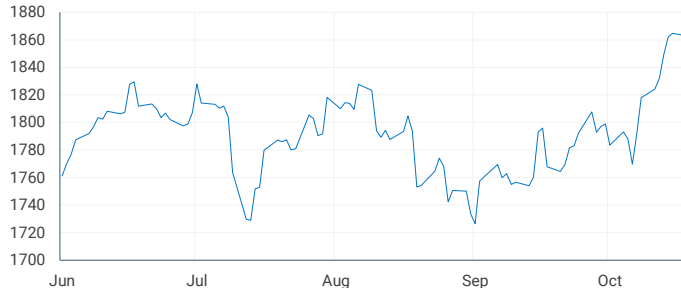
### SELECTED HEADLINES

Gold prices steadied this morning, after rallying to a five-month peak in the previous session, as concerns over broadening inflationary risks kept bullion's safe-haven appeal intact in the face of a stronger U.S. dollar and elevated bond yields. Oil prices slipped earlier today as a rebound in Covid-19 cases in Europe raised concerns over demand amid expectation that supply will rise, while some in the market still fear the United States may release crude reserves to stop a rally in gasoline prices. Europe has again become the epicenter of the Covid-19 pandemic, prompting some governments to consider re-imposing lockdowns.

COMMODITY	LAST	CLOSE	% CHG	1D%	1M%	YTD%
Brent Crude (\$)	82,7	82,1	0,76	0,17	-3,22	69,21
Gold (\$)	1866,3	1862,9	0,18	-0,10	5,38	-1,85
Palladium	2144,0	2153,9	-0,46	2,08	3,78	-12,23
Platinum (\$)	1090,5	1090,7	-0,02	0,41	2,99	1,75
Silver	25,1	25,1	0,29	-0,95	7,48	-5,02

### GOLD (\$)

last 100 days



## CURRENCIES

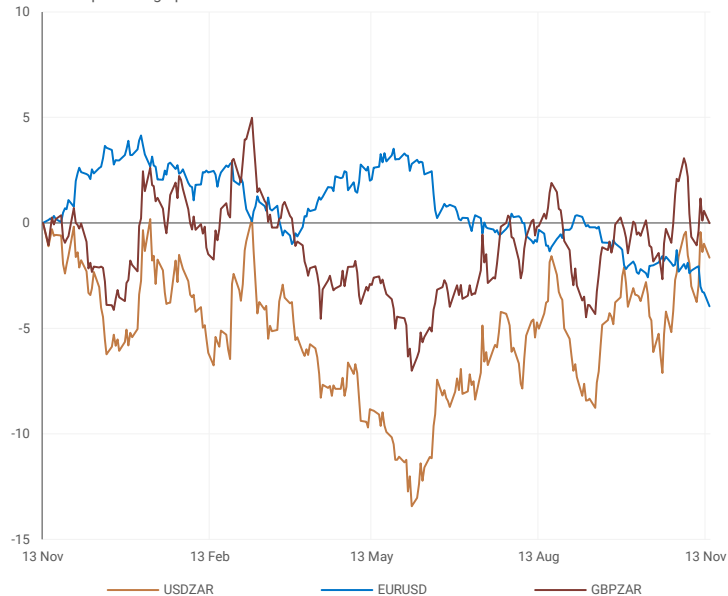
COMMODITY	LAST	CLOSE	% CHG	1D%	1M%	YTD%
USDZAR	15,2	15,2	-0,29	-0,66	4,78	3,76
GBPZAR	20,4	20,4	-0,17	-0,59	1,85	1,80
EURZAR	17,3	17,3	-0,14	-1,18	2,31	-3,45
AUDZAR	11,2	11,2	-0,15	-0,31	3,39	-0,93
EURUSD	1,1	1,1	0,14	-0,67	-1,99	-6,95
USDJPY	114,1	114,1	0,01	0,20	-0,11	10,51
GBPUSD	1,3	1,3	0,11	0,01	-2,42	-1,84
USDCHF	0,9	0,9	-0,12	0,43	0,21	4,51
AUDCAD	0,9	0,9	0,10	-0,08	0,14	-6,10

### SELECTED HEADLINES

The rand rose on Monday, buoyed by improving global sentiments as upbeat Chinese economic data eased concerns about a slowdown in the world's No.2 economy. At the end of the session, the rand was trading around R15.25 to the dollar, 0.66% firmer. Meanwhile, the euro was huddled at a 16-month low this morning while the dollar was firm as traders awaited U.S. retail sales data, wary a strong reading could stoke inflation and add pressure on the Federal Reserve to hike rates.

### CURRENCY PAIRS

normalised percentage performances



### USDZAR

last 100 days



### EURUSD

last 100 days



Disclaimer: This note is prepared for Sanlam Private Wealth (Pty) Ltd, by K2013143132 (Pty) Ltd trading as Thompson Green. Thompson Green is an independent company contracted to Sanlam Private Wealth (Pty) Ltd. The views expressed in this note are those of Thompson Green and/or its analysts and not necessarily the views of Sanlam Private Wealth (Pty) Ltd, Sanlam or any officer or agent thereof. K2013143132 (Pty) Ltd trading as Thompson Green is a research house and not a registered broker, financial advisor or financial service provider. Our editors and customer services teams also do not give personal investment advice. The information in this document is general advice only and may not be appropriate to your particular investment objectives, financial situation or particular needs, so before investing or if in any doubt about your personal situation, you should seek professional advice from a stockbroker or independent financial adviser authorised by the Financial Services Board. We research our recommendations and articles thoroughly, but disclaim all liability for any inaccuracies or omissions in this publication and any trading or investment losses you may incur. Should you outperform inflation, we will take the credit. Thompson Green also acts as an Introducer of Business to Authorised Financial Services Providers. All accounts opened are held by the Authorised Registered Financial Services Provider and not Thompson Green. The information in this email is confidential and may be legally privileged. It is intended solely for the addressee. Access to this email by anyone else is unauthorised. If you are not the intended recipient, any disclosure, copying, distribution or any action taken or omitted to be taken in reliance on it, is prohibited and may be unlawful. If you are not the intended recipient please return the message to the sender and delete it from your records.