

GLOBAL OVERVIEW | SELECTED INDICES

SOUTH AFRICAN INDICES	CLOSE	PREVIOUS	1D%	5D%	1M%	YTD%
All Share	70558,9	71015,4	-0,64	-0,54	5,23	18,77
Top 40	64169,2	64566,4	-0,62	-0,26	6,02	18,00
Financial 15	13798,6	14068,0	-1,92	-2,36	-0,36	14,41
Industrial 25	93462,9	94355,5	-0,95	-1,80	7,85	19,98
Resource 10	66875,0	66658,8	0,32	2,59	6,20	16,15
Mid Cap	76416,9	77610,7	-1,54	-2,04	-1,39	18,94
Small Cap	63498,7	63547,0	-0,08	-1,99	-0,85	42,84
Banks	8120,6	8268,6	-1,79	-1,51	0,56	18,57
General Retailers	7862,1	7737,8	1,61	0,98	3,68	69,06
Property (J253) - TR	1564,6	1576,9	-0,78	-2,20	2,03	27,25

AMERICAN INDICES	CLOSE	PREVIOUS	1D%	5D%	1M%	YTD%
Dow Jones	35804,4	35813,8	-0,03	-0,35	0,36	16,98
Nasdaq	15845,2	15775,1	0,44	-0,48	5,00	22,94
S&P 500	4701,5	4690,7	0,23	0,27	3,44	25,17
Dollar Index	96,8	96,5	0,28	1,01	3,39	7,61
US VIX	18,6	19,4	-4,13	8,59	20,41	-18,33

EUROPEAN INDICES	CLOSE	PREVIOUS	1D%	5D%	1M%	YTD%
CAC 40	7042,2	7044,6	-0,03	-1,60	4,58	26,85
DAX 30	15878,4	15937,0	-0,37	-2,29	2,16	15,74
Eurostoxx 50	4276,3	4283,8	-0,18	-2,83	2,09	20,37
FTSE	7286,3	7266,7	0,27	-0,07	1,13	12,78

ASIAN INDICES	CLOSE	PREVIOUS	1D%	5D%	1M%	YTD%
Hang Seng	24685,5	24651,6	0,14	-3,76	-5,52	-9,35
Nikkei 225	29302,7	29774,1	-1,58	-1,30	1,73	6,77
Shanghai	3592,7	3589,1	0,10	1,56	0,28	3,44

EARLY MORNING	LAST	CLOSE	% CHG	1D%	5D%	YTD%
Tencent	481,0	472,2	1,86	-1,87	-7,23	-16,57
BHP Billiton	3872,0	3824,0	1,26	0,50	6,34	-9,88

INTERNATIONAL ECONOMIC CALENDAR | SELECTED EVENTS

TIME	AREA	TODAY'S EVENTS & RELEASES	PERIOD	EXP.	PREV.
11:30	RSA	PPI MoM	Oct	0,9%	0,9%
11:30	RSA	PPI YoY	Oct	0,08	7,8%
15:30	EUR	ECB President Lagarde Speaks	---	---	---
19:00	GBP	BOE Gov Bailey Speaks	---	---	---
AD	USD	Bank Holiday	---	---	---

TIME	AREA	PREVIOUS SESSION'S RELEASES	PERIOD	EXP.	ACT.
12:00	RSA	Business Confidence	Q4	46	43
15:30	USD	Prelim GDP q/q	Q3	2,2%	2,1%
15:30	USD	Core Durable Goods Orders m/m	Oct	0,5%	0,5%
15:30	USD	Durable Goods Orders m/m	Oct	0,2%	-0,5%
15:30	USD	Unemployment Claims	---	259K	199K

LOCAL EQUITIES | JSE ALL SHARE COMPANIES

BEST ONE-DAY % PERFORMERS	CODE	CLOSE	1D%	5D%	YTD%
Metair estments	MTA	2926	4,65	3,98	56,05
Afrimat	AFT	5262	4,45	2,61	22,32
Tsogo Sun Hotels	TGO	335	4,04	1,52	129,45
Telkom SA SOC	TKG	4834	3,00	0,19	57,41
African Rainbow Cap	AIL	515	3,00	8,19	15,47
AdvTECH	ADH	1879	2,62	2,45	97,79
Murray & Roberts	MUR	1472	2,58	3,52	84,69

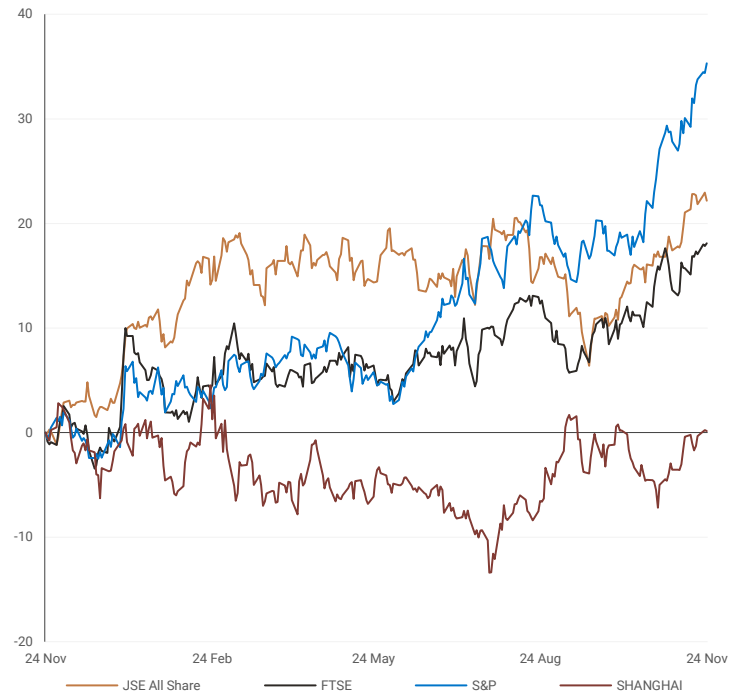
WORST ONE-DAY % PERFORMERS	CODE	CLOSE	1D%	5D%	YTD%
Datec	DTC	3682	-13,61	-10,09	49,98
AVI	AVI	8100	-6,90	-2,23	10,63
Old Mutual	OMU	1320	-5,24	-8,46	11,02
Blue Label Telecoms	BLU	500	-3,85	-0,79	29,53
RFG	RFG	1155	-3,83	-5,71	-4,39
Raubex	RBX	3463	-3,19	-6,91	61,07
Aspen Pharmacare	APN	21639	-3,05	1,55	72,60

DIVIDEND DATA | SELECTED JSE ALL SHARE COMPANIES

COMPANY	CODE	DIVIDEND
Afrimat	AFT	40 ZARc
Stor-Age	SSS	56.6 ZARc
Pick n Pay	PIK	35.8 ZARc
Tradehold	TDH	30 ZARc

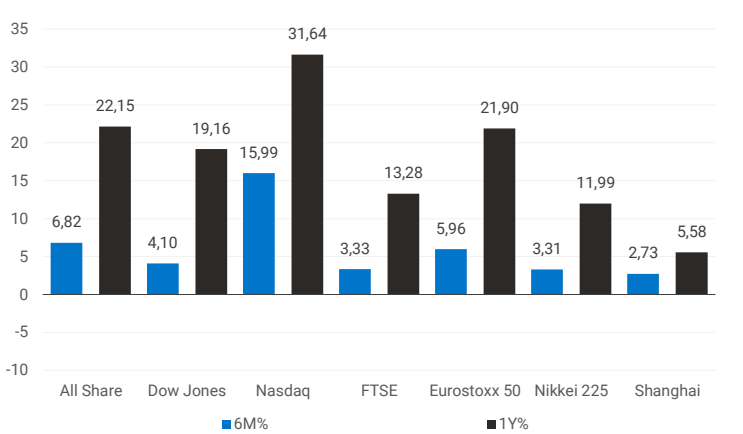
INTERNATIONAL INDICES

normalised percentage performances (in rand terms)



INTERNATIONAL INDICES

6-month & 1-year percentage performances



JSE ALL SHARE INDEX

2020 v 2021



Last date to trade 30 Nov

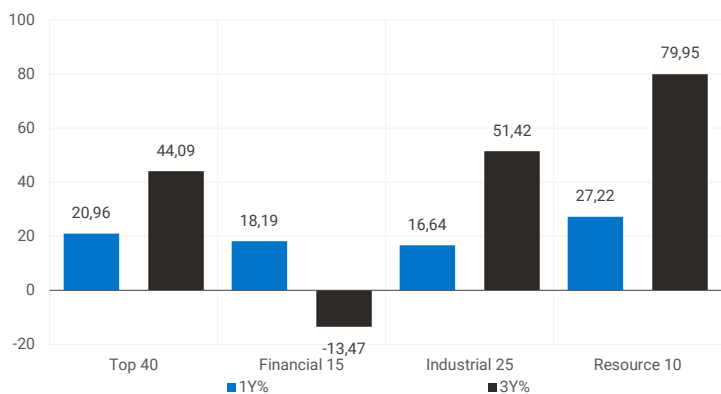
COMPANY	CLOSE	PREVIOUS	1D%	5D%	1M%	YTD%
Absa Group	13410	13771	-2,62	-3,59	-5,15	11,88
Anglo	61453	61677	-0,36	2,54	9,35	26,71
Angloplat	165195	165112	0,05	-0,59	4,63	14,47
Anglo Gold Ashanti	32124	32509	-1,18	-2,24	9,92	-6,21
Anheuser-Busch Inbev	93011	93462	-0,48	0,87	11,92	-10,48
Bhp Group Plc	43300	42275	2,42	9,62	9,14	11,29
Bid Corp	30592	31310	-2,29	-1,78	-7,04	16,31
British American Tobacco Plc	54819	54890	-0,13	2,35	3,63	0,50
Compagnie Financiere	23645	23567	0,33	0,69	31,53	80,36
Capitec	179255	182254	-1,65	-2,93	5,38	25,12
Discovery	13796	14211	-2,92	-4,88	1,73	-10,15
Firstrand	5747	5865	-2,01	-2,68	-0,29	12,60
Goldfields	17149	17393	-1,40	-1,06	15,53	24,66
Glencore Plc	8017	7934	1,05	3,94	7,16	71,19
Implats	19415	19847	-2,18	-10,39	-8,07	-3,84
Kumba Iron Ore	45034	44283	1,70	9,17	-9,03	-27,69
Mondi Plc	38268	38637	-0,96	-0,08	4,46	11,53
Mtn Group	16173	16262	-0,55	2,84	18,64	168,70
Naspers -N	252700	256624	-1,53	-8,18	-5,18	-24,14
Prosus Nv	130400	133529	-2,34	-4,64	-3,59	-26,43
Stanbank	13040	13260	-1,66	-1,80	-4,28	2,61
Shoprite	19287	19695	-2,07	-1,64	4,75	37,76
Sanlam	5732	5844	-1,92	-3,78	-6,84	-2,43
Sasol	26711	26592	0,45	2,62	1,60	99,44
Sibanye Stillwater	5025	5118	-1,82	-9,75	-7,90	-16,25
Vodacom Group	13626	13714	-0,64	-0,62	-0,84	9,54

SELECTED HEADLINES

Stocks fell, dragged by gold shares tracking a fall in prices of the yellow metal on the stronger dollar. The mining index fell 1.46%, with gold mining companies the main drag. Sibanye Stillwater, Harmony Gold, DRD Gold, Gold Fields and AngloGold Ashanti all dropped between 1.1% and 1.8%. Food producer and fashion retailer AVI was the second biggest decliner on the All-share index, falling 6.90% after it revealed it had progressed discussions with Mondelez International regarding the potential acquisition of its Snackworks division. Overall, the Johannesburg All-Share index fell 0.64%, while the Top-40 index closed 0.62% lower.



LOCAL INDICES
1-year & 3-year percentage performances



SENS ANNOUNCEMENTS

SELECTED RELEASES

Lewis surges 9.5% on strong half-year results

The share price of JSE-listed household furniture retailer Lewis Group surged 9.48% on Wednesday, hitting a new 52-week high and closing at R47.45 following the release of a strong performance for the six months ended September 30. Lewis posted a 20.7% increase in its merchandise sales to R1.99 billion, leveraging high volumes of stock availability. The group's interim results show credit sales grew by 24.4% and cash sales by 17.1%, with credit sales accounting for 50.6% (H1 2021: 49.1%) of total merchandise sales. Comparable store sales increased 17.9%. However, the double-digit growth in sales is compared to the Covid-hit interim period of its prior financial year. Its comparative half-year period (April-September 2020) reflected the impact of the Covid-19 hard lockdown, when all 681 of its SA stores were forced shut for at least six weeks. The retailer says its stores outside SA, which represent 15.8% of the store base, grew 17.5% and accounted for 18.3% of the company's sales. "Solid merchandise sales growth and reduced debtor costs contributed to operating profit increasing by 23.3% to R341.2 million, with the operating profit margin improving from 16.8% to 17.1%," Lewis notes in its results statement. The group's headline earnings increased by 24.5% to R226 million, with headline earnings per share (Heps) increasing 39.7% to 330 cents. The group repurchased 5.4 million shares at a cost of R194.5 million during the past six months. Since the start of the share repurchase programme in 2017, the group has bought back 22.7 million shares at an average price of R29.52 per share. Lewis Group declared an interim dividend of 195 cents per share, 46.6% up compared to its prior interim period.

EXPECTED COMPANY REPORTING SCHEDULE

COMPANY	CODE	RELEASE	DATE
Mr Price	MRP	Interim	25 Nov
Sasfin	SFN	AGM	25 Nov
Hosken	HCI	Interim	25 Nov
Invicta	IVT	Interim	25 Nov
Tsogo Sun	TSG	Interim	25 Nov

Move | 9.48% Open | 4302c Close | 4745c High | 4796c Low | 4302c

GEPF to cut allocation to PIC unit

Africa's biggest pension fund expects to cut the amount of money it allocates to a division of South Africa's Public Investment Corp. that has to date helped it fulfill some of its environment, social and governance aspirations. South Africa's Government Employees Pension Fund allowed a R70 billion allocation agreement with the PIC, the continent's largest fund manager, to lapse in March and is now negotiating a new mandate. That, according to GEPF Head of Investments Sifiso Sibiyi, will include "the introduction of more consequence management" for poor investment decisions. The GEPF's decision comes after the R2.34 trillion PIC was the subject of a judicial inquiry that concentrated on its Isibaya Fund, which makes investments in unlisted assets and focuses on Black economic empowerment transactions and social infrastructure projects. While the GEPF, which oversees R2.09 trillion, will still benefit from the money that has been spent, no new investment can take place without a fresh mandate. The so-called Mpati Commission questioned the governance of the division and the flouting of investment procedures. A number of senior PIC officials, including former Chief Executive Officer Dan Matjila, have since left the organisation.

BANK & OTHER SELECTED PREFERENCE SHARES

COMPANY	CODE	Close	CLEAN YIELD	APPROX. NXT. LDT
Nedbank	NBKP	960	7,64	13 Apr
Investec Bank	INLP	9851	8,29	08 Dec
Investec Limited	INPR	8050	8,29	08 Dec
Standard Bank	SBPP	8190	7,94	08 Sep
Firstrand Bank	FSRP	8300	7,69	16 Feb
Absa	ABSP	73245	7,97	13 Apr
Capitec	CPIP	10500	6,21	16 Mar
Grindrod	GNDP	7525	8,54	23 Mar
Netcare	NTCP	8100	8,37	03 Nov
Discovery	DSBP	8850	8,26	09 Mar
Invicta	IVTP	8498	9,99	24 Nov

LOCAL EQUITIES | JSE MID CAP COMPANIES

COMPANY	CODE	CLOSE	PREVIOUS	1D%	1M%	YTD%
Aspen	APN	21639	22320	-3,05	-13,12	72,60
African Rainbow	ARI	20677	21117	-2,08	-4,75	-21,05
Avi	AVI	8100	8700	-6,90	1,00	10,63
Barworld	BAW	14210	14481	-1,87	14,29	55,98
Bidvest Group	BVT	18014	18359	-1,88	-5,35	14,72
Capco	CCO	3586	3598	-0,33	7,85	25,56
Clicks Group	CLS	28170	28471	-1,06	3,44	11,49
Coronation	CML	5500	5535	-0,63	8,42	27,40
Dis-Chem	DCP	3364	3443	-2,29	5,19	60,11
Distell Group	DGH	16309	16400	-0,55	-9,51	71,60
Drdgold	DRD	1446	1467	-1,43	4,18	-19,53
Exxaro Resources	EXX	15400	15450	-0,32	-4,98	10,87
Fortress Reit A	FFA	1275	1283	-0,62	-5,83	-6,59
Fortress Reit B	FFB	301	307	-1,95	25,42	0,00
Growthpoint	GRT	1317	1320	-0,23	-0,38	4,77
Harmony Gold	HAR	6249	6359	-1,73	4,90	-12,72
Investec	INL	8186	8236	-0,61	22,34	123,42
Investec	INP	8243	8304	-0,73	25,08	118,94
Italtile	ITE	1825	1780	2,53	9,22	23,31
Libhold	LBH	8823	8858	-0,40	-2,31	42,35
Life Healthcare	LHC	2301	2334	-1,41	-2,71	36,80
Multichoice Group	MCG	11986	12049	-0,52	-3,96	-10,55
Mediclinic Int.	MEI	6575	6668	-1,39	-2,22	15,47
Montauk Renewables	MKR	16000	15000	6,67	-5,07	-70,67
Mr Price Group	MRP	18856	18900	-0,23	-8,01	10,50
Momentum	MTM	1906	1932	-1,35	-5,64	20,94
Ninety One Plc	N91	5622	5724	-1,78	3,75	23,26
Nedbank	NED	16106	16364	-1,58	-7,42	24,39
Northam Platinum	NHM	22074	22607	-2,36	-4,91	5,35
Nepi Rockcastle Plc	NRP	10220	10329	-1,06	-0,29	9,30
Netcare	NTC	1499	1521	-1,45	-6,89	19,92
Ninety One	NY1	5387	5507	-2,18	3,00	22,43
Old Mutual	OMU	1320	1393	-5,24	-14,73	11,02
Pik N Pay	PIK	5426	5554	-2,30	-7,15	7,96
Pepkor	PPH	2245	2295	-2,18	-3,57	64,71
Psg	PSG	7950	7981	-0,39	0,45	32,77
Quilter Plc	QLT	3119	3150	-0,98	2,33	1,46
Rbplapts	RBP	12192	12113	0,65	32,25	86,48
Redefine	RDF	485	495	-2,02	6,13	45,65
Remgro	REM	12875	13194	-2,42	-3,19	33,84
Resilient Reit	RES	5580	5573	0,13	-2,53	31,91
Rand Merchant Inv	RMI	4183	4232	-1,16	8,90	30,51
Reinet Investments Sca	RNI	26021	26283	-1,00	-8,43	-5,59
Sappi	SAP	4335	4240	2,24	2,60	32,08
Santam	SNT	25267	24900	1,47	-0,02	-0,83
Spar	SPP	16763	17177	-2,41	-14,52	-11,56
Sirius Real Estate	SRE	2889	2929	-1,37	7,16	49,69
Tigebrands	TBS	18473	19040	-2,98	-1,73	-11,26
The Foschini Group	TFG	12287	12500	-1,70	-4,14	20,10
Thungela Resources	TGA	7394	7113	3,95	0,60	1364,16
Telkom	TKG	4834	4693	3,00	1,45	57,41
Truworths	TRU	5030	5094	-1,26	-7,66	36,50
Textainer	TXT	55800	55881	-0,14	2,42	95,80
Woolies	WHL	5192	5345	-2,86	-5,60	31,31

LOCAL EQUITIES | JSE SMALL CAP COMPANIES

COMPANY	CODE	CLOSE	PREVIOUS	1D%	1M%	YTD%
Advtech	ADH	1879	1831	2,62	5,27	97,79
Altron	AEL	1021	1025	-0,39	-7,35	-6,42
Aeci	AFE	10933	10800	1,23	-1,89	25,67
Alexander Forbes	AFH	405	400	1,25	-5,81	2,27
Afrimat	AFT	5262	5038	4,45	3,08	22,32
Arrowhead Prop.	AHB	420	415	1,20	1,94	81,03
African Rainbow Cap.	AIL	515	500	3,00	-4,63	15,47
Adcock Ingram	AIP	4736	4740	-0,08	-2,73	2,96
Astral	ARL	16200	16339	-0,85	-9,48	16,13
Attacq	ATT	695	692	0,43	3,89	39,84
Brait	BAT	406	410	-0,98	-3,33	8,85
Blue Label Telecoms	BLU	500	520	-3,85	-7,41	29,53
Bytes Technology	BYI	11364	11699	-2,86	9,09	70,37
City Lodge Hotels	CLH	495	494	0,20	-14,36	98,00
Curro	COH	1205	1228	-1,87	-1,63	27,11
Cashbuild	CSB	23343	23718	-1,58	-11,61	-1,51
Datatec	DTC	3682	4262	-13,61	-6,31	49,98
Emira	EMI	912	915	-0,33	-5,88	36,94
Epp N.V	EPP	1260	1272	-0,94	5,44	21,74
Equites Property Fund	EQU	2141	2181	-1,83	5,47	23,26
Famous Brands	FBR	6920	6900	0,29	2,06	41,37
Grindrod	GND	482	489	-1,43	-9,91	-4,55
Hci	HCI	8000	8010	-0,12	-3,51	45,45
Hudaco	HDC	13600	13780	-1,31	-2,40	67,90
Hammerson Plc	HMN	661	654	1,07	0,46	27,12
Hyprop	HYP	3286	3311	-0,76	11,81	11,31
Investec Australia Prop.	IAP	1779	1770	0,51	4,34	29,38
Investec Prop Fund	IPF	1087	1116	-2,60	3,92	19,32
Imperial	IPL	6325	6328	-0,05	0,88	69,34
Jse	JSE	10432	10512	-0,76	-1,06	-7,27
Kap Industrial	KAP	438	428	2,34	-11,52	38,61
Karoo	KRO	50500	48546	4,03	-4,33	---
Psg Konsult	KST	1250	1250	0,00	-8,09	38,89
Liberty Two Degrees	L2D	440	432	1,85	0,00	3,53
Long4Life	L4L	520	520	0,00	0,00	58,05
Libstar	LBR	670	672	-0,30	1,36	5,85
Lighthouse Capital	LTE	820	828	-0,97	-1,20	20,06
Massmart	MSM	6400	6394	0,09	3,78	52,31
Mas Real Estate Inc	MSP	1919	1923	-0,21	8,54	50,51
Metair	MTA	2926	2796	4,65	-3,91	56,05
Motus	MTH	10600	10661	-0,57	6,00	89,29
M&R Hold	MUR	1472	1435	2,58	11,94	84,69
Oceana	OCE	6130	6169	-0,63	-3,05	-4,59
Omnia	OMN	6218	6250	-0,51	-1,27	34,91
Pan African Resource	PAN	388	390	-0,51	9,60	-19,17
Raubex	RBX	3463	3577	-3,19	-0,75	61,07
Rhodes Food Pty	RFG	1155	1201	-3,83	-6,40	-4,39
Reunert	RLO	4929	4995	-1,32	1,09	36,16
Sa Corp Real Estate	SAC	219	220	-0,45	6,31	26,59
Steinhoff International N.V.	SNH	201	202	-0,50	-15,19	93,27
Super	SPG	3055	3098	-1,39	-10,65	30,50
Stor-Age Property Reit	SSS	1403	1417	-0,99	0,57	3,54
Stenprop	STP	3900	3830	1,83	5,41	41,97
Sun Int	SUI	2470	2530	-2,37	-15,56	99,52
Transaction Capital	TCP	4100	4198	-2,33	-6,22	64,72
Tsogo Sun Hotels	TGO	335	322	4,04	-7,71	129,45
Tsogo Sun Gaming	TSG	994	992	0,20	-11,64	94,90
Vukile	VKE	1263	1261	0,16	2,43	57,88
Wbhovco	WBO	11093	11097	-0,04	1,12	21,71
Zeder Investments	ZED	313	317	-1,26	0,32	19,92

SOUTH AFRICAN 10-YEAR BOND

2021 v 2020



10-YEAR BOND YIELDS | SELECTED ITEMS (BASIS POINT CHANGE)

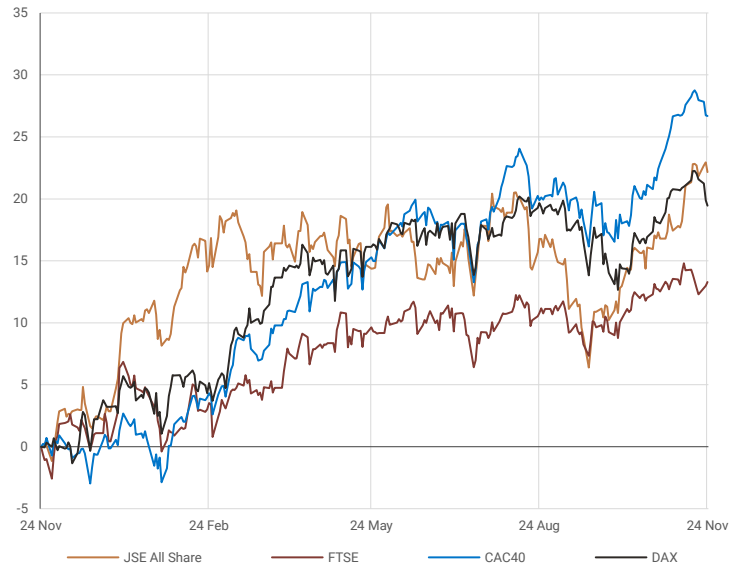
REGION	YIELD	1D%	1M%	YTD%
United States	1,63	-3	---	76
United Kingdom	0,99	---	-15	67
Germany	-0,23	-1	-12	33
Japan	0,08	1	-1	6
South African 10Y	9,76	7	20	89

GLOBAL INTEREST RATES | SELECTED ITEMS

REGION	CURRENT RATE
United States	0,00%-0,25%
United Kingdom	0,10%
European	0,00%
SA Repo Rate	3,75%
SA Prime Rate	7,25%

EUROPEAN INDICES

normalised percentage performances



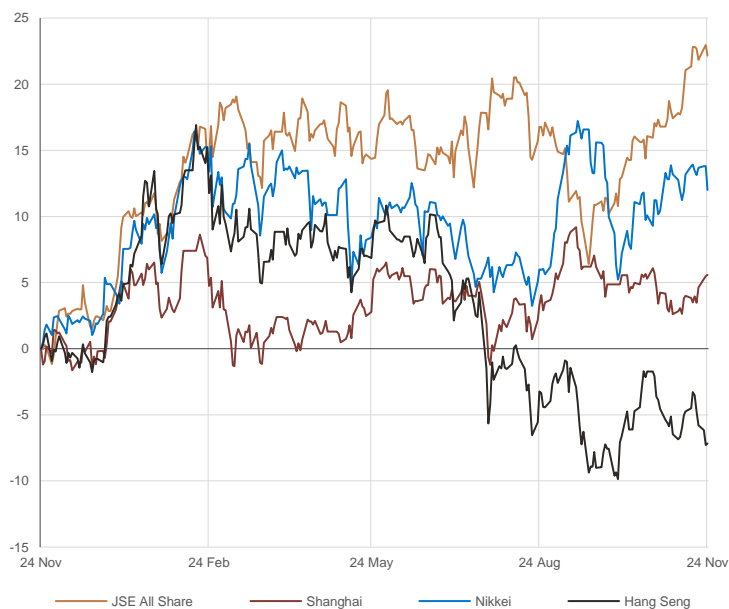
AMERICAN INDICES

normalised percentage performances



ASIAN INDICES

normalised percentage performances



EUROPEAN MARKET COMMENTARY

SELECTED HEADLINES

European stocks eked out small gains on Wednesday as traders digested a fresh batch of economic data and monitored the region's latest Covid surge. The pan-European Stoxx 600 closed up 0.1% after choppy trading earlier in the session. Telecoms shares rose 1.2% to lead the gains while autos stocks sank 1.5%. European investors continue to monitor the acute Covid crisis in the region this week, with more countries considering stricter restrictions and partial lockdowns to curb rising infections.

EUROPEAN INDICES	CLOSE	PREVIOUS	1D%	5D%	1M%	YTD%
CAC 40	7042,2	7044,6	-0,03	-1,60	4,58	26,85
DAX 30	15878,4	15937,0	-0,37	-2,29	2,16	15,74
Eurostoxx 50	4276,3	4283,8	-0,18	-2,83	2,09	20,37
FTSE	7286,3	7266,7	0,27	-0,07	1,13	12,78



AMERICAN MARKET COMMENTARY

SELECTED HEADLINES

U.S. stocks pushed modestly higher on Wednesday as the recent jump in bond yields took a breather, allowing tech stocks to recover. Shares of Facebook-parent Meta rose 1.1% to bolster the Nasdaq, while Roku and Peloton shook off rough starts to the week to rise more than 2% each. Computer hardware company HP's shares got a 10.1% lift after reporting earnings that beat on the top and bottom lines and issuing higher first-quarter earnings guidance.

AMERICAN INDICES	CLOSE	PREVIOUS	1D%	5D%	1M%	YTD%
Dow Jones	35804,4	35813,8	-0,03	-0,35	0,36	16,98
Nasdaq	15845,2	15775,1	0,44	-0,48	5,00	22,94
S&P 500	4701,5	4690,7	0,23	0,27	3,44	25,17



ASIAN MARKET COMMENTARY

SELECTED HEADLINES

Shares in Asia-Pacific were mixed earlier today as investors reacted to the Bank of Korea's rate decision. South Korea's Kospi led losses regionally, dipping 0.5%. The Bank of Korea raised its policy rate by 25 basis points to 1%, a move that was largely expected by analysts in a Reuters poll. The South Korean central bank's decision followed a similar move by the Reserve Bank of New Zealand on Wednesday. Shares of developer Kaisa Group soared more than 12% as they resumed trading.

ASIAN INDICES	CLOSE	PREVIOUS	1D%	5D%	1M%	YTD%
Hang Seng	24685,5	24651,6	0,14	-3,76	-5,52	-9,35
Nikkei 225	29302,7	29774,1	-1,58	-1,30	1,73	6,77
Shanghai	3592,7	3589,1	0,10	1,56	0,28	3,44



COMMODITIES

BRENT CRUDE (\$)

last 100 days



PLATINUM (\$)

last 100 days



COMMODITY MARKET COMMENTARY

SELECTED HEADLINES

Gold prices edged up this morning as the dollar eased slightly, but comments from U.S. Federal Reserve policymakers suggesting the central bank could accelerate stimulus tapering weighed on the metal and kept it well below the key \$1,800 mark. Meanwhile, oil prices ticked lower earlier today with investors waiting to see how major producers respond to the emergency crude release by major consuming countries designed to cool the market, even as data pointed to healthy U.S. fuel demand.

COMMODITY	LAST	CLOSE	% CHG	1D%	1M%	YTD%
Brent Crude (\$)	82,3	82,2	0,12	-0,07	-4,10	69,41
Gold (\$)	1792,1	1788,9	0,18	-0,01	-0,20	-5,75
Palladium	1886,2	1856,0	1,63	-0,88	-8,25	-24,37
Platinum (\$)	991,9	980,0	1,22	0,82	-6,09	-8,58
Silver	23,6	23,5	0,23	-0,51	-3,17	-10,79

GOLD (\$)

last 100 days



CURRENCIES

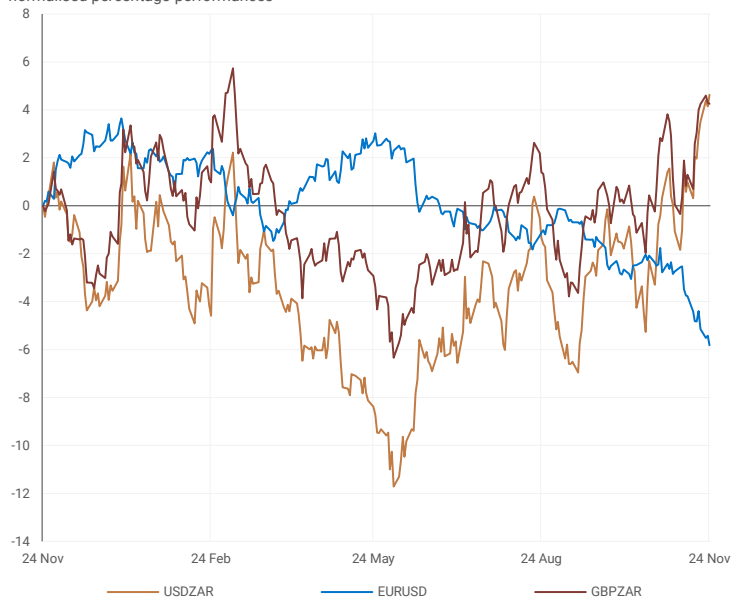
COMMODITY	LAST	CLOSE	% CHG	1D%	1M%	YTD%
USDZAR	15,9	15,9	-0,09	0,46	7,09	8,22
GBPZAR	21,2	21,2	0,14	-0,05	3,81	5,40
EURZAR	17,8	17,8	0,11	-0,09	3,09	-0,87
AUDZAR	11,4	11,4	0,08	-0,12	3,29	1,12
EURUSD	1,1	1,1	0,12	-0,42	-3,83	-8,31
USDJPY	115,4	115,4	-0,05	0,23	1,68	11,74
GBPUSD	1,3	1,3	0,15	-0,38	-3,10	-2,49
USDCHF	0,9	0,9	-0,03	0,13	1,94	5,51
AUDCAD	0,9	0,9	-0,01	-0,49	-1,31	-6,91

SELECTED HEADLINES

The rand fell to a 12-month low on Wednesday as the U.S. dollar strengthened and contagion from under-pressure Turkish lira lingered. At the close of the session, the rand was 0.46% weaker as it traded around R15.91 to the dollar. The U.S. dollar continued its upward trend on renewed bets the Federal Reserve will hike rates to tame inflation. With no major domestic market moving news, the rand is expected to keep tracking global drivers.

CURRENCY PAIRS

normalised percentage performances



USDZAR

last 100 days



EURUSD

last 100 days

