

GLOBAL OVERVIEW | SELECTED INDICES

SOUTH AFRICAN INDICES						
	CLOSE	PREVIOUS	1D%	5D%	1M%	YTD%
All Share	67538.77	67399.39	0.21	-0.53	-2.85	-8.37
Top 40	60943.44	60843.90	0.16	-0.62	-3.44	-9.11
Financial 15	15198.45	15207.06	-0.06	-0.50	-3.04	2.70
Industrial 25	82750.28	82598.09	0.18	-1.00	-2.56	-13.31
Resource 10	60966.05	60781.65	0.30	0.17	-4.80	-14.10
Mid Cap	76274.60	76047.75	0.30	0.56	-0.11	-4.30
Small Cap	70352.79	69609.99	1.07	1.11	4.23	4.21
Banks	9686.02	9715.98	-0.31	-0.52	-2.59	9.79
General Retailers	7082.12	6856.19	3.30	3.03	1.24	-5.86
Property (J253) - TR	1512.45	1500.92	0.77	-1.25	-5.03	-10.17
AMERICAN INDICES						
	CLOSE	PREVIOUS	1D%	5D%	1M%	YTD%
Dow Jones	31145.30	31318.44	-0.55	-2.03	-5.05	-14.29
Nasdaq	11544.91	11630.86	-0.74	-2.85	-8.79	-26.21
S&P 500	3908.19	3924.26	-0.41	-1.96	-5.72	-18.00
Dollar Index	110.59	109.78	0.74	1.65	3.91	15.58
US VIX	26.91	25.99	3.54	2.67	27.23	56.27
EUROPEAN INDICES						
	CLOSE	PREVIOUS	1D%	5D%	1M%	YTD%
CAC 40	6104.61	6093.22	0.19	-1.70	-5.68	-14.66
DAX 30	12871.44	12760.78	0.87	-0.69	-5.18	-18.97
Eurostoxx 50	3500.14	3490.01	0.29	-1.73	-6.05	-18.57
FTSE	7300.44	7287.43	0.18	-0.83	-1.87	-1.14
ASIAN INDICES						
	CLOSE	PREVIOUS	1D%	5D%	1M%	YTD%
Hang Seng	19202.73	19225.70	-0.12	-3.74	-4.95	-17.93
Nikkei 225	27626.51	27619.61	0.02	-2.02	-1.95	-4.05
Shanghai	3243.45	3199.91	1.36	0.50	0.51	-10.89
EARLY MORNING INDICATORS						
	LAST	CLOSE	%CHG	1D%	5D%	YTD%
Tencent	307.80	314.20	-2.04	-1.50	-2.90	-30.89
BHP Billiton	3630	3727	-2.60	-1.69	-10.73	-10.19

INTERNATIONAL ECONOMIC CALENDAR | SELECTED EVENTS

TIME	AREA	TODAY'S EVENTS & RELEASES	PERIOD	EXP.	PREV.
08:00	RSA	Foreign Exchange Reserves	Aug	\$59B	\$59.5B
11:00	EUR	Final Employment Change q/q	Q2	0.30%	0.30%
11:00	EUR	Revised GDP q/q	Q2	0.60%	0.60%
11:00	GBP	Monetary Policy Report Hearings	---	---	---
14:30	USD	Trade Balance	Jul	-70.2B	-79.6B
TIME	AREA	PREVIOUS SESSION'S RELEASES	PERIOD	EXP.	ACT.
11:30	RSA	GDP Growth Rate YoY	Q2	1.30%	0.20%
11:30	RSA	GDP Growth Rate QoQ	Q2	-0.70%	0.70%
15:45	USD	Final Services PMI	Aug	44.3	43.7
16:00	USD	ISM Services PMI	Aug	55.4	56.9
---	---	---	---	---	---

LOCAL EQUITIES | JSE ALL SHARE COMPANIES

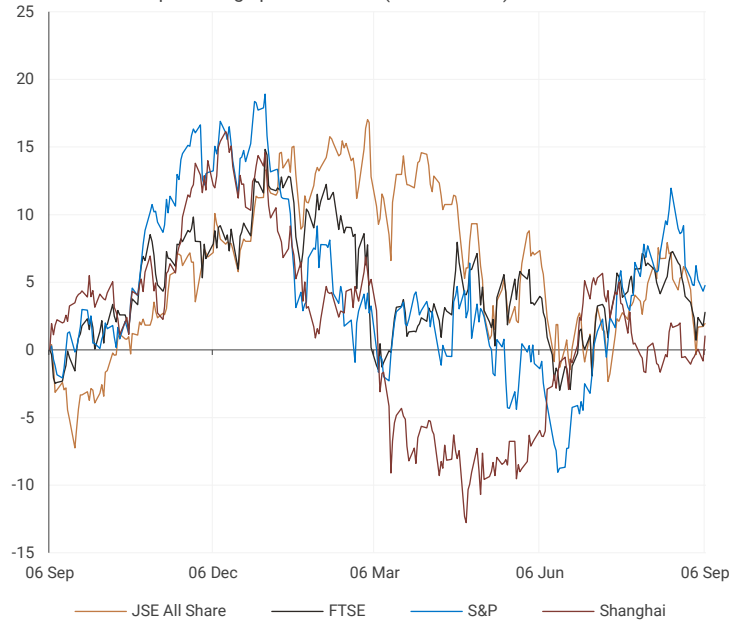
BEST ONE-DAY & PERFORMERS						
	CODE	CLOSE	1D%	5D%	YTD%	
Liberty Two Degrees LTD	L2D	479	9.36	12.71	0.84	
Attacq Limited	ATT	637	9.08	2.74	-20.28	
Italtile Ltd	ITE	1545	7.97	-0.90	-8.04	
Curro Holdings Limited	COH	1082	5.97	2.56	-13.09	
Thungela Resources Ltd	TGA	37170	5.65	11.67	339.67	
WORST ONE-DAY & PERFORMERS						
	CODE	CLOSE	1D%	5D%	YTD%	
Shoprite Holdings Ltd	SHP	21763	-7.49	-7.79	4.19	
PPC Limited	PPC	253	-4.17	-0.39	-49.90	
Adcock Ingram Hldgs Ltd	AIP	4820	-3.50	-2.63	-4.46	
Datatec Ltd	DTC	4218	-3.15	0.07	9.56	
Harmony GM Co Ltd	HAR	4104	-2.98	-10.04	-38.38	

DIVIDEND DATA

COMPANY	CODE	DIVIDEND	COMPANY	CODE	DIVIDEND
Emira Property Fund	EMI	63.2 ZARc	Globe Trade Centre S.A.	GTC	28 PLN
MultiChoice Group	MCG	565 ZARc			
Sasol	SOL	1470 ZARc			
Resilient REIT	RES	234 ZARc			
Schroder European Real Estate	SCD	0.1 EURc			

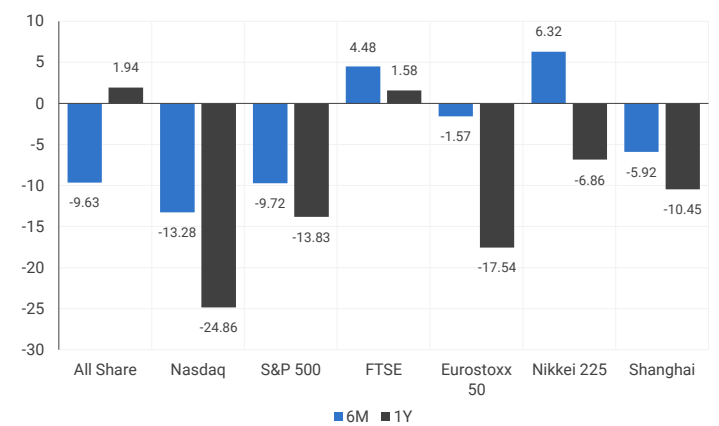
INTERNATIONAL INDICES

normalised percentage performances (in rand terms)

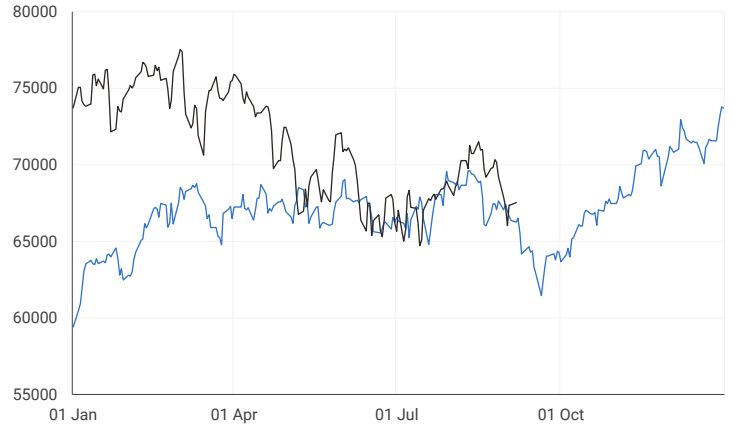


INTERNATIONAL INDICES

6-month & 1-year percentage performances



JSE ALL SHARE INDEX
2021 V 2022



LOCAL EQUITIES | JSE LARGE CAP COMPANIES (CENTS PER SHARE)

COMPANY	CLOSE	PREVIOUS	1D%	5D%	1M%	YTD%
Absa Group	18297	18429	-0.72	0.64	2.77	19.94
Anglo	55750	55019	1.33	1.03	-6.09	-14.46
Angloplat	119924	119423	0.42	-0.76	-5.50	-33.99
Anglo Gold Ashanti	23433	23993	-2.33	1.51	-5.05	-28.71
Anheuser-Busch Inbev	84600	83418	1.42	1.16	-4.92	-12.12
Bhp Group Plc	43169	43915	-1.70	-8.89	-5.83	-9.00
Bid Corp	33025	33081	-0.17	-1.32	7.50	1.17
British American Tobacco Plc	69463	68613	1.24	1.82	5.29	18.56
Compagnie Financiere	18771	18577	1.04	-3.02	-5.24	-22.23
Capitec	214196	212628	0.74	0.99	3.61	5.01
Discovery	12315	12356	-0.33	-3.94	-3.71	-14.22
Firststrand	6553	6578	-0.38	-0.46	-2.50	7.78
Goldfields	13952	14100	-1.05	-0.01	-10.63	-19.88
Glencore Plc	9643	9331	3.34	1.04	0.97	18.83
Implats	18390	18305	0.46	3.80	1.21	-18.27
Kumba Iron Ore	37963	38782	-2.11	-6.09	-16.55	-17.49
Mondi Plc	29467	28531	3.28	2.10	-2.59	-25.43
Mtn Group	13024	12841	1.43	3.11	-10.15	-23.71
Naspers -N	237661	239735	-0.87	-1.51	-2.99	-3.86
Prosus Nv	99673	101464	-1.77	-5.70	-8.83	-23.90
Stanbank	15497	15621	-0.79	-1.79	-6.98	10.68
Shoprite	21763	23525	-7.49	-7.79	-4.17	4.19
Sanlam	5482	5433	0.90	-0.11	-1.95	-7.65
Sasol	33494	33812	-0.94	-4.23	-2.26	29.32
Sibanye Stillwater	3858	3846	0.31	1.96	-7.48	-21.43
Vodacom Group	12916	12850	0.51	0.59	-6.14	-4.06

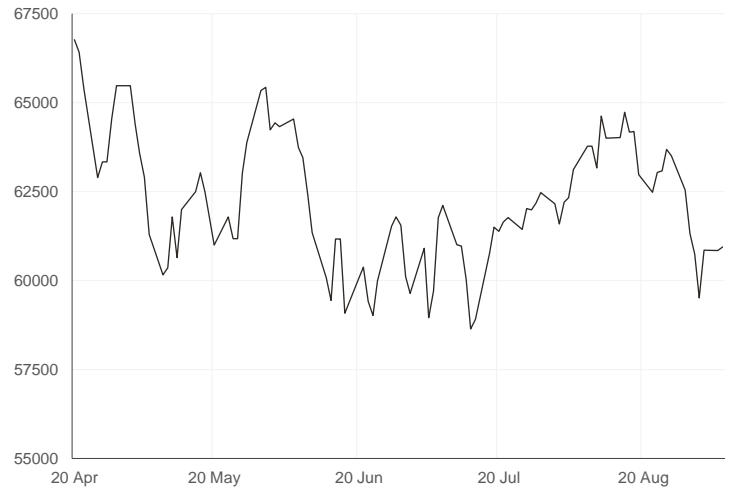
SOUTH AFRICAN MARKET COMMENTARY

SELECTED HEADLINES

Stocks on the Johannesburg Stock Exchange rose yesterday, the Top-40 and the broader All-Share indexes both closed around 0.2% higher. Data from the statistics agency showed that South Africa's economy contracted back to pre-pandemic size in the second quarter, weakened by floods that disrupted operations at a key export hub and the country's worst-ever power cuts. Gross domestic product contracted 0.7% in the second quarter in quarter-on-quarter, seasonally adjusted and non-annualised terms and grew 0.2% year-on-year unadjusted in the second three months of the year.

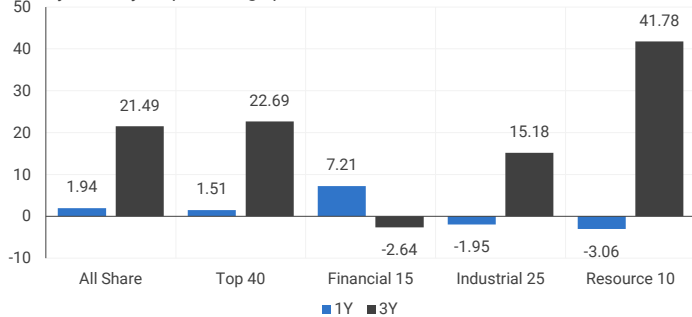
JSE TOP 40 INDEX

last 100 days



LOCAL INDICES

1-year & 3-year percentage performances



LOCAL INDICES

Normalised % performances comparison



EXPECTED COMPANY REPORTING SCHEDULE

COMPANY	CODE	RELEASE	DATE
Discovery	DSY	Final	07 Sep
Sanlam	SLM	Interim	08 Sep
Bell Equipment	BEL	Interim	09 Sep
Sasfin Holdings	SFN	Final	09 Sep
City Lodge Hotels	CLH	Final	10 Sep

BANK AND OTHER SELECTED PREFERENCE SHARES

COMPANY	CODE	CODE	CLEAN YIELD	APPROX. NEXT LDT
Investec Limited	INPR	8850	7.65	07 Dec 2022
Standard Bank	SBPP	9510	7.74	07 Sep 2022
Absa	ABSP	92600	7.07	14 Sep 2022
Capitec	CPIP	9408	7.48	14 Sep 2022
Steinhoff	SHFF	7700	9.94	19 Oct 2022
Grindrod	GNDP	9525	8.69	20 Sep 2022
Netcare	NTCP	8500	9.10	02 Nov 2022
Discovery	DSBP	9680	9.82	20 Sep 2022
Invicta	IVTP	9700	10.16	23 Nov 2022

Sources : JSE, Moneyweb, CNBC, BBC, CNN

Please see the bottom of the last page for the full disclaimer

SENS ANNOUNCEMENTS

SELECTED RELEASES

SHOPRITE HOLDINGS LIMITED – Results

Sale of merchandise was up 9.6% from R168 million in 2021 to R184 million in the 2022. Trading profit went from R10.3 million in 2021 to R11.03 million in 2022, up 6.8%. Operating profit rose by 11.8% in 2022, while profit before tax went up by 19.1%. The group recorded a profit of R5.7 million in 2022, up 21.5% from R4.7 million in 2021. Meanwhile Basic headline earnings per share rose 10.3% from 956.3 cents per share in 2021 to 1055.0 cents per share in 2022. Basic earnings per share also went up by 22.9% from 851.6 cents per share in 2021 to 1046.5 cents per share in 2022. The Board declared a final dividend of 367 cents (2021: 353 cents) per ordinary share, payable to shareholders on Monday, 3 October 2022. The dividend has been declared out of income reserves. This brings the total dividend for the year to 600 cents (2021: 544 cents) per ordinary share. The last day to trade cum dividend will be Tuesday, 27 September 2022.

Move | -7.49% Open | 21704c Close | 21763c High | 22655c Low | 21337c

ATTACQ LIMITED – Trading statement

Attacq's financial results for the year ended 30 June 2021 ('prior financial year') reported distributable income per share ('DIPS') of 46.8 cents per share. No dividend was declared in respect of the prior financial year. Attacq advises that DIPS for the year ended 30 June 2022 ('current financial year') is expected to be between 61.8 cents and 63.6 cents, a satisfactory increase of between 32.0% – 36.0% when compared with the prior financial year. The increase in DIPS is primarily due to improved trading conditions, lower rental discounts provided to, reduced finance charges and receipt of dividends from MAS. In its 31 December 2021 interim results, the Company provided DIPS guidance for the current financial year of between 46.0 cents and 48.1 cents. The higher expected DIPS when compared with the guidance, is a result of increased net operating income, higher collections and lower credit losses achieved in improved trading conditions, as well as reduced costs associated with Attacq's offshore investment holding structure.

Move | 9.08% Open | 580c Close | 637c High | 685c Low | 580c

METAIR INVESTMENTS LIMITED – Trading statement

Metair reports that operating profit declined by R328 million for 2022. Profit after tax declined by R95 million, arising from the restatement of net non-monetary assets of R185 million and retained income of R280 million through profit and loss. This will result in a net monetary gain amounting to R253 million. The group reports an approximate R1.7 billion uplift in assets. Roughly a R1.5 billion uplift in equity, mainly relating to the reversal of previous accumulated foreign currency translation losses within other comprehensive income. Headline earnings per share will increase between 40 cents and 50 cents per share compared to a headline earnings per share of 170 cents for the prior comparative period, which is a decrease of between 71% and 76%. Meanwhile earnings per share will decrease to between 35 cents per share and 45 cents per share compared to an earnings per share of 170 cents per share for the prior comparative period, which is a decrease of between 74% and 79%.

Move | 1.81% Open | 2651c Close | 2699c High | 2699c Low | 2552c

LOCAL EQUITIES | JSE MID CAP COMPANIES (CENTS PER SHARE)

COMPANY	CODE	CLOSE	PREVIOUS	1D%	1M%	YTD%
Aspen	APN	14437	14736	-2.03	-1.74	-35.68
African Rainbow	ARI	24576	24571	0.02	6.86	6.29
Avi	AVI	7246	7163	1.16	6.28	-1.95
Barworld	BAW	8814	8868	-0.61	-3.71	-41.38
Bidvest Group	BVT	22000	21993	0.03	4.08	16.13
Capco	CCO	2350	2296	2.35	-20.07	-35.14
Clicks Group	CLS	30220	29752	1.57	7.38	-4.22
Coronation	CML	3058	3107	-1.58	-8.47	-41.80
Dis-Chem	DCP	3480	3460	0.58	6.52	-1.75
Distell Group	DGH	17275	17207	0.40	-0.08	2.34
Drdgold	DRD	952	963	-1.14	-12.34	-27.88
Exxaro Resources	EXX	22345	22100	1.11	14.14	46.17
Fortress Reit A	FFA	980	993	-1.31	-17.79	-21.60
Fortress Reit B	FFB	436	439	-0.68	8.46	34.15
Growthpoint	GRT	1279	1280	-0.08	-4.84	-16.79
Harmony Gold	HAR	4104	4230	-2.98	-26.49	-38.38
Investec	INL	8111	8181	-0.86	-11.23	-7.36
Investec	INP	8298	8330	-0.38	-9.75	-4.28
Italtile	ITE	1545	1431	7.97	8.96	-8.04
Life Healthcare	LHC	2025	2014	0.55	-1.17	-15.73
Multichoice Group	MCG	11700	11800	-0.85	-1.84	-4.12
Mediclinic Int.	MEI	9835	9786	0.50	-2.04	44.50
Montauk Renewables	MKR	29539	29018	1.80	28.15	71.74
Mr Price Group	MRP	19500	19327	0.90	6.50	-2.26
Momentum	MTM	1655	1686	-1.84	7.68	-12.66
Ninety One Plc	N91	3944	3836	2.82	-5.08	-31.38
Nedbank	NED	20784	20813	-0.14	-4.86	18.75
Northam Platinum	NHM	15711	15960	-1.56	-9.16	-25.01
Nepi Rockcastle Plc	NRP	8969	8822	1.67	-4.28	-15.39
Netcare	NTC	1427	1436	-0.63	-7.28	-10.14
Ninety One	NY1	3861	3781	2.12	-5.30	-31.68
Old Mutual	OMU	1051	1069	-1.68	-8.05	-19.77
Pik N Pay	PIK	6087	6094	-0.11	7.91	16.01
Pepkor	PPH	2108	2093	0.72	5.77	-3.70
Psg	PSG	8785	8740	0.51	-0.15	-1.56
Quilter Plc	QLT	2053	2030	1.13	-16.41	-35.20
Rbplapts	RBP	14546	14570	-0.16	0.32	-6.95
Redefine	RDF	377	374	0.80	-5.04	-14.32
Remgro	REM	13279	13064	1.65	-3.04	1.25
Resilient Reit	RES	5480	5409	1.31	-2.87	-8.28
Rand Merchant Inv	RMI	2749	2736	0.48	-0.04	31.58
Reinet Investments Sca	RNI	28857	28495	1.27	-1.17	0.89
Sappi	SAP	4504	4507	-0.07	-12.78	-1.36
Santam	SNT	24530	23800	3.07	0.31	-8.81
Spar	SPP	15465	15533	-0.44	14.34	-7.46
Sirius Real Estate	SRE	1576	1553	1.48	-17.40	-48.04
Tigebrands	TBS	16673	16861	-1.11	5.66	-7.88
The Foschini Group	TFG	13141	13038	0.79	7.62	6.06
Thungela Resources	TGA	37170	35182	5.65	38.01	339.67
Telkom	TKG	4898	4770	2.68	16.07	-9.43
Truworths	TRU	5702	5759	-0.99	11.80	9.13
Textainer	TXT	52424	52541	-0.22	-2.29	-8.83
Woolies	WHL	6192	6053	2.30	18.10	19.40

LOCAL EQUITIES | JSE SMALL CAP COMPANIES (CENTS PER SHARE)

COMPANY	CODE	CLOSE	PREVIOUS	1D%	1M%	YTD%
Advtech	ADH	1692	1650	2.55	1.99	-3.75
Altron	AEL	870	884	-1.58	7.41	-4.92
Aeci	AFE	8201	8380	-2.14	-7.91	-26.78
Alexander Forbes	AFH	490	470	4.26	4.93	9.13
Afrimat	AFT	5180	5027	3.04	-1.15	-9.80
Arrowhead Prop.	AHB	304	305	-0.33	-4.70	-28.47
African Rainbow Cap.	AIL	577	565	2.12	-3.03	-15.15
Adcock Ingram	AIP	4820	4995	-3.50	-4.55	-4.46
Astral	ARL	21485	21338	0.69	7.66	24.44
Attacq	ATT	637	584	9.08	5.12	-20.28
Brait	BAT	399	380	5.00	-4.55	-11.73
Blue Label Telecoms	BLU	615	625	-1.60	-12.14	20.83
Bytes Technology	BYI	8326	7957	4.64	-7.95	-31.78
City Lodge Hotels	CLH	420	425	-1.18	2.94	-22.37
Curro	COH	1082	1021	5.97	-1.28	-13.09
Cashbuild	CSB	21950	21800	0.69	-11.33	-15.89
Datatec	DTC	4218	4355	-3.15	-4.38	9.56
Emira	EMI	1011	1020	-0.88	-0.69	6.42
Equites Property Fund	EQU	1798	1791	0.39	-5.67	-21.79
Famous Brands	FBR	5719	5761	-0.73	-12.29	-26.83
Gindrod	GND	1130	1087	3.96	18.32	128.28
Hci	HCI	18750	18112	3.52	20.19	153.38
Hudaco	HDC	13817	13907	-0.65	-6.01	4.79
Hammerson Plc	HMN	436	423	3.07	-14.84	-39.36
Hyprop	HYP	3680	3588	2.56	0.55	-1.21
Investec Prop Fund	IPF	963	987	-2.43	-9.58	-22.34
Jse	JSE	10517	10582	-0.61	-6.84	-6.10
Kap Industrial	KAP	455	468	-2.78	7.31	4.12
Karoo	KRO	41400	41300	0.24	-7.90	-22.62
Psg Konsult	KST	1163	1106	5.15	-3.08	-13.47
Liberty Two Degrees	L2D	479	438	9.36	20.05	0.84
Libstar	LBR	570	555	2.70	7.34	-14.29
Lighthouse Capital	LTE	671	662	1.36	-9.69	-25.44
Massmart	MSM	5975	6000	-0.42	71.40	-1.53
Mas Real Estate Inc	MSP	2014	2015	-0.05	-4.73	-4.23
Metair	MTA	2699	2651	1.81	5.59	-1.85
Motus	MTH	13013	12962	0.39	14.89	18.20
M&R Hold	MUR	826	850	-2.82	-20.73	-42.12
Oceana	OCE	5403	5410	-0.13	10.72	-2.72
Omnia	OMN	6158	6200	-0.68	-0.18	-3.80
Pan African Resource	PAN	357	353	1.13	-12.71	-7.03
Raubex	RBX	3529	3511	0.51	0.11	-11.33
Rhodes Food Pty	RFG	1000	1000	0.00	-11.50	-18.57
Reunert	RLO	4539	4567	-0.61	12.94	-14.36
Sa Corp Real Estate	SAC	210	210	0.00	-0.94	-10.64
Steinhoff International N.V.	SNH	231	220	5.00	-9.41	-53.98
Super	SPG	2828	2900	-2.48	3.14	-16.85
Stor-Age Property Reit	SSS	1335	1315	1.52	-4.64	-8.25
Stenprop	STP	3385	3355	0.89	-4.65	-21.28
Sun Int	SUI	3180	3138	1.34	17.87	11.78
Transaction Capital	TCP	3692	3783	-2.41	-3.63	-18.01
Tsogo Sun Hotels	TGO	362	362	0.00	0.56	2.84
Tsogo Sun Gaming	TSG	1260	1230	2.44	16.34	8.15
Vukile	VKE	1334	1342	-0.60	-5.86	7.84
Wbhovco	WBO	8300	8219	0.99	-9.36	-26.73
Zeder Investments	ZED	185	185	0.00	6.32	-42.90

10-YEAR BOND YIELD | SELECTED ITEMS (*BASIS POINT CHANGE)

COMPANY	YIELD	1D%	1M%	YTD%
United States	3.35	---	52	198
United Kingdom	3.09	---	105	236
Germany	1.63	---	68	196
Japan	0.23	---	8	20
South African 10Y	10.51	18	25	166

GLOBAL INTEREST RATES | SELECTED ITEMS

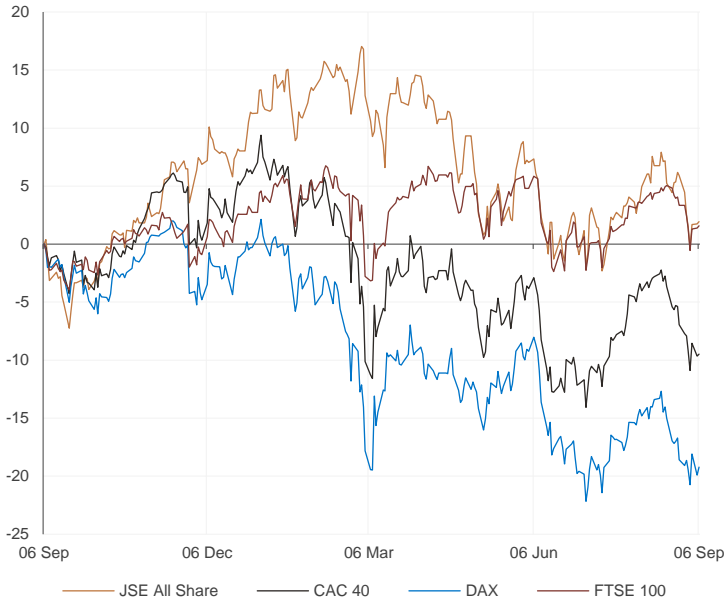
REGION	DATE CHANGED	CURRENT RATE
United States	27 Jul 2022	2.25%-2.50%
United Kingdom	04 Aug 2022	1.75%
European	21 Jul 2022	0.50%
SA Repo Rate	21 Jul 2022	5.50%
SA Prime Rate	21 Jul 2022	9.00%

SOUTH AFRICAN 10-YEAR BOND
2021 v 2022



GLOBAL MARKETS

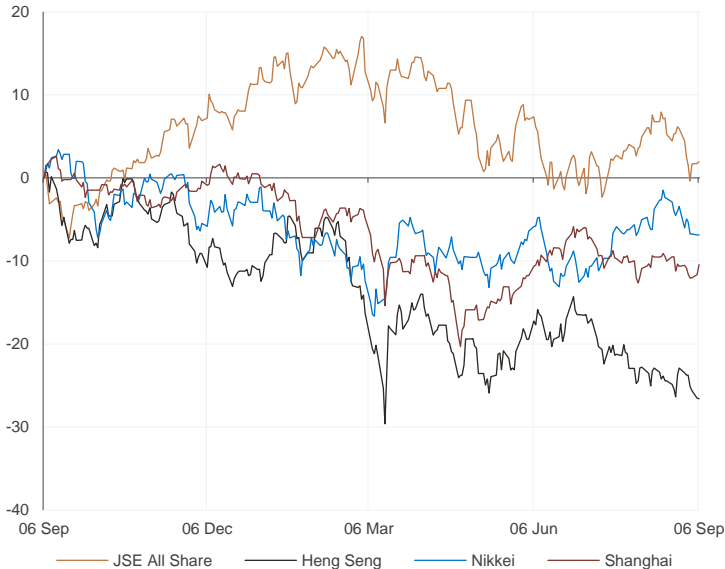
European Indices v JSE All Share Normalised Performances



US Indices v JSE All Share Normalised Performances



Asian Indices v JSE All Share Normalised Performances



EUROPEAN MARKET COMMENTARY

SELECTED HEADLINES

European markets close marginally higher yesterday as investors assess economic challenges. The pan-European Stoxx 600 ended the day up 0.2%, with most sectors and all major bourses in the black. Retail stocks were the best performing of the day, closing up 1.7%. Oil and gas stocks were the outliers, ending the day down 2.5% as Brent crude prices retreated following a modest supply cut from OPEC+ and previously surging gas prices pulled back. Focus this week will be on the European Central Bank meeting on Thursday, where it is expected to deliver a 75-basis-point interest rate hike.

EUROPEAN INDICES	CLOSE	PREVIOUS	1D%	5D%	1M%	YTD%
CAC 40	6104.61	6093.22	0.19	-1.70	-5.68	-14.66
DAX 30	12871.44	12760.78	0.87	-0.69	-5.18	-18.97
Eurostoxx 50	3500.14	3490.01	0.29	-1.73	-6.05	-18.57
FTSE	7300.44	7287.43	0.18	-0.83	-1.87	-1.14

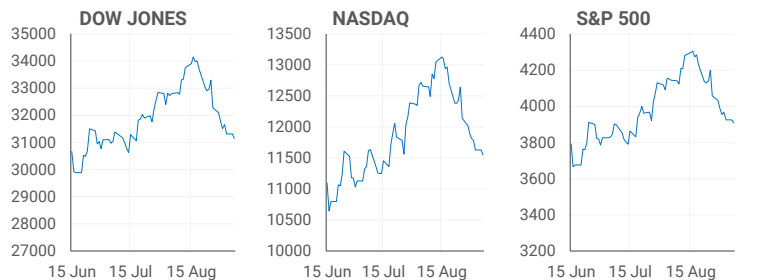


AMERICAN MARKET COMMENTARY

SELECTED HEADLINES

U.S. stocks erased early gains and turned lower yesterday as investors looked toward more economic data and the Fed's move later this month. Stocks were moving lower after U.S. workers returned from a long Labour Day weekend, with many returning to offices for the first time since the pandemic began. Later this month, Federal Reserve policy makers meet to decide the next step on interest rates. Consumer price data will come out before then, however, and the Fed releases the periodic Beige Book reporting on business and economic conditions from its regional banks later this week.

AMERICAN INDICES	CLOSE	PREVIOUS	1D%	5D%	1M%	YTD%
Dow Jones	31145.30	31318.44	-0.55	-2.03	-5.05	-14.29
Nasdaq	11544.91	11630.86	-0.74	-2.85	-8.79	-26.21
S&P 500	3908.19	3924.26	-0.41	-1.96	-5.72	-18.00
Dollar Index	110.59	109.78	0.74	1.65	3.91	15.58
US VIX	26.91	25.99	3.54	2.67	27.23	56.27



ASIAN MARKET COMMENTARY

SELECTED HEADLINES

Markets in the Asia-Pacific traded lower today as investors anticipate the Federal Reserve to give its summary on current economic conditions, also known as the Beige Book. China will today release its trade data for the month of August. Economists estimate exports rose 12.8% from a year earlier, after growing 18% in July. China has reopened roads leading to the epicentre of Monday's magnitude 6.8 earthquake in southwestern Sichuan province.

ASIAN INDICES	CLOSE	PREVIOUS	1D%	5D%	1M%	YTD%
Hang Seng	19202.73	19225.70	-0.12	-3.74	-4.95	-17.93
Nikkei 225	27626.51	27619.61	0.02	-2.02	-1.95	-4.05
Shanghai	3243.45	3199.91	1.36	0.50	0.51	-10.89



COMMODITIES & CURRENCIES

BRENT CRUDE (\$) last 100 days



PLATINUM (\$) last 100 days



COMMODITY MARKET COMMENTARY

SELECTED HEADLINES

Gold prices slipped from a one-week high hit earlier in the session, as the dollar and Treasury yields climbed amid expectations for aggressive monetary policy tightening by major central banks. Meanwhile oil prices fell this morning as Covid-19 lockdowns in top crude importer China and expectations of further interest rate hikes fanned concerns of a global economic recession and lower fuel demand growth.

COMMODITY	LAST	CLOSE	%CHG	1D%	5D%	YTD%
Brent Crude (\$)	92.90	95.23	-2.45	-7.16	-1.60	19.19
Gold (\$)	1701.78	1710.09	-0.49	-1.31	-4.16	-6.97
Palladium	2011.00	2037.01	-1.28	-3.85	-5.61	6.00
Platinum (\$)	856.73	849.50	0.85	0.67	-8.62	-11.59
Silver	18.01	18.17	-0.90	-2.32	-9.52	-22.76

GOLD (\$) last 100 days



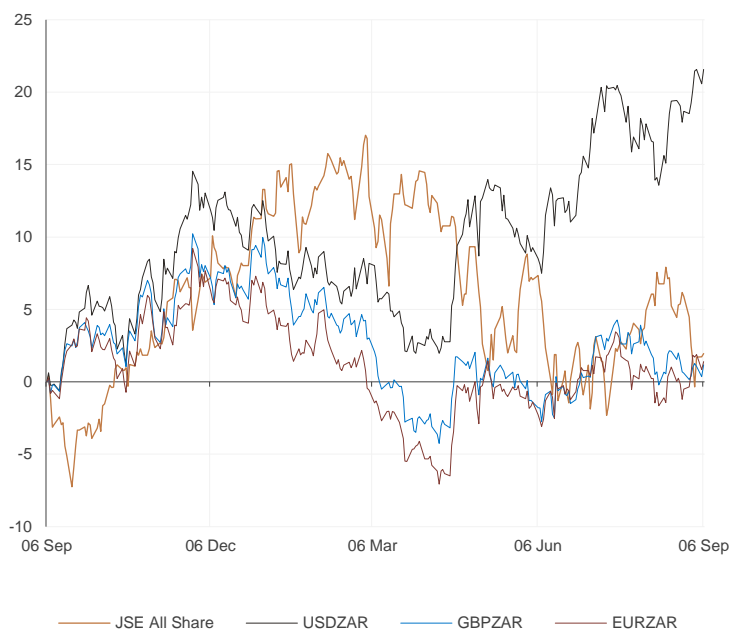
COMMODITY	LAST	CLOSE	%CHG	1D%	5D%	YTD%
USDZAR	17.30	17.16	0.82	1.94	3.18	8.51
GBPZAR	19.93	19.77	0.82	0.78	-1.59	-7.54
EURZAR	17.14	17.04	0.55	0.77	0.34	-5.50
AUDZAR	11.65	11.67	-0.11	0.20	0.46	0.54
EURUSD	0.99	0.99	-0.27	-1.10	-2.72	-12.91
USDJPY	142.79	140.60	1.56	2.88	5.77	24.06
GBPUSD	1.15	1.15	0.02	-1.17	-4.58	-14.85

CURRENCY MARKET COMMENTARY

SELECTED HEADLINES

The rand weakened yesterday as the dollar marched higher after a report on the U.S. services industry reinforced the view that the economy was not in recession. At the close of the session, the rand was trading around R17.30 to the dollar, 0.82% softer. In other news, the dollar hit a 24-year peak against the yen and reached new highs versus the Australian and New Zealand dollars after U.S. economic data reinforced the view that the Federal Reserve will continue aggressive policy tightening.

Currencies v JSE All Share Normalised Performances



USDZAR last 100 days



EURUSD last 100 days



Sources : JSE, Moneyweb, CNBC, BBC, CNN

Disclaimer: This note is prepared for Sanlam Private Wealth (Pty) Ltd, by K2013143132 (Pty) Ltd trading as Thompson Green. Thompson Green is an independent company contracted to Sanlam Private Wealth (Pty) Ltd. The views expressed in this note are those of Thompson Green and/or its analysts and do not necessarily reflect the views of Sanlam Private Wealth (Pty) Ltd, Sanlam or any officer or agent thereof. K2013143132 (Pty) Ltd trading as Thompson Green is a research house and not a registered broker, financial advisor or financial service provider. Our editors and customer service teams also do not give personal investment advice. The information in this document is general advice only and may not be appropriate to your particular investment objectives, financial situation or particular needs, so before investing or if you have any doubts about your personal situation, you should seek professional advice from a stockbroker or independent financial adviser authorised by the Financial Services Board. We research, recommend and articulate thoroughly, but disclaim all liability for any inaccuracies or omissions in this publication and any trading or investment losses you may incur. Should you outperform, we will take the credit. Thompson Green also acts as an introducer of business to Authorised Financial Services Providers. All accounts opened are held by the Authorised Registered Financial Services Provider and not Thompson Green. The information in this email is confidential and may be legally privileged. It is intended solely for the addressee. Access to this email by anyone else is unauthorised. If you are not the intended recipient, any disclosure, copying, distribution or any action taken or omitted to be taken in reliance on it, is prohibited and may be unlawful. If you are not the intended recipient please return the message to the sender and delete it from your records.