

GLOBAL OVERVIEW | SELECTED INDICES

SOUTH AFRICAN INDICES						
	CLOSE	PREVIOUS	1D%	5D%	1M%	YTD%
All Share	66715.83	67538.77	-1.22	-0.80	-4.03	-9.49
Top 40	60174.38	60943.44	-1.26	-0.92	-4.66	-10.26
Financial 15	14793.72	15198.45	-2.66	-0.49	-5.62	-0.04
Industrial 25	82502.70	82750.28	-0.30	-1.14	-2.86	-13.57
Resource 10	59942.44	60966.05	-1.68	-0.62	-6.40	-15.54
Mid Cap	75221.16	76274.60	-1.38	-0.03	-1.49	-5.62
Small Cap	69574.77	70352.79	-1.11	1.13	3.07	3.06
Banks	9416.90	9686.02	-2.78	-0.46	-5.29	6.73
General Retailers	6869.36	7082.12	-3.00	-0.38	-1.80	-8.69
Property (J253) - TR	1513.52	1512.45	0.07	0.03	-4.96	-10.11
AMERICAN INDICES						
	CLOSE	PREVIOUS	1D%	5D%	1M%	YTD%
Dow Jones	31581.28	31145.30	1.40	0.22	-3.73	-13.09
Nasdaq	11791.90	11544.91	2.14	-0.21	-6.84	-24.63
S&P 500	3979.87	3908.19	1.83	0.63	-3.99	-16.50
Dollar Index	109.55	110.21	-0.60	0.85	2.93	14.49
US VIX	24.64	26.91	-8.44	-4.75	16.50	43.09
EUROPEAN INDICES						
	CLOSE	PREVIOUS	1D%	5D%	1M%	YTD%
CAC 40	6105.92	6104.61	0.02	-0.31	-5.66	-14.64
DAX 30	12915.97	12871.44	0.35	0.63	-4.85	-18.69
Eurostoxx 50	3502.09	3500.14	0.06	-0.43	-5.99	-18.53
FTSE	7237.83	7300.44	-0.86	-0.64	-2.71	-1.99
ASIAN INDICES						
	CLOSE	PREVIOUS	1D%	5D%	1M%	YTD%
Hang Seng	19044.30	19202.73	-0.83	-4.56	-5.73	-18.61
Nikkei 225	27430.30	27626.51	-0.71	-2.35	-2.65	-4.73
Shanghai	3246.29	3243.45	0.09	1.38	0.60	-10.81
EARLY MORNING INDICATORS						
	LAST	CLOSE	%CHG	1D%	5D%	YTD%
Tencent	304.20	311.60	-2.37	-0.83	-4.77	-31.47
BHP Billiton	3677	3627	1.38	-2.68	-10.67	-12.60

INTERNATIONAL ECONOMIC CALENDAR | SELECTED EVENTS

TIME	AREA	TODAY'S EVENTS & RELEASES	PERIOD	EXP.	PREV.
10:00	RSA	Consumer Confidence	Q3	-35	-25
11:00	RSA	Current Account	Q2	R115B	R143B
11:30	RSA	SACCI Business Confidence	Aug	112	110.3
13:00	RSA	Manufacturing Production YoY	Jul	4.70%	-3.50%
13:00	RSA	Manufacturing Production MoM	Jul	0.30%	-1.50%
TIME	AREA	PREVIOUS SESSION'S RELEASES	PERIOD	EXP.	ACT.
08:00	RSA	Foreign Exchange Reserves	Aug	\$59B	\$59.76B
11:00	EUR	Final Employment Change q/q	Q2	0.30%	0.40%
11:00	EUR	Revised GDP q/q	Q2	0.60%	0.80%
11:00	GBP	Monetary Policy Report Hearings	---	---	---
14:30	USD	Trade Balance	Jul	-70.2B	-70.6B

LOCAL EQUITIES | JSE ALL SHARE COMPANIES

BEST ONE-DAY & PERFORMERS						
	CODE	CLOSE	1D%	5D%	YTD%	
Tharisa plc	THA	2200	8.64	4.76	-18.52	
Karoo000 Ltd	KRO	43500	5.07	2.47	-18.69	
Investec Property Fund Ltd	IPF	999	3.74	-2.44	-19.44	
The Foschini Group Limited	TFG	13632	3.74	7.20	10.02	
Shoprite Holdings Ltd	SHP	22500	3.39	-3.32	7.72	
WORST ONE-DAY & PERFORMERS						
	CODE	CLOSE	1D%	5D%	YTD%	
PSG Group Ltd	PSG	2250	-74.39	-75.06	-74.79	
Discovery Ltd	DSY	11070	-10.11	-9.88	-22.89	
PSG Konsult Limited	KST	1060	-8.86	-7.02	-21.13	
Investec plc	INP	7752	-6.58	-6.05	-10.58	
Sasol Limited	SOL	31292	-6.57	-5.70	20.82	

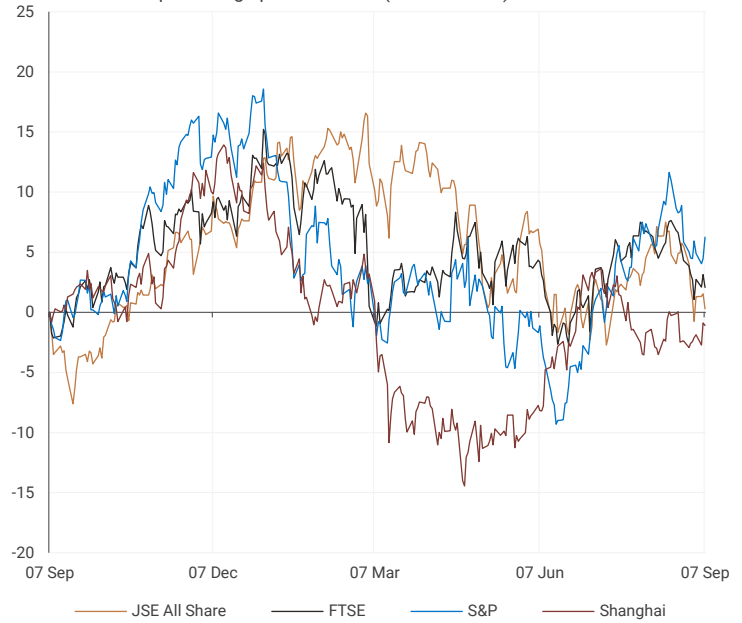
DIVIDEND DATA

COMPANY	CODE	DIVIDEND	COMPANY	CODE	DIVIDEND
Spur Corporation	SUR	78 ZARc	Sibanye Stillwater	SSW	138 ZARc
Italtile	ITE	27 ZARc	Standard Bank	SBK	515 ZARc
Merafe Resources	MRF	12 ZARc	Woolworths Holdings	WHL	149 ZARc
ADvTECH	ADH	23 ZAR	Adcock Ingram Holdings	AIP	109 ZARc
Sun International	SUI	88 ZARc	Absa Group	ABG	650 ZARc

Last date to trade 13 Sep

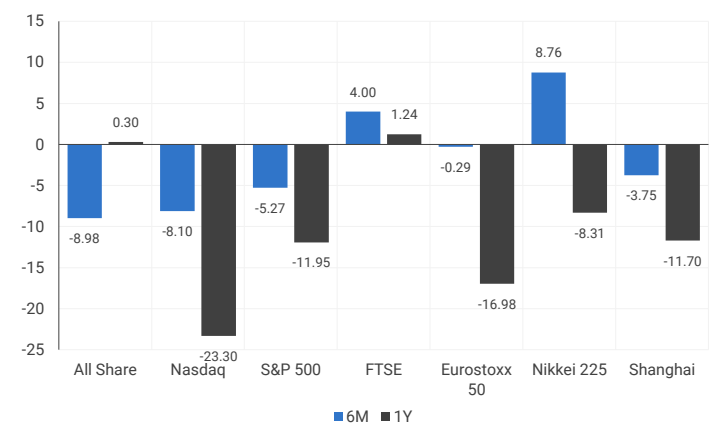
INTERNATIONAL INDICES

normalised percentage performances (in rand terms)

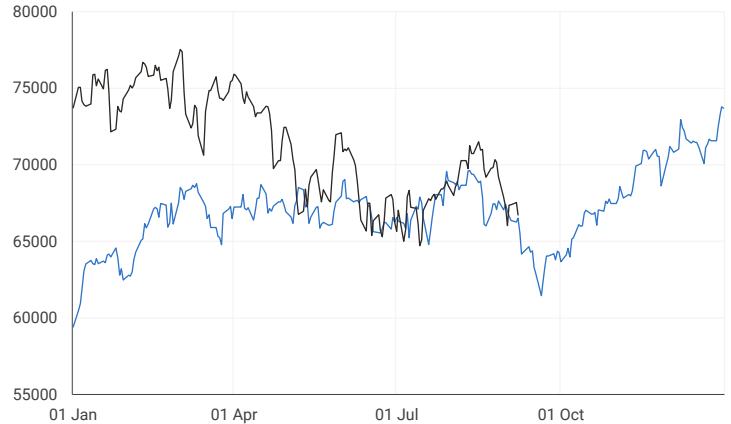


INTERNATIONAL INDICES

6-month & 1-year percentage performances



JSE ALL SHARE INDEX
2021 V 2022



LOCAL EQUITIES | JSE LARGE CAP COMPANIES (CENTS PER SHARE)

COMPANY	CLOSE	PREVIOUS	1D%	5D%	1M%	YTD%
Absa Group	17980	18297	-1.73	1.00	0.99	17.86
Anglo	54800	55750	-1.70	-0.64	-7.69	-15.91
Angloplat	121193	119924	1.06	1.10	-4.50	-33.29
Anglo Gold Ashanti	23240	23433	-0.82	1.21	-5.83	-29.30
Anheuser-Busch Inbev	84552	84600	-0.06	1.33	-4.98	-12.17
Bhp Group Plc	42140	43169	-2.38	-4.08	-8.08	-11.17
Bid Corp	31718	33025	-3.96	-2.42	3.24	-2.83
British American Tobacco Plc	69103	69463	-0.52	0.90	4.75	17.94
Compagnie Financiere	18798	18771	0.14	-2.52	-5.11	-22.12
Capitec	209737	214196	-2.08	2.63	1.45	2.82
Discovery	11070	12315	-10.11	-9.88	-13.45	-22.89
Firststrand	6345	6553	-3.17	-1.12	-5.59	4.36
Goldfields	13919	13952	-0.24	0.33	-10.84	-20.07
Glencore Plc	9376	9643	-2.77	4.47	-1.82	15.54
Implats	18521	18390	0.71	2.68	1.93	-17.68
Kumba Iron Ore	36837	37963	-2.97	-3.19	-19.03	-19.94
Mondi Plc	28930	29467	-1.82	-1.08	-4.36	-26.79
Mtn Group	12999	13024	-0.19	4.62	-10.32	-23.85
Naspers -N	237400	237661	-0.11	-2.13	-3.10	-3.96
Prosus Nv	100017	99673	0.35	-5.95	-8.52	-23.64
Stanbank	15088	15497	-2.64	-1.53	-9.44	7.76
Shoprite	22500	21763	3.39	-3.32	-0.92	7.72
Sanlam	5376	5482	-1.93	0.83	-3.85	-9.43
Sasol	31292	33494	-6.57	-5.70	-8.68	20.82
Sibanye Stillwater	3871	3858	0.34	0.57	-7.17	-21.16
Vodacom Group	12902	12916	-0.11	2.28	-6.24	-4.16

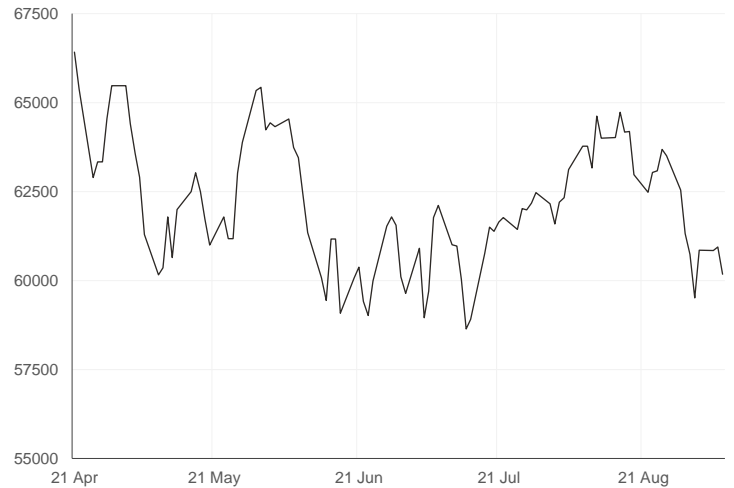
SOUTH AFRICAN MARKET COMMENTARY

SELECTED HEADLINES

On the Johannesburg Stock Exchange (JSE), the Top-40 index ended 1.26% lower, while the broader All-Share dropped 1.22% by the close of the session. In company news, shares in Discovery fell over 10% after the insurer said it would withhold its ordinary share dividend. Meanwhile Tiger Brands shares were down more than 6% after the food producer said it was recalling its Purity Essentials baby powder products as a precautionary measure after traces of asbestos were detected in test samples.

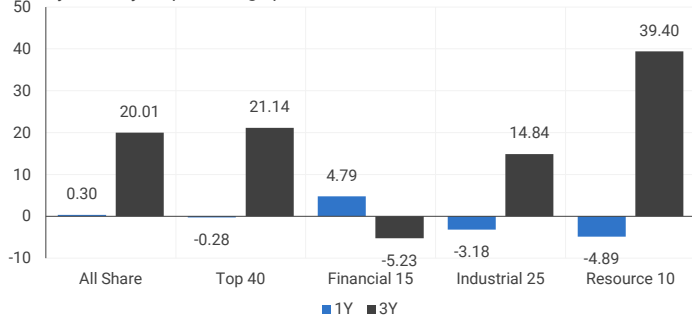
JSE TOP 40 INDEX

last 100 days



LOCAL INDICES

1-year & 3-year percentage performances



LOCAL INDICES

Normalised % performances comparison



EXPECTED COMPANY REPORTING SCHEDULE

COMPANY	CODE	RELEASE	DATE
Sanlam	SLM	Interim	08 Sep
Bell Equipment	BEL	Interim	09 Sep
Sasfin Holdings	SFN	Final	09 Sep
City Lodge Hotels	CLH	Final	10 Sep
Caxton and CTP Publishers and Printers	CAT	Final	12 Sep

BANK AND OTHER SELECTED PREFERENCE SHARES

COMPANY	CODE	CODE	CLEAN YIELD	APPROX. NEXT LDT
Investec Limited	INPR	9039	7.66	07 Dec 2022
Standard Bank	SBPP	9304	7.74	07 Sep 2022
Absa	ABSP	92995	7.07	14 Sep 2022
Capitec	CPIP	9408	7.48	14 Sep 2022
Steinhoff	SHFF	7700	9.94	19 Oct 2022
Grindrod	GNDP	9525	8.69	20 Sep 2022
Netcare	NTCP	8500	9.10	02 Nov 2022
Discovery	DSBP	9680	9.82	20 Sep 2022
Invicta	IVTP	9700	10.16	23 Nov 2022

SENS ANNOUNCEMENTS

SELECTED RELEASES

THE FOSCHINI GROUP LIMITED – Trading update Sales

In a trading update announced yesterday, group retail turnover grew by 21.6% despite continued pressure on consumers. The Foschini Group Africa generated retail turnover growth of 14.7% compared to the same period last year, underpinned by 17.3% retail turnover growth in clothing and 15.7% retail turnover growth in homeware. Womenswear like-for-like retail turnover and full price retail turnover grew 21.5% and 37.5% respectively for the 23 weeks. Group online retail turnover grew by 5.1% for the period, contributing 9.2% to total group retail turnover. Meanwhile the Tapestry Home Brands ("Tapestry") acquisition was implemented with an effective date of 1 August 2022 but has not yet been incorporated into these results. The Group continues to invest in its key strategic initiatives to further strengthen its differentiated business model. It has made progress on its key strategic objectives and its speciality brand business portfolio which remains very well positioned for further organic and inorganic growth. A specific focus will be the integration of the Tapestry business to extract the maximum value from our investment.

Move|3.74% Open|13246c Close|13632c High|13733c Low|12980c

DISCOVERY LIMITED - Results

For the year ended 30 June 2022, normalised operating profit increased by 45% to R9 384 million and normalised headline earnings increased by 71% to R5 816 million. Core new business annualised premium income (API) increased by 6% to R21 710 million, with particularly strong growth from the SA and UK composites, and persistency that continued to exceed expectations in all businesses. Continued strong progress in Discovery Bank saw the investment in new initiatives at 18% of normalised operating profit, compared with 24% in the previous period. Normalised headline earnings per share (basic) increased by 71% to 885.5 cents per share and headline earnings per share (basic) increased by 74% to 792.4 cents per share, both positively impacted by mark-to-market foreign currency gains. Within headline earnings, the negative effect of higher long-term interest rates in SA was partly offset by the benefit of higher long-term interest rates in the UK. The directors declared a final gross cash dividend of 382.26 cents (305.80 cents net of dividend withholding tax) per B preference share for the period 1 January 2022 to 30 June 2022, payable from the income reserves of the company. A dividend withholding tax of 20% will be applicable to all shareholders who are not exempt. Last day of trade to receive a dividend will be Tuesday, 20 September 2022, while the payment date will be Monday, 26 September 2022.

Move|-10.11% Open|12175c Close|11070c High|12175c Low|11020c

LOCAL EQUITIES | JSE MID CAP COMPANIES (CENTS PER SHARE)

COMPANY	CODE	CLOSE	PREVIOUS	1D%	1M%	YTD%
Aspen	APN	14322	14437	-0.80	-2.52	-36.19
African Rainbow	ARI	24890	24576	1.28	8.23	7.65
Avi	AVI	7207	7246	-0.54	5.71	-2.48
Barworld	BAW	8700	8814	-1.29	-4.96	-42.14
Bidvest Group	BVT	21517	22000	-2.20	1.79	13.58
Capco	CCO	2349	2350	-0.04	-20.10	-35.16
Clicks Group	CLS	29985	30220	-0.78	6.54	-4.97
Coronation	CML	3011	3058	-1.54	-9.88	-42.69
Dis-Chem	DCP	3422	3480	-1.67	4.74	-3.39
Distell Group	DGH	17300	17275	0.14	0.07	2.49
Drdgold	DRD	945	952	-0.74	-12.98	-28.41
Exxaro Resources	EXX	21634	22345	-3.18	10.51	41.52
Fortress Reit A	FFA	988	980	0.82	-17.11	-20.96
Fortress Reit B	FFB	447	436	2.52	11.19	37.54
Growthpoint	GRT	1280	1279	0.08	-4.76	-16.72
Harmony Gold	HAR	4075	4104	-0.71	-27.01	-38.81
Investec	INL	7693	8111	-5.15	-15.80	-12.13
Investec	INP	7752	8298	-6.58	-15.68	-10.58
Italtile	ITE	1512	1545	-2.14	6.63	-10.00
Life Healthcare	LHC	2025	2025	0.00	-1.17	-15.73
Multichoice Group	MCG	11063	11700	-5.44	-7.18	-9.34
Mediclinic Int.	MEI	9803	9835	-0.33	-2.36	44.03
Montauk Renewables	MKR	29600	29539	0.21	28.42	72.09
Mr Price Group	MRP	19307	19500	-0.99	5.45	-3.22
Momentum	MTM	1622	1655	-1.99	5.53	-14.41
Ninety One Plc	N91	3851	3944	-2.36	-7.32	-33.00
Nedbank	NED	20394	20784	-1.88	-6.65	16.52
Northam Platinum	NHM	15689	15711	-0.14	-9.29	-25.11
Nepi Rockcastle Plc	NRP	8954	8969	-0.17	-4.44	-15.53
Netcare	NTC	1406	1427	-1.47	-8.64	-11.46
Ninety One	NY1	3787	3861	-1.92	-7.11	-32.99
Old Mutual	OMU	1040	1051	-1.05	-9.01	-20.61
Pik N Pay	PIK	6007	6087	-1.31	6.49	14.48
Pepkor	PPH	2075	2108	-1.57	4.11	-5.21
Psg	PSG	2250	8785	-74.39	-74.43	-74.79
Quilter Plc	QLT	2043	2053	-0.49	-16.82	-35.51
Rbplapts	RBP	14581	14546	0.24	0.56	-6.72
Redefine	RDF	376	377	-0.27	-5.29	-14.55
Remgro	REM	13146	13279	-1.00	-4.02	0.24
Resilient Reit	RES	5253	5480	-4.14	-6.89	-12.08
Rand Merchant Inv	RMI	2718	2749	-1.13	-1.16	30.10
Reinet Investments Sca	RNI	28453	28857	-1.40	-2.56	-0.52
Sappi	SAP	4380	4504	-2.75	-15.18	-4.07
Santam	SNT	24017	24530	-2.09	-1.79	-10.72
Spar	SPP	15290	15465	-1.13	13.04	-8.51
Sirius Real Estate	SRE	1584	1576	0.51	-16.98	-47.77
Tigebrands	TBS	15610	16673	-6.38	-1.08	-13.76
The Foschini Group	TFG	13632	13141	3.74	11.65	10.02
Thungela Resources	TGA	35899	37170	-3.42	33.29	324.64
Telkom	TKG	4774	4898	-2.53	13.13	-11.72
Truworths	TRU	5759	5702	1.00	12.92	10.22
Textainer	TXT	52000	52424	-0.81	-3.08	-9.57
Woolies	WHL	6242	6192	0.81	19.05	20.36

LOCAL EQUITIES | JSE SMALL CAP COMPANIES (CENTS PER SHARE)

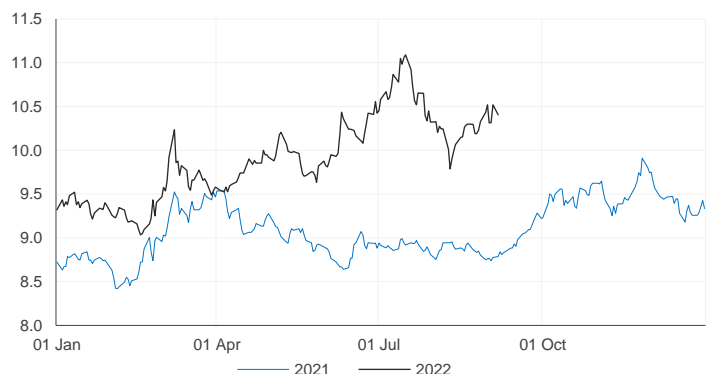
COMPANY	CODE	CLOSE	PREVIOUS	1D%	1M%	YTD%
Advtech	ADH	1680	1692	-0.71	1.27	-4.44
Altron	AEL	860	870	-1.15	6.17	-6.01
Aeci	AFE	7970	8201	-2.82	-10.50	-28.84
Alexander Forbes	AFH	473	490	-3.47	1.28	5.35
Afrimat	AFT	5021	5180	-3.07	-4.18	-12.57
Arrowhead Prop.	AHB	310	304	1.97	-2.82	-27.06
African Rainbow Cap.	AIL	575	577	-0.35	-3.36	-15.44
Adcock Ingram	AIP	4969	4820	3.09	-1.60	-1.51
Astral	ARL	21466	21485	-0.09	7.57	24.33
Attacq	ATT	639	637	0.31	5.45	-20.03
Brait	BAT	400	399	0.25	-4.31	-11.50
Blue Label Telecoms	BLU	591	615	-3.90	-15.57	16.11
Bytes Technology	BYI	8521	8326	2.34	-5.79	-30.18
City Lodge Hotels	CLH	428	420	1.90	4.90	-20.89
Curro	COH	1011	1082	-6.56	-7.76	-18.80
Cashbuild	CSB	21360	21950	-2.69	-13.72	-18.15
Datatec	DTC	4200	4218	-0.43	-4.78	9.09
Emira	EMI	951	1011	-5.93	-6.58	0.11
Equites Property Fund	EQU	1790	1798	-0.44	-6.09	-22.14
Famous Brands	FBR	5818	5719	1.73	-10.77	-25.56
Gindrod	GND	1085	1130	-3.98	13.61	119.19
Hci	HCI	18500	18750	-1.33	18.59	150.00
Hudaco	HDC	13750	13817	-0.48	-6.46	4.29
Hammerson Plc	HMN	433	436	-0.69	-15.43	-39.78
Hyprop	HYP	3652	3680	-0.76	-0.22	-1.96
Investec Prop Fund	IPF	999	963	3.74	-6.20	-19.44
Jse	JSE	10610	10517	0.88	-6.01	-5.27
Kap Industrial	KAP	453	455	-0.44	6.84	3.66
Karooooo	KRO	43500	41400	5.07	-3.23	-18.69
Psg Konsult	KST	1060	1163	-8.86	-11.67	-21.13
Liberty Two Degrees	L2D	469	479	-2.09	17.54	-1.26
Libstar	LBR	575	570	0.88	8.29	-13.53
Lighthouse Capital	LTE	675	671	0.60	-9.15	-25.00
Massmart	MSM	5920	5975	-0.92	69.82	-2.44
Mas Real Estate Inc	MSP	1994	2014	-0.99	-5.68	-5.18
Metair	MTA	2651	2699	-1.78	3.72	-3.60
Motus	MTH	13049	13013	0.28	15.21	18.53
M&R Hold	MUR	793	826	-4.00	-23.90	-44.43
Oceana	OCE	5429	5403	0.48	11.25	-2.25
Omnia	OMN	6034	6158	-2.01	-2.19	-5.73
Pan African Resource	PAN	364	357	1.96	-11.00	-5.21
Raubex	RBX	3486	3529	-1.22	-1.11	-12.41
Rhodes Food Pty	RFG	1009	1000	0.90	-10.71	-17.83
Reunert	RLO	4529	4539	-0.22	12.69	-14.55
Sa Corp Real Estate	SAC	210	210	0.00	-0.94	-10.64
Steinhoff International N.V.	SNH	238	231	3.03	-6.67	-52.59
Super	SPG	2784	2828	-1.56	1.53	-18.14
Stor-Age Property Reit	SSS	1350	1335	1.12	-3.57	-7.22
Stenprop	STP	3354	3385	-0.92	-5.52	-22.00
Sun Int	SUI	3147	3180	-1.04	16.64	10.62
Transaction Capital	TCP	3650	3692	-1.14	-4.72	-18.94
Tsogo Sun Hotels	TGO	362	362	0.00	0.56	2.84
Tsogo Sun Gaming	TSG	1276	1260	1.27	17.82	9.53
Vukile	VKE	1324	1334	-0.75	-6.56	7.03
Wbhovco	WBO	8199	8300	-1.22	-10.46	-27.62
Zeder Investments	ZED	185	185	0.00	6.32	-42.90

10-YEAR BOND YIELD | SELECTED ITEMS (*BASIS POINT CHANGE)

COMPANY	YIELD	1D%	1M%	YTD%
United States	3.23	-3	47	189
United Kingdom	3.03	---	108	229
Germany	1.57	---	68	190
Japan	0.23	---	7	20
South African 10Y	10.38	---	12	155

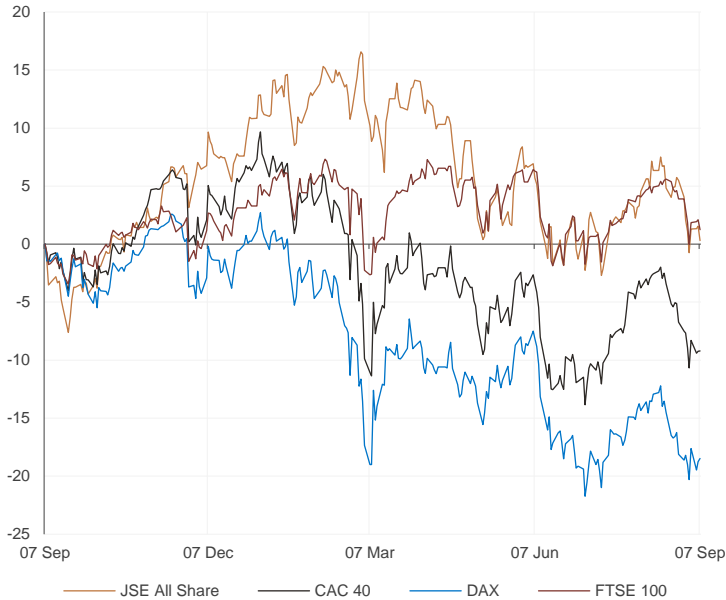
GLOBAL INTEREST RATES | SELECTED ITEMS

REGION	DATE CHANGED	CURRENT RATE
United States	27 Jul 2022	2.25%-2.50%
United Kingdom	04 Aug 2022	1.75%
European	21 Jul 2022	0.50%
SA Repo Rate	21 Jul 2022	5.50%
SA Prime Rate	21 Jul 2022	9.00%

SOUTH AFRICAN 10-YEAR BOND 2021 v 2022


GLOBAL MARKETS

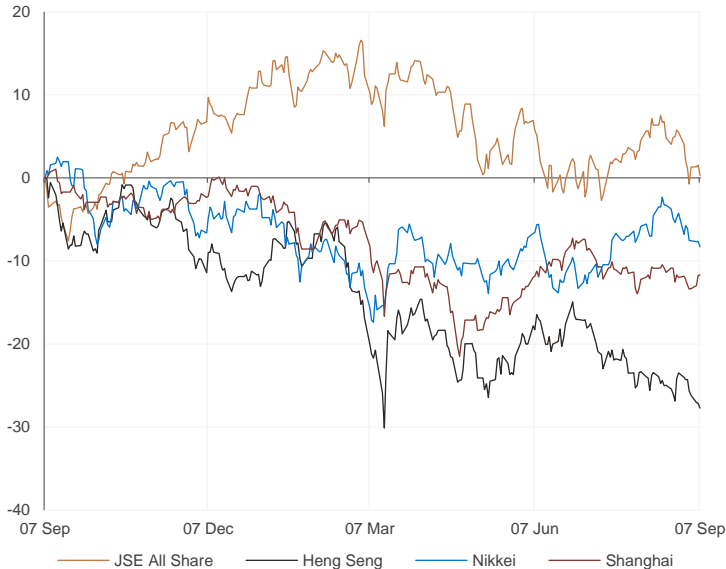
European Indices v JSE All Share Normalised Performances



US Indices v JSE All Share Normalised Performances



Asian Indices v JSE All Share Normalised Performances



EUROPEAN MARKET COMMENTARY

SELECTED HEADLINES

European markets closed lower yesterday as investors continued to dwell on the recessionary outlook in the region and as inflationary pressures continue to grow. The pan-European Stoxx 600 ended the day down 0.4%, with oil & gas shedding 2.9% to lead losses. Utilities stocks were the best performing of the day, closing up 2.1%. Meanwhile the European Central Bank is expected to frontload a series of rate hikes and sacrifice growth in the region in a bid to tame inflation of 9.7%, which is forecast to rise further.

EUROPEAN INDICES	CLOSE	PREVIOUS	1D%	5D%	1M%	YTD%
CAC 40	6105.92	6104.61	0.02	-0.31	-5.66	-14.64
DAX 30	12915.97	12871.44	0.35	0.63	-4.85	-18.69
Eurostoxx 50	3502.09	3500.14	0.06	-0.43	-5.99	-18.53
FTSE	7237.83	7300.44	-0.86	-0.64	-2.71	-1.99



AMERICAN MARKET COMMENTARY

SELECTED HEADLINES

U.S. stocks rose yesterday, trying to shake off a three-week slide, cooling investor concerns about continued high inflation. Stocks rallied as Fed Vice Chair Lael Brainard reaffirmed that the central bank would do what it takes to stifle inflation, while also noting the risks of going too far. Many traders decided to focus on this latter point from her speech. Yesterday, the Federal Reserve gave its summary on current economic conditions, known as the Beige Book. The report showed that economic activity was little changed in many regions across the U.S., and that growth outlooks remain weak.

AMERICAN INDICES	CLOSE	PREVIOUS	1D%	5D%	1M%	YTD%
Dow Jones	31581.28	31145.30	1.40	0.22	-3.73	-13.09
Nasdaq	11791.90	11544.91	2.14	-0.21	-6.84	-24.63
S&P 500	3979.87	3908.19	1.83	0.63	-3.99	-16.50
Dollar Index	109.55	110.21	-0.60	0.85	2.93	14.49
US VIX	24.64	26.91	-8.44	-4.75	16.50	43.09



ASIAN MARKET COMMENTARY

SELECTED HEADLINES

Markets in the Asia-Pacific were mixed this morning following Wall Street's solid rebound rally overnight in the best day since August 10 for all three averages. Japan's economy grew an annualized 3.5% in the second quarter, beating estimated growth of 2.9%. The Japanese economy grew 0.9% quarter-on-quarter, official data showed. Meanwhile in China, several cities including the tech hub of Shenzhen have tightened Covid controls in the last few weeks after reporting new local infections.

ASIAN INDICES	CLOSE	PREVIOUS	1D%	5D%	1M%	YTD%
Hang Seng	19044.30	19202.73	-0.83	-4.56	-5.73	-18.61
Nikkei 225	27430.30	27626.51	-0.71	-2.35	-2.65	-4.73
Shanghai	3246.29	3243.45	0.09	1.38	0.60	-10.81



COMMODITIES & CURRENCIES

BRENT CRUDE (\$) last 100 days



PLATINUM (\$) last 100 days



COMMODITY MARKET COMMENTARY

SELECTED HEADLINES

Gold prices were subdued this morning and under pressure as the dollar hovered near a recent peak amid a hawkish U.S. Federal Reserve, while cautious investors also awaited the European Central Bank's rate action due later in the day. Meanwhile platinum was 0.3% lower and palladium dropped 0.7%. In other news oil prices climbed today, paring some of their steep losses in the previous session, as the potential for an energy standoff between European nations and Russia overshadowed fears of recession and rising inflation.

COMMODITY	LAST	CLOSE	%CHG	1D%	5D%	YTD%
Brent Crude (\$)	87.66	92.90	-5.64	-9.16	-7.15	12.47
Gold (\$)	1719.05	1701.78	1.02	0.46	-3.19	-6.03
Palladium	2045.09	2011.00	1.70	-1.98	-4.01	7.79
Platinum (\$)	870.50	856.73	1.61	2.59	-7.15	-10.17
Silver	18.47	18.01	2.57	2.65	-7.19	-20.78

GOLD (\$) last 100 days



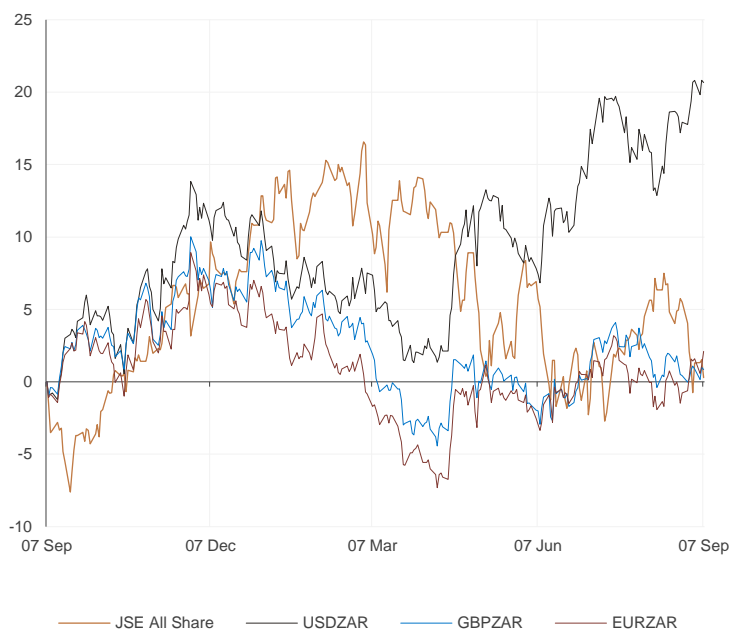
COMMODITY	LAST	CLOSE	%CHG	1D%	5D%	YTD%
USDZAR	17.28	17.30	-0.12	1.07	3.05	8.38
GBPZAR	19.90	19.93	-0.16	0.02	-1.75	-7.68
EURZAR	17.30	17.14	0.97	0.53	1.31	-4.58
AUDZAR	11.71	11.65	0.50	-0.03	0.97	1.05
EURUSD	1.00	0.99	0.99	-0.52	-1.76	-12.05
USDJPY	143.73	142.79	0.65	3.42	6.46	24.87
GBPUSD	1.15	1.15	0.13	-0.77	-4.46	-14.74

CURRENCY MARKET COMMENTARY

SELECTED HEADLINES

The rand strengthened yesterday, as the dollar fell despite the U.S. economy's showing signs of resilience. At the close of the day, the rand was trading around R17.28 to the dollar, 0.12% firmer. Meanwhile, the dollar resumed its rise in Asia this morning after falling back from a two-decade high overnight, as investors pondered the path of global monetary policy ahead of a European Central Bank rate decision and comments from Federal Reserve Chair Jerome Powell later in the day.

Currencies v JSE All Share Normalised Performances



USDZAR last 100 days



EURUSD last 100 days



Sources : JSE, Moneyweb, CNBC, BBC, CNN

Disclaimer: This note is prepared for Sanlam Private Wealth (Pty) Ltd, by K2013143132 (Pty) Ltd trading as Thompson Green. Thompson Green is an independent company contracted to Sanlam Private Wealth (Pty) Ltd. The views expressed in this note are those of Thompson Green and/or its analysts and do not necessarily reflect the views of Sanlam Private Wealth (Pty) Ltd, Sanlam or any other agent thereof. K2013143132 (Pty) Ltd trading as Thompson Green is a research house and not a registered broker, financial advisor or financial service provider. Our editors and customer service teams also do not give personal investment advice. The information in this document is general advice only and may not be appropriate to your particular investment objectives, financial situation or particular needs, so before investing or if you have any doubts about your personal situation, you should seek professional advice from a stockbroker or independent financial adviser authorised by the Financial Services Board. We research our recommendations and articles thoroughly, but disclaim all liability for any inaccuracies or omissions in this publication and any trading or investment losses you may incur. Should you outperform, we will take the credit. Thompson Green also acts as an introducer of business to Authorised Financial Services Providers. All accounts opened are held by the Authorised Registered Financial Services Provider and not Thompson Green. The information in this email is confidential and may be legally privileged. It is intended solely for the addressee. Access to this email by anyone else is unauthorised. If you are not the intended recipient, any disclosure, copying, distribution or any action taken or omitted to be taken in reliance on it, is prohibited and may be unlawful. If you are not the intended recipient please return the message to the sender and delete it from your records.