

GLOBAL OVERVIEW | SELECTED INDICES

SOUTH AFRICAN INDICES						
	CLOSE	PREVIOUS	1D%	5D%	1M%	YTD%
All Share	68708.48	67260.23	2.15	1.97	-2.22	-6.78
Top 40	62126.76	60637.95	2.46	2.09	-2.58	-7.35
Financial 15	15003.20	14766.29	1.60	-0.42	-4.69	1.38
Industrial 25	84682.12	83303.97	1.65	1.59	-1.34	-11.29
Resource 10	63309.82	60715.53	4.27	5.04	-2.67	-10.80
Mid Cap	77263.24	76396.78	1.13	1.72	-0.09	-3.06
Small Cap	69896.14	70115.98	-0.31	1.41	2.63	3.54
Banks	9520.62	9322.41	2.13	-0.85	-4.46	7.91
General Retailers	6988.43	6932.59	0.81	0.53	-0.84	-7.11
Property (J253) - TR	1542.02	1531.48	0.69	2.84	-3.75	-8.42
AMERICAN INDICES						
	CLOSE	PREVIOUS	1D%	5D%	1M%	YTD%
Dow Jones	32151.71	31774.52	1.19	2.66	-1.90	-11.52
Nasdaq	12112.31	11862.13	2.11	4.14	-3.05	-22.58
S&P 500	4067.36	4006.18	1.53	3.65	-1.34	-14.66
Dollar Index	108.97	109.65	-0.62	-0.55	2.63	13.88
US VIX	22.79	23.61	-3.47	-10.52	4.69	32.35
EUROPEAN INDICES						
	CLOSE	PREVIOUS	1D%	5D%	1M%	YTD%
CAC 40	6212.33	6125.90	1.41	0.73	-4.28	-13.15
DAX 30	13088.21	12904.32	1.43	0.29	-3.30	-17.61
Eurostoxx 50	3570.04	3512.38	1.64	0.72	-3.91	-16.95
FTSE	7351.07	7262.06	1.23	0.96	-1.83	-0.45
ASIAN INDICES						
	CLOSE	PREVIOUS	1D%	5D%	1M%	YTD%
Hang Seng	19362.25	18854.62	2.69	-0.46	-3.21	-17.25
Nikkei 225	28214.75	28065.28	0.53	2.04	0.77	-2.00
Shanghai	3262.05	3235.59	0.82	2.37	0.45	-10.38
EARLY MORNING INDICATORS						
	LAST	CLOSE	%CHG	1D%	5D%	YTD%
Tencent	307.00	307.00	0.00	1.72	-6.57	-32.48
BHP Billiton	3939	3809	3.41	3.17	3.67	-8.22

INTERNATIONAL ECONOMIC CALENDAR | SELECTED EVENTS

TIME	AREA	TODAY'S EVENTS & RELEASES	PERIOD	EXP.	PREV.
08:00	GBP	GDP m/m	Jul	0.30%	-0.60%
08:00	GBP	Construction Output m/m	Jul	0.40%	-1.40%
08:00	GBP	Goods Trade Balance	Jul	-22.2B	-22.8B
08:00	GBP	Industrial Production m/m	Jul	0.40%	-0.90%
08:00	GBP	Manufacturing Production m/m	Jul	0.30%	-1.60%
TIME	AREA	PREVIOUS SESSION'S RELEASES	PERIOD	EXP.	ACT.
10:30	GBP	Consumer Inflation Expectations	---	---	---
11:30	EUR	ECB President Lagarde Speaks	---	---	---
AD	EUR	EU Economic Summit	---	---	---
AD	EUR	Eurogroup Meetings	---	---	---
16:00	USD	Final Wholesale Inventories m/m	Jul	0.80%	0.60%

LOCAL EQUITIES | JSE ALL SHARE COMPANIES

BEST ONE-DAY & PERFORMERS						
	CODE	CLOSE	1D%	5D%	YTD%	
Anglo American Plat Ltd	AMS	123509	6.86	4.94	-32.02	
Anglo American plc	AGL	58823	6.02	7.27	-9.74	
Kumba Iron Ore Ltd	KIO	39000	5.99	2.81	-15.23	
BHP Group Plc	BHG	45764	5.10	3.78	-3.53	
Northam Platinum Hldgs Ltd	NPH	16626	4.43	5.61	-20.64	
WORST ONE-DAY & PERFORMERS						
	CODE	CLOSE	1D%	5D%	YTD%	
African Rainbow Cap Inv	AIL	551	-8.62	-8.17	-18.97	
Steinhoff Int Hldgs N.V.	SNH	223	-8.61	0.00	-55.58	
Bytes Technology Group	BYI	8201	-6.82	0.64	-32.81	
RFG Holdings Limited	RFG	953	-5.55	-6.29	-22.39	
PSG Konsult Limited	KST	1060	-3.64	0.95	-21.13	

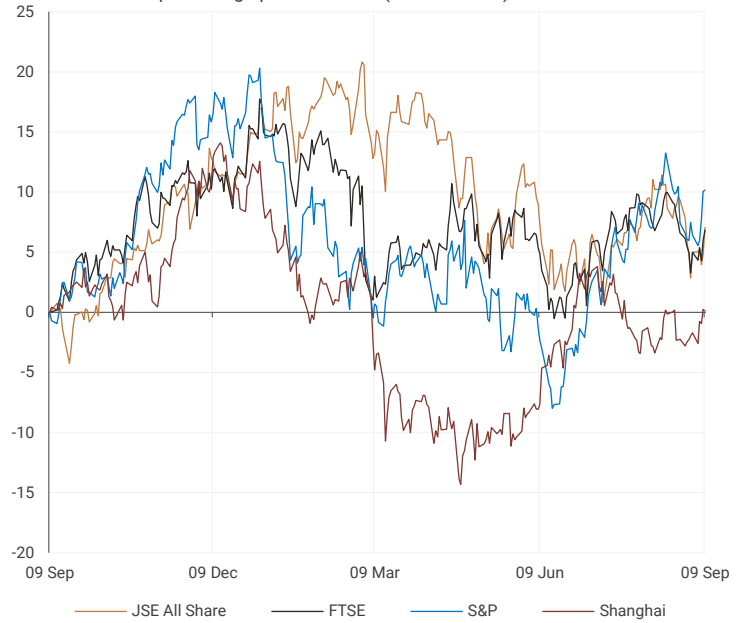
DIVIDEND DATA

COMPANY	CODE	DIVIDEND	COMPANY	CODE	DIVIDEND
Spur Corporation	SUR	78 ZARc	Sibanye Stillwater	SSW	138 ZARc
Italtile	ITE	27 ZARc	Standard Bank	SBK	515 ZARc
Merafe Resources	MRF	12 ZARc	Woolworths Holdings	WHL	149 ZARc
ADvTECH	ADH	23 ZAR	Adcock Ingram Holdings	AIP	109 ZARc
Sun International	SUI	88 ZARc	Absa Group	ABG	650 ZARc

Last date to trade 13 Sep

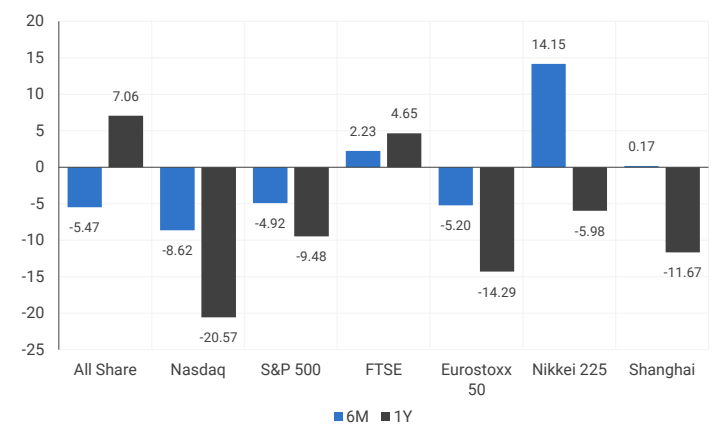
INTERNATIONAL INDICES

normalised percentage performances (in rand terms)

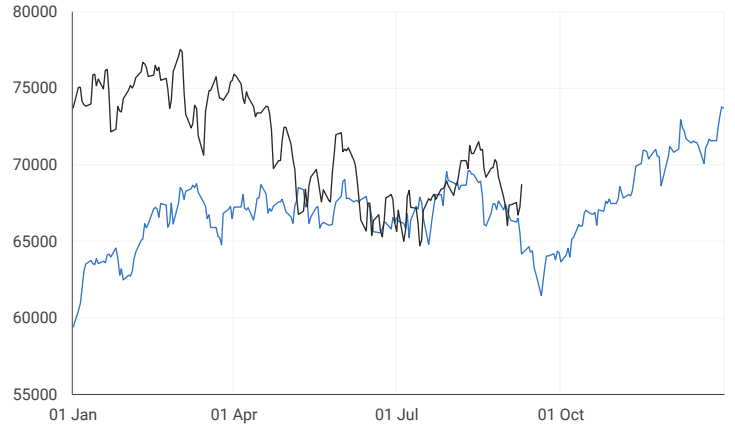


INTERNATIONAL INDICES

6-month & 1-year percentage performances



JSE ALL SHARE INDEX
2021 V 2022



LOCAL EQUITIES | JSE LARGE CAP COMPANIES (CENTS PER SHARE)

COMPANY	CLOSE	PREVIOUS	1D%	5D%	1M%	YTD%
Absa Group	18751	18258	2.70	3.92	4.61	22.92
Anglo	58823	55485	6.02	7.27	-1.06	-9.74
Angloplat	123509	115585	6.86	4.94	-6.13	-32.02
Anglo Gold Ashanti	24018	23390	2.68	3.20	-8.77	-26.93
Anheuser-Busch Inbev	86052	86210	-0.18	2.31	-4.34	-10.61
Bhp Group Plc	45764	43542	5.10	3.78	1.46	-3.53
Bid Corp	31670	31528	0.45	-3.84	2.88	-2.98
British American Tobacco Plc	70156	69930	0.32	1.56	6.27	19.74
Compagnie Financiere	19230	18780	2.40	1.68	-3.90	-20.33
Capitec	190432	190000	0.23	-9.04	-7.77	-6.64
Discovery	11000	11033	-0.30	-10.28	-14.31	-23.38
Firststrand	6520	6356	2.58	0.35	-3.08	7.24
Goldfields	14361	13886	3.42	1.68	-10.69	-17.53
Glencore Plc	9799	9413	4.10	8.00	4.76	20.75
Implats	19180	19163	0.09	7.64	0.81	-14.76
Kumba Iron Ore	39000	36797	5.99	2.81	-16.87	-15.23
Mondi Plc	29385	29020	1.26	0.64	-3.75	-25.64
Mtn Group	13379	13043	2.58	5.77	-8.37	-21.63
Naspers -N	249177	244191	2.04	2.73	-0.11	0.80
Prosus Nv	104099	102325	1.73	-0.67	-4.68	-20.52
Stanbank	15561	15156	2.67	0.38	-7.25	11.14
Shoprite	22440	22561	-0.54	-3.29	-2.15	7.43
Sanlam	5505	5466	0.71	1.74	-2.57	-7.26
Sasol	32221	31530	2.19	-4.52	-6.06	24.41
Sibanye Stillwater	4146	4028	2.93	8.51	-5.02	-15.56
Vodacom Group	13047	12911	1.05	1.53	-5.20	-3.08

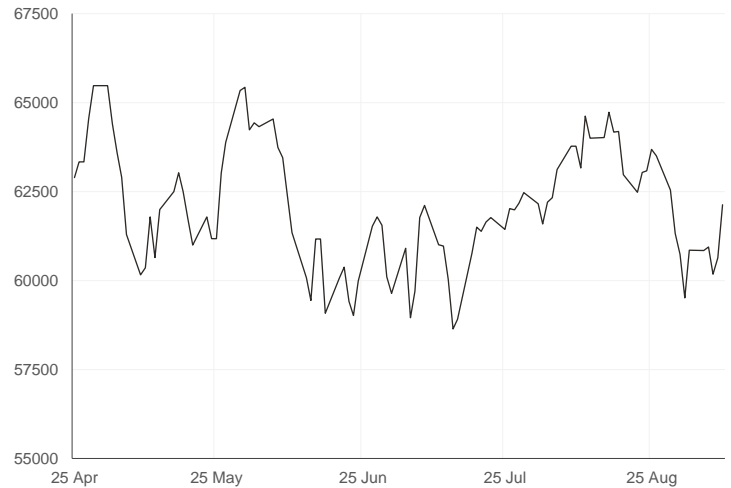
SOUTH AFRICAN MARKET COMMENTARY

SELECTED HEADLINES

On the Johannesburg Stock Exchange (JSE), the Top-40 index rose 2.46%, while the broader All-Share index was up 2.15%, driven mostly by mining and banking shares. Among gainers, miners Anglo American Platinum, Anglo American PLC, Kumba Iron Ore and BHP Group Ltd were up around 5-6%. Overall, the mining index closed 2.68% higher. In other news, the Competition Commission approved Heineken's purchase of wine and cider company Distell Group as long as the merged entity invests more than R10 billion over five years in the country.

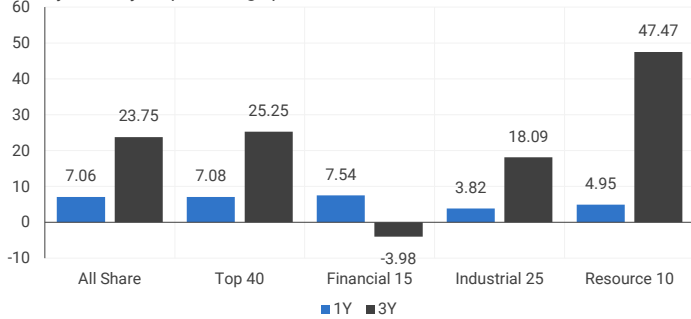
JSE TOP 40 INDEX

last 100 days



LOCAL INDICES

1-year & 3-year percentage performances



LOCAL INDICES

Normalised % performances comparison



EXPECTED COMPANY REPORTING SCHEDULE

COMPANY	CODE	RELEASE	DATE
Caxton and CTP Publishers and Printers	CAT	Final	12 Sep
Metrofile Holdings	MFL	Final	13 Sep
Wilson Bayly Holmes - Ovcon	WBO	Final	13 Sep
Mustek	MST	Final	13 Sep
Libstar Holdings	LBR	Interim	13 Sep

BANK AND OTHER SELECTED PREFERENCE SHARES

COMPANY	CODE	CODE	CLEAN YIELD	APPROX. NEXT LDT
Investec Limited	INPR	9000	7.66	07 Dec 2022
Standard Bank	SBPP	9350	7.75	07 Sep 2022
Absa	ABSP	93001	7.08	14 Sep 2022
Capitec	CPIP	9408	7.48	14 Sep 2022
Steinhoff	SHFF	7700	9.95	19 Oct 2022
Grindrod	GNDP	9525	8.70	20 Sep 2022
Netcare	NTCP	8500	9.11	02 Nov 2022
Discovery	DSBP	9637	9.83	20 Sep 2022
Invicta	IVTP	9700	10.18	23 Nov 2022

SENS ANNOUNCEMENTS

SELECTED RELEASES

FIRSTSTRAND LIMITED – Further trading statement for the year ended 30 June 2022

Earnings per share (EPS) for the period is expected to increase between 20% and 25% compared to the prior year (476.9 cents per share), resulting in a range of between 572.2 cents and 596.1 cents per share. Headline EPS for the period is expected to increase between 20% and 25% compared to the prior year (480.5 cents per share), resulting in a range of between 576.6 cents and 600.6 cents per share. Normalised EPS for the period is expected to increase between 20% and 25% compared to the prior year (473.3 cents per share), resulting in a range of between 567.9 cents per share and 591.6 cents per share.

Move | 2.58% Open | 6455c Close | 6520c High | 6605c Low | 6408c

CAXTON AND CTP PUBLISHERS AND PRINTERS LIMITED – Reviewed provisional group results

Profit before depreciation and amortisation increased by R264.1 million (46.8%) to R828.0 million compared to R563.9 million in the prior year. Profit after depreciation and amortisation increased by R279.9 million (90.2%) to R590.3 million compared to R310.4 million in the prior year. Revenue grew strongly by R758.9 million (14.5%) from R5 220.4 million to R5 979.3 million, reflecting volume increases across all operations, especially in the second half of the financial year. The group's profit before taxation was R686.2 million and the taxation charge was R142.4 million, resulting in profit after taxation of R543.8 million – representing earnings per share of 151.2 cents (prior year 148.1 cents which included the profit on sale of associates – Octotel (Pty) Ltd and RSA Web (Pty) Ltd of R305.2 million). The board has declared a dividend of 50.00 cents (2021: 50.0 cents) per ordinary share (gross) and a preference dividend of 410.00 cents (2021: 410.00 cents) per preference share (gross) for the year ended 30 June 2022.

Move | 5.63% Open | 974c Close | 994c High | 998c Low | 935c

LOCAL EQUITIES | JSE MID CAP COMPANIES (CENTS PER SHARE)

COMPANY	CODE	CLOSE	PREVIOUS	1D%	1M%	YTD%
Aspen	APN	15461	14818	4.34	3.14	-31.11
African Rainbow	ARI	26341	25300	4.11	10.76	13.92
Avi	AVI	7304	7357	-0.72	6.49	-1.16
Barworld	BAW	9183	9002	2.01	-2.54	-38.93
Bidvest Group	BVT	22190	21797	1.80	2.78	17.13
Capco	CCO	2355	2367	-0.51	-18.77	-35.00
Clicks Group	CLS	30463	30168	0.98	6.40	-3.45
Coronation	CML	3200	3114	2.76	-4.73	-39.09
Dis-Chem	DCP	3432	3419	0.38	2.42	-3.11
Distell Group	DGH	17656	17350	1.76	2.65	4.60
Drdgold	DRD	958	937	2.24	-12.27	-27.42
Exxaro Resources	EXX	23105	22219	3.99	16.81	51.14
Fortress Reit A	FFA	985	985	0.00	-17.57	-21.20
Fortress Reit B	FFB	438	437	0.23	8.42	34.77
Growthpoint	GRT	1310	1294	1.24	-3.53	-14.77
Harmony Gold	HAR	3819	3762	1.52	-34.30	-42.66
Investec	INL	7954	7820	1.71	-13.06	-9.15
Investec	INP	8042	7900	1.80	-12.69	-7.23
Italtile	ITE	1500	1521	-1.38	2.74	-10.71
Life Healthcare	LHC	2010	2019	-0.45	-3.41	-16.35
Multichoice Group	MCG	11182	11125	0.51	-7.03	-8.37
Mediclinic Int.	MEI	9855	9912	-0.58	-1.14	44.80
Montauk Renewables	MKR	31404	31418	-0.04	36.59	82.58
Mr Price Group	MRP	19668	19337	1.71	4.67	-1.41
Momentum	MTM	1683	1664	1.14	7.88	-11.19
Ninety One Plc	N91	4054	3950	2.63	-3.25	-29.47
Nedbank	NED	21200	20776	2.04	-2.51	21.13
Northam Platinum	NHM	16626	15921	4.43	-9.65	-20.64
Nepi Rockcastle Plc	NRP	9130	9089	0.45	-3.65	-13.87
Netcare	NTC	1439	1437	0.14	-8.52	-9.38
Ninety One	NY1	3982	3892	2.31	-2.28	-29.53
Old Mutual	OMU	1070	1067	0.28	-7.04	-18.32
Pik N Pay	PIK	6010	6075	-1.07	5.88	14.54
Pepkor	PPH	2150	2102	2.28	5.50	-1.78
Psg	PSG	2260	2260	0.00	-74.75	-74.68
Quilter Plc	QLT	2117	2091	1.24	-12.01	-33.18
Rbplapts	RBP	15000	14928	0.48	0.83	-4.04
Redefine	RDF	399	390	2.31	-0.25	-9.32
Remgro	REM	13409	13385	0.18	-3.88	2.24
Resilient Reit	RES	5236	5285	-0.93	-7.65	-12.37
Rand Merchant Inv	RMI	2781	2770	0.40	-0.11	33.12
Reinet Investments Sca	RNI	29695	29694	0.00	1.00	3.82
Sappi	SAP	4450	4411	0.88	-14.54	-2.54
Santam	SNT	24401	24180	0.91	-3.71	-9.29
Spar	SPP	15452	15568	-0.75	11.82	-7.54
Sirius Real Estate	SRE	1620	1600	1.25	-16.06	-46.59
Tigebrands	TBS	15765	16140	-2.32	-2.21	-12.90
The Foschini Group	TFG	13741	13616	0.92	10.58	10.90
Thungela Resources	TGA	34894	34847	0.13	30.25	312.75
Telkom	TKG	4885	4854	0.64	13.50	-9.67
Truworths	TRU	5946	5906	0.68	14.24	13.80
Textainer	TXT	53000	51924	2.07	-1.85	-7.83
Woolies	WHL	6444	6354	1.42	20.90	24.26

LOCAL EQUITIES | JSE SMALL CAP COMPANIES (CENTS PER SHARE)

COMPANY	CODE	CLOSE	PREVIOUS	1D%	1M%	YTD%
Advtech	ADH	1750	1722	1.63	4.73	-0.46
Altron	AEL	879	885	-0.68	14.01	-3.93
Aeci	AFE	8305	7978	4.10	-6.18	-25.85
Alexander Forbes	AFH	470	480	-2.08	-5.81	4.68
Afrimat	AFT	5008	5075	-1.32	-5.33	-12.80
Arrowhead Prop.	AHB	323	319	1.25	-1.22	-24.00
African Rainbow Cap.	AIL	551	603	-8.62	-8.17	-18.97
Adcock Ingram	AIP	4950	4900	1.02	-4.61	-1.88
Astral	ARL	21605	22031	-1.93	7.47	25.14
Attacq	ATT	646	640	0.94	6.25	-19.15
Brait	BAT	387	395	-2.03	-7.42	-14.38
Blue Label Telecoms	BLU	588	604	-2.65	-16.83	15.52
Bytes Technology	BYI	8201	8801	-6.82	-7.90	-32.81
City Lodge Hotels	CLH	429	431	-0.46	5.93	-20.70
Curro	COH	988	994	-0.60	-10.59	-20.64
Cashbuild	CSB	20908	20933	-0.12	-16.84	-19.89
Datatec	DTC	4300	4300	0.00	-2.27	11.69
Emira	EMI	950	960	-1.04	-6.77	0.00
Equites Property Fund	EQU	1801	1790	0.61	-4.91	-21.66
Famous Brands	FBR	5920	6018	-1.63	-10.57	-24.26
Gindrod	GND	1064	1070	-0.56	7.69	114.95
Hci	HCI	18950	19000	-0.26	18.36	156.08
Hudaco	HDC	13701	13715	-0.10	-6.95	3.91
Hammerson Plc	HMN	432	435	-0.69	-15.95	-39.92
Hyprop	HYP	3698	3689	0.24	-0.48	-0.72
Investec Prop Fund	IPF	1074	1034	3.87	1.90	-13.39
Jse	JSE	10595	10673	-0.73	-8.24	-5.40
Kap Industrial	KAP	467	467	0.00	8.60	6.86
Karooooo	KRO	43000	43000	0.00	-1.40	-19.63
Psg Konsult	KST	1060	1100	-3.64	-10.55	-21.13
Liberty Two Degrees	L2D	490	475	3.16	27.27	3.16
Libstar	LBR	565	565	0.00	5.61	-15.04
Lighthouse Capital	LTE	660	676	-2.37	-12.00	-26.67
Massmart	MSM	5995	5956	0.65	62.03	-1.20
Mas Real Estate Inc	MSP	2026	2039	-0.64	-3.75	-3.66
Metair	MTA	2650	2630	0.76	-1.41	-3.64
Motus	MTH	13253	13509	-1.90	15.91	20.38
M&R Hold	MUR	774	793	-2.40	-29.12	-45.76
Oceana	OCE	5414	5350	1.20	9.37	-2.52
Omnia	OMN	6220	6133	1.42	-1.25	-2.83
Pan African Resource	PAN	372	386	-3.63	-9.71	-3.13
Raubex	RBX	3488	3550	-1.75	-2.46	-12.36
Rhodes Food Pty	RFG	953	1009	-5.55	-13.36	-22.39
Reunert	RLO	4657	4510	3.26	8.05	-12.13
Sa Corp Real Estate	SAC	211	211	0.00	0.00	-10.21
Steinhoff International N.V.	SNH	223	244	-8.61	-14.23	-55.58
Super	SPG	2828	2812	0.57	2.09	-16.85
Stor-Age Property Reit	SSS	1360	1360	0.00	-1.09	-6.53
Stenprop	STP	3312	3311	0.03	-5.64	-22.98
Sun Int	SUI	3136	3220	-2.61	14.04	10.23
Transaction Capital	TCP	3724	3695	0.78	-5.15	-17.30
Tsogo Sun Hotels	TGO	84	84	0.54	-10.16	-76.14
Tsogo Sun Gaming	TSG	1260	1282	-1.72	14.75	8.15
Vukile	VKE	1322	1310	0.92	-7.03	6.87
Wbhovco	WBO	8010	7920	1.14	-12.93	-29.29
Zeder Investments	ZED	186	185	0.54	6.90	-42.59

10-YEAR BOND YIELD | SELECTED ITEMS (*BASIS POINT CHANGE)

COMPANY	YIELD	1D%	1M%	YTD%
United States	3.34	3	50	199
United Kingdom	3.09	---	98	233
Germany	1.69	---	71	203
Japan	0.24	---	5	20
South African 10Y	10.31	---	29	145

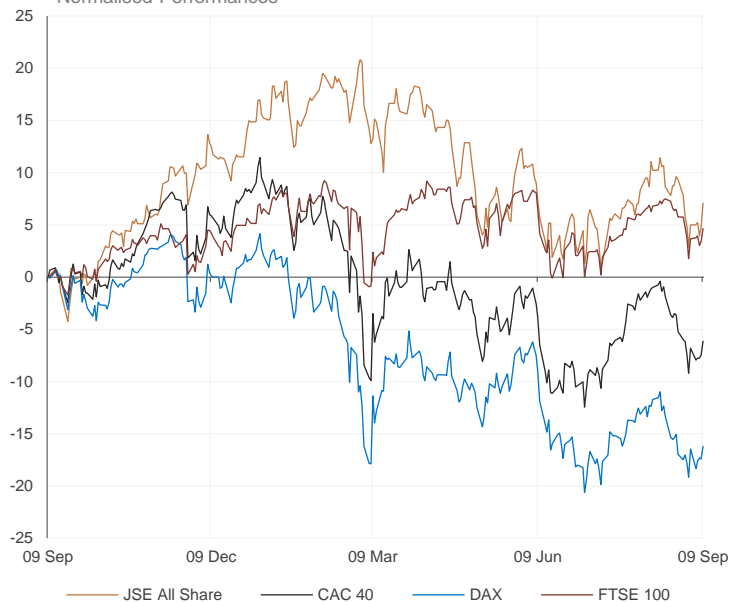
GLOBAL INTEREST RATES | SELECTED ITEMS

REGION	DATE CHANGED	CURRENT RATE
United States	27 Jul 2022	2.25%-2.50%
United Kingdom	04 Aug 2022	1.75%
European	08 Sep 2022	1.25%
SA Repo Rate	21 Jul 2022	5.50%
SA Prime Rate	21 Jul 2022	9.00%

SOUTH AFRICAN 10-YEAR BOND 2021 v 2022


GLOBAL MARKETS

European Indices v JSE All Share Normalised Performances



US Indices v JSE All Share Normalised Performances



Asian Indices v JSE All Share Normalised Performances



EUROPEAN MARKET COMMENTARY

SELECTED HEADLINES

European markets closed higher Friday, as investors reacted to a record rate hike by the European Central Bank and further comments from Federal Reserve Chair Jerome Powell. The pan-European Stoxx 600 ended up around 1.6%, with all sectors and major bourses in positive territory. Mining stocks were 3.2% higher to lead gains, while tech stocks were up 2.7%. The Bank of England on Friday said it would postpone its September Monetary Policy Committee meeting by a week as the country enters a period of national mourning.

EUROPEAN INDICES	CLOSE	PREVIOUS	1D%	5D%	1M%	YTD%
CAC 40	6212.33	6125.90	1.41	0.73	-4.28	-13.15
DAX 30	13088.21	12904.32	1.43	0.29	-3.30	-17.61
Eurostoxx 50	3570.04	3512.38	1.64	0.72	-3.91	-16.95
FTSE	7351.07	7262.06	1.23	0.96	-1.83	-0.45



AMERICAN MARKET COMMENTARY

SELECTED HEADLINES

U.S. stocks rallied Friday as Wall Street caps off a strong weekly performance, recovering from a Federal Reserve-induced slump. Shares of DocuSign surged more than 10% after the electronic agreements company reported an earnings beat. The company also issued a third-quarter revenue forecast that was above expectations. Stocks have been volatile recently as expectations of a 0.75 percentage point rate hike this month grew on Wall Street, after the Federal Reserve Chair Jerome Powell said again that he is "strongly committed" to bringing down inflation.

AMERICAN INDICES	CLOSE	PREVIOUS	1D%	5D%	1M%	YTD%
Dow Jones	32151.71	31774.52	1.19	2.66	-1.90	-11.52
Nasdaq	12112.31	11862.13	2.11	4.14	-3.05	-22.58
S&P 500	4067.36	4006.18	1.53	3.65	-1.34	-14.66
Dollar Index	108.97	109.65	-0.62	-0.55	2.63	13.88
US VIX	22.79	23.61	-3.47	-10.52	4.69	32.35



ASIAN MARKET COMMENTARY

SELECTED HEADLINES

Shares in the Asia-Pacific rose this morning on improved risk sentiment. Mainland China, Hong Kong and South Korea markets are closed for a holiday. The U.S. is set to release its consumer price index for August later in the week. Meanwhile, Travel stocks in Japan popped following local media reports that said the government is planning to resume individual travel, dropping its entry requirement of group tour bookings.

ASIAN INDICES	CLOSE	PREVIOUS	1D%	5D%	1M%	YTD%
Hang Seng	19362.25	18854.62	2.69	-0.46	-3.21	-17.25
Nikkei 225	28214.75	28065.28	0.53	2.04	0.77	-2.00
Shanghai	3262.05	3235.59	0.82	2.37	0.45	-10.38



COMMODITIES & CURRENCIES

BRENT CRUDE (\$) last 100 days



PLATINUM (\$) last 100 days



COMMODITY MARKET COMMENTARY

SELECTED HEADLINES

Gold prices ticked higher this morning as the dollar hovered near recent lows, with investors' focus being on a key U.S. inflation reading as it could influence the size of the Federal Reserve's next interest-rate hike. Oil prices slipped during Asian trade today as the prospect of further interest rate hikes in the United States and Europe to quell inflation and the imposition of strict COVID-19 restrictions in China overshadowed the global demand outlook.

COMMODITY	LAST	CLOSE	%CHG	1D%	5D%	YTD%
Brent Crude (\$)	92.20	88.39	4.31	-1.08	-4.36	18.30
Gold (\$)	1717.51	1708.91	0.50	0.28	-4.30	-6.11
Palladium	2180.00	2142.82	1.74	7.52	-1.96	14.91
Platinum (\$)	884.50	882.50	0.23	5.36	-5.70	-8.72
Silver	18.85	18.54	1.67	4.37	-8.21	-19.15

GOLD (\$) last 100 days



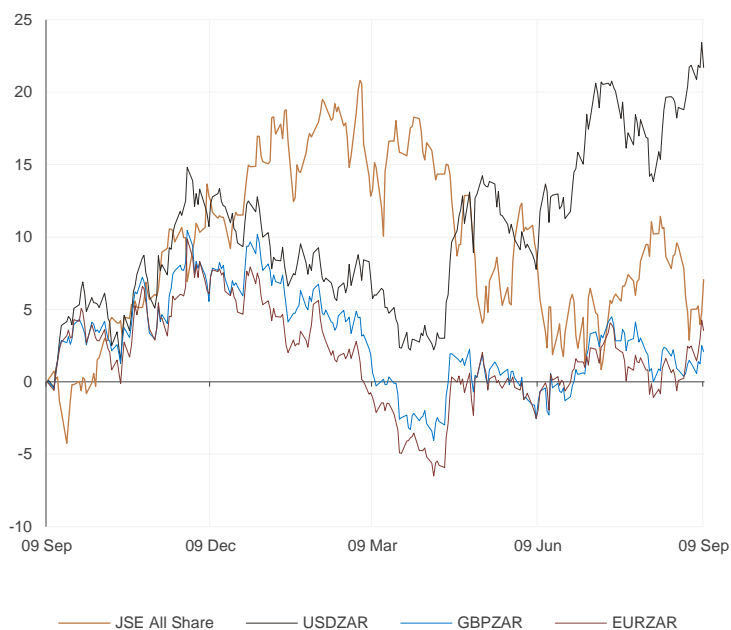
COMMODITY	LAST	CLOSE	%CHG	1D%	5D%	YTD%
USDZAR	17.28	17.52	-1.39	-0.12	4.19	8.39
GBPZAR	20.07	20.15	-0.40	0.79	0.22	-6.91
EURZAR	17.40	17.52	-0.68	1.04	2.70	-4.07
AUDZAR	11.85	11.83	0.20	0.59	2.61	2.25
EURUSD	1.00	1.00	0.50	0.91	-1.61	-11.65
USDJPY	142.58	144.11	-1.06	1.70	5.51	23.87
GBPUSD	1.16	1.15	0.72	0.69	-4.09	-14.34

CURRENCY MARKET COMMENTARY

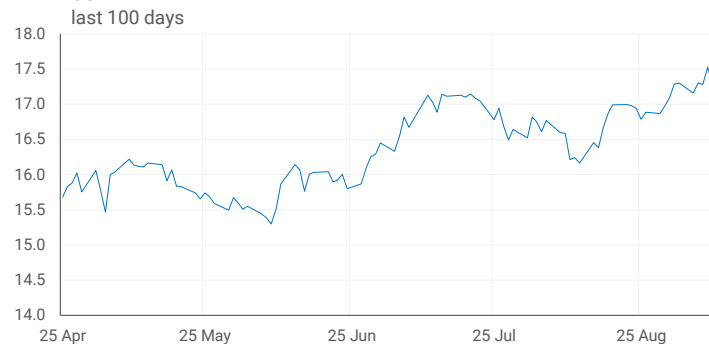
SELECTED HEADLINES

The rand strengthened on Friday after the dollar fell ahead of a U.S. inflation report that could determine the size of the Federal Reserve's rate hike at this month's policy meeting. At the close of the day, the rand was trading around R17.28 to the dollar, 1.39% firmer. Meanwhile, the euro jumped to a more than three-week peak versus the dollar this morning and sterling rose to the highest this month as European Central Bank officials pushed the case for further aggressive monetary tightening.

Currencies v JSE All Share Normalised Performances



USDZAR last 100 days



EURUSD last 100 days



Sources : JSE, Moneyweb, CNBC, BBC, CNN

Disclaimer: This note is prepared for Sanlam Private Wealth (Pty) Ltd, by K2013143132 (Pty) Ltd trading as Thompson Green. Thompson Green is an independent company contracted to Sanlam Private Wealth (Pty) Ltd. The views expressed in this note are those of Thompson Green and/or its analysts and do not necessarily reflect the views of Sanlam Private Wealth (Pty) Ltd, Sanlam or any officer or agent thereof. K2013143132 (Pty) Ltd trading as Thompson Green is a research house and not a registered broker, financial advisor or financial services provider. Our editors and customer service teams also do not give personal investment advice. The information in this document is general advice only and may not be appropriate to your particular investment objectives, financial situation or particular needs, so before investing or forming any doubt about your personal situation, you should seek professional advice from a stockbroker or independent financial adviser authorised by the Financial Services Board. We research our recommendations and articles thoroughly, but disclaim all liability for any inaccuracies or omissions in this publication and any trading or investment losses you may incur. Should you outperform, we will take the credit. Thompson Green also acts as an introducer of business to Authorised Financial Services Providers. All accounts opened are held by the Authorised Registered Financial Services Provider and not Thompson Green. The information in this email is confidential and may be legally privileged. It is intended solely for the addressee. Access to this email by anyone else is unauthorised. If you are not the intended recipient, any disclosure, copying, distribution or any action taken or omitted to be taken in reliance on it, is prohibited and may be unlawful. If you are not the intended recipient please return the message to the sender and delete it from your records.