

GLOBAL OVERVIEW | SELECTED INDICES

SOUTH AFRICAN INDICES						
	CLOSE	PREVIOUS	1D%	5D%	1M%	YTD%
All Share	67964.02	68273.71	-0.45	1.87	-3.91	-7.79
Top 40	61385.53	61706.56	-0.52	2.01	-4.08	-8.45
Financial 15	14607.56	14833.60	-1.52	-1.26	-9.04	-1.29
Industrial 25	84066.68	84291.01	-0.27	1.90	-2.90	-11.93
Resource 10	62729.13	62862.66	-0.21	4.65	-2.06	-11.62
Mid Cap	76493.70	76607.42	-0.15	1.69	-3.39	-4.02
Small Cap	70167.63	69926.75	0.34	0.85	0.85	3.94
Banks	9180.26	9378.13	-2.11	-2.51	-9.73	4.05
General Retailers	6826.84	6904.06	-1.12	-0.62	-4.73	-9.26
Property (J253) - TR	1539.54	1542.97	-0.22	1.72	-5.57	-8.56
AMERICAN INDICES						
	CLOSE	PREVIOUS	1D%	5D%	1M%	YTD%
Dow Jones	31135.09	31104.97	0.10	-1.41	-7.78	-14.32
Nasdaq	11719.68	11633.57	0.74	-0.61	-10.17	-25.09
S&P 500	3946.01	3932.69	0.34	-0.85	-7.81	-17.21
Dollar Index	109.75	109.91	-0.15	0.18	3.98	14.69
US VIX	26.16	27.27	-4.07	6.17	33.95	51.92
EUROPEAN INDICES						
	CLOSE	PREVIOUS	1D%	5D%	1M%	YTD%
CAC 40	6222.41	6245.69	-0.37	1.91	-5.06	-13.01
DAX 30	13028.00	13188.95	-1.22	0.87	-5.57	-17.98
Eurostoxx 50	3567.56	3586.18	-0.52	1.87	-5.54	-17.00
FTSE	7277.30	7385.86	-1.47	0.55	-2.98	-1.45
ASIAN INDICES						
	CLOSE	PREVIOUS	1D%	5D%	1M%	YTD%
Hang Seng	18847.10	19326.86	-2.48	-1.04	-6.58	-19.45
Nikkei 225	27818.62	28614.63	-2.78	1.42	-2.55	-3.38
Shanghai	3237.54	3263.80	-0.80	-0.27	-1.20	-11.05
EARLY MORNING INDICATORS						
	LAST	CLOSE	%CHG	1D%	5D%	YTD%
Tencent	300.00	299.60	0.13	-1.71	-3.85	-34.10
BHP Billiton	3874	3860	0.36	-1.78	6.42	-6.99

INTERNATIONAL ECONOMIC CALENDAR | SELECTED EVENTS

TIME	AREA	TODAY'S EVENTS & RELEASES	PERIOD	EXP.	PREV.
10:30	GBP	Consumer Inflation Expectations	---	---	4.60%
13:00	RSA	Building Permits YoY	Jul	12.00%	19.00%
14:30	USD	Core Retail Sales m/m	Aug	0.00%	0.40%
14:30	USD	Empire State Manufacturing Index	Sep	-12.7	-31.3
14:30	USD	Retail Sales m/m	Aug	-0.10%	0.00%
TIME	AREA	PREVIOUS SESSION'S RELEASES	PERIOD	EXP.	ACT.
08:00	GBP	CPI y/y	Jul	10.00%	9.90%
08:00	GBP	Core CPI y/y	Jul	6.20%	6.30%
13:00	RSA	Retail Sales MoM	Jul	-0.80%	-0.10%
13:00	RSA	Retail Sales YoY	Jul	2.00%	8.60%
14:30	USD	PPI m/m	Jul	-0.10%	-0.10%

LOCAL EQUITIES | JSE ALL SHARE COMPANIES

BEST ONE-DAY & PERFORMERS						
	CODE	CLOSE	1D%	5D%	YTD%	
Altron Limited A	AEL	910	4.60	5.81	-0.55	
Momentum Met Hldgs Ltd	MTM	1750	3.43	7.89	-7.65	
RFG Holdings Limited	RFG	1085	3.33	7.53	-11.64	
African Rainbow Cap Inv	AIL	580	3.02	0.87	-14.71	
Karooooo Ltd	KRO	43799	2.82	0.69	-18.13	
WORST ONE-DAY & PERFORMERS						
	CODE	CLOSE	1D%	5D%	YTD%	
Astral Foods Ltd	ARL	20354	-5.86	-5.18	17.89	
Standard Bank Group Ltd	SBK	14562	-5.23	-3.49	4.01	
Curro Holdings Limited	COH	930	-4.12	-8.01	-25.30	
Steinhoff Int Hldgs N.V.	SNH	217	-3.98	-8.82	-56.77	
Absa Group Limited	ABG	17838	-3.94	-0.79	16.93	

DIVIDEND DATA

COMPANY	CODE	DIVIDEND	COMPANY	CODE	DIVIDEND
Motus Holdings	MTH	435 ZARc	Santam	SNT	462 ZARc
Cashbuild	CSB	677 ZARc	DRDGOLD	DRD	40 ZARc
Grindrod	GND	17.2 ZARc	Truworths International	TRU	205 ZARc
Aspen Pharmacare	APN	326 ZARc	Thungela Resources	TGA	6000 ZARc
Impala Platinum	IMP	1050 ZARc	Bid Corporation	BID	400 ZARc

Last date to trade 20 Sep

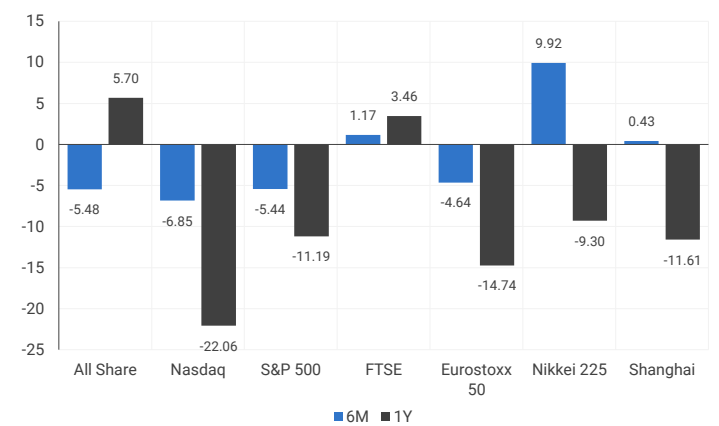
INTERNATIONAL INDICES

normalised percentage performances (in rand terms)



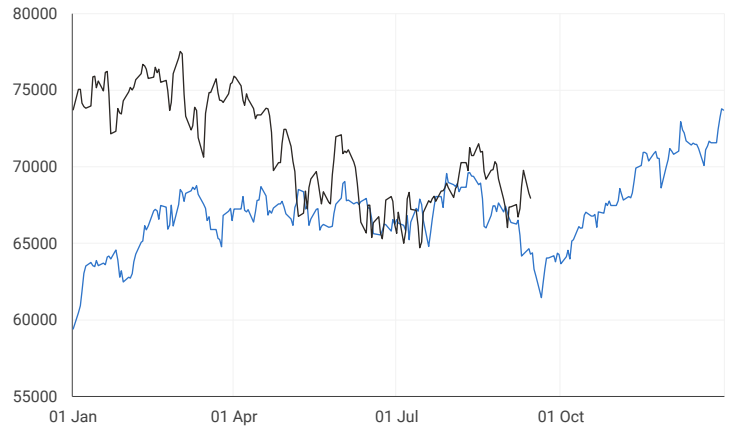
INTERNATIONAL INDICES

6-month & 1-year percentage performances



JSE ALL SHARE INDEX

2021 V 2022



LOCAL EQUITIES | JSE LARGE CAP COMPANIES (CENTS PER SHARE)

COMPANY	CLOSE	PREVIOUS	1D%	5D%	1M%	YTD%
Absa Group	17838	18569	-3.94	-0.79	-4.15	16.93
Anglo	57848	58360	-0.88	5.56	-0.12	-11.24
Angloplat	127822	125845	1.57	5.47	-0.14	-29.64
Anglo Gold Ashanti	23601	23464	0.58	1.55	-7.14	-28.20
Anheuser-Busch Inbev	85604	87343	-1.99	1.24	-3.05	-11.08
Bhp Group Plc	45686	46072	-0.84	8.41	2.96	-3.70
Bid Corp	31111	31245	-0.43	-1.91	-4.17	-4.69
British American Tobacco Plc	69327	70149	-1.17	0.32	5.85	18.32
Compagnie Financiere	19155	19215	-0.31	1.90	-2.84	-20.64
Capitec	179177	183131	-2.16	-14.57	-15.71	-12.16
Discovery	10951	10830	1.12	-1.07	-19.35	-23.72
FirstRand	6439	6454	-0.23	1.48	-6.26	5.90
Goldfields	13916	14181	-1.87	-0.02	-9.16	-20.09
Glencore Plc	9995	9935	0.60	6.60	7.54	23.17
Implats	19800	19348	2.34	6.91	2.14	-12.00
Kumba Iron Ore	38120	38815	-1.79	3.48	-17.65	-17.15
Mondi Plc	29288	30013	-2.42	1.24	-12.82	-25.88
Mtn Group	13271	13379	-0.81	2.09	-14.00	-22.26
Naspers -N	247000	244411	1.06	4.04	1.06	-0.08
Prosus Nv	104191	103895	0.28	4.17	-0.59	-20.45
Stanbank	14562	15365	-5.23	-3.49	-14.78	4.01
Shoprite	22669	22896	-0.99	0.75	-7.44	8.53
Sanlam	5486	5514	-0.51	2.05	-5.88	-7.58
Sasol	31672	31466	0.65	1.21	-11.62	22.29
Sibanye Stillwater	4047	4110	-1.53	4.55	-0.52	-17.58
Vodacom Group	13057	13055	0.02	1.20	-4.60	-3.01

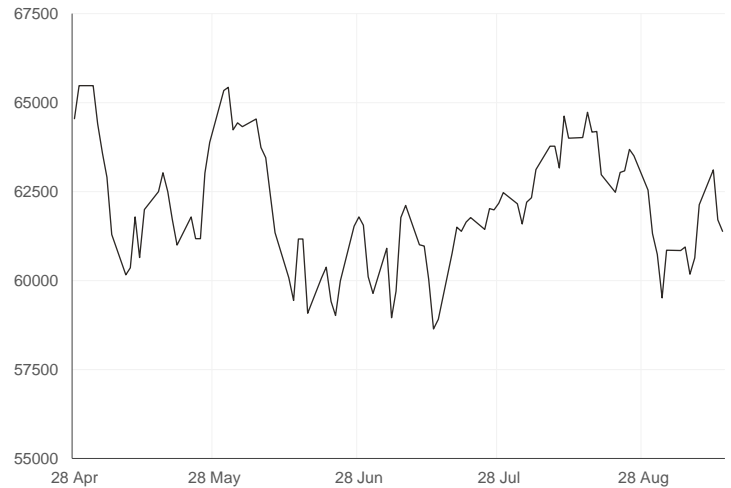
SOUTH AFRICAN MARKET COMMENTARY

SELECTED HEADLINES

Shares on the Johannesburg Stock Exchange fell yesterday, as the JSE All-Share index shed 0.45% and the Top-40 index dropped 0.52%. Financial stocks weighed the most on the overall market, with the local Financial 15 index closing 1.52% lower. Meanwhile, South Africa's state power utility Eskom said it would implement "Stage 4" rotational power cuts throughout Thursday and Friday, with the possibility of lower stages from Saturday morning.

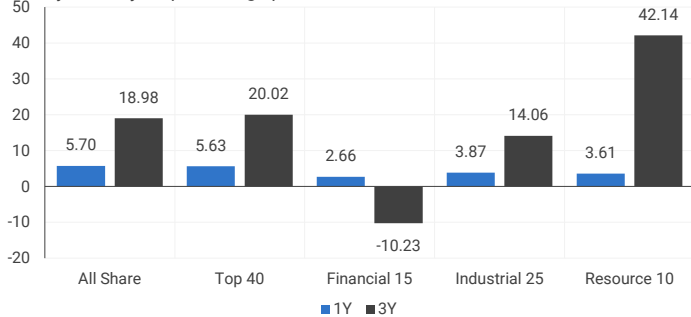
JSE TOP 40 INDEX

last 100 days



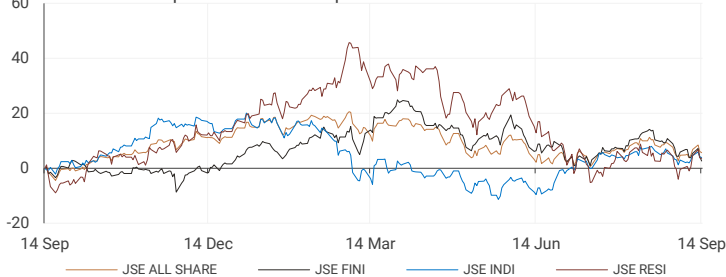
LOCAL INDICES

1-year & 3-year percentage performances



LOCAL INDICES

Normalised % performances comparison



EXPECTED COMPANY REPORTING SCHEDULE

COMPANY	CODE	RELEASE	DATE
Hyprop Investments	HYP	Final	15 Sep
Metair Investments	MTA	Interim	15 Sep
FirstRand	FSR	Final	15 Sep
City Lodge Hotels	CLH	Final	16 Sep
Sasfin Holdings	SFN	Final	21 Sep

BANK AND OTHER SELECTED PREFERENCE SHARES

COMPANY	CODE	CODE	CLEAN YIELD	APPROX. NEXT LDT
Investec Limited	INPR	9000	7.67	07 Dec 2022
Standard Bank	SBPP	9301	7.76	07 Sep 2022
Absa	ABSP	90600	7.08	14 Sep 2022
Capitec	CPIP	9422	7.49	14 Sep 2022
Steinhoff	SHFF	7700	9.96	19 Oct 2022
Grindrod	GNDP	9280	8.70	20 Sep 2022
Netcare	NTCP	8500	9.12	02 Nov 2022
Discovery	DSBP	9640	9.84	20 Sep 2022
Invicta	IVTP	9420	10.18	23 Nov 2022

SENS ANNOUNCEMENTS

SELECTED RELEASES

GROWTHPOINT PROPERTIES LIMITED – Group Summarised Audited Annual Results

Dividend per share increased by 8.4% to 128.4 cents compared to 118.5 cents for the comparative period based on an annual pay-out ratio of 82.5% compared to 80.0% for the comparative period. SA REIT Net asset value per share increased by 6.7% to 2 158 cents compared to 2 023 cents at 30 June 2021. Group SA REIT LTV decreased to 37.9% compared to 40.0% for the comparative period. SA REIT FFO per share increased by 13.7% to 155.5 cents compared to 136.8 cents for the comparative period. Group vacancies decreased to 8.5% compared to 10.3% for the comparative period. Total revenue decreased by 0.6% to R13.05bn compared to R13.13bn for the comparative period as a result of property sales, partly offset by decreased vacancies and decreased rental discounts provided to tenants. Operating profit decreased by 4.2% to R8.70bn compared to R9.08bn for the comparative period. Interest cover ratio increased to 3.1 times compared to 2.9 times at 30 June 2021. Basic headline earnings per share increased by 24.2% to 211.14 cents compared to 169.98 cents for the comparative period. Basic earnings per share increased to 233.04 cents compared to 15.31 cents loss for the comparative period.

Move | -0.69% Open | 1316c Close | 1301c High | 1338c Low | 1300c

MOMENTUM METROPOLITAN HOLDINGS LIMITED – Audited financial results

The Group delivered normalised headline earnings of R4 383 million for the twelve months ended 30 June 2022, significantly higher than the prior year. It is noted that the prior year's results are not directly comparable to the current year as the prior year results were severely impacted by the Covid-19 pandemic and included a net mortality loss of R2 823 million. The Group's solid performance during F2022 follows the less severe impacts of Covid-19 on earnings, with mortality starting to improve over the third and fourth quarters. With the positive earnings impact from the partial release of opening Covid-19 provisions, mortality contributed positively to the normalised headline earnings of the Group, by R105 million. Normalised headline earnings per share increased from 67.1 cents to 287.2 cents. Headline earnings per share increased from 30.9 cents to 297.3 cents and earnings per share improved from 31.3 cents to 260.6 cents.

Move | 3.43% Open | 1708c Close | 1750c High | 1775c Low | 1687c

LOCAL EQUITIES | JSE MID CAP COMPANIES (CENTS PER SHARE)

COMPANY	CODE	CLOSE	PREVIOUS	1D%	1M%	YTD%
Aspen	APN	14441	14532	-0.63	-6.86	-35.66
African Rainbow	ARI	26368	26265	0.39	10.76	14.04
Avi	AVI	7354	7232	1.69	4.62	-0.49
Barworld	BAW	8909	9058	-1.64	-9.55	-40.75
Bidvest Group	BVT	21776	21785	-0.04	-3.57	14.94
Capco	CCO	2339	2364	-1.06	-16.49	-35.44
Clicks Group	CLS	30188	30242	-0.18	0.27	-4.33
Coronation	CML	3165	3180	-0.47	-10.01	-39.76
Dis-Chem	DCP	3348	3352	-0.12	-1.01	-5.48
Distell Group	DGH	17643	17650	-0.04	1.98	4.52
Drdgold	DRD	997	990	0.71	-5.23	-24.47
Exxaro Resources	EXX	23169	22820	1.53	14.32	51.56
Fortress Reit A	FFA	985	985	0.00	-19.92	-21.20
Fortress Reit B	FFB	430	431	-0.23	4.37	32.31
Growthpoint	GRT	1301	1310	-0.69	-5.04	-15.35
Harmony Gold	HAR	3804	3790	0.37	-32.23	-42.88
Investec	INL	7795	7824	-0.37	-14.37	-10.97
Investec	INP	7869	7925	-0.71	-14.46	-9.23
Italtile	ITE	1480	1523	-2.82	-1.46	-11.90
Life Healthcare	LHC	1865	1938	-3.77	-13.09	-22.39
Multichoice Group	MCG	11600	11421	1.57	-5.06	-4.94
Mediclinic Int.	MEI	9965	9903	0.63	2.13	46.41
Montauk Renewables	MKR	33841	33771	0.21	30.67	96.75
Mr Price Group	MRP	19106	19163	-0.30	-2.78	-4.23
Momentum	MTM	1750	1692	3.43	6.38	-7.65
Ninety One Plc	N91	3919	3984	-1.63	-8.22	-31.82
Nedbank	NED	21159	21100	0.28	-2.87	20.89
Northam Platinum	NHM	16157	16012	0.91	-13.13	-22.88
Nepi Rockcastle Plc	NRP	9116	9171	-0.60	-5.22	-14.00
Netcare	NTC	1382	1418	-2.54	-14.11	-12.97
Ninety One	NY1	3857	3910	-1.36	-8.93	-31.75
Old Mutual	OMU	1074	1063	1.03	-8.67	-18.02
Pik N Pay	PIK	5945	5906	0.66	-1.43	13.30
Pepkor	PPH	2144	2155	-0.51	1.28	-2.06
Psg	PSG	2285	2289	-0.17	-74.96	-74.39
Quilter Plc	QLT	2096	2144	-2.24	-6.84	-33.84
Rbplapts	RBP	15035	14800	1.59	1.44	-3.82
Redefine	RDF	388	390	-0.51	-6.05	-11.82
Remgro	REM	13311	13255	0.42	-4.84	1.49
Resilient Reit	RES	5205	5248	-0.82	-9.48	-12.89
Rand Merchant Inv	RMI	2759	2751	0.29	-4.63	32.06
Reinet Investments Sca	RNI	29400	30000	-2.00	-0.05	2.79
Sappi	SAP	4378	4360	0.41	-16.43	-4.12
Santam	SNT	24694	24700	-0.02	-5.79	-8.20
Spar	SPP	15136	15115	0.14	-1.16	-9.43
Sirius Real Estate	SRE	1598	1610	-0.75	-15.81	-47.31
Tigebrands	TBS	15958	15905	0.33	-3.86	-11.83
The Foschini Group	TFG	13575	13693	-0.86	1.13	9.56
Thungela Resources	TGA	36000	35072	2.65	30.03	325.83
Telkom	TKG	4795	4855	-1.24	1.70	-11.34
Truworths	TRU	5806	5762	0.76	3.70	11.12
Textainer	TXT	52902	53769	-1.61	-4.50	-8.00
Woolies	WHL	6363	6440	-1.20	17.12	22.70

LOCAL EQUITIES | JSE SMALL CAP COMPANIES (CENTS PER SHARE)

COMPANY	CODE	CLOSE	PREVIOUS	1D%	1M%	YTD%
Advtech	ADH	1745	1735	0.58	3.44	-0.74
Altron	AEL	910	870	4.60	9.64	-0.55
Aeci	AFE	8241	8042	2.47	-10.65	-26.42
Alexander Forbes	AFH	467	476	-1.89	-6.60	4.01
Afrimat	AFT	5081	5030	1.01	-2.29	-11.53
Arrowhead Prop.	AHB	332	331	0.30	-0.90	-21.88
African Rainbow Cap.	AIL	580	563	3.02	-2.68	-14.71
Adcock Ingram	AIP	4864	4905	-0.84	-5.09	-3.59
Astral	ARL	20354	21622	-5.86	-1.91	17.89
Attacq	ATT	690	674	2.37	9.52	-13.64
Brait	BAT	402	395	1.77	-4.96	-11.06
Blue Label Telecoms	BLU	636	628	1.27	-11.05	24.95
Bytes Technology	BYI	8500	8649	-1.72	-3.57	-30.36
City Lodge Hotels	CLH	444	451	-1.55	8.03	-17.93
Curro	COH	930	970	-4.12	-19.13	-25.30
Cashbuild	CSB	20565	20100	2.31	-18.88	-21.20
Datatec	DTC	4268	4241	0.64	-9.31	10.86
Emira	EMI	968	951	1.79	-6.02	1.89
Equites Property Fund	EQU	1807	1798	0.50	-7.99	-21.40
Famous Brands	FBR	6423	6384	0.61	1.47	-17.82
Gindrod	GND	1065	1044	2.01	3.20	115.15
Hci	HCI	18780	18420	1.95	8.43	153.78
Hudaco	HDC	13743	13700	0.31	-3.61	4.23
Hammerson Plc	HMN	432	437	-1.14	-15.46	-39.92
Hyprop	HYP	3690	3680	0.27	-3.30	-0.94
Investec Prop Fund	IPF	1090	1075	1.40	2.35	-12.10
Jse	JSE	10619	10600	0.18	-6.98	-5.19
Kap Industrial	KAP	462	455	1.54	3.82	5.72
Karooooo	KRO	43799	42599	2.82	4.28	-18.13
Psg Konsult	KST	1083	1095	-1.10	-13.01	-19.42
Liberty Two Degrees	L2D	490	480	2.08	17.79	3.16
Libstar	LBR	585	570	2.63	2.63	-12.03
Lighthouse Capital	LTE	650	672	-3.27	-12.28	-27.78
Massmart	MSM	6023	6075	-0.86	48.35	-0.74
Mas Real Estate Inc	MSP	1987	2028	-2.02	-3.78	-5.52
Metair	MTA	2655	2625	1.14	1.07	-3.45
Motus	MTH	12995	12965	0.23	10.36	18.04
M&R Hold	MUR	746	740	0.81	-37.26	-47.72
Oceana	OCE	5300	5315	-0.28	-1.03	-4.57
Omnia	OMN	6255	6257	-0.03	-4.34	-2.28
Pan African Resource	PAN	370	370	0.00	-7.27	-3.65
Raubex	RBX	3439	3439	0.00	1.66	-13.59
Rhodes Food Pty	RFG	1085	1050	3.33	6.27	-11.64
Reunert	RLO	4450	4494	-0.98	-5.60	-16.04
Sa Corp Real Estate	SAC	218	222	-1.80	0.00	-7.23
Steinhoff International N.V.	SNH	217	226	-3.98	-12.50	-56.77
Super	SPG	2772	2780	-0.29	-3.31	-18.49
Stor-Age Property Reit	SSS	1410	1390	1.44	1.22	-3.09
Stenprop	STP	3400	3440	-1.16	-2.16	-20.93
Sun Int	SUI	3080	3140	-1.91	10.00	8.26
Transaction Capital	TCP	3696	3665	0.85	-8.83	-17.92
Tsogo Sun Hotels	TGO	375	380	-1.32	4.46	6.53
Tsogo Sun Gaming	TSG	1320	1310	0.76	20.11	13.30
Vukile	VKE	1327	1311	1.22	-9.73	7.28
Wbhovco	WBO	7500	7665	-2.15	-16.23	-33.79
Zeder Investments	ZED	188	185	1.62	5.03	-41.98

10-YEAR BOND YIELD | SELECTED ITEMS (*BASIS POINT CHANGE)

COMPANY	YIELD	1D%	1M%	YTD%
United States	3.43	2	64	213
United Kingdom	3.13	---	111	235
Germany	1.71	---	82	202
Japan	0.24	-1	6	22
South African 10Y	10.32	13	32	139

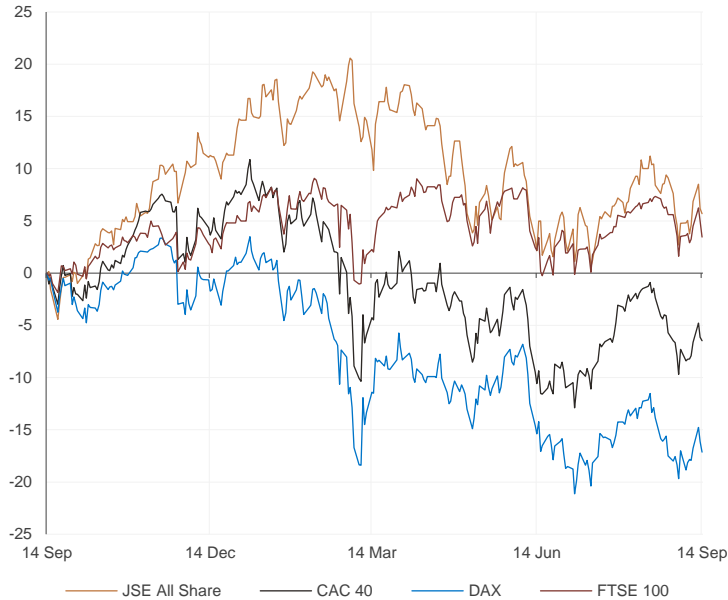
SOUTH AFRICAN 10-YEAR BOND 2021 v 2022

GLOBAL INTEREST RATES | SELECTED ITEMS

REGION	DATE CHANGED	CURRENT RATE
United States	27 Jul 2022	2.25%-2.50%
United Kingdom	04 Aug 2022	1.75%
European	14 Sep 2022	1.25%
SA Repo Rate	21 Jul 2022	5.50%
SA Prime Rate	21 Jul 2022	9.00%

GLOBAL MARKETS

European Indices v JSE All Share Normalised Performances



US Indices v JSE All Share Normalised Performances



Asian Indices v JSE All Share Normalised Performances



EUROPEAN MARKET COMMENTARY

SELECTED HEADLINES

European markets closed lower on Wednesday as investors reacted to the latest inflation data out of the U.S. The pan-European Stoxx 600 ended down around 0.8%, with almost all sectors and all major bourses sliding into negative territory. Mining stocks led the losses, down 2.3%, while oil and gas stocks bucked the downward trend, up 0.8%. U.K. inflation slowed in August on the back of a fall in fuel prices, though food prices continued to rise as the country's cost-of-living crisis persists. The consumer price index rose 9.9% annually, according to estimates published Wednesday by the Office for National Statistics.

EUROPEAN INDICES	CLOSE	PREVIOUS	1D%	5D%	1M%	YTD%
CAC 40	6222.41	6245.69	-0.37	1.91	-5.06	-13.01
DAX 30	13028.00	13188.95	-1.22	0.87	-5.57	-17.98
Eurostoxx 50	3567.56	3586.18	-0.52	1.87	-5.54	-17.00
FTSE	7277.30	7385.86	-1.47	0.55	-2.98	-1.45



AMERICAN MARKET COMMENTARY

SELECTED HEADLINES

The Nasdaq Composite ground higher in choppy trading on Wednesday as investors tried to find their footing after the biggest one-day drop in more than two years. Moderna was one of the top performers in the Nasdaq, jumping more than 6%. Tesla rose 3.6%, and Apple tacked on 1%. Shares of Netflix jumped to session highs following a Wall Street Journal report that the streaming giant projects advertising-supported tier would reach 40 million viewers by the third quarter of 2023.

AMERICAN INDICES	CLOSE	PREVIOUS	1D%	5D%	1M%	YTD%
Dow Jones	31135.09	31104.97	0.10	-1.41	-7.78	-14.32
Nasdaq	11719.68	11633.57	0.74	-0.61	-10.17	-25.09
S&P 500	3946.01	3932.69	0.34	-0.85	-7.81	-17.21
Dollar Index	109.75	109.91	-0.15	0.18	3.98	14.69
US VIX	26.16	27.27	-4.07	6.17	33.95	51.92



ASIAN MARKET COMMENTARY

SELECTED HEADLINES

Shares in the Asia-Pacific mildly rose on Thursday after Wednesday's negative session. In China, the central bank kept its one-year medium-term lending facility (MLF) unchanged at 2.75%. Meanwhile, Australia added 33,500 jobs in the month of August, a 0.2% increase from July in seasonally adjusted terms. Net employment declined in July. The nation's unemployment rate rose to 3.5%, with the youth unemployment rate at 8.4% for the month.

ASIAN INDICES	CLOSE	PREVIOUS	1D%	5D%	1M%	YTD%
Hang Seng	18847.10	19326.86	-2.48	-1.04	-6.58	-19.45
Nikkei 225	27818.62	28614.63	-2.78	1.42	-2.55	-3.38
Shanghai	3237.54	3263.80	-0.80	-0.27	-1.20	-11.05



COMMODITIES & CURRENCIES

BRENT CRUDE (\$) last 100 days



PLATINUM (\$) last 100 days



COMMODITY MARKET COMMENTARY

SELECTED HEADLINES

Gold prices slipped to a two-week low this morning, as a stronger U.S. dollar and expectations of big interest rate hikes from the Federal Reserve diminished the metal's appeal. Oil prices edged higher earlier today as the market balanced weak demand with supply disruption amid a looming rail stoppage in the United States, the world's biggest crude consumer.

COMMODITY	LAST	CLOSE	%CHG	1D%	5D%	YTD%
Brent Crude (\$)	94.48	93.47	1.08	7.78	-3.45	21.22
Gold (\$)	1697.46	1702.46	-0.29	-1.26	-5.79	-7.21
Palladium	2173.50	2108.50	3.08	6.28	-2.42	14.56
Platinum (\$)	909.50	885.01	2.77	4.48	-5.85	-6.14
Silver	19.64	19.34	1.51	6.32	-5.67	-15.77

GOLD (\$) last 100 days



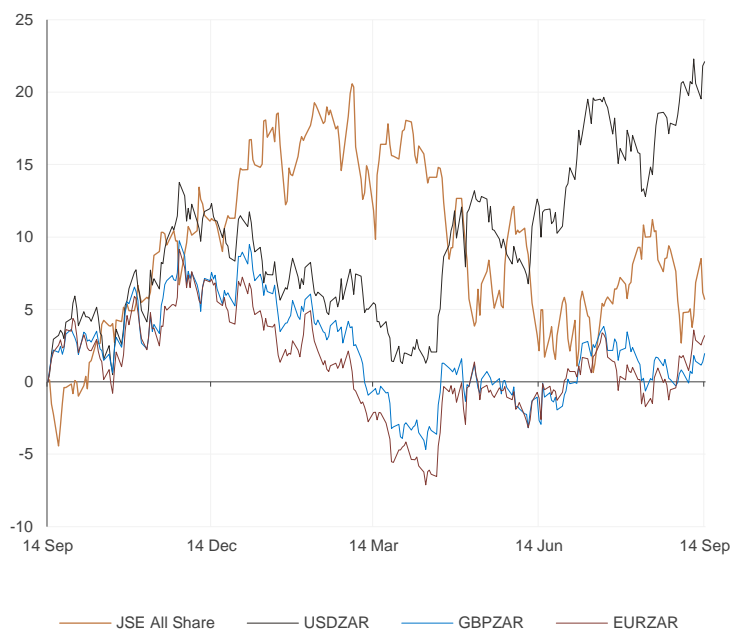
COMMODITY	LAST	CLOSE	%CHG	1D%	5D%	YTD%
USDZAR	17.50	17.45	0.24	1.26	8.25	9.74
GBPZAR	20.17	20.06	0.57	1.37	2.62	-6.42
EURZAR	17.45	17.40	0.30	0.84	4.99	-3.78
AUDZAR	11.80	11.75	0.40	0.72	2.41	1.78
EURUSD	1.00	1.00	0.14	-0.22	-2.71	-12.24
USDJPY	143.15	144.56	-0.98	-0.40	7.25	24.36
GBPUSD	1.15	1.15	0.42	0.05	-4.91	-14.70

CURRENCY MARKET COMMENTARY

SELECTED HEADLINES

The rand was flat in early trade on Wednesday, ahead of local retail sales figures due to be released later in the day. At the close of the day however, the rand was trading around R17.50 to the dollar, 0.24% softer. Meanwhile, the dollar stood near recent peaks this morning as markets increased bets the Fed has more work to do in its aggressive tightening streak to curb red-hot inflation, while wariness of intervention kept the yen steady.

Currencies v JSE All Share Normalised Performances



USDZAR last 100 days



EURUSD last 100 days



Sources : JSE, Moneyweb, CNBC, BBC, CNN

Disclaimer: This note is prepared for Sanlam Private Wealth (Pty) Ltd, by K2013143132 (Pty) Ltd trading as Thompson Green. Thompson Green is an independent company contracted to Sanlam Private Wealth (Pty) Ltd. The views expressed in this note are those of Thompson Green and/or its analysts and do not necessarily reflect the views of Sanlam Private Wealth (Pty) Ltd, Sanlam or any officer or agent thereof. K2013143132 (Pty) Ltd trading as Thompson Green is a research house and not a registered broker, financial advisor or financial service provider. Our editors and customer service teams also do not give personal investment advice. The information in this document is general advice only and may not be appropriate to your particular investment objectives, financial situation or particular needs, so before investing or if you have any doubts about your personal situation, you should seek professional advice from a stockbroker or independent financial adviser authorised by the Financial Services Board. We research our recommendations and articles thoroughly, but disclaim all liability for any inaccuracies or omissions in this publication and any trading or investment losses you may incur. Should you outperform, we will take the credit. Thompson Green also acts as an introducer of business to Authorised Financial Services Providers. All accounts opened are held by the Authorised Registered Financial Services Provider and not Thompson Green. The information in this email is confidential and may be legally privileged. It is intended solely for the addressee. Access to this email by anyone else is unauthorised. If you are not the intended recipient, any disclosure, copying, distribution or any action taken or omitted to be taken in reliance on it, is prohibited and may be unlawful. If you are not the intended recipient please return the message to the sender and delete it from your records.