

GLOBAL OVERVIEW | SELECTED INDICES

SOUTH AFRICAN INDICES						
	CLOSE	PREVIOUS	1D%	5D%	1M%	YTD%
All Share	66602.84	66474.86	0.19	-2.45	-4.47	-9.64
Top 40	60119.49	59967.30	0.25	-2.57	-4.53	-10.34
Financial 15	14491.37	14384.06	0.75	-2.31	-7.69	-2.08
Industrial 25	82301.24	81915.92	0.47	-2.36	-4.42	-13.78
Resource 10	60704.55	61077.41	-0.61	-3.43	-2.33	-14.47
Mid Cap	75117.21	74949.04	0.22	-1.95	-3.70	-5.75
Small Cap	69608.32	69848.08	-0.34	-0.46	-0.96	3.11
Banks	9103.56	9030.14	0.81	-2.93	-8.59	3.18
General Retailers	6813.45	6780.08	0.49	-1.31	-2.07	-9.43
Property (J253) - TR	1524.22	1525.52	-0.09	-1.22	-4.81	-9.47
AMERICAN INDICES						
	CLOSE	PREVIOUS	1D%	5D%	1M%	YTD%
Dow Jones	30706.23	31019.68	-1.01	-1.28	-8.90	-15.50
Nasdaq	11425.05	11535.02	-0.95	-1.79	-10.08	-26.97
S&P 500	3855.93	3899.89	-1.13	-1.95	-8.81	-19.10
Dollar Index	109.92	109.35	0.53	0.01	1.75	14.88
US VIX	27.16	25.76	5.43	-0.40	31.84	57.72
EUROPEAN INDICES						
	CLOSE	PREVIOUS	1D%	5D%	1M%	YTD%
CAC 40	5979.47	6061.59	-1.35	-4.26	-7.95	-16.41
DAX 30	12670.83	12803.24	-1.03	-3.93	-6.45	-20.23
Eurostoxx 50	3467.09	3499.49	-0.93	-3.32	-7.06	-19.34
FTSE	7192.66	7236.68	-0.61	-2.62	-4.74	-2.60
ASIAN INDICES						
	CLOSE	PREVIOUS	1D%	5D%	1M%	YTD%
Hang Seng	18781.42	18565.97	1.16	-2.82	-5.01	-19.73
Nikkei 225	27688.42	27567.65	0.44	-3.24	-4.29	-3.83
Shanghai	3122.41	3115.60	0.22	-4.33	-4.16	-14.21
EARLY MORNING INDICATORS						
	LAST	CLOSE	%CHG	1D%	5D%	YTD%
Tencent	289.00	293.40	-1.50	1.52	-3.74	-35.47
BHP Billiton	3803	3918	-2.94	3.62	-0.31	-5.59

INTERNATIONAL ECONOMIC CALENDAR | SELECTED EVENTS

TIME	AREA	TODAY'S EVENTS & RELEASES	PERIOD	EXP.	PREV.
10:00	RSA	Inflation Rate YoY	Aug	7.60%	7.80%
10:00	RSA	Inflation Rate MoM	Aug	0.30%	1.50%
10:00	RSA	Core Inflation Rate YoY	Aug	4.70%	4.60%
20:00	USD	Federal Funds Rate	---	3.25%	2.50%
20:30	USD	FOMC Press Conference	---	---	---
TIME	AREA	PREVIOUS SESSION'S RELEASES	PERIOD	EXP.	ACT.
08:00	EUR	German PPI m/m	Aug	2.50%	7.90%
10:00	EUR	Current Account	Jul	5.3B	-19.9B
14:30	USD	Building Permits	Aug	1.60M	1.52M
14:30	USD	Housing Starts	Aug	1.45M	1.58M
19:00	EUR	ECB President Lagarde Speaks	---	---	---

LOCAL EQUITIES | JSE ALL SHARE COMPANIES

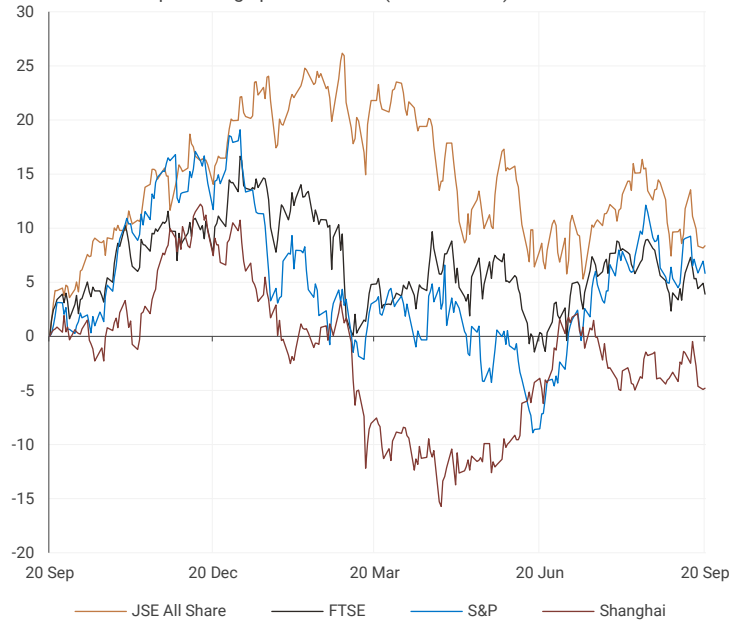
BEST ONE-DAY & PERFORMERS						
	CODE	CLOSE	1D%	5D%	YTD%	
Wilson Bayly Hlm-Ovc Ltd	WBO	7673	4.57	0.10	-32.27	
Cashbuild Ltd	CSB	21283	3.88	5.89	-18.45	
Tiger Brands Ltd	TBS	16321	2.82	2.62	-9.83	
Investec Property Fund Ltd	IPF	1109	2.69	3.16	-10.56	
Netcare Limited	NTC	1364	2.63	-3.81	-14.11	
WORST ONE-DAY & PERFORMERS						
	CODE	CLOSE	1D%	5D%	YTD%	
Murray & Roberts Hldgs	MUR	727	-6.44	-1.76	-49.05	
Sappi Ltd	SAP	4145	-5.95	-4.93	-9.22	
PPC Limited	PPC	246	-4.28	-6.11	-51.29	
Pan African Resource plc	PAN	346	-3.89	-6.49	-9.90	
City Lodge Hotels Ltd	CLH	385	-3.75	-14.63	-28.84	

DIVIDEND DATA

COMPANY	CODE	DIVIDEND	COMPANY	CODE	DIVIDEND
Motus Holdings	MTH	435 ZARc	Santam	SNT	462 ZARc
Cashbuild	CSB	677 ZARc	DRDGOLD	DRD	40 ZARc
Grindrod	GND	17.2 ZARc	Truworths International	TRU	205 ZARc
Aspen Pharmacare	APN	326 ZARc	Thungela Resources	TGA	6000 ZARc
Impala Platinum	IMP	1050 ZARc	Bid Corporation	BID	400 ZARc

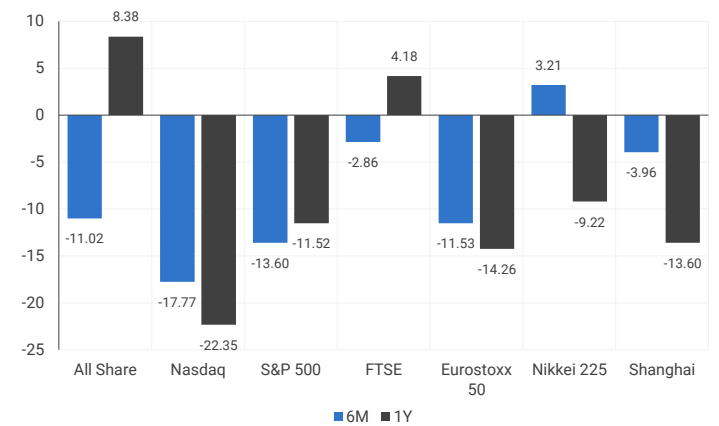
INTERNATIONAL INDICES

normalised percentage performances (in rand terms)

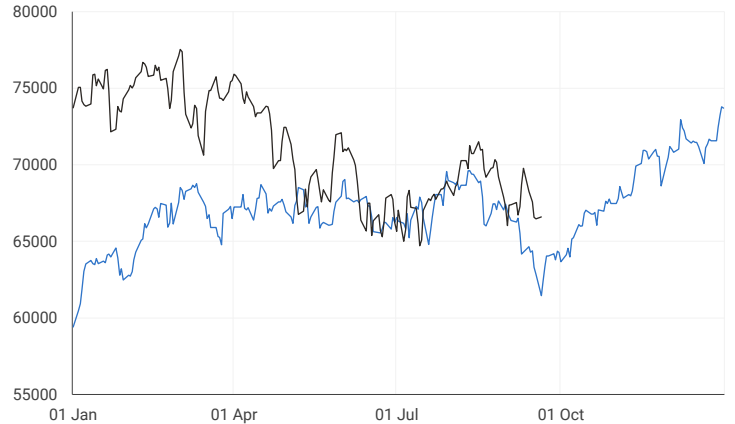


INTERNATIONAL INDICES

6-month & 1-year percentage performances



JSE ALL SHARE INDEX
2021 V 2022



LOCAL EQUITIES | JSE LARGE CAP COMPANIES (CENTS PER SHARE)

COMPANY	CLOSE	PREVIOUS	1D%	5D%	1M%	YTD%
Absa Group	18343	17984	2.00	-1.22	-0.75	20.24
Anglo	56077	56294	-0.39	-3.91	-1.52	-13.96
Angloplat	124050	122509	1.26	-1.43	6.20	-31.72
Anglo Gold Ashanti	22429	22877	-1.96	-4.41	-10.89	-31.76
Anheuser-Busch Inbev	88051	88639	-0.66	0.81	-1.38	-8.54
Bhp Group Plc	45487	45200	0.63	-1.27	-4.89	-4.11
Bid Corp	29921	29700	0.74	-4.24	-7.37	-8.34
British American Tobacco Plc	70516	69800	1.03	0.52	1.56	20.35
Compagnie Financiere	18826	18647	0.96	-2.02	-5.40	-22.00
Capitec	172800	172240	0.33	-5.64	-17.91	-15.29
Discovery	10945	10693	2.36	1.06	-17.45	-23.77
Firststrand	6300	6294	0.10	-2.39	-7.15	3.62
Goldfields	13248	13521	-2.02	-6.58	-10.26	-23.92
Glencore Plc	9697	9867	-1.72	-2.40	-0.95	19.49
Implats	19043	19202	-0.83	-1.58	7.20	-15.36
Kumba Iron Ore	37911	37715	0.52	-2.33	-8.78	-17.60
Mondi Plc	28771	29400	-2.14	-4.14	-8.66	-27.19
Mtn Group	12831	12857	-0.20	-4.10	-7.34	-24.84
Naspers -N	239200	236917	0.96	-2.13	-3.29	-3.24
Prosus Nv	101786	101406	0.37	-2.03	-5.75	-22.29
Stanbank	14632	14451	1.25	-4.77	-11.07	4.51
Shoprite	22405	22225	0.81	-2.14	-4.22	7.26
Sanlam	5440	5421	0.35	-1.34	-4.38	-8.36
Sasol	30950	31249	-0.96	-1.64	-6.60	19.50
Sibanye Stillwater	3837	3861	-0.62	-6.64	0.21	-21.85
Vodacom Group	12626	12700	-0.58	-3.29	-5.27	-6.21

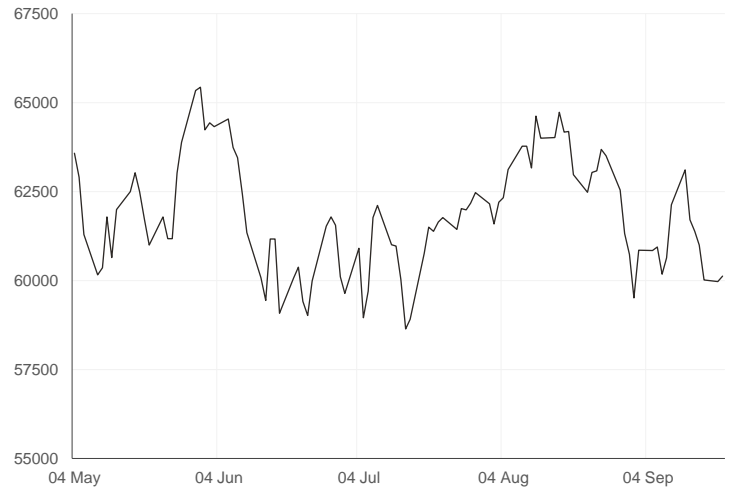
SOUTH AFRICAN MARKET COMMENTARY

SELECTED HEADLINES

Stocks edged cautiously higher on Tuesday ahead of the expected Fed rate hike, with declines in gold miners preventing meaningful gains. On the Johannesburg Stock Exchange, the Top-40 index rose 0.25%, while the broader All-Share ended 0.19% higher. Local data showed that a composite leading business cycle indicator decreased 1.0% month-on-month in July. In company news, JSE-listed real estate investment trust (Reit) and leading self-storage property fund Stor-Age will list its shares on South African capital market platform A2X Markets (A2X), with shares being made available for trade from 27 September.

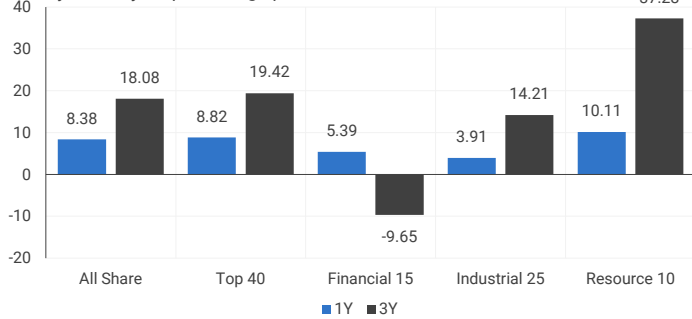
JSE TOP 40 INDEX

last 100 days



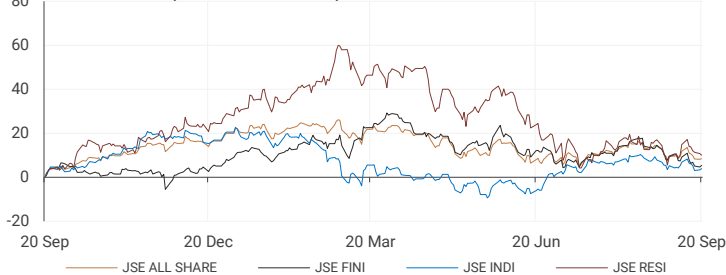
LOCAL INDICES

1-year & 3-year percentage performances



LOCAL INDICES

Normalised % performances comparison



EXPECTED COMPANY REPORTING SCHEDULE

COMPANY	CODE	RELEASE	DATE
Sasfin Holdings	SFN	Final	21 Sep
Rand Merchant Investment Holdings	RMI	Final	22 Sep
Hyprop Investments	HYP	Final	22 Sep
Choppies Enterprises	CHP	Final	22 Sep
Remgro	REM	Final	27 Sep

BANK AND OTHER SELECTED PREFERENCE SHARES

COMPANY	CODE	CODE	CLEAN YIELD	APPROX. NEXT LDT
Investec Limited	INPR	8930	7.68	07 Dec 2022
Standard Bank	SBPP	9350	7.77	07 Sep 2022
Absa	ABSP	93000	7.09	14 Sep 2022
Capitec	CPIP	9436	7.50	14 Sep 2022
Steinhoff	SHFF	7616	9.98	19 Oct 2022
Grindrod	GNDP	9574	8.71	20 Sep 2022
Netcare	NTCP	8131	9.13	02 Nov 2022
Discovery	DSBP	9680	9.86	20 Sep 2022
Invicta	IVTP	9426	10.20	23 Nov 2022

SENS ANNOUNCEMENTS

SELECTED RELEASES

RAND MERCHANT INVESTMENT HOLDINGS LIMITED – Trading statement

Shareholders are referred to RMI's trading statement released on the Stock Exchange News Service (SENS) on 27 June 2022 where the accounting treatment of RMI's investments in Hastings Group (Consolidated) Limited (Hastings), Discovery Limited (Discovery) and Momentum Metropolitan Holdings Limited (Momentum Metropolitan) was explained as follows:

The earnings of Hastings are equity accounted until 8 December 2021, the effective date of the sale. The proceeds on the sale of Hastings were utilised to, inter alia, repay all the group's outstanding preference share debt.

The earnings of Discovery and Momentum Metropolitan are also equity accounted until 8 December 2021, the date on which the unbundling of RMI's shareholdings in these entities met the accounting definition of being highly probable.

The financial results of all these investee companies are treated as discontinued operations in the RMI group financial results.

The unbundling of RMI's shareholdings in Discovery and Momentum Metropolitan was finalised on 25 April 2022.

Move | 1.47% Open | 2750c Close | 2828c High | 2974c Low | 2729c

LOCAL EQUITIES | JSE MID CAP COMPANIES (CENTS PER SHARE)

COMPANY	CODE	CLOSE	PREVIOUS	1D%	1M%	YTD%
Aspen	APN	14041	13992	0.35	-4.76	-37.44
African Rainbow	ARI	27224	26857	1.37	17.57	17.74
Avi	AVI	7357	7335	0.30	0.81	-0.45
Barworld	BAW	8757	8772	-0.17	-9.55	-41.76
Bidvest Group	BVT	22113	21926	0.85	-2.13	16.72
Capco	CCO	2355	2332	0.99	-11.10	-35.00
Clicks Group	CLS	28728	28702	0.09	-4.80	-8.95
Coronation	CML	3116	3100	0.52	-5.75	-40.69
Dis-Chem	DCP	3222	3252	-0.92	-10.80	-9.03
Distell Group	DGH	17700	17601	0.56	2.91	4.86
Drdgold	DRD	992	992	0.00	-2.17	-24.85
Exxaro Resources	EXX	22826	22787	0.17	6.87	49.32
Fortress Reit A	FFA	959	954	0.52	-11.29	-23.28
Fortress Reit B	FFB	420	427	-1.64	1.20	29.23
Growthpoint	GRT	1281	1279	0.16	-4.76	-16.66
Harmony Gold	HAR	3636	3693	-1.54	-32.57	-45.41
Investec	INL	7850	7752	1.26	-7.23	-10.34
Investec	INP	7867	7823	0.56	-8.06	-9.25
Italtile	ITE	1565	1565	0.00	6.68	-6.85
Life Healthcare	LHC	1704	1736	-1.84	-18.78	-29.09
Multichoice Group	MCG	11535	11477	0.51	-4.03	-5.47
Mediclinic Int.	MEI	9981	9800	1.85	0.24	46.65
Montauk Renewables	MKR	32258	32603	-1.06	10.94	87.55
Mr Price Group	MRP	18266	18300	-0.19	-5.16	-8.44
Momentum	MTM	1763	1743	1.15	6.85	-6.97
Ninety One Plc	N91	3982	3964	0.45	-3.77	-30.72
Nedbank	NED	20893	20636	1.25	-3.25	19.37
Northam Platinum	NHM	15833	15668	1.05	-6.12	-24.42
Nepi Rockcastle Plc	NRP	9230	9183	0.51	-1.42	-12.92
Netcare	NTC	1364	1329	2.63	-12.51	-14.11
Ninety One	NY1	3886	3870	0.41	-4.92	-31.23
Old Mutual	OMU	1043	1059	-1.51	-7.45	-20.38
Pik N Pay	PIK	5635	5753	-2.05	-8.08	7.39
Pepkor	PPH	2087	2087	0.00	1.56	-4.66
Psg	PSG	2295	2290	0.22	-74.35	-74.28
Quilter Plc	QLT	2000	2023	-1.14	-8.88	-36.87
Rbplapts	RBP	14700	14715	-0.10	1.94	-5.96
Redefine	RDF	373	376	-0.80	-8.58	-15.23
Remgro	REM	13355	13100	1.95	-1.13	1.83
Resilient Reit	RES	5125	5150	-0.49	-8.81	-14.23
Rand Merchant Inv	RMI	2828	2787	1.47	0.07	35.37
Reinet Investments Sca	RNI	28911	28921	-0.03	-0.12	1.08
Sappi	SAP	4145	4407	-5.95	-23.16	-9.22
Santam	SNT	25017	24407	2.50	-0.47	-7.00
Spar	SPP	14559	14492	0.46	-5.10	-12.88
Sirius Real Estate	SRE	1535	1585	-3.15	-14.48	-49.39
Tigebrands	TBS	16321	15874	2.82	-4.46	-9.83
The Foschini Group	TFG	12385	12712	-2.57	-6.51	-0.04
Thungela Resources	TGA	37687	37340	0.93	15.94	345.79
Telkom	TKG	4768	4744	0.51	4.72	-11.83
Truworths	TRU	5511	5550	-0.70	-4.46	5.47
Textainer	TXT	52800	52751	0.09	-6.98	-8.17
Woolies	WHL	6311	6316	-0.08	18.65	21.69

LOCAL EQUITIES | JSE SMALL CAP COMPANIES (CENTS PER SHARE)

COMPANY	CODE	CLOSE	PREVIOUS	1D%	1M%	YTD%
Advtech	ADH	1770	1770	0.00	7.27	0.68
Altron	AEL	906	916	-1.09	4.26	-0.98
Aeci	AFE	8560	8634	-0.86	-2.48	-23.57
Alexander Forbes	AFH	473	477	-0.84	2.16	5.35
Afrimat	AFT	4870	4941	-1.44	-6.70	-15.20
Arrowhead Prop.	AHB	327	330	-0.91	-1.80	-23.06
African Rainbow Cap.	AIL	600	610	-1.64	0.84	-11.76
Adcock Ingram	AIP	4857	4950	-1.88	-4.76	-3.73
Astral	ARL	19374	19669	-1.50	-6.24	12.22
Attacq	ATT	700	702	-0.28	8.53	-12.39
Brait	BAT	405	404	0.25	-2.64	-10.40
Blue Label Telecoms	BLU	609	612	-0.49	-14.23	19.65
Bytes Technology	BYI	8500	8400	1.19	-5.26	-30.36
City Lodge Hotels	CLH	385	400	-3.75	-10.26	-28.84
Curro	COH	900	887	1.47	-17.43	-27.71
Cashbuild	CSB	21283	20488	3.88	-14.35	-18.45
Datatec	DTC	4459	4464	-0.11	0.54	15.82
Emira	EMI	1029	1012	1.68	-2.92	8.32
Equites Property Fund	EQU	1779	1775	0.23	-8.30	-22.62
Famous Brands	FBR	5659	5878	-3.73	-6.09	-27.60
Gindrod	GND	1045	1052	-0.67	-7.77	111.11
Hci	HCI	18081	18485	-2.19	4.51	144.34
Hudaco	HDC	13210	13201	0.07	-10.14	0.19
Hammerson Plc	HMN	431	433	-0.46	-17.12	-40.06
Hyprop	HYP	3652	3665	-0.35	-4.20	-1.96
Investec Prop Fund	IPF	1109	1080	2.69	3.64	-10.56
Jse	JSE	10386	10551	-1.56	-6.80	-7.27
Kap Industrial	KAP	432	441	-2.04	-3.57	-1.14
Karooooo	KRO	43000	43000	0.00	1.18	-19.63
Psg Konsult	KST	1075	1076	-0.09	-8.12	-20.01
Liberty Two Degrees	L2D	491	494	-0.61	15.53	3.37
Libstar	LBR	605	595	1.68	8.81	-9.02
Lighthouse Capital	LTE	635	630	0.79	-13.72	-29.44
Massmart	MSM	5981	6000	-0.32	47.32	-1.43
Mas Real Estate Inc	MSP	1994	2002	-0.40	-4.32	-5.18
Metair	MTA	2702	2658	1.66	3.13	-1.75
Motus	MTH	12273	12343	-0.57	7.99	11.48
M&R Hold	MUR	727	777	-6.44	-39.01	-49.05
Oceana	OCE	5359	5290	1.30	-2.21	-3.51
Omnia	OMN	6686	6641	0.68	5.72	4.45
Pan African Resource	PAN	346	360	-3.89	-9.90	-9.90
Raubex	RBX	3400	3400	0.00	-2.41	-14.57
Rhodes Food Pty	RFG	1100	1137	-3.25	8.37	-10.42
Reunert	RLO	4500	4499	0.02	-3.66	-15.09
Sa Corp Real Estate	SAC	214	215	-0.47	-4.04	-8.94
Steinhoff International N.V.	SNH	191	197	-3.05	-22.36	-61.95
Super	SPG	2680	2626	2.06	-4.93	-21.20
Stor-Age Property Reit	SSS	1359	1360	-0.07	-3.62	-6.60
Stenprop	STP	3350	3390	-1.18	-3.60	-22.09
Sun Int	SUI	3112	3105	0.23	6.68	9.38
Transaction Capital	TCP	3714	3720	-0.16	-5.26	-17.52
Tsogo Sun Hotels	TGO	360	365	-1.37	-1.37	2.27
Tsogo Sun Gaming	TSG	1311	1290	1.63	11.20	12.53
Vukile	VKE	1340	1362	-1.62	-9.46	8.33
Wbhovco	WBO	7673	7338	4.57	-9.21	-32.27
Zeder Investments	ZED	190	189	0.53	5.56	-41.36

10-YEAR BOND YIELD | SELECTED ITEMS (*BASIS POINT CHANGE)

COMPANY	YIELD	1D%	1M%	YTD%
United States	3.55	-1	58	223
United Kingdom	3.29	---	88	248
Germany	1.92	---	70	224
Japan	0.24	---	6	21
South African 10Y	10.54	1	22	147

GLOBAL INTEREST RATES | SELECTED ITEMS

REGION	DATE CHANGED	CURRENT RATE
United States	27 Jul 2022	2.25%-2.50%
United Kingdom	04 Aug 2022	1.75%
European	14 Sep 2022	1.25%
SA Repo Rate	21 Jul 2022	5.50%
SA Prime Rate	21 Jul 2022	9.00%

SOUTH AFRICAN 10-YEAR BOND
2021 v 2022

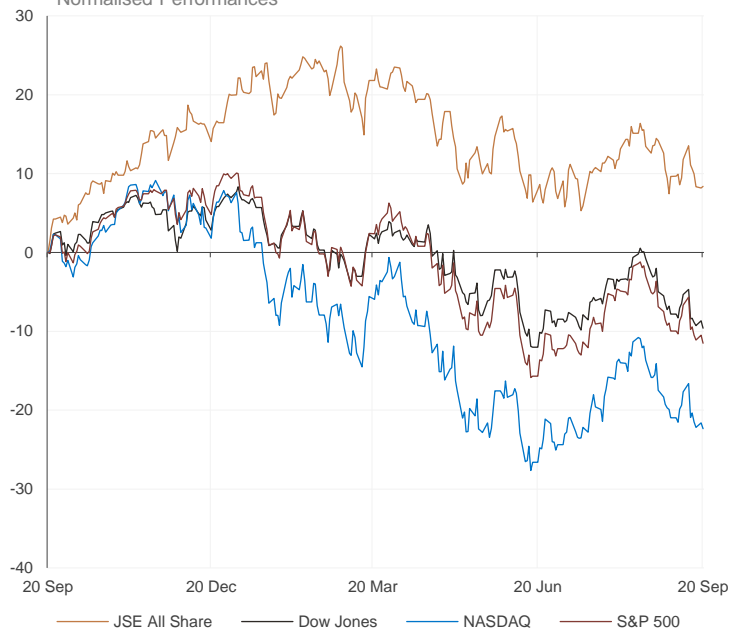


GLOBAL MARKETS

European Indices v JSE All Share Normalised Performances



US Indices v JSE All Share Normalised Performances



Asian Indices v JSE All Share Normalised Performances



EUROPEAN MARKET COMMENTARY

SELECTED HEADLINES

European markets closed lower on Tuesday, losing momentum after the previous session's broadly higher trade. The pan-European Stoxx 600 ended down 1.1% provisionally, giving back opening gains of more than 0.9%. All major bourses and most sectors were in the red by close of play, as investors awaited news on further interest rate hikes. Construction and materials led the losses, closing down 2.4%, while telecoms stocks were down 2%. Travel and leisure stocks ended slightly above the flatline.

EUROPEAN INDICES	CLOSE	PREVIOUS	1D%	5D%	1M%	YTD%
CAC 40	5979.47	6061.59	-1.35	-4.26	-7.95	-16.41
DAX 30	12670.83	12803.24	-1.03	-3.93	-6.45	-20.23
Eurostoxx 50	3467.09	3499.49	-0.93	-3.32	-7.06	-19.34
FTSE	7192.66	7236.68	-0.61	-2.62	-4.74	-2.60



AMERICAN MARKET COMMENTARY

SELECTED HEADLINES

U.S. stocks tumbled on Tuesday as the sell-off on Wall Street mounted and investors braced for another large rate hike due out Wednesday from the Federal Reserve. The Federal Open Markets Committee began its two-day policy meeting on Tuesday, where central bankers are expected to announce a 0.75 percentage point rate hike on Wednesday. In other economic news, housing market data released Tuesday showed an unexpected jump in starts for August, although building permits saw the biggest decline since April 2020.

AMERICAN INDICES	CLOSE	PREVIOUS	1D%	5D%	1M%	YTD%
Dow Jones	30706.23	31019.68	-1.01	-1.28	-8.90	-15.50
Nasdaq	11425.05	11535.02	-0.95	-1.79	-10.08	-26.97
S&P 500	3855.93	3899.89	-1.13	-1.95	-8.81	-19.10
Dollar Index	109.92	109.35	0.53	0.01	1.75	14.88
US VIX	27.16	25.76	5.43	-0.40	31.84	57.72



ASIAN MARKET COMMENTARY

SELECTED HEADLINES

Shares in the Asia-Pacific traded lower this morning, following Wall Street's negative lead ahead of the Federal Reserve's expected rate hike. Hong Kong-listed shares of Tencent Music Entertainment ticked higher in early trade after its debut in the city. Tencent Music chose to list by way of introduction, a shorter way to trade on a new exchange without raising more funds. The company joins the number of U.S.-listed Chinese companies that have debuted in Hong Kong as delisting risks rise due to tensions between Washington and Beijing.

ASIAN INDICES	CLOSE	PREVIOUS	1D%	5D%	1M%	YTD%
Hang Seng	18781.42	18565.97	1.16	-2.82	-5.01	-19.73
Nikkei 225	27688.42	27567.65	0.44	-3.24	-4.29	-3.83
Shanghai	3122.41	3115.60	0.22	-4.33	-4.16	-14.21



COMMODITIES & CURRENCIES

BRENT CRUDE (\$) last 100 days



PLATINUM (\$) last 100 days



COMMODITY MARKET COMMENTARY

SELECTED HEADLINES

Gold prices lingered near recent lows this morning as investors prepared for the likelihood of another super-sized interest rate hike from the U.S. Federal Reserve in its effort to tame soaring inflation. Oil prices ticked up today on supply concerns, but expectations of another aggressive U.S. interest rate hike capped gains amid investor concerns it could lead to a recession and hurt fuel demand.

COMMODITY	LAST	CLOSE	%CHG	1D%	5D%	YTD%
Brent Crude (\$)	90.95	91.79	-0.92	-2.70	-5.12	16.69
Gold (\$)	1664.93	1675.75	-0.65	-2.20	-4.73	-8.98
Palladium	2169.78	2228.50	-2.64	2.91	2.01	14.37
Platinum (\$)	926.00	922.00	0.43	4.63	3.00	-4.44
Silver	19.28	19.56	-1.43	-0.35	1.15	-17.31

GOLD (\$) last 100 days



COMMODITY	LAST	CLOSE	%CHG	1D%	5D%	YTD%
USDZAR	17.69	17.67	0.09	1.34	4.12	10.95
GBPZAR	20.13	20.21	-0.35	0.37	0.10	-6.61
EURZAR	17.64	17.72	-0.43	1.39	3.32	-2.73
AUDZAR	11.83	11.89	-0.45	0.72	1.20	2.10
EURUSD	1.00	1.00	-0.56	0.03	-0.66	-12.34
USDJPY	143.72	143.20	0.36	-0.58	4.96	24.86
GBPUSD	1.14	1.14	-0.45	-0.96	-3.79	-15.87

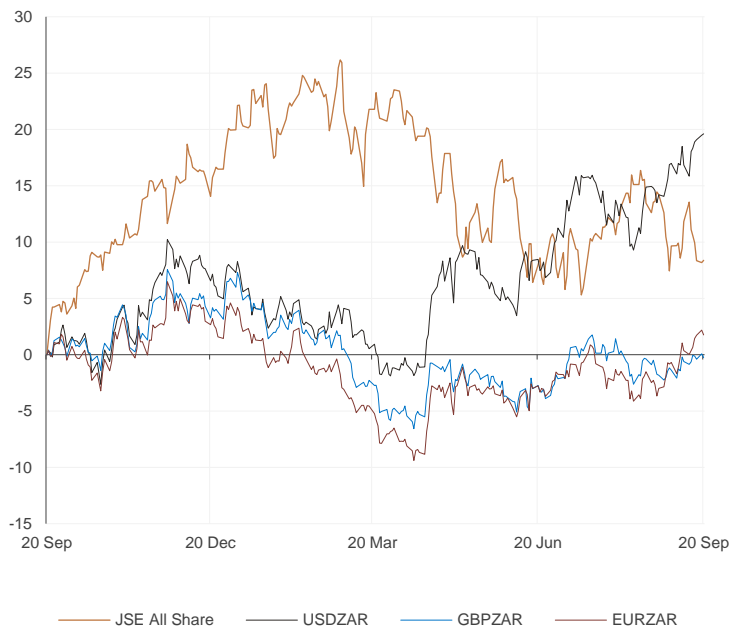
CURRENCY MARKET COMMENTARY

SELECTED HEADLINES

The rand weakened against the U.S. dollar on Tuesday as financial markets braced for this week's U.S. Federal Reserve meeting where an aggressive interest rate hike is expected. At the close of the day, the rand was trading around R17.69 to the dollar, 0.09% softer. The dollar hovered near a two-decade peak against a basket of currencies today, after yields on U.S. Treasuries leaped ahead of an interest rate decision that is likely to set the tone in financial markets for months to come.

Currencies v JSE All Share

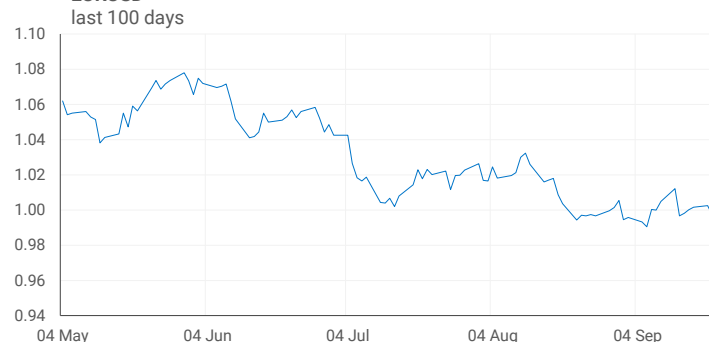
Normalised Performances



USDZAR last 100 days



EURUSD last 100 days



Sources : JSE, Moneyweb, CNBC, BBC, CNN

Disclaimer: This note is prepared for Sanlam Private Wealth (Pty) Ltd, by K2013143132 (Pty) Ltd trading as Thompson Green. Thompson Green is an independent company contracted to Sanlam Private Wealth (Pty) Ltd. The views expressed in this note are those of Thompson Green and/or its analysts and do not necessarily reflect the views of Sanlam Private Wealth (Pty) Ltd, Sanlam or any officer or agent thereof. K2013143132 (Pty) Ltd trading as Thompson Green is a research house and not a registered broker, financial advisor or financial services provider. Our editors and customer service teams also do not give personal investment advice. The information in this document is general advice only and may not be appropriate to your particular investment objectives, financial situation or particular needs, so before investing or forming any doubt about your personal situation, you should seek professional advice from a stock broker or independent financial adviser authorised by the Financial Services Board. We research, recommend and articulate thoroughly, but disclaim all liability for any inaccuracies or omissions in this publication and any trading or investment losses you may incur. Should you outperform in a financial market, we will take the credit. Thompson Green also acts as an introducer of business to Authorised Financial Services Providers. All accounts opened are held by the Authorised Registered Financial Services Provider and not Thompson Green. The information in this email is confidential and may be legally privileged. It is intended solely for the addressee. Access to this email by anyone else is unauthorised. If you are not the intended recipient, any disclosure, copying, distribution or any action taken or omitted to be taken in reliance on it, is prohibited and may be unlawful. If you are not the intended recipient please return the message to the sender and delete it from your records.