

GLOBAL OVERVIEW | SELECTED INDICES

SOUTH AFRICAN INDICES						
	CLOSE	PREVIOUS	1D%	5D%	1M%	YTD%
All Share	65276.97	66208.71	-1.41	-3.39	-5.66	-11.44
Top 40	58852.41	59817.68	-1.61	-3.51	-5.81	-12.23
Financial 15	14366.43	14501.92	-0.93	-2.15	-8.02	-2.92
Industrial 25	79383.23	81408.74	-2.49	-4.90	-6.61	-16.84
Resource 10	60516.96	60767.17	-0.41	-2.01	-2.48	-14.73
Mid Cap	74225.18	74657.69	-0.58	-2.56	-4.63	-6.87
Small Cap	68805.06	68856.69	-0.07	-2.35	-1.89	1.92
Banks	9031.80	9119.06	-0.96	-2.36	-8.62	2.37
General Retailers	6890.07	6836.41	0.78	0.03	-0.13	-8.42
Property (J253) - TR	1496.93	1507.68	-0.71	-2.66	-5.23	-11.09
AMERICAN INDICES						
	CLOSE	PREVIOUS	1D%	5D%	1M%	YTD%
Dow Jones	30076.68	30183.78	-0.35	-2.86	-9.03	-17.23
Nasdaq	11066.80	11220.19	-1.37	-4.20	-10.62	-29.26
S&P 500	3757.99	3789.93	-0.84	-3.67	-9.18	-21.15
Dollar Index	111.07	111.12	-0.04	1.25	1.99	16.08
US VIX	27.35	27.99	-2.29	4.11	14.92	58.83
EUROPEAN INDICES						
	CLOSE	PREVIOUS	1D%	5D%	1M%	YTD%
CAC 40	5918.50	6031.33	-1.87	-3.89	-7.22	-17.26
DAX 30	12531.63	12767.15	-1.84	-3.28	-5.28	-21.11
Eurostoxx 50	3427.14	3491.87	-1.85	-3.24	-6.32	-20.27
FTSE	7159.52	7237.64	-1.08	-1.68	-4.97	-3.05
ASIAN INDICES						
	CLOSE	PREVIOUS	1D%	5D%	1M%	YTD%
Hang Seng	18147.95	18444.62	-1.61	-4.13	-7.68	-22.44
Nikkei 225	27153.83	27313.13	-0.58	-2.59	-5.70	-5.69
Shanghai	3108.91	3117.18	-0.27	-2.84	-5.15	-14.59
EARLY MORNING INDICATORS						
	LAST	CLOSE	%CHG	1D%	5D%	YTD%
Tencent	3799.00	3796.00	0.08	0.00	-2.01	734.91
BHP Billiton	2764	2830	-2.33	-1.05	-5.67	-31.81

INTERNATIONAL ECONOMIC CALENDAR | SELECTED EVENTS

TIME	AREA	TODAY'S EVENTS & RELEASES	PERIOD	EXP.	PREV.
09:30	EUR	German Flash Manufacturing PMI	Sep	48.3	49.1
09:30	EUR	German Flash Services PMI	Sep	47.2	47.7
10:30	GBP	Flash Manufacturing PMI	Sep	47.4	47.3
15:45	USD	Flash Services PMI	Sep	45.5	43.7
20:00	USD	Fed Chair Powell Speaks	---	---	---
TIME	AREA	PREVIOUS SESSION'S RELEASES	PERIOD	EXP.	ACT.
13:00	GBP	Official Bank Rate	---	2.25%	2.25%
14:30	USD	Unemployment Claims	---	220K	213K
14:30	USD	Current Account	---	-261B	-251B
15:00	RSA	Interest Rate Decision	---	6.25%	6.25%
15:00	RSA	Prime Overdraft Rate	---	9.75%	9.75%

LOCAL EQUITIES | JSE ALL SHARE COMPANIES

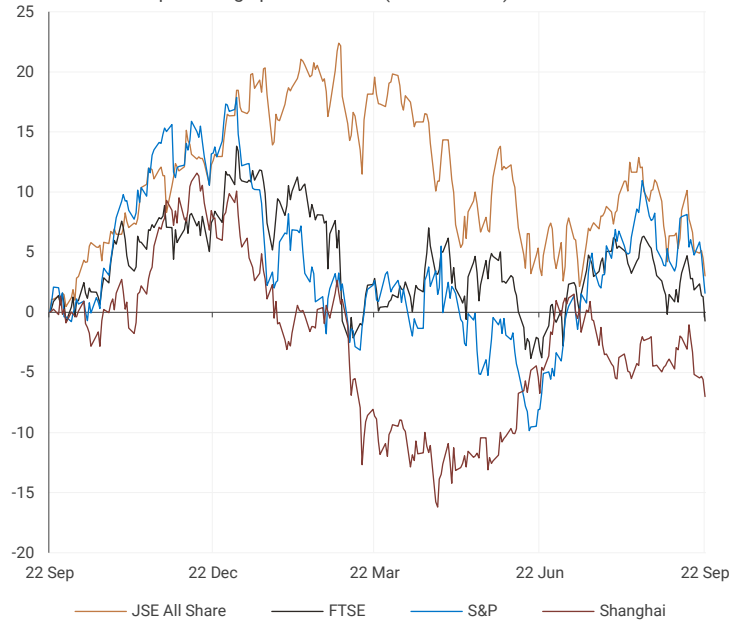
BEST ONE-DAY & PERFORMERS						
	CODE	CLOSE	1D%	5D%	YTD%	
City Lodge Hotels Ltd	CLH	402	6.63	-6.51	-25.69	
PPC Limited	PPC	260	6.56	1.17	-48.51	
Rand Merchant Inv Hldgs Ltd	RMI	2975	4.39	6.82	42.40	
Omnia Holdings Ltd	OMN	6968	4.09	10.34	8.86	
Gold Fields Ltd	GFI	13613	3.49	1.31	-21.83	
WORST ONE-DAY & PERFORMERS						
	CODE	CLOSE	1D%	5D%	YTD%	
Bytes Technology Group	BYI	8369	-5.75	-3.44	-31.43	
Liberty Two Degrees LTD	L2D	465	-4.91	-7.00	-2.11	
Italtile Ltd	ITE	1490	-4.79	0.20	-11.31	
Northam Platinum Hldgs Ltd	NPH	14810	-4.72	-7.33	-29.31	
Naspers Ltd -N-	NPN	226893	-4.47	-8.00	-8.21	

DIVIDEND DATA

COMPANY	CODE	DIVIDEND	COMPANY	CODE	DIVIDEND
Shoprite Holdings	SHP	367 ZARc	NEPI Rockcastle	NRP	22.83 EURc
Exxaro Resources	EXX	1593 ZARc	British American Tobacco	BTI	54.45 GBPp
African Rainbow Minerals	ARI	2000 ZARc			
Attacq	ATT	50 ZARc			
Bidvest Group	BVT	364 ZARc			

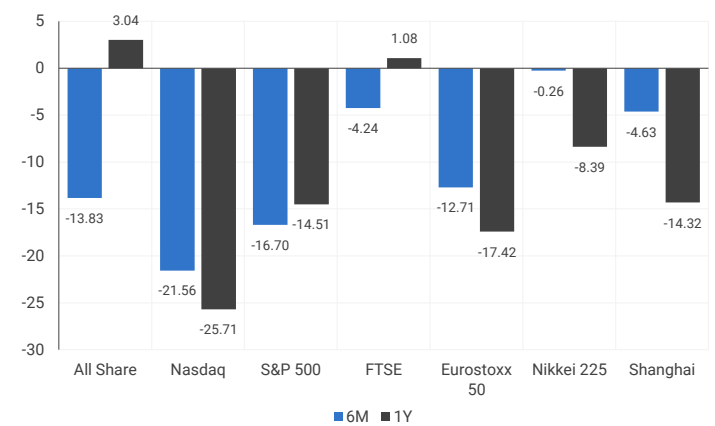
INTERNATIONAL INDICES

normalised percentage performances (in rand terms)

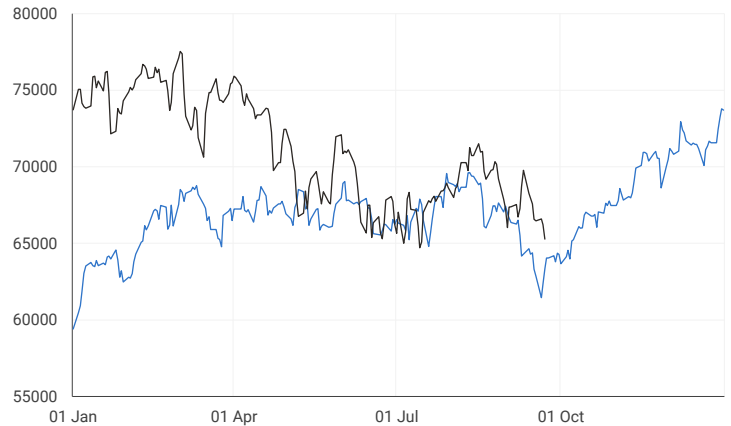


INTERNATIONAL INDICES

6-month & 1-year percentage performances



JSE ALL SHARE INDEX
2021 V 2022



Last date to trade 27 Sep

LOCAL EQUITIES | JSE LARGE CAP COMPANIES (CENTS PER SHARE)

COMPANY	CLOSE	PREVIOUS	1D%	5D%	1M%	YTD%
Absa Group	18203	18300	-0.53	-0.15	-1.32	19.32
Anglo	56336	56626	-0.51	-0.32	-0.79	-13.56
Angloplat	122469	123488	-0.83	-4.45	5.53	-32.59
Anglo Gold Ashanti	22848	22392	2.04	-0.04	-9.61	-30.49
Anheuser-Busch Inbev	85700	86746	-1.21	-0.40	-1.68	-10.98
Bhp Group Plc	45079	45121	-0.09	-0.61	-6.51	-4.97
Bid Corp	28902	29388	-1.65	-6.20	-10.81	-11.46
British American Tobacco Plc	68798	69598	-1.15	-0.73	-1.95	17.42
Compagnie Financiere	17663	18315	-3.56	-6.74	-8.48	-26.82
Capitec	164906	170000	-3.00	-6.83	-20.85	-19.16
Discovery	10917	11022	-0.95	0.35	-18.35	-23.96
Firststrand	6296	6353	-0.90	-3.17	-7.44	3.55
Goldfields	13613	13154	3.49	1.31	-8.05	-21.83
Glencore Plc	9735	9789	-0.55	-3.42	-0.78	19.96
Implats	17625	18051	-2.36	-10.14	0.95	-21.67
Kumba Iron Ore	37907	37475	1.15	-1.03	-7.90	-17.61
Mondi Plc	28039	28335	-1.04	-5.55	-8.53	-29.04
Mtn Group	12724	12765	-0.32	-2.38	-7.41	-25.46
Naspers -N	226893	237500	-4.47	-8.00	-7.26	-8.21
Prosus Nv	95437	99879	-4.45	-7.75	-10.15	-27.13
Stanbank	14621	14627	-0.04	-1.04	-9.11	4.43
Shoprite	22216	22531	-1.40	-0.99	-5.86	6.36
Sanlam	5336	5440	-1.91	-3.44	-7.36	-10.11
Sasol	31420	31785	-1.15	-1.40	-5.35	21.31
Sibanye Stillwater	3868	3861	0.18	-2.59	0.36	-21.22
Vodacom Group	12610	12778	-1.31	-2.69	-5.79	-6.33

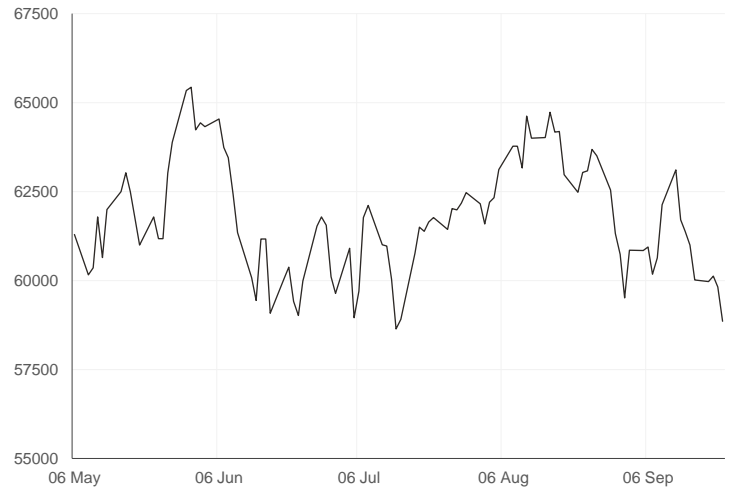
SOUTH AFRICAN MARKET COMMENTARY

SELECTED HEADLINES

Stocks on the Johannesburg Stock Exchange (JSE) closed lower, mostly due to declines in the industrial index. The benchmark All-Share index closed 1.41% lower at 65,276 points, while the Top-40 index fell 1.61% to 58,852 points. The central bank hiked its main lending rate by 75 basis points (bps) to 6.25%, in line with the forecast of the majority of economists polled by Reuters, to bring inflation back to target. The South African Reserve Bank (SARB) has now hiked rates by a cumulative 275 bps since November last year in a bid to bring inflation back within its 3% to 6% target range.

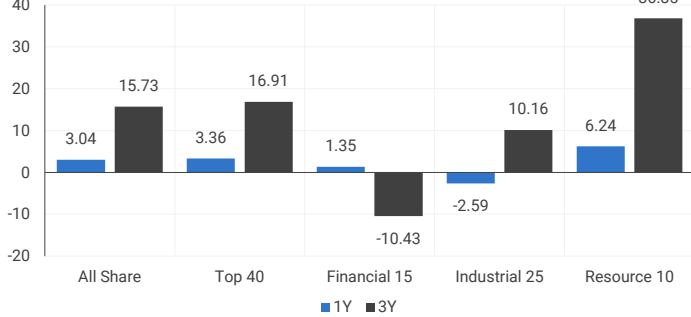
JSE TOP 40 INDEX

last 100 days



LOCAL INDICES

1-year & 3-year percentage performances



LOCAL INDICES

Normalised % performances comparison



EXPECTED COMPANY REPORTING SCHEDULE

COMPANY	CODE	RELEASE	DATE
Remgro	REM	Final	27 Sep
Lonfin	LNF	Final	27 Sep
Alviva	AVV	Final	28 Sep
Capitec Bank	CPI	Interim	29 Sep
Hyprop Investments	HYP	Final	29 Sep

BANK AND OTHER SELECTED PREFERENCE SHARES

COMPANY	CODE	CODE	CLEAN YIELD	APPROX. NEXT LDT
Investec Limited	INPR	8975	7.68	07 Dec 2022
Standard Bank	SBPP	9400	7.77	07 Sep 2022
Absa	ABSP	93000	7.10	14 Sep 2022
Capitec	CPIP	9022	7.50	14 Sep 2022
Steinhoff	SHFF	7624	9.98	19 Oct 2022
Grindrod	GNDP	9350	8.72	20 Sep 2022
Netcare	NTCP	8350	9.14	02 Nov 2022
Discovery	DSBP	9680	9.86	20 Sep 2022
Invicta	IVTP	9800	10.21	23 Nov 2022

SENS ANNOUNCEMENTS

SELECTED RELEASES

RAND MERCHANT INVESTMENT HOLDINGS LIMITED – Summary results announcement

Both strategically and structurally, landmark decisions were made to unbundle its shareholdings in two strong South African life insurance brands, Discovery and Momentum Metropolitan, sell its investment in the lucrative British market, Hastings, and not to continue with an active investment strategy and further geographic expansion but to embark on an orderly and managed transition to a structure that represents an effective listing of OUTsurance.

RMI has unlocked significant value for shareholders as a direct result of these strategic decisions:

As at 30 June 2021, RMI's market capitalisation was R48 billion. One year later, as at 30 June 2022, RMI's market capitalisation was R42.6 billion after the unbundling of its interests in Discovery and Momentum Metropolitan with a combined market value of R34.6 billion as at the time of the unbundling. In addition to this, RMI paid a special dividend of R2.2 billion and a normal dividend of R1 billion. RMI's total shareholder return since listing in 2011 amounts to 453.5%.

On 8 December 2021, RMI announced the sale of the group's 30% shareholding in Hastings. The shares were jointly held by RMI (51%) and OUTsurance (49%) via Main Street 1353 Proprietary Limited (Main Street). The sale price represented a premium of 37% to the price at which Hastings was privatised in November 2020 and an internal rate of return for RMI's investment in Hastings of 18.4% in Rand terms (R8.5 billion, including dividends) and 12.5% in Pound terms – well in excess of RMI's return requirements. The sale therefore represented an opportunity to monetise the investment in Hastings at an attractive valuation.

On 25 April 2022, RMI finalised the unbundling of its shareholdings in Discovery and Momentum Metropolitan. When announcing the unbundling on 20 September 2021, it was envisaged that a rights issue of approximately R6.5 billion would be required before the unbundling could be finalised to reduce debt to a level that would be appropriate for the reduced size of the balance sheet post-unbundling. The sales proceeds from Hastings were utilised to repay all the preference share debt and therefore negated the need for a rights issue.

Move | 4.39% Open | 2839c Close | 2975c High | 2975c Low | 2810c

LOCAL EQUITIES | JSE MID CAP COMPANIES (CENTS PER SHARE)

COMPANY	CODE	CLOSE	PREVIOUS	1D%	1M%	YTD%
Aspen	APN	13760	13676	0.61	-7.72	-38.69
African Rainbow	ARI	27260	27338	-0.29	17.98	17.90
Avi	AVI	7359	7330	0.40	2.12	-0.42
Barworld	BAW	9014	8920	1.05	-4.03	-40.05
Bidvest Group	BVT	21653	22089	-1.97	-4.46	14.29
Capco	CCO	2255	2335	-3.43	-13.60	-37.76
Clicks Group	CLS	28279	28546	-0.94	-7.65	-10.38
Coronation	CML	3085	3124	-1.25	-8.51	-41.28
Dis-Chem	DCP	3236	3233	0.09	-9.15	-8.64
Distell Group	DGH	17651	17664	-0.07	2.18	4.57
Drdgold	DRD	955	952	0.32	-6.65	-27.65
Exxaro Resources	EXX	23315	22901	1.81	4.92	52.52
Fortress Reit A	FFA	938	945	-0.74	-12.34	-24.96
Fortress Reit B	FFB	420	423	-0.71	0.00	29.23
Growthpoint	GRT	1254	1267	-1.03	-5.71	-18.41
Harmony Gold	HAR	3696	3615	2.24	-31.58	-44.50
Investec	INL	8000	8015	-0.19	-3.90	-8.62
Investec	INP	8003	8000	0.04	-5.25	-7.68
Italtile	ITE	1490	1565	-4.79	-0.33	-11.31
Life Healthcare	LHC	1678	1690	-0.71	-18.94	-30.17
Multichoice Group	MCG	11520	11402	1.03	-4.79	-5.60
Mediclinic Int.	MEI	9776	9903	-1.28	-1.28	43.64
Montauk Renewables	MKR	31650	31903	-0.79	17.30	84.01
Mr Price Group	MRP	18283	18459	-0.95	-5.15	-8.36
Momentum	MTM	1775	1766	0.51	4.53	-6.33
Ninety One Plc	N91	3880	4022	-3.53	-5.76	-32.50
Nedbank	NED	20713	21004	-1.39	-3.44	18.35
Northam Platinum	NHM	14810	15543	-4.72	-10.74	-29.31
Nepi Rockcastle Plc	NRP	9180	9200	-0.22	-1.90	-13.40
Netcare	NTC	1318	1329	-0.83	-15.13	-17.00
Ninety One	NY1	3748	3899	-3.87	-8.29	-33.68
Old Mutual	OMU	1021	1041	-1.92	-10.52	-22.06
Pik N Pay	PIK	5671	5690	-0.33	-8.84	8.08
Pepkor	PPH	2095	2076	0.92	3.05	-4.29
Psg	PSG	2295	2295	0.00	-73.87	-74.28
Quilter Plc	QLT	1970	2000	-1.50	-6.19	-37.82
Rbplapts	RBP	14333	14688	-2.42	0.22	-8.31
Redefine	RDF	363	368	-1.36	-8.56	-17.50
Remgro	REM	13136	13352	-1.62	-1.71	0.16
Resilient Reit	RES	5114	5125	-0.21	-7.91	-14.41
Rand Merchant Inv	RMI	2975	2850	4.39	5.80	42.40
Reinet Investments Sca	RNI	29114	28804	1.08	0.70	1.79
Sappi	SAP	4228	4245	-0.40	-19.77	-7.40
Santam	SNT	24100	24306	-0.85	-3.07	-10.41
Spar	SPP	14301	14484	-1.26	-9.21	-14.43
Sirius Real Estate	SRE	1520	1520	0.00	-12.29	-49.88
Tigebrands	TBS	16368	16352	0.10	-5.03	-9.57
The Foschini Group	TFG	12146	12346	-1.62	-8.06	-1.97
Thungela Resources	TGA	32921	31829	3.43	-2.03	289.41
Telkom	TKG	4858	4815	0.89	4.41	-10.17
Truworths	TRU	5250	5372	-2.27	-9.61	0.48
Textainer	TXT	52018	53650	-3.04	-4.73	-9.53
Woolies	WHL	6310	6326	-0.25	19.06	21.67

LOCAL EQUITIES | JSE SMALL CAP COMPANIES (CENTS PER SHARE)

COMPANY	CODE	CLOSE	PREVIOUS	1D%	1M%	YTD%
Advtech	ADH	1787	1776	0.62	9.50	1.65
Altron	AEL	890	905	-1.66	3.97	-2.73
Aeci	AFE	8501	8492	0.11	-1.70	-24.10
Alexander Forbes	AFH	472	493	-4.26	3.96	5.12
Afrimat	AFT	4888	4900	-0.24	-2.82	-14.89
Arrowhead Prop.	AHB	322	325	-0.92	-1.23	-24.24
African Rainbow Cap.	AIL	624	629	-0.79	5.76	-8.24
Adcock Ingram	AIP	4588	4655	-1.44	-7.31	-9.06
Astral	ARL	19290	19000	1.53	-6.64	11.73
Attacq	ATT	675	690	-2.17	8.00	-15.52
Brait	BAT	420	408	2.94	0.48	-7.08
Blue Label Telecoms	BLU	643	625	2.88	-10.20	26.33
Bytes Technology	BYI	8369	8880	-5.75	-7.02	-31.43
City Lodge Hotels	CLH	402	377	6.63	-7.37	-25.69
Curro	COH	913	903	1.11	-16.24	-26.67
Cashbuild	CSB	20971	20634	1.63	-14.58	-19.65
Datatec	DTC	4499	4414	1.93	0.25	16.86
Emira	EMI	1039	1021	1.76	-1.05	9.37
Equites Property Fund	EQU	1759	1775	-0.90	-8.10	-23.49
Famous Brands	FBR	5682	5626	1.00	-3.04	-27.30
Gindrod	GND	1026	1017	0.88	-7.57	107.27
Hci	HCI	17688	17660	0.16	2.77	139.03
Hudaco	HDC	13362	13200	1.23	-6.23	1.34
Hammerson Plc	HMN	423	423	0.00	-10.38	-41.17
Hyprop	HYP	3600	3613	-0.36	-4.33	-3.36
Investec Prop Fund	IPF	1062	1061	0.09	-0.19	-14.35
Jse	JSE	10350	10401	-0.49	-6.83	-7.59
Kap Industrial	KAP	395	403	-1.99	-11.43	-9.61
Karooooo	KRO	43500	44000	-1.14	-1.69	-18.69
Psg Konsult	KST	1070	1072	-0.19	-7.76	-20.39
Liberty Two Degrees	L2D	465	489	-4.91	8.90	-2.11
Libstar	LBR	607	604	0.50	13.04	-8.72
Lighthouse Capital	LTE	620	630	-1.59	-14.13	-31.11
Massmart	MSM	6081	6000	1.35	41.09	0.21
Mas Real Estate Inc	MSP	1881	1878	0.16	-8.56	-10.56
Metair	MTA	2690	2684	0.22	0.75	-2.18
Motus	MTH	11738	11916	-1.49	-0.06	6.62
M&R Hold	MUR	716	714	0.28	-39.32	-49.82
Oceana	OCE	5588	5469	2.18	3.10	0.61
Omnia	OMN	6968	6694	4.09	13.14	8.86
Pan African Resource	PAN	337	336	0.30	-11.32	-12.24
Raubex	RBX	3438	3484	-1.32	0.26	-13.62
Rhodes Food Pty	RFG	1177	1177	0.00	13.06	-4.15
Reunert	RLO	4375	4464	-1.99	-5.65	-17.45
Sa Corp Real Estate	SAC	211	210	0.48	-1.86	-10.21
Steinhoff International N.V.	SNH	181	188	-3.72	-25.51	-63.94
Super	SPG	2688	2714	-0.96	-3.55	-20.96
Stor-Age Property Reit	SSS	1316	1325	-0.68	-6.00	-9.55
Stenprop	STP	3200	3278	-2.38	-7.97	-25.58
Sun Int	SUI	3232	3179	1.67	7.91	13.60
Transaction Capital	TCP	3837	3842	-0.13	1.37	-14.79
Tsogo Sun Hotels	TGO	364	365	-0.27	-0.27	3.41
Tsogo Sun Gaming	TSG	1269	1290	-1.63	8.83	8.93
Vukile	VKE	1288	1309	-1.60	-10.31	4.12
Wbhovco	WBO	7700	7694	0.08	-8.33	-32.03
Zeder Investments	ZED	190	194	-2.06	8.57	-41.36

10-YEAR BOND YIELD | SELECTED ITEMS (*BASIS POINT CHANGE)

COMPANY	YIELD	1D%	1M%	YTD%
United States	3.71	---	67	228
United Kingdom	3.49	---	92	258
Germany	1.96	---	65	222
Japan	0.22	---	2	19
South African 10Y	10.59	8	25	148

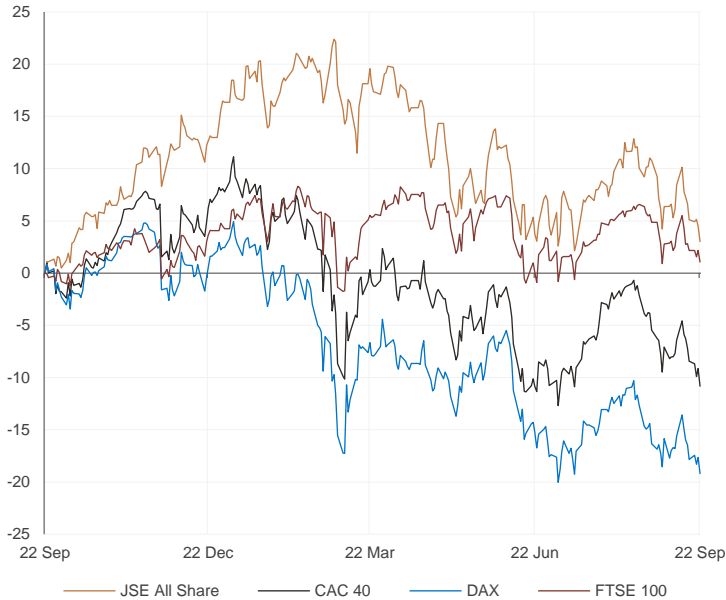
GLOBAL INTEREST RATES | SELECTED ITEMS

REGION	DATE CHANGED	CURRENT RATE
United States	21 Sep 2022	3%-3.25%
United Kingdom	23 Sep 2022	2.25%
European	14 Sep 2022	1.25%
SA Repo Rate	23 Sep 2022	6.25%
SA Prime Rate	23 Sep 2022	9.75%

SOUTH AFRICAN 10-YEAR BOND
2021 v 2022


GLOBAL MARKETS

European Indices v JSE All Share
Normalised Performances



US Indices v JSE All Share
Normalised Performances



Asian Indices v JSE All Share
Normalised Performances



EUROPEAN MARKET COMMENTARY

SELECTED HEADLINES

European stocks closed lower Thursday, as investors digested news from the U.S. Federal Reserve, Swiss central bank, and Bank of England as they opted to hike rates. The pan-European Stoxx 600 closed down 1.8% with all sectors and major bourses in negative territory except banks and basic resources, which were flat. Technology and travel stocks were trading at the bottom of the Stoxx 600, falling 4.24% and 3.2%, respectively. The Bank of England voted to raise interest rates by 50 basis points, lower than the 75-basis point rise expected by some analysts.

EUROPEAN INDICES	CLOSE	PREVIOUS	1D%	5D%	1M%	YTD%
CAC 40	5918.50	6031.33	-1.87	-3.89	-7.22	-17.26
DAX 30	12531.63	12767.15	-1.84	-3.28	-5.28	-21.11
Eurostoxx 50	3427.14	3491.87	-1.85	-3.24	-6.32	-20.27
FTSE	7159.52	7237.64	-1.08	-1.68	-4.97	-3.05



AMERICAN MARKET COMMENTARY

SELECTED HEADLINES

U.S. stocks on Thursday posted their third straight daily decline, as mounting fears that the Federal Reserve's aggressive rate hikes will push the economy into a recession dented risk appetite for investors. Bond yields surged again on Thursday, with the yields on the 10-year and 2-year Treasury notes notching fresh multiyear highs, hitting their highest levels since February 2011 and October 2007, respectively. Growth-oriented tech stocks and semiconductors took a leg lower on Thursday amid fears of slowing economic growth.

AMERICAN INDICES	CLOSE	PREVIOUS	1D%	5D%	1M%	YTD%
Dow Jones	30076.68	30183.78	-0.35	-2.86	-9.03	-17.23
Nasdaq	11066.80	11220.19	-1.37	-4.20	-10.62	-29.26
S&P 500	3757.99	3789.93	-0.84	-3.67	-9.18	-21.15
Dollar Index	111.07	111.12	-0.04	1.25	1.99	16.08
US VIX	27.35	27.99	-2.29	4.11	14.92	58.83



ASIAN MARKET COMMENTARY

SELECTED HEADLINES

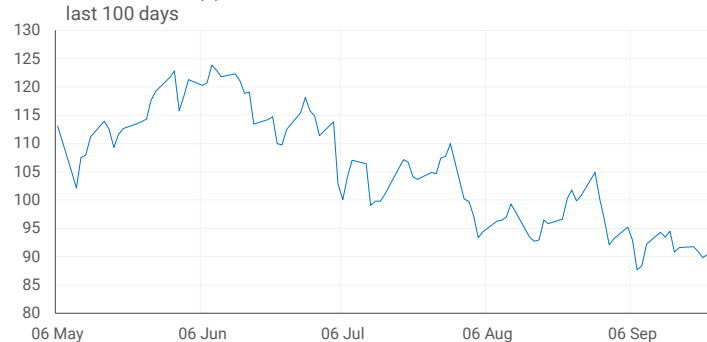
Asia-Pacific shares fell this morning as investors continue to weigh the Federal Reserve's aggressive stance. Meanwhile, core inflation in Singapore is expected to rise to 5% in August from a year ago, up from 4.8% in July, according to a Reuters poll of economists. Headline inflation is set to increase to 7.2%, compared with July's 7% print. In neighbouring Malaysia, the consumer price index for August is predicted to rise to 4.7%, a faster pace than July's 4.4%, another Reuters poll forecasts.

ASIAN INDICES	CLOSE	PREVIOUS	1D%	5D%	1M%	YTD%
Hang Seng	18147.95	18444.62	-1.61	-4.13	-7.68	-22.44
Nikkei 225	27153.83	27313.13	-0.58	-2.59	-5.70	-5.69
Shanghai	3108.91	3117.18	-0.27	-2.84	-5.15	-14.59



COMMODITIES & CURRENCIES

BRENT CRUDE (\$) last 100 days



PLATINUM (\$) last 100 days



COMMODITY MARKET COMMENTARY

SELECTED HEADLINES

Gold prices were flat this morning as the dollar held close to its recent peak while the likelihood of more aggressive interest rate hikes by the U.S. Federal Reserve also weighed on the appeal for non-yielding bullion. Oil prices fell earlier today amid recession fears and a stronger U.S. dollar, though losses were capped by supply concerns after Moscow's new mobilization campaign in its war with Ukraine and an apparent deadlock in talks on reviving the Iran nuclear deal.

COMMODITY	LAST	CLOSE	%CHG	1D%	5D%	YTD%
Brent Crude (\$)	90.38	89.84	0.60	-0.47	-6.49	15.96
Gold (\$)	1671.33	1673.84	-0.15	0.40	-4.07	-8.63
Palladium	2170.79	2159.00	0.55	1.46	1.70	14.42
Platinum (\$)	904.50	911.70	-0.79	-0.39	1.34	-6.66
Silver	19.63	19.56	0.36	2.44	3.32	-15.79

GOLD (\$) last 100 days



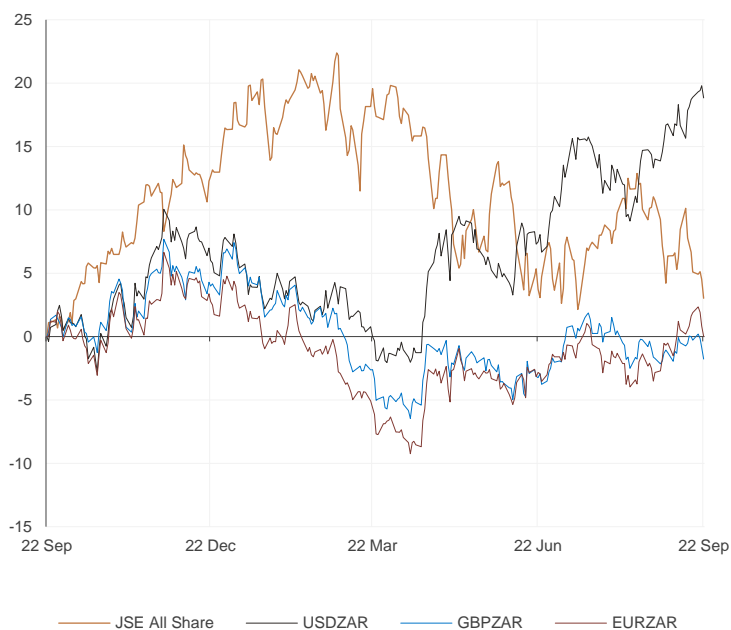
COMMODITY	LAST	CLOSE	%CHG	1D%	5D%	YTD%
USDZAR	17.60	17.74	-0.80	0.11	3.57	10.41
GBPZAR	19.81	19.99	-0.92	-1.77	-0.99	-8.11
EURZAR	17.31	17.45	-0.81	-1.57	2.40	-4.55
AUDZAR	11.69	11.76	-0.59	-0.77	0.02	0.90
EURUSD	0.98	0.98	0.00	-1.62	-1.05	-13.49
USDJPY	142.37	144.08	-1.19	-0.78	3.53	23.69
GBPUSD	1.13	1.13	-0.12	-1.84	-4.35	-16.80

CURRENCY MARKET COMMENTARY

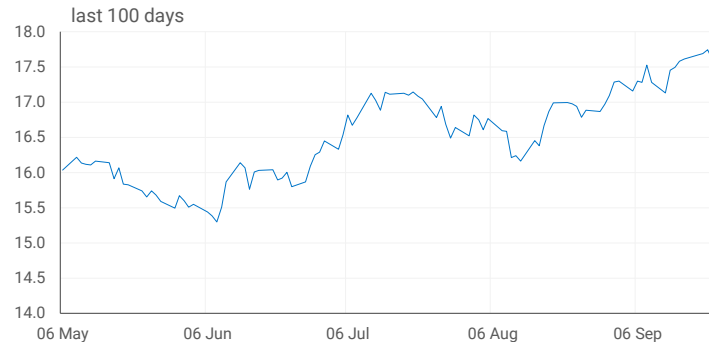
SELECTED HEADLINES

The rand strengthened on Thursday after the central bank hiked its main lending rate. At the close of the day, the rand was trading around R17.60 to the dollar, 0.8% firmer. The yen was on track for its first weekly gain in more than a month today after Japanese authorities intervened in foreign exchange markets for the first time since 1998, while a towering dollar kept other currencies pinned near multi-year lows.

Currencies v JSE All Share Normalised Performances



USDZAR last 100 days



EURUSD last 100 days



Sources : JSE, Moneyweb, CNBC, BBC, CNN

Disclaimer: This note is prepared for Sanlam Private Wealth (Pty) Ltd, by K2013143132 (Pty) Ltd trading as Thompson Green. Thompson Green is an independent company contracted to Sanlam Private Wealth (Pty) Ltd. The views expressed in this note are those of Thompson Green and/or its analysts and do not necessarily reflect the views of Sanlam Private Wealth (Pty) Ltd, Sanlam or any officer or agent thereof. K2013143132 (Pty) Ltd trading as Thompson Green is a research house and not a registered broker, financial advisor or financial services provider. Our editors and customer service teams also do not give personal investment advice. The information in this document is general advice only and may not be appropriate to your particular investment objectives, financial situation or particular needs, so before investing or forming any doubt about your personal situation, you should seek professional advice from a stockbroker or independent financial adviser authorised by the Financial Services Board. We research, recommend and articulate thoroughly, but disclaim all liability for any inaccuracies or omissions in this publication and any trading or investment losses you may incur. Should you outperform, we will take the credit. Thompson Green also acts as an introducer of business to Authorised Financial Services Providers. All accounts opened are held by the Authorised Registered Financial Services Provider and not Thompson Green. The information in this email is confidential and may be legally privileged. It is intended solely for the addressee. Access to this email by anyone else is unauthorised. If you are not the intended recipient, any disclosure, copying, distribution or any action taken or omitted to be taken in reliance on it, is prohibited and may be unlawful. If you are not the intended recipient please return the message to the sender and delete it from your records.