

GLOBAL OVERVIEW | SELECTED INDICES

SOUTH AFRICAN INDICES						
	CLOSE	PREVIOUS	1D%	5D%	1M%	YTD%
All Share	69640.23	69011.45	0.91	3.75	6.04	-5.52
Top 40	63027.83	62408.05	0.99	4.16	6.32	-6.00
Financial 15	15875.32	15866.76	0.05	2.04	12.82	7.27
Industrial 25	81484.10	81157.92	0.40	2.36	2.49	-14.64
Resource 10	68375.13	66549.97	2.74	8.55	8.03	-3.66
Mid Cap	78620.08	78488.83	0.17	1.45	6.87	-1.36
Small Cap	70252.10	70017.09	0.34	2.04	3.31	4.06
Banks	10179.27	10186.77	-0.07	2.01	14.26	15.38
General Retailers	6983.43	6858.38	1.82	1.93	1.77	-7.17
Property (J253) - TR	1609.15	1594.14	0.94	3.37	10.68	-4.43
AMERICAN INDICES						
	CLOSE	PREVIOUS	1D%	5D%	1M%	YTD%
Dow Jones	32513.94	33160.83	-1.95	1.14	10.98	-10.52
Nasdaq	10353.17	10616.20	-2.48	-1.63	-2.81	-33.82
S&P 500	3748.57	3828.11	-2.08	-0.30	2.99	-21.35
Dollar Index	110.21	109.53	0.62	-1.61	-2.15	15.17
US VIX	26.09	25.54	2.15	0.89	-16.80	51.51
EUROPEAN INDICES						
	CLOSE	PREVIOUS	1D%	5D%	1M%	YTD%
CAC 40	6430.57	6441.50	-0.17	2.45	9.61	-10.10
DAX 30	13666.32	13688.75	-0.16	3.09	11.35	-13.97
Eurostoxx 50	3728.03	3739.28	-0.30	2.93	10.45	-13.27
FTSE	7296.25	7306.14	-0.14	2.13	4.36	-1.20
ASIAN INDICES						
	CLOSE	PREVIOUS	1D%	5D%	1M%	YTD%
Hang Seng	16358.52	16557.31	-1.20	3.36	-7.79	-30.08
Nikkei 225	27716.43	27872.11	-0.56	0.19	2.21	-3.73
Shanghai	3048.17	3064.49	-0.53	1.49	0.79	-16.25
EARLY MORNING INDICATORS						
	LAST	CLOSE	%CHG	1D%	5D%	YTD%
Tencent	232.20	236.80	-1.94	-3.66	2.69	-47.92
BHP Billiton	4067	4118	-1.24	2.06	4.94	-0.77

INTERNATIONAL ECONOMIC CALENDAR | SELECTED EVENTS

TIME	AREA	TODAY'S EVENTS & RELEASES	PERIOD	EXP.	PREV.
11:30	RSA	Mining Production YoY	Sep	-4.60%	-5.90%
11:30	RSA	Gold Production YoY	Sep	-15.70%	-17.40%
13:00	RSA	Manufacturing Production YoY	Sep	-3.10%	1.40%
15:30	USD	CPI y/y	Oct	7.90%	8.20%
15:30	USD	Unemployment Claims	---	220K	217K
TIME	AREA	PREVIOUS SESSION'S RELEASES	PERIOD	EXP.	ACT.
17:00	USD	Final Wholesale Inventories m/m	Sep	0.80%	0.60%
17:30	USD	Crude Oil Inventories	---	0.3M	3.9M
---	---	---	---	---	---
---	---	---	---	---	---
---	---	---	---	---	---

LOCAL EQUITIES | JSE ALL SHARE COMPANIES

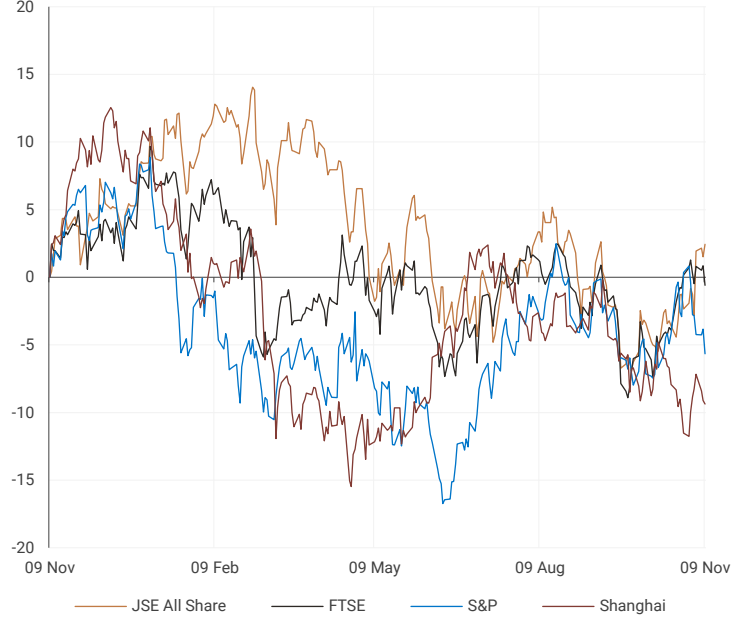
BEST ONE-DAY & PERFORMERS						
	CODE	CLOSE	1D%	5D%	YTD%	
Gold Fields Ltd	GFI	18450	21.06	29.17	5.95	
Anglogold Ashanti Ltd	ANG	29518	10.31	24.07	-10.20	
Royal Bafokeng Platinum Ltd	RBP	16700	10.21	11.14	6.83	
DRD Gold Ltd	DRD	1093	9.19	8.11	-17.20	
Harmony GM Co Ltd	HAR	5744	8.52	13.52	-13.75	
WORST ONE-DAY & PERFORMERS						
	CODE	CLOSE	1D%	5D%	YTD%	
Zeder Inv Ltd	ZED	168	-7.69	-8.70	-48.15	
Northam Platinum Hldgs Ltd	NPH	17800	-6.06	-3.36	-15.04	
Montauk Renewables Inc	MKR	23200	-5.88	-14.61	34.88	
Thungela Resources Ltd	TGA	25600	-5.12	-6.29	202.82	
Murray & Roberts Hldgs	MUR	520	-4.06	21.50	-63.56	

DIVIDEND DATA

COMPANY	CODE	DIVIDEND	COMPANY	CODE	DIVIDEND
Octodec Investments	OCT	80 ZARc			
MiX Telematics	MIX	4 ZARc			
Tradehold	TDH	434 ZARc			
Bytes Technology	BYI	2.4 GBPp			

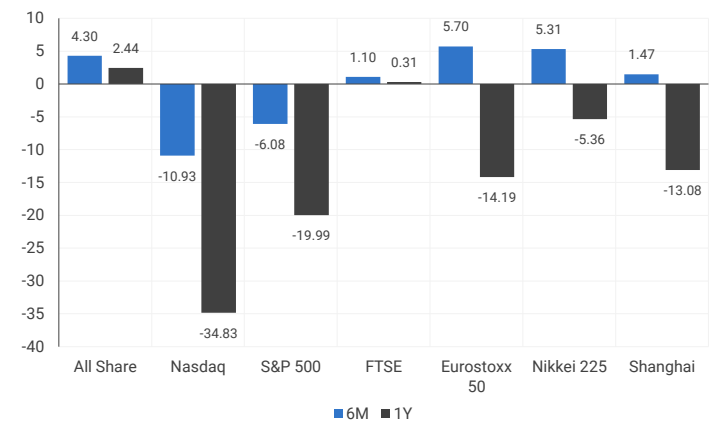
INTERNATIONAL INDICES

normalised percentage performances (in rand terms)



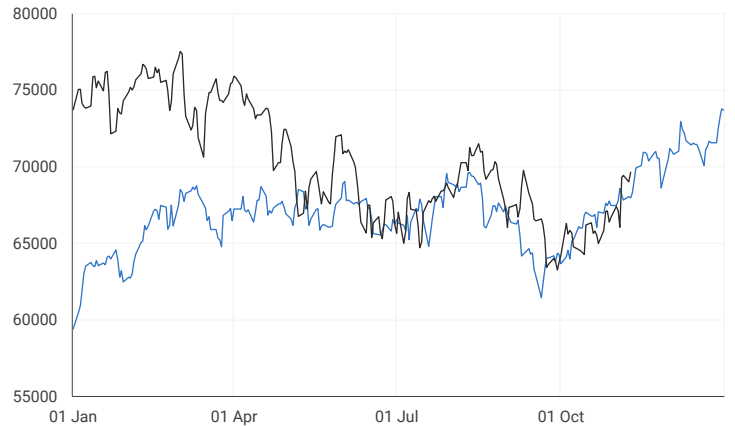
INTERNATIONAL INDICES

6-month & 1-year percentage performances



JSE ALL SHARE INDEX

2021 V 2022



Last date to trade 15 Nov

LOCAL EQUITIES | JSE LARGE CAP COMPANIES (CENTS PER SHARE)

COMPANY	CLOSE	PREVIOUS	1D%	5D%	1M%	YTD%
Absa Group	19777	20075	-1.48	-0.10	13.03	29.64
Anglo	61810	61059	1.23	9.46	10.65	-5.16
Angloplat	160752	157826	1.85	6.08	12.82	-11.52
Anglo Gold Ashanti	29518	26758	10.31	24.07	11.34	-10.20
Anheuser-Busch Inbev	92916	93381	-0.50	2.07	12.27	-3.48
Bhp Group Plc	47109	46913	0.42	6.00	0.88	-0.70
Bid Corp	29881	29883	-0.01	1.78	4.22	-8.46
British American Tobacco Plc	68900	68452	0.65	0.17	3.60	17.59
Compagnie Financiere	18690	18414	1.50	3.31	4.23	-22.56
Capitec	191441	194030	-1.33	-1.32	8.28	-6.15
Discovery	12429	12346	0.67	1.71	19.17	-13.43
Firststrand	6678	6595	1.26	4.18	9.75	9.84
Goldfields	18450	15240	21.06	29.17	17.16	5.95
Glencore Plc	10555	10643	-0.83	-1.82	6.18	30.07
Implats	20144	20148	-0.02	1.06	11.47	-10.47
Kumba Iron Ore	41760	41026	1.79	17.29	2.86	-9.24
Mondi Plc	31404	31181	0.72	3.56	15.02	-20.53
Mtn Group	13538	13504	0.25	2.55	13.40	-20.70
Naspers -N	210620	214630	-1.87	2.48	-11.08	-14.80
Prosus Nv	86890	87994	-1.25	2.01	-11.04	-33.66
Stanbank	17703	17725	-0.12	2.87	22.37	26.44
Shoprite	23694	23463	0.98	1.34	10.20	13.43
Sanlam	5369	5353	0.30	0.73	7.55	-9.55
Sasol	30425	30715	-0.94	6.01	-4.48	17.47
Sibanye Stillwater	4468	4270	4.64	2.50	0.84	-9.00
Vodacom Group	12855	12668	1.48	2.59	5.37	-4.51

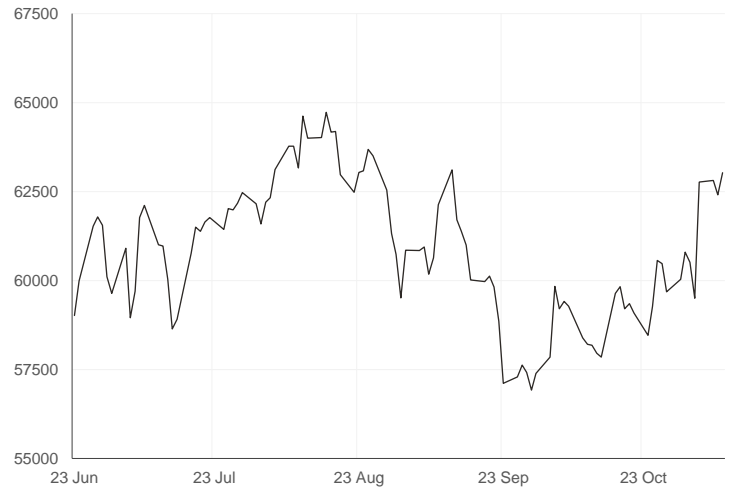
SOUTH AFRICAN MARKET COMMENTARY

SELECTED HEADLINES

On the Johannesburg Stock Exchange (JSE), the Top-40 index rose by 0.99% and the broader All-Share index was up by 0.91% at the end of the session yesterday while the Resource 10 index also saw significant gains, adding 2.74%. Looking at sectors, Precious Metals and Mining was up 6.35% yesterday, led by strong gains from Goldfields (+21.06%), AngloGold (+10.31%), Royal Bafokeng Platinum (+10.21%) And Harmony (+8.52). Northam Platinum bucked the trend and fell 6.06% by the close of the session.

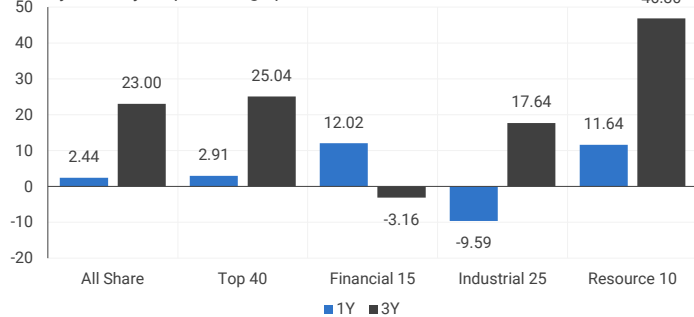
JSE TOP 40 INDEX

last 100 days



LOCAL INDICES

1-year & 3-year percentage performances



LOCAL INDICES

Normalised % performances comparison



EXPECTED COMPANY REPORTING SCHEDULE

COMPANY	CODE	RELEASE	DATE
Sappi	SAP	Final	10 Nov
Purple Group	PPE	Final	10 Nov
MultiChoice Group	MCG	Interim	10 Nov
Novus Holdings	NVS	Interim	10 Nov
Richemont	CFR	Interim	11 Nov

BANK AND OTHER SELECTED PREFERENCE SHARES

COMPANY	CODE	CODE	CLEAN YIELD	APPROX. NEXT LDT
Investec Limited	INPR	9267	8.69	07 Dec 2022
Standard Bank	SBPP	9480	8.13	29 Mar 2023
Absa	ABSP	93000	7.43	19 Apr 2023
Capitec	CPIP	10003	9.12	15 Mar 2023
Steinhoff	SHFF	7306	11.06	19 Oct 2022
Grindrod	GNDP	9254	9.39	22 Mar 2023
Netcare	NTCP	8670	10.22	02 Nov 2022
Discovery	DSBP	9650	10.22	08 Mar 2023
Invicta	IVTP	9880	11.01	23 Nov 2022

Sources : JSE, Moneyweb, CNBC, BBC, CNN

Please see the bottom of the last page for the full disclaimer

SENS ANNOUNCEMENTS

SELECTED RELEASES

NOVUS HOLDINGS LIMITED – Trading Statement and Trading Update

Global pulp and paper shortages with excessive price increases and logistical challenges were expected to have a material impact this year. Whilst the Group made a strategic decision to increase its stockholding to mitigate some of the price risk and expected supply constraints, this unfortunately was an insufficient buffer against the current exorbitant cost increases and restrictions on supply. The strategy could not be fully executed due to supply shortages. Gross margin has been squeezed because of the increased paper prices along with energy surcharges levied by European suppliers and higher logistical costs experienced throughout the period, with no sign of this abating soon. The Group's ongoing rationalisation has led to further once off costs included in the current period together with the once off transaction costs for the Group's acquisition of 75% of the equity stake of Pearson South Africa Proprietary Limited. Loadshedding costs incurred for the period were also substantially higher than the comparative period due to the increased frequency of power cuts. A review by management of the financial results for the six months ended 30 September 2022 has indicated that the Group's basic earnings per share is expected to be between 1.75 cents per share and 3.45 cents per share, reflecting a decrease of between 59.5% and 79.5% compared to the previous corresponding period's earnings per share of 8.52 cents per share. Headline earnings per share is expected to be between 0.75 cents per share and 5.03 cents per share, reflecting a decrease of between 82.4% and 97.4% compared to the previous corresponding period's headline earnings per share of 28.49 cents per share.

Move | -16.36% Open | 385c Close | 322c High | 385c Low | 322c

UNIVERSAL PARTNERS LIMITED – Summarised unaudited financial statements for the quarter ended 30 September 2022

Interest income of GBP 175,711 mainly comprised of interest earned from the loan to Xcede. During the quarter, UPL earned raising fees of GBP 57,500 for providing additional shareholder loans to Xcede. Dividend income of GBP 165,973 relates to an accrual raised on the preferred shares subscribed for by Universal Partners in Xcede. Accordingly, an amount equal to the dividend accrual of GBP 165,973 has been provided for during the quarter. During the quarter, the translation effect of exchange rate movements between the USD and the GBP resulted in a foreign exchange gain of GBP 1,386,022. Management fees paid during the quarter amounted to GBP 558,758 incurred in terms of the investment management agreement between the Company and Argo. General and administrative expenses amounting to GBP 181,889 were incurred. During the quarter under review, there was a partial reversal of the accrual previously recognised, which had a positive impact on the income statement of GBP 358,060. The Company drew down an additional GBP 4.7 million from the Rand Merchant Bank (Mauritius) facility during the quarter to advance the Xcede loan. Interest accrued on the facility was GBP 162,057 for the quarter.

Move | 0.00% Open | 2099c Close | 2099c High | 2099c Low | 2099c

LOCAL EQUITIES | JSE MID CAP COMPANIES (CENTS PER SHARE)

COMPANY	CODE	CLOSE	PREVIOUS	1D%	1M%	YTD%
Aspen	APN	15195	14775	2.84	7.67	-32.30
African Rainbow	ARI	27538	27040	1.84	3.83	19.10
Avi	AVI	7430	7371	0.80	-0.93	0.54
Barworld	BAW	10803	10528	2.61	15.75	-28.16
Bidvest Group	BVT	21641	21426	1.00	7.27	14.23
Capco	CCO	2205	2250	-2.00	5.15	-39.14
Clicks Group	CLS	30513	30452	0.20	8.56	-3.30
Coronation	CML	3465	3467	-0.06	12.79	-34.05
Dis-Chem	DCP	3125	3118	0.22	-1.82	-11.77
Distell Group	DGH	17405	17340	0.37	1.45	3.11
Drdgold	DRD	1093	1001	9.19	9.08	-17.20
Exxaro Resources	EXX	21900	21712	0.87	6.25	43.26
Fortress Reit A	FFA	1045	1045	0.00	12.24	-16.40
Fortress Reit B	FFB	438	425	3.06	4.29	34.77
Growthpoint	GRT	1330	1317	0.99	10.37	-13.47
Harmony Gold	HAR	5744	5293	8.52	8.73	-13.75
Investec	INL	9331	9377	-0.49	19.80	6.58
Investec	INP	9447	9478	-0.33	19.19	8.97
Italtile	ITE	1406	1386	1.44	-8.10	-16.31
Life Healthcare	LHC	1943	1938	0.26	11.92	-19.14
Multichoice Group	MCG	12013	11973	0.33	3.11	-1.56
Mediclinic Int.	MEI	10060	10155	-0.94	1.21	47.81
Montauk Renewables	MKR	23200	24650	-5.88	-12.45	34.88
Mr Price Group	MRP	18312	18262	0.27	2.84	-8.21
Momentum	MTM	1679	1685	-0.36	11.41	-11.40
Ninety One Plc	N91	4316	4330	-0.32	16.08	-24.91
Nedbank	NED	22183	22090	0.42	11.85	26.75
Northam Platinum	NHM	17800	18948	-6.06	3.73	-15.04
Nepi Rockcastle Plc	NRP	9536	9497	0.41	15.94	-10.04
Netcare	NTC	1555	1557	-0.13	8.36	-2.08
Ninety One	NY1	4380	4381	-0.02	18.19	-22.49
Old Mutual	OMU	1068	1060	0.75	10.10	-18.47
Pik N Pay	PIK	5953	5944	0.15	-3.01	13.46
Pepkor	PPH	2349	2308	1.78	12.28	7.31
Psg	PSG	25	25	-1.59	-3.14	-99.72
Quilter Plc	QLT	1994	2021	-1.34	9.26	-37.06
Rbplapts	RBP	16700	15153	10.21	12.31	6.83
Redefine	RDF	422	419	0.72	13.14	-4.09
Remgro	REM	14076	14085	-0.06	4.24	7.33
Resilient Reit	RES	5206	5160	0.89	5.73	-12.87
Rand Merchant Inv	RMI	2818	2816	0.07	-1.91	34.89
Reinet Investments Sca	RNI	29565	29748	-0.62	2.39	3.36
Sappi	SAP	5389	5578	-3.39	17.15	18.02
Santam	SNT	25437	25556	-0.47	3.57	-5.44
Spar	SPP	16100	15989	0.69	12.20	-3.66
Sirius Real Estate	SRE	1455	1435	1.39	4.15	-52.03
Tigebrands	TBS	18955	18704	1.34	11.64	4.72
The Foschini Group	TFG	11519	11595	-0.66	-4.31	-7.03
Thungela Resources	TGA	25600	26982	-5.12	-13.83	202.82
Telkom	TKG	3546	3597	-1.42	-26.74	-34.43
Truworths	TRU	5564	5498	1.20	8.31	6.49
Textainer	TXT	53500	53500	0.00	5.83	-6.96
Woolies	WHL	6510	6500	0.15	4.66	25.53

LOCAL EQUITIES | JSE SMALL CAP COMPANIES (CENTS PER SHARE)

COMPANY	CODE	CLOSE	PREVIOUS	1D%	1M%	YTD%
Advtech	ADH	1859	1827	1.75	4.38	5.75
Altron	AEL	926	937	-1.17	7.67	1.20
Aeci	AFE	9500	9401	1.05	9.20	-15.18
Alexander Forbes	AFH	488	486	0.41	6.09	8.69
Afrimat	AFT	4900	4895	0.10	3.35	-14.68
African Rainbow Cap.	AIL	530	530	0.00	-5.53	-22.06
Adcock Ingram	AIP	4800	4800	0.00	-2.50	-4.86
Astral	ARL	17687	17718	-0.17	-9.30	2.44
Attacq	ATT	713	690	3.33	11.41	-10.76
Brait	BAT	424	434	-2.30	6.53	-6.19
Blue Label Telecoms	BLU	526	535	-1.68	0.00	3.34
Bytes Technology	BYI	8186	8017	2.11	-0.47	-32.93
City Lodge Hotels	CLH	438	449	-2.45	10.33	-19.04
Curro	COH	878	861	1.97	-3.30	-29.48
Cashbuild	CSB	19200	19173	0.14	-9.31	-26.43
Datatec	DTC	4610	4600	0.22	3.92	19.74
Emira	EMI	1049	1000	4.90	3.86	10.42
Equites Property Fund	EQU	1628	1604	1.50	-0.73	-29.19
Fairvest	FTB	334	329	1.52	8.09	-21.41
Famous Brands	FBR	5975	5961	0.23	11.06	-23.55
Grindrod	GND	1006	1012	-0.59	14.32	103.23
Hci	HCI	18498	18399	0.54	6.46	149.97
Hudaco	HDC	13800	13607	1.42	2.07	4.66
Hammerson Plc	HMN	460	463	-0.65	21.05	-36.02
Hyprop	HYP	3418	3380	1.12	-6.36	-8.24
Investec Prop Fund	IPF	1038	1020	1.76	4.43	-16.29
Jse	JSE	10640	10445	1.87	3.16	-5.00
Kap Industrial	KAP	460	474	-2.95	6.98	5.26
Karooooo	KRO	43001	43487	-1.12	7.50	-19.62
Psg Konsult	KST	1123	1118	0.45	3.98	-16.44
Liberty Two Degrees	L2D	460	465	-1.08	-1.71	-3.16
Libstar	LBR	590	579	1.90	-5.60	-11.28
Lighthouse Capital	LTE	640	635	0.79	12.28	-28.89
Massmart	MSM	6180	6173	0.11	1.64	1.85
Mas Real Estate Inc	MSP	2050	2023	1.33	13.70	-2.52
Metair	MTA	2801	2855	-1.89	2.64	1.85
Motus	MTH	11751	11839	-0.74	-0.26	6.74
M&R Hold	MUR	520	542	-4.06	-10.81	-63.56
Oceana	OCE	5703	5788	-1.47	1.84	2.68
Omnia	OMN	7099	7188	-1.24	2.69	10.90
Pan African Resource	PAN	370	358	3.35	7.25	-3.65
Raubex	RBX	3300	3262	1.16	-3.90	-17.09
Rhodes Food Pty	RFG	1035	1050	-1.43	-7.51	-15.72
Reunert	RLO	4775	4767	0.17	4.76	-9.91
Sa Corp Real Estate	SAC	219	216	1.39	1.39	-6.81
Steinhoff International N.V.	SNH	183	179	2.23	-4.19	-63.55
Super	SPG	2658	2683	-0.93	1.33	-21.85
Stor-Age Property Reit	SSS	1345	1342	0.22	0.00	-7.56
Stenprop	STP	2640	2615	0.96	-7.34	-38.60
Sun Int	SUI	3471	3559	-2.47	22.39	22.00
Transaction Capital	TCP	4202	4140	1.50	15.09	-6.68
Tsogo Sun Hotels	TGO	109	108	1.30	18.93	-68.95
Tsogo Sun Gaming	TSG	1195	1199	-0.33	1.96	2.58
Vukile	VKE	1368	1363	0.37	4.59	10.59
Wbhovco	WBO	9485	9495	-0.11	4.60	-16.27
Zeder Investments	ZED	168	182	-7.69	-12.50	-48.15

10-YEAR BOND YIELD | SELECTED ITEMS (*BASIS POINT CHANGE)

COMPANY	YIELD	1D%	1M%	YTD%
United States	4.07	-5	19	264
United Kingdom	3.44	-10	-78	263
Germany	2.16	-11	-2	247
Japan	0.24	---	---	19
South African 10Y	10.53	-2	-19	125

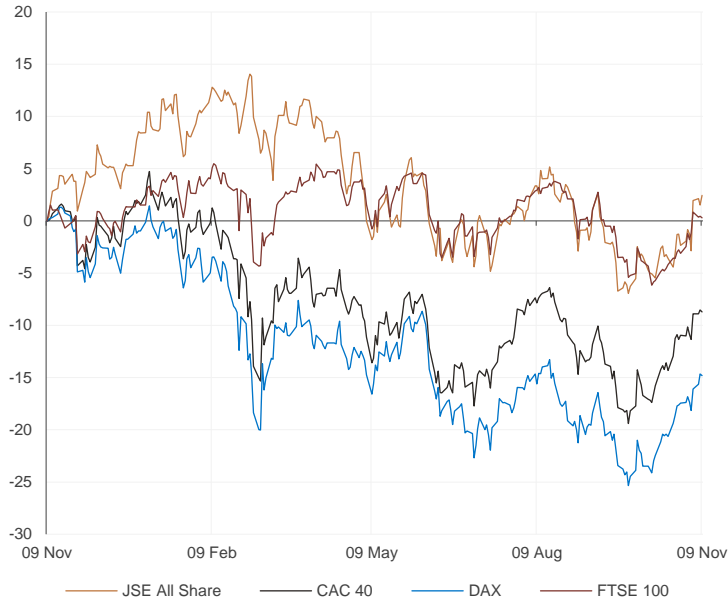
GLOBAL INTEREST RATES | SELECTED ITEMS

REGION	DATE CHANGED	CURRENT RATE
United States	02 Nov 2022	3.75%-4%
United Kingdom	03 Nov 2022	3.00%
European	27 Oct 2022	2.00%
SA Repo Rate	23 Sep 2022	6.25%
SA Prime Rate	23 Sep 2022	9.75%

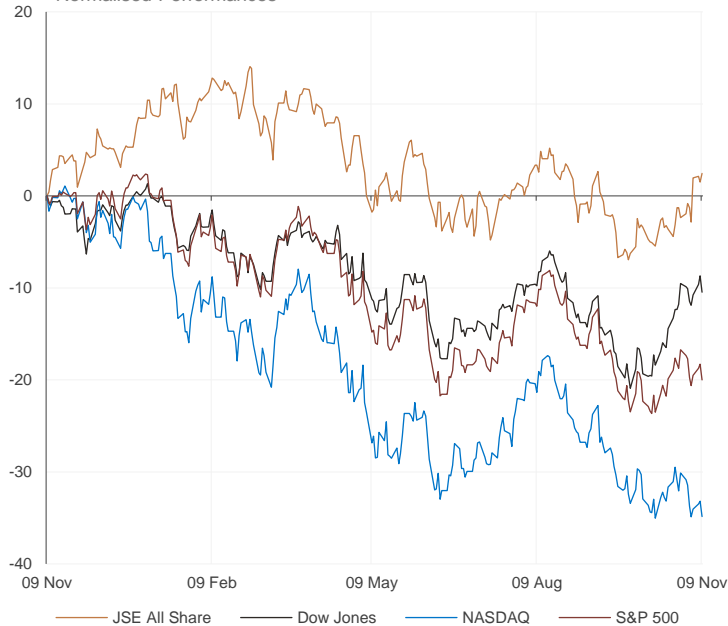
SOUTH AFRICAN 10-YEAR BOND 2021 v 2022


GLOBAL MARKETS

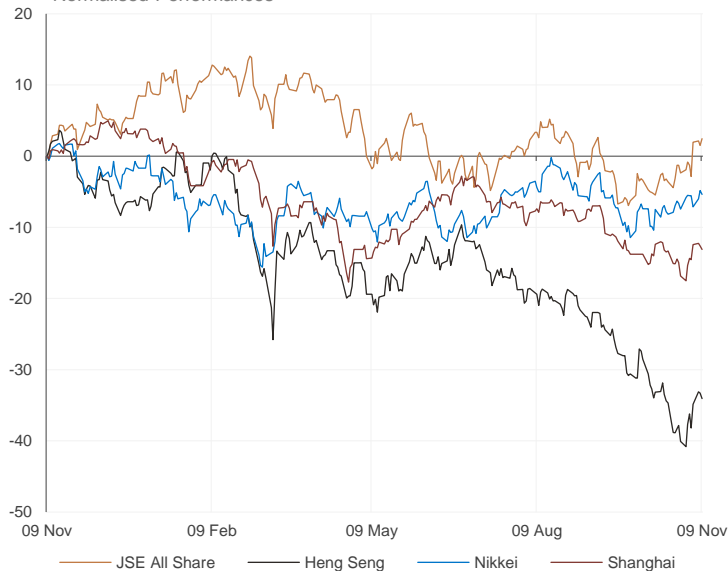
European Indices v JSE All Share Normalised Performances



US Indices v JSE All Share Normalised Performances



Asian Indices v JSE All Share Normalised Performances



EUROPEAN MARKET COMMENTARY

SELECTED HEADLINES

European markets closed lower yesterday as global investors await the results of the U.S. midterm elections. The pan-European Stoxx 600 was down 0.3% by the end of trading, with travel and leisure stocks shedding 2% as most sectors and all major bourses slid into the red. Utilities bucked the downward trend to add 0.7%, while health care stocks were up 0.6%. Earnings remain a key driver of share price movement in Europe. Adidas was among those reporting before the bell yesterday while shares of Commerzbank, Germany's second-biggest bank had dropped by 8.2% by mid-afternoon on the news that 2024 costs would be higher than expected.

EUROPEAN INDICES	CLOSE	PREVIOUS	1D%	5D%	1M%	YTD%
CAC 40	6430.57	6441.50	-0.17	2.45	9.61	-10.10
DAX 30	13666.32	13688.75	-0.16	3.09	11.35	-13.97
Eurostoxx 50	3728.03	3739.28	-0.30	2.93	10.45	-13.27
FTSE	7296.25	7306.14	-0.14	2.13	4.36	-1.20



AMERICAN MARKET COMMENTARY

SELECTED HEADLINES

US stocks were lower yesterday, following recent market gains, as results of the midterm elections provided no clear answers about who would control Congress yet. Investors were also weary ahead of the October consumer price index report due out today. The decline in stocks was led by Disney, which fell 13.2% after the entertainment giant missed analysts' estimates on the top and bottom lines while Tesla fell more than 6% after CEO Elon Musk revealed that he sold billions of dollars of the stock.

AMERICAN INDICES	CLOSE	PREVIOUS	1D%	5D%	1M%	YTD%
Dow Jones	32513.94	33160.83	-1.95	1.14	10.98	-10.52
Nasdaq	10353.17	10616.20	-2.48	-1.63	-2.81	-33.82
S&P 500	3748.57	3828.11	-2.08	-0.30	2.99	-21.35
Dollar Index	110.21	109.53	0.62	-1.61	-2.15	15.17
US VIX	26.09	25.54	2.15	0.89	-16.80	51.51



ASIAN MARKET COMMENTARY

SELECTED HEADLINES

Asia-Pacific stocks were mixed this morning as investors digested incoming results of the United States midterm elections and China's annualized producer prices, which fell for the first time since December 2020. Shares of technology companies listed in the city fell sharply this morning, with Tencent falling 4.48% and Meituan losing 4.5%. Hong Kong-listed shares of Alibaba also fell 2.61% and Xiaomi fell 2.07%. Electric vehicle makers also saw sharp losses, with BYD declining 6% and Xpeng dropped more than 7.2% while Nio fell 5.5%.

ASIAN INDICES	CLOSE	PREVIOUS	1D%	5D%	1M%	YTD%
Hang Seng	16358.52	16557.31	-1.20	3.36	-7.79	-30.08
Nikkei 225	27716.43	27872.11	-0.56	0.19	2.21	-3.73
Shanghai	3048.17	3064.49	-0.53	1.49	0.79	-16.25



COMMODITIES & CURRENCIES

BRENT CRUDE (\$) last 100 days



PLATINUM (\$) last 100 days



COMMODITY MARKET COMMENTARY

SELECTED HEADLINES

Gold prices were steady this morning as cautious investors held to the side-lines and awaited key U.S. inflation report to gauge the size of the Federal Reserve's future interest rate hikes. Meanwhile oil prices fell for a fourth day today on concerns that new COVID curbs in China, the world's biggest crude importer, will impact fuel demand. However, gasoline inventories fell by 900,000 barrels to their lowest since November 2014 and distillate stockpiles fell by 500,000 barrels.

COMMODITY	LAST	CLOSE	%CHG	1D%	5D%	YTD%
Brent Crude (\$)	92.41	95.10	-2.83	-3.41	-6.06	18.57
Gold (\$)	1706.75	1712.36	-0.33	4.38	0.68	-6.70
Palladium	1867.50	1922.29	-2.85	0.74	-14.86	-1.57
Platinum (\$)	990.92	1003.01	-1.21	5.75	8.03	2.26
Silver	21.05	21.36	-1.43	9.52	4.54	-9.70

GOLD (\$) last 100 days



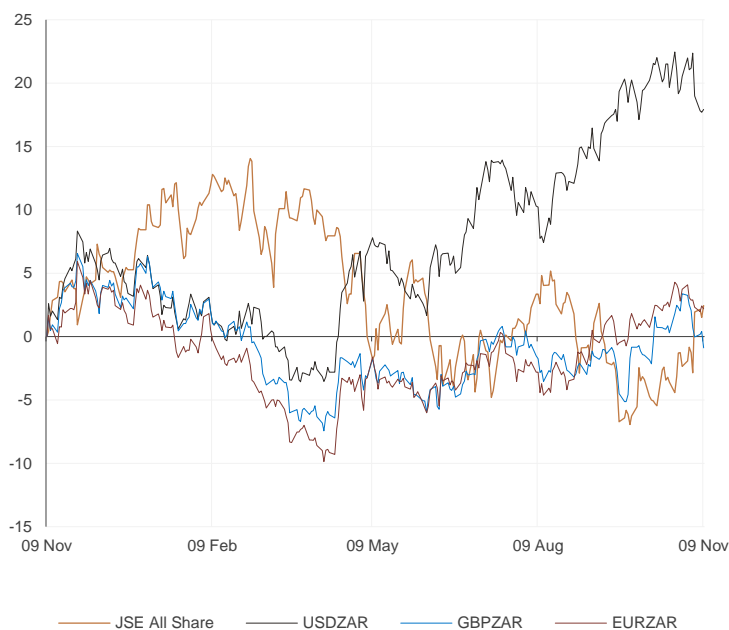
COMMODITY	LAST	CLOSE	%CHG	1D%	5D%	YTD%
USDZAR	17.74	17.71	0.19	-2.68	-1.35	11.30
GBPZAR	20.20	20.46	-1.29	-2.90	0.58	-6.31
EURZAR	17.81	17.85	-0.22	-0.67	0.85	-1.80
AUDZAR	11.44	11.53	-0.72	-1.33	-1.02	-1.27
EURUSD	1.00	1.01	-0.61	2.01	2.81	-11.95
USDJPY	146.41	145.69	0.49	-1.01	0.75	27.20
GBPUSD	1.14	1.15	-1.65	-0.31	2.44	-16.05

CURRENCY MARKET COMMENTARY

SELECTED HEADLINES

The rand weakened yesterday, as traders awaited results from the U.S. midterm elections. At the close of the session, the rand traded at R17.74 against the dollar, 0.19% weaker than its previous close. The dollar regained its footing this morning, ahead of key U.S. inflation data due later in the day, while cryptocurrencies were fragile after a bailout deal for exchange FTX by its bigger rival Binance collapsed.

Currencies v JSE All Share Normalised Performances



USDZAR last 100 days



EURUSD last 100 days



Sources : JSE, Moneyweb, CNBC, BBC, CNN

Disclaimer: This note is prepared for Sanlam Private Wealth (Pty) Ltd, by K2013143132 (Pty) Ltd trading as Thompson Green. Thompson Green is an independent company contracted to Sanlam Private Wealth (Pty) Ltd. The views expressed in this note are those of Thompson Green and/or its analysts and do not necessarily reflect the views of Sanlam Private Wealth (Pty) Ltd. Sanlam or any officer or agent thereof. K2013143132 (Pty) Ltd trading as Thompson Green is a research house and not a registered broker, financial advisor or financial service provider. Our editors and customer service teams also do not give personal investment advice. The information in this document is general advice only and may not be appropriate to your particular investment objectives, financial situation or particular needs, so before investing or in any doubt about your personal situation, you should seek professional advice from a stock broker or independent financial adviser authorised by the Financial Services Board. We research, recommend and articulate thoroughly, but disclaim all liability for any inaccuracies or omissions in this publication and any trading or investment losses you may incur. Should you outperform, we will take the credit. Thompson Green also acts as an introducer of business to Authorised Financial Services Providers. All accounts opened are held by the Authorised Registered Financial Services Provider and not Thompson Green. The information in this email is confidential and may be legally privileged. It is intended solely for the addressee. Access to this email by anyone else is unauthorised. If you are not the intended recipient, any disclosure, copying, distribution or any action taken or omitted to be taken in reliance on it, is prohibited and may be unlawful. If you are not the intended recipient please return the message to the sender and delete it from your records.