

GLOBAL OVERVIEW | SELECTED INDICES

SOUTH AFRICAN INDICES						
	CLOSE	PREVIOUS	1D%	5D%	1M%	YTD%
All Share	72775.49	72729.73	0.06	-1.94	-2.28	-5.36
Top 40	66337.43	66349.81	-0.02	-2.11	-2.35	-5.90
Financial 15	17406.31	17208.65	1.15	-0.53	1.12	-2.61
Industrial 25	101031.91	101508.47	-0.47	-3.34	-1.61	-2.59
Resource 10	50045.24	50282.96	-0.47	-1.78	-7.34	-13.01
Mid Cap	75663.48	75561.08	0.14	-1.38	-2.70	-5.91
Small Cap	72315.05	72021.21	0.41	0.03	-1.08	-0.25
Banks	10567.30	10413.21	1.48	-0.71	1.50	-3.48
Retailers	5996.83	5940.38	0.95	-3.02	-4.59	-3.80
Property (J253) - TR	1947.01	1955.39	-0.43	-0.59	0.94	4.47

AMERICAN INDICES						
	CLOSE	PREVIOUS	1D%	5D%	1M%	YTD%
Dow Jones	39087.38	38996.39	0.23	-0.11	1.47	3.71
Nasdaq	16274.94	16091.92	1.14	1.74	5.95	8.42
S&P 500	5137.08	5096.27	0.80	0.95	4.71	7.70
US VIX	13.11	13.40	-2.16	-4.65	-5.55	5.30

EUROPEAN INDICES						
	CLOSE	PREVIOUS	1D%	5D%	1M%	YTD%
CAC 40	7934.17	7927.43	0.09	-0.41	4.55	5.18
DAX 30	17735.07	17678.19	0.32	1.81	5.20	5.87
Eurostoxx 50	4894.86	4877.77	0.35	0.46	5.52	8.25
FTSE	7682.50	7630.02	0.69	-0.31	0.79	-0.66

ASIAN INDICES						
	CLOSE	PREVIOUS	1D%	5D%	1M%	YTD%
Hang Seng	16589.44	16511.44	0.47	-0.82	6.57	-2.69
Nikkei 225	39910.82	39166.19	1.90	2.08	10.83	19.26
Shanghai	3027.02	3015.17	0.39	0.74	9.25	1.75

EARLY MORNING MARKETS						
	LAST	CLOSE	% CHG	1D%	5D%	YTD%
TENCENT	276.60	277.40	-0.29	0.07	-4.61	-5.52
BHP AUS	4424.00	4492.00	-1.51	2.25	0.83	-10.89

NOTE : 5D% and 1M% are rolling percentage moves

INTERNATIONAL ECONOMIC CALENDAR | SELECTED EVENTS

TIME	AREA	TODAY'S EVENTS & RELEASES	PERIOD	EXP.	PREV.
1:50	JP	Capital Spending y/y	Q4	1.90%	3.40%
2:30	AU	Company Gross Profits q/q	Q4	1.60%	-1.30%
12:45	EU	5-Year Bond Auction	---	---	2.63%
18:30	US	3-Month Bill Auction	---	---	5.26%
---	---	---	---	---	---

TIME	AREA	PREVIOUS SESSION'S RELEASES	PERIOD	EXP.	ACT.
9:00	HK	Retail Sales y/y	Jan	3.20%	-1.20%
10:55	DE	HCOB Manufacturing PMI Final	Feb	42.50	45.50
11:00	EA	HCOB Manufacturing PMI Final	Feb	46.10	46.50
11:00	ZA	ABSA manufacturing PMI	Feb	51.70	43.60
14:15	ZA	Total New Vehicle Sales	Feb	44.7K	41.6K

JSE ALL SHARE | BEST AND WORST ONE-DAY PERFORMERS

BEST ONE-DAY % PERFORMERS						
	CODE	CLOSE	1D%	5D%	YTD%	
KAP Limited	KAP	257	11.74	11.74	-1.91	
Truworths Int Ltd	TRU	7757	7.93	-0.73	4.33	
Super Group Ltd	SPG	2757	4.39	2.30	-7.33	
Hudaco Industries Ltd	HDC	16699	4.37	-4.55	3.96	
Shaftesbury Capital plc	SHC	3112	3.73	-1.33	-4.25	
Cashbuild Ltd	CSB	14000	3.70	-0.36	-16.13	

WORST ONE-DAY % PERFORMERS						
	CODE	CLOSE	1D%	5D%	YTD%	
Metair Investments Ltd	MTA	1160	-6.83	-14.14	-34.65	
Northam Platinum Hldgs Ltd	NPH	10455	-4.68	-4.73	-25.55	
Alexander Forbes Grp Hldgs	AFH	639	-3.18	-0.16	-3.18	
Telkom SA SOC Ltd	TKG	2802	-3.04	-1.82	-5.78	
Karooooo Ltd	KRO	50500	-2.70	3.36	6.32	

DIVIDEND DATA

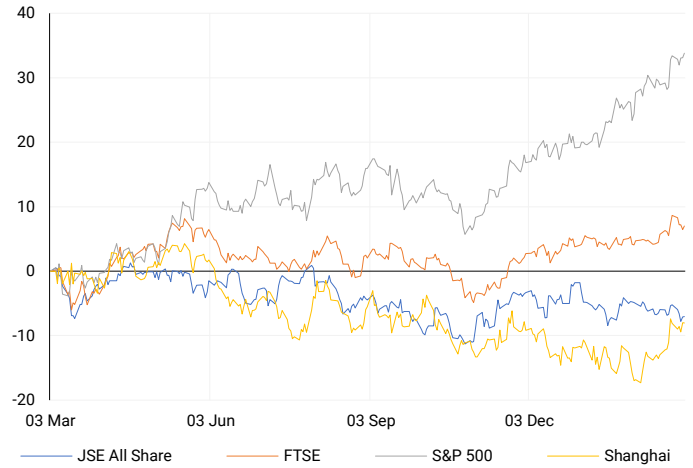
COMPANY	CODE	EXPECTED DIVIDEND	COMPANY	CODE	EXPECTED DIVIDEND
The Foschini Group	TFGP	6.5 ZARc	South32	S32	0.4 USDc
DRDGOLD	DRD	20 ZARc	---	---	---
Italtile	ITE	27 ZARc	---	---	---
Sappi	SAPCB	1015103 ZARc	---	---	---
BHP	BHG	72 USDc	---	---	---

SOURCES | JSE, IRESS, MONEYWEB, CNBC, BBC, CNN

PLEASE SEE THE BOTTOM OF THE LAST PAGE FOR THE FULL DISCLAIMER

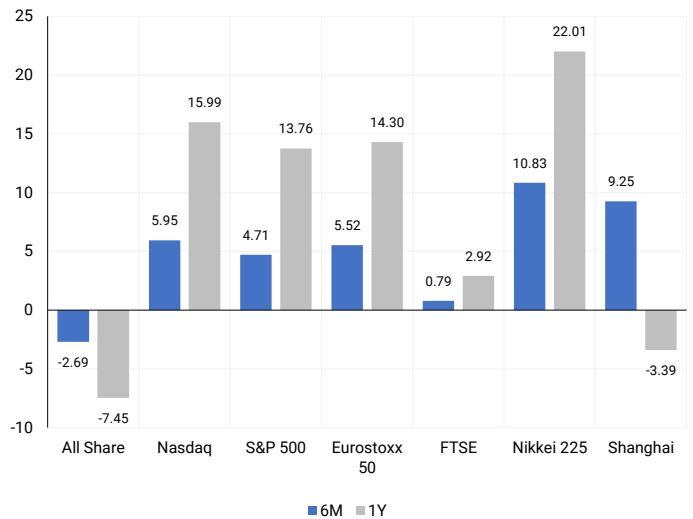
INTERNATIONAL INDICES

Normalised percentage performances - In rand terms



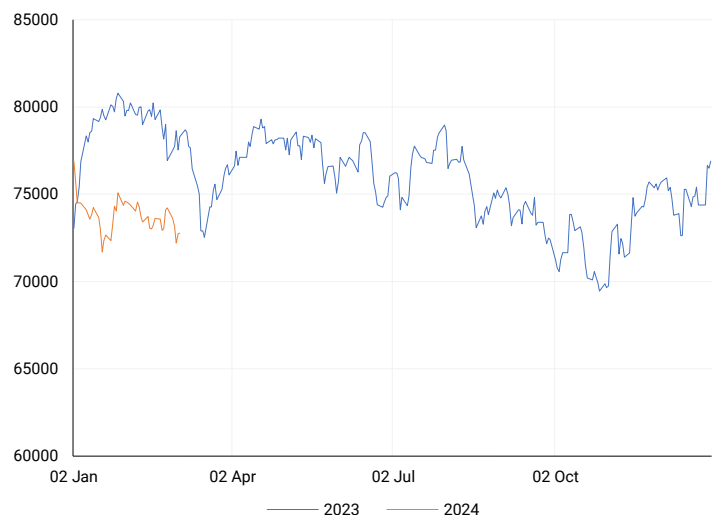
INTERNATIONAL INDICES

6-month & 1-year percentage performances



JSE ALL SHARE INDEX

2023 v 2024 to date



Last date to trade Tue, 05 March

LOCAL EQUITIES | JSE LARGE CAP COMPANIES (Cents Per Share)

COMPANY	CLOSE	PREVIOUS	1D%	5D%	1M%	YTD%
Absa Group Limited	16559	16356	1.24	-0.52	1.95	1.15
Anglo American plc	41688	42019	-0.79	-5.68	-5.92	-11.96
Anglo American Plat Ltd	73140	73691	-0.75	-0.95	-10.03	-24.13
Anglogold Ashanti Ltd	36027	36101	-0.20	3.87	5.06	1.94
Anheuser-Busch InBev SA NV	115254	117534	-1.94	-5.87	-0.30	-3.97
BHP Group Limited	55436	55442	-0.01	-2.74	-3.21	-12.48
BID Corporation Ltd	44460	44870	-0.91	-3.35	-6.23	4.21
British American Tob plc	56600	57439	-1.46	-2.90	2.43	4.52
Compagnie Fin Richemont	305700	306750	-0.34	0.86	9.69	19.06
Capitec Bank Hldgs Ltd	205050	201777	1.62	-0.31	2.56	1.19
Discovery Ltd	13500	13590	-0.66	-1.29	-2.79	-6.04
Firststrand Ltd	6554	6478	1.17	-0.55	-1.09	-10.84
Gold Fields Ltd	25185	25180	0.02	3.64	-12.19	-9.33
Glencore plc	9146	9156	-0.11	-0.82	-9.17	-18.08
Impala Platinum Hlgs Ltd	6451	6478	-0.42	-1.96	-8.01	-29.32
Kumba Iron Ore Ltd	53454	53695	-0.45	-3.06	-5.97	-13.05
Mondi plc	33930	34154	-0.66	-2.69	2.69	-6.53
MTN Group Ltd	8406	8350	0.67	-1.50	-12.25	-27.22
Naspers Ltd -N-	312128	315514	-1.07	-6.76	-1.76	-0.21
Prosus N.V.	55751	56350	-1.06	-6.09	-1.29	-0.51
South32 Limited	3742	3653	2.44	1.66	-7.12	-11.31
Standard Bank Group Ltd	20760	20182	2.86	0.66	4.70	-0.24
Shoprite Holdings Ltd	25915	25822	0.36	-1.19	-4.97	-5.78
Sanlam Limited	7433	7355	1.06	0.99	3.05	2.10
Sasol Limited	14638	14473	1.14	0.26	-10.13	-21.00
Sibanye Stillwater Ltd	1966	1987	-1.06	-1.95	-13.92	-21.04
Vodacom Group Ltd	9422	9402	0.21	2.49	-1.13	-11.11

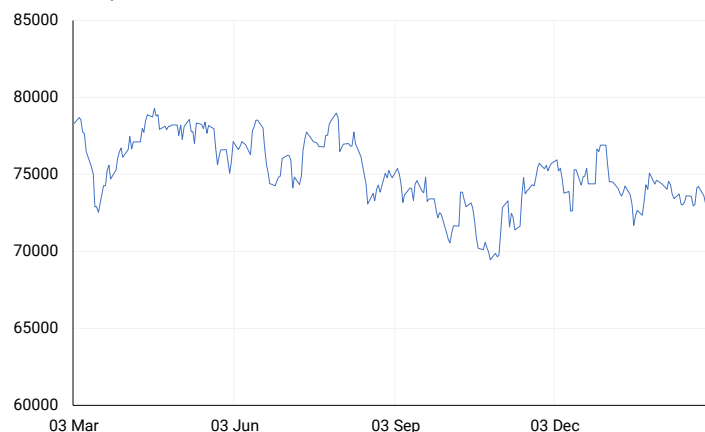
SOUTH AFRICAN MARKET SUMMARY

SELECTED ITEMS

On the stock market, the Top-40 index closed down 0.02%, while the broader all-share index was 0.06% higher. MTN Group, Africa's largest telecoms operator, warned of a potential 80% decrease in full-year profit due to the sharp devaluation of the Nigerian naira, leading its major unit, MTN Nigeria, to incur losses. MTN stated that its headline earnings per share could drop between 60% and 80% compared to the previous year. Meanwhile, Northam Platinum announced the suspension of some capital projects due to the current decline in metal prices, resulting in a 93% decrease in half-year profit.

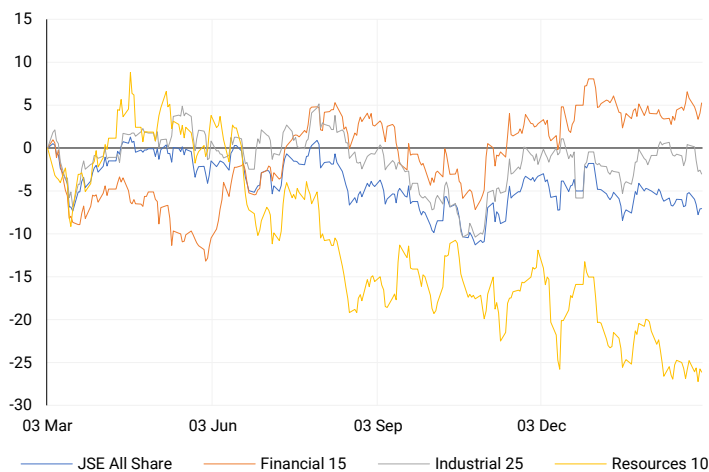
JSE TOP 40

One-year



LOCAL INDICES

Normalised percentage performances



LOCAL SENS ANNOUNCEMENTS

SELECTED RELEASE

NORTHAM PLATINUM HOLDINGS LIMITED – Condensed Reviewed Interim Financial Results

In the six months ending December 31, 2023, compared to the same period in 2022, there was a significant decline in financial performance across various metrics: Sales revenue dropped by 25.5% to R 14,994,577, operating profit decreased by 73.3% to R 2,417,200, and operating profit margin fell from 45.1% to 16.1%. Earnings per share (EPS) and headline earnings per share (HEPS) experienced a substantial decrease of 91.4% and 92.5% respectively, with EPS at 136.5 cents and HEPS at 121.4 cents. Dividends per share dropped from 100.0 cents to zero. EBITDA (Earnings Before Interest, Taxes, Depreciation, and Amortization) also saw a decline of 68.1% to R 3,170,829, with the EBITDA margin decreasing from 49.5% to 21.1%.

NPH | -4.68% OPEN | 10500c HIGH | 10878c LOW | 10061c CLOSE | 10455c TIME | 07:05

MTN GROUP LIMITED – Trading Statement

The decrease in earnings per share (EPS) for the financial year ended December 31, 2023, compared to the previous year, FY 22, falls within a range of 107 cents to 321 cents, indicating a decline between -90% and -70%. This drop is influenced by impairment losses on investments, goodwill, and assets held for sale, as well as gains and losses on disposals. Similarly, the decrease in headline earnings per share (HEPS) for FY 23 ranges from 231 cents to 462 cents, reflecting a decrease between -80% and -60% compared to FY 22. This decline in HEPS is attributed to various non-operational factors such as hyperinflation adjustments, foreign exchange losses, divestments, and other items impacting the overall financial performance.

MTN | 0.67% OPEN | 8000c HIGH | 8439c LOW | 7753c CLOSE | 8406c TIME | 07:05

EXPECTED COMPANY REPORTING SCHEDULE

COMPANY	CODE	RELEASE	DATE
Sasfin	SFN	Interim	04 Mar'24
Shoprite	SHP	Interim	05 Mar'24
Nedbank	NED	Final	05 Mar'24
Grindrod	GND	Final	07 Mar'24
Sanlam	SLM	Final	07 Mar'24

LONDON FINANCE & INVESTMENT GROUP PLC – Unaudited Condensed Interim Financial Statements

In December 2023 compared to December 2022, there was a 4.86% increase in revenue, reaching GBP £510,000. However, profit before income tax saw a significant decrease of 56.44%, dropping to GBP £572,000 from GBP £1,313,000. Similarly, headline earnings for the period decreased by 53.47% to GBP £456,000 from GBP £980,000. Both headline earnings per ordinary share and earnings per ordinary share experienced a decline of 51.61%, reaching 1.5 pence from 3.1 pence. On a positive note, dividends per ordinary share increased by 9.09% to 0.60 pence from 0.55 pence.

LNF | 0.00% OPEN | 1170c HIGH | 1170c LOW | 1170c CLOSE | 1170c TIME | 09:00

BANK AND OTHER SELECTE PREFERENCE SHARES

COMPANY	CODE	CLOSE	CLEAN YIELD	NEXT LDT (Est.)
Investec Limited	INPR	9045	10.69	Thu, 06 Jun '24
Standard Bank	SBPP	8660	11.08	Thu, 28 Mar '24
Absa	ABSP	76101	11.18	Thu, 18 Apr '24
Capitec	CPIP	9516	10.15	Thu, 14 Mar '24
Steinhoff	SHFF	8451	12.21	Thu, 18 Apr '24
Grindrod	GNDP	9006	11.97	Thu, 21 Mar '24
Netcare	NTCP	8600	12.00	Thu, 09 May '24
Discovery	DSBP	10299	12.43	Thu, 07 Mar '24
Invicta	IVTP	9805	12.36	Thu, 27 Jun '24

LOCAL EQUITIES | JSE MID CAP COMPANIES (Cents Per Share)

COMPANY	CODE	CLOSE	PREVIOUS	1D%	1M%	YTD%
Aspen Pharmacare Hldgs Ltd	APN	19672	19599	0.37	1.40	-3.33
African Rainbow Min Ltd	ARI	17029	16884	0.86	-7.97	-14.86
AVI Ltd	AVI	8934	8942	-0.09	7.47	8.86
Barloworld Ltd	BAW	6774	6725	0.73	-9.16	-14.25
Bidvest Ltd	BVT	23472	23366	0.45	-3.46	-6.96
Bytes Technology Grp PLC	BYI	14059	13674	2.82	-3.71	-1.83
Capital&Counties Prop plc	CCO	3112	3000	3.73	0.13	-4.25
Clicks Group Ltd	CLS	29844	30009	-0.55	-0.40	-8.37
Dis-Chem Pharmacies Ltd	DCP	3066	3054	0.39	2.20	-0.10
Distell Group Hldgs Ltd	DGH	94.5	94.5	0.00	5.00	9.88
Exaro Resources Ltd	EXX	18093	17772	1.81	-3.64	-11.52
Fortress Real Est INV A	FFA	18.78	18.72	0.32	2.07	-98.64
Fortress Real Est INV B	FFB	1660	1662	-0.12	121.63	133.80
Growthpoint Prop Ltd	GRT	1172	1171	0.09	-1.10	0.34
Harmony GM Co Ltd	HAR	11211	11253	-0.37	-7.35	-6.25
Hammerson plc	HMN	615	624	-1.44	-2.23	-9.56
Investec Ltd	INL	12007	12062	-0.46	-1.25	-4.40
Investec plc	INP	11981	11970	0.09	-1.31	-4.87
Italtile Ltd	ITE	1079	1089	-0.92	-6.42	-3.66
Life Healthc Grp Hldgs Ltd	LHC	1760	1755	0.28	-2.11	-4.19
MultiChoice Group Ltd	MCG	10460	10441	0.18	10.16	29.10
Mediclinic Int plc	MEI	18.5	18	2.78	5.71	-28.85
Montauk Renewables Inc	MKR	11493	11240	2.25	-9.69	-33.18
Mr Price Group Ltd	MRP	17000	17060	-0.35	-0.42	8.41
Momentum Met Hldgs Ltd	MTM	2091	2084	0.34	-0.48	-4.48
Ninety One Plc	N91	3954	3966	-0.30	-4.03	-8.30
Nedbank Group Ltd	NED	22020	21919	0.46	2.22	1.84
Northam Platinum Hldgs Ltd	NPH	10455	10968	-4.68	-18.04	-25.55
NEPI Rockcastle N.V.	NRP	13462	13685	-1.63	7.34	6.52
Netcare Limited	NTC	1372	1356	1.18	-2.35	-3.65
Ninety One Limited	NY1	3920	3922	-0.05	-4.41	-8.77
Old Mutual Limited	OMU	1220	1194	2.18	-2.63	-6.58
OUTsurance Group Ltd	OUT	4174	4164	0.24	-0.86	-1.09
Pick n Pay Stores Ltd	PIK	1990	2024	-1.68	-14.30	-14.48
Pepkor Holdings Ltd	PPH	1873	1867	0.32	-3.15	-4.58
Quilter Plc	QLT	2350	2329	0.90	-3.69	-3.21
Redefine Properties Ltd	RDF	399	400	-0.25	-4.09	3.64
Remgro Ltd	REM	14900	14546	2.43	-5.11	-8.30
Resilient REIT Limited	RES	4734	4714	0.42	1.98	6.89
Reinet Investments S.C.A	RNI	48585	48404	0.37	4.59	4.21
Sappi Ltd	SAP	4523	4617	-2.04	0.51	2.33
Santam Limited	SNT	30433	30270	0.54	4.76	6.20
The Spar Group Ltd	SPP	9650	9765	-1.18	-16.77	-18.15
Sirius Real Estate Ltd	SRE	2128	2120	0.38	-1.66	-3.93
Tiger Brands Ltd	TBS	19897	19950	-0.27	-3.42	-1.15
Transaction Capital Ltd	TCP	973	967	0.62	19.39	21.93
The Foschini Group Limited	TFG	10616	10460	1.49	-5.64	-4.33
Thungela Resources Ltd	TGA	10710	10500	2.00	-10.21	-30.36
Telkom SA SOC Ltd	TKG	2802	2890	-3.04	-0.78	-5.78
Truworths Int Ltd	TRU	7757	7187	7.93	2.47	4.33
Textainer Group Hldgs Ltd	TXT	94500	95200	-0.74	1.86	2.61
Woolworths Holdings Ltd	WHL	6329	6417	-1.37	-9.08	-12.34
Zeda Limited	ZZD	1180	1150	2.61	-8.53	-7.45

LOCAL EQUITIES | JSE SMALL CAP COMPANIES (Cents Per Share)

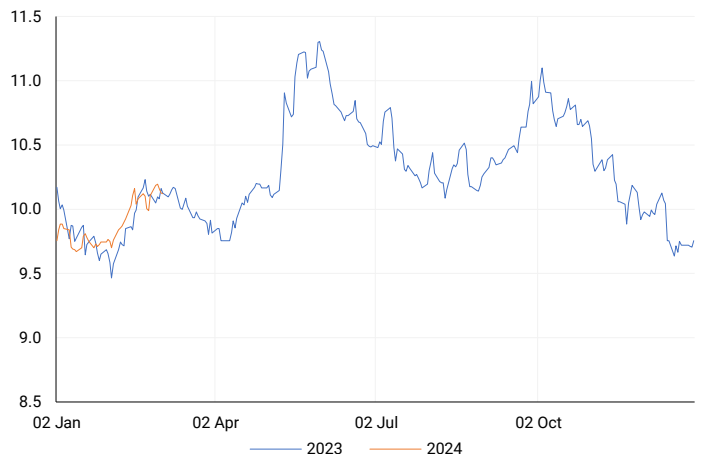
COMPANY	CODE	CLOSE	PREVIOUS	1D%	1M%	YTD%
ArcelorMittal SA Limited	ACL	135	131	3.05	10.66	-17.68
ADVTECH Ltd	ADH	2757	2749	0.29	4.04	12.35
Altron Limited A	AEL	1050	1030	1.94	3.96	2.44
AECI Limited	AFE	9718	9695	0.24	-4.37	-11.40
Alexander Forbes Grp Hldgs	AFH	639	660	-3.18	1.75	-3.18
Afrimat Limited	AFT	6160	6264	-1.66	-4.95	-2.22
African Rainbow Cap Inv	AIL	497	499	-0.40	1.64	1.64
Adcock Ingram Hldgs Ltd	AIP	5565	5609	-0.78	1.00	-7.40
Astral Foods Ltd	ARL	14461	14668	-1.41	-4.72	-1.34
Attacq Limited	ATT	948	960	-1.25	-4.44	2.82
Brait PLC	BAT	172	173	-0.58	-4.44	-5.49
Blue Label Telecoms Ltd	BLU	369	360	2.50	3.07	-4.90
Coronation Fund Mngrs Ld	CML	3133	3121	0.38	0.58	0.55
Curro Holdings Limited	COH	1133	1132	0.09	-5.43	-2.75
Cashbuild Ltd	CSB	14000	13500	3.70	-14.59	-16.13
DRD Gold Ltd	DRD	1344	1305	2.99	-9.25	-14.77
Datatec Ltd	DTC	4040	4025	0.37	0.92	-0.25
Emira Property Fund Ltd	EMI	875	890	-1.69	0.46	2.34
Equites Prop Fund Ltd	EQU	1295	1309	-1.07	-7.63	-7.17
Famous Brands Ltd	FBR	5696	5666	0.53	0.02	-1.67
Fairvest Limited B	FTB	360	355	1.41	-2.17	4.65
Grindrod Ltd	GND	1270	1290	-1.55	4.96	10.82
Hosken Cons Inv Ltd	HCI	17628	17570	0.33	-0.01	-12.99
Hudaco Industries Ltd	HDC	16699	16000	4.37	5.03	3.96
Hyprop Inv Ltd	HYP	3127	3137	-0.32	-2.16	0.51
Investec Property Fund Ltd	IPF	769	766	0.39	-9.10	-3.88
JSE Ltd	JSE	8941	8764	2.02	2.92	-3.28
KAP Industrial Hldgs Ltd	KAP	257	230	11.74	11.26	-1.91
Karooooo Ltd	KRO	50500	51900	-2.70	5.65	6.32
PSG Konsult Limited	KST	1512	1519	-0.46	-1.37	-1.50
Libstar Holdings Ltd	LBR	350	340	2.94	6.06	0.00
Lighthouse Properties plc	LTE	770	770	0.00	1.72	4.76
Industrials REIT Limited	MLI	0.5	0.45	11.11	-16.67	-28.57
MAS P.L.C	MSP	1681	1670	0.66	-9.14	-2.89
Metair Investments Ltd	MTA	1160	1245	-6.83	-18.94	-34.65
Motus Holdings Ltd	MTH	9439	9265	1.88	-8.98	-7.00
Murray & Roberts Hldgs	MUR	127	124	2.42	3.25	-14.77
Oceana Group Ltd	OCE	7188	7139	0.69	-0.35	1.71
Omnia Holdings Ltd	OMN	6220	6240	-0.32	-4.31	-4.85
Pan African Resource plc	PAN	482	476	1.26	11.57	17.85
PPC Limited	PPC	364	368	-1.09	-3.19	-8.77
Raubex Group Ltd	RBX	2800	2800	0.00	-6.04	1.01
RFG Holdings Limited	RFG	1370	1390	-1.44	3.40	1.48
Reunert Ltd	RLO	6538	6518	0.31	6.78	9.08
SA Corp Real Estate Ltd	SAC	251	246	2.03	-0.79	8.19
Super Group Ltd	SPG	2757	2641	4.39	-4.44	-7.33
Stor-Age Prop REIT Ltd	SSS	1413	1400	0.93	0.93	8.19
Southern Sun LTD	SSU	512	525	-2.48	-6.06	-2.48
Sun International Ltd	SUI	3920	3940	-0.51	-5.70	-4.39
Tharisa plc	THA	1270	1280	-0.78	-11.19	-15.95
Tsogo Sun Gaming Ltd	TSG	1150	1149	0.09	-1.37	-6.12
Vukile Property Fund Ltd	VKE	1480	1477	0.20	-1.86	4.82
Wilson Bayly Hlm-Ovc Ltd	WBO	13400	13005	3.04	2.68	3.03

10-YEAR BOND YIELD | SELECTED ITEMS (Basis Point Change)

REGION	YIELD	1D	1M	1Y
United States	4.19%	-6	17	--
United Kingdom	4.11%	-1	20	26
Germany	2.41%	0	17	-30
Japan	0.71%	1	5	--
South African 10Y	10.11%	2	33	7

SOUTH AFRICAN 10-YEAR

2023 vs 2024 to date

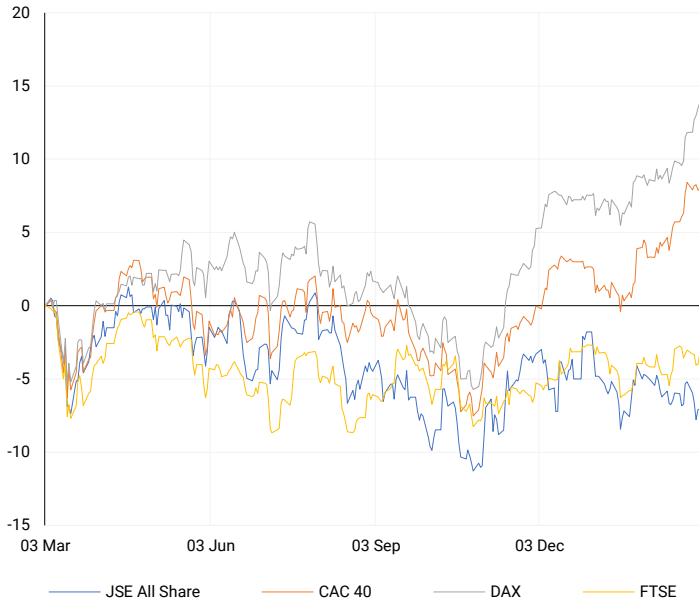


GLOBAL INTEREST RATES | SELECTED ITEMS

REGION	DATE CHANGED	CURRENT RATE
United States	Wed, 26 Jul '23	5.25%-5.50%
United Kingdom	Thu, 03 Aug '23	5.25%
European	Thu, 27 Jul '23	4.25%
SA Repo Rate	Thu, 25 May '23	8.25%
SA Prime Rate	Thu, 25 May '23	11.75%

EUROPEAN INDICES

Normalised percentage performances

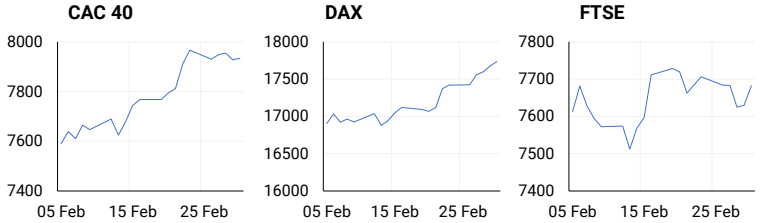


EUROPEAN MARKET SUMMARY

SELECTED ITEMS

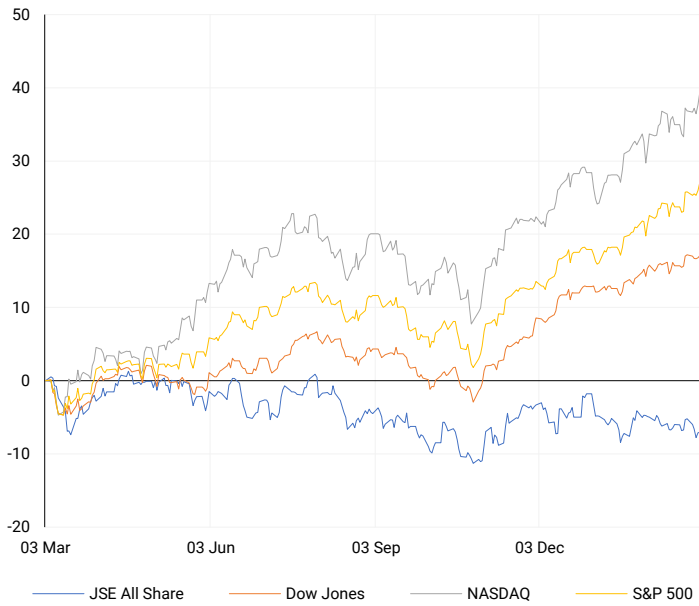
European markets closed higher on Friday, kicking off the new trading month positively following a successful February, as investors analysed recent inflation figures from the eurozone. The pan-European Stoxx 600 index concluded the session with a 0.6% increase. Tech stocks spearheaded the gains, rising by 1.6%, while the insurance sector saw a 0.7% decline. Earnings reports played a significant role in driving individual share prices, with companies like Grifols, Daimler Truck, and ITV all experiencing double-digit gains due to robust financial results.

EUROPEAN INDICES	CLOSE	PREVIOUS	1D%	5D%	1M%	YTD%
CAC 40	7934.17	7927.43	0.09	-0.41	4.55	5.18
DAX 30	17735.07	17678.19	0.32	1.81	5.20	5.87
Eurostoxx 50	4894.86	4877.77	0.35	0.46	5.52	8.25
FTSE	7682.50	7630.02	0.69	-0.31	0.79	-0.66



AMERICAN INDICES

Normalised percentage performances

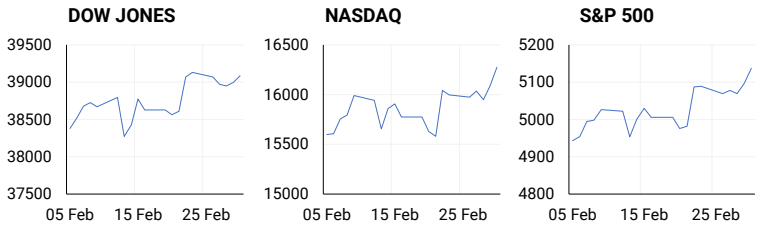


AMERICAN MARKET SUMMARY

SELECTED ITEMS

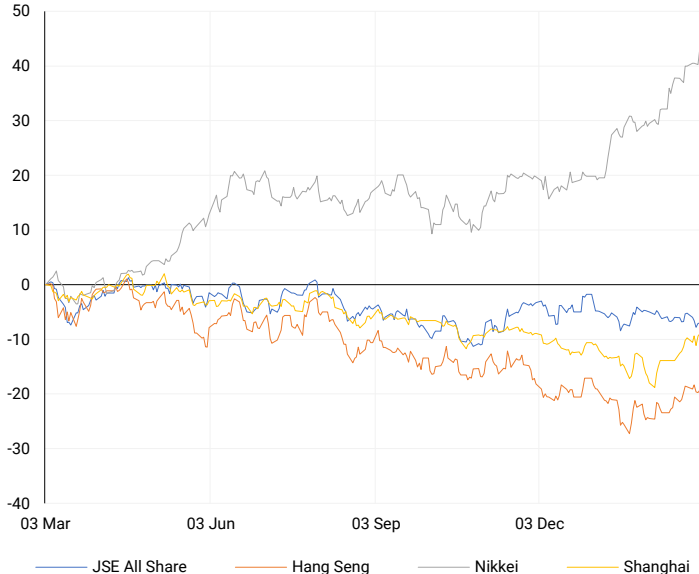
On Friday, the Nasdaq Composite reached an all-time high, surpassing its previous record from 2021. However, there are concerns in the U.S. as manufacturing activity in February declined more than anticipated, marked by decreases in new orders, production, and employment, according to the Institute for Supply Management. Additionally, the final reading on consumer sentiment for February fell slightly below expectations, with the University of Michigan's sentiment index at 76.9, below both the Dow Jones estimate of 79.6 and the January reading of 79, indicating some unease in the economic outlook.

AMERICAN INDICES	CLOSE	PREVIOUS	1D%	5D%	1M%	YTD%
Dow Jones	39087.38	38996.39	0.23	-0.11	1.47	3.71
Nasdaq	16274.94	16091.92	1.14	1.74	5.95	8.42
S&P 500	5137.08	5096.27	0.80	0.95	4.71	7.70
US VIX	13.11	13.40	-2.16	-4.65	-5.55	5.30



ASIAN INDICES

Normalised percentage performances

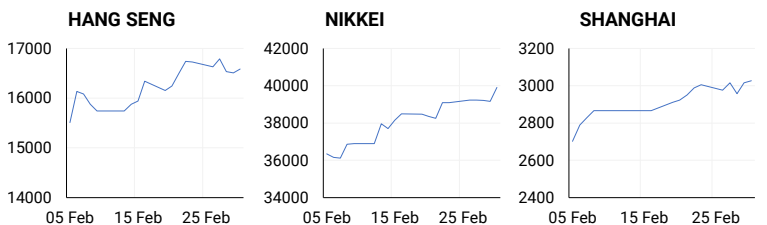


ASIAN MARKET SUMMARY

SELECTED ITEMS

Asian share markets strengthened this morning, with the Nikkei hitting another new high, as investors prepared for a week filled with central bank events and significant data releases that will shape market expectations regarding potential interest rate cuts. Japan's Nikkei rose by 0.8%, surpassing the 40,000 mark for the first time, marking its fifth consecutive week of gains. Tokyo Electron, a tech favourite, has surged by 55% since the beginning of the year.

ASIAN INDICES	CLOSE	PREVIOUS	1D%	5D%	1M%	YTD%
Hang Seng	16589.44	16511.44	0.47	-0.82	6.57	-2.69
Nikkei 225	39910.82	39166.19	1.90	2.08	10.83	19.26
Shanghai	3027.02	3015.17	0.39	0.74	9.25	1.75



COMMODITIES MARKET SUMMARY

SELECTED ITEMS

Gold prices remained close to a two-month peak this morning following weaker-than-expected U.S. economic data last week, which boosted expectations for a Federal Reserve interest rate cut in June and subsequently lowered the dollar and treasury yields. Meanwhile, oil prices increased as OPEC+ members agreed to prolong voluntary oil production cuts of 2.2 million barrels per day into the second quarter, aligning with market forecasts.

COMMODITY	LAST	CLOSE	% CHG	1D%	5D%	YTD%
Brent Crude	83.53	83.39	0.17	-0.28	2.04	8.19
Gold	2081.89	2083.06	-0.06	1.91	2.34	0.97
Palladium	955.11	952.26	0.30	1.04	-2.29	-13.22
Platinum	880.53	886.90	-0.72	1.01	-1.53	-10.16
Silver	23.06	23.15	-0.40	2.10	0.86	-2.69

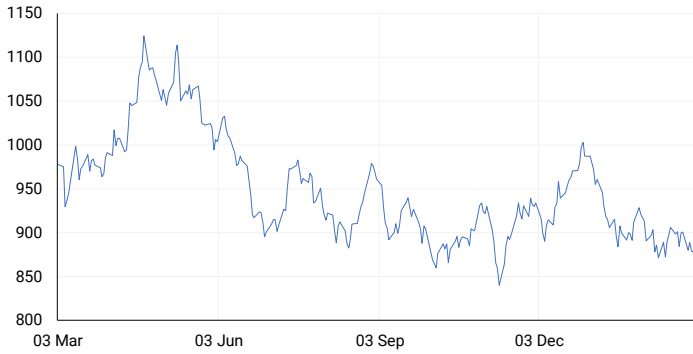
BRENT CRUDE

One-year



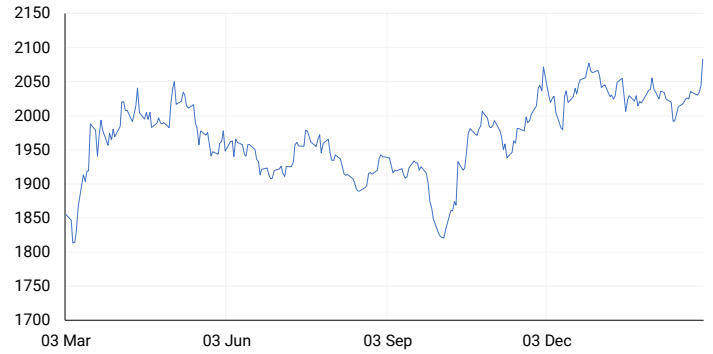
PLATINUM

One-year



GOLD

One-year



CURRENCY PAIR	LAST	CLOSE	% CHG	1D%	5D%	YTD%
USDZAR	19.12	19.12	0.02	-0.29	-0.64	4.32
GBPZAR	24.21	24.18	0.14	-0.21	-1.23	3.79
EURZAR	20.73	20.72	0.06	-0.10	-0.88	2.64
AUDZAR	12.46	12.48	-0.13	0.01	-1.59	0.18
EURUSD	1.08	1.08	0.04	0.34	0.17	-1.78
USDJPY	150.28	150.13	0.10	0.10	-0.26	6.44
GBPUSD	1.27	1.27	0.07	0.24	-0.14	-0.60
USDCHF	0.88	0.88	-0.01	-0.12	0.26	4.97

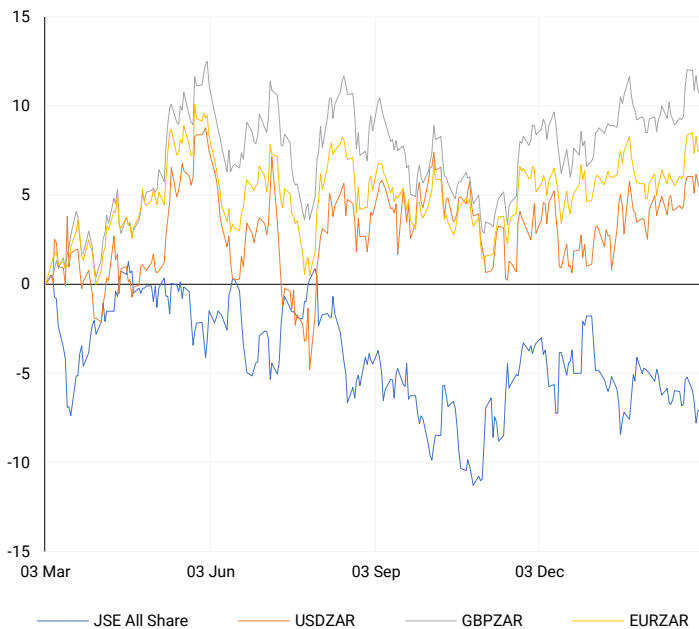
CURRENCY MARKET SUMMARY

SELECTED ITEMS

On Friday, South Africa's rand remained relatively steady following the release of a local purchasing managers' index (PMI) survey indicating a rebound in factory activity last month. The U.S. dollar experienced a slight decline this morning, influenced by reduced Treasury yields, as traders anticipated further significant economic data to gauge the timing of potential Federal Reserve interest rate adjustments. Meanwhile, Bitcoin surged to a level not seen in over two years, propelled by substantial flows into cryptocurrency exchange-traded funds.

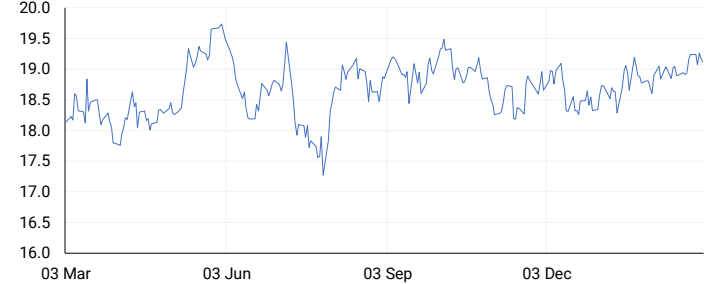
CURRENCY PAIRS vs JSE ALL SHARE

Normalised percentage performances



USDZAR

One-year



EURUSD

One-year



SOURCES | JSE, IRESS, MONEYWEB, CNBC, BBC, CNN

Disclaimer: This note is prepared for Sanlam Private Wealth (Pty) Ltd, by K2013143132 (Pty) Ltd trading as ThompsonGreen. ThompsonGreen is an independent company contracted to Sanlam Private Wealth (Pty) Ltd. The views expressed in this note are those of ThompsonGreen and/or its analysts and not necessarily the views of Sanlam Private Wealth (Pty) Ltd, Sanlam or any officer or agent thereof. K2013143132 (Pty) Ltd trading as ThompsonGreen is a research house and not a registered broker, financial adviser or financial service provider. Our editors and customer services teams also do not give personal investment advice. The information in this document is general advice only and may not be appropriate to your particular investment objectives, financial situation or particular needs. Before investing, or if you are in any doubt about your personal situation, you should seek professional advice from a stockbroker or independent financial adviser authorised by the Financial Sector Conduct Authority.