

GLOBAL OVERVIEW | SELECTED INDICES

SOUTH AFRICAN INDICES						
	CLOSE	PREVIOUS	1D%	5D%	1M%	YTD%
All Share	72633.15	72775.49	-0.20	-1.34	-2.35	-5.54
Top 40	66177.64	66337.43	-0.24	-1.55	-2.45	-6.12
Financial 15	17243.47	17406.31	-0.94	-0.54	0.22	-3.52
Industrial 25	100781.18	101031.91	-0.25	-3.41	-2.42	-2.83
Resource 10	50536.87	50045.24	0.98	0.96	-5.14	-12.16
Mid Cap	75978.27	75663.48	0.42	-0.58	-1.77	-5.52
Small Cap	72145.95	72315.05	-0.23	0.41	-1.33	-0.48
Banks	10448.24	10567.30	-1.13	-0.65	-0.04	-4.57
Retailers	6065.59	5996.83	1.15	-1.77	-3.24	-2.69
Property (J253) - TR	1933.26	1947.01	-0.71	-1.11	-0.17	3.73

AMERICAN INDICES						
	CLOSE	PREVIOUS	1D%	5D%	1M%	YTD%
Dow Jones	38989.83	39087.38	-0.25	-0.20	0.87	3.45
Nasdaq	16207.51	16274.94	-0.41	1.45	3.70	7.97
S&P 500	5130.95	5137.08	-0.12	1.21	3.48	7.57
US VIX	13.49	13.11	2.90	-1.82	-2.60	8.35

EUROPEAN INDICES						
	CLOSE	PREVIOUS	1D%	5D%	1M%	YTD%
CAC 40	7956.41	7934.17	0.28	0.34	4.80	5.48
DAX 30	17716.17	17735.07	-0.11	1.68	4.72	5.76
Eurostoxx 50	4912.92	4894.86	0.37	1.00	5.55	8.65
FTSE	7640.33	7682.50	-0.55	-0.57	0.33	-1.20

ASIAN INDICES						
	CLOSE	PREVIOUS	1D%	5D%	1M%	YTD%
Hang Seng	16595.97	16589.44	0.04	-0.23	6.84	-2.65
Nikkei 225	40109.23	39910.82	0.50	2.23	10.93	19.86
Shanghai	3039.31	3027.02	0.41	2.09	11.32	2.16

EARLY MORNING MARKETS						
	LAST	CLOSE	% CHG	1D%	5D%	YTD%
TENCENT	269.00	276.20	-2.61	-0.43	-3.83	-5.93
BHP AUS	4469.00	4423.00	1.04	-1.54	0.43	-12.26

NOTE : 5D% and 1M% are rolling percentage moves

INTERNATIONAL ECONOMIC CALENDAR | SELECTED EVENTS

TIME	AREA	TODAY'S EVENTS & RELEASES	PERIOD	EXP.	PREV.
1:30	JP	Tokyo Core CPI y/y	Feb	2.40%	1.60%
3:45	CN	Caixin Services PMI	Feb	53.40	52.70
9:15	ZA	S&P Global PMI	Feb	48.80	49.20
11:30	ZA	GDP growth Rate y/y	Q4	1.20%	-0.70%
17:00	US	ISM Services PMI	Feb	52.90	53.40

TIME	AREA	PREVIOUS SESSION'S RELEASES	PERIOD	EXP.	ACT.
1:50	JP	Capital Spending y/y	Q4	1.90%	16.40%
2:30	AU	Company Gross Profits q/q	Q4	1.60%	7.40%
12:45	EU	5-Year Bond Auction	---	---	2.86%
18:30	US	3-Month Bill Auction	---	---	5.24%
---	---	---	---	---	---

JSE ALL SHARE | BEST AND WORST ONE-DAY PERFORMERS

BEST ONE-DAY % PERFORMERS						
	CODE	CLOSE	1D%	5D%	YTD%	
AngloGold Ashanti plc	ANG	38932	8.06	8.14	10.16	
Bidvest Ltd	BVT	25314	7.85	6.86	0.34	
Harmony GM Co Ltd	HAR	12045	7.44	10.50	0.72	
DRD Gold Ltd	DRD	1440	7.14	6.98	-8.69	
Gold Fields Ltd	GFI	26692	5.98	12.15	-3.91	
Transaction Capital Ltd	TCP	1021	4.93	5.26	27.94	

WORST ONE-DAY % PERFORMERS						
	CODE	CLOSE	1D%	5D%	YTD%	
Montauk Renewables Inc	MKR	10500	-8.64	-8.70	-38.95	
Impala Platinum Hlgs Ltd	IMP	5949	-7.78	-11.12	-34.82	
MAS P.L.C	MSP	1554	-7.56	-10.38	-10.23	
Northam Platinum Hldgs Ltd	NPH	9721	-7.02	-12.07	-30.78	
African Rainbow Cap Inv	AIL	472	-5.03	-0.84	-3.48	

DIVIDEND DATA

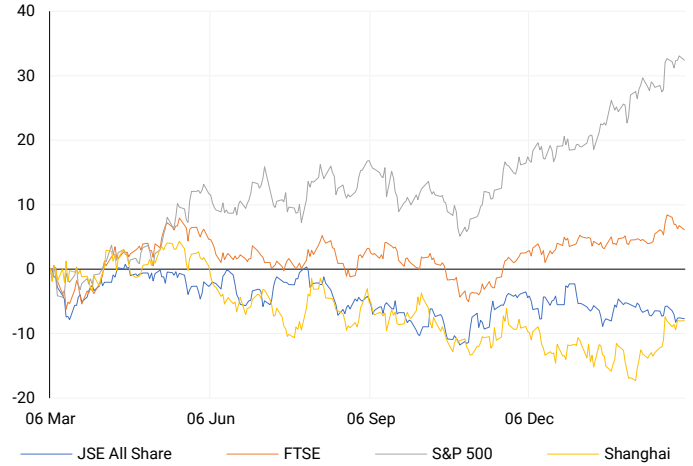
COMPANY	CODE	EXPECTED DIVIDEND	COMPANY	CODE	EXPECTED DIVIDEND
The Foschini Group	TFGP	6.5 ZARc	South32	S32	0.4 USDc
DRDGOLD	DRD	20 ZARc			
Italtile	ITE	27 ZARc			
Sappi	SAPCB	1015103 ZARc			
BHP	BHG	72 USDc			

SOURCES | JSE, IRESS, MONEYWEB, CNBC, BBC, CNN

PLEASE SEE THE BOTTOM OF THE LAST PAGE FOR THE FULL DISCLAIMER

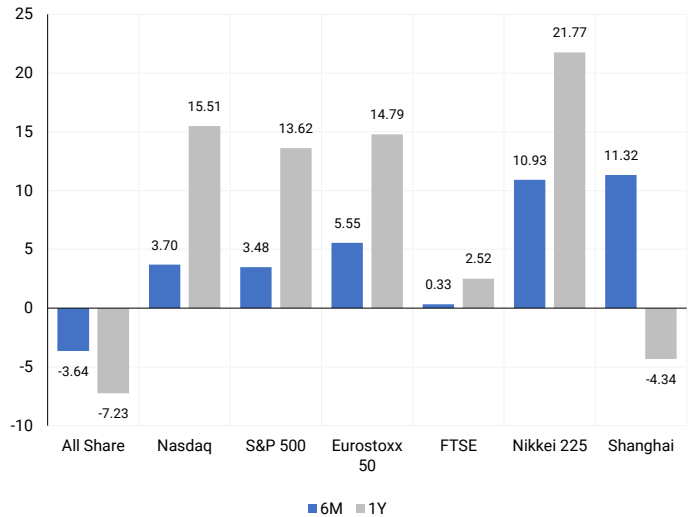
INTERNATIONAL INDICES

Normalised percentage performances - In rand terms



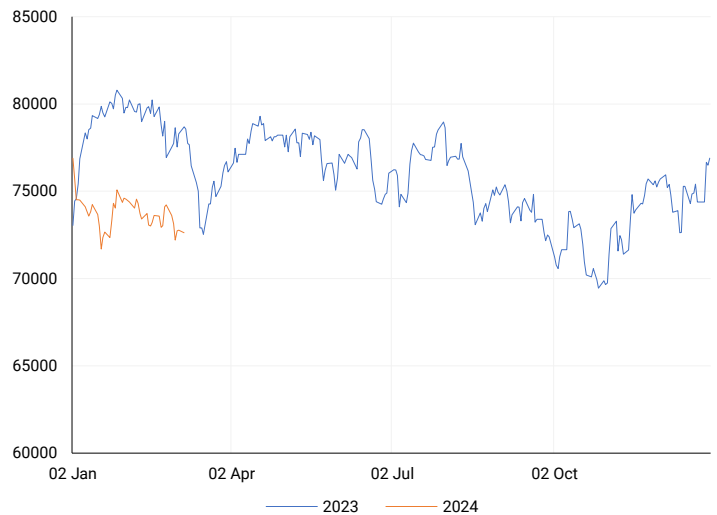
INTERNATIONAL INDICES

6-month & 1-year percentage performances



JSE ALL SHARE INDEX

2023 v 2024 to date



Last date to trade Tue, 05 March

LOCAL EQUITIES | JSE LARGE CAP COMPANIES (Cents Per Share)

COMPANY	CLOSE	PREVIOUS	1D%	5D%	1M%	YTD%
Absa Group Limited	16339	16559	-1.33	-1.44	0.34	-0.20
Anglo American plc	41180	41688	-1.22	-3.38	-5.81	-13.03
Anglo American Plat Ltd	70605	73140	-3.47	-3.98	-11.47	-26.76
Anglogold Ashanti Ltd	38932	36027	8.06	8.14	12.84	10.16
Anheuser-Busch InBev SA NV	114383	115254	-0.76	-6.52	-2.50	-4.69
BHP Group Limited	55322	55436	-0.21	0.25	-3.67	-12.66
BID Corporation Ltd	44712	44460	0.57	-1.79	-5.01	4.80
British American Tob plc	55474	56600	-1.99	-5.01	-1.84	2.44
Compagnie Fin Richemont	305671	305700	-0.01	1.36	8.93	19.05
Capitec Bank Hldgs Ltd	204900	205050	-0.07	1.52	3.09	1.12
Discovery Ltd	13515	13500	0.11	-1.08	-1.14	-5.94
Firststrand Ltd	6435	6554	-1.82	-1.00	-3.13	-12.46
Gold Fields Ltd	26692	25185	5.98	12.15	-3.53	-3.91
Glencore plc	9170	9146	0.26	1.17	-8.24	-17.87
Impala Platinum Hlgs Ltd	5949	6451	-7.78	-11.12	-15.29	-34.82
Kumba Iron Ore Ltd	52545	53454	-1.70	-2.48	-7.76	-14.53
Mondi plc	33278	33930	-1.92	-4.21	2.34	-8.33
MTN Group Ltd	8665	8406	3.08	-1.31	-8.60	-24.98
Naspers Ltd -N-	304497	312128	-2.44	-8.45	-6.71	-2.65
Prosus N.V.	54615	55751	-2.04	-7.07	-5.18	-2.54
South32 Limited	3704	3742	-1.02	1.48	-9.30	-12.21
Standard Bank Group Ltd	20507	20760	-1.22	0.02	1.86	-1.46
Shoprite Holdings Ltd	25907	25915	-0.03	-1.43	-3.36	-5.81
Sanlam Limited	7282	7433	-2.03	-0.11	2.20	0.03
Sasol Limited	14600	14638	-0.26	2.06	-8.45	-21.20
Sibanye Stillwater Ltd	1932	1966	-1.73	-5.06	-14.44	-22.41
Vodacom Group Ltd	9589	9422	1.77	1.49	2.27	-9.54

SOUTH AFRICAN MARKET SUMMARY

SELECTED ITEMS

Shares on the Johannesburg Stock Exchange closed slightly lower, with the Top-40 index dropping by 0.24%. Aspen Pharmacare, a South African drugmaker, anticipates a boost in the second half of the year from a sterile manufacturing contract for mRNA products entering the market and portfolio acquisitions. The company reported a 2% increase in half-year core profit, with normalised EBITDA growing to 5.2 billion rand (\$272.75 million) and group revenue rising by 10% to 21.1 billion rand for the six months ending in December. Additionally, AVI Ltd, a food producer and fashion retailer, reported a 17.4% growth in half-year earnings.

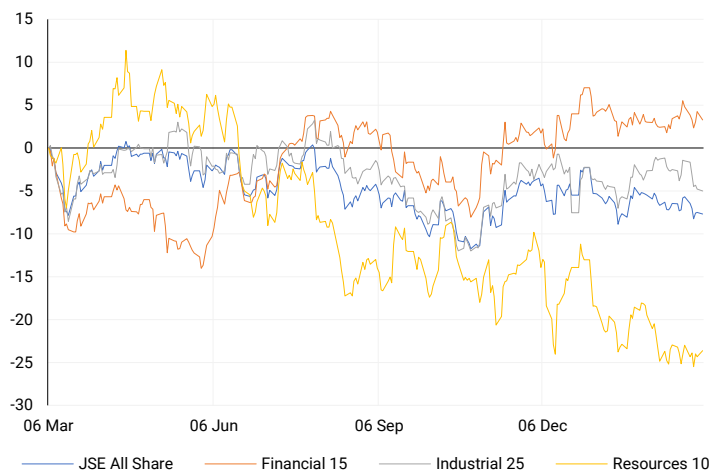
JSE TOP 40

One-year



LOCAL INDICES

Normalised percentage performances



LOCAL SENS ANNOUNCEMENTS

SELECTED RELEASE

THE BIDVEST GROUP LIMITED – Unaudited Financial Results

The financial results for the six months ending on December 31, 2023, show positive growth and improved performance for the company. Key highlights include a revenue increase of 8.8% to R62.2 billion and a trading profit increase of 11.8% to R6.5 billion, with an improved trading profit margin of 10.5%. Cash generated from operations nearly doubled to R3.7 billion after a R4.5 billion investment in working capital. Return on funds employed (ROFE) stands at 38.3%, and headline earnings per share (HEPS) rose by 5.3% to 987.9 cents, while normalized HEPS increased by 6.9% to 1,051.3 cents. Additionally, a final dividend of 467 cents was declared, marking a 6.9% increase.

BVT | 7.85% OPEN | 24375c HIGH | 25824c LOW | 24375c CLOSE | 25314c TIME | 07:15

ASPEN PHARMACARE HOLDINGS LIMITED – Unaudited Interim Group Financial Results

Aspen's recent highlights include a 10% increase in revenue to R21.1 billion (2% in constant exchange rates) compared to R19.2 billion in December 2022. Normalized EBITDA rose by 2% (a 5% decline in constant exchange rates) to R5.2 billion, compared to R5.1 billion in December 2022. Normalized headline earnings per share grew by 1% (a 5% decrease in constant exchange rates) to 688.3 cents, while headline earnings per share fell by 6% (a 12% decline in constant exchange rates) to 620.7 cents. Earnings per share dropped by 13% (an 18% decline in constant exchange rates) to 520.8 cents, down from 602.0 cents in December 2022. Operating cash flow per share surged by 44% to 553.2 cents, up from 384.3 cents in December 2022.

APN | 3.59% OPEN | 19595c HIGH | 20890c LOW | 19509c CLOSE | 20378c TIME | 12:45

AVI LIMITED – Results for the six months ended 31 December 2023

The results for the six months ending on December 31, 2023, show positive changes across key statistics: revenue increased by 7.1%, gross profit by 11.7%, operating profit by 17.1%, headline earnings by 17.4%, headline earnings per share by 17.4%, and earnings per share by 17.5%. Despite facing challenges like constrained consumer demand and infrastructure issues such as unreliable municipal infrastructure and port inefficiencies in South Africa, the company managed a satisfactory performance. Direct costs of R21.1 million were incurred due to load-shedding. Group revenue increased by 7.1%, with gross margins protected despite rising input costs. However, I&J experienced challenges like poor catch rates and lost export sales due to port inefficiencies. The group's operating profit increased by 17.1%, and headline earnings per share rose by 17.4% to 374.3 cents. An interim dividend of 202 cents per share was declared, marking a 17.4% increase. The company invested R242.0 million in upgrading facilities and improving efficiencies. The return on capital employed stood at 30.8% for the 12 months ending in December 2023.

AVI | -0.38% OPEN | 9000c HIGH | 9275c LOW | 8651c CLOSE | 8900c TIME | 07:05

EXPECTED COMPANY REPORTING SCHEDULE

COMPANY	CODE	RELEASE	DATE
Shoprite	SHP	Interim	05 Mar'24
Nedbank	NED	Final	05 Mar'24
Grindrod	GND	Final	07 Mar'24
Sanlam	SLM	Final	07 Mar'24
JSE	JSE	Final	08 Mar'24

BANK AND OTHER SELECTE PREFERENCE SHARES

COMPANY	CODE	CLOSE	CLEAN YIELD	NEXT LDT (Est.)
Investec Limited	INPR	8600	10.69	Thu, 06 Jun '24
Standard Bank	SBPP	8771	11.08	Thu, 28 Mar '24
Absa	ABSP	77900	11.18	Thu, 18 Apr '24
Capitec	CPIP	9516	10.15	Thu, 14 Mar '24
Steinhoff	SHFF	8450	12.21	Thu, 18 Apr '24
Grindrod	GNDP	9006	11.97	Thu, 21 Mar '24
Netcare	NTCP	8600	12.00	Thu, 09 May '24
Discovery	DSBP	10299	12.43	Thu, 07 Mar '24
Invicta	IVTP	9805	12.36	Thu, 27 Jun '24

LOCAL EQUITIES | JSE MID CAP COMPANIES (Cents Per Share)

COMPANY	CODE	CLOSE	PREVIOUS	1D%	1M%	YTD%
Aspen Pharmacare Hldgs Ltd	APN	20378	19672	3.59	6.41	0.14
African Rainbow Min Ltd	ARI	17202	17029	1.02	-5.25	-13.99
AVI Ltd	AVI	8900	8934	-0.38	3.91	8.44
Barloworld Ltd	BAW	6780	6774	0.09	-9.62	-14.18
Bidvest Ltd	BVT	25314	23472	7.85	5.26	0.34
Bytes Technology Grp PLC	BYI	13909	14059	-1.07	-5.86	-2.88
Capital&Counties Prop plc	CCO	3096	3112	-0.51	-1.71	-4.74
Clicks Group Ltd	CLS	29719	29844	-0.42	-0.94	-8.76
Dis-Chem Pharmacies Ltd	DCP	3052	3066	-0.46	0.23	-0.55
Distell Group Hldgs Ltd	DGH	96	94.5	1.59	6.67	11.63
Exxaro Resources Ltd	EXX	18016	18093	-0.43	-1.62	-11.89
Fortress Real Est INV A	FFA	18.76	18.78	-0.11	1.74	-98.64
Fortress Real Est INV B	FFB	1635	1660	-1.51	115.13	130.28
Growthpoint Prop Ltd	GRT	1172	1172	0.00	-1.51	0.34
Harmony GM Co Ltd	HAR	12045	11211	7.44	-0.78	0.72
Hammerson plc	HMN	618	615	0.49	-1.90	-9.12
Investec Ltd	INL	12034	12007	0.22	-0.68	-4.18
Investec plc	INP	12021	11981	0.33	-0.56	-4.56
Italtile Ltd	ITE	1056	1079	-2.13	-9.74	-5.71
Life Healthc Grp Hldgs Ltd	LHC	1786	1760	1.48	0.79	-2.78
MultiChoice Group Ltd	MCG	10900	10460	4.21	20.71	34.53
Mediclinic Int plc	MEI	21.5	18.5	16.22	26.47	-17.31
Montauk Renewables Inc	MKR	10500	11493	-8.64	-22.77	-38.95
Mr Price Group Ltd	MRP	17250	17000	1.47	1.66	10.01
Momentum Met Hldgs Ltd	MTM	2089	2091	-0.10	0.92	-4.57
Ninety One Plc	N91	3945	3954	-0.23	-4.43	-8.51
Nedbank Group Ltd	NED	21651	22020	-1.68	-0.08	0.13
Northam Platinum Hldgs Ltd	NPH	9721	10455	-7.02	-21.58	-30.78
NEPI Rockcastle N.V.	NRP	13379	13462	-0.62	5.90	5.86
Netcare Limited	NTC	1379	1372	0.51	0.00	-3.16
Ninety One Limited	NY1	3888	3920	-0.82	-4.96	-9.52
Old Mutual Limited	OMU	1200	1220	-1.64	-2.36	-8.12
OUTsurance Group Ltd	OUT	4144	4174	-0.72	-0.69	-1.80
Pick n Pay Stores Ltd	PIK	1995	1990	0.25	-16.07	-14.27
Pepkor Holdings Ltd	PPH	1870	1873	-0.16	-4.20	-4.74
Quilter Plc	QLT	2449	2350	4.21	0.70	0.86
Redefine Properties Ltd	RDF	395	399	-1.00	-5.50	2.60
Remgro Ltd	REM	15133	14900	1.56	-2.99	-6.86
Resilient REIT Limited	RES	4704	4734	-0.63	1.80	6.21
Reinet Investments S.C.A	RNI	48589	48585	0.01	6.88	4.22
Sappi Ltd	SAP	4529	4523	0.13	-0.42	2.47
Santam Limited	SNT	30000	30433	-1.42	3.67	4.69
The Spar Group Ltd	SPP	9590	9650	-0.62	-19.06	-18.66
Sirius Real Estate Ltd	SRE	2120	2128	-0.38	-1.85	-4.29
Tiger Brands Ltd	TBS	19458	19897	-2.21	-6.06	-3.33
Transaction Capital Ltd	TCP	1021	973	4.93	26.05	27.94
The Foschini Group Limited	TFG	10775	10616	1.50	-4.05	-2.89
Thungela Resources Ltd	TGA	10625	10710	-0.79	-10.07	-30.92
Telkom SA SOC Ltd	TKG	2855	2802	1.89	2.66	-4.00
Truworths Int Ltd	TRU	8074	7757	4.09	5.99	8.59
Textainer Group Hldgs Ltd	TXT	94000	94500	-0.53	1.29	2.07
Woolworths Holdings Ltd	WHL	6369	6329	0.63	-7.20	-11.79
Zeda Limited	ZZD	1180	1180	0.00	-6.79	-7.45

LOCAL EQUITIES | JSE SMALL CAP COMPANIES (Cents Per Share)

COMPANY	CODE	CLOSE	PREVIOUS	1D%	1M%	YTD%
ArcelorMittal SA Limited	ACL	131	135	-2.96	3.97	-20.12
ADVTECH Ltd	ADH	2748	2757	-0.33	4.53	11.98
Altron Limited A	AEL	1026	1050	-2.29	2.50	0.10
AECI Limited	AFE	9511	9718	-2.13	-2.95	-13.29
Alexander Forbes Grp Hldgs	AFH	655	639	2.50	5.82	-0.76
Afrimat Limited	AFT	6279	6160	1.93	-4.82	-0.33
African Rainbow Cap Inv	AIL	472	497	-5.03	-3.67	-3.48
Adcock Ingram Hldgs Ltd	AIP	5634	5565	1.24	-1.61	-6.26
Astral Foods Ltd	ARL	14800	14461	2.34	-5.18	0.98
Attacq Limited	ATT	931	948	-1.79	-5.00	0.98
Brait PLC	BAT	168	172	-2.33	-6.67	-7.69
Blue Label Telecoms Ltd	BLU	361	369	-2.17	3.14	-6.96
Coronation Fund Mngrs Ld	CML	3109	3133	-0.77	-1.30	-0.22
Curro Holdings Limited	COH	1093	1133	-3.53	-8.76	-6.18
Cashbuild Ltd	CSB	14349	14000	2.49	-12.77	-14.04
DRD Gold Ltd	DRD	1440	1344	7.14	-3.49	-8.69
Datatec Ltd	DTC	4052	4040	0.30	1.30	0.05
Emira Property Fund Ltd	EMI	870	875	-0.57	-1.14	1.75
Equites Prop Fund Ltd	EQU	1269	1295	-2.01	-9.23	-9.03
Famous Brands Ltd	FBR	5686	5696	-0.18	0.11	-1.85
Fairvest Limited B	FTB	350	360	-2.78	-6.17	1.74
Grindrod Ltd	GND	1270	1270	0.00	4.96	10.82
Hosken Cons Inv Ltd	HCI	17642	17628	0.08	0.07	-12.92
Hudaco Industries Ltd	HDC	16345	16699	-2.12	-1.54	1.76
Hyprop Inv Ltd	HYP	3170	3127	1.38	-2.40	1.90
Investec Property Fund Ltd	IPF	769	769	0.00	-8.56	-3.88
JSE Ltd	JSE	8751	8941	-2.13	-1.01	-5.33
KAP Industrial Hldgs Ltd	KAP	253	257	-1.56	10.00	-3.44
Karooooo Ltd	KRO	50700	50500	0.40	3.47	6.74
PSG Konsult Limited	KST	1488	1512	-1.59	-1.91	-3.06
Libstar Holdings Ltd	LBR	345	350	-1.43	-1.15	-1.43
Lighthouse Properties plc	LTE	760	770	-1.30	-0.13	3.40
Industrials REIT Limited	MLI	0.5	0.5	0.00	-16.67	-28.57
MAS P.L.C	MSP	1554	1681	-7.56	-15.95	-10.23
Metair Investments Ltd	MTA	1139	1160	-1.81	-21.23	-35.83
Motus Holdings Ltd	MTH	9419	9439	-0.21	-8.96	-7.20
Murray & Roberts Hldgs	MUR	127	127	0.00	7.63	-14.77
Oceana Group Ltd	OCE	7160	7188	-0.39	0.14	1.32
Omnia Holdings Ltd	OMN	6221	6220	0.02	-3.43	-4.83
Pan African Resource plc	PAN	485	482	0.62	11.75	18.58
PPC Limited	PPC	362	364	-0.55	-2.95	-9.27
Raubex Group Ltd	RBX	2744	2800	-2.00	-7.92	-1.01
RFG Holdings Limited	RFG	1365	1370	-0.36	2.25	1.11
Reunert Ltd	RLO	6601	6538	0.96	9.83	10.13
SA Corp Real Estate Ltd	SAC	251	251	0.00	-0.40	8.19
Super Group Ltd	SPG	2869	2757	4.06	-0.73	-3.56
Stor-Age Prop REIT Ltd	SSS	1406	1413	-0.50	-0.78	7.66
Southern Sun LTD	SSU	515	512	0.59	-2.83	-1.90
Sun International Ltd	SUI	3900	3920	-0.51	-7.03	-4.88
Tharisa plc	THA	1250	1270	-1.57	-14.38	-17.27
Tsogo Sun Gaming Ltd	TSG	1145	1150	-0.43	-0.43	-6.53
Vukile Property Fund Ltd	VKE	1513	1480	2.23	0.27	7.15
Wilson Bayly Hlm-Ovc Ltd	WBO	13458	13400	0.43	3.45	3.48

10-YEAR BOND YIELD | SELECTED ITEMS (Basis Point Change)

REGION	YIELD	1D	1M	1Y
United States	4.22%	4	20	--
United Kingdom	4.11%	0	20	27
Germany	2.39%	-2	15	-32
Japan	0.71%	0	5	--
South African 10Y	10.13%	2	26	2

SOUTH AFRICAN 10-YEAR

2023 vs 2024 to date

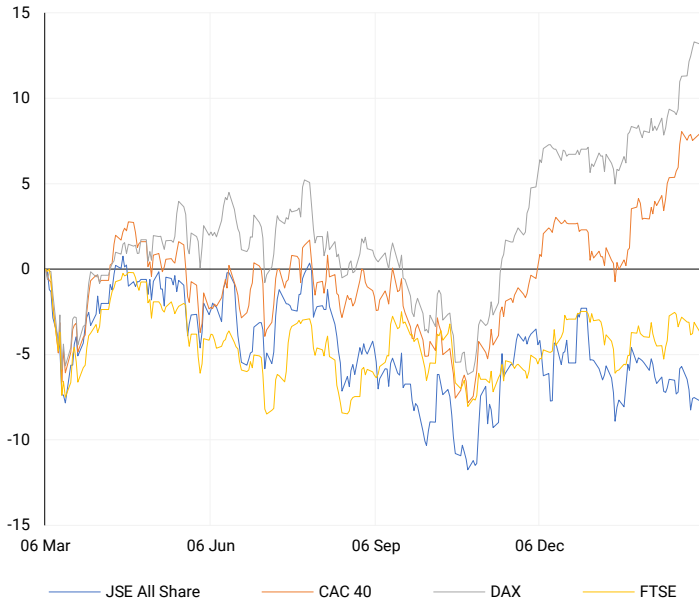


GLOBAL INTEREST RATES | SELECTED ITEMS

REGION	DATE CHANGED	CURRENT RATE
United States	Wed, 26 Jul '23	5.25%-5.50%
United Kingdom	Thu, 03 Aug '23	5.25%
European	Thu, 27 Jul '23	4.25%
SA Repo Rate	Thu, 25 May '23	8.25%
SA Prime Rate	Thu, 25 May '23	11.75%

EUROPEAN INDICES

Normalised percentage performances

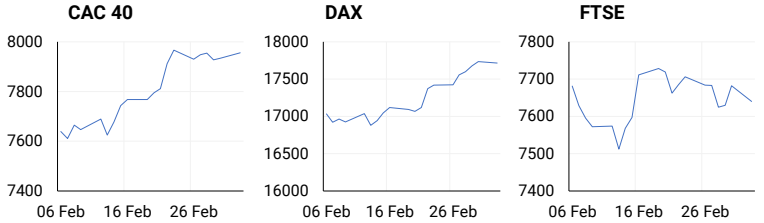


EUROPEAN MARKET SUMMARY

SELECTED ITEMS

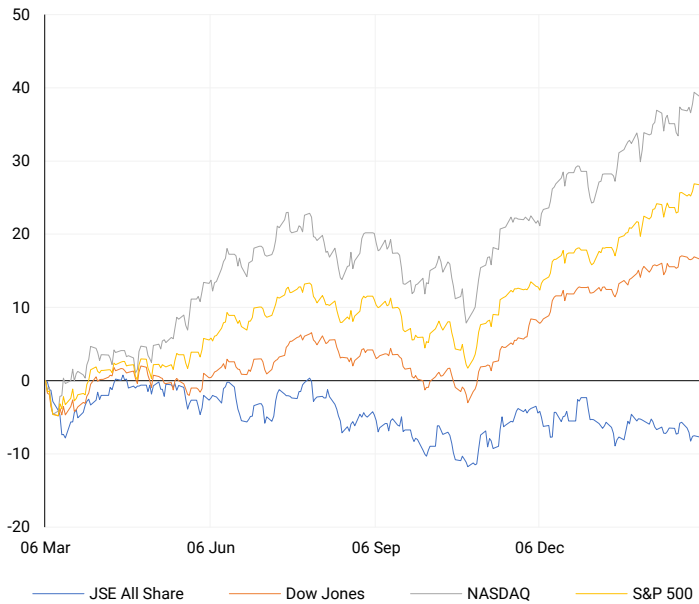
European stocks closed just below all-time highs on Monday, as investors absorbed recent strong gains while adopting a cautious stance ahead of the European Central Bank's monetary policy meeting scheduled for later in the week. The pan-European STOXX 600 edged down by 0.03%, after reaching another record high earlier in the session and nearing the 500-mark. Tech stocks continued to drive market advances worldwide, benefiting from optimism surrounding artificial intelligence, with Europe's tech index hitting its highest level in over two decades. However, losses in cyclical sectors like miners, travel and leisure, and retailers tempered overall market gains.

EUROPEAN INDICES	CLOSE	PREVIOUS	1D%	5D%	1M%	YTD%
CAC 40	7956.41	7934.17	0.28	0.34	4.80	5.48
DAX 30	17716.17	17735.07	-0.11	1.68	4.72	5.76
Eurostoxx 50	4912.92	4894.86	0.37	1.00	5.55	8.65
FTSE	7640.33	7682.50	-0.55	-0.57	0.33	-1.20



AMERICAN INDICES

Normalised percentage performances

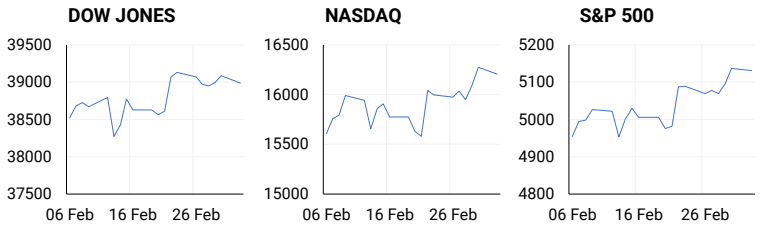


AMERICAN MARKET SUMMARY

SELECTED ITEMS

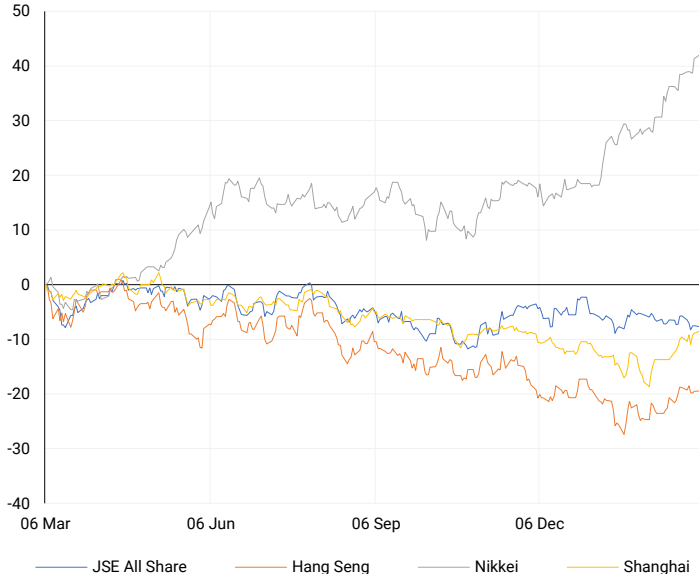
On Monday, U.S. stocks saw a decline, causing the S&P 500 and Nasdaq Composite to step back from their record highs. However, technology stocks associated with the artificial intelligence surge showed resilience, with Nvidia experiencing gains of over 3%. Super Micro Computer also surged by 18% following the announcement that it would join the S&P 500 later this month. Investors are anticipating the release of the ADP Employment Survey and January job openings data on Wednesday, offering additional insights into the labor market. Additionally, manufacturing and nonfarm payrolls data for February are expected on Friday, providing further indicators of economic trends.

AMERICAN INDICES	CLOSE	PREVIOUS	1D%	5D%	1M%	YTD%
Dow Jones	38989.83	39087.38	-0.25	-0.20	0.87	3.45
Nasdaq	16207.51	16274.94	-0.41	1.45	3.70	7.97
S&P 500	5130.95	5137.08	-0.12	1.21	3.48	7.57
US VIX	13.49	13.11	2.90	-1.82	-2.60	8.35



ASIAN INDICES

Normalised percentage performances

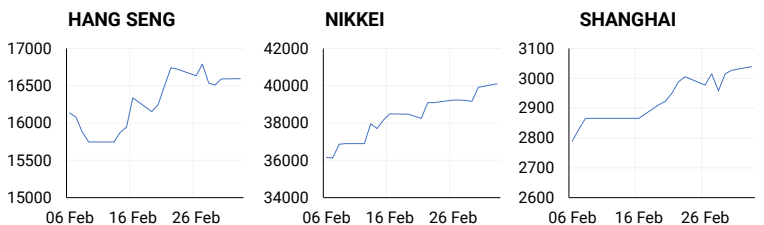


ASIAN MARKET SUMMARY

SELECTED ITEMS

In the Asia-Pacific markets, there is a mixed trend as China's "Two Sessions" meeting kicks off. Investors are closely monitoring the details of China's economic plans, particularly after the country set a GDP growth target of "around 5%" for 2024. China also plans to increase defense spending by 7.2% in 2024, anticipating an inflation rate rise to "around 3%." South Korea reported a 0.6% growth in its economy for the fourth quarter of 2023 based on revised GDP figures, while Tokyo, Japan, experienced a rebound in inflation from a 22-month low in February.

ASIAN INDICES	CLOSE	PREVIOUS	1D%	5D%	1M%	YTD%
Hang Seng	16595.97	16589.44	0.04	-0.23	6.84	-2.65
Nikkei 225	40109.23	39910.82	0.50	2.23	10.93	19.86
Shanghai	3039.31	3027.02	0.41	2.09	11.32	2.16



COMMODITIES MARKET SUMMARY

SELECTED ITEMS

Gold prices reached a three-month peak on Monday due to increasing anticipation of a U.S. Federal Reserve interest rate reduction in June. This morning, oil prices declined for the second consecutive day as China, the largest global crude importer, failed to reassure investors with its economic transformation plans amid sluggish growth since the COVID-19 pandemic. Meanwhile, copper prices experienced a boost to one-week highs on Monday ahead of a crucial political meeting in China that might signal potential growth stimulus. However, concerns about weakening demand from the largest consumer tempered the overall gains.

COMMODITY	LAST	CLOSE	% CHG	1D%	5D%	YTD%
Brent Crude	82.60	82.85	-0.30	-0.65	0.38	7.49
Gold	2115.34	2114.49	0.04	1.51	4.10	2.50
Palladium	950.28	961.03	-1.12	0.92	0.86	-12.42
Platinum	889.09	895.15	-0.68	0.93	1.73	-9.33
Silver	23.72	23.90	-0.75	3.23	6.11	0.45

BRENT CRUDE

One-year



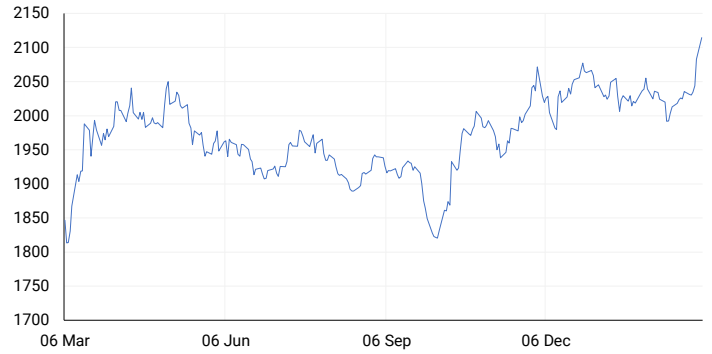
PLATINUM

One-year



GOLD

One-year



CURRENCY PAIR	LAST	CLOSE	% CHG	1D%	5D%	YTD%
USDZAR	19.07	19.04	0.15	-0.38	-1.01	3.92
GBPZAR	24.18	24.17	0.06	-0.06	-1.25	3.73
EURZAR	20.69	20.67	0.08	-0.25	-1.27	2.38
AUDZAR	12.40	12.39	0.02	-0.69	-1.78	-0.51
EURUSD	1.09	1.09	-0.04	0.14	0.02	-1.65
USDJPY	150.52	150.53	-0.01	0.27	-0.13	6.73
GBPUSD	1.27	1.27	-0.06	0.29	0.05	-0.32
USDCHF	0.89	0.88	0.06	0.17	0.56	5.15

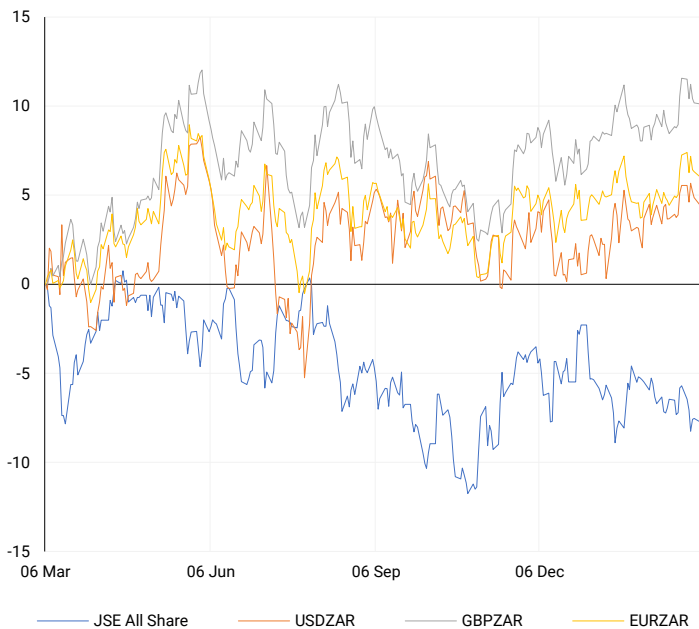
CURRENCY MARKET SUMMARY

SELECTED ITEMS

South Africa's rand strengthened on Monday in anticipation of the release of gross domestic product (GDP) figures and a comprehensive purchasing managers' index (PMI) survey for the entire economy. The dollar maintained its position against the yuan as investors absorbed numerous policy announcements from China. Bitcoin, on the other hand, saw notable activity, rising 1.2% to \$68,341 after a surge of over 7% on Monday. This increase in value was attributed to inflows into cryptocurrency exchange-traded funds, particularly in the United States, highlighting the growing interest in blockchain assets.

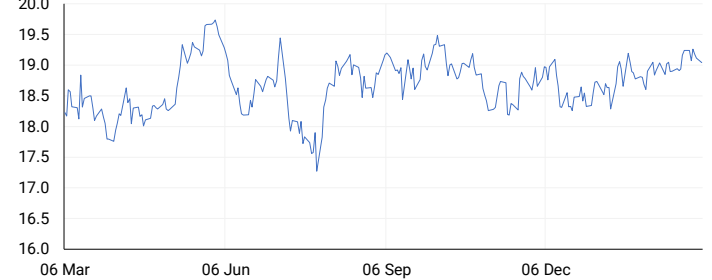
CURRENCY PAIRS vs JSE ALL SHARE

Normalised percentage performances



USDZAR

One-year



EURUSD

One-year



SOURCES | JSE, IRESS, MONEYWEB, CNBC, BBC, CNN

Disclaimer: This note is prepared for Sanlam Private Wealth (Pty) Ltd, by K2013143132 (Pty) Ltd trading as ThompsonGreen. ThompsonGreen is an independent company contracted to Sanlam Private Wealth (Pty) Ltd. The views expressed in this note are those of ThompsonGreen and/or its analysts and not necessarily the views of Sanlam Private Wealth (Pty) Ltd, Sanlam or any officer or agent thereof. K2013143132 (Pty) Ltd trading as ThompsonGreen is a research house and not a registered broker, financial adviser or financial service provider. Our editors and customer services teams also do not give personal investment advice. The information in this document is general advice only and may not be appropriate to your particular investment objectives, financial situation or particular needs. Before investing, or if you are in any doubt about your personal situation, you should seek professional advice from a stockbroker or independent financial adviser authorised by the Financial Sector Conduct Authority.