

GLOBAL OVERVIEW | SELECTED INDICES

SOUTH AFRICAN INDICES		CLOSE	PREVIOUS	1D%	5D%	1M%	YTD%
All Share		73604.11	73578.18	0.04	1.20	-0.95	-4.28
Top 40		67143.77	67122.71	0.03	1.20	-0.93	-4.75
Financial 15		17168.68	17448.38	-1.60	-0.23	-0.03	-3.94
Industrial 25		100644.31	101031.52	-0.38	-0.85	-4.11	-2.96
Resource 10		53852.66	52376.62	2.82	7.10	3.97	-6.40
Mid Cap		77323.10	77227.67	0.12	2.33	0.55	-3.84
Small Cap		72186.29	72253.41	-0.09	0.23	-1.10	-0.42
Banks		10401.28	10570.59	-1.60	-0.11	0.07	-5.00
Retailers		6093.53	6077.29	0.27	2.58	-2.46	-2.25
Property (J253) - TR		1957.78	1964.11	-0.32	0.12	0.67	5.05

AMERICAN INDICES		CLOSE	PREVIOUS	1D%	5D%	1M%	YTD%
Dow Jones		38791.35	38661.05	0.34	-0.53	0.29	2.92
Nasdaq		16273.38	16031.54	1.51	1.13	3.28	8.41
S&P 500		5157.36	5104.76	1.03	1.20	3.25	8.12
US VIX		14.44	14.50	-0.41	7.76	12.55	15.98

EUROPEAN INDICES		CLOSE	PREVIOUS	1D%	5D%	1M%	YTD%
CAC 40		8016.22	7954.74	0.77	1.12	5.32	6.27
DAX 30		17842.85	17716.71	0.71	0.93	5.44	6.51
Eurostoxx 50		4974.22	4915.49	1.19	1.98	6.31	10.01
FTSE		7692.46	7679.31	0.17	0.82	0.84	-0.53

ASIAN INDICES		CLOSE	PREVIOUS	1D%	5D%	1M%	YTD%
Hang Seng		16229.78	16438.09	-1.27	-1.71	0.92	-4.80
Nikkei 225		39598.71	40090.78	-1.23	1.10	9.63	18.33
Shanghai		3027.40	3039.93	-0.41	0.41	6.99	1.76

EARLY MORNING MARKETS		LAST	CLOSE	% CHG	1D%	5D%	YTD%
TENCENT		272.40	271.00	0.52	-4.78	-2.24	-7.70
BHP AUS		4389.00	4386.00	0.07	1.41	0.11	-12.99

NOTE : 5D% and 1M% are rolling percentage moves

INTERNATIONAL ECONOMIC CALENDAR | SELECTED EVENTS

TIME	AREA	TODAY'S EVENTS & RELEASES	PERIOD	EXP.	PREV.
9:00	DE	PPI y/y	Jan	-6.70%	-8.60%
12:00	EA	GDP Growth Rate y/y 3rd Est	Q4	0.10%	0.00%
14:00	US	Fed Williams Speech	---	---	---
15:30	US	Non Farm Payrolls	Feb	195K	353K
15:30	US	Unemployment Rate	Feb	3.70%	3.70%

TIME	AREA	PREVIOUS SESSION'S RELEASES	PERIOD	EXP.	ACT.
8:00	ZA	Foreign Exchange Reserves	Feb	\$61.00B	\$61.65B
11:00	ZA	Current Account	Q4	-R50B	-R165.5B
15:15	EA	Deposit Facility Rate	---	4.00%	4.00%
15:15	EA	ECB Interest Rate Decision	---	4.50%	4.50%
15:45	EA	ECB Press Conference	---	---	---

JSE ALL SHARE | BEST AND WORST ONE-DAY PERFORMERS

BEST ONE-DAY % PERFORMERS		CODE	CLOSE	1D%	5D%	YTD%
Impala Platinum Hlgs Ltd		IMP	6554	7.07	1.17	-28.19
Sibanye Stillwater Ltd		SSW	2048	4.86	3.07	-17.75
Raubex Group Ltd		RBX	2902	4.77	3.64	4.69
Tharisa plc		THA	1234	4.22	-3.59	-18.33
Anglo American plc		AGL	44339	4.14	5.52	-6.36
Southern Sun LTD		SSU	525	3.96	0.00	0.00

WORST ONE-DAY % PERFORMERS		CODE	CLOSE	1D%	5D%	YTD%
Montauk Renewables Inc		MKR	9500	-5.09	-15.48	-44.77
Quilter Plc		QLT	2340	-4.49	0.47	-3.62
Super Group Ltd		SPG	2635	-4.15	-0.23	-11.43
Metair Investments Ltd		MTA	1069	-4.04	-14.14	-39.77
Momentum Met Hldgs Ltd		MTM	2037	-3.96	-2.26	-6.94

DIVIDEND DATA

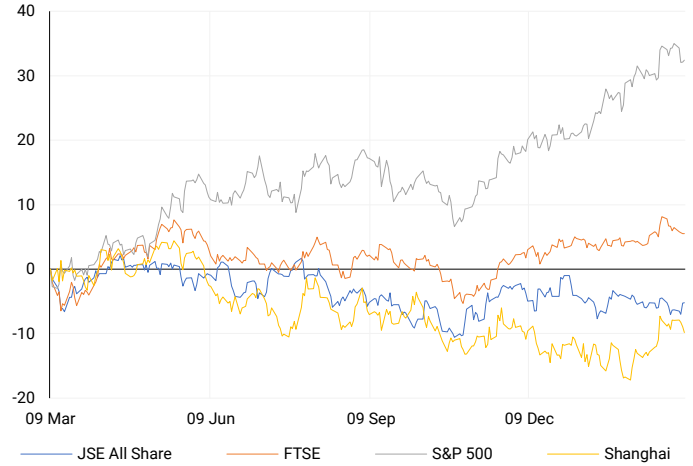
COMPANY	CODE	EXPECTED DIVIDEND	COMPANY	CODE	EXPECTED DIVIDEND
Sasol	SOL	200 ZARc	City Lodge Hotels	CLH	6 ZARc
Gold Fields	GFI	420 ZARc	Adcock Ingram Holdings	AIP	125 ZARc
Transpaco	TPC	80 ZARc	AngloGold Ashanti	ANG	19 USDc
Zeder Investments	ZED	20 ZARc	NEPI Rockcastle N.V.	NRP	25.6 EURc
Kumba Iron Ore	KIO	2420 ZARc	Anglo American plc	AGL	19 USDc

SOURCES | JSE, IRESS, MONEYWEB, CNBC, BBC, CNN

PLEASE SEE THE BOTTOM OF THE LAST PAGE FOR THE FULL DISCLAIMER

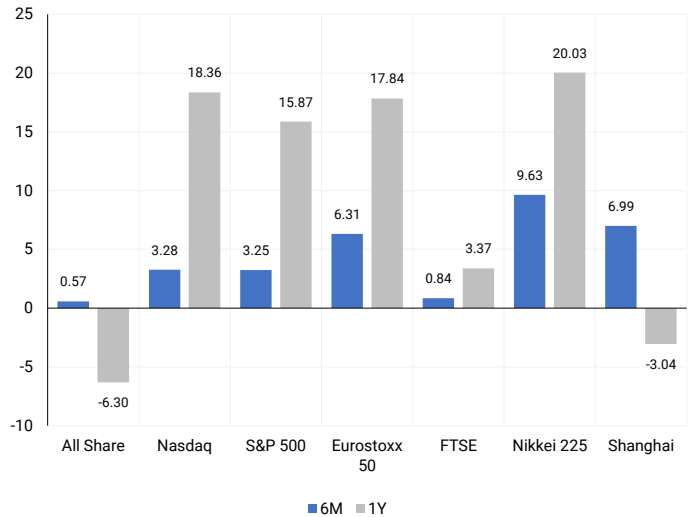
INTERNATIONAL INDICES

Normalised percentage performances - In rand terms



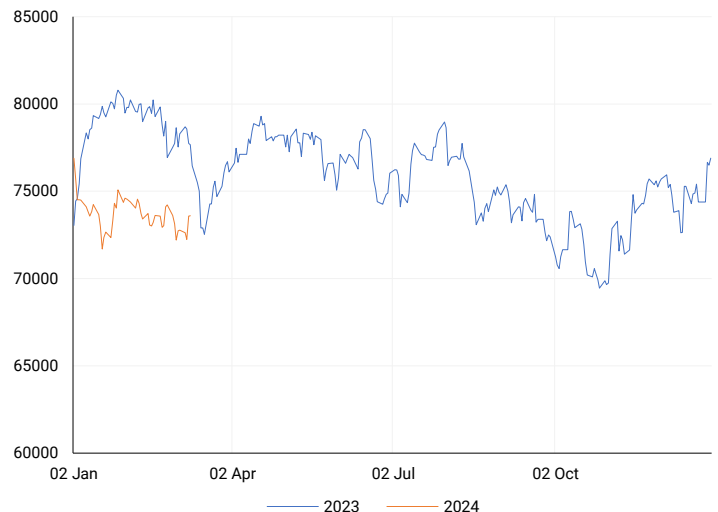
INTERNATIONAL INDICES

6-month & 1-year percentage performances



JSE ALL SHARE INDEX

2023 v 2024 to date



Last date to trade Tue, 12 March

## LOCAL EQUITIES | JSE LARGE CAP COMPANIES (Cents Per Share)

COMPANY	CLOSE	PREVIOUS	1D%	5D%	1M%	YTD%
Absa Group Limited	16405	16660	-1.53	0.30	-0.22	0.21
Anglo American plc	44339	42577	4.14	5.52	4.94	-6.36
Anglo American Plat Ltd	73147	70900	3.17	-0.74	-5.15	-24.12
Anglogold Ashanti Ltd	41956	40920	2.53	16.22	23.10	18.72
Anheuser-Busch InBev SA NV	114882	115320	-0.38	-2.26	-6.13	-4.28
BHP Group Limited	54950	54420	0.97	-0.89	-3.38	-13.25
BID Corporation Ltd	45642	45983	-0.74	1.72	-1.50	6.98
British American Tob plc	55150	55550	-0.72	-3.99	-1.06	1.84
Compagnie Fin Richemont	307686	302250	1.80	0.31	9.54	19.83
Capitec Bank Hldgs Ltd	203500	206869	-1.63	0.85	-0.61	0.43
Discovery Ltd	13413	13616	-1.49	-1.30	-2.66	-6.65
Firststrand Ltd	6400	6603	-3.07	-1.20	-1.75	-12.94
Gold Fields Ltd	28815	28564	0.88	14.44	5.76	3.73
Glencore plc	9546	9393	1.63	4.26	-0.56	-14.50
Impala Platinum Hlgs Ltd	6554	6121	7.07	1.17	-5.08	-28.19
Kumba Iron Ore Ltd	53919	53676	0.45	0.42	-2.03	-12.30
Mondi plc	33050	33498	-1.34	-3.23	0.11	-8.95
MTN Group Ltd	8592	8618	-0.30	2.90	-8.32	-25.61
Naspers Ltd -N-	297264	300029	-0.92	-5.78	-13.17	-4.97
Prosus N.V.	54169	54102	0.12	-3.87	-10.31	-3.34
South32 Limited	3700	3658	1.15	1.29	-7.55	-12.30
Standard Bank Group Ltd	20022	20177	-0.77	-0.79	1.66	-3.79
Shoprite Holdings Ltd	26655	27000	-1.28	3.23	-0.87	-3.09
Sanlam Limited	7200	7423	-3.00	-2.11	-1.37	-1.10
Sasol Limited	14765	14650	0.78	2.02	-4.61	-20.31
Sibanye Stillwater Ltd	2048	1953	4.86	3.07	-3.71	-17.75
Vodacom Group Ltd	9559	9837	-2.83	1.67	0.20	-9.82

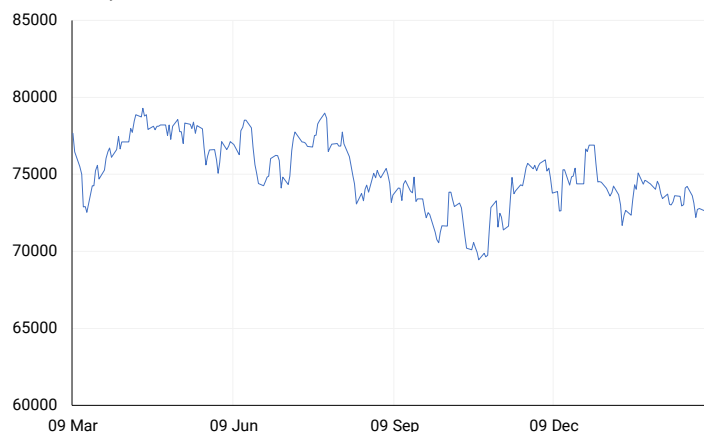
## SOUTH AFRICAN MARKET SUMMARY

### SELECTED ITEMS

On the stock market, the Top-40 index closed nearly unchanged. South Africa's central bank released data indicating a slight decrease in net foreign reserves to \$56.652 billion by the end of February, while gross reserves increased to \$61.653 billion during the same period. Additionally, the country's current account deficit widened substantially in the fourth quarter of 2023 to 2.3% of gross domestic product (GDP) from the revised 0.5% in the previous quarter.

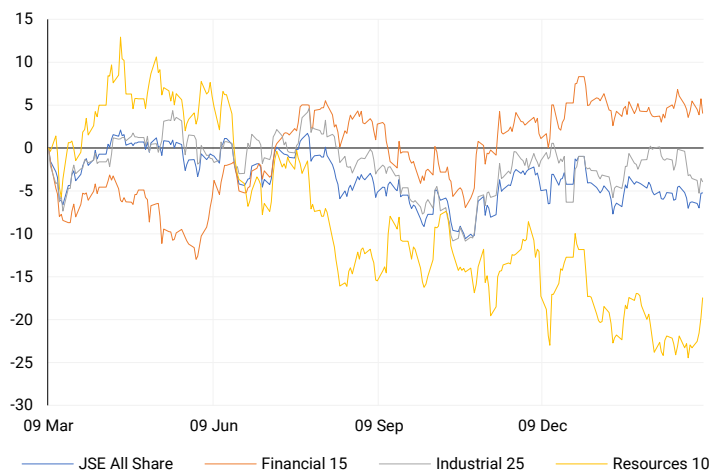
### JSE TOP 40

One-year



## LOCAL INDICES

Normalised percentage performances



## EXPECTED COMPANY REPORTING SCHEDULE

COMPANY	CODE	RELEASE	DATE
JSE	JSE	Final	08 Mar'24
ABSA	ABG	Final	11 Mar'24
Old Mutual	OMU	Final	14 Mar'24
Standard Bank	SBK	Final	14 Mar'24
Absa Bank	ABSP	Final	15 Mar'24

## BANK AND OTHER SELECTE PREFERENCE SHARES

COMPANY	CODE	CLOSE	CLEAN YIELD	NEXT LDT (Est.)
Investec Limited	INPR	8650	10.69	Thu, 06 Jun '24
Standard Bank	SBPP	8770	11.08	Thu, 28 Mar '24
Absa	ABSP	77200	11.18	Thu, 18 Apr '24
Capitec	CPIP	10200	10.15	Thu, 14 Mar '24
Steinhoff	SHFF	8621	12.21	Thu, 18 Apr '24
Grindrod	GNDP	9220	11.97	Thu, 21 Mar '24
Netcare	NTCP	8500	12.00	Thu, 09 May '24
Discovery	DSBP	10190	12.43	Thu, 07 Mar '24
Invicta	IVTP	9805	12.36	Thu, 27 Jun '24

## LOCAL SENS ANNOUNCEMENTS

### SELECTED RELEASE

#### EXXARO RESOURCES LIMITED – Trading Statement

As of December 31, 2022, the unit reported earnings of 6,016 cents for HEPS (Headline Earnings Per Share). Looking ahead to December 31, 2023, the expected earnings range for HEPS is between 5,053 and 4,211 cents, indicating an anticipated decrease of 16% to 30% compared to the previous year, potentially ranging from a decrease of 963 to 1,805 cents. In terms of EBITDA (Earnings Before Interest, Taxes, Depreciation, and Amortization), the reported figure stood at R19,002 million by the end of December 2022. For December 31, 2023, the projected EBITDA range is between R14,632 million and R11,971 million, suggesting an expected decrease of 23% to 37% compared to the previous year, potentially ranging from a decrease of R4,370 million to R7,031 million.

EXX | 0.16% OPEN | 18125c HIGH | 18310c LOW | 17746c CLOSE | 18297c TIME | 07:05

#### SANLAM LIMITED – Audited Annual Results

For the 12 months ending December 31, 2023, the unit's earnings and shareholders' fund information showed significant growth and stability. Net results from financial services, both in terms of actual and cash, increased to R12,379 million compared to R10,473 million in 2022, marking an 18% rise. Similarly, net operational earnings surged to R13,889 million from R11,077 million, indicating a robust 25% increase. Headline earnings also saw substantial growth, reaching R14,467 million from R9,687 million in the previous year, a remarkable 49% increase. Despite a slight increase in the weighted average number of shares, adjusted weighted number of shares decreased marginally by 2%. Earnings per share metrics exhibited significant growth across the board: net result from financial services per share and cash net result per share rose by 21%, net operational earnings per share increased by 28%, and headline earnings per share soared by 48%. Dividend per share also experienced a notable uptick, rising to 400 cents from 360 cents, reflecting an 11% increase. In terms of business volumes, total new business volumes saw a substantial increase of 18%, totalling R396,590 million, while total net client cash flows decreased by 41%, amounting to R35,672 million. Notably, new business volumes in life insurance and investment management witnessed significant growth, with respective increases of 14% and 22%. However, net client cash flows in investment management plummeted by 99%. The group equity value showed a positive trajectory, reaching R149,904 million compared to R140,776 million, with a corresponding increase in group equity value per share from 6,380 cents to 7,086 cents. Return on group equity value per share also saw a substantial rise, climbing to 16.7% from 4.2%, while adjusted return on group equity value per share increased to 19.5% from 14.9%. Overall, these figures indicate strong financial performance and growth across various aspects of the unit's operations.

SLM | -3.00% OPEN | 7350c HIGH | 7382c LOW | 7141c CLOSE | 7200c TIME | 12:07

#### SUN INTERNATIONAL LIMITED – Trading Statement

The forecasted earnings per share for the upcoming period show significant improvements compared to the previous year's figures. Basic earnings per share are expected to range between 477 cents and 505 cents per share, marking a more than 100% increase from the prior year's profit of 224 cents per share. Headline earnings per share are anticipated to be between 412 cents and 434 cents per share, indicating an 82% to 92% increase from the previous year's profit of 226 cents per share. Adjusted headline earnings per share are projected to range between 456 cents and 478 cents per share, representing a 4% to 9% increase from the prior year's profit of 439 cents per share. These forecasts reflect a positive outlook for the unit's financial performance in the upcoming period.

SUI | 0.95% OPEN | 3888c HIGH | 3985c LOW | 3888c CLOSE | 3930c TIME | 12:15

**LOCAL EQUITIES | JSE MID CAP COMPANIES** (Cents Per Share)

COMPANY	CODE	CLOSE	PREVIOUS	1D%	1M%	YTD%
Aspen Pharmacare Hldgs Ltd	APN	20000	19942	0.29	2.82	-1.72
African Rainbow Min Ltd	ARI	18319	17652	3.78	1.58	-8.41
AVI Ltd	AVI	9000	9052	-0.57	2.75	9.66
Barloworld Ltd	BAW	6477	6622	-2.19	-15.10	-18.01
Bidvest Ltd	BVT	25862	26208	-1.32	11.66	2.51
Bytes Technology Grp PLC	BYI	14000	13667	2.44	-7.36	-2.24
Capital&Counties Prop plc	CCO	3149	3157	-0.25	-0.32	-3.11
Clicks Group Ltd	CLS	31000	31144	-0.46	3.08	-4.82
Dis-Chem Pharmacies Ltd	DCP	3220	3179	1.29	7.51	4.92
Distell Group Hldgs Ltd	DGH	96	96	0.00	6.67	11.63
Exxaro Resources Ltd	EXX	18297	18268	0.16	1.16	-10.52
Fortress Real Est INV A	FFA	18.78	18.68	0.54	1.29	-98.64
Fortress Real Est INV B	FFB	1649	1628	1.29	6.58	132.25
Growthpoint Prop Ltd	GRT	1200	1195	0.42	0.50	2.74
Harmony GM Co Ltd	HAR	13369	13092	2.12	14.19	11.79
Hammerson plc	HMN	619	619	0.00	-0.96	-8.97
Investec Ltd	INL	12054	12133	-0.65	-0.01	-4.02
Investec plc	INP	12120	12148	-0.23	1.41	-3.77
Italtile Ltd	ITE	1001	1005	-0.40	-6.97	-10.63
Life Healthc Grp Hldgs Ltd	LHC	1766	1765	0.06	-1.62	-3.86
MultiChoice Group Ltd	MCG	11407	11350	0.50	20.07	40.79
Mediclinic Int plc	MEI	22	21	4.76	25.71	-15.38
Montauk Renewables Inc	MKR	9500	10009	-5.09	-22.13	-44.77
Mr Price Group Ltd	MRP	17586	17450	0.78	4.13	12.15
Momentum Met Hldgs Ltd	MTM	2037	2121	-3.96	-0.63	-6.94
Ninety One Plc	N91	3990	4013	-0.57	-2.49	-7.47
Nedbank Group Ltd	NED	22360	22450	-0.40	2.40	3.41
Northam Platinum Hldgs Ltd	NPH	10240	9890	3.54	-13.51	-27.08
NEPI Rockcastle N.V.	NRP	13385	13663	-2.03	5.60	5.91
Netcare Limited	NTC	1291	1286	0.39	-6.99	-9.34
Ninety One Limited	NY1	3909	3946	-0.94	-3.53	-9.03
Old Mutual Limited	OMU	1203	1215	-0.99	-1.88	-7.89
OUTsurance Group Ltd	OUT	4141	4151	-0.24	-0.41	-1.87
Pick n Pay Stores Ltd	PIK	1860	1915	-2.87	-27.40	-20.07
Pepkor Holdings Ltd	PPH	1910	1881	1.54	-2.40	-2.70
Quilter Plc	QLT	2340	2450	-4.49	-3.66	-3.62
Redefine Properties Ltd	RDF	401	397	1.01	-3.84	4.16
Remgro Ltd	REM	15031	15175	-0.95	-1.91	-7.49
Resilient REIT Limited	RES	4729	4730	-0.02	1.03	6.77
Reinet Investments S.C.A	RNI	47625	48997	-2.80	3.30	2.15
Sappi Ltd	SAP	4729	4698	0.66	6.82	6.99
Santam Limited	SNT	30417	30461	-0.14	1.39	6.14
The Spar Group Ltd	SPP	9350	9350	0.00	-19.05	-20.70
Sirius Real Estate Ltd	SRE	2148	2151	-0.14	2.78	-3.02
Tiger Brands Ltd	TBS	20849	20155	3.44	0.24	3.58
Transaction Capital Ltd	TCP	996	1002	-0.60	24.19	24.81
The Foschini Group Limited	TFG	10813	10771	0.39	-4.19	-2.55
Thungela Resources Ltd	TGA	11350	11200	1.34	-5.12	-26.20
Telkom SA SOC Ltd	TKG	2773	2800	-0.96	-2.74	-6.76
Truworths Int Ltd	TRU	8021	8067	-0.57	6.56	7.88
Textainer Group Hldgs Ltd	TXT	93250	93800	-0.59	-0.85	1.26
Woolworths Holdings Ltd	WHL	6351	6374	-0.36	-8.01	-12.04
Zeda Limited	ZZD	1162	1200	-3.17	-6.82	-8.86

**LOCAL EQUITIES | JSE SMALL CAP COMPANIES** (Cents Per Share)

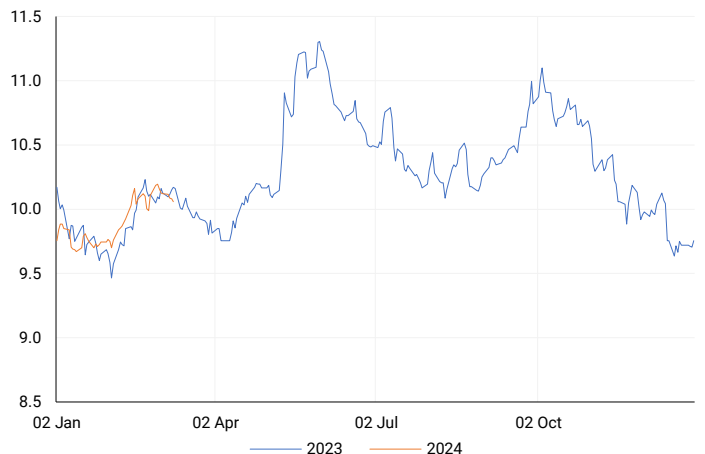
COMPANY	CODE	CLOSE	PREVIOUS	1D%	1M%	YTD%
ArcelorMittal SA Limited	ACL	130	133	-2.26	8.33	-20.73
ADVTECH Ltd	ADH	2861	2820	1.45	9.16	16.59
Altron Limited A	AEL	1100	1100	0.00	11.11	7.32
AECI Limited	AFE	9450	9417	0.35	-4.47	-13.85
Alexander Forbes Grp Hldgs	AFH	641	645	-0.62	-1.38	-2.88
Afrimat Limited	AFT	5955	6188	-3.77	-5.48	-5.48
African Rainbow Cap Inv	AIL	456	461	-1.08	-7.13	-6.75
Adcock Ingram Hldgs Ltd	AIP	5500	5530	-0.54	0.11	-8.49
Astral Foods Ltd	ARL	14422	14614	-1.31	-7.40	-1.60
Attacq Limited	ATT	966	960	0.63	-0.41	4.77
Brait PLC	BAT	165	166	-0.60	-10.81	-9.34
Blue Label Telecoms Ltd	BLU	364	358	1.68	6.74	-6.19
Coronation Fund Mngrs Ld	CML	3113	3133	-0.64	-1.11	-0.10
Curro Holdings Limited	COH	1135	1115	1.79	-4.78	-2.58
Cashbuild Ltd	CSB	14400	14500	-0.69	-8.29	-13.74
DRD Gold Ltd	DRD	1500	1470	2.04	0.07	-4.88
Datatec Ltd	DTC	4000	4021	-0.52	-1.36	-1.23
Emira Property Fund Ltd	EMI	880	888	-0.90	-4.35	2.92
Equites Prop Fund Ltd	EQU	1257	1272	-1.18	-9.89	-9.89
Famous Brands Ltd	FBR	5487	5650	-2.88	-0.56	-5.28
Fairvest Limited B	FTB	372	362	2.76	1.64	8.14
Grindrod Ltd	GND	1275	1285	-0.78	7.05	11.26
Hosken Cons Inv Ltd	HCI	16998	17254	-1.48	-4.70	-16.10
Hudaco Industries Ltd	HDC	16300	16001	1.87	-1.21	1.48
Hyprop Inv Ltd	HYP	3225	3242	-0.52	-1.98	3.66
Investec Property Fund Ltd	IPF	779	780	-0.13	-7.15	-2.63
JSE Ltd	JSE	8732	8678	0.62	0.30	-5.54
KAP Industrial Hldgs Ltd	KAP	266	263	1.14	19.82	1.53
Karooooo Ltd	KRO	49999	49000	2.04	4.16	5.26
PSG Konsult Limited	KST	1495	1480	1.01	-1.71	-2.61
Libstar Holdings Ltd	LBR	350	345	1.45	2.94	0.00
Lighthouse Properties plc	LTE	785	770	1.95	0.00	6.80
Industrials REIT Limited	MLI	0.6	0.4	50.00	-14.29	-14.29
MAS P.L.C	MSP	1609	1602	0.44	-11.93	-7.05
Metair Investments Ltd	MTA	1069	1114	-4.04	-23.31	-39.77
Motus Holdings Ltd	MTH	9300	9339	-0.42	-7.99	-8.37
Murray & Roberts Hldgs	MUR	125	130	-3.85	5.04	-16.11
Oceana Group Ltd	OCE	7210	7232	-0.30	-0.69	2.02
Omnia Holdings Ltd	OMN	6200	6200	0.00	-2.10	-5.16
Pan African Resource plc	PAN	509	504	0.99	19.48	24.45
PPC Limited	PPC	356	359	-0.84	-5.57	-10.78
Raubex Group Ltd	RBX	2902	2770	4.77	0.80	4.69
RFG Holdings Limited	RFG	1360	1360	0.00	4.29	0.74
Reunert Ltd	RLO	6531	6609	-1.18	7.44	8.96
SA Corp Real Estate Ltd	SAC	252	254	-0.79	-2.70	8.62
Super Group Ltd	SPG	2635	2749	-4.15	-6.66	-11.43
Stor-Age Prop REIT Ltd	SSS	1397	1413	-1.13	-0.99	6.97
Southern Sun LTD	SSU	525	505	3.96	-2.78	0.00
Sun International Ltd	SUI	3930	3893	0.95	-3.23	-4.15
Tharisa plc	THA	1234	1184	4.22	-13.40	-18.33
Tsogo Sun Gaming Ltd	TSG	1093	1115	-1.97	-5.86	-10.78
Vukile Property Fund Ltd	VKE	1550	1555	-0.32	0.00	9.77
Wilson Bayly Hlm-Ovc Ltd	WBO	13624	13878	-1.83	2.31	4.75

**10-YEAR BOND YIELD | SELECTED ITEMS** (Basis Point Change)

REGION	YIELD	1D	1M	1Y
United States	4.09%	-1	-3	--
United Kingdom	4.00%	1	1	18
Germany	2.30%	-2	-1	-38
Japan	0.73%	2	2	--
South African 10Y	10.07%	-3	15	-10

**SOUTH AFRICAN 10-YEAR**

2023 vs 2024 to date

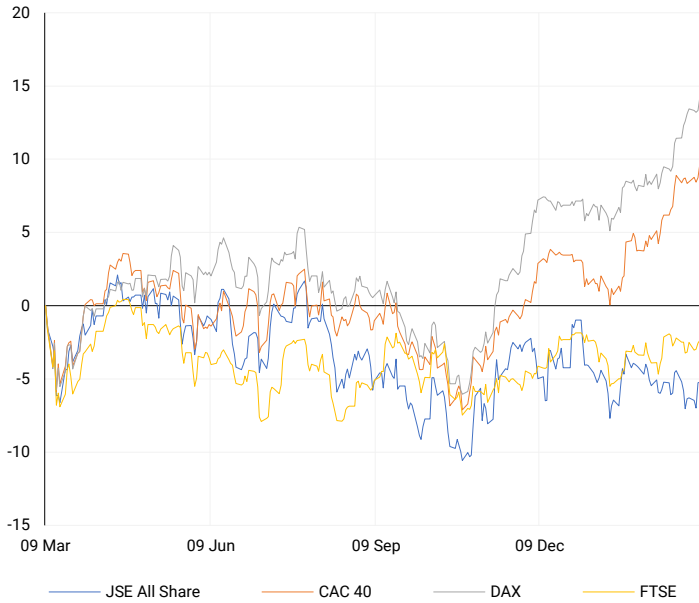


**GLOBAL INTEREST RATES | SELECTED ITEMS**

REGION	DATE CHANGED	CURRENT RATE
United States	Wed, 26 Jul '23	5.25%-5.50%
United Kingdom	Thu, 03 Aug '23	5.25%
European	Thu, 27 Jul '23	4.25%
SA Repo Rate	Thu, 25 May '23	8.25%
SA Prime Rate	Thu, 25 May '23	11.75%

## EUROPEAN INDICES

Normalised percentage performances



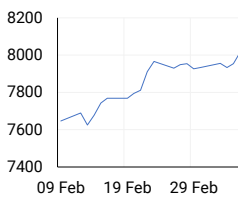
## EUROPEAN MARKET SUMMARY

### SELECTED ITEMS

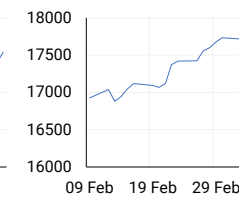
European markets closed higher on Thursday following the European Central Bank's updated inflation forecast, which reignited optimism for the 2024 economic outlook. The pan-European Stoxx 600 ended 1.05% higher at 503.45 points, breaking the significant 500 level for the first time during the session. Despite holding interest rates steady at a record 4%, the ECB revised its 2024 inflation forecast downward to 2.3% from 2.7%. Additionally, it noted weaker-than-expected euro zone growth of 0.6% for the year. Investors, already anticipating rate cuts starting in June, interpreted the updated macro forecasts as further confirmation for that month. ECB President Christine Lagarde remarked that market pricing was aligning more closely with the ECB's own view.

EUROPEAN INDICES	CLOSE	PREVIOUS	1D%	5D%	1M%	YTD%
CAC 40	8016.22	7954.74	0.77	1.12	5.32	6.27
DAX 30	17842.85	17716.71	0.71	0.93	5.44	6.51
Eurostoxx 50	4974.22	4915.49	1.19	1.98	6.31	10.01
FTSE	7692.46	7679.31	0.17	0.82	0.84	-0.53

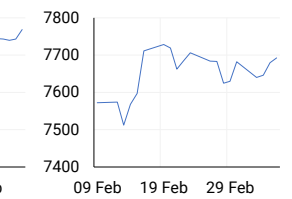
### CAC 40



### DAX

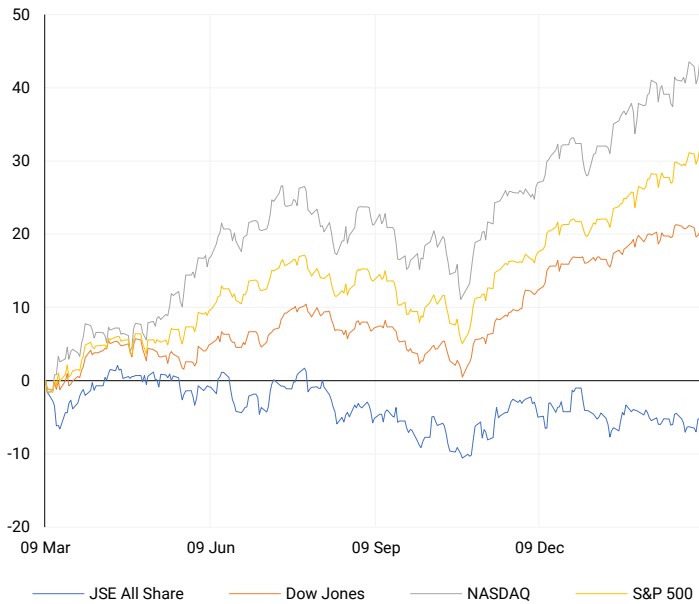


### FTSE



## AMERICAN INDICES

Normalised percentage performances



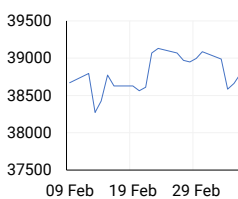
## AMERICAN MARKET SUMMARY

### SELECTED ITEMS

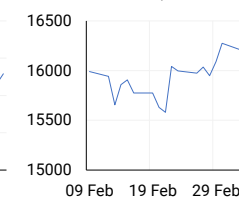
On Thursday, Wall Street surged as the S&P 500 reached a record closing high with a 1% increase, while the Nasdaq composite soared by 1.5%, driven by growing investor optimism about potential Federal Reserve rate cuts later this year. Federal Reserve Chair Jerome Powell's remarks before a U.S. Senate committee, suggesting that the central bank is nearing confidence in declining inflation towards the 2% target, further fuelled this sentiment. Additionally, Labor Department data showed no change in the number of Americans filing new claims for unemployment benefits, indicating a labour market that continues to ease.

AMERICAN INDICES	CLOSE	PREVIOUS	1D%	5D%	1M%	YTD%
Dow Jones	38791.35	38661.05	0.34	-0.53	0.29	2.92
Nasdaq	16273.38	16031.54	1.51	1.13	3.28	8.41
S&P 500	5157.36	5104.76	1.03	1.20	3.25	8.12
US VIX	14.44	14.50	-0.41	7.76	12.55	15.98

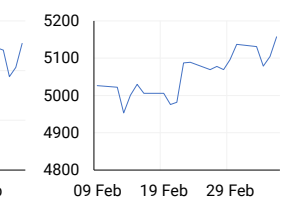
### DOW JONES



### NASDAQ

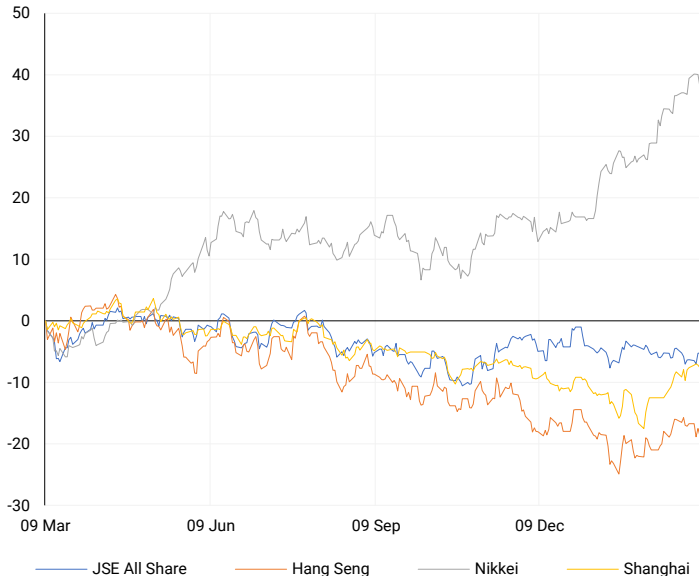


### S&P 500



## ASIAN INDICES

Normalised percentage performances



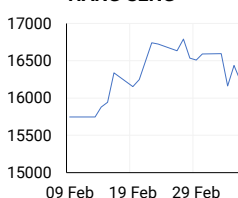
## ASIAN MARKET SUMMARY

### SELECTED ITEMS

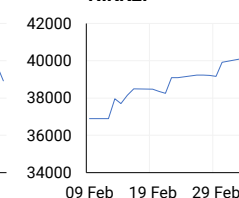
Asian stocks reached a seven-month high this morning, following global markets as investors welcomed the likelihood of upcoming interest rate cuts by major central banks, which kept the dollar and Treasury yields subdued. However, Japan stood out as an exception due to growing expectations that the Bank of Japan (BOJ) might exit negative interest rates this month. This development strengthened the yen and caused domestic bond yields to increase.

ASIAN INDICES	CLOSE	PREVIOUS	1D%	5D%	1M%	YTD%
Hang Seng	16229.78	16438.09	-1.27	-1.71	0.92	-4.80
Nikkei 225	39598.71	40090.78	-1.23	1.10	9.63	18.33
Shanghai	3027.40	3039.93	-0.41	0.41	6.99	1.76

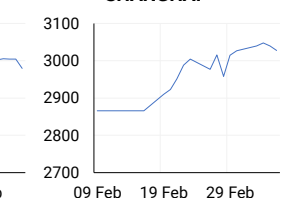
### HANG SENG



### NIKKEI



### SHANGHAI



## COMMODITIES MARKET SUMMARY

### SELECTED ITEMS

Gold prices were poised for their largest weekly increase in five months this morning, nearing a record high, buoyed by Federal Reserve Chair Jerome Powell's remarks that strengthened investor expectations for a potential U.S. rate cut in June. Meanwhile, oil prices climbed this morning, supported by increasing demand in the United States and China, the world's leading oil consumers, and by the positive signal from the U.S. Federal Reserve regarding the possibility of rate cuts.

COMMODITY	LAST	CLOSE	% CHG	1D%	5D%	YTD%
Brent Crude	83.45	83.24	0.25	0.41	-0.45	7.99
Gold	2157.82	2159.76	-0.09	0.54	5.66	4.69
Palladium	1040.81	1035.25	0.54	-0.55	9.84	-5.65
Platinum	916.71	919.45	-0.30	0.62	4.72	-6.87
Silver	24.35	24.33	0.10	0.65	7.30	2.27

## BRENT CRUDE

One-year



## PLATINUM

One-year



## GOLD

One-year



CURRENCY PAIR	LAST	CLOSE	% CHG	1D%	5D%	YTD%
USDZAR	18.68	18.68	0.00	-0.78	-2.57	1.94
GBPZAR	23.94	23.93	0.05	-0.19	-1.25	2.70
EURZAR	20.46	20.45	0.04	-0.32	-1.41	1.29
AUDZAR	12.39	12.37	0.16	0.06	-0.90	-0.73
EURUSD	1.09	1.09	-0.02	0.45	1.34	-0.81
USDJPY	147.85	148.05	-0.14	-0.89	-1.29	4.97
GBPUSD	1.28	1.28	-0.01	0.61	1.46	0.60
USDCHF	0.88	0.88	-0.01	-0.49	-0.76	4.29

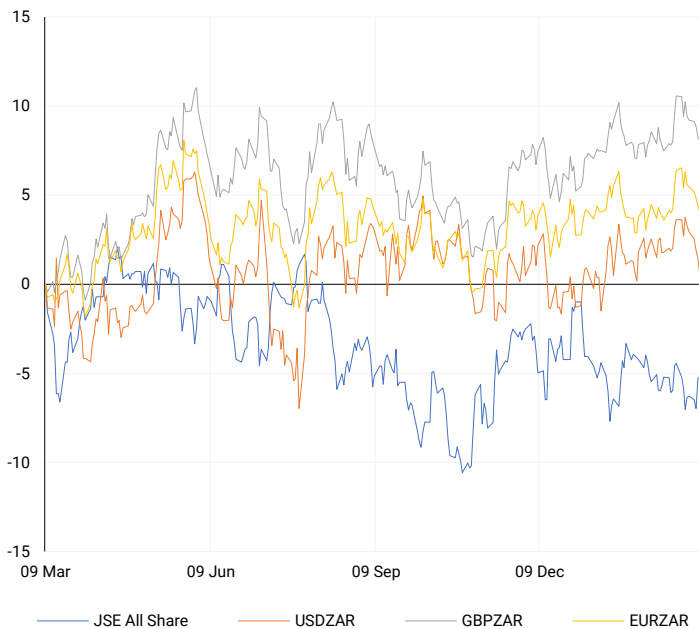
## CURRENCY MARKET SUMMARY

### SELECTED ITEMS

On Thursday, South Africa's rand strengthened against a weaker U.S. dollar following comments from U.S. Federal Reserve Chair Jerome Powell hinting at potential rate cuts later in the year. This morning, the dollar was set for its most significant weekly decline of the year, influenced by Federal Reserve Chair Jerome Powell's remarks indicating increased confidence in potential interest rate cuts in the coming months.

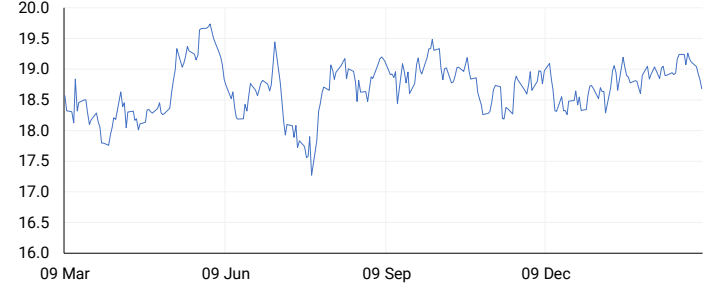
## CURRENCY PAIRS vs JSE ALL SHARE

Normalised percentage performances



## USDZAR

One-year



## EURUSD

One-year



SOURCES | JSE, IRESS, MONEYWEB, CNBC, BBC, CNN

**Disclaimer:** This note is prepared for Sanlam Private Wealth (Pty) Ltd, by K2013143132 (Pty) Ltd trading as ThompsonGreen. ThompsonGreen is an independent company contracted to Sanlam Private Wealth (Pty) Ltd. The views expressed in this note are those of ThompsonGreen and/or its analysts and not necessarily the views of Sanlam Private Wealth (Pty) Ltd, Sanlam or any officer or agent thereof. K2013143132 (Pty) Ltd trading as ThompsonGreen is a research house and not a registered broker, financial adviser or financial service provider. Our editors and customer services teams also do not give personal investment advice. The information in this document is general advice only and may not be appropriate to your particular investment objectives, financial situation or particular needs. Before investing, or if you are in any doubt about your personal situation, you should seek professional advice from a stockbroker or independent financial adviser authorised by the Financial Sector Conduct Authority.