

GLOBAL OVERVIEW | SELECTED INDICES

| SOUTH AFRICAN INDICES |           |           |       |       |       |       |
|-----------------------|-----------|-----------|-------|-------|-------|-------|
|                       | CLOSE     | PREVIOUS  | 1D%   | 5D%   | 1M%   | YTD%  |
| All Share             | 73717.78  | 73604.11  | 0.15  | 1.29  | -0.01 | -4.13 |
| Top 40                | 67297.57  | 67143.77  | 0.23  | 1.45  | 0.15  | -4.54 |
| Financial 15          | 17271.44  | 17168.68  | 0.60  | -0.77 | 0.90  | -3.37 |
| Industrial 25         | 100299.54 | 100644.31 | -0.34 | -0.72 | -4.09 | -3.29 |
| Resource 10           | 54219.65  | 53852.66  | 0.68  | 8.34  | 6.86  | -5.76 |
| Mid Cap               | 77712.99  | 77323.10  | 0.50  | 2.71  | 1.84  | -3.36 |
| Small Cap             | 71809.22  | 72186.29  | -0.52 | -0.70 | -0.99 | -0.94 |
| Banks                 | 10469.73  | 10401.28  | 0.66  | -0.92 | 1.07  | -4.37 |
| Retailers             | 6151.74   | 6093.53   | 0.96  | 2.58  | -0.67 | -1.31 |
| Property (J253) - TR  | 1964.75   | 1957.78   | 0.36  | 0.91  | 1.21  | 5.42  |

| AMERICAN INDICES |          |          |       |       |       |       |
|------------------|----------|----------|-------|-------|-------|-------|
|                  | CLOSE    | PREVIOUS | 1D%   | 5D%   | 1M%   | YTD%  |
| Dow Jones        | 38722.69 | 38791.35 | -0.18 | -0.93 | -0.01 | 2.74  |
| Nasdaq           | 16085.11 | 16273.38 | -1.16 | -1.17 | 1.85  | 7.15  |
| S&P 500          | 5123.69  | 5157.36  | -0.65 | -0.26 | 2.52  | 7.42  |
| US VIX           | 14.74    | 14.44    | 2.08  | 12.43 | 15.25 | 18.39 |

| EUROPEAN INDICES |          |          |       |       |      |       |
|------------------|----------|----------|-------|-------|------|-------|
|                  | CLOSE    | PREVIOUS | 1D%   | 5D%   | 1M%  | YTD%  |
| CAC 40           | 8028.01  | 8016.22  | 0.15  | 1.18  | 4.73 | 6.43  |
| DAX 30           | 17814.51 | 17842.85 | -0.16 | 0.45  | 5.01 | 6.34  |
| Eurostoxx 50     | 4961.11  | 4974.22  | -0.26 | 1.35  | 5.31 | 9.72  |
| FTSE             | 7659.74  | 7692.46  | -0.43 | -0.30 | 0.85 | -0.95 |

| ASIAN INDICES |          |          |      |       |      |       |
|---------------|----------|----------|------|-------|------|-------|
|               | CLOSE    | PREVIOUS | 1D%  | 5D%   | 1M%  | YTD%  |
| Hang Seng     | 16353.39 | 16229.78 | 0.76 | -1.42 | 2.99 | -4.07 |
| Nikkei 225    | 39688.94 | 39598.71 | 0.23 | -0.56 | 7.67 | 18.60 |
| Shanghai      | 3046.02  | 3027.40  | 0.61 | 0.63  | 6.28 | 2.39  |

| EARLY MORNING MARKETS |         |         |       |       |       |        |
|-----------------------|---------|---------|-------|-------|-------|--------|
|                       | LAST    | CLOSE   | % CHG | 1D%   | 5D%   | YTD%   |
| TENCENT               | 277.00  | 270.00  | 2.59  | -0.37 | -2.67 | -8.04  |
| BHP AUS               | 4285.00 | 4395.00 | -2.50 | 0.00  | 1.90  | -12.81 |

NOTE : 5D% and 1M% are rolling percentage moves

INTERNATIONAL ECONOMIC CALENDAR | SELECTED EVENTS

| TIME  | AREA | TODAY'S EVENTS & RELEASES   | PERIOD | EXP.   | PREV. |
|-------|------|-----------------------------|--------|--------|-------|
| 1:50  | JP   | GDP Growth Annualized Final | Q4     | -3.30% | 0.90% |
| 12:30 | DE   | 3-Month Bubill Auction      | ---    | ---    | 3.77% |
| 17:30 | US   | 3-Month Bill Auction        | ---    | ---    | 5.24% |
| ---   | EA   | Eurogroup Meeting           | ---    | ---    | ---   |
| ---   | CN   | New Loans                   | ---    | ---    | ---   |

| TIME  | AREA | PREVIOUS SESSION'S RELEASES | PERIOD | EXP.   | ACT.   |
|-------|------|-----------------------------|--------|--------|--------|
| 9:00  | DE   | PPI y/y                     | Jan    | -6.70% | -4.40% |
| 12:00 | EA   | GDP Growth Rate y/y 3rd Est | Q4     | 0.10%  | 0.00%  |
| 14:00 | US   | Fed Williams Speech         | ---    | ---    | ---    |
| 15:30 | US   | Non Farm Payrolls           | Feb    | 195K   | 275K   |
| 15:30 | US   | Unemployment Rate           | Feb    | 3.70%  | 3.90%  |

JSE ALL SHARE | BEST AND WORST ONE-DAY PERFORMERS

| BEST ONE-DAY % PERFORMERS  |      |       |      |       |        |  |
|----------------------------|------|-------|------|-------|--------|--|
|                            | CODE | CLOSE | 1D%  | 5D%   | YTD%   |  |
| Impala Platinum Hlgs Ltd   | IMP  | 6939  | 5.87 | 7.56  | -23.97 |  |
| Altron Limited A           | AEL  | 1145  | 4.09 | 9.05  | 11.71  |  |
| Northam Platinum Hldgs Ltd | NPH  | 10656 | 4.06 | 1.92  | -24.12 |  |
| Sibanye Stillwater Ltd     | SSW  | 2129  | 3.96 | 8.29  | -14.50 |  |
| Truworths Int Ltd          | TRU  | 8300  | 3.48 | 7.00  | 11.63  |  |
| African Rainbow Min Ltd    | ARI  | 18925 | 3.31 | 11.13 | -5.38  |  |

| WORST ONE-DAY % PERFORMERS |      |       |       |        |        |  |
|----------------------------|------|-------|-------|--------|--------|--|
|                            | CODE | CLOSE | 1D%   | 5D%    | YTD%   |  |
| African Rainbow Cap Inv    | AIL  | 417   | -8.55 | -16.10 | -14.72 |  |
| Metair Investments Ltd     | MTA  | 986   | -7.76 | -15.00 | -44.45 |  |
| Karoo Ltd                  | KRO  | 46610 | -6.78 | -7.70  | -1.87  |  |
| Brait PLC                  | BAT  | 155   | -6.06 | -9.88  | -14.84 |  |
| Cashbuild Ltd              | CSB  | 13700 | -4.86 | -2.14  | -17.93 |  |

DIVIDEND DATA

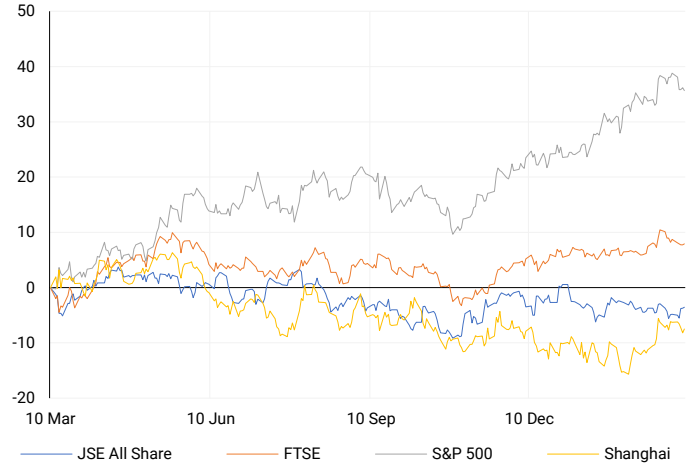
| COMPANY           | CODE | EXPECTED DIVIDEND | COMPANY                | CODE | EXPECTED DIVIDEND |
|-------------------|------|-------------------|------------------------|------|-------------------|
| Sasol             | SOL  | 200 ZARc          | City Lodge Hotels      | CLH  | 6 ZARc            |
| Gold Fields       | GFI  | 420 ZARc          | Adcock Ingram Holdings | AIP  | 125 ZARc          |
| Transpaco         | TPC  | 80 ZARc           | AngloGold Ashanti      | ANG  | 19 USDc           |
| Zeder Investments | ZED  | 20 ZARc           | NEPI Rockcastle N.V.   | NRP  | 25.6 EURc         |
| Kumba Iron Ore    | KIO  | 2420 ZARc         | Anglo American plc     | AGL  | 19 USDc           |

SOURCES | JSE, IRESS, MONEYWEB, CNBC, BBC, CNN

PLEASE SEE THE BOTTOM OF THE LAST PAGE FOR THE FULL DISCLAIMER

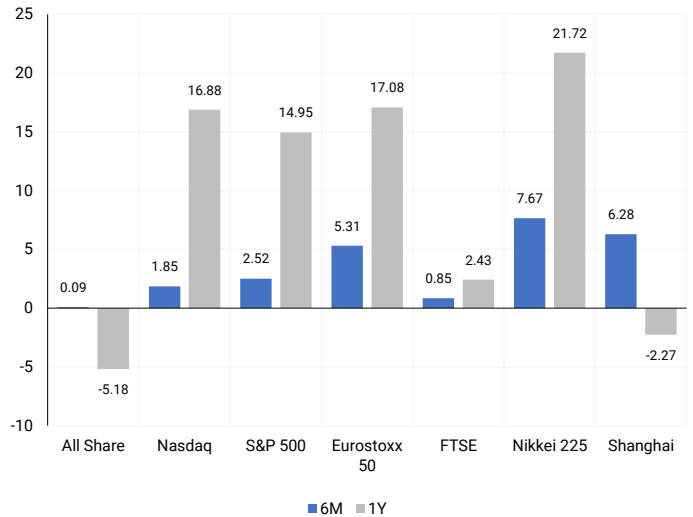
INTERNATIONAL INDICES

Normalised percentage performances - In rand terms



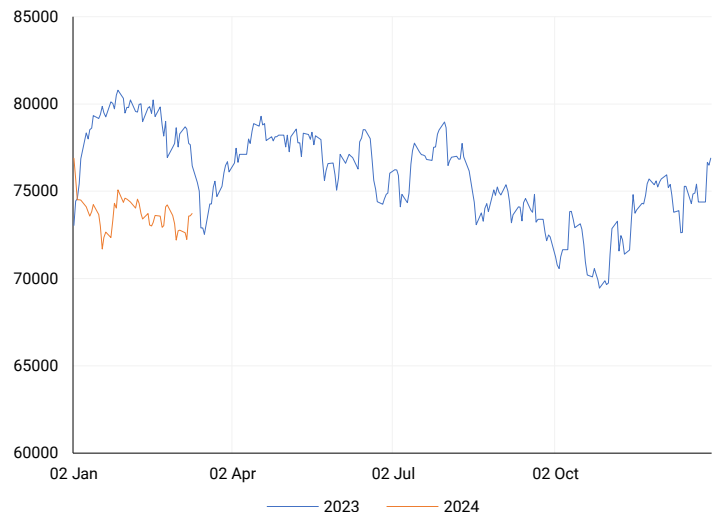
INTERNATIONAL INDICES

6-month & 1-year percentage performances



JSE ALL SHARE INDEX

2023 v 2024 to date



## LOCAL EQUITIES | JSE LARGE CAP COMPANIES (Cents Per Share)

| COMPANY                    | CLOSE  | PREVIOUS | 1D%   | 5D%   | 1M%    | YTD%   |
|----------------------------|--------|----------|-------|-------|--------|--------|
| Absa Group Limited         | 16679  | 16405    | 1.67  | 0.72  | 1.82   | 1.88   |
| Anglo American plc         | 44774  | 44339    | 0.98  | 7.40  | 7.53   | -5.44  |
| Anglo American Plat Ltd    | 75536  | 73147    | 3.27  | 3.28  | 5.16   | -21.64 |
| Anglogold Ashanti Ltd      | 41621  | 41956    | -0.80 | 15.53 | 24.25  | 17.77  |
| Anheuser-Busch InBev SA NV | 116045 | 114882   | 1.01  | 0.69  | -6.34  | -3.31  |
| BHP Group Limited          | 54121  | 54950    | -1.51 | -2.37 | -4.67  | -14.56 |
| BID Corporation Ltd        | 45711  | 45642    | 0.15  | 2.81  | 0.39   | 7.14   |
| British American Tob plc   | 54838  | 55150    | -0.57 | -3.11 | -7.46  | 1.27   |
| Compagnie Fin Richemont    | 307572 | 307686   | -0.04 | 0.61  | 7.24   | 19.79  |
| Capitec Bank Hldgs Ltd     | 210222 | 203500   | 3.30  | 2.52  | 3.15   | 3.74   |
| Discovery Ltd              | 13479  | 13413    | 0.49  | -0.16 | -1.78  | -6.19  |
| Firststrand Ltd            | 6424   | 6400     | 0.37  | -1.98 | -0.85  | -12.61 |
| Gold Fields Ltd            | 28750  | 28815    | -0.23 | 14.16 | 9.46   | 3.50   |
| Glencore plc               | 9710   | 9546     | 1.72  | 6.17  | 2.22   | -13.03 |
| Impala Platinum Hlgs Ltd   | 6939   | 6554     | 5.87  | 7.56  | 2.77   | -23.97 |
| Kumba Iron Ore Ltd         | 52693  | 53919    | -2.27 | -1.42 | -3.52  | -14.29 |
| Mondi plc                  | 32499  | 33050    | -1.67 | -4.22 | 0.91   | -10.47 |
| MTN Group Ltd              | 8341   | 8592     | -2.92 | -0.77 | -10.47 | -27.78 |
| Naspers Ltd -N-            | 297089 | 297264   | -0.06 | -4.82 | -12.02 | -5.02  |
| Prosus N.V.                | 54070  | 54169    | -0.18 | -3.02 | -9.88  | -3.51  |
| South32 Limited            | 3681   | 3700     | -0.51 | -1.63 | -6.19  | -12.75 |
| Standard Bank Group Ltd    | 19733  | 20022    | -1.44 | -4.95 | 0.06   | -5.18  |
| Shoprite Holdings Ltd      | 26666  | 26655    | 0.04  | 2.90  | 1.29   | -3.05  |
| Sanlam Limited             | 7372   | 7200     | 2.39  | -0.82 | 1.96   | 1.26   |
| Sasol Limited              | 14700  | 14765    | -0.44 | 0.42  | -3.61  | -20.66 |
| Sibanye Stillwater Ltd     | 2129   | 2048     | 3.96  | 8.29  | 4.06   | -14.50 |
| Vodacom Group Ltd          | 9303   | 9559     | -2.68 | -1.26 | -1.11  | -12.24 |

## SOUTH AFRICAN MARKET SUMMARY

### SELECTED ITEMS

The Top-40 index ended 0.23% higher on Friday, despite South Africa facing negative economic indicators last week, including a widening current account deficit and declining net foreign reserves in February. Public Enterprises Minister Pravin Gordhan announced his retirement after this year's May elections, amid ongoing challenges with state-owned enterprises like Eskom and Transnet, which have significantly impacted the country's economic growth. Additionally, African Rainbow Minerals (ARM) reported a 43% decrease in half-year profit, attributed to lower thermal coal and platinum group metal prices.

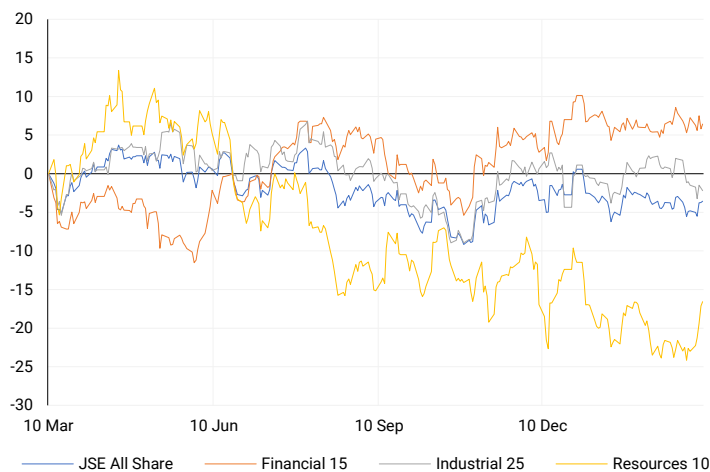
### JSE TOP 40

One-year



### LOCAL INDICES

Normalised percentage performances



### LOCAL SENS ANNOUNCEMENTS

#### SELECTED RELEASE

#### CAPITEC BANK HOLDINGS LIMITED – Voluntary Trading Statement

Capitec, in keeping with its commitment to shareholder transparency, has released its voluntary trading statement for the year ending on February 29, 2024. The board projects that group headline earnings per share will range from 9,049 cents to 9,208 cents per share, marking a 14% to 16% increase from the restated 7,938 cents per share reported for the previous year ending on February 28, 2023. Additionally, group earnings per share are anticipated to fall between 9,044 cents and 9,202 cents per share, showing a similar 14% to 16% growth compared to the restated 7,933 cents per share for the previous year.

CPI | 3.30% OPEN | 203736 HIGH | 213930c LOW | 203619c CLOSE | 210222c TIME | 14:10

#### AFRICAN RAINBOW MINERALS LIMITED – Interim Results

For the six months ending on December 31, 2023, headline earnings decreased by 43% to R2,955 million or R15.07 per share, compared to R5,172 million or R26.39 per share in the same period of the previous year, which has been restated. Despite this decrease, an interim dividend of R6.00 per share has been declared, lower than the R14.00 per share declared in the previous corresponding period. The company maintained a strong financial position with net cash of R7,935 million at the end of December 2023, compared to R9,779 million at the end of June 2023. Basic earnings for the period were R1,216 million or R6.20 per share, down from R4,388 million or R22.39 per share restated in the first half of the previous year. These earnings include attributable impairments of R1,739 million after tax, mainly due to reduced profitability resulting from lower platinum group metals commodity prices.

ARI | 3.31% OPEN | 18355c HIGH | 18978c LOW | 18312c CLOSE | 18925c TIME | 07:05

#### MPACT LIMITED – Summarised Consolidated Results

For the year ending on December 31, 2023, the company's performance saw several positive highlights: headline earnings per share increased by 8% to 512 cents compared to the previous year's 475 cents, while net asset value per share rose by 11.2% to R33.63 from R30.24 in 2022. The company generated a record amount of cash from operations, totalling R2.0 billion. Underlying operating profit also showed growth, up by 7% to R1.3 billion from R1.2 billion in 2022. Additionally, the total dividend per share for the year increased by 4% to 120 cents, up from 115 cents in 2022. The company's strategic projects remained on track, indicating positive momentum for future growth and development.

MPT | 0.25% OPEN | 2807c HIGH | 2850c LOW | 2807c CLOSE | 2808c TIME | 08:17

### EXPECTED COMPANY REPORTING SCHEDULE

| COMPANY       | CODE | RELEASE | DATE      |
|---------------|------|---------|-----------|
| ABSA          | ABG  | Final   | 11 Mar'24 |
| Old Mutual    | OMU  | Final   | 14 Mar'24 |
| Standard Bank | SBK  | Final   | 14 Mar'24 |
| Absa Bank     | ABSP | Final   | 15 Mar'24 |
| Thungela      | TGA  | Final   | 18 Mar'24 |

### BANK AND OTHER SELECTE PREFERENCE SHARES

| COMPANY          | CODE | CLOSE | CLEAN YIELD | NEXT LDT (Est.) |
|------------------|------|-------|-------------|-----------------|
| Investec Limited | INPR | 8650  | 10.69       | Thu, 06 Jun '24 |
| Standard Bank    | SBPP | 8825  | 11.08       | Thu, 28 Mar '24 |
| Absa             | ABSP | 77000 | 11.18       | Thu, 18 Apr '24 |
| Capitec          | CPIP | 10200 | 10.15       | Thu, 14 Mar '24 |
| Steinhoff        | SHFF | 8621  | 12.21       | Thu, 18 Apr '24 |
| Grindrod         | GNDP | 9225  | 11.97       | Thu, 21 Mar '24 |
| Netcare          | NTCP | 8500  | 12.00       | Thu, 09 May '24 |
| Discovery        | DSBP | 10190 | 12.43       | Thu, 07 Mar '24 |
| Invicta          | IVTP | 9805  | 12.36       | Thu, 27 Jun '24 |

**LOCAL EQUITIES | JSE MID CAP COMPANIES** (Cents Per Share)

| COMPANY                    | CODE | CLOSE | PREVIOUS | 1D%   | 1M%    | YTD%   |
|----------------------------|------|-------|----------|-------|--------|--------|
| Aspen Pharmacare Hldgs Ltd | APN  | 20372 | 20000    | 1.86  | 5.03   | 0.11   |
| African Rainbow Min Ltd    | ARI  | 18925 | 18319    | 3.31  | 7.32   | -5.38  |
| AVI Ltd                    | AVI  | 9137  | 9000     | 1.52  | 4.66   | 11.33  |
| Barloworld Ltd             | BAW  | 6400  | 6477     | -1.19 | -15.61 | -18.99 |
| Bidvest Ltd                | BVT  | 25599 | 25862    | -1.02 | 13.13  | 1.47   |
| Bytes Technology Grp PLC   | BYI  | 13962 | 14000    | -0.27 | -10.41 | -2.51  |
| Capital&Counties Prop plc  | CCO  | 3103  | 3149     | -1.46 | -1.68  | -4.52  |
| Clicks Group Ltd           | CLS  | 30520 | 31000    | -1.55 | -0.05  | -6.30  |
| Dis-Chem Pharmacies Ltd    | DCP  | 3223  | 3220     | 0.09  | 5.15   | 5.02   |
| Distell Group Hldgs Ltd    | DGH  | 94.5  | 96       | -1.56 | 5.00   | 9.88   |
| Exxaro Resources Ltd       | EXX  | 18200 | 18297    | -0.53 | 2.09   | -10.99 |
| Fortress Real Est INV A    | FFA  | 18.67 | 18.78    | -0.59 | 0.81   | -98.65 |
| Fortress Real Est INV B    | FFB  | 1639  | 1649     | -0.61 | 6.22   | 130.85 |
| Growthpoint Prop Ltd       | GRT  | 1206  | 1200     | 0.50  | 1.26   | 3.25   |
| Harmony GM Co Ltd          | HAR  | 13342 | 13369    | -0.20 | 17.37  | 11.56  |
| Hammerson plc              | HMN  | 617   | 619      | -0.32 | -1.28  | -9.26  |
| Investec Ltd               | INL  | 12125 | 12054    | 0.59  | 1.17   | -3.46  |
| Investec plc               | INP  | 12163 | 12120    | 0.35  | 1.77   | -3.43  |
| Italtile Ltd               | ITE  | 1015  | 1001     | 1.40  | -4.25  | -9.38  |
| Life Healthc Grp Hldgs Ltd | LHC  | 1736  | 1766     | -1.70 | -2.14  | -5.50  |
| MultiChoice Group Ltd      | MCG  | 11214 | 11407    | -1.69 | 16.75  | 38.41  |
| Medclinic Int plc          | MEI  | 21.5  | 22       | -2.27 | 13.16  | -17.31 |
| Montauk Renewables Inc     | MKR  | 9277  | 9500     | -2.35 | -23.33 | -46.06 |
| Mr Price Group Ltd         | MRP  | 17739 | 17586    | 0.87  | 5.34   | 13.12  |
| Momentum Met Hldgs Ltd     | MTM  | 2042  | 2037     | 0.25  | -1.26  | -6.72  |
| Ninety One Plc             | N91  | 3987  | 3990     | -0.08 | -2.87  | -7.54  |
| Nedbank Group Ltd          | NED  | 22697 | 22360    | 1.51  | 4.80   | 4.97   |
| Northam Platinum Hldgs Ltd | NPH  | 10656 | 10240    | 4.06  | -5.30  | -24.12 |
| NEPI Rockcastle N.V.       | NRP  | 13455 | 13385    | 0.52  | 5.77   | 6.46   |
| Netcare Limited            | NTC  | 1270  | 1291     | -1.63 | -9.87  | -10.81 |
| Ninety One Limited         | NY1  | 3900  | 3909     | -0.23 | -4.13  | -9.24  |
| Old Mutual Limited         | OMU  | 1205  | 1203     | 0.17  | -0.50  | -7.73  |
| OUTsurance Group Ltd       | OUT  | 4078  | 4141     | -1.52 | -0.44  | -3.36  |
| Pick n Pay Stores Ltd      | PIK  | 1810  | 1860     | -2.69 | -28.74 | -22.22 |
| Pepkor Holdings Ltd        | PPH  | 1936  | 1910     | 1.36  | -0.51  | -1.38  |
| Quilter Plc                | QLT  | 2321  | 2340     | -0.81 | -5.42  | -4.41  |
| Redefine Properties Ltd    | RDF  | 406   | 401      | 1.25  | -1.46  | 5.45   |
| Remgro Ltd                 | REM  | 14995 | 15031    | -0.24 | -3.21  | -7.71  |
| Resilient REIT Limited     | RES  | 4688  | 4729     | -0.87 | 0.45   | 5.85   |
| Reinet Investments S.C.A   | RNI  | 46957 | 47625    | -1.40 | 1.42   | 0.72   |
| Sappi Ltd                  | SAP  | 4622  | 4729     | -2.26 | 7.49   | 4.57   |
| Santam Limited             | SNT  | 30186 | 30417    | -0.76 | 2.04   | 5.34   |
| The Spar Group Ltd         | SPP  | 9078  | 9350     | -2.91 | -20.02 | -23.00 |
| Sirius Real Estate Ltd     | SRE  | 2181  | 2148     | 1.54  | 5.11   | -1.53  |
| Tiger Brands Ltd           | TBS  | 21060 | 20849    | 1.01  | 0.72   | 4.63   |
| Transaction Capital Ltd    | TCP  | 1000  | 996      | 0.40  | 28.70  | 25.31  |
| The Foschini Group Limited | TFG  | 10888 | 10813    | 0.69  | -3.22  | -1.87  |
| Thungela Resources Ltd     | TGA  | 11243 | 11350    | -0.94 | -5.12  | -26.90 |
| Telkom SA SOC Ltd          | TKG  | 2650  | 2773     | -4.44 | -4.02  | -10.89 |
| Truworths Int Ltd          | TRU  | 8300  | 8021     | 3.48  | 8.82   | 11.63  |
| Textainer Group Hldgs Ltd  | TXT  | 94600 | 93250    | 1.45  | 1.15   | 2.72   |
| Woolworths Holdings Ltd    | WHL  | 6374  | 6351     | 0.36  | -5.29  | -11.72 |
| Zeda Limited               | ZZD  | 1155  | 1162     | -0.60 | -5.79  | -9.41  |

**LOCAL EQUITIES | JSE SMALL CAP COMPANIES** (Cents Per Share)

| COMPANY                    | CODE | CLOSE | PREVIOUS | 1D%   | 1M%    | YTD%   |
|----------------------------|------|-------|----------|-------|--------|--------|
| ArcelorMittal SA Limited   | ACL  | 125   | 130      | -3.85 | 4.17   | -23.78 |
| ADVTECH Ltd                | ADH  | 2870  | 2861     | 0.31  | 6.89   | 16.95  |
| Altron Limited A           | AEL  | 1145  | 1100     | 4.09  | 21.81  | 11.71  |
| AECI Limited               | AFE  | 9450  | 9450     | 0.00  | -3.24  | -13.85 |
| Alexander Forbes Grp Hldgs | AFH  | 626   | 641      | -2.34 | -3.69  | -5.15  |
| Afrimat Limited            | AFT  | 5978  | 5955     | 0.39  | -1.90  | -5.11  |
| African Rainbow Cap Inv    | AIL  | 417   | 456      | -8.55 | -15.07 | -14.72 |
| Adcock Ingram Hldgs Ltd    | AIP  | 5547  | 5500     | 0.85  | 2.59   | -7.70  |
| Astral Foods Ltd           | ARL  | 14580 | 14422    | 1.10  | -6.54  | -0.53  |
| Attacq Limited             | ATT  | 955   | 966      | -1.14 | -2.85  | 3.58   |
| Brait PLC                  | BAT  | 155   | 165      | -6.06 | -13.89 | -14.84 |
| Blue Label Telecoms Ltd    | BLU  | 362   | 364      | -0.55 | 4.62   | -6.70  |
| Coronation Fund Mngrs Ld   | CML  | 3120  | 3113     | 0.22  | 0.00   | 0.13   |
| Curro Holdings Limited     | COH  | 1093  | 1135     | -3.70 | -6.90  | -6.18  |
| Cashbuild Ltd              | CSB  | 13700 | 14400    | -4.86 | -9.87  | -17.93 |
| DRD Gold Ltd               | DRD  | 1509  | 1500     | 0.60  | 3.85   | -4.31  |
| Datatec Ltd                | DTC  | 3900  | 4000     | -2.50 | -3.70  | -3.70  |
| Emira Property Fund Ltd    | EMI  | 868   | 880      | -1.36 | -5.65  | 1.52   |
| Equites Prop Fund Ltd      | EQU  | 1254  | 1257     | -0.24 | -10.17 | -10.11 |
| Famous Brands Ltd          | FBR  | 5361  | 5487     | -2.30 | -4.83  | -7.46  |
| Fairvest Limited B         | FTB  | 368   | 372      | -1.08 | -0.27  | 6.98   |
| Grindrod Ltd               | GND  | 1296  | 1275     | 1.65  | 9.83   | 13.09  |
| Hosken Cons Inv Ltd        | HCI  | 16868 | 16998    | -0.76 | -4.70  | -16.74 |
| Hudaco Industries Ltd      | HDC  | 16299 | 16300    | -0.01 | -0.68  | 1.47   |
| Hyprop Inv Ltd             | HYP  | 3246  | 3225     | 0.65  | -1.79  | 4.34   |
| Investec Property Fund Ltd | IPF  | 775   | 779      | -0.51 | -7.52  | -3.13  |
| JSE Ltd                    | JSE  | 8842  | 8732     | 1.26  | 2.16   | -4.35  |
| KAP Industrial Hldgs Ltd   | KAP  | 265   | 266      | -0.38 | 20.45  | 1.15   |
| Karooooo Ltd               | KRO  | 46610 | 49999    | -6.78 | -2.90  | -1.87  |
| PSG Konsult Limited        | KST  | 1438  | 1495     | -3.81 | -4.20  | -6.32  |
| Libstar Holdings Ltd       | LBR  | 339   | 350      | -3.14 | -0.29  | -3.14  |
| Lighthouse Properties plc  | LTE  | 795   | 785      | 1.27  | 1.53   | 8.16   |
| Industrials REIT Limited   | MLI  | 0.6   | 0.6      | 0.00  | 0.00   | -14.29 |
| MAS P.L.C                  | MSP  | 1617  | 1609     | 0.50  | -9.06  | -6.59  |
| Metair Investments Ltd     | MTA  | 986   | 1069     | -7.76 | -27.50 | -44.45 |
| Motus Holdings Ltd         | MTH  | 9200  | 9300     | -1.08 | -7.94  | -9.36  |
| Murray & Roberts Hldgs     | MUR  | 130   | 125      | 4.00  | 8.33   | -12.75 |
| Oceana Group Ltd           | OCE  | 6950  | 7210     | -3.61 | -2.57  | -1.66  |
| Omnia Holdings Ltd         | OMN  | 6175  | 6200     | -0.40 | -1.86  | -5.54  |
| Pan African Resource plc   | PAN  | 513   | 509      | 0.79  | 22.14  | 25.43  |
| PPC Limited                | PPC  | 355   | 356      | -0.28 | -5.84  | -11.03 |
| Raubex Group Ltd           | RBX  | 2900  | 2902     | -0.07 | 1.75   | 4.62   |
| RFG Holdings Limited       | RFG  | 1360  | 1360     | 0.00  | 3.03   | 0.74   |
| Reunert Ltd                | RLO  | 6568  | 6531     | 0.57  | 6.42   | 9.58   |
| SA Corp Real Estate Ltd    | SAC  | 254   | 252      | 0.79  | -2.31  | 9.48   |
| Super Group Ltd            | SPG  | 2641  | 2635     | 0.23  | -6.58  | -11.23 |
| Stor-Age Prop REIT Ltd     | SSS  | 1410  | 1397     | 0.93  | -0.70  | 7.96   |
| Southern Sun LTD           | SSU  | 510   | 525      | -2.86 | -2.86  | -2.86  |
| Sun International Ltd      | SUI  | 3975  | 3930     | 1.15  | -3.03  | -3.05  |
| Tharisa plc                | THA  | 1250  | 1234     | 1.30  | -11.97 | -17.27 |
| Tsogo Sun Gaming Ltd       | TSG  | 1109  | 1093     | 1.46  | -3.23  | -9.47  |
| Vukile Property Fund Ltd   | VKE  | 1554  | 1550     | 0.26  | 1.04   | 10.06  |
| Wilson Bayly Hlm-Ovc Ltd   | WBO  | 13942 | 13624    | 2.33  | 5.58   | 7.20   |

**10-YEAR BOND YIELD | SELECTED ITEMS** (Basis Point Change)

| REGION            | YIELD  | 1D | 1M  | 1Y  |
|-------------------|--------|----|-----|-----|
| United States     | 4.07%  | -2 | -11 | --  |
| United Kingdom    | 3.97%  | -2 | -11 | 34  |
| Germany           | 2.26%  | -4 | -11 | -24 |
| Japan             | 0.74%  | 2  | 3   | --  |
| South African 10Y | 10.11% | 5  | 16  | -9  |

**SOUTH AFRICAN 10-YEAR**

2023 vs 2024 to date

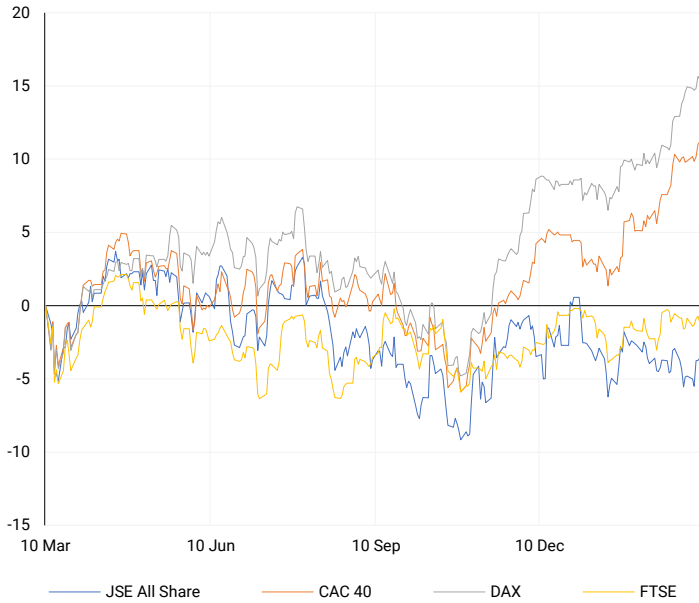


**GLOBAL INTEREST RATES | SELECTED ITEMS**

| REGION         | DATE CHANGED    | CURRENT RATE |
|----------------|-----------------|--------------|
| United States  | Wed, 26 Jul '23 | 5.25%-5.50%  |
| United Kingdom | Thu, 03 Aug '23 | 5.25%        |
| European       | Thu, 27 Jul '23 | 4.25%        |
| SA Repo Rate   | Thu, 25 May '23 | 8.25%        |
| SA Prime Rate  | Thu, 25 May '23 | 11.75%       |

## EUROPEAN INDICES

Normalised percentage performances



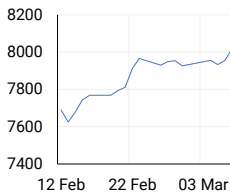
## EUROPEAN MARKET SUMMARY

### SELECTED ITEMS

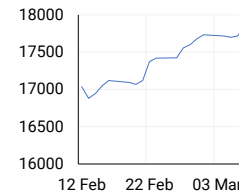
Europe's main stock indices remained flat on Friday despite strong gains throughout the week, marked by record highs in German and French shares. The pan-European STOXX 600 closed unchanged, achieving an all-time high and its seventh consecutive weekly advance. France's CAC 40 reached a record high, while Germany's DAX had touched an all-time high in the previous session. Real estate stocks led sectoral gains with a 2.1% increase, while the technology sector experienced a 1.6% decline, attributed to BE Semiconductor's 16.1% slump.

| EUROPEAN INDICES | CLOSE    | PREVIOUS | 1D%   | 5D%   | 1M%  | YTD%  |
|------------------|----------|----------|-------|-------|------|-------|
| CAC 40           | 8028.01  | 8016.22  | 0.15  | 1.18  | 4.73 | 6.43  |
| DAX 30           | 17814.51 | 17842.85 | -0.16 | 0.45  | 5.01 | 6.34  |
| Eurostoxx 50     | 4961.11  | 4974.22  | -0.26 | 1.35  | 5.31 | 9.72  |
| FTSE             | 7659.74  | 7692.46  | -0.43 | -0.30 | 0.85 | -0.95 |

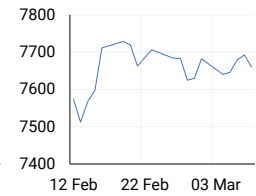
### CAC 40



### DAX

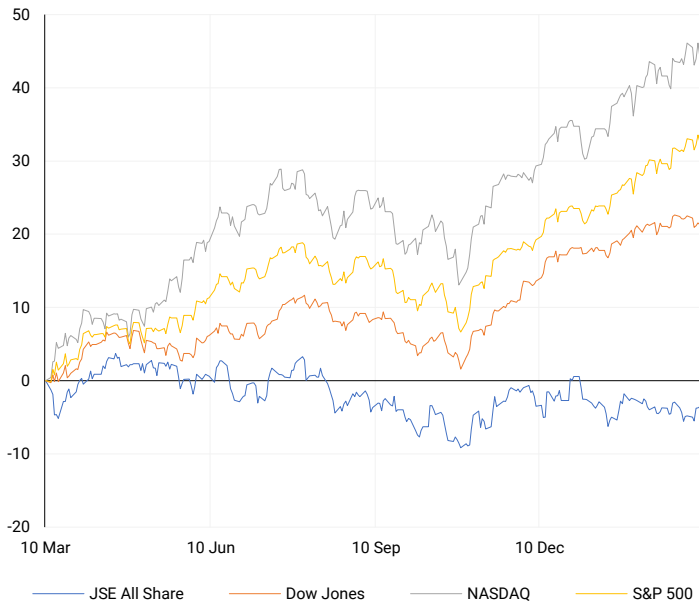


### FTSE



## AMERICAN INDICES

Normalised percentage performances



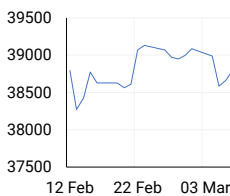
## AMERICAN MARKET SUMMARY

### SELECTED ITEMS

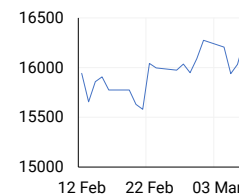
US stocks experienced a decline on Friday, concluding a turbulent week influenced by a pause in Nvidia's impressive performance. Despite this, Nvidia shares still gained over 6% throughout the week, contributing to a remarkable rally that added over \$1 trillion to the stock's market cap in the new year alone. The February jobs data, released on Friday, presented mixed signals on the timing of potential interest rate cuts by the Federal Reserve. Unexpectedly, the unemployment rate increased to 3.9%, and wage growth was lighter than anticipated, providing some optimism that inflation may have eased enough to satisfy the Fed. Additionally, data on January's job growth was revised downward.

| AMERICAN INDICES | CLOSE    | PREVIOUS | 1D%   | 5D%   | 1M%   | YTD%  |
|------------------|----------|----------|-------|-------|-------|-------|
| Dow Jones        | 38722.69 | 38791.35 | -0.18 | -0.93 | -0.01 | 2.74  |
| Nasdaq           | 16085.11 | 16273.38 | -1.16 | -1.17 | 1.85  | 7.15  |
| S&P 500          | 5123.69  | 5157.36  | -0.65 | -0.26 | 2.52  | 7.42  |
| US VIX           | 14.74    | 14.44    | 2.08  | 12.43 | 15.25 | 18.39 |

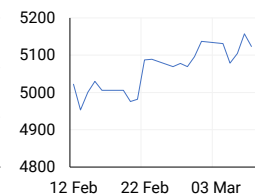
### DOW JONES



### NASDAQ

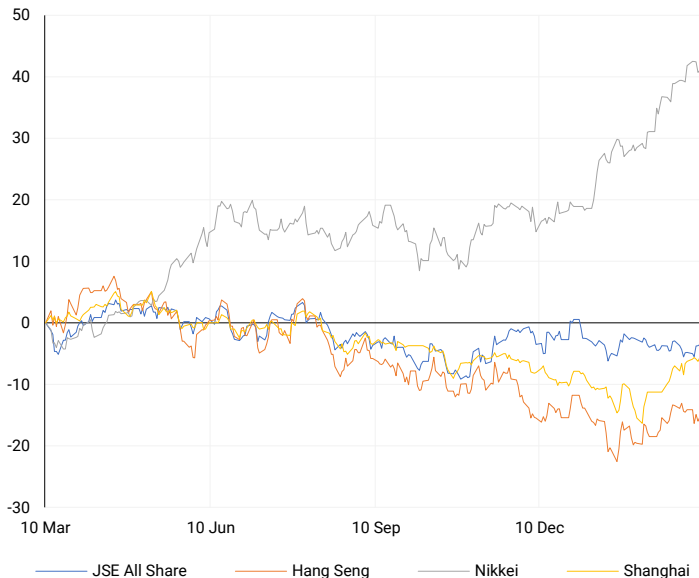


### S&P 500



## ASIAN INDICES

Normalised percentage performances



## ASIAN MARKET SUMMARY

### SELECTED ITEMS

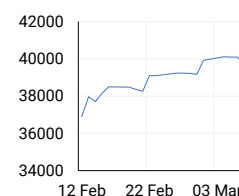
Asian share markets experienced a sluggish start this morning, with the yen strengthening as Reuters reported an increasing number of Bank of Japan policymakers considering ending negative interest rates this month, anticipating significant pay raises in annual wage negotiations. Despite earlier concerns, Japan's economy was revised upward to a 0.4% annualized growth for the December quarter, indicating it is not in recession. Chinese inflation data for February showed a modest increase to 0.7%, while producer prices remained in deflation.

| ASIAN INDICES | CLOSE    | PREVIOUS | 1D%  | 5D%   | 1M%  | YTD%  |
|---------------|----------|----------|------|-------|------|-------|
| Hang Seng     | 16353.39 | 16229.78 | 0.76 | -1.42 | 2.99 | -4.07 |
| Nikkei 225    | 39688.94 | 39598.71 | 0.23 | -0.56 | 7.67 | 18.60 |
| Shanghai      | 3046.02  | 3027.40  | 0.61 | 0.63  | 6.28 | 2.39  |

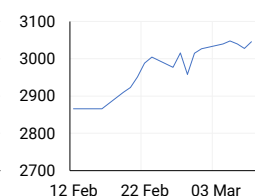
### HANG SENG



### NIKKEI



### SHANGHAI



## COMMODITIES MARKET SUMMARY

### SELECTED ITEMS

Gold prices paused their record-breaking rally this morning, influenced by a cooling U.S. labor market and Federal Reserve statements, as traders anticipated an inflation report for insights into the potential timing of rate cuts. Meanwhile, oil prices continued last week's decline due to worries about sluggish demand in China. However, persistent geopolitical risks related to the Middle East and Russia restrained the extent of the decrease.

| COMMODITY   | LAST    | CLOSE   | % CHG | 1D%   | 5D%   | YTD%  |
|-------------|---------|---------|-------|-------|-------|-------|
| Brent Crude | 81.53   | 81.91   | -0.46 | -1.60 | -1.77 | 6.27  |
| Gold        | 2181.31 | 2179.11 | 0.10  | 0.90  | 4.61  | 5.63  |
| Palladium   | 1019.85 | 1019.75 | 0.01  | -1.50 | 7.09  | -7.06 |
| Platinum    | 911.53  | 912.70  | -0.13 | -0.73 | 2.91  | -7.55 |
| Silver      | 24.31   | 24.31   | -0.03 | -0.06 | 5.04  | 2.21  |

## BRENT CRUDE

One-year



## PLATINUM

One-year



## GOLD

One-year



| CURRENCY PAIR | LAST   | CLOSE  | % CHG | 1D%   | 5D%   | YTD%  |
|---------------|--------|--------|-------|-------|-------|-------|
| USDZAR        | 18.78  | 18.73  | 0.25  | 0.26  | -2.03 | 2.20  |
| GBPZAR        | 24.13  | 24.07  | 0.27  | 0.59  | -0.47 | 3.31  |
| EURZAR        | 20.54  | 20.48  | 0.31  | 0.12  | -1.19 | 1.42  |
| AUDZAR        | 12.41  | 12.40  | 0.10  | 0.29  | -0.63 | -0.44 |
| EURUSD        | 1.09   | 1.09   | -0.01 | -0.07 | 0.92  | -0.88 |
| USDJPY        | 146.93 | 147.07 | -0.09 | -0.67 | -2.04 | 4.27  |
| GBPUSD        | 1.29   | 1.29   | -0.05 | 0.39  | 1.61  | 1.00  |
| USDCHF        | 0.88   | 0.88   | -0.01 | 0.01  | -0.63 | 4.31  |

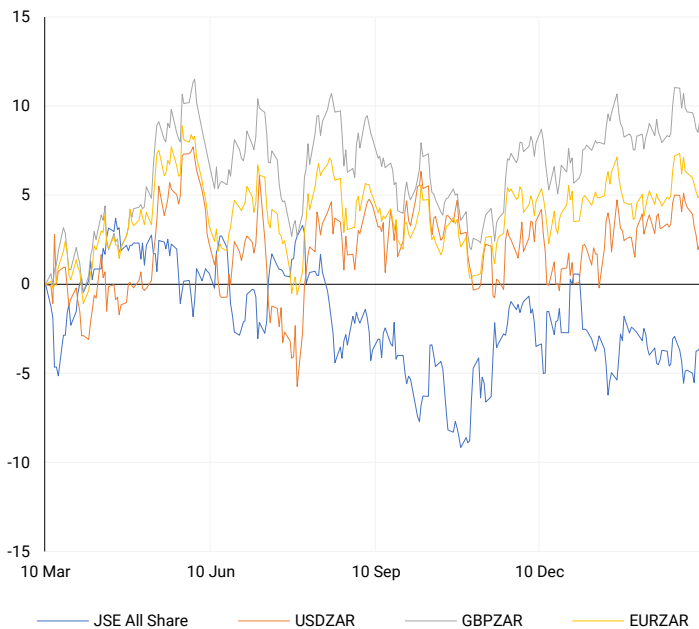
## CURRENCY MARKET SUMMARY

### SELECTED ITEMS

Last Friday, South Africa's rand reached its highest level in over a month, propelled by a week of increases attributed to the significant surge in gold prices. On Monday, the yen gained strength against the dollar, fuelled by indications that the Bank of Japan might abandon negative interest rates at its upcoming policy meeting, diverging from expectations of a rate cut by the Federal Reserve in June. Sources revealed that an increasing number of Bank of Japan policymakers are considering ending negative rates at their March 18-19 gathering, according to information obtained by Reuters.

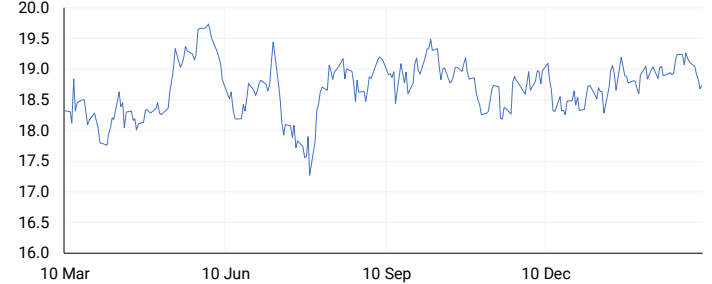
## CURRENCY PAIRS vs JSE ALL SHARE

Normalised percentage performances



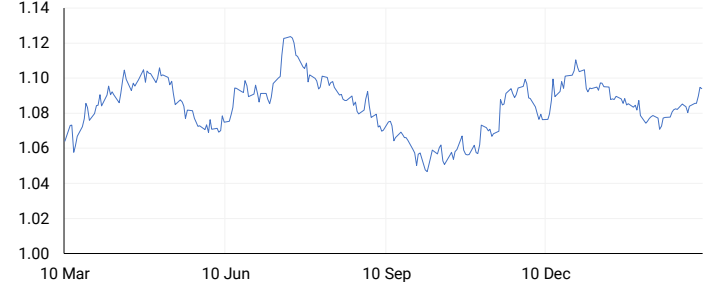
## USDZAR

One-year



## EURUSD

One-year



SOURCES | JSE, IRESS, MONEYWEB, CNBC, BBC, CNN

**Disclaimer:** This note is prepared for Sanlam Private Wealth (Pty) Ltd, by K2013143132 (Pty) Ltd trading as ThompsonGreen. ThompsonGreen is an independent company contracted to Sanlam Private Wealth (Pty) Ltd. The views expressed in this note are those of ThompsonGreen and/or its analysts and not necessarily the views of Sanlam Private Wealth (Pty) Ltd, Sanlam or any officer or agent thereof. K2013143132 (Pty) Ltd trading as ThompsonGreen is a research house and not a registered broker, financial adviser or financial service provider. Our editors and customer services teams also do not give personal investment advice. The information in this document is general advice only and may not be appropriate to your particular investment objectives, financial situation or particular needs. Before investing, or if you are in any doubt about your personal situation, you should seek professional advice from a stockbroker or independent financial adviser authorised by the Financial Sector Conduct Authority.