

GLOBAL OVERVIEW | SELECTED INDICES

SOUTH AFRICAN INDICES	CLOSE	PREVIOUS	1D%	5D%	1M%	YTD%
All Share	74258.63	73484.56	1.05	0.92	1.64	-3.43
Top 40	67954.70	67181.43	1.15	1.24	2.20	-3.60
Financial 15	17208.57	17157.08	0.30	-1.37	1.25	-3.72
Industrial 25	101942.71	101245.47	0.69	0.90	-1.80	-1.71
Resource 10	54818.56	53361.86	2.73	4.66	10.14	-4.72
Mid Cap	78554.00	77409.57	1.48	1.72	4.03	-2.31
Small Cap	71369.23	71013.45	0.50	-1.22	-1.46	-1.55
Banks	10440.68	10404.64	0.35	-1.23	1.50	-4.64
Retailers	6097.42	6060.57	0.61	0.33	-0.13	-2.18
Property (J253) - TR	1956.80	1949.09	0.40	-0.37	1.49	5.00

AMERICAN INDICES	CLOSE	PREVIOUS	1D%	5D%	1M%	YTD%
Dow Jones	39043.32	39005.49	0.10	0.99	2.01	3.59
Nasdaq	16177.77	16265.64	-0.54	0.91	3.34	7.77
S&P 500	5165.31	5175.27	-0.19	1.19	4.28	8.29
US VIX	13.75	13.84	-0.65	-5.17	-13.25	10.44

EUROPEAN INDICES	CLOSE	PREVIOUS	1D%	5D%	1M%	YTD%
CAC 40	8137.58	8087.48	0.62	2.30	6.72	7.88
DAX 30	17961.38	17965.11	-0.02	1.38	6.40	7.22
Eurostoxx 50	5000.55	4983.20	0.35	1.73	6.64	10.59
FTSE	7772.17	7747.81	0.31	1.21	3.46	0.50

ASIAN INDICES	CLOSE	PREVIOUS	1D%	5D%	1M%	YTD%
Hang Seng	17082.11	17093.50	-0.07	3.92	8.48	0.20
Nikkei 225	38695.97	38797.51	-0.26	-3.48	1.93	15.63
Shanghai	3043.83	3055.94	-0.40	0.13	6.21	2.32

EARLY MORNING MARKETS	LAST	CLOSE	% CHG	1D%	5D%	YTD%
TENCENT	288.80	290.60	-0.62	-0.07	5.83	-1.02
BHP AUS	4303.00	4195.00	2.57	-1.34	-4.35	-16.78

NOTE: 5D% and 1M% are rolling percentage moves

INTERNATIONAL ECONOMIC CALENDAR | SELECTED EVENTS

TIME	AREA	TODAY'S EVENTS & RELEASES	PERIOD	EXP.	PREV.
11:30	ZA	Gold Production y/y	Jan	2.50%	-3.40%
11:30	ZA	Mining Production y/y	Jan	0.40%	0.60%
13:00	ZA	Manufacturing Production y/y	Jan	0.90%	0.70%
14:30	US	PPI m/m	Feb	0.30%	0.30%
---	---	---	---	---	---

TIME	AREA	PREVIOUS SESSION'S RELEASES	PERIOD	EXP.	ACT.
9:00	GB	GDP m/m	Jan	0.10%	0.20%
16:30	US	EIA Crude Oil Stocks Change	Mar	---	-1.536M
19:00	US	30-Year Bond Auction	---	---	4.33%
---	---	---	---	---	---
---	---	---	---	---	---

JSE ALL SHARE | BEST AND WORST ONE-DAY PERFORMERS

BEST ONE-DAY % PERFORMERS	CODE	CLOSE	1D%	5D%	YTD%
Northam Platinum Hldgs Ltd	NPH	11529	10.00	16.57	-17.90
Impala Platinum Hlgs Ltd	IMP	7632	9.97	24.69	-16.38
Anglo American Plat Ltd	AMS	79710	7.45	12.43	-17.31
Sibanye Stillwater Ltd	SSW	2166	5.15	10.91	-13.01
Metair Investments Ltd	MTA	1185	4.87	6.37	-33.24
Raubex Group Ltd	RBX	2958	4.52	6.79	6.71

WORST ONE-DAY % PERFORMERS	CODE	CLOSE	1D%	5D%	YTD%
Kumba Iron Ore Ltd	KIO	45484	-7.74	-15.26	-26.02
Brait PLC	BAT	116	-5.69	-30.12	-36.26
NEPI Rockcastle N.V.	NRP	13000	-3.49	-4.85	2.86
Adcock Ingram Hldgs Ltd	AIP	5376	-2.70	-2.78	-10.55
Montauk Renewables Inc	MKR	8361	-2.21	-16.47	-51.39

DIVIDEND DATA

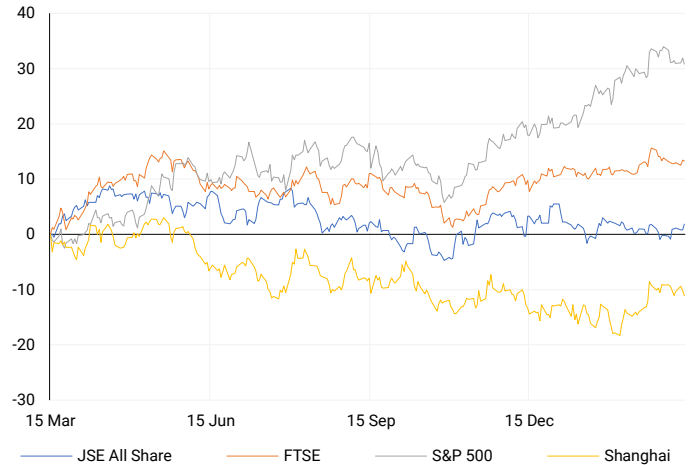
COMPANY	CODE	EXPECTED DIVIDEND	COMPANY	CODE	EXPECTED DIVIDEND
Bid Corp	BID	525 ZARc	Spur	SUR	95 ZARc
Bowler Metcalf	BCF	24 ZARc	Truworths	TRU	332 ZARc
Cashbuild	CSB	325 ZARc	---	---	---
Northam Platinum	NPH	100 ZARc	---	---	---
Santam	SNT	905 ZARc	---	---	---

SOURCES | JSE, IRESS, MONEYWEB, CNBC, BBC, CNN

PLEASE SEE THE BOTTOM OF THE LAST PAGE FOR THE FULL DISCLAIMER

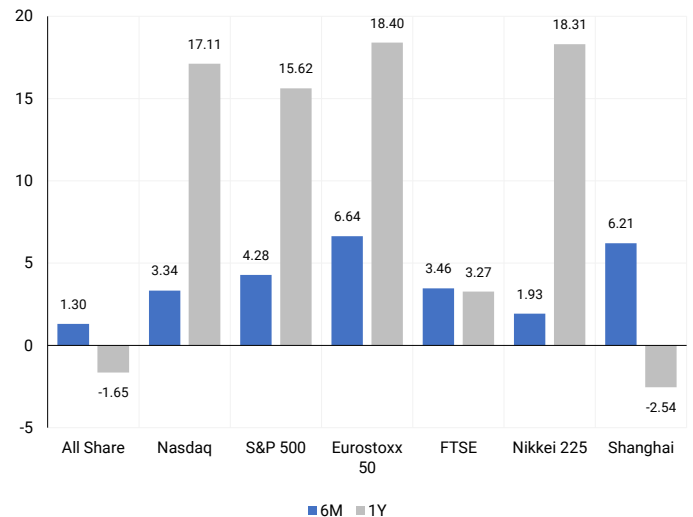
INTERNATIONAL INDICES

Normalised percentage performances - In rand terms



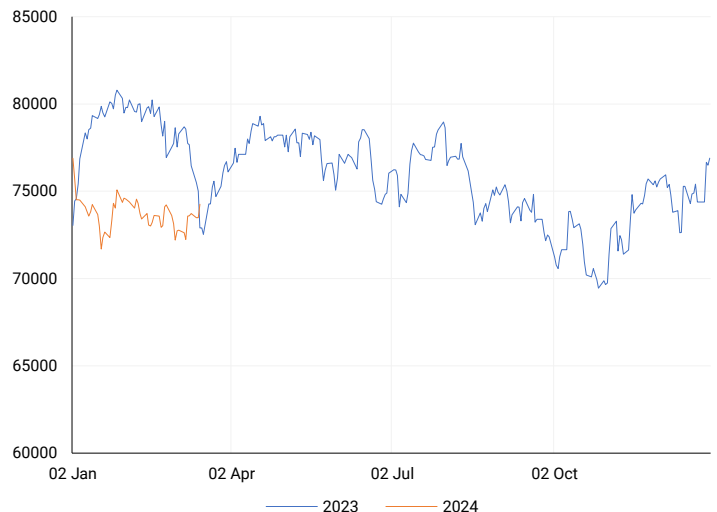
INTERNATIONAL INDICES

6-month & 1-year percentage performances



JSE ALL SHARE INDEX

2023 v 2024 to date



Last date to trade Mon, 18 March

LOCAL EQUITIES | JSE LARGE CAP COMPANIES (Cents Per Share)

COMPANY	CLOSE	PREVIOUS	1D%	5D%	1M%	YTD%
Absa Group Limited	15313	15396	-0.54	-8.09	-5.07	-6.46
Anglo American plc	44986	44280	1.59	5.66	7.86	-4.99
Anglo American Plat Ltd	79710	74185	7.45	12.43	13.23	-17.31
Anglogold Ashanti Ltd	42436	40907	3.74	3.70	30.57	20.08
Anheuser-Busch InBev SA NV	119380	118246	0.96	3.52	-1.93	-0.53
BHP Group Limited	52490	52828	-0.64	-3.55	-7.43	-17.13
BID Corporation Ltd	45499	44900	1.33	-1.05	1.93	6.64
British American Tob plc	56992	56542	0.80	2.60	-1.47	5.25
Compagnie Fin Richemont	312063	309223	0.92	3.25	9.35	21.54
Capitec Bank Hldgs Ltd	212144	211387	0.36	2.55	6.07	4.69
Discovery Ltd	13650	13575	0.55	0.25	1.25	-5.00
Firststrand Ltd	6488	6395	1.45	-1.74	1.41	-11.74
Gold Fields Ltd	28461	27720	2.67	-0.36	12.98	2.46
Glencore plc	9950	9575	3.92	5.93	5.73	-10.88
Impala Platinum Hlgs Ltd	7632	6940	9.97	24.69	18.97	-16.38
Kumba Iron Ore Ltd	45484	49301	-7.74	-15.26	-18.90	-26.02
Mondi plc	31393	31963	-1.78	-6.28	-3.10	-13.52
MTN Group Ltd	8447	8400	0.56	-1.98	-8.70	-26.87
Naspers Ltd -N-	308846	305983	0.94	2.94	-8.36	-1.26
Prosus N.V.	56813	56150	1.18	5.01	-5.47	1.38
South32 Limited	3579	3565	0.39	-2.16	-5.69	-15.17
Standard Bank Group Ltd	19970	19966	0.02	-1.03	0.31	-4.04
Shoprite Holdings Ltd	26512	26758	-0.92	-1.81	2.96	-3.61
Sanlam Limited	7237	7332	-1.30	-2.51	0.56	-0.59
Sasol Limited	14178	14059	0.85	-3.22	-3.71	-23.48
Sibanye Stillwater Ltd	2166	2060	5.15	10.91	10.29	-13.01
Vodacom Group Ltd	9371	9302	0.74	-4.74	1.20	-11.59

SOUTH AFRICAN MARKET SUMMARY

SELECTED ITEMS

The Top-40 index on the Johannesburg Stock Exchange rose by 1.15%. Although no significant South African economic data was released, mining and manufacturing production figures for January are expected later today, which could influence the local currency. Growthpoint Properties announced on Wednesday that it anticipates lower distributable income for the year due to high interest rates, especially impacting its businesses in the latter half of the year. Meanwhile TFG announced that it had entered into a franchise agreement to become the exclusive retail partner of British sportswear giant JD Sports Fashion in South Africa.

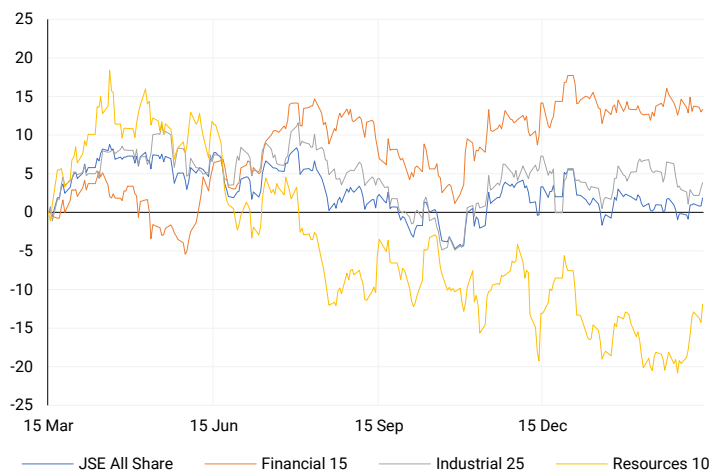
JSE TOP 40

One-year



LOCAL INDICES

Normalised percentage performances



EXPECTED COMPANY REPORTING SCHEDULE

COMPANY	CODE	RELEASE	DATE
Old Mutual	OMU	Final	14 Mar'24
Standard Bank	SBK	Final	14 Mar'24
Absa Bank	ABSP	Final	15 Mar'24
Thungela	TGA	Final	18 Mar'24
Sun International	SUI	Final	18 Mar'24

BANK AND OTHER SELECTE PREFERENCE SHARES

COMPANY	CODE	CLOSE	CLEAN YIELD	NEXT LDT (Est.)
Investec Limited	INPR	8676	10.69	Thu, 06 Jun '24
Standard Bank	SBPP	8651	11.08	Thu, 28 Mar '24
Absa	ABSP	77396	11.18	Thu, 18 Apr '24
Capitec	CPIP	9521	10.15	Thu, 14 Mar '24
Steinhoff	SHFF	8500	12.21	Thu, 18 Apr '24
Grindrod	GNDP	9109	11.97	Thu, 21 Mar '24
Netcare	NTCP	8600	12.00	Thu, 09 May '24
Discovery	DSBP	10260	12.43	Thu, 07 Mar '24
Invicta	IVTP	9800	12.36	Thu, 27 Jun '24

LOCAL SENS ANNOUNCEMENTS

SELECTED RELEASE

HYPROP INVESTMENTS LIMITED – Condensed Consolidated Interim Results

The financial figures for the periods ending December 2023 and December 2022, along with the audited results for June 2023, reveal notable fluctuations. Net operating income for December 2023 amounted to R 613,482, showing a decrease from R 665,323 in December 2022 and a significant decline from R 1,229,170 in June 2023. Headline earnings per share (cents) followed a similar trend, with December 2023 at 111.3, December 2022 at 226.1, and June 2023 at 393.9. Basic earnings per share (cents) also exhibited a downward trajectory, with December 2023 at 52.1, December 2022 at 209.0, and June 2023 at 431.9. However, distributable income per share (cents) for December 2023 slightly surpassed that of December 2022, standing at 176.1 compared to 203.4, yet it fell short of June 2023's 405.2. Finally, the net asset value per share (Rands) showed a decline, with December 2023 at 58.77, December 2022 at 59.47, and June 2023 at 63.39.

HYP | 0.16% OPEN | 3101c HIGH | 3121c LOW | 3085c CLOSE | 3110c TIME | 17:00

MOMENTUM METROPOLITAN HOLDINGS LIMITED – Voluntary Trading Statement

The restated financial figures for the first half of 2024 (1HF2024) compared to 1HF2023 under IFRS 4 standards show notable changes. Earnings per share for 1HF2024 are projected to be in the range of 156 to 163 cents, reflecting an increase of 8% to 13% from the restated figure of 144.5 cents for 1HF2023. Headline earnings per share for the same period are anticipated to be between 158 to 163 cents, marking a significant rise of 46% to 51% from the restated 1HF2023 figure of 108.0 cents. Additionally, normalised headline earnings per share for 1HF2024 are forecasted to range from 165 to 171 cents, indicating an increase of 45% to 50% from the restated 1HF2023 figure of 113.7 cents.

MTM | 3.97% OPEN | 2016c HIGH | 2121c LOW | 2016c CLOSE | 2120c TIME | 15:00

GROWTHPOINT PROPERTIES LIMITED – Group Unaudited Interim Results

Key highlights of the group's performance include improved key performance indicators across all three South African sectors. The V&A Waterfront particularly stood out with distributable income increasing by 13.7% to R380.7 million compared to the previous period. The group demonstrated access to liquidity by issuing R2.8 billion in new bonds during the period, with an additional R1.0 billion post the period. In line with environmental, social, and governance (ESG) objectives, the group secured a significant Power Purchase Agreement with Etana Energy for renewable energy, representing 32.0% of total current annual electricity consumption. However, distributable income was negatively impacted by high interest rates, with total cost of funding increasing by 16.9%. Net asset value per share decreased by 3.9%, while both distributable income per share and dividend per share saw an 8.6% decrease compared to the previous period.

GRT | 0.00% OPEN | 1165c HIGH | 1174c LOW | 1151c CLOSE | 1173c TIME | 08:30

LOCAL EQUITIES | JSE MID CAP COMPANIES (Cents Per Share)

COMPANY	CODE	CLOSE	PREVIOUS	1D%	1M%	YTD%
Aspen Pharmacare Hldgs Ltd	APN	21192	20722	2.27	10.96	4.14
African Rainbow Min Ltd	ARI	18472	18342	0.71	6.16	-7.64
AVI Ltd	AVI	9151	9114	0.41	5.33	11.50
Barloworld Ltd	BAW	6279	6282	-0.05	-15.57	-20.52
Bidvest Ltd	BVT	25503	25207	1.17	10.25	1.09
Bytes Technology Grp PLC	BYI	13606	13732	-0.92	-11.99	-4.99
Capital&Counties Prop plc	CCO	3150	3162	-0.38	-0.13	-3.08
Clicks Group Ltd	CLS	31095	30846	0.81	5.29	-4.53
Dis-Chem Pharmacies Ltd	DCP	3242	3234	0.25	11.49	5.64
Distell Group Hldgs Ltd	DGH	94	94	0.00	4.44	9.30
Exxaro Resources Ltd	EXX	17398	17537	-0.79	-2.95	-14.92
Fortress Real Est INV A	FFA	18.87	18.91	-0.21	2.39	-98.63
Fortress Real Est INV B	FFB	1640	1625	0.92	6.84	130.99
Growthpoint Prop Ltd	GRT	1173	1173	0.00	-0.09	0.43
Harmony GM Co Ltd	HAR	14766	14205	3.95	37.40	23.47
Hammerson plc	HMN	620	623	-0.48	-0.80	-8.82
Investec Ltd	INL	11905	11966	-0.51	1.12	-5.21
Investec plc	INP	12002	12114	-0.92	1.71	-4.71
Italtile Ltd	ITE	986	992	-0.60	-13.43	-11.96
Life Healthc Grp Hldgs Ltd	LHC	1725	1735	-0.58	-2.93	-6.10
MultiChoice Group Ltd	MCG	10887	10705	1.70	5.49	34.37
Mediclinic Int plc	MEI	21.5	21	2.38	19.44	-17.31
Montauk Renewables Inc	MKR	8361	8550	-2.21	-32.02	-51.39
Mr Price Group Ltd	MRP	17864	17680	1.04	10.09	13.92
Momentum Met Hldgs Ltd	MTM	2120	2039	3.97	6.00	-3.15
Ninety One Plc	N91	4057	4012	1.12	-2.78	-5.91
Nedbank Group Ltd	NED	23040	23041	0.00	5.82	6.55
Northam Platinum Hldgs Ltd	NPH	11529	10481	10.00	6.06	-17.90
NEPI Rockcastle N.V.	NRP	13000	13470	-3.49	2.89	2.86
Netcare Limited	NTC	1217	1240	-1.85	-12.00	-14.54
Ninety One Limited	NY1	4002	3931	1.81	-3.10	-6.87
Old Mutual Limited	OMU	1207	1221	-1.15	1.09	-7.58
OUTsurance Group Ltd	OUT	4126	4081	1.10	1.68	-2.23
Pick n Pay Stores Ltd	PIK	1756	1700	3.29	-31.81	-24.54
Pepkor Holdings Ltd	PPH	1946	1928	0.93	0.05	-0.87
Quilter Plc	QLT	2430	2433	-0.12	0.45	0.08
Redefine Properties Ltd	RDF	411	410	0.24	1.23	6.75
Remgro Ltd	REM	14167	13854	2.26	-6.73	-12.81
Resilient REIT Limited	RES	4638	4617	0.45	-2.01	4.72
Reinet Investments S.C.A	RNI	48762	48293	0.97	2.23	4.59
Sappi Ltd	SAP	4881	4778	2.16	4.52	10.43
Santam Limited	SNT	30186	29877	1.03	2.33	5.34
The Spar Group Ltd	SPP	9063	9041	0.24	-20.15	-23.13
Sirius Real Estate Ltd	SRE	2188	2172	0.74	6.73	-1.22
Tiger Brands Ltd	TBS	21467	21002	2.21	4.33	6.65
Transaction Capital Ltd	TCP	987	995	-0.80	19.49	23.68
The Foschini Group Limited	TFG	10500	10517	-0.16	-3.03	-5.37
Thungela Resources Ltd	TGA	10690	10650	0.38	-9.77	-30.49
Telkom SA SOC Ltd	TKG	2649	2627	0.84	-3.92	-10.93
Truworths Int Ltd	TRU	8271	8102	2.09	7.65	11.24
Textainer Group Hldgs Ltd	TXT	94600	94600	0.00	-1.11	2.72
Woolworths Holdings Ltd	WHL	6300	6296	0.06	-5.12	-12.74
Zeda Limited	ZZD	1138	1150	-1.04	-6.11	-10.75

LOCAL EQUITIES | JSE SMALL CAP COMPANIES (Cents Per Share)

COMPANY	CODE	CLOSE	PREVIOUS	1D%	1M%	YTD%
ArcelorMittal SA Limited	ACL	122	122	0.00	22.00	-25.61
ADVTECH Ltd	ADH	2915	2908	0.24	8.49	18.79
Altron Limited A	AEL	1071	1085	-1.29	9.85	4.49
AECI Limited	AFE	9264	9111	1.68	-2.46	-15.54
Alexander Forbes Grp Hldgs	AFH	616	615	0.16	-3.75	-6.67
Afrimat Limited	AFT	5872	5925	-0.89	-6.42	-6.79
African Rainbow Cap Inv	AIL	373	379	-1.58	-24.95	-23.72
Adcock Ingram Hldgs Ltd	AIP	5376	5525	-2.70	-1.90	-10.55
Astral Foods Ltd	ARL	14279	14218	0.43	-8.47	-2.58
Attacq Limited	ATT	1000	1000	0.00	2.04	8.46
Brait PLC	BAT	116	123	-5.69	-34.09	-36.26
Blue Label Telecoms Ltd	BLU	370	370	0.00	9.47	-4.64
Coronation Fund Mngrs Ld	CML	3106	3100	0.19	-1.15	-0.32
Curro Holdings Limited	COH	1068	1077	-0.84	-2.91	-8.33
Cashbuild Ltd	CSB	13261	13255	0.05	-7.91	-20.56
DRD Gold Ltd	DRD	1552	1500	3.47	14.37	-1.59
Datatec Ltd	DTC	3870	3850	0.52	-4.40	-4.44
Emira Property Fund Ltd	EMI	861	860	0.12	-2.16	0.70
Equites Prop Fund Ltd	EQU	1241	1235	0.49	-9.81	-11.04
Famous Brands Ltd	FBR	5377	5380	-0.06	-3.05	-7.18
Fairvest Limited B	FTB	368	366	0.55	-0.54	6.98
Grindrod Ltd	GND	1284	1250	2.72	5.68	12.04
Hosken Cons Inv Ltd	HCI	17188	17070	0.69	-2.86	-15.16
Hudaco Industries Ltd	HDC	15700	15700	0.00	-4.85	-2.26
Hyprop Inv Ltd	HYP	3110	3105	0.16	-5.44	-0.03
Investec Property Fund Ltd	IPF	773	765	1.05	-7.98	-3.38
JSE Ltd	JSE	8978	9046	-0.75	6.22	-2.88
KAP Industrial Hldgs Ltd	KAP	266	264	0.76	18.22	1.53
Karooooo Ltd	KRO	49000	47100	4.03	-3.35	3.16
PSG Konsult Limited	KST	1448	1450	-0.14	-4.42	-5.67
Libstar Holdings Ltd	LBR	335	335	0.00	-1.47	-4.29
Lighthouse Properties plc	LTE	780	773	0.91	1.56	6.12
Industrials REIT Limited	MLI	0.5	0.4	25.00	-16.67	-28.57
MAS P.L.C	MSP	1595	1595	0.00	-9.89	-7.86
Metair Investments Ltd	MTA	1185	1130	4.87	-5.35	-33.24
Motus Holdings Ltd	MTH	9000	9030	-0.33	-10.54	-11.33
Murray & Roberts Hldgs	MUR	126	117	7.69	17.76	-15.44
Oceana Group Ltd	OCE	7050	7025	0.36	-2.08	-0.24
Omnia Holdings Ltd	OMN	6100	6100	0.00	-2.90	-6.69
Pan African Resource plc	PAN	530	511	3.72	28.02	29.58
PPC Limited	PPC	358	347	3.17	-5.04	-10.28
Raubex Group Ltd	RBX	2958	2830	4.52	6.48	6.71
RFG Holdings Limited	RFG	1295	1300	-0.38	0.31	-4.07
Reunert Ltd	RLO	6501	6600	-1.50	4.38	8.46
SA Corp Real Estate Ltd	SAC	258	256	0.78	3.61	11.21
Super Group Ltd	SPG	2599	2609	-0.38	-6.71	-12.64
Stor-Age Prop REIT Ltd	SSS	1413	1416	-0.21	-0.49	8.19
Southern Sun LTD	SSU	505	505	0.00	-0.98	-3.81
Sun International Ltd	SUI	4060	3972	2.22	-2.64	-0.98
Tharisa plc	THA	1185	1150	3.04	-13.50	-21.58
Tsogo Sun Gaming Ltd	TSG	1087	1092	-0.46	-5.72	-11.27
Vukile Property Fund Ltd	VKE	1535	1529	0.39	-1.10	8.71
Wilson Bayly Hlm-Ovc Ltd	WBO	13500	13349	1.13	0.54	3.80

10-YEAR BOND YIELD | SELECTED ITEMS (Basis Point Change)

REGION	YIELD	1D	1M	1Y
United States	4.20%	5	-11	—
United Kingdom	4.02%	7	-13	65
Germany	2.36%	4	-3	11
Japan	0.77%	2	5	—
South African 10Y	10.21%	5	5	20

SOUTH AFRICAN 10-YEAR

2023 vs 2024 to date

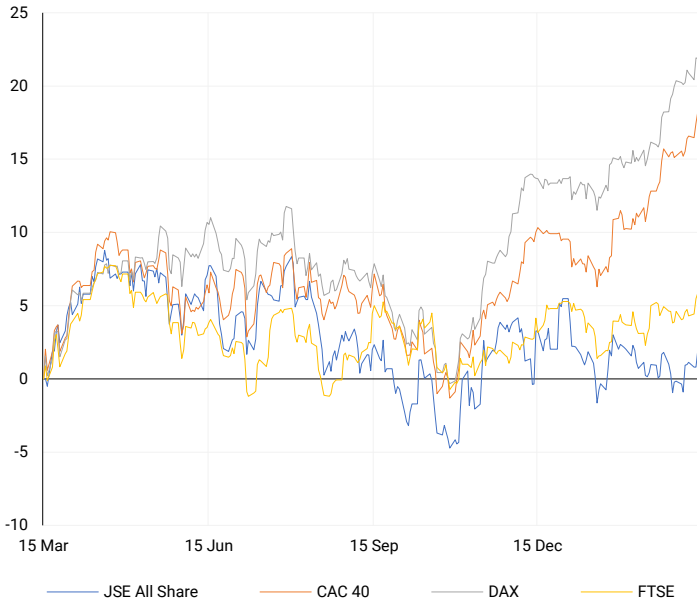


GLOBAL INTEREST RATES | SELECTED ITEMS

REGION	DATE CHANGED	CURRENT RATE
United States	Wed, 26 Jul '23	5.25%-5.50%
United Kingdom	Thu, 03 Aug '23	5.25%
European	Thu, 27 Jul '23	4.25%
SA Repo Rate	Thu, 25 May '23	8.25%
SA Prime Rate	Thu, 25 May '23	11.75%

EUROPEAN INDICES

Normalised percentage performances



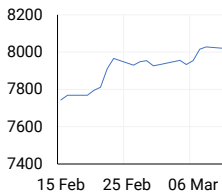
EUROPEAN MARKET SUMMARY

SELECTED ITEMS

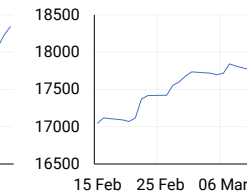
European markets ended higher on Wednesday after a varied trading session, as investors processed the latest U.S. inflation report and UK GDP figures. The Stoxx 600 index rose by 0.2%, boosted by a 3.3% increase in retail stocks, with companies like Zalando from Germany and Inditex from Spain leading the gains following their earnings announcements. The Office for National Statistics reported on Wednesday that the U.K. gross domestic product expanded by 0.2% in January, in line with forecasts. This growth follows a 0.1% decline in December. The U.K. economy slipped into a technical recession in the last quarter of the previous year.

EUROPEAN INDICES	CLOSE	PREVIOUS	1D%	5D%	1M%	YTD%
CAC 40	8137.58	8087.48	0.62	2.30	6.72	7.88
DAX 30	17961.38	17965.11	-0.02	1.38	6.40	7.22
Eurostoxx 50	5000.55	4983.20	0.35	1.73	6.64	10.59
FTSE	7772.17	7747.81	0.31	1.21	3.46	0.50

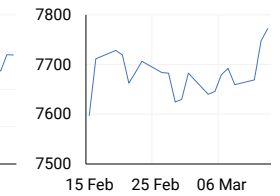
CAC 40



DAX

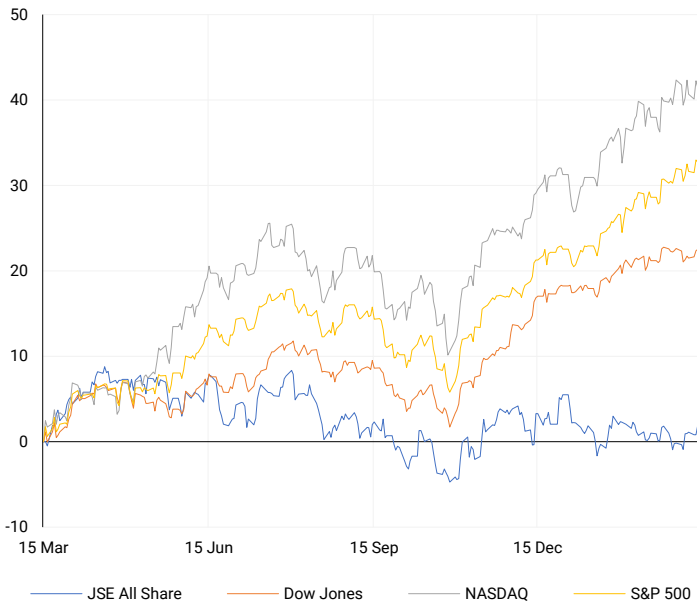


FTSE



AMERICAN INDICES

Normalised percentage performances



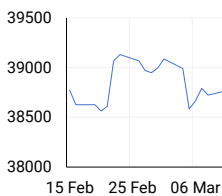
AMERICAN MARKET SUMMARY

SELECTED ITEMS

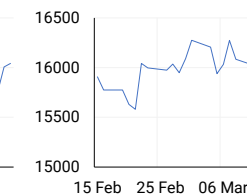
The S&P 500 and Nasdaq edged lower on Wednesday as investors took profits in chipmaker stocks, while they braced for producer price data and further clues on the inflation trend ahead of next week's Federal Reserve meeting. February U.S. producer price data due later today could offer further insight into the inflation picture. Additionally, Monthly U.S. retail sales data also is due today. Intel shares fell 4.4%. Bloomberg reported that the Pentagon had pulled out of a plan to spend as much as \$2.5 billion on a chip grant to the company.

AMERICAN INDICES	CLOSE	PREVIOUS	1D%	5D%	1M%	YTD%
Dow Jones	39043.32	39005.49	0.10	0.99	2.01	3.59
Nasdaq	16177.77	16265.64	-0.54	0.91	3.34	7.77
S&P 500	5165.31	5175.27	-0.19	1.19	4.28	8.29
US VIX	13.75	13.84	-0.65	-5.17	-13.25	10.44

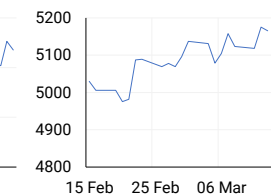
DOW JONES



NASDAQ

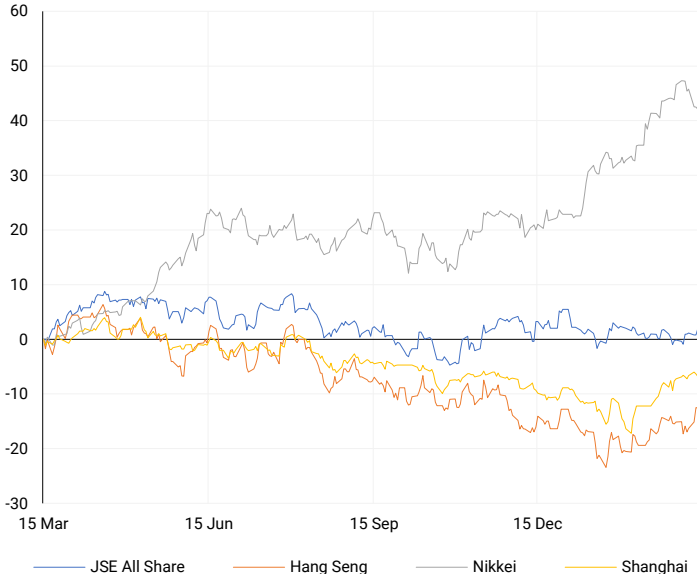


S&P 500



ASIAN INDICES

Normalised percentage performances



ASIAN MARKET SUMMARY

SELECTED ITEMS

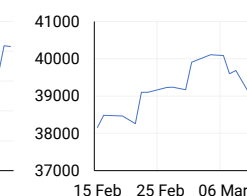
Asia-Pacific markets were largely range-bound this morning after Wall Street's tech-fueled rally dissipated, with investors focused on Japan's spring wage negotiations and India's wholesale inflation data. Japan's wage negotiations wrapped up on Wednesday, with the first overall estimate due out on Friday. Reports from local outlets have indicated that large firms offered "major" wage hikes. Strong wage increases could clear the way for the Bank of Japan to start unwinding its ultra easy monetary policy, with the central bank due to meet next Monday and Tuesday.

ASIAN INDICES	CLOSE	PREVIOUS	1D%	5D%	1M%	YTD%
Hang Seng	17082.11	17093.50	-0.07	3.92	8.48	0.20
Nikkei 225	38695.97	38797.51	-0.26	-3.48	1.93	15.63
Shanghai	3043.83	3055.94	-0.40	0.13	6.21	2.32

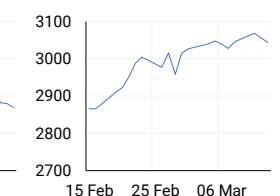
HANG SENG



NIKKEI



SHANGHAI



COMMODITIES MARKET SUMMARY

SELECTED ITEMS

Gold prices remained stable during early Asian trading hours today, hovering near record-high levels amidst a weakened dollar, with traders awaiting further economic data that could influence expectations for a mid-year interest rate cut by the U.S. Federal Reserve. This morning saw a slight increase in oil prices, buoyed by robust demand in the U.S. following a three-month low in gasoline stocks and an unexpected decline in crude inventories. Supply worries persisted amid Ukrainian attacks on Russian refineries.

COMMODITY	LAST	CLOSE	% CHG	1D%	5D%	YTD%
Brent Crude	84.12	83.94	0.21	1.93	1.25	8.90
Gold	2170.35	2174.65	-0.20	0.76	1.24	5.41
Palladium	1054.62	1059.56	-0.47	2.18	1.78	-3.44
Platinum	938.20	939.86	-0.18	2.07	2.85	-4.80
Silver	24.97	25.02	-0.20	3.65	3.51	5.17

BRENT CRUDE

One-year



PLATINUM

One-year



GOLD

One-year



CURRENCY PAIR	LAST	CLOSE	% CHG	1D%	5D%	YTD%
USDZAR	18.61	18.57	0.24	-0.61	-1.39	1.32
GBPZAR	23.81	23.77	0.14	-0.47	-0.82	2.05
EURZAR	20.36	20.34	0.11	-0.30	-0.86	0.75
AUDZAR	12.32	12.30	0.12	-0.25	-0.47	-1.25
EURUSD	1.09	1.09	-0.05	0.19	0.45	-0.81
USDJPY	147.93	147.76	0.11	0.05	-1.08	4.76
GBPUSD	1.28	1.28	-0.03	0.03	0.51	0.51
USDCHF	0.88	0.88	0.07	0.17	-0.36	4.44

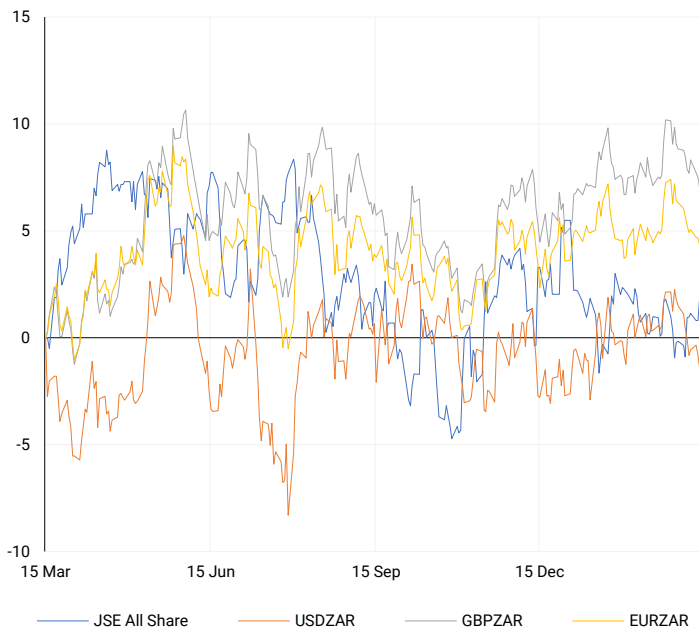
CURRENCY MARKET SUMMARY

SELECTED ITEMS

On Wednesday afternoon, the South African rand gained strength as the U.S. dollar weakened in global markets. This morning, the currency market remained calm, as the U.S. dollar stabilized against key counterparts. Market participants were on standby, anticipating further data releases from the world's largest economy to gain insights into the Federal Reserve's policy direction.

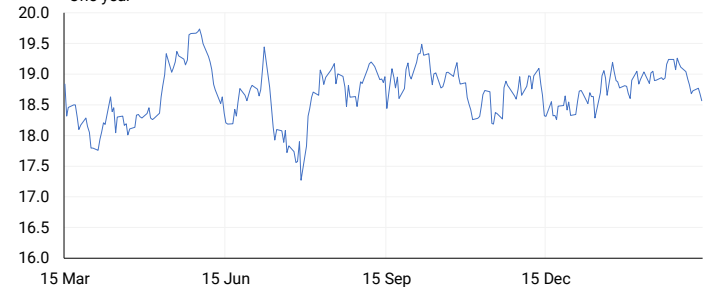
CURRENCY PAIRS vs JSE ALL SHARE

Normalised percentage performances



USDZAR

One-year



EURUSD

One-year



SOURCES | JSE, IRESS, MONEYWEB, CNBC, BBC, CNN

Disclaimer: This note is prepared for Sanlam Private Wealth (Pty) Ltd, by K2013143132 (Pty) Ltd trading as ThompsonGreen. ThompsonGreen is an independent company contracted to Sanlam Private Wealth (Pty) Ltd. The views expressed in this note are those of ThompsonGreen and/or its analysts and not necessarily the views of Sanlam Private Wealth (Pty) Ltd, Sanlam or any officer or agent thereof. K2013143132 (Pty) Ltd trading as ThompsonGreen is a research house and not a registered broker, financial adviser or financial service provider. Our editors and customer services teams also do not give personal investment advice. The information in this document is general advice only and may not be appropriate to your particular investment objectives, financial situation or particular needs. Before investing, or if you are in any doubt about your personal situation, you should seek professional advice from a stockbroker or independent financial adviser authorised by the Financial Sector Conduct Authority.