

GLOBAL OVERVIEW | SELECTED INDICES

SOUTH AFRICAN INDICES						
	CLOSE	PREVIOUS	1D%	5D%	1M%	YTD%
All Share	77053.78	76077.30	1.28	1.14	-3.11	0.21
Top 40	70519.55	69786.85	1.05	0.86	-3.68	0.04
Financial 15	17934.41	16753.47	7.05	8.41	4.38	0.34
Industrial 25	107327.48	107505.65	-0.17	-0.41	-2.94	3.48
Resource 10	55517.77	57580.48	-3.58	-5.20	-12.65	-3.50
Mid Cap	79722.32	77195.87	3.27	3.48	-2.64	-0.86
Small Cap	74542.66	73609.74	1.27	1.55	1.13	2.83
Banks	11166.32	10309.27	8.31	9.88	4.22	1.99
Retailers	6239.74	5799.75	7.59	9.37	1.98	0.10
Property (J253) - TR	1998.46	1977.05	1.08	1.46	3.87	7.23

AMERICAN INDICES						
	CLOSE	PREVIOUS	1D%	5D%	1M%	YTD%
Dow Jones	38778.10	38589.16	0.49	-0.23	-3.06	2.89
Nasdaq	17857.02	17688.88	0.95	3.86	7.02	18.96
S&P 500	5473.23	5431.60	0.77	2.10	3.20	14.75
US VIX	12.75	12.66	0.71	0.08	6.34	2.41

EUROPEAN INDICES						
	CLOSE	PREVIOUS	1D%	5D%	1M%	YTD%
CAC 40	7571.57	7503.27	0.91	-4.08	-7.30	0.38
DAX 30	18068.21	18002.02	0.37	-2.31	-3.40	7.86
Eurostoxx 50	4880.00	4838.55	0.86	-2.54	-3.63	7.93
FTSE	8142.15	8146.86	-0.06	-1.05	-3.30	5.29

ASIAN INDICES						
	CLOSE	PREVIOUS	1D%	5D%	1M%	YTD%
Hang Seng	17936.12	17941.78	-0.03	-2.35	-8.27	5.21
Nikkei 225	38102.44	38814.56	-1.83	-2.40	-1.77	13.86
Shanghai	3015.89	3032.63	-0.55	-1.16	-4.38	1.38

EARLY MORNING MARKETS						
	LAST	CLOSE	% CHG	1D%	5D%	YTD%
TENCENT	379.80	381.20	-0.37	0.00	1.71	31.36
BHP AUS	4274.00	4254.00	0.47	-2.74	-4.47	-15.61

NOTE : 5D% and 1M% are rolling percentage moves

INTERNATIONAL ECONOMIC CALENDAR | SELECTED EVENTS

TIME	AREA	TODAY'S EVENTS & RELEASES	PERIOD	EXP.	PREV.
14:30	US	Retail Sales m/m	May	0.2%	0.0%
15:15	US	Industrial Production m/m	May	0.2%	0.0%
---	---	---	---	---	---
---	---	---	---	---	---
---	---	---	---	---	---

TIME	AREA	PREVIOUS SESSION'S RELEASES	PERIOD	EXP.	ACT.
14:30	US	NY Empire State Manufacturing Index	Jun	-10.0	-6.0
---	---	---	---	---	---
---	---	---	---	---	---
---	---	---	---	---	---
---	---	---	---	---	---

JSE ALL SHARE | BEST AND WORST ONE-DAY PERFORMERS

BEST ONE-DAY % PERFORMERS						
	CODE	CLOSE	1D%	5D%	YTD%	
The Spar Group Ltd	SPP	11434	15.51	18.12	-3.02	
Karoo000 Ltd	KRO	64900	13.82	13.46	36.63	
The Foschini Group Limited	TFG	11904	10.27	15.01	7.28	
KAP Limited	KAP	265	9.50	6.43	1.15	
Firstrand Ltd	FSR	7051	9.35	11.32	-4.08	
Nedbank Group Ltd	NED	24660	9.16	10.52	14.05	

WORST ONE-DAY % PERFORMERS						
	CODE	CLOSE	1D%	5D%	YTD%	
Gold Fields Ltd	GFI	24497	-14.05	-15.64	-11.81	
Montauk Renewables Inc	MKR	9600	-6.34	-7.83	-44.19	
Alexander Forbes Grp Hldgs	AFH	691	-6.11	-1.43	4.70	
Fairvest Limited B	FTB	395	-5.50	0.77	14.83	
BID Corporation Ltd	BID	40495	-4.91	-4.94	-5.09	

DIVIDEND DATA

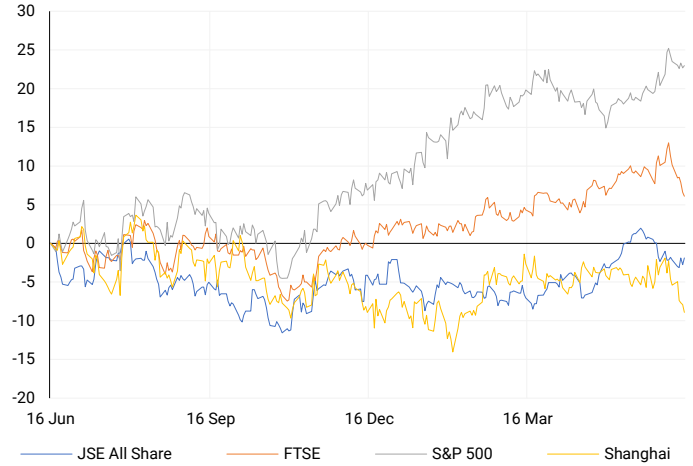
COMPANY	CODE	EXPECTED DIVIDEND	COMPANY	CODE	EXPECTED DIVIDEND
4Sight Holdings	4SI	2.5 ZARc	Reunert Ltd	RLO	90 ZARc
Afine Investments	ANI	20.5 ZARc	Vodacom Group	VOD	285 ZARc
Barloworld	BAW	210 ZARc	---	---	---
Dis-Chem Pharmacies	DCP	22.4 ZARc	---	---	---
Fairvest Ltd	FTB	21.2 ZARc	---	---	---

SOURCES | JSE, IRESS, MONEYWEB, CNBC, BBC, CNN

PLEASE SEE THE BOTTOM OF THE LAST PAGE FOR THE FULL DISCLAIMER

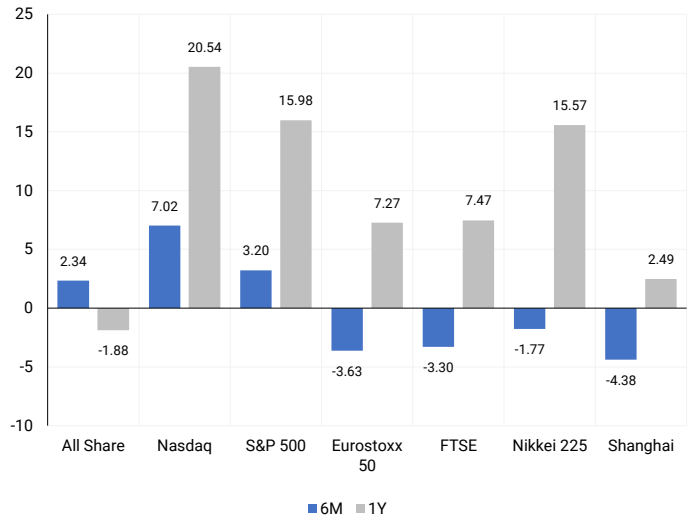
INTERNATIONAL INDICES

Normalised percentage performances - In rand terms



INTERNATIONAL INDICES

6-month & 1-year percentage performances



JSE ALL SHARE INDEX

2023 v 2024 to date



Last date to trade Tue, 18 June

LOCAL EQUITIES | JSE LARGE CAP COMPANIES (Cents Per Share)

COMPANY	CLOSE	PREVIOUS	1D%	5D%	1M%	YTD%
Absa Group Limited	16591	15275	8.62	10.64	7.58	1.34
Anglo American plc	56072	55910	0.29	-0.45	-9.66	18.42
Anglo American Plat Ltd	57557	56252	2.32	0.32	-26.21	-40.29
Anglogold Ashanti Ltd	42062	42061	0.00	0.40	-8.73	19.02
Anheuser-Busch InBev SA NV	108771	114071	-4.65	-5.64	-11.02	-9.37
BHP Group Limited	52034	52729	-1.32	-4.84	-5.98	-17.85
BID Corporation Ltd	40495	42584	-4.91	-4.94	-6.13	-5.09
British American Tob plc	55571	56607	-1.83	-2.91	-2.39	2.62
Compagnie Fin Richemont	295844	307382	-3.75	-4.42	1.66	15.22
Capitec Bank Hldgs Ltd	237310	221338	7.22	9.94	4.54	17.11
Discovery Ltd	12548	11517	8.95	11.58	7.97	-12.67
Firststrand Ltd	7051	6448	9.35	11.32	2.60	-4.08
Gold Fields Ltd	24497	28503	-14.05	-15.64	-16.52	-11.81
Glencore plc	10573	10976	-3.67	-6.80	-7.76	-5.30
Impala Platinum Hlgs Ltd	8410	8435	-0.30	-3.44	-23.57	-7.86
Kumba Iron Ore Ltd	44493	43944	1.25	-2.17	-15.77	-27.63
Mondi plc	34043	34950	-2.60	-4.27	-7.39	-6.22
MTN Group Ltd	8225	7978	3.10	2.53	-4.55	-28.79
Naspers Ltd -N-	373694	382091	-2.20	-2.81	-4.38	19.47
Prosus N.V.	66487	67899	-2.08	-2.59	-5.22	18.64
South32 Limited	4392	4474	-1.83	-6.25	-4.04	4.10
Standard Bank Group Ltd	19936	18323	8.80	9.24	5.26	-4.20
Shoprite Holdings Ltd	26460	24752	6.90	6.54	1.17	-3.80
Sanlam Limited	7648	7167	6.71	6.99	3.94	5.05
Sasol Limited	11596	11899	-2.55	-3.38	-12.81	-37.42
Sibanye Stillwater Ltd	2004	2050	-2.24	-4.02	-22.14	-19.52
Vodacom Group Ltd	9380	9081	3.29	3.68	-1.50	-11.51

SOUTH AFRICAN MARKET SUMMARY

SELECTED ITEMS

South African markets were closed on Monday due to a public holiday.

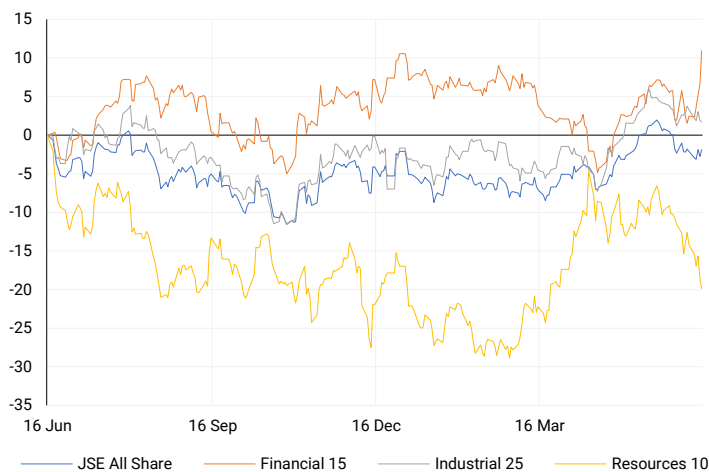
JSE ALL SHARE

One-year



LOCAL INDICES

Normalised percentage performances



LOCAL SENS ANNOUNCEMENTS

SELECTED RELEASE

NOVUS HOLDINGS LIMITED – Audited Annual Financial Statements

For the year ending March 31, 2024, the company's audited financial statements showed significant improvements. Revenue increased by 24% to R3 962 million. EBITDA surged to R628.8 million from R131.7 million, while operating profit rose to R393.5 million from R6.9 million. Headline earnings per share turned to a profit of 78.8 cents, compared to a loss of 7.4 cents last year. Earnings per share increased to 75.9 cents from 18.9 cents. The company declared a cash dividend of 50 cents per share, up from zero last year. The net asset value per share increased to 693.6 cents, and the closing cash position rose to R871.4 million from R392.2 million.

NVS | -6.62% OPEN | 589c HIGH | 589c LOW | 550c CLOSE | 550c TIME | 13:25

EXPECTED COMPANY REPORTING SCHEDULE

COMPANY	CODE	RELEASE	DATE
Telkom	TKG	Final	18 June'24
Mr Price	MRP	Final	21 June'24
Prosus	PRX	Final	24 June'24
Invicta	IVT	Final	26 June'24
Nampak	NPK	Interim	28 June'24

BANK AND OTHER SELECTE PREFERENCE SHARES

COMPANY	CODE	CLOSE	CLEAN YIELD	NEXT LDT (Est.)
Investec Limited	INPR	8494	11.24	Thu, 06 Jun '24
Standard Bank	SBPP	8449	11.15	Thu, 05 Sep '24
Absa	ABSP	72600	11.48	Thu, 12 Sep '24
Capitec	CPIP	10000	9.69	Thu, 19 Sep '24
Steinhoff	SHFF	9730	10.47	Thu, 17 Oct '24
Grindrod	GNDP	8650	12.22	Thu, 19 Sep '24
Netcare	NTCP	7526	11.82	Thu, 31 Oct '24
Discovery	DSBP	9250	11.91	Thu, 19 Sep '24
Invicta	IVTP	10900	13.41	Thu, 27 Jun '24

LOCAL EQUITIES | JSE MID CAP COMPANIES (Cents Per Share)

COMPANY	CODE	CLOSE	PREVIOUS	1D%	1M%	YTD%
Aspen Pharmacare Hldgs Ltd	APN	22013	23081	-4.63	-4.20	8.17
African Rainbow Min Ltd	ARI	21434	21253	0.85	-7.13	7.17
AVI Ltd	AVI	8845	8580	3.09	-1.21	7.77
Barloworld Ltd	BAW	8890	8874	0.18	0.30	12.53
Bidvest Ltd	BVT	25729	24583	4.66	-0.28	1.98
Bytes Technology Grp PLC	BYI	12450	13005	-4.27	2.21	-13.06
Capital&Counties Prop plc	CCO	3180	3330	-4.50	-0.22	-2.15
Clicks Group Ltd	CLS	30951	29714	4.16	0.64	-4.97
Dis-Chem Pharmacies Ltd	DCP	3228	3167	1.93	-3.76	5.18
Distell Group Hldgs Ltd	DGH	90	88	2.27	3.45	4.65
Exxaro Resources Ltd	EXX	17100	17010	0.53	-6.80	-16.37
Fortress Real Est INV B	FFB	1588	1590	-0.13	4.89	10.58
Growthpoint Prop Ltd	GRT	1172	1120	4.64	6.55	0.34
Harmony GM Co Ltd	HAR	15657	15263	2.58	-12.88	30.92
Hammerson plc	HMN	652	663	-1.66	-1.95	-4.12
Investec Ltd	INL	13004	12475	4.24	3.40	3.54
Investec plc	INP	12996	12572	3.37	2.16	3.18
Italtile Ltd	ITE	995	951	4.63	5.85	-11.16
Life Healthc Grp Hldgs Ltd	LHC	1211	1150	5.30	13.71	-34.08
MultiChoice Group Ltd	MCG	10492	10947	-4.16	-9.24	29.50
Montauk Renewables Inc	MKR	9600	10250	-6.34	6.90	-44.19
Mr Price Group Ltd	MRP	19433	18294	6.23	5.04	23.93
Momentum Met Hldgs Ltd	MTM	2284	2139	6.78	2.28	4.34
Ninety One Plc	N91	3759	3754	0.13	-7.30	-12.82
Nedbank Group Ltd	NED	24660	22590	9.16	3.61	14.05
Northam Platinum Hldgs Ltd	NPH	10800	10774	0.24	-26.88	-23.09
NEPI Rockcastle N.V.	NRP	13366	13339	0.20	6.65	5.76
Netcare Limited	NTC	1243	1178	5.52	6.88	-12.71
Ninety One Limited	NY1	3713	3700	0.35	-5.83	-13.59
Old Mutual Limited	OMU	1131	1045	8.23	0.53	-13.40
OUTsurance Group Ltd	OUT	4457	4155	7.27	4.50	5.62
Pick n Pay Stores Ltd	PIK	2629	2476	6.18	31.78	12.98
Pepkor Holdings Ltd	PPH	1851	1735	6.69	-2.58	-5.71
Quilter Plc	QLT	2696	2772	-2.74	5.56	11.04
Redefine Properties Ltd	RDF	392	377	3.98	0.77	1.82
Remgro Ltd	REM	13208	12711	3.91	5.01	-18.71
Resilient REIT Limited	RES	4428	4340	2.03	1.44	-0.02
Reinet Investments S.C.A	RNI	47090	48178	-2.26	4.51	1.01
Sappi Ltd	SAP	4943	4857	1.77	-9.68	11.83
Santam Limited	SNT	29410	29660	-0.84	-2.37	2.63
The Spar Group Ltd	SPP	11434	9899	15.51	5.65	-3.02
Sirius Real Estate Ltd	SRE	2251	2322	-3.06	-0.44	1.63
Tiger Brands Ltd	TBS	20000	19385	3.17	-2.68	-0.64
Transaction Capital Ltd	TCP	280	264	6.06	4.48	-64.91
The Foschini Group Limited	TFG	11904	10795	10.27	11.66	7.28
Thungela Resources Ltd	TGA	12020	12122	-0.84	-9.24	-21.85
Telkom SA SOC Ltd	TKG	2420	2365	2.33	-2.58	-18.63
Truworths Int Ltd	TRU	8712	8011	8.75	7.56	17.18
Woolworths Holdings Ltd	WHL	5903	5425	8.81	-6.41	-18.24
Zeda Limited	ZZD	1179	1143	3.15	-1.67	-7.53

LOCAL EQUITIES | JSE SMALL CAP COMPANIES (Cents Per Share)

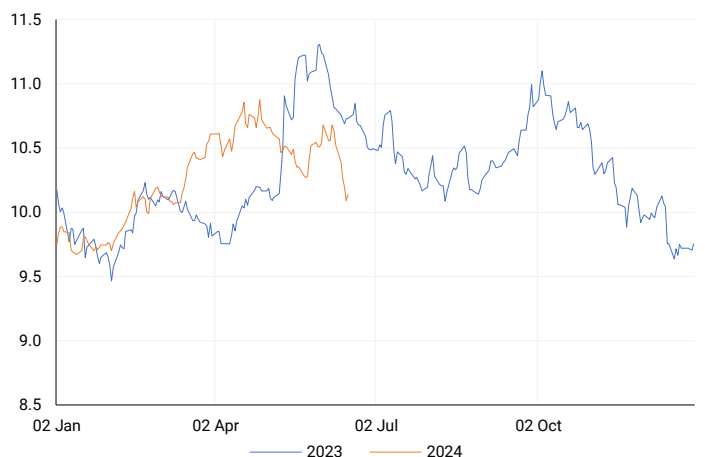
COMPANY	CODE	CLOSE	PREVIOUS	1D%	1M%	YTD%
ArcelorMittal SA Limited	ACL	100	101	-0.99	-13.04	-39.02
ADVTECH Ltd	ADH	2740	2687	1.97	-0.36	11.65
Altron Limited A	AEL	1252	1280	-2.19	10.60	22.15
AECI Limited	AFE	9691	9500	2.01	0.78	-11.65
Alexander Forbes Grp Hldgs	AFH	691	736	-6.11	8.82	4.70
Afrimat Limited	AFT	6663	6677	-0.21	-2.80	5.76
African Rainbow Cap Inv	AIL	581	590	-1.53	3.38	18.81
Adcock Ingram Hldgs Ltd	AIP	5774	5414	6.65	4.96	-3.93
Astral Foods Ltd	ARL	15389	14349	7.25	3.50	4.99
Attacq Limited	ATT	1037	1030	0.68	-0.29	12.47
Brait PLC	BAT	90	89	1.12	-21.74	-50.55
Blue Label Telecoms Ltd	BLU	410	420	-2.38	-4.87	5.67
Coronation Fund Mngrs Ld	CML	3323	3429	-3.09	1.50	6.64
Curro Holdings Limited	COH	1030	1040	-0.96	-4.28	-11.59
Cashbuild Ltd	CSB	14849	14580	1.84	4.45	-11.05
DRD Gold Ltd	DRD	1499	1535	-2.35	-9.43	-4.95
Datatec Ltd	DTC	3722	3811	-2.34	-1.48	-8.10
Emira Property Fund Ltd	EMI	1000	1000	0.00	6.27	16.96
Equites Prop Fund Ltd	EQU	1285	1264	1.66	-2.36	-7.89
Famous Brands Ltd	FBR	4990	4950	0.81	-6.19	-13.86
Fairvest Limited B	FTB	395	418	-5.50	6.47	14.83
Grindrod Ltd	GND	1353	1318	2.66	-0.15	18.06
Hosken Cons Inv Ltd	HCI	16500	15992	3.18	-7.08	-18.56
Hudaco Industries Ltd	HDC	16900	16787	0.67	1.73	5.21
Hyprop Inv Ltd	HYP	2916	2831	3.00	1.50	-6.27
Investec Property Fund Ltd	IPF	688	714	-3.64	1.62	-14.00
JSE Ltd	JSE	9950	9550	4.19	7.58	7.64
KAP Industrial Hldgs Ltd	KAP	265	242	9.50	1.53	1.15
Karooooo Ltd	KRO	64900	57019	13.82	18.00	36.63
PSG Konsult Limited	KST	1655	1633	1.35	6.50	7.82
Libstar Holdings Ltd	LBR	370	353	4.82	-2.63	5.71
Lighthouse Properties plc	LTE	776	776	0.00	-0.77	5.58
Industrials REIT Limited	MLI	0.5	0.5	0.00	-9.09	-28.57
MAS P.L.C	MSP	1640	1723	-4.82	-3.59	-5.26
Metair Investments Ltd	MTA	1107	1095	1.10	2.50	-37.63
Motus Holdings Ltd	MTH	8940	8477	5.46	0.20	-11.92
Murray & Roberts Hldgs	MUR	215	191	12.57	37.82	44.30
Oceana Group Ltd	OCE	7500	7548	-0.64	2.05	6.13
Omnia Holdings Ltd	OMN	5895	5828	1.15	4.71	-9.82
Pan African Resource plc	PAN	576	568	1.41	-4.00	40.83
PPC Limited	PPC	327	329	-0.61	-4.11	-18.05
Raubex Group Ltd	RBX	3564	3576	-0.34	-4.35	28.57
RFG Holdings Limited	RFG	1380	1394	-1.00	4.31	2.22
Reunert Ltd	RLO	6824	6650	2.62	1.53	13.85
SA Corp Real Estate Ltd	SAC	245	244	0.41	-4.30	5.60
Super Group Ltd	SPG	2770	2750	0.73	-2.22	-6.89
Stor-Age Prop REIT Ltd	SSS	1350	1340	0.75	0.60	3.37
Southern Sun LTD	SSU	550	536	2.61	-0.54	4.76
Sun International Ltd	SUI	3598	3540	1.64	0.17	-12.24
Tharisa plc	THA	1855	1850	0.27	6.30	22.77
Tsogo Sun Gaming Ltd	TSG	1108	1069	3.65	-6.02	-9.55
Vukile Property Fund Ltd	VKE	1501	1512	-0.73	-3.16	6.30
Wilson Bayly Hlm-Ovc Ltd	WBO	15427	15315	0.73	6.39	18.61

10-YEAR BOND YIELD | SELECTED ITEMS (Basis Point Change)

REGION	YIELD	1D	1M	1Y
United States	4.27%	4	-16	--
United Kingdom	4.11%	6	-1	-29
Germany	2.41%	5	-10	-6
Japan	0.93%	1	-1	--
South African 10Y	10.36%	2	-28	-38

SOUTH AFRICAN 10-YEAR

2023 vs 2024 to date

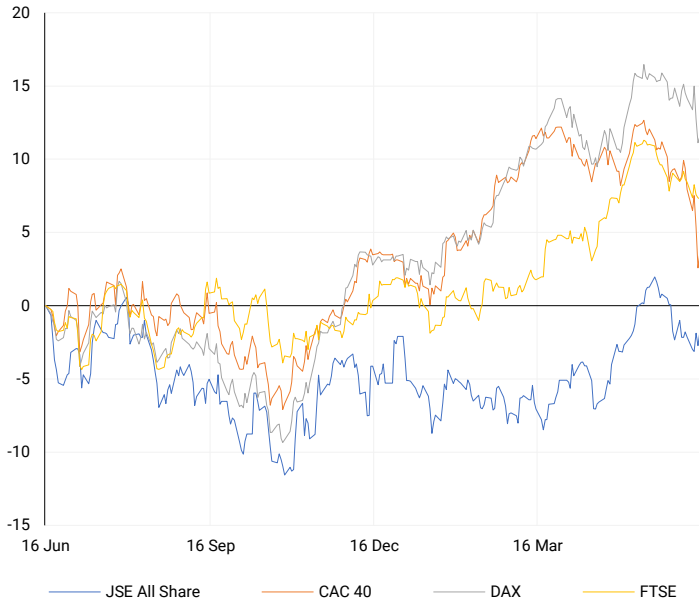


GLOBAL INTEREST RATES | SELECTED ITEMS

REGION	DATE CHANGED	CURRENT RATE
United States	Wed, 26 Jul '23	5.25%-5.50%
United Kingdom	Thu, 03 Aug '23	5.25%
European	Thu, 27 Jul '23	4.25%
SA Repo Rate	Thu, 25 May '23	8.25%
SA Prime Rate	Thu, 25 May '23	11.75%

EUROPEAN INDICES

Normalised percentage performances



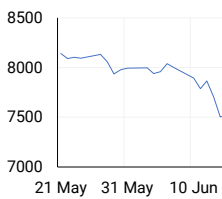
EUROPEAN MARKET SUMMARY

SELECTED ITEMS

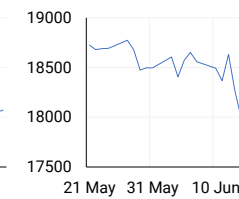
European shares closed slightly higher on Monday, with banks and technology stocks rebounding after last week's losses caused by political uncertainty in France. The pan-European STOXX 600 edged up 0.1%, recovering from its worst weekly drop of the year. Banks rose nearly 1% and technology stocks gained 0.6%, bouncing back from significant declines. Additionally, Italian consumer prices rose 0.2% month-on-month in May and 0.8% year-on-year, as expected. Inflation data from the UK and the euro zone, along with interest rate decisions from central banks in Switzerland, Norway, and the UK, are anticipated later this week.

EUROPEAN INDICES	CLOSE	PREVIOUS	1D%	5D%	1M%	YTD%
CAC 40	7571.57	7503.27	0.91	-4.08	-7.30	0.38
DAX 30	18068.21	18002.02	0.37	-2.31	-3.40	7.86
Eurostoxx 50	4880.00	4838.55	0.86	-2.54	-3.63	7.93
FTSE	8142.15	8146.86	-0.06	-1.05	-3.30	5.29

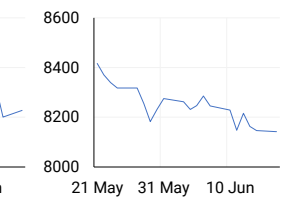
CAC 40



DAX



FTSE



AMERICAN INDICES

Normalised percentage performances



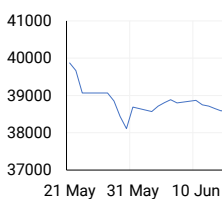
AMERICAN MARKET SUMMARY

SELECTED ITEMS

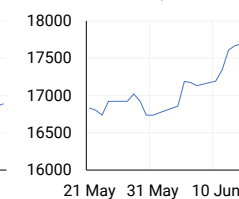
The S&P 500 and Nasdaq hit record highs on Monday as tech stocks surged due to excitement about artificial intelligence ahead of upcoming economic data and Federal Reserve speeches. Apple and Microsoft shares rose 1.97% and 1.31% respectively, with Apple's boost continuing from last week's announcement of new AI features for iPhones. Philadelphia Fed President Patrick Harker mentioned the possibility of a rate cut later this year. This week's key economic reports include May retail sales, industrial production, housing starts, and the S&P flash Purchasing Managers' Index. Markets will be closed on Wednesday for the Juneteenth holiday.

AMERICAN INDICES	CLOSE	PREVIOUS	1D%	5D%	1M%	YTD%
Dow Jones	38778.10	38589.16	0.49	-0.23	-3.06	2.89
Nasdaq	17857.02	17688.88	0.95	3.86	7.02	18.96
S&P 500	5473.23	5431.60	0.77	2.10	3.20	14.75
US VIX	12.75	12.66	0.71	0.08	6.34	2.41

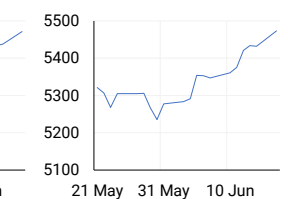
DOW JONES



NASDAQ

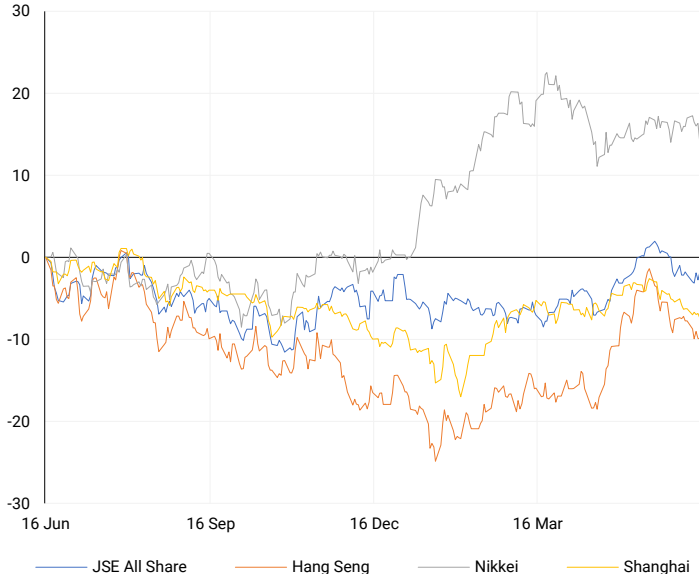


S&P 500



ASIAN INDICES

Normalised percentage performances



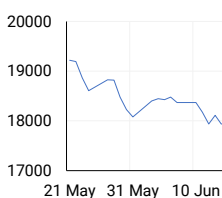
ASIAN MARKET SUMMARY

SELECTED ITEMS

Asia-Pacific markets rebounded this morning, with Japan's Nikkei 225 rising 0.83% after Monday's declines. Bank of Japan Governor Kazuo Ueda suggested a potential rate hike in July, depending on economic data. South Korea's Kospi increased by 0.84%, driven by gains in chipmakers Samsung Electronics and SK Hynix, which rose about 2.3% and 3%. Hong Kong's Hang Seng index slipped 0.17%, while mainland China's CSI 300 edged up 0.15%.

ASIAN INDICES	CLOSE	PREVIOUS	1D%	5D%	1M%	YTD%
Hang Seng	17936.12	17941.78	-0.03	-2.35	-8.27	5.21
Nikkei 225	38102.44	38814.56	-1.83	-2.40	-1.77	13.86
Shanghai	3015.89	3032.63	-0.55	-1.16	-4.38	1.38

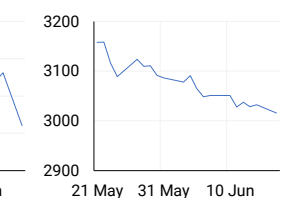
HANG SENG



NIKKEI



SHANGHAI



COMMODITIES MARKET SUMMARY

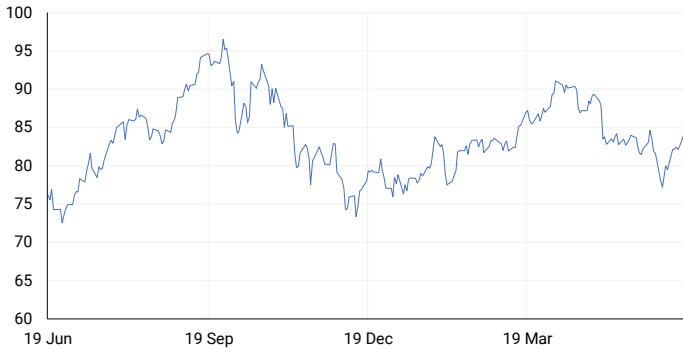
SELECTED ITEMS

This morning, gold prices edged higher as Treasury yields dipped, while investors awaited economic data and Federal Reserve officials' comments for insights into potential U.S. interest rate cuts. Meanwhile, oil prices rose in early trading, continuing gains from the previous session due to optimistic demand forecasts and expectations that OPEC+ might delay or reverse supply increases planned for the fourth quarter of the year.

COMMODITY	LAST	CLOSE	% CHG	1D%	5D%	YTD%
Brent Crude	84.14	84.49	-0.41	2.29	2.87	9.61
Gold	2322.31	2319.08	0.14	-0.59	0.36	12.41
Palladium	896.00	894.44	0.17	-0.26	-1.82	-18.48
Platinum	976.40	972.40	0.41	1.15	-0.22	-1.50
Silver	29.45	29.46	-0.03	-0.34	-0.94	23.84

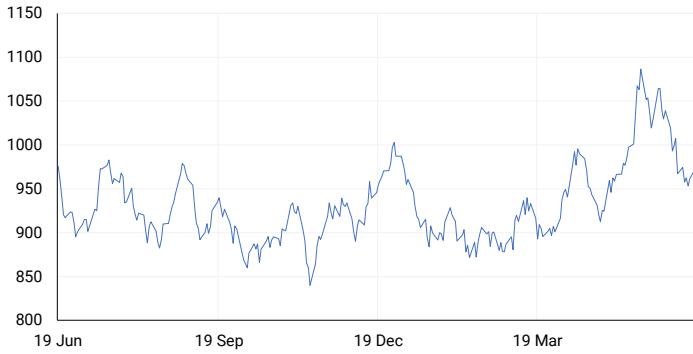
BRENT CRUDE

One-year



PLATINUM

One-year



GOLD

One-year



CURRENCY PAIR	LAST	CLOSE	% CHG	1D%	5D%	YTD%
USDZAR	18.26	18.26	0.04	-0.52	-2.48	-0.37
GBPZAR	23.19	23.20	-0.03	-0.44	-2.68	-0.43
EURZAR	19.59	19.59	-0.04	-0.36	-2.77	-2.95
AUDZAR	12.10	12.07	0.24	-0.66	-2.44	-3.09
EURUSD	1.07	1.07	-0.10	0.29	-0.29	-2.75
USDJPY	157.80	157.74	0.04	0.25	0.45	11.84
GBPUSD	1.27	1.27	-0.07	0.15	-0.20	-0.21
USDCHF	0.89	0.89	0.02	-0.06	-0.78	5.70

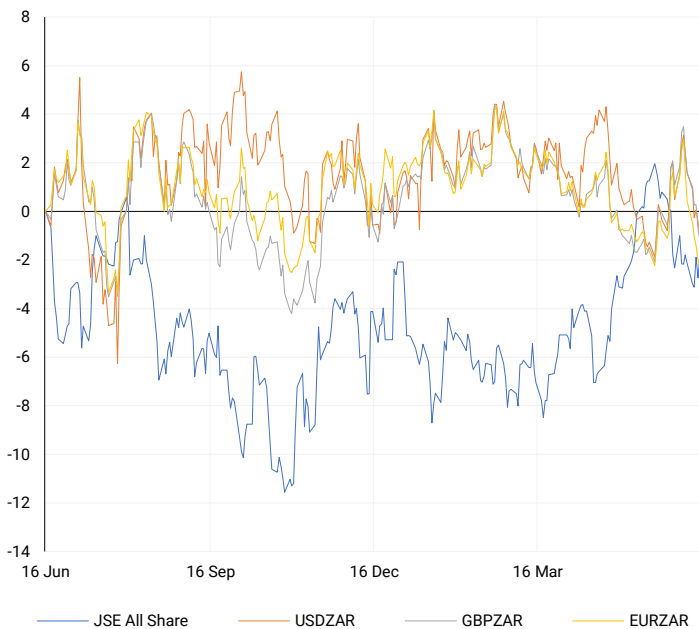
CURRENCY MARKET SUMMARY

SELECTED ITEMS

South Africa's rand strengthened last week Friday following the announcement that the Democratic Alliance and the African National Congress had reached an agreement to form a unity government. This morning, the dollar continued its decline against the euro and sterling, following losses from the previous day, as concerns about the potential for a far-right French government eased. Despite an increase in Treasury yields overnight, the U.S. currency did not strengthen, with investors focusing on upcoming retail sales data and Federal Reserve officials' comments to assess the outlook for interest rate cuts.

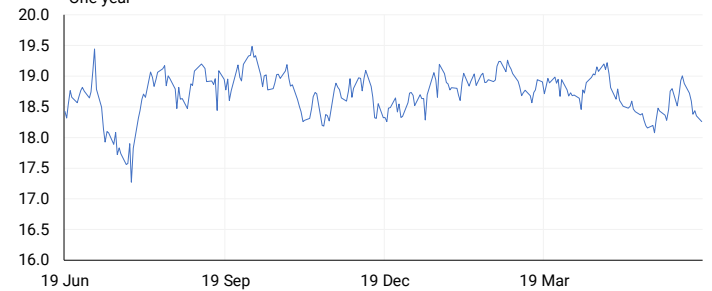
CURRENCY PAIRS vs JSE ALL SHARE

Normalised percentage performances



USDZAR

One-year



EURUSD

One-year



SOURCES | JSE, IRESS, MONEYWEB, CNBC, BBC, CNN

Disclaimer: This note is prepared for Sanlam Private Wealth (Pty) Ltd, by K2013143132 (Pty) Ltd trading as ThompsonGreen. ThompsonGreen is an independent company contracted to Sanlam Private Wealth (Pty) Ltd. The views expressed in this note are those of ThompsonGreen and/or its analysts and not necessarily the views of Sanlam Private Wealth (Pty) Ltd, Sanlam or any officer or agent thereof. K2013143132 (Pty) Ltd trading as ThompsonGreen is a research house and not a registered broker, financial adviser or financial service provider. Our editors and customer services teams also do not give personal investment advice. The information in this document is general advice only and may not be appropriate to your particular investment objectives, financial situation or particular needs. Before investing, or if you are in any doubt about your personal situation, you should seek professional advice from a stockbroker or independent financial adviser authorised by the Financial Sector Conduct Authority.