

GLOBAL OVERVIEW | SELECTED INDICES

SOUTH AFRICAN INDICES	CLOSE	PREVIOUS	1D%	5D%	1M%	YTD%
All Share	80263.14	79767.56	0.62	4.17	1.41	4.38
Top 40	73512.36	72857.56	0.90	4.24	1.05	4.28
Financial 15	18899.74	19030.98	-0.69	5.38	9.66	5.74
Industrial 25	109739.53	108802.85	0.86	2.25	-0.09	5.81
Resource 10	58977.74	57523.84	2.53	6.23	-5.76	2.51
Mid Cap	84058.14	84189.01	-0.16	5.44	3.00	4.53
Small Cap	77807.20	78271.36	-0.59	4.38	5.03	7.33
Banks	11833.59	11970.24	-1.14	5.98	10.61	8.09
Retailers	6535.90	6702.56	-2.49	4.75	8.34	4.85
Property (J253) - TR	2055.48	2041.24	0.70	2.85	5.33	10.29

AMERICAN INDICES	CLOSE	PREVIOUS	1D%	5D%	1M%	YTD%
Dow Jones	39411.21	39150.33	0.67	1.63	0.87	4.57
Nasdaq	17496.82	17689.36	-1.09	-2.02	3.40	16.56
S&P 500	5447.87	5464.62	-0.31	-0.46	2.70	14.22
US VIX	13.33	13.20	0.98	4.55	11.74	7.07

EUROPEAN INDICES	CLOSE	PREVIOUS	1D%	5D%	1M%	YTD%
CAC 40	7706.89	7628.57	1.03	1.79	-4.79	2.17
DAX 30	18325.58	18163.52	0.89	1.42	-1.97	9.40
Eurostoxx 50	4960.20	4896.35	1.30	1.64	-1.51	9.70
FTSE	8281.55	8237.72	0.53	1.71	-0.43	7.09

ASIAN INDICES	CLOSE	PREVIOUS	1D%	5D%	1M%	YTD%
Hang Seng	18027.71	18028.52	0.00	0.51	-3.12	5.75
Nikkei 225	38804.65	38596.47	0.54	1.84	0.41	15.96
Shanghai	2963.10	2998.14	-1.17	-1.75	-4.07	-0.40

EARLY MORNING MARKETS	LAST	CLOSE	% CHG	1D%	5D%	YTD%
TENCENT	383.60	380.40	0.84	-0.26	-0.21	31.08
BHP AUS	4316.00	4243.00	1.72	-0.82	-0.26	-15.83

NOTE : 5D% and 1M% are rolling percentage moves

INTERNATIONAL ECONOMIC CALENDAR | SELECTED EVENTS

TIME	AREA	TODAY'S EVENTS & RELEASES	PERIOD	EXP.	PREV.
9:00	ZA	Leading Business Cycle Indicator m/m	Apr	-0.8%	-1.9%
16:00	US	CB Consumer Confidence	Jun	99.0	102.0
---	---	---	---	---	---
---	---	---	---	---	---
---	---	---	---	---	---

TIME	AREA	PREVIOUS SESSION'S RELEASES	PERIOD	EXP.	ACT.
9:00	US	Fed Waller Speech	---	---	---
10:00	DE	Ifo Business Climate	Jun	89.4	88.6
---	---	---	---	---	---
---	---	---	---	---	---
---	---	---	---	---	---

JSE ALL SHARE | BEST AND WORST ONE-DAY PERFORMERS

BEST ONE-DAY % PERFORMERS	CODE	CLOSE	1D%	5D%	YTD%
Karoo000 Ltd	KRO	63412	6.07	-2.29	33.50
Northam Platinum Hldgs Ltd	NPH	12985	5.79	20.23	-7.53
Anglo American Plat Ltd	AMS	64612	4.83	12.26	-32.98
Anheuser-Busch InBev SA NV	ANH	110658	4.00	1.73	-7.80
British American Tob plc	BTI	58500	3.77	5.27	8.03
RCL Foods Limited	RCL	1270	3.67	11.99	49.24

WORST ONE-DAY % PERFORMERS	CODE	CLOSE	1D%	5D%	YTD%
Brait PLC	BAT	87	-8.42	-3.33	-52.20
KAP Limited	KAP	295	-4.84	11.32	12.60
Shoprite Holdings Ltd	SHP	27941	-4.64	5.60	1.59
The Foschini Group Limited	TFG	12537	-4.11	5.32	12.99
Italtile Ltd	ITE	1108	-3.99	11.36	-1.07

DIVIDEND DATA

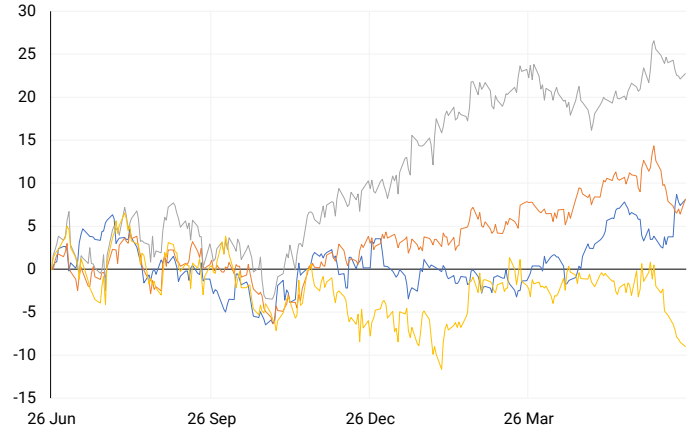
COMPANY	CODE	EXPECTED DIVIDEND	COMPANY	CODE	EXPECTED DIVIDEND
British American Tobacco plc	BTI	58.8 GBPP	Sirius Real Estate	SRE	3.0 EURc
Capital Appreciation	CTA	5.7 ZARc	Sygnia	SYG	90 ZARc
Clicks Group	CLS	210 ZARc	Vukile Property Fund	VKE	72.1 ZARc
Emira Property Fund	EMI	55.2 ZARc	---	---	---
Oceana Group	OCE	195 ZARc	---	---	---

SOURCES | JSE, IRESS, MONEYWEB, CNBC, BBC, CNN

PLEASE SEE THE BOTTOM OF THE LAST PAGE FOR THE FULL DISCLAIMER

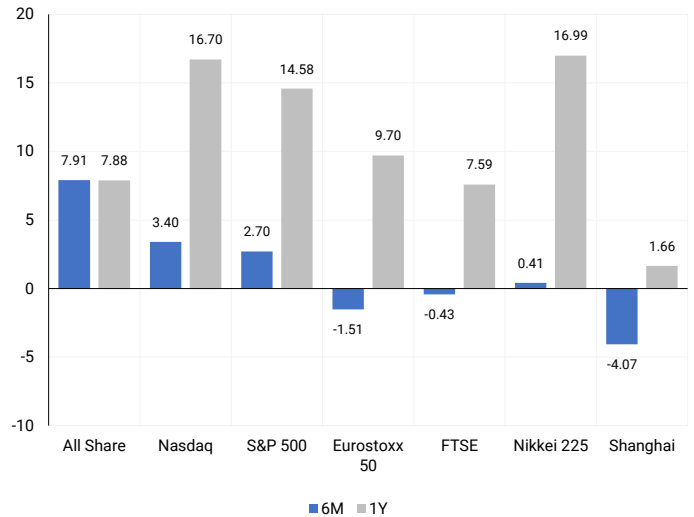
INTERNATIONAL INDICES

Normalised percentage performances - In rand terms



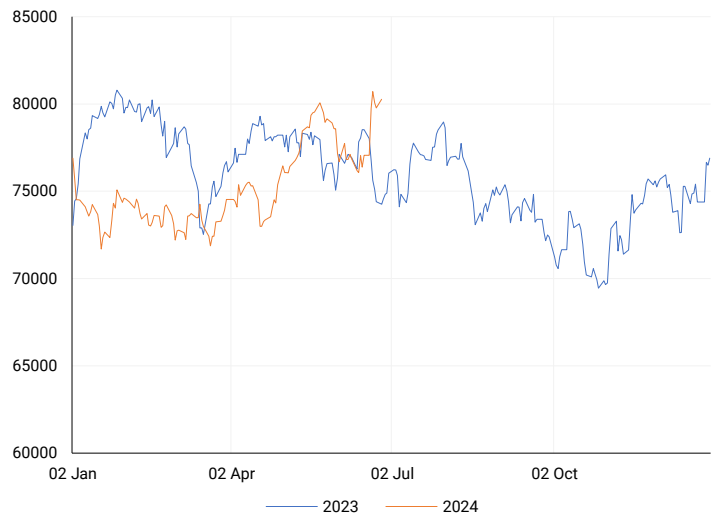
INTERNATIONAL INDICES

6-month & 1-year percentage performances



JSE ALL SHARE INDEX

2023 v 2024 to date



Last date to trade Tue, 25 June

## LOCAL EQUITIES | JSE LARGE CAP COMPANIES (Cents Per Share)

COMPANY	CLOSE	PREVIOUS	1D%	5D%	1M%	YTD%
Absa Group Limited	17419	17268	0.87	4.99	12.39	6.40
Anglo American plc	57617	55798	3.26	2.76	-6.42	21.69
Anglo American Plat Ltd	64612	61635	4.83	12.26	-9.98	-32.98
Anglogold Ashanti Ltd	43858	42955	2.10	4.27	-2.29	24.10
Anheuser-Busch InBev SA NV	110658	106400	4.00	1.73	-7.87	-7.80
BHP Group Limited	51664	50720	1.86	-0.71	-5.49	-18.44
BID Corporation Ltd	42553	42071	1.15	5.08	2.77	-0.26
British American Tob plc	58500	56375	3.77	5.27	4.05	8.03
Compagnie Fin Richemont	286542	277500	3.26	-3.14	-0.49	11.60
Capitec Bank Hldgs Ltd	256900	259996	-1.19	8.26	13.39	26.78
Discovery Ltd	13454	13550	-0.71	7.22	14.32	-6.36
Firststrand Ltd	7465	7677	-2.76	5.87	9.22	1.55
Gold Fields Ltd	27229	26406	3.12	11.15	-7.83	-1.98
Glencore plc	10610	10366	2.35	0.35	-6.42	-4.97
Impala Platinum Hlgs Ltd	9440	9174	2.90	12.25	-10.76	3.43
Kumba Iron Ore Ltd	45401	45984	-1.27	2.04	-14.32	-26.15
Mondi plc	34512	34253	0.76	1.38	-7.85	-4.93
MTN Group Ltd	8528	8512	0.19	3.68	-0.93	-26.16
Naspers Ltd -N-	368448	358913	2.66	-1.40	-5.57	17.79
Prosus N.V.	67001	65238	2.70	0.77	-3.04	19.56
South32 Limited	4491	4434	1.29	2.25	-5.55	6.45
Standard Bank Group Ltd	21200	21219	-0.09	6.34	12.39	1.87
Shoprite Holdings Ltd	27941	29300	-4.64	5.60	5.39	1.59
Sanlam Limited	7964	8120	-1.92	4.13	8.37	9.40
Sasol Limited	13850	13531	2.36	19.44	5.32	-25.25
Sibanye Stillwater Ltd	2115	2079	1.73	5.54	-11.13	-15.06
Vodacom Group Ltd	9761	9546	2.25	4.06	1.88	-7.92

## SOUTH AFRICAN MARKET SUMMARY

### SELECTED ITEMS

On the Johannesburg Stock Exchange, the blue-chip Top-40 index closed 0.9% higher. Consultations for forming a new cabinet are ongoing, with an announcement expected soon. President Ramaphosa emphasized that economic growth and job creation are the government's top priorities. Additionally, Prosus NV and its parent Naspers reported a full-year trading profit of \$38 million in their e-commerce business, marking its first-ever profit, ahead of new CEO Fabricio Bloisi's tenure starting in July. This segment includes companies like iFood in Brazil and PayU in India.

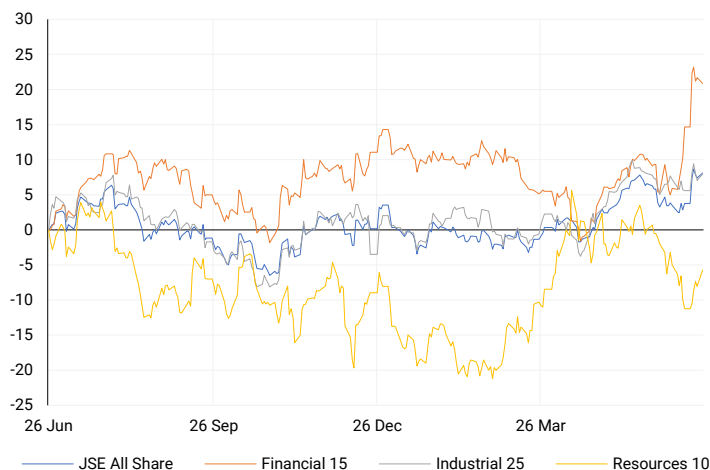
### JSE ALL SHARE

One-year



### LOCAL INDICES

Normalised percentage performances



### LOCAL SENS ANNOUNCEMENTS

#### SELECTED RELEASE

##### NASPERS LIMITED – Annual results

For the year ended March 31, 2024, the company reported a revenue increase to \$6431 million from \$5960 million the previous year. Despite an operating loss of \$562 million, this was a significant improvement from the \$1073 million loss in 2023. Earnings per ordinary share decreased to 1595 US cents from 2014 US cents, while headline earnings per share rose to 792 US cents from 143 US cents. Core headline earnings per share also improved, reaching 1148 US cents from 546 US cents. For total operations, earnings per share dropped to 1532 US cents from 2078 US cents, but headline earnings per share increased to 759 US cents from 119 US cents.

NPN | 2.66% OPEN | 358500c HIGH | 374059c LOW | 358209c CLOSE | 368448c TIME | 07:50

##### PROSUS NV – Annual results

For the year ended March 31, 2024, the company reported a revenue of \$5467 million, up from \$4947 million in 2023. The operating loss improved to \$546 million from \$1027 million the previous year. Earnings per ordinary share decreased to 265 US cents from 357 US cents, while headline earnings per share rose significantly to 132 US cents from 27 US cents. Core headline earnings per share also improved, reaching 193 US cents from 99 US cents. For total operations, earnings per share dropped to 255 US cents from 368 US cents, but headline earnings per share increased to 127 US cents from 22 US cents.

PRX | 2.70% OPEN | 66401c HIGH | 68000c LOW | 65520c CLOSE | 67001c TIME | 07:55

##### INVICTA HOLDINGS LIMITED – Audited annual consolidated results

For the year ended March 31, 2024, the audited annual consolidated results show that shareholder's equity increased by 8% to R5.77 billion, up from R5.34 billion in 2023. Revenue rose by 7% to R8.28 billion from R7.77 billion the previous year. The profit for the year slightly declined by 1% to R584.1 million compared to R587.2 million in 2023. Basic earnings per share increased by 2% to 492 cents, while headline earnings per share decreased by 4% to 470 cents. Sustainable headline earnings per share grew by 5% to 488 cents. The net asset value per ordinary share rose by 13% to 5250 cents, and the dividend per share increased by 5% to 105 cents.

IVT | -1.43% OPEN | 2712c HIGH | 2775c LOW | 2712c CLOSE | 2760c TIME | 07:30

##### RCL FOODS LIMITED – Trading statement

In line with the JSE Limited Listings Requirements, RCL FOODS has informed its shareholders that headline earnings per share (HEPS) for the financial year ending June 2024 are anticipated to be at least 75% higher than the 68.3 cents reported for the year ending June 2023. This indicates an increase of at least 51.2 cents per share, largely driven by improvements in the Rainbow and Groceries segments. Additionally, earnings per share (EPS) for the current period are expected to be at least 125% higher than the 69.3 cents reported for the prior period, reflecting an increase of at least 86.6 cents per share.

RCL | 3.67% OPEN | 1210c HIGH | 1270c LOW | 1210c CLOSE | 1270c TIME | 07:05

### EXPECTED COMPANY REPORTING SCHEDULE

COMPANY	CODE	RELEASE	DATE
Invicta	IVT	Final	26 Jun '24
Nampak	NPK	Interim	28 Jun '24
Sebata	SEB	Final	18 Jul '24
Anglo American Platinum	AMS	Interim	24 Jul '24
Kumba Iron Ore	KIO	Interim	25 Jul '24

### BANK AND OTHER SELECTE PREFERENCE SHARES

COMPANY	CODE	CLOSE	CLEAN YIELD	NEXT LDT (Est.)
Investec Limited	INPR	8500	11.24	Thu, 06 Jun '24
Standard Bank	SBPP	8471	11.15	Thu, 05 Sep '24
Absa	ABSP	74700	11.48	Thu, 12 Sep '24
Capitec	CPIP	10000	9.69	Thu, 19 Sep '24
Steinhoff	SHFF	9734	10.47	Thu, 17 Oct '24
Grindrod	GNDP	8835	12.22	Thu, 19 Sep '24
Netcare	NTCP	7977	11.82	Thu, 31 Oct '24
Discovery	DSBP	9847	11.91	Thu, 19 Sep '24
Invicta	IVTP	11030	13.41	Thu, 27 Jun '24

**LOCAL EQUITIES | JSE MID CAP COMPANIES** (Cents Per Share)

COMPANY	CODE	CLOSE	PREVIOUS	1D%	1M%	YTD%
Aspen Pharmacare Hldgs Ltd	APN	23958	24427	-1.92	5.86	17.73
African Rainbow Min Ltd	ARI	22640	22586	0.24	-1.57	13.20
AVI Ltd	AVI	9479	9624	-1.51	6.51	15.50
Barloworld Ltd	BAW	8938	9012	-0.82	-0.77	13.14
Bidvest Ltd	BVT	28143	28735	-2.06	9.24	11.55
Bytes Technology Grp PLC	BYI	12729	13110	-2.91	-8.89	-11.12
Capital&Counties Prop plc	CCO	3248	3175	2.30	-2.49	-0.06
Clicks Group Ltd	CLS	33865	34078	-0.63	9.26	3.97
Dis-Chem Pharmacies Ltd	DCP	3372	3437	-1.89	-1.06	9.87
Distell Group Hldgs Ltd	DGH	88	90	-2.22	0.00	2.33
Exxaro Resources Ltd	EXX	17604	17578	0.15	-5.41	-13.91
Fortress Real Est INV B	FFB	1635	1654	-1.15	6.38	13.86
Growthpoint Prop Ltd	GRT	1227	1214	1.07	9.95	5.05
Harmony GM Co Ltd	HAR	16652	16315	2.07	-3.90	39.24
Hammerson plc	HMN	660	655	0.76	2.96	-2.94
Investec Ltd	INL	13195	13168	0.21	4.87	5.06
Investec plc	INP	13218	13121	0.74	4.33	4.95
Italtile Ltd	ITE	1108	1154	-3.99	16.63	-1.07
Life Healthc Grp Hldgs Ltd	LHC	1270	1294	-1.85	13.70	-30.87
MultiChoice Group Ltd	MCG	10400	10413	-0.12	-9.96	28.36
Montauk Renewables Inc	MKR	10001	9800	2.05	6.39	-41.85
Mr Price Group Ltd	MRP	20369	21042	-3.20	9.19	29.90
Momentum Met Hldgs Ltd	MTM	2305	2320	-0.65	4.20	5.30
Ninety One Plc	N91	3925	3982	-1.43	-4.10	-8.97
Nedbank Group Ltd	NED	26100	26597	-1.87	8.51	20.70
Northam Platinum Hldgs Ltd	NPH	12985	12274	5.79	-8.46	-7.53
NEPI Rockcastle N.V.	NRP	13209	13100	0.83	0.83	4.52
Netcare Limited	NTC	1278	1320	-3.18	8.77	-10.25
Ninety One Limited	NY1	3874	3863	0.28	-2.66	-9.84
Old Mutual Limited	OMU	1219	1210	0.74	6.00	-6.66
OUTsurance Group Ltd	OUT	4589	4547	0.92	6.45	8.74
Pick n Pay Stores Ltd	PIK	2581	2651	-2.64	7.54	10.92
Pepkor Holdings Ltd	PPH	1950	2003	-2.65	6.21	-0.66
Quilter Plc	QLT	2807	2788	0.68	2.22	15.61
Redefine Properties Ltd	RDF	415	402	3.23	12.47	7.79
Remgro Ltd	REM	14136	14126	0.07	12.01	-13.00
Resilient REIT Limited	RES	4745	4770	-0.52	7.60	7.13
Reinet Investments S.C.A	RNI	47612	46000	3.50	2.31	2.13
Sappi Ltd	SAP	4809	4900	-1.86	-15.76	8.80
Santam Limited	SNT	31635	31505	0.41	4.76	10.39
The Spar Group Ltd	SPP	11540	11596	-0.48	13.48	-2.12
Sirius Real Estate Ltd	SRE	2215	2163	2.40	-1.86	0.00
Tiger Brands Ltd	TBS	20960	21413	-2.12	1.26	4.13
Transaction Capital Ltd	TCP	291	296	-1.69	11.92	-63.53
The Foschini Group Limited	TFG	12537	13074	-4.11	21.25	12.99
Thungela Resources Ltd	TGA	11242	11155	0.78	-19.33	-26.91
Telkom SA SOC Ltd	TKG	2399	2439	-1.64	-5.07	-19.33
Truworths Int Ltd	TRU	9264	9600	-3.50	13.24	24.60
Woolworths Holdings Ltd	WHL	6052	6062	-0.16	-1.21	-16.18
Zeda Limited	ZZD	1205	1180	2.12	0.42	-5.49

**LOCAL EQUITIES | JSE SMALL CAP COMPANIES** (Cents Per Share)

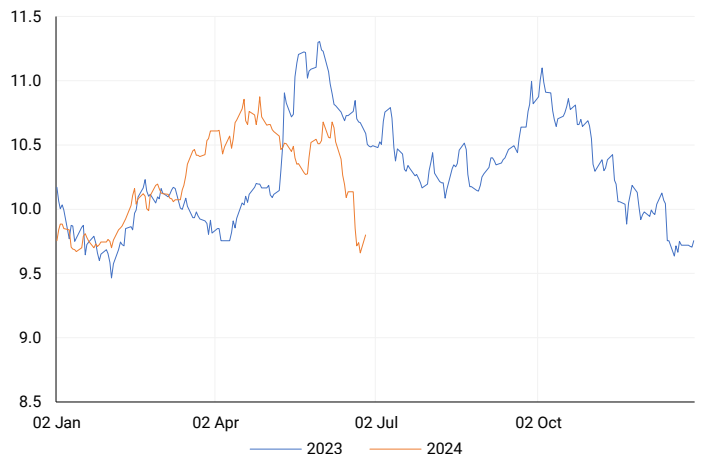
COMPANY	CODE	CLOSE	PREVIOUS	1D%	1M%	YTD%
ArcelorMittal SA Limited	ACL	121	124	-2.42	7.08	-26.22
ADVTECH Ltd	ADH	2801	2844	-1.51	4.63	14.14
Altron Limited A	AEL	1390	1408	-1.28	11.02	35.61
AECI Limited	AFE	10532	10409	1.18	8.13	-3.98
Alexander Forbes Grp Hldgs	AFH	710	716	-0.84	7.58	7.58
Afrimat Limited	AFT	7009	7112	-1.45	1.88	11.25
African Rainbow Cap Inv	AIL	610	610	0.00	8.93	24.74
Adcock Ingram Hldgs Ltd	AIP	6100	6336	-3.72	12.96	1.50
Astral Foods Ltd	ARL	16150	16000	0.94	5.31	10.19
Attacq Limited	ATT	1129	1099	2.73	9.93	22.45
Brait PLC	BAT	87	95	-8.42	-26.89	-52.20
Blue Label Telecoms Ltd	BLU	391	402	-2.74	-9.70	0.77
Coronation Fund Mngrs Ld	CML	3650	3599	1.42	4.98	17.14
Curro Holdings Limited	COH	1124	1149	-2.18	6.95	-3.52
Cashbuild Ltd	CSB	15032	14900	0.89	2.27	-9.95
DRD Gold Ltd	DRD	1606	1620	-0.86	-0.93	1.84
Dataotec Ltd	DTC	3768	3785	-0.45	0.83	-6.96
Emira Property Fund Ltd	EMI	1115	1091	2.20	17.25	30.41
Equites Prop Fund Ltd	EQU	1303	1303	0.00	1.64	-6.59
Famous Brands Ltd	FBR	5200	5262	-1.18	3.77	-10.24
Fairvest Limited B	FTB	384	385	-0.26	-4.48	11.63
Grindrod Ltd	GND	1459	1485	-1.75	4.51	27.31
Hosken Cons Inv Ltd	HCI	17315	17329	-0.08	0.10	-14.54
Hudaco Industries Ltd	HDC	17643	17799	-0.88	4.40	9.84
Hyprop Inv Ltd	HYP	3042	3061	-0.62	5.92	-2.22
Investec Property Fund Ltd	IPF	719	705	1.99	2.13	-10.13
JSE Ltd	JSE	10820	10829	-0.08	17.25	17.05
KAP Industrial Hldgs Ltd	KAP	295	310	-4.84	12.17	12.60
Karooooo Ltd	KRO	63412	59783	6.07	17.87	33.50
PSG Konsult Limited	KST	1691	1707	-0.94	5.89	10.16
Libstar Holdings Ltd	LBR	379	385	-1.56	2.43	8.29
Lighthouse Properties plc	LTE	800	819	-2.32	1.39	8.84
Industrials REIT Limited	MLI	0.5	0.4	25.00	-16.67	-28.57
MAS P.L.C	MSP	1635	1670	-2.10	-3.25	-5.55
Metair Investments Ltd	MTA	1146	1146	0.00	0.97	-35.44
Motus Holdings Ltd	MTH	9337	9470	-1.40	5.22	-8.01
Murray & Roberts Hldgs	MUR	215	214	0.47	22.86	44.30
Oceana Group Ltd	OCE	7480	7460	0.27	2.89	5.84
Omnia Holdings Ltd	OMN	6149	6268	-1.90	10.36	-5.94
Pan African Resource plc	PAN	628	624	0.64	9.22	53.55
PPC Limited	PPC	369	370	-0.27	9.50	-7.52
Raubex Group Ltd	RBX	3918	3960	-1.06	6.47	41.34
RFG Holdings Limited	RFG	1567	1570	-0.19	12.01	16.07
Reunert Ltd	RLO	6931	7007	-1.08	2.12	15.63
SA Corp Real Estate Ltd	SAC	267	260	2.69	4.30	15.09
Super Group Ltd	SPG	2853	2887	-1.18	1.89	-4.10
Stor-Age Prop REIT Ltd	SSS	1405	1371	2.48	6.44	7.58
Southern Sun LTD	SSU	536	530	1.13	-5.96	2.10
Sun International Ltd	SUI	3680	3680	0.00	1.94	-10.24
Tharisa plc	THA	1885	1875	0.53	2.45	24.75
Tsogo Sun Gaming Ltd	TSG	1150	1150	0.00	1.77	-6.12
Vukile Property Fund Ltd	VKE	1577	1595	-1.13	6.41	11.69
Wilson Bayly Hlm-Ovc Ltd	WBO	16144	15700	2.83	8.07	24.13

**10-YEAR BOND YIELD | SELECTED ITEMS** (Basis Point Change)

REGION	YIELD	1D	1M	1Y
United States	4.23%	-2	-24	-
United Kingdom	4.08%	0	-18	-24
Germany	2.42%	1	-17	7
Japan	0.99%	2	-1	-
South African 10Y	10.08%	18	-74	-53

**SOUTH AFRICAN 10-YEAR**

2023 vs 2024 to date

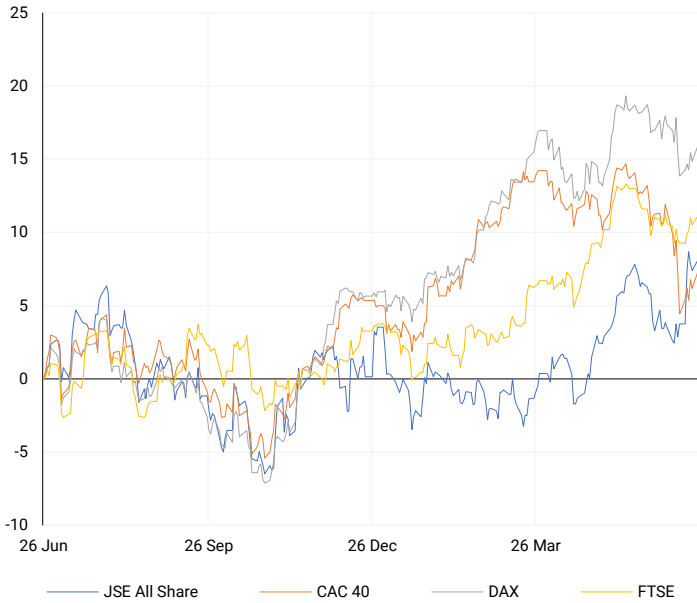


**GLOBAL INTEREST RATES | SELECTED ITEMS**

REGION	DATE CHANGED	CURRENT RATE
United States	26 Jul '23	5.25%-5.50%
United Kingdom	03 Aug '23	5.25%
European	27 Jul '23	4.25%
SA Repo Rate	25 May '23	8.25%
SA Prime Rate	25 May '23	11.75%

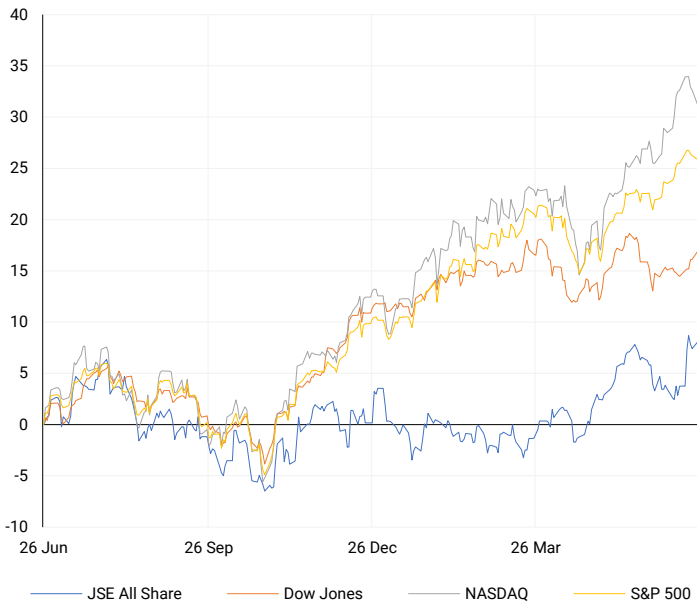
## EUROPEAN INDICES

Normalised percentage performances



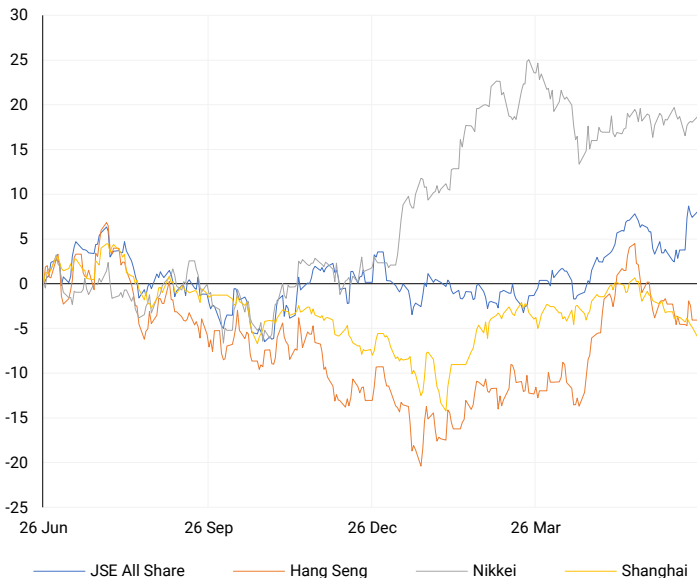
## AMERICAN INDICES

Normalised percentage performances



## ASIAN INDICES

Normalised percentage performances

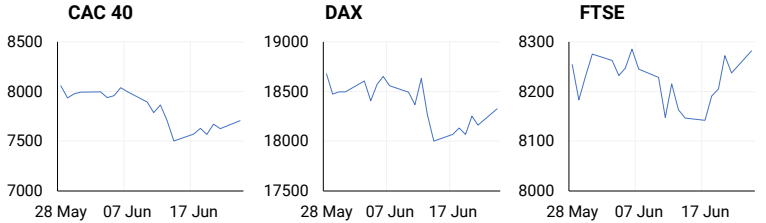


## EUROPEAN MARKET SUMMARY

### SELECTED ITEMS

European stocks closed positively on Monday, with the Stoxx 600 index up 0.8% as investors anticipated new economic data and interest rate decisions. Banks led gains, adding 1.9%, while technology stocks fell by 0.7%. The German DAX index rose by 1%, despite the Ifo Institute's survey indicating a decline in business sentiment for June, reflecting ongoing economic stagnation. This week, market attention is on monetary policy decisions from Sweden and Turkey's central banks, and upcoming GDP data releases from Spain and Italy.

EUROPEAN INDICES	CLOSE	PREVIOUS	1D%	5D%	1M%	YTD%
CAC 40	7706.89	7628.57	1.03	1.79	-4.79	2.17
DAX 30	18325.58	18163.52	0.89	1.42	-1.97	9.40
Eurostoxx 50	4960.20	4896.35	1.30	1.64	-1.51	9.70
FTSE	8281.55	8237.72	0.53	1.71	-0.43	7.09

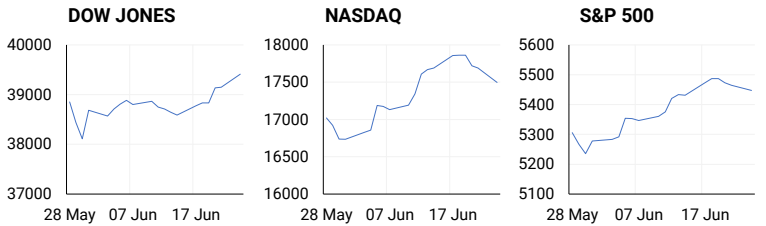


## AMERICAN MARKET SUMMARY

### SELECTED ITEMS

On Monday, the Dow surged to a one-month high while the Nasdaq fell over 1% as investors shifted away from AI-related stocks and added undervalued stocks, anticipating Federal Reserve interest rate cuts this year. The S&P 500 and Nasdaq dropped due to this rotation out of high-performing technology stocks. This week's key event is the PCE price index report on Friday, the Fed's preferred inflation measure, expected to indicate reduced price pressures. Other important data includes durable goods orders, weekly jobless claims, final first-quarter GDP figures, the annual Russell index reconstitution, and some quarterly earnings reports.

AMERICAN INDICES	CLOSE	PREVIOUS	1D%	5D%	1M%	YTD%
Dow Jones	39411.21	39150.33	0.67	1.63	0.87	4.57
Nasdaq	17496.82	17689.36	-1.09	-2.02	3.40	16.56
S&P 500	5447.87	5464.62	-0.31	-0.46	2.70	14.22
US VIX	13.33	13.20	0.98	4.55	11.74	7.07

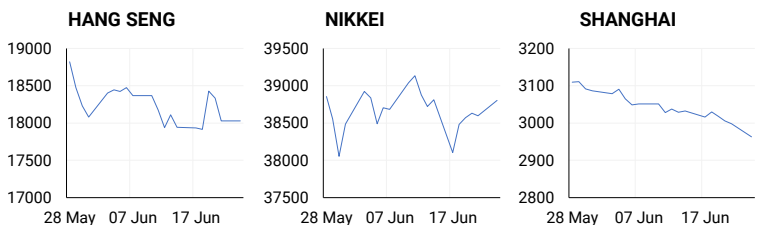


## ASIAN MARKET SUMMARY

### SELECTED ITEMS

Asian shares were subdued this morning, with the yen hitting a record low against the euro but stabilizing against the U.S. dollar due to potential intervention. Chinese stocks saw modest gains, with blue chips rising 0.1% and Hong Kong's Hang Seng index up 0.9%. However, e-commerce sales in China declined for the first time during the recent 618 shopping festival, raising concerns about consumer health.

ASIAN INDICES	CLOSE	PREVIOUS	1D%	5D%	1M%	YTD%
Hang Seng	18027.71	18028.52	0.00	0.51	-3.12	5.75
Nikkei 225	38804.65	38596.47	0.54	1.84	0.41	15.96
Shanghai	2963.10	2998.14	-1.17	-1.75	-4.07	-0.40



## COMMODITIES MARKET SUMMARY

### SELECTED ITEMS

Gold prices dipped this morning as investors awaited key U.S. inflation data, which could provide insights into the timing of potential Federal Reserve interest rate cuts. Meanwhile, oil prices remained stable, with concerns about China's economic recovery balancing out supply worries due to Middle East tensions and Ukrainian attacks on Russian refineries.

COMMODITY	LAST	CLOSE	% CHG	1D%	5D%	YTD%
Brent Crude	86.04	86.10	-0.07	1.22	1.91	11.70
Gold	2327.16	2334.45	-0.31	0.59	0.66	13.16
Palladium	993.50	980.75	1.30	3.07	9.65	-10.62
Platinum	1004.00	999.15	0.49	0.35	2.75	1.21
Silver	29.53	29.57	-0.14	0.10	0.37	24.31

## BRENT CRUDE

One-year



## PLATINUM

One-year



## GOLD

One-year



CURRENCY PAIR	LAST	CLOSE	% CHG	1D%	5D%	YTD%
USDZAR	18.10	18.11	-0.07	0.83	-0.81	-1.18
GBPZAR	22.97	22.97	-0.03	1.10	-0.95	-1.38
EURZAR	19.43	19.44	-0.05	1.17	-0.78	-3.71
AUDZAR	12.05	12.05	0.00	1.00	-0.16	-3.24
EURUSD	1.07	1.07	0.05	0.37	-0.01	-2.76
USDJPY	159.45	159.63	-0.11	-0.10	1.20	13.18
GBPUSD	1.27	1.27	0.06	0.32	-0.15	-0.37
USDCHF	0.89	0.89	-0.12	-0.12	0.39	6.11

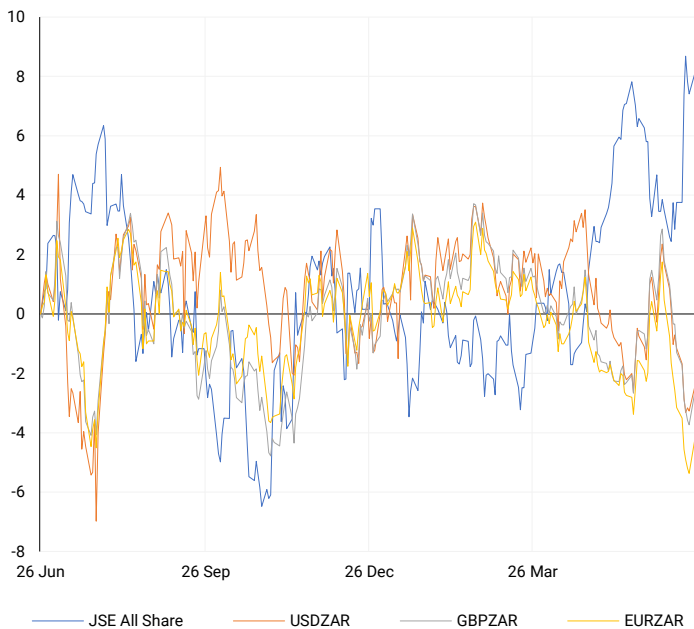
## CURRENCY MARKET SUMMARY

### SELECTED ITEMS

The South African rand slipped on Monday as investors awaited President Cyril Ramaphosa's announcement of his cabinet lineup for the newly formed government of national unity. The U.S. dollar dropped from an eight-week high against the yen on Monday, as traders became wary of potential government intervention to support the Japanese currency, which neared the 160 level that previously prompted action from the Ministry of Finance.

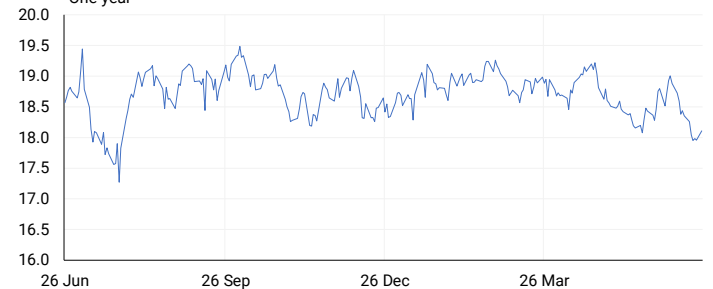
## CURRENCY PAIRS vs JSE ALL SHARE

Normalised percentage performances



## USDZAR

One-year



## EURUSD

One-year



SOURCES | JSE, IRESS, MONEYWEB, CNBC, BBC, CNN

**Disclaimer:** This note is prepared for Sanlam Private Wealth (Pty) Ltd, by K2013143132 (Pty) Ltd trading as ThompsonGreen. ThompsonGreen is an independent company contracted to Sanlam Private Wealth (Pty) Ltd. The views expressed in this note are those of ThompsonGreen and/or its analysts and not necessarily the views of Sanlam Private Wealth (Pty) Ltd, Sanlam or any officer or agent thereof. K2013143132 (Pty) Ltd trading as ThompsonGreen is a research house and not a registered broker, financial adviser or financial service provider. Our editors and customer services teams also do not give personal investment advice. The information in this document is general advice only and may not be appropriate to your particular investment objectives, financial situation or particular needs. Before investing, or if you are in any doubt about your personal situation, you should seek professional advice from a stockbroker or independent financial adviser authorised by the Financial Sector Conduct Authority.