

GLOBAL OVERVIEW | SELECTED INDICES

SOUTH AFRICAN INDICES						
	CLOSE	PREVIOUS	1D%	5D%	1M%	YTD%
All Share	79577.57	80263.14	-0.85	-0.21	0.54	3.49
Top 40	72903.06	73512.36	-0.83	0.05	0.22	3.42
Financial 15	18808.26	18899.74	-0.48	-1.72	9.13	5.23
Industrial 25	108423.20	109739.53	-1.20	-1.36	-1.29	4.54
Resource 10	58662.74	58977.74	-0.53	4.78	-6.26	1.96
Mid Cap	83257.70	84058.14	-0.95	-0.37	2.01	3.54
Small Cap	77169.64	77807.20	-0.82	-0.99	4.17	6.45
Banks	11797.98	11833.59	-0.30	-1.57	10.28	7.76
Retailers	6474.34	6535.90	-0.94	-3.21	7.32	3.86
Property (J253) - TR	2025.06	2055.48	-1.48	-2.64	3.77	8.66

AMERICAN INDICES						
	CLOSE	PREVIOUS	1D%	5D%	1M%	YTD%
Dow Jones	39112.16	39411.21	-0.76	0.71	0.11	3.77
Nasdaq	17717.65	17496.82	1.26	-0.81	4.71	18.03
S&P 500	5469.30	5447.87	0.39	-0.32	3.10	14.66
US VIX	12.84	13.33	-3.68	4.39	7.63	3.13

EUROPEAN INDICES						
	CLOSE	PREVIOUS	1D%	5D%	1M%	YTD%
CAC 40	7662.30	7706.89	-0.58	0.44	-5.34	1.58
DAX 30	18177.62	18325.58	-0.81	0.25	-2.76	8.51
Eurostoxx 50	4935.00	4960.20	-0.51	0.47	-2.01	9.14
FTSE	8247.79	8281.55	-0.41	0.69	-0.84	6.65

ASIAN INDICES						
	CLOSE	PREVIOUS	1D%	5D%	1M%	YTD%
Hang Seng	18072.90	18027.71	0.25	0.88	-2.88	6.02
Nikkei 225	39173.15	38804.65	0.95	1.80	1.36	17.06
Shanghai	2950.00	2963.10	-0.44	-2.65	-4.50	-0.84

EARLY MORNING MARKETS						
	LAST	CLOSE	% CHG	1D%	5D%	YTD%
TENCENT	379.80	382.00	-0.58	0.42	1.33	31.63
BHP AUS	4325.00	4332.00	-0.16	2.10	1.21	-14.06

NOTE : 5D% and 1M% are rolling percentage moves

INTERNATIONAL ECONOMIC CALENDAR | SELECTED EVENTS

TIME	AREA	TODAY'S EVENTS & RELEASES	PERIOD	EXP.	PREV.
16:00	US	New Home Sales	May	0.65M	0.63M
---	---	---	---	---	---
---	---	---	---	---	---
---	---	---	---	---	---
---	---	---	---	---	---

TIME	AREA	PREVIOUS SESSION'S RELEASES	PERIOD	EXP.	ACT.
9:00	ZA	Leading Business Cycle Indicator m/m	Apr	-0.8%	2.4%
16:00	US	CB Consumer Confidence	Jun	99.0	100.4
---	---	---	---	---	---
---	---	---	---	---	---
---	---	---	---	---	---

JSE ALL SHARE | BEST AND WORST ONE-DAY PERFORMERS

BEST ONE-DAY % PERFORMERS						
	CODE	CLOSE	1D%	5D%	YTD%	
African Rainbow Cap Inv	AIL	660	8.20	10.00	34.97	
Alexander Forbes Grp Hldgs	AFH	740	4.23	5.71	12.12	
Transaction Capital Ltd	TCP	300	3.09	4.53	-62.41	
RCL Foods Limited	RCL	1295	1.97	10.21	52.17	
Lighthouse Properties plc	LTE	815	1.88	0.87	10.88	
Compagnie Fin Richemont	CFR	291682	1.79	1.22	13.60	

WORST ONE-DAY % PERFORMERS						
	CODE	CLOSE	1D%	5D%	YTD%	
Attacq Limited	ATT	1054	-6.64	-5.98	14.32	
Sibanye Stillwater Ltd	SSW	2000	-5.44	-1.43	-19.68	
Altron Limited A	AEL	1323	-4.82	0.84	29.07	
Pepkor Holdings Ltd	PPH	1862	-4.51	-4.61	-5.15	
Hammerson plc	HMN	636	-3.64	-1.55	-6.47	

DIVIDEND DATA

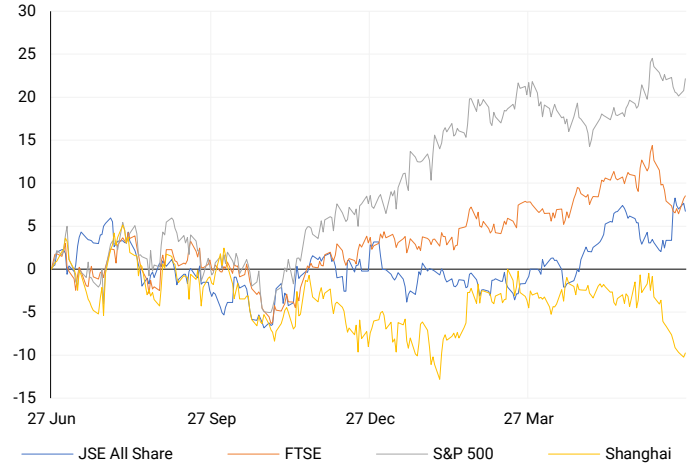
COMPANY	CODE	EXPECTED DIVIDEND	COMPANY	CODE	EXPECTED DIVIDEND
British American Tobacco plc	BTI	58.8 GBPP	Sirius Real Estate	SRE	3.0 EURc
Capital Appreciation	CTA	5.7 ZARc	Sygnia	SYG	90 ZARc
Clicks Group	CLS	210 ZARc	Vukile Property Fund	VKE	72.1 ZARc
Emira Property Fund	EMI	55.2 ZARc	---	---	---
Oceana Group	OCE	195 ZARc	---	---	---

SOURCES | JSE, IRESS, MONEYWEB, CNBC, BBC, CNN

PLEASE SEE THE BOTTOM OF THE LAST PAGE FOR THE FULL DISCLAIMER

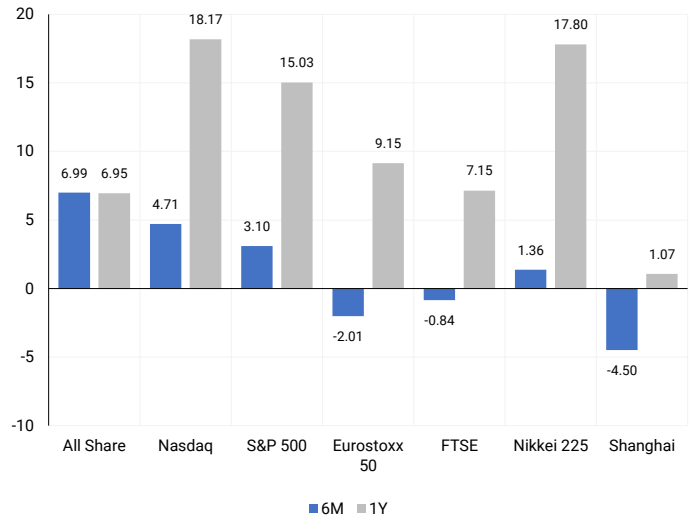
INTERNATIONAL INDICES

Normalised percentage performances - In rand terms



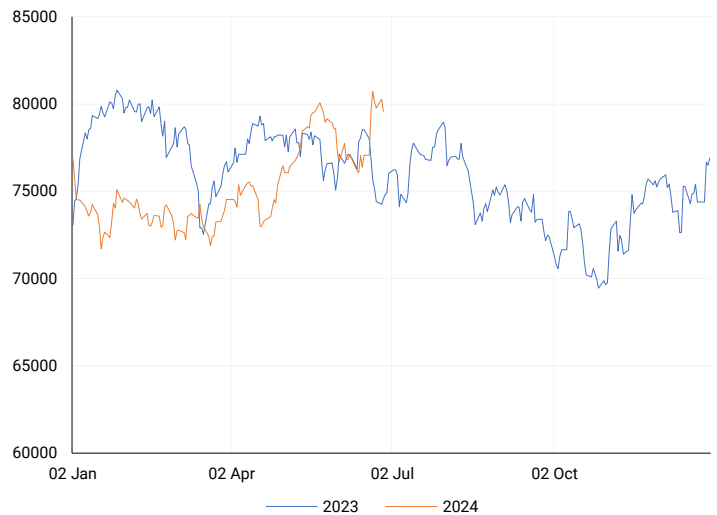
INTERNATIONAL INDICES

6-month & 1-year percentage performances



JSE ALL SHARE INDEX

2023 v 2024 to date



Ex div Wed, 26 June

LOCAL EQUITIES | JSE LARGE CAP COMPANIES (Cents Per Share)

COMPANY	CLOSE	PREVIOUS	1D%	5D%	1M%	YTD%
Absa Group Limited	17204	17419	-1.23	-2.65	11.00	5.09
Anglo American plc	57983	57617	0.64	4.99	-5.83	22.46
Anglo American Plat Ltd	62289	64612	-3.60	5.93	-13.21	-35.38
Anglogold Ashanti Ltd	44387	43858	1.21	7.09	-1.11	25.60
Anheuser-Busch InBev SA NV	108834	110658	-1.65	1.23	-9.39	-9.32
BHP Group Limited	51638	51664	-0.05	1.47	-5.54	-18.48
BID Corporation Ltd	42797	42553	0.57	2.98	3.36	0.31
British American Tob plc	58105	58500	-0.68	4.84	3.34	7.30
Compagnie Fin Richemont	291682	286542	1.79	1.22	1.29	13.60
Capitec Bank Hldgs Ltd	257196	256900	0.12	-0.67	13.52	26.93
Discovery Ltd	13571	13454	0.87	2.06	15.31	-5.55
Firststrand Ltd	7487	7465	0.29	-1.81	9.54	1.85
Gold Fields Ltd	27048	27229	-0.66	7.53	-8.44	-2.63
Glencore plc	10474	10610	-1.28	0.45	-7.62	-6.19
Impala Platinum Hlgs Ltd	9104	9440	-3.56	4.02	-13.93	-0.25
Kumba Iron Ore Ltd	44535	45401	-1.91	-3.83	-15.95	-27.56
Mondi plc	34299	34512	-0.62	1.40	-8.41	-5.51
MTN Group Ltd	8453	8528	-0.88	-1.54	-1.80	-26.81
Naspers Ltd -N-	356462	368448	-3.25	-4.86	-8.64	13.96
Prosus N.V.	65540	67001	-2.18	-0.68	-5.16	16.95
South32 Limited	4441	4491	-1.11	1.42	-6.60	5.26
Standard Bank Group Ltd	21067	21200	-0.63	-0.83	11.68	1.23
Shoprite Holdings Ltd	28296	27941	1.27	-1.01	6.73	2.88
Sanlam Limited	7896	7964	-0.85	-5.18	7.44	8.46
Sasol Limited	13606	13850	-1.76	6.28	3.47	-26.57
Sibanye Stillwater Ltd	2000	2115	-5.44	-1.43	-15.97	-19.68
Vodacom Group Ltd	9560	9761	-2.06	-2.45	-0.22	-9.81

SOUTH AFRICAN MARKET SUMMARY

SELECTED ITEMS

On the Johannesburg Stock Exchange, the blue-chip Top-40 index was down around 0.7%. Financial markets are anxiously awaiting the composition of President Ramaphosa's new cabinet, which will signal how the African National Congress plans to share power with the Democratic Alliance. Meanwhile, Brait, the JSE-listed investment holding group owning Virgin Active and Premier Group, reported a R171 million loss for the year ending 31 March 2024.

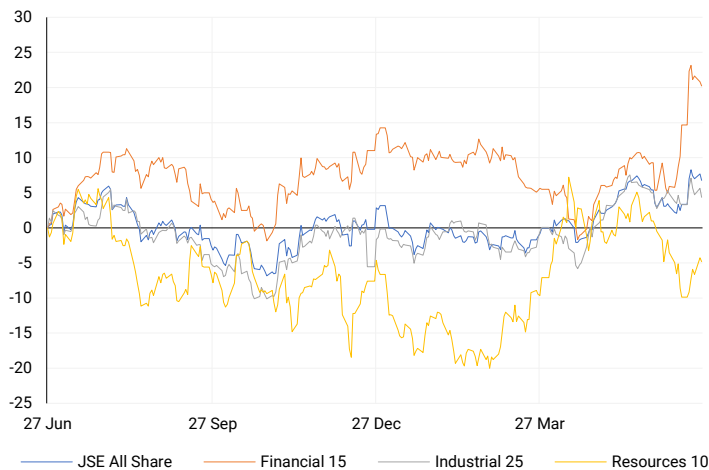
JSE ALL SHARE

One-year



LOCAL INDICES

Normalised percentage performances



LOCAL SENS ANNOUNCEMENTS

SELECTED RELEASE

RECM & CALIBRE LIMITED – Audited annual financial results

The financial results for the year ending 31 March 2024 show a decline compared to the previous year ending 31 March 2023. Net asset value per share decreased to R14.15 from R14.66. Headline and basic earnings per share fell to a loss of 51 cents from earnings of 62 cents. Income dropped significantly to R1 548 259 from R22 203 298, and net profit before tax turned into a loss of R25 546 495 from a profit of R31 179 323. No cash dividend was declared for either period.

RACP | 0.00% OPEN | 800c HIGH | 800c LOW | 800c CLOSE | 800c TIME | 17:06

BRAIT PLC – Audited financial results

Virgin Active saw significant membership and revenue growth, boosting its annualized EBITDA to £80 million. Premier's EBITDA rose 19% to R2.1 billion, driven by strong operational performance and investments, leading to a lower leverage ratio and a maiden dividend of R2.20 per share. New Look maintained profitability despite a tough UK retail market. Brait secured a recapitalization deal to reduce debt and extend bond maturities, with a slight drop in NAV per share to R6.52 and available cash of R1.5 billion.

BAT | -1.15% OPEN | 90c HIGH | 91c LOW | 86c CLOSE | 86c TIME | 07:30

EXPECTED COMPANY REPORTING SCHEDULE

COMPANY	CODE	RELEASE	DATE
Invicta	IVT	Final	26 Jun '24
Nampak	NPK	Interim	28 Jun '24
Sebata	SEB	Final	18 Jul '24
Anglo American Platinum	AMS	Interim	24 Jul '24
Kumba Iron Ore	KIO	Interim	25 Jul '24

BANK AND OTHER SELECTE PREFERENCE SHARES

COMPANY	CODE	CLOSE	CLEAN YIELD	NEXT LDT (Est.)
Investec Limited	INPR	8538	11.24	Thu, 06 Jun '24
Standard Bank	SBPP	8504	11.15	Thu, 05 Sep '24
Absa	ABSP	74185	11.48	Thu, 12 Sep '24
Capitec	CPIP	10000	9.69	Thu, 19 Sep '24
Steinhoff	SHFF	9734	10.47	Thu, 17 Oct '24
Grindrod	GNDP	9292	12.22	Thu, 19 Sep '24
Netcare	NTCP	7969	11.82	Thu, 31 Oct '24
Discovery	DSBP	9601	11.91	Thu, 19 Sep '24
Invicta	IVTP	11100	13.41	Thu, 27 Jun '24

LOCAL EQUITIES | JSE MID CAP COMPANIES (Cents Per Share)

COMPANY	CODE	CLOSE	PREVIOUS	1D%	1M%	YTD%
Aspen Pharmacare Hldgs Ltd	APN	24080	23958	0.51	6.40	18.33
African Rainbow Min Ltd	ARI	22445	22640	-0.86	-2.41	12.23
AVI Ltd	AVI	9471	9479	-0.08	6.42	15.40
Barloworld Ltd	BAW	8847	8938	-1.02	-1.78	11.99
Bidvest Ltd	BVT	27883	28143	-0.92	8.23	10.52
Bytes Technology Grp PLC	BYI	12677	12729	-0.41	-9.26	-11.48
Capital&Counties Prop plc	CCO	3217	3248	-0.95	-3.42	-1.02
Clicks Group Ltd	CLS	33776	33865	-0.26	8.97	3.70
Dis-Chem Pharmacies Ltd	DCP	3325	3372	-1.39	-2.44	8.34
Distell Group Hldgs Ltd	DGH	88	88	0.00	0.00	2.33
Exxaro Resources Ltd	EXX	17308	17604	-1.68	-7.00	-15.36
Fortress Real Est INV B	FFB	1614	1635	-1.28	5.01	12.40
Growthpoint Prop Ltd	GRT	1213	1227	-1.14	8.69	3.85
Harmony GM Co Ltd	HAR	16904	16652	1.51	-2.45	41.35
Hammerson plc	HMM	636	660	-3.64	-0.78	-6.47
Investec Ltd	INL	13197	13195	0.02	4.89	5.08
Investec plc	INP	13198	13218	-0.15	4.17	4.79
Italtile Ltd	ITE	1116	1108	0.72	17.47	-0.36
Life Healthc Grp Hldgs Ltd	LHC	1234	1270	-2.83	10.47	-32.83
MultiChoice Group Ltd	MCG	10439	10400	0.38	-9.62	28.84
Montauk Renewables Inc	MKR	9984	10001	-0.17	6.21	-41.95
Mr Price Group Ltd	MRP	20300	20369	-0.34	8.82	29.46
Momentum Met Hldgs Ltd	MTM	2292	2305	-0.56	3.62	4.71
Ninety One Plc	N91	3871	3925	-1.38	-5.42	-10.23
Nedbank Group Ltd	NED	25785	26100	-1.21	7.20	19.25
Northam Platinum Hldgs Ltd	NPH	12848	12985	-1.06	-9.43	-8.51
NEPI Rockcastle N.V.	NRP	13065	13209	-1.09	-0.27	3.38
Netcare Limited	NTC	1270	1278	-0.63	8.09	-10.81
Ninety One Limited	NY1	3821	3874	-1.37	-3.99	-11.08
Old Mutual Limited	OMU	1197	1219	-1.80	4.09	-8.35
OUTsurance Group Ltd	OUT	4619	4589	0.65	7.14	9.45
Pick n Pay Stores Ltd	PIK	2492	2581	-3.45	3.83	7.09
Pepkor Holdings Ltd	PPH	1862	1950	-4.51	1.42	-5.15
Quilter Plc	QLT	2770	2807	-1.32	0.87	14.09
Redefine Properties Ltd	RDF	400	415	-3.61	8.40	3.90
Remgro Ltd	REM	14000	14136	-0.96	10.94	-13.84
Resilient REIT Limited	RES	4690	4745	-1.16	6.35	5.89
Reinet Investments S.C.A	RNI	46990	47612	-1.31	0.98	0.79
Sappi Ltd	SAP	4785	4809	-0.50	-16.18	8.26
Santam Limited	SNT	31342	31635	-0.93	3.78	9.37
The Spar Group Ltd	SPP	11606	11540	0.57	14.13	-1.56
Sirius Real Estate Ltd	SRE	2205	2215	-0.45	-2.30	-0.45
Tiger Brands Ltd	TBS	20550	20960	-1.96	-0.72	2.09
Transaction Capital Ltd	TCP	300	291	3.09	15.38	-62.41
The Foschini Group Limited	TFG	12606	12537	0.55	21.91	13.61
Thungela Resources Ltd	TGA	11022	11242	-1.96	-20.90	-28.34
Telkom SA SOC Ltd	TKG	2411	2399	0.50	-4.59	-18.93
Truworths Int Ltd	TRU	9188	9264	-0.82	12.31	23.58
Woolworths Holdings Ltd	WHL	6019	6052	-0.55	-1.75	-16.63
Zeda Limited	ZZD	1196	1205	-0.75	-0.33	-6.20

LOCAL EQUITIES | JSE SMALL CAP COMPANIES (Cents Per Share)

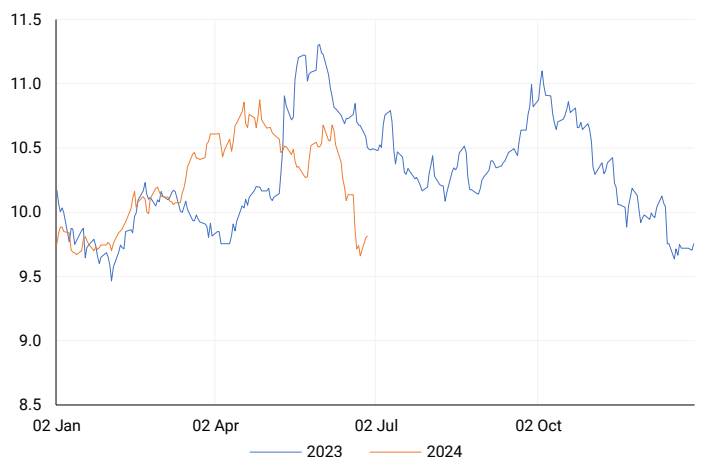
COMPANY	CODE	CLOSE	PREVIOUS	1D%	1M%	YTD%
ArcelorMittal SA Limited	ACL	125	121	3.31	10.62	-23.78
ADVTECH Ltd	ADH	2770	2801	-1.11	3.47	12.88
Altron Limited A	AEL	1323	1390	-4.82	5.67	29.07
AECI Limited	AFE	10639	10532	1.02	9.23	-3.01
Alexander Forbes Grp Hldgs	AFH	740	710	4.23	12.12	12.12
Afrimat Limited	AFT	7018	7009	0.13	2.01	11.40
African Rainbow Cap Inv	AIL	660	610	8.20	17.86	34.97
Adcock Ingram Hldgs Ltd	AIP	5922	6100	-2.92	9.67	-1.46
Astral Foods Ltd	ARL	16131	16150	-0.12	5.19	10.06
Attacq Limited	ATT	1054	1129	-6.64	2.63	14.32
Brait PLC	BAT	86	87	-1.15	-27.73	-52.75
Blue Label Telecoms Ltd	BLU	391	391	0.00	-9.70	0.77
Coronation Fund Mngrs Ld	CML	3628	3650	-0.60	4.34	16.43
Curro Holdings Limited	COH	1113	1124	-0.98	5.90	-4.46
Cashbuild Ltd	CSB	15000	15032	-0.21	2.05	-10.14
DRD Gold Ltd	DRD	1610	1606	0.25	-0.68	2.09
Datatec Ltd	DTC	3751	3768	-0.45	0.37	-7.38
Emira Property Fund Ltd	EMI	1116	1115	0.09	17.35	30.53
Equites Prop Fund Ltd	EQU	1268	1303	-2.69	-1.09	-9.10
Famous Brands Ltd	FBR	5123	5200	-1.48	2.24	-11.57
Fairvest Limited B	FTB	386	384	0.52	-3.98	12.21
Grindrod Ltd	GND	1446	1459	-0.89	3.58	26.18
Hosken Cons Inv Ltd	HCI	17284	17315	-0.18	-0.08	-14.69
Hudaco Industries Ltd	HDC	17790	17643	0.83	5.27	10.75
Hyprop Inv Ltd	HYP	3030	3042	-0.39	5.50	-2.60
Investec Property Fund Ltd	IPF	698	719	-2.92	-0.85	-12.75
JSE Ltd	JSE	10772	10820	-0.44	16.73	16.53
KAP Industrial Hldgs Ltd	KAP	290	295	-1.69	10.27	10.69
Karooooo Ltd	KRO	61450	63412	-3.09	14.22	29.37
PSG Konsult Limited	KST	1690	1691	-0.06	5.82	10.10
Libstar Holdings Ltd	LBR	385	379	1.58	4.05	10.00
Lighthouse Properties plc	LTE	815	800	1.88	3.30	10.88
Industrials REIT Limited	MLI	0.5	0.5	0.00	-16.67	-28.57
MAS P.L.C	MSP	1616	1635	-1.16	-4.38	-6.64
Metair Investments Ltd	MTA	1132	1146	-1.22	-0.26	-36.23
Motus Holdings Ltd	MTH	9397	9337	0.64	5.89	-7.42
Murray & Roberts Hldgs	MUR	217	215	0.93	24.00	45.64
Oceana Group Ltd	OCE	7400	7480	-1.07	1.79	4.71
Omnia Holdings Ltd	OMN	6127	6149	-0.36	9.96	-6.27
Pan African Resource plc	PAN	614	628	-2.23	6.78	50.12
PPC Limited	PPC	369	369	0.00	9.50	-7.52
Raubex Group Ltd	RBX	3977	3918	1.51	8.07	43.47
RFG Holdings Limited	RFG	1524	1567	-2.74	8.93	12.89
Reunert Ltd	RLO	6955	6931	0.35	2.48	16.03
SA Corp Real Estate Ltd	SAC	263	267	-1.50	2.73	13.36
Super Group Ltd	SPG	2824	2853	-1.02	0.86	-5.08
Stor-Age Prop REIT Ltd	SSS	1409	1405	0.28	6.74	7.89
Southern Sun LTD	SSU	530	536	-1.12	-7.02	0.95
Sun International Ltd	SUI	3603	3680	-2.09	-0.19	-12.12
Tharisa plc	THA	1821	1885	-3.40	-1.03	20.52
Tsogo Sun Gaming Ltd	TSG	1150	1150	0.00	1.77	-6.12
Vukile Property Fund Ltd	VKE	1549	1577	-1.78	4.52	9.70
Wilson Bayly Hlm-Ovc Ltd	WBO	15930	16144	-1.33	6.64	22.48

10-YEAR BOND YIELD | SELECTED ITEMS (Basis Point Change)

REGION	YIELD	1D	1M	1Y
United States	4.26%	3	-21	—
United Kingdom	4.08%	0	-18	-24
Germany	2.41%	-1	-17	6
Japan	0.99%	2	0	—
South African 10Y	10.08%	0	-74	-53

SOUTH AFRICAN 10-YEAR

2023 vs 2024 to date

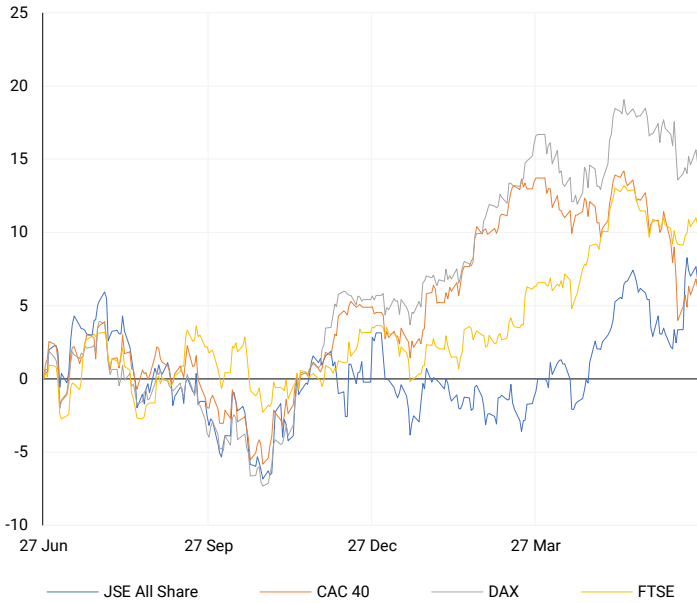


GLOBAL INTEREST RATES | SELECTED ITEMS

REGION	DATE CHANGED	CURRENT RATE
United States	Wed, 26 Jul '23	5.25%-5.50%
United Kingdom	Thu, 03 Aug '23	5.25%
European	Thu, 27 Jul '23	4.25%
SA Repo Rate	Thu, 25 May '23	8.25%
SA Prime Rate	Thu, 25 May '23	11.75%

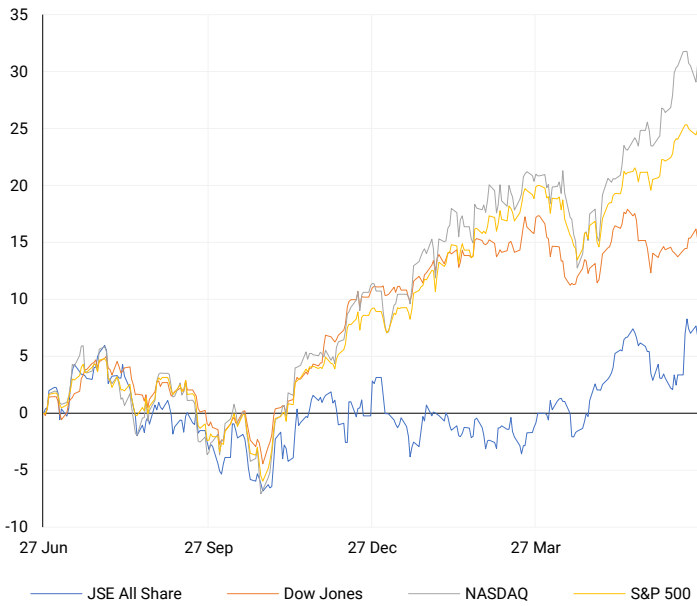
EUROPEAN INDICES

Normalised percentage performances



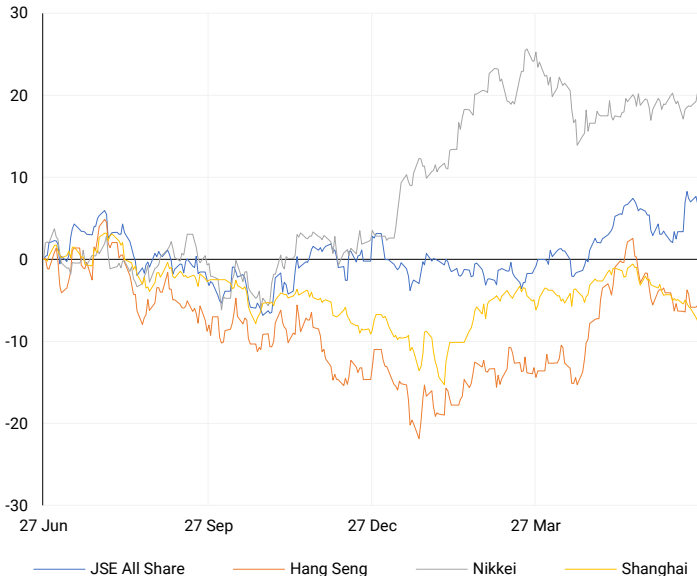
AMERICAN INDICES

Normalised percentage performances



ASIAN INDICES

Normalised percentage performances

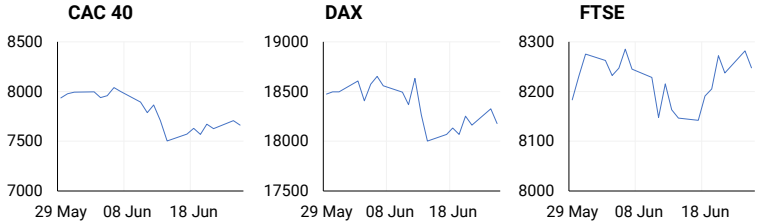


EUROPEAN MARKET SUMMARY

SELECTED ITEMS

European shares fell on Tuesday, led by a sharp drop in Airbus after a profit warning triggered a sell-off in aerospace stocks. The pan-European Stoxx 600 index closed 0.3% lower, with industrial stocks down 1.7% and healthcare up 0.8%. The euro weakened by 0.23% against the U.S. dollar due to political uncertainty ahead of the French parliamentary elections and an upcoming U.S. inflation report.

EUROPEAN INDICES	CLOSE	PREVIOUS	1D%	5D%	1M%	YTD%
CAC 40	7662.30	7706.89	-0.58	0.44	-5.34	1.58
DAX 30	18177.62	18325.58	-0.81	0.25	-2.76	8.51
Eurostoxx 50	4935.00	4960.20	-0.51	0.47	-2.01	9.14
FTSE	8247.79	8281.55	-0.41	0.69	-0.84	6.65

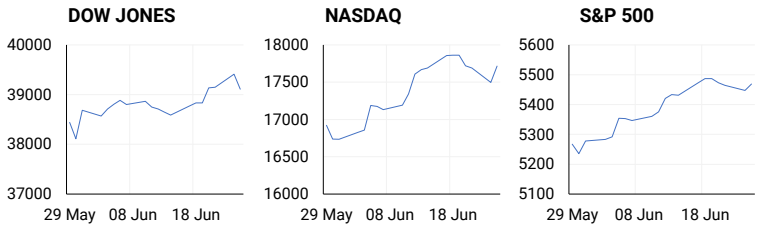


AMERICAN MARKET SUMMARY

SELECTED ITEMS

A rebound in Nvidia helped boost a weakened Wall Street on Tuesday. The S&P 500 rose 0.4%, approaching its all-time high from a week ago, while the Nasdaq composite jumped 1.3%, marking its first gain in four days. This strength occurred despite most stocks outside the AI sector declining. Additionally, a report showed that U.S. consumer confidence fell in June, though not as much as economists had anticipated.

AMERICAN INDICES	CLOSE	PREVIOUS	1D%	5D%	1M%	YTD%
Dow Jones	39112.16	39411.21	-0.76	0.71	0.11	3.77
Nasdaq	17717.65	17496.82	1.26	-0.81	4.71	18.03
S&P 500	5469.30	5447.87	0.39	-0.32	3.10	14.66
US VIX	12.84	13.33	-3.68	4.39	7.63	3.13

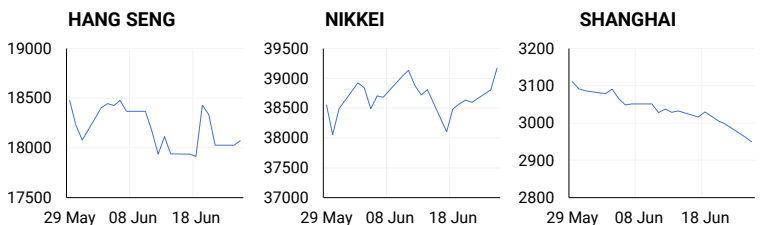


ASIAN MARKET SUMMARY

SELECTED ITEMS

Asian stocks experienced a turbulent start this morning, with Japan's Nikkei and Taiwan stocks surging, driven by gains in chipmakers. In contrast, Chinese stocks declined, with the blue-chip CSI300 Index and the Shanghai Composite Index both falling 0.2%, contributing to a 4% decline for the month. Hong Kong's Hang Seng index also dropped by 0.16%.

ASIAN INDICES	CLOSE	PREVIOUS	1D%	5D%	1M%	YTD%
Hang Seng	18072.90	18027.71	0.25	0.88	-2.88	6.02
Nikkei 225	39173.15	38804.65	0.95	1.80	1.36	17.06
Shanghai	2950.00	2963.10	-0.44	-2.65	-4.50	-0.84



COMMODITIES MARKET SUMMARY

SELECTED ITEMS

Gold prices remained steady this morning as the dollar and Treasury yields stayed firm ahead of a crucial inflation report later this week, which could offer insights into the Federal Reserve's interest rate plans. Meanwhile, oil prices dropped in early Asian trade after an industry group reported an unexpected rise in U.S. stockpiles, raising concerns about weaker-than-expected demand in the world's largest oil-consuming nation.

COMMODITY	LAST	CLOSE	% CHG	1D%	5D%	YTD%
Brent Crude	85.41	84.90	0.60	-1.39	-0.59	10.15
Gold	2316.49	2319.58	-0.13	-0.64	-0.42	12.44
Palladium	944.19	950.74	-0.69	-3.06	6.52	-13.35
Platinum	991.33	986.70	0.47	-1.25	0.94	-0.06
Silver	28.95	28.90	0.17	-2.27	-2.17	21.49

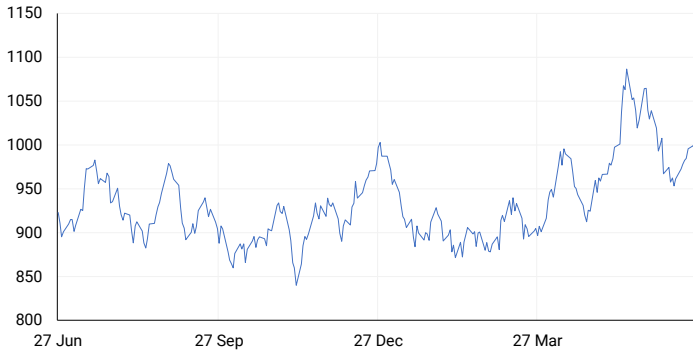
BRENT CRUDE

One-year



PLATINUM

One-year



GOLD

One-year



CURRENCY PAIR	LAST	CLOSE	% CHG	1D%	5D%	YTD%
USDZAR	18.24	18.24	-0.05	0.74	1.12	-0.44
GBPZAR	23.13	23.14	-0.03	0.72	0.95	-0.67
EURZAR	19.53	19.54	-0.10	0.54	0.85	-3.19
AUDZAR	12.19	12.13	0.52	0.59	0.98	-2.67
EURUSD	1.07	1.07	-0.05	-0.18	-0.24	-2.93
USDJPY	159.78	159.68	0.07	0.03	1.15	13.22
GBPUSD	1.27	1.27	-0.01	0.01	-0.18	-0.36
USDCHF	0.90	0.89	0.05	0.19	1.21	6.32

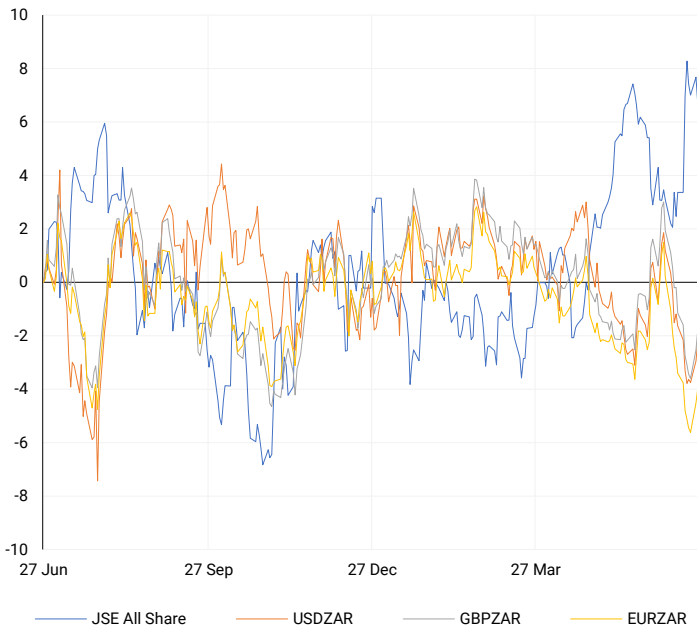
CURRENCY MARKET SUMMARY

SELECTED ITEMS

The South African rand regained some ground in early trade on Tuesday after local media reported progress in negotiations over cabinet positions between the two largest parties in the unity government. The dollar remained strong this morning, hovering near the 160 yen mark as investors grew cautious and awaited the release of U.S. inflation data later in the week.

CURRENCY PAIRS vs JSE ALL SHARE

Normalised percentage performances



USDZAR

One-year



EURUSD

One-year



SOURCES | JSE, IRESS, MONEYWEB, CNBC, BBC, CNN

Disclaimer: This note is prepared for Sanlam Private Wealth (Pty) Ltd, by K2013143132 (Pty) Ltd trading as ThompsonGreen. ThompsonGreen is an independent company contracted to Sanlam Private Wealth (Pty) Ltd. The views expressed in this note are those of ThompsonGreen and/or its analysts and not necessarily the views of Sanlam Private Wealth (Pty) Ltd, Sanlam or any officer or agent thereof. K2013143132 (Pty) Ltd trading as ThompsonGreen is a research house and not a registered broker, financial adviser or financial service provider. Our editors and customer services teams also do not give personal investment advice. The information in this document is general advice only and may not be appropriate to your particular investment objectives, financial situation or particular needs. Before investing, or if you are in any doubt about your personal situation, you should seek professional advice from a stockbroker or independent financial adviser authorised by the Financial Sector Conduct Authority.