

GLOBAL OVERVIEW | SELECTED INDICES

SOUTH AFRICAN INDICES						
	CLOSE	PREVIOUS	1D%	5D%	1M%	YTD%
All Share	79252.39	79577.57	-0.41	-1.81	0.13	3.07
Top 40	72563.55	72903.06	-0.47	-1.67	-0.25	2.93
Financial 15	18661.49	18808.26	-0.78	-3.13	8.28	4.41
Industrial 25	107823.85	108423.20	-0.55	-3.06	-1.83	3.96
Resource 10	58786.65	58662.74	0.21	2.90	-6.06	2.18
Mid Cap	82397.46	83257.70	-1.03	-2.46	0.96	2.47
Small Cap	77432.97	77169.64	0.34	-2.27	4.52	6.81
Banks	11695.82	11797.98	-0.87	-3.00	9.32	6.83
Retailers	6500.86	6474.34	0.41	-3.22	7.76	4.29
Property (J253) - TR	2039.99	2025.06	0.74	-4.80	4.53	9.46
AMERICAN INDICES						
	CLOSE	PREVIOUS	1D%	5D%	1M%	YTD%
Dow Jones	39127.80	39112.16	0.04	0.75	0.15	3.82
Nasdaq	17805.16	17717.65	0.49	-0.32	5.23	18.61
S&P 500	5477.90	5469.30	0.16	-0.17	3.26	14.84
US VIX	12.55	12.84	-2.26	0.56	5.20	0.80
EUROPEAN INDICES						
	CLOSE	PREVIOUS	1D%	5D%	1M%	YTD%
CAC 40	7609.15	7662.30	-0.69	0.51	-6.00	0.87
DAX 30	18155.24	18177.62	-0.12	0.48	-2.88	8.38
Eurostoxx 50	4916.90	4935.00	-0.37	0.70	-2.37	8.74
FTSE	8225.33	8247.79	-0.27	0.25	-1.11	6.36
ASIAN INDICES						
	CLOSE	PREVIOUS	1D%	5D%	1M%	YTD%
Hang Seng	18089.93	18072.90	0.09	-1.85	-2.79	6.12
Nikkei 225	39667.07	39173.15	1.26	2.84	2.64	18.54
Shanghai	2972.53	2950.00	0.76	-1.51	-3.77	-0.08
EARLY MORNING MARKETS						
	LAST	CLOSE	% CHG	1D%	5D%	YTD%
TENCENT	376.40	382.00	-1.47	0.00	-1.80	31.63
BHP AUS	4307.00	4334.00	-0.62	0.05	1.40	-14.02

NOTE : 5D% and 1M% are rolling percentage moves

INTERNATIONAL ECONOMIC CALENDAR | SELECTED EVENTS

TIME	AREA	TODAY'S EVENTS & RELEASES	PERIOD	EXP.	PREV.
10:00	ZA	Consumer Confidence	Q2	-18.0	-15.0
11:30	ZA	PPI m/m	May	0.2%	0.5%
14:30	US	GDP Growth Rate q/q Final	Q1	1.3%	3.4%
14:30	US	Unemployment Claims	Jun	239K	238K
16:00	US	Pending Home Sales m/m	May	2.3%	-7.7%
TIME	AREA	PREVIOUS SESSION'S RELEASES	PERIOD	EXP.	ACT.
16:00	US	New Home Sales	May	0.65M	0.62M
---	---	---	---	---	---
---	---	---	---	---	---
---	---	---	---	---	---
---	---	---	---	---	---

JSE ALL SHARE | BEST AND WORST ONE-DAY PERFORMERS

BEST ONE-DAY % PERFORMERS						
	CODE	CLOSE	1D%	5D%	YTD%	
Brait PLC	BAT	96	11.63	6.67	-47.25	
Altron Limited A	AEL	1405	6.20	4.93	37.07	
Cashbuild Ltd	CSB	15701	4.67	-1.87	-5.94	
Hyprop Inv Ltd	HYP	3152	4.03	-5.29	1.32	
Attacq Limited	ATT	1093	3.70	-5.37	18.55	
Omnia Holdings Ltd	OMN	6352	3.67	1.89	-2.83	
WORST ONE-DAY % PERFORMERS						
	CODE	CLOSE	1D%	5D%	YTD%	
RCL Foods Limited	RCL	1101	-14.98	-8.25	29.38	
PPC Limited	PPC	342	-7.32	-6.30	-14.29	
Transaction Capital Ltd	TCP	285	-5.00	-5.32	-64.29	
Aspen Pharmacare Hldgs Ltd	APN	22919	-4.82	-5.97	12.62	
Tsogo Sun Limited	TSG	1109	-3.57	-5.78	-9.47	

DIVIDEND DATA

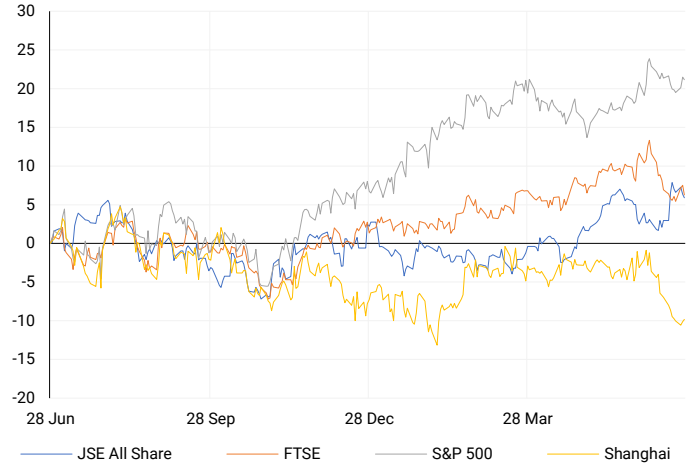
COMPANY	CODE	EXPECTED DIVIDEND	COMPANY	CODE	EXPECTED DIVIDEND
Mr Price Group	MPR	58.8 GBPP	---	---	---
Tiger Brands	TBS	5.7 ZARC	---	---	---
Invicta Holdings	IVTP	210 ZARC	---	---	---
Novus Holdings	NVS	55.2 ZARC	---	---	---
Stor-Age Property REIT	SSS	195 ZARC	---	---	---

SOURCES | JSE, IRESS, MONEYWEB, CNBC, BBC, CNN

PLEASE SEE THE BOTTOM OF THE LAST PAGE FOR THE FULL DISCLAIMER

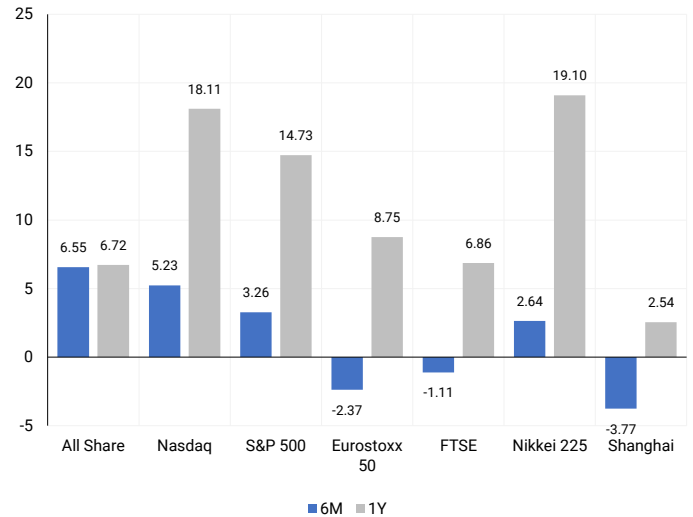
INTERNATIONAL INDICES

Normalised percentage performances - In rand terms



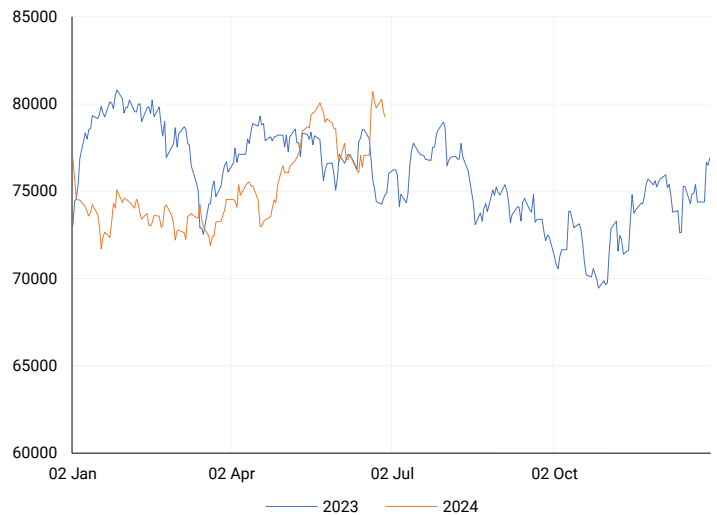
INTERNATIONAL INDICES

6-month & 1-year percentage performances



JSE ALL SHARE INDEX

2023 v 2024 to date



Last date to trade Tue, 02 July

LOCAL EQUITIES | JSE LARGE CAP COMPANIES (Cents Per Share)

COMPANY	CLOSE	PREVIOUS	1D%	5D%	1M%	YTD%
Absa Group Limited	16999	17204	-1.19	-7.31	9.68	3.84
Anglo American plc	58370	57983	0.67	4.98	-5.20	23.28
Anglo American Plat Ltd	61411	62289	-1.41	2.31	-14.44	-36.30
Anglogold Ashanti Ltd	45020	44387	1.43	5.17	0.30	27.39
Anheuser-Busch InBev SA NV	108312	108834	-0.48	1.13	-9.82	-9.75
BHP Group Limited	52294	51638	1.27	2.69	-4.34	-17.44
BID Corporation Ltd	43121	42797	0.76	0.87	4.14	1.07
British American Tob plc	56350	58105	-3.02	1.20	0.22	4.06
Compagnie Fin Richemont	289302	291682	-0.82	1.08	0.47	12.67
Capitec Bank Hldgs Ltd	256340	257196	-0.33	-1.28	13.14	26.50
Discovery Ltd	13330	13571	-1.78	-1.77	13.26	-7.22
Firststrand Ltd	7481	7487	-0.08	-1.54	9.45	1.77
Gold Fields Ltd	27167	27048	0.44	3.70	-8.04	-2.20
Glencore plc	10504	10474	0.29	0.23	-7.36	-5.92
Impala Platinum Hlgs Ltd	9123	9104	0.21	0.78	-13.75	-0.04
Kumba Iron Ore Ltd	43663	44535	-1.96	-7.18	-17.60	-28.98
Mondi plc	34094	34299	-0.60	0.74	-8.96	-6.08
MTN Group Ltd	8229	8453	-2.65	-6.49	-4.40	-28.75
Naspers Ltd -N-	358182	356462	0.48	-5.61	-8.20	14.51
Prosus N.V.	65940	65540	0.61	-0.99	-4.58	17.67
South32 Limited	4438	4441	-0.07	0.91	-6.67	5.19
Standard Bank Group Ltd	20696	21067	-1.76	-3.31	9.72	-0.55
Shoprite Holdings Ltd	28220	28296	-0.27	-3.47	6.44	2.60
Sanlam Limited	8020	7896	1.57	-3.69	9.13	10.16
Sasol Limited	13539	13606	-0.49	2.85	2.96	-26.93
Sibanye Stillwater Ltd	1957	2000	-2.15	-3.26	-17.77	-21.41
Vodacom Group Ltd	9350	9560	-2.20	-7.26	-2.41	-11.79

SOUTH AFRICAN MARKET SUMMARY

SELECTED ITEMS

The Top-40 index on the stock market closed 0.5% lower as financial markets anxiously awaited the announcement of President Cyril Ramaphosa's new cabinet, following an agreement by 10 political parties to form a government of national unity (GNU). Markets are particularly focused on key portfolios such as finance, trade, industry and competition, and small business development. Officials from the ANC and DA indicated the announcement could come on Wednesday or Thursday, with Thursday now seeming more likely.

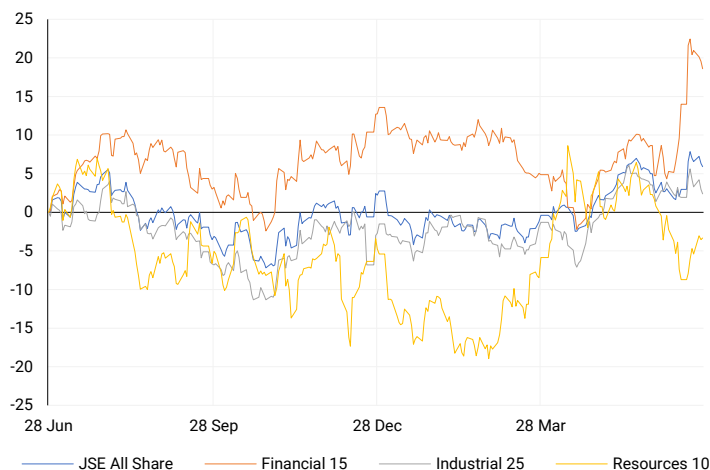
JSE ALL SHARE

One-year



LOCAL INDICES

Normalised percentage performances



LOCAL SENS ANNOUNCEMENTS

SELECTED RELEASE

PRIMESERV GROUP LIMITED – Reviewed financial results

For the year ending 31 March 2024, the company reported strong financial performance with revenue up 18% to R950.6 million and operating profit up 16% to R23.9 million. Earnings per share rose by 39% to 32.57 cents, and headline earnings per share increased by 40% to 32.68 cents. The net asset value per share grew by 10% to 265 cents. Additionally, a final gross cash dividend of 10.00 cents per share was declared, up from 7.00 cents per share in 2023, to be paid to shareholders recorded in the share register.

PMW | -3.23% OPEN | 140c HIGH | 150c LOW | 140c CLOSE | 150c TIME | 16:00

SEPHAKU HOLDINGS LIMITED – Audited financial results

For the financial year, SepHold achieved a group consolidated revenue of R1164 million, up from R981 million in FY 2023, with a net profit after tax of R67 million, significantly higher than the previous year's R26 million. Basic and headline earnings per share increased to 26.54 cents and 25.71 cents, respectively. Métier reported an EBITDA of R133 million with an improved margin of 11.5%, and a net profit after tax of R69 million. SepCem's sales revenue rose to R2.8 billion, with EBITDA increasing to R361 million and an EBITDA margin of 12.8%, while its net profit after tax improved to R42 million from a net loss of R4 million in FY 2023.

SEP | -3.85% OPEN | 135c HIGH | 135c LOW | 125c CLOSE | 125c TIME | 14:41

EXPECTED COMPANY REPORTING SCHEDULE

COMPANY	CODE	RELEASE	DATE
Nampak	NPK	Interim	28 Jun '24
Sebata	SEB	Final	18 Jul '24
Anglo American Platinum	AMS	Interim	24 Jul '24
Kumba Iron Ore	KIO	Interim	25 Jul '24
British American Tobacco	BTI	Interim	25 Jul '24

BANK AND OTHER SELECTE PREFERENCE SHARES

COMPANY	CODE	CLOSE	CLEAN YIELD	NEXT LDT (Est.)
Investec Limited	INPR	8500	11.24	Thu, 06 Jun '24
Standard Bank	SBPP	8530	11.15	Thu, 05 Sep '24
Absa	ABSP	74400	11.48	Thu, 12 Sep '24
Capitec	CPIP	10000	9.69	Thu, 19 Sep '24
Steinhoff	SHFF	9734	10.47	Thu, 17 Oct '24
Grindrod	GNDP	9292	12.22	Thu, 19 Sep '24
Netcare	NTCP	7970	11.82	Thu, 31 Oct '24
Discovery	DSBP	9615	11.91	Thu, 19 Sep '24
Invicta	IVTP	11100	13.41	Thu, 27 Jun '24

LOCAL EQUITIES | JSE MID CAP COMPANIES (Cents Per Share)

COMPANY	CODE	CLOSE	PREVIOUS	1D%	1M%	YTD%
Aspen Pharmacare Hldgs Ltd	APN	22919	24080	-4.82	1.27	12.62
African Rainbow Min Ltd	ARI	22463	22445	0.08	-2.33	12.32
AVI Ltd	AVI	9426	9471	-0.48	5.91	14.85
Barloworld Ltd	BAW	8803	8847	-0.50	-2.26	11.43
Bidvest Ltd	BVT	27633	27883	-0.90	7.26	9.53
Bytes Technology Grp PLC	BYI	12766	12677	0.70	-8.63	-10.86
Capital&Counties Prop plc	CCO	3200	3217	-0.53	-3.93	-1.54
Clicks Group Ltd	CLS	33302	33776	-1.40	7.44	2.24
Dis-Chem Pharmacies Ltd	DCP	3358	3325	0.99	-1.47	9.42
Distell Group Hldgs Ltd	DGH	88	88	0.00	0.00	2.33
Exxaro Resources Ltd	EXX	17207	17308	-0.58	-7.54	-15.85
Fortress Real Est INV B	FFB	1645	1614	1.92	7.03	14.55
Growthpoint Prop Ltd	GRT	1211	1213	-0.16	8.51	3.68
Harmony GM Co Ltd	HAR	16552	16904	-2.08	-4.48	38.41
Hammerson plc	HMN	638	636	0.31	-0.47	-6.18
Investec Ltd	INL	13037	13197	-1.21	3.62	3.81
Investec plc	INP	13081	13198	-0.89	3.24	3.86
Italtile Ltd	ITE	1090	1116	-2.33	14.74	-2.68
Life Healthc Grp Hldgs Ltd	LHC	1239	1234	0.41	10.92	-32.55
MultiChoice Group Ltd	MCG	10400	10439	-0.37	-9.96	28.36
Montauk Renewables Inc	MKR	10100	9984	1.16	7.45	-41.28
Mr Price Group Ltd	MRP	20512	20300	1.04	9.95	30.81
Momentum Met Hldgs Ltd	MTM	2259	2292	-1.44	2.12	3.20
Ninety One Plc	N91	3872	3871	0.03	-5.40	-10.20
Nedbank Group Ltd	NED	25336	25785	-1.74	5.33	17.17
Northam Platinum Hldgs Ltd	NPH	12783	12848	-0.51	-9.88	-8.97
NEPI Rockcastle N.V.	NRP	13040	13065	-0.19	-0.46	3.18
Netcare Limited	NTC	1244	1270	-2.05	5.87	-12.64
Ninety One Limited	NY1	3824	3821	0.08	-3.92	-11.01
Old Mutual Limited	OMU	1203	1197	0.50	4.61	-7.89
OUTsurance Group Ltd	OUT	4516	4619	-2.23	4.76	7.01
Pick n Pay Stores Ltd	PIK	2510	2492	0.72	4.58	7.86
Pepkor Holdings Ltd	PPH	1860	1862	-0.11	1.31	-5.25
Quilter Plc	QLT	2766	2770	-0.14	0.73	13.92
Redefine Properties Ltd	RDF	400	400	0.00	8.40	3.90
Remgro Ltd	REM	13627	14000	-2.66	7.98	-16.13
Resilient REIT Limited	RES	4738	4690	1.02	7.44	6.98
Reinet Investments S.C.A	RNI	45786	46990	-2.56	-1.61	-1.79
Sappi Ltd	SAP	4847	4785	1.30	-15.10	9.66
Santam Limited	SNT	31806	31342	1.48	5.32	10.99
The Spar Group Ltd	SPP	11795	11606	1.63	15.99	0.04
Sirius Real Estate Ltd	SRE	2168	2205	-1.68	-3.94	-2.12
Tiger Brands Ltd	TBS	20030	20550	-2.53	-3.24	-0.49
Transaction Capital Ltd	TCP	285	300	-5.00	9.62	-64.29
The Foschini Group Limited	TFG	12597	12606	-0.07	21.83	13.53
Thungela Resources Ltd	TGA	11091	11022	0.63	-20.41	-27.89
Telkom SA SOC Ltd	TKG	2340	2411	-2.94	-7.40	-21.32
Truworths Int Ltd	TRU	9126	9188	-0.67	11.55	22.74
Woolworths Holdings Ltd	WHL	6088	6019	1.15	-0.62	-15.68
Zeda Limited	ZZD	1185	1196	-0.92	-1.25	-7.06

LOCAL EQUITIES | JSE SMALL CAP COMPANIES (Cents Per Share)

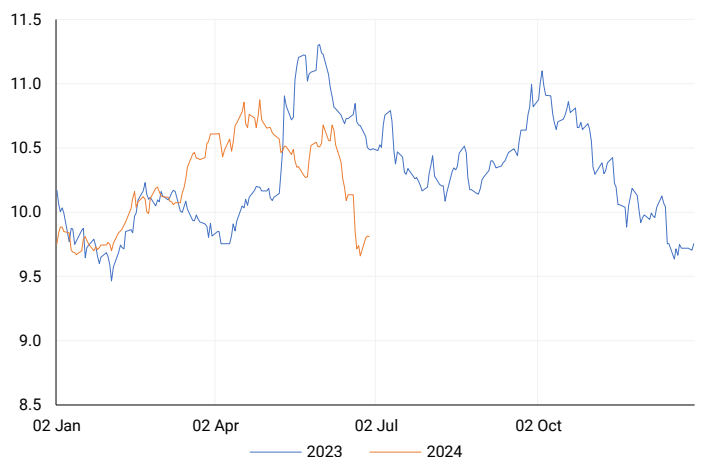
COMPANY	CODE	CLOSE	PREVIOUS	1D%	1M%	YTD%
ArcelorMittal SA Limited	ACL	121	125	-3.20	7.08	-26.22
ADVTECH Ltd	ADH	2805	2770	1.26	4.78	14.30
Altron Limited A	AEL	1405	1323	6.20	12.22	37.07
AECI Limited	AFE	10485	10639	-1.45	7.65	-4.41
Alexander Forbes Grp Hldgs	AFH	750	740	1.35	13.64	13.64
Afrimat Limited	AFT	7050	7018	0.46	2.47	11.90
African Rainbow Cap Inv	AIL	660	660	0.00	17.86	34.97
Adcock Ingram Hldgs Ltd	AIP	5961	5922	0.66	10.39	-0.82
Astral Foods Ltd	ARL	16400	16131	1.67	6.94	11.89
Attacq Limited	ATT	1093	1054	3.70	6.43	18.55
Brait PLC	BAT	96	86	11.63	-19.33	-47.25
Blue Label Telecoms Ltd	BLU	398	391	1.79	-8.08	2.58
Coronation Fund Mngrs Ld	CML	3606	3628	-0.61	3.71	15.73
Curro Holdings Limited	COH	1107	1113	-0.54	5.33	-4.98
Cashbuild Ltd	CSB	15701	15000	4.67	6.82	-5.94
DRD Gold Ltd	DRD	1576	1610	-2.11	-2.78	-0.06
Datatec Ltd	DTC	3795	3751	1.17	1.55	-6.30
Emira Property Fund Ltd	EMI	1090	1116	-2.33	14.62	27.49
Equites Prop Fund Ltd	EQU	1293	1268	1.97	0.86	-7.31
Famous Brands Ltd	FBR	5197	5123	1.44	3.71	-10.29
Firvest Limited B	FTB	388	386	0.52	-3.48	12.79
Grindrod Ltd	GND	1439	1446	-0.48	3.08	25.57
Hosken Cons Inv Ltd	HCI	17199	17284	-0.49	-0.57	-15.11
Hudaco Industries Ltd	HDC	17500	17790	-1.63	3.55	8.95
Hyprop Inv Ltd	HYP	3152	3030	4.03	9.75	1.32
Investec Property Fund Ltd	IPF	706	698	1.15	0.28	-11.75
JSE Ltd	JSE	10708	10772	-0.59	16.04	15.84
KAP Industrial Hldgs Ltd	KAP	295	290	1.72	12.17	12.60
Karooooo Ltd	KRO	60750	61450	-1.14	12.92	27.90
PSG Konsult Limited	KST	1680	1690	-0.59	5.20	9.45
Libstar Holdings Ltd	LBR	390	385	1.30	5.41	11.43
Lighthouse Properties plc	LTE	816	815	0.12	3.42	11.02
Industrials REIT Limited	MLI	0.4	0.5	-20.00	-33.33	-42.86
MAS P.L.C	MSP	1629	1616	0.80	-3.61	-5.89
Metair Investments Ltd	MTA	1100	1132	-2.83	-3.08	-38.03
Motus Holdings Ltd	MTH	9400	9397	0.03	5.93	-7.39
Murray & Roberts Hldgs	MUR	217	217	0.00	24.00	45.64
Oceana Group Ltd	OCE	7220	7400	-2.43	-0.69	2.16
Omnia Holdings Ltd	OMN	6352	6127	3.67	14.00	-2.83
Pan African Resource plc	PAN	608	614	-0.98	5.74	48.66
PPC Limited	PPC	342	369	-7.32	1.48	-14.29
Raubex Group Ltd	RBX	4015	3977	0.96	9.10	44.84
RFG Holdings Limited	RFG	1600	1524	4.99	14.37	18.52
Reunert Ltd	RLO	7000	6955	0.65	3.14	16.78
SA Corp Real Estate Ltd	SAC	264	263	0.38	3.13	13.79
Super Group Ltd	SPG	2797	2824	-0.96	-0.11	-5.98
Stor-Age Prop REIT Ltd	SSS	1419	1409	0.71	7.50	8.65
Southern Sun LTD	SSU	546	530	3.02	-4.21	4.00
Sun International Ltd	SUI	3630	3603	0.75	0.55	-11.46
Tharisa plc	THA	1869	1821	2.64	1.58	23.69
Tsogo Sun Gaming Ltd	TSG	1109	1150	-3.57	-1.86	-9.47
Vukile Property Fund Ltd	VKE	1511	1549	-2.45	1.96	7.01
Wilson Bayly Hlm-Ovc Ltd	WBO	16050	15930	0.75	7.44	23.40

10-YEAR BOND YIELD | SELECTED ITEMS (Basis Point Change)

REGION	YIELD	1D	1M	1Y
United States	4.34%	9	-13	--
United Kingdom	4.13%	5	-13	-16
Germany	2.45%	4	-13	14
Japan	1.07%	9	8	--
South African 10Y	10.05%	-3	-77	-47

SOUTH AFRICAN 10-YEAR

2023 vs 2024 to date

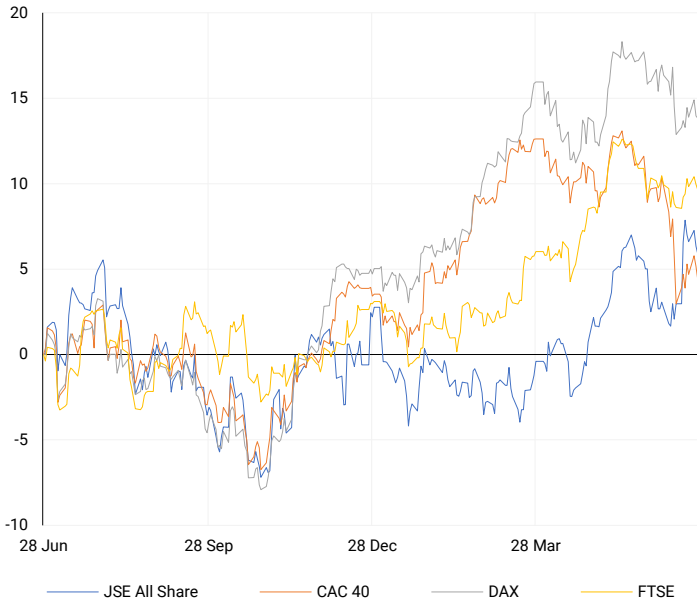


GLOBAL INTEREST RATES | SELECTED ITEMS

REGION	DATE CHANGED	CURRENT RATE
United States	Wed, 26 Jul '23	5.25%-5.50%
United Kingdom	Thu, 03 Aug '23	5.25%
European	Thu, 27 Jul '23	4.25%
SA Repo Rate	Thu, 25 May '23	8.25%
SA Prime Rate	Thu, 25 May '23	11.75%

EUROPEAN INDICES

Normalised percentage performances

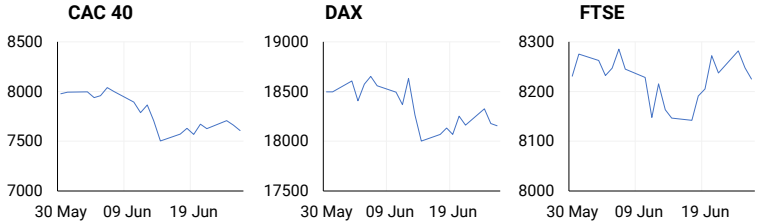


EUROPEAN MARKET SUMMARY

SELECTED ITEMS

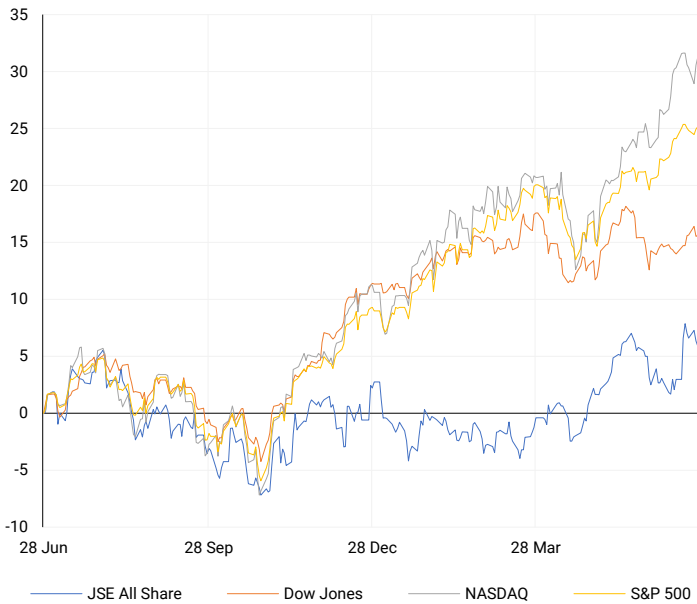
European stocks fell on Wednesday, continuing the negative trend from the previous session. The pan-European Stoxx 600 index closed 0.5% lower, despite rising earlier in the day. Auto and travel and leisure stocks dropped by 1.23% and 1.76%, respectively, while the tech sector was the only one to see gains, inching up 0.36%. Data from the GfK and the Nuremberg Institute for Market Decisions indicated that German consumer sentiment is expected to decline in July after four months of improvement.

EUROPEAN INDICES	CLOSE	PREVIOUS	1D%	5D%	1M%	YTD%
CAC 40	7609.15	7662.30	-0.69	0.51	-6.00	0.87
DAX 30	18155.24	18177.62	-0.12	0.48	-2.88	8.38
Eurostoxx 50	4916.90	4935.00	-0.37	0.70	-2.37	8.74
FTSE	8225.33	8247.79	-0.27	0.25	-1.11	6.36



AMERICAN INDICES

Normalised percentage performances

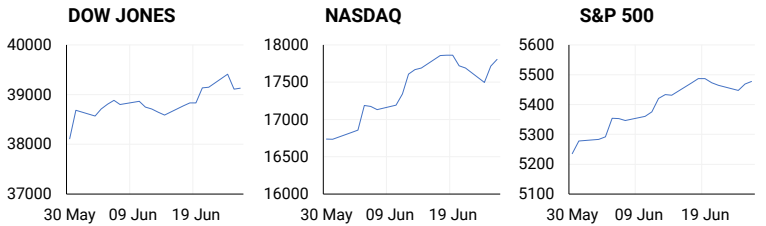


AMERICAN MARKET SUMMARY

SELECTED ITEMS

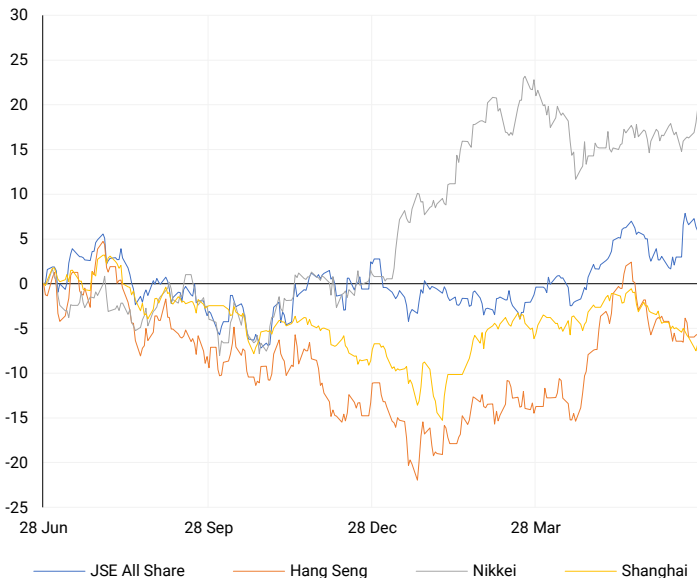
Major U.S. stock indexes closed with modest gains on Wednesday after a volatile trading session, as investors remained cautious ahead of a presidential debate and an important inflation report. Several economic data releases are expected this week, culminating in Friday's personal consumption expenditures (PCE) price index, the Federal Reserve's preferred measure of inflation. While the Fed has projected only one interest rate cut this year in December, investors see a 56.3% chance of a 25-basis point cut in September and anticipate about two cuts by year-end, according to LSEG's interest rate probabilities app.

AMERICAN INDICES	CLOSE	PREVIOUS	1D%	5D%	1M%	YTD%
Dow Jones	39127.80	39112.16	0.04	0.75	0.15	3.82
Nasdaq	17805.16	17717.65	0.49	-0.32	5.23	18.61
S&P 500	5477.90	5469.30	0.16	-0.17	3.26	14.84
US VIX	12.55	12.84	-2.26	0.56	5.20	0.80



ASIAN INDICES

Normalised percentage performances

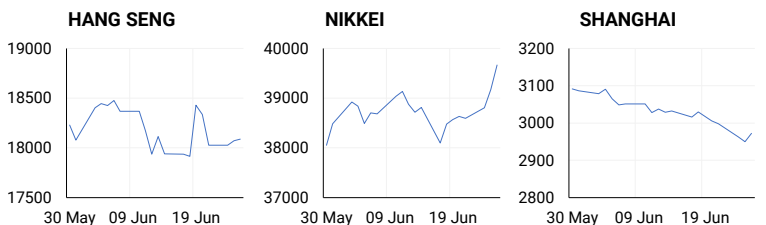


ASIAN MARKET SUMMARY

SELECTED ITEMS

Asia-Pacific markets opened lower this morning, as the Japanese yen weakened to a near 38-year low against the U.S. dollar. Finance Minister Shunichi Suzuki expressed deep concern about the FX impact on the economy. Japan's retail sales growth for May was 3%, surpassing market expectations of 2% and April's revised 2% growth. China's industrial profits grew 3.4% year-on-year from January to May, totalling 2.75 trillion yuan.

ASIAN INDICES	CLOSE	PREVIOUS	1D%	5D%	1M%	YTD%
Hang Seng	18089.93	18072.90	0.09	-1.85	-2.79	6.12
Nikkei 225	39667.07	39173.15	1.26	2.84	2.64	18.54
Shanghai	2972.53	2950.00	0.76	-1.51	-3.77	-0.08



COMMODITIES MARKET SUMMARY

SELECTED ITEMS

Gold prices remained steady this morning after hitting a two-week low the previous day, as investors awaited U.S. inflation data for clues on the Federal Reserve's interest rate plans. Meanwhile, oil prices fell in early Asian trade due to an unexpected increase in U.S. stockpiles, raising concerns about weak demand from the world's top oil consumer. However, fears that an escalation of the Gaza conflict could disrupt Middle East supplies limited the decline.

COMMODITY	LAST	CLOSE	% CHG	1D%	5D%	YTD%
Brent Crude	85.05	85.19	-0.16	0.34	-0.09	10.52
Gold	2300.25	2298.07	0.09	-0.93	-1.32	11.39
Palladium	931.95	934.50	-0.27	-1.71	11.92	-14.83
Platinum	1008.50	1014.25	-0.57	2.79	3.25	2.73
Silver	28.78	28.77	0.03	-0.45	-3.33	20.94

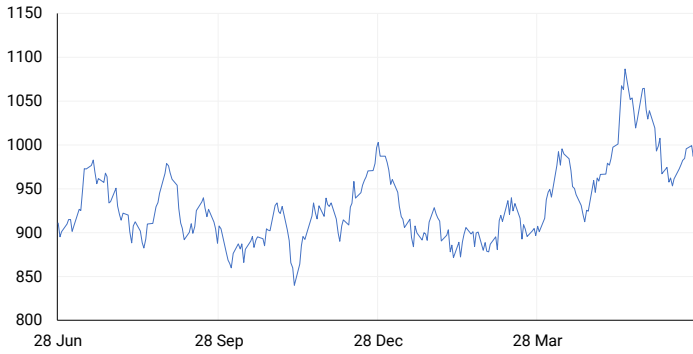
BRENT CRUDE

One-year



PLATINUM

One-year



GOLD

One-year



CURRENCY PAIR	LAST	CLOSE	% CHG	1D%	5D%	YTD%
USDZAR	18.14	18.17	-0.12	-0.43	1.19	-0.87
GBPZAR	22.93	22.93	-0.02	-0.89	0.41	-1.56
EURZAR	19.40	19.42	-0.08	-0.65	0.55	-3.82
AUDZAR	12.09	12.08	0.09	-0.37	0.83	-3.02
EURUSD	1.07	1.07	0.12	-0.31	-0.59	-3.23
USDJPY	160.35	160.81	-0.29	0.71	1.72	14.02
GBPUSD	1.26	1.26	0.12	-0.51	-0.77	-0.87
USDCHF	0.90	0.90	-0.08	0.29	1.46	6.63

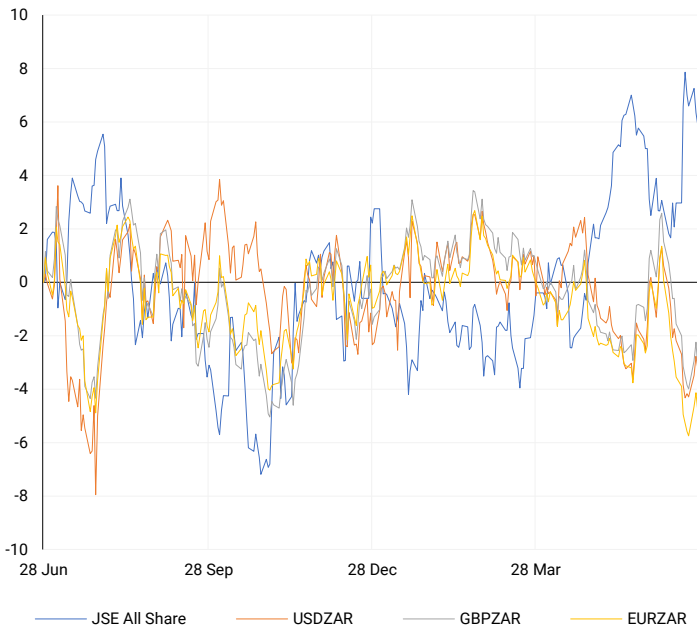
CURRENCY MARKET SUMMARY

SELECTED ITEMS

The South African rand edged lower on Wednesday as uncertainty loomed over key appointments in President Cyril Ramaphosa's imminent cabinet announcement. The U.S. dollar reached its highest level against the Japanese yen in nearly 38 years on Wednesday, sparking speculation that Japanese authorities might intervene to strengthen their currency.

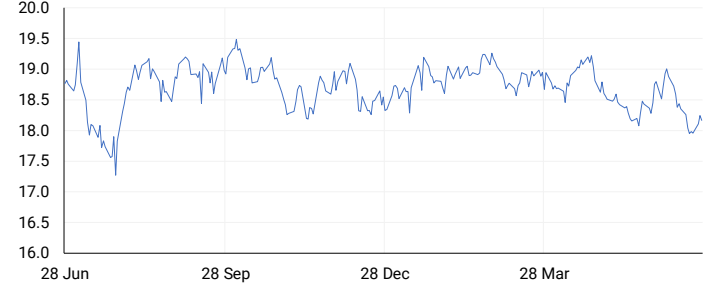
CURRENCY PAIRS vs JSE ALL SHARE

Normalised percentage performances



USDZAR

One-year



EURUSD

One-year



SOURCES | JSE, IRESS, MONEYWEB, CNBC, BBC, CNN

Disclaimer: This note is prepared for Sanlam Private Wealth (Pty) Ltd, by K2013143132 (Pty) Ltd trading as ThompsonGreen. ThompsonGreen is an independent company contracted to Sanlam Private Wealth (Pty) Ltd. The views expressed in this note are those of ThompsonGreen and/or its analysts and not necessarily the views of Sanlam Private Wealth (Pty) Ltd, Sanlam or any officer or agent thereof. K2013143132 (Pty) Ltd trading as ThompsonGreen is a research house and not a registered broker, financial adviser or financial service provider. Our editors and customer services teams also do not give personal investment advice. The information in this document is general advice only and may not be appropriate to your particular investment objectives, financial situation or particular needs. Before investing, or if you are in any doubt about your personal situation, you should seek professional advice from a stockbroker or independent financial adviser authorised by the Financial Sector Conduct Authority.