

GLOBAL OVERVIEW | SELECTED INDICES

SOUTH AFRICAN INDICES	CLOSE	PREVIOUS	1D%	5D%	1M%	YTD%
All Share	78969.33	79252.39	-0.36	-1.38	0.06	2.70
Top 40	72287.12	72563.55	-0.38	-1.34	-0.38	2.54
Financial 15	18313.47	18661.49	-1.86	-3.35	7.33	2.46
Industrial 25	107788.98	107823.85	-0.03	-1.81	-1.59	3.93
Resource 10	59664.53	58786.65	1.49	2.94	-5.25	3.71
Mid Cap	82427.20	82397.46	0.04	-1.63	1.33	2.50
Small Cap	76956.82	77432.97	-0.61	-1.87	3.88	6.16
Banks	11433.52	11695.82	-2.24	-3.85	8.42	4.43
Retailers	6429.68	6500.86	-1.09	-1.98	7.38	3.15
Property (J253) - TR	2036.65	2039.99	-0.16	-2.12	4.77	9.28

AMERICAN INDICES	CLOSE	PREVIOUS	1D%	5D%	1M%	YTD%
Dow Jones	39164.06	39127.80	0.09	0.07	0.24	3.91
Nasdaq	17858.68	17805.16	0.30	0.77	5.54	18.97
S&P 500	5482.87	5477.90	0.09	0.18	3.36	14.95
US VIX	12.24	12.55	-2.47	-7.83	-0.97	-1.69

EUROPEAN INDICES	CLOSE	PREVIOUS	1D%	5D%	1M%	YTD%
CAC 40	7530.72	7609.15	-1.03	-1.83	-7.40	-0.17
DAX 30	18210.55	18155.24	0.30	-0.24	-3.01	8.71
Eurostoxx 50	4906.40	4916.90	-0.21	-0.75	-2.93	8.51
FTSE	8179.68	8225.33	-0.55	-1.12	-1.66	5.77

ASIAN INDICES	CLOSE	PREVIOUS	1D%	5D%	1M%	YTD%
Hang Seng	17716.47	18089.93	-2.06	-3.38	-5.90	3.92
Nikkei 225	39341.54	39667.07	-0.82	1.83	1.14	17.56
Shanghai	2945.85	2972.53	-0.90	-1.98	-5.70	-0.98

EARLY MORNING MARKETS	LAST	CLOSE	% CHG	1D%	5D%	YTD%
TENCENT	374.00	374.40	-0.11	-1.99	-3.41	29.01
BHP AUS	4301.00	4315.00	-0.32	-0.44	0.94	-14.40

NOTE : 5D% and 1M% are rolling percentage moves

INTERNATIONAL ECONOMIC CALENDAR | SELECTED EVENTS

TIME	AREA	TODAY'S EVENTS & RELEASES	PERIOD	EXP.	PREV.
8:00	ZA	M3 Money Supply y/y	May	---	0.1
8:00	ZA	Private Sector Credit y/y	May	3.7%	3.9%
14:00	ZA	Balance of Trade	May	R15B	R10.5B
14:00	ZA	Budget Balance	May	R-50B	R-78.B
14:30	US	Core PCE Price Index m/m	May	0.1%	0.2%

TIME	AREA	PREVIOUS SESSION'S RELEASES	PERIOD	EXP.	ACT.
10:00	ZA	Consumer Confidence	Q2	-18.0	-12.0
11:30	ZA	PPI m/m	May	0.2%	0.1%
14:30	US	GDP Growth Rate q/q Final	Q1	1.3%	1.4%
14:30	US	Unemployment Claims	Jun	239K	233K
16:00	US	Pending Home Sales m/m	May	0.0	0.0

JSE ALL SHARE | BEST AND WORST ONE-DAY PERFORMERS

BEST ONE-DAY % PERFORMERS	CODE	CLOSE	1D%	5D%	YTD%
Mondi plc	MNP	35750	4.86	3.79	-1.52
Montauk Renewables Inc	MKR	10570	4.65	6.24	-38.55
Harmony GM Co Ltd	HAR	17300	4.52	5.31	44.66
Life Healthc Grp Hldgs Ltd	LHC	1285	3.71	1.18	-30.05
Gold Fields Ltd	GFI	28163	3.67	5.89	1.39
Omnia Holdings Ltd	OMN	6543	3.01	5.43	0.09

WORST ONE-DAY % PERFORMERS	CODE	CLOSE	1D%	5D%	YTD%
Hammerson plc	HMN	551	-13.64	-14.84	-18.97
Absa Group Limited	ABG	15378	-9.54	-11.24	-6.07
Brait PLC	BAT	89	-7.29	-6.32	-51.10
RCL Foods Limited	RCL	1021	-7.27	-15.97	19.98
Alexander Forbes Grp Hldgs	AFH	705	-6.00	-5.87	6.82

DIVIDEND DATA

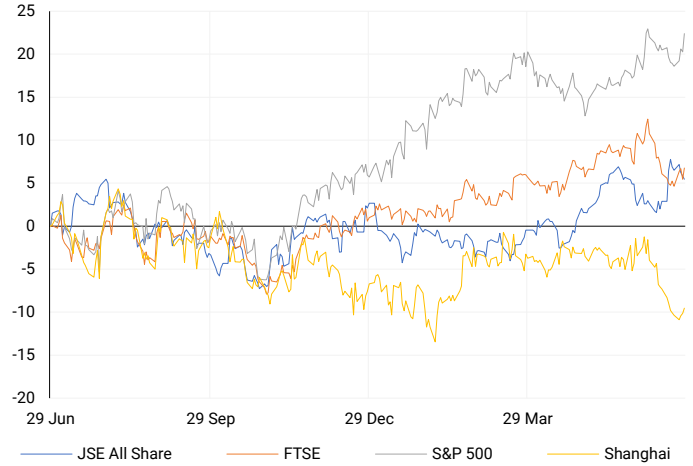
COMPANY	CODE	EXPECTED DIVIDEND	COMPANY	CODE	EXPECTED DIVIDEND
Mr Price Group	MPR	58.8 GBPp	---	---	---
Tiger Brands	TBS	5.7 ZARc	---	---	---
Invicta Holdings	IVTP	210 ZARc	---	---	---
Novus Holdings	NVS	55.2 ZARc	---	---	---
Stor-Age Property REIT	SSS	195 ZARc	---	---	---

SOURCES | JSE, IRESS, MONEYWEB, CNBC, BBC, CNN

PLEASE SEE THE BOTTOM OF THE LAST PAGE FOR THE FULL DISCLAIMER

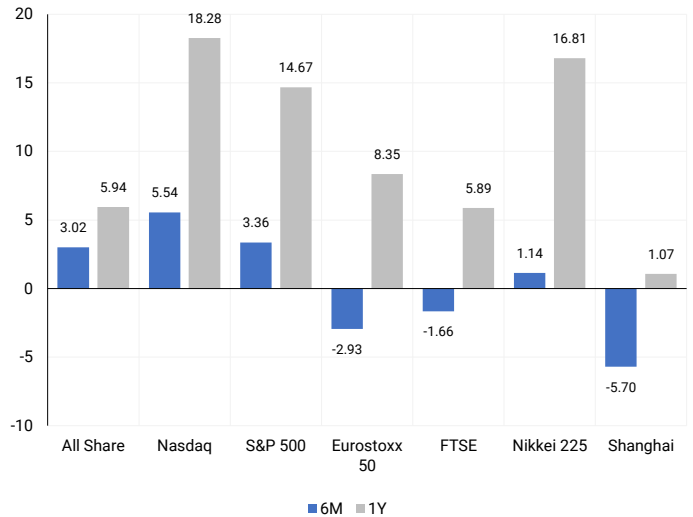
INTERNATIONAL INDICES

Normalised percentage performances - In rand terms



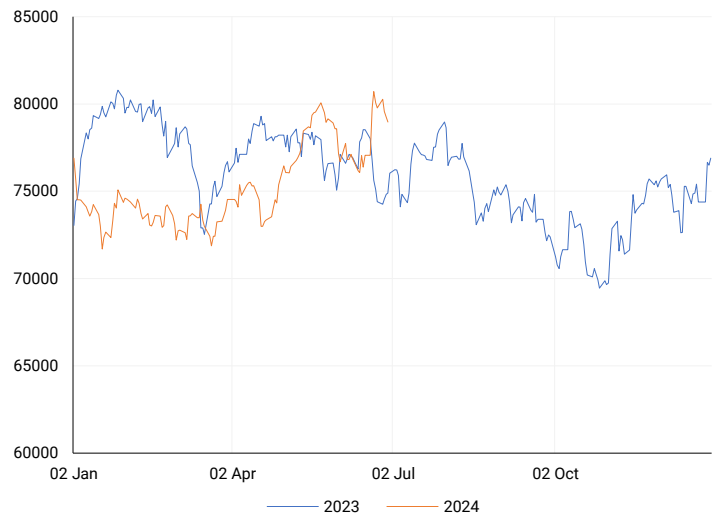
INTERNATIONAL INDICES

6-month & 1-year percentage performances



JSE ALL SHARE INDEX

2023 v 2024 to date



Last date to trade Tue, 02 July

## LOCAL EQUITIES | JSE LARGE CAP COMPANIES (Cents Per Share)

COMPANY	CLOSE	PREVIOUS	1D%	5D%	1M%	YTD%
Absa Group Limited	15378	16999	-9.54	-11.24	0.56	-6.07
Anglo American plc	58060	58370	-0.53	2.10	-5.20	22.62
Anglo American Plat Ltd	58291	61411	-5.08	-6.09	-18.83	-39.53
Anglogold Ashanti Ltd	46326	45020	2.90	8.31	1.36	31.08
Anheuser-Busch InBev SA NV	109202	108312	0.82	1.66	-8.30	-9.01
BHP Group Limited	52252	52294	-0.08	1.17	-5.44	-17.51
BID Corporation Ltd	42541	43121	-1.35	0.21	1.46	-0.29
British American Tob plc	56903	56350	0.98	1.37	2.10	5.08
Compagnie Fin Richemont	291486	289302	0.75	3.50	0.70	13.52
Capitec Bank Hldgs Ltd	253500	256340	-1.11	-1.82	12.84	25.10
Discovery Ltd	12982	13330	-2.61	-3.34	10.96	-9.65
Firststrand Ltd	7339	7481	-1.90	-2.95	8.34	-0.16
Gold Fields Ltd	28163	27167	3.67	5.89	-5.31	1.39
Glencore plc	10568	10504	0.61	-0.87	-6.47	-5.35
Impala Platinum Hlgs Ltd	9026	9123	-1.06	-0.36	-17.70	-1.11
Kumba Iron Ore Ltd	44190	43663	1.21	-7.55	-16.21	-28.12
Mondi plc	35750	34094	4.86	3.79	-4.16	-1.52
MTN Group Ltd	8269	8229	0.49	-3.50	-2.23	-28.41
Naspers Ltd -N-	355740	358182	-0.68	-3.93	-9.07	13.73
Prosus N.V.	65785	65940	-0.24	-0.70	-4.88	17.39
South32 Limited	4546	4438	2.43	1.50	-4.46	7.75
Standard Bank Group Ltd	20507	20696	-0.91	-2.99	11.33	-1.46
Shoprite Holdings Ltd	27901	28220	-1.13	-3.96	6.56	1.44
Sanlam Limited	7844	8020	-2.19	-2.74	6.55	7.75
Sasol Limited	13487	13539	-0.38	0.34	3.83	-27.21
Sibanye Stillwater Ltd	1984	1957	1.38	-3.08	-17.71	-20.32
Vodacom Group Ltd	9286	9350	-0.68	-5.24	-1.75	-12.40

## SOUTH AFRICAN MARKET SUMMARY

### SELECTED ITEMS

The Johannesburg Stock Exchange's Top-40 index closed down 0.4% on Thursday amid reports of a major disagreement between the Democratic Alliance (DA) and President Cyril Ramaphosa over cabinet positions. The DA, which expected to receive key ministries in return for supporting Ramaphosa's re-election, threatened to back out of the deal if Ramaphosa did not honour the agreement. This tension has put financial markets on edge, as the cabinet composition will indicate how the ANC plans to share power.

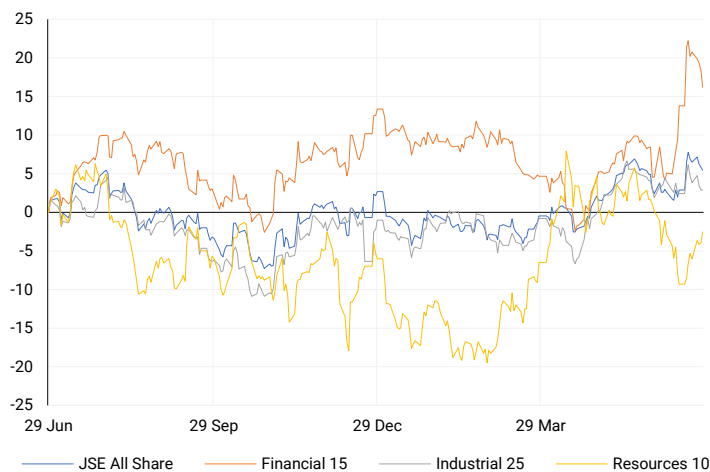
### JSE ALL SHARE

One-year



### LOCAL INDICES

Normalised percentage performances



### LOCAL SENS ANNOUNCEMENTS

#### SELECTED RELEASE

#### HUDACO INDUSTRIES LIMITED – Unaudited Interim Results

For the six months ended 31 May 2024, revenue decreased by 6.3% to R3 983 million from R4 250 million in the previous year. Operating profit fell by 11% to R414 million from R465 million. Comparable earnings per share, headline earnings per share, and basic earnings per share all dropped by 15.3% to 785 cents from 926 cents. The interim dividend remains unchanged at 325 cents per share. Net asset value per share increased by 5.7% to 11 427 cents from 10 809 cents. The interim dividend of 325 cents per share will be payable on 19 August 2024 to shareholders recorded by 16 August 2024.

HDC | 0.86% OPEN | 17347c HIGH | 17800c LOW | 17251c CLOSE | 17650c TIME | 17:44

#### FIRSTSTRAND LIMITED – Trading Statement

Earnings per share (EPS) for the current period are expected to increase by 1% to 8%, compared to the previous period's 648.1 cents per share, resulting in a range of 654.6 to 699.9 cents per share. Headline EPS is expected to increase by 1% to 5% from the prior period's 654.7 cents per share, leading to a range of 661.2 to 687.4 cents per share. Normalised EPS is also expected to increase by 1% to 5% from the previous period's 653.1 cents per share, resulting in a range of 659.6 to 685.8 cents per share.

FSR | -1.90% OPEN | 7450c HIGH | 7475c LOW | 7310c CLOSE | 7339c TIME | 13:15

### EXPECTED COMPANY REPORTING SCHEDULE

COMPANY	CODE	RELEASE	DATE
Nampak	NPK	Interim	28 Jun '24
Sebata	SEB	Final	18 Jul '24
Anglo American Platinum	AMS	Interim	24 Jul '24
Kumba Iron Ore	KIO	Interim	25 Jul '24
British American Tobacco	BTI	Interim	25 Jul '24

### BANK AND OTHER SELECTE PREFERENCE SHARES

COMPANY	CODE	CLOSE	CLEAN YIELD	NEXT LDT (Est.)
Investec Limited	INPR	8400	11.24	Thu, 06 Jun '24
Standard Bank	SBPP	8600	11.15	Thu, 05 Sep '24
Absa	ABSP	74550	11.48	Thu, 12 Sep '24
Capitec	CPIP	10000	9.69	Thu, 19 Sep '24
Steinhoff	SHFF	9734	10.47	Thu, 17 Oct '24
Grindrod	GNDP	9000	12.22	Thu, 19 Sep '24
Netcare	NTCP	7970	11.82	Thu, 31 Oct '24
Discovery	DSBP	9621	11.91	Thu, 19 Sep '24
Invicta	IVTP	11030	13.41	Thu, 27 Jun '24

**LOCAL EQUITIES | JSE MID CAP COMPANIES** (Cents Per Share)

COMPANY	CODE	CLOSE	PREVIOUS	1D%	1M%	YTD%
Aspen Pharmacare Hldgs Ltd	APN	23550	22919	2.75	3.66	15.72
African Rainbow Min Ltd	ARI	22628	22463	0.73	-2.10	13.14
AVI Ltd	AVI	9370	9426	-0.59	5.73	14.17
Barloworld Ltd	BAW	8711	8803	-1.05	-1.48	10.27
Bidvest Ltd	BVT	27689	27633	0.20	7.74	9.75
Bytes Technology Grp PLC	BYI	12800	12766	0.27	-8.48	-10.62
Capital&Counties Prop plc	CCO	3230	3200	0.94	-0.92	-0.62
Clicks Group Ltd	CLS	33350	33302	0.14	9.17	2.39
Dis-Chem Pharmacies Ltd	DCP	3287	3358	-2.11	-3.61	7.10
Distell Group Hldgs Ltd	DGH	88	88	0.00	0.00	2.33
Exxaro Resources Ltd	EXX	17666	17207	2.67	-4.84	-13.61
Fortress Real Est INV B	FFB	1650	1645	0.30	7.91	14.90
Growthpoint Prop Ltd	GRT	1204	1211	-0.58	7.69	3.08
Harmony GM Co Ltd	HAR	17300	16552	4.52	-0.84	44.66
Hammerson plc	HMN	551	638	-13.64	-12.95	-18.97
Investec Ltd	INL	13100	13037	0.48	7.03	4.31
Investec plc	INP	13186	13081	0.80	7.08	4.69
Italtile Ltd	ITE	1090	1090	0.00	13.90	-2.68
Life Healthc Grp Hldgs Ltd	LHC	1285	1239	3.71	17.67	-30.05
MultiChoice Group Ltd	MCG	10470	10400	0.67	-8.57	29.23
Montauk Renewables Inc	MKR	10570	10100	4.65	12.72	-38.55
Mr Price Group Ltd	MRP	20115	20512	-1.94	8.01	28.28
Momentum Met Hldgs Ltd	MTM	2241	2259	-0.80	2.80	2.38
Ninety One Plc	N91	3874	3872	0.05	-5.23	-10.16
Nedbank Group Ltd	NED	24843	25336	-1.95	4.43	14.89
Northam Platinum Hldgs Ltd	NPH	12614	12783	-1.32	-11.73	-10.18
NEPI Rockcastle N.V.	NRP	13025	13040	-0.12	-0.02	3.06
Netcare Limited	NTC	1271	1244	2.17	10.33	-10.74
Ninety One Limited	NY1	3809	3824	-0.39	-4.80	-11.36
Old Mutual Limited	OMU	1196	1203	-0.58	4.45	-8.42
OUTsurance Group Ltd	OUT	4559	4516	0.95	6.49	8.03
Pick n Pay Stores Ltd	PIK	2497	2510	-0.52	-2.38	7.31
Pepkor Holdings Ltd	PPH	1848	1860	-0.65	0.00	-5.86
Quilter Plc	QLT	2816	2766	1.81	3.99	15.98
Redefine Properties Ltd	RDF	406	400	1.50	10.33	5.45
Remgro Ltd	REM	13350	13627	-2.03	6.06	-17.84
Resilient REIT Limited	RES	4693	4738	-0.95	7.56	5.96
Reinet Investments S.C.A	RNI	45875	45786	0.19	-2.20	-1.60
Sappi Ltd	SAP	4836	4847	-0.23	-13.70	9.41
Santam Limited	SNT	31368	31806	-1.38	3.92	9.46
The Spar Group Ltd	SPP	11752	11795	-0.36	16.56	-0.32
Sirius Real Estate Ltd	SRE	2180	2168	0.55	-2.02	-1.58
Tiger Brands Ltd	TBS	19600	20030	-2.15	-3.92	-2.63
Transaction Capital Ltd	TCP	288	285	1.05	10.34	-63.91
The Foschini Group Limited	TFG	12384	12597	-1.69	20.77	11.61
Thungela Resources Ltd	TGA	11224	11091	1.20	-17.25	-27.02
Telkom SA SOC Ltd	TKG	2357	2340	0.73	-4.11	-20.75
Truworths Int Ltd	TRU	9090	9126	-0.39	12.84	22.26
Woolworths Holdings Ltd	WHL	6087	6088	-0.02	1.50	-15.69
Zeda Limited	ZZD	1187	1185	0.17	-3.50	-6.90

**LOCAL EQUITIES | JSE SMALL CAP COMPANIES** (Cents Per Share)

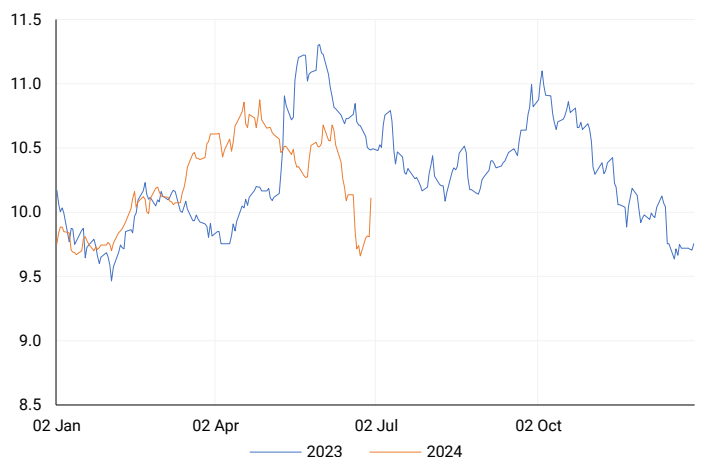
COMPANY	CODE	CLOSE	PREVIOUS	1D%	1M%	YTD%
ArcelorMittal SA Limited	ACL	119	121	-1.65	8.18	-27.44
ADVTECH Ltd	ADH	2803	2805	-0.07	5.18	14.22
Altron Limited A	AEL	1400	1405	-0.36	6.06	36.59
AECI Limited	AFE	10521	10485	0.34	8.46	-4.08
Alexander Forbes Grp Hldgs	AFH	705	750	-6.00	9.13	6.82
Afrimat Limited	AFT	7071	7050	0.30	2.78	12.24
African Rainbow Cap Inv	AIL	672	660	1.82	26.55	37.42
Adcock Ingram Hldgs Ltd	AIP	6000	5961	0.65	10.09	-0.17
Astral Foods Ltd	ARL	16074	16400	-1.99	6.34	9.67
Attacq Limited	ATT	1095	1093	0.18	8.42	18.76
Brait PLC	BAT	89	96	-7.29	-22.61	-51.10
Blue Label Telecoms Ltd	BLU	390	398	-2.01	-8.67	0.52
Coronation Fund Mngrs Ld	CML	3540	3606	-1.83	1.26	13.61
Curro Holdings Limited	COH	1100	1107	-0.63	5.77	-5.58
Cashbuild Ltd	CSB	15200	15701	-3.19	4.83	-8.94
DRD Gold Ltd	DRD	1591	1576	0.95	-1.18	0.89
Datatec Ltd	DTC	3807	3795	0.32	0.45	-6.00
Emira Property Fund Ltd	EMI	1060	1090	-2.75	12.77	23.98
Equites Prop Fund Ltd	EQU	1273	1293	-1.55	-1.32	-8.75
Famous Brands Ltd	FBR	5027	5197	-3.27	-0.77	-13.22
Fairvest Limited B	FTB	387	388	-0.26	-3.25	12.50
Grindrod Ltd	GND	1450	1439	0.76	4.02	26.53
Hosken Cons Inv Ltd	HCI	17221	17199	0.13	-1.02	-15.00
Hudaco Industries Ltd	HDC	17650	17500	0.86	5.63	9.88
Hyprop Inv Ltd	HYP	3119	3152	-1.05	9.98	0.26
Investec Property Fund Ltd	IPF	720	706	1.98	2.56	-10.00
JSE Ltd	JSE	10728	10708	0.19	15.35	16.05
KAP Industrial Hldgs Ltd	KAP	287	295	-2.71	10.81	9.54
Karooooo Ltd	KRO	58952	60750	-2.96	11.86	24.11
PSG Konsult Limited	KST	1688	1680	0.48	4.71	9.97
Libstar Holdings Ltd	LBR	395	390	1.28	6.76	12.86
Lighthouse Properties plc	LTE	802	816	-1.72	2.17	9.12
Industrials REIT Limited	MLI	0.4	0.4	0.00	-20.00	-42.86
MAS P.L.C	MSP	1620	1629	-0.55	-5.48	-6.41
Metair Investments Ltd	MTA	1087	1100	-1.18	-1.72	-38.76
Motus Holdings Ltd	MTH	9200	9400	-2.13	2.62	-9.36
Murray & Roberts Hldgs	MUR	206	217	-5.07	12.57	38.26
Oceana Group Ltd	OCE	7120	7220	-1.39	-2.80	0.75
Omnia Holdings Ltd	OMN	6543	6352	3.01	16.82	0.09
Pan African Resource plc	PAN	609	608	0.16	4.28	48.90
PPC Limited	PPC	322	342	-5.85	-6.94	-19.30
Raubex Group Ltd	RBX	3970	4015	-1.12	7.33	43.22
RFG Holdings Limited	RFG	1525	1600	-4.69	8.93	12.96
Reunert Ltd	RLO	6998	7000	-0.03	3.46	16.75
SA Corp Real Estate Ltd	SAC	260	264	-1.52	2.77	12.07
Super Group Ltd	SPG	2796	2797	-0.04	-0.36	-6.02
Stor-Age Prop REIT Ltd	SSS	1407	1419	-0.85	5.95	7.73
Southern Sun LTD	SSU	527	546	-3.48	-1.50	0.38
Sun International Ltd	SUI	3566	3630	-1.76	-1.19	-13.02
Tharisa plc	THA	1806	1869	-3.37	0.61	19.52
Tsogo Sun Gaming Ltd	TSG	1085	1109	-2.16	-4.15	-11.43
Vukile Property Fund Ltd	VKE	1519	1511	0.53	2.57	7.58
Wilson Bayly Hlm-Ovc Ltd	WBO	16026	16050	-0.15	4.68	23.22

**10-YEAR BOND YIELD | SELECTED ITEMS** (Basis Point Change)

REGION	YIELD	1D	1M	1Y
United States	4.31%	-2	-15	--
United Kingdom	4.13%	0	-13	-24
Germany	2.44%	0	-10	9
Japan	1.07%	5	6	--
South African 10Y	10.36%	31	-42	-12

**SOUTH AFRICAN 10-YEAR**

2023 vs 2024 to date

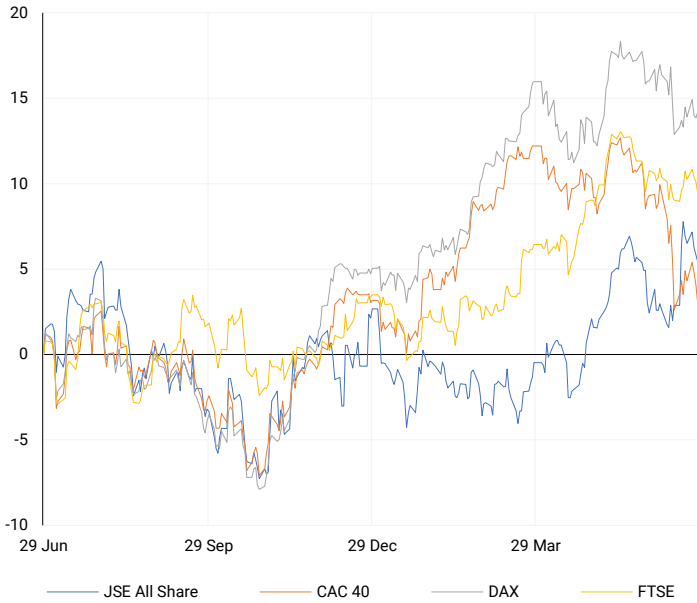


**GLOBAL INTEREST RATES | SELECTED ITEMS**

REGION	DATE CHANGED	CURRENT RATE
United States	Wed, 26 Jul '23	5.25%-5.50%
United Kingdom	Thu, 03 Aug '23	5.25%
European	Thu, 27 Jul '23	4.25%
SA Repo Rate	Thu, 25 May '23	8.25%
SA Prime Rate	Thu, 25 May '23	11.75%

## EUROPEAN INDICES

Normalised percentage performances

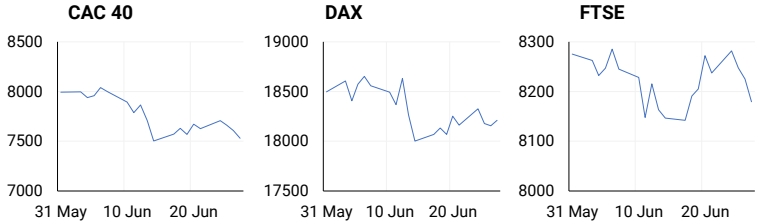


## EUROPEAN MARKET SUMMARY

### SELECTED ITEMS

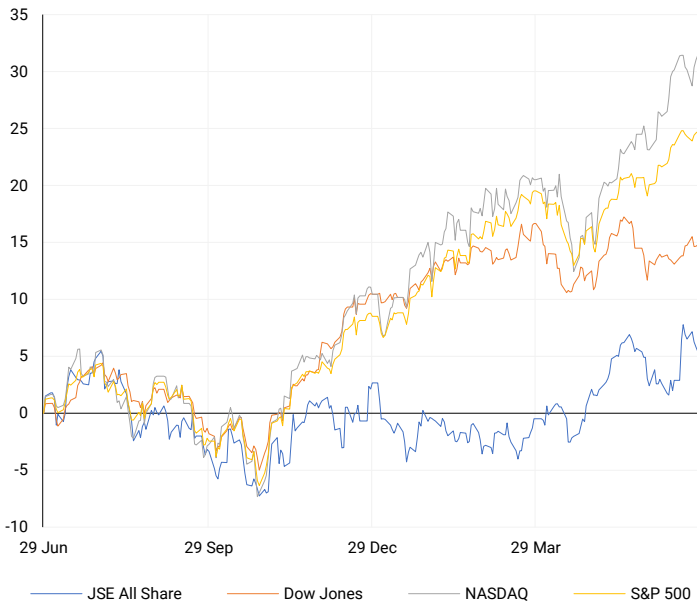
European stocks closed lower on Thursday amid global inflation concerns. The pan-European Stoxx 600 fell 0.4%, with most sectors and major bourses in the red. Media stocks rose 0.45%, but retail stocks dropped 1.86%. Data released included Italy's improved consumer and business confidence numbers and a 0.6% decline in Spanish retail sales.

EUROPEAN INDICES	CLOSE	PREVIOUS	1D%	5D%	1M%	YTD%
CAC 40	7530.72	7609.15	-1.03	-1.83	-7.40	-0.17
DAX 30	18210.55	18155.24	0.30	-0.24	-3.01	8.71
Eurostoxx 50	4906.40	4916.90	-0.21	-0.75	-2.93	8.51
FTSE	8179.68	8225.33	-0.55	-1.12	-1.66	5.77



## AMERICAN INDICES

Normalised percentage performances

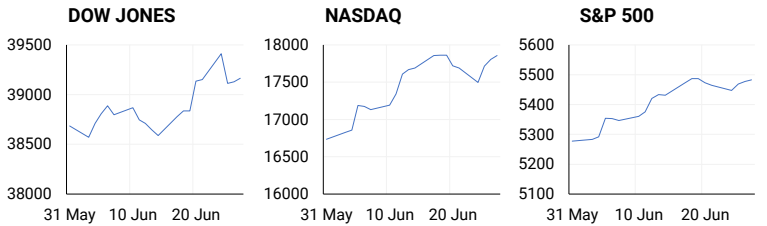


## AMERICAN MARKET SUMMARY

### SELECTED ITEMS

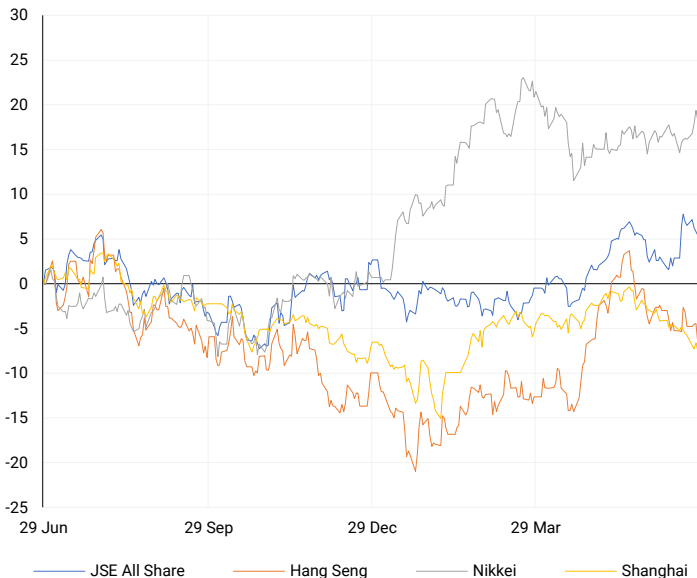
U.S. stocks closed mostly unchanged on Thursday as investors awaited new inflation data. The Nasdaq managed a slight gain after reports showed a continued slowdown in economic activity, boosting hopes for potential rate cuts. Unexpectedly, new orders for key U.S.-manufactured capital goods fell in May, and core durable goods orders dropped 0.1% instead of the forecasted 0.2% rise. Weekly jobless claims fell to 233,000, below the expected 236,000, and U.S. economic growth for the first quarter was revised higher.

AMERICAN INDICES	CLOSE	PREVIOUS	1D%	5D%	1M%	YTD%
Dow Jones	39164.06	39127.80	0.09	0.07	0.24	3.91
Nasdaq	17858.68	17805.16	0.30	0.77	5.54	18.97
S&P 500	5482.87	5477.90	0.09	0.18	3.36	14.95
US VIX	12.24	12.55	-2.47	-7.83	-0.97	-1.69



## ASIAN INDICES

Normalised percentage performances

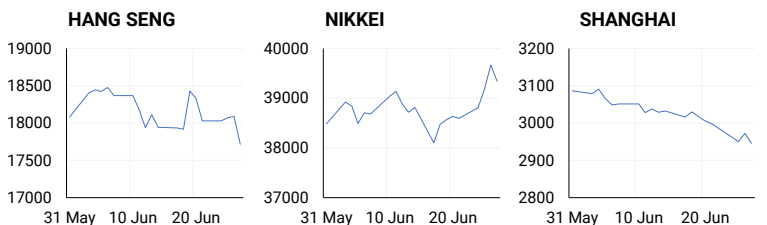


## ASIAN MARKET SUMMARY

### SELECTED ITEMS

Asia-Pacific markets climbed this morning as investors assessed key economic data from Japan. Tokyo's headline inflation accelerated to 2.3% in June from 2.2% in May, while core inflation rose to 2.1% from 1.9%. Japan's industrial production grew 2.8% month-on-month in May, surpassing expectations, and increased 0.3% year-on-year. South Korea's retail sales fell 0.2% year-on-year in May, a softer decline compared to April's 0.8% drop.

ASIAN INDICES	CLOSE	PREVIOUS	1D%	5D%	1M%	YTD%
Hang Seng	17716.47	18089.93	-2.06	-3.38	-5.90	3.92
Nikkei 225	39341.54	39667.07	-0.82	1.83	1.14	17.56
Shanghai	2945.85	2972.53	-0.90	-1.98	-5.70	-0.98



## COMMODITIES MARKET SUMMARY

### SELECTED ITEMS

Gold prices edged lower this morning but were on track for their third consecutive quarterly rise. Investors were awaiting key U.S. inflation data due later in the day, which could provide insight into the Federal Reserve's stance on interest rate cuts. Oil prices rose in early Asian trading hours, poised for a third straight weekly increase, as concerns about supply disruptions from escalating geopolitical tensions and weather-related issues outweighed signs of weak demand.

COMMODITY	LAST	CLOSE	% CHG	1D%	5D%	YTD%
Brent Crude	86.85	86.35	0.58	1.36	0.84	12.03
Gold	2322.34	2327.71	-0.23	1.29	-1.37	12.83
Palladium	945.53	936.25	0.99	0.19	0.89	-14.67
Platinum	997.70	990.70	0.71	-2.32	0.63	0.35
Silver	29.05	28.96	0.31	0.66	-5.76	21.74

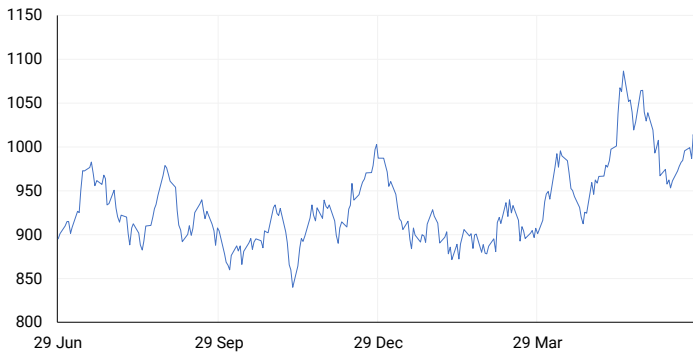
## BRENT CRUDE

One-year



## PLATINUM

One-year



## GOLD

One-year



CURRENCY PAIR	LAST	CLOSE	% CHG	1D%	5D%	YTD%
USDZAR	18.50	18.47	0.17	1.69	2.74	0.81
GBPZAR	23.37	23.35	0.07	1.83	2.60	0.24
EURZAR	19.78	19.78	0.02	1.84	2.73	-2.05
AUDZAR	12.26	12.28	-0.19	1.63	2.60	-1.44
EURUSD	1.07	1.07	-0.12	0.21	0.02	-3.02
USDJPY	160.96	160.78	0.11	-0.02	1.17	14.00
GBPUSD	1.26	1.26	-0.09	0.14	-0.15	-0.73
USDCHF	0.90	0.90	0.06	0.16	0.84	6.80

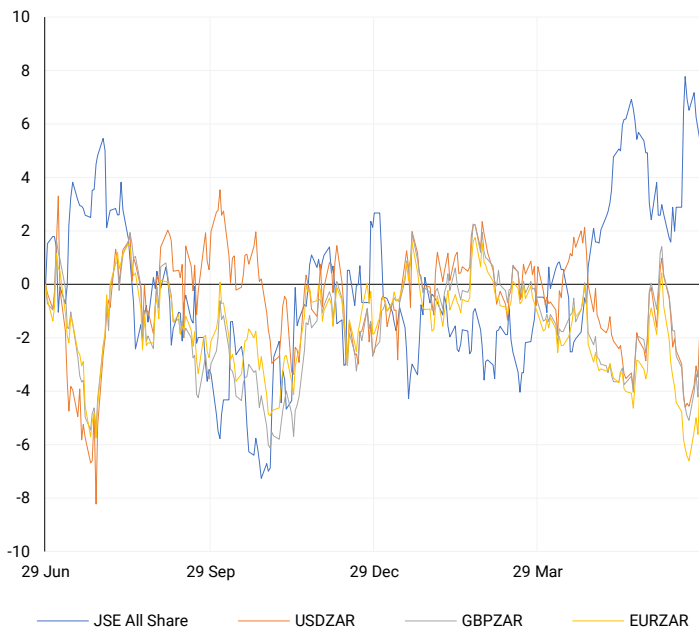
## CURRENCY MARKET SUMMARY

### SELECTED ITEMS

The South African rand plummeted on Thursday following media reports of a significant disagreement between the pro-business Democratic Alliance (DA) party and President Cyril Ramaphosa regarding cabinet appointments. The dollar was on track for a second consecutive quarterly gain and surged to a near four-decade high against the struggling yen in Asia trade this morning, ahead of a crucial U.S. inflation report.

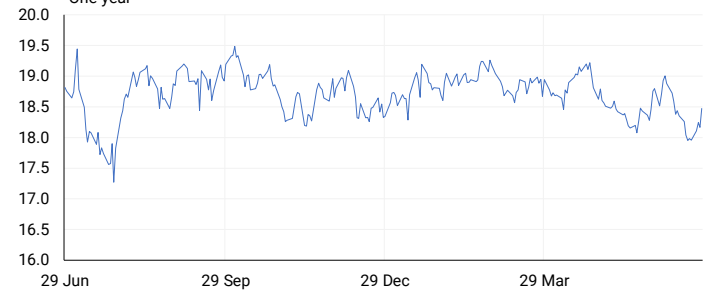
## CURRENCY PAIRS vs JSE ALL SHARE

Normalised percentage performances



## USDZAR

One-year



## EURUSD

One-year



SOURCES | JSE, IRESS, MONEYWEB, CNBC, BBC, CNN

**Disclaimer:** This note is prepared for Sanlam Private Wealth (Pty) Ltd, by K2013143132 (Pty) Ltd trading as ThompsonGreen. ThompsonGreen is an independent company contracted to Sanlam Private Wealth (Pty) Ltd. The views expressed in this note are those of ThompsonGreen and/or its analysts and not necessarily the views of Sanlam Private Wealth (Pty) Ltd, Sanlam or any officer or agent thereof. K2013143132 (Pty) Ltd trading as ThompsonGreen is a research house and not a registered broker, financial adviser or financial service provider. Our editors and customer services teams also do not give personal investment advice. The information in this document is general advice only and may not be appropriate to your particular investment objectives, financial situation or particular needs. Before investing, or if you are in any doubt about your personal situation, you should seek professional advice from a stockbroker or independent financial adviser authorised by the Financial Sector Conduct Authority.