

GLOBAL OVERVIEW | SELECTED INDICES

SOUTH AFRICAN INDICES						
	CLOSE	PREVIOUS	1D%	5D%	1M%	YTD%
All Share	79853.83	79707.11	0.18	-0.51	4.11	3.85
Top 40	72805.61	72979.42	-0.24	-0.96	3.34	3.28
Financial 15	19088.82	18869.35	1.16	1.00	15.84	6.80
Industrial 25	107801.01	108233.21	-0.40	-1.77	0.97	3.94
Resource 10	58602.81	59060.84	-0.78	-0.64	-4.42	1.86
Mid Cap	84241.20	83433.18	0.97	0.22	7.37	4.76
Small Cap	79308.37	77372.25	2.50	1.93	8.23	9.40
Banks	11946.25	11832.72	0.96	0.95	17.32	9.12
Retailers	6756.42	6556.47	3.05	3.37	20.71	8.39
Property (J253) - TR	2064.95	2041.77	1.14	0.46	7.15	10.80

AMERICAN INDICES						
	CLOSE	PREVIOUS	1D%	5D%	1M%	YTD%
Dow Jones	39169.52	39118.86	0.13	-0.61	1.25	3.93
Nasdaq	17879.30	17732.60	0.83	2.19	6.84	19.11
S&P 500	5475.09	5460.48	0.27	0.50	3.74	14.79
US VIX	12.22	12.44	-1.77	-8.33	-5.42	-1.85

EUROPEAN INDICES						
	CLOSE	PREVIOUS	1D%	5D%	1M%	YTD%
CAC 40	7561.13	7479.40	1.09	-1.89	-5.40	0.24
DAX 30	18290.66	18235.45	0.30	-0.19	-1.12	9.19
Eurostoxx 50	4940.10	4892.85	0.97	-0.41	-0.79	9.25
FTSE	8166.76	8164.12	0.03	-1.39	-1.31	5.61

ASIAN INDICES						
	CLOSE	PREVIOUS	1D%	5D%	1M%	YTD%
Hang Seng	17718.61	17718.61	0.00	-1.71	-2.00	3.94
Nikkei 225	39631.06	39583.08	0.12	2.13	2.97	18.43
Shanghai	2994.73	2967.40	0.92	1.07	-2.98	0.67

EARLY MORNING MARKETS						
	LAST	CLOSE	% CHG	1D%	5D%	YTD%
TENCENT	368.20	372.40	-1.13	-0.53	-2.10	28.33
BHP AUS	4312.00	4330.00	-0.42	1.45	2.05	-14.10

NOTE : 5D% and 1M% are rolling percentage moves

INTERNATIONAL ECONOMIC CALENDAR | SELECTED EVENTS

TIME	AREA	TODAY'S EVENTS & RELEASES	PERIOD	EXP.	PREV.
11:00	EA	Inflation Rate y/y Flash	Jun	2.5%	2.6%
11:00	EA	Core Inflation Rate y/y Flash	Jun	2.8%	2.9%
15:30	US	Fed Chair Powell Speech	---	---	---
16:00	US	JOLTs Job Openings	May	7.90M	8.06M
---	---	---	---	---	---

TIME	AREA	PREVIOUS SESSION'S RELEASES	PERIOD	EXP.	ACT.
14:00	ZA	ABSA Manufacturing PMI	Jun	49.5	45.7
14:00	DE	Inflation Rate y/y Prel	Jun	2.3%	2.2%
15:05	ZA	Total New Vehicle Sales	Jun	47.30K	40.07K
16:00	US	ISM Manufacturing PMI	Jun	50.0	48.5
---	---	---	---	---	---

JSE ALL SHARE | BEST AND WORST ONE-DAY PERFORMERS

BEST ONE-DAY % PERFORMERS						
	CODE	CLOSE	1D%	5D%	YTD%	
Brait PLC	BAT	98	11.36	12.64	-46.15	
KAP Limited	KAP	316	10.88	7.12	20.61	
PPC Limited	PPC	351	9.01	-4.88	-12.03	
Altron Limited A	AEL	1408	7.40	1.29	37.37	
Motus Holdings Ltd	MTH	9855	6.67	5.55	-2.91	
Tiger Brands Ltd	TBS	21181	6.45	1.05	5.23	

WORST ONE-DAY % PERFORMERS						
	CODE	CLOSE	1D%	5D%	YTD%	
African Rainbow Cap Inv	AIL	651	-5.65	6.72	33.13	
Anglo American Plat Ltd	AMS	56850	-5.52	-12.01	-41.03	
Northam Platinum Hldgs Ltd	NPH	12033	-5.48	-7.33	-14.31	
Impala Platinum Hlgs Ltd	IMP	8800	-3.05	-6.78	-3.58	
Sibanye Stillwater Ltd	SSW	1916	-2.84	-9.41	-23.05	

DIVIDEND DATA

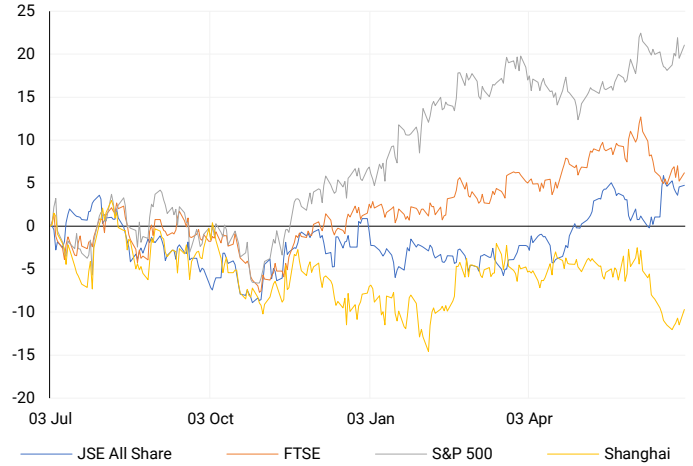
COMPANY	CODE	EXPECTED DIVIDEND	COMPANY	CODE	EXPECTED DIVIDEND
Mr Price Group	MPR	58.8 GBPP	---	---	---
Tiger Brands	TBS	5.7 ZARc	---	---	---
Invicta Holdings	IVTP	210 ZARc	---	---	---
Novus Holdings	NVS	55.2 ZARc	---	---	---
Stor-Age Property REIT	SSS	195 ZARc	---	---	---

SOURCES | JSE, IRESS, MONEYWEB, CNBC, BBC, CNN

PLEASE SEE THE BOTTOM OF THE LAST PAGE FOR THE FULL DISCLAIMER

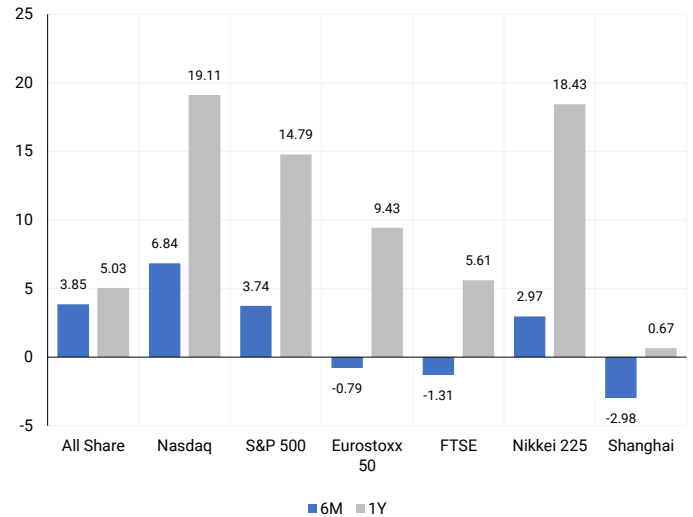
INTERNATIONAL INDICES

Normalised percentage performances - In rand terms



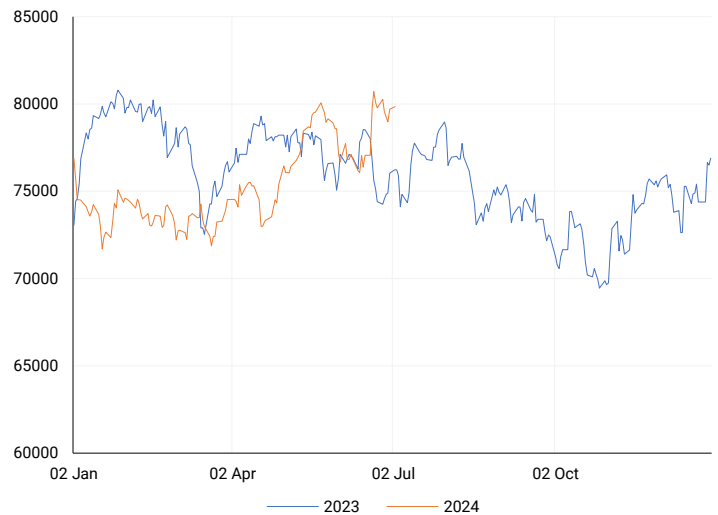
INTERNATIONAL INDICES

6-month & 1-year percentage performances



JSE ALL SHARE INDEX

2023 v 2024 to date



Last date to trade Tue, 02 July

LOCAL EQUITIES | JSE LARGE CAP COMPANIES (Cents Per Share)

COMPANY	CLOSE	PREVIOUS	1D%	5D%	1M%	YTD%
Absa Group Limited	15883	15845	0.24	-8.82	6.48	-2.98
Anglo American plc	56200	57650	-2.52	-2.46	-5.33	18.69
Anglo American Plat Ltd	56850	60172	-5.52	-12.01	-6.89	-41.03
Anglogold Ashanti Ltd	45840	45977	-0.30	4.52	2.46	29.71
Anheuser-Busch InBev SA NV	106797	106317	0.45	-3.49	-8.93	-11.01
BHP Group Limited	52500	52130	0.71	1.62	-5.17	-17.12
BID Corporation Ltd	41375	42487	-2.62	-2.77	-0.50	-3.02
British American Tob plc	56545	56168	0.67	-3.34	-2.34	4.42
Compagnie Fin Richemont	282258	284992	-0.96	-1.50	-5.39	9.93
Capitec Bank Hldgs Ltd	265532	262900	1.00	3.36	24.67	31.04
Discovery Ltd	14002	13469	3.96	4.07	27.65	-2.55
Firststrand Ltd	7762	7690	0.94	3.98	19.42	5.59
Gold Fields Ltd	27165	27342	-0.65	-0.24	-7.19	-2.21
Glencore plc	10677	10434	2.33	0.63	-7.12	-4.37
Impala Platinum Hlgs Ltd	8800	9077	-3.05	-6.78	-8.53	-3.58
Kumba Iron Ore Ltd	44713	43963	1.71	-1.52	-8.80	-27.27
Mondi plc	35146	35200	-0.15	1.84	-5.39	-3.18
MTN Group Ltd	8543	8494	0.58	0.18	4.11	-26.03
Naspers Ltd -N-	346691	356722	-2.81	-5.91	-7.01	10.83
Prosus N.V.	64327	65061	-1.13	-3.99	-4.69	14.79
South32 Limited	4530	4448	1.84	0.87	-8.67	7.37
Standard Bank Group Ltd	21229	21081	0.70	0.14	18.48	2.01
Shoprite Holdings Ltd	29150	28403	2.63	4.33	16.74	5.98
Sanlam Limited	8267	8092	2.16	3.80	16.70	13.56
Sasol Limited	13909	13810	0.72	0.43	12.08	-24.93
Sibanye Stillwater Ltd	1916	1972	-2.84	-9.41	-18.85	-23.05
Vodacom Group Ltd	9560	9751	-1.96	-2.06	3.41	-9.81

SOUTH AFRICAN MARKET SUMMARY

SELECTED ITEMS

On the Johannesburg Stock Exchange, the Top-40 index closed about 0.2% lower. Domestically, a purchasing managers' index survey showed that factory activity contracted again in June, and vehicle sales for the month declined. By Friday, if all goes well, South Africa will have experienced 100 days without load shedding, significantly improving the business environment compared to last year. The Financial Sector Conduct Authority (FSCA) intensified its efforts against financial scammers, imposing nearly 10 times more administrative penalties in the year to March 2024.

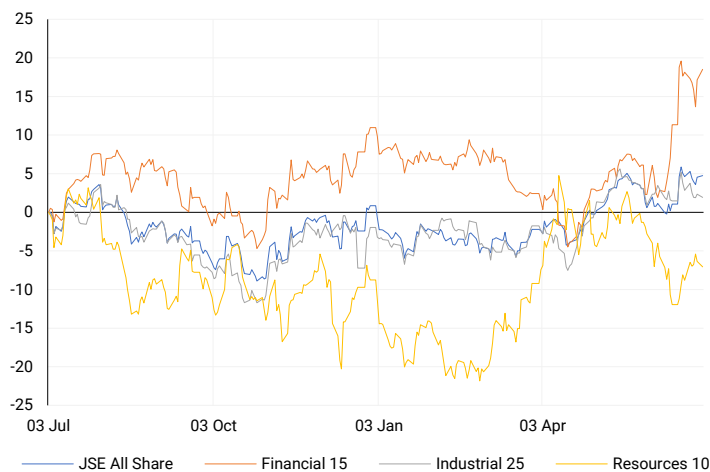
JSE ALL SHARE

One-year



LOCAL INDICES

Normalised percentage performances



LOCAL SENS ANNOUNCEMENTS

SELECTED RELEASE

SABLE EXPLORATION AND MINING LIMITED – Financial results

The company's financial results for the year ending February 29, 2024, show a significant improvement in total equity, rising to R5.6 million from a negative R35.5 million in 2023. However, the total comprehensive loss for the year increased by 49.7% to R11.2 million. The basic and headline loss per share both improved, dropping by 70% to 51.45 cents from 171.88 cents the previous year. The number of shares in issue at year-end increased dramatically to 56 564 742 from 4 351 134.

SXM | 0.00% OPEN | 100c HIGH | 100c LOW | 100c CLOSE | 100c TIME | 07:30

CLICKS GROUP LIMITED – Disposal of Shareholding in Unicorn Pharmaceuticals

Clicks Group proposed to regularize its position by selling its shareholding in Unicorn Pharmaceuticals, a manufacturing pharmacy, which the Director General accepted on June 27, 2024. Clicks Group management is confident that the sale will be completed by the end of July 2024. CEO Bertina Englebrect welcomed the resolution of this legal process and acknowledged the positive engagement of the Director General, the Department of Health (DoH), and their legal advisers. The DoH had advised Clicks Group in May 2023 that no new retail pharmacy license applications could be processed until compliance with a Constitutional Court judgment was confirmed. Engelbrecht stated that the completion of the Unicorn disposal will enable the DoH to issue outstanding and new pharmacy licenses, supporting the growth and expansion of the Clicks pharmacy network to provide high-quality, affordable, and accessible healthcare to more South Africans.

SXM | -0.44% OPEN | 34677c HIGH | 35299c LOW | 34257c CLOSE | 34286c TIME | 14:47

EXPECTED COMPANY REPORTING SCHEDULE

COMPANY	CODE	RELEASE	DATE
Sebata	SEB	Final	15 Jul '24
Anglo American Platinum	AMS	Interim	24 Jul '24
Kumba Iron Ore	KIO	Interim	25 Jul '24
British American Tobacco	BTI	Interim	25 Jul '24
Kumba Iron Ore	KIO	Interim	25 Jul '24

BANK AND OTHER SELECTE PREFERENCE SHARES

COMPANY	CODE	CLOSE	CLEAN YIELD	NEXT LDT (Est.)
Investec Limited	INPR	8407	11.24	Thu, 06 Jun '24
Standard Bank	SBPP	8700	11.15	Thu, 05 Sep '24
Absa	ABSP	74420	11.48	Thu, 12 Sep '24
Capitec	CPIP	10000	9.69	Thu, 19 Sep '24
Steinhoff	SHFF	9734	10.47	Thu, 17 Oct '24
Grindrod	GNDP	9299	12.22	Thu, 19 Sep '24
Netcare	NTCP	7970	11.82	Thu, 31 Oct '24
Discovery	DSBP	9599	11.91	Thu, 19 Sep '24
Invicta	IVTP	11050	13.41	Thu, 27 Jun '24

LOCAL EQUITIES | JSE MID CAP COMPANIES (Cents Per Share)

COMPANY	CODE	CLOSE	PREVIOUS	1D%	1M%	YTD%
Aspen Pharmacare Hldgs Ltd	APN	22835	23331	-2.13	-1.73	12.21
African Rainbow Min Ltd	ARI	22605	22700	-0.42	0.09	13.03
AVI Ltd	AVI	9706	9459	2.61	14.42	18.26
Barloworld Ltd	BAW	8500	8380	1.43	-5.73	7.59
Bidvest Ltd	BVT	28925	28444	1.69	17.76	14.65
Bytes Technology Grp PLC	BYI	12636	12638	-0.02	-5.23	-11.77
Capital&Counties Prop plc	CCO	3240	3208	1.00	-6.82	-0.31
Clicks Group Ltd	CLS	34286	34436	-0.44	15.93	5.27
Dis-Chem Pharmacies Ltd	DCP	3400	3366	1.01	8.70	10.79
Distell Group Hldgs Ltd	DGH	95	95	0.00	7.95	10.47
Exxaro Resources Ltd	EXX	17946	17800	0.82	-1.09	-12.24
Fortress Real Est INV B	FFB	1659	1652	0.42	9.87	15.53
Growthpoint Prop Ltd	GRT	1239	1218	1.72	12.74	6.08
Harmony GM Co Ltd	HAR	16790	16805	-0.09	-1.76	40.40
Hammerson plc	HMM	650	639	1.72	-1.22	-4.41
Investec Ltd	INL	13489	13228	1.97	9.63	7.41
Investec plc	INP	13590	13230	2.72	10.39	7.90
Italtile Ltd	ITE	1159	1107	4.70	22.65	3.48
Life Healthc Grp Hldgs Ltd	LHC	1293	1285	0.62	16.80	-29.61
MultiChoice Group Ltd	MCG	10785	10660	1.17	-4.18	33.12
Montauk Renewables Inc	MKR	10400	10700	-2.80	4.00	-39.53
Mr Price Group Ltd	MRP	20975	20592	1.86	18.17	33.76
Momentum Met Hldgs Ltd	MTM	2348	2290	2.53	10.34	7.26
Ninety One Plc	N91	3919	3850	1.79	-2.56	-9.11
Nedbank Group Ltd	NED	25979	25641	1.32	13.70	20.15
Northam Platinum Hldgs Ltd	NPH	12033	12730	-5.48	-7.24	-14.31
NEPI Rockcastle N.V.	NRP	12918	13137	-1.67	-0.49	2.22
Netcare Limited	NTC	1304	1274	2.35	15.81	-8.43
Ninety One Limited	NY1	3867	3800	1.76	-2.62	-10.01
Old Mutual Limited	OMU	1260	1239	1.69	18.53	-3.52
OUTsurance Group Ltd	OUT	4595	4642	-1.01	14.73	8.89
Pick n Pay Stores Ltd	PIK	2599	2571	1.09	4.63	11.69
Pepkor Holdings Ltd	PPH	1956	1873	4.43	15.19	-0.36
Quilter Plc	QLT	2746	2761	-0.54	-1.44	13.10
Redefine Properties Ltd	RDF	424	402	5.47	18.11	10.13
Remgro Ltd	REM	14082	13609	3.48	16.67	-13.33
Resilient REIT Limited	RES	4831	4686	3.09	13.27	9.08
Reinet Investments S.C.A	RNI	45530	45950	-0.91	-3.83	-2.34
Sappi Ltd	SAP	5136	4854	5.81	-4.07	16.20
Santam Limited	SNT	33698	32569	3.47	12.83	17.59
The Spar Group Ltd	SPP	12200	11837	3.07	17.33	3.48
Sirius Real Estate Ltd	SRE	2164	2160	0.19	-6.36	-2.30
Tiger Brands Ltd	TBS	21181	19897	6.45	8.62	5.23
Transaction Capital Ltd	TCP	298	290	2.76	20.16	-62.66
The Foschini Group Limited	TFG	12878	12751	1.00	35.56	16.06
Thungela Resources Ltd	TGA	11376	11146	2.06	-15.42	-26.03
Telkom SA SOC Ltd	TKG	2401	2451	-2.04	1.14	-19.27
Truworths Int Ltd	TRU	9679	9328	3.76	26.89	30.18
Woolworths Holdings Ltd	WHL	6359	6178	2.93	16.79	-11.93
Zeda Limited	ZZD	1293	1235	4.70	9.58	1.41

LOCAL EQUITIES | JSE SMALL CAP COMPANIES (Cents Per Share)

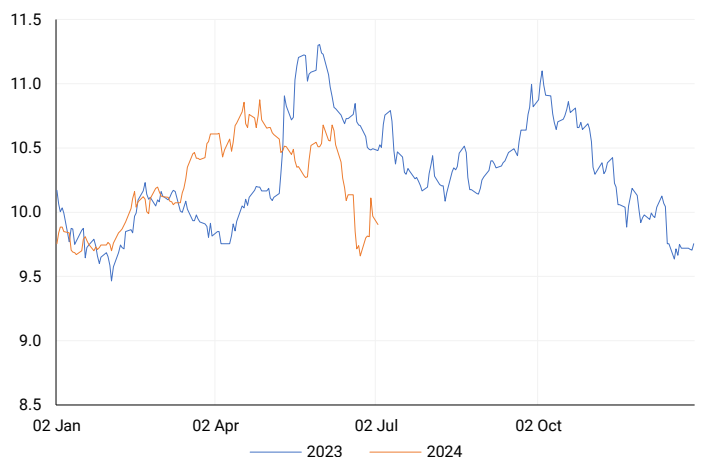
COMPANY	CODE	CLOSE	PREVIOUS	1D%	1M%	YTD%
ArcelorMittal SA Limited	ACL	124	119	4.20	14.81	-24.39
ADVTECH Ltd	ADH	2950	2830	4.24	13.46	20.21
Altron Limited A	AEL	1408	1311	7.40	9.57	37.37
AECI Limited	AFE	10899	10803	0.89	13.88	-0.64
Alexander Forbes Grp Hldgs	AFH	720	738	-2.44	12.50	9.09
Afrimat Limited	AFT	7348	7079	3.80	4.29	16.63
African Rainbow Cap Inv	AIL	651	690	-5.65	16.25	33.13
Adcock Ingram Hldgs Ltd	AIP	6100	6010	1.50	7.43	1.50
Astral Foods Ltd	ARL	16699	16374	1.98	19.52	13.93
Attacq Limited	ATT	1107	1085	2.03	10.92	20.07
Brait PLC	BAT	98	88	11.36	-14.78	-46.15
Blue Label Telecoms Ltd	BLU	405	390	3.85	-5.81	4.38
Coronation Fund Mngrs Ld	CML	3655	3590	1.81	5.12	17.30
Curro Holdings Limited	COH	1173	1127	4.08	9.52	0.69
Cashbuild Ltd	CSB	15983	15381	3.91	10.99	-4.25
DRD Gold Ltd	DRD	1583	1570	0.83	0.00	0.38
Datatec Ltd	DTC	3750	3750	0.00	0.56	-7.41
Emira Property Fund Ltd	EMI	1065	1033	3.10	12.11	24.56
Equites Prop Fund Ltd	EQU	1267	1279	-0.94	-2.31	-9.18
Famous Brands Ltd	FBR	5393	5221	3.29	8.14	-6.90
Fairvest Limited B	FTB	395	385	2.60	2.60	14.83
Grindrod Ltd	GND	1575	1504	4.72	16.67	37.43
Hosken Cons Inv Ltd	HCI	17800	17543	1.46	7.97	-12.14
Hudaco Industries Ltd	HDC	17800	16950	5.01	7.86	10.81
Hyprop Inv Ltd	HYP	3288	3140	4.71	20.18	5.69
Investec Property Fund Ltd	IPF	713	718	-0.70	-2.86	-10.88
JSE Ltd	JSE	10780	10875	-0.87	17.12	16.62
KAP Industrial Hldgs Ltd	KAP	316	285	10.88	24.90	20.61
Karooooo Ltd	KRO	53900	54000	-0.19	-2.00	13.48
PSG Konsult Limited	KST	1740	1734	0.35	7.41	13.36
Libstar Holdings Ltd	LBR	360	390	-7.69	-1.37	2.86
Lighthouse Properties plc	LTE	800	798	0.25	1.91	8.84
Industrials REIT Limited	MLI	0.4	0.4	0.00	-20.00	-42.86
MAS P.L.C	MSP	1620	1620	0.00	-5.65	-6.41
Metair Investments Ltd	MTA	1098	1100	-0.18	-0.09	-38.14
Motus Holdings Ltd	MTH	9855	9239	6.67	14.42	-2.91
Murray & Roberts Hldgs	MUR	217	214	1.40	11.86	45.64
Oceana Group Ltd	OCE	7319	7185	1.86	0.56	3.57
Omnia Holdings Ltd	OMN	6847	6619	3.44	22.01	4.74
Pan African Resource plc	PAN	614	605	1.49	2.16	50.12
PPC Limited	PPC	351	322	9.01	4.78	-12.03
Raubex Group Ltd	RBX	4230	4000	5.75	18.29	52.60
RFG Holdings Limited	RFG	1590	1578	0.76	13.73	17.78
Reunert Ltd	RLO	7296	7024	3.87	6.67	21.72
SA Corp Real Estate Ltd	SAC	264	259	1.93	5.18	13.79
Super Group Ltd	SPG	2929	2827	3.61	8.04	-1.55
Stor-Age Prop REIT Ltd	SSS	1406	1385	1.52	4.69	7.66
Southern Sun LTD	SSU	550	530	3.77	4.36	4.76
Sun International Ltd	SUI	3805	3698	2.89	3.03	-7.20
Tharisa plc	THA	1950	1921	1.51	8.64	29.05
Tsogo Sun Gaming Ltd	TSG	1138	1107	2.80	7.77	-7.10
Vukile Property Fund Ltd	VKE	1578	1530	3.14	7.57	11.76
Wilson Bayly Hlm-Ovc Ltd	WBO	16528	16008	3.25	9.67	27.08

10-YEAR BOND YIELD | SELECTED ITEMS (Basis Point Change)

REGION	YIELD	1D	1M	1Y
United States	4.45%	5	-5	--
United Kingdom	4.28%	11	-4	-10
Germany	2.60%	11	-6	21
Japan	1.06%	2	1	--
South African 10Y	10.18%	-3	-65	-33

SOUTH AFRICAN 10-YEAR

2023 vs 2024 to date

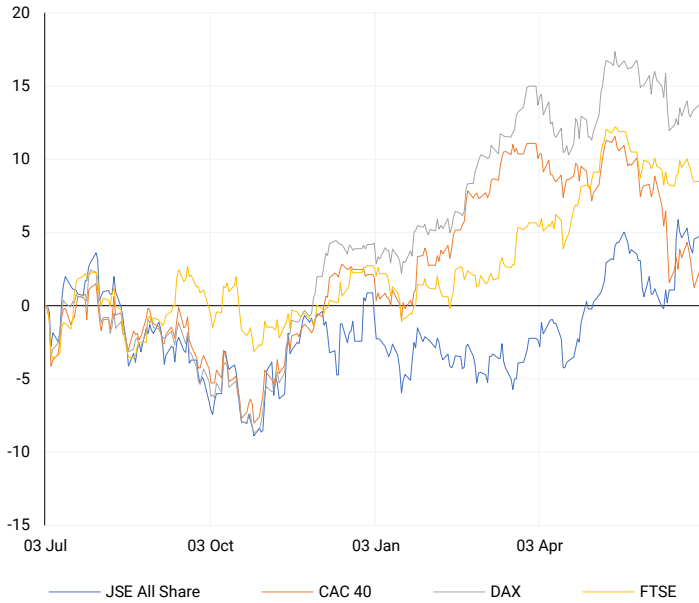


GLOBAL INTEREST RATES | SELECTED ITEMS

REGION	DATE CHANGED	CURRENT RATE
United States	Wed, 26 Jul '23	5.25%-5.50%
United Kingdom	Thu, 03 Aug '23	5.25%
European	Thu, 27 Jul '23	4.25%
SA Repo Rate	Thu, 25 May '23	8.25%
SA Prime Rate	Thu, 25 May '23	11.75%

EUROPEAN INDICES

Normalised percentage performances



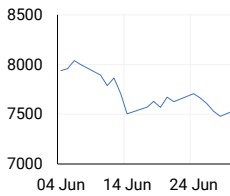
EUROPEAN MARKET SUMMARY

SELECTED ITEMS

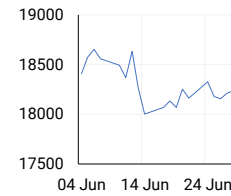
European stocks rose on Monday, with French shares leading the way after the far-right National Rally (RN) party made historic gains in the first round of parliamentary elections, though by a smaller margin than expected. However, stocks came off session highs after a survey showed a sharp decline in euro zone manufacturing activity as demand fell despite factories reducing prices. Additionally, inflation data indicated a drop in five key German states in June, suggesting a potential national decline. Markets are now looking forward to ECB President Christine Lagarde's comments after market close and euro zone inflation data on Tuesday.

EUROPEAN INDICES	CLOSE	PREVIOUS	1D%	5D%	1M%	YTD%
CAC 40	7561.13	7479.40	1.09	-1.89	-5.40	0.24
DAX 30	18290.66	18235.45	0.30	-0.19	-1.12	9.19
Eurostoxx 50	4940.10	4892.85	0.97	-0.41	-0.79	9.25
FTSE	8166.76	8164.12	0.03	-1.39	-1.31	5.61

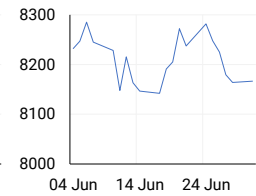
CAC 40



DAX



FTSE



AMERICAN INDICES

Normalised percentage performances



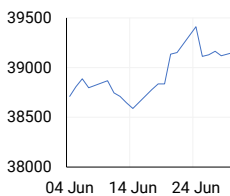
AMERICAN MARKET SUMMARY

SELECTED ITEMS

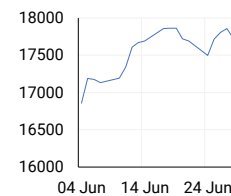
Megacap growth stocks, led by Apple and Tesla, pushed the tech-heavy Nasdaq to a higher close on Monday, with the Dow and S&P 500 also seeing slight gains in light pre-holiday trading. Investors are anticipating U.S. labour market data later this week for insights into the interest rate outlook. Apple climbed 2.9%, Microsoft rose 2%, and Amazon.com increased by 2.2%, boosting the Nasdaq. Key economic data releases this week include JOLTS job openings on Tuesday, and ADP employment, factory orders, ISM services PMI, and Fed meeting minutes on Wednesday, with non-farm payroll data due on Friday.

AMERICAN INDICES	CLOSE	PREVIOUS	1D%	5D%	1M%	YTD%
Dow Jones	39169.52	39118.86	0.13	-0.61	1.25	3.93
Nasdaq	17879.30	17732.60	0.83	2.19	6.84	19.11
S&P 500	5475.09	5460.48	0.27	0.50	3.74	14.79
US VIX	12.22	12.44	-1.77	-8.33	-5.42	-1.85

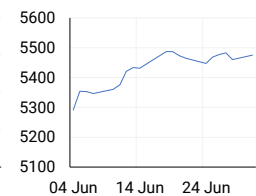
DOW JONES



NASDAQ

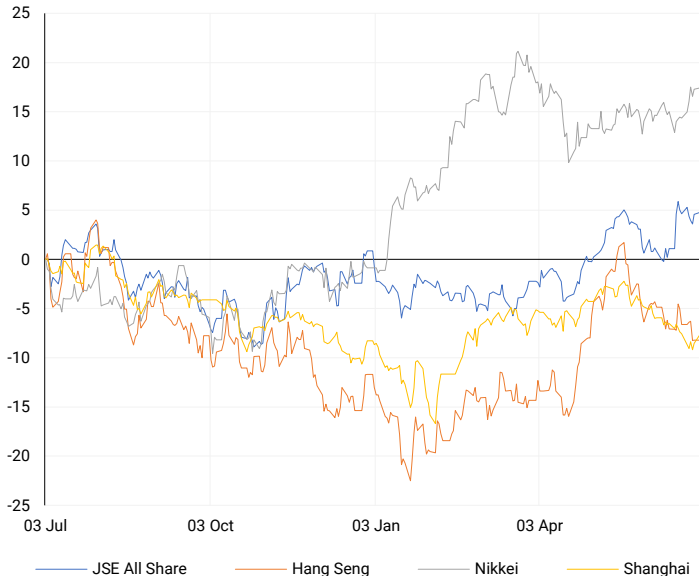


S&P 500



ASIAN INDICES

Normalised percentage performances



ASIAN MARKET SUMMARY

SELECTED ITEMS

Asia-Pacific markets mostly declined this morning as traders assessed South Korea's inflation rate for June, which came in at 2.4%, below the expected 2.7%. Japan's Nikkei 225 rose 0.64% and the Topix increased 1.05%. Meanwhile, the Japanese yen weakened to a 38-year low against the dollar, hitting 161.67. South Korea's Kospi fell 0.68% and the Kosdaq dropped 1.44% following the inflation data. Hong Kong's Hang Seng index gained 0.6%, while Mainland China's CSI 300 dipped 0.15%.

ASIAN INDICES	CLOSE	PREVIOUS	1D%	5D%	1M%	YTD%
Hang Seng	17718.61	17718.61	0.00	-1.71	-2.00	3.94
Nikkei 225	39631.06	39583.08	0.12	2.13	2.97	18.43
Shanghai	2994.73	2967.40	0.92	1.07	-2.98	0.67

HANG SENG



NIKKEI



SHANGHAI



COMMODITIES MARKET SUMMARY

SELECTED ITEMS

Gold prices remained steady this morning as investors awaited comments from Federal Reserve Chair Jerome Powell and upcoming jobs data for clues on the central bank's interest rate outlook. Similarly, oil prices were largely unchanged, staying near the two-month highs reached in the previous session. This stability is due to expectations of increased fuel demand from the summer travel season and potential U.S. interest rate cuts that could spur economic growth.

COMMODITY	LAST	CLOSE	% CHG	1D%	5D%	YTD%
Brent Crude	86.80	86.63	0.20	0.27	0.62	12.39
Gold	2328.58	2331.93	-0.14	0.23	-0.11	13.04
Palladium	985.06	983.25	0.18	0.79	0.25	-10.39
Platinum	979.70	981.30	-0.16	-1.51	-1.79	-0.60
Silver	29.37	29.44	-0.24	1.06	-0.44	23.76

BRENT CRUDE

One-year



PLATINUM

One-year



GOLD

One-year



CURRENCY PAIR	LAST	CLOSE	% CHG	1D%	5D%	YTD%
USDZAR	18.39	18.37	0.14	1.01	1.42	0.23
GBPZAR	23.23	23.21	0.10	0.88	1.03	-0.37
EURZAR	19.73	19.73	0.00	1.20	1.48	-2.29
AUDZAR	12.21	12.23	-0.19	0.80	1.50	-1.79
EURUSD	1.07	1.07	-0.12	0.26	0.07	-2.69
USDJPY	161.64	161.47	0.10	0.37	1.16	14.49
GBPUSD	1.26	1.27	-0.13	0.04	-0.28	-0.64
USDCHF	0.90	0.90	0.13	0.44	1.09	7.27

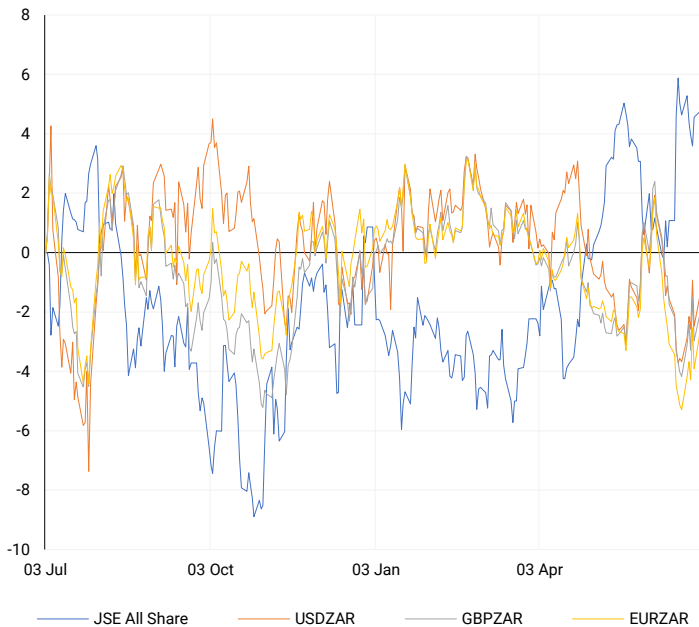
CURRENCY MARKET SUMMARY

SELECTED ITEMS

South Africa's rand strengthened in early trade on Monday after President Cyril Ramaphosa announced his new coalition cabinet, which includes the leader of the former opposition Democratic Alliance (DA) as the new agriculture minister. The U.S. dollar hovered near a nearly 38-year high against the yen this morning, following a surge in Treasury yields as investors considered the potential implications of a second Donald Trump presidency.

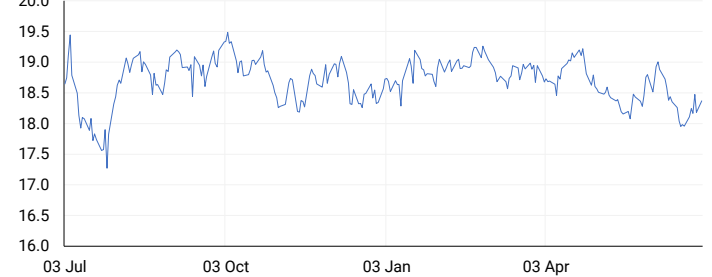
CURRENCY PAIRS vs JSE ALL SHARE

Normalised percentage performances



USDZAR

One-year



EURUSD

One-year



SOURCES | JSE, IRESS, MONEYWEB, CNBC, BBC, CNN

Disclaimer: This note is prepared for Sanlam Private Wealth (Pty) Ltd, by K2013143132 (Pty) Ltd trading as ThompsonGreen. ThompsonGreen is an independent company contracted to Sanlam Private Wealth (Pty) Ltd. The views expressed in this note are those of ThompsonGreen and/or its analysts and not necessarily the views of Sanlam Private Wealth (Pty) Ltd, Sanlam or any officer or agent thereof. K2013143132 (Pty) Ltd trading as ThompsonGreen is a research house and not a registered broker, financial adviser or financial service provider. Our editors and customer services teams also do not give personal investment advice. The information in this document is general advice only and may not be appropriate to your particular investment objectives, financial situation or particular needs. Before investing, or if you are in any doubt about your personal situation, you should seek professional advice from a stockbroker or independent financial adviser authorised by the Financial Sector Conduct Authority.