

GLOBAL OVERVIEW | SELECTED INDICES

SOUTH AFRICAN INDICES						
	CLOSE	PREVIOUS	1D%	5D%	1M%	YTD%
All Share	79435.12	79853.83	-0.52	-0.18	3.56	3.31
Top 40	72556.50	72805.61	-0.34	-0.48	2.98	2.92
Financial 15	18769.00	19088.82	-1.68	-0.21	13.90	5.01
Industrial 25	107672.36	107801.01	-0.12	-0.69	0.85	3.81
Resource 10	59073.01	58602.81	0.80	0.70	-3.65	2.68
Mid Cap	83022.28	84241.20	-1.45	-0.28	5.82	3.24
Small Cap	78651.05	79308.37	-0.83	1.92	7.33	8.49
Banks	11730.78	11946.25	-1.80	-0.57	15.20	7.15
Retailers	6592.77	6756.42	-2.42	1.83	17.79	5.76
Property (J253) - TR	2054.84	2064.95	-0.49	1.47	6.63	10.26

AMERICAN INDICES						
	CLOSE	PREVIOUS	1D%	5D%	1M%	YTD%
Dow Jones	39331.85	39169.52	0.41	0.56	1.67	4.36
Nasdaq	18028.76	17879.30	0.84	1.76	7.73	20.10
S&P 500	5509.01	5475.09	0.62	0.73	4.39	15.50
US VIX	12.03	12.22	-1.55	-6.31	-6.89	-3.37

EUROPEAN INDICES						
	CLOSE	PREVIOUS	1D%	5D%	1M%	YTD%
CAC 40	7538.29	7561.13	-0.30	-1.62	-5.69	-0.06
DAX 30	18164.06	18290.66	-0.69	-0.07	-1.80	8.43
Eurostoxx 50	4907.10	4940.10	-0.67	-0.57	-1.45	8.52
FTSE	8121.20	8166.76	-0.56	-1.53	-1.86	5.02

ASIAN INDICES						
	CLOSE	PREVIOUS	1D%	5D%	1M%	YTD%
Hang Seng	17769.14	17718.61	0.29	-1.68	-1.72	4.23
Nikkei 225	40074.69	39631.06	1.12	2.30	4.12	19.75
Shanghai	2997.01	2994.73	0.08	1.59	-2.91	0.74

EARLY MORNING MARKETS						
	LAST	CLOSE	% CHG	1D%	5D%	YTD%
TENCENT	374.88	369.20	1.54	-0.86	-3.35	27.22
BHP AUS	4350.00	4316.00	0.79	-0.32	-0.37	-14.38

NOTE : 5D% and 1M% are rolling percentage moves

INTERNATIONAL ECONOMIC CALENDAR | SELECTED EVENTS

TIME	AREA	TODAY'S EVENTS & RELEASES	PERIOD	EXP.	PREV.
9:15	ZA	S&P Global PMI	Jun	50.2	50.4
14:15	US	ADP Employment Change	Jun	100.0K	152.0K
14:30	US	Initial Jobless Claims	Jun	235.0K	233.0K
16:00	US	ISM Services PMI	Jun	53.5	53.8
20:00	US	FOMC Minutes	---	---	---

TIME	AREA	PREVIOUS SESSION'S RELEASES	PERIOD	EXP.	ACT.
11:00	EA	Inflation Rate y/y Flash	Jun	2.5%	2.5%
11:00	EA	Core Inflation Rate y/y Flash	Jun	2.8%	2.9%
15:30	US	Fed Chair Powell Speech	---	---	---
16:00	US	JOLTs Job Openings	May	7.90M	8.14M
---	---	---	---	---	---

JSE ALL SHARE | BEST AND WORST ONE-DAY PERFORMERS

BEST ONE-DAY % PERFORMERS						
	CODE	CLOSE	1D%	5D%	YTD%	
Karoo000 Ltd	KRO	56995	5.74	-7.25	19.99	
PPC Limited	PPC	370	5.41	0.27	-7.27	
Brait PLC	BAT	102	4.08	18.60	-43.96	
BID Corporation Ltd	BID	42834	3.53	0.09	0.40	
Pan African Resource plc	PAN	635	3.42	3.42	55.26	
MAS P.L.C	MSP	1675	3.40	3.65	-3.24	

WORST ONE-DAY % PERFORMERS						
	CODE	CLOSE	1D%	5D%	YTD%	
Oceana Group Ltd	OCE	6875	-6.07	-7.09	-2.72	
Telkom SA SOC Ltd	TKG	2275	-5.25	-5.64	-23.50	
Netcare Limited	NTC	1245	-4.52	-1.97	-12.57	
MTN Group Ltd	MTN	8200	-4.01	-2.99	-29.00	
Montauk Renewables Inc	MKR	10000	-3.85	0.16	-41.86	

DIVIDEND DATA

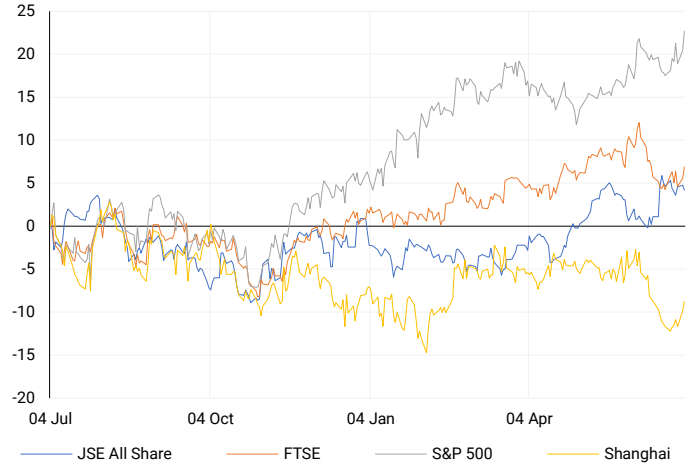
COMPANY	CODE	EXPECTED DIVIDEND	COMPANY	CODE	EXPECTED DIVIDEND
Mr Price Group	MPR	58.8 GBpp	---	---	---
Tiger Brands	TBS	5.7 ZARc	---	---	---
Invicta Holdings	IVTP	210 ZARc	---	---	---
Novus Holdings	NVS	55.2 ZARc	---	---	---
Stor-Age Property REIT	SSS	195 ZARc	---	---	---

SOURCES | JSE, IRESS, MONEYWEB, CNBC, BBC, CNN

PLEASE SEE THE BOTTOM OF THE LAST PAGE FOR THE FULL DISCLAIMER

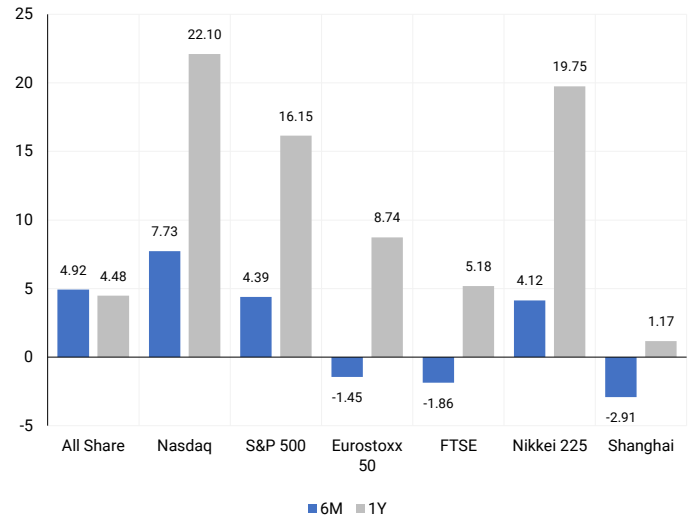
INTERNATIONAL INDICES

Normalised percentage performances - In rand terms



INTERNATIONAL INDICES

6-month & 1-year percentage performances



JSE ALL SHARE INDEX

2023 v 2024 to date



Ex div Wed, 03 July

LOCAL EQUITIES | JSE LARGE CAP COMPANIES (Cents Per Share)

COMPANY	CLOSE	PREVIOUS	1D%	5D%	1M%	YTD%
Absa Group Limited	15461	15883	-2.66	-10.13	3.65	-5.56
Anglo American plc	55901	56200	-0.53	-3.59	-5.84	18.06
Anglo American Plat Ltd	57000	56850	0.26	-8.49	-6.64	-40.87
Anglogold Ashanti Ltd	47053	45840	2.65	6.01	5.17	33.14
Anheuser-Busch InBev SA NV	109184	106797	2.24	0.32	-6.90	-9.02
BHP Group Limited	53164	52500	1.26	2.96	-3.97	-16.07
BID Corporation Ltd	42834	41375	3.53	0.09	3.01	0.40
British American Tob plc	57206	56545	1.17	-1.55	-1.20	5.64
Compagnie Fin Richemont	289050	282258	2.41	-0.90	-3.12	12.58
Capitec Bank Hldgs Ltd	262900	265532	-0.99	2.22	23.43	29.74
Discovery Ltd	13755	14002	-1.76	1.36	25.40	-4.27
Firststrand Ltd	7625	7762	-1.77	1.84	17.31	3.73
Gold Fields Ltd	27485	27165	1.18	1.62	-6.09	-1.05
Glencore plc	10936	10677	2.43	4.41	-4.86	-2.05
Impala Platinum Hlgs Ltd	8655	8800	-1.65	-4.93	-10.04	-5.17
Kumba Iron Ore Ltd	44868	44713	0.35	0.75	-8.48	-27.02
Mondi plc	35283	35146	0.39	2.87	-5.02	-2.80
MTN Group Ltd	8200	8543	-4.01	-2.99	-0.07	-29.00
Naspers Ltd -N-	349476	346691	0.80	-1.96	-6.26	11.73
Prosus N.V.	65250	64327	1.43	-0.44	-3.32	16.44
South32 Limited	4603	4530	1.61	3.65	-7.20	9.10
Standard Bank Group Ltd	20776	21229	-2.13	-1.38	15.95	-0.16
Shoprite Holdings Ltd	28538	29150	-2.10	0.86	14.29	3.76
Sanlam Limited	8149	8267	-1.43	3.20	15.03	11.94
Sasol Limited	13843	13909	-0.47	1.74	11.55	-25.29
Sibanye Stillwater Ltd	1890	1916	-1.36	-5.50	-19.95	-24.10
Vodacom Group Ltd	9348	9560	-2.22	-2.22	1.11	-11.81

SOUTH AFRICAN MARKET SUMMARY

SELECTED ITEMS

On the Johannesburg Stock Exchange, the blue-chip Top-40 index closed down by 0.3%. Meanwhile, French oil major TotalEnergies has informed South Africa's petroleum regulator of its intent to withdraw from the 11B/12B offshore gas field, though a formal request has not been submitted, according to a source at Petroleum Agency SA. Additionally, South Africa's Impala Platinum reported a strike at its recently acquired Bafokeng operations in Rustenburg, mainly involving contractors demanding permanent positions.

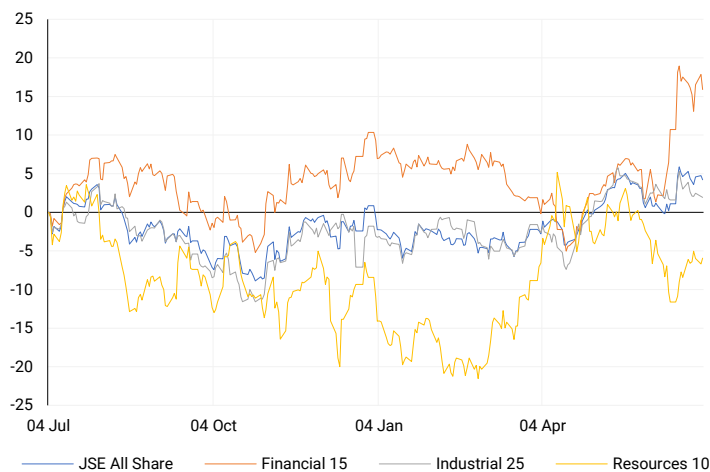
JSE ALL SHARE

One-year



LOCAL INDICES

Normalised percentage performances



LOCAL SENS ANNOUNCEMENTS

SELECTED RELEASE

ARCELORMITTAL SOUTH AFRICA LIMITED – Trading Statement

The company informs shareholders that it expects earnings per share to drop from a loss of R0.32 per share in the previous period to a loss between R1.04 and R1.10 per share for the current period. Similarly, headline earnings per share are expected to decrease from a loss of R0.40 per share to a loss between R0.96 and R1.04 per share for the current period.

ACL -4.84% OPEN | 120c HIGH | 124c LOW | 103c CLOSE | 118c TIME | 09:00

EXPECTED COMPANY REPORTING SCHEDULE

COMPANY	CODE	RELEASE	DATE
Seбата	SEB	Final	15 Jul '24
Anglo American Platinum	AMS	Interim	24 Jul '24
Kumba Iron Ore	KIO	Interim	25 Jul '24
British American Tobacco	BTI	Interim	25 Jul '24
Kumba Iron Ore	KIO	Interim	25 Jul '24

BANK AND OTHER SELECTE PREFERENCE SHARES

COMPANY	CODE	CLOSE	CLEAN YIELD	NEXT LDT (Est.)
Investec Limited	INPR	8429	11.24	Thu, 06 Jun '24
Standard Bank	SBPP	8680	11.15	Thu, 05 Sep '24
Absa	ABSP	73560	11.48	Thu, 12 Sep '24
Capitec	CPIP	10000	9.69	Thu, 19 Sep '24
Steinhoff	SHFF	9734	10.47	Thu, 17 Oct '24
Grindrod	GNDP	9010	12.22	Thu, 19 Sep '24
Netcare	NTCP	7969	11.82	Thu, 31 Oct '24
Discovery	DSBP	9600	11.91	Thu, 19 Sep '24
Invicta	IVTP	11040	13.41	Thu, 27 Jun '24

LOCAL EQUITIES | JSE MID CAP COMPANIES (Cents Per Share)

COMPANY	CODE	CLOSE	PREVIOUS	1D%	1M%	YTD%
Aspen Pharmacare Hldgs Ltd	APN	22995	22835	0.70	-1.04	13.00
African Rainbow Min Ltd	ARI	21763	22605	-3.72	-3.64	8.82
AVI Ltd	AVI	9548	9706	-1.63	12.55	16.34
Barloworld Ltd	BAW	8700	8500	2.35	-3.52	10.13
Bidvest Ltd	BVT	28183	28925	-2.57	14.74	11.71
Bytes Technology Grp PLC	BYI	12829	12636	1.53	-3.78	-10.42
Capital&Counties Prop plc	CCO	3297	3240	1.76	-5.18	1.45
Clicks Group Ltd	CLS	33655	34286	-1.84	13.79	3.33
Dis-Chem Pharmacies Ltd	DCP	3350	3400	-1.47	7.10	9.16
Distell Group Hldgs Ltd	DGH	95	95	0.00	7.95	10.47
Exxaro Resources Ltd	EXX	18168	17946	1.24	0.14	-11.15
Fortress Real Est INV B	FFB	1655	1659	-0.24	9.60	15.25
Growthpoint Prop Ltd	GRT	1206	1239	-2.66	9.74	3.25
Harmony GM Co Ltd	HAR	17255	16790	2.77	0.96	44.28
Hammerson plc	HMN	654	650	0.62	-0.61	-3.82
Investec Ltd	INL	13332	13489	-1.16	8.36	6.15
Investec plc	INP	13437	13590	-1.13	9.15	6.69
Italtile Ltd	ITE	1135	1159	-2.07	20.11	1.34
Life Healthc Grp Hldgs Ltd	LHC	1293	1293	0.00	16.80	-29.61
MultiChoice Group Ltd	MCG	10642	10785	-1.33	-5.45	31.35
Montauk Renewables Inc	MKR	10000	10400	-3.85	0.00	-41.86
Mr Price Group Ltd	MRP	20500	20975	-2.26	15.49	30.73
Momentum Met Hldgs Ltd	MTM	2337	2348	-0.47	9.82	6.76
Ninety One Plc	N91	3987	3919	1.74	-0.87	-7.54
Nedbank Group Ltd	NED	25398	25979	-2.24	11.16	17.46
Northam Platinum Hldgs Ltd	NPH	11685	12033	-2.89	-9.92	-16.79
NEPI Rockcastle N.V.	NRP	13100	12918	1.41	0.91	3.66
Netcare Limited	NTC	1245	1304	-4.52	10.57	-12.57
Ninety One Limited	NY1	3871	3867	0.10	-2.52	-9.91
Old Mutual Limited	OMU	1215	1260	-3.57	14.30	-6.97
OUTsurance Group Ltd	OUT	4477	4595	-2.57	11.79	6.09
Pick n Pay Stores Ltd	PIK	2527	2599	-2.77	1.73	8.59
Pepkor Holdings Ltd	PPH	1908	1956	-2.45	12.37	-2.80
Quilter Plc	QLT	2655	2746	-3.31	-4.70	9.35
Redefine Properties Ltd	RDF	414	424	-2.36	15.32	7.53
Remgro Ltd	REM	13781	14082	-2.14	14.18	-15.18
Resilient REIT Limited	RES	4833	4831	0.04	13.32	9.12
Reinet Investments S.C.A	RNI	45840	45530	0.68	-3.17	-1.68
Sappi Ltd	SAP	5000	5136	-2.65	-6.61	13.12
Santam Limited	SNT	32559	33698	-3.38	9.01	13.62
The Spar Group Ltd	SPP	11770	12200	-3.52	13.19	-0.17
Sirius Real Estate Ltd	SRE	2200	2164	1.66	-4.80	-0.68
Tiger Brands Ltd	TBS	20604	21181	-2.72	5.66	2.36
Transaction Capital Ltd	TCP	294	298	-1.34	18.55	-63.16
The Foschini Group Limited	TFG	12580	12878	-2.31	32.42	13.37
Thungela Resources Ltd	TGA	11357	11376	-0.17	-15.56	-26.16
Telkom SA SOC Ltd	TKG	2275	2401	-5.25	-4.17	-23.50
Truworths Int Ltd	TRU	9407	9679	-2.81	23.32	26.52
Woolworths Holdings Ltd	WHL	6141	6359	-3.43	12.78	-14.94
Zeda Limited	ZZD	1285	1293	-0.62	8.90	0.78

LOCAL EQUITIES | JSE SMALL CAP COMPANIES (Cents Per Share)

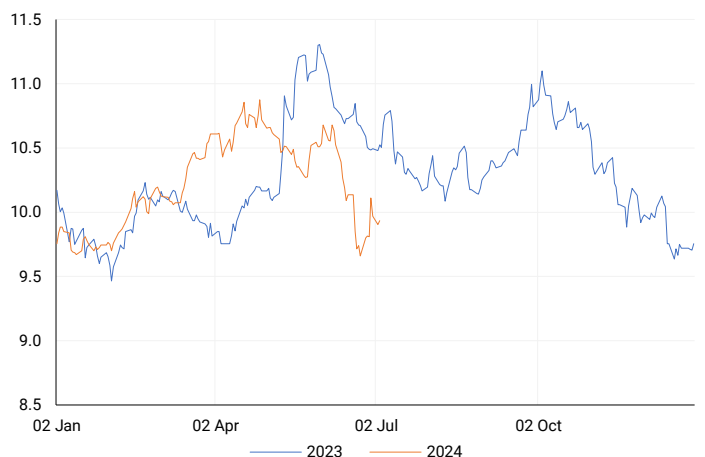
COMPANY	CODE	CLOSE	PREVIOUS	1D%	1M%	YTD%
ArcelorMittal SA Limited	ACL	118	124	-4.84	9.26	-28.05
ADVTECH Ltd	ADH	2875	2950	-2.54	10.58	17.16
Altron Limited A	AEL	1410	1408	0.14	9.73	37.56
AECI Limited	AFE	10800	10899	-0.91	12.84	-1.54
Alexander Forbes Grp Hldgs	AFH	717	720	-0.42	12.03	8.64
Afrimat Limited	AFT	7184	7348	-2.23	1.96	14.03
African Rainbow Cap Inv	AIL	641	651	-1.54	14.46	31.08
Adcock Ingram Hldgs Ltd	AIP	5905	6100	-3.20	4.00	-1.75
Astral Foods Ltd	ARL	16499	16699	-1.20	18.09	12.57
Attacq Limited	ATT	1089	1107	-1.63	9.12	18.11
Brait PLC	BAT	102	98	4.08	-11.30	-43.96
Blue Label Telecoms Ltd	BLU	396	405	-2.22	-7.91	2.06
Coronation Fund Mngrs Ld	CML	3617	3655	-1.04	4.03	16.08
Curro Holdings Limited	COH	1130	1173	-3.67	5.51	-3.00
Cashbuild Ltd	CSB	15500	15983	-3.02	7.64	-7.15
DRD Gold Ltd	DRD	1586	1583	0.19	0.19	0.57
Datatec Ltd	DTC	3623	3750	-3.39	-2.84	-10.54
Emira Property Fund Ltd	EMI	1055	1065	-0.94	11.05	23.39
Equites Prop Fund Ltd	EQU	1255	1267	-0.95	-3.24	-10.04
Famous Brands Ltd	FBR	5285	5393	-2.00	5.98	-8.77
Fairvest Limited B	FTB	386	395	-2.28	0.26	12.21
Grindrod Ltd	GND	1565	1575	-0.63	15.93	36.56
Hosken Cons Inv Ltd	HCI	17447	17800	-1.98	5.83	-13.88
Hudaco Industries Ltd	HDC	17600	17800	-1.12	6.65	9.57
Hyprop Inv Ltd	HYP	3231	3288	-1.73	18.09	3.86
Investec Property Fund Ltd	IPF	709	713	-0.56	-3.41	-11.38
JSE Ltd	JSE	10700	10780	-0.74	16.25	15.75
KAP Industrial Hldgs Ltd	KAP	305	316	-3.48	20.55	16.41
Karooooo Ltd	KRO	56995	53900	5.74	3.63	19.99
PSG Konsult Limited	KST	1750	1740	0.57	8.02	14.01
Libstar Holdings Ltd	LBR	389	360	8.06	6.58	11.14
Lighthouse Properties plc	LTE	799	800	-0.13	1.78	8.71
Industrials REIT Limited	MLI	0.4	0.4	0.00	-20.00	-42.86
MAS P.L.C	MSP	1675	1620	3.40	-2.45	-3.24
Metair Investments Ltd	MTA	1090	1098	-0.73	-0.82	-38.59
Motus Holdings Ltd	MTH	9961	9855	1.08	15.65	-1.86
Murray & Roberts Hldgs	MUR	224	217	3.23	15.46	50.34
Oceana Group Ltd	OCE	6875	7319	-6.07	-5.54	-2.72
Omnia Holdings Ltd	OMN	6711	6847	-1.99	19.58	2.66
Pan African Resource plc	PAN	635	614	3.42	5.66	55.26
PPC Limited	PPC	370	351	5.41	10.45	-7.27
Raubex Group Ltd	RBX	4280	4230	1.18	19.69	54.40
RFG Holdings Limited	RFG	1530	1590	-3.77	9.44	13.33
Reunert Ltd	RLO	7180	7296	-1.59	4.97	19.79
SA Corp Real Estate Ltd	SAC	261	264	-1.14	3.98	12.50
Super Group Ltd	SPG	2857	2929	-2.46	5.39	-3.97
Stor-Age Prop REIT Ltd	SSS	1379	1406	-1.92	2.68	5.59
Southern Sun LTD	SSU	551	550	0.18	4.55	4.95
Sun International Ltd	SUI	3690	3805	-3.02	-0.08	-10.00
Tharisa plc	THA	1974	1950	1.23	9.97	30.64
Tsogo Sun Gaming Ltd	TSG	1137	1138	-0.09	7.67	-7.18
Vukile Property Fund Ltd	VKE	1567	1578	-0.70	6.82	10.98
Wilson Bayly Hlm-Ovc Ltd	WBO	16535	16528	0.04	9.72	27.13

10-YEAR BOND YIELD | SELECTED ITEMS (Basis Point Change)

REGION	YIELD	1D	1M	1Y
United States	4.43%	-3	-7	--
United Kingdom	4.25%	-3	-7	-14
Germany	2.60%	0	-6	21
Japan	1.07%	2	2	--
South African 10Y	10.18%	-1	-50	-25

SOUTH AFRICAN 10-YEAR

2023 vs 2024 to date

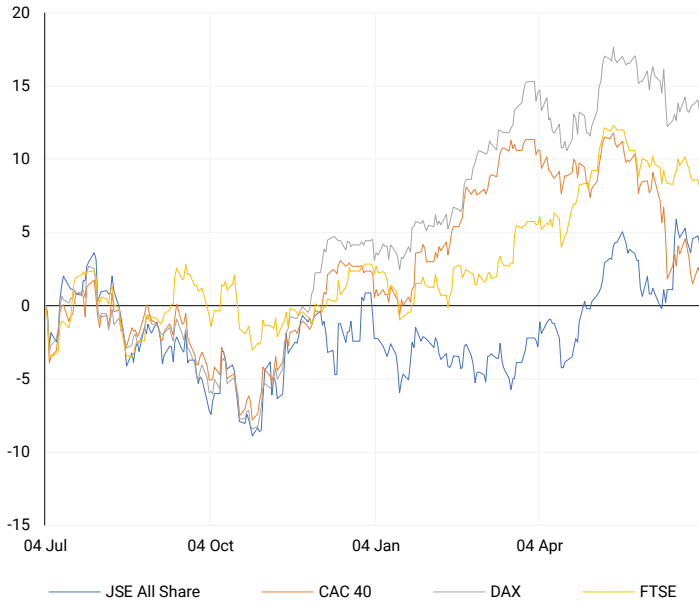


GLOBAL INTEREST RATES | SELECTED ITEMS

REGION	DATE CHANGED	CURRENT RATE
United States	Wed, 26 Jul '23	5.25%-5.50%
United Kingdom	Thu, 03 Aug '23	5.25%
European	Thu, 27 Jul '23	4.25%
SA Repo Rate	Thu, 25 May '23	8.25%
SA Prime Rate	Thu, 25 May '23	11.75%

EUROPEAN INDICES

Normalised percentage performances



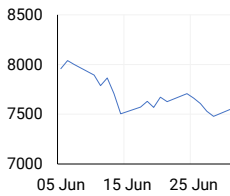
EUROPEAN MARKET SUMMARY

SELECTED ITEMS

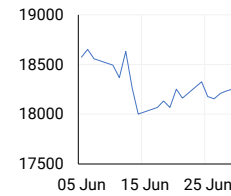
European stocks fell to two-week lows on Tuesday as the initial boost in French shares after the first round of parliamentary elections faded and data showed high inflation in euro zone services. The pan-European STOXX 600 index ended 0.4% lower, recovering slightly from nearly two-month lows earlier in the session. France's CAC 40 index dropped 0.3% as investors stayed cautious ahead of the second-round vote on July 7. Although overall euro zone inflation eased last month, high services inflation could worry some European Central Bank policymakers about ongoing price pressures.

EUROPEAN INDICES	CLOSE	PREVIOUS	1D%	5D%	1M%	YTD%
CAC 40	7538.29	7561.13	-0.30	-1.62	-5.69	-0.06
DAX 30	18164.06	18290.66	-0.69	-0.07	-1.80	8.43
Eurostoxx 50	4907.10	4940.10	-0.67	-0.57	-1.45	8.52
FTSE	8121.20	8166.76	-0.56	-1.53	-1.86	5.02

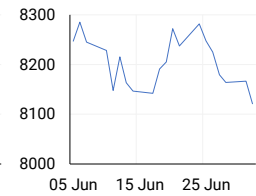
CAC 40



DAX

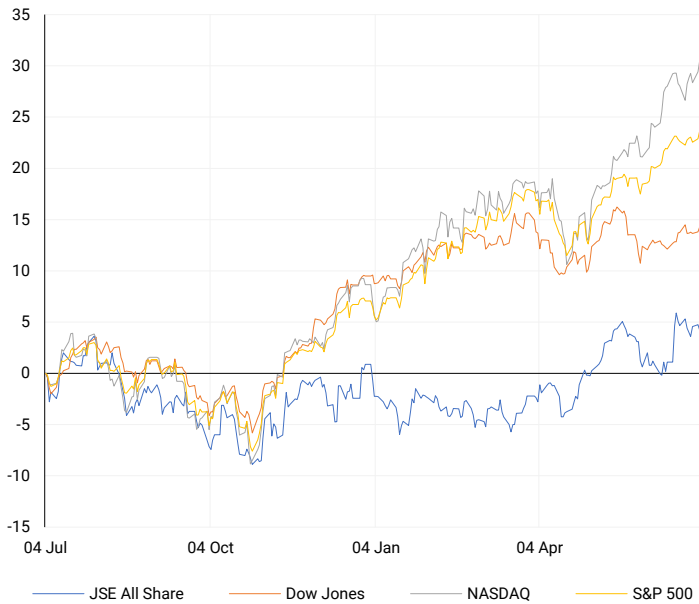


FTSE



AMERICAN INDICES

Normalised percentage performances



AMERICAN MARKET SUMMARY

SELECTED ITEMS

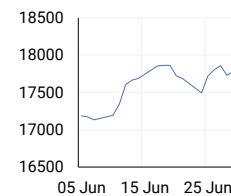
Wall Street's main stock indexes closed higher on Tuesday, driven by gains in Tesla and other major growth stocks, though trading volumes were low ahead of the July Fourth holiday and Friday's release of June nonfarm payrolls. The JOLTS report showed an increase in job openings in May despite recent declines, but also noted a rise in layoffs due to slowing economic activity. This data kicks off a week of crucial U.S. job reports, with Friday's nonfarm payrolls being key to assessing the labour market's resilience amid high interest rates.

AMERICAN INDICES	CLOSE	PREVIOUS	1D%	5D%	1M%	YTD%
Dow Jones	39331.85	39169.52	0.41	0.56	1.67	4.36
Nasdaq	18028.76	17879.30	0.84	1.76	7.73	20.10
S&P 500	5509.01	5475.09	0.62	0.73	4.39	15.50
US VIX	12.03	12.22	-1.55	-6.31	-6.89	-3.37

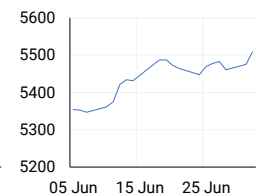
DOW JONES



NASDAQ

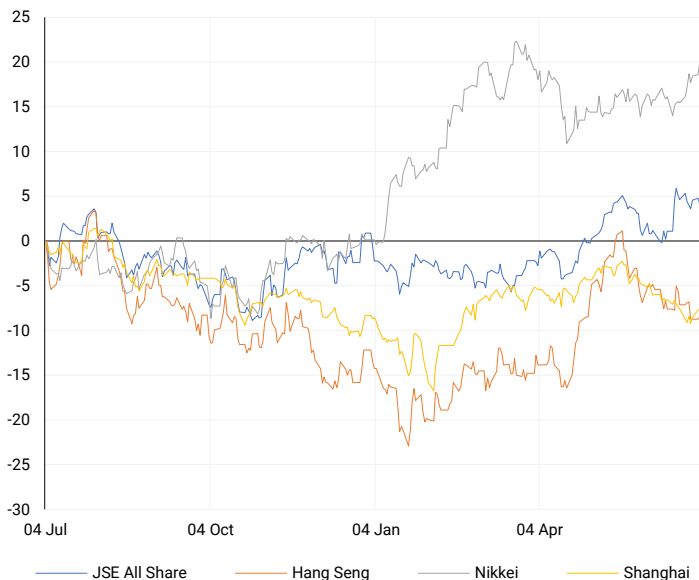


S&P 500



ASIAN INDICES

Normalised percentage performances



ASIAN MARKET SUMMARY

SELECTED ITEMS

Asia-Pacific markets mostly rose this morning as investors assessed regional data. Japan's composite PMI dropped to 49.7 in June from 52.6 in May, indicating the first decline in private sector activity in seven months, driven by a decrease in services despite a slight increase in manufacturing. Meanwhile, China's Caixin services PMI showed the sector expanded for the 18th consecutive month, though at its slowest pace since October 2023, falling to 51.2 from 54.0.

ASIAN INDICES	CLOSE	PREVIOUS	1D%	5D%	1M%	YTD%
Hang Seng	17769.14	17718.61	0.29	-1.68	-1.72	4.23
Nikkei 225	40074.69	39631.06	1.12	2.30	4.12	19.75
Shanghai	2997.01	2994.73	0.08	1.59	-2.91	0.74

HANG SENG



NIKKEI



SHANGHAI



COMMODITIES MARKET SUMMARY

SELECTED ITEMS

Gold prices remained steady this morning as investors awaited the minutes from the Federal Reserve's last policy meeting for insights on potential interest rate cuts. Meanwhile, oil prices inched higher in early Asian trade after industry data revealed a larger-than-expected drop in U.S. crude stockpiles, raising hopes for strong fuel demand during the summer driving season in the world's top oil-consuming country.

COMMODITY	LAST	CLOSE	% CHG	1D%	5D%	YTD%
Brent Crude	86.65	86.59	0.07	-0.05	1.99	12.34
Gold	2334.71	2329.52	0.22	-0.10	0.43	12.92
Palladium	1013.28	1012.76	0.05	3.00	6.52	-7.70
Platinum	996.45	999.21	-0.28	1.83	1.27	1.21
Silver	29.70	29.52	0.61	0.27	2.15	24.10

BRENT CRUDE

One-year



PLATINUM

One-year



GOLD

One-year



CURRENCY PAIR	LAST	CLOSE	% CHG	1D%	5D%	YTD%
USDZAR	18.60	18.60	0.04	1.25	1.94	1.48
GBPZAR	23.59	23.63	-0.15	1.79	2.10	1.42
EURZAR	19.97	19.99	-0.09	1.34	2.29	-0.98
AUDZAR	12.41	12.40	0.10	1.36	2.27	-0.45
EURUSD	1.07	1.07	-0.06	0.03	0.28	-2.66
USDJPY	161.92	161.44	0.29	-0.02	1.10	14.47
GBPUSD	1.27	1.27	-0.01	0.25	-0.04	-0.40
USDCHF	0.90	0.90	0.12	0.10	1.00	7.38

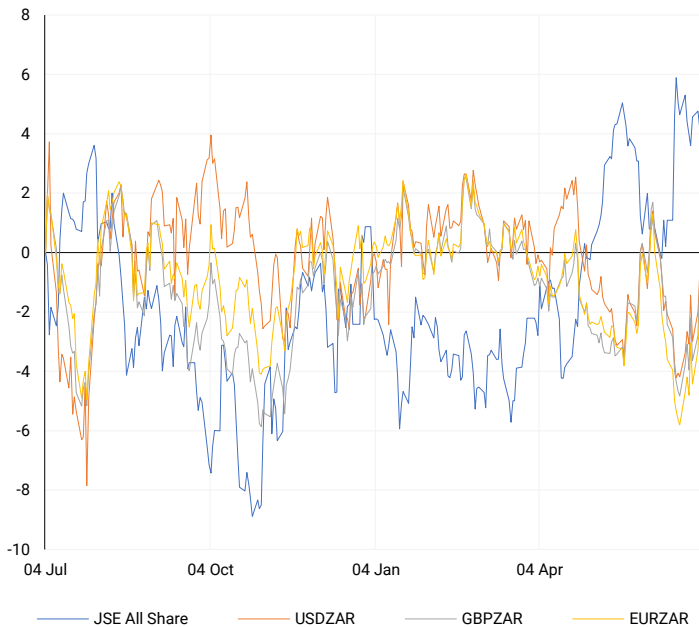
CURRENCY MARKET SUMMARY

SELECTED ITEMS

The South African rand continued to decline on Tuesday after a rocky start to the week, as markets awaited the new government of national unity's (GNU) approach to economic reform following the formation of the cabinet. The dollar weakened this morning following dovish comments from Federal Reserve Chair Jerome Powell, which pushed U.S. bond yields lower and overshadowed a strong domestic jobs report.

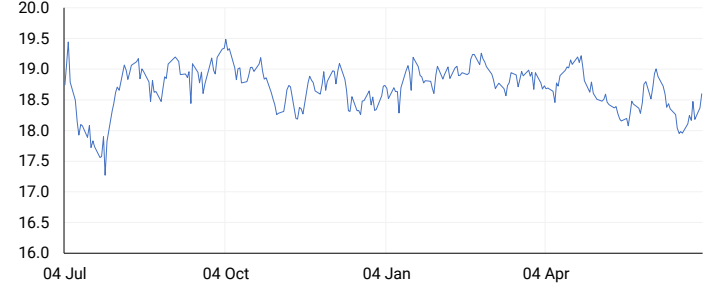
CURRENCY PAIRS vs JSE ALL SHARE

Normalised percentage performances



USDZAR

One-year



EURUSD

One-year



SOURCES | JSE, IRESS, MONEYWEB, CNBC, BBC, CNN

Disclaimer: This note is prepared for Sanlam Private Wealth (Pty) Ltd, by K2013143132 (Pty) Ltd trading as ThompsonGreen. ThompsonGreen is an independent company contracted to Sanlam Private Wealth (Pty) Ltd. The views expressed in this note are those of ThompsonGreen and/or its analysts and not necessarily the views of Sanlam Private Wealth (Pty) Ltd, Sanlam or any officer or agent thereof. K2013143132 (Pty) Ltd trading as ThompsonGreen is a research house and not a registered broker, financial adviser or financial service provider. Our editors and customer services teams also do not give personal investment advice. The information in this document is general advice only and may not be appropriate to your particular investment objectives, financial situation or particular needs. Before investing, or if you are in any doubt about your personal situation, you should seek professional advice from a stockbroker or independent financial adviser authorised by the Financial Sector Conduct Authority.