

GLOBAL OVERVIEW | SELECTED INDICES

SOUTH AFRICAN INDICES						
	CLOSE	PREVIOUS	1D%	5D%	1M%	YTD%
All Share	80797.38	81155.28	-0.44	1.37	5.17	5.08
Top 40	73729.27	73991.94	-0.36	1.03	4.46	4.59
Financial 15	18947.07	19109.46	-0.85	0.41	14.62	6.01
Industrial 25	107957.88	108702.90	-0.69	-0.25	-0.62	4.09
Resource 10	61946.91	61453.99	0.80	4.89	3.78	7.67
Mid Cap	84902.07	85226.51	-0.38	1.76	9.30	5.58
Small Cap	80606.55	81066.20	-0.57	4.18	9.41	11.19
Banks	11849.37	11943.83	-0.79	0.14	16.71	8.23
Retailers	6681.32	6712.49	-0.46	1.90	19.26	7.18
Property (J253) - TR	2089.23	2094.50	-0.25	2.32	5.48	12.10

AMERICAN INDICES						
	CLOSE	PREVIOUS	1D%	5D%	1M%	YTD%
Dow Jones	39375.87	39308.00	0.17	0.66	1.47	4.47
Nasdaq	18352.76	18188.30	0.90	3.50	6.78	22.26
S&P 500	5567.19	5537.02	0.54	1.95	3.98	16.72
US VIX	12.48	12.26	1.79	0.32	-1.19	0.24

EUROPEAN INDICES						
	CLOSE	PREVIOUS	1D%	5D%	1M%	YTD%
CAC 40	7675.62	7695.78	-0.26	2.62	-3.55	1.76
DAX 30	18475.45	18450.48	0.14	1.32	-0.54	10.29
Eurostoxx 50	4978.25	4991.00	-0.26	1.75	-1.12	10.10
FTSE	8203.93	8241.26	-0.45	0.49	-0.52	6.09

ASIAN INDICES						
	CLOSE	PREVIOUS	1D%	5D%	1M%	YTD%
Hang Seng	17799.61	18028.28	-1.27	0.46	-3.39	4.41
Nikkei 225	40912.37	40913.65	0.00	3.36	6.29	22.26
Shanghai	2949.93	2957.57	-0.26	-0.59	-3.77	-0.84

EARLY MORNING MARKETS						
	LAST	CLOSE	% CHG	1D%	5D%	YTD%
TENCENT	379.20	382.40	-0.84	0.79	2.69	31.77
BHP AUS	4353.00	4439.00	-1.94	-0.85	4.01	-11.94

NOTE : 5D% and 1M% are rolling percentage moves

INTERNATIONAL ECONOMIC CALENDAR | SELECTED EVENTS

TIME	AREA	TODAY'S EVENTS & RELEASES	PERIOD	EXP.	PREV.
8:00	DE	Balance of Trade	May	€22.5B	€22.1B
---	---	---	---	---	---
---	---	---	---	---	---
---	---	---	---	---	---
---	---	---	---	---	---

TIME	AREA	PREVIOUS SESSION'S RELEASES	PERIOD	EXP.	ACT.
8:00	ZA	Foreign Exchange Reserves	Jun	\$62.0B	\$62.10B
10:30	ZA	Inflation Expectations	Q2	5.5%	5.0%
14:30	US	Non Farm Payrolls	Jun	160.0K	206.0K
14:30	US	Unemployment Rate	Jun	4.0%	4.1%
---	---	---	---	---	---

JSE ALL SHARE | BEST AND WORST ONE-DAY PERFORMERS

BEST ONE-DAY % PERFORMERS						
	CODE	CLOSE	1D%	5D%	YTD%	
RCL Foods Limited	RCL	1095	6.83	8.96	28.67	
SA Corp Real Estate Ltd	SAC	269	4.26	3.86	15.95	
Raubex Group Ltd	RBX	4720	4.19	18.00	70.27	
Anglo American Plat Ltd	AMS	65488	2.81	8.83	-32.07	
Impala Platinum Hlgs Ltd	IMP	9854	2.57	8.56	7.97	
Cashbuild Ltd	CSB	16400	2.48	6.63	-1.76	

WORST ONE-DAY % PERFORMERS						
	CODE	CLOSE	1D%	5D%	YTD%	
Montauk Renewables Inc	MKR	9822	-4.64	-8.21	-42.90	
PPC Limited	PPC	369	-4.40	14.60	-7.52	
Kumba Iron Ore Ltd	KIO	46836	-4.10	6.54	-23.82	
PSG Fin Services Ltd	KST	1735	-3.66	0.06	13.03	
South32 Limited	S32	4679	-3.29	5.19	10.90	

DIVIDEND DATA

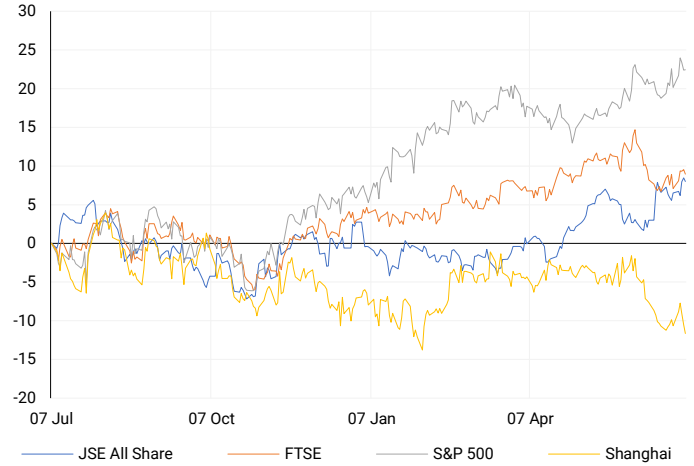
COMPANY	CODE	EXPECTED DIVIDEND	COMPANY	CODE	EXPECTED DIVIDEND
Vunani	VUN	9 ZARc	Safari Investments RSA	SAR	31 ZARc
PPC	PPC	13.7 ZARc	African Media Entertainment	AME	350 ZARc
Netcare	NTC	30 ZARc	Schroder European Real Estate Investment Trus	SCD	1.48 EURc
enX Group	ENX	500 ZARc	---	---	---
Zeda	ZZD	50 ZARc	---	---	---

SOURCES | JSE, IRESS, MONEYWEB, CNBC, BBC, CNN

PLEASE SEE THE BOTTOM OF THE LAST PAGE FOR THE FULL DISCLAIMER

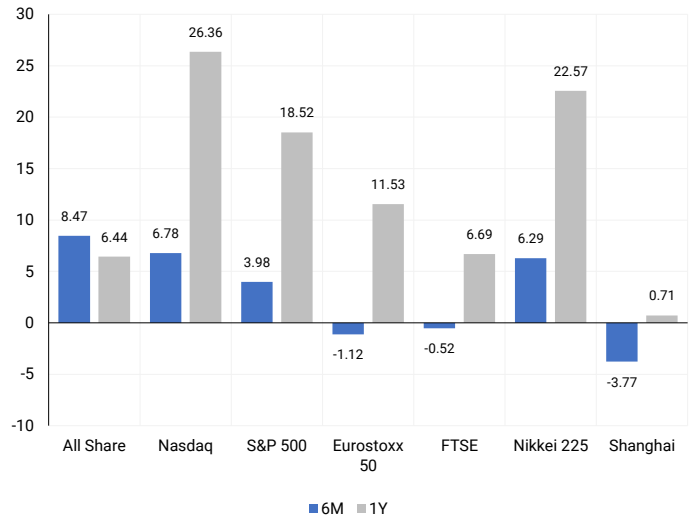
INTERNATIONAL INDICES

Normalised percentage performances - In rand terms



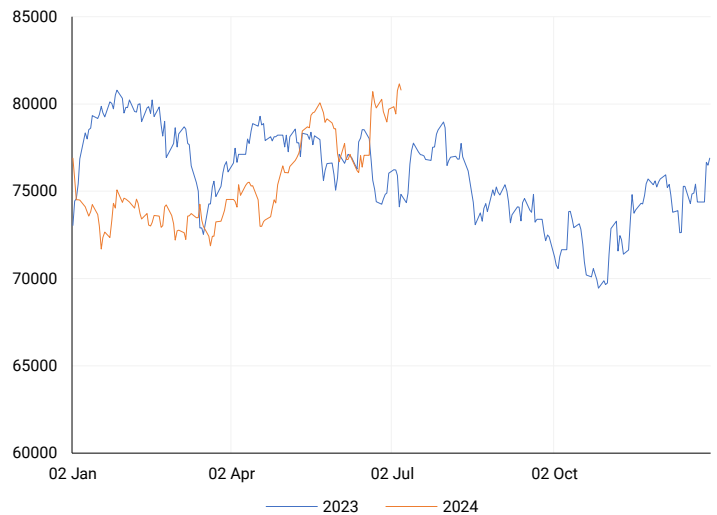
INTERNATIONAL INDICES

6-month & 1-year percentage performances



JSE ALL SHARE INDEX

2023 v 2024 to date



Last date to trade Tue, 09 July

LOCAL EQUITIES | JSE LARGE CAP COMPANIES (Cents Per Share)

COMPANY	CLOSE	PREVIOUS	1D%	5D%	1M%	YTD%
Absa Group Limited	15814	15911	-0.61	-0.20	5.31	-3.40
Anglo American plc	56618	56533	0.15	-1.79	-1.09	19.58
Anglo American Plat Ltd	65488	63697	2.81	8.83	8.65	-32.07
Anglogold Ashanti Ltd	50500	49427	2.17	9.84	14.05	42.89
Anheuser-Busch InBev SA NV	108849	109800	-0.87	2.38	-7.60	-9.30
BHP Group Limited	53826	54600	-1.42	3.25	-2.64	-15.02
BID Corporation Ltd	42489	43179	-1.60	0.00	1.06	-0.41
British American Tob plc	57245	57600	-0.62	1.92	-2.55	5.71
Compagnie Fin Richemont	283500	283442	0.02	-0.52	-8.49	10.41
Capitec Bank Hldgs Ltd	263661	265500	-0.69	0.29	21.50	30.12
Discovery Ltd	13850	13952	-0.73	2.83	26.41	-3.61
Firststrand Ltd	7702	7720	-0.23	0.16	20.70	4.77
Gold Fields Ltd	28979	28568	1.44	5.99	-0.03	4.32
Glencore plc	11225	11167	0.52	7.58	-1.20	0.54
Impala Platinum Hlgs Ltd	9854	9607	2.57	8.56	10.77	7.97
Kumba Iron Ore Ltd	46836	48840	-4.10	6.54	-0.42	-23.82
Mondi plc	35599	35888	-0.81	1.13	-2.69	-1.93
MTN Group Ltd	8334	8360	-0.31	-1.88	1.67	-27.84
Naspers Ltd -N-	351000	353445	-0.69	-1.60	-9.06	12.21
Prosus N.V.	64550	65240	-1.06	-0.79	-7.66	15.19
South32 Limited	4679	4838	-3.29	5.19	-2.09	10.90
Standard Bank Group Ltd	21018	21275	-1.21	-0.30	16.63	1.00
Shoprite Holdings Ltd	28535	28846	-1.08	0.46	14.37	3.74
Sanlam Limited	8165	8337	-2.06	0.90	14.23	12.16
Sasol Limited	14500	14821	-2.17	5.00	22.62	-21.74
Sibanye Stillwater Ltd	2152	2128	1.13	9.13	-0.09	-13.57
Vodacom Group Ltd	10034	9870	1.66	2.90	7.13	-5.34

SOUTH AFRICAN MARKET SUMMARY

SELECTED ITEMS

On the stock market, both the Top-40 index and the broader all-share index fell by about 0.4% on Friday. South Africa's state power company Eskom is expected to report a 15 billion rand (\$823 million) annual loss, mainly because it spent 33 billion rand on diesel to power gas turbines. Eskom, which had a 23.2 billion rand loss in 2023, will release its financial results for the year ending in March later this year, according to the Financial Times.

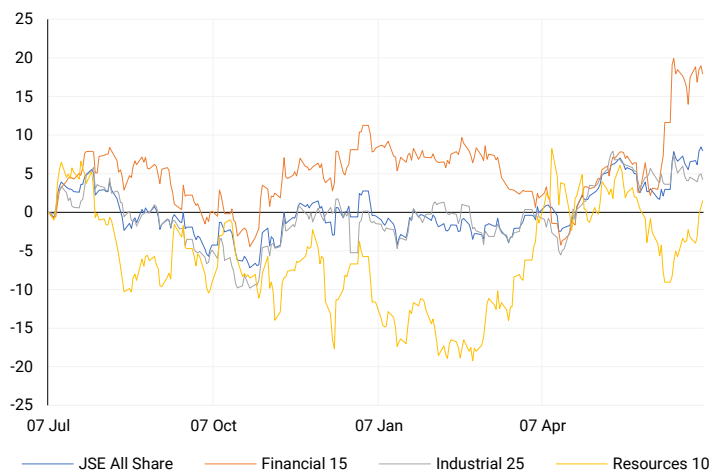
JSE ALL SHARE

One-year



LOCAL INDICES

Normalised percentage performances



LOCAL SENS ANNOUNCEMENTS

SELECTED RELEASE

CITY LODGE HOTELS LIMITED – Financial Assistance

Notice is hereby given that, following a special resolution passed at the Company's annual general meeting on 23 November 2023, the Board has approved providing financial assistance to current or future subsidiaries and related entities. This assistance, which may include guarantees, loans, or other support, exceeds one-tenth of 1% of the Company's net worth. The Board has confirmed that after considering the Company's financial situation, the Company remains solvent and liquid, the assistance complies with the Company's rules, and the terms are fair and reasonable.

CLH | -2.39% OPEN | 440c HIGH | 460c LOW | 440c CLOSE | 449c TIME | 17:40

TREMATON CAPITAL INVESTMENTS LIMITED – Cautionary announcement

Shareholders should be aware that the Company is in talks about a potential sale that could significantly impact the stock price. Until there is a further update or the cautionary notice is lifted, shareholders are advised to be cautious when trading the Company's securities.

TMT | 0.00% OPEN | 209c HIGH | 210c LOW | 209c CLOSE | 210c TIME | 13:30

TELEMASTERS HOLDINGS LIMITED – Cautionary Announcement

TeleMasters' two largest shareholders are in talks with a BEE company interested in buying their shares, but the deal depends on meeting certain conditions and regulatory approvals. If an offer is made and accepted, it will change TeleMasters' control and trigger a mandatory offer to all remaining shareholders. Additionally, TeleMasters is exploring a significant acquisition that would need shareholder and regulatory approvals.

TLM | 0.00% OPEN | 110c HIGH | 110c LOW | 110c CLOSE | 110c TIME | 08:20

EXPECTED COMPANY REPORTING SCHEDULE

COMPANY	CODE	RELEASE	DATE
Seбата	SEB	Final	15 Jul '24
Anglo American Platinum	AMS	Interim	24 Jul '24
Kumba Iron Ore	KIO	Interim	25 Jul '24
British American Tobacco	BTI	Interim	25 Jul '24
Kumba Iron Ore	KIO	Interim	25 Jul '24

BANK AND OTHER SELECTE PREFERENCE SHARES

COMPANY	CODE	CLOSE	CLEAN YIELD	NEXT LDT (Est.)
Investec Limited	INPR	8502	11.24	Thu, 06 Jun '24
Standard Bank	SBPP	8650	11.15	Thu, 05 Sep '24
Absa	ABSP	75545	11.48	Thu, 12 Sep '24
Capitec	CPIP	10000	9.69	Thu, 19 Sep '24
Steinhoff	SHFF	9734	10.47	Thu, 17 Oct '24
Grindrod	GNDP	9011	12.22	Thu, 19 Sep '24
Netcare	NTCP	7717	11.82	Thu, 31 Oct '24
Discovery	DSBP	9500	11.91	Thu, 19 Sep '24
Invicta	IVTP	11040	13.41	Thu, 27 Jun '24

LOCAL EQUITIES | JSE MID CAP COMPANIES (Cents Per Share)

COMPANY	CODE	CLOSE	PREVIOUS	1D%	1M%	YTD%
Aspen Pharmacare Hldgs Ltd	APN	23103	23200	-0.42	-0.89	13.53
African Rainbow Min Ltd	ARI	23940	24000	-0.25	9.01	19.70
AVI Ltd	AVI	9671	9801	-1.33	11.49	17.84
Barloworld Ltd	BAW	9051	9210	-1.73	-1.31	14.57
Bidvest Ltd	BVT	28405	28300	0.37	16.32	12.59
Bytes Technology Grp PLC	BYI	12955	13098	-1.09	-4.48	-9.54
Capital&Counties Prop plc	CCO	3420	3387	0.97	-3.44	5.23
Clicks Group Ltd	CLS	33080	33750	-1.99	10.82	1.56
Dis-Chem Pharmacies Ltd	DCP	3400	3452	-1.51	6.25	10.79
Distell Group Hldgs Ltd	DGH	95	95	0.00	7.95	10.47
Exxaro Resources Ltd	EXX	19090	18887	1.07	9.01	-6.64
Fortress Real Est INV B	FFB	1649	1652	-0.18	5.91	14.83
Growthpoint Prop Ltd	GRT	1231	1235	-0.32	10.50	5.39
Harmony GM Co Ltd	HAR	17630	17275	2.05	4.29	47.42
Hammerson plc	HMN	680	686	-0.87	0.29	0.00
Investec Ltd	INL	13500	13523	-0.17	10.00	7.49
Investec plc	INP	13604	13579	0.18	10.63	8.01
Italtile Ltd	ITE	1200	1215	-1.23	23.71	7.14
Life Healthc Grp Hldgs Ltd	LHC	1268	1292	-1.86	10.84	-30.97
MultiChoice Group Ltd	MCG	10373	10570	-1.86	-6.97	28.03
Montauk Renewables Inc	MKR	9822	10300	-4.64	-4.08	-42.90
Mr Price Group Ltd	MRP	20037	20255	-1.08	13.40	27.78
Momentum Met Hldgs Ltd	MTM	2325	2345	-0.85	11.14	6.21
Ninety One Plc	N91	4041	4018	0.57	3.83	-6.28
Nedbank Group Ltd	NED	25513	26200	-2.62	14.51	17.99
Northam Platinum Hldgs Ltd	NPH	12949	12697	1.98	12.25	-7.79
NEPI Rockcastle N.V.	NRP	13096	13195	-0.75	-1.30	3.62
Netcare Limited	NTC	1245	1268	-1.81	10.47	-12.57
Ninety One Limited	NY1	3984	3969	0.38	4.40	-7.28
Old Mutual Limited	OMU	1241	1252	-0.88	17.41	-4.98
OUTsurance Group Ltd	OUT	4683	4709	-0.55	13.78	10.97
Pick n Pay Stores Ltd	PIK	2686	2700	-0.52	8.05	15.43
Pepkor Holdings Ltd	PPH	1967	1954	0.67	15.16	0.20
Quilter Plc	QLT	2700	2735	-1.28	-5.30	11.20
Redefine Properties Ltd	RDF	420	422	-0.47	10.53	9.09
Remgro Ltd	REM	13823	13900	-0.55	12.59	-14.92
Resilient REIT Limited	RES	5023	5000	0.46	15.10	13.41
Reinet Investments S.C.A	RNI	45552	45772	-0.48	-6.27	-2.29
Sappi Ltd	SAP	5188	5295	-2.02	2.01	17.38
Santam Limited	SNT	32583	33500	-2.74	9.43	13.70
The Spar Group Ltd	SPP	12005	12197	-1.57	22.00	1.82
Sirius Real Estate Ltd	SRE	2248	2257	-0.40	-6.18	1.49
Tiger Brands Ltd	TBS	21200	21250	-0.24	7.19	5.32
Transaction Capital Ltd	TCP	295	296	-0.34	13.03	-63.03
The Foschini Group Limited	TFG	12864	12950	-0.66	37.77	15.93
Thungela Resources Ltd	TGA	11650	11869	-1.85	-11.93	-24.25
Telkom SA SOC Ltd	TKG	2290	2307	-0.74	-0.39	-23.00
Truworths Int Ltd	TRU	9398	9475	-0.81	23.95	26.40
Woolworths Holdings Ltd	WHL	6318	6360	-0.66	14.48	-12.49
Zeda Limited	ZZD	1314	1308	0.46	12.98	3.06

LOCAL EQUITIES | JSE SMALL CAP COMPANIES (Cents Per Share)

COMPANY	CODE	CLOSE	PREVIOUS	1D%	1M%	YTD%
ArcelorMittal SA Limited	ACL	125	124	0.81	17.92	-23.78
ADVTECH Ltd	ADH	2976	3000	-0.80	12.86	21.27
Altron Limited A	AEL	1489	1468	1.43	22.05	45.27
AECI Limited	AFE	10747	11100	-3.18	13.13	-2.02
Alexander Forbes Grp Hldgs	AFH	750	750	0.00	10.29	13.64
Afrimat Limited	AFT	7362	7475	-1.51	7.76	16.86
African Rainbow Cap Inv	AIL	650	651	-0.15	16.07	32.92
Adcock Ingram Hldgs Ltd	AIP	6044	6029	0.25	9.77	0.57
Astral Foods Ltd	ARL	17008	16962	0.27	16.50	16.04
Attacq Limited	ATT	1097	1117	-1.79	7.23	18.98
Brait PLC	BAT	103	103	0.00	8.42	-43.41
Blue Label Telecoms Ltd	BLU	406	413	-1.69	-6.24	4.64
Burstone Group	BTN	712	709	0.42	-2.73	-11.00
Coronation Fund Mngrs Ld	CML	3699	3678	0.57	6.72	18.71
Curro Holdings Limited	COH	1242	1225	1.39	18.97	6.61
Cashbuild Ltd	CSB	16400	16003	2.48	12.33	-1.76
DRD Gold Ltd	DRD	1713	1722	-0.52	6.60	8.62
Datatec Ltd	DTC	3684	3799	-3.03	-2.54	-9.04
Emira Property Fund Ltd	EMI	1124	1122	0.18	11.84	31.46
Equites Prop Fund Ltd	EQU	1328	1300	2.15	4.73	-4.80
Famous Brands Ltd	FBR	5373	5480	-1.95	10.92	-7.25
Fairvest Limited B	FTB	395	405	-2.47	-1.00	14.83
Grindrod Ltd	GND	1570	1596	-1.63	14.77	37.00
Hosken Cons Inv Ltd	HCI	17958	18399	-2.40	10.18	-11.36
Hudaco Industries Ltd	HDC	17870	17803	0.38	6.69	11.25
Hyprop Inv Ltd	HYP	3300	3300	0.00	15.30	6.08
JSE Ltd	JSE	10354	10600	-2.32	12.47	12.01
KAP Industrial Hldgs Ltd	KAP	300	294	2.04	25.00	14.50
Karooooo Ltd	KRO	59400	59000	0.68	4.09	25.06
PSG Konsult Limited	KST	1735	1801	-3.66	8.17	13.03
Libstar Holdings Ltd	LBR	385	400	-3.75	10.00	10.00
Lighthouse Properties plc	LTE	815	810	0.62	2.64	10.88
Industrials REIT Limited	MLI	0.5	0.4	25.00	25.00	-28.57
MAS P.L.C	MSP	1762	1770	-0.45	0.92	1.79
Metair Investments Ltd	MTA	1153	1147	0.52	6.27	-35.04
Motus Holdings Ltd	MTH	10099	10148	-0.48	17.87	-0.50
Murray & Roberts Hldgs	MUR	220	220	0.00	11.11	47.65
Oceana Group Ltd	OCE	7100	7185	-1.18	-2.47	0.47
Omnia Holdings Ltd	OMN	6982	7126	-2.02	31.46	6.81
Pan African Resource plc	PAN	630	630	0.00	9.19	54.03
PPC Limited	PPC	369	386	-4.40	10.81	-7.52
Raubex Group Ltd	RBX	4720	4530	4.19	35.79	70.27
RFG Holdings Limited	RFG	1500	1586	-5.42	8.70	11.11
Reunert Ltd	RLO	7250	7353	-1.40	5.76	20.95
SA Corp Real Estate Ltd	SAC	269	258	4.26	5.91	15.95
Super Group Ltd	SPG	3022	3028	-0.20	12.64	1.58
Stor-Age Prop REIT Ltd	SSS	1345	1373	-2.04	0.75	2.99
Southern Sun LTD	SSU	578	572	1.05	8.04	10.10
Sun International Ltd	SUI	3800	3851	-1.32	2.18	-7.32
Tharisa plc	THA	2065	2030	1.72	10.43	36.66
Tsogo Sun Gaming Ltd	TSG	1133	1153	-1.73	5.89	-7.51
Vukile Property Fund Ltd	VKE	1623	1623	0.00	4.24	14.94
Wilson Bayly Hlm-Ovc Ltd	WBO	17087	16900	1.11	11.80	31.38

10-YEAR BOND YIELD | SELECTED ITEMS (Basis Point Change)

REGION	YIELD	1D	1M	1Y
United States	4.29%	-6	-14	--
United Kingdom	4.12%	-7	-14	-52
Germany	2.55%	-5	-6	-8
Japan	1.07%	0	11	--
South African 10Y	9.98%	-3	-93	-72

SOUTH AFRICAN 10-YEAR

2023 vs 2024 to date



GLOBAL INTEREST RATES | SELECTED ITEMS

REGION	DATE CHANGED	CURRENT RATE
United States	Wed, 26 Jul '23	5.25%-5.50%
United Kingdom	Thu, 03 Aug '23	5.25%
European	Thu, 27 Jul '23	4.25%
SA Repo Rate	Thu, 25 May '23	8.25%
SA Prime Rate	Thu, 25 May '23	11.75%

EUROPEAN INDICES

Normalised percentage performances



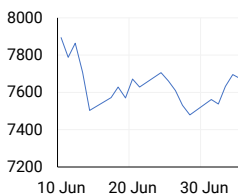
EUROPEAN MARKET SUMMARY

SELECTED ITEMS

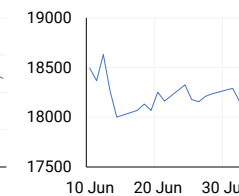
European shares fell on Friday due to losses in bank and energy stocks as investors grew cautious before the second round of the French parliamentary elections. The pan-European STOXX 600 index dropped 0.2% after hitting a one-week high earlier in the day, but still gained 1% for the week. French markets have been pressured since President Macron called for a snap election, with fears of a far-right win raising concerns about fiscal stability.

EUROPEAN INDICES	CLOSE	PREVIOUS	1D%	5D%	1M%	YTD%
CAC 40	7675.65	7695.78	-0.26	2.62	-3.55	1.76
DAX 30	18475.42	18450.48	0.14	1.32	-0.54	10.29
Eurostoxx 50	4978.25	4991.00	-0.26	1.75	-1.12	10.10
FTSE	8203.93	8241.26	-0.45	0.49	-0.52	6.09

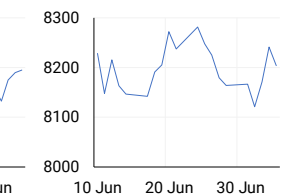
CAC 40



DAX



FTSE



AMERICAN INDICES

Normalised percentage performances



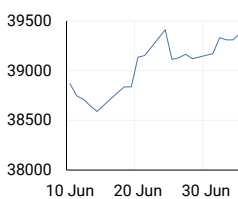
AMERICAN MARKET SUMMARY

SELECTED ITEMS

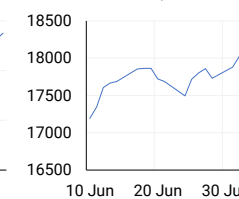
Wall Street stock indexes closed higher on Friday, with the tech-focused Nasdaq and the S&P 500 reaching record highs. This rally was driven by expectations of interest rate cuts as early as September, following new data showing a weakening U.S. labour market. Key stocks like Microsoft surged nearly 1.5%, closing at a record high. The Labor Department reported slower job growth in June, a rise in the unemployment rate to a 2.5-year high, and slowing wage gains.

AMERICAN INDICES	CLOSE	PREVIOUS	1D%	5D%	1M%	YTD%
Dow Jones	39375.87	39308.00	0.17	0.66	1.47	4.47
Nasdaq	18352.76	18188.30	0.90	3.50	6.78	22.26
S&P 500	5567.19	5537.02	0.54	1.95	3.98	16.72
US VIX	12.48	12.26	1.79	0.32	-1.19	0.24

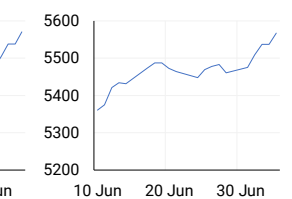
DOW JONES



NASDAQ

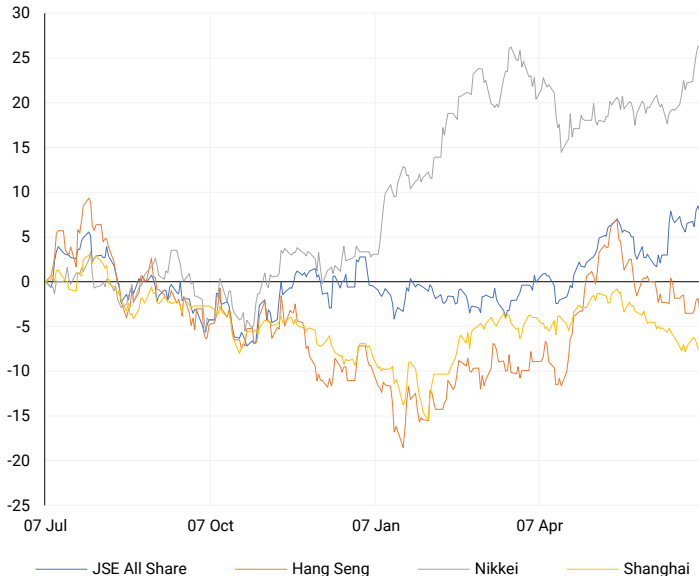


S&P 500



ASIAN INDICES

Normalised percentage performances



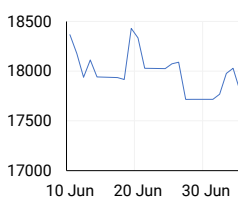
ASIAN MARKET SUMMARY

SELECTED ITEMS

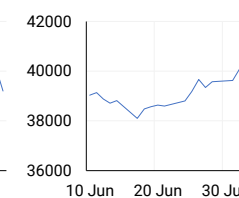
Asia-Pacific markets opened mixed this morning as investors awaited key economic data from China later this week. China's inflation figures on Wednesday will indicate the state of the country's economic recovery. Japan's Nikkei 225 fell slightly, and the Topix dropped 0.36% as real wages declined for the 26th consecutive month, despite a 1.9% rise in nominal wages in May. South Korea's Kospi hovered near the flatline, while the small-cap Kosdaq rose 0.86%, with Samsung Electronics shares up 0.46% despite an upcoming union strike.

ASIAN INDICES	CLOSE	PREVIOUS	1D%	5D%	1M%	YTD%
Hang Seng	17799.61	18028.28	-1.27	0.46	-3.39	4.41
Nikkei 225	40912.37	40913.65	0.00	3.36	6.29	22.26
Shanghai	2949.93	2957.57	-0.26	-0.59	-3.77	-0.84

HANG SENG



NIKKEI



SHANGHAI



COMMODITIES MARKET SUMMARY

SELECTED ITEMS

Gold prices eased this morning but remained close to a one-month high reached in the previous session, following weaker U.S. data that raised expectations of a Federal Reserve interest rate cut in September. Oil prices were largely unchanged as investors watched for energy supply disruptions, with Texas' largest ports closed ahead of Tropical Storm Beryl, which is expected to strengthen into a hurricane and make landfall today.

COMMODITY	LAST	CLOSE	% CHG	1D%	5D%	YTD%
Brent Crude	86.43	87.00	-0.66	-0.63	0.69	12.87
Gold	2385.48	2392.27	-0.28	1.48	2.82	15.96
Palladium	1008.13	1032.51	-2.36	2.08	5.84	-5.90
Platinum	1024.53	1030.80	-0.61	3.04	3.46	4.41
Silver	31.10	31.23	-0.42	2.73	7.21	31.28

BRENT CRUDE

One-year



PLATINUM

One-year



GOLD

One-year



CURRENCY PAIR	LAST	CLOSE	% CHG	1D%	5D%	YTD%
USDZAR	18.16	18.18	-0.10	-0.49	-0.04	-0.81
GBPZAR	23.27	23.29	-0.09	-0.09	1.23	-0.02
EURZAR	19.67	19.70	-0.17	-0.21	1.05	-2.42
AUDZAR	12.26	12.26	-0.04	-0.21	1.05	-1.55
EURUSD	1.08	1.08	-0.10	0.25	1.18	-1.80
USDJPY	160.56	160.74	-0.11	-0.32	-0.09	13.97
GBPUSD	1.28	1.28	-0.03	0.44	1.35	0.66
USDCHF	0.90	0.90	-0.08	-0.50	-0.34	6.43

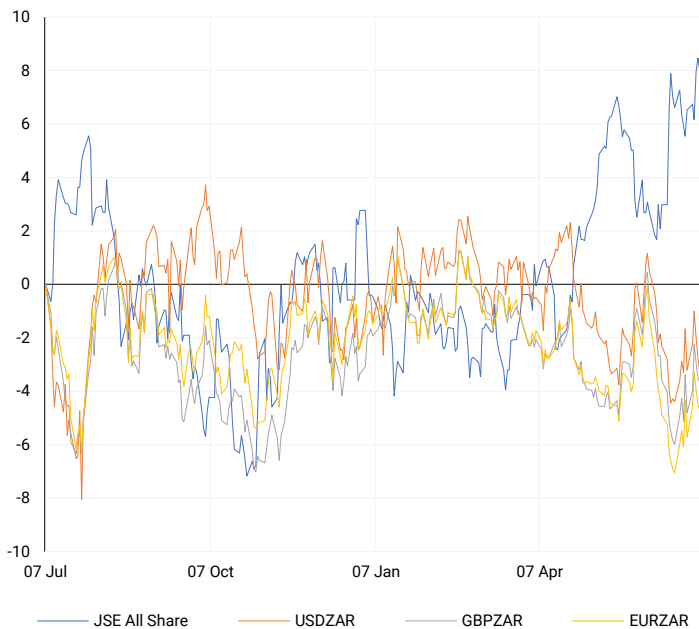
CURRENCY MARKET SUMMARY

SELECTED ITEMS

South Africa's rand gained strength against a weaker dollar on Friday due to expectations that the Federal Reserve will cut interest rates later this year. The U.S. dollar remained slightly lower after data showed slower job growth and a higher unemployment rate in June, supporting the idea that the Federal Reserve might start reducing interest rates in September.

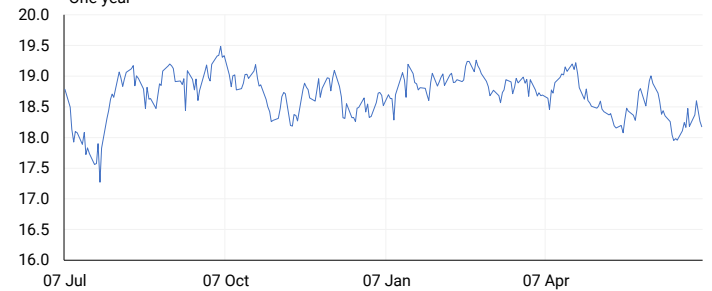
CURRENCY PAIRS vs JSE ALL SHARE

Normalised percentage performances



USDZAR

One-year



EURUSD

One-year



SOURCES | JSE, IRESS, MONEYWEB, CNBC, BBC, CNN

Disclaimer: This note is prepared for Sanlam Private Wealth (Pty) Ltd, by K2013143132 (Pty) Ltd trading as ThompsonGreen. ThompsonGreen is an independent company contracted to Sanlam Private Wealth (Pty) Ltd. The views expressed in this note are those of ThompsonGreen and/or its analysts and not necessarily the views of Sanlam Private Wealth (Pty) Ltd, Sanlam or any officer or agent thereof. K2013143132 (Pty) Ltd trading as ThompsonGreen is a research house and not a registered broker, financial adviser or financial service provider. Our editors and customer services teams also do not give personal investment advice. The information in this document is general advice only and may not be appropriate to your particular investment objectives, financial situation or particular needs. Before investing, or if you are in any doubt about your personal situation, you should seek professional advice from a stockbroker or independent financial adviser authorised by the Financial Sector Conduct Authority.