

GLOBAL OVERVIEW | SELECTED INDICES

SOUTH AFRICAN INDICES						
	CLOSE	PREVIOUS	1D%	5D%	1M%	YTD%
All Share	80678.20	80595.14	0.10	0.43	1.38	4.92
Top 40	73687.25	73596.11	0.12	0.46	1.08	4.53
Financial 15	19367.24	19079.94	1.51	2.75	2.97	8.36
Industrial 25	107995.52	107692.83	0.28	0.38	-0.39	4.13
Resource 10	59545.27	61076.32	-2.51	-3.53	1.50	3.50
Mid Cap	84514.88	84574.22	-0.07	0.11	1.51	5.10
Small Cap	80028.11	79829.08	0.25	0.57	3.70	10.39
Banks	12318.48	12076.98	2.00	3.87	4.41	12.52
Retailers	6598.35	6668.91	-1.06	0.29	1.92	5.85
Property (J253) - TR	2093.21	2081.73	0.55	0.89	3.37	12.31

AMERICAN INDICES						
	CLOSE	PREVIOUS	1D%	5D%	1M%	YTD%
Dow Jones	39935.07	39853.87	0.20	-1.80	2.10	5.96
Nasdaq	17181.72	17342.41	-0.93	-3.86	-3.02	14.46
S&P 500	5399.22	5427.13	-0.51	-2.62	-1.28	13.20
US VIX	18.46	18.04	2.33	15.88	43.77	48.27

EUROPEAN INDICES						
	CLOSE	PREVIOUS	1D%	5D%	1M%	YTD%
CAC 40	7341.25	7513.73	-2.30	-3.23	-4.19	-2.68
DAX 30	18298.72	18387.46	-0.48	-0.29	0.67	9.24
Eurostoxx 50	4815.80	4861.30	-0.94	-1.30	-2.42	6.51
FTSE	8186.35	8153.69	0.40	-0.23	-0.74	5.86

ASIAN INDICES						
	CLOSE	PREVIOUS	1D%	5D%	1M%	YTD%
Hang Seng	17004.97	17311.05	-1.77	-4.35	-5.91	-0.25
Nikkei 225	37869.51	39154.85	-3.28	-5.62	-3.33	13.16
Shanghai	2886.74	2901.95	-0.52	-3.04	-2.14	-2.96

EARLY MORNING MARKETS						
	LAST	CLOSE	% CHG	1D%	5D%	YTD%
TENCENT	354.80	351.20	1.03	-3.30	-4.88	21.02
BHP AUS	4211.00	4119.00	2.23	-0.89	-3.45	-18.29

NOTE : 5D% and 1M% are rolling percentage moves

INTERNATIONAL ECONOMIC CALENDAR | SELECTED EVENTS

TIME	AREA	TODAY'S EVENTS & RELEASES	PERIOD	EXP.	PREV.
14:30	US	Core PCE Price Index m/m	Jun	0.20%	0.10%
16:00	US	Michigan Consumer Sentiment Final	Jul	66.00	68.20
---	All	G20 Meetings	---	---	---
---	---	---	---	---	---
---	---	---	---	---	---

TIME	AREA	PREVIOUS SESSION'S RELEASES	PERIOD	EXP.	ACT.
11:30	ZA	PPI m/m	Jun	-0.20%	-0.30%
14:30	US	GDP Growth Rate q/q Adv	Q2	2.50%	2.80%
14:30	US	Unemployment Claims	Jul	247K	235K
14:30	US	Durable Goods Orders m/m	Jun	0.30%	-6.60%
17:00	EA	ECB President Lagarde Speech	---	---	---

JSE ALL SHARE | BEST AND WORST ONE-DAY PERFORMERS

BEST ONE-DAY % PERFORMERS						
	CODE	CLOSE	1D%	5D%	YTD%	
PPC Limited	PPC	388	5.72	10.54	-2.76	
British American Tob plc	BTI	64059	5.41	6.66	18.30	
Famous Brands Ltd	FBR	5367	4.72	1.84	-7.35	
Vodacom Group Ltd	VOD	9836	3.42	7.86	-7.21	
AECI Limited	AFE	9810	3.26	-6.85	-10.57	
Standard Bank Group Ltd	SBK	21836	2.96	5.30	4.93	

WORST ONE-DAY % PERFORMERS						
	CODE	CLOSE	1D%	5D%	YTD%	
Harmony GM Co Ltd	HAR	15827	-7.32	-16.27	32.34	
AngloGold Ashanti plc	ANG	49531	-4.92	-5.69	40.15	
Gold Fields Ltd	GFI	29612	-4.69	-3.20	6.60	
Karoo Ltd	KRO	56000	-4.31	-9.09	17.90	
Hammerson plc	HMN	675	-4.26	-1.03	-0.74	

DIVIDEND DATA

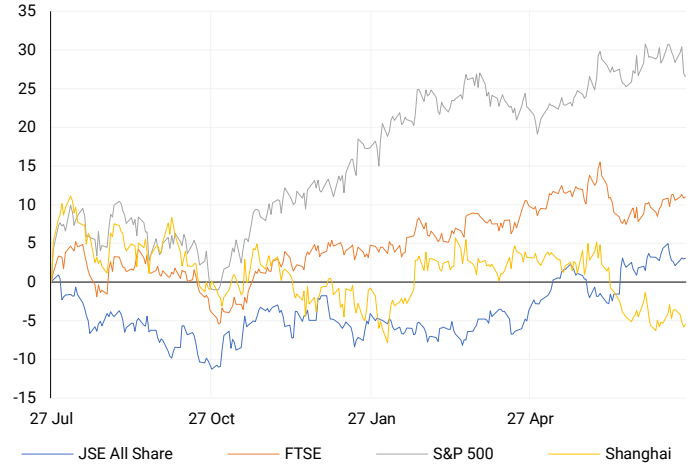
COMPANY	CODE	EXPECTED DIVIDEND	COMPANY	CODE	EXPECTED DIVIDEND
Invicta Holdings	IVT	105 ZARc	---	---	---
Premier Group	PMR	220 ZARc	---	---	---
Acsion	ACS	16 ZARc	---	---	---
---	---	---	---	---	---
---	---	---	---	---	---

SOURCES | JSE, IRESS, MONEYWEB, CNBC, BBC, CNN

PLEASE SEE THE BOTTOM OF THE LAST PAGE FOR THE FULL DISCLAIMER

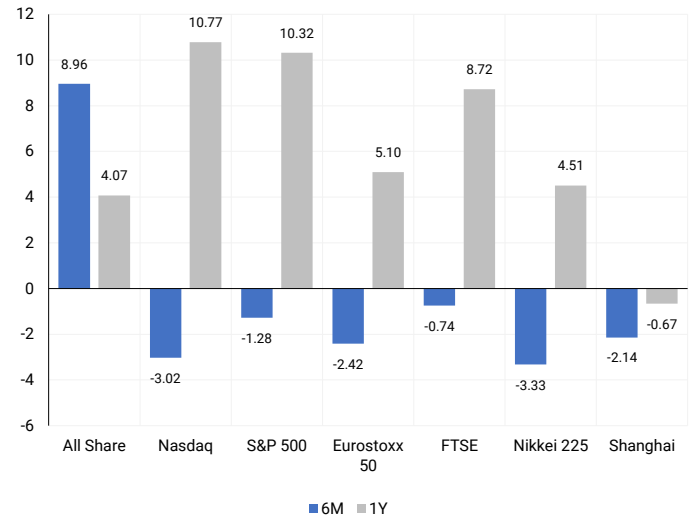
INTERNATIONAL INDICES

Normalised percentage performances - In rand terms



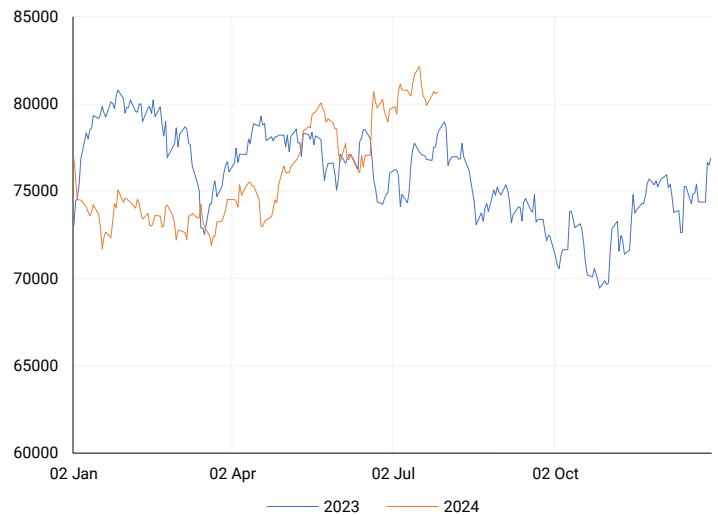
INTERNATIONAL INDICES

6-month & 1-year percentage performances



JSE ALL SHARE INDEX

2023 v 2024 to date



Last date to trade Tue, 30 July

## LOCAL EQUITIES | JSE LARGE CAP COMPANIES (Cents Per Share)

COMPANY	CLOSE	PREVIOUS	1D%	5D%	1M%	YTD%
Absa Group Limited	16329	16137	1.19	6.03	-5.09	-0.26
Anglo American plc	53082	52617	0.88	-1.54	-8.45	12.11
Anglo American Plat Ltd	69209	68097	1.63	13.60	11.11	-28.21
Anglogold Ashanti Ltd	49531	52093	-4.92	-5.69	11.59	40.15
Anheuser-Busch InBev SA NV	111547	111215	0.30	-0.45	2.49	-7.06
BHP Group Limited	50068	50055	0.03	-2.24	-3.04	-20.96
BID Corporation Ltd	44814	44233	1.31	2.43	4.71	5.04
British American Tob plc	64059	60772	5.41	6.66	10.25	18.30
Compagnie Fin Richemont	273024	275601	-0.94	-2.25	-6.40	6.33
Capitec Bank Hldgs Ltd	276824	274200	0.96	3.22	7.63	36.61
Discovery Ltd	13690	13660	0.22	0.20	0.88	-4.72
Firststrand Ltd	8008	7813	2.50	3.00	6.96	8.94
Gold Fields Ltd	29612	31070	-4.69	-3.20	9.48	6.60
Glencore plc	10177	10271	-0.92	-3.78	-2.84	-8.85
Impala Platinum Hlgs Ltd	9202	9211	-0.10	-0.82	1.08	0.82
Kumba Iron Ore Ltd	39633	40396	-1.89	-5.00	-11.01	-35.53
Mondi plc	36525	36930	-1.10	-1.81	6.49	0.62
MTN Group Ltd	7702	7675	0.35	4.12	-8.88	-33.32
Naspers Ltd -N-	345004	346870	-0.54	-1.83	-3.21	10.30
Prosus N.V.	63034	63856	-1.29	-3.45	-3.82	12.48
South32 Limited	3549	3610	-1.69	-16.14	-20.09	-15.88
Standard Bank Group Ltd	21836	21208	2.96	5.30	3.65	4.93
Shoprite Holdings Ltd	29306	29117	0.65	2.18	3.57	6.55
Sanlam Limited	7800	7881	-1.03	-1.73	-1.22	7.14
Sasol Limited	14320	14409	-0.62	5.82	5.25	-22.72
Sibanye Stillwater Ltd	1981	2068	-4.21	-5.40	-0.95	-20.44
Vodacom Group Ltd	9836	9511	3.42	7.86	2.89	-7.21

## SOUTH AFRICAN MARKET SUMMARY

### SELECTED ITEMS

The Top-40 index closed 0.12% higher on the stock market. South Africa's producer inflation remained steady at 4.6% year-on-year in June. Headline consumer inflation eased to 5.1% in June from 5.2% in May, raising hopes of an interest rate cut by the South African Reserve Bank. Anglo American posted underlying earnings of \$4.98 billion, a 3% drop from the previous year, and aims to complete a significant restructuring by the end of next year despite setbacks in its coal and diamond businesses.

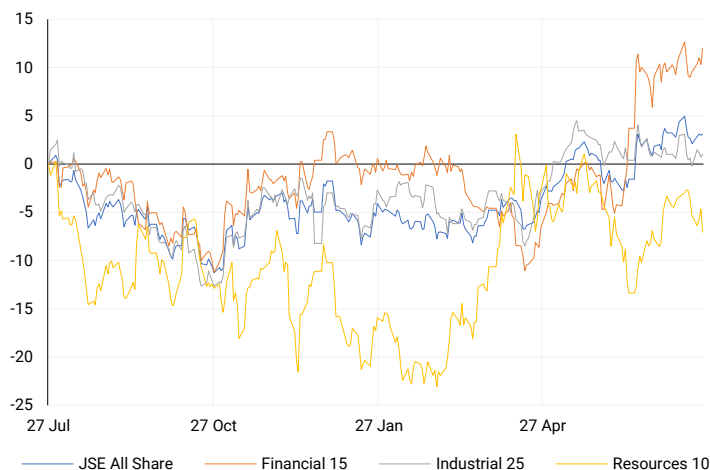
### JSE ALL SHARE

One-year



### LOCAL INDICES

Normalised percentage performances



### EXPECTED COMPANY REPORTING SCHEDULE

COMPANY	CODE	RELEASE	DATE
Anglo American	AGL	Interim	26 Jul '24
AECI	AFE	Interim	26 Jul '24
Ellies	---	Final	31 Jul '24
Shaftesbury Capital	SHC	Interim	31 Jul '24
---	---	---	---

### BANK AND OTHER SELECTE PREFERENCE SHARES

COMPANY	CODE	CLOSE	CLEAN YIELD	NEXT LDT (Est.)
Investec Limited	INPR	8699	11.24	Thu, 06 Jun '24
Standard Bank	SBPP	8780	11.15	Thu, 05 Sep '24
Absa	ABSP	77176	11.48	Thu, 12 Sep '24
Capitec	CPIP	10000	9.69	Thu, 19 Sep '24
Steinhoff	SHFF	9734	10.47	Thu, 17 Oct '24
Grindrod	GNDP	9250	12.22	Thu, 19 Sep '24
Netcare	NTCP	8201	11.82	Thu, 31 Oct '24
Discovery	DSBP	9800	11.91	Thu, 19 Sep '24
Invicta	IVTP	11040	13.41	Thu, 27 Jun '24

### LOCAL SENS ANNOUNCEMENTS

#### SELECTED RELEASE

##### BRITISH AMERICAN TOBACCO PLC – Half-Year Report

Revenue decreased by 8.2%, largely due to the sale of businesses in Russia and Belarus and unfavourable exchange rates. Organic revenue fell by 0.8% due to investments in U.S. commercial actions and negative effects of wholesaler inventory changes. New Categories revenue was down 0.4% but up 7.4% on an organic constant rate basis. The second half of the year is expected to improve with product innovations and better U.S. commercial performance. Revenue from smokeless products rose to 17.9% of the Group's total, with a £165 million increase in New Categories contributions. Despite strong pricing in Combustibles, overall profit from operations dropped by 28.3%, mainly due to higher amortization charges and previous comparisons including Russia and Belarus. Adjusted organic profit from operations fell by 0.9%, while reported diluted EPS rose by 13.8% due to one-off credits. Adjusted organic diluted EPS increased by 1.3%. The company announced a sustainable share buy-back program and an interim dividend of 235.52p per share for 2023, payable in four equal quarterly instalments in 2024 and 2025.

BTI | 5.41% OPEN | 60999c HIGH | 64369c LOW | 60800c CLOSE | 64059c TIME | 08:00

##### ANGLO AMERICAN PLC – Summarised Interim Financial Results

For the six months ended June 30, 2024, the company reported revenue of \$14,464 million, an 8% decline from \$15,674 million in the same period in 2023. Underlying EBITDA decreased by 3% to \$4,980 million, with the EBITDA margin improving to 33% from 31%. Attributable free cash flow rose to \$506 million from a negative \$466 million last year. The company posted a loss of \$672 million attributable to equity shareholders, compared to a profit of \$1,262 million in the previous year. Basic underlying earnings per share dropped 23% to \$1.06, while basic earnings per share swung to a loss of \$0.55 from a profit of \$1.04. The interim dividend per share decreased by 24% to \$0.42. Group attributable return on capital employed (ROCE) fell to 14% from 18%.

AGL | 0.88% OPEN | 52413c HIGH | 53566c LOW | 52089c CLOSE | 53082c TIME | 08:20

##### HAMMERSON PLC – Half Year Results

For the six months ended June 30, 2024, the company reported a gross rental income of £94.4 million, down from £106.3 million in 2023. Adjusted net rental income decreased to £72.7 million from £85.1 million, while adjusted earnings from Value Retail fell to £11.7 million from £13.4 million. Adjusted net finance costs improved to £(18.7) million from £(25.1) million, and adjusted earnings decreased to £49.5 million from £55.9 million. The company experienced revaluation losses of £(47.8) million, compared to £(43.8) million in 2023. The loss for the period was £(516.7) million, significantly higher than the £(1.2) million loss in the previous year. Adjusted earnings per share dropped to 1.0p from 1.1p, while the basic loss per share was (10.4)p, down from 0.0p. The interim dividend per share increased to 0.756p from 0.72p.

HMN | -4.26% OPEN | 717c HIGH | 717c LOW | 670c CLOSE | 675c TIME | 08:00

**LOCAL EQUITIES | JSE MID CAP COMPANIES** (Cents Per Share)

COMPANY	CODE	CLOSE	PREVIOUS	1D%	1M%	YTD%
Aspen Pharmacare Hldgs Ltd	APN	24278	23742	2.26	0.82	19.30
African Rainbow Min Ltd	ARI	21654	21770	-0.53	-3.52	8.27
AVI Ltd	AVI	9668	9655	0.13	2.08	17.80
Barloworld Ltd	BAW	9083	8872	2.38	2.67	14.97
Bidvest Ltd	BVT	27100	27018	0.30	-2.81	7.42
Bytes Technology Grp PLC	BYI	11410	11686	-2.36	-9.99	-20.33
Capital&Counties Prop plc	CCO	3482	3490	-0.23	8.24	7.14
Clicks Group Ltd	CLS	34019	33953	0.19	0.72	4.45
Dis-Chem Pharmacies Ltd	DCP	3571	3557	0.39	7.40	16.36
Exxaro Resources Ltd	EXX	19396	19357	0.20	12.06	-5.14
Fortress Real Est INV B	FFB	1685	1689	-0.24	4.40	17.34
Growthpoint Prop Ltd	GRT	1227	1213	1.15	1.15	5.05
Harmony GM Co Ltd	HAR	15827	17077	-7.32	-6.37	32.34
Hammerson plc	HMN	675	705	-4.26	6.13	-0.74
Investec Ltd	INL	13804	13732	0.52	4.60	9.91
Investec plc	INP	13950	13844	0.77	5.70	10.76
Italtile Ltd	ITE	1194	1183	0.93	6.99	6.61
Life Healthc Grp Hldgs Ltd	LHC	1290	1278	0.94	4.54	-29.78
MultiChoice Group Ltd	MCG	10940	10870	0.64	4.80	35.03
Montauk Renewables Inc	MKR	11000	10700	2.80	10.18	-36.05
Mr Price Group Ltd	MRP	21006	21121	-0.54	3.48	33.96
Momentum Met Hldgs Ltd	MTM	2412	2402	0.42	5.24	10.19
Ninety One Plc	N91	3950	3961	-0.28	2.04	-8.40
Nedbank Group Ltd	NED	26542	26016	2.02	2.94	22.75
Northam Platinum Hldgs Ltd	NPH	13579	13470	0.81	5.69	-3.30
NEPI Rockcastle N.V.	NRP	13355	13206	1.13	2.22	5.67
Netcare Limited	NTC	1218	1192	2.18	-4.09	-14.47
Ninety One Limited	NY1	3886	3878	0.21	1.70	-9.56
Old Mutual Limited	OMU	1199	1184	1.27	0.17	-8.19
OUTsurance Group Ltd	OUT	4689	4638	1.10	1.52	11.11
Pick n Pay Stores Ltd	PIK	2324	2325	0.39	10.19	0.30
Pepkor Holdings Ltd	PPH	1957	1966	-0.46	5.10	-0.31
Quilter Plc	QLT	2922	2940	-0.61	5.49	20.35
Redefine Properties Ltd	RDF	418	417	0.24	4.50	8.57
Remgro Ltd	REM	13344	13336	0.06	-4.69	-17.87
Resilient REIT Limited	RES	4950	4924	0.53	5.54	11.76
Reinet Investments S.C.A	RNI	46800	45938	1.88	-0.40	0.38
Sappi Ltd	SAP	5472	5417	1.02	14.36	23.80
Santam Limited	SNT	31851	32262	-1.27	1.62	11.15
The Spar Group Ltd	SPP	12294	12100	1.60	5.93	4.27
Sirius Real Estate Ltd	SRE	2217	2217	0.00	0.54	0.09
Tiger Brands Ltd	TBS	21902	21722	0.83	6.58	8.81
Transaction Capital Ltd	TCP	285	287	-0.70	-5.00	-64.29
The Foschini Group Limited	TFG	13246	13561	-2.32	5.08	19.38
Thungela Resources Ltd	TGA	11770	11850	-0.68	6.79	-23.47
Telkom SA SOC Ltd	TKG	2344	2323	0.90	-2.78	-21.18
Truworths Int Ltd	TRU	8847	9104	-2.82	-3.71	18.99
Woolworths Holdings Ltd	WHL	5780	5815	-0.60	-3.97	-19.94
Zeda Limited	ZZD	1220	1208	0.99	2.01	-4.31

**LOCAL EQUITIES | JSE SMALL CAP COMPANIES** (Cents Per Share)

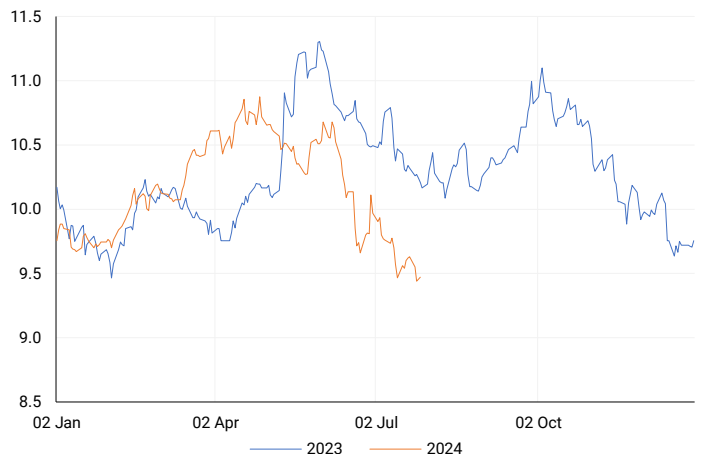
COMPANY	CODE	CLOSE	PREVIOUS	1D%	1M%	YTD%
ArcelorMittal SA Limited	ACL	131	135	-2.96	4.80	-20.12
ADVTECH Ltd	ADH	3000	2981	0.64	8.30	22.25
Altron Limited A	AEL	1617	1627	-0.61	22.22	57.76
AECI Limited	AFE	9810	9500	3.26	-7.79	-10.57
Alexander Forbes Grp Hldgs	AFH	652	658	-0.91	-11.89	-1.21
Afrimat Limited	AFT	6717	6788	-1.05	-4.29	6.62
African Rainbow Cap Inv	AIL	630	640	-1.56	-4.55	28.83
Adcock Ingram Hldgs Ltd	AIP	5906	5903	0.05	-0.27	-1.73
Astral Foods Ltd	ARL	16919	16900	0.11	4.89	15.43
Attacq Limited	ATT	1086	1080	0.56	3.04	17.79
Brait PLC	BAT	79	79	0.00	26.48	-56.59
Blue Label Telecoms Ltd	BLU	430	432	-0.46	9.97	10.82
Burststone Group	BTN	773	773	0.00	10.74	-3.38
Coronation Fund Mngrs Ld	CML	3738	3730	0.21	3.03	19.96
Curro Holdings Limited	COH	1209	1190	1.60	8.63	3.78
Cashbuild Ltd	CSB	16400	16500	-0.61	9.33	-1.76
DRD Gold Ltd	DRD	1787	1846	-3.20	10.99	13.32
Datatec Ltd	DTC	3551	3521	0.85	-5.33	-12.32
Emira Property Fund Ltd	EMI	1070	1075	-0.47	-4.12	25.15
Equites Prop Fund Ltd	EQU	1296	1308	-0.92	2.21	-7.10
Famous Brands Ltd	FBR	5367	5125	4.72	4.76	-7.35
Fairvest Limited B	FTB	389	390	-0.26	0.78	13.08
Grindrod Ltd	GND	1580	1559	1.35	9.27	37.87
Hosken Cons Inv Ltd	HCI	19200	19141	0.31	11.09	-5.23
Hudaco Industries Ltd	HDC	17755	17680	0.42	-0.20	10.53
Hyprop Inv Ltd	HYP	3143	3143	0.00	3.73	1.03
JSE Ltd	JSE	10278	10602	-3.06	-4.59	11.19
KAP Industrial Hldgs Ltd	KAP	298	300	-0.67	2.76	13.74
Karooooo Ltd	KRO	56000	58524	-4.31	-8.87	17.90
PSG Konsult Limited	KST	1674	1684	-0.59	-0.95	9.06
Libstar Holdings Ltd	LBR	390	390	0.00	1.30	11.43
Lighthouse Properties plc	LTE	806	798	1.00	-1.10	9.66
Industrials REIT Limited	MLI	1.3	1.4	-7.14	160.00	85.71
MAS P.L.C	MSP	1762	1762	0.00	9.03	1.79
Metair Investments Ltd	MTA	1365	1385	-1.44	20.58	-23.10
Motus Holdings Ltd	MTH	10395	10380	0.14	10.62	2.41
Murray & Roberts Hldgs	MUR	279	260	7.31	28.57	87.25
Oceana Group Ltd	OCE	6781	6750	0.46	-8.36	-4.05
Omnia Holdings Ltd	OMN	6590	6620	-0.45	7.56	0.81
Pan African Resource plc	PAN	659	667	-1.20	7.33	61.12
PPC Limited	PPC	388	367	5.72	5.15	-2.76
Raubex Group Ltd	RBX	4511	4439	1.62	13.43	62.73
RFG Holdings Limited	RFG	1536	1519	1.12	0.79	13.78
Reunert Ltd	RLO	7185	7153	0.45	3.31	19.87
SA Corp Real Estate Ltd	SAC	264	264	0.00	0.38	13.79
Super Group Ltd	SPG	2965	2963	0.07	4.99	-0.34
Stor-Age Prop REIT Ltd	SSS	1317	1325	-0.60	-6.53	0.84
Southern Sun LTD	SSU	593	592	0.17	11.89	12.95
Sun International Ltd	SUI	3648	3607	1.14	1.25	-11.02
Tharisa plc	THA	1950	1901	2.58	7.08	29.05
Tsogo Sun Gaming Ltd	TSG	1119	1110	0.81	-2.70	-8.65
Vukile Property Fund Ltd	VKE	1656	1643	0.79	6.91	17.28
Wilson Bayly Hlm-Ovc Ltd	WBO	17803	18050	-1.37	11.76	36.88

**10-YEAR BOND YIELD | SELECTED ITEMS** (Basis Point Change)

REGION	YIELD	1D	1M	1Y
United States	4.24%	-4	0	--
United Kingdom	4.13%	-3	5	-13
Germany	2.41%	-3	1	-1
Japan	1.05%	-1	6	--
South African 10Y	9.48%	-3	-57	-78

**SOUTH AFRICAN 10-YEAR**

2023 vs 2024 to date



**GLOBAL INTEREST RATES | SELECTED ITEMS**

REGION	DATE CHANGED	CURRENT RATE
United States	Wed, 26 Jul '23	5.25%-5.50%
United Kingdom	Thu, 03 Aug '23	5.25%
European	Thu, 27 Jul '23	4.25%
SA Repo Rate	Thu, 25 May '23	8.25%
SA Prime Rate	Thu, 25 May '23	11.75%

## EUROPEAN INDICES

Normalised percentage performances



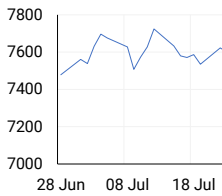
## EUROPEAN MARKET SUMMARY

### SELECTED ITEMS

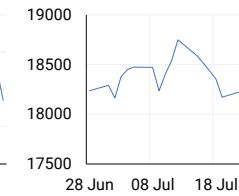
European shares closed lower on Thursday, pressured by disappointing earnings reports across tech and luxury sectors, while a global move towards safe haven assets intensified losses. Investors sought less risky assets like short-dated bonds, driving the yield on the German two-year bond to its lowest level since February. Additionally, a survey of around 9,000 managers revealed that German business morale unexpectedly dropped in July, reflecting growing pessimism about the performance of Europe's largest economy.

EUROPEAN INDICES	CLOSE	PREVIOUS	1D%	5D%	1M%	YTD%
CAC 40	7341.25	7513.73	-2.30	-3.23	-4.19	-2.68
DAX 30	18298.72	18387.46	-0.48	-0.29	0.67	9.24
Eurostoxx 50	4815.80	4861.30	-0.94	-1.30	-2.42	6.51
FTSE	8186.35	8153.69	0.40	-0.23	-0.74	5.86

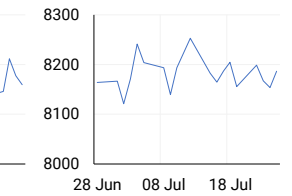
### CAC 40



### DAX

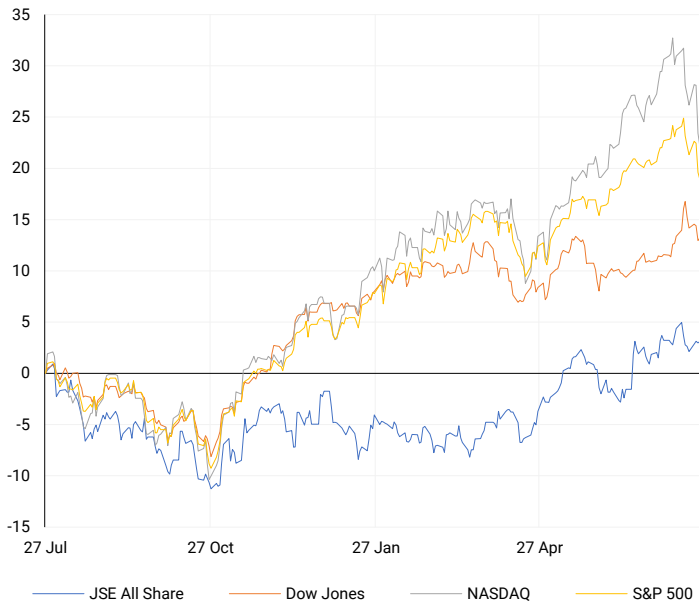


### FTSE



## AMERICAN INDICES

Normalised percentage performances



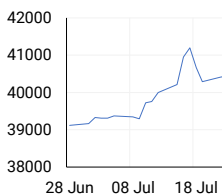
## AMERICAN MARKET SUMMARY

### SELECTED ITEMS

The S&P 500 and Nasdaq Composite closed lower on Thursday, unable to recover from the previous day's tech-driven sell-off, as investors remained uncertain about the future of megacap stocks. The Dow Jones Industrial Average, however, finished higher thanks to unexpectedly strong U.S. GDP data, which showed a 2.8% expansion in the second quarter, above the 2% estimate. Despite disappointing earnings and ongoing political and economic uncertainty, recent data indicates a resilient U.S. economy, with inflation subsiding and expectations for a Federal Reserve rate cut in September still in place.

AMERICAN INDICES	CLOSE	PREVIOUS	1D%	5D%	1M%	YTD%
Dow Jones	39935.07	39853.87	0.20	-1.80	2.10	5.96
Nasdaq	17181.72	17342.41	-0.93	-3.86	-3.02	14.46
S&P 500	5399.22	5427.13	-0.51	-2.62	-1.28	13.20
US VIX	18.46	18.04	2.33	15.88	43.77	48.27

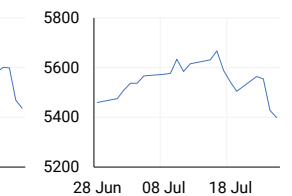
### DOW JONES



### NASDAQ

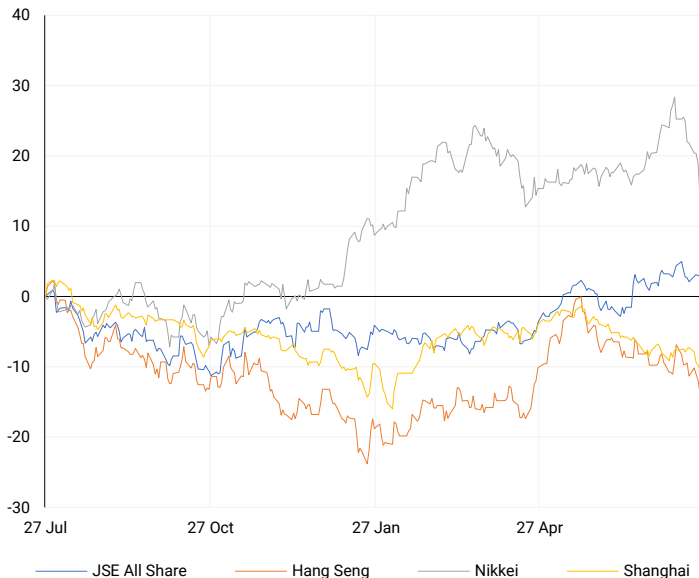


### S&P 500



## ASIAN INDICES

Normalised percentage performances



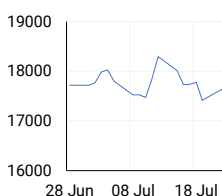
## ASIAN MARKET SUMMARY

### SELECTED ITEMS

Asia-Pacific markets mostly rebounded this morning following Thursday's sell-off, which saw some indexes in the region hit their lowest levels in months. Traders in Asia focused on July inflation data from Tokyo, viewed as an indicator of national trends. Japan's Nikkei 225 hovered near the flatline as Tokyo's headline inflation slightly decreased to 2.2% in July from 2.3% in May, with core inflation remaining steady at 2.2%, matching expectations. Taiwan's markets reopened after a two-day closure due to a typhoon. In Singapore, the monetary authority announced it will maintain its current monetary policy, keeping the exchange rate settings for the Singapore dollar unchanged.

ASIAN INDICES	CLOSE	PREVIOUS	1D%	5D%	1M%	YTD%
Hang Seng	17004.97	17311.05	-1.77	-4.35	-5.91	-0.25
Nikkei 225	37869.51	39154.85	-3.28	-5.62	-3.33	13.16
Shanghai	2886.74	2901.95	-0.52	-3.04	-2.14	-2.96

### HANG SENG



### NIKKEI



### SHANGHAI



## COMMODITIES MARKET SUMMARY

### SELECTED ITEMS

Gold was set for a weekly loss despite firming up this morning ahead of a crucial U.S. inflation report, which could provide insights on the timing of potential Federal Reserve interest rate cuts. Meanwhile, oil prices saw a slight increase this morning, driven by stronger-than-expected U.S. economic data, boosting investor expectations for higher crude oil demand from the world's largest energy consumer.

COMMODITY	LAST	CLOSE	% CHG	1D%	5D%	YTD%
Brent Crude	82.48	82.48	0.00	1.18	-2.70	7.01
Gold	2374.98	2364.46	0.44	-1.39	-3.30	14.61
Palladium	918.52	909.49	0.99	-2.70	-2.37	-17.11
Platinum	942.25	938.12	0.44	-1.49	-3.47	-4.98
Silver	27.87	27.85	0.07	-3.67	-6.61	17.08

## BRENT CRUDE

One-year



## PLATINUM

One-year



## GOLD

One-year



CURRENCY PAIR	LAST	CLOSE	% CHG	1D%	5D%	YTD%
USDZAR	18.31	18.37	-0.31	0.18	0.53	0.22
GBPZAR	23.55	23.62	-0.29	-0.26	-0.05	1.40
EURZAR	19.88	19.91	-0.16	0.10	0.08	-1.37
AUDZAR	12.00	12.00	0.00	-0.51	-2.01	-3.65
EURUSD	1.09	1.08	0.14	0.04	-0.48	-1.74
USDJPY	153.64	153.94	-0.19	0.03	-2.18	9.15
GBPUSD	1.29	1.29	0.10	-0.48	-0.80	0.93
USDCHF	0.88	0.88	-0.07	-0.39	-0.54	4.76

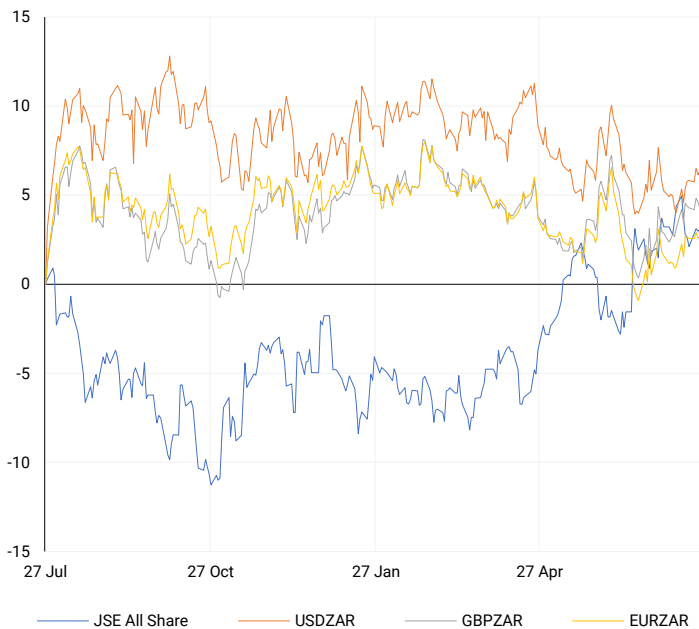
## CURRENCY MARKET SUMMARY

### SELECTED ITEMS

The South African rand strengthened against a weaker dollar on Thursday following U.S. economic data that supported expectations of a Federal Reserve interest rate cut in September. Despite an earlier rise in the dollar driven by a stronger-than-expected Q2 GDP report, it balanced out previous losses.

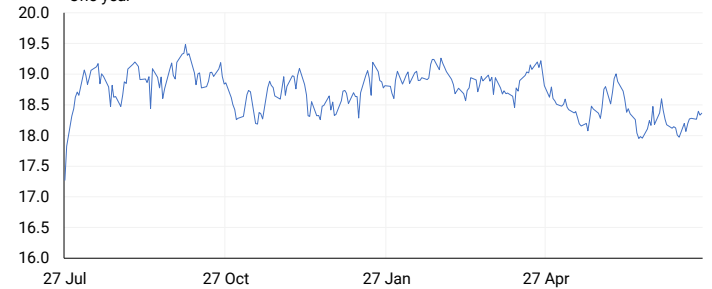
## CURRENCY PAIRS vs JSE ALL SHARE

Normalised percentage performances



## USDZAR

One-year



## EURUSD

One-year



SOURCES | JSE, IRESS, MONEYWEB, CNBC, BBC, CNN

**Disclaimer:** This note is prepared for Sanlam Private Wealth (Pty) Ltd, by K2013143132 (Pty) Ltd trading as ThompsonGreen. ThompsonGreen is an independent company contracted to Sanlam Private Wealth (Pty) Ltd. The views expressed in this note are those of ThompsonGreen and/or its analysts and not necessarily the views of Sanlam Private Wealth (Pty) Ltd, Sanlam or any officer or agent thereof. K2013143132 (Pty) Ltd trading as ThompsonGreen is a research house and not a registered broker, financial adviser or financial service provider. Our editors and customer services teams also do not give personal investment advice. The information in this document is general advice only and may not be appropriate to your particular investment objectives, financial situation or particular needs. Before investing, or if you are in any doubt about your personal situation, you should seek professional advice from a stockbroker or independent financial adviser authorised by the Financial Sector Conduct Authority.