

GLOBAL OVERVIEW | SELECTED INDICES

SOUTH AFRICAN INDICES	CLOSE	PREVIOUS	1D%	5D%	1M%	YTD%
All Share	81868.82	82765.12	-1.08	1.48	2.52	6.47
Top 40	74712.02	75661.56	-1.25	1.39	2.62	5.98
Financial 15	19722.39	19840.36	-0.59	1.83	3.32	10.35
Industrial 25	108945.90	109921.45	-0.89	0.88	1.06	5.04
Resource 10	60942.30	62398.67	-2.33	2.35	3.99	5.93
Mid Cap	86699.52	87503.26	-0.92	2.58	2.92	7.82
Small Cap	81182.67	81370.80	-0.23	1.44	2.36	11.99
Banks	12485.23	12549.25	-0.51	1.35	4.51	14.04
Retailers	6780.03	6785.13	-0.08	2.75	0.35	8.77
Property (J253) - TR	2148.01	2131.44	0.78	2.62	4.02	15.25

AMERICAN INDICES	CLOSE	PREVIOUS	1D%	5D%	1M%	YTD%
Dow Jones	40347.97	40842.79	-1.21	1.03	3.01	7.05
Nasdaq	17194.14	17599.40	-2.30	0.07	-3.83	14.54
S&P 500	5446.68	5522.30	-1.37	0.88	-0.52	14.19
US VIX	18.59	16.36	13.63	0.70	52.13	49.32

EUROPEAN INDICES	CLOSE	PREVIOUS	1D%	5D%	1M%	YTD%
CAC 40	7370.45	7531.49	-2.14	0.40	-2.52	-2.29
DAX 30	18069.62	18508.65	-2.37	-1.25	-1.21	7.87
Eurostoxx 50	4768.60	4869.80	-2.08	-0.98	-3.47	5.46
FTSE	8283.36	8367.98	-1.01	1.19	1.43	7.11

ASIAN INDICES	CLOSE	PREVIOUS	1D%	5D%	1M%	YTD%
Hang Seng	17304.96	17344.60	-0.23	1.76	-2.33	1.51
Nikkei 225	38126.33	39101.82	-2.49	0.68	-3.80	13.93
Shanghai	2932.39	2938.75	-0.22	1.58	-2.08	-1.43

EARLY MORNING MARKETS	LAST	CLOSE	% CHG	1D%	5D%	YTD%
TENCENT	359.80	365.60	-1.59	0.94	4.10	25.98
BHP AUS	4192.00	4249.00	-1.34	0.45	3.16	-15.71

NOTE : 5D% and 1M% are rolling percentage moves

INTERNATIONAL ECONOMIC CALENDAR | SELECTED EVENTS

TIME	AREA	TODAY'S EVENTS & RELEASES	PERIOD	EXP.	PREV.
14:30	US	Non Farm Payrolls	Jul	190.00K	206.00K
14:30	US	Unemployment Rate	Jul	4.10%	4.10%
14:30	US	Average Hourly Earnings m/m	Jul	0.30%	0.30%
---	---	---	---	---	---
---	---	---	---	---	---

TIME	AREA	PREVIOUS SESSION'S RELEASES	PERIOD	EXP.	ACT.
11:00	ZA	ABSA Manufacturing PMI	Jul	46.00	52.40
13:00	GB	BoE Interest Rate Decision	---	5.00%	5.00%
13:00	GB	BoE Monetary Policy Report	---	---	---
14:30	US	Initial Jobless Claims	Jul	241K	249K
16:00	US	ISM Manufacturing PMI	Jul	48.20	46.80

JSE ALL SHARE | BEST AND WORST ONE-DAY PERFORMERS

BEST ONE-DAY % PERFORMERS	CODE	CLOSE	1D%	5D%	YTD%
Fairvest Limited B	FTB	420	4.48	7.97	22.09
Growthpoint Prop Ltd	GRT	1264	2.43	3.02	8.22
Anheuser-Busch InBev SA NV	ANH	110639	2.07	-0.81	-7.81
Wilson Bayly Hlm-Ovc Ltd	WBO	18365	2.03	3.16	41.20
Redefine Properties Ltd	RDF	434	1.88	3.83	12.73
Resilient REIT Limited	RES	5119	1.87	3.41	15.58

WORST ONE-DAY % PERFORMERS	CODE	CLOSE	1D%	5D%	YTD%
Anglo American Plat Ltd	AMS	65470	-7.33	-5.40	-32.09
Sibanye Stillwater Ltd	SSW	1985	-4.84	0.20	-20.28
Northam Platinum Hldgs Ltd	NPH	13632	-4.44	0.39	-2.93
Impala Platinum Hlgs Ltd	IMP	8921	-4.28	-3.05	-2.26
Glencore plc	GLN	9699	-3.94	-4.70	-13.13

DIVIDEND DATA

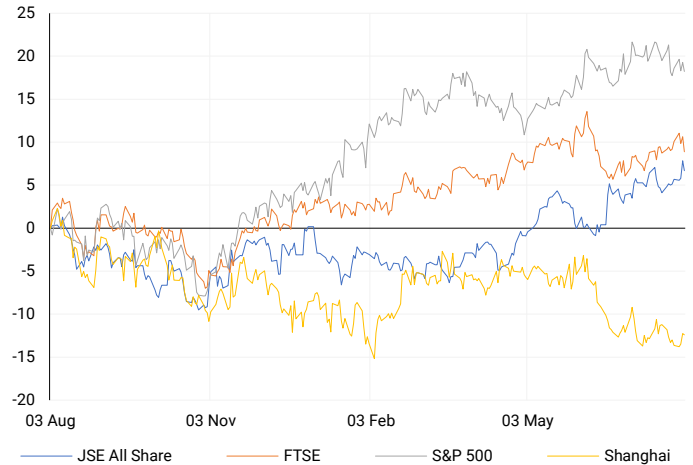
COMPANY	CODE	EXPECTED DIVIDEND	COMPANY	CODE	EXPECTED DIVIDEND
Karoo000	KRO	200 ZARc	---	---	---
Crookes Brothers	CKS	108 USDc	---	---	---
---	---	---	---	---	---
---	---	---	---	---	---
---	---	---	---	---	---

SOURCES | JSE, IRESS, MONEYWEB, CNBC, BBC, CNN

PLEASE SEE THE BOTTOM OF THE LAST PAGE FOR THE FULL DISCLAIMER

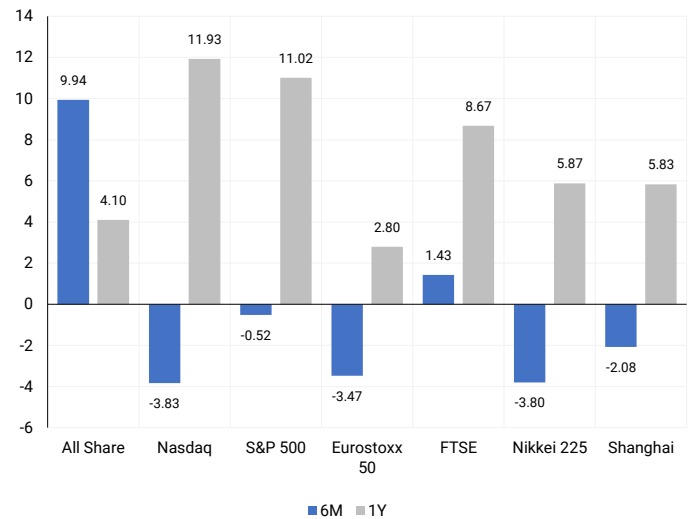
INTERNATIONAL INDICES

Normalised percentage performances - In rand terms



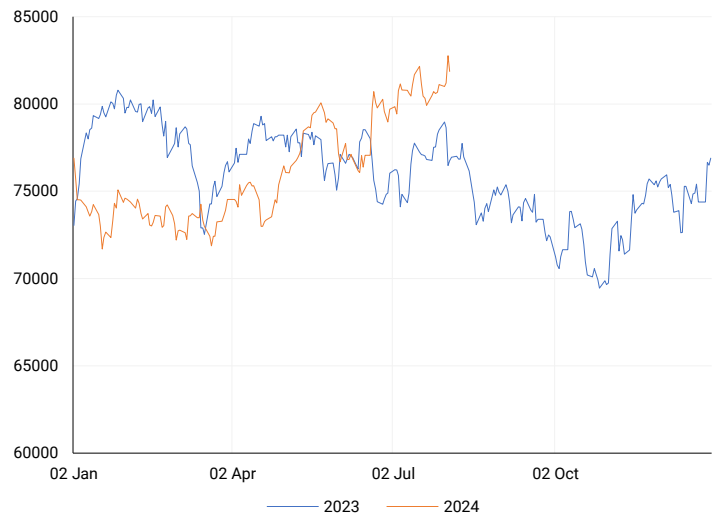
INTERNATIONAL INDICES

6-month & 1-year percentage performances



JSE ALL SHARE INDEX

2023 v 2024 to date



Last date to trade Mon, 05 August

## LOCAL EQUITIES | JSE LARGE CAP COMPANIES (Cents Per Share)

COMPANY	CLOSE	PREVIOUS	1D%	5D%	1M%	YTD%
Absa Group Limited	15784	15980	-1.23	-3.34	-0.62	-3.59
Anglo American plc	53606	55169	-2.83	0.99	-4.62	13.21
Anglo American Plat Ltd	65470	70650	-7.33	-5.40	15.16	-32.09
Anglogold Ashanti Ltd	50948	52260	-2.51	2.86	11.14	44.16
Anheuser-Busch InBev SA NV	110639	108400	2.07	-0.81	3.60	-7.81
BHP Group Limited	49561	50125	-1.13	-1.01	-5.60	-21.76
BID Corporation Ltd	44387	45331	-2.08	-0.95	7.28	4.04
British American Tob plc	64625	63996	0.98	0.88	14.29	19.34
Compagnie Fin Richemont	267450	276824	-3.39	-2.04	-5.25	4.16
Capitec Bank Hldgs Ltd	285802	283600	0.78	3.24	7.63	41.04
Discovery Ltd	14182	14280	-0.69	3.59	1.29	-1.29
Firststrand Ltd	8081	8170	-1.09	0.91	4.11	9.93
Gold Fields Ltd	31294	31920	-1.96	5.68	15.20	12.66
Glencore plc	9699	10097	-3.94	-4.70	-9.16	-13.13
Impala Platinum Hlgs Ltd	8921	9320	-4.28	-3.05	1.38	-2.26
Kumba Iron Ore Ltd	39311	39729	-1.05	-0.81	-12.08	-36.06
Mondi plc	36100	35733	1.03	-1.16	2.71	-0.55
MTN Group Ltd	7736	7911	-2.21	0.44	-9.45	-33.02
Naspers Ltd -N-	347115	352221	-1.45	0.61	0.12	10.97
Prosus N.V.	62879	63489	-0.96	-0.25	-2.25	12.21
South32 Limited	3693	3709	-0.43	4.06	-18.48	-12.47
Standard Bank Group Ltd	22192	22178	0.06	1.63	4.54	6.64
Shoprite Holdings Ltd	30270	30453	-0.60	3.29	3.84	10.05
Sanlam Limited	8046	8155	-1.34	3.15	-2.67	10.52
Sasol Limited	14723	14735	-0.08	2.81	5.85	-20.54
Sibanye Stillwater Ltd	1985	2086	-4.84	0.20	3.60	-20.28
Vodacom Group Ltd	9928	10222	-2.88	0.94	3.85	-6.34

## SOUTH AFRICAN MARKET SUMMARY

### SELECTED ITEMS

The Top-40 index fell by about 1.25% on the stock market. Meanwhile, South African manufacturing activity increased in July, according to a PMI survey, due to rising domestic and global demand. ArcelorMittal SA reported a fall in second-quarter profit, attributing the unsustainable steel market conditions to Chinese exports. Anheuser-Busch InBev NV sold less beer than expected in the second quarter, impacted by reduced demand in China and slow recovery of US sales after the Bud Light boycott.

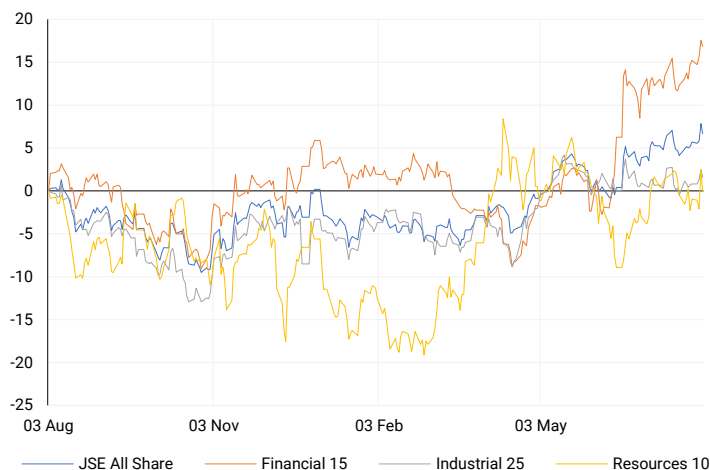
### JSE ALL SHARE

One-year



### LOCAL INDICES

Normalised percentage performances



### EXPECTED COMPANY REPORTING SCHEDULE

COMPANY	CODE	RELEASE	DATE
AngloGold Ashanti	ANG	Interim	2 Aug '24
Mondi	MNP	Interim	2 Aug '24
JSE	JSE	Interim	2 Aug '24
Mpact	MPT	Interim	5 Aug '24
Glencore	GLN	Interim	7 Aug '24

### BANK AND OTHER SELECTE PREFERENCE SHARES

COMPANY	CODE	CLOSE	CLEAN YIELD	NEXT LDT (Est.)
Investec Limited	INPR	8696	11.24	Thu, 06 Jun '24
Standard Bank	SBPP	8800	11.15	Thu, 05 Sep '24
Absa	ABSP	79800	11.48	Thu, 12 Sep '24
Capitec	CPIP	10000	9.69	Thu, 19 Sep '24
Steinhoff	SHFF	9734	10.47	Thu, 17 Oct '24
Grindrod	GNDP	9150	12.22	Thu, 19 Sep '24
Netcare	NTCP	8250	11.82	Thu, 31 Oct '24
Discovery	DSBP	9800	11.91	Thu, 19 Sep '24
Invicta	IVTP	---	13.41	Thu, 27 Jun '24

### LOCAL SENS ANNOUNCEMENTS

#### SELECTED RELEASE

#### ANHEUSER-BUSCH INBEV SA/NV – Second Quarter and Half Year 2024 Results

In the second quarter of 2024 (2Q24), total revenue increased by 2.7%, driven by a 3.6% growth in revenue per hectoliter. For the first half of 2024 (HY24), revenue also rose by 2.7% with a 3.5% increase in revenue per hectoliter. The company's megabrands saw a combined revenue increase of 3.3%, particularly led by Corona's 5.6% growth outside its home market. Approximately 70% of revenue comes from B2B digital platforms, with BEES reaching 3.8 million monthly active users, and the digital direct-to-consumer ecosystem generating around 140 million USD in 2Q24. Despite a 0.8% decline in total volumes, normalized EBITDA grew by 10.2% to 5 302 million USD in 2Q24, with a margin expansion to 34.6%. For HY24, normalized EBITDA increased by 7.8% to 10 288 million USD. Underlying profit for 2Q24 was 1 811 million USD, up from 1 452 million USD in 2Q23, and 3 320 million USD in HY24, up from 2 762 million USD in HY23. Underlying EPS rose to 0.90 USD in 2Q24 from 0.72 USD in 2Q23, and to 1.66 USD in HY24 from 1.37 USD in HY23. The net debt to normalized EBITDA ratio was 3.42x as of June 30, 2024, compared to 3.70x a year earlier.

ANH | 2.07% OPEN | 111760c HIGH | 112325c LOW | 108547c CLOSE | 110639c TIME | 08:25

#### MONDI PLC – Results

In the first half of 2024, the group revenue from continuing operations was €3,739 million, down 4% from €3,881 million in the same period in 2023. Underlying EBITDA decreased by 17% to €565 million, with a margin drop from 17.5% to 15.1%. Profit before tax fell by 29% to €296 million. Basic underlying earnings per share declined by 25% to 50.5 euro cents, and basic earnings per share decreased by 30% to 44.5 euro cents. The interim dividend per share remained unchanged at 23.33 euro cents, while a special dividend of 160.00 euro cents was introduced. Cash generated from operations fell by 33% to €372 million. The net debt to underlying EBITDA ratio increased from 0.8 to 1.5 times. The return on capital employed (ROCE) dropped from 19.1% to 10.8%. When considering both continuing and discontinued operations, basic headline earnings per share fell by 55% to 41.8 euro cents.

MNP | 1.03% OPEN | 35702c HIGH | 36691c LOW | 35519c CLOSE | 36100c TIME | 08:00

#### CAPITAL & REGIONAL PLC – Half year Results

In the first half of 2024, revenue increased to £34.5 million from £28.5 million in the same period in 2023. Net rental income rose to £13.7 million from £11.7 million. Adjusted profit grew to £8.2 million from £7.0 million, although adjusted earnings per share (diluted) decreased to 3.6p from 4.1p. Headline earnings per share (diluted) also dropped to 2.8p from 4.0p. IFRS profit for the period fell to £4.5 million from £6.1 million, and basic earnings per share (diluted) decreased to 2.0p from 3.5p. The total dividend per share increased slightly to 2.85p from 2.75p. Net asset value (NAV) rose to £203.9 million from £183.2 million, but NAV per share decreased to 88p from 106p. EPRA NTA per share dropped to 85p from 102p. Group net debt increased to £162.6 million from £138.5 million, with the net debt to property value ratio rising slightly to 43% from 42%.

CRP | 0.50% OPEN | 1600c HIGH | 1631c LOW | 1573c CLOSE | 1600c TIME | 08:00

**LOCAL EQUITIES | JSE MID CAP COMPANIES** (Cents Per Share)

COMPANY	CODE	CLOSE	PREVIOUS	1D%	1M%	YTD%
Aspen Pharmacare Hldgs Ltd	APN	25133	25186	-0.21	10.06	23.50
African Rainbow Min Ltd	ARI	21271	21600	-1.52	-5.90	6.36
AVI Ltd	AVI	9814	9780	0.35	1.11	19.58
Barloworld Ltd	BAW	9200	9295	-1.02	8.24	16.46
Bidvest Ltd	BVT	27159	27335	-0.64	-6.11	7.65
Bytes Technology Grp PLC	BYI	11523	11806	-2.40	-8.81	-19.54
Capital&Counties Prop plc	CCO	3562	3568	-0.17	9.94	9.60
Clicks Group Ltd	CLS	35474	35400	0.21	3.46	8.91
Dis-Chem Pharmacies Ltd	DCP	3563	3579	-0.45	4.79	16.10
Exxaro Resources Ltd	EXX	19122	19487	-1.87	6.55	-6.48
Fortress Real Est INV B	FFB	1710	1711	-0.06	3.07	19.08
Growthpoint Prop Ltd	GRT	1264	1234	2.43	2.02	8.22
Harmony GM Co Ltd	HAR	17565	17802	-1.33	4.62	46.88
Hammerson plc	HMN	677	675	0.30	4.15	-0.44
Investec Ltd	INL	13855	14220	-2.57	2.71	10.32
Investec plc	INP	13994	14329	-2.34	2.97	11.11
Italtile Ltd	ITE	1180	1200	-1.67	1.81	5.36
Life Healthc Grp Hldgs Ltd	LHC	1333	1335	-0.15	3.09	-27.44
MultiChoice Group Ltd	MCG	10959	10930	0.27	1.61	35.26
Montauk Renewables Inc	MKR	10800	10694	0.99	3.85	-37.21
Mr Price Group Ltd	MRP	21700	21630	0.32	3.46	38.38
Momentum Met Hldgs Ltd	MTM	2678	2682	-0.15	14.05	22.34
Ninety One Plc	N91	3949	4033	-2.08	0.77	-8.42
Nedbank Group Ltd	NED	27735	27806	-0.26	6.76	28.27
Northam Platinum Hldgs Ltd	NPH	13632	14266	-4.44	13.29	-2.93
NEPI Rockcastle N.V.	NRP	13750	13772	-0.16	6.44	8.80
Netcare Limited	NTC	1300	1300	0.00	-0.31	-8.71
Ninety One Limited	NY1	3892	3977	-2.14	0.65	-9.43
Old Mutual Limited	OMU	1213	1232	-1.54	-3.73	-7.12
OUTsurance Group Ltd	OUT	4747	4830	-1.72	3.31	12.49
Pick n Pay Stores Ltd	PIK	2294	2325	-1.33	3.84	-1.42
Pepkor Holdings Ltd	PPH	2040	2039	0.05	4.29	3.92
Quilter Plc	QLT	3126	3114	0.39	13.84	28.75
Redefine Properties Ltd	RDF	434	426	1.88	2.36	12.73
Remgro Ltd	REM	13767	13999	-1.66	-2.24	-15.27
Resilient REIT Limited	RES	5119	5025	1.87	5.96	15.58
Reinet Investments S.C.A	RNI	48323	49040	-1.46	6.13	3.65
Sappi Ltd	SAP	5275	5320	-0.85	2.71	19.34
Santam Limited	SNT	32206	32296	-0.28	-4.43	12.38
The Spar Group Ltd	SPP	12542	12547	-0.04	2.80	6.38
Sirius Real Estate Ltd	SRE	2222	2216	0.27	2.68	0.32
Tiger Brands Ltd	TBS	22200	22284	-0.38	4.81	10.29
Transaction Capital Ltd	TCP	279	284	-1.76	-6.38	-65.04
The Foschini Group Limited	TFG	13500	13442	0.43	4.83	21.67
Thungela Resources Ltd	TGA	12263	12083	1.49	7.80	-20.27
Telkom SA SOC Ltd	TKG	2360	2361	-0.04	-1.71	-20.65
Truworths Int Ltd	TRU	9100	9048	0.57	-5.98	22.39
Woolworths Holdings Ltd	WHL	5967	6020	-0.88	-6.16	-17.35
Zeda Limited	ZZD	1250	1250	0.00	-3.33	-1.96

**LOCAL EQUITIES | JSE SMALL CAP COMPANIES** (Cents Per Share)

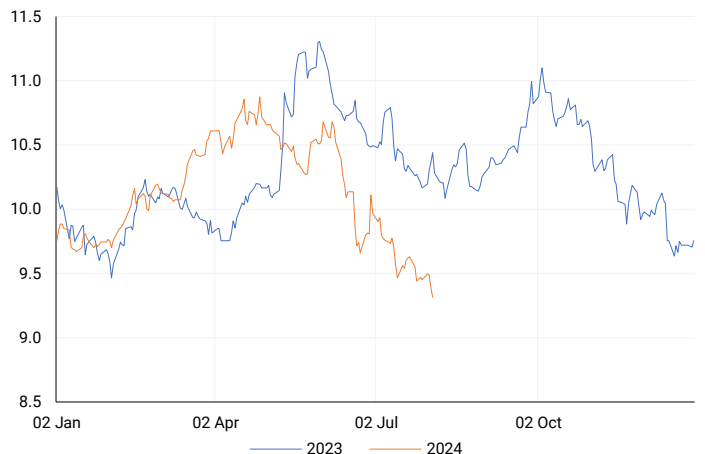
COMPANY	CODE	CLOSE	PREVIOUS	1D%	1M%	YTD%
ArcelorMittal SA Limited	ACL	136	133	2.26	9.68	-17.07
ADVTECH Ltd	ADH	3001	3033	-1.06	1.73	22.29
Altron Limited A	AEL	1699	1720	-1.22	20.67	65.76
AECI Limited	AFE	10389	10631	-2.28	-4.68	-5.29
Alexander Forbes Grp Hldgs	AFH	665	665	0.00	-7.64	0.76
Afrimat Limited	AFT	6848	6858	-0.15	-6.80	8.70
African Rainbow Cap Inv	AIL	675	674	0.15	3.69	38.04
Adcock Ingram Hldgs Ltd	AIP	5815	5772	0.74	-4.67	-3.24
Astral Foods Ltd	ARL	17163	17241	-0.45	2.78	17.10
Attacq Limited	ATT	1080	1093	-1.19	-2.44	17.14
Brait PLC	BAT	90	90	0.00	26.44	-50.55
Blue Label Telecoms Ltd	BLU	430	432	-0.46	6.17	10.82
Burstone Group	BTN	787	786	0.13	10.38	-1.63
Coronation Fund Mngrs Ld	CML	3731	3739	-0.21	2.08	19.74
Curro Holdings Limited	COH	1214	1213	0.08	3.50	4.21
Cashbuild Ltd	CSB	16800	16924	-0.73	5.11	0.64
DRD Gold Ltd	DRD	1821	1855	-1.83	15.03	15.47
Datatec Ltd	DTC	3546	3573	-0.76	-5.44	-12.44
Emira Property Fund Ltd	EMI	1093	1084	0.83	2.63	27.84
Equites Prop Fund Ltd	EQU	1313	1309	0.31	3.63	-5.88
Famous Brands Ltd	FBR	5434	5391	0.80	0.76	-6.20
Fairvest Limited B	FTB	420	402	4.48	6.33	22.09
Grindrod Ltd	GND	1560	1556	0.26	-0.95	36.13
Hosken Cons Inv Ltd	HCI	18390	18636	-1.32	3.31	-9.23
Hudaco Industries Ltd	HDC	18325	18200	0.69	2.95	14.08
Hyprop Inv Ltd	HYP	3265	3229	1.11	-0.70	4.95
JSE Ltd	JSE	10720	10650	0.66	-0.56	15.97
KAP Industrial Hldgs Ltd	KAP	307	305	0.66	-2.85	17.18
Karooooo Ltd	KRO	67310	69000	-2.45	24.88	41.71
PSG Konsult Limited	KST	1680	1690	-0.59	-3.45	9.45
Libstar Holdings Ltd	LBR	410	391	4.86	13.89	17.14
Lighthouse Properties plc	LTE	820	820	0.00	2.50	11.56
Industrials REIT Limited	MLI	1.6	1.4	14.29	300.00	128.57
MAS P.L.C	MSP	1845	1845	0.00	13.89	6.59
Metair Investments Ltd	MTA	1395	1412	-1.20	27.05	-21.41
Motus Holdings Ltd	MTH	10232	10324	-0.89	3.83	0.81
Murray & Roberts Hldgs	MUR	309	307	0.65	42.40	107.38
Oceana Group Ltd	OCE	7019	6986	0.47	-4.10	-0.68
Omnia Holdings Ltd	OMN	6525	6567	-0.64	-4.70	-0.18
Pan African Resource plc	PAN	679	691	-1.74	10.59	66.01
PPC Limited	PPC	382	381	0.26	8.83	-4.26
Raubex Group Ltd	RBX	4519	4590	-1.55	6.83	63.02
RFG Holdings Limited	RFG	1599	1527	4.72	0.57	18.44
Reunert Ltd	RLO	7250	7180	0.97	-0.63	20.95
SA Corp Real Estate Ltd	SAC	268	269	-0.37	1.52	15.52
Super Group Ltd	SPG	3050	3040	0.33	4.13	2.52
Stor-Age Prop REIT Ltd	SSS	1348	1333	1.13	-4.13	3.22
Southern Sun LTD	SSU	599	616	-2.76	8.91	14.10
Sun International Ltd	SUI	3804	3849	-1.17	-0.03	-7.22
Tharisa plc	THA	2010	2000	0.50	3.08	33.02
Tsogo Sun Gaming Ltd	TSG	1115	1126	-0.98	-2.02	-8.98
Vukile Property Fund Ltd	VKE	1653	1647	0.36	4.75	17.07
Wilson Bayly Hlm-Ovc Ltd	WBO	18365	18000	2.03	11.11	41.20

**10-YEAR BOND YIELD | SELECTED ITEMS** (Basis Point Change)

REGION	YIELD	1D	1M	1Y
United States	3.98%	-5	-48	-4
United Kingdom	3.88%	-9	-40	-51
Germany	2.24%	-6	-36	-31
Japan	1.03%	-1	-2	44
South African 10Y	9.35%	-6	-83	-103

**SOUTH AFRICAN 10-YEAR**

2023 vs 2024 to date

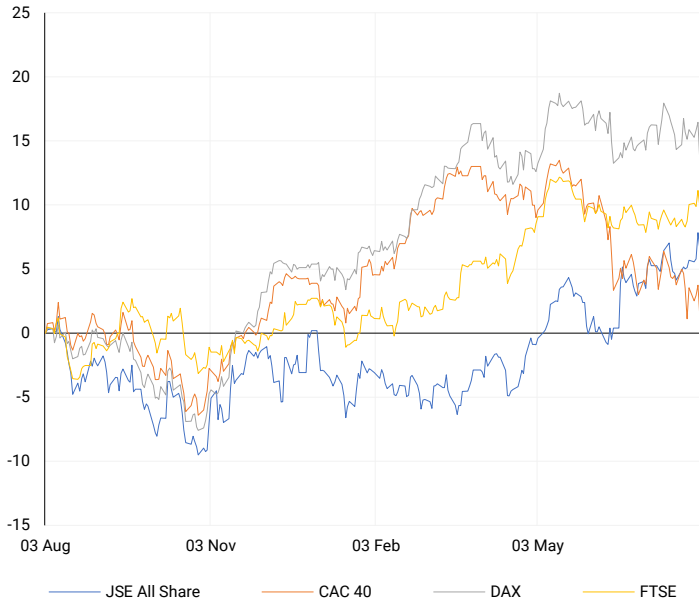


**GLOBAL INTEREST RATES | SELECTED ITEMS**

REGION	DATE CHANGED	CURRENT RATE
United States	Wed, 26 Jul '23	5.25%-5.50%
United Kingdom	Thu, 03 Aug '23	5.25%
European	Thu, 27 Jul '23	4.25%
SA Repo Rate	Thu, 25 May '23	8.25%
SA Prime Rate	Thu, 25 May '23	11.75%

## EUROPEAN INDICES

Normalised percentage performances



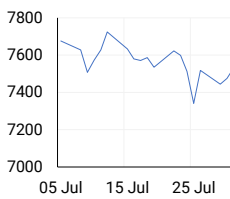
## EUROPEAN MARKET SUMMARY

### SELECTED ITEMS

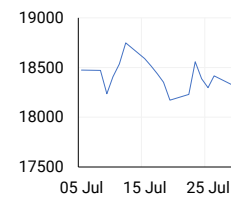
Europe's STOXX 600 dropped by over 1% on Thursday, led by a sell-off in banks after Societe Generale reduced a key target for its French retail division. The Bank of England cut interest rates from 5.25% to 5%, the first reduction in 16 years, with the decision passing by a narrow five-to-four vote. Markets had anticipated a 61% probability of a 25-basis point cut. In economic news, euro zone manufacturing activity stayed in contraction, with the PMI holding steady at 45.8 in July. Germany's manufacturing sector saw a further decline, with the PMI dropping to 43.2 from 43.5 in June.

EUROPEAN INDICES	CLOSE	PREVIOUS	1D%	5D%	1M%	YTD%
CAC 40	7370.45	7531.49	-2.14	0.40	-2.52	-2.29
DAX 30	18069.62	18508.65	-2.37	-1.25	-1.21	7.87
Eurostoxx 50	4768.60	4869.80	-2.08	-0.98	-3.47	5.46
FTSE	8283.36	8367.98	-1.01	1.19	1.43	7.11

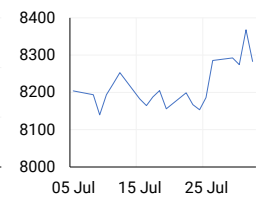
### CAC 40



### DAX

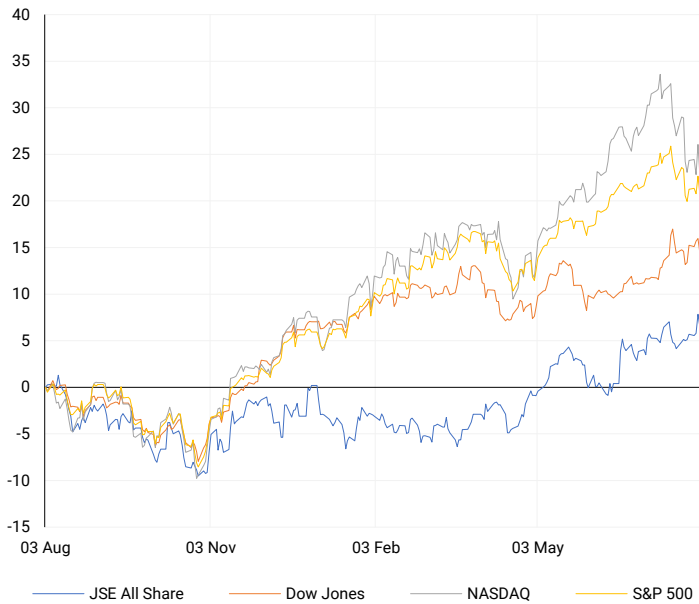


### FTSE



## AMERICAN INDICES

Normalised percentage performances



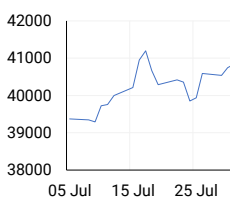
## AMERICAN MARKET SUMMARY

### SELECTED ITEMS

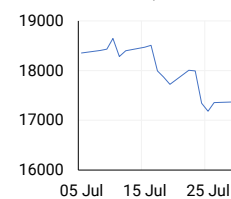
U.S. stocks started August with a sharp decline after economic data raised concerns that the economy might be slowing faster than expected while the Federal Reserve continues its restrictive monetary policy. Initially, stocks rose due to Meta Platforms' strong quarterly results and positive outlook for the third quarter. However, gains disappeared after the Institute for Supply Management (ISM) reported that manufacturing activity dropped to an eight-month low in July, indicating contraction. Additionally, new unemployment claims reached an 11-month high last week.

AMERICAN INDICES	CLOSE	PREVIOUS	1D%	5D%	1M%	YTD%
Dow Jones	40347.97	40842.79	-1.21	1.03	3.01	7.05
Nasdaq	17194.14	17599.40	-2.30	0.07	-3.83	14.54
S&P 500	5446.68	5522.30	-1.37	0.88	-0.52	14.19
US VIX	18.59	16.36	13.63	0.70	52.13	49.32

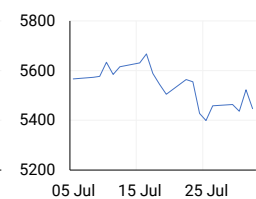
### DOW JONES



### NASDAQ

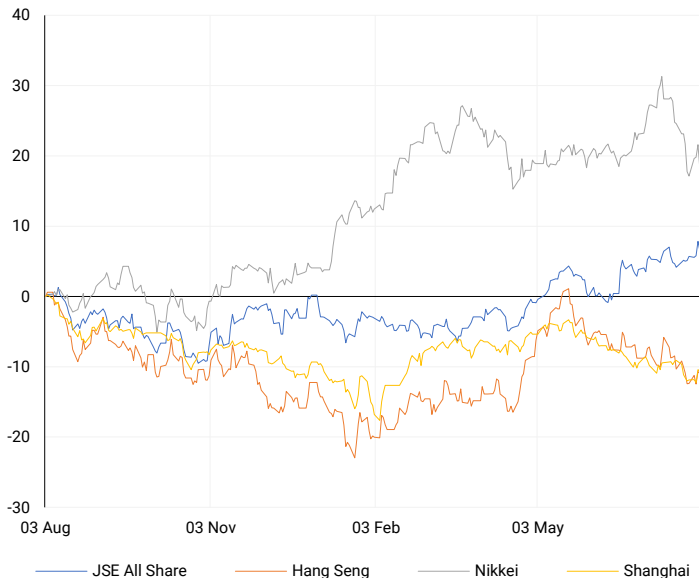


### S&P 500



## ASIAN INDICES

Normalised percentage performances



## ASIAN MARKET SUMMARY

### SELECTED ITEMS

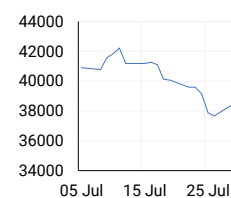
Japan's benchmark indexes plunged up to 5% this morning, leading to a broad decline in Asia-Pacific markets. The Nikkei continued its descent on Thursday, reaching its lowest level since February. Japanese government bond yields fell, with the benchmark 10-year JGB yield dropping below 1%, its lowest since June 20. Meanwhile, South Korea's July inflation numbers were slightly higher than expected, with the consumer price index rising 2.6% year-on-year compared to the 2.5% forecasted by economists polled by Reuters.

ASIAN INDICES	CLOSE	PREVIOUS	1D%	5D%	1M%	YTD%
Hang Seng	17304.96	17344.60	-0.23	1.76	-2.33	1.51
Nikkei 225	38126.33	39101.82	-2.49	0.68	-3.80	13.93
Shanghai	2932.39	2938.75	-0.22	1.58	-2.08	-1.43

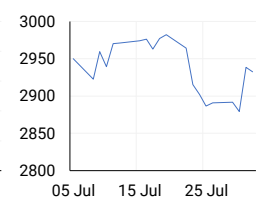
### HANG SENG



### NIKKEI



### SHANGHAI



## COMMODITIES MARKET SUMMARY

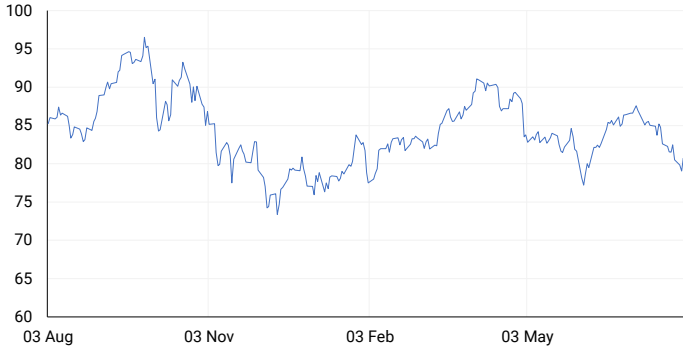
### SELECTED ITEMS

Gold prices edged up this morning and were on track for a weekly gain, fuelled by expectations of a potential Federal Reserve rate cut in September and escalating tensions in the Middle East. Market participants were also awaiting U.S. nonfarm payrolls data for further guidance. Meanwhile, oil prices rose this morning but were poised for a fourth consecutive weekly decline due to signs of weak global fuel demand growth overshadowing concerns about supply disruptions in the Middle East.

COMMODITY	LAST	CLOSE	% CHG	1D%	5D%	YTD%
Brent Crude	80.02	80.12	-0.12	-0.74	-2.86	3.94
Gold	2457.84	2446.41	0.47	-0.04	3.47	18.58
Palladium	909.57	906.00	0.39	-2.48	-0.38	-17.43
Platinum	970.65	963.70	0.72	-1.57	2.73	-2.39
Silver	28.84	28.51	1.16	-1.72	2.37	19.85

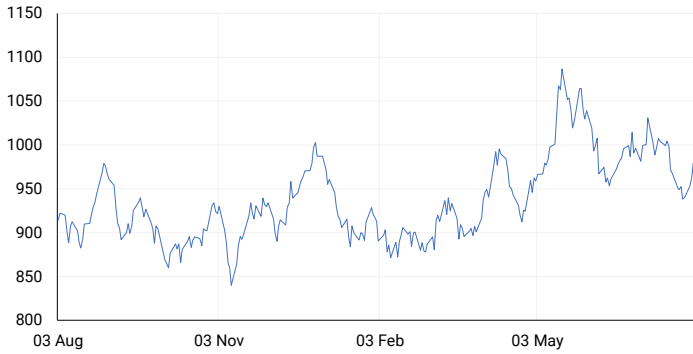
### BRENT CRUDE

One-year



### PLATINUM

One-year



### GOLD

One-year



CURRENCY PAIR	LAST	CLOSE	% CHG	1D%	5D%	YTD%
USDZAR	18.27	18.28	-0.05	0.52	-0.45	-0.22
GBPZAR	23.25	23.29	-0.16	-0.57	-1.42	-0.04
EURZAR	19.73	19.72	0.05	0.09	-0.98	-2.34
AUDZAR	11.90	11.88	0.13	-0.23	-1.00	-4.62
EURUSD	1.08	1.08	0.04	-0.31	-0.49	-2.23
USDJPY	149.34	149.35	-0.01	-0.42	-2.98	5.90
GBPUSD	1.27	1.27	-0.13	-0.90	-0.87	0.06
USDCHF	0.87	0.87	-0.10	-0.60	-0.98	3.73

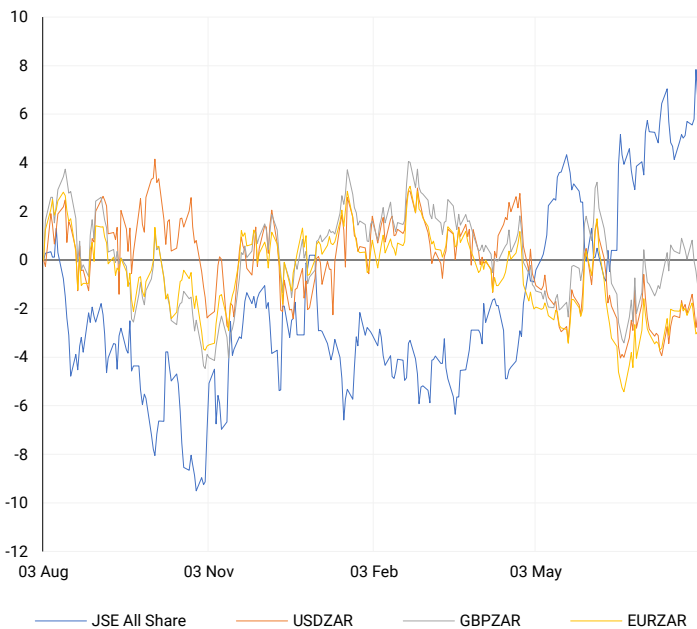
## CURRENCY MARKET SUMMARY

### SELECTED ITEMS

South Africa's rand strengthened on Thursday as investors anticipated a September interest rate cut in the U.S. following dovish remarks by the Federal Reserve. Meanwhile, the dollar rose due to increasing geopolitical tensions, while the British pound fell after the Bank of England cut interest rates from a 16-year high.

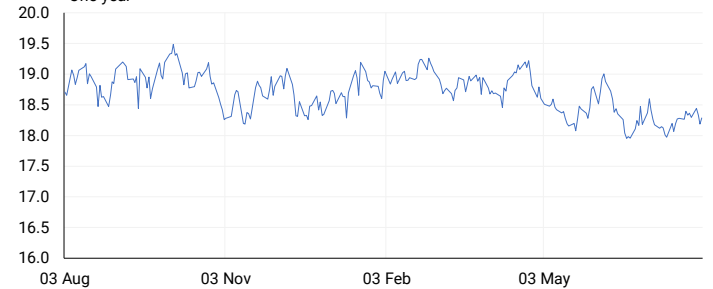
### CURRENCY PAIRS vs JSE ALL SHARE

Normalised percentage performances



### USDZAR

One-year



### EURUSD

One-year



SOURCES | JSE, IRESS, MONEYWEB, CNBC, BBC, CNN

**Disclaimer:** This note is prepared for Sanlam Private Wealth (Pty) Ltd, by K2013143132 (Pty) Ltd trading as ThompsonGreen. ThompsonGreen is an independent company contracted to Sanlam Private Wealth (Pty) Ltd. The views expressed in this note are those of ThompsonGreen and/or its analysts and not necessarily the views of Sanlam Private Wealth (Pty) Ltd, Sanlam or any officer or agent thereof. K2013143132 (Pty) Ltd trading as ThompsonGreen is a research house and not a registered broker, financial adviser or financial service provider. Our editors and customer services teams also do not give personal investment advice. The information in this document is general advice only and may not be appropriate to your particular investment objectives, financial situation or particular needs. Before investing, or if you are in any doubt about your personal situation, you should seek professional advice from a stockbroker or independent financial adviser authorised by the Financial Sector Conduct Authority.