

GLOBAL OVERVIEW | SELECTED INDICES

SOUTH AFRICAN INDICES						
	CLOSE	PREVIOUS	1D%	5D%	1M%	YTD%
All Share	79577.61	80538.57	-1.19	-1.77	-1.51	3.49
Top 40	72595.10	73449.42	-1.16	-1.73	-1.54	2.98
Financial 15	19138.44	19419.78	-1.45	-1.19	1.01	7.08
Industrial 25	106807.00	107624.51	-0.76	-1.19	-1.07	2.98
Resource 10	58297.70	59219.51	-1.56	-3.30	-5.89	1.33
Mid Cap	83729.00	85287.08	-1.83	-1.38	-1.38	4.12
Small Cap	79509.40	80451.13	-1.17	-1.51	-1.36	9.68
Banks	12103.40	12309.19	-1.67	-1.50	2.14	10.55
Retailers	6598.32	6693.50	-1.42	-1.09	-1.24	5.85
Property (J253) - TR	2128.03	2128.03	0.00	0.68	1.86	14.18
AMERICAN INDICES						
	CLOSE	PREVIOUS	1D%	5D%	1M%	YTD%
Dow Jones	38703.27	39737.26	-2.60	-4.53	-1.71	2.69
Nasdaq	16200.08	16776.16	-3.43	-6.74	-11.73	7.92
S&P 500	5186.33	5346.56	-3.00	-5.07	-6.84	8.73
US VIX	38.57	23.39	64.90	132.35	209.05	209.80
EUROPEAN INDICES						
	CLOSE	PREVIOUS	1D%	5D%	1M%	YTD%
CAC 40	7148.99	7251.80	-1.42	-3.96	-6.86	-5.23
DAX 30	17339.00	17661.22	-1.82	-5.36	-6.15	3.51
Eurostoxx 50	4568.90	4636.75	-1.46	-5.09	-8.22	1.04
FTSE	8008.23	8174.71	-2.04	-3.43	-2.39	3.56
ASIAN INDICES						
	CLOSE	PREVIOUS	1D%	5D%	1M%	YTD%
Hang Seng	16698.36	16945.51	-1.46	-3.13	-6.19	-2.05
Nikkei 225	31458.42	35909.70	-12.40	-18.22	-23.11	-5.99
Shanghai	2860.70	2905.34	-1.54	-1.08	-3.03	-3.84
EARLY MORNING MARKETS						
	LAST	CLOSE	% CHG	1D%	5D%	YTD%
TENCENT	359.80	365.60	-1.59	0.94	4.10	25.98
BHP AUS	4192.00	4249.00	-1.34	0.45	3.16	-15.71

NOTE : 5D% and 1M% are rolling percentage moves

INTERNATIONAL ECONOMIC CALENDAR | SELECTED EVENTS

TIME	AREA	TODAY'S EVENTS & RELEASES	PERIOD	EXP.	PREV.
10:30	GB	S&P Global Construction PMI	Jul	52.40	52.20
---	---	---	---	---	---
---	---	---	---	---	---
---	---	---	---	---	---
---	---	---	---	---	---
TIME	AREA	PREVIOUS SESSION'S RELEASES	PERIOD	EXP.	ACT.
9:15	ZA	S&P Global PMI	Jul	49.70	49.30
15:45	US	S&P Global Services PMI Final	Jul	56.00	55.00
16:00	US	ISM Services PMI	Jul	51.00	51.40
---	---	---	---	---	---
---	---	---	---	---	---

JSE ALL SHARE | BEST AND WORST ONE-DAY PERFORMERS

BEST ONE-DAY % PERFORMERS						
	CODE	CLOSE	1D%	5D%	YTD%	
Hyprop Inv Ltd	HYP	3259	1.65	1.24	4.76	
SA Corp Real Estate Ltd	SAC	272	1.12	0.37	17.24	
Naspers Ltd -N-	NPN	344781	0.98	0.41	10.22	
Fortress Real Est Inv B	FFB	1703	0.95	0.29	139.86	
Bytes Technology Grp PLC	BYI	11300	0.89	-2.80	-21.09	
Prosus N.V.	PRX	62735	0.78	-0.34	11.95	
WORST ONE-DAY % PERFORMERS						
	CODE	CLOSE	1D%	5D%	YTD%	
Tharisa plc	THA	1780	-11.00	-8.72	17.80	
Brait PLC	BAT	84	-6.67	1.20	-53.85	
Metair Investments Ltd	MTA	1290	-6.05	-9.15	-27.32	
Impala Platinum Hlgs Ltd	IMP	8301	-5.78	-6.13	-9.05	
DRD Gold Ltd	DRD	1691	-5.05	-6.42	7.23	

DIVIDEND DATA

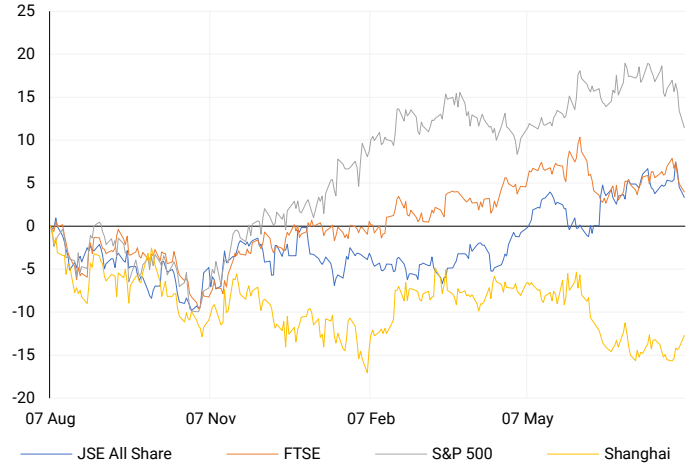
COMPANY	CODE	EXPECTED DIVIDEND	COMPANY	CODE	EXPECTED DIVIDEND
Karoo000	KRO	200 ZARc	---	---	---
Crookes Brothers	CKS	108 USDc	---	---	---
---	---	---	---	---	---
---	---	---	---	---	---
---	---	---	---	---	---

SOURCES | JSE, IRESS, MONEYWEB, CNBC, BBC, CNN

PLEASE SEE THE BOTTOM OF THE LAST PAGE FOR THE FULL DISCLAIMER

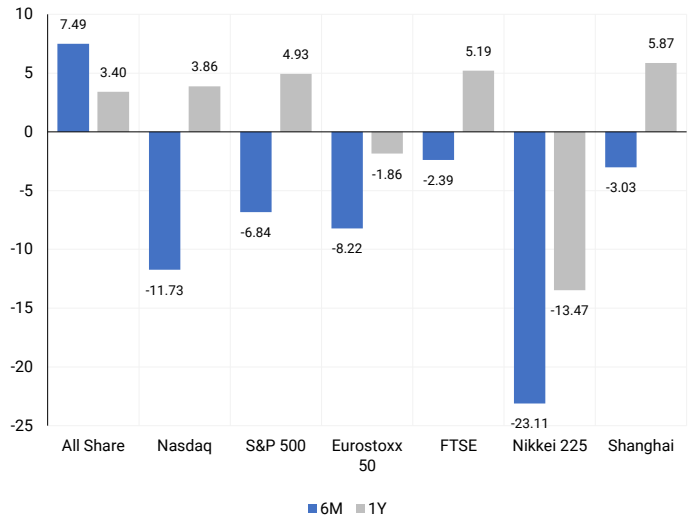
INTERNATIONAL INDICES

Normalised percentage performances - In rand terms



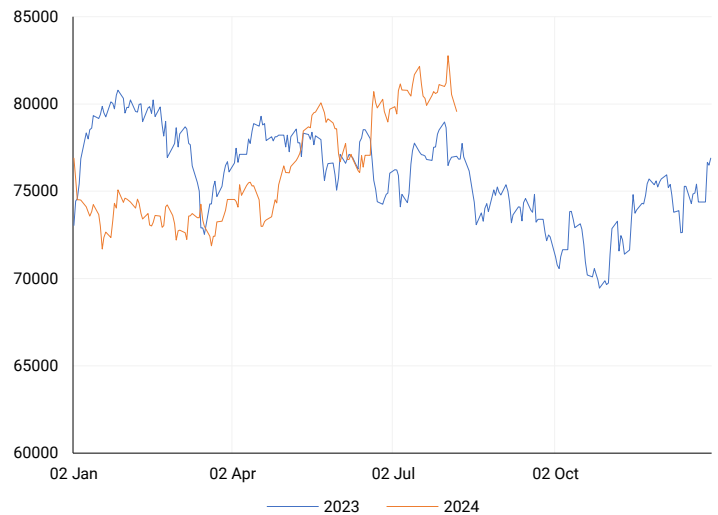
INTERNATIONAL INDICES

6-month & 1-year percentage performances



JSE ALL SHARE INDEX

2023 v 2024 to date



Ex div Mon, 05 August

LOCAL EQUITIES | JSE LARGE CAP COMPANIES (Cents Per Share)

COMPANY	CLOSE	PREVIOUS	1D%	5D%	1M%	YTD%
Absa Group Limited	14830	15417	-3.81	-6.14	-6.22	-9.41
Anglo American plc	51816	52187	-0.71	-6.96	-8.48	9.43
Anglo American Plat Ltd	63968	65517	-2.36	-8.43	-2.32	-33.64
Anglogold Ashanti Ltd	49000	50278	-2.54	-2.31	-2.97	38.65
Anheuser-Busch InBev SA NV	113000	115292	-1.99	2.36	3.81	-5.84
BHP Group Limited	48538	48825	-0.59	-3.88	-9.82	-23.37
BID Corporation Ltd	43264	43742	-1.09	-2.29	1.82	1.40
British American Tob plc	63286	65226	-2.97	-3.16	10.55	16.87
Compagnie Fin Richemont	269487	270000	-0.19	-3.04	-4.94	4.96
Capitec Bank Hldgs Ltd	276397	281500	-1.81	-0.39	4.83	36.40
Discovery Ltd	13716	13900	-1.32	0.36	-0.97	-4.54
Firststrand Ltd	7872	7997	-1.56	-1.38	2.21	7.09
Gold Fields Ltd	30121	30317	-0.65	0.57	3.94	8.43
Glencore plc	9200	9418	-2.31	-9.54	-18.04	-17.60
Impala Platinum Hlgs Ltd	8301	8810	-5.78	-6.13	-15.76	-9.05
Kumba Iron Ore Ltd	38359	38187	0.45	-4.10	-18.10	-37.61
Mondi plc	33305	33919	-1.81	-9.24	-6.44	-8.25
MTN Group Ltd	7461	7514	-0.71	-1.47	-10.48	-35.40
Naspers Ltd -N-	344781	341451	0.98	0.41	-1.77	10.22
Prosus N.V.	62735	62250	0.78	-0.34	-2.81	11.95
South32 Limited	3462	3560	-2.75	-6.15	-26.01	-17.94
Standard Bank Group Ltd	21763	21848	-0.39	-0.41	3.54	4.58
Shoprite Holdings Ltd	28954	29497	-1.84	-1.66	1.47	5.27
Sanlam Limited	7772	7844	-0.92	-1.63	-4.81	6.76
Sasol Limited	13300	13398	-0.73	-6.99	-8.28	-28.22
Sibanye Stillwater Ltd	1863	1946	-4.27	-2.87	-13.43	-25.18
Vodacom Group Ltd	9722	9825	-1.05	-1.69	-3.11	-8.28

SOUTH AFRICAN MARKET SUMMARY

SELECTED ITEMS

On the Johannesburg Stock Exchange, the Top-40 index fell about 2.3%, reflecting a global market sell-off. Telkom, a JSE-listed telecommunications company, announced a 3.9% increase in group revenue for the three months ending 30 June 2024, according to a Sens announcement on Monday. Additionally, Mpact reported a 36% surge in exports in the first half of the year, expressing optimism about packaging prospects as Eskom and Transnet improve their operations.

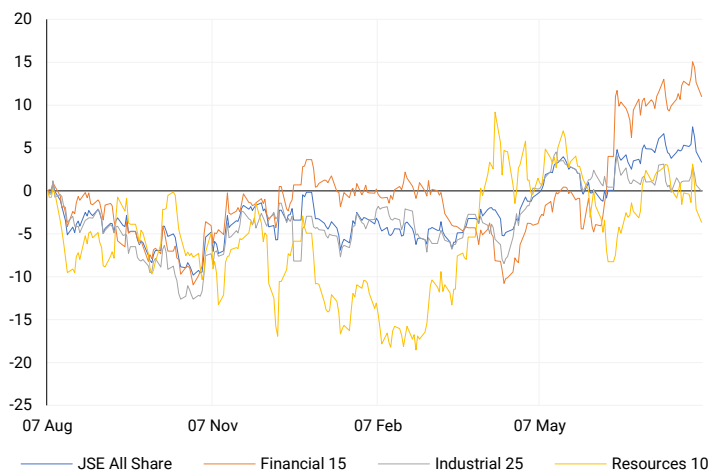
JSE ALL SHARE

One-year



LOCAL INDICES

Normalised percentage performances



LOCAL SENS ANNOUNCEMENTS

SELECTED RELEASE

MPACT LIMITED – Unaudited interim results

Key financial highlights include a 9% increase in net asset value per share to R34.11 from June 2023, satisfactory progress on strategic projects and portfolio optimization, an EBITDA of R763 million, underlying operating profit of R455 million, headline earnings per share of 145 cents, and an interim dividend of 30 cents per share.

MPT | -2.29% OPEN | 2926c HIGH | 3023c LOW | 2901c CLOSE | 2902c TIME | 08:00

TELKOM SA SOC LIMITED – Trading update

Highlights for the first quarter ended 30 June 2024 include a 3.9% increase in group revenue to R10 907 million and a 24.1% rise in group EBITDA to R2 778 million. Telkom Consumer saw mobile revenue grow by 5.3% to R5 737 million, with mobile service revenue up 9.5% and mobile data revenue up 12.9%, resulting in a 35.7% increase in mobile EBITDA to R1 543 million. Openserve's fixed data NGN revenue increased by 7.1%, with EBITDA up 16.8% to R1 023 million and a leading FTTH connectivity rate of 49%. BCX revenue rose by 2.4% to R3,175 million, driven by a 7.1% increase in IT revenue. Swiftnet revenue was up 5.2%, and the group generated R161 million from non-core property disposals.

TKG | -2.07% OPEN | 2300c HIGH | 2380c LOW | 2210c CLOSE | 2270c TIME | 07:30

EXPECTED COMPANY REPORTING SCHEDULE

COMPANY	CODE	RELEASE	DATE
Glencore	GLN	Interim	7 Aug '24
Nedbank	NED	Interim	8 Aug '24
Montauk Renewables	MKR	Interim	9 Aug '24
Eastern Platinum	EPS	Interim	12 Aug '24
---	---	---	---

BANK AND OTHER SELECTE PREFERENCE SHARES

COMPANY	CODE	CLOSE	CLEAN YIELD	NEXT LDT (Est.)
Investec Limited	INPR	8775	11.24	Thu, 06 Jun '24
Standard Bank	SBPP	8924	11.15	Thu, 05 Sep '24
Absa	ABSP	79010	11.48	Thu, 12 Sep '24
Capitec	CPIP	10000	9.69	Thu, 19 Sep '24
Steinhoff	SHFF	9734	10.47	Thu, 17 Oct '24
Grindrod	GNDP	9100	12.22	Thu, 19 Sep '24
Netcare	NTCP	8350	11.82	Thu, 31 Oct '24
Discovery	DSBP	9799	11.91	Thu, 19 Sep '24
Invicta	IVTP	---	13.41	Thu, 27 Jun '24

LOCAL EQUITIES | JSE MID CAP COMPANIES (Cents Per Share)

COMPANY	CODE	CLOSE	PREVIOUS	1D%	1M%	YTD%
Aspen Pharmacare Hldgs Ltd	APN	23544	24290	-3.07	1.91	15.70
African Rainbow Min Ltd	ARI	20244	20746	-2.42	-15.44	1.22
AVI Ltd	AVI	9609	9708	-1.02	-0.64	17.08
Barloworld Ltd	BAW	8880	9099	-2.41	-1.89	12.41
Bidvest Ltd	BVT	26026	26758	-2.74	-8.38	3.16
Bytes Technology Grp PLC	BYI	11300	11200	0.89	-12.77	-21.09
Capital&Counties Prop plc	CCO	3320	3425	-3.07	-2.92	2.15
Clicks Group Ltd	CLS	34800	35225	-1.21	5.20	6.84
Dis-Chem Pharmacies Ltd	DCP	3550	3559	-0.25	4.41	15.67
Exxaro Resources Ltd	EXX	18703	18763	-0.32	-2.03	-8.53
Fortress Real Est INV B	FFB	1703	1687	0.95	3.27	18.59
Growthpoint Prop Ltd	GRT	1254	1251	0.24	1.87	7.36
Harmony GM Co Ltd	HAR	16830	17083	-1.48	-4.54	40.73
Hammerson plc	HMN	665	675	-1.48	-2.21	-2.21
Investec Ltd	INL	13450	13656	-1.51	-0.37	7.09
Investec plc	INP	13542	13699	-1.15	-0.46	7.52
Italtile Ltd	ITE	1199	1200	-0.08	-0.08	7.05
Life Healthc Grp Hldgs Ltd	LHC	1301	1325	-1.81	2.60	-29.18
MultiChoice Group Ltd	MCG	10786	10877	-0.84	3.98	33.13
Montauk Renewables Inc	MKR	10500	11050	-4.98	6.90	-38.95
Mr Price Group Ltd	MRP	21210	21498	-1.34	5.85	35.26
Momentum Met Hldgs Ltd	MTM	2626	2653	-1.02	12.95	19.96
Ninety One Plc	N91	3820	3847	-0.70	-5.47	-11.41
Nedbank Group Ltd	NED	26721	27500	-2.83	4.73	23.58
Northam Platinum Hldgs Ltd	NPH	13220	13580	-2.65	2.09	-5.86
NEPI Rockcastle N.V.	NRP	13689	13631	0.43	4.53	8.32
Netcare Limited	NTC	1284	1301	-1.31	3.13	-9.83
Ninety One Limited	NY1	3772	3797	-0.66	-5.32	-12.22
Old Mutual Limited	OMU	1188	1192	-0.34	-4.27	-9.04
OUTsurance Group Ltd	OUT	4689	4700	-0.23	0.13	11.11
Pick n Pay Stores Ltd	PIK	2226	2259	-1.46	-2.50	-4.34
Pepkor Holdings Ltd	PPH	1975	2022	-2.32	0.41	0.61
Quilter Plc	QLT	2995	3060	-2.12	10.93	23.35
Redefine Properties Ltd	RDF	420	426	-1.41	0.00	9.09
Remgro Ltd	REM	13050	13311	-1.96	-5.59	-19.68
Resilient REIT Limited	RES	5014	4978	0.72	-0.18	13.21
Reinet Investments S.C.A	RNI	46707	48013	-2.72	2.54	0.18
Sappi Ltd	SAP	4742	4908	-3.38	-8.60	7.29
Santam Limited	SNT	31468	31589	-0.38	-3.42	9.81
The Spar Group Ltd	SPP	11944	12306	-2.94	-0.51	1.31
Sirius Real Estate Ltd	SRE	2208	2206	0.09	-1.78	-0.32
Tiger Brands Ltd	TBS	21905	22095	-0.86	3.33	8.82
Transaction Capital Ltd	TCP	279	280	-0.36	-5.42	-65.04
The Foschini Group Limited	TFG	13189	13339	-1.12	2.53	18.86
Thungela Resources Ltd	TGA	12000	12211	-1.73	3.00	-21.98
Telkom SA SOC Ltd	TKG	2270	2318	-2.07	-0.87	-23.67
Truworths Int Ltd	TRU	8782	9000	-2.42	-6.55	18.12
Woolworths Holdings Ltd	WHL	5772	5788	-0.28	-8.64	-20.06
Zeda Limited	ZZD	1155	1230	-6.10	-12.10	-9.41

LOCAL EQUITIES | JSE SMALL CAP COMPANIES (Cents Per Share)

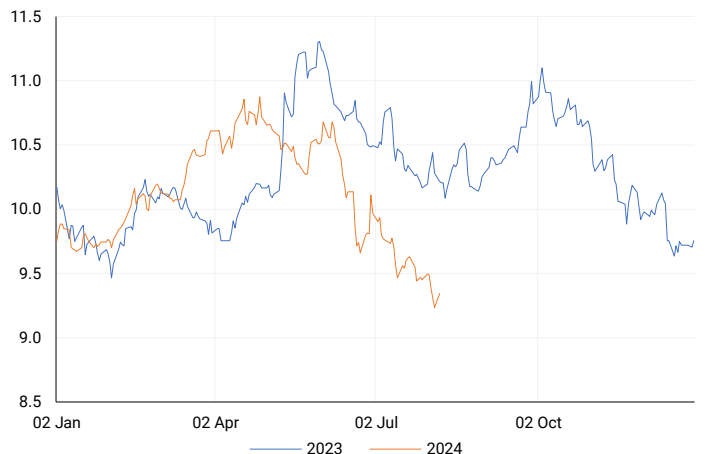
COMPANY	CODE	CLOSE	PREVIOUS	1D%	1M%	YTD%
ArcelorMittal SA Limited	ACL	119	130	-8.46	-4.80	-27.44
ADVTECH Ltd	ADH	2905	2922	-0.58	-2.39	18.38
Altron Limited A	AEL	1675	1700	-1.47	12.49	63.41
AECI Limited	AFE	10267	10401	-1.29	-4.47	-6.40
Alexander Forbes Grp Hldgs	AFH	660	657	0.46	-12.00	0.00
Afrimat Limited	AFT	6644	6756	-1.66	-9.75	5.46
African Rainbow Cap Inv	AIL	678	687	-1.31	4.31	38.65
Adcock Ingram Hldgs Ltd	AIP	5702	5800	-1.69	-5.66	-5.12
Astral Foods Ltd	ARL	16700	16730	-0.18	-1.81	13.94
Attacq Limited	ATT	1080	1083	-0.28	-1.55	17.14
Brait PLC	BAT	84	90	-6.67	12.29	-53.85
Blue Label Telecoms Ltd	BLU	430	427	0.70	5.91	10.82
Burststone Group	BTN	774	782	-1.02	8.71	-3.25
Coronation Fund Mngrs Ld	CML	3644	3724	-2.15	-1.49	16.94
Curro Holdings Limited	COH	1180	1190	-0.84	-4.99	1.29
Cashbuild Ltd	CSB	15700	16500	-4.85	-4.27	-5.95
DRD Gold Ltd	DRD	1691	1781	-5.05	-1.28	7.23
Datatec Ltd	DTC	3460	3499	-1.11	-6.08	-14.57
Emira Property Fund Ltd	EMI	1074	1100	-2.36	-4.45	25.61
Equites Prop Fund Ltd	EQU	1310	1325	-1.13	-1.36	-6.09
Famous Brands Ltd	FBR	5284	5349	-1.22	-1.66	-8.79
Fairvest Limited B	FTB	395	414	-4.59	0.00	14.83
Grindrod Ltd	GND	1529	1538	-0.59	-2.61	33.42
Hosken Cons Inv Ltd	HCI	17575	18144	-3.14	-2.13	-13.25
Hudaco Industries Ltd	HDC	17740	18100	-1.99	-0.73	10.44
Hyprop Inv Ltd	HYP	3259	3206	1.65	-1.24	4.76
JSE Ltd	JSE	10567	10635	-0.64	2.06	14.31
KAP Industrial Hldgs Ltd	KAP	299	306	-2.29	-0.33	14.12
Karooooo Ltd	KRO	64211	67400	-4.73	8.10	35.18
PSG Konsult Limited	KST	1617	1637	-1.22	-6.80	5.34
Libstar Holdings Ltd	LBR	400	401	-0.25	3.90	14.29
Lighthouse Properties plc	LTE	818	818	0.00	0.37	11.29
Industrials REIT Limited	MLI	1.6	1.6	0.00	220.00	128.57
MAS P.L.C	MSP	1806	1865	-3.16	2.50	4.33
Metair Investments Ltd	MTA	1290	1373	-6.05	11.88	-27.32
Motus Holdings Ltd	MTH	10153	10277	-1.21	0.53	0.03
Murray & Roberts Hldgs	MUR	290	306	-5.23	31.82	94.63
Oceana Group Ltd	OCE	6850	7000	-2.14	-3.52	-3.07
Omnia Holdings Ltd	OMN	6434	6490	-0.86	-7.85	-1.58
Pan African Resource plc	PAN	676	690	-2.03	7.30	65.28
PPC Limited	PPC	378	378	0.00	2.44	-5.26
Raubex Group Ltd	RBX	4400	4500	-2.22	-6.78	58.73
RFG Holdings Limited	RFG	1521	1545	-1.55	1.40	12.67
Reunert Ltd	RLO	7086	7174	-1.23	-2.26	18.22
SA Corp Real Estate Ltd	SAC	272	269	1.12	1.12	17.24
Super Group Ltd	SPG	2979	2990	-0.37	-1.42	0.13
Stor-Age Prop REIT Ltd	SSS	1314	1338	-1.79	-2.30	0.61
Southern Sun LTD	SSU	589	608	-3.13	1.90	12.19
Sun International Ltd	SUI	3700	3760	-1.60	-2.63	-9.76
Tharisa plc	THA	1780	2000	-11.00	-13.80	17.80
Tsogo Sun Gaming Ltd	TSG	1113	1110	0.27	-1.77	-9.14
Vukile Property Fund Ltd	VKE	1655	1647	0.49	1.97	17.21
Wilson Bayly Hlm-Ovc Ltd	WBO	17765	18030	-1.47	3.97	36.59

10-YEAR BOND YIELD | SELECTED ITEMS (Basis Point Change)

REGION	YIELD	1D	1M	1Y
United States	3.84%	5	-44	--
United Kingdom	3.87%	4	-26	-51
Germany	2.18%	2	-37	-37
Japan	0.90%	-3	-16	--
South African 10Y	9.36%	11	-61	-89

SOUTH AFRICAN 10-YEAR

2023 vs 2024 to date

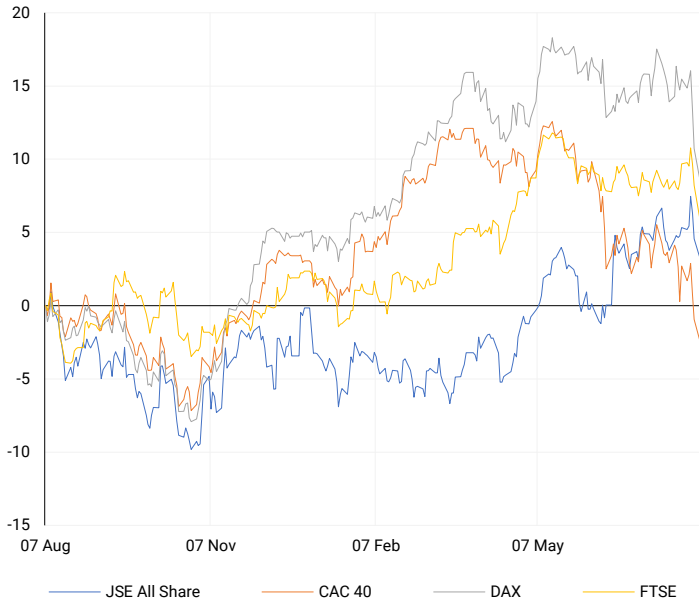


GLOBAL INTEREST RATES | SELECTED ITEMS

REGION	DATE CHANGED	CURRENT RATE
United States	Wed, 26 Jul '23	5.25%-5.50%
United Kingdom	Thu, 03 Aug '23	5.25%
European	Thu, 27 Jul '23	4.25%
SA Repo Rate	Thu, 25 May '23	8.25%
SA Prime Rate	Thu, 25 May '23	11.75%

EUROPEAN INDICES

Normalised percentage performances



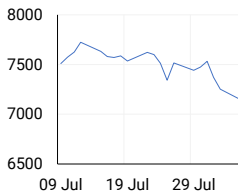
EUROPEAN MARKET SUMMARY

SELECTED ITEMS

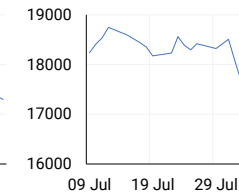
European markets fell sharply at the start of the new trading week but pared losses towards the end of the session amid a global stock sell-off. Economic concerns were underscored by stalled euro zone business activity growth last month. However, U.K. services demand rose in July, with the purchasing managers' index increasing to 52.5 from 52.1. Italy and Spain also showed sustained growth in the sector, though at a slower pace than previous months.

EUROPEAN INDICES	CLOSE	PREVIOUS	1D%	5D%	1M%	YTD%
CAC 40	7148.99	7251.80	-1.42	-3.96	-6.86	-5.23
DAX 30	17339.00	17661.22	-1.82	-5.36	-6.15	3.51
Eurostoxx 50	4568.90	4636.75	-1.46	-5.09	-8.22	1.04
FTSE	8008.23	8174.71	-2.04	-3.43	-2.39	3.56

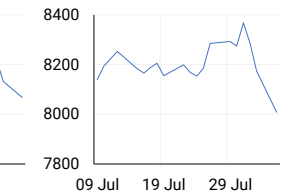
CAC 40



DAX

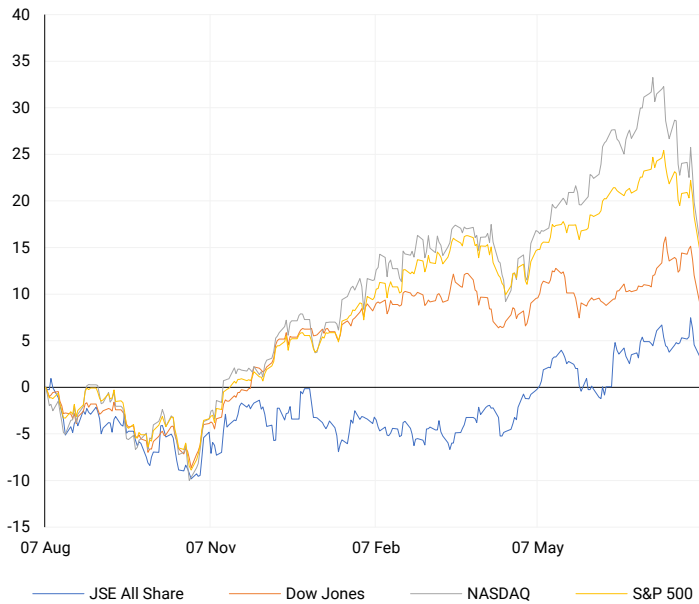


FTSE



AMERICAN INDICES

Normalised percentage performances



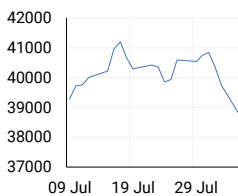
AMERICAN MARKET SUMMARY

SELECTED ITEMS

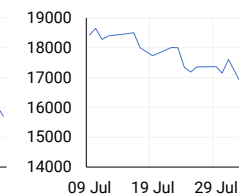
U.S. stocks ended with steep losses on Monday, with the Nasdaq and S&P 500 continuing last week's sell-off amid recession worries and a sharp fall in Apple shares due to a big investor cutting its stake. All three major indexes recorded their largest three-day percentage declines since June 2022, closing at their lowest levels since early May. Recession fears, fuelled by weak economic data, including a soft U.S. payrolls report, shook global markets and drove investors away from risky assets. However, indexes trimmed losses in late morning after data showed a rebound in U.S. services sector activity in July.

AMERICAN INDICES	CLOSE	PREVIOUS	1D%	5D%	1M%	YTD%
Dow Jones	38703.27	39737.26	-2.60	-4.53	-1.71	2.69
Nasdaq	16200.08	16776.16	-3.43	-6.74	-11.73	7.92
S&P 500	5186.33	5346.56	-3.00	-5.07	-6.84	8.73
US VIX	38.57	23.39	64.90	132.35	209.05	209.80

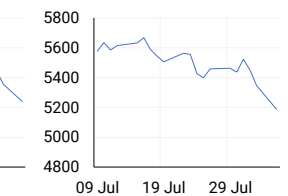
DOW JONES



NASDAQ

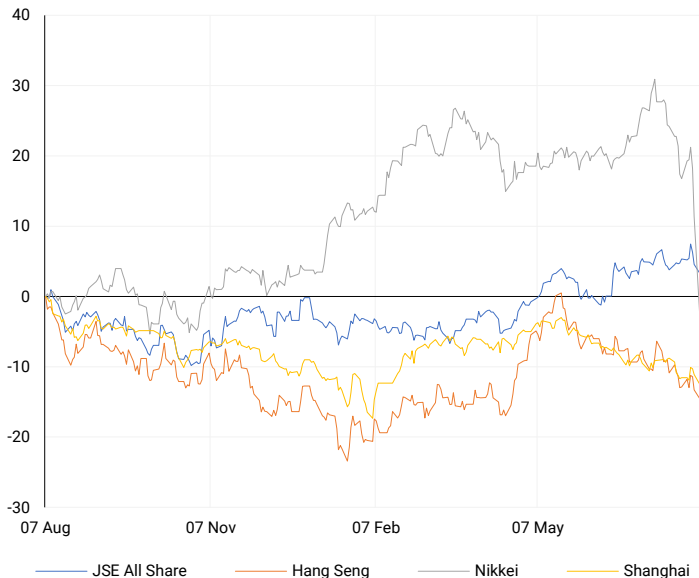


S&P 500



ASIAN INDICES

Normalised percentage performances



ASIAN MARKET SUMMARY

SELECTED ITEMS

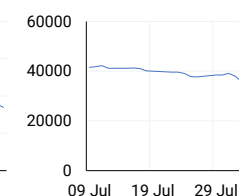
Japanese stocks rebounded sharply this morning, with the Nikkei 225 and Topix recovering from previous losses, and other Asia-Pacific markets also opening higher. Japan's June household spending showed a larger-than-expected 1.4% year-over-year drop in real terms, while the average monthly household income rose 3.1% in real terms. Additionally, real wages in Japan grew by 1.1% in June, marking the first increase in 26 months. This strong wage growth provides the Bank of Japan with more flexibility to tighten its monetary policy.

ASIAN INDICES	CLOSE	PREVIOUS	1D%	5D%	1M%	YTD%
Hang Seng	16698.36	16945.51	-1.46	-3.13	-6.19	-2.05
Nikkei 225	31458.42	35909.70	-12.40	-18.22	-23.11	-5.99
Shanghai	2860.70	2905.34	-1.54	-1.08	-3.03	-3.84

HANG SENG



NIKKEI



SHANGHAI



COMMODITIES MARKET SUMMARY

SELECTED ITEMS

Gold prices edged higher this morning from multi-week lows after U.S. central bank policymakers reassured markets and highlighted the prospect of a September interest rate cut. Oil prices climbed more than \$1, recovering from the previous day's loss as concerns about an escalating Middle East conflict potentially affecting supplies outweighed fears of a possible U.S. recession that could reduce demand in the world's largest oil consumer.

COMMODITY	LAST	CLOSE	% CHG	1D%	5D%	YTD%
Brent Crude	#N/A	77.23	#VALUE!	-0.26	-3.27	0.19
Gold	#N/A	2410.54	#VALUE!	-1.33	1.11	16.85
Palladium	#N/A	849.82	#VALUE!	-4.92	-6.33	-22.55
Platinum	#N/A	913.60	#VALUE!	-4.90	-4.08	-7.46
Silver	#N/A	27.26	#VALUE!	-4.55	-2.19	14.60

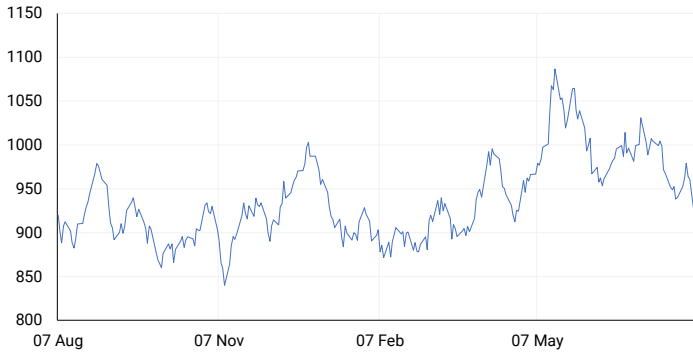
BRENT CRUDE

One-year



PLATINUM

One-year



GOLD

One-year



CURRENCY PAIR	LAST	CLOSE	% CHG	1D%	5D%	YTD%
USDZAR	#N/A	18.51	#VALUE!	1.27	0.37	1.01
GBPZAR	#N/A	23.67	#VALUE!	1.11	-0.22	1.59
EURZAR	#N/A	20.29	#VALUE!	1.72	1.65	0.48
AUDZAR	#N/A	12.03	#VALUE!	1.10	-0.39	-3.40
EURUSD	#N/A	1.10	#VALUE!	0.38	1.21	-0.78
USDJPY	#N/A	144.18	#VALUE!	-1.62	-6.40	2.22
GBPUSD	#N/A	1.28	#VALUE!	-0.21	-0.66	0.35
USDCHF	#N/A	0.85	#VALUE!	-0.63	-3.82	1.28

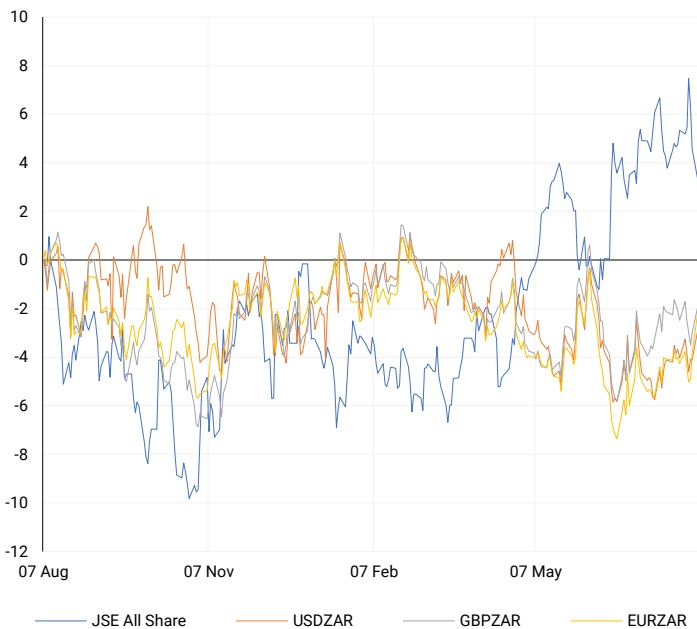
CURRENCY MARKET SUMMARY

SELECTED ITEMS

South African stocks and the rand plummeted on Monday as global investor sentiment turned negative toward riskier assets amid growing fears of a possible recession in the United States. A surge in the yen to a seven-month high contributed to a broad dollar decline, driven by last week's economic data raising the likelihood of a U.S. economic downturn and potential larger interest rate cuts from the Federal Reserve.

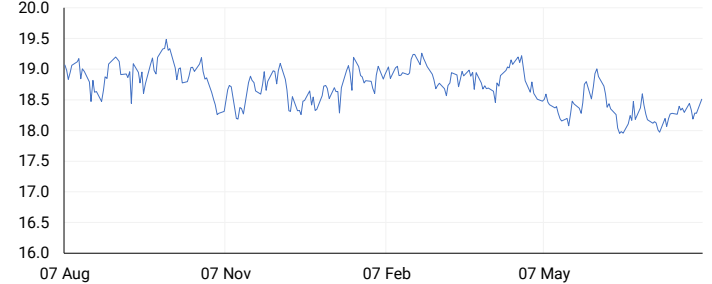
CURRENCY PAIRS vs JSE ALL SHARE

Normalised percentage performances



USDZAR

One-year



EURUSD

One-year



SOURCES | JSE, IRESS, MONEYWEB, CNBC, BBC, CNN

Disclaimer: This note is prepared for Sanlam Private Wealth (Pty) Ltd, by K2013143132 (Pty) Ltd trading as ThompsonGreen. ThompsonGreen is an independent company contracted to Sanlam Private Wealth (Pty) Ltd. The views expressed in this note are those of ThompsonGreen and/or its analysts and not necessarily the views of Sanlam Private Wealth (Pty) Ltd, Sanlam or any officer or agent thereof. K2013143132 (Pty) Ltd trading as ThompsonGreen is a research house and not a registered broker, financial adviser or financial service provider. Our editors and customer services teams also do not give personal investment advice. The information in this document is general advice only and may not be appropriate to your particular investment objectives, financial situation or particular needs. Before investing, or if you are in any doubt about your personal situation, you should seek professional advice from a stockbroker or independent financial adviser authorised by the Financial Sector Conduct Authority.