

GLOBAL OVERVIEW | SELECTED INDICES

SOUTH AFRICAN INDICES	CLOSE	PREVIOUS	1D%	5D%	1M%	YTD%
All Share	80739.31	80364.86	0.47	0.25	0.15	5.00
Top 40	73728.30	73357.30	0.51	0.38	0.20	4.59
Financial 15	19378.92	19341.73	0.19	-0.21	1.86	8.42
Industrial 25	109351.94	107978.63	1.27	1.61	1.44	5.43
Resource 10	58543.67	58947.27	-0.68	-1.14	-4.36	1.76
Mid Cap	84767.91	84662.32	0.12	-0.61	0.01	5.41
Small Cap	80418.63	80106.27	0.39	-0.04	-0.17	10.93
Banks	12218.19	12218.14	0.00	-0.74	2.64	11.60
Retailers	6713.24	6754.80	-0.62	0.29	2.03	7.70
Property (J253) - TR	2169.48	2158.10	0.53	1.95	3.91	16.41

AMERICAN INDICES	CLOSE	PREVIOUS	1D%	5D%	1M%	YTD%
Dow Jones	39497.54	39446.49	0.13	-0.60	0.52	4.80
Nasdaq	16745.30	16660.02	0.51	-0.18	-9.14	11.55
S&P 500	5344.16	5319.31	0.47	-0.04	-4.17	12.04
US VIX	20.37	23.79	-14.38	-12.91	62.83	63.61

EUROPEAN INDICES	CLOSE	PREVIOUS	1D%	5D%	1M%	YTD%
CAC 40	7269.71	7247.45	0.31	0.25	-3.18	-3.63
DAX 30	17722.88	17680.40	0.24	0.35	-2.81	5.80
Eurostoxx 50	4674.55	4659.00	0.33	0.82	-4.57	3.38
FTSE	8168.10	8144.97	0.28	-0.08	0.35	5.62

ASIAN INDICES	CLOSE	PREVIOUS	1D%	5D%	1M%	YTD%
Hang Seng	17090.23	16891.83	1.17	0.85	-2.47	0.25
Nikkei 225	35025.00	34831.15	0.56	-2.46	-15.77	4.66
Shanghai	2862.19	2869.90	-0.27	-1.48	-3.28	-3.79

EARLY MORNING MARKETS	LAST	CLOSE	% CHG	1D%	5D%	YTD%
TENCENT	374.60	370.00	1.24	0.49	3.29	27.50
BHP AUS	4068.00	4086.00	-0.44	1.62	-2.67	-18.94

NOTE: 5D% and 1M% are rolling percentage moves

INTERNATIONAL ECONOMIC CALENDAR | SELECTED EVENTS

TIME	AREA	TODAY'S EVENTS & RELEASES	PERIOD	EXP.	PREV.
---	CN	New Yuan Loans	Jul	---	---
---	---	---	---	---	---
---	---	---	---	---	---
---	---	---	---	---	---
---	---	---	---	---	---

TIME	AREA	PREVIOUS SESSION'S RELEASES	PERIOD	EXP.	ACT.
3:30	CN	Inflation Rate y/y	Jul	0.20%	0.50%
3:30	CN	PPI y/y	Jul	-1.00%	-0.80%
---	---	---	---	---	---
---	---	---	---	---	---
---	---	---	---	---	---

JSE ALL SHARE | BEST AND WORST ONE-DAY PERFORMERS

BEST ONE-DAY % PERFORMERS	CODE	CLOSE	1D%	5D%	YTD%
MTN Group Ltd	MTN	8306	10.45	10.54	-28.09
Quilter Plc	QLT	3261	4.86	6.57	34.31
Fairvest Limited B	FTB	419	4.23	1.21	21.80
PPC Limited	PPC	397	3.66	5.03	-0.50
African Rainbow Cap Inv	AIL	663	3.59	-3.49	35.58
Telkom SA SOC Ltd	TKG	2405	3.57	3.75	-19.13

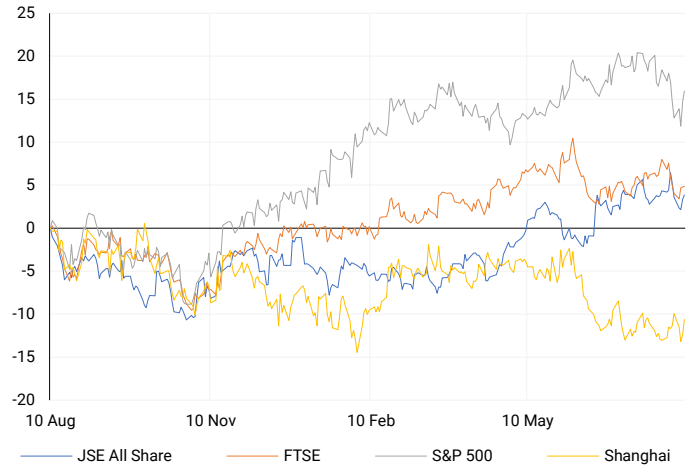
WORST ONE-DAY % PERFORMERS	CODE	CLOSE	1D%	5D%	YTD%
Cashbuild Ltd	CSB	14800	-6.03	-10.30	-11.34
Bytes Technology Grp PLC	BYI	10822	-4.86	-3.38	-24.43
Gold Fields Ltd	GFI	29083	-3.60	-4.07	4.70
Barloworld Ltd	BAW	9347	-3.58	2.73	18.32
Sibanye Stillwater Ltd	SSW	1790	-2.29	-8.02	-28.11

DIVIDEND DATA

COMPANY	CODE	EXPECTED DIVIDEND	COMPANY	CODE	EXPECTED DIVIDEND
---	---	---	---	---	---
---	---	---	---	---	---
---	---	---	---	---	---
---	---	---	---	---	---
---	---	---	---	---	---

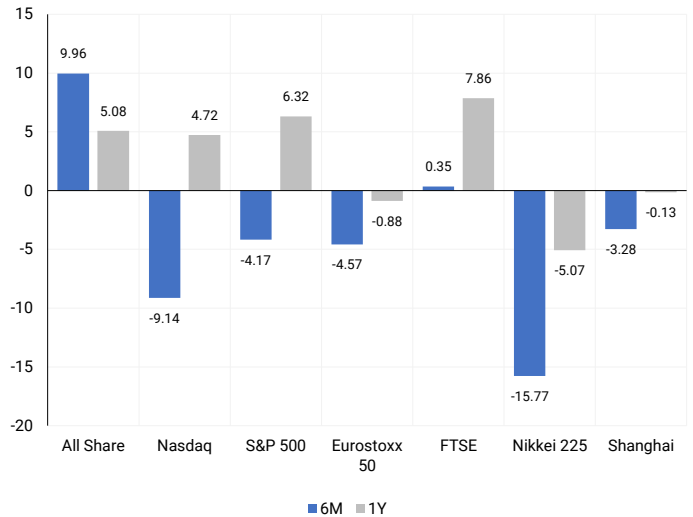
INTERNATIONAL INDICES

Normalised percentage performances - In rand terms



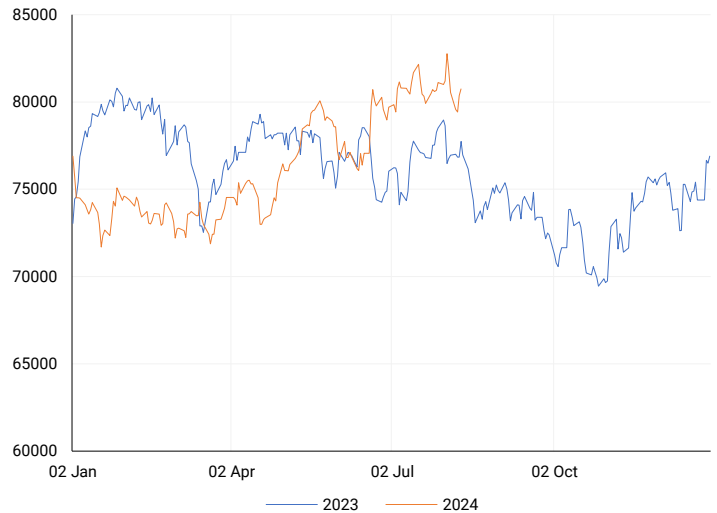
INTERNATIONAL INDICES

6-month & 1-year percentage performances



JSE ALL SHARE INDEX

2023 v 2024 to date



LOCAL EQUITIES | JSE LARGE CAP COMPANIES (Cents Per Share)

COMPANY	CLOSE	PREVIOUS	1D%	5D%	1M%	YTD%
Absa Group Limited	15153	15059	0.62	-1.71	-2.98	-7.44
Anglo American plc	51891	51580	0.60	-0.57	-6.34	9.59
Anglo American Plat Ltd	61694	61779	-0.14	-5.84	-4.28	-36.00
Anglogold Ashanti Ltd	53226	51575	3.20	5.86	4.02	50.61
Anheuser-Busch InBev SA NV	111450	112322	-0.78	-3.33	3.39	-7.14
BHP Group Limited	48880	48960	-0.16	0.11	-7.51	-22.83
BID Corporation Ltd	42700	43164	-1.07	-2.38	0.43	0.08
British American Tob plc	65453	64900	0.85	0.35	13.76	20.87
Compagnie Fin Richemont	266633	267118	-0.18	-1.25	-4.18	3.84
Capitec Bank Hldgs Ltd	276700	280000	-1.18	-1.71	5.01	36.55
Discovery Ltd	14054	13900	1.11	1.11	1.33	-2.19
Firststrand Ltd	7975	7894	1.03	-0.28	2.61	8.49
Gold Fields Ltd	29083	30170	-3.60	-4.07	1.88	4.70
Glencore plc	9400	9476	-0.80	-0.19	-14.90	-15.81
Impala Platinum Hlgs Ltd	8250	8336	-1.03	-6.36	-12.85	-9.61
Kumba Iron Ore Ltd	38553	38858	-0.78	0.96	-16.30	-37.29
Mondi plc	33705	34102	-1.16	-0.63	-4.70	-7.15
MTN Group Ltd	8306	7520	10.45	10.54	1.12	-28.09
Naspers Ltd -N-	358840	350444	2.40	5.09	1.62	14.72
Prosus N.V.	64440	63860	0.91	3.52	-0.09	14.99
South32 Limited	3452	3448	0.12	-3.03	-23.70	-18.18
Standard Bank Group Ltd	21667	21790	-0.56	-0.83	2.15	4.12
Shoprite Holdings Ltd	28988	28950	0.13	-1.73	0.48	5.39
Sanlam Limited	7923	7919	0.05	1.01	-3.54	8.83
Sasol Limited	13023	13284	-1.96	-2.80	-8.67	-29.72
Sibanye Stillwater Ltd	1790	1832	-2.29	-8.02	-16.28	-28.11
Vodacom Group Ltd	9985	9914	0.72	1.63	3.45	-5.80

SOUTH AFRICAN MARKET SUMMARY

SELECTED ITEMS

South African markets were closed on Friday due to a public holiday.

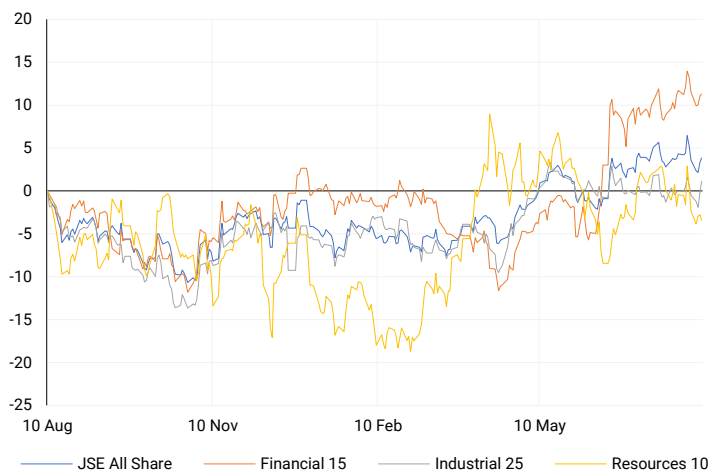
JSE ALL SHARE

One-year



LOCAL INDICES

Normalised percentage performances



LOCAL SENS ANNOUNCEMENTS

SELECTED RELEASE

QUILTER PLC – Half Year Results

Quilter's performance in the first half of 2024 showed strong growth compared to the same period in 2023. The company's assets under management and administration (AuMA) increased by 13% to £110.6 billion, with gross flows rising by 35% and net inflows surging by 164%. Reported AuMA also grew by 12%, and net inflows saw a significant increase of 669%. Profit before tax attributable to shareholders more than doubled, rising by 157%, while adjusted profit before tax grew by 28%. The operating margin improved by 5 percentage points to 29%, and the interim dividend per share increased by 13%. Basic earnings per share also saw a notable rise of 150%.

QLT | 4.86% OPEN | 3089c HIGH | 3261c LOW | 3050c CLOSE | 3261c TIME | 08:00

SOUTH OCEAN HOLDINGS LIMITED – Unaudited Summarised Results

As of 30 June 2024, the company's revenue increased by 5.7% to R1.31 billion compared to the same period in 2023. Operating profit showed a slight growth of 1.6%, reaching R68.1 million. However, earnings per share and headline earnings per share both declined by 10% to 21.50 cents. The company did not declare a dividend for this period, but the tangible net asset value rose by 9.7% to R340.4 million.

SOH | 3.52% OPEN | 265c HIGH | 265c LOW | 256c CLOSE | 265c TIME | 13:25

EXPECTED COMPANY REPORTING SCHEDULE

COMPANY	CODE	RELEASE	DATE
Eastern Platinum	EPS	Interim	12 Aug '24
Trencor	TRE	Interim	13 Aug '24
Absa	ABSP	Interim	14 Aug '24
Standard Bank	SBK	Interim	15 Aug '24
Thungela	TGA	Interim	21 Aug '24

BANK AND OTHER SELECTE PREFERENCE SHARES

COMPANY	CODE	CLOSE	CLEAN YIELD	NEXT LDT (Est.)
Investec Limited	INPR	8990	11.24	Thu, 06 Jun '24
Standard Bank	SBPP	8950	11.15	Thu, 05 Sep '24
Absa	ABSP	79410	11.48	Thu, 12 Sep '24
Capitec	CPIP	10000	9.69	Thu, 19 Sep '24
Steinhoff	SHFF	9734	10.47	Thu, 17 Oct '24
Grindrod	GNDP	9167	12.22	Thu, 19 Sep '24
Netcare	NTCP	8345	11.82	Thu, 31 Oct '24
Discovery	DSBP	9610	11.91	Thu, 19 Sep '24
Invicta	IVTP VTP is invalid.		13.41	Thu, 27 Jun '24

LOCAL EQUITIES | JSE MID CAP COMPANIES (Cents Per Share)

COMPANY	CODE	CLOSE	PREVIOUS	1D%	1M%	YTD%
Aspen Pharmacare Hldgs Ltd	APN	23308	23146	0.70	-1.00	14.54
African Rainbow Min Ltd	ARI	19590	20001	-2.05	-14.35	-2.05
AVI Ltd	AVI	9832	9652	1.86	2.43	19.80
Barloworld Ltd	BAW	9347	9694	-3.58	4.18	18.32
Bidvest Ltd	BVT	26741	26450	1.10	-6.17	5.99
Bytes Technology Grp PLC	BYI	10822	11375	-4.86	-12.68	-24.43
Capital&Counties Prop plc	CCO	3354	3387	-0.97	0.72	3.20
Clicks Group Ltd	CLS	35231	35201	0.09	4.67	8.17
Dis-Chem Pharmacies Ltd	DCP	3587	3600	-0.36	5.66	16.88
Exxaro Resources Ltd	EXX	18414	18825	-2.18	-4.39	-9.95
Fortress Real Est INV B	FFB	1732	1723	0.52	5.48	20.61
Growthpoint Prop Ltd	GRT	1300	1301	-0.08	6.30	11.30
Harmony GM Co Ltd	HAR	17461	17363	0.56	-1.13	46.01
Hammerson plc	HMN	633	640	-1.09	-6.36	-6.91
Investec Ltd	INL	13450	13417	0.25	-1.85	7.09
Investec plc	INP	13374	13455	-0.60	-2.64	6.18
Italtile Ltd	ITE	1139	1140	-0.09	-4.29	1.70
Life Healthc Grp Hldgs Ltd	LHC	1297	1287	0.78	2.94	-29.40
MultiChoice Group Ltd	MCG	10750	10810	-0.56	2.58	32.68
Montauk Renewables Inc	MKR	10000	10000	0.00	2.52	-41.86
Mr Price Group Ltd	MRP	21800	21620	0.83	9.26	39.02
Momentum Met Hldgs Ltd	MTM	2640	2608	1.23	13.55	20.60
Ninety One Plc	N91	3854	3852	0.05	-3.36	-10.62
Nedbank Group Ltd	NED	27972	28016	-0.16	9.34	29.36
Northam Platinum Hldgs Ltd	NPH	12725	12852	-0.99	0.02	-9.39
NEPI Rockcastle N.V.	NRP	13890	13833	0.41	6.12	9.91
Netcare Limited	NTC	1270	1264	0.47	1.68	-10.81
Ninety One Limited	NY1	3801	3790	0.29	-3.63	-11.54
Old Mutual Limited	OMU	1193	1185	0.68	-4.86	-8.65
OUTsurance Group Ltd	OUT	4686	4650	0.77	-0.83	11.04
Pick n Pay Stores Ltd	PIK	2279	2219	2.70	0.05	-2.06
Pepkor Holdings Ltd	PPH	1972	1989	-0.85	1.75	0.46
Quilter Plc	QLT	3261	3110	4.86	18.24	34.31
Redefine Properties Ltd	RDF	437	430	1.63	3.07	13.51
Remgro Ltd	REM	13391	13305	0.65	-3.27	-17.58
Resilient REIT Limited	RES	5114	5123	-0.18	1.19	15.47
Reinet Investments S.C.A	RNI	47416	46799	1.32	4.30	1.71
Sappi Ltd	SAP	4625	4703	-1.66	-11.77	4.64
Santam Limited	SNT	32670	32300	1.15	-0.90	14.00
The Spar Group Ltd	SPP	12169	12215	-0.38	2.69	3.21
Sirius Real Estate Ltd	SRE	2209	2190	0.87	0.18	-0.27
Tiger Brands Ltd	TBS	22178	21809	1.69	4.61	10.18
Transaction Capital Ltd	TCP	291	283	2.83	0.34	-63.53
The Foschini Group Limited	TFG	13096	13349	-1.90	0.68	18.02
Thungela Resources Ltd	TGA	12400	12400	0.00	9.00	-19.38
Telkom SA SOC Ltd	TKG	2405	2322	3.57	0.80	-19.13
Truworths Int Ltd	TRU	8985	9040	-0.61	-2.31	20.85
Woolworths Holdings Ltd	WHL	6082	6137	-0.90	0.21	-15.76
Zeda Limited	ZZD	1185	1195	-0.84	-6.69	-7.06

LOCAL EQUITIES | JSE SMALL CAP COMPANIES (Cents Per Share)

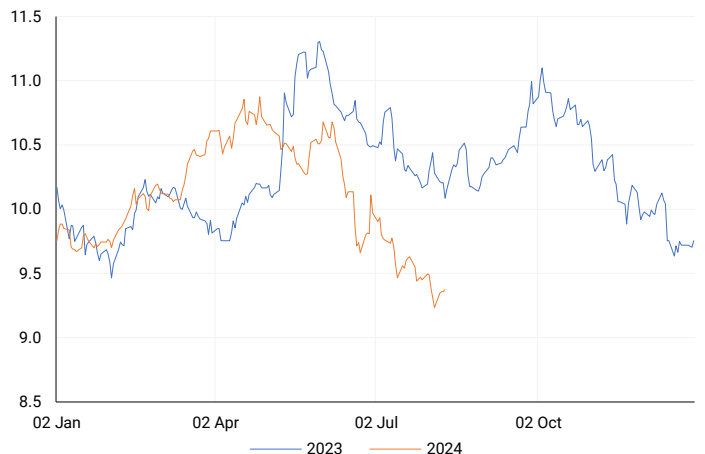
COMPANY	CODE	CLOSE	PREVIOUS	1D%	1M%	YTD%
ArcelorMittal SA Limited	ACL	130	130	0.00	0.78	-20.73
ADVTECH Ltd	ADH	2936	2894	1.45	-1.97	19.64
Altron Limited A	AEL	1565	1590	-1.57	5.03	52.68
AECI Limited	AFE	10350	10483	-1.27	-3.98	-5.64
Alexander Forbes Grp Hldgs	AFH	667	664	0.45	-8.76	1.06
Afrimat Limited	AFT	6414	6520	-1.63	-12.22	1.81
African Rainbow Cap Inv	AIL	663	640	3.59	0.61	35.58
Adcock Ingram Hldgs Ltd	AIP	5705	5600	1.88	-4.12	-5.07
Astral Foods Ltd	ARL	16849	16791	0.35	-1.96	14.96
Attacq Limited	ATT	1125	1107	1.63	3.78	22.02
Brait PLC	BAT	88	86	2.33	15.39	-51.65
Blue Label Telecoms Ltd	BLU	425	428	-0.70	0.24	9.54
Burstone Group	BTN	789	778	1.41	10.20	-1.38
Coronation Fund Mngrs Ld	CML	3684	3670	0.38	-1.37	18.23
Curro Holdings Limited	COH	1200	1187	1.10	1.27	3.00
Cashbuild Ltd	CSB	14800	15750	-6.03	-12.83	-11.34
DRD Gold Ltd	DRD	1680	1698	-1.06	-1.93	6.53
Datatec Ltd	DTC	3521	3513	0.23	-7.32	-13.06
Emira Property Fund Ltd	EMI	1106	1100	0.55	-1.07	29.36
Equites Prop Fund Ltd	EQU	1328	1312	1.22	-2.50	-4.80
Famous Brands Ltd	FBR	5555	5511	0.80	3.21	-4.11
Fairvest Limited B	FTB	419	402	4.23	6.08	21.80
Grindrod Ltd	GND	1553	1550	0.19	-1.77	35.51
Hosken Cons Inv Ltd	HCI	18315	18173	0.78	1.99	-9.60
Hudaco Industries Ltd	HDC	18190	17694	2.80	1.34	13.24
Hyprop Inv Ltd	HYP	3309	3332	-0.69	1.16	6.36
JSE Ltd	JSE	10550	10447	0.99	-0.94	14.13
KAP Industrial Hldgs Ltd	KAP	289	290	-0.34	1.40	10.31
Karooooo Ltd	KRO	66001	65000	1.54	10.55	38.95
PSG Konsult Limited	KST	1630	1610	1.24	-8.12	6.19
Libstar Holdings Ltd	LBR	410	390	5.13	8.47	17.14
Lighthouse Properties plc	LTE	821	816	0.61	2.63	11.70
Industrials REIT Limited	MLI	1.7	1.9	-10.53	240.00	142.86
MAS P.L.C	MSP	1751	1785	-1.90	-2.23	1.16
Metair Investments Ltd	MTA	1293	1300	-0.54	11.66	-27.15
Motus Holdings Ltd	MTH	10380	10310	0.68	5.15	2.27
Murray & Roberts Hldgs	MUR	310	313	-0.96	35.96	108.05
Oceana Group Ltd	OCE	7039	6875	2.39	-1.54	-0.40
Omnia Holdings Ltd	OMN	6490	6499	-0.14	-6.67	-0.72
Pan African Resource plc	PAN	650	650	0.00	3.17	58.92
PPC Limited	PPC	397	383	3.66	5.59	-0.50
Raubex Group Ltd	RBX	4265	4350	-1.95	-8.28	53.86
RFG Holdings Limited	RFG	1515	1505	0.66	1.47	12.22
Reunert Ltd	RLO	7185	7195	-0.14	-0.75	19.87
SA Corp Real Estate Ltd	SAC	268	266	0.75	-0.37	15.52
Super Group Ltd	SPG	2954	2970	-0.54	0.75	-0.71
Stor-Age Prop REIT Ltd	SSS	1335	1345	-0.74	0.00	2.22
Southern Sun LTD	SSU	616	610	0.98	8.64	17.33
Sun International Ltd	SUI	3852	3805	1.24	2.23	-6.05
Tharisa plc	THA	1876	1878	-0.11	-6.11	24.16
Tsogo Sun Gaming Ltd	TSG	1123	1094	2.65	-2.26	-8.33
Vukile Property Fund Ltd	VKE	1680	1659	1.27	3.58	18.98
Wilson Bayly Hlm-Ovc Ltd	WBO	18134	17688	2.52	3.62	39.43

10-YEAR BOND YIELD | SELECTED ITEMS (Basis Point Change)

REGION	YIELD	1D	1M	1Y
United States	3.94%	-5	-27	--
United Kingdom	3.94%	-3	-13	-58
Germany	2.22%	-4	-24	-40
Japan	0.83%	0	-24	26
South African 10Y	9.39%	1	-64	-73

SOUTH AFRICAN 10-YEAR

2023 vs 2024 to date

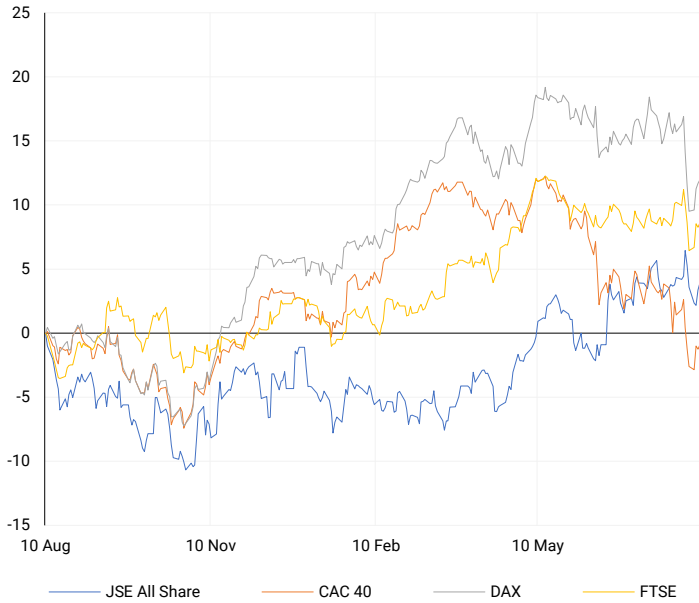


GLOBAL INTEREST RATES | SELECTED ITEMS

REGION	DATE CHANGED	CURRENT RATE
United States	Wed, 26 Jul '23	5.25%-5.50%
United Kingdom	Thu, 03 Aug '23	5.25%
European	Thu, 27 Jul '23	4.25%
SA Repo Rate	Thu, 25 May '23	8.25%
SA Prime Rate	Thu, 25 May '23	11.75%

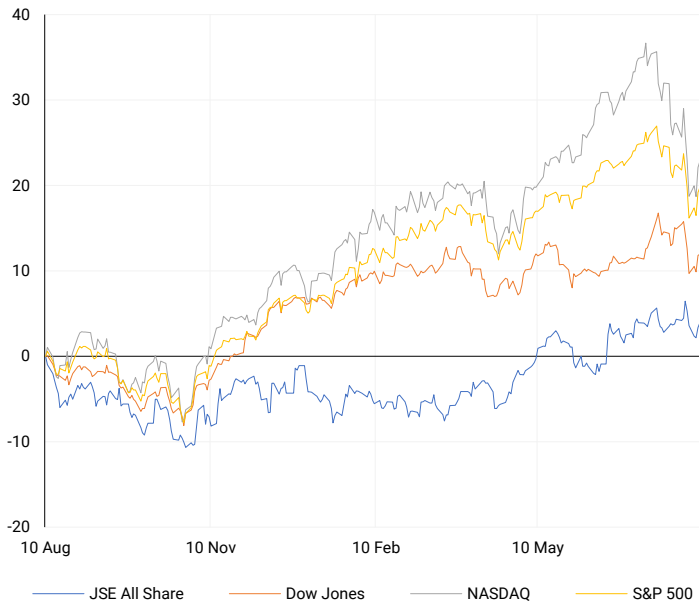
EUROPEAN INDICES

Normalised percentage performances



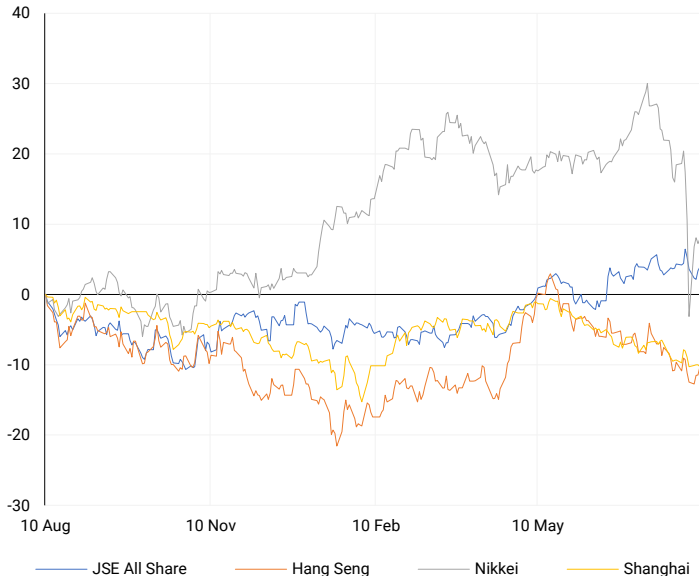
AMERICAN INDICES

Normalised percentage performances



ASIAN INDICES

Normalised percentage performances



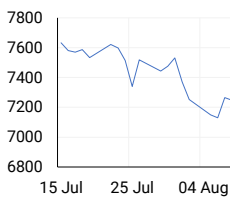
EUROPEAN MARKET SUMMARY

SELECTED ITEMS

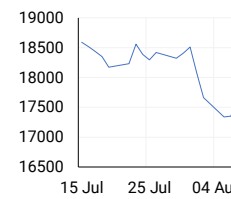
Europe's main index rose on Friday, marking its fourth consecutive session of gains, driven primarily by strength in healthcare stocks. Despite a turbulent week, the index managed to post a small overall gain. On the economic front, German inflation in July increased to 2.6%, as expected, while Italian consumer prices (HICP) dropped by 0.9% from the previous month. The healthcare sector was a top performer, with Nordisk, Europe's largest company by market value, surging 6.3% for its second straight day of gains following a disappointing profit outlook earlier in the week.

EUROPEAN INDICES	CLOSE	PREVIOUS	1D%	5D%	1M%	YTD%
CAC 40	7269.71	7247.45	0.31	0.25	-3.18	-3.63
DAX 30	17722.88	17680.40	0.24	0.35	-2.81	5.80
Eurostoxx 50	4674.55	4659.00	0.33	0.82	-4.57	3.38
FTSE	8168.10	8144.97	0.28	-0.08	0.35	5.62

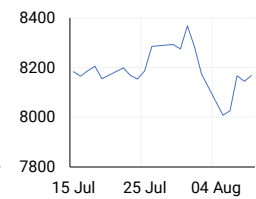
CAC 40



DAX



FTSE



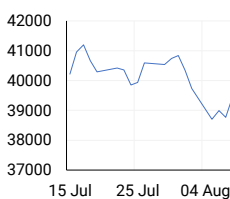
AMERICAN MARKET SUMMARY

SELECTED ITEMS

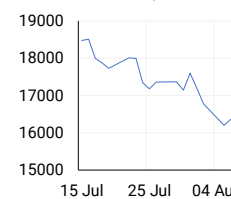
The S&P 500 closed higher on Friday, nearly recovering all its losses from a sharp drop earlier in the week caused by recession fears and the unwinding of a global yen-funded carry trade. Despite these fluctuations, the index was relatively flat for the week. On Thursday, Federal Reserve policymakers indicated that inflation is cooling enough to potentially allow for upcoming rate cuts, with the size and timing depending on future economic data. The Fed is expected to cut rates at its next meeting on September 17-18, but whether the cut will be 25 or 50 basis points remains uncertain.

AMERICAN INDICES	CLOSE	PREVIOUS	1D%	5D%	1M%	YTD%
Dow Jones	39497.54	39446.49	0.13	-0.60	0.52	4.80
Nasdaq	16745.30	16660.02	0.51	-0.18	-9.14	11.55
S&P 500	5344.16	5319.31	0.47	-0.04	-4.17	12.04
US VIX	20.37	23.79	-14.38	-12.91	62.83	63.61

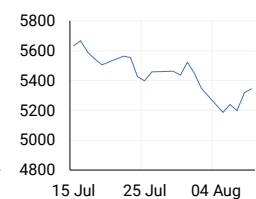
DOW JONES



NASDAQ



S&P 500



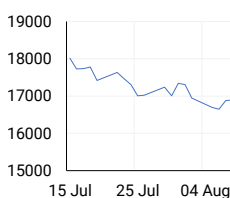
ASIAN MARKET SUMMARY

SELECTED ITEMS

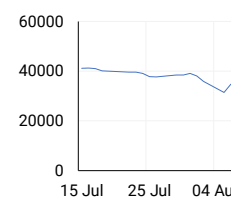
Asia-Pacific markets were mostly higher this morning after a volatile week marked by steep sell-offs and a strong recovery, particularly in Japanese stocks. Traders in Asia are focusing on India's upcoming inflation and industrial output data. Economists expect India's year-on-year CPI inflation to drop significantly to 3.65% in July, down from 5.08% in June, while industrial output for June is projected to slightly decrease to 5.5% from 5.9% in May. Additionally, China is set to release retail sales and industrial production figures on Thursday, which are expected to highlight the ongoing economic slowdown, emphasizing the need for further stimulus measures.

ASIAN INDICES	CLOSE	PREVIOUS	1D%	5D%	1M%	YTD%
Hang Seng	17090.23	16891.83	1.17	0.85	-2.47	0.25
Nikkei 225	35025.00	34831.15	0.56	-2.46	-15.77	4.66
Shanghai	2862.19	2869.90	-0.27	-1.48	-3.28	-3.79

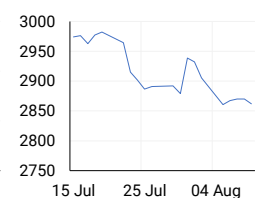
HANG SENG



NIKKEI



SHANGHAI



COMMODITIES MARKET SUMMARY

SELECTED ITEMS

Gold prices remained steady this morning as investors awaited key U.S. inflation data later in the week, which will help determine the size of the Federal Reserve's expected interest rate cut next month. Meanwhile, oil prices were largely unchanged in early Asian trading, maintaining most of last week's over 3% gains, driven by geopolitical tensions and improved economic data.

COMMODITY	LAST	CLOSE	% CHG	1D%	5D%	YTD%
Brent Crude	79.88	79.70	0.23	0.85	2.93	3.40
Gold	2432.14	2431.21	0.04	0.16	-0.48	17.85
Palladium	911.25	908.02	0.36	-1.97	1.60	-17.25
Platinum	927.55	925.31	0.24	-1.30	-3.68	-6.27
Silver	27.53	27.47	0.22	-0.22	-3.82	15.48

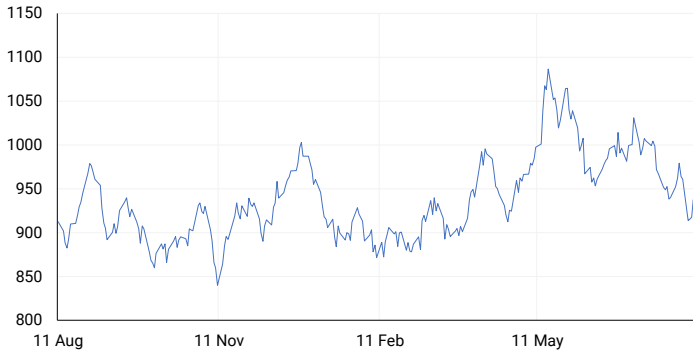
BRENT CRUDE

One-year



PLATINUM

One-year



GOLD

One-year



CURRENCY PAIR	LAST	CLOSE	% CHG	1D%	5D%	YTD%
USDZAR	18.31	18.46	-0.85	0.57	1.01	0.75
GBPZAR	23.37	23.38	-0.06	-0.23	-0.10	0.38
EURZAR	19.99	20.01	-0.09	-0.18	0.32	-0.91
AUDZAR	12.04	12.04	0.00	-0.49	1.18	-3.32
EURUSD	1.09	1.09	0.03	-0.02	0.05	-1.10
USDJPY	147.17	146.61	0.38	-0.42	0.04	3.95
GBPUSD	1.28	1.28	0.05	0.11	-0.34	0.22
USDCHF	0.87	0.87	0.23	-0.16	0.89	2.82

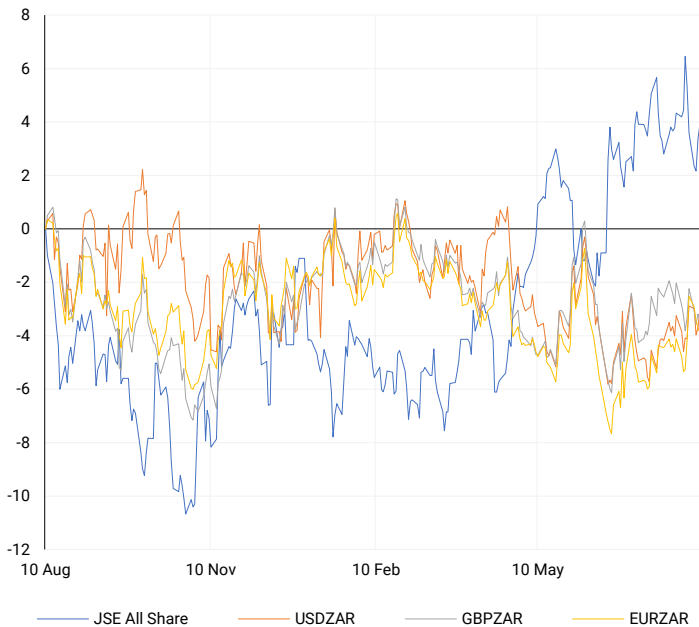
CURRENCY MARKET SUMMARY

SELECTED ITEMS

South Africa's rand strengthened on Thursday following U.S. data showing a drop in jobless claims, which eased concerns about a hard landing in the world's largest economy. The dollar eased from a one-week high against other major currencies on Friday, ending a volatile week as traders reacted to a decline in U.S. jobless claims and concerns about a potential economic downturn.

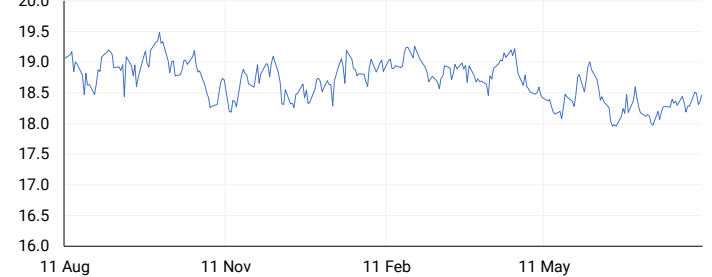
CURRENCY PAIRS vs JSE ALL SHARE

Normalised percentage performances



USDZAR

One-year



EURUSD

One-year



SOURCES | JSE, IRESS, MONEYWEB, CNBC, BBC, CNN

Disclaimer: This note is prepared for Sanlam Private Wealth (Pty) Ltd, by K2013143132 (Pty) Ltd trading as ThompsonGreen. ThompsonGreen is an independent company contracted to Sanlam Private Wealth (Pty) Ltd. The views expressed in this note are those of ThompsonGreen and/or its analysts and not necessarily the views of Sanlam Private Wealth (Pty) Ltd, Sanlam or any officer or agent thereof. K2013143132 (Pty) Ltd trading as ThompsonGreen is a research house and not a registered broker, financial adviser or financial service provider. Our editors and customer services teams also do not give personal investment advice. The information in this document is general advice only and may not be appropriate to your particular investment objectives, financial situation or particular needs. Before investing, or if you are in any doubt about your personal situation, you should seek professional advice from a stockbroker or independent financial adviser authorised by the Financial Sector Conduct Authority.