

GLOBAL OVERVIEW | SELECTED INDICES

SOUTH AFRICAN INDICES						
	CLOSE	PREVIOUS	1D%	5D%	1M%	YTD%
All Share	81402.32	80956.22	0.55	1.29	-0.35	5.86
Top 40	74395.23	74033.09	0.49	1.41	-0.41	5.53
Financial 15	19739.60	19460.64	1.43	2.06	2.66	10.44
Industrial 25	110331.17	110132.90	0.18	2.18	0.24	6.38
Resource 10	58207.86	58163.66	0.08	-1.25	-5.94	1.17
Mid Cap	85528.15	84720.60	0.95	1.02	0.40	6.36
Small Cap	80568.00	80113.01	0.57	0.58	0.45	11.14
Banks	12453.70	12289.47	1.34	1.93	2.96	13.75
Retailers	6812.74	6652.72	2.41	0.86	2.02	9.29
Property (J253) - TR	2181.42	2164.34	0.79	1.08	3.91	17.05

AMERICAN INDICES						
	CLOSE	PREVIOUS	1D%	5D%	1M%	YTD%
Dow Jones	40008.39	39765.64	0.61	3.21	0.02	6.15
Nasdaq	17192.60	17187.61	0.03	6.15	-6.55	14.53
S&P 500	5455.21	5434.43	0.38	4.92	-2.85	14.37
US VIX	16.19	18.12	-10.65	-41.87	29.94	30.04

EUROPEAN INDICES						
	CLOSE	PREVIOUS	1D%	5D%	1M%	YTD%
CAC 40	7333.36	7275.87	0.79	0.93	-5.06	-2.78
DAX 30	17885.60	17812.05	0.41	1.54	-4.60	6.77
Eurostoxx 50	4720.40	4691.80	0.61	1.09	-6.43	4.40
FTSE	8281.05	8235.23	0.56	1.40	0.34	7.08

ASIAN INDICES						
	CLOSE	PREVIOUS	1D%	5D%	1M%	YTD%
Hang Seng	17113.36	17174.06	-0.35	1.40	-6.45	0.39
Nikkei 225	36442.43	36232.51	0.58	3.86	-11.53	8.90
Shanghai	2850.65	2867.95	-0.60	-0.67	-4.06	-4.18

EARLY MORNING MARKETS						
	LAST	CLOSE	% CHG	1D%	5D%	YTD%
TENCENT	372.00	373.80	-0.48	-1.27	2.86	28.81
BHP AUS	3916.00	3962.00	-1.16	-2.77	-3.41	-21.40

NOTE : 5D% and 1M% are rolling percentage moves

INTERNATIONAL ECONOMIC CALENDAR | SELECTED EVENTS

TIME	AREA	TODAY'S EVENTS & RELEASES	PERIOD	EXP.	PREV.
8:00	GB	GDP m/m	Jun	0.00%	0.40%
13:00	ZA	Building Permits y/y	Jun	-20.0%	-14.6%
14:30	US	Retail Sales m/m	Jul	0.2%	0.0%
14:30	US	Unemployment Claims	Aug	239.0K	233.0K
---	---	---	---	---	---

TIME	AREA	PREVIOUS SESSION'S RELEASES	PERIOD	EXP.	ACT.
8:00	GB	Inflation Rate y/y	Jul	2.50%	2.20%
13:00	ZA	Retail Sales y/y	Jun	0.40%	4.10%
14:30	US	Core Inflation Rate y/y	Jul	3.30%	3.20%
14:30	US	Inflation Rate y/y	Jul	3.00%	2.90%
---	ZA	SACCI Business Confidence	Jun	108.20	109.00

JSE ALL SHARE | BEST AND WORST ONE-DAY PERFORMERS

BEST ONE-DAY % PERFORMERS						
	CODE	CLOSE	1D%	5D%	YTD%	
Altron Limited A	AEL	1745	6.53	9.75	70.24	
Tsogo Sun Limited	TSG	1180	4.89	7.86	-3.67	
Italtile Ltd	ITE	1185	4.41	3.95	5.80	
Gold Fields Ltd	GFI	28580	3.87	-5.27	2.89	
Remgro Ltd	REM	13750	3.77	3.34	-15.37	
Transaction Capital Ltd	TCP	283	3.66	0.00	-64.54	

WORST ONE-DAY % PERFORMERS						
	CODE	CLOSE	1D%	5D%	YTD%	
Omnia Holdings Ltd	OMN	6029	-8.58	-7.23	-7.77	
Kumba Iron Ore Ltd	KIO	36482	-6.01	-6.11	-40.66	
Anglo American plc	AGL	50121	-2.86	-2.83	5.85	
Northam Platinum Hldgs Ltd	NPH	12458	-2.76	-3.07	-11.29	
Southern Sun LTD	SSU	610	-2.56	0.00	16.19	

DIVIDEND DATA

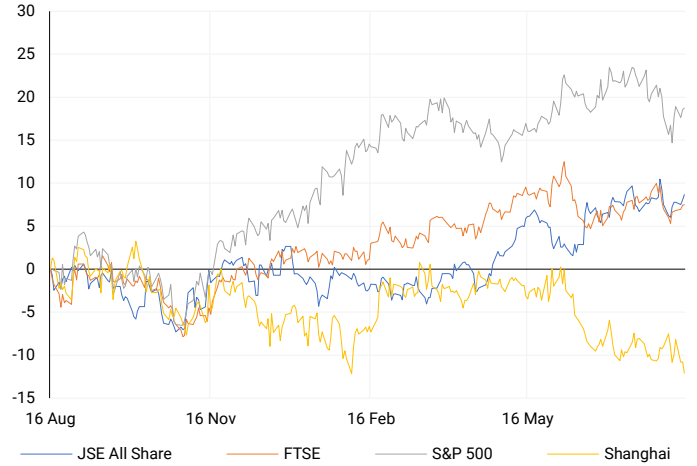
COMPANY	CODE	EXPECTED DIVIDEND	COMPANY	CODE	EXPECTED DIVIDEND
---	---	---	---	---	---
---	---	---	---	---	---
---	---	---	---	---	---
---	---	---	---	---	---
---	---	---	---	---	---

SOURCES | JSE, IRESS, MONEYWEB, CNBC, BBC, CNN

PLEASE SEE THE BOTTOM OF THE LAST PAGE FOR THE FULL DISCLAIMER

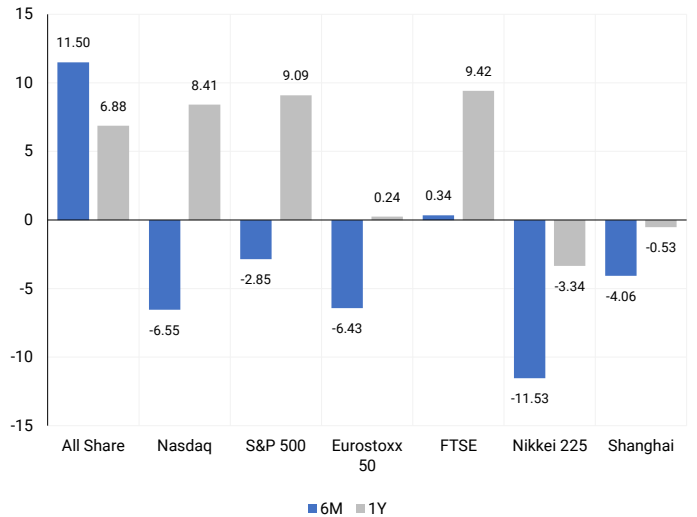
INTERNATIONAL INDICES

Normalised percentage performances - In rand terms



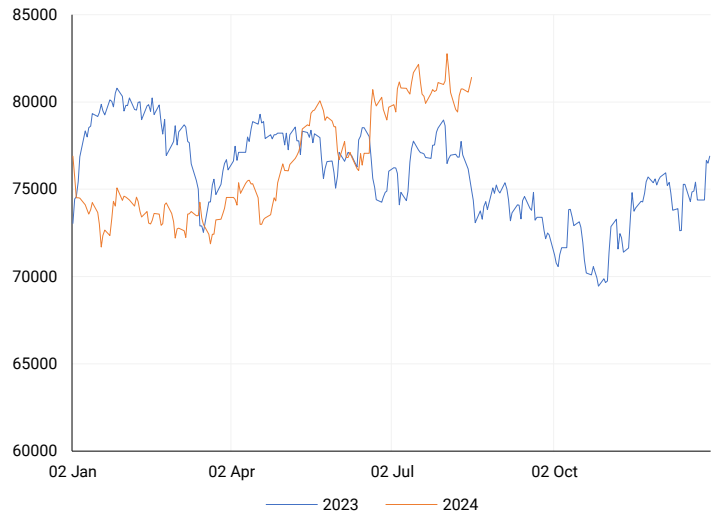
INTERNATIONAL INDICES

6-month & 1-year percentage performances



JSE ALL SHARE INDEX

2023 v 2024 to date



## LOCAL EQUITIES | JSE LARGE CAP COMPANIES (Cents Per Share)

COMPANY	CLOSE	PREVIOUS	1D%	5D%	1M%	YTD%
Absa Group Limited	15317	15195	0.80	1.71	-1.74	-6.44
Anglo American plc	50121	51599	-2.86	-2.83	-11.03	5.85
Anglo American Plat Ltd	63034	61802	1.99	2.03	0.69	-34.61
Anglogold Ashanti Ltd	55326	55119	0.38	7.27	5.86	56.55
Anheuser-Busch InBev SA NV	109511	108853	0.60	-2.50	-1.29	-8.75
BHP Group Limited	47203	48376	-2.42	-3.59	-11.77	-25.48
BID Corporation Ltd	43822	42865	2.23	1.52	4.11	2.71
British American Tob plc	65014	65241	-0.35	0.18	11.32	20.06
Compagnie Fin Richemont	271476	269557	0.71	1.63	-5.33	5.73
Capitec Bank Hldgs Ltd	283380	277125	2.26	1.21	3.72	39.85
Discovery Ltd	14596	14200	2.79	5.01	5.14	1.59
Firststrand Ltd	8171	8026	1.81	3.51	3.26	11.15
Gold Fields Ltd	28580	27516	3.87	-5.27	-2.19	2.89
Glencore plc	9347	9401	-0.57	-1.36	-16.47	-16.28
Impala Platinum Hlgs Ltd	8190	8208	-0.22	-1.75	-14.15	-10.27
Kumba Iron Ore Ltd	36482	38816	-6.01	-6.11	-19.85	-40.66
Mondi plc	33534	33150	1.16	-1.67	-9.42	-7.62
MTN Group Ltd	8497	8333	1.97	12.99	3.69	-26.43
Naspers Ltd -N-	361409	369317	-2.14	3.13	-1.61	15.54
Prosus N.V.	64650	66270	-2.44	1.24	-4.14	15.37
South32 Limited	3483	3565	-2.30	1.02	-21.96	-17.44
Standard Bank Group Ltd	21907	21700	0.95	0.54	2.85	5.27
Shoprite Holdings Ltd	30125	29209	3.14	4.06	3.62	9.53
Sanlam Limited	8200	8041	1.98	3.55	0.00	12.64
Sasol Limited	13048	12825	1.74	-1.78	-4.52	-29.58
Sibanye Stillwater Ltd	1794	1807	-0.72	-2.07	-15.54	-27.95
Vodacom Group Ltd	9930	9879	0.52	0.16	1.22	-6.32

## SOUTH AFRICAN MARKET SUMMARY

### SELECTED ITEMS

The Top-40 index on the stock market closed up by about 0.5%. In South Africa, the Business Confidence Index rose slightly to 109.1 in July, up from 109.0 in June and 107.8 in May, according to the South African Chamber of Commerce and Industry. Retail sales also saw a significant increase, rising by 4.1% year on year in June, following a revised 1.1% rise in May, as reported by Statistics South Africa. Northam Platinum issued a warning about a sharp decline in profits, citing an uncertain global economic outlook that is likely to keep platinum group metal (PGM) prices low for some time.

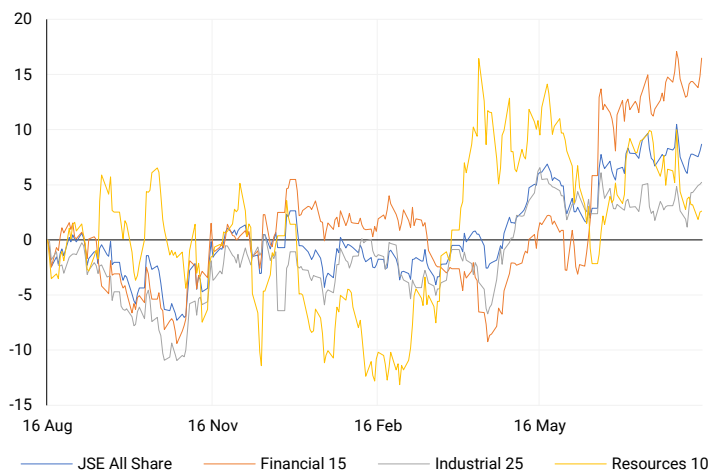
### JSE ALL SHARE

One-year



### LOCAL INDICES

Normalised percentage performances



### LOCAL SENS ANNOUNCEMENTS

#### SELECTED RELEASE

#### NORTHAM PLATINUM HOLDINGS LIMITED – Trading statement

Northam Holdings achieved solid operational performance in the financial year ending 30 June 2024, particularly in cost management and increased production. However, despite these positive factors, the company expects a decrease in earnings per share (EPS) compared to the previous year due to a significant 35.5% drop in the 4E ZAR basket price. Basic EPS is expected to decrease by 24.6% to 34.6%, and headline EPS is anticipated to decline by 76.6% to 86.6%. The number of shares in issue remained relatively stable.

NPH | -2.76% OPEN | 12448c HIGH | 12700c LOW | 12055c CLOSE | 12458c TIME | 07:05

#### ADVTECH LIMITED – Voluntary trading statement

For the six months ending 30 June 2024, both basic headline earnings per share (HEPS) and basic earnings per share (EPS) are expected to increase by 13% to 18% compared to the same period in 2023. This translates to HEPS and EPS rising to between 95.3 and 99.6 cents per share, up from 84.3 and 84.4 cents per share, respectively, in the previous year.

ADH | 1.73% OPEN | 3011c HIGH | 3081c LOW | 3005c CLOSE | 3054c TIME | 08:00

#### DRDGOLD LIMITED – Voluntary trading statement

DRDGOLD is finalizing its results for the year ending 30 June 2024 and expects to report earnings per share (EPS) between 146.6 and 161.5 cents, reflecting a change of -2% to 8% compared to the previous year's EPS of 149.1 cents. The company also anticipates headline earnings per share (HEPS) to be between 146.6 and 161.4 cents, a change of -1% to 9% compared to the prior year's HEPS of 148.2 cents.

DRD | -2.15% OPEN | 1720c HIGH | 1731c LOW | 1668c CLOSE | 1685c TIME | 08:00

#### AVENG LIMITED – Updated trading statement

The Group expects its financial results for the year ending 30 June 2024 to show significant improvement compared to the previous year. Earnings are anticipated to be between A\$24.4 million and A\$26.9 million, and headline earnings are expected to be between A\$37.2 million and A\$39.5 million, both of which represent more than a 100% increase from the previous year's losses of A\$103.97 million and A\$77.74 million, respectively. Similarly, basic and diluted earnings per share are expected to rise to 19.6–20.8 cents and 19.1–20.3 cents, respectively, from a loss of 82.4 cents per share last year. Headline earnings per share are forecasted to increase to 29.0–30.8 cents, and diluted headline earnings per share to 28.3–30.1 cents, both up from a loss of 61.6 cents per share in the previous year.

AEG | 15.92% OPEN | 809c HIGH | 910c LOW | 790c CLOSE | 910c TIME | 16:26

### EXPECTED COMPANY REPORTING SCHEDULE

COMPANY	CODE	RELEASE	DATE
Standard Bank	SBK	Interim	15 Aug '24
Thungela	TGA	Interim	21 Aug '24
Spur	SUR	Final	22 Aug '24
Gold Fields	GFI	Interim	23 Aug '24
BHP	BHG	Final	27 Aug '24

### BANK AND OTHER SELECTE PREFERENCE SHARES

COMPANY	CODE	CLOSE	CLEAN YIELD	NEXT LDT (Est.)
Investec Limited	INPR	8950	11.24	Thu, 06 Jun '24
Standard Bank	SBPP	8995	11.15	Thu, 05 Sep '24
Absa	ABSP	80053	11.48	Thu, 12 Sep '24
Capitec	CPIP	10010	9.69	Thu, 19 Sep '24
Steinhoff	SHFF	9734	10.47	Thu, 17 Oct '24
Grindrod	GNDP	9159	12.22	Thu, 19 Sep '24
Netcare	NTCP	8349	11.82	Thu, 31 Oct '24
Discovery	DSBP	9782	11.91	Thu, 19 Sep '24
Invicta	IVTP	---	13.41	Thu, 27 Jun '24

**LOCAL EQUITIES | JSE MID CAP COMPANIES** (Cents Per Share)

COMPANY	CODE	CLOSE	PREVIOUS	1D%	1M%	YTD%
Aspen Pharmacare Hldgs Ltd	APN	22692	22745	-0.23	-3.66	11.51
African Rainbow Min Ltd	ARI	19279	19501	-1.14	-14.32	-3.61
AVI Ltd	AVI	9681	9700	-0.20	-0.54	17.96
Barloworld Ltd	BAW	9284	9168	1.27	4.10	17.52
Bidvest Ltd	BVT	27005	26489	1.95	-2.38	7.04
Bytes Technology Grp PLC	BYI	11046	11000	0.42	-4.55	-22.87
Capital&Counties Prop plc	CCO	3359	3365	-0.18	-3.09	3.35
Clicks Group Ltd	CLS	35961	35403	1.58	4.37	10.41
Dis-Chem Pharmacies Ltd	DCP	3594	3570	0.67	7.00	17.11
Exxaro Resources Ltd	EXX	18201	18265	-0.35	-7.13	-10.99
Fortress Real Est INV B	FFB	1740	1732	0.46	5.97	21.17
Growthpoint Prop Ltd	GRT	1315	1303	0.92	5.88	12.59
Harmony GM Co Ltd	HAR	18025	18235	-1.15	1.93	50.72
Hammerson plc	HMN	651	649	0.31	-3.70	-4.26
Investec Ltd	INL	13632	13515	0.87	-1.32	8.54
Investec plc	INP	13583	13487	0.71	-2.74	7.84
Italtile Ltd	ITE	1185	1135	4.41	0.42	5.80
Life Healthc Grp Hldgs Ltd	LHC	1314	1298	1.23	5.12	-28.47
MultiChoice Group Ltd	MCG	10834	10630	1.92	-0.18	33.72
Montauk Renewables Inc	MKR	8450	8500	-0.59	-17.96	-50.87
Mr Price Group Ltd	MRP	22056	21678	1.74	6.87	40.65
Momentum Met Hldgs Ltd	MTM	2700	2611	3.41	17.34	23.34
Ninety One Plc	N91	3829	3778	1.35	-6.36	-11.20
Nedbank Group Ltd	NED	28630	28645	-0.05	9.77	32.41
Northam Platinum Hldgs Ltd	NPH	12458	12812	-2.76	-1.43	-11.29
NEPI Rockcastle N.V.	NRP	13910	13849	0.44	5.08	10.06
Netcare Limited	NTC	1299	1260	3.10	9.16	-8.78
Ninety One Limited	NY1	3788	3725	1.69	-5.75	-11.85
Old Mutual Limited	OMU	1202	1189	1.09	-2.75	-7.96
OUTsurance Group Ltd	OUT	4711	4704	0.15	-0.36	11.64
Pick n Pay Stores Ltd	PIK	2290	2286	0.17	-3.61	-1.59
Pepkor Holdings Ltd	PPH	2023	1973	2.53	2.17	3.06
Quilter Plc	QLT	3427	3342	2.54	21.18	41.14
Redefine Properties Ltd	RDF	441	433	1.85	2.80	14.55
Remgro Ltd	REM	13750	13251	3.77	1.02	-15.37
Resilient REIT Limited	RES	5247	5170	1.49	5.98	18.47
Reinet Investments S.C.A	RNI	46700	46446	0.55	2.91	0.17
Sappi Ltd	SAP	4473	4459	0.31	-16.55	1.20
Santam Limited	SNT	33702	33650	0.15	1.84	17.60
The Spar Group Ltd	SPP	12278	12029	2.07	1.47	4.14
Sirius Real Estate Ltd	SRE	2224	2225	-0.04	-0.71	0.41
Tiger Brands Ltd	TBS	22396	22000	1.80	6.78	11.26
Transaction Capital Ltd	TCP	283	273	3.66	-3.74	-64.54
The Foschini Group Limited	TFG	13144	12853	2.26	-2.56	18.46
Thungela Resources Ltd	TGA	12400	12458	-0.47	10.00	-19.38
Telkom SA SOC Ltd	TKG	2351	2320	1.34	-2.73	-20.95
Truworths Int Ltd	TRU	9062	8889	1.95	-2.39	21.88
Woolworths Holdings Ltd	WHL	6184	5978	3.45	2.88	-14.35
Zeda Limited	ZZD	1200	1179	1.78	-1.15	-5.88

**LOCAL EQUITIES | JSE SMALL CAP COMPANIES** (Cents Per Share)

COMPANY	CODE	CLOSE	PREVIOUS	1D%	1M%	YTD%
ArcelorMittal SA Limited	ACL	120	124	-3.23	-14.29	-26.83
ADVTECH Ltd	ADH	3054	3002	1.73	2.66	24.45
Altron Limited A	AEL	1745	1638	6.53	18.22	70.24
AECI Limited	AFE	10400	10350	0.48	-3.70	-5.19
Alexander Forbes Grp Hldgs	AFH	665	656	1.37	-9.03	0.76
Afrimat Limited	AFT	6352	6431	-1.23	-11.26	0.83
African Rainbow Cap Inv	AIL	600	605	-0.83	-6.98	22.70
Adcock Ingram Hldgs Ltd	AIP	5607	5600	0.13	-5.53	-6.71
Astral Foods Ltd	ARL	17327	16900	2.53	5.08	18.22
Attacq Limited	ATT	1097	1100	-0.27	1.11	18.98
Brait PLC	BAT	87	86	1.16	8.90	-52.20
Blue Label Telecoms Ltd	BLU	428	425	0.71	0.00	10.31
Burststone Group	BTN	789	777	1.54	1.94	-1.38
Coronation Fund Mngrs Ld	CML	3720	3691	0.79	-1.46	19.38
Curro Holdings Limited	COH	1199	1177	1.87	2.48	2.92
Cashbuild Ltd	CSB	14426	14600	-1.19	-13.61	-13.58
DRD Gold Ltd	DRD	1685	1722	-2.15	-2.99	6.85
Datatec Ltd	DTC	3507	3467	1.15	-6.73	-13.41
Emira Property Fund Ltd	EMI	1090	1091	-0.09	1.58	27.49
Equites Prop Fund Ltd	EQU	1312	1304	0.61	-2.67	-5.95
Famous Brands Ltd	FBR	5663	5600	1.13	5.85	-2.24
Fairvest Limited B	FTB	413	419	-1.43	4.03	20.06
Grindrod Ltd	GND	1543	1535	0.52	-0.58	34.64
Hosken Cons Inv Ltd	HCI	17895	18132	-1.31	-0.04	-11.67
Hudaco Industries Ltd	HDC	18052	18300	-1.36	3.01	12.38
Hyprop Inv Ltd	HYP	3439	3391	1.42	7.07	10.54
JSE Ltd	JSE	10479	10455	0.23	1.29	13.36
KAP Industrial Hldgs Ltd	KAP	290	285	1.75	-2.03	10.69
Karooooo Ltd	KRO	64247	63500	1.18	7.17	35.26
PSG Konsult Limited	KST	1635	1630	0.31	-7.57	6.51
Libstar Holdings Ltd	LBR	400	410	-2.44	3.36	14.29
Lighthouse Properties plc	LTE	812	812	0.00	2.14	10.48
Industrials REIT Limited	MLI	1.5	1.8	-16.67	200.00	114.29
MAS P.L.C	MSP	1768	1720	2.79	-1.83	2.14
Metair Investments Ltd	MTA	1265	1250	1.20	-0.78	-28.73
Motus Holdings Ltd	MTH	10530	10375	1.49	7.42	3.74
Murray & Roberts Hldgs	MUR	289	300	-3.67	25.11	93.96
Oceana Group Ltd	OCE	7100	7050	0.71	1.76	0.47
Omnia Holdings Ltd	OMN	6029	6595	-8.58	-13.62	-7.77
Pan African Resource plc	PAN	660	666	-0.90	5.10	61.37
PPC Limited	PPC	390	388	0.52	9.24	-2.26
Raubex Group Ltd	RBX	4161	4099	1.51	-8.75	50.11
RFG Holdings Limited	RFG	1549	1496	3.54	0.26	14.74
Reunert Ltd	RLO	7210	7242	-0.44	-1.49	20.29
SA Corp Real Estate Ltd	SAC	270	270	0.00	1.89	16.38
Super Group Ltd	SPG	2547	2577	-1.16	-14.50	-14.39
Stor-Age Prop REIT Ltd	SSS	1373	1365	0.59	2.23	5.13
Southern Sun LTD	SSU	610	626	-2.56	8.54	16.19
Sun International Ltd	SUI	3921	3945	-0.61	4.56	-4.37
Tharisa plc	THA	1900	1900	0.00	-3.31	25.74
Tsogo Sun Gaming Ltd	TSG	1180	1125	4.89	3.42	-3.67
Vukile Property Fund Ltd	VKE	1666	1651	0.91	2.78	17.99
Wilson Bayly Hlm-Ovc Ltd	WBO	18326	18631	-1.64	7.13	40.90

**10-YEAR BOND YIELD | SELECTED ITEMS** (Basis Point Change)

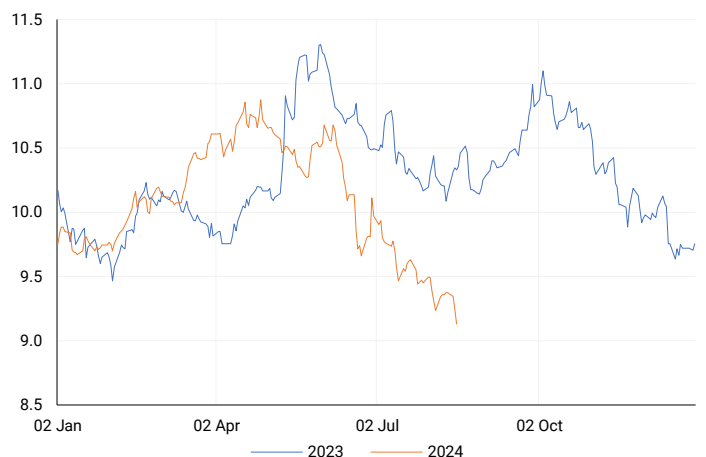
REGION	YIELD	1D	1M	1Y
United States	3.84%	0	-34	—
United Kingdom	3.82%	-6	-28	-74
Germany	2.18%	0	-32	-46
Japan	0.82%	-1	-24	—
South African 10Y	9.14%	-13	-44	-122

**GLOBAL INTEREST RATES | SELECTED ITEMS**

REGION	DATE CHANGED	CURRENT RATE
United States	Wed, 26 Jul '23	5.25%-5.50%
United Kingdom	Thu, 03 Aug '23	5.25%
European	Thu, 27 Jul '23	4.25%
SA Repo Rate	Thu, 25 May '23	8.25%
SA Prime Rate	Thu, 25 May '23	11.75%

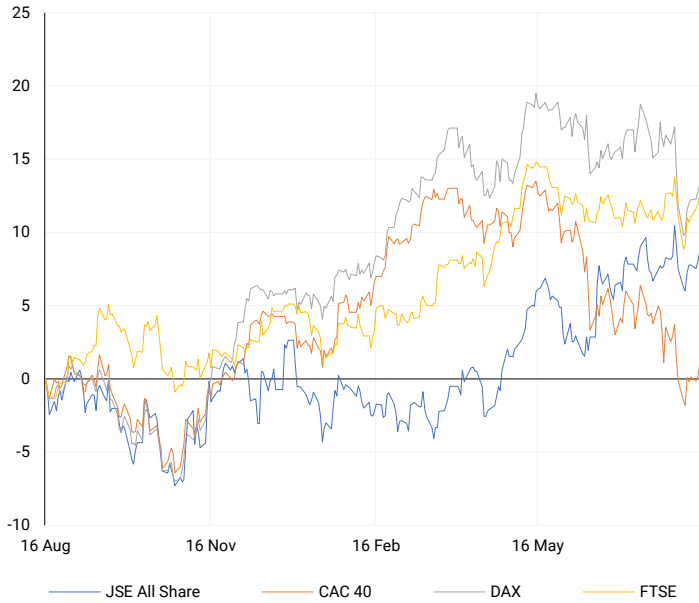
**SOUTH AFRICAN 10-YEAR**

2023 vs 2024 to date



## EUROPEAN INDICES

Normalised percentage performances



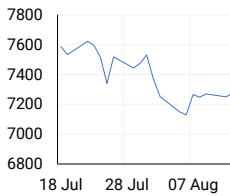
## EUROPEAN MARKET SUMMARY

### SELECTED ITEMS

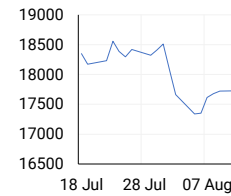
European stocks closed higher on Wednesday as investors reviewed key inflation data from the U.K. Inflation in the U.K. rose to 2.2% in July, slightly below expectations but above the Bank of England's 2% target. The consumer price index came in below the 2.3% forecast by Reuters and is the first inflation report since the Bank of England's recent 25 basis point interest rate cut. Services inflation, an important indicator for the central bank, decreased to 5.2% from 5.7%. Swiss bank UBS saw a 5.29% increase in its stock price after significantly surpassing net profit forecasts for the second quarter.

EUROPEAN INDICES	CLOSE	PREVIOUS	1D%	5D%	1M%	YTD%
CAC 40	7333.36	7275.87	0.79	0.93	-5.06	-2.78
DAX 30	17885.60	17812.05	0.41	1.54	-4.60	6.77
Eurostoxx 50	4720.40	4691.80	0.61	1.09	-6.43	4.40
FTSE	8281.05	8235.23	0.56	1.40	0.34	7.08

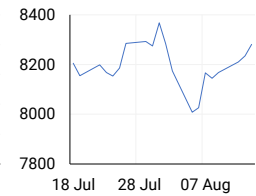
### CAC 40



### DAX

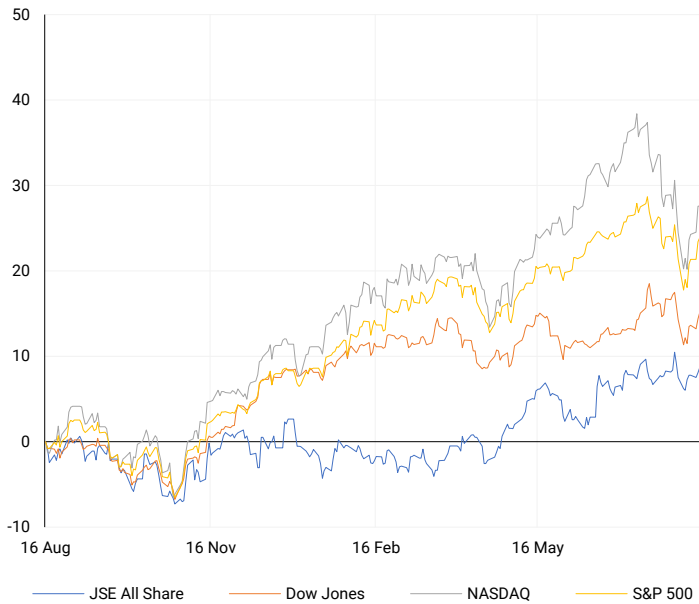


### FTSE



## AMERICAN INDICES

Normalised percentage performances



## AMERICAN MARKET SUMMARY

### SELECTED ITEMS

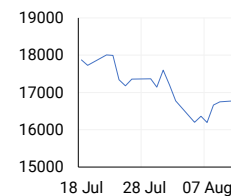
The S&P 500 and Nasdaq Composite both extended their winning streaks to five days on Wednesday, buoyed by new inflation data that reassured investors the Federal Reserve might begin cutting interest rates in September. U.S. consumer prices rose moderately in July, with inflation slowing to under 3% annually, the lowest since early 2021. This, along with earlier data showing softer-than-expected producer prices, reinforced hopes of a rate cut. A recent rebound in tech stocks has also helped markets recover from earlier losses. Investors are now focused on upcoming retail sales data for further economic insights.

AMERICAN INDICES	CLOSE	PREVIOUS	1D%	5D%	1M%	YTD%
Dow Jones	40008.39	39765.64	0.61	3.21	0.02	6.15
Nasdaq	17192.60	17187.61	0.03	6.15	-6.55	14.53
S&P 500	5455.21	5434.43	0.38	4.92	-2.85	14.37
US VIX	16.19	18.12	-10.65	-41.87	29.94	30.04

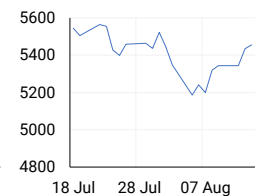
### DOW JONES



### NASDAQ

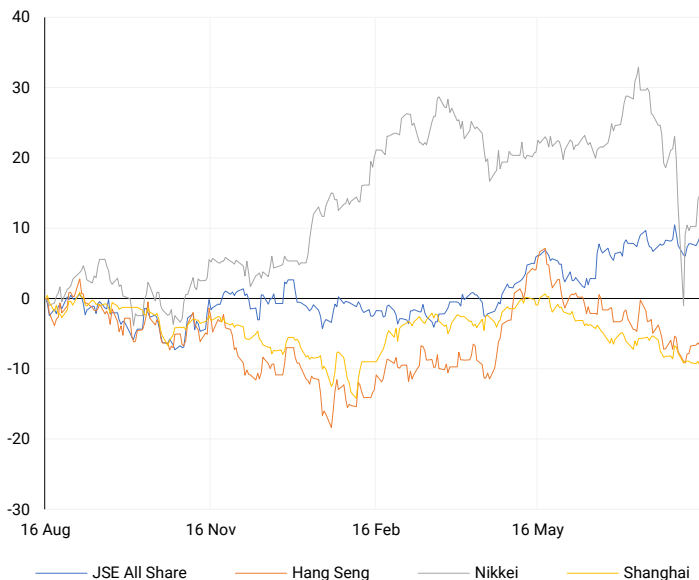


### S&P 500



## ASIAN INDICES

Normalised percentage performances



## ASIAN MARKET SUMMARY

### SELECTED ITEMS

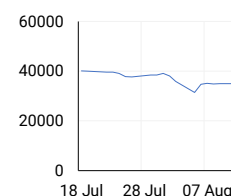
Asia-Pacific markets mostly rose this morning following Japan's better-than-expected GDP growth and mixed economic data from China. Japan's GDP grew 0.8% quarter-on-quarter in the second quarter, surpassing expectations of 0.5% growth and reversing a previous decline. However, Japan's GDP still fell 0.8% year-on-year, marking a second consecutive quarterly decline. In China, retail sales grew by 2.7% year-on-year in July, slightly above expectations, while industrial output increased by 5.1%, just below forecasts. Meanwhile, China's urban unemployment rate edged up to 5.2% from 5% in June.

ASIAN INDICES	CLOSE	PREVIOUS	1D%	5D%	1M%	YTD%
Hang Seng	17113.36	17174.06	-0.35	1.40	-6.45	0.39
Nikkei 225	36442.43	36232.51	0.58	3.86	-11.53	8.90
Shanghai	2850.65	2867.95	-0.60	-0.67	-4.06	-4.18

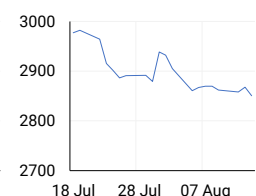
### HANG SENG



### NIKKEI



### SHANGHAI



## COMMODITIES MARKET SUMMARY

### SELECTED ITEMS

Gold prices remained steady this morning after falling 1% in the previous session, as U.S. data showing expected consumer price increases reduced the likelihood of a significant rate cut by the Federal Reserve in September. Meanwhile, oil prices rebounded, recovering some of the prior day's losses, fuelled by hopes that potential U.S. interest rate cuts could boost economic activity and fuel demand, although concerns about slowing global demand limited the gains.

COMMODITY	LAST	CLOSE	% CHG	1D%	5D%	YTD%
Brent Crude	79.98	79.86	0.15	-1.36	1.73	3.61
Gold	2454.56	2448.05	0.27	-0.69	2.74	18.66
Palladium	941.37	931.00	1.11	-0.98	5.05	-15.15
Platinum	933.71	926.30	0.80	-1.65	0.98	-6.17
Silver	27.76	27.56	0.73	-1.04	3.57	15.86

## BRENT CRUDE

One-year



## PLATINUM

One-year



## GOLD

One-year



CURRENCY PAIR	LAST	CLOSE	% CHG	1D%	5D%	YTD%
USDZAR	18.06	18.06	0.00	-0.27	-1.34	-1.43
GBPZAR	23.19	23.21	-0.10	-0.49	-0.56	-0.36
EURZAR	19.89	19.89	-0.02	-0.13	-1.03	-1.49
AUDZAR	11.97	11.92	0.36	-0.81	-0.57	-4.28
EURUSD	1.10	1.10	-0.01	0.18	0.82	-0.23
USDJPY	147.25	147.34	-0.06	0.35	0.45	4.47
GBPUSD	1.28	1.28	0.09	-0.28	1.08	0.76
USDCHF	0.87	0.87	0.03	0.06	0.35	2.81

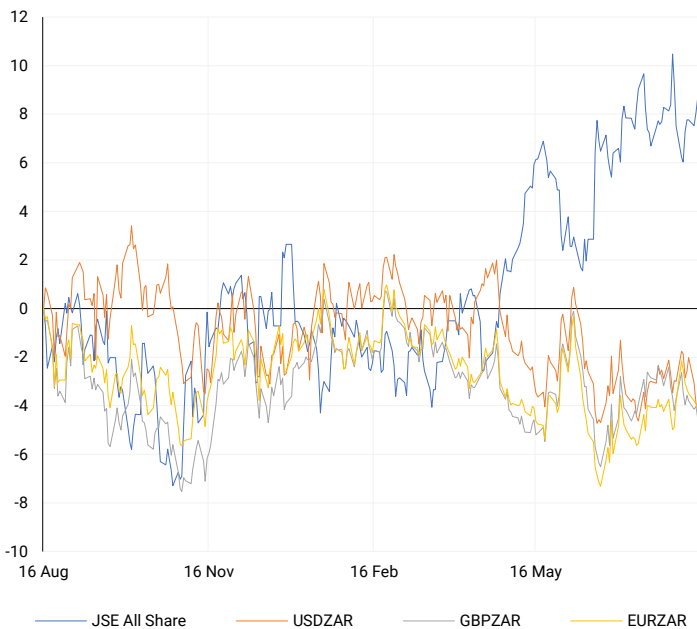
## CURRENCY MARKET SUMMARY

### SELECTED ITEMS

South Africa's rand strengthened on Wednesday following U.S. inflation data that bolstered expectations of imminent rate cuts in the U.S. This morning, the dollar weakened, while the euro hovered near an eight-month high as slowing U.S. inflation fuelled bets that the Federal Reserve might lower borrowing costs next month.

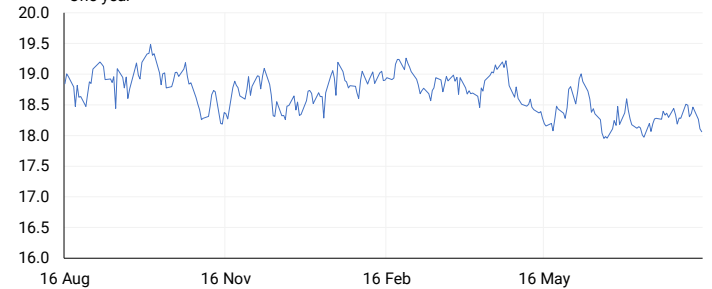
## CURRENCY PAIRS vs JSE ALL SHARE

Normalised percentage performances



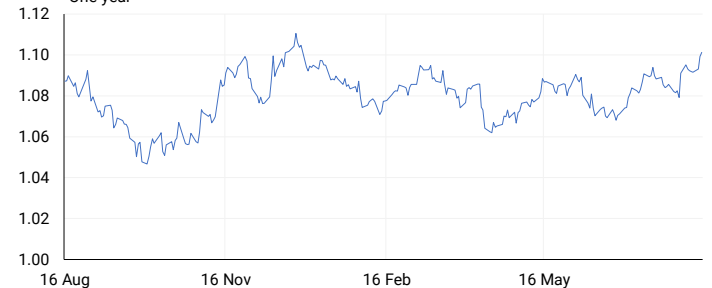
## USDZAR

One-year



## EURUSD

One-year



SOURCES | JSE, IRESS, MONEYWEB, CNBC, BBC, CNN

**Disclaimer:** This note is prepared for Sanlam Private Wealth (Pty) Ltd, by K2013143132 (Pty) Ltd trading as ThompsonGreen. ThompsonGreen is an independent company contracted to Sanlam Private Wealth (Pty) Ltd. The views expressed in this note are those of ThompsonGreen and/or its analysts and not necessarily the views of Sanlam Private Wealth (Pty) Ltd, Sanlam or any officer or agent thereof. K2013143132 (Pty) Ltd trading as ThompsonGreen is a research house and not a registered broker, financial adviser or financial service provider. Our editors and customer services teams also do not give personal investment advice. The information in this document is general advice only and may not be appropriate to your particular investment objectives, financial situation or particular needs. Before investing, or if you are in any doubt about your personal situation, you should seek professional advice from a stockbroker or independent financial adviser authorised by the Financial Sector Conduct Authority.