

GLOBAL OVERVIEW | SELECTED INDICES

SOUTH AFRICAN INDICES	CLOSE	PREVIOUS	1D%	5D%	1M%	YTD%
All Share	82824.40	82226.43	0.73	2.58	2.10	7.71
Top 40	75706.10	75170.13	0.71	2.68	2.23	7.39
Financial 15	20233.70	20053.02	0.90	4.41	5.71	13.21
Industrial 25	112092.00	111114.17	0.88	2.51	3.79	8.07
Resource 10	58934.00	58819.92	0.19	0.67	-5.51	2.44
Mid Cap	87110.70	86250.34	1.00	2.76	1.74	8.33
Small Cap	82019.80	81199.29	1.01	1.99	1.77	13.14
Banks	12789.00	12704.15	0.67	4.67	6.06	16.81
Retailers	7110.47	6993.23	1.68	5.92	6.20	14.07
Property (J253) - TR	2188.35	2188.35	0.00	0.87	3.87	17.42

AMERICAN INDICES	CLOSE	PREVIOUS	1D%	5D%	1M%	YTD%
Dow Jones	40659.76	40563.06	0.24	2.94	-0.72	7.88
Nasdaq	17631.72	17594.50	0.21	5.29	-4.74	17.46
S&P 500	5554.25	5543.22	0.20	3.93	-1.99	16.45
US VIX	14.80	15.23	-2.82	-27.34	12.21	18.88

EUROPEAN INDICES	CLOSE	PREVIOUS	1D%	5D%	1M%	YTD%
CAC 40	7449.70	7423.37	0.35	2.48	-1.72	-1.24
DAX 30	18322.40	18183.24	0.77	3.38	-1.06	9.38
Eurostoxx 50	4839.10	4816.00	0.48	3.52	-2.30	7.02
FTSE	8311.41	8347.35	-0.43	1.75	1.79	7.48

ASIAN INDICES	CLOSE	PREVIOUS	1D%	5D%	1M%	YTD%
Hang Seng	17430.16	17109.14	1.88	1.99	-1.68	2.25
Nikkei 225	38062.67	36726.64	3.64	8.67	-7.78	13.74
Shanghai	2879.43	2877.36	0.07	0.60	-3.25	-3.21

EARLY MORNING MARKETS	LAST	CLOSE	% CHG	1D%	5D%	YTD%
TENCENT	372.60	372.60	0.00	1.14	0.70	28.39
BHP AUS	3966.00	4001.00	-0.87	2.04	-2.08	-20.63

NOTE : 5D% and 1M% are rolling percentage moves

INTERNATIONAL ECONOMIC CALENDAR | SELECTED EVENTS

TIME	AREA	TODAY'S EVENTS & RELEASES	PERIOD	EXP.	PREV.
15:15	US	Fed Waller Speech	---	---	---
---	---	---	---	---	---
---	---	---	---	---	---
---	---	---	---	---	---
---	---	---	---	---	---

TIME	AREA	PREVIOUS SESSION'S RELEASES	PERIOD	EXP.	ACT.
8:00	GB	Retail Sales m/m	Jul	0.50%	0.50%
14:30	US	Building Permits Prel	Jul	1.45M	1.40M
16:00	US	Michigan Consumer Sentiment Prel	Aug	66.70	67.80
16:00	US	Michigan Inflation Expectations Prel	Aug	2.90%	2.90%
---	---	---	---	---	---

JSE ALL SHARE | BEST AND WORST ONE-DAY PERFORMERS

BEST ONE-DAY % PERFORMERS	CODE	CLOSE	1D%	5D%	YTD%
African Rainbow Cap Inv	AIL	615	5.85	-7.24	25.77
Vodacom Group Ltd	VOD	10510	5.62	5.26	-0.85
Cashbuild Ltd	CSB	15417	5.60	4.17	-7.64
KAP Limited	KAP	309	5.46	6.92	17.94
Metair Investments Ltd	MTA	1370	5.38	5.96	-22.82
Alexander Forbes Grp Hldgs	AFH	684	4.43	2.55	3.64

WORST ONE-DAY % PERFORMERS	CODE	CLOSE	1D%	5D%	YTD%
Quilter Plc	QLT	3336	-3.02	2.30	37.40
Exxaro Resources Ltd	EXX	16980	-2.92	-7.79	-16.96
African Rainbow Min Ltd	ARI	18418	-2.38	-5.98	-7.91
Super Group Ltd	SPG	2605	-1.99	-11.81	-12.44
Bytes Technology Grp PLC	BYI	10902	-1.78	0.74	-23.87

DIVIDEND DATA

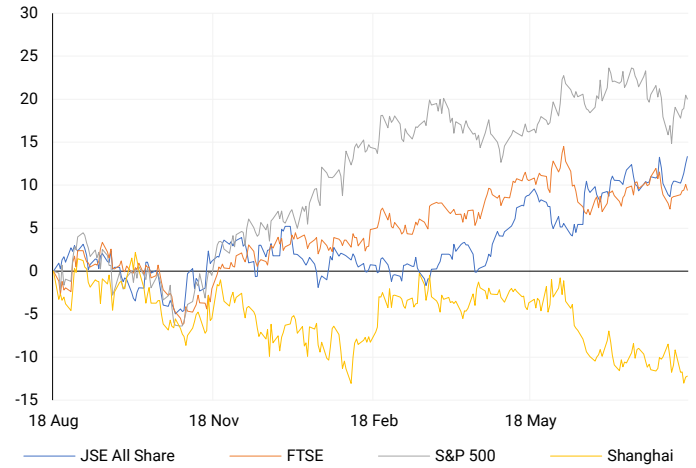
COMPANY	CODE	EXPECTED DIVIDEND	COMPANY	CODE	EXPECTED DIVIDEND
---	---	---	---	---	---
---	---	---	---	---	---
---	---	---	---	---	---
---	---	---	---	---	---
---	---	---	---	---	---

SOURCES | JSE, IRESS, MONEYWEB, CNBC, BBC, CNN

PLEASE SEE THE BOTTOM OF THE LAST PAGE FOR THE FULL DISCLAIMER

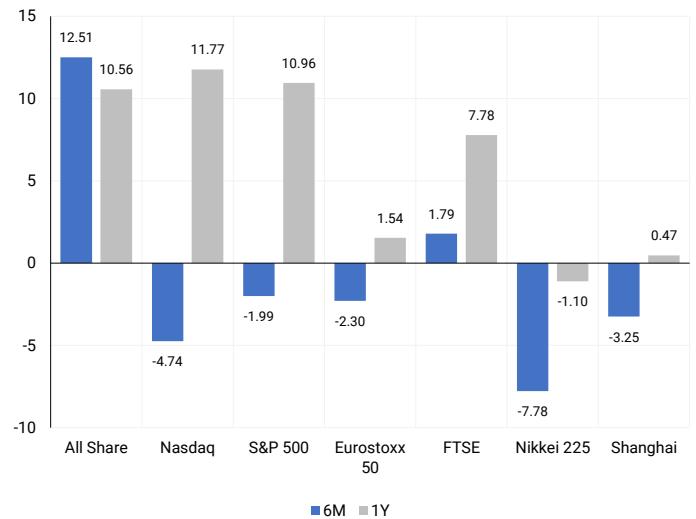
INTERNATIONAL INDICES

Normalised percentage performances - In rand terms



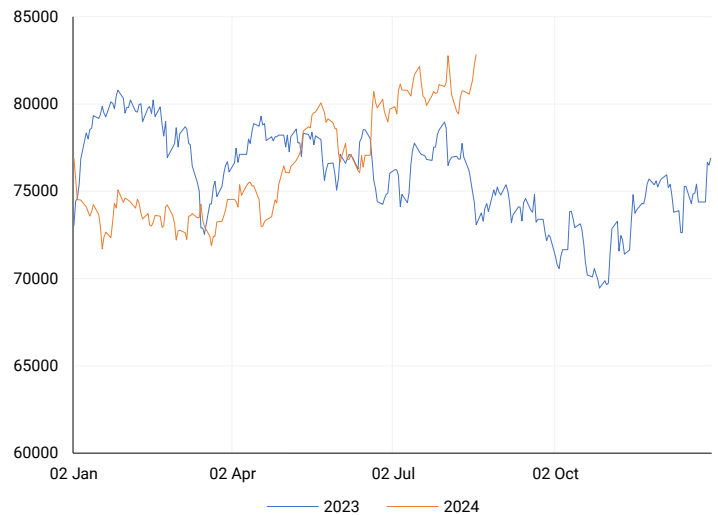
INTERNATIONAL INDICES

6-month & 1-year percentage performances



JSE ALL SHARE INDEX

2023 v 2024 to date



## LOCAL EQUITIES | JSE LARGE CAP COMPANIES (Cents Per Share)

COMPANY	CLOSE	PREVIOUS	1D%	5D%	1M%	YTD%
Absa Group Limited	15776	15589	1.20	4.11	2.67	-3.63
Anglo American plc	50175	50765	-1.16	-3.31	-7.50	5.97
Anglo American Plat Ltd	65906	64159	2.72	6.83	3.89	-31.63
Anglogold Ashanti Ltd	55397	55091	0.56	4.08	3.39	56.75
Anheuser-Busch InBev SA NV	107825	108535	-0.65	-3.25	-0.51	-10.16
BHP Group Limited	47106	47463	-0.75	-3.63	-8.26	-25.63
BID Corporation Ltd	43611	43161	1.04	2.13	2.61	2.22
British American Tob plc	63907	64792	-1.37	-2.36	10.48	18.02
Compagnie Fin Richemont	272700	274050	-0.49	2.28	-2.20	6.21
Capitec Bank Hldgs Ltd	283486	282600	0.31	2.45	2.24	39.90
Discovery Ltd	14984	14639	2.36	6.62	7.78	4.29
Firststrand Ltd	8294	8268	0.31	4.00	6.02	12.83
Gold Fields Ltd	29248	28936	1.08	0.57	-5.07	5.29
Glencore plc	9332	9450	-1.25	-0.72	-13.04	-16.42
Impala Platinum Hlgs Ltd	8611	8354	3.08	4.38	-9.09	-5.65
Kumba Iron Ore Ltd	35817	35842	-0.07	-7.10	-18.85	-41.74
Mondi plc	33749	33813	-0.19	0.13	-9.38	-7.03
MTN Group Ltd	8865	8606	3.01	6.73	12.92	-23.25
Naspers Ltd -N-	366791	365100	0.46	2.22	4.05	17.26
Prosus N.V.	65438	65500	-0.09	1.55	0.99	16.77
South32 Limited	3506	3515	-0.26	1.56	-18.88	-16.90
Standard Bank Group Ltd	23416	23224	0.83	8.07	9.93	12.52
Shoprite Holdings Ltd	30648	29736	3.07	5.73	5.88	11.43
Sanlam Limited	8476	8350	1.51	6.98	4.90	16.43
Sasol Limited	13665	13525	1.04	4.93	3.03	-26.25
Sibanye Stillwater Ltd	1837	1836	0.05	2.63	-14.52	-26.22
Vodacom Group Ltd	10510	9951	5.62	5.26	8.75	-0.85

## SOUTH AFRICAN MARKET SUMMARY

### SELECTED ITEMS

The Johannesburg Stock Exchange's Top-40 index reached a record high during Friday's trading, closing over 0.7% up. Master Drilling Group Limited issued guidance for the six months ended June 30, 2024, anticipating a sharp drop in earnings per share, expected to be between 6.00 and 40.30 cents, significantly lower than the 171.30 cents reported for the same period in 2023. Meanwhile, Standard Bank Group is exploring growth opportunities in East Africa, according to CEO Sim Tshabalala.

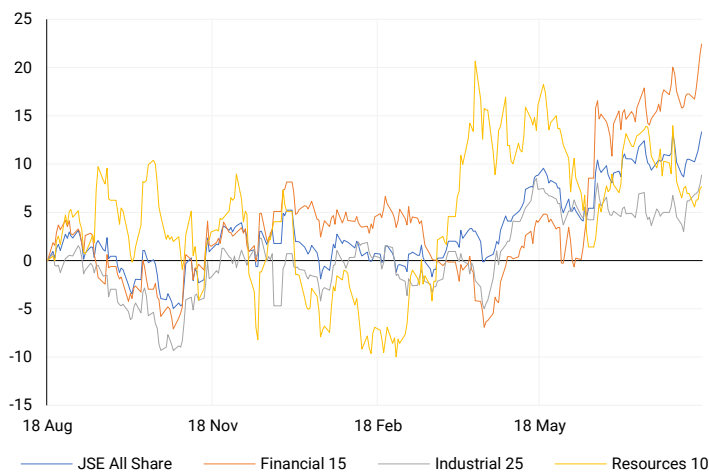
### JSE ALL SHARE

One-year



### LOCAL INDICES

Normalised percentage performances



### LOCAL SENS ANNOUNCEMENTS

#### SELECTED RELEASE

##### MASTER DRILLING GROUP LIMITED – Trading Statement

Shareholders are informed that the company's earnings per share (EPS) for the six months ended 30 June 2024 are expected to drop significantly, ranging between 6.00 and 40.30 cents per share, a decrease of 76.5% to 96.5% compared to 171.30 cents per share in the same period in 2023. This decline is mainly due to non-cash adjustments in the interim results. However, headline earnings per share (HEPS) are expected to be between 166.30 and 200.20 cents per share, showing a performance that is either slightly lower by 1.9% or up to 18.1% higher than the previous year's HEPS of 169.50 cents. In USD terms, EPS is expected to fall between 0.30 and 2.20 cents per share, a 76.9% to 96.9% decrease from 9.40 cents per share in the comparative period. HEPS in USD is anticipated to be between 8.90 and 10.70 cents per share, ranging from 4.8% lower to 15.2% higher than last year's 9.30 cents per share.

MDI | -1.74% OPEN | 1150c HIGH | 1150c LOW | 1110c CLOSE | 1130c TIME | 08:50

##### KAP LIMITED – Updated Trading Statement

On 25 June 2024, the Company informed shareholders that it expected earnings per share (EPS) to increase by at least 20% for the financial year ended 30 June 2024, compared to 21.3 cents in the previous year. Now, with financial results nearly finalized, the Company confirms that EPS is expected to be between 41.8 cents and 45.8 cents, a significant increase of 96% to 115% due to the absence of a R570 million non-cash impairment recorded in FY23. Meanwhile, headline earnings per share (HEPS) for FY24 are projected to range between 43.3 cents and 47.3 cents, reflecting a potential decrease of up to 8% compared to the 47.3 cents reported for FY23.

KAP | 5.46% OPEN | 294c HIGH | 316c LOW | 293c CLOSE | 309c TIME | 15:00

### EXPECTED COMPANY REPORTING SCHEDULE

COMPANY	CODE	RELEASE	DATE
Thungela	TGA	Interim	21 Aug '24
Spur	SUR	Final	22 Aug '24
Gold Fields	GFI	Interim	23 Aug '24
BHP	BHG	Final	27 Aug '24
---	---	---	---

### BANK AND OTHER SELECTE PREFERENCE SHARES

COMPANY	CODE	CLOSE	CLEAN YIELD	NEXT LDT (Est.)
Investec Limited	INPR	8850	11.24	Thu, 06 Jun '24
Standard Bank	SBPP	8901	11.15	Thu, 05 Sep '24
Absa	ABSP	79999	11.48	Thu, 12 Sep '24
Capitec	CPIP	10010	9.69	Thu, 19 Sep '24
Steinhoff	SHFF	9734	10.47	Thu, 17 Oct '24
Grindrod	GNDP	9000	12.22	Thu, 19 Sep '24
Netcare	NTCP	8200	11.82	Thu, 31 Oct '24
Discovery	DSBP	9600	11.91	Thu, 19 Sep '24
Invicta	IVTP VTP is invalid.		13.41	Thu, 27 Jun '24

**LOCAL EQUITIES | JSE MID CAP COMPANIES** (Cents Per Share)

COMPANY	CODE	CLOSE	PREVIOUS	1D%	1M%	YTD%
Aspen Pharmacare Hldgs Ltd	APN	22987	22869	0.52	-1.84	12.96
African Rainbow Min Ltd	ARI	18418	18867	-2.38	-18.54	-7.91
AVI Ltd	AVI	9900	9804	0.98	1.52	20.63
Barloworld Ltd	BAW	9244	9306	-0.67	4.10	17.01
Bidvest Ltd	BVT	28352	27365	3.61	1.68	12.38
Bytes Technology Grp PLC	BYI	10902	11100	-1.78	-8.08	-23.87
Capital&Counties Prop plc	CCO	3368	3310	1.75	-3.41	3.63
Clicks Group Ltd	CLS	35653	35787	-0.37	3.11	9.46
Dis-Chem Pharmacies Ltd	DCP	3620	3582	1.06	4.99	17.95
Exxaro Resources Ltd	EXX	16980	17490	-2.92	-13.67	-16.96
Fortress Real Est INV B	FFB	1783	1771	0.68	6.38	24.16
Growthpoint Prop Ltd	GRT	1348	1335	0.97	9.86	15.41
Harmony GM Co Ltd	HAR	18485	18371	0.62	-3.91	54.57
Hammerson plc	HMN	658	654	0.61	-3.80	-3.24
Investec Ltd	INL	13684	13580	0.77	-1.42	8.96
Investec plc	INP	13696	13559	1.01	-2.66	8.74
Italtile Ltd	ITE	1229	1200	2.42	3.45	9.73
Life Healthc Grp Hldgs Ltd	LHC	1339	1331	0.60	6.27	-27.11
MultiChoice Group Ltd	MCG	10962	10939	0.21	1.50	35.30
Montauk Renewables Inc	MKR	8076	8174	-1.20	-20.82	-53.05
Mr Price Group Ltd	MRP	22804	22465	1.51	9.72	45.42
Momentum Met Hldgs Ltd	MTM	2735	2731	0.15	18.91	24.94
Ninety One Plc	N91	3887	3830	1.49	-5.43	-9.86
Nedbank Group Ltd	NED	29501	29101	1.37	14.48	36.43
Northam Platinum Hldgs Ltd	NPH	12326	12413	-0.70	-6.22	-12.23
NEPI Rockcastle N.V.	NRP	14053	13850	1.47	6.28	11.20
Netcare Limited	NTC	1322	1310	0.92	11.37	-7.16
Ninety One Limited	NY1	3833	3789	1.16	-4.65	-10.80
Old Mutual Limited	OMU	1229	1220	0.74	0.33	-5.90
OUTsurance Group Ltd	OUT	4766	4714	1.10	0.91	12.94
Pick n Pay Stores Ltd	PIK	2307	2280	1.18	-4.77	-0.86
Pepkor Holdings Ltd	PPH	2116	2100	0.76	6.44	7.79
Quilter Plc	QLT	3336	3440	-3.02	17.55	37.40
Redefine Properties Ltd	RDF	448	434	3.23	4.67	16.36
Remgro Ltd	REM	14010	13925	0.61	4.28	-13.77
Resilient REIT Limited	RES	5360	5302	1.09	6.60	21.02
Reinet Investments S.C.A	RNI	46888	46377	1.10	4.45	0.57
Sappi Ltd	SAP	4477	4497	-0.44	-15.62	1.29
Santam Limited	SNT	35380	34501	2.55	7.60	23.46
The Spar Group Ltd	SPP	12600	12371	1.85	4.66	6.87
Sirius Real Estate Ltd	SRE	2228	2230	-0.09	-2.88	0.59
Tiger Brands Ltd	TBS	22491	22430	0.27	4.96	11.73
Transaction Capital Ltd	TCP	287	285	0.70	-0.35	-64.04
The Foschini Group Limited	TFG	13706	13491	1.59	0.78	23.52
Thungela Resources Ltd	TGA	12500	12400	0.81	10.26	-18.73
Telkom SA SOC Ltd	TKG	2398	2394	0.17	4.58	-19.37
Truworths Int Ltd	TRU	9591	9378	2.27	3.91	29.00
Woolworths Holdings Ltd	WHL	6478	6309	2.68	8.44	-10.28
Zeda Limited	ZZD	1239	1213	2.14	5.00	-2.82

**LOCAL EQUITIES | JSE SMALL CAP COMPANIES** (Cents Per Share)

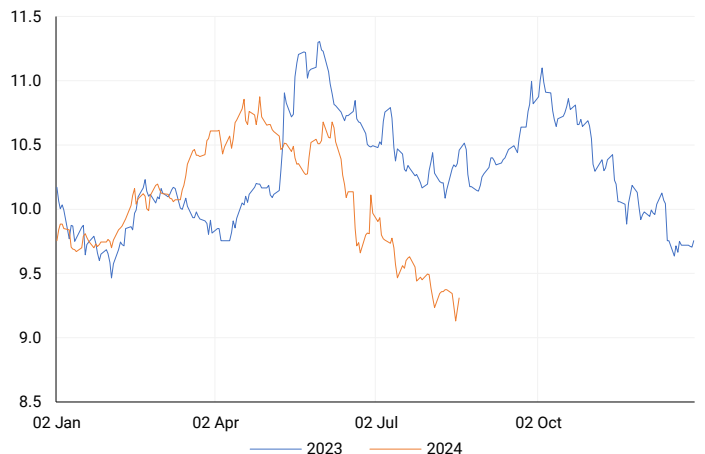
COMPANY	CODE	CLOSE	PREVIOUS	1D%	1M%	YTD%
ArcelorMittal SA Limited	ACL	124	119	4.20	-10.14	-24.39
ADVTECH Ltd	ADH	3050	3060	-0.33	2.62	24.29
Altron Limited A	AEL	1725	1720	0.29	15.00	68.29
AECI Limited	AFE	10700	10647	0.50	-0.67	-2.45
Alexander Forbes Grp Hldgs	AFH	684	655	4.43	-5.79	3.64
Afrimat Limited	AFT	6300	6320	-0.32	-10.59	0.00
African Rainbow Cap Inv	AIL	615	581	5.85	-5.38	25.77
Adcock Ingram Hldgs Ltd	AIP	5699	5671	0.49	-2.65	-5.17
Astral Foods Ltd	ARL	17190	17132	0.34	3.90	17.28
Attacq Limited	ATT	1125	1100	2.27	2.83	22.02
Brait PLC	BAT	88	86	2.33	12.19	-51.65
Blue Label Telecoms Ltd	BLU	430	430	0.00	1.42	10.82
Burstone Group	BTN	807	789	2.28	2.28	0.88
Coronation Fund Mngrs Ld	CML	3850	3760	2.39	-0.72	23.56
Curro Holdings Limited	COH	1207	1205	0.17	2.72	3.61
Cashbuild Ltd	CSB	15417	14600	5.60	-7.58	-7.64
DRD Gold Ltd	DRD	1727	1685	2.49	-9.25	9.51
Datatec Ltd	DTC	3506	3510	-0.11	-7.76	-13.43
Emira Property Fund Ltd	EMI	1090	1083	0.65	0.09	27.49
Equites Prop Fund Ltd	EQU	1344	1336	0.60	0.30	-3.66
Famous Brands Ltd	FBR	5605	5633	-0.50	4.77	-3.25
Fairvest Limited B	FTB	429	420	2.14	6.19	24.71
Grindrod Ltd	GND	1550	1546	0.26	-0.83	35.25
Hosken Cons Inv Ltd	HCI	18031	17856	0.98	-1.47	-11.00
Hudaco Industries Ltd	HDC	18050	18095	-0.25	4.94	12.37
Hyprop Inv Ltd	HYP	3518	3475	1.24	8.95	13.08
JSE Ltd	JSE	10873	10749	1.15	5.67	17.62
KAP Industrial Hldgs Ltd	KAP	309	293	5.46	5.82	17.94
Karooooo Ltd	KRO	66800	65246	2.38	18.43	40.63
PSG Konsult Limited	KST	1679	1645	2.07	-4.66	9.38
Libstar Holdings Ltd	LBR	400	400	0.00	2.56	14.29
Lighthouse Properties plc	LTE	830	814	1.97	3.75	12.93
Industrials REIT Limited	MLI	1.4	1.5	-6.67	180.00	100.00
MAS P.L.C	MSP	1760	1745	0.86	-2.98	1.68
Metair Investments Ltd	MTA	1370	1300	5.38	-4.46	-22.82
Motus Holdings Ltd	MTH	11050	10835	1.98	10.26	8.87
Murray & Roberts Hldgs	MUR	290	302	-3.97	17.41	94.63
Oceana Group Ltd	OCE	7010	7005	0.07	4.24	-0.81
Omnia Holdings Ltd	OMN	5995	6059	-1.06	-11.34	-8.29
Pan African Resource plc	PAN	683	674	1.34	3.64	66.99
PPC Limited	PPC	401	400	0.25	9.86	0.50
Raubex Group Ltd	RBX	4343	4250	2.19	-3.47	56.67
RFG Holdings Limited	RFG	1570	1548	1.42	2.28	16.30
Reunert Ltd	RLO	7413	7240	2.39	1.51	23.67
SA Corp Real Estate Ltd	SAC	277	270	2.59	4.14	19.40
Super Group Ltd	SPG	2605	2658	-1.99	-13.17	-12.44
Stor-Age Prop REIT Ltd	SSS	1419	1372	3.43	4.65	8.65
Southern Sun LTD	SSU	620	616	0.65	10.52	18.10
Sun International Ltd	SUI	3968	3944	0.61	5.64	-3.22
Tharisa plc	THA	1900	1900	0.00	0.00	25.74
Tsogo Sun Gaming Ltd	TSG	1150	1169	-1.63	2.68	-6.12
Vukile Property Fund Ltd	VKE	1725	1681	2.62	4.42	22.17
Wilson Bayly Hlm-Ovc Ltd	WBO	18498	18314	1.00	4.86	42.23

**10-YEAR BOND YIELD | SELECTED ITEMS** (Basis Point Change)

REGION	YIELD	1D	1M	1Y
United States	3.89%	-2	-31	--
United Kingdom	3.92%	0	-14	-75
Germany	2.24%	-1	-18	-37
Japan	0.88%	6	-14	--
South African 10Y	9.32%	9	-28	-110

**SOUTH AFRICAN 10-YEAR**

2023 vs 2024 to date

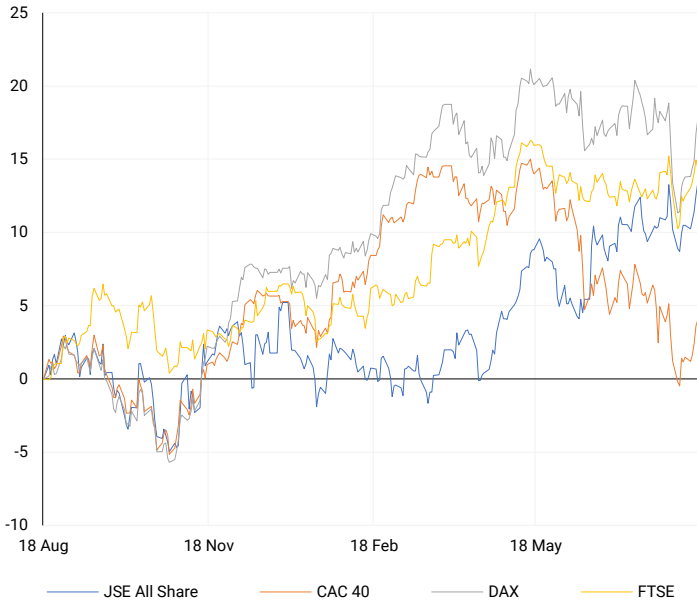


**GLOBAL INTEREST RATES | SELECTED ITEMS**

REGION	DATE CHANGED	CURRENT RATE
United States	Wed, 26 Jul '23	5.25%-5.50%
United Kingdom	Thu, 03 Aug '23	5.25%
European	Thu, 27 Jul '23	4.25%
SA Repo Rate	Thu, 25 May '23	8.25%
SA Prime Rate	Thu, 25 May '23	11.75%

## EUROPEAN INDICES

Normalised percentage performances



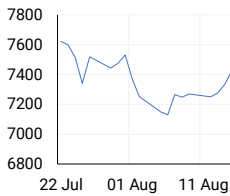
## EUROPEAN MARKET SUMMARY

### SELECTED ITEMS

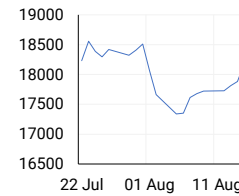
European shares ended the week on Friday with solid gains, as the pan-European STOXX 600 index rose, reaching its highest level in two weeks and recording its best performance since May 6. However, London's FTSE 100 lagged behind other major European markets, edging lower despite British retail sales increasing by 0.5% in July, as expected.

EUROPEAN INDICES	CLOSE	PREVIOUS	1D%	5D%	1M%	YTD%
CAC 40	7449.70	7423.37	0.35	2.48	-1.72	-1.24
DAX 30	18322.40	18183.24	0.77	3.38	-1.06	9.38
Eurostoxx 50	4839.10	4816.00	0.48	3.52	-2.30	7.02
FTSE	8311.41	8347.35	-0.43	1.75	1.79	7.48

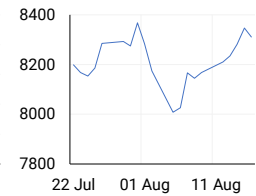
### CAC 40



### DAX



### FTSE



## AMERICAN INDICES

Normalised percentage performances



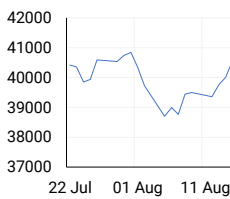
## AMERICAN MARKET SUMMARY

### SELECTED ITEMS

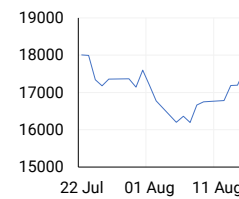
U.S. stocks ended the week on a high note on Friday, with the S&P 500 and Nasdaq recording their largest weekly percentage gains since late October, as investor sentiment improved. The market rallied for a seventh consecutive session, driven by data showing continued moderation in inflation and resilient consumer spending. Single-family housing starts fell to a 1.5-year low in July, but this was offset by a stronger-than-expected improvement in consumer sentiment for August, according to the University of Michigan. Investors are now looking ahead to the Jackson Hole Economic Symposium this week.

AMERICAN INDICES	CLOSE	PREVIOUS	1D%	5D%	1M%	YTD%
Dow Jones	40659.76	40563.06	0.24	2.94	-0.72	7.88
Nasdaq	17631.72	17594.50	0.21	5.29	-4.74	17.46
S&P 500	5554.25	5543.22	0.20	3.93	-1.99	16.45
US VIX	14.80	15.23	-2.82	-27.34	12.21	18.88

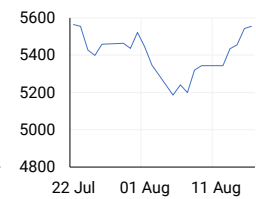
### DOW JONES



### NASDAQ

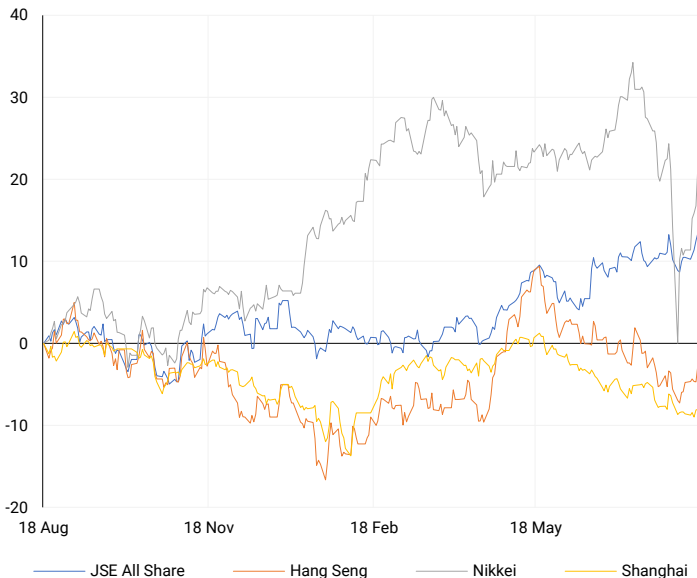


### S&P 500



## ASIAN INDICES

Normalised percentage performances



## ASIAN MARKET SUMMARY

### SELECTED ITEMS

Asia-Pacific markets mostly declined this morning, pulling back after last week's broad rally in stocks. Traders in the region are bracing for a series of key central bank decisions and economic data releases this week. The Bank of Korea's interest rate decision and the Reserve Bank of Australia's August meeting minutes are among the anticipated events. Additionally, inflation data from Japan and Singapore will be released on Friday, while China is set to announce its one-year and five-year loan prime rates on Tuesday.

ASIAN INDICES	CLOSE	PREVIOUS	1D%	5D%	1M%	YTD%
Hang Seng	17430.16	17109.14	1.88	1.99	-1.68	2.25
Nikkei 225	38062.67	36726.64	3.64	8.67	-7.78	13.74
Shanghai	2879.43	2877.36	0.07	0.60	-3.25	-3.21

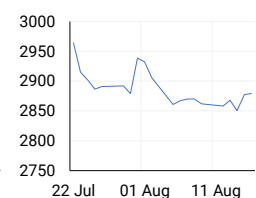
### HANG SENG



### NIKKEI



### SHANGHAI



## COMMODITIES MARKET SUMMARY

### SELECTED ITEMS

Gold prices remained steady this morning, hovering near the record high reached in the previous session. The stability is largely due to growing expectations of a U.S. interest rate cut next month, which enhances the appeal of gold as an investment. Meanwhile, oil prices dipped in early Asian trading, pressured by concerns over weaker demand from China, the world's largest oil importer. Investors are also closely monitoring ceasefire talks in the Middle East, as progress could potentially ease supply risks in the region.

COMMODITY	LAST	CLOSE	% CHG	1D%	5D%	YTD%
Brent Crude	79.57	79.66	-0.11	-1.61	-0.05	3.35
Gold	2502.37	2508.04	-0.23	2.10	3.16	21.57
Palladium	945.76	954.01	-0.86	0.93	5.06	-13.06
Platinum	956.64	957.45	-0.08	0.08	3.47	-3.02
Silver	28.98	29.02	-0.14	2.29	5.64	21.99

## BRENT CRUDE

One-year



## PLATINUM

One-year



## GOLD

One-year



CURRENCY PAIR	LAST	CLOSE	% CHG	1D%	5D%	YTD%
USDZAR	17.83	17.91	-0.45	-0.57	-3.02	-2.28
GBPZAR	23.09	23.13	-0.14	-0.19	-1.10	-0.73
EURZAR	19.68	19.70	-0.13	-0.30	-1.51	-2.41
AUDZAR	11.92	11.92	0.05	0.04	-1.06	-4.35
EURUSD	1.10	1.10	0.12	0.49	1.02	-0.09
USDJPY	146.04	147.60	-1.06	-1.13	0.67	4.65
GBPUSD	1.30	1.29	0.08	0.68	1.46	1.68
USDCHF	0.86	0.87	-0.27	-0.78	0.09	2.92

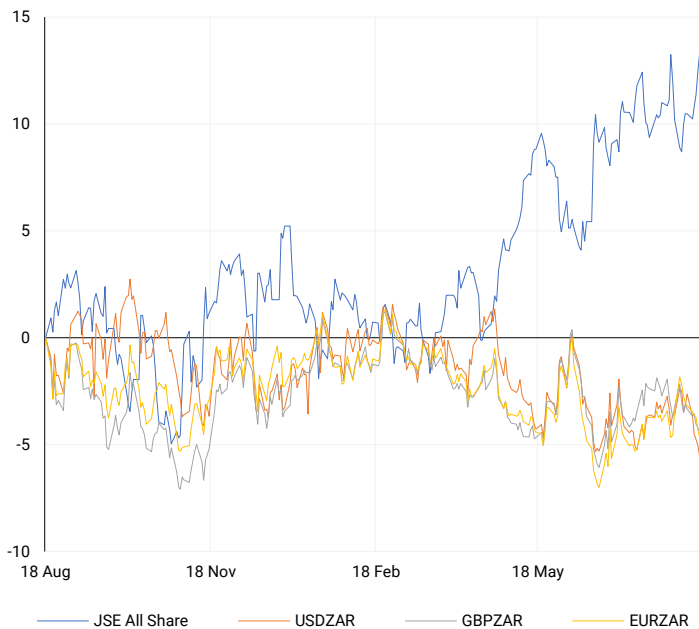
## CURRENCY MARKET SUMMARY

### SELECTED ITEMS

South Africa's rand was set for a weekly gain of over 2%, while local stocks reached a record high in intraday trading on Friday. This positive momentum was driven by strong U.S. economic data, which eased fears of a looming recession in the world's largest economy. Meanwhile, the U.S. dollar struggled to gain traction against other major currencies this morning as investors awaited new developments that could provide insight into future U.S. interest rate decisions. Additionally, Bitcoin, the leading cryptocurrency, saw a notable increase of 5.17%, rising to \$59,609 by Friday evening.

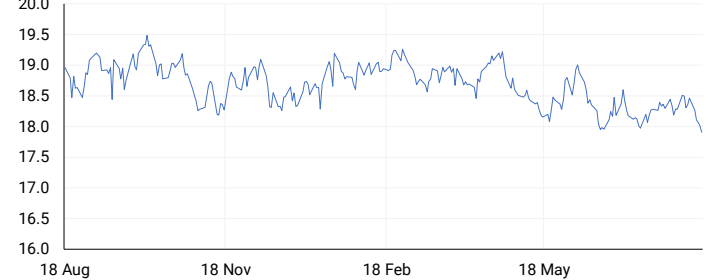
## CURRENCY PAIRS vs JSE ALL SHARE

Normalised percentage performances



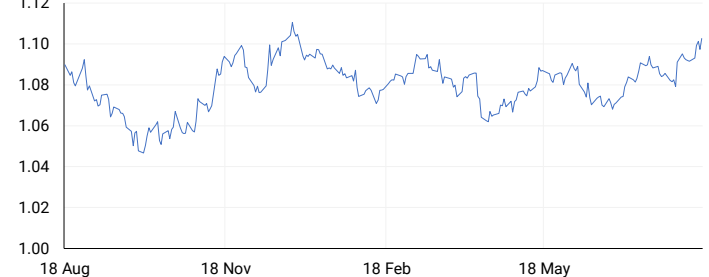
## USDZAR

One-year



## EURUSD

One-year



SOURCES | JSE, IRESS, MONEYWEB, CNBC, BBC, CNN

**Disclaimer:** This note is prepared for Sanlam Private Wealth (Pty) Ltd, by K2013143132 (Pty) Ltd trading as ThompsonGreen. ThompsonGreen is an independent company contracted to Sanlam Private Wealth (Pty) Ltd. The views expressed in this note are those of ThompsonGreen and/or its analysts and not necessarily the views of Sanlam Private Wealth (Pty) Ltd, Sanlam or any officer or agent thereof. K2013143132 (Pty) Ltd trading as ThompsonGreen is a research house and not a registered broker, financial adviser or financial service provider. Our editors and customer services teams also do not give personal investment advice. The information in this document is general advice only and may not be appropriate to your particular investment objectives, financial situation or particular needs. Before investing, or if you are in any doubt about your personal situation, you should seek professional advice from a stockbroker or independent financial adviser authorised by the Financial Sector Conduct Authority.