

GLOBAL OVERVIEW | SELECTED INDICES

SOUTH AFRICAN INDICES	CLOSE	PREVIOUS	1D%	5D%	1M%	YTD%
All Share	83799.30	82824.44	1.18	4.02	4.85	8.98
Top 40	76665.20	75706.13	1.27	4.10	5.12	8.75
Financial 15	20518.20	20233.66	1.41	6.38	8.25	14.80
Industrial 25	112782.00	112092.05	0.62	2.52	5.69	8.74
Resource 10	60314.60	58933.98	2.34	4.38	-0.58	4.84
Mid Cap	88076.70	87110.70	1.11	4.56	4.97	9.53
Small Cap	82312.50	82019.77	0.36	3.38	3.46	13.54
Banks	13021.50	12788.97	1.82	6.92	8.90	18.94
Retailers	7225.13	7110.47	1.61	8.51	9.97	15.91
Property (J253) - TR	2222.70	2222.70	0.00	3.18	7.71	19.26

AMERICAN INDICES	CLOSE	PREVIOUS	1D%	5D%	1M%	YTD%
Dow Jones	40896.53	40659.76	0.58	3.91	1.51	8.51
Nasdaq	17876.77	17631.72	1.39	6.53	0.85	19.09
S&P 500	5608.25	5554.25	0.97	4.94	1.88	17.58
US VIX	14.65	14.80	-1.01	-29.26	-11.32	17.67

EUROPEAN INDICES	CLOSE	PREVIOUS	1D%	5D%	1M%	YTD%
CAC 40	7502.01	7449.70	0.70	3.47	-0.43	-0.55
DAX 30	18421.69	18322.40	0.54	3.92	1.37	9.97
Eurostoxx 50	4873.70	4839.10	0.72	4.22	1.00	7.79
FTSE	8356.94	8311.41	0.55	1.79	2.47	8.07

ASIAN INDICES	CLOSE	PREVIOUS	1D%	5D%	1M%	YTD%
Hang Seng	17569.57	17430.16	0.80	2.68	0.87	3.06
Nikkei 225	37388.62	38062.67	-1.77	6.75	-6.68	11.73
Shanghai	2893.67	2879.43	0.49	1.24	-2.97	-2.73

EARLY MORNING MARKETS	LAST	CLOSE	% CHG	1D%	5D%	YTD%
TENCENT	371.80	372.60	-0.21	0.00	-0.64	28.39
BHP AUS	4002.00	3973.00	0.73	-0.70	-2.24	-21.19

NOTE : 5D% and 1M% are rolling percentage moves

INTERNATIONAL ECONOMIC CALENDAR | SELECTED EVENTS

TIME	AREA	TODAY'S EVENTS & RELEASES	PERIOD	EXP.	PREV.
9:00	ZA	Leading Business Cycle Indicator m/m	Jun	0.60%	-1.00%
---	---	---	---	---	---
---	---	---	---	---	---
---	---	---	---	---	---
---	---	---	---	---	---

TIME	AREA	PREVIOUS SESSION'S RELEASES	PERIOD	EXP.	ACT.
15:15	US	Fed Waller Speech	---	---	---
---	---	---	---	---	---
---	---	---	---	---	---
---	---	---	---	---	---
---	---	---	---	---	---

JSE ALL SHARE | BEST AND WORST ONE-DAY PERFORMERS

BEST ONE-DAY % PERFORMERS	CODE	CLOSE	1D%	5D%	YTD%
Cashbuild Ltd	CSB	16615	7.77	17.08	-0.47
Absa Group Limited	ABG	16558	4.96	10.08	1.14
Anglo American Plat Ltd	AMS	69040	4.76	10.85	-28.38
Omnia Holdings Ltd	OMN	6261	4.44	-2.73	-4.22
Harmony GM Co Ltd	HAR	19282	4.31	10.25	61.23
Sibanye Stillwater Ltd	SSW	1911	4.03	7.97	-23.25

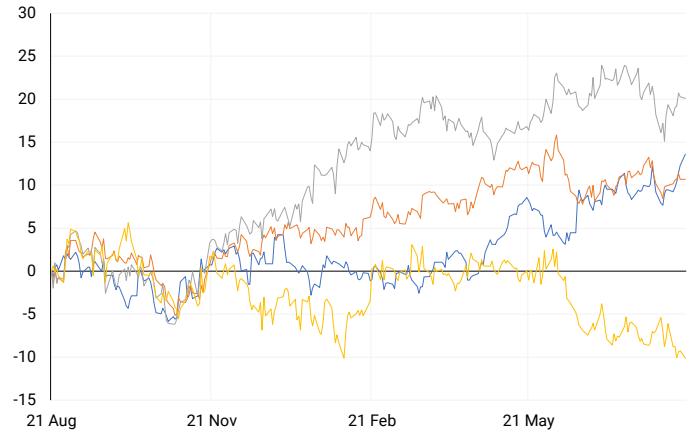
WORST ONE-DAY % PERFORMERS	CODE	CLOSE	1D%	5D%	YTD%
Karoo000 Ltd	KRO	65008	-2.68	2.68	36.86
Emira Property Fund Ltd	EMI	1063	-2.48	-0.93	24.33
Fortress Real Est Inv B	FFB	1744	-2.19	0.81	145.63
SA Corp Real Estate Ltd	SAC	271	-2.17	2.26	16.81
Thungela Resources Ltd	TGA	12237	-2.10	-2.90	-20.44

DIVIDEND DATA

COMPANY	CODE	EXPECTED DIVIDEND	COMPANY	CODE	EXPECTED DIVIDEND
---	---	---	---	---	---
---	---	---	---	---	---
---	---	---	---	---	---
---	---	---	---	---	---
---	---	---	---	---	---

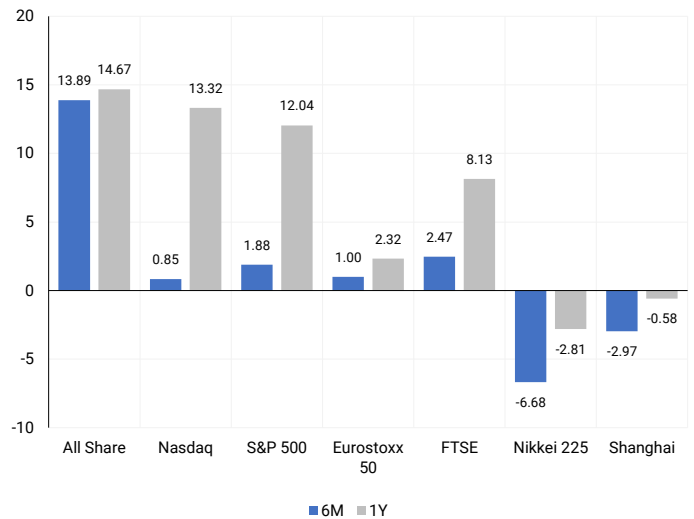
INTERNATIONAL INDICES

Normalised percentage performances - In rand terms



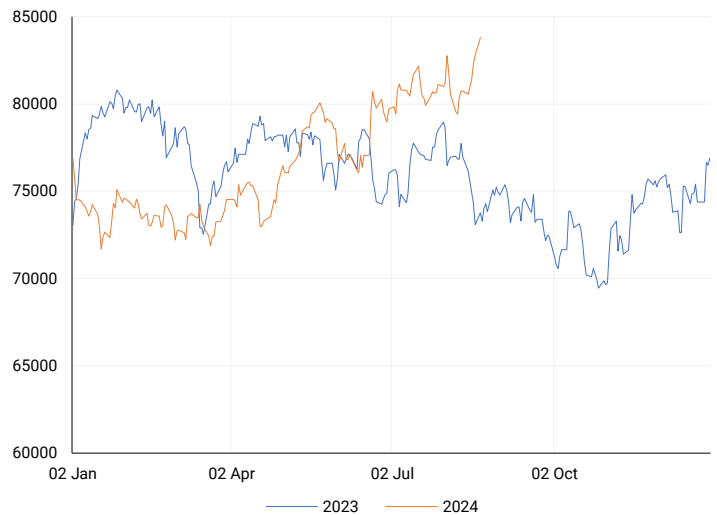
INTERNATIONAL INDICES

6-month & 1-year percentage performances



JSE ALL SHARE INDEX

2023 v 2024 to date



## LOCAL EQUITIES | JSE LARGE CAP COMPANIES (Cents Per Share)

COMPANY	CLOSE	PREVIOUS	1D%	5D%	1M%	YTD%
Absa Group Limited	16558	15776	4.96	10.08	6.35	1.14
Anglo American plc	51681	50175	3.00	-0.99	-2.50	9.15
Anglo American Plat Ltd	69040	65906	4.76	10.85	13.00	-28.38
Anglogold Ashanti Ltd	55737	55397	0.61	4.44	8.16	57.71
Anheuser-Busch InBev SA NV	108141	107825	0.29	-1.57	-2.18	-9.89
BHP Group Limited	47990	47106	1.88	-1.35	-5.24	-24.24
BID Corporation Ltd	43810	43611	0.46	2.19	0.44	2.68
British American Tob plc	64172	63907	0.41	-1.73	6.07	18.51
Compagnie Fin Richemont	277974	272700	1.93	3.52	1.56	8.26
Capitec Bank Hldgs Ltd	288000	283486	1.59	5.28	6.65	42.13
Discovery Ltd	15016	14984	0.21	7.26	9.77	4.51
Firststrand Ltd	8460	8294	2.00	6.35	7.77	15.09
Gold Fields Ltd	30100	29248	2.91	10.14	-0.26	8.36
Glencore plc	9594	9332	2.81	0.51	-8.65	-14.07
Impala Platinum Hlgs Ltd	8845	8611	2.72	7.71	-3.04	-3.09
Kumba Iron Ore Ltd	36362	35817	1.52	-6.70	-11.31	-40.85
Mondi plc	34059	33749	0.92	2.39	-8.20	-6.17
MTN Group Ltd	9028	8865	1.84	8.90	20.02	-21.84
Naspers Ltd -N-	365012	366791	-0.49	-1.24	6.23	16.69
Prosus N.V.	65785	65438	0.53	-0.10	3.02	17.39
South32 Limited	3549	3506	1.23	1.55	-14.69	-15.88
Standard Bank Group Ltd	23719	23416	1.29	9.73	13.27	13.98
Shoprite Holdings Ltd	30751	30648	0.34	6.09	6.71	11.80
Sanlam Limited	8515	8476	0.46	7.85	6.92	16.96
Sasol Limited	13753	13665	0.64	7.03	0.81	-25.78
Sibanye Stillwater Ltd	1911	1837	4.03	7.97	-5.82	-23.25
Vodacom Group Ltd	10728	10510	2.07	9.84	15.27	1.21

## SOUTH AFRICAN MARKET SUMMARY

### SELECTED ITEMS

On the stock market, South Africa's Top-40 index closed up 1.27% as investors focused on the upcoming July inflation figures, expected on Wednesday, which could provide clues about the central bank's future interest rate decisions. Meanwhile, Absa Group reported a significant decline in earnings for the first half of 2024 due to widespread economic challenges and ongoing pressure on household finances. MTN Group, Africa's largest wireless carrier by revenue, posted its first loss since 2016.

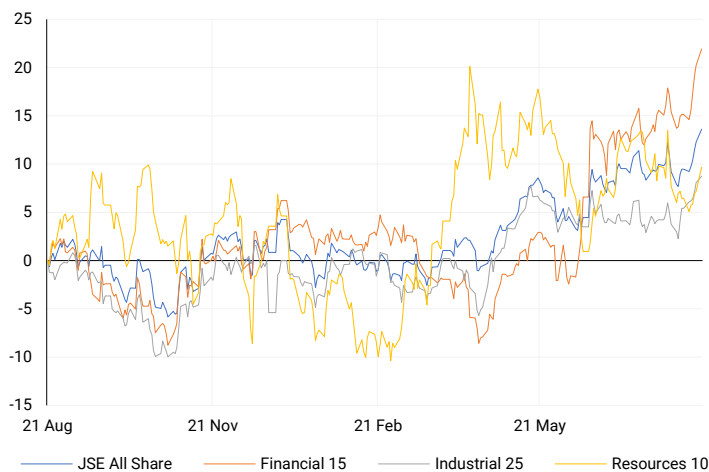
### JSE ALL SHARE

One-year



### LOCAL INDICES

Normalised percentage performances



### EXPECTED COMPANY REPORTING SCHEDULE

COMPANY	CODE	RELEASE	DATE
Sasol	SOL	Final	20 Aug '24
Spur	SUR	Final	22 Aug '24
Gold Fields	GFI	Interim	23 Aug '24
BHP	BHG	Final	27 Aug '24
Sibanye Stillwater	SSW	Interim	29 Aug '24

### BANK AND OTHER SELECTE PREFERENCE SHARES

COMPANY	CODE	CLOSE	CLEAN YIELD	NEXT LDT (Est.)
Investec Limited	INPR	8850	11.24	Thu, 06 Jun '24
Standard Bank	SBPP	8900	11.15	Thu, 05 Sep '24
Absa	ABSP	79996	11.48	Thu, 12 Sep '24
Capitec	CPIP	10010	9.69	Thu, 19 Sep '24
Steinhoff	SHFF	9734	10.47	Thu, 17 Oct '24
Grindrod	GNDP	9001	12.22	Thu, 19 Sep '24
Netcare	NTCP	8200	11.82	Thu, 31 Oct '24
Discovery	DSBP	9610	11.91	Thu, 19 Sep '24
Invicta	IVTP	---	13.41	Thu, 27 Jun '24

### LOCAL SENS ANNOUNCEMENTS

#### SELECTED RELEASE

##### ABSA BANK LIMITED – Unaudited consolidated interim results

For the period ending 30 June 2024, the company's total income rose slightly by 1% to R32 914 million, while the cost-to-income ratio increased to 62.2% from 59.0% in 2023. Net asset value per share grew by 3% to 20 828 cents, although the net interest margin decreased slightly to 3.56%. Return on equity dropped to 6.9% from 8.7% the previous year. Gross loans and advances fell by 5% to R1 039.8 billion, while deposits increased by 6% to R1 135.4 billion. The risk profile saw a rise in Stage 3 loans to 6.04%, and the liquidity coverage ratio decreased to 131.2%. The Common Equity Tier 1 ratio also declined to 11.8% from 13.0% in 2023.

ABG | 4.96% OPEN | 16300c HIGH | 16663c LOW | 16254c CLOSE | 16558c TIME | 16:52

##### THUNGELA RESOURCES LIMITED – Interim results

For the period ending 30 June 2024, the company reported a 17% increase in revenue to R16,752 million. However, profit for the period declined significantly by 61% to R1,186 million. Earnings per share and headline earnings per share both dropped by 58% to 952 cents. The dividend per share saw a sharp 80% decrease to 200 cents. Adjusted EBITDA fell by 51% to R2,146 million, with the adjusted EBITDA margin contracting by 18 percentage points to 13%. Adjusted operating free cash flow plummeted by 78% to R936 million, and net cash decreased by 51% to R6,683 million. Despite these declines, capital expenditure increased by 73% to R1,541 million.

TGA | -2.10% OPEN | 12600c HIGH | 12950c LOW | 12080c CLOSE | 12237c TIME | 08:00

##### MTN GROUP LIMITED – Reviewed interim financial results

In the first half of 2024, the company faced significant financial challenges, with group service revenue dropping by 20.8% to R85.3 billion and EBITDA decreasing by 41.2% to R29.0 billion. The EBITDA margin also fell sharply by 11.6 percentage points to 32.0%. Basic earnings per share (EPS) plunged by 278.6% to -409 cents, and headline EPS dropped by 198.5% to -256 cents. Despite these declines, total subscribers grew slightly by 0.8% to 288 million. No interim dividend was declared, mirroring the previous year's decision.

MTN | 1.84% OPEN | 8851c HIGH | 9083c LOW | 8673c CLOSE | 9028c TIME | 07:05

**LOCAL EQUITIES | JSE MID CAP COMPANIES** (Cents Per Share)

COMPANY	CODE	CLOSE	PREVIOUS	1D%	1M%	YTD%
Aspen Pharmacare Hldgs Ltd	APN	23250	22987	1.14	0.00	14.25
African Rainbow Min Ltd	ARI	19079	18418	3.59	-12.54	-4.61
AVI Ltd	AVI	10042	9900	1.43	3.91	22.36
Barloworld Ltd	BAW	9388	9244	1.56	9.81	18.84
Bidvest Ltd	BVT	28582	28352	0.81	6.06	13.29
Bytes Technology Grp PLC	BYI	11059	10902	1.44	-3.83	-22.78
Capital&Counties Prop plc	CCO	3384	3368	0.48	-3.67	4.12
Clicks Group Ltd	CLS	35600	35653	-0.15	6.20	9.30
Dis-Chem Pharmacies Ltd	DCP	3682	3620	1.71	6.66	19.97
Exxaro Resources Ltd	EXX	16735	16980	-1.44	-12.59	-18.16
Fortress Real Est INV B	FFB	1744	1783	-2.19	4.74	21.45
Growthpoint Prop Ltd	GRT	1350	1348	0.15	13.07	15.58
Harmony GM Co Ltd	HAR	19282	18485	4.31	7.91	61.23
Hammerson plc	HMN	660	658	0.30	-3.65	-2.94
Investec Ltd	INL	13733	13684	0.36	0.78	9.35
Investec plc	INP	13780	13696	0.61	0.58	9.41
Italtile Ltd	ITE	1252	1229	1.87	7.93	11.79
Life Healthc Grp Hldgs Ltd	LHC	1387	1339	3.58	9.99	-24.50
MultiChoice Group Ltd	MCG	10970	10962	0.07	2.05	35.40
Montauk Renewables Inc	MKR	8169	8076	1.15	-22.20	-52.51
Mr Price Group Ltd	MRP	23277	22804	2.07	14.50	48.44
Momentum Met Hldgs Ltd	MTM	2723	2735	-0.44	19.38	24.39
Ninety One Plc	N91	3880	3887	-0.18	-2.00	-10.02
Nedbank Group Ltd	NED	29704	29501	0.69	15.78	37.37
Northam Platinum Hldgs Ltd	NPH	12585	12326	2.10	-1.34	-10.38
NEPI Rockcastle N.V.	NRP	13912	14053	-1.00	6.59	10.08
Netcare Limited	NTC	1350	1322	2.12	13.35	-5.20
Ninety One Limited	NY1	3815	3833	-0.47	-1.70	-11.22
Old Mutual Limited	OMU	1238	1229	0.73	3.34	-5.21
OUTsurance Group Ltd	OUT	4854	4766	1.85	2.21	15.02
Pick n Pay Stores Ltd	PIK	2360	2307	2.30	1.29	1.42
Pepkor Holdings Ltd	PPH	2126	2116	0.47	8.08	8.30
Quilter Plc	QLT	3330	3336	-0.18	14.95	37.15
Redefine Properties Ltd	RDF	447	448	-0.22	7.97	16.10
Remgro Ltd	REM	14388	14010	2.70	7.70	-11.45
Resilient REIT Limited	RES	5300	5360	-1.12	9.89	19.67
Reinet Investments S.C.A	RNI	46854	46888	-0.07	3.79	0.50
Sappi Ltd	SAP	4509	4477	0.71	-12.79	2.01
Santam Limited	SNT	35165	35380	-0.61	5.88	22.71
The Spar Group Ltd	SPP	12612	12600	0.10	4.68	6.97
Sirius Real Estate Ltd	SRE	2230	2228	0.09	0.45	0.68
Tiger Brands Ltd	TBS	22745	22491	1.13	3.23	13.00
Transaction Capital Ltd	TCP	295	287	2.79	4.61	-63.03
The Foschini Group Limited	TFG	14077	13706	2.71	5.52	26.87
Thungela Resources Ltd	TGA	12237	12500	-2.10	7.34	-20.44
Telkom SA SOC Ltd	TKG	2474	2398	3.17	9.47	-16.81
Truworths Int Ltd	TRU	9716	9591	1.30	10.72	30.68
Woolworths Holdings Ltd	WHL	6565	6478	1.34	11.23	-9.07
Zeda Limited	ZZD	1250	1239	0.89	7.02	-1.96

**LOCAL EQUITIES | JSE SMALL CAP COMPANIES** (Cents Per Share)

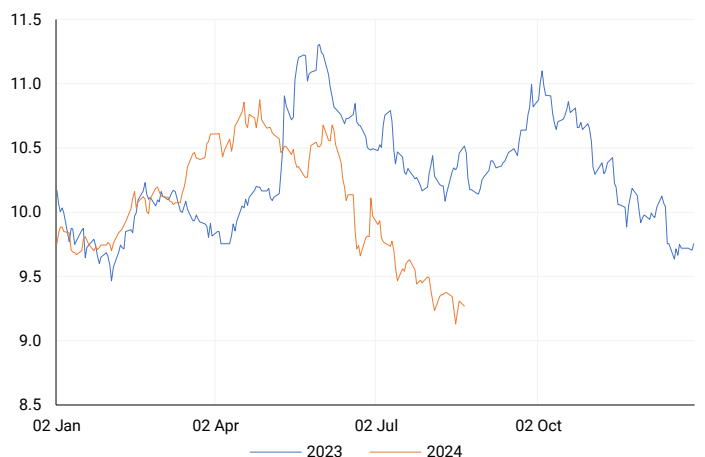
COMPANY	CODE	CLOSE	PREVIOUS	1D%	1M%	YTD%
ArcelorMittal SA Limited	ACL	123	124	-0.81	-8.89	-25.00
ADVTECH Ltd	ADH	3093	3050	1.41	3.17	26.04
Altron Limited A	AEL	1726	1725	0.06	10.57	68.39
AECI Limited	AFE	10652	10700	-0.45	-0.36	-2.89
Alexander Forbes Grp Hldgs	AFH	695	684	1.61	3.73	5.30
Afrimat Limited	AFT	6361	6300	0.97	-6.50	0.97
African Rainbow Cap Inv	AIL	615	615	0.00	-3.30	25.77
Adcock Ingram Hldgs Ltd	AIP	5748	5699	0.86	-2.94	-4.36
Astral Foods Ltd	ARL	17297	17190	0.62	5.32	18.01
Attacq Limited	ATT	1112	1125	-1.16	4.81	20.61
Brait PLC	BAT	88	88	0.00	28.90	-51.65
Blue Label Telecoms Ltd	BLU	438	430	1.86	2.10	12.89
Burststone Group	BTN	800	807	-0.87	3.23	0.00
Coronation Fund Mngrs Ld	CML	3900	3850	1.30	3.23	25.16
Curro Holdings Limited	COH	1227	1207	1.66	1.57	5.32
Cashbuild Ltd	CSB	16615	15417	7.77	-1.83	-0.47
DRD Gold Ltd	DRD	1736	1727	0.52	-3.93	10.08
Datatec Ltd	DTC	3502	3506	-0.11	-3.31	-13.53
Emira Property Fund Ltd	EMI	1063	1090	-2.48	-2.12	24.33
Equites Prop Fund Ltd	EQU	1341	1344	-0.22	2.52	-3.87
Famous Brands Ltd	FBR	5700	5605	1.69	9.09	-1.61
Fairvest Limited B	FTB	423	429	-1.40	8.46	22.97
Grindrod Ltd	GND	1566	1550	1.03	0.06	36.65
Hosken Cons Inv Ltd	HCI	18114	18031	0.46	-3.70	-10.59
Hudaco Industries Ltd	HDC	18043	18050	-0.04	2.23	12.33
Hyprop Inv Ltd	HYP	3525	3518	0.20	12.51	13.31
JSE Ltd	JSE	10968	10873	0.87	9.06	18.65
KAP Industrial Hldgs Ltd	KAP	308	309	-0.32	4.76	17.56
Karooooo Ltd	KRO	65008	66800	-2.68	1.58	36.86
PSG Konsult Limited	KST	1662	1679	-1.01	-3.48	8.27
Libstar Holdings Ltd	LBR	400	400	0.00	2.56	14.29
Lighthouse Properties plc	LTE	819	830	-1.33	4.20	11.43
Industrials REIT Limited	MLI	1.45	1.4	3.57	20.83	107.14
MAS P.L.C	MSP	1765	1760	0.28	-1.12	1.96
Metair Investments Ltd	MTA	1365	1370	-0.36	-2.22	-23.10
Motus Holdings Ltd	MTH	11161	11050	1.00	12.19	9.96
Murray & Roberts Hldgs	MUR	298	290	2.76	13.74	100.00
Oceana Group Ltd	OCE	7083	7010	1.04	5.31	0.23
Omnia Holdings Ltd	OMN	6261	5995	4.44	-6.55	-4.22
Pan African Resource plc	PAN	683	683	0.00	8.59	66.99
PPC Limited	PPC	400	401	-0.25	10.80	0.25
Raubex Group Ltd	RBX	4435	4343	2.12	-0.34	59.99
RFG Holdings Limited	RFG	1549	1570	-1.34	3.96	14.74
Reunert Ltd	RLO	7519	7413	1.43	4.79	25.44
SA Corp Real Estate Ltd	SAC	271	277	-2.17	0.37	16.81
Super Group Ltd	SPG	2662	2605	2.19	-9.55	-10.52
Stor-Age Prop REIT Ltd	SSS	1390	1419	-2.04	5.54	6.43
Southern Sun LTD	SSU	616	620	-0.65	4.41	17.33
Sun International Ltd	SUI	3964	3968	-0.10	9.05	-3.32
Tharisa plc	THA	1880	1900	-1.05	-3.09	24.42
Tsogo Sun Gaming Ltd	TSG	1177	1150	2.35	3.25	-3.92
Vukile Property Fund Ltd	VKE	1695	1725	-1.74	3.61	20.04
Wilson Bayly Hlm-Ovc Ltd	WBO	18486	18498	-0.06	4.83	42.13

**10-YEAR BOND YIELD | SELECTED ITEMS** (Basis Point Change)

REGION	YIELD	1D	1M	1Y
United States	3.87%	-1	-36	--
United Kingdom	3.92%	0	-20	-75
Germany	2.24%	0	-22	-38
Japan	0.86%	0	-16	--
South African 10Y	9.28%	-4	-29	-126

**SOUTH AFRICAN 10-YEAR**

2023 vs 2024 to date

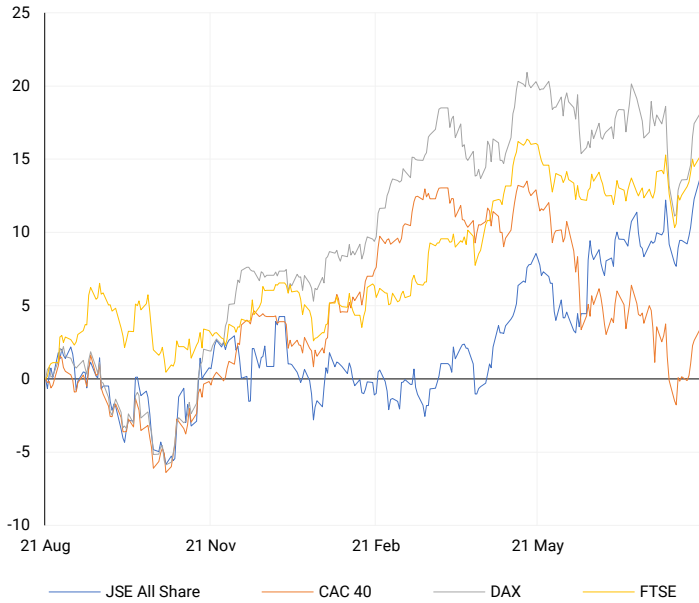


**GLOBAL INTEREST RATES | SELECTED ITEMS**

REGION	DATE CHANGED	CURRENT RATE
United States	Wed, 26 Jul '23	5.25%-5.50%
United Kingdom	Thu, 03 Aug '23	5.25%
European	Thu, 27 Jul '23	4.25%
SA Repo Rate	Thu, 25 May '23	8.25%
SA Prime Rate	Thu, 25 May '23	11.75%

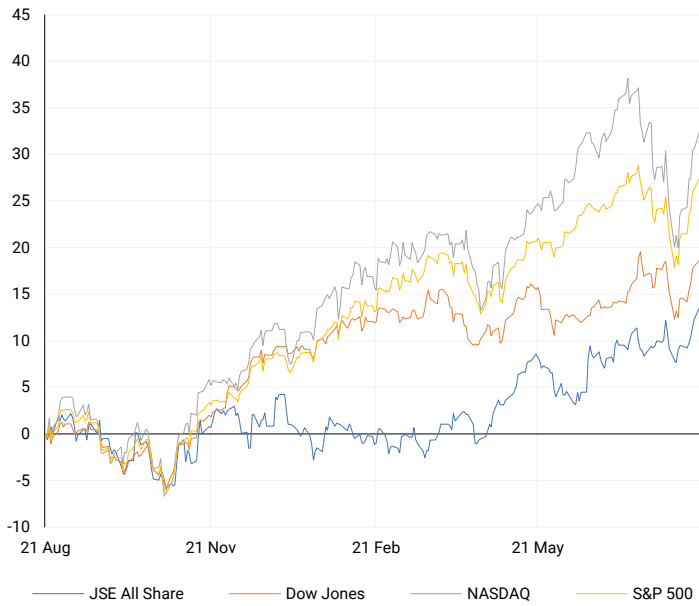
## EUROPEAN INDICES

Normalised percentage performances



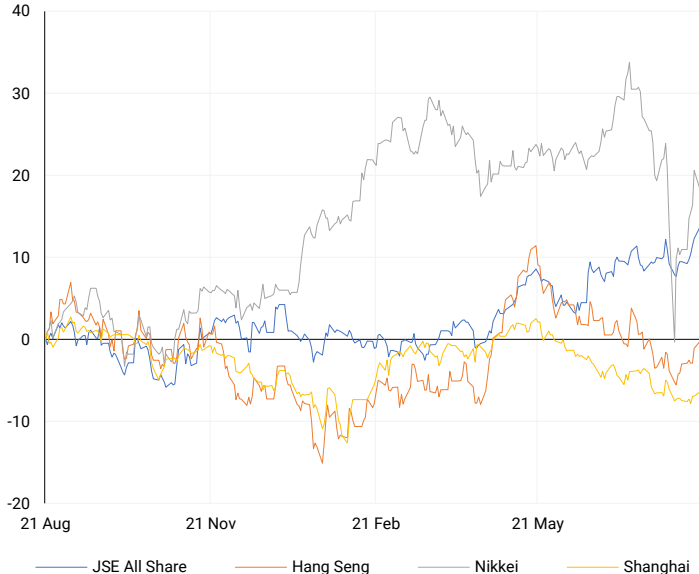
## AMERICAN INDICES

Normalised percentage performances



## ASIAN INDICES

Normalised percentage performances



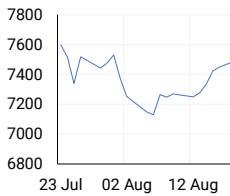
## EUROPEAN MARKET SUMMARY

### SELECTED ITEMS

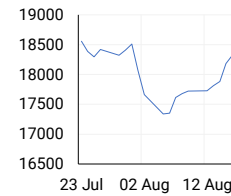
European stocks closed higher on Monday, building on last week's global market rally. However, defence stocks dipped following reports that Germany's finance ministry might not approve additional military aid for Ukraine due to budget constraints. Investors are now turning their attention to a busy week ahead, with key economic data releases, including eurozone inflation and PMI figures, expected to influence market sentiment.

EUROPEAN INDICES	CLOSE	PREVIOUS	1D%	5D%	1M%	YTD%
CAC 40	7502.01	7449.70	0.70	3.47	-0.43	-0.55
DAX 30	18421.69	18322.40	0.54	3.92	1.37	9.97
Eurostoxx 50	4873.70	4839.10	0.72	4.22	1.00	7.79
FTSE	8356.94	8311.41	0.55	1.79	2.47	8.07

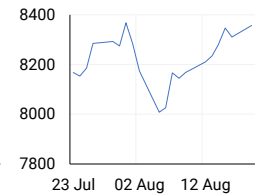
### CAC 40



### DAX



### FTSE



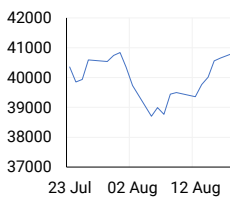
## AMERICAN MARKET SUMMARY

### SELECTED ITEMS

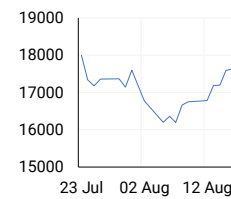
U.S. stocks advanced on Monday, continuing their strong recovery with the S&P 500 and Nasdaq marking their eighth consecutive day of gains, the longest streak of 2024. Investors are now focused on the Democratic National Convention and the upcoming Jackson Hole Economic Symposium, where Fed Chair Jerome Powell's remarks will be closely watched for signals on future interest rate cuts. Recent data showing resilient consumer spending has fuelled expectations that the Federal Reserve may lower interest rates by 25 basis points at its September meeting.

AMERICAN INDICES	CLOSE	PREVIOUS	1D%	5D%	1M%	YTD%
Dow Jones	40896.53	40659.76	0.58	3.91	1.51	8.51
Nasdaq	17876.77	17631.72	1.39	6.53	0.85	19.09
S&P 500	5608.25	5554.25	0.97	4.94	1.88	17.58
US VIX	14.65	14.80	-1.01	-29.26	-11.32	17.67

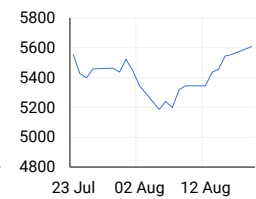
### DOW JONES



### NASDAQ



### S&P 500



## ASIAN MARKET SUMMARY

### SELECTED ITEMS

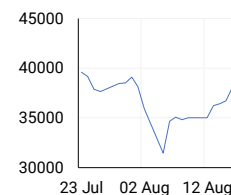
Asia-Pacific markets mostly rose this morning, buoyed by Wall Street's rally and the release of key economic data from China. China's decision to maintain its loan prime rates at 3.35% for the one-year LPR and 3.85% for the five-year LPR aligned with economists' expectations. Investors are also anticipating Bank of Japan Governor Kazuo Ueda's parliamentary address on Friday regarding last month's interest rate hike. In South Korea, the Kospi and Kosdaq indexes advanced, although consumer sentiment in August dipped to 100.8 from a two-year high.

ASIAN INDICES	CLOSE	PREVIOUS	1D%	5D%	1M%	YTD%
Hang Seng	17569.57	17430.16	0.80	2.68	0.87	3.06
Nikkei 225	37388.62	38062.67	-1.77	6.75	-6.68	11.73
Shanghai	2893.67	2879.43	0.49	1.24	-2.97	-2.73

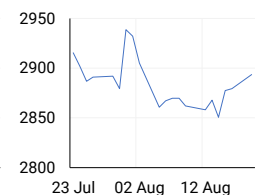
### HANG SENG



### NIKKEI



### SHANGHAI



## COMMODITIES MARKET SUMMARY

### SELECTED ITEMS

Gold prices remained above the \$2,500 mark this morning, supported by a weaker U.S. dollar and lower Treasury yields as traders looked ahead to the Federal Reserve's policy meeting minutes for hints on upcoming interest rate cuts. Meanwhile, oil prices dipped slightly as Israel agreed to a proposal aimed at resolving issues hindering a ceasefire in Gaza, alleviating concerns about potential supply disruptions in the Middle East.

COMMODITY	LAST	CLOSE	% CHG	1D%	5D%	YTD%
Brent Crude	77.06	77.77	-0.91	-2.37	-5.11	0.90
Gold	2501.60	2504.22	-0.10	-0.15	1.29	21.39
Palladium	926.26	935.82	-1.02	-1.91	1.62	-14.71
Platinum	960.31	960.70	-0.04	0.34	1.79	-2.69
Silver	29.34	29.45	-0.37	1.48	5.33	23.80

## BRENT CRUDE

One-year



## PLATINUM

One-year



## GOLD

One-year



CURRENCY PAIR	LAST	CLOSE	% CHG	1D%	5D%	YTD%
USDZAR	17.74	17.70	0.21	-1.14	-3.09	-3.39
GBPZAR	23.03	23.00	0.12	-0.55	-1.29	-1.27
EURZAR	19.65	19.63	0.14	-0.40	-1.60	-2.79
AUDZAR	11.92	11.92	-0.01	0.02	-0.81	-4.33
EURUSD	1.11	1.11	-0.07	0.53	1.41	0.43
USDJPY	146.90	146.59	0.21	-0.68	-0.42	3.94
GBPUSD	1.30	1.30	-0.10	0.36	1.74	2.05
USDCHF	0.86	0.86	-0.09	-0.38	-0.28	2.52

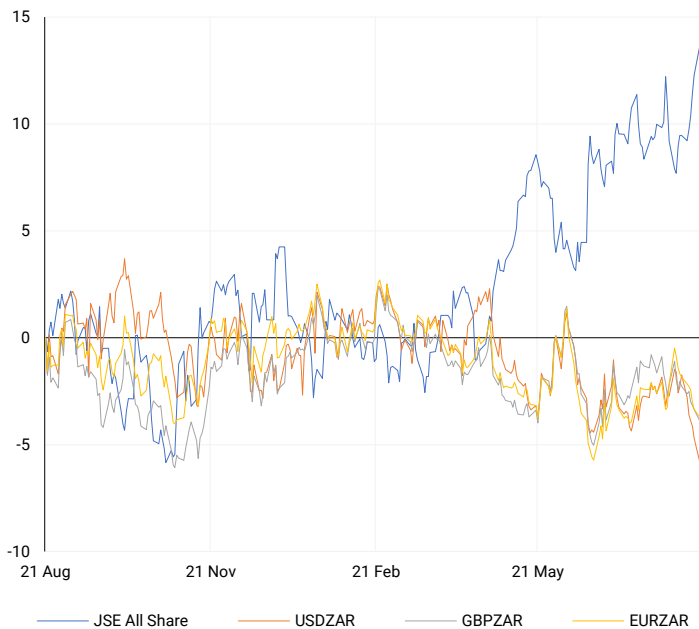
## CURRENCY MARKET SUMMARY

### SELECTED ITEMS

The South African rand strengthened to its highest level in nearly 13 months on Monday, as investors awaited domestic inflation data set to be released on Wednesday, which could offer insights into the country's future interest rate trajectory. The U.S. dollar hovered near a seven-month low this morning, as traders bet that the Federal Reserve will begin cutting interest rates as early as next month. Market participants are now closely watching for comments from Federal Reserve Chair Jerome Powell, scheduled for Friday, which could provide further guidance on the central bank's monetary policy direction.

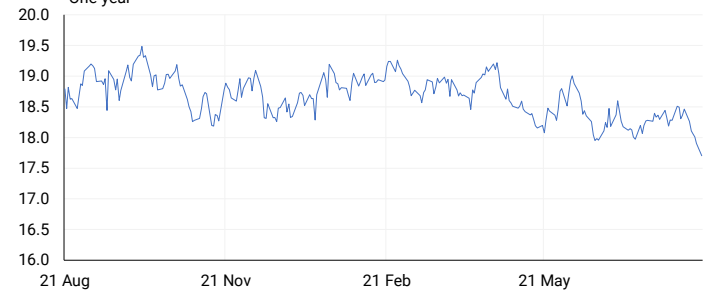
## CURRENCY PAIRS vs JSE ALL SHARE

Normalised percentage performances



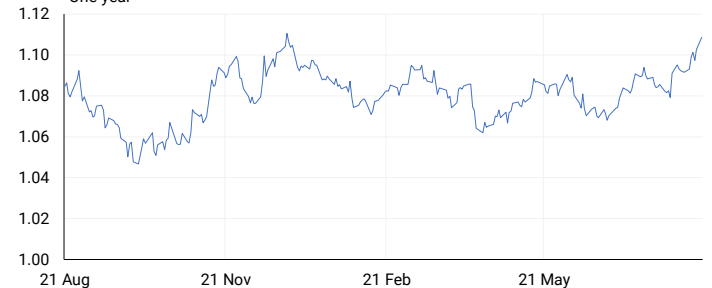
## USDZAR

One-year



## EURUSD

One-year



SOURCES | JSE, IRESS, MONEYWEB, CNBC, BBC, CNN

**Disclaimer:** This note is prepared for Sanlam Private Wealth (Pty) Ltd, by K2013143132 (Pty) Ltd trading as ThompsonGreen. ThompsonGreen is an independent company contracted to Sanlam Private Wealth (Pty) Ltd. The views expressed in this note are those of ThompsonGreen and/or its analysts and not necessarily the views of Sanlam Private Wealth (Pty) Ltd, Sanlam or any officer or agent thereof. K2013143132 (Pty) Ltd trading as ThompsonGreen is a research house and not a registered broker, financial adviser or financial service provider. Our editors and customer services teams also do not give personal investment advice. The information in this document is general advice only and may not be appropriate to your particular investment objectives, financial situation or particular needs. Before investing, or if you are in any doubt about your personal situation, you should seek professional advice from a stockbroker or independent financial adviser authorised by the Financial Sector Conduct Authority.