

GLOBAL OVERVIEW | SELECTED INDICES

SOUTH AFRICAN INDICES						
	CLOSE	PREVIOUS	1D%	5D%	1M%	YTD%
All Share	83783.30	83799.30	-0.02	3.49	4.83	8.96
Top 40	76637.97	76665.23	-0.04	3.52	5.08	8.71
Financial 15	20396.13	20518.22	-0.60	4.81	7.60	14.12
Industrial 25	112289.28	112781.98	-0.44	1.96	5.23	8.27
Resource 10	61224.51	60314.57	1.51	5.26	0.92	6.42
Mid Cap	88160.88	88076.69	0.10	4.06	5.07	9.63
Small Cap	82737.99	82312.53	0.52	3.28	3.99	14.13
Banks	12959.60	13021.53	-0.48	5.45	8.38	18.37
Retailers	7156.01	7225.13	-0.96	7.57	8.92	14.80
Property (J253) - TR	2204.21	2204.86	-0.03	1.84	6.82	18.27

AMERICAN INDICES						
	CLOSE	PREVIOUS	1D%	5D%	1M%	YTD%
Dow Jones	40834.97	40896.53	-0.15	2.69	1.36	8.35
Nasdaq	17816.94	17876.77	-0.33	3.66	0.51	18.69
S&P 500	5597.12	5608.25	-0.20	2.99	1.67	17.34
US VIX	15.88	14.65	8.40	-12.36	-3.87	27.55

EUROPEAN INDICES						
	CLOSE	PREVIOUS	1D%	5D%	1M%	YTD%
CAC 40	7485.73	7502.01	-0.22	2.88	-0.65	-0.76
DAX 30	18349.98	18421.69	-0.39	3.02	0.98	9.54
Eurostoxx 50	4859.00	4873.70	-0.30	3.56	0.69	7.46
FTSE	8273.32	8356.94	-1.00	0.46	1.44	6.98

ASIAN INDICES						
	CLOSE	PREVIOUS	1D%	5D%	1M%	YTD%
Hang Seng	17511.08	17569.57	-0.33	1.96	0.54	2.72
Nikkei 225	38062.92	37388.62	1.80	5.05	-4.99	13.74
Shanghai	2866.66	2893.67	-0.93	-0.04	-3.88	-3.64

EARLY MORNING MARKETS						
	LAST	CLOSE	% CHG	1D%	5D%	YTD%
TENCENT	372.60	370.40	0.59	-0.59	-2.17	27.64
BHP AUS	4080.00	4025.00	1.37	1.31	-1.23	-20.15

NOTE : 5D% and 1M% are rolling percentage moves

INTERNATIONAL ECONOMIC CALENDAR | SELECTED EVENTS

TIME	AREA	TODAY'S EVENTS & RELEASES	PERIOD	EXP.	PREV.
10:00	ZA	Inflation Rate m/m	Jul	0.30%	0.10%
10:00	ZA	Core Inflation Rate m/m	Jul	0.40%	0.40%
20:00	US	FOMC Meeting Minutes	---	---	---
---	---	---	---	---	---
---	---	---	---	---	---

TIME	AREA	PREVIOUS SESSION'S RELEASES	PERIOD	EXP.	ACT.
9:00	ZA	Leading Business Cycle Indicator m/m	Jun	0.60%	-0.40%
---	---	---	---	---	---
---	---	---	---	---	---
---	---	---	---	---	---
---	---	---	---	---	---

JSE ALL SHARE | BEST AND WORST ONE-DAY PERFORMERS

BEST ONE-DAY % PERFORMERS						
	CODE	CLOSE	1D%	5D%	YTD%	
Brait PLC	BAT	95	7.95	10.47	-47.80	
Karoo000 Ltd	KRO	67864	4.39	6.87	42.87	
Sappi Ltd	SAP	4707	4.39	5.56	6.49	
Harmony GM Co Ltd	HAR	20071	4.09	10.07	67.83	
DRD Gold Ltd	DRD	1807	4.09	4.94	14.58	
Pan African Resource plc	PAN	707	3.51	6.16	72.86	

WORST ONE-DAY % PERFORMERS						
	CODE	CLOSE	1D%	5D%	YTD%	
Sasol Limited	SOL	12863	-6.47	0.30	-30.58	
Metair Investments Ltd	MTA	1317	-3.52	5.36	-25.80	
Alexander Forbes Grp Hldgs	AFH	671	-3.45	2.29	1.67	
Remgro Ltd	REM	13945	-3.08	5.24	-14.17	
Pepkor Holdings Ltd	PPH	2072	-2.54	5.02	5.55	

DIVIDEND DATA

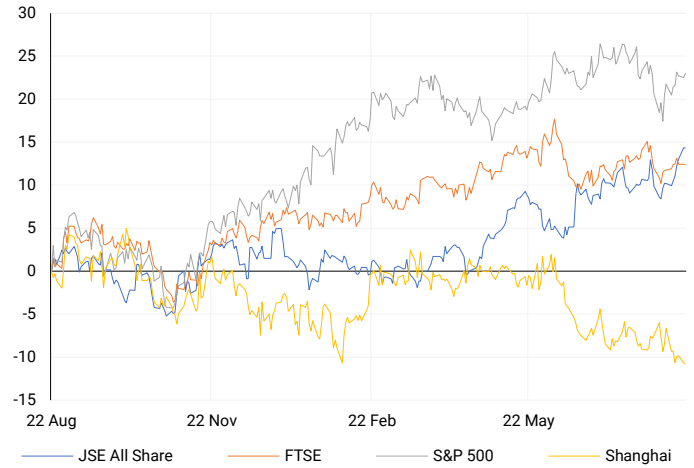
COMPANY	CODE	EXPECTED DIVIDEND	COMPANY	CODE	EXPECTED DIVIDEND
---	---	---	---	---	---
---	---	---	---	---	---
---	---	---	---	---	---
---	---	---	---	---	---
---	---	---	---	---	---

SOURCES | JSE, IRESS, MONEYWEB, CNBC, BBC, CNN

PLEASE SEE THE BOTTOM OF THE LAST PAGE FOR THE FULL DISCLAIMER

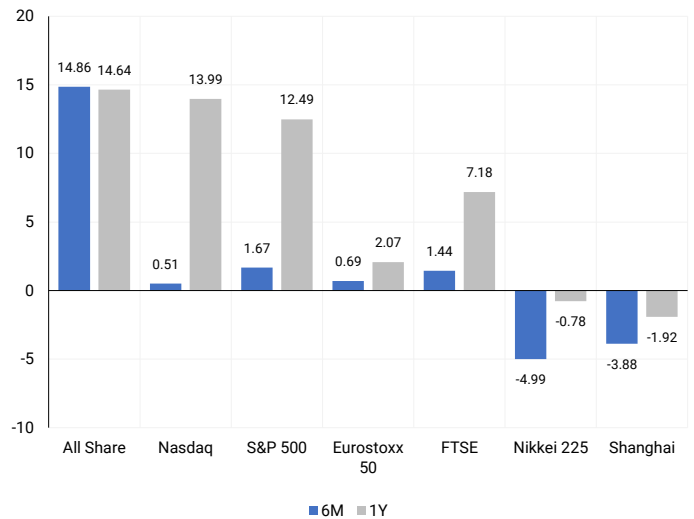
INTERNATIONAL INDICES

Normalised percentage performances - In rand terms



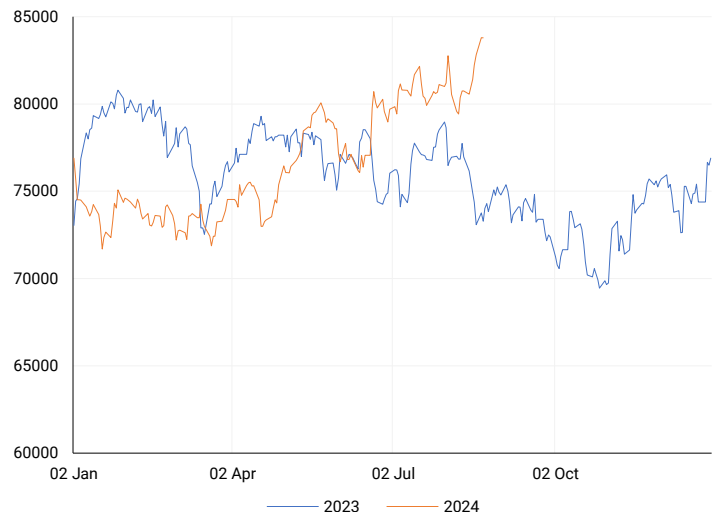
INTERNATIONAL INDICES

6-month & 1-year percentage performances



JSE ALL SHARE INDEX

2023 v 2024 to date



LOCAL EQUITIES | JSE LARGE CAP COMPANIES (Cents Per Share)

COMPANY	CLOSE	PREVIOUS	1D%	5D%	1M%	YTD%
Absa Group Limited	16422	16558	-0.82	8.08	5.47	0.31
Anglo American plc	52314	51681	1.22	1.39	-1.30	10.49
Anglo American Plat Ltd	71048	69040	2.91	14.96	16.29	-26.30
Anglogold Ashanti Ltd	57119	55737	2.48	3.63	10.84	61.62
Anheuser-Busch InBev SA NV	108023	108141	-0.11	-0.76	-2.28	-9.99
BHP Group Limited	47951	47990	-0.08	-0.88	-5.32	-24.30
BID Corporation Ltd	43064	43810	-1.70	0.46	-1.27	0.94
British American Tob plc	64442	64172	0.42	-1.22	6.52	19.00
Compagnie Fin Richemont	283112	277974	1.85	5.03	3.43	10.26
Capitec Bank Hldgs Ltd	288001	288000	0.00	3.92	6.65	42.13
Discovery Ltd	14931	15016	-0.57	5.15	9.14	3.92
Firststrand Ltd	8394	8460	-0.78	4.59	6.93	14.19
Gold Fields Ltd	31110	30100	3.36	13.06	3.08	12.00
Glencore plc	9558	9594	-0.38	1.67	-9.00	-14.39
Impala Platinum Hlgs Ltd	9033	8845	2.13	10.05	-0.98	-1.03
Kumba Iron Ore Ltd	36123	36362	-0.66	-6.94	-11.90	-41.24
Mondi plc	33973	34059	-0.25	2.48	-8.43	-6.41
MTN Group Ltd	8950	9028	-0.86	7.40	18.98	-22.51
Naspers Ltd -N-	362054	365012	-0.81	-1.97	5.37	15.75
Prosus N.V.	65446	65785	-0.52	-1.24	2.49	16.79
South32 Limited	3580	3549	0.87	0.42	-13.94	-15.15
Standard Bank Group Ltd	23601	23719	-0.50	8.76	12.71	13.41
Shoprite Holdings Ltd	30234	30751	-1.68	3.51	4.92	9.92
Sanlam Limited	8413	8515	-1.20	4.63	5.64	15.56
Sasol Limited	12863	13753	-6.47	0.30	-5.72	-30.58
Sibanye Stillwater Ltd	1973	1911	3.24	9.19	-2.76	-20.76
Vodacom Group Ltd	10800	10728	0.67	9.32	16.04	1.89

SOUTH AFRICAN MARKET SUMMARY

SELECTED ITEMS

On Tuesday, the Top-40 index saw little change as investors awaited South Africa's July inflation report, which could provide insight into the country's future interest rate path. A Reuters poll suggests the South African Reserve Bank might cut interest rates for the first time in over two years on September 19. Meanwhile, central bank data showed a 0.4% month-on-month decline in South Africa's leading indicator for June.

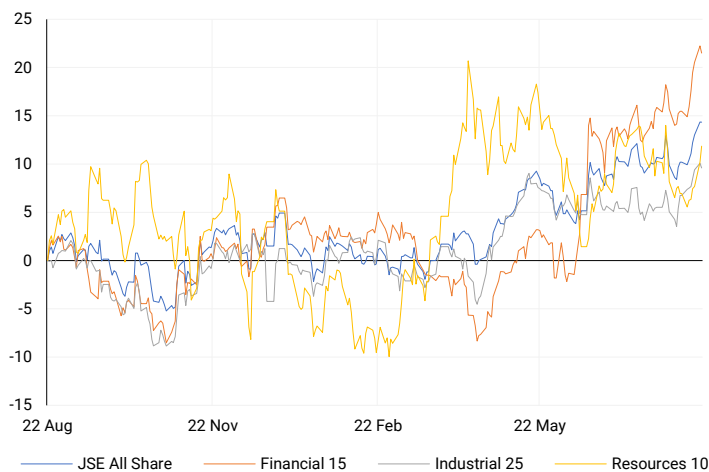
JSE ALL SHARE

One-year



LOCAL INDICES

Normalised percentage performances



LOCAL SENS ANNOUNCEMENTS

SELECTED RELEASE

SASOL LIMITED – Audited Financial Results

In 2024, the company experienced a significant financial downturn, reporting a loss before interest and tax (LBIT) of R27 305 million, compared to a profit of R21 520 million in 2023. Headline earnings dropped by 66% to R11 513 million, with basic earnings per share plummeting to a loss of R69.94 from a profit of R14.00 the previous year. Headline earnings per share also fell by 66% to R18.19. The interim dividend was reduced by 71% to R2.00 per share, and no final dividend was declared. Additionally, total assets decreased by 16%, while total equity declined by 27%.

SOL | -6.47% OPEN | 13215c HIGH | 13859c LOW | 12825c CLOSE | 12863c TIME | 07:10

AVENG LIMITED – Audited Consolidated Annual Financial Statements

The company reported strong financial improvements for the period, with revenue increasing to A\$3.1 billion (R37.5 billion) from A\$2.4 billion (R28.9 billion) in June 2023. Operating earnings rose to A\$34.5 million (R424 million) after a significant loss the previous year. Headline earnings also improved to A\$38.0 million (R466 million), recovering from a substantial loss. Basic earnings turned positive at A\$25.7 million (R315 million), with earnings per share reaching A\$20.0 cents (245 cents in Rands). The company's net cash position strengthened to A\$173.7 million (R2.1 billion), and it has a work backlog of A\$3.1 billion (R37.2 billion). Additionally, the company has completed a leadership transition and organizational restructuring and plans to pursue two distinct growth strategies following a strategic review.

AEG | 0.00% OPEN | 1000c HIGH | 1064c LOW | 1000c CLOSE | 1000c TIME | 17:35

HULAMIN LIMITED – Unaudited Consolidated Results

The company reported a decline in key financial metrics for 2024 compared to 2023. Revenue decreased by 6% to R6.97 billion, while operating profit fell by 8% to R433.7 million. Basic earnings per share dropped by 13% to 83 cents, and basic headline earnings per share declined by 17% to 79 cents. Additionally, basic normalized headline earnings per share saw a significant decrease of 38%, down to 43 cents.

HLM | -7.04% OPEN | 380c HIGH | 380c LOW | 367c CLOSE | 370c TIME | 07:05

EXPECTED COMPANY REPORTING SCHEDULE

COMPANY	CODE	RELEASE	DATE
Spur	SUR	Final	22 Aug '24
Gold Fields	GFI	Interim	23 Aug '24
BHP	BHG	Final	27 Aug '24
Sibanye Stillwater	SSW	Interim	29 Aug '24
Santam	SNT	Interim	29 Aug '24

BANK AND OTHER SELECTE PREFERENCE SHARES

COMPANY	CODE	CLOSE	CLEAN YIELD	NEXT LDT (Est.)
Investec Limited	INPR	8900	11.24	Thu, 06 Jun '24
Standard Bank	SBPP	9000	11.15	Thu, 05 Sep '24
Absa	ABSP	80106	11.48	Thu, 12 Sep '24
Capitec	CPIP	10010	9.69	Thu, 19 Sep '24
Steinhoff	SHFF	9734	10.47	Thu, 17 Oct '24
Grindrod	GNDP	9200	12.22	Thu, 19 Sep '24
Netcare	NTCP	8200	11.82	Thu, 31 Oct '24
Discovery	DSBP	9615	11.91	Thu, 19 Sep '24
Invicta	IVTP	---	13.41	Thu, 27 Jun '24

LOCAL EQUITIES | JSE MID CAP COMPANIES (Cents Per Share)

COMPANY	CODE	CLOSE	PREVIOUS	1D%	1M%	YTD%
Aspen Pharmacare Hldgs Ltd	APN	23748	23250	2.14	2.15	16.70
African Rainbow Min Ltd	ARI	19200	19079	0.63	-11.99	-4.00
AVI Ltd	AVI	10036	10042	-0.06	3.85	22.29
Barloworld Ltd	BAW	9380	9388	-0.09	9.72	18.73
Bidvest Ltd	BVT	28197	28582	-1.35	4.63	11.76
Bytes Technology Grp PLC	BYI	11139	11059	0.72	-3.14	-22.22
Capital&Counties Prop plc	CCO	3381	3384	-0.09	-3.76	4.03
Clicks Group Ltd	CLS	35614	35600	0.04	6.24	9.34
Dis-Chem Pharmacies Ltd	DCP	3706	3682	0.65	7.36	20.76
Exxaro Resources Ltd	EXX	16508	16735	-1.36	-13.77	-19.27
Fortress Real Est INV B	FFB	1760	1744	0.92	5.71	22.56
Growthpoint Prop Ltd	GRT	1336	1350	-1.04	11.89	14.38
Harmony GM Co Ltd	HAR	20071	19282	4.09	12.32	67.83
Hammerson plc	HMN	661	660	0.15	-3.50	-2.79
Investec Ltd	INL	13718	13733	-0.11	0.67	9.23
Investec plc	INP	13800	13780	0.15	0.73	9.57
Italtile Ltd	ITE	1255	1252	0.24	8.19	12.05
Life Healthc Grp Hldgs Ltd	LHC	1397	1387	0.72	10.79	-23.95
MultiChoice Group Ltd	MCG	10928	10970	-0.38	1.66	34.88
Montauk Renewables Inc	MKR	8120	8169	-0.60	-22.67	-52.79
Mr Price Group Ltd	MRP	23357	23277	0.34	14.89	48.95
Momentum Met Hldgs Ltd	MTM	2740	2723	0.62	20.12	25.17
Ninety One Plc	N91	3873	3880	-0.18	-2.17	-10.18
Nedbank Group Ltd	NED	29611	29704	-0.31	15.42	36.94
Northam Platinum Hldgs Ltd	NPH	12546	12585	-0.31	-1.65	-10.66
NEPI Rockcastle N.V.	NRP	13975	13912	0.45	7.07	10.58
Netcare Limited	NTC	1350	1350	0.00	13.35	-5.20
Ninety One Limited	NY1	3825	3815	0.26	-1.44	-10.98
Old Mutual Limited	OMU	1235	1238	-0.24	3.09	-5.44
OUTsurance Group Ltd	OUT	4814	4854	-0.82	1.37	14.08
Pick n Pay Stores Ltd	PIK	2361	2360	0.04	1.33	1.46
Pepkor Holdings Ltd	PPH	2072	2126	-2.54	5.34	5.55
Quilter Plc	QLT	3302	3330	-0.84	13.98	36.00
Redefine Properties Ltd	RDF	446	447	-0.22	7.73	15.84
Remgro Ltd	REM	13945	14388	-3.08	4.39	-14.17
Resilient REIT Limited	RES	5280	5300	-0.38	9.48	19.21
Reinet Investments S.C.A	RNI	46749	46854	-0.22	3.56	0.27
Sappi Ltd	SAP	4707	4509	4.39	-8.96	6.49
Santam Limited	SNT	35305	35165	0.40	6.30	23.20
The Spar Group Ltd	SPP	12587	12612	-0.20	4.47	6.76
Sirius Real Estate Ltd	SRE	2210	2230	-0.90	-0.45	-0.23
Tiger Brands Ltd	TBS	22670	22745	-0.33	2.89	12.62
Transaction Capital Ltd	TCP	290	295	-1.69	2.84	-63.66
The Foschini Group Limited	TFG	13898	14077	-1.27	4.18	25.25
Thungela Resources Ltd	TGA	12083	12237	-1.26	5.99	-21.44
Telkom SA SOC Ltd	TKG	2523	2474	1.98	11.64	-15.16
Truworths Int Ltd	TRU	9679	9716	-0.38	10.30	30.18
Woolworths Holdings Ltd	WHL	6449	6565	-1.77	9.27	-10.68
Zeda Limited	ZZD	1215	1250	-2.80	4.02	-4.71

LOCAL EQUITIES | JSE SMALL CAP COMPANIES (Cents Per Share)

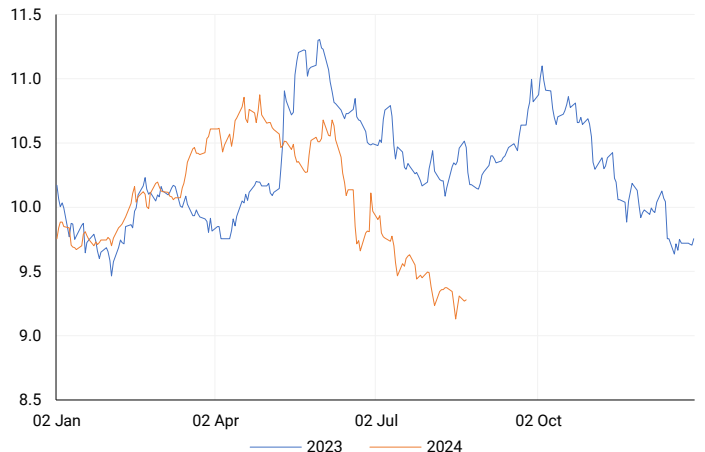
COMPANY	CODE	CLOSE	PREVIOUS	1D%	1M%	YTD%
ArcelorMittal SA Limited	ACL	121	123	-1.63	-10.37	-26.22
ADVTECH Ltd	ADH	3125	3093	1.03	4.24	27.34
Altron Limited A	AEL	1753	1726	1.56	12.30	71.02
AECI Limited	AFE	10652	10652	0.00	-0.36	-2.89
Alexander Forbes Grp Hldgs	AFH	671	695	-3.45	0.15	1.67
Afrimat Limited	AFT	6400	6361	0.61	-5.92	1.59
African Rainbow Cap Inv	AIL	616	615	0.16	-3.14	25.97
Adcock Ingram Hldgs Ltd	AIP	5856	5748	1.88	-1.11	-2.56
Astral Foods Ltd	ARL	17297	17297	0.00	5.32	18.01
Attacq Limited	ATT	1118	1112	0.54	5.37	21.26
Brait PLC	BAT	95	88	7.95	39.15	-47.80
Blue Label Telecoms Ltd	BLU	441	438	0.68	2.80	13.66
Burstone Group	BTN	800	800	0.00	3.23	0.00
Coronation Fund Mngrs Ld	CML	3900	3900	0.00	3.23	25.16
Curro Holdings Limited	COH	1247	1227	1.63	3.23	7.04
Cashbuild Ltd	CSB	16721	16615	0.64	-1.20	0.17
DRD Gold Ltd	DRD	1807	1736	4.09	0.00	14.58
Datatec Ltd	DTC	3600	3502	2.80	-0.61	-11.11
Emira Property Fund Ltd	EMI	1065	1063	0.19	-1.93	24.56
Equites Prop Fund Ltd	EQU	1341	1341	0.00	2.52	-3.87
Famous Brands Ltd	FBR	5700	5700	0.00	9.09	-1.61
Fairvest Limited B	FTB	415	423	-1.89	6.41	20.64
Grindrod Ltd	GND	1575	1566	0.57	0.64	37.43
Hosken Cons Inv Ltd	HCI	18010	18114	-0.57	-4.25	-11.11
Hudaco Industries Ltd	HDC	18140	18043	0.54	2.78	12.93
Hyprop Inv Ltd	HYP	3535	3525	0.28	12.83	13.63
JSE Ltd	JSE	10967	10968	-0.01	9.05	18.64
KAP Industrial Hldgs Ltd	KAP	316	308	2.60	7.48	20.61
Karooooo Ltd	KRO	67864	65008	4.39	6.04	42.87
PSG Konsult Limited	KST	1664	1662	0.12	-3.37	8.40
Libstar Holdings Ltd	LBR	415	400	3.75	6.41	18.57
Lighthouse Properties plc	LTE	827	819	0.98	5.22	12.52
Industrials REIT Limited	MLI	1.6	1.45	10.34	33.33	128.57
MAS P.L.C	MSP	1791	1765	1.47	0.34	3.47
Metair Investments Ltd	MTA	1317	1365	-3.52	-5.66	-25.80
Motus Holdings Ltd	MTH	11235	11161	0.66	12.94	10.69
Murray & Roberts Hldgs	MUR	301	298	1.01	14.89	102.01
Oceana Group Ltd	OCE	7054	7083	-0.41	4.88	-0.18
Omnia Holdings Ltd	OMN	6155	6261	-1.69	-8.13	-5.84
Pan African Resource plc	PAN	707	683	3.51	12.40	72.86
PPC Limited	PPC	397	400	-0.75	9.97	-0.50
Raubex Group Ltd	RBX	4457	4435	0.50	0.16	60.79
RFG Holdings Limited	RFG	1555	1549	0.39	4.36	15.19
Reunert Ltd	RLO	7500	7519	-0.25	4.53	25.13
SA Corp Real Estate Ltd	SAC	270	271	-0.37	0.00	16.38
Super Group Ltd	SPG	2631	2662	-1.16	-10.60	-11.56
Stor-Age Prop REIT Ltd	SSS	1384	1390	-0.43	5.09	5.97
Southern Sun LTD	SSU	610	616	-0.97	3.39	16.19
Sun International Ltd	SUI	4073	3964	2.75	12.05	-0.66
Tharisa plc	THA	1900	1880	1.06	-2.06	25.74
Tsogo Sun Gaming Ltd	TSG	1180	1177	0.25	3.51	-3.67
Vukile Property Fund Ltd	VKE	1688	1695	-0.41	3.18	19.55
Wilson Bayly Hlm-Ovc Ltd	WBO	18763	18486	1.50	6.40	44.26

10-YEAR BOND YIELD | SELECTED ITEMS (Basis Point Change)

REGION	YIELD	1D	1M	1Y
United States	3.81%	-6	-43	--
United Kingdom	3.91%	-1	-21	-76
Germany	2.21%	-3	-25	-41
Japan	0.86%	-1	-17	--
South African 10Y	9.29%	1	-28	-125

SOUTH AFRICAN 10-YEAR

2023 vs 2024 to date

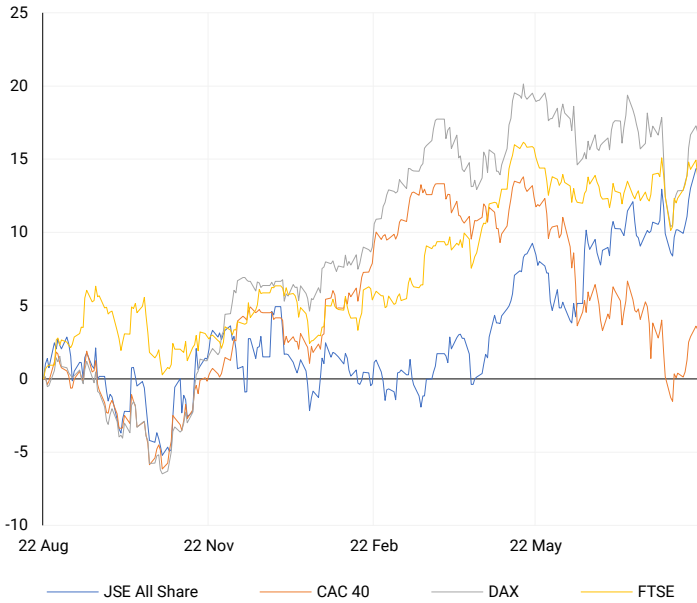


GLOBAL INTEREST RATES | SELECTED ITEMS

REGION	DATE CHANGED	CURRENT RATE
United States	Wed, 26 Jul '23	5.25%-5.50%
United Kingdom	Thu, 03 Aug '23	5.25%
European	Thu, 27 Jul '23	4.25%
SA Repo Rate	Thu, 25 May '23	8.25%
SA Prime Rate	Thu, 25 May '23	11.75%

EUROPEAN INDICES

Normalised percentage performances



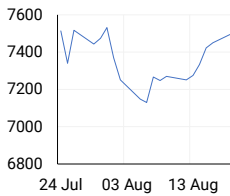
EUROPEAN MARKET SUMMARY

SELECTED ITEMS

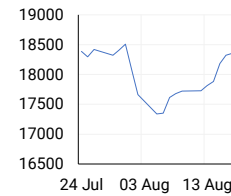
European stocks ended lower on Tuesday as concerns over the economic outlook persisted. Sweden's Riksbank cut interest rates by 25 basis points to 3.5% and indicated the possibility of two to three more rate cuts this year. Meanwhile, Eurozone inflation slightly increased to 2.6% in July, up from 2.5% in June, according to new data from the European Union's statistical office. Germany's producer price index also saw a decline, falling 0.8% year-on-year in July, as reported by the Federal Statistical Office.

EUROPEAN INDICES	CLOSE	PREVIOUS	1D%	5D%	1M%	YTD%
CAC 40	7485.73	7502.01	-0.22	2.88	-0.65	-0.76
DAX 30	18349.98	18421.69	-0.39	3.02	0.98	9.54
Eurostoxx 50	4859.00	4873.70	-0.30	3.56	0.69	7.46
FTSE	8273.32	8356.94	-1.00	0.46	1.44	6.98

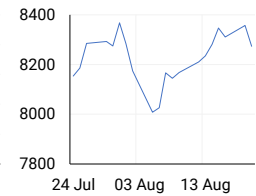
CAC 40



DAX

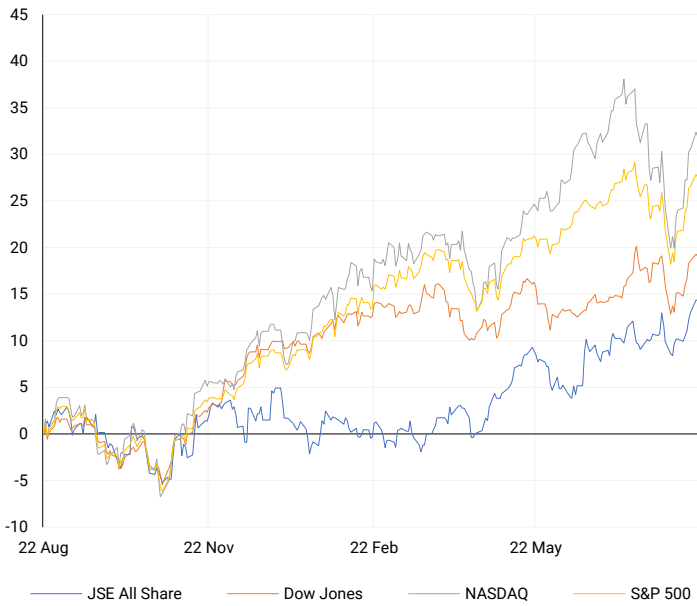


FTSE



AMERICAN INDICES

Normalised percentage performances



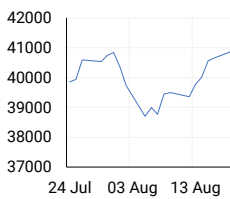
AMERICAN MARKET SUMMARY

SELECTED ITEMS

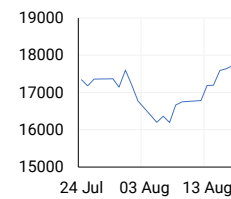
U.S. stocks ended slightly lower on Tuesday, snapping an eight-day winning streak as investors remained cautious ahead of the Jackson Hole Economic Symposium starting Thursday. The S&P 500 and Nasdaq both saw their longest rally since late last year but paused amid a lack of significant market drivers. Market attention is now focused on remarks from Federal Reserve Chair Jerome Powell on Friday, which could provide insights into future rate cuts. Additionally, the Labor Department's upcoming employment data revisions today might influence the Fed's policy decisions.

AMERICAN INDICES	CLOSE	PREVIOUS	1D%	5D%	1M%	YTD%
Dow Jones	40834.97	40896.53	-0.15	2.69	1.36	8.35
Nasdaq	17816.94	17876.77	-0.33	3.66	0.51	18.69
S&P 500	5597.12	5608.25	-0.20	2.99	1.67	17.34
US VIX	15.88	14.65	8.40	-12.36	-3.87	27.55

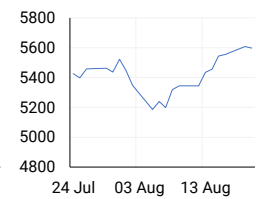
DOW JONES



NASDAQ

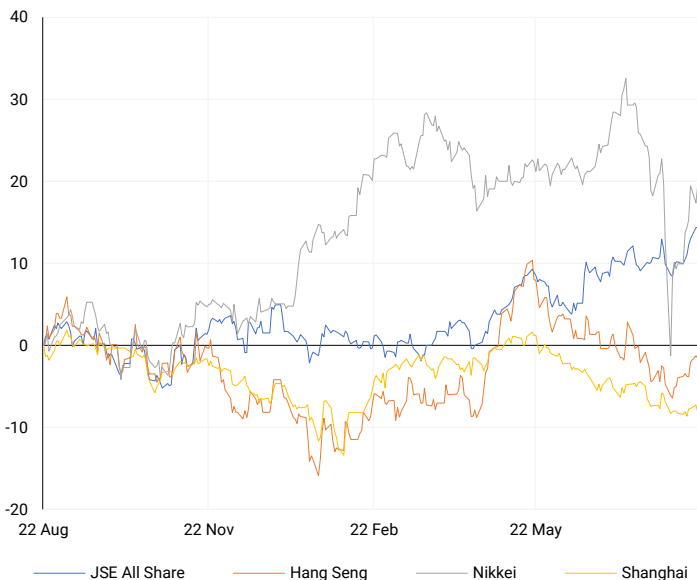


S&P 500



ASIAN INDICES

Normalised percentage performances



ASIAN MARKET SUMMARY

SELECTED ITEMS

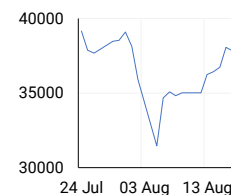
Asia-Pacific markets declined on this morning as Japan reported mixed trade data for July. Exports increased by 10.3% year-on-year, falling short of the 11.4% growth forecasted by economists, while imports rose by 16.6%, exceeding the expected 14.9% growth. This led to a larger-than-anticipated trade deficit of 621.84 billion yen (\$4.28 billion), compared to the 330.7 billion yen deficit forecast. The data comes just before the Bank of Japan's recent interest rate hike, which significantly strengthened the yen.

ASIAN INDICES	CLOSE	PREVIOUS	1D%	5D%	1M%	YTD%
Hang Seng	17511.08	17569.57	-0.33	1.96	0.54	2.72
Nikkei 225	38062.92	37388.62	1.80	5.05	-4.99	13.74
Shanghai	2866.66	2893.67	-0.93	-0.04	-3.88	-3.64

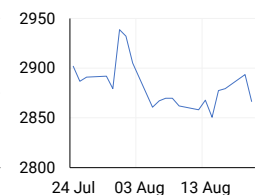
HANG SENG



NIKKEI



SHANGHAI



COMMODITIES MARKET SUMMARY

SELECTED ITEMS

Gold prices dipped below record highs this morning, cooling off after a recent rally driven by Western fund inflows and optimism about U.S. interest rate cuts. Investors are now focused on the upcoming release of the Federal Reserve's meeting minutes for further insight into the potential scale of these cuts. Meanwhile, oil prices declined due to reports of rising U.S. crude inventories and signs of easing tensions in the Middle East following diplomatic efforts in the region.

COMMODITY	LAST	CLOSE	% CHG	1D%	5D%	YTD%
Brent Crude	77.09	77.17	-0.10	-0.77	-4.68	0.12
Gold	2516.07	2514.03	0.08	0.39	1.98	21.86
Palladium	928.38	930.00	-0.17	-0.62	-1.09	-15.24
Platinum	952.41	952.50	-0.01	-0.85	1.14	-3.52
Silver	29.50	29.43	0.24	-0.07	5.67	23.72

BRENT CRUDE

One-year



PLATINUM

One-year



GOLD

One-year



CURRENCY PAIR	LAST	CLOSE	% CHG	1D%	5D%	YTD%
USDZAR	17.81	17.81	0.03	0.60	-1.66	-2.81
GBPZAR	23.20	23.22	-0.08	0.97	-0.45	-0.32
EURZAR	19.81	19.83	-0.13	1.06	-0.41	-1.77
AUDZAR	12.01	12.01	0.00	0.81	-0.05	-3.55
EURUSD	1.11	1.11	-0.10	0.40	1.25	0.84
USDJPY	145.67	145.26	0.28	-0.91	-1.06	3.00
GBPUSD	1.30	1.30	-0.07	0.33	1.33	2.38
USDCHF	0.85	0.85	0.01	-1.01	-1.22	1.49

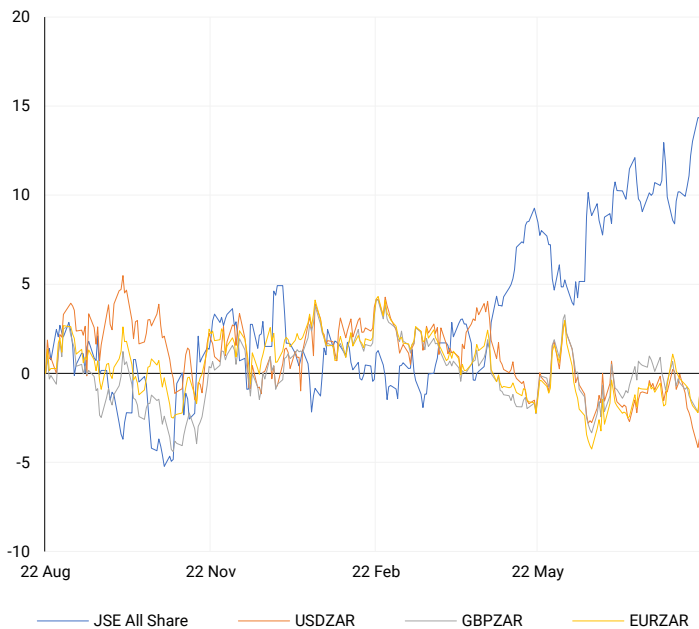
CURRENCY MARKET SUMMARY

SELECTED ITEMS

The South African rand weakened on Tuesday as markets looked ahead to upcoming domestic inflation data for clues on future interest rate decisions, both locally and in the U.S. Meanwhile, the U.S. dollar slipped to its lowest level of the year against the euro this morning, as traders anticipated key revisions to U.S. payroll data and prepared for Federal Reserve Chair Jerome Powell's speech later in the week.

CURRENCY PAIRS vs JSE ALL SHARE

Normalised percentage performances



USDZAR

One-year



EURUSD

One-year



SOURCES | JSE, IRESS, MONEYWEB, CNBC, BBC, CNN

Disclaimer: This note is prepared for Sanlam Private Wealth (Pty) Ltd, by K2013143132 (Pty) Ltd trading as ThompsonGreen. ThompsonGreen is an independent company contracted to Sanlam Private Wealth (Pty) Ltd. The views expressed in this note are those of ThompsonGreen and/or its analysts and not necessarily the views of Sanlam Private Wealth (Pty) Ltd, Sanlam or any officer or agent thereof. K2013143132 (Pty) Ltd trading as ThompsonGreen is a research house and not a registered broker, financial adviser or financial service provider. Our editors and customer services teams also do not give personal investment advice. The information in this document is general advice only and may not be appropriate to your particular investment objectives, financial situation or particular needs. Before investing, or if you are in any doubt about your personal situation, you should seek professional advice from a stockbroker or independent financial adviser authorised by the Financial Sector Conduct Authority.