

GLOBAL OVERVIEW | SELECTED INDICES

SOUTH AFRICAN INDICES						
	CLOSE	PREVIOUS	1D%	5D%	1M%	YTD%
All Share	84026.18	83783.30	0.29	3.22	5.13	9.28
Top 40	76894.08	76637.97	0.33	3.36	5.43	9.08
Financial 15	20478.44	20396.13	0.40	3.74	8.04	14.58
Industrial 25	112905.99	112289.28	0.55	2.33	5.81	8.86
Resource 10	61033.24	61224.51	-0.31	4.85	0.61	6.08
Mid Cap	88119.79	88160.88	-0.05	3.03	5.02	9.58
Small Cap	82936.70	82737.99	0.24	2.94	4.24	14.41
Banks	13016.30	12959.60	0.44	4.52	8.86	18.89
Retailers	7176.50	7156.01	0.29	5.34	9.23	15.13
Property (J253) - TR	2206.63	2204.21	0.11	1.16	6.93	18.40

AMERICAN INDICES						
	CLOSE	PREVIOUS	1D%	5D%	1M%	YTD%
Dow Jones	40890.49	40834.97	0.14	2.20	1.50	8.49
Nasdaq	17918.99	17816.94	0.57	4.22	1.08	19.37
S&P 500	5620.85	5597.12	0.42	3.04	2.10	17.84
US VIX	16.27	15.88	2.46	0.49	-1.51	30.68

EUROPEAN INDICES						
	CLOSE	PREVIOUS	1D%	5D%	1M%	YTD%
CAC 40	7524.72	7485.73	0.52	2.61	-0.13	-0.24
DAX 30	18448.95	18349.98	0.54	3.15	1.52	10.13
Eurostoxx 50	4885.40	4859.00	0.54	3.50	1.24	8.04
FTSE	8283.43	8273.32	0.12	0.03	1.57	7.11

ASIAN INDICES						
	CLOSE	PREVIOUS	1D%	5D%	1M%	YTD%
Hang Seng	17391.01	17511.08	-0.69	1.62	-0.15	2.02
Nikkei 225	37951.80	38062.92	-0.29	4.14	-5.27	13.41
Shanghai	2856.58	2866.66	-0.35	0.21	-4.22	-3.98

EARLY MORNING MARKETS						
	LAST	CLOSE	% CHG	1D%	5D%	YTD%
TENCENT	372.80	371.60	0.32	0.32	-0.59	28.05
BHP AUS	4091.00	4088.00	0.07	1.57	3.18	-18.90

NOTE : 5D% and 1M% are rolling percentage moves

INTERNATIONAL ECONOMIC CALENDAR | SELECTED EVENTS

TIME	AREA	TODAY'S EVENTS & RELEASES	PERIOD	EXP.	PREV.
9:30	DE	HCOB Composite PMI Flash	Aug	49.80	49.10
10:30	GB	S&P Global Composite PMI Flash	Aug	52.90	52.80
15:45	US	S&P Global Composite PMI Flash	Aug	53.3	54.3
---	---	---	---	---	---
---	---	---	---	---	---

TIME	AREA	PREVIOUS SESSION'S RELEASES	PERIOD	EXP.	ACT.
10:00	ZA	Inflation Rate m/m	Jul	0.20%	0.40%
10:00	ZA	Core Inflation Rate m/m	Jul	0.40%	0.30%
20:00	US	FOMC Meeting Minutes	---	---	---
---	---	---	---	---	---
---	---	---	---	---	---

JSE ALL SHARE | BEST AND WORST ONE-DAY PERFORMERS

BEST ONE-DAY % PERFORMERS						
	CODE	CLOSE	1D%	5D%	YTD%	
Blue Label Telecoms Ltd	BLU	505	14.51	17.99	30.15	
Sasol Limited	SOL	13557	5.40	3.90	-26.83	
Raubex Group Ltd	RBX	4620	3.66	11.03	66.67	
Adcock Ingram Hldgs Ltd	AIP	6050	3.31	7.90	0.67	
Telkom SA SOC Ltd	TKG	2600	3.05	10.59	-12.58	
Curro Holdings Limited	COH	1281	2.73	6.84	9.96	

WORST ONE-DAY % PERFORMERS						
	CODE	CLOSE	1D%	5D%	YTD%	
DRD Gold Ltd	DRD	1691	-6.42	0.36	7.23	
Karoo000 Ltd	KRO	64001	-5.69	-0.38	34.74	
Gold Fields Ltd	GFI	29439	-5.37	3.01	5.98	
Investec plc	INP	13322	-3.46	-1.92	5.77	
Brait PLC	BAT	92	-3.16	5.75	-49.45	

DIVIDEND DATA

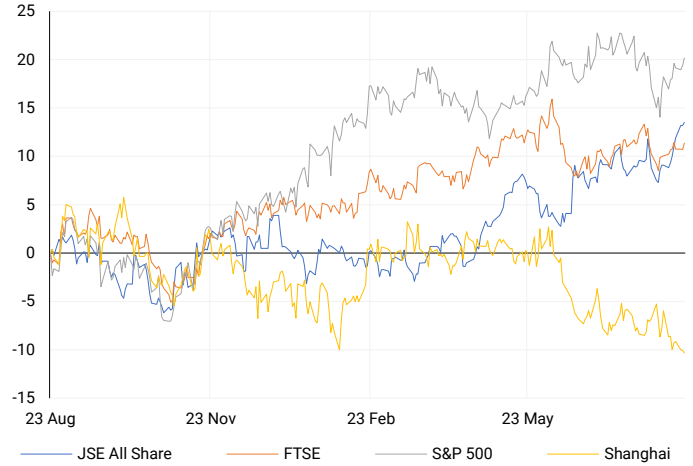
COMPANY	CODE	EXPECTED DIVIDEND	COMPANY	CODE	EXPECTED DIVIDEND
---	---	---	---	---	---
---	---	---	---	---	---
---	---	---	---	---	---
---	---	---	---	---	---
---	---	---	---	---	---

SOURCES | JSE, IRESS, MONEYWEB, CNBC, BBC, CNN

PLEASE SEE THE BOTTOM OF THE LAST PAGE FOR THE FULL DISCLAIMER

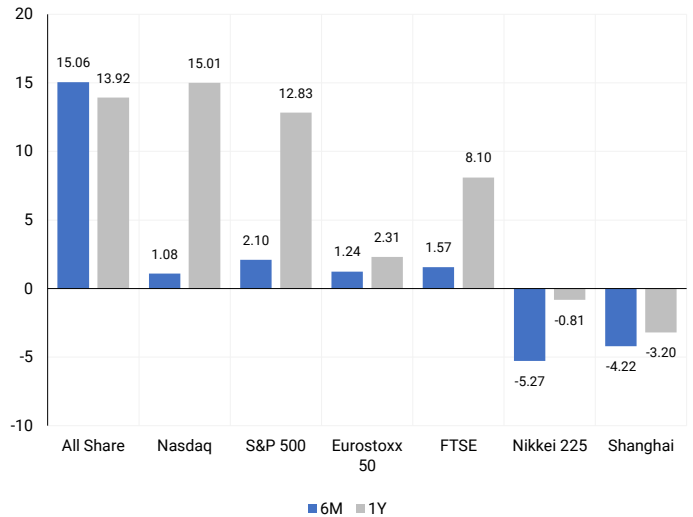
INTERNATIONAL INDICES

Normalised percentage performances - In rand terms



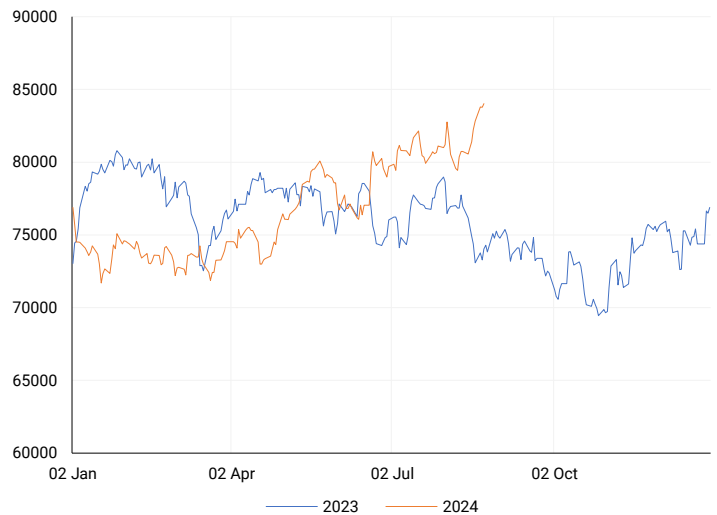
INTERNATIONAL INDICES

6-month & 1-year percentage performances



JSE ALL SHARE INDEX

2023 v 2024 to date



LOCAL EQUITIES | JSE LARGE CAP COMPANIES (Cents Per Share)

COMPANY	CLOSE	PREVIOUS	1D%	5D%	1M%	YTD%
Absa Group Limited	16831	16422	2.49	9.88	8.10	2.81
Anglo American plc	53466	52314	2.20	6.67	0.87	12.92
Anglo American Plat Ltd	70000	71048	-1.48	11.05	14.57	-27.39
Anglogold Ashanti Ltd	56850	57119	-0.47	2.75	10.32	60.86
Anheuser-Busch InBev SA NV	108700	108023	0.63	-0.74	-1.67	-9.43
BHP Group Limited	49108	47951	2.41	4.04	-3.04	-22.47
BID Corporation Ltd	43125	43064	0.14	-1.59	-1.13	1.08
British American Tob plc	64614	64442	0.27	-0.62	6.80	19.32
Compagnie Fin Richemont	284000	283112	0.31	4.61	3.76	10.61
Capitec Bank Hldgs Ltd	289040	288001	0.36	2.00	7.03	42.64
Discovery Ltd	15018	14931	0.58	2.89	9.78	4.52
Firststrand Ltd	8445	8394	0.61	3.35	7.58	14.88
Gold Fields Ltd	29439	31110	-5.37	3.01	-2.45	5.98
Glencore plc	9630	9558	0.75	3.03	-8.31	-13.75
Impala Platinum Hlgs Ltd	9135	9033	1.13	11.54	0.14	0.09
Kumba Iron Ore Ltd	36478	36123	0.98	-0.01	-11.03	-40.66
Mondi plc	33811	33973	-0.48	0.83	-8.87	-6.86
MTN Group Ltd	8948	8950	-0.02	5.31	18.96	-22.53
Naspers Ltd -N-	367450	362054	1.49	1.67	6.94	17.47
Prosus N.V.	66138	65446	1.06	2.30	3.58	18.02
South32 Limited	3638	3580	1.62	4.45	-12.55	-13.77
Standard Bank Group Ltd	23641	23601	0.17	7.92	12.90	13.60
Shoprite Holdings Ltd	30463	30234	0.76	1.12	5.71	10.75
Sanlam Limited	8448	8413	0.42	3.02	6.08	16.04
Sasol Limited	13557	12863	5.40	3.90	-0.63	-26.83
Sibanye Stillwater Ltd	1974	1973	0.05	10.03	-2.71	-20.72
Vodacom Group Ltd	10880	10800	0.74	9.57	16.90	2.64

SOUTH AFRICAN MARKET SUMMARY

SELECTED ITEMS

The Top-40 index closed 0.33% higher on the stock market. Consumer inflation in South Africa fell more than expected to 4.6% in July, down from 4.8% a year ago and 5.1% in June, according to the statistics agency. This figure is close to the central bank's target of 4.5%, leading economists to anticipate a 25-basis point rate cut on September 19. JSE-listed RCL Foods, controlled by Johann Rupert's Remgro, announced a significant increase in earnings for the year ending June 30, 2024. Meanwhile, Spur Corporation, another JSE-listed company, reported an 11.4% growth in headline earnings per share, reaching 291.02 cents for the same period.

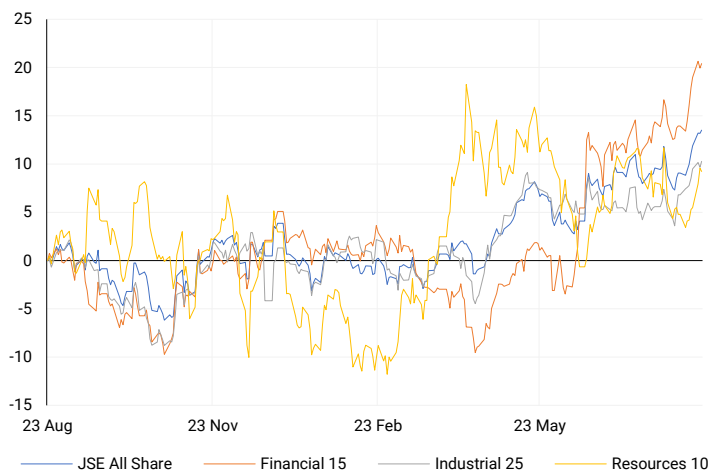
JSE ALL SHARE

One-year



LOCAL INDICES

Normalised percentage performances



EXPECTED COMPANY REPORTING SCHEDULE

COMPANY	CODE	RELEASE	DATE
Spur	SUR	Final	22 Aug '24
Gold Fields	GFI	Interim	23 Aug '24
BHP	BHG	Final	27 Aug '24
Sibanye Stillwater	SSW	Interim	29 Aug '24
Santam	SNT	Interim	29 Aug '24

BANK AND OTHER SELECTE PREFERENCE SHARES

COMPANY	CODE	CLOSE	CLEAN YIELD	NEXT LDT (Est.)
Investec Limited	INPR	8900	11.24	Thu, 06 Jun '24
Standard Bank	SBPP	9000	11.15	Thu, 05 Sep '24
Absa	ABSP	80106	11.48	Thu, 12 Sep '24
Capitec	CPIP	10010	9.69	Thu, 19 Sep '24
Steinhoff	SHFF	9734	10.47	Thu, 17 Oct '24
Grindrod	GNDP	9200	12.22	Thu, 19 Sep '24
Netcare	NTCP	8200	11.82	Thu, 31 Oct '24
Discovery	DSBP	9615	11.91	Thu, 19 Sep '24
Invicta	IVTP	---	13.41	Thu, 27 Jun '24

LOCAL SENS ANNOUNCEMENTS

SELECTED RELEASE

SABVEST CAPITAL LIMITED – Unaudited Results

The company's financial results for the first half of 2024 show a slight increase in net asset value per share (7.8% from December 2023 and 2.8% from June 2023) and shareholders' funds (5.7% from December 2023 and 0.4% from June 2023). Dividends per share rose by 16.7% to 35 cents compared to the same period last year. Total comprehensive income increased significantly by 60.3% to R319.8 million, and earnings per share saw a notable rise of 63.2% to 826.1 cents. The number of shares in issue decreased slightly over the period.

SBP | -2.98% OPEN | 7550c HIGH | 7550c LOW | 7325c CLOSE | 7325c TIME | 08:00

SPUR CORPORATION LIMITED – Consolidated Audited Annual Financial Statements

Key highlights for the period include a 11.5% increase in franchised restaurant turnovers to R10.62 billion and a 14.1% rise in revenue to R3.47 billion. Earnings per share grew by 10.7% to 287.92 cents, while diluted earnings per share increased by 8.7% to 281.31 cents. The dividend per share also saw a 10.9% increase to 213 cents. Profit before tax rose by 7.3% to R341.7 million, and headline earnings per share improved by 11.4% to 291.02 cents. The company reported unrestricted cash of R365.7 million as of June 2024, with a return on equity of 29.6%.

SUR | -1.15% OPEN | 3520c HIGH | 3520c LOW | 3450c CLOSE | 3450c TIME | 09:00

DRDGOLD LIMITED – Reviewed Condensed Consolidated Financial Statements

For the year ending June 2024, the company reported a 14% increase in revenue to R6.24 billion and a 14% rise in operating profit to R2.08 billion. Earnings per share grew by 3% to 154.3 cents, while headline earnings per share increased by 4% to 154.1 cents. However, the final dividend per share dropped significantly by 69% to 20 cents.

DRD | -6.42% OPEN | 1810c HIGH | 1824c LOW | 1680c CLOSE | 1691c TIME | 08:00

CURRO HOLDINGS LIMITED – Results

In the first half of 2024, Curro saw a 0.5% increase in average learner numbers to 72,758, with revenue rising by 8.3% to R2.59 billion. EBITDA grew by 10.4% to R625 million, while recurring headline earnings increased by 12.3% to R228 million. Both recurring headline earnings per share (RHEPS) and headline earnings per share (HEPS) rose by 16.2% to 40.2 cents. Earnings per share (EPS) also saw a 20.4% increase to 40.2 cents. The Board decided not to declare a dividend for the period, maintaining their policy to distribute 20% of recurring headline earnings annually.

COH | 2.73% OPEN | 1215c HIGH | 1290c LOW | 1215c CLOSE | 1281c TIME | 07:05

LOCAL EQUITIES | JSE MID CAP COMPANIES (Cents Per Share)

COMPANY	CODE	CLOSE	PREVIOUS	1D%	1M%	YTD%
Aspen Pharmacare Hldgs Ltd	APN	23384	23748	-1.53	0.58	14.91
African Rainbow Min Ltd	ARI	19224	19200	0.13	-11.88	-3.88
AVI Ltd	AVI	9971	10036	-0.65	3.18	21.49
Barloworld Ltd	BAW	9318	9380	-0.66	9.00	17.95
Bidvest Ltd	BVT	28200	28197	0.01	4.64	11.78
Bytes Technology Grp PLC	BYI	11338	11139	1.79	-1.41	-20.83
Capital&Counties Prop plc	CCO	3301	3381	-2.37	-6.03	1.57
Clicks Group Ltd	CLS	35950	35614	0.94	7.24	10.37
Dis-Chem Pharmacies Ltd	DCP	3682	3706	-0.65	6.66	19.97
Exxaro Resources Ltd	EXX	16632	16508	0.75	-13.13	-18.66
Fortress Real Est INV B	FFB	1762	1760	0.11	5.83	22.70
Growthpoint Prop Ltd	GRT	1342	1336	0.45	12.40	14.90
Harmony GM Co Ltd	HAR	19953	20071	-0.59	11.66	66.85
Hammerson plc	HMN	642	661	-2.87	-6.28	-5.59
Investec Ltd	INL	13303	13718	-3.03	-2.38	5.92
Investec plc	INP	13322	13800	-3.46	-2.76	5.77
Italtile Ltd	ITE	1245	1255	-0.80	7.33	11.16
Life Healthc Grp Hldgs Ltd	LHC	1400	1397	0.21	11.02	-23.79
MultiChoice Group Ltd	MCG	10994	10928	0.60	2.27	35.69
Montauk Renewables Inc	MKR	8020	8120	-1.23	-23.62	-53.37
Mr Price Group Ltd	MRP	23500	23357	0.61	15.60	49.86
Momentum Met Hldgs Ltd	MTM	2750	2740	0.36	20.56	25.63
Ninety One Plc	N91	3885	3873	0.31	-1.87	-9.90
Nedbank Group Ltd	NED	29926	29611	1.06	16.65	38.40
Northam Platinum Hldgs Ltd	NPH	12539	12546	-0.06	-1.70	-10.71
NEPI Rockcastle N.V.	NRP	13990	13975	0.11	7.19	10.70
Netcare Limited	NTC	1344	1350	-0.44	12.85	-5.62
Ninety One Limited	NY1	3829	3825	0.10	-1.34	-10.89
Old Mutual Limited	OMU	1237	1235	0.16	3.26	-5.28
OUTsurance Group Ltd	OUT	4797	4814	-0.35	1.01	13.67
Pick n Pay Stores Ltd	PIK	2358	2361	-0.13	1.20	1.33
Pepkor Holdings Ltd	PPH	2069	2072	-0.14	5.19	5.40
Quilter Plc	QLT	3308	3302	0.18	14.19	36.24
Redefine Properties Ltd	RDF	445	446	-0.22	7.49	15.58
Remgro Ltd	REM	13988	13945	0.31	4.71	-13.91
Resilient REIT Limited	RES	5357	5280	1.46	11.07	20.95
Reinet Investments S.C.A	RNI	47151	46749	0.86	4.45	1.14
Sappi Ltd	SAP	4664	4707	-0.91	-9.79	5.52
Santam Limited	SNT	35223	35305	-0.23	6.05	22.91
The Spar Group Ltd	SPP	12437	12587	-1.19	3.23	5.49
Sirius Real Estate Ltd	SRE	2210	2210	0.00	-0.45	-0.23
Tiger Brands Ltd	TBS	22396	22670	-1.21	1.64	11.26
Transaction Capital Ltd	TCP	295	290	1.72	4.61	-63.03
The Foschini Group Limited	TFG	14089	13898	1.37	5.61	26.97
Thungela Resources Ltd	TGA	11884	12083	-1.65	4.25	-22.73
Telkom SA SOC Ltd	TKG	2600	2523	3.05	15.04	-12.58
Truworths Int Ltd	TRU	9731	9679	0.54	10.89	30.88
Woolworths Holdings Ltd	WHL	6408	6449	-0.64	8.57	-11.25
Zeda Limited	ZZD	1230	1215	1.23	5.31	-3.53

LOCAL EQUITIES | JSE SMALL CAP COMPANIES (Cents Per Share)

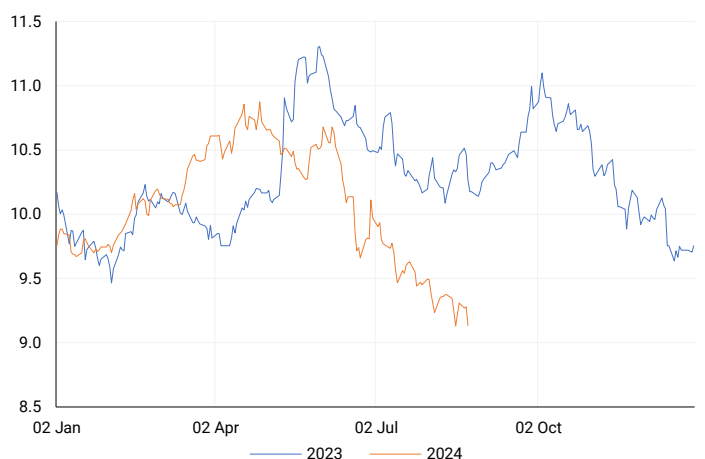
COMPANY	CODE	CLOSE	PREVIOUS	1D%	1M%	YTD%
ArcelorMittal SA Limited	ACL	125	121	3.31	-7.41	-23.78
ADVTECH Ltd	ADH	3176	3125	1.63	5.94	29.42
Altron Limited A	AEL	1736	1753	-0.97	11.21	69.37
AECI Limited	AFE	10650	10652	-0.02	-0.37	-2.91
Alexander Forbes Grp Hldgs	AFH	658	671	-1.94	-1.79	-0.30
Afrimat Limited	AFT	6400	6400	0.00	-5.92	1.59
African Rainbow Cap Inv	AIL	611	616	-0.81	-3.93	24.95
Adcock Ingram Hldgs Ltd	AIP	6050	5856	3.31	2.16	0.67
Astral Foods Ltd	ARL	17221	17297	-0.44	4.85	17.49
Attacq Limited	ATT	1111	1118	-0.63	4.71	20.50
Brait PLC	BAT	92	95	-3.16	34.76	-49.45
Blue Label Telecoms Ltd	BLU	505	441	14.51	17.72	30.15
Burstone Group	BTN	795	800	-0.63	2.58	-0.63
Coronation Fund Mngrs Ld	CML	3928	3900	0.72	3.97	26.06
Curro Holdings Limited	COH	1281	1247	2.73	6.04	9.96
Cashbuild Ltd	CSB	16875	16721	0.92	-0.29	1.09
DRD Gold Ltd	DRD	1691	1807	-6.42	-6.42	7.23
Datatec Ltd	DTC	3610	3600	0.28	-0.33	-10.86
Emira Property Fund Ltd	EMI	1035	1065	-2.82	-4.70	21.05
Equites Prop Fund Ltd	EQU	1325	1341	-1.19	1.30	-5.02
Famous Brands Ltd	FBR	5709	5700	0.16	9.26	-1.45
Fairvest Limited B	FTB	416	415	0.24	6.67	20.93
Grindrod Ltd	GND	1570	1575	-0.32	0.32	37.00
Hosken Cons Inv Ltd	HCI	17776	18010	-1.30	-5.49	-12.26
Hudaco Industries Ltd	HDC	18125	18140	-0.08	2.69	12.84
Hyprop Inv Ltd	HYP	3570	3535	0.99	13.95	14.75
JSE Ltd	JSE	11053	10967	0.78	9.90	19.57
KAP Industrial Hldgs Ltd	KAP	321	316	1.58	9.18	22.52
Karooooo Ltd	KRO	64001	67864	-5.69	0.00	34.74
PSG Konsult Limited	KST	1674	1664	0.60	-2.79	9.06
Libstar Holdings Ltd	LBR	430	415	3.61	10.26	22.86
Lighthouse Properties plc	LTE	818	827	-1.09	4.07	11.29
Industrials REIT Limited	MLI	1.5	1.6	-6.25	25.00	114.29
MAS P.L.C	MSP	1797	1791	0.34	0.67	3.81
Metair Investments Ltd	MTA	1324	1317	0.53	-5.16	-25.41
Motus Holdings Ltd	MTH	11195	11235	-0.36	12.54	10.30
Murray & Roberts Hldgs	MUR	300	301	-0.33	14.50	101.34
Oceana Group Ltd	OCE	7045	7054	-0.13	4.74	-0.31
Omnia Holdings Ltd	OMN	6220	6155	1.06	-7.16	-4.85
Pan African Resource plc	PAN	719	707	1.70	14.31	75.79
PPC Limited	PPC	402	397	1.26	11.36	0.75
Raubex Group Ltd	RBX	4620	4457	3.66	3.82	66.67
RFG Holdings Limited	RFG	1580	1555	1.61	6.04	17.04
Reunert Ltd	RLO	7510	7500	0.13	4.67	25.29
SA Corp Real Estate Ltd	SAC	269	270	-0.37	-0.37	15.95
Super Group Ltd	SPG	2605	2631	-0.99	-11.48	-12.44
Stor-Age Prop REIT Ltd	SSS	1371	1384	-0.94	4.10	4.98
Southern Sun LTD	SSU	620	610	1.64	5.08	18.10
Sun International Ltd	SUI	4018	4073	-1.35	10.54	-2.00
Tharisa plc	THA	1901	1900	0.05	-2.01	25.81
Tsogo Sun Gaming Ltd	TSG	1151	1180	-2.46	0.96	-6.04
Vukile Property Fund Ltd	VKE	1697	1688	0.53	3.73	20.18
Wilson Bayly Hlm-Ovc Ltd	WBO	18800	18763	0.20	6.61	44.55

10-YEAR BOND YIELD | SELECTED ITEMS (Basis Point Change)

REGION	YIELD	1D	1M	1Y
United States	3.80%	0	-43	--
United Kingdom	3.89%	-2	-23	-84
Germany	2.19%	-2	-28	-51
Japan	0.87%	-1	-16	--
South African 10Y	912.00%	-17	-45	-136

SOUTH AFRICAN 10-YEAR

2023 vs 2024 to date

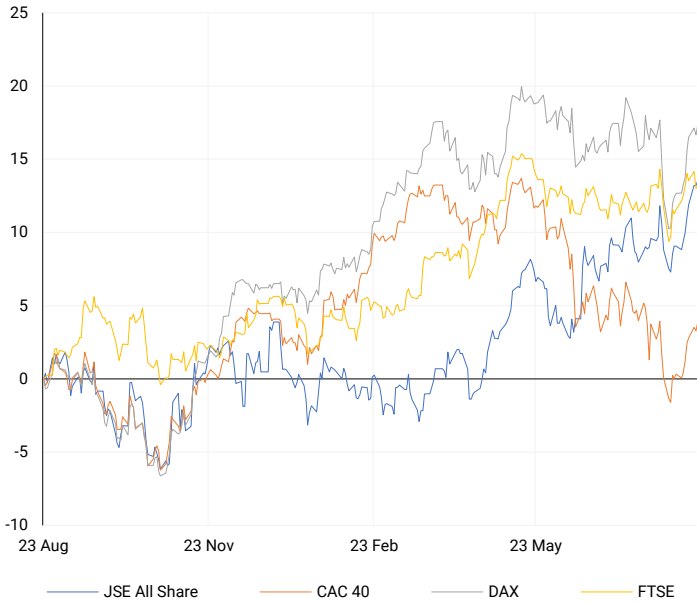


GLOBAL INTEREST RATES | SELECTED ITEMS

REGION	DATE CHANGED	CURRENT RATE
United States	Wed, 26 Jul '23	5.25%-5.50%
United Kingdom	Thu, 03 Aug '23	5.25%
European	Thu, 27 Jul '23	4.25%
SA Repo Rate	Thu, 25 May '23	8.25%
SA Prime Rate	Thu, 25 May '23	11.75%

EUROPEAN INDICES

Normalised percentage performances



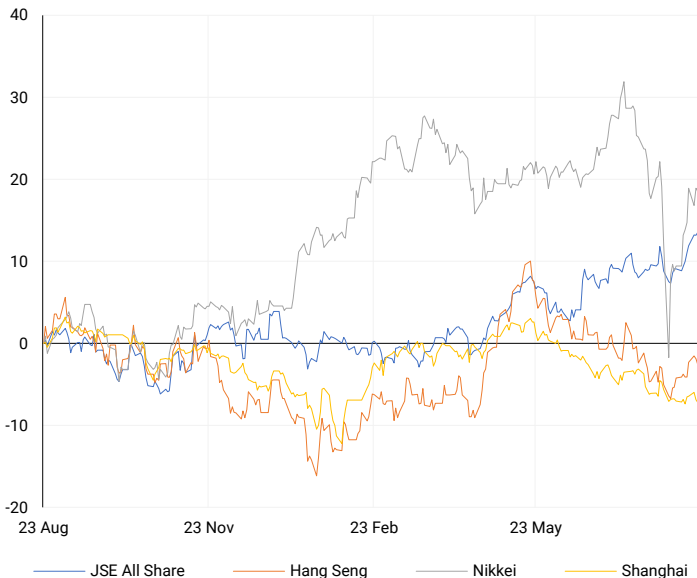
AMERICAN INDICES

Normalised percentage performances



ASIAN INDICES

Normalised percentage performances

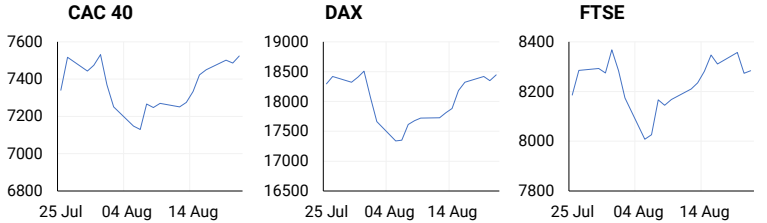


EUROPEAN MARKET SUMMARY

SELECTED ITEMS

European stock markets closed higher on Wednesday, recovering after a recent dip. The U.K.'s public sector net borrowing increased to £3.1 billion in July, up by £1.8 billion from the previous year, exceeding the forecasted £2.5 billion. Borrowing for the first four months of the year was £4.7 billion above the Office for Budget Responsibility's March forecast. The rest of the week is expected to be quiet for European data, with the main focus on the flash purchasing managers' index figures for the euro area due on Thursday.

EUROPEAN INDICES	CLOSE	PREVIOUS	1D%	5D%	1M%	YTD%
CAC 40	7524.72	7485.73	0.52	2.61	-0.13	-0.24
DAX 30	18448.95	18349.98	0.54	3.15	1.52	10.13
Eurostoxx 50	4885.40	4859.00	0.54	3.50	1.24	8.04
FTSE	8283.43	8273.32	0.12	0.03	1.57	7.11

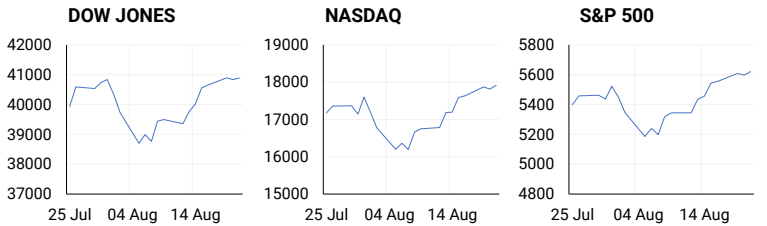


AMERICAN MARKET SUMMARY

SELECTED ITEMS

U.S. stocks edged higher on Wednesday amid cautious trading, as investors digested a significant downward revision in payrolls data and the release of minutes from the Federal Reserve's July meeting. The minutes reinforced expectations for a potential rate cut in September, even before recent reports showed cooling inflation and a softening economy. All three major U.S. stock indexes closed modestly up. The Labor Department's revision reduced the previously reported 2.9 million payroll gains by 818,000, marking the steepest downward adjustment since the global financial crisis.

AMERICAN INDICES	CLOSE	PREVIOUS	1D%	5D%	1M%	YTD%
Dow Jones	40890.49	40834.97	0.14	2.20	1.50	8.49
Nasdaq	17918.99	17816.94	0.57	4.22	1.08	19.37
S&P 500	5620.85	5597.12	0.42	3.04	2.10	17.84
US VIX	16.27	15.88	2.46	0.49	-1.51	30.68

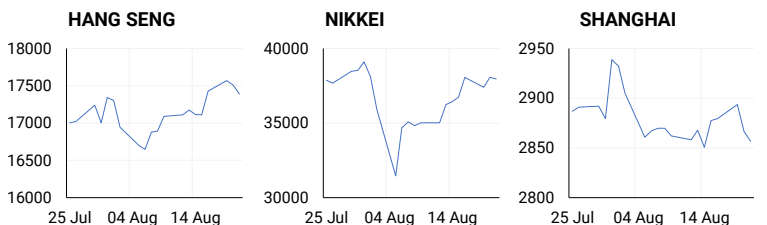


ASIAN MARKET SUMMARY

SELECTED ITEMS

Asia-Pacific markets opened mostly higher this morning as investors focused on business activity data from Australia, Japan, and India. The Bank of Korea maintained its benchmark interest rate at 3.5%, as expected, but traders are closely watching its press release for hints of potential policy easing. In Japan, business activity accelerated in August, with the composite purchasing managers index rising to 53.0 from 52.5 in July. Japan's manufacturing sector returned to growth, while the services sector experienced faster expansion.

ASIAN INDICES	CLOSE	PREVIOUS	1D%	5D%	1M%	YTD%
Hang Seng	17391.01	17511.08	-0.69	1.62	-0.15	2.02
Nikkei 225	37951.80	38062.92	-0.29	4.14	-5.27	13.41
Shanghai	2856.58	2866.66	-0.35	0.21	-4.22	-3.98



COMMODITIES MARKET SUMMARY

SELECTED ITEMS

Gold prices dropped this morning, pulling back from the record highs reached earlier this week as the U.S. dollar strengthened ahead of key U.S. jobs data and a speech by the Federal Reserve Chair, which could provide more clarity on the future of interest rates. Meanwhile, the recent sharp decline in crude oil prices paused as anticipation of a Federal Reserve rate cut helped offset concerns arising from weak economic data from both the United States and China.

COMMODITY	LAST	CLOSE	% CHG	1D%	5D%	YTD%
Brent Crude	76.02	76.10	-0.11	-1.39	-4.71	-1.27
Gold	2502.59	2512.24	-0.38	-0.07	2.62	21.78
Palladium	956.33	954.79	0.16	2.67	2.56	-12.98
Platinum	966.55	969.53	-0.31	1.79	4.67	-1.79
Silver	29.48	29.60	-0.41	0.58	7.40	24.43

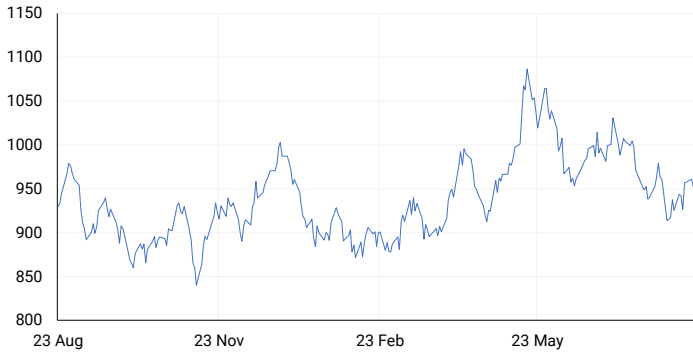
BRENT CRUDE

One-year



PLATINUM

One-year



GOLD

One-year



CURRENCY PAIR	LAST	CLOSE	% CHG	1D%	5D%	YTD%
USDZAR	17.89	17.84	0.27	0.19	-1.21	-2.63
GBPZAR	23.41	23.34	0.30	0.50	0.54	0.18
EURZAR	19.93	19.89	0.19	0.31	0.02	-1.46
AUDZAR	12.06	12.02	0.27	0.06	0.83	-3.49
EURUSD	1.11	1.11	-0.08	0.18	1.25	1.02
USDJPY	145.17	145.20	-0.02	-0.04	-1.45	2.95
GBPUSD	1.31	1.31	-0.06	0.43	2.05	2.82
USDCHF	0.85	0.85	-0.02	-0.28	-1.56	1.20

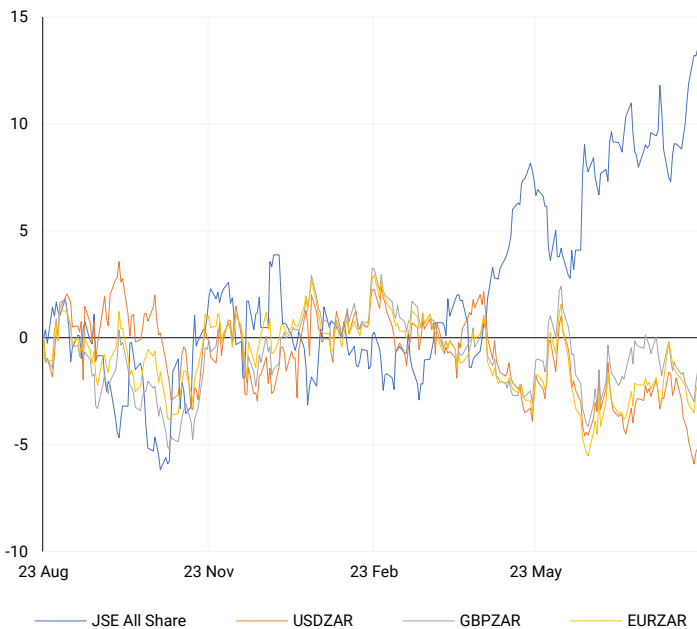
CURRENCY MARKET SUMMARY

SELECTED ITEMS

On Wednesday, the South African rand weakened as July's inflation dropped to a three-year low, reinforcing analysts' expectations that the South African Reserve Bank may cut interest rates next month. The dollar hovered near its lowest level in over a year against the euro and sterling this morning, as a dovish stance from the Federal Reserve and new signs of weakness in the U.S. job market bolstered expectations for interest rate cuts.

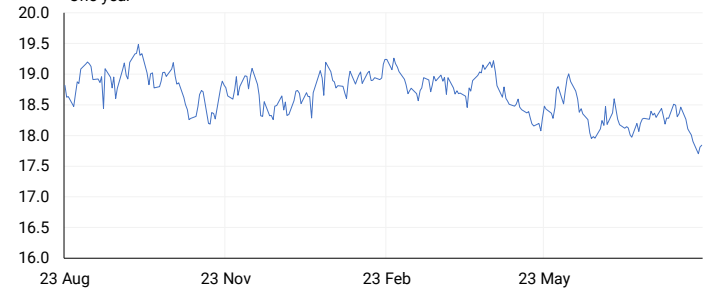
CURRENCY PAIRS vs JSE ALL SHARE

Normalised percentage performances



USDZAR

One-year



EURUSD

One-year



SOURCES | JSE, IRESS, MONEYWEB, CNBC, BBC, CNN

Disclaimer: This note is prepared for Sanlam Private Wealth (Pty) Ltd, by K2013143132 (Pty) Ltd trading as ThompsonGreen. ThompsonGreen is an independent company contracted to Sanlam Private Wealth (Pty) Ltd. The views expressed in this note are those of ThompsonGreen and/or its analysts and not necessarily the views of Sanlam Private Wealth (Pty) Ltd, Sanlam or any officer or agent thereof. K2013143132 (Pty) Ltd trading as ThompsonGreen is a research house and not a registered broker, financial adviser or financial service provider. Our editors and customer services teams also do not give personal investment advice. The information in this document is general advice only and may not be appropriate to your particular investment objectives, financial situation or particular needs. Before investing, or if you are in any doubt about your personal situation, you should seek professional advice from a stockbroker or independent financial adviser authorised by the Financial Sector Conduct Authority.