

GLOBAL OVERVIEW | SELECTED INDICES

SOUTH AFRICAN INDICES						
	CLOSE	PREVIOUS	1D%	5D%	1M%	YTD%
All Share	83620.81	84026.18	-0.48	1.70	3.89	8.75
Top 40	76411.79	76894.08	-0.63	1.65	4.00	8.39
Financial 15	20253.99	20478.44	-1.10	1.00	6.11	13.32
Industrial 25	113540.88	112905.99	0.56	2.18	4.66	9.47
Resource 10	59799.54	61033.24	-2.02	1.67	-0.35	3.94
Mid Cap	87237.46	88119.79	-1.00	1.14	3.58	8.49
Small Cap	83461.19	82936.70	0.63	2.79	4.49	15.13
Banks	12820.39	13016.30	-1.51	0.92	6.47	17.10
Retailers	7181.68	7176.50	0.07	2.69	7.56	15.21
Property (J253) - TR	2217.21	2206.63	0.48	1.32	6.73	18.97

AMERICAN INDICES						
	CLOSE	PREVIOUS	1D%	5D%	1M%	YTD%
Dow Jones	40712.78	40890.49	-0.43	0.37	0.74	8.02
Nasdaq	17619.35	17918.99	-1.67	0.14	-2.16	17.37
S&P 500	5570.64	5620.85	-0.89	0.49	0.11	16.79
US VIX	17.55	16.27	7.87	15.23	17.71	40.96

EUROPEAN INDICES						
	CLOSE	PREVIOUS	1D%	5D%	1M%	YTD%
CAC 40	7524.11	7524.72	-0.01	1.36	-1.28	-0.25
DAX 30	18493.39	18448.95	0.24	1.71	1.44	10.40
Eurostoxx 50	4883.00	4885.40	-0.05	1.39	-0.49	7.99
FTSE	8288.00	8283.43	0.06	-0.71	1.09	7.17

ASIAN INDICES						
	CLOSE	PREVIOUS	1D%	5D%	1M%	YTD%
Hang Seng	17641.00	17391.01	1.44	3.11	0.03	3.48
Nikkei 225	38211.01	37951.80	0.68	4.04	-3.51	14.18
Shanghai	2848.77	2856.58	-0.27	-0.99	-3.89	-4.24

EARLY MORNING MARKETS						
	LAST	CLOSE	% CHG	1D%	5D%	YTD%
TENCENT	372.80	371.60	0.32	0.32	-0.59	28.05
BHP AUS	4091.00	4088.00	0.07	1.57	3.18	-18.90

NOTE : 5D% and 1M% are rolling percentage moves

INTERNATIONAL ECONOMIC CALENDAR | SELECTED EVENTS

TIME	AREA	TODAY'S EVENTS & RELEASES	PERIOD	EXP.	PREV.
16:00	US	Fed Chair Powell Speech	---	---	---
17:00	GB	BoE Gov Bailey Speech	---	---	---
---	US	Jackson Hole Symposium	---	---	---
---	---	---	---	---	---
---	---	---	---	---	---

TIME	AREA	PREVIOUS SESSION'S RELEASES	PERIOD	EXP.	ACT.
9:30	DE	HCOB Composite PMI Flash	Aug	49.8	48.5
10:30	GB	S&P Global Composite PMI Flash	Aug	52.9	53.4
15:45	US	S&P Global Composite PMI Flash	Aug	53.30	54.10
---	---	---	---	---	---
---	---	---	---	---	---

JSE ALL SHARE | BEST AND WORST ONE-DAY PERFORMERS

BEST ONE-DAY % PERFORMERS						
	CODE	CLOSE	1D%	5D%	YTD%	
Adcock Ingram Hldgs Ltd	AIP	6596	9.02	16.31	9.75	
Sasol Limited	SOL	14410	6.29	6.54	-22.23	
Karoo Ltd	KRO	68000	6.25	4.22	43.16	
Brait PLC	BAT	97	5.43	12.79	-46.70	
Shaftesbury Capital plc	SHC	3436	4.09	3.81	5.72	
Italtile Ltd	ITE	1290	3.61	7.50	15.18	

WORST ONE-DAY % PERFORMERS						
	CODE	CLOSE	1D%	5D%	YTD%	
Impala Platinum Hlgs Ltd	IMP	8607	-5.78	3.03	-5.70	
DRD Gold Ltd	DRD	1603	-5.20	-4.87	1.65	
Harmony GM Co Ltd	HAR	19188	-3.83	4.45	60.45	
Anglo American Plat Ltd	AMS	67382	-3.74	5.02	-30.10	
Nedbank Group Ltd	NED	28811	-3.73	-1.00	33.24	

DIVIDEND DATA

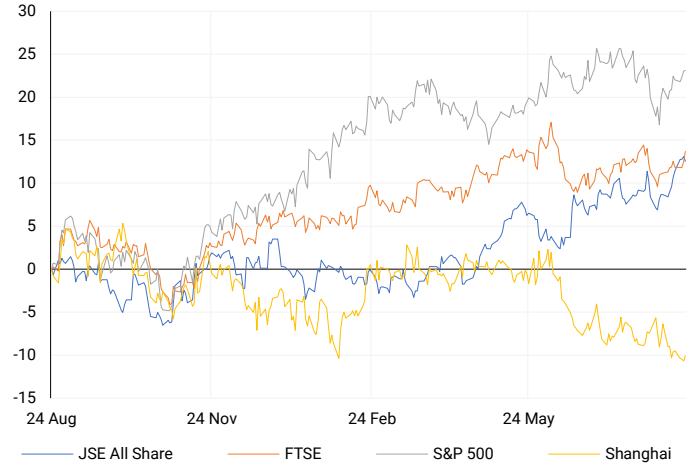
COMPANY	CODE	EXPECTED DIVIDEND	COMPANY	CODE	EXPECTED DIVIDEND
---	---	---	---	---	---
---	---	---	---	---	---
---	---	---	---	---	---
---	---	---	---	---	---
---	---	---	---	---	---

SOURCES | JSE, IRESS, MONEYWEB, CNBC, BBC, CNN

PLEASE SEE THE BOTTOM OF THE LAST PAGE FOR THE FULL DISCLAIMER

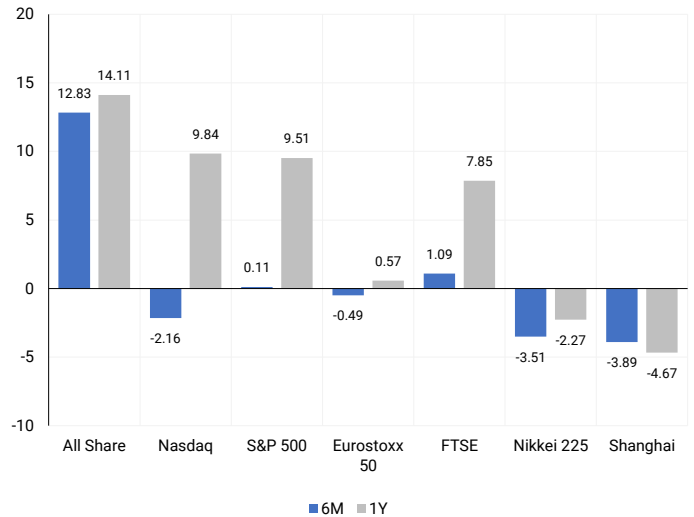
INTERNATIONAL INDICES

Normalised percentage performances - In rand terms



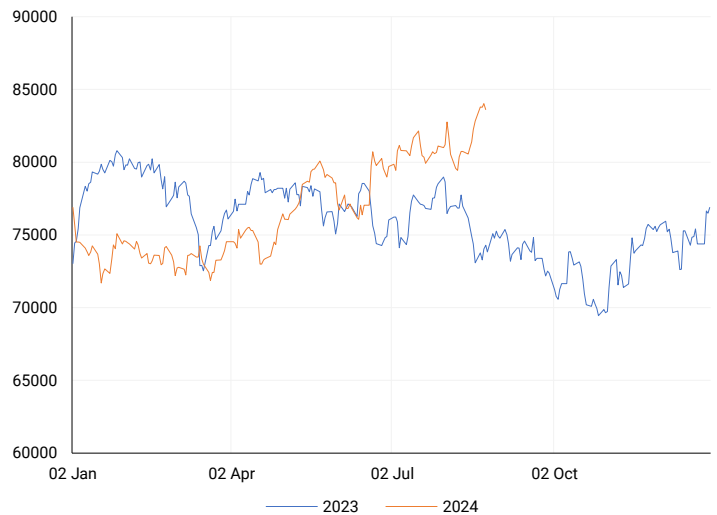
INTERNATIONAL INDICES

6-month & 1-year percentage performances



JSE ALL SHARE INDEX

2023 v 2024 to date



LOCAL EQUITIES | JSE LARGE CAP COMPANIES (Cents Per Share)

COMPANY	CLOSE	PREVIOUS	1D%	5D%	1M%	YTD%
Absa Group Limited	16700	16831	-0.78	7.13	5.34	2.01
Anglo American plc	52753	53466	-1.33	3.92	0.29	11.41
Anglo American Plat Ltd	67382	70000	-3.74	5.02	6.98	-30.10
Anglogold Ashanti Ltd	55241	56850	-2.83	0.27	8.68	56.31
Anheuser-Busch InBev SA NV	109937	108700	1.14	1.29	-2.17	-8.40
BHP Group Limited	48908	49108	-0.41	3.04	-3.70	-22.79
BID Corporation Ltd	43240	43125	0.27	0.18	-1.95	1.35
British American Tob plc	65153	64614	0.83	0.56	6.22	20.32
Compagnie Fin Richemont	291012	284000	2.47	6.19	5.14	13.34
Capitec Bank Hldgs Ltd	284900	289040	-1.43	0.81	4.91	40.60
Discovery Ltd	15189	15018	1.14	3.76	10.59	5.71
Firststrand Ltd	8349	8445	-1.14	0.98	6.09	13.58
Gold Fields Ltd	28390	29439	-3.56	-1.89	-4.45	2.20
Glencore plc	9549	9630	-0.84	1.05	-8.80	-14.47
Impala Platinum Hlgs Ltd	8607	9135	-5.78	3.03	-2.47	-5.70
Kumba Iron Ore Ltd	36365	36478	-0.31	1.46	-10.06	-40.85
Mondi plc	34025	33811	0.63	0.63	-8.66	-6.27
MTN Group Ltd	9011	8948	0.70	4.71	20.69	-21.98
Naspers Ltd -N-	369365	367450	0.52	1.17	4.62	18.08
Prosus N.V.	66635	66138	0.75	1.73	1.79	18.91
South32 Limited	3664	3638	0.71	4.24	0.38	-13.15
Standard Bank Group Ltd	23275	23641	-1.55	0.22	10.10	11.85
Shoprite Holdings Ltd	30485	30463	0.07	2.52	4.25	10.83
Sanlam Limited	8405	8448	-0.51	0.66	5.14	15.45
Sasol Limited	14410	13557	6.29	6.54	-0.89	-22.23
Sibanye Stillwater Ltd	1904	1974	-3.55	3.70	-3.25	-23.53
Vodacom Group Ltd	11095	10880	1.98	11.50	18.27	4.67

SOUTH AFRICAN MARKET SUMMARY

SELECTED ITEMS

On the stock market, the Top-40 index, after reaching record highs earlier in the day on Thursday, closed down by 0.63%. Cashbuild, listed on the JSE, saw its share price drop nearly 4% in early trade following a SENS update indicating an anticipated double-digit decline in annual earnings. Meanwhile, Adcock Ingram, also listed on the JSE, reported a 10% increase in headline earnings per share (HEPS) for the year ending June 2024.

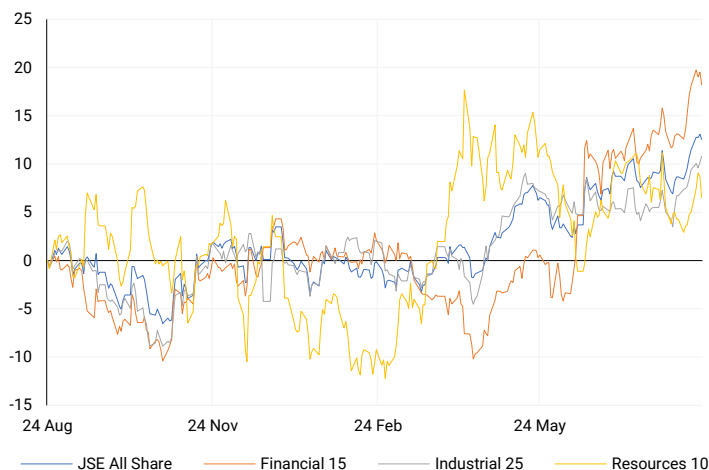
JSE ALL SHARE

One-year



LOCAL INDICES

Normalised percentage performances



LOCAL SENS ANNOUNCEMENTS

SELECTED RELEASE

CASHBUILD LIMITED – Trading Statement

Cashbuild is finalizing its audited results for the 53 weeks ending June 30, 2024, expected to be released on September 4, 2024. The company anticipates reporting earnings per share (EPS) between 365.5 cents and 411.2 cents, a decline of 10-20% compared to the previous year's EPS of 456.9 cents. Additionally, headline earnings per share (HEPS) are expected to be between 855.1 cents and 977.2 cents, a drop of 20-30% from the prior year's HEPS of 1,221.5 cents. The difference between EPS and HEPS is mainly due to the impairment of P&L Hardware goodwill, trademark, and other store impairments, reflecting the challenging economic conditions.

CSB | -2.81% OPEN | 16250c HIGH | 16550c LOW | 15701c CLOSE | 16400c TIME | 07:35

ADCOCK INGRAM HOLDINGS LIMITED – Audited Group Financial Results

For the year 2024, the company reported a 6% increase in revenue to R9.64 billion, while gross profit rose by 1% to R3.22 billion. Trading profit grew by 4% to R1.23 billion, but operating profit decreased by 6% to R1.06 billion. Headline earnings per share (HEPS) increased by 10% to 616.6 cents, whereas basic earnings per share (EPS) fell by 4% to 539.6 cents. Total assets increased to R8.35 billion, and net asset value per share rose to 3,688.1 cents. The company maintained its interim dividend at 125.0 cents per share and increased the final dividend to 150.0 cents. Segment-wise, revenue grew across all sectors, with the largest increases in OTC and Hospital segments. However, trading profit in the Hospital segment declined by 16%, while other segments saw profit growth, particularly in OTC and Prescription segments, each up by 10%.

AIP | 9.02% OPEN | 6093c HIGH | 6600c LOW | 6071c CLOSE | 6596c TIME | 07:05

GLOBE TRADE CENTRE SA – Reviewed H1 2024 Results

In the first half of 2024, rental activity revenue for the company increased by 3% to EUR 93 million, with the gross margin rising by 4% to EUR 65 million. Funds From Operations (FFO I) reached EUR 36 million, translating to EUR 0.06 per share. EPRA Net Tangible Assets (NTA) grew slightly to EUR 1,237 million, with a per-share value of EUR 2.15. The Net Loan-to-Value (LTV) improved to 48.2%, and the company held EUR 89 million in cash, with an additional EUR 31 million on escrow accounts. Profit after tax was EUR 31.5 million, equating to EUR 0.05 per share.

GTC | 0.00% OPEN | 4000c HIGH | 4000c LOW | 4000c CLOSE | 4000c TIME | 07:05

EXPECTED COMPANY REPORTING SCHEDULE

COMPANY	CODE	RELEASE	DATE
Gold Fields	GFI	Interim	23 Aug '24
BHP	BHG	Final	27 Aug '24
Sibanye Stillwater	SSW	Interim	29 Aug '24
Santam	SNT	Interim	29 Aug '24
Truworths	TRU	Final	30 Aug '24

BANK AND OTHER SELECTE PREFERENCE SHARES

COMPANY	CODE	CLOSE	CLEAN YIELD	NEXT LDT (Est.)
Investec Limited	INPR	8800	11.24	Thu, 06 Jun '24
Standard Bank	SBPP	9000	11.15	Thu, 05 Sep '24
Absa	ABSP	80251	11.48	Thu, 12 Sep '24
Capitec	CPIP	10010	9.69	Thu, 19 Sep '24
Steinhoff	SHFF	9734	10.47	Thu, 17 Oct '24
Grindrod	GNDP	9224	12.22	Thu, 19 Sep '24
Netcare	NTCP	8180	11.82	Thu, 31 Oct '24
Discovery	DSBP	9696	11.91	Thu, 19 Sep '24
Invicta	IVTP	---	13.41	Thu, 27 Jun '24

LOCAL EQUITIES | JSE MID CAP COMPANIES (Cents Per Share)

COMPANY	CODE	CLOSE	PREVIOUS	1D%	1M%	YTD%
Aspen Pharmacare Hldgs Ltd	APN	23453	23384	0.30	-0.62	15.25
African Rainbow Min Ltd	ARI	18895	19224	-1.71	-13.33	-5.53
AVI Ltd	AVI	9948	9971	-0.23	1.94	21.21
Barloworld Ltd	BAW	9300	9318	-0.19	5.68	17.72
Bidvest Ltd	BVT	27800	28200	-1.42	2.27	10.19
Bytes Technology Grp PLC	BYI	11230	11338	-0.95	-2.38	-21.58
Capital&Counties Prop plc	CCO	3436	3301	4.09	-3.29	5.72
Clicks Group Ltd	CLS	36121	35950	0.48	5.03	10.90
Dis-Chem Pharmacies Ltd	DCP	3635	3682	-1.28	2.42	18.44
Exxaro Resources Ltd	EXX	16610	16632	-0.13	-14.99	-18.77
Fortress Real Est INV B	FFB	1785	1762	1.31	6.89	24.30
Growthpoint Prop Ltd	GRT	1352	1342	0.75	11.83	15.75
Harmony GM Co Ltd	HAR	19188	19953	-3.83	15.24	60.45
Hammerson plc	HMN	661	642	2.96	-6.51	-2.79
Investec Ltd	INL	13147	13303	-1.17	-4.32	4.68
Investec plc	INP	13194	13322	-0.96	-4.83	4.76
Italtile Ltd	ITE	1290	1245	3.61	10.63	15.18
Life Healthc Grp Hldgs Ltd	LHC	1406	1400	0.43	9.84	-23.46
MultiChoice Group Ltd	MCG	11027	10994	0.30	1.17	36.10
Montauk Renewables Inc	MKR	8100	8020	1.00	-18.21	-52.91
Mr Price Group Ltd	MRP	23219	23500	-1.20	11.10	48.07
Momentum Met Hldgs Ltd	MTM	2743	2750	-0.25	18.44	25.31
Ninety One Plc	N91	3868	3885	-0.44	-3.11	-10.30
Nedbank Group Ltd	NED	28811	29926	-3.73	11.92	33.24
Northam Platinum Hldgs Ltd	NPH	12256	12539	-2.26	-3.75	-12.73
NEPI Rockcastle N.V.	NRP	13906	13990	-0.60	5.81	10.03
Netcare Limited	NTC	1358	1344	1.04	12.51	-4.63
Ninety One Limited	NY1	3814	3829	-0.39	-2.23	-11.24
Old Mutual Limited	OMU	1234	1237	-0.24	1.48	-5.51
OUTsurance Group Ltd	OUT	4727	4797	-1.46	0.06	12.01
Pick n Pay Stores Ltd	PIK	2370	2358	0.51	3.95	1.85
Pepkor Holdings Ltd	PPH	2096	2069	1.30	4.96	6.78
Quilter Plc	QLT	3342	3308	1.03	14.65	37.64
Redefine Properties Ltd	RDF	446	445	0.22	7.21	15.84
Remgro Ltd	REM	13848	13988	-1.00	1.97	-14.77
Resilient REIT Limited	RES	5428	5357	1.33	11.02	22.56
Reinet Investments S.C.A	RNI	47302	47151	0.32	4.19	1.46
Sappi Ltd	SAP	4662	4664	-0.04	-13.73	5.48
Santam Limited	SNT	35023	35223	-0.57	6.63	22.21
The Spar Group Ltd	SPP	12363	12437	-0.59	1.75	4.86
Sirius Real Estate Ltd	SRE	2247	2210	1.67	1.08	1.44
Tiger Brands Ltd	TBS	22499	22396	0.46	2.27	11.77
Transaction Capital Ltd	TCP	291	295	-1.36	2.46	-63.53
The Foschini Group Limited	TFG	14100	14089	0.08	4.51	27.07
Thungela Resources Ltd	TGA	11531	11884	-2.97	-0.81	-25.03
Telkom SA SOC Ltd	TKG	2674	2600	2.85	18.21	-10.09
Truworths Int Ltd	TRU	9733	9731	0.02	9.62	30.91
Woolworths Holdings Ltd	WHL	6382	6408	-0.41	6.54	-11.61
Zeda Limited	ZZD	1255	1230	2.03	3.38	-1.57

LOCAL EQUITIES | JSE SMALL CAP COMPANIES (Cents Per Share)

COMPANY	CODE	CLOSE	PREVIOUS	1D%	1M%	YTD%
ArcelorMittal SA Limited	ACL	119	125	-4.80	-13.77	-27.44
ADVTECH Ltd	ADH	3235	3176	1.86	7.87	31.83
Altron Limited A	AEL	1752	1736	0.92	12.89	70.93
AECI Limited	AFE	10650	10650	0.00	0.00	-2.91
Alexander Forbes Grp Hldgs	AFH	660	658	0.30	2.33	0.00
Afrimat Limited	AFT	6357	6400	-0.67	-7.47	0.90
African Rainbow Cap Inv	AIL	602	611	-1.47	-7.38	23.11
Adcock Ingram Hldgs Ltd	AIP	6596	6050	9.02	14.57	9.75
Astral Foods Ltd	ARL	16855	17221	-2.13	2.42	15.00
Attacq Limited	ATT	1130	1111	1.71	5.61	22.56
Brait PLC	BAT	97	92	5.43	28.42	-46.70
Blue Label Telecoms Ltd	BLU	515	505	1.98	19.77	32.73
Burstone Group	BTN	791	795	-0.50	2.06	-1.13
Coronation Fund Mngrs Ld	CML	3909	3928	-0.48	4.24	25.45
Curro Holdings Limited	COH	1291	1281	0.78	5.39	10.82
Cashbuild Ltd	CSB	16400	16875	-2.81	-2.61	-1.76
DRD Gold Ltd	DRD	1603	1691	-5.20	-7.61	1.65
Datatec Ltd	DTC	3562	3610	-1.33	-1.17	-12.05
Emira Property Fund Ltd	EMI	1044	1035	0.87	-3.33	22.11
Equites Prop Fund Ltd	EQU	1327	1325	0.15	1.14	-4.87
Famous Brands Ltd	FBR	5700	5709	-0.16	9.09	-1.61
Fairvest Limited B	FTB	423	416	1.68	6.28	22.97
Grindrod Ltd	GND	1577	1570	0.45	0.77	37.61
Hosken Cons Inv Ltd	HCI	18012	17776	1.33	-5.99	-11.10
Hudaco Industries Ltd	HDC	18500	18125	2.07	4.58	15.17
Hyprop Inv Ltd	HYP	3616	3570	1.29	15.86	16.23
JSE Ltd	JSE	11000	11053	-0.48	6.83	19.00
KAP Industrial Hldgs Ltd	KAP	317	321	-1.25	6.02	20.99
Karooooo Ltd	KRO	68000	64001	6.25	7.09	43.16
PSG Konsult Limited	KST	1670	1674	-0.24	-2.28	8.79
Libstar Holdings Ltd	LBR	430	430	0.00	14.06	22.86
Lighthouse Properties plc	LTE	818	818	0.00	0.25	11.29
Industrials REIT Limited	MLI	1.6	1.5	6.67	45.45	128.57
MAS P.L.C	MSP	1824	1797	1.50	2.93	5.37
Metair Investments Ltd	MTA	1367	1324	3.25	-1.87	-22.99
Motus Holdings Ltd	MTH	11312	11195	1.05	11.34	11.45
Murray & Roberts Hldgs	MUR	311	300	3.67	24.40	108.72
Oceana Group Ltd	OCE	6914	7045	-1.86	1.56	-2.16
Omnia Holdings Ltd	OMN	6364	6220	2.32	-4.87	-2.65
Pan African Resource plc	PAN	704	719	-2.09	10.34	72.13
PPC Limited	PPC	406	402	1.00	11.85	1.75
Raubex Group Ltd	RBX	4599	4620	-0.45	3.35	65.91
RFG Holdings Limited	RFG	1588	1580	0.51	6.01	17.63
Reunert Ltd	RLO	7570	7510	0.80	5.42	26.29
SA Corp Real Estate Ltd	SAC	271	269	0.74	3.04	16.81
Super Group Ltd	SPG	2640	2605	1.34	-12.64	-11.26
Stor-Age Prop REIT Ltd	SSS	1380	1371	0.66	4.78	5.67
Southern Sun LTD	SSU	625	620	0.81	5.04	19.05
Sun International Ltd	SUI	4128	4018	2.74	13.72	0.68
Tharisa plc	THA	1930	1901	1.53	0.00	27.73
Tsogo Sun Gaming Ltd	TSG	1158	1151	0.61	0.70	-5.47
Vukile Property Fund Ltd	VKE	1715	1697	1.06	3.50	21.46
Wilson Bayly Hlm-Ovc Ltd	WBO	18953	18800	0.81	6.50	45.73

10-YEAR BOND YIELD | SELECTED ITEMS (Basis Point Change)

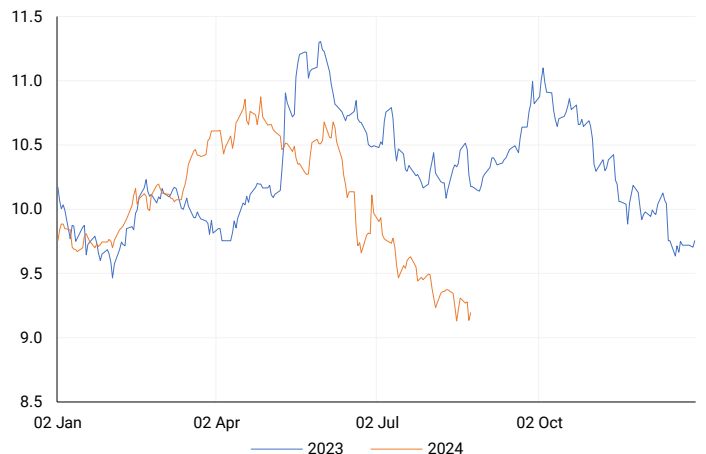
REGION	YIELD	1D	1M	1Y
United States	3.84%	4	-41	--
United Kingdom	3.96%	7	-20	-68
Germany	2.24%	5	-25	-40
Japan	0.88%	1	-16	--
South African 10Y	9.21%	9	-25	-108

GLOBAL INTEREST RATES | SELECTED ITEMS

REGION	DATE CHANGED	CURRENT RATE
United States	Wed, 26 Jul '23	5.25%-5.50%
United Kingdom	Thu, 03 Aug '23	5.25%
European	Thu, 27 Jul '23	4.25%
SA Repo Rate	Thu, 25 May '23	8.25%
SA Prime Rate	Thu, 25 May '23	11.75%

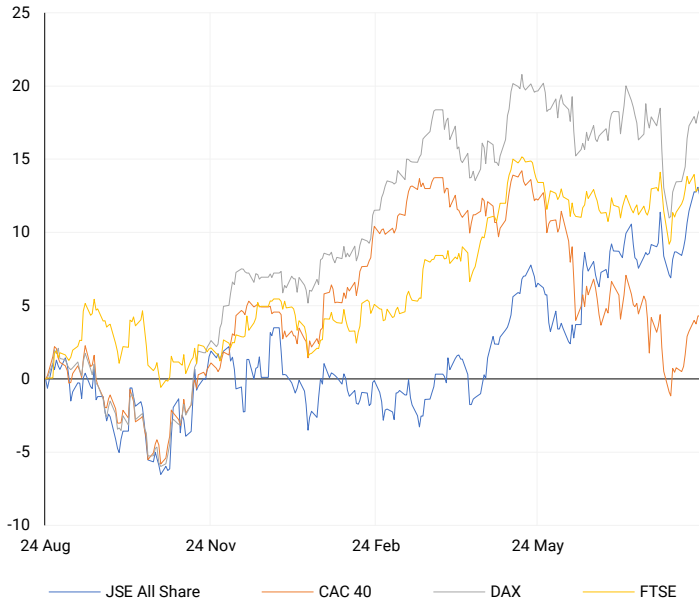
SOUTH AFRICAN 10-YEAR

2023 vs 2024 to date



EUROPEAN INDICES

Normalised percentage performances



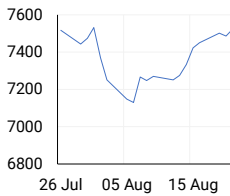
EUROPEAN MARKET SUMMARY

SELECTED ITEMS

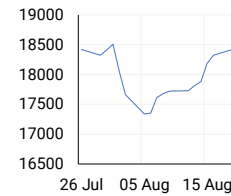
European stocks closed higher on Thursday, with the British pound reaching a 13-month high of \$1.3127 after data revealed increased U.K. business activity. In the eurozone, PMI data indicated a rise in business activity despite slower wage growth, which could lead to a potential rate cut by the European Central Bank (ECB) in September. Minutes from the ECB's last meeting, released on Thursday, showed that while policymakers were not ready to cut rates in July, they viewed September as the next viable opportunity for easing.

EUROPEAN INDICES	CLOSE	PREVIOUS	1D%	5D%	1M%	YTD%
CAC 40	7524.11	7524.72	-0.01	1.36	-1.28	-0.25
DAX 30	18493.39	18448.95	0.24	1.71	1.44	10.40
Eurostoxx 50	4883.00	4885.40	-0.05	1.39	-0.49	7.99
FTSE	8288.00	8283.43	0.06	-0.71	1.09	7.17

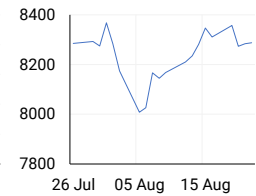
CAC 40



DAX

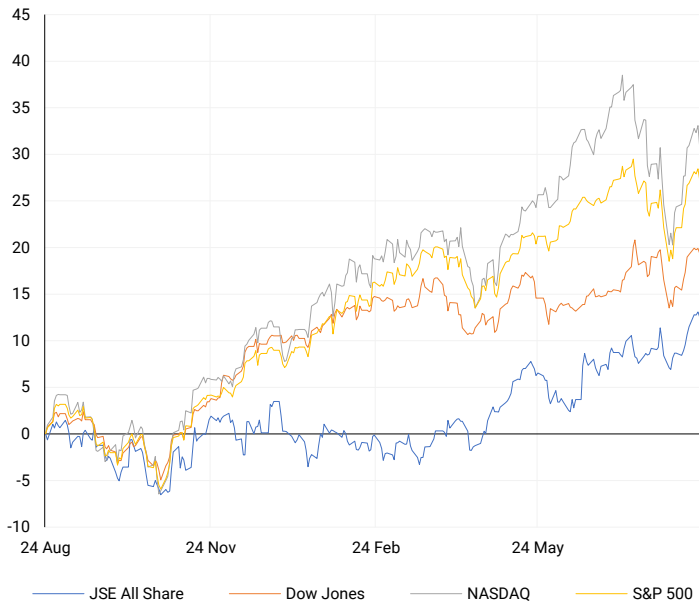


FTSE



AMERICAN INDICES

Normalised percentage performances



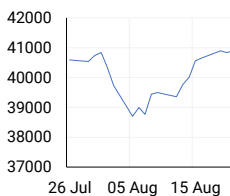
AMERICAN MARKET SUMMARY

SELECTED ITEMS

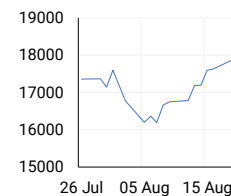
All three major U.S. stock indexes fell on Thursday, dragged down by technology stocks as Treasury yields rose amid easing recession fears. This decline coincided with the Jackson Hole Economic Symposium, where global central bank officials gathered. Investors are keenly awaiting Federal Reserve Chair Jerome Powell's address today for insights on the timing and extent of the Fed's policy easing. The release of higher U.S. jobless claims, alongside a sharp downward revision of payrolls, suggested a gradually softening labour market, reducing recession concerns and strengthening the case for a 25 basis point rate cut at the Fed's September meeting.

AMERICAN INDICES	CLOSE	PREVIOUS	1D%	5D%	1M%	YTD%
Dow Jones	40712.78	40890.49	-0.43	0.37	0.74	8.02
Nasdaq	17619.35	17918.99	-1.67	0.14	-2.16	17.37
S&P 500	5570.64	5620.85	-0.89	0.49	0.11	16.79
US VIX	17.55	16.27	7.87	15.23	17.71	40.96

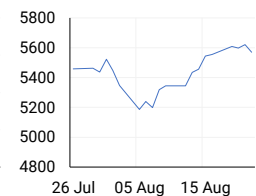
DOW JONES



NASDAQ

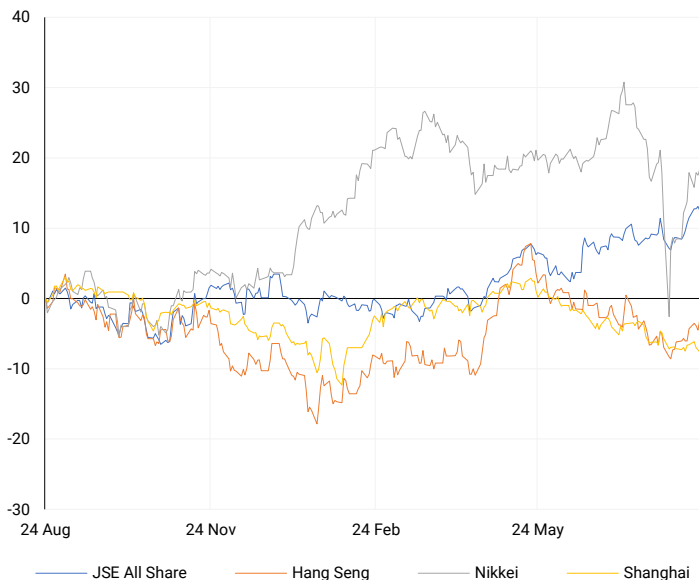


S&P 500



ASIAN INDICES

Normalised percentage performances



ASIAN MARKET SUMMARY

SELECTED ITEMS

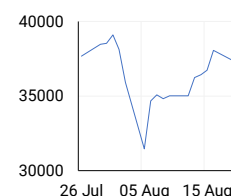
Asia-Pacific markets mostly declined this morning. In Japan, headline inflation remained steady at 2.8% in July, while core inflation, excluding fresh food, was 2.7%, slightly higher than June's 2.6% and in line with expectations. However, the "core-core" inflation rate, which excludes both fresh food and energy and is closely monitored by the Bank of Japan, dropped to 1.9% from 2.2% in June, marking its lowest level since September 2022. Bank of Japan Governor Kazuo Ueda addressed the country's parliament, stating that the central bank will "remain highly vigilant" to market movements, noting that markets remained unstable.

ASIAN INDICES	CLOSE	PREVIOUS	1D%	5D%	1M%	YTD%
Hang Seng	17641.00	17391.01	1.44	3.11	0.03	3.48
Nikkei 225	38211.01	37951.80	0.68	4.04	-3.51	14.18
Shanghai	2848.77	2856.58	-0.27	-0.99	-3.89	-4.24

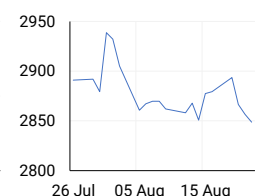
HANG SENG



NIKKEI



SHANGHAI



COMMODITIES MARKET SUMMARY

SELECTED ITEMS

Gold prices dropped this morning, pulling back from the record highs reached earlier this week as the U.S. dollar strengthened ahead of key U.S. jobs data and a speech by the Federal Reserve Chair, which could provide more clarity on the future of interest rates. Meanwhile, the recent sharp decline in crude oil prices paused as anticipation of a Federal Reserve rate cut helped offset concerns arising from weak economic data from both the United States and China.

COMMODITY	LAST	CLOSE	% CHG	1D%	5D%	YTD%
Brent Crude	77.38	77.14	0.31	1.37	-4.72	0.08
Gold	2493.80	2484.62	0.37	-1.10	1.15	20.44
Palladium	935.95	929.14	0.73	-2.69	-1.70	-15.32
Platinum	956.00	949.20	0.72	-2.10	-0.78	-3.85
Silver	29.29	28.99	1.03	-2.06	2.19	21.87

BRENT CRUDE

One-year



PLATINUM

One-year



GOLD

One-year



CURRENCY PAIR	LAST	CLOSE	% CHG	1D%	5D%	YTD%
USDZAR	17.96	18.02	-0.30	0.98	0.05	-1.68
GBPZAR	23.58	23.57	0.03	1.00	1.73	1.18
EURZAR	20.00	20.01	-0.06	0.57	1.24	-0.90
AUDZAR	12.09	12.08	0.07	0.46	1.41	-3.04
EURUSD	1.11	1.11	0.17	-0.34	1.25	0.67
USDJPY	145.43	146.29	-0.59	0.75	-2.01	3.72
GBPUSD	1.31	1.31	0.25	0.01	1.82	2.82
USDCHF	0.85	0.85	-0.12	0.03	-2.41	1.23

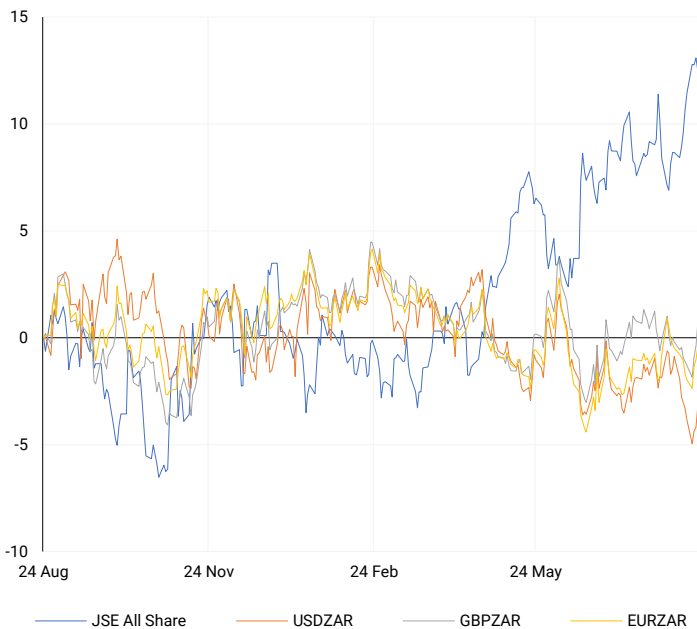
CURRENCY MARKET SUMMARY

SELECTED ITEMS

The South African rand weakened against a stronger dollar on Thursday as investors anticipated Federal Reserve Chair Jerome Powell's upcoming speech for clues on the future interest rate direction in the U.S. The dollar strengthened as traders absorbed new economic data and looked forward to the Fed's confirmation today that interest rate cuts may be imminent.

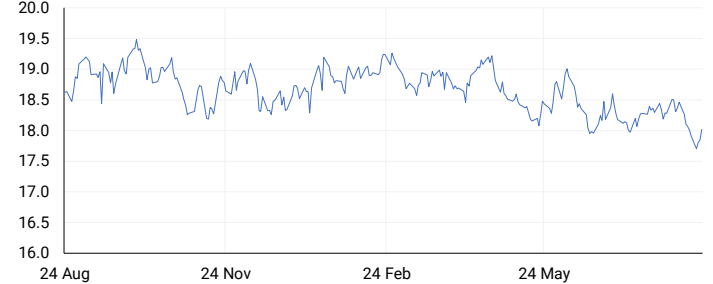
CURRENCY PAIRS vs JSE ALL SHARE

Normalised percentage performances



USDZAR

One-year



EURUSD

One-year



SOURCES | JSE, IRESS, MONEYWEB, CNBC, BBC, CNN

Disclaimer: This note is prepared for Sanlam Private Wealth (Pty) Ltd, by K2013143132 (Pty) Ltd trading as ThompsonGreen. ThompsonGreen is an independent company contracted to Sanlam Private Wealth (Pty) Ltd. The views expressed in this note are those of ThompsonGreen and/or its analysts and not necessarily the views of Sanlam Private Wealth (Pty) Ltd, Sanlam or any officer or agent thereof. K2013143132 (Pty) Ltd trading as ThompsonGreen is a research house and not a registered broker, financial adviser or financial service provider. Our editors and customer services teams also do not give personal investment advice. The information in this document is general advice only and may not be appropriate to your particular investment objectives, financial situation or particular needs. Before investing, or if you are in any doubt about your personal situation, you should seek professional advice from a stockbroker or independent financial adviser authorised by the Financial Sector Conduct Authority.