

GLOBAL OVERVIEW | SELECTED INDICES

SOUTH AFRICAN INDICES						
	CLOSE	PREVIOUS	1D%	5D%	1M%	YTD%
All Share	83749.90	84239.42	-0.58	-0.71	3.14	8.92
Top 40	76290.40	76784.41	-0.64	-0.88	2.97	8.22
Financial 15	20933.00	21059.21	-0.60	1.45	7.22	17.12
Industrial 25	114315.00	113870.79	0.39	-0.30	5.16	10.22
Resource 10	56092.40	57510.95	-2.47	-4.82	-6.01	-2.50
Mid Cap	87739.80	88660.05	-1.04	-1.04	2.70	9.11
Small Cap	85631.00	85744.44	-0.13	1.17	6.25	18.12
Banks	13230.20	13328.57	-0.74	1.33	6.78	20.84
Retailers	7394.29	7449.69	-0.74	0.46	10.26	18.62
Property (J253) - TR	2304.49	2304.49	0.00	2.44	9.33	23.65

AMERICAN INDICES						
	CLOSE	PREVIOUS	1D%	5D%	1M%	YTD%
Dow Jones	41563.08	41335.05	0.55	0.94	2.01	10.28
Nasdaq	17713.63	17516.43	1.13	-0.92	3.30	18.00
S&P 500	5648.40	5591.96	1.01	0.24	3.90	18.42
US VIX	15.00	15.65	-4.15	-5.42	-15.21	20.48

EUROPEAN INDICES						
	CLOSE	PREVIOUS	1D%	5D%	1M%	YTD%
CAC 40	7630.95	7640.95	-0.13	0.71	2.09	1.16
DAX 30	18906.92	18912.57	-0.03	1.47	2.69	12.87
Eurostoxx 50	4957.45	4960.60	-0.06	1.02	2.39	9.64
FTSE	8376.63	8379.64	-0.04	0.59	1.24	8.32

ASIAN INDICES						
	CLOSE	PREVIOUS	1D%	5D%	1M%	YTD%
Hang Seng	17989.07	17786.32	1.14	2.14	5.80	5.52
Nikkei 225	38647.75	38362.53	0.74	0.74	0.32	15.49
Shanghai	2842.21	2823.11	0.68	-0.43	-1.29	-4.46

EARLY MORNING MARKETS						
	LAST	CLOSE	% CHG	1D%	5D%	YTD%
TENCENT	377.00	382.00	-1.31	1.17	1.70	31.63
BHP AUS	4043.00	4077.00	-0.83	0.59	0.25	-19.12

NOTE : 5D% and 1M% are rolling percentage moves

INTERNATIONAL ECONOMIC CALENDAR | SELECTED EVENTS

TIME	AREA	TODAY'S EVENTS & RELEASES	PERIOD	EXP.	PREV.
11:00	ZA	ABSA Manufacturing PMI	Aug	53.00	52.40
--	ZA	Total New Vehicle Sales	Aug	45.00K	44.23K
--	--	--	--	--	--
--	--	--	--	--	--
--	--	--	--	--	--

TIME	AREA	PREVIOUS SESSION'S RELEASES	PERIOD	EXP.	ACT.
8:00	ZA	M3 Money Supply y/y	Jul	--	5.88%
8:00	ZA	Private Sector Credit y/y	Jul	4.40%	3.50%
11:00	EA	Inflation Rate y/y Flash	Aug	2.20%	2.20%
14:00	ZA	Balance of Trade	Jul	R18.0B	R17.61B
14:00	ZA	Budget Balance	Jul	R-150.0B	R79.95B

JSE ALL SHARE | BEST AND WORST ONE-DAY PERFORMERS

BEST ONE-DAY % PERFORMERS						
	CODE	CLOSE	1D%	5D%	YTD%	
Montauk Renewables Inc	MKR	8631	5.26	5.77	-49.82	
Karoo000 Ltd	KRO	69200	5.00	-0.35	45.69	
Tharisa plc	THA	1974	4.33	2.17	30.64	
Pick n Pay Stores Ltd	PIK	2430	3.54	1.12	4.43	
Brait PLC	BAT	115	2.68	7.48	-36.81	
African Rainbow Cap Inv	AIL	618	2.66	1.31	26.38	

WORST ONE-DAY % PERFORMERS						
	CODE	CLOSE	1D%	5D%	YTD%	
Northam Platinum Hldgs Ltd	NPH	10543	-9.28	-15.76	-24.92	
Impala Platinum Hlgs Ltd	IMP	7700	-6.52	-12.97	-15.63	
Blue Label Telecoms Ltd	BLU	493	-6.10	-4.83	27.06	
Anglo American Plat Ltd	AMS	61558	-6.02	-11.50	-36.14	
Sibanye Stillwater Ltd	SSW	1723	-5.74	-11.19	-30.80	

DIVIDEND DATA

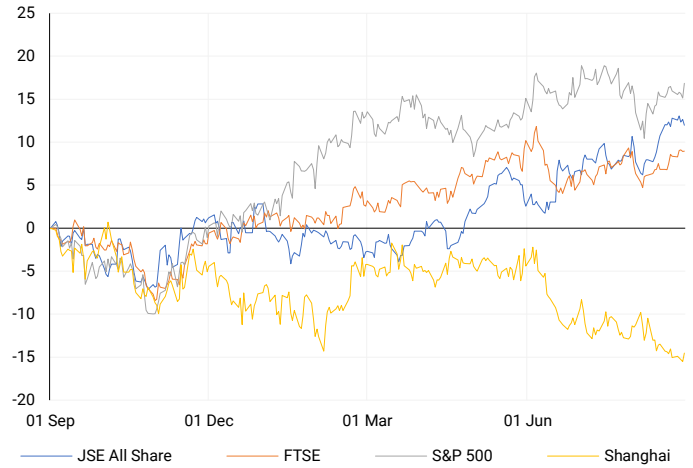
COMPANY	CODE	EXPECTED DIVIDEND	COMPANY	CODE	EXPECTED DIVIDEND
Nedbank Group	NED	971 ZARc	Lighthouse Properties plc	LTE	1.22 EURc
Merafe Resources	MRF	20 ZARc	Capital & Regional plc	CRP	2.85 GBPp
Resilient REIT	RES	218.97 ZARc	--	--	--
Homechoice International plc	HIL	95 ZARc	--	--	--
Standard Bank Group	SBPP	451.1 ZARc	--	--	--

SOURCES | JSE, IRESS, MONEYWEB, CNBC, BBC, CNN

PLEASE SEE THE BOTTOM OF THE LAST PAGE FOR THE FULL DISCLAIMER

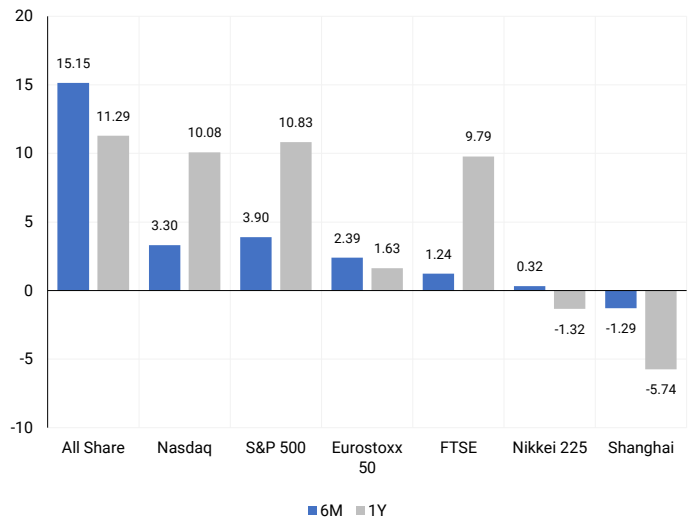
INTERNATIONAL INDICES

Normalised percentage performances - In rand terms



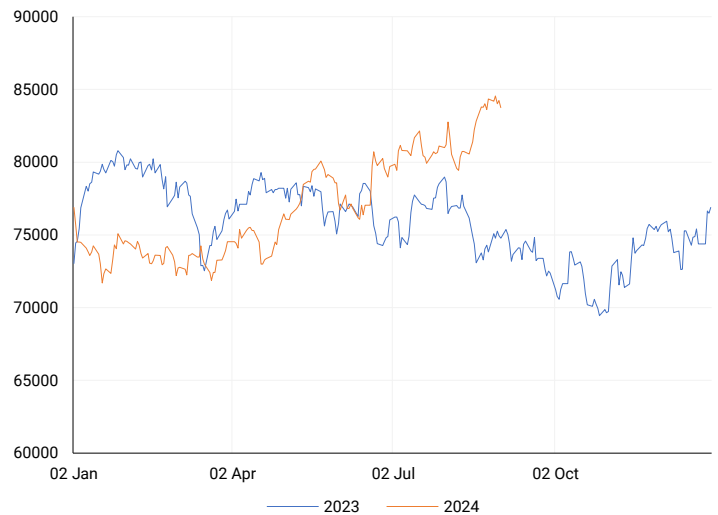
INTERNATIONAL INDICES

6-month & 1-year percentage performances



JSE ALL SHARE INDEX

2023 v 2024 to date



Last date to trade Tue, 03 September

LOCAL EQUITIES | JSE LARGE CAP COMPANIES (Cents Per Share)

COMPANY	CLOSE	PREVIOUS	1D%	5D%	1M%	YTD%
Absa Group Limited	17586	17692	-0.60	2.94	10.75	7.42
Anglo American plc	51565	52500	-1.78	-2.47	-3.58	8.90
Anglo American Plat Ltd	61558	65503	-6.02	-11.50	-10.86	-36.14
Anglogold Ashanti Ltd	52891	53688	-1.48	-4.01	6.06	49.66
Anheuser-Busch InBev SA NV	108472	109099	-0.57	-1.07	-0.80	-9.62
BHP Group Limited	48690	48694	-0.01	-0.32	-1.36	-23.13
BID Corporation Ltd	44914	45615	-1.54	3.84	1.13	5.27
British American Tob plc	66010	65650	0.55	2.06	2.05	21.90
Compagnie Fin Richemont	279763	279500	0.09	-2.88	0.56	8.96
Capitec Bank Hldgs Ltd	292594	294921	-0.79	1.31	5.77	44.39
Discovery Ltd	15300	15387	-0.57	-0.14	10.41	6.49
Firststrand Ltd	8598	8672	-0.85	1.03	6.38	16.96
Gold Fields Ltd	24794	25300	-2.00	-5.24	-17.50	-10.74
Glencore plc	9335	9347	-0.13	-3.11	-4.91	-16.39
Impala Platinum Hlgs Ltd	7700	8237	-6.52	-12.97	-12.69	-15.63
Kumba Iron Ore Ltd	35290	36611	-3.61	-2.11	-8.81	-42.60
Mondi plc	34485	34489	-0.01	0.68	-4.25	-5.00
MTN Group Ltd	8886	9256	-4.00	-7.37	15.66	-23.06
Naspers Ltd -N-	367775	359356	2.34	-0.60	5.97	17.58
Prosus N.V.	66148	64659	2.30	-0.34	4.66	18.04
South32 Limited	3730	3705	0.67	1.08	1.77	-11.59
Standard Bank Group Ltd	24000	24255	-1.05	1.01	8.84	15.33
Shoprite Holdings Ltd	31008	31076	-0.22	0.78	4.05	12.74
Sanlam Limited	8889	8906	-0.19	3.76	11.42	22.10
Sasol Limited	13758	14310	-3.86	-6.97	-4.42	-25.75
Sibanye Stillwater Ltd	1723	1828	-5.74	-11.19	-11.19	-30.80
Vodacom Group Ltd	11004	11150	-1.31	-3.20	9.59	3.81

SOUTH AFRICAN MARKET SUMMARY

SELECTED ITEMS

On the Johannesburg Stock Exchange, the Top-40 index closed down by 0.64%. Inflation in South Africa appears to be easing, with July's annual producer inflation dropping to 4.2% and consumer inflation falling to a three-year low of 4.6%, nearing the central bank's target range. This has raised expectations of a potential interest rate cut next month, the first in four years. Sanlam's share price rose by over 4% after a positive trading update, while Truworths reported mixed performance across its domestic, Africa, and UK operations for the full year ending June.

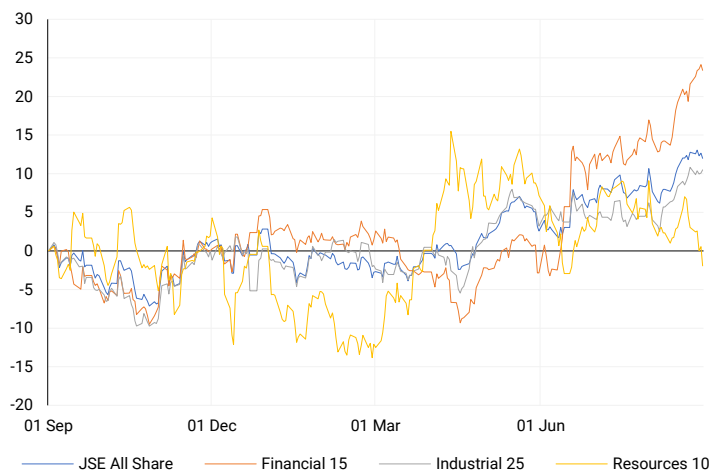
JSE ALL SHARE

One-year



LOCAL INDICES

Normalised percentage performances



LOCAL SENS ANNOUNCEMENTS

SELECTED RELEASE

NORTHAM PLATINUM HOLDINGS LIMITED – Audited group annual financial results

The financial results for the period ending 30 June 2024 show a significant decline compared to the same period in 2023. Sales revenue dropped by 22.2%, while operating profit plummeted by 68.8%. The operating margin decreased by nearly 60%, and basic earnings per share fell by 29.6%. Headline earnings per share saw a drastic reduction of 81.6%, and dividends per share were cut by 71.7%. EBITDA, a measure of overall profitability, also fell by 62%, with the EBITDA margin dropping by 51.1%.

NPH | -9.28% OPEN | 11815c HIGH | 11815c LOW | 10424c CLOSE | 10543c TIME | 07:05

TRUWORTHS INTERNATIONAL LIMITED – Voluntary trading statement

The Group estimates that its earnings per share (EPS) for the current period will be between 1 022 and 1 057 cents, reflecting an increase of 15% to 19% compared to the previous period. However, its headline earnings per share (HEPS) are expected to decrease by 5% to 9%, falling within the range of 795 to 830 cents.

TRU | -2.96% OPEN | 10036c HIGH | 10162c LOW | 9481c CLOSE | 9739c TIME | 13:30

AFROCENTRIC INVESTMENT CORPORATION LIMITED – Trading statement

AfroCentric shareholders are informed that the earnings per share (EPS) for the current reporting period are expected to be between 5.14 and 8.20 cents, representing a decline of 73.2% to 83.2% compared to the 30.70 cents per share in the previous period. Meanwhile, headline earnings per share (HEPS) are anticipated to be between 38.51 and 42.13 cents, showing an increase of 6.4% to 16.4% compared to the 36.34 cents per share in the previous period.

ACT | 16.67% OPEN | 291c HIGH | 350c LOW | 281c CLOSE | 350c TIME | 12:10

KAP LIMITED – Audited annual financial statements

For the year ended 30 June 2024, revenue decreased by 2% to R29 062 million, while operating profit before capital items fell by 11% to R2 250 million. Headline earnings per share dropped by 4% to 45.3 cents. However, earnings per share more than doubled, rising by 106% to 43.8 cents, mainly due to a significant non-cash impairment of intangibles in the previous year. Net asset value per share increased by 7% to 500 cents. The board of directors has decided not to declare a dividend for the year.

KAP | -1.78% OPEN | 334c HIGH | 337c LOW | 305c CLOSE | 332c TIME | 07:05

EXPECTED COMPANY REPORTING SCHEDULE

COMPANY	CODE	RELEASE	DATE
Aspen	APN	Final	3 Sep '24
Cashbuild	CSB	Final	4 Sep '24
Woolworths	WHL	Final	4 Sep '24
Shoprite	SHP	Final	5 Sep '24
Bell Equipment	BEL	Interim	9 Sep '24

BANK AND OTHER SELECTE PREFERENCE SHARES

COMPANY	CODE	CLOSE	CLEAN YIELD	NEXT LDT (Est.)
Investec Limited	INPR	8850	11.24	Thu, 06 Jun '24
Standard Bank	SBPP	8951	11.15	Thu, 05 Sep '24
Absa	ABSP	81601	11.48	Thu, 12 Sep '24
Capitec	CPIP	9672	9.69	Thu, 19 Sep '24
Steinhoff	SHFF	9734	10.47	Thu, 17 Oct '24
Grindrod	GNDP	9048	12.22	Thu, 19 Sep '24
Netcare	NTCP	8200	11.82	Thu, 31 Oct '24
Discovery	DSBP	9698	11.91	Thu, 19 Sep '24
Invicta	IVTP	---	13.41	Thu, 27 Jun '24

LOCAL EQUITIES | JSE MID CAP COMPANIES (Cents Per Share)

COMPANY	CODE	CLOSE	PREVIOUS	1D%	1M%	YTD%
Aspen Pharmacare Hldgs Ltd	APN	23999	23791	0.87	-1.18	17.93
African Rainbow Min Ltd	ARI	17400	18217	-4.48	-17.32	-13.00
AVI Ltd	AVI	10174	10098	0.75	4.47	23.97
Barloworld Ltd	BAW	9395	9402	-0.07	2.11	18.92
Bidvest Ltd	BVT	29120	29480	-1.22	7.95	15.42
Bytes Technology Grp PLC	BYI	11211	11165	0.41	-4.18	-21.72
Capital&Counties Prop plc	CCO	3405	3370	1.04	-4.17	4.77
Clicks Group Ltd	CLS	37369	36633	2.01	8.22	14.73
Dis-Chem Pharmacies Ltd	DCP	3500	3538	-1.07	-0.82	14.04
Exxaro Resources Ltd	EXX	16000	16320	-1.96	-15.79	-21.75
Fortress Real Est INV B	FFB	1930	1910	1.05	13.80	34.40
Growthpoint Prop Ltd	GRT	1410	1407	0.21	15.95	20.72
Harmony GM Co Ltd	HAR	17827	18722	-4.78	7.39	49.07
Hammerson plc	HMN	669	663	0.90	-0.15	-1.62
Investec Ltd	INL	13562	13546	0.12	-4.65	7.99
Investec plc	INP	13549	13436	0.84	-5.77	7.57
Italtile Ltd	ITE	1259	1250	0.72	7.61	12.41
Life Healthc Grp Hldgs Ltd	LHC	1437	1409	1.99	7.08	-21.77
MultiChoice Group Ltd	MCG	11024	11061	-0.33	1.14	36.07
Montauk Renewables Inc	MKR	8631	8200	5.26	-17.80	-49.82
Mr Price Group Ltd	MRP	24240	24252	-0.05	14.18	54.58
Momentum Met Hldgs Ltd	MTM	2791	2786	0.18	6.36	27.50
Ninety One Plc	N91	3913	3909	0.10	-2.95	-9.25
Nedbank Group Ltd	NED	29669	29817	-0.50	9.96	37.21
Northam Platinum Hldgs Ltd	NPH	10543	11621	-9.28	-22.91	-24.92
NEPI Rockcastle N.V.	NRP	14423	14354	0.48	6.22	14.12
Netcare Limited	NTC	1358	1359	-0.07	4.70	-4.63
Ninety One Limited	NY1	3893	3914	-0.54	-1.72	-9.40
Old Mutual Limited	OMU	1290	1299	-0.69	7.77	-1.23
OUTsurance Group Ltd	OUT	4773	4758	0.32	1.21	13.10
Pick n Pay Stores Ltd	PIK	2430	2347	3.54	5.65	4.43
Pepkor Holdings Ltd	PPH	2190	2188	0.09	8.52	11.56
Quilter Plc	QLT	3239	3228	0.34	5.54	33.40
Redefine Properties Ltd	RDF	476	477	-0.21	14.70	23.64
Remgro Ltd	REM	14451	14653	-1.38	6.26	-11.06
Resilient REIT Limited	RES	5717	5811	-1.62	14.52	29.08
Reinet Investments S.C.A	RNI	47827	47999	-0.36	-0.16	2.59
Sappi Ltd	SAP	4542	4591	-1.07	-15.01	2.76
Santam Limited	SNT	35155	34826	0.94	8.68	22.68
The Spar Group Ltd	SPP	12813	12776	0.29	2.50	8.68
Sirius Real Estate Ltd	SRE	2265	2260	0.22	1.12	2.26
Tiger Brands Ltd	TBS	23560	23446	0.49	5.81	17.05
Transaction Capital Ltd	TCP	274	275	-0.36	-3.18	-65.66
The Foschini Group Limited	TFG	14489	14580	-0.62	7.33	30.58
Thungela Resources Ltd	TGA	11620	11847	-1.92	-2.31	-24.45
Telkom SA SOC Ltd	TKG	2826	2827	-0.04	21.03	-4.98
Truworths Int Ltd	TRU	9739	10036	-2.96	9.29	30.99
Woolworths Holdings Ltd	WHL	6466	6559	-1.42	9.59	-10.44
Zeda Limited	ZZD	1313	1309	0.31	4.12	2.98

LOCAL EQUITIES | JSE SMALL CAP COMPANIES (Cents Per Share)

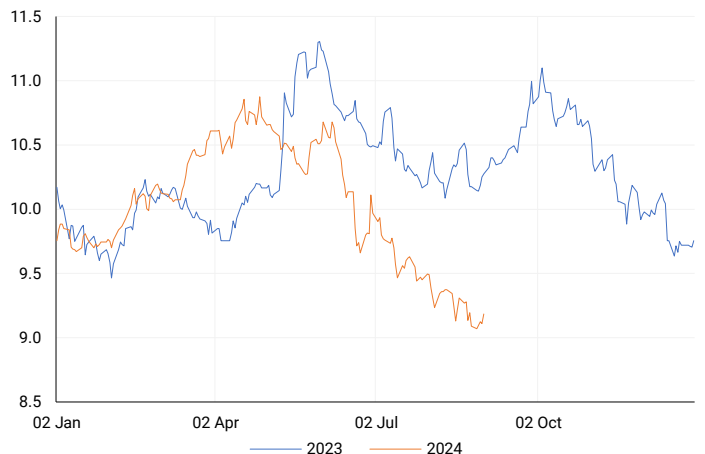
COMPANY	CODE	CLOSE	PREVIOUS	1D%	1M%	YTD%
ArcelorMittal SA Limited	ACL	122	122	0.00	-10.95	-25.61
ADVTECH Ltd	ADH	3240	3310	-2.11	8.40	32.03
Altron Limited A	AEL	1700	1725	-1.45	1.19	65.85
AECI Limited	AFE	10600	10650	-0.47	2.91	-3.36
Alexander Forbes Grp Hldgs	AFH	657	660	-0.45	1.08	-0.45
Afrimat Limited	AFT	6604	6612	-0.12	-4.81	4.83
African Rainbow Cap Inv	AIL	618	602	2.66	-4.92	26.38
Adcock Ingram Hldgs Ltd	AIP	6450	6367	1.30	11.00	7.32
Astral Foods Ltd	ARL	17450	17450	0.00	2.65	19.06
Attacq Limited	ATT	1152	1150	0.17	5.21	24.95
Brait PLC	BAT	115	112	2.68	33.72	-36.81
Blue Label Telecoms Ltd	BLU	493	525	-6.10	16.00	27.06
Burststone Group	BTN	826	846	-2.36	6.31	3.25
Coronation Fund Mngrs Ld	CML	4060	4060	0.00	8.44	30.30
Curro Holdings Limited	COH	1322	1341	-1.42	9.71	13.48
Cashbuild Ltd	CSB	16700	16652	0.29	1.64	0.04
DRD Gold Ltd	DRD	1501	1512	-0.73	-17.57	-4.82
Datatec Ltd	DTC	3555	3602	-1.30	-0.36	-12.22
Emira Property Fund Ltd	EMI	1084	1098	-1.28	1.21	26.78
Equites Prop Fund Ltd	EQU	1360	1360	0.00	5.43	-2.51
Famous Brands Ltd	FBR	5861	5865	-0.07	9.55	1.17
Fairvest Limited B	FTB	440	442	-0.45	12.82	27.91
Grindrod Ltd	GND	1417	1405	0.85	-9.92	23.65
Hosken Cons Inv Ltd	HCI	18591	18800	-1.11	-1.82	-8.24
Hudaco Industries Ltd	HDC	18966	19057	-0.48	7.45	18.07
Hyprop Inv Ltd	HYP	3823	3761	1.65	20.11	22.89
JSE Ltd	JSE	11700	12036	-2.79	11.87	26.57
KAP Industrial Hldgs Ltd	KAP	332	338	-1.78	10.30	26.72
Karooooo Ltd	KRO	69200	65903	5.00	11.16	45.69
PSG Konsult Limited	KST	1737	1732	0.29	4.64	13.16
Libstar Holdings Ltd	LBR	420	434	-3.23	8.81	20.00
Lighthouse Properties plc	LTE	811	820	-1.10	-0.49	10.34
Industrials REIT Limited	MLI	1.6	1.6	0.00	14.29	128.57
MAS P.L.C	MSP	1751	1723	1.63	-3.79	1.16
Metair Investments Ltd	MTA	1535	1540	-0.32	11.88	-13.52
Motus Holdings Ltd	MTH	12080	12054	0.22	16.52	19.01
Murray & Roberts Hldgs	MUR	308	305	0.98	0.65	106.71
Oceana Group Ltd	OCE	6845	7035	-2.70	-0.80	-3.14
Omnia Holdings Ltd	OMN	6326	6324	0.03	-3.64	-3.23
Pan African Resource plc	PAN	724	717	0.98	6.16	77.02
PPC Limited	PPC	418	413	1.21	11.17	4.76
Raubex Group Ltd	RBX	4925	5010	-1.70	8.98	77.67
RFG Holdings Limited	RFG	1710	1799	-4.95	12.06	26.67
Reunert Ltd	RLO	7725	7767	-0.54	8.41	28.88
SA Corp Real Estate Ltd	SAC	274	276	-0.72	1.48	18.10
Super Group Ltd	SPG	2775	2741	1.24	-7.93	-6.72
Stor-Age Prop REIT Ltd	SSS	1455	1449	0.41	8.42	11.41
Southern Sun LTD	SSU	665	666	-0.15	9.56	26.67
Sun International Ltd	SUI	4190	4240	-1.18	11.14	2.20
Tharisa plc	THA	1974	1892	4.33	2.23	30.64
Tsogo Sun Gaming Ltd	TSG	1189	1183	0.51	6.16	-2.94
Vukile Property Fund Ltd	VKE	1772	1783	-0.62	6.43	25.50
Wilson Bayly Hlm-Ovc Ltd	WBO	20358	20100	1.28	13.88	56.53

10-YEAR BOND YIELD | SELECTED ITEMS (Basis Point Change)

REGION	YIELD	1D	1M	1Y
United States	3.90%	4	-7	--
United Kingdom	4.01%	0	13	-41
Germany	2.30%	3	6	-25
Japan	0.90%	2	-13	--
South African 10Y	9.20%	7	-21	-108

SOUTH AFRICAN 10-YEAR

2023 vs 2024 to date

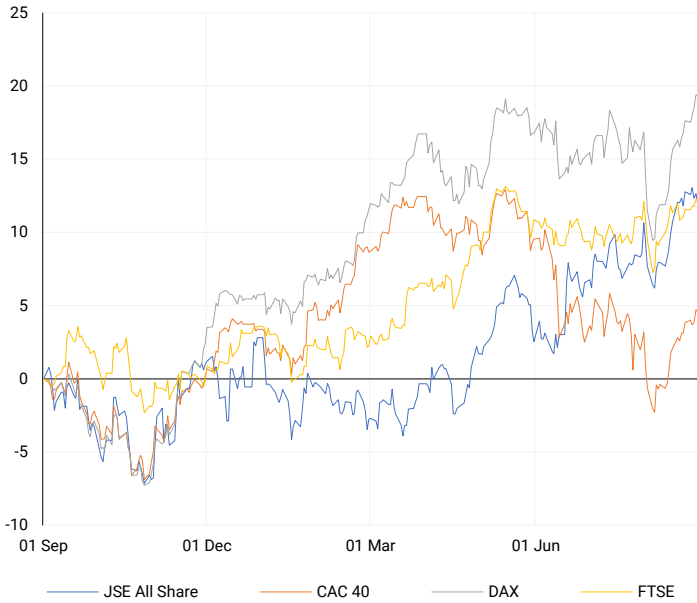


GLOBAL INTEREST RATES | SELECTED ITEMS

REGION	DATE CHANGED	CURRENT RATE
United States	26 Jul '23	5.25%-5.50%
United Kingdom	03 Aug '23	5.25%
European	27 Jul '23	4.25%
SA Repo Rate	25 May '23	8.25%
SA Prime Rate	25 May '23	11.75%

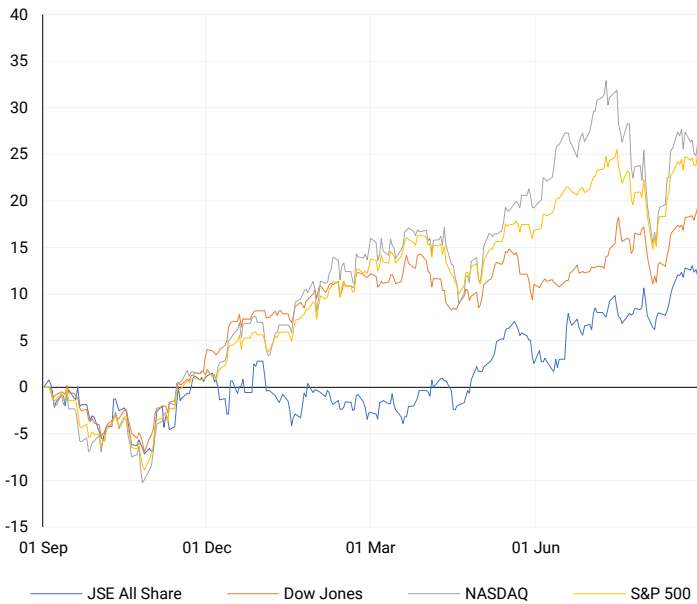
EUROPEAN INDICES

Normalised percentage performances



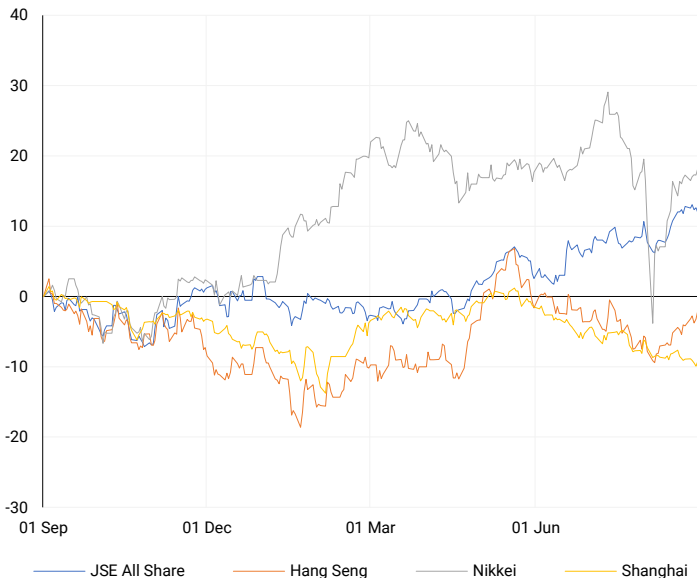
AMERICAN INDICES

Normalised percentage performances



ASIAN INDICES

Normalised percentage performances

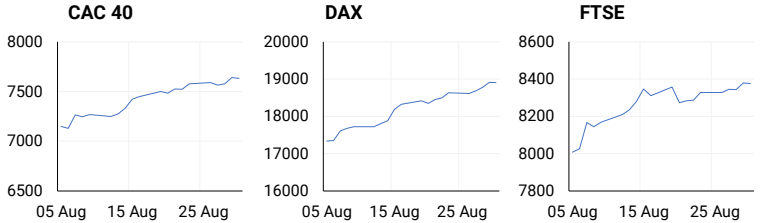


EUROPEAN MARKET SUMMARY

SELECTED ITEMS

European markets closed higher on Friday, the last trading day of August, as investors analysed global inflation data. In the Eurozone, inflation dropped to a three-year low of 2.2% in August, aligning with expectations and down from July's 2.6%. In France, the EU-harmonized consumer price index also fell to 2.2% in August, down from 2.7% in July. Similarly, Italy's preliminary data showed a decrease in inflation to 1.3%. This follows reports from Germany and Spain indicating that inflationary pressures are easing in those countries as well.

EUROPEAN INDICES	CLOSE	PREVIOUS	1D%	5D%	1M%	YTD%
CAC 40	7630.95	7640.95	-0.13	0.71	2.09	1.16
DAX 30	18906.92	18912.57	-0.03	1.47	2.69	12.87
Eurostoxx 50	4957.45	4960.60	-0.06	1.02	2.39	9.64
FTSE	8376.63	8379.64	-0.04	0.59	1.24	8.32



AMERICAN MARKET SUMMARY

SELECTED ITEMS

Wall Street stocks rose on Friday, with the Dow achieving its second consecutive all-time closing high. Tesla and Amazon saw gains as fresh U.S. economic data boosted expectations that the Federal Reserve might modestly cut interest rates in September. U.S. consumer spending increased solidly in July, indicating a strong economy, while prices rose moderately. This follows Fed Chair Jerome Powell's recent support for an imminent policy adjustment. Investors are now looking ahead to the Labor Department's August jobs report due this week, following a volatile month marked by early fears of a potential U.S. recession.

AMERICAN INDICES	CLOSE	PREVIOUS	1D%	5D%	1M%	YTD%
Dow Jones	41563.08	41335.05	0.55	0.94	2.01	10.28
Nasdaq	17713.63	17516.43	1.13	-0.92	3.30	18.00
S&P 500	5648.40	5591.96	1.01	0.24	3.90	18.42
US VIX	15.00	15.65	-4.15	-5.42	-15.21	20.48

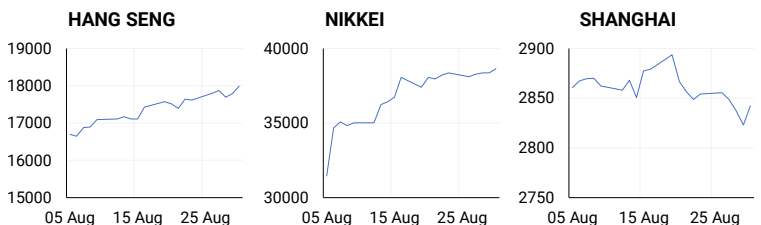


ASIAN MARKET SUMMARY

SELECTED ITEMS

Asia-Pacific markets showed mixed performance this morning as investors reacted to China's business activity data released over the weekend and awaited further economic reports due later this week. China's official manufacturing PMI for August dropped to a six-month low of 49.1, indicating a faster contraction compared to July's 49.4 and missing economists' expectations. However, the non-manufacturing PMI slightly improved to 50.3. Meanwhile, the Caixin manufacturing PMI showed an unexpected improvement, rising to 50.4, indicating expansion.

ASIAN INDICES	CLOSE	PREVIOUS	1D%	5D%	1M%	YTD%
Hang Seng	17989.07	17786.32	1.14	2.14	5.80	5.52
Nikkei 225	38647.75	38362.53	0.74	0.74	0.32	15.49
Shanghai	2842.21	2823.11	0.68	-0.43	-1.29	-4.46



COMMODITIES MARKET SUMMARY

SELECTED ITEMS

Gold prices remained steady this morning as investors awaited key U.S. jobs data, which could influence expectations regarding the Federal Reserve's potential interest rate cut later this month. Meanwhile, oil prices continued to decline as investors considered the impact of increased OPEC+ production starting in October, weighed against a significant drop in output from Libya and weak demand from China and the U.S., the two largest oil consumers globally.

COMMODITY	LAST	CLOSE	% CHG	1D%	5D%	YTD%
Brent Crude	76.30	78.82	-3.20	-1.62	-0.32	2.26
Gold	2498.32	2503.37	-0.20	-0.71	-0.36	21.35
Palladium	969.56	968.01	0.16	-1.17	0.87	-11.78
Platinum	929.08	929.33	-0.03	-1.40	-3.83	-5.87
Silver	28.46	28.86	-1.39	-1.94	-3.28	21.32

BRENT CRUDE

One-year



PLATINUM

One-year



GOLD

One-year



CURRENCY PAIR	LAST	CLOSE	% CHG	1D%	5D%	YTD%
USDZAR	17.87	17.83	0.24	0.47	0.54	-2.71
GBPZAR	23.46	23.40	0.24	0.07	-0.03	0.45
EURZAR	19.74	19.69	0.25	0.12	-0.69	-2.46
AUDZAR	12.09	12.06	0.19	-0.08	0.30	-3.17
EURUSD	1.10	1.10	-0.01	-0.27	-1.30	0.09
USDJPY	145.92	146.18	-0.18	0.82	1.27	3.65
GBPUSD	1.31	1.31	-0.01	-0.32	-0.67	3.10
USDCHF	0.85	0.85	-0.01	0.31	0.24	1.00

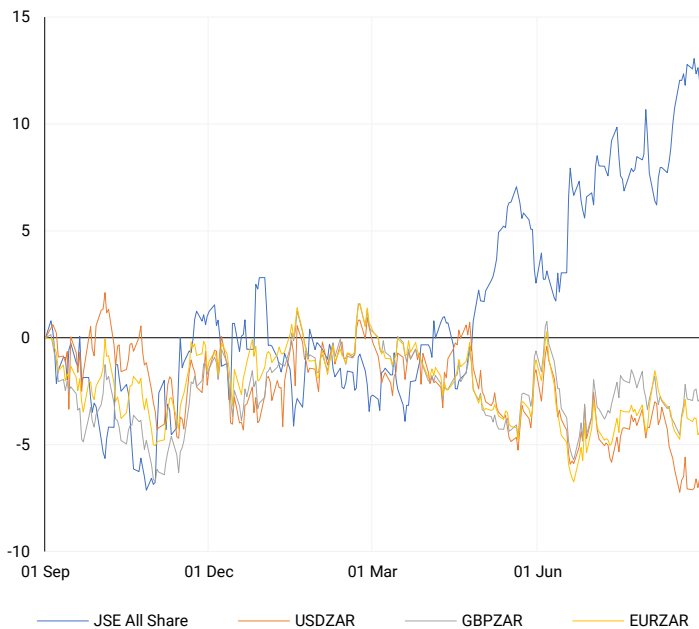
CURRENCY MARKET SUMMARY

SELECTED ITEMS

South Africa's rand remained stable on Friday after earlier reaching a 13-month high, supported by improved investor sentiment as signs emerged of the domestic economy gaining momentum. Meanwhile, the U.S. dollar strengthened, reaching a two-week high against the euro this morning, as traders reduced their expectations for aggressive policy easing by the Federal Reserve. The focus has now shifted to a crucial U.S. jobs report due at the end of this week.

CURRENCY PAIRS vs JSE ALL SHARE

Normalised percentage performances



USDZAR

One-year



EURUSD

One-year



SOURCES | JSE, IRESS, MONEYWEB, CNBC, BBC, CNN

Disclaimer: This note is prepared for Sanlam Private Wealth (Pty) Ltd, by K2013143132 (Pty) Ltd trading as ThompsonGreen. ThompsonGreen is an independent company contracted to Sanlam Private Wealth (Pty) Ltd. The views expressed in this note are those of ThompsonGreen and/or its analysts and not necessarily the views of Sanlam Private Wealth (Pty) Ltd, Sanlam or any officer or agent thereof. K2013143132 (Pty) Ltd trading as ThompsonGreen is a research house and not a registered broker, financial adviser or financial service provider. Our editors and customer services teams also do not give personal investment advice. The information in this document is general advice only and may not be appropriate to your particular investment objectives, financial situation or particular needs. Before investing, or if you are in any doubt about your personal situation, you should seek professional advice from a stockbroker or independent financial adviser authorised by the Financial Sector Conduct Authority.