

GLOBAL OVERVIEW | SELECTED INDICES

| SOUTH AFRICAN INDICES | | | | | | |
|-----------------------|-----------|-----------|-------|-------|-------|-------|
| | CLOSE | PREVIOUS | 1D% | 5D% | 1M% | YTD% |
| All Share | 83483.36 | 83749.86 | -0.32 | -0.84 | 3.66 | 8.57 |
| Top 40 | 76041.39 | 76290.35 | -0.33 | -0.88 | 3.53 | 7.87 |
| Financial 15 | 20838.33 | 20933.00 | -0.45 | 0.20 | 7.30 | 16.59 |
| Industrial 25 | 113915.15 | 114315.37 | -0.35 | 0.22 | 5.84 | 9.83 |
| Resource 10 | 56015.89 | 56092.36 | -0.14 | -4.40 | -5.41 | -2.64 |
| Mid Cap | 87481.69 | 87739.81 | -0.29 | -1.41 | 2.57 | 8.79 |
| Small Cap | 85559.23 | 85630.96 | -0.08 | 0.43 | 6.35 | 18.02 |
| Banks | 13212.49 | 13230.22 | -0.13 | 0.17 | 7.34 | 20.68 |
| Retailers | 7407.20 | 7394.29 | 0.17 | -0.57 | 10.66 | 18.83 |
| Property (J253) - TR | 2289.67 | 2307.38 | -0.77 | 0.39 | 7.60 | 22.86 |

| AMERICAN INDICES | | | | | | |
|------------------|----------|----------|------|-------|--------|-------|
| | CLOSE | PREVIOUS | 1D% | 5D% | 1M% | YTD% |
| Dow Jones | 41563.08 | 41563.08 | 0.00 | 0.78 | 4.59 | 10.28 |
| Nasdaq | 17713.63 | 17713.63 | 0.00 | -0.07 | 5.59 | 18.00 |
| S&P 500 | 5648.40 | 5648.40 | 0.00 | 0.56 | 5.65 | 18.42 |
| US VIX | 15.55 | 15.00 | 3.67 | -3.72 | -33.52 | 24.90 |

| EUROPEAN INDICES | | | | | | |
|------------------|----------|----------|-------|------|------|-------|
| | CLOSE | PREVIOUS | 1D% | 5D% | 1M% | YTD% |
| CAC 40 | 7646.42 | 7630.95 | 0.20 | 0.74 | 5.44 | 1.37 |
| DAX 30 | 18930.85 | 18906.92 | 0.13 | 1.69 | 7.19 | 13.01 |
| Eurostoxx 50 | 4971.60 | 4957.45 | 0.29 | 1.52 | 7.22 | 9.95 |
| FTSE | 8363.84 | 8376.63 | -0.15 | 0.43 | 2.31 | 8.15 |

| ASIAN INDICES | | | | | | |
|---------------|----------|----------|-------|-------|-------|-------|
| | CLOSE | PREVIOUS | 1D% | 5D% | 1M% | YTD% |
| Hang Seng | 17691.97 | 17989.07 | -1.65 | -0.60 | 4.41 | 3.78 |
| Nikkei 225 | 38700.87 | 38647.75 | 0.14 | 1.55 | 7.77 | 15.65 |
| Shanghai | 2811.04 | 2842.21 | -1.10 | -1.56 | -3.25 | -5.51 |

| EARLY MORNING MARKETS | | | | | | |
|-----------------------|---------|---------|-------|-------|-------|--------|
| | LAST | CLOSE | % CHG | 1D% | 5D% | YTD% |
| TENCENT | 378.40 | 377.80 | 0.16 | -1.10 | -1.10 | 30.19 |
| BHP AUS | 4008.00 | 4033.00 | -0.62 | -1.08 | -1.25 | -20.00 |

NOTE : 5D% and 1M% are rolling percentage moves

INTERNATIONAL ECONOMIC CALENDAR | SELECTED EVENTS

| TIME | AREA | TODAY'S EVENTS & RELEASES | PERIOD | EXP. | PREV. |
|-------|------|---------------------------|--------|-------|--------|
| 11:30 | ZA | GDP Growth Rate q/q | Q2 | 0.40% | -0.10% |
| 16:00 | US | ISM Manufacturing PMI | Aug | 47.50 | 46.80 |
| --- | --- | --- | --- | --- | --- |
| --- | --- | --- | --- | --- | --- |
| --- | --- | --- | --- | --- | --- |

| TIME | AREA | PREVIOUS SESSION'S RELEASES | PERIOD | EXP. | ACT. |
|-------|------|-----------------------------|--------|--------|--------|
| 11:00 | ZA | ABSA Manufacturing PMI | Aug | 53.00 | 43.60 |
| 14:30 | ZA | Total New Vehicle Sales | Aug | 45.00K | 43.59K |
| --- | --- | --- | --- | --- | --- |
| --- | --- | --- | --- | --- | --- |
| --- | --- | --- | --- | --- | --- |

JSE ALL SHARE | BEST AND WORST ONE-DAY PERFORMERS

| BEST ONE-DAY % PERFORMERS | | | | | | |
|---------------------------|------|-------|------|-------|--------|--|
| | CODE | CLOSE | 1D% | 5D% | YTD% | |
| African Rainbow Cap Inv | AIL | 674 | 9.06 | 9.06 | 37.83 | |
| Impala Platinum Hlgs Ltd | IMP | 8300 | 7.79 | -6.00 | -9.06 | |
| Burstone Group Limited | BTN | 871 | 5.45 | 7.66 | 8.88 | |
| Anglo American Plat Ltd | AMS | 64102 | 4.13 | -6.49 | -33.50 | |
| Motus Holdings Ltd | MTH | 12417 | 2.79 | 7.56 | 22.33 | |
| Sun International Ltd | SUI | 4301 | 2.65 | 4.83 | 4.90 | |

| WORST ONE-DAY % PERFORMERS | | | | | | |
|----------------------------|------|-------|--------|--------|--------|--|
| | CODE | CLOSE | 1D% | 5D% | YTD% | |
| Brait PLC | BAT | 102 | -11.30 | -10.53 | -43.96 | |
| Karoo000 Ltd | KRO | 66101 | -4.48 | 1.30 | 39.16 | |
| Harmony GM Co Ltd | HAR | 17093 | -4.12 | -7.70 | 42.93 | |
| Tharisa plc | THA | 1900 | -3.75 | -3.75 | 25.74 | |
| Sanlam Limited | SLM | 8581 | -3.46 | 0.22 | 17.87 | |

DIVIDEND DATA

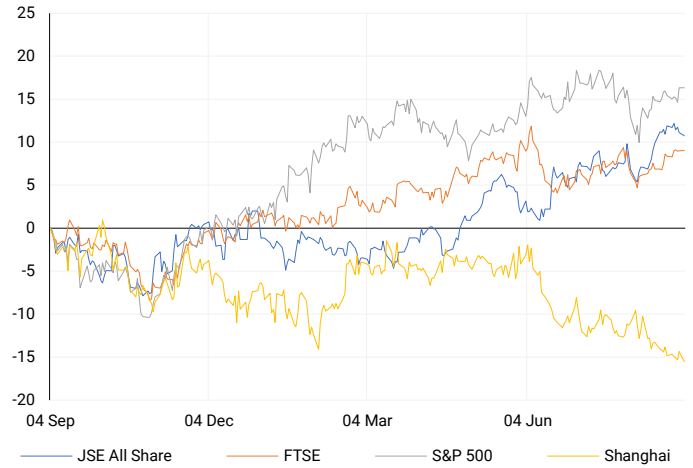
| COMPANY | CODE | EXPECTED DIVIDEND | COMPANY | CODE | EXPECTED DIVIDEND |
|------------------------------|------|-------------------|---------------------------|------|-------------------|
| Nedbank Group | NED | 971 ZARc | Lighthouse Properties plc | LTE | 1.22 EURc |
| Merafe Resources | MRF | 20 ZARc | Capital & Regional plc | CRP | 2.85 GBPp |
| Resilient REIT | RES | 218.97 ZARc | --- | --- | --- |
| Homechoice International plc | HIL | 95 ZARc | --- | --- | --- |
| Standard Bank Group | SBPP | 451.1 ZARc | --- | --- | --- |

SOURCES | JSE, IRESS, MONEYWEB, CNBC, BBC, CNN

PLEASE SEE THE BOTTOM OF THE LAST PAGE FOR THE FULL DISCLAIMER

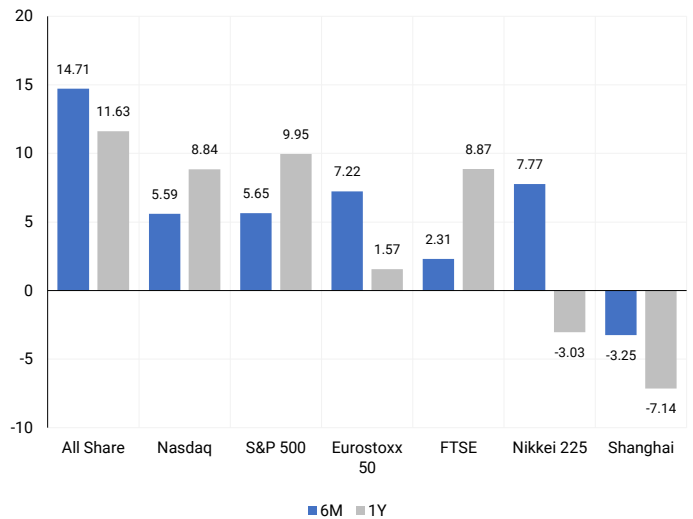
INTERNATIONAL INDICES

Normalised percentage performances - In rand terms



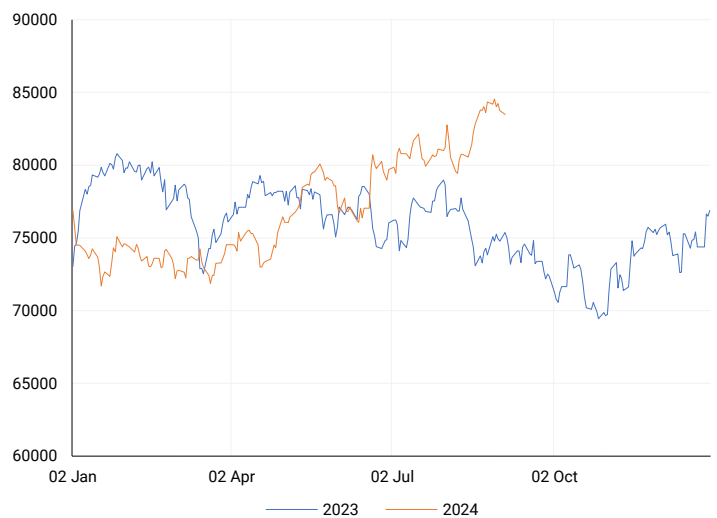
INTERNATIONAL INDICES

6-month & 1-year percentage performances



JSE ALL SHARE INDEX

2023 v 2024 to date



Last date to trade Tue, 03 September

LOCAL EQUITIES | JSE LARGE CAP COMPANIES (Cents Per Share)

| COMPANY | CLOSE | PREVIOUS | 1D% | 5D% | 1M% | YTD% |
|----------------------------|--------|----------|-------|--------|--------|--------|
| Absa Group Limited | 17561 | 17586 | -0.14 | 1.08 | 13.91 | 7.27 |
| Anglo American plc | 52358 | 51565 | 1.54 | -2.22 | 0.33 | 10.58 |
| Anglo American Plat Ltd | 64102 | 61558 | 4.13 | -6.49 | -2.16 | -33.50 |
| Anglogold Ashanti Ltd | 52546 | 52891 | -0.65 | -5.23 | 4.51 | 48.68 |
| Anheuser-Busch InBev SA NV | 109188 | 108472 | 0.66 | 0.24 | -5.29 | -9.02 |
| BHP Group Limited | 48324 | 48690 | -0.75 | -1.72 | -1.03 | -23.71 |
| BID Corporation Ltd | 44541 | 44914 | -0.83 | 7.00 | 1.83 | 4.40 |
| British American Tob plc | 66750 | 66010 | 1.12 | 3.15 | 2.34 | 23.27 |
| Compagnie Fin Richemont | 278448 | 279763 | -0.47 | -2.73 | 3.13 | 8.45 |
| Capitec Bank Hldgs Ltd | 294278 | 292594 | 0.58 | 0.61 | 4.54 | 45.22 |
| Discovery Ltd | 15245 | 15300 | -0.36 | 0.61 | 9.68 | 6.10 |
| Firststrand Ltd | 8550 | 8598 | -0.56 | -0.02 | 6.92 | 16.31 |
| Gold Fields Ltd | 24623 | 24794 | -0.69 | -2.20 | -18.78 | -11.36 |
| Glencore plc | 9388 | 9335 | 0.57 | -2.22 | -0.32 | -15.92 |
| Impala Platinum Hlgs Ltd | 8300 | 7700 | 7.79 | -6.00 | -5.79 | -9.06 |
| Kumba Iron Ore Ltd | 34074 | 35290 | -3.45 | -6.03 | -10.77 | -44.58 |
| Mondi plc | 34762 | 34485 | 0.80 | 2.24 | 2.49 | -4.24 |
| MTN Group Ltd | 8765 | 8886 | -1.36 | -9.02 | 16.65 | -24.11 |
| Naspers Ltd -N- | 364326 | 367775 | -0.94 | 0.55 | 6.70 | 16.47 |
| Prosus N.V. | 66090 | 66148 | -0.09 | 1.35 | 6.17 | 17.94 |
| South32 Limited | 3737 | 3730 | 0.19 | -0.43 | 4.97 | -11.42 |
| Standard Bank Group Ltd | 23903 | 24000 | -0.40 | -0.64 | 9.41 | 14.86 |
| Shoprite Holdings Ltd | 31337 | 31008 | 1.06 | 1.93 | 6.24 | 13.93 |
| Sanlam Limited | 8581 | 8889 | -3.46 | 0.22 | 9.40 | 17.87 |
| Sasol Limited | 13416 | 13758 | -2.49 | -9.31 | 0.13 | -27.59 |
| Sibanye Stillwater Ltd | 1722 | 1723 | -0.06 | -10.59 | -11.51 | -30.84 |
| Vodacom Group Ltd | 11042 | 11004 | 0.35 | -3.84 | 12.39 | 4.17 |

SOUTH AFRICAN MARKET SUMMARY

SELECTED ITEMS

On the Johannesburg Stock Exchange, the blue-chip Top-40 index closed 0.33% lower on Monday. Investors are focusing on South Africa's second-quarter GDP figures, due today, for insights into the health of Africa's largest economy. Earlier, a Purchasing Managers' Index survey showed a slump in South African manufacturing activity in August, indicating volatile business conditions. RCL Foods reported strong financial results for the year ending 30 June 2024, resuming dividend payments after unbundling its Rainbow business. Similarly, JSE-listed Bidvest posted robust results, with five of its seven divisions reporting profit growth, including four with double-digit increases.

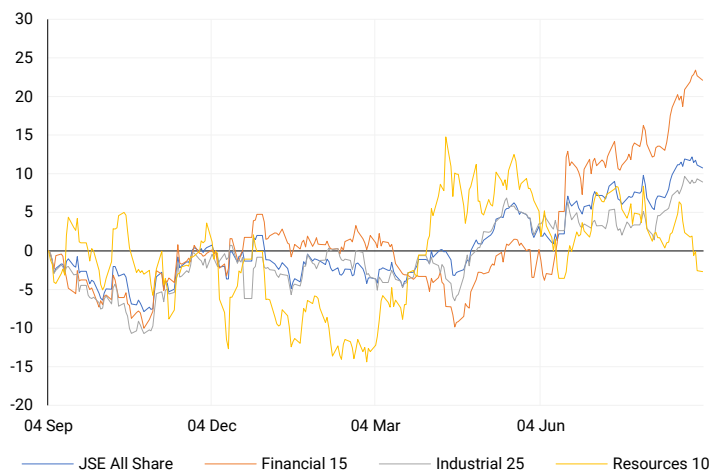
JSE ALL SHARE

One-year



LOCAL INDICES

Normalised percentage performances



EXPECTED COMPANY REPORTING SCHEDULE

| COMPANY | CODE | RELEASE | DATE |
|----------------|------|---------|-----------|
| Aspen | APN | Final | 3 Sep '24 |
| Cashbuild | CSB | Final | 4 Sep '24 |
| Woolworths | WHL | Final | 4 Sep '24 |
| Shoprite | SHP | Final | 5 Sep '24 |
| Bell Equipment | BEL | Interim | 9 Sep '24 |

BANK AND OTHER SELECTE PREFERENCE SHARES

| COMPANY | CODE | CLOSE | CLEAN YIELD | NEXT LDT (Est.) |
|------------------|------|-------|-------------|-----------------|
| Investec Limited | INPR | 8800 | 11.24 | Thu, 06 Jun '24 |
| Standard Bank | SBPP | 9010 | 11.15 | Thu, 05 Sep '24 |
| Absa | ABSP | 81800 | 11.48 | Thu, 12 Sep '24 |
| Capitec | CPIP | 9672 | 9.69 | Thu, 19 Sep '24 |
| Steinhoff | SHFF | 9734 | 10.47 | Thu, 17 Oct '24 |
| Grindrod | GNDP | 9048 | 12.22 | Thu, 19 Sep '24 |
| Netcare | NTCP | 8200 | 11.82 | Thu, 31 Oct '24 |
| Discovery | DSBP | 9653 | 11.91 | Thu, 19 Sep '24 |
| Invicta | IVTP | --- | 13.41 | Thu, 27 Jun '24 |

LOCAL SENS ANNOUNCEMENTS

SELECTED RELEASE

THE BIDVEST GROUP LIMITED – Audited Financial Results

The company reported strong financial results with a revenue of R122.6 billion, up by 6.7%, and a trading profit of R12.4 billion, up by 8.5%. Operations generated R14.0 billion in cash, a 15.3% increase. The return on funds employed (ROFE) was 37.3%. Basic earnings per share (EPS) were 1 873.8 cents, and headline earnings per share (HEPS) were 1,912.6 cents, both increasing by 6.6%. Normalized HEPS was 1 964.8 cents, up by 4.3%, and the total dividend declared was 914 cents, also up by 4.3%.

BVT | -2.03% OPEN | 29412c HIGH | 30421c LOW | 28438c CLOSE | 28528c TIME | 07:15

HARMONY GOLD MINING COMPANY LIMITED – Further Trading Statement

Harmony's basic earnings per share (EPS) for FY24 are expected to rise significantly by 77.6% to 77.9%, reaching between 1 385.0 and 1 388.0 cents, up from 780 cents in FY23. Additionally, headline earnings per share (HEPS) are forecasted to increase by 131.5% to 131.6%, from 800 cents in FY23 to between 1 852.0 and 1 852.4 cents in FY24.

HAR | -4.12% OPEN | 17320c HIGH | 17450c LOW | 16843c CLOSE | 17093c TIME | 16:40

SUN INTERNATIONAL LIMITED – Trading Statement

According to section 3.4(b) of the JSE Limited Listings Requirements, shareholders are informed that the Company's basic earnings per share (EPS) and headline earnings per share (HEPS) for the six months ending 30 June 2024 are expected to increase. Basic EPS is anticipated to rise by 88.9% to 102.3%, reaching between 323 and 346 cents, up from 171 cents in June 2023. HEPS is expected to increase by 5.4% to 12.4%, ranging from 182 to 194 cents, compared to 173 cents in June 2023. Adjusted HEPS is also forecasted to grow by 4.5% to 11.6%, reaching between 206 and 220 cents, up from 197 cents in June 2023.

SUI | 2.65% OPEN | 4199c HIGH | 4377c LOW | 4138c CLOSE | 4301c TIME | 10:00

SIBANYE STILLWATER LIMITED – Trading Statement

Sibanye-Stillwater expects to report a significant loss per share for H1 2024, ranging between 250.8 and 277.2 SA cents (13.4 to 14.8 US cents), compared to earnings per share of 262 SA cents (14 US cents) in H1 2023. This represents a year-on-year decline of over 100%, primarily due to a R7,499 million (US\$401 million) impairment of property, plant, and equipment from the US PGM operations, driven by lower forecasted palladium prices. However, headline earnings per share (HEPS), which excludes the impairment, are expected to remain positive but drastically lower, between 4.6 and 5.0 SA cents (0.2 to 0.3 US cents), reflecting a 97% to 98% decline from the 208 SA cents (11 US cents) reported in H1 2023.

SSW | -0.06% OPEN | 1655c HIGH | 1722c LOW | 1571c CLOSE | 1722c TIME | 08:00

LOCAL EQUITIES | JSE MID CAP COMPANIES (Cents Per Share)

| COMPANY | CODE | CLOSE | PREVIOUS | 1D% | 1M% | YTD% |
|----------------------------|------|-------|----------|-------|--------|--------|
| Aspen Pharmacare Hldgs Ltd | APN | 23742 | 23999 | -1.07 | -2.26 | 16.67 |
| African Rainbow Min Ltd | ARI | 17232 | 17400 | -0.97 | -16.94 | -13.84 |
| AVI Ltd | AVI | 10103 | 10174 | -0.70 | 4.07 | 23.10 |
| Barloworld Ltd | BAW | 9366 | 9395 | -0.31 | 2.93 | 18.56 |
| Bidvest Ltd | BVT | 28528 | 29120 | -2.03 | 6.61 | 13.08 |
| Bytes Technology Grp PLC | BYI | 10995 | 11211 | -1.93 | -1.83 | -23.22 |
| Capital&Counties Prop plc | CCO | 3459 | 3405 | 1.59 | 0.99 | 6.43 |
| Clicks Group Ltd | CLS | 37244 | 37369 | -0.33 | 5.73 | 14.35 |
| Dis-Chem Pharmacies Ltd | DCP | 3570 | 3500 | 2.00 | 0.31 | 16.32 |
| Exxaro Resources Ltd | EXX | 15780 | 16000 | -1.37 | -15.90 | -22.83 |
| Fortress Real Est INV B | FFB | 1905 | 1930 | -1.30 | 12.92 | 32.66 |
| Growthpoint Prop Ltd | GRT | 1388 | 1410 | -1.56 | 10.95 | 18.84 |
| Harmony GM Co Ltd | HAR | 17093 | 17827 | -4.12 | 0.06 | 42.93 |
| Hammerson plc | HMN | 666 | 669 | -0.45 | -1.33 | -2.06 |
| Investec Ltd | INL | 13571 | 13562 | 0.07 | -0.62 | 8.06 |
| Investec plc | INP | 13634 | 13549 | 0.63 | -0.47 | 8.25 |
| Italtile Ltd | ITE | 1247 | 1259 | -0.95 | 3.92 | 11.34 |
| Life Healthc Grp Hldgs Ltd | LHC | 1429 | 1437 | -0.56 | 7.85 | -22.21 |
| MultiChoice Group Ltd | MCG | 11053 | 11024 | 0.26 | 1.62 | 36.42 |
| Montauk Renewables Inc | MKR | 8500 | 8631 | -1.52 | -23.08 | -50.58 |
| Mr Price Group Ltd | MRP | 24359 | 24240 | 0.49 | 13.31 | 55.34 |
| Momentum Met Hldgs Ltd | MTM | 2759 | 2791 | -1.15 | 4.00 | 26.04 |
| Ninety One Plc | N91 | 3892 | 3913 | -0.54 | 1.17 | -9.74 |
| Nedbank Group Ltd | NED | 29737 | 29669 | 0.23 | 8.13 | 37.52 |
| Northam Platinum Hldgs Ltd | NPH | 10600 | 10543 | 0.54 | -21.94 | -24.52 |
| NEPI Rockcastle N.V. | NRP | 14350 | 14423 | -0.51 | 5.27 | 13.55 |
| Netcare Limited | NTC | 1360 | 1358 | 0.15 | 4.53 | -4.49 |
| Ninety One Limited | NY1 | 3877 | 3893 | -0.41 | 2.11 | -9.77 |
| Old Mutual Limited | OMU | 1271 | 1290 | -1.47 | 6.63 | -2.68 |
| OUTsurance Group Ltd | OUT | 4768 | 4773 | -0.10 | 1.45 | 12.99 |
| Pick n Pay Stores Ltd | PIK | 2430 | 2430 | 0.00 | 7.57 | 4.43 |
| Pepkor Holdings Ltd | PPH | 2185 | 2190 | -0.23 | 8.06 | 11.31 |
| Quilter Plc | QLT | 3240 | 3239 | 0.03 | 5.88 | 33.44 |
| Redefine Properties Ltd | RDF | 471 | 476 | -1.05 | 10.56 | 22.34 |
| Remgro Ltd | REM | 14611 | 14451 | 1.11 | 9.77 | -10.08 |
| Resilient REIT Limited | RES | 5683 | 5717 | -0.59 | 14.16 | 28.31 |
| Reinet Investments S.C.A | RNI | 47802 | 47827 | -0.05 | -0.44 | 2.53 |
| Sappi Ltd | SAP | 4515 | 4542 | -0.59 | -8.01 | 2.15 |
| Santam Limited | SNT | 35100 | 35155 | -0.16 | 11.11 | 22.48 |
| The Spar Group Ltd | SPP | 12766 | 12813 | -0.37 | 3.74 | 8.28 |
| Sirius Real Estate Ltd | SRE | 2260 | 2265 | -0.22 | 2.45 | 2.03 |
| Tiger Brands Ltd | TBS | 23333 | 23560 | -0.96 | 5.60 | 15.92 |
| Transaction Capital Ltd | TCP | 271 | 274 | -1.09 | -3.21 | -66.04 |
| The Foschini Group Limited | TFG | 14575 | 14489 | 0.59 | 9.27 | 31.35 |
| Thungela Resources Ltd | TGA | 11400 | 11620 | -1.89 | -6.64 | -25.88 |
| Telkom SA SOC Ltd | TKG | 2795 | 2826 | -1.10 | 20.58 | -6.02 |
| Truworths Int Ltd | TRU | 9712 | 9739 | -0.28 | 7.91 | 30.63 |
| Woolworths Holdings Ltd | WHL | 6445 | 6466 | -0.32 | 11.35 | -10.73 |
| Zeda Limited | ZZD | 1306 | 1313 | -0.53 | 6.18 | 2.43 |

LOCAL EQUITIES | JSE SMALL CAP COMPANIES (Cents Per Share)

| COMPANY | CODE | CLOSE | PREVIOUS | 1D% | 1M% | YTD% |
|----------------------------|------|-------|----------|--------|--------|--------|
| ArcelorMittal SA Limited | ACL | 122 | 122 | 0.00 | -6.15 | -25.61 |
| ADVTECH Ltd | ADH | 3315 | 3240 | 2.31 | 13.45 | 35.09 |
| Altron Limited A | AEL | 1705 | 1700 | 0.29 | 0.29 | 66.34 |
| AECI Limited | AFE | 10715 | 10600 | 1.08 | 3.02 | -2.32 |
| Alexander Forbes Grp Hldgs | AFH | 660 | 657 | 0.46 | 0.46 | 0.00 |
| Afrimat Limited | AFT | 6568 | 6604 | -0.55 | -2.78 | 4.25 |
| African Rainbow Cap Inv | AIL | 674 | 618 | 9.06 | -1.89 | 37.83 |
| Adcock Ingram Hldgs Ltd | AIP | 6531 | 6450 | 1.26 | 12.60 | 8.67 |
| Astral Foods Ltd | ARL | 17275 | 17450 | -1.00 | 3.26 | 17.86 |
| Attacq Limited | ATT | 1138 | 1152 | -1.22 | 5.08 | 23.43 |
| Brait PLC | BAT | 102 | 115 | -11.30 | 13.33 | -43.96 |
| Blue Label Telecoms Ltd | BLU | 493 | 493 | 0.00 | 15.46 | 27.06 |
| Burstone Group | BTN | 871 | 826 | 5.45 | 11.38 | 8.88 |
| Coronation Fund Mngrs Ld | CML | 4009 | 4060 | -1.26 | 7.65 | 28.66 |
| Curro Holdings Limited | COH | 1325 | 1322 | 0.23 | 11.34 | 13.73 |
| Cashbuild Ltd | CSB | 16652 | 16700 | -0.29 | 0.92 | -0.25 |
| DRD Gold Ltd | DRD | 1495 | 1501 | -0.40 | -16.06 | -5.20 |
| Datatec Ltd | DTC | 3590 | 3555 | 0.98 | 2.60 | -11.36 |
| Emira Property Fund Ltd | EMI | 1059 | 1084 | -2.31 | -3.73 | 23.86 |
| Equites Prop Fund Ltd | EQU | 1331 | 1360 | -2.13 | 0.45 | -4.59 |
| Famous Brands Ltd | FBR | 5818 | 5861 | -0.73 | 8.77 | 0.43 |
| Fairvest Limited B | FTB | 441 | 440 | 0.23 | 6.52 | 28.20 |
| Grindrod Ltd | GND | 1432 | 1417 | 1.06 | -6.89 | 24.96 |
| Hosken Cons Inv Ltd | HCI | 18647 | 18591 | 0.30 | 2.77 | -7.96 |
| Hudaco Industries Ltd | HDC | 18396 | 18966 | -3.01 | 1.64 | 14.52 |
| Hyprop Inv Ltd | HYP | 3791 | 3823 | -0.84 | 18.25 | 21.86 |
| JSE Ltd | JSE | 11500 | 11700 | -1.71 | 8.13 | 24.41 |
| KAP Industrial Hldgs Ltd | KAP | 332 | 332 | 0.00 | 8.50 | 26.72 |
| Karooooo Ltd | KRO | 66101 | 69200 | -4.48 | -1.93 | 39.16 |
| PSG Konsult Limited | KST | 1745 | 1737 | 0.46 | 6.60 | 13.68 |
| Libstar Holdings Ltd | LBR | 403 | 420 | -4.05 | 0.50 | 15.14 |
| Lighthouse Properties plc | LTE | 811 | 811 | 0.00 | -0.86 | 10.34 |
| Industrials REIT Limited | MLI | 1.55 | 1.6 | -3.13 | -3.13 | 121.43 |
| MAS P.L.C | MSP | 1715 | 1751 | -2.06 | -8.04 | -0.92 |
| Metair Investments Ltd | MTA | 1532 | 1535 | -0.20 | 11.58 | -13.69 |
| Motus Holdings Ltd | MTH | 12417 | 12080 | 2.79 | 20.82 | 22.33 |
| Murray & Roberts Hldgs | MUR | 294 | 308 | -4.55 | -3.92 | 97.32 |
| Oceana Group Ltd | OCE | 6822 | 6845 | -0.34 | -2.54 | -3.47 |
| Omnia Holdings Ltd | OMN | 6355 | 6326 | 0.46 | -2.08 | -2.78 |
| Pan African Resource plc | PAN | 724 | 724 | 0.00 | 4.93 | 77.02 |
| PPC Limited | PPC | 413 | 418 | -1.20 | 9.26 | 3.51 |
| Raubex Group Ltd | RBX | 4960 | 4925 | 0.71 | 10.22 | 78.93 |
| RFG Holdings Limited | RFG | 1590 | 1710 | -7.02 | 2.91 | 17.78 |
| Reunert Ltd | RLO | 7760 | 7725 | 0.45 | 8.17 | 29.46 |
| SA Corp Real Estate Ltd | SAC | 274 | 274 | 0.00 | 1.86 | 18.10 |
| Super Group Ltd | SPG | 2780 | 2775 | 0.18 | -7.02 | -6.55 |
| Stor-Age Prop REIT Ltd | SSS | 1449 | 1455 | -0.41 | 8.30 | 10.95 |
| Southern Sun LTD | SSU | 665 | 665 | 0.00 | 9.38 | 26.67 |
| Sun International Ltd | SUI | 4301 | 4190 | 2.65 | 14.39 | 4.90 |
| Tharisa plc | THA | 1900 | 1974 | -3.75 | -5.00 | 25.74 |
| Tsogo Sun Gaming Ltd | TSG | 1196 | 1189 | 0.59 | 7.75 | -2.37 |
| Vukile Property Fund Ltd | VKE | 1772 | 1772 | 0.00 | 7.59 | 25.50 |
| Wilson Bayly Hlm-Ovc Ltd | WBO | 20273 | 20358 | -0.42 | 12.44 | 55.87 |

10-YEAR BOND YIELD | SELECTED ITEMS (Basis Point Change)

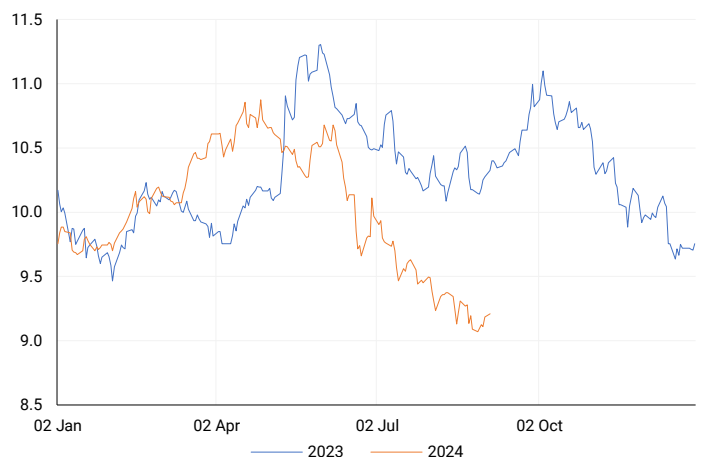
| REGION | YIELD | 1D | 1M | 1Y |
|-------------------|-------|----|-----|------|
| United States | 3.91% | 1 | 12 | -- |
| United Kingdom | 4.05% | 4 | 23 | -37 |
| Germany | 2.33% | 4 | 16 | -21 |
| Japan | 0.90% | 2 | -3 | -- |
| South African 10Y | 9.23% | 3 | -14 | -111 |

GLOBAL INTEREST RATES | SELECTED ITEMS

| REGION | DATE CHANGED | CURRENT RATE |
|----------------|-----------------|--------------|
| United States | Wed, 26 Jul '23 | 5.25%-5.50% |
| United Kingdom | Thu, 03 Aug '23 | 5.25% |
| European | Thu, 27 Jul '23 | 4.25% |
| SA Repo Rate | Thu, 25 May '23 | 8.25% |
| SA Prime Rate | Thu, 25 May '23 | 11.75% |

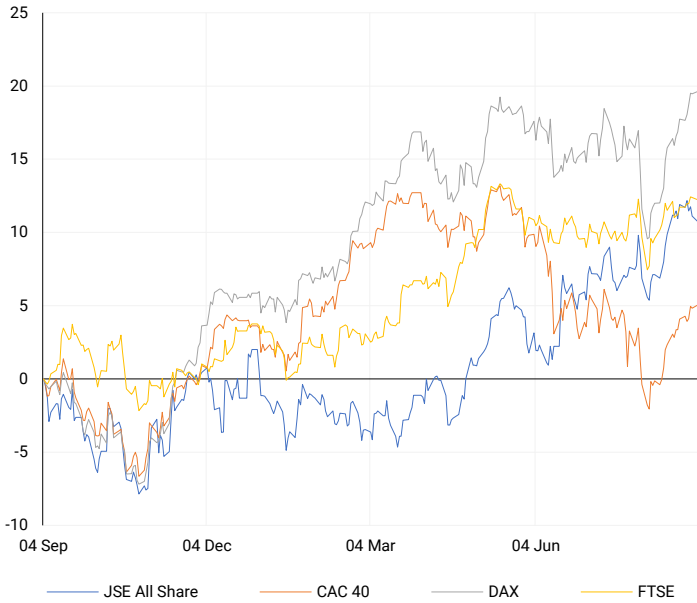
SOUTH AFRICAN 10-YEAR

2023 vs 2024 to date



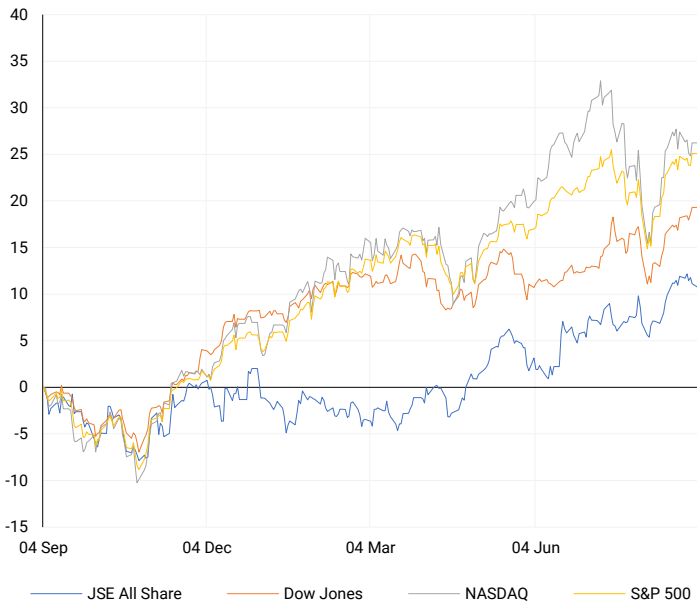
EUROPEAN INDICES

Normalised percentage performances



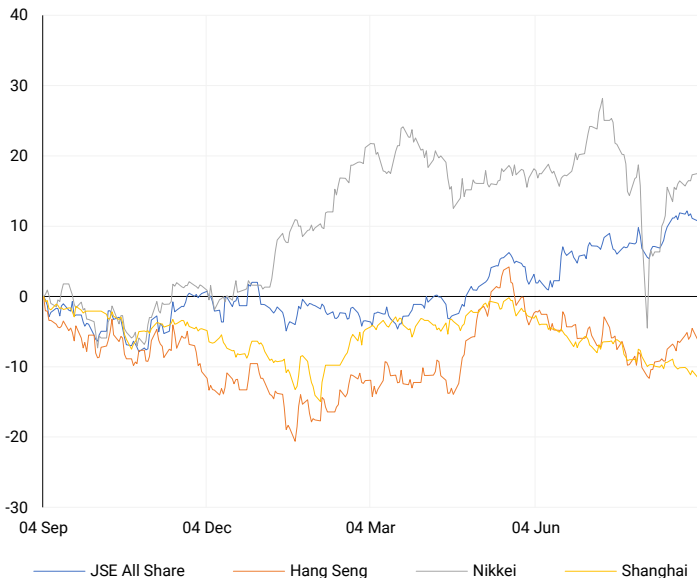
AMERICAN INDICES

Normalised percentage performances



ASIAN INDICES

Normalised percentage performances

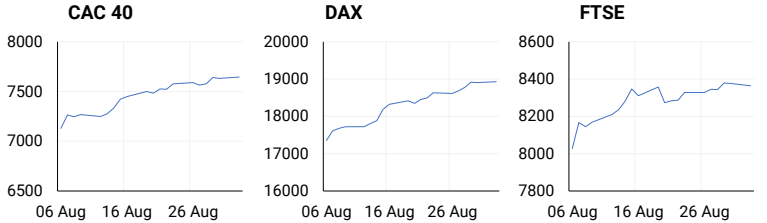


EUROPEAN MARKET SUMMARY

SELECTED ITEMS

European stocks remained flat on the first trading day of September as investors assessed the market outlook. Final readings of manufacturing PMIs across Europe were released Monday, showing that eurozone manufacturing activity stayed in contraction, with a reading of 45.8 in August, weighed down by weak performances in Germany and France, according to Hamburg Commercial Bank and S&P Global. Meanwhile, the U.K. manufacturing PMI rose to a 26-month high of 52.5 in August, indicating expansion, as reported by S&P Global.

| EUROPEAN INDICES | CLOSE | PREVIOUS | 1D% | 5D% | 1M% | YTD% |
|------------------|----------|----------|-------|------|------|-------|
| CAC 40 | 7646.42 | 7630.95 | 0.20 | 0.74 | 5.44 | 1.37 |
| DAX 30 | 18930.85 | 18906.92 | 0.13 | 1.69 | 7.19 | 13.01 |
| Eurostoxx 50 | 4971.60 | 4957.45 | 0.29 | 1.52 | 7.22 | 9.95 |
| FTSE | 8363.84 | 8376.63 | -0.15 | 0.43 | 2.31 | 8.15 |



AMERICAN MARKET SUMMARY

SELECTED ITEMS

US markets were closed on Monday due to a public holiday. This week, key U.S. economic reports to watch include the ISM manufacturing index for August today, July durable goods orders and the Fed's Beige Book on Wednesday, the ADP payrolls report for August on Thursday, and the U.S. jobs report for August on Friday.

| AMERICAN INDICES | CLOSE | PREVIOUS | 1D% | 5D% | 1M% | YTD% |
|------------------|----------|----------|------|-------|--------|-------|
| Dow Jones | 41563.08 | 41563.08 | 0.00 | 0.78 | 4.59 | 10.28 |
| Nasdaq | 17713.63 | 17713.63 | 0.00 | -0.07 | 5.59 | 18.00 |
| S&P 500 | 5648.40 | 5648.40 | 0.00 | 0.56 | 5.65 | 18.42 |
| US VIX | 15.55 | 15.00 | 3.67 | -3.72 | -33.52 | 24.90 |

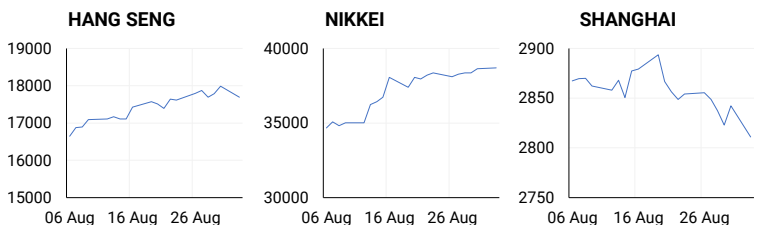


ASIAN MARKET SUMMARY

SELECTED ITEMS

Asia-Pacific markets mostly rose this morning as investors evaluated South Korea's August inflation data, which showed the lowest year-on-year increase since March 2021. The country's consumer price index (CPI) increased by 2% year-on-year, down from July's 2.6%, matching economists' expectations from a Reuters poll. On a month-on-month basis, the CPI rose by 0.4%, slightly above the expected 0.3%.

| ASIAN INDICES | CLOSE | PREVIOUS | 1D% | 5D% | 1M% | YTD% |
|---------------|----------|----------|-------|-------|-------|-------|
| Hang Seng | 17691.97 | 17989.07 | -1.65 | -0.60 | 4.41 | 3.78 |
| Nikkei 225 | 38700.87 | 38647.75 | 0.14 | 1.55 | 7.77 | 15.65 |
| Shanghai | 2811.04 | 2842.21 | -1.10 | -1.56 | -3.25 | -5.51 |



COMMODITIES MARKET SUMMARY

SELECTED ITEMS

Gold prices edged lower this morning as investors awaited key U.S. economic data to assess the potential size of the Federal Reserve's expected interest rate cut this month. Meanwhile, Brent oil prices declined in Asian trading, with concerns over a sluggish Chinese economy dampening demand, overshadowing the effects of a blockade at oil production facilities in Libya.

| COMMODITY | LAST | CLOSE | % CHG | 1D% | 5D% | YTD% |
|-------------|---------|---------|-------|-------|-------|--------|
| Brent Crude | 77.25 | 77.28 | -0.04 | -1.95 | -4.86 | 0.26 |
| Gold | 2494.76 | 2499.45 | -0.19 | -0.16 | -0.74 | 21.16 |
| Palladium | 973.03 | 892.50 | 9.02 | -7.80 | -7.34 | -18.66 |
| Platinum | 922.90 | 926.60 | -0.40 | -0.29 | -3.79 | -6.14 |
| Silver | 28.42 | 28.55 | -0.46 | -1.07 | -4.55 | 20.02 |

BRENT CRUDE

One-year



PLATINUM

One-year



GOLD

One-year



| CURRENCY PAIR | LAST | CLOSE | % CHG | 1D% | 5D% | YTD% |
|---------------|--------|--------|-------|------|-------|-------|
| USDZAR | 17.88 | 17.83 | 0.29 | 0.01 | 0.59 | -2.70 |
| GBPZAR | 23.48 | 23.45 | 0.11 | 0.21 | 0.25 | 0.66 |
| EURZAR | 19.77 | 19.74 | 0.18 | 0.23 | -0.29 | -2.24 |
| AUDZAR | 12.06 | 12.11 | -0.41 | 0.39 | 0.84 | -2.79 |
| EURUSD | 1.11 | 1.11 | -0.13 | 0.23 | -0.80 | 0.31 |
| USDJPY | 146.50 | 146.92 | -0.28 | 0.51 | 1.66 | 4.17 |
| GBPUSD | 1.31 | 1.31 | -0.11 | 0.14 | -0.33 | 3.24 |
| USDCHF | 0.85 | 0.85 | 0.05 | 0.25 | 0.57 | 1.25 |

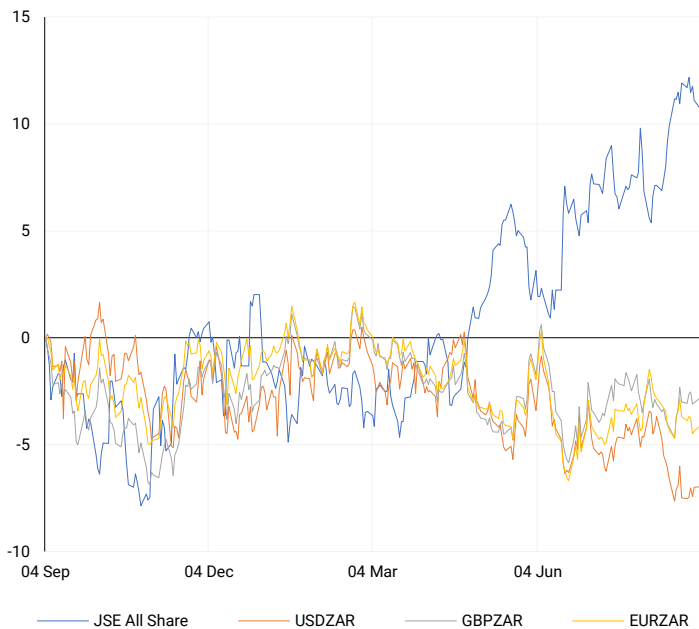
CURRENCY MARKET SUMMARY

SELECTED ITEMS

The South African rand remained stable on Monday as markets awaited the release of second-quarter gross domestic product (GDP) data. The dollar remained near a two-week high against the yen and the euro this morning as investors anticipated a series of economic reports, including Friday's U.S. payrolls, which are expected to impact the size of the Federal Reserve's upcoming interest rate cut.

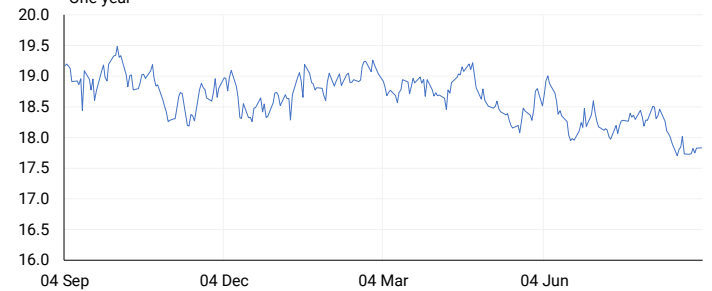
CURRENCY PAIRS vs JSE ALL SHARE

Normalised percentage performances



USDZAR

One-year



EURUSD

One-year



SOURCES | JSE, IRESS, MONEYWEB, CNBC, BBC, CNN

Disclaimer: This note is prepared for Sanlam Private Wealth (Pty) Ltd, by K2013143132 (Pty) Ltd trading as ThompsonGreen. ThompsonGreen is an independent company contracted to Sanlam Private Wealth (Pty) Ltd. The views expressed in this note are those of ThompsonGreen and/or its analysts and not necessarily the views of Sanlam Private Wealth (Pty) Ltd, Sanlam or any officer or agent thereof. K2013143132 (Pty) Ltd trading as ThompsonGreen is a research house and not a registered broker, financial adviser or financial service provider. Our editors and customer services teams also do not give personal investment advice. The information in this document is general advice only and may not be appropriate to your particular investment objectives, financial situation or particular needs. Before investing, or if you are in any doubt about your personal situation, you should seek professional advice from a stockbroker or independent financial adviser authorised by the Financial Sector Conduct Authority.