

GLOBAL OVERVIEW | SELECTED INDICES

SOUTH AFRICAN INDICES						
	CLOSE	PREVIOUS	1D%	5D%	1M%	YTD%
All Share	82156.76	83483.36	-1.59	-2.83	2.01	6.85
Top 40	74806.97	76041.39	-1.62	-2.97	1.85	6.12
Financial 15	20587.22	20838.33	-1.21	-1.62	6.01	15.19
Industrial 25	112576.63	113915.15	-1.18	-1.40	4.60	8.54
Resource 10	54269.83	56015.89	-3.12	-7.50	-8.36	-5.67
Mid Cap	85385.33	87481.69	-2.40	-4.14	0.12	6.18
Small Cap	84632.19	85559.23	-1.08	-1.01	5.20	16.74
Banks	13010.89	13212.49	-1.53	-2.16	5.70	18.84
Retailers	7193.70	7407.20	-2.88	-3.48	7.47	15.40
Property (J253) - TR	2300.02	2289.67	0.45	-0.15	8.08	23.41

AMERICAN INDICES						
	CLOSE	PREVIOUS	1D%	5D%	1M%	YTD%
Dow Jones	40936.93	41563.08	-1.51	-0.76	3.02	8.62
Nasdaq	17136.30	17713.63	-3.26	-3.48	2.15	14.16
S&P 500	5528.93	5648.40	-2.12	-1.72	3.41	15.91
US VIX	20.72	15.55	33.25	34.28	-11.42	66.43

EUROPEAN INDICES						
	CLOSE	PREVIOUS	1D%	5D%	1M%	YTD%
CAC 40	7575.10	7646.42	-0.93	0.12	4.46	0.42
DAX 30	18747.11	18930.85	-0.97	0.35	6.15	11.91
Eurostoxx 50	4910.90	4971.60	-1.22	0.19	5.91	8.61
FTSE	8298.46	8363.84	-0.78	-0.56	1.51	7.31

ASIAN INDICES						
	CLOSE	PREVIOUS	1D%	5D%	1M%	YTD%
Hang Seng	17651.49	17691.97	-0.23	-1.25	4.17	3.54
Nikkei 225	38686.31	38700.87	-0.04	1.04	7.73	15.61
Shanghai	2802.98	2811.04	-0.29	-1.61	-3.52	-5.78

EARLY MORNING MARKETS						
	LAST	CLOSE	% CHG	1D%	5D%	YTD%
TENCENT	373.60	377.80	-1.11	-1.10	-1.05	30.19
BHP AUS	3876.00	3963.00	-2.20	-1.74	-4.16	-21.38

NOTE : 5D% and 1M% are rolling percentage moves

INTERNATIONAL ECONOMIC CALENDAR | SELECTED EVENTS

TIME	AREA	TODAY'S EVENTS & RELEASES	PERIOD	EXP.	PREV.
9:15	ZA	S&P Global PMI	Aug	50.50	49.30
12:00	ZA	Business Confidence	Q3	37.00	35.00
16:00	US	JOLTs Job Openings	Jul	8.09M	8.18M
---	---	---	---	---	---
---	---	---	---	---	---

TIME	AREA	PREVIOUS SESSION'S RELEASES	PERIOD	EXP.	ACT.
11:30	ZA	GDP Growth Rate q/q	Q2	0.40%	0.40%
16:00	US	ISM Manufacturing PMI	Aug	47.50	47.20
---	---	---	---	---	---
---	---	---	---	---	---
---	---	---	---	---	---

JSE ALL SHARE | BEST AND WORST ONE-DAY PERFORMERS

BEST ONE-DAY % PERFORMERS						
	CODE	CLOSE	1D%	5D%	YTD%	
Sun International Ltd	SUI	4500	4.63	9.06	9.76	
KAP Limited	KAP	342	3.01	6.21	30.53	
Brait PLC	BAT	104	1.96	-4.59	-42.86	
NEPI Rockcastle N.V.	NRP	14600	1.74	1.92	15.52	
MAS P.L.C	MSP	1740	1.46	0.06	0.52	
BID Corporation Ltd	BID	45154	1.38	7.28	5.83	

WORST ONE-DAY % PERFORMERS						
	CODE	CLOSE	1D%	5D%	YTD%	
Aspen Pharmacare Hldgs Ltd	APN	20600	-13.23	-11.23	1.23	
Northam Platinum Hldgs Ltd	NPH	9800	-7.55	-21.91	-30.21	
Sibanye Stillwater Ltd	SSW	1598	-7.20	-17.59	-35.82	
Anglo American Plat Ltd	AMS	60090	-6.26	-12.99	-37.67	
Impala Platinum Hlgs Ltd	IMP	7802	-6.00	-12.73	-14.52	

DIVIDEND DATA

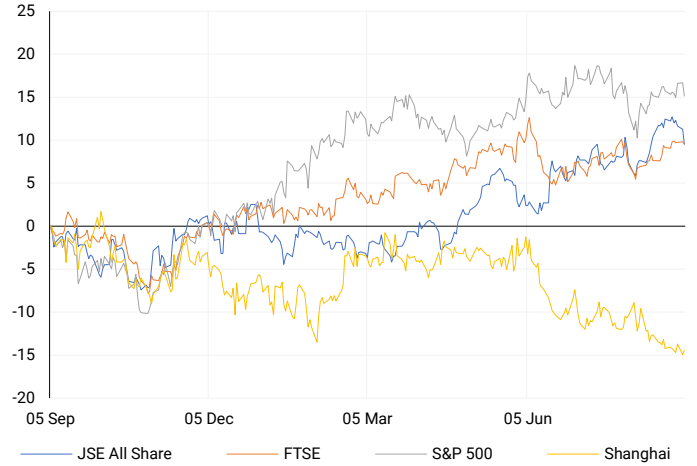
COMPANY	CODE	EXPECTED DIVIDEND	COMPANY	CODE	EXPECTED DIVIDEND
Nedbank Group	NED	971 ZARc	Lighthouse Properties plc	LTE	1.22 EURc
Merafe Resources	MRF	20 ZARc	Capital & Regional plc	CRP	2.85 GBPp
Resilient REIT	RES	218.97 ZARc	---	---	---
Homechoice International plc	HIL	95 ZARc	---	---	---
Standard Bank Group	SBPP	451.1 ZARc	---	---	---

SOURCES | JSE, IRESS, MONEYWEB, CNBC, BBC, CNN

PLEASE SEE THE BOTTOM OF THE LAST PAGE FOR THE FULL DISCLAIMER

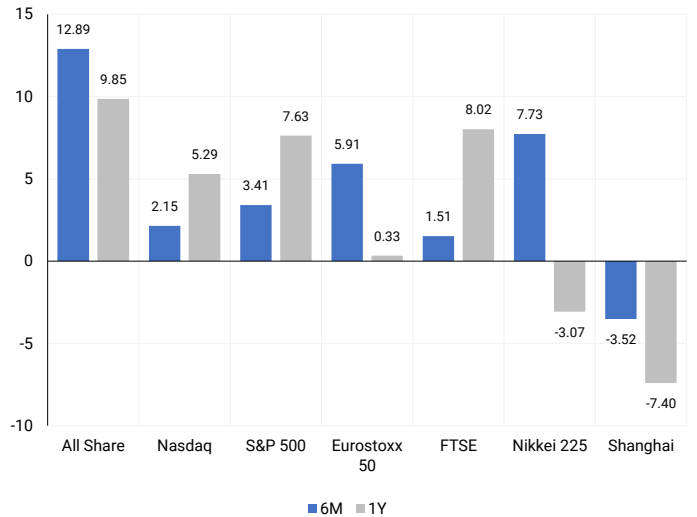
INTERNATIONAL INDICES

Normalised percentage performances - In rand terms



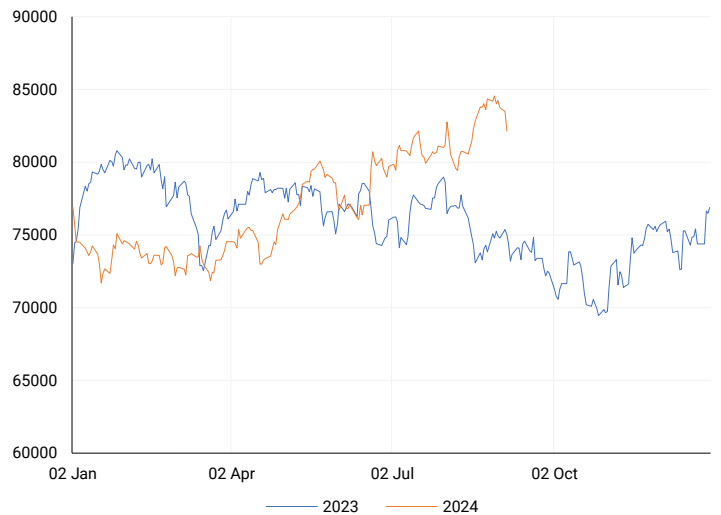
INTERNATIONAL INDICES

6-month & 1-year percentage performances



JSE ALL SHARE INDEX

2023 v 2024 to date



Ex div Wed, 04 September

LOCAL EQUITIES | JSE LARGE CAP COMPANIES (Cents Per Share)

COMPANY	CLOSE	PREVIOUS	1D%	5D%	1M%	YTD%
Absa Group Limited	17183	17561	-2.15	-2.34	11.45	4.96
Anglo American plc	49696	52358	-5.08	-7.73	-4.77	4.96
Anglo American Plat Ltd	60090	64102	-6.26	-12.99	-8.28	-37.67
Anglogold Ashanti Ltd	51403	52546	-2.18	-5.13	2.24	45.45
Anheuser-Busch InBev SA NV	110598	109188	1.29	0.55	-4.07	-7.85
BHP Group Limited	46710	48324	-3.34	-5.63	-4.33	-26.26
BID Corporation Ltd	45154	44541	1.38	7.28	3.23	5.83
British American Tob plc	67580	66750	1.24	3.38	3.61	24.80
Compagnie Fin Richemont	280112	278448	0.60	-1.26	3.75	9.09
Capitec Bank Hldgs Ltd	289000	294278	-1.79	-2.32	2.66	42.62
Discovery Ltd	15062	15245	-1.20	-1.03	8.36	4.83
Firststrand Ltd	8447	8550	-1.20	-2.01	5.63	14.91
Gold Fields Ltd	24791	24623	0.68	-2.91	-18.23	-10.75
Glencore plc	8999	9388	-4.14	-7.24	-4.45	-19.40
Impala Platinum Hlgs Ltd	7802	8300	-6.00	-12.73	-11.44	-14.52
Kumba Iron Ore Ltd	32447	34074	-4.77	-10.49	-15.03	-47.22
Mondi plc	34139	34762	-1.79	-0.86	0.65	-5.95
MTN Group Ltd	8610	8765	-1.77	-10.31	14.59	-25.45
Naspers Ltd -N-	364225	364326	-0.03	-0.05	6.67	16.44
Prosus N.V.	66272	66090	0.28	1.17	6.46	18.26
South32 Limited	3605	3737	-3.53	-2.93	1.26	-14.55
Standard Bank Group Ltd	23509	23903	-1.65	-2.93	7.60	12.97
Shoprite Holdings Ltd	29500	31337	-5.86	-5.13	0.01	7.25
Sanlam Limited	8507	8581	-0.86	-0.21	8.45	16.85
Sasol Limited	12747	13416	-4.99	-12.15	-4.86	-31.21
Sibanye Stillwater Ltd	1598	1722	-7.20	-17.59	-17.88	-35.82
Vodacom Group Ltd	11017	11042	-0.23	-3.71	12.13	3.93

SOUTH AFRICAN MARKET SUMMARY

SELECTED ITEMS

On Tuesday, the South African stock market saw the Top-40 index close 1.6% lower. The decline followed news that the country's GDP grew by 0.4% in the second quarter, slightly below the 0.5% forecast. This growth was driven by increased consumer spending and improved power availability, but declines in agriculture, mining, and transport output weighed on the economy. Aspen Pharmacare missed its mid-single digit core profit growth target but is optimistic about future earnings from GLP-1 drug contracts. Motus Holdings, South Africa's largest vehicle dealership, reported a 28% drop in annual profit.

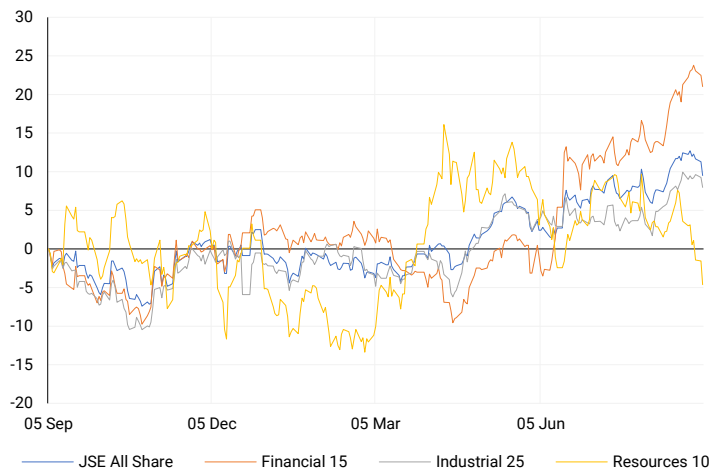
JSE ALL SHARE

One-year



LOCAL INDICES

Normalised percentage performances



EXPECTED COMPANY REPORTING SCHEDULE

COMPANY	CODE	RELEASE	DATE
Cashbuild	CSB	Final	4 Sep '24
Woolworths	WHL	Final	4 Sep '24
Shoprite	SHP	Final	5 Sep '24
Bell Equipment	BEL	Interim	9 Sep '24
Truworths	TRU	Final	12 Sep '24

BANK AND OTHER SELECTE PREFERENCE SHARES

COMPANY	CODE	CLOSE	CLEAN YIELD	NEXT LDT (Est.)
Investec Limited	INPR	8899	11.24	Thu, 06 Jun '24
Standard Bank	SBPP	9170	11.15	Thu, 05 Sep '24
Absa	ABSP	83407	11.48	Thu, 12 Sep '24
Capitec	CPIP	9672	9.69	Thu, 19 Sep '24
Steinhoff	SHFF	9734	10.47	Thu, 17 Oct '24
Grindrod	GNDP	9200	12.22	Thu, 19 Sep '24
Netcare	NTCP	8173	11.82	Thu, 31 Oct '24
Discovery	DSBP	9654	11.91	Thu, 19 Sep '24
Invicta	IVTP	---	13.41	Thu, 27 Jun '24

LOCAL SENS ANNOUNCEMENTS

SELECTED RELEASE

SHOPRITE HOLDINGS LIMITED – Group results

The company's financial performance for 2024 showed positive growth in most areas. Merchandise sales increased by 12% to R240.7 billion, and trading profit rose by 12.4% to R13.4 billion. Operating profit saw a 6.6% rise, reaching R13.2 billion, while profit before tax was up 2.7% at R9.4 billion. After tax, the profit for the year was R6.5 billion, a 3.5% increase. Earnings per share also improved, with headline earnings up 7.2% to 1 250.5 cents and basic earnings up 4% to 1 207.7 cents. The company declared a final dividend of 445 cents per share, which will be paid out on 30 September 2024.

SHP | -5.33% OPEN | 30875c HIGH | 30875c LOW | 29289c CLOSE | 29500c TIME | 08:00

ASPEN PHARMACARE HOLDINGS LIMITED – Condensed group financial results

Aspen's financial results for the year showed mixed performance. Revenue grew by 10% to R44.7 billion, with a 5% increase when adjusted for constant exchange rates (CER). Normalised EBITDA saw a slight increase of 1%, but decreased by 3% in CER, reaching R11.3 billion. Normalised headline earnings per share remained almost unchanged at 1 492.1 cents, while headline earnings per share dropped by 3% to 1 356.6 cents. Earnings per share declined significantly by 16% to 991.4 cents. On a positive note, operating cash flow per share rose by 13% to 1 401.4 cents, and the dividend to shareholders was increased by 5% to 359 cents per share.

APN | -13.23% OPEN | 23742c HIGH | 24086c LOW | 20535c CLOSE | 20600c TIME | 13:47

MOTUS HOLDINGS LIMITED – Audited consolidated and separate AFS

The company's financial performance for the year showed mixed results. Revenue increased by 7% to R113 764 million, but operating profit fell by 4% to R5 503 million. Both earnings per share and headline earnings per share dropped significantly by 28%, to 1 450 cents and 1 479 cents per share, respectively. On the positive side, cash flows from operating activities improved to R3 533 million, compared to an outflow in the previous year. The total dividend per share was reduced to 520 cents, down from 710 cents in 2023.

MTH | -5.77% OPEN | 11910c HIGH | 12400c LOW | 11674c CLOSE | 11700c TIME | 07:05

LOCAL EQUITIES | JSE MID CAP COMPANIES (Cents Per Share)

COMPANY	CODE	CLOSE	PREVIOUS	1D%	1M%	YTD%
Aspen Pharmacare Hldgs Ltd	APN	20600	23742	-13.23	-15.19	1.23
African Rainbow Min Ltd	ARI	16730	17232	-2.91	-19.36	-16.35
AVI Ltd	AVI	9927	10103	-1.74	2.26	20.96
Barloworld Ltd	BAW	9228	9366	-1.47	1.42	16.81
Bidvest Ltd	BVT	28257	28528	-0.95	5.60	12.00
Bytes Technology Grp PLC	BYI	10790	10995	-1.86	-3.66	-24.66
Capital&Counties Prop plc	CCO	3452	3459	-0.20	0.79	6.22
Clicks Group Ltd	CLS	36919	37244	-0.87	4.81	13.35
Dis-Chem Pharmacies Ltd	DCP	3490	3570	-2.24	-1.94	13.72
Exxaro Resources Ltd	EXX	15300	15780	-3.04	-18.46	-25.18
Fortress Real Est INV B	FFB	1910	1905	0.26	13.22	33.01
Growthpoint Prop Ltd	GRT	1387	1388	-0.07	10.87	18.75
Harmony GM Co Ltd	HAR	16669	17093	-2.48	-2.42	39.38
Hammerson plc	HMN	665	666	-0.15	-1.48	-2.21
Investec Ltd	INL	13413	13571	-1.16	-1.78	6.80
Investec plc	INP	13495	13634	-1.02	-1.49	7.15
Italtile Ltd	ITE	1200	1247	-3.77	0.00	7.14
Life Healthc Grp Hldgs Ltd	LHC	1408	1429	-1.47	6.26	-23.35
MultiChoice Group Ltd	MCG	11080	11053	0.24	1.87	36.76
Montauk Renewables Inc	MKR	8500	8500	0.00	-23.08	-50.58
Mr Price Group Ltd	MRP	23562	24359	-3.27	9.60	50.26
Momentum Met Hldgs Ltd	MTM	2736	2759	-0.83	3.13	24.99
Ninety One Plc	N91	3800	3892	-2.36	-1.22	-11.87
Nedbank Group Ltd	NED	29325	29737	-1.39	6.64	35.62
Northam Platinum Hldgs Ltd	NPH	9800	10600	-7.55	-27.84	-30.21
NEPI Rockcastle N.V.	NRP	14600	14350	1.74	7.11	15.52
Netcare Limited	NTC	1344	1360	-1.18	3.31	-5.62
Ninety One Limited	NY1	3792	3877	-2.19	-0.13	-11.75
Old Mutual Limited	OMU	1252	1271	-1.49	5.03	-4.13
OUTsurance Group Ltd	OUT	4815	4768	0.99	2.45	14.10
Pick n Pay Stores Ltd	PIK	2368	2430	-2.55	4.83	1.76
Pepkor Holdings Ltd	PPH	2129	2185	-2.56	5.29	8.46
Quilter Plc	QLT	3160	3240	-2.47	3.27	30.15
Redefine Properties Ltd	RDF	470	471	-0.21	10.33	22.08
Remgro Ltd	REM	14293	14611	-2.18	7.38	-12.03
Resilient REIT Limited	RES	5728	5683	0.79	15.07	29.33
Reinet Investments S.C.A	RNI	47754	47802	-0.10	-0.54	2.43
Sappi Ltd	SAP	4427	4515	-1.95	-9.80	0.16
Santam Limited	SNT	34629	35100	-1.34	9.62	20.84
The Spar Group Ltd	SPP	12550	12766	-1.69	1.98	6.45
Sirius Real Estate Ltd	SRE	2245	2260	-0.66	1.77	1.35
Tiger Brands Ltd	TBS	22879	23333	-1.95	3.55	13.66
Transaction Capital Ltd	TCP	265	271	-2.21	-5.36	-66.79
The Foschini Group Limited	TFG	14325	14575	-1.72	7.39	29.10
Thungela Resources Ltd	TGA	11171	11400	-2.01	-8.52	-27.37
Telkom SA SOC Ltd	TKG	2730	2795	-2.33	17.77	-8.20
Truworths Int Ltd	TRU	9384	9712	-3.38	4.27	26.21
Woolworths Holdings Ltd	WHL	6267	6445	-2.76	8.28	-13.20
Zeda Limited	ZZD	1319	1306	1.00	7.24	3.45

LOCAL EQUITIES | JSE SMALL CAP COMPANIES (Cents Per Share)

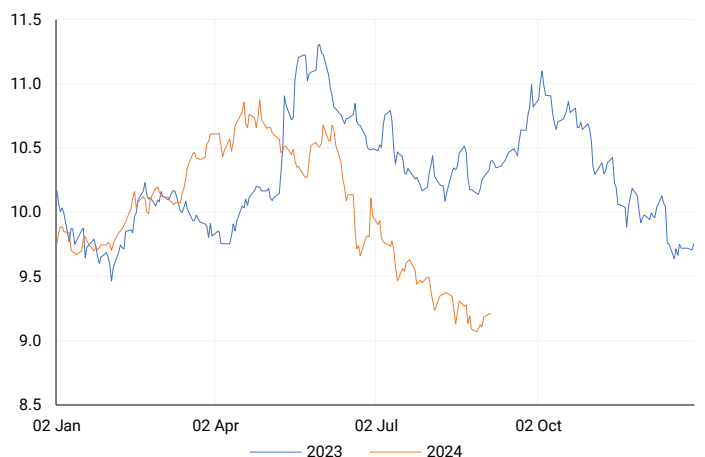
COMPANY	CODE	CLOSE	PREVIOUS	1D%	1M%	YTD%
ArcelorMittal SA Limited	ACL	129	122	5.74	-0.77	-21.34
ADVTECH Ltd	ADH	3232	3315	-2.50	10.61	31.70
Altron Limited A	AEL	1660	1705	-2.64	-2.35	61.95
AECI Limited	AFE	10360	10715	-3.31	-0.39	-5.55
Alexander Forbes Grp Hldgs	AFH	665	660	0.76	1.22	0.76
Afrimat Limited	AFT	6485	6568	-1.26	-4.01	2.94
African Rainbow Cap Inv	AIL	648	674	-3.86	-5.68	32.52
Adcock Ingram Hldgs Ltd	AIP	6576	6531	0.69	13.38	9.42
Astral Foods Ltd	ARL	17392	17275	0.68	3.96	18.66
Attacq Limited	ATT	1142	1138	0.35	5.45	23.86
Brait PLC	BAT	104	102	1.96	15.56	-42.86
Blue Label Telecoms Ltd	BLU	486	493	-1.42	13.82	25.26
Burstone Group	BTN	866	871	-0.57	10.74	8.25
Coronation Fund Mngrs Ld	CML	3916	4009	-2.32	5.16	25.67
Curro Holdings Limited	COH	1305	1325	-1.51	9.66	12.02
Cashbuild Ltd	CSB	16355	16652	-1.78	-0.88	-2.02
DRD Gold Ltd	DRD	1445	1495	-3.34	-18.87	-8.37
Datatec Ltd	DTC	3570	3590	-0.56	2.03	-11.85
Emira Property Fund Ltd	EMI	1051	1059	-0.76	-4.45	22.92
Equites Prop Fund Ltd	EQU	1313	1331	-1.35	-0.91	-5.88
Famous Brands Ltd	FBR	5759	5818	-1.01	7.66	-0.59
Fairvest Limited B	FTB	440	441	-0.23	6.28	27.91
Grindrod Ltd	GND	1430	1432	-0.14	-7.02	24.78
Hosken Cons Inv Ltd	HCI	18423	18647	-1.20	1.54	-9.07
Hudaco Industries Ltd	HDC	18540	18396	0.78	2.43	15.42
Hyprop Inv Ltd	HYP	3800	3791	0.24	18.53	22.15
JSE Ltd	JSE	11250	11500	-2.17	5.78	21.70
KAP Industrial Hldgs Ltd	KAP	342	332	3.01	11.76	30.53
Karooooo Ltd	KRO	66400	66101	0.45	-1.48	39.79
PSG Konsult Limited	KST	1725	1745	-1.15	5.38	12.38
Libstar Holdings Ltd	LBR	420	403	4.22	4.74	20.00
Lighthouse Properties plc	LTE	810	811	-0.12	-0.98	10.20
Industrials REIT Limited	MLI	1.6	1.55	3.23	0.00	128.57
MAS P.L.C	MSP	1740	1715	1.46	-6.70	0.52
Metair Investments Ltd	MTA	1452	1532	-5.22	5.75	-18.20
Motus Holdings Ltd	MTH	11700	12417	-5.77	13.85	15.27
Murray & Roberts Hldgs	MUR	281	294	-4.42	-8.17	88.59
Oceana Group Ltd	OCE	6700	6822	-1.79	-4.29	-5.19
Omnia Holdings Ltd	OMN	6323	6355	-0.50	-2.57	-3.27
Pan African Resource plc	PAN	684	724	-5.52	-0.87	67.24
PPC Limited	PPC	408	413	-1.21	7.94	2.26
Raubex Group Ltd	RBX	4951	4960	-0.18	10.02	78.61
RFG Holdings Limited	RFG	1585	1590	-0.31	2.59	17.41
Reunert Ltd	RLO	7642	7760	-1.52	6.52	27.49
SA Corp Real Estate Ltd	SAC	274	274	0.00	1.86	18.10
Super Group Ltd	SPG	2722	2780	-2.09	-8.96	-8.50
Stor-Age Prop REIT Ltd	SSS	1441	1449	-0.55	7.70	10.34
Southern Sun LTD	SSU	663	665	-0.30	9.05	26.29
Sun International Ltd	SUI	4500	4301	4.63	19.68	9.76
Tharisa plc	THA	1850	1900	-2.63	-7.50	22.44
Tsogo Sun Gaming Ltd	TSG	1190	1196	-0.50	7.21	-2.86
Vukile Property Fund Ltd	VKE	1771	1772	-0.06	7.53	25.42
Wilson Bayly Hlm-Ovc Ltd	WBO	20200	20273	-0.36	12.04	55.31

10-YEAR BOND YIELD | SELECTED ITEMS (Basis Point Change)

REGION	YIELD	1D	1M	1Y
United States	3.83%	-7	4	--
United Kingdom	3.99%	-6	16	-44
Germany	2.27%	-6	10	-27
Japan	0.88%	-2	-6	--
South African 10Y	9.22%	-1	-15	-112

SOUTH AFRICAN 10-YEAR

2023 vs 2024 to date

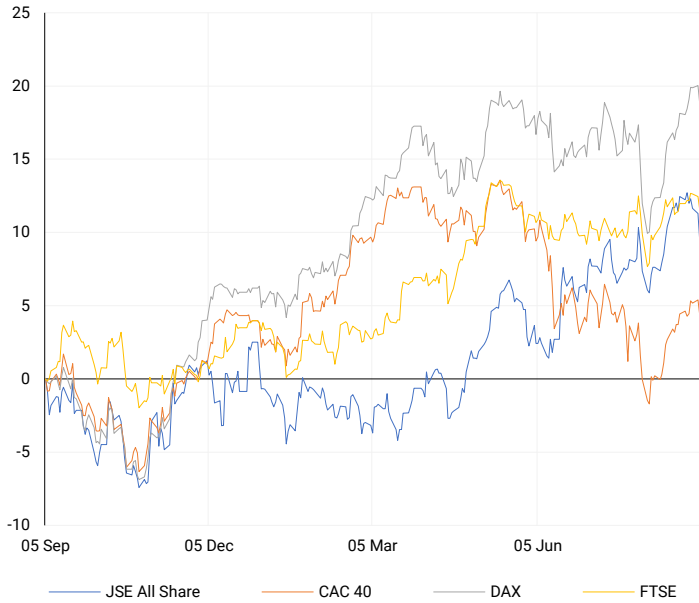


GLOBAL INTEREST RATES | SELECTED ITEMS

REGION	DATE CHANGED	CURRENT RATE
United States	Wed, 26 Jul '23	5.25%-5.50%
United Kingdom	Thu, 03 Aug '23	5.25%
European	Thu, 27 Jul '23	4.25%
SA Repo Rate	Thu, 25 May '23	8.25%
SA Prime Rate	Thu, 25 May '23	11.75%

EUROPEAN INDICES

Normalised percentage performances



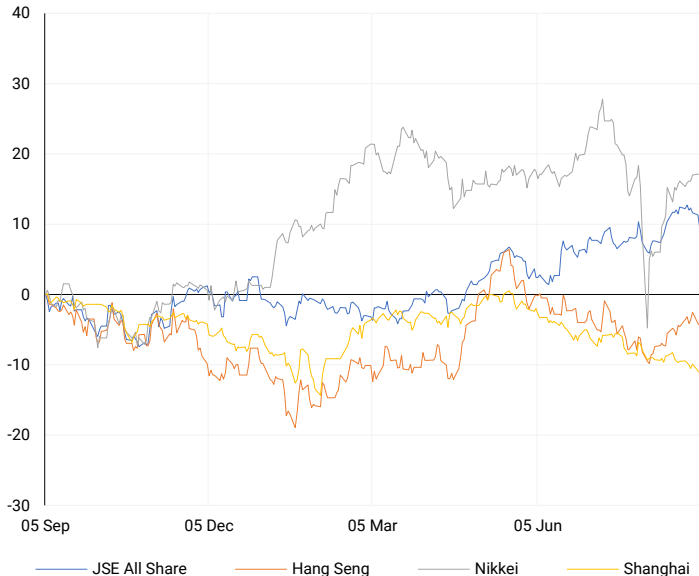
AMERICAN INDICES

Normalised percentage performances



ASIAN INDICES

Normalised percentage performances

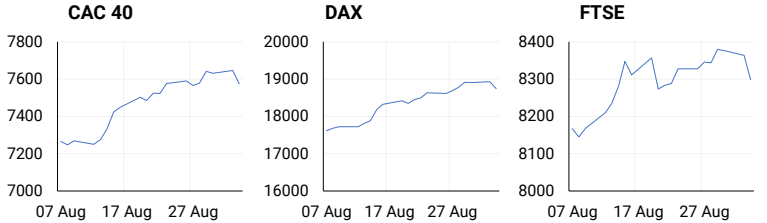


EUROPEAN MARKET SUMMARY

SELECTED ITEMS

European stocks closed lower on Tuesday, extending a sluggish start to September. In the U.K., data from the British Retail Consortium revealed that total sales grew by just 1% year-on-year in August, a slowdown compared to the 4.1% growth seen in August 2023. Food sales increased by 2.9% over the three months leading to August, while non-food sales declined by 1.7%. Additionally, the Office for National Statistics reported a drop in U.K. mergers and acquisitions, with the number of deals falling from 463 in the first quarter to 385 in the second quarter.

EUROPEAN INDICES	CLOSE	PREVIOUS	1D%	5D%	1M%	YTD%
CAC 40	7575.10	7646.42	-0.93	0.12	4.46	0.42
DAX 30	18747.11	18930.85	-0.97	0.35	6.15	11.91
Eurostoxx 50	4910.90	4971.60	-1.22	0.19	5.91	8.61
FTSE	8298.46	8363.84	-0.78	-0.56	1.51	7.31

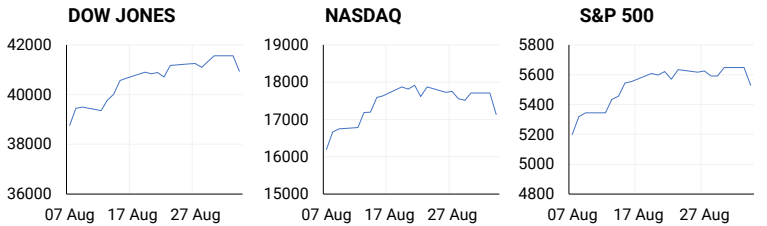


AMERICAN MARKET SUMMARY

SELECTED ITEMS

U.S. stocks fell sharply on Tuesday, marking the beginning of September, which is historically a challenging month for the market. The S&P 500, Nasdaq Composite, and Dow Jones Industrial Average all posted their largest daily declines since early August. Market sentiment was dampened by data from the Institute for Supply Management showing that U.S. manufacturing remained weak, despite a slight improvement in August from July's eight-month low. Traders are now focused on upcoming labour market reports, especially Friday's non-farm payrolls data.

AMERICAN INDICES	CLOSE	PREVIOUS	1D%	5D%	1M%	YTD%
Dow Jones	40936.93	41563.08	-1.51	-0.76	3.02	8.62
Nasdaq	17136.30	17713.63	-3.26	-3.48	2.15	14.16
S&P 500	5528.93	5648.40	-2.12	-1.72	3.41	15.91
US VIX	20.72	15.55	33.25	34.28	-11.42	66.43

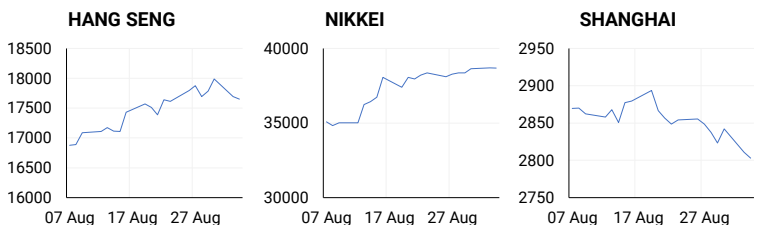


ASIAN MARKET SUMMARY

SELECTED ITEMS

Asia-Pacific markets dropped sharply this morning, with Japan's Nikkei 225 leading the decline. In China, the Caixin services purchasing managers index (PMI) for August indicated that the service sector's growth slowed, with the PMI decreasing to 51.6 from 52.1 in July. This data adds to concerns about China's ongoing economic struggles and has intensified calls for additional stimulus measures from Beijing to support a stronger recovery.

ASIAN INDICES	CLOSE	PREVIOUS	1D%	5D%	1M%	YTD%
Hang Seng	17651.49	17691.97	-0.23	-1.25	4.17	3.54
Nikkei 225	38686.31	38700.87	-0.04	1.04	7.73	15.61
Shanghai	2802.98	2811.04	-0.29	-1.61	-3.52	-5.78



COMMODITIES MARKET SUMMARY

SELECTED ITEMS

Gold prices remained stable this morning as investors awaited the upcoming U.S. payrolls report, which could impact the Federal Reserve's decisions on interest rate cuts later this year. Meanwhile, oil prices continued to decline, following a more than 4% drop the previous day. This ongoing decrease is driven by expectations that the political dispute halting Libyan exports might be resolved, along with concerns about weaker global demand growth.

COMMODITY	LAST	CLOSE	% CHG	1D%	5D%	YTD%
Brent Crude	73.37	73.66	-0.39	-4.68	-7.68	-4.44
Gold	2495.90	2492.96	0.12	-0.26	-1.25	20.84
Palladium	943.70	947.76	-0.43	6.19	-2.79	-13.63
Platinum	909.55	908.35	0.13	-1.97	-5.63	-7.99
Silver	28.05	28.06	-0.04	-1.72	-6.40	17.96

BRENT CRUDE

One-year



PLATINUM

One-year



GOLD

One-year



CURRENCY PAIR	LAST	CLOSE	% CHG	1D%	5D%	YTD%
USDZAR	17.98	17.98	-0.01	0.84	1.36	-1.88
GBPZAR	23.59	23.58	0.05	0.54	0.32	1.20
EURZAR	19.88	19.86	0.12	0.61	0.12	-1.64
AUDZAR	12.05	12.08	-0.20	-0.27	0.33	-3.05
EURUSD	1.11	1.10	0.13	-0.26	-1.26	0.05
USDJPY	145.17	145.48	-0.21	-0.98	1.05	3.15
GBPUSD	1.31	1.31	0.03	-0.23	-1.10	3.00
USDCHF	0.85	0.85	-0.27	-0.19	1.03	1.06

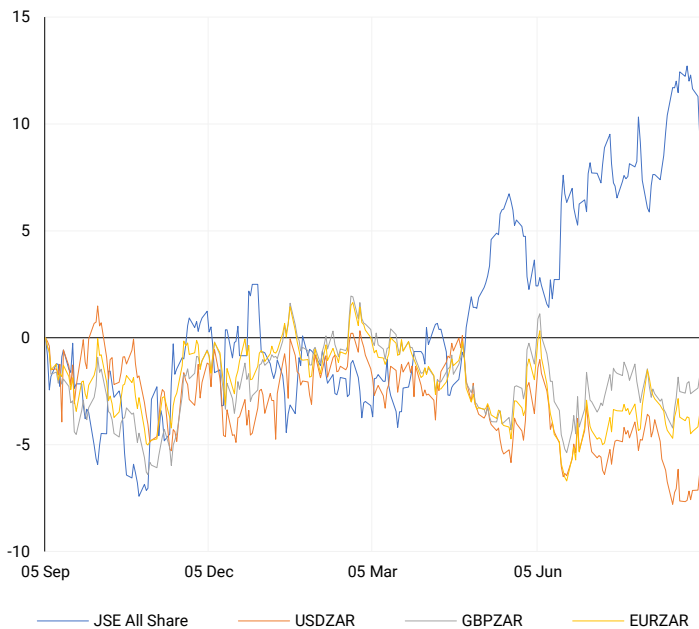
CURRENCY MARKET SUMMARY

SELECTED ITEMS

The South African rand weakened on Tuesday after data revealed that the country's second-quarter economic growth was slightly below expectations. Meanwhile, the U.S. dollar remained strong against most major currencies, as it typically attracts safe-haven flows, even when concerns are centred around the U.S. economy.

CURRENCY PAIRS vs JSE ALL SHARE

Normalised percentage performances



USDZAR

One-year



EURUSD

One-year



SOURCES | JSE, IRESS, MONEYWEB, CNBC, BBC, CNN

Disclaimer: This note is prepared for Sanlam Private Wealth (Pty) Ltd, by K2013143132 (Pty) Ltd trading as ThompsonGreen. ThompsonGreen is an independent company contracted to Sanlam Private Wealth (Pty) Ltd. The views expressed in this note are those of ThompsonGreen and/or its analysts and not necessarily the views of Sanlam Private Wealth (Pty) Ltd, Sanlam or any officer or agent thereof. K2013143132 (Pty) Ltd trading as ThompsonGreen is a research house and not a registered broker, financial adviser or financial service provider. Our editors and customer services teams also do not give personal investment advice. The information in this document is general advice only and may not be appropriate to your particular investment objectives, financial situation or particular needs. Before investing, or if you are in any doubt about your personal situation, you should seek professional advice from a stockbroker or independent financial adviser authorised by the Financial Sector Conduct Authority.