

GLOBAL OVERVIEW | SELECTED INDICES

SOUTH AFRICAN INDICES						
	CLOSE	PREVIOUS	1D%	5D%	1M%	YTD%
All Share	81915.40	82156.76	-0.29	-2.50	1.71	6.53
Top 40	74533.60	74806.97	-0.37	-2.60	1.48	5.73
Financial 15	20682.10	20587.22	0.46	-1.33	6.50	15.72
Industrial 25	111647.00	112576.63	-0.83	-1.85	3.74	7.65
Resource 10	53925.10	54269.83	-0.64	-5.74	-8.94	-6.27
Mid Cap	84957.40	85385.33	-0.50	-4.23	-0.39	5.65
Small Cap	84836.90	84632.19	0.24	-0.71	5.45	17.03
Banks	13085.50	13010.89	0.57	-1.48	6.30	19.52
Retailers	7132.72	7193.70	-0.85	-4.40	6.56	14.42
Property (J253) - TR	2300.02	2300.02	0.00	-0.40	8.08	23.41

AMERICAN INDICES						
	CLOSE	PREVIOUS	1D%	5D%	1M%	YTD%
Dow Jones	40974.97	40936.93	0.09	-0.28	3.11	8.72
Nasdaq	17084.30	17136.30	-0.30	-2.69	1.84	13.81
S&P 500	5520.07	5528.93	-0.16	-1.29	3.25	15.73
US VIX	21.32	20.72	2.90	24.61	-8.85	71.24

EUROPEAN INDICES						
	CLOSE	PREVIOUS	1D%	5D%	1M%	YTD%
CAC 40	7500.97	7575.10	-0.98	-1.01	3.44	-0.56
DAX 30	18591.85	18747.11	-0.83	-1.01	5.27	10.99
Eurostoxx 50	4852.30	4910.90	-1.19	-1.26	4.65	7.31
FTSE	8269.60	8298.46	-0.35	-0.89	1.16	6.94

ASIAN INDICES						
	CLOSE	PREVIOUS	1D%	5D%	1M%	YTD%
Hang Seng	17457.34	17651.49	-1.10	-1.33	3.02	2.40
Nikkei 225	37047.61	38686.31	-4.24	-3.45	3.17	10.71
Shanghai	2784.28	2802.98	-0.67	-1.87	-4.17	-6.41

EARLY MORNING MARKETS						
	LAST	CLOSE	% CHG	1D%	5D%	YTD%
TENCENT	371.80	372.80	-0.27	-1.32	-0.37	28.46
BHP AUS	3894.00	3864.00	0.78	-2.50	-5.20	-23.35

NOTE : 5D% and 1M% are rolling percentage moves

INTERNATIONAL ECONOMIC CALENDAR | SELECTED EVENTS

TIME	AREA	TODAY'S EVENTS & RELEASES	PERIOD	EXP.	PREV.
11:00	ZA	Current Account	Q2	-R150.0B	-R84.6B
14:15	US	ADP Employment Change	Aug	115.0K	122.0K
14:30	US	Unemployment Claims	Aug	227.0K	231.0K
16:00	US	ISM Services PMI	Aug	51.20	51.40
---	---	---	---	---	---

TIME	AREA	PREVIOUS SESSION'S RELEASES	PERIOD	EXP.	ACT.
9:15	ZA	S&P Global PMI	Aug	50.50	50.50
12:00	ZA	Business Confidence	Q3	37.00	38.00
16:00	US	JOLTs Job Openings	Jul	8.09M	7.67M
---	---	---	---	---	---
---	---	---	---	---	---

JSE ALL SHARE | BEST AND WORST ONE-DAY PERFORMERS

BEST ONE-DAY % PERFORMERS						
	CODE	CLOSE	1D%	5D%	YTD%	
Altron Limited A	AEL	1745	5.12	-0.29	70.24	
KAP Limited	KAP	358	4.68	9.48	36.64	
Montauk Renewables Inc	MKR	8888	4.56	8.32	-48.33	
Curro Holdings Limited	COH	1360	4.21	2.26	16.74	
Italtile Ltd	ITE	1249	4.08	-1.65	11.52	
Raubex Group Ltd	RBX	5118	3.37	2.40	84.63	

WORST ONE-DAY % PERFORMERS						
	CODE	CLOSE	1D%	5D%	YTD%	
The Spar Group Ltd	SPP	11695	-6.81	-8.58	-0.81	
Compagnie Fin Richemont	CFR	261800	-6.54	-7.01	1.96	
Lighthouse Properties plc	LTE	780	-3.70	-5.45	6.12	
Impala Platinum Hlgs Ltd	IMP	7522	-3.59	-10.98	-17.59	
Norham Platinum Hldgs Ltd	NPH	9500	-3.06	-19.77	-32.35	

DIVIDEND DATA

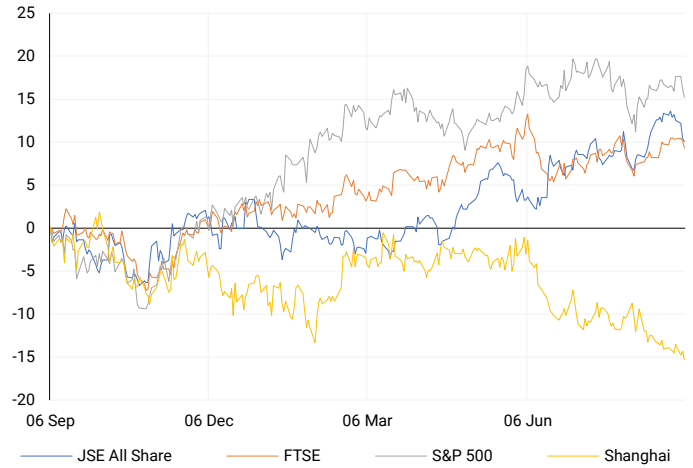
COMPANY	CODE	EXPECTED DIVIDEND	COMPANY	CODE	EXPECTED DIVIDEND
Absa Group	ABG	685 ZARc	DRDGOLD	DRD	20 ZARc
Spur Corporation	SUR	118 ZARc	Standard Bank	SBK	744 ZARc
Sabvest Capital	SBP	35 ZARc	Gold Fields	GFI	300 ZARc
Italtile	ITE	22 ZARc	ADVTECH	ADH	38 ZARc
Coronation Fund Managers	CML	153 ZARc	Reinet Investments SCA	RNI	35 EURc

SOURCES | JSE, IRESS, MONEYWEB, CNBC, BBC, CNN

PLEASE SEE THE BOTTOM OF THE LAST PAGE FOR THE FULL DISCLAIMER

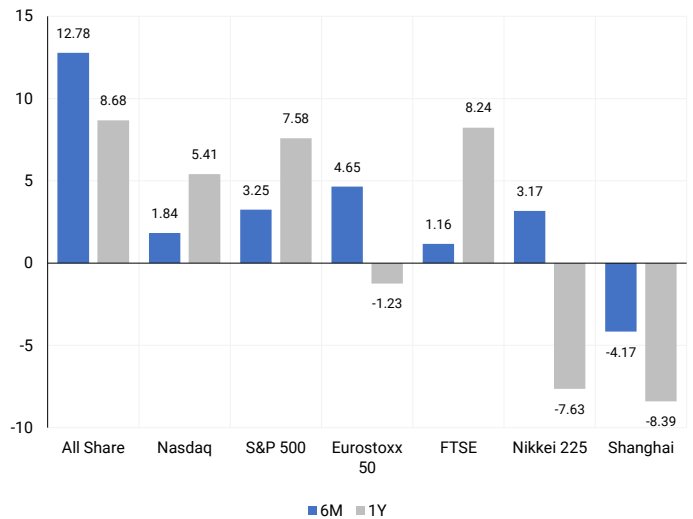
INTERNATIONAL INDICES

Normalised percentage performances - In rand terms



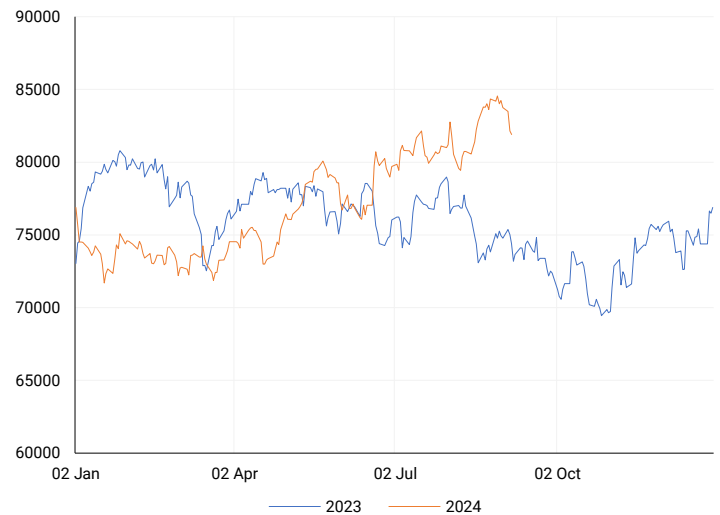
INTERNATIONAL INDICES

6-month & 1-year percentage performances



JSE ALL SHARE INDEX

2023 v 2024 to date



Last date to trade Tue, 10 September

LOCAL EQUITIES | JSE LARGE CAP COMPANIES (Cents Per Share)

COMPANY	CLOSE	PREVIOUS	1D%	5D%	1M%	YTD%
Absa Group Limited	17244	17183	0.36	-2.66	11.85	5.33
Anglo American plc	49502	49696	-0.39	-6.42	-5.14	4.55
Anglo American Plat Ltd	60090	60090	0.00	-8.86	-8.28	-37.67
Anglogold Ashanti Ltd	51214	51403	-0.37	-1.96	1.86	44.91
Anheuser-Busch InBev SA NV	111969	110598	1.24	2.31	-2.88	-6.70
BHP Group Limited	46785	46710	0.16	-3.76	-4.18	-26.14
BID Corporation Ltd	45300	45154	0.32	2.95	3.56	6.18
British American Tob plc	67756	67580	0.26	2.93	3.88	25.12
Compagnie Fin Richemont	261800	280112	-6.54	-7.01	-3.04	1.96
Capitec Bank Hldgs Ltd	289647	289000	0.22	-0.65	2.89	42.94
Discovery Ltd	14916	15062	-0.97	-3.01	7.31	3.81
Firststrand Ltd	8522	8447	0.89	-1.25	6.56	15.93
Gold Fields Ltd	24372	24791	-1.69	-3.18	-19.61	-12.26
Glencore plc	8930	8999	-0.77	-5.06	-5.18	-20.02
Impala Platinum Hlgs Ltd	7522	7802	-3.59	-10.98	-14.62	-17.59
Kumba Iron Ore Ltd	32500	32447	0.16	-10.47	-14.89	-47.14
Mondi plc	33680	34139	-1.34	-2.42	-0.70	-7.22
MTN Group Ltd	8758	8610	1.72	-6.56	16.56	-24.17
Naspers Ltd -N-	360000	364225	-1.16	0.09	5.43	15.09
Prosus N.V.	65912	66272	-0.54	1.70	5.88	17.62
South32 Limited	3584	3605	-0.58	-2.50	0.67	-15.05
Standard Bank Group Ltd	23845	23509	1.43	-1.38	9.14	14.58
Shoprite Holdings Ltd	29750	29500	0.85	-3.41	0.86	8.16
Sanlam Limited	8484	8507	-0.27	-1.69	8.16	16.54
Sasol Limited	12866	12747	0.93	-9.81	-3.97	-30.56
Sibanye Stillwater Ltd	1620	1598	1.38	-10.89	-16.75	-34.94
Vodacom Group Ltd	11005	11017	-0.11	-1.12	12.01	3.82

SOUTH AFRICAN MARKET SUMMARY

SELECTED ITEMS

On the stock market, the Top-40 index closed 0.37% lower. Domestically, a survey showed that South African private sector activity increased in August, with firms seeing higher new order volumes for the first time since April last year. Business confidence in South Africa also improved in the third quarter, thanks to optimism about the business climate following the formation of a coalition government and stable electricity supply. Cashbuild Limited, a leading building materials retailer, reported a 5% revenue increase to R11.2 billion for the year ending June 30, 2024, despite a 22% drop in headline earnings per share.

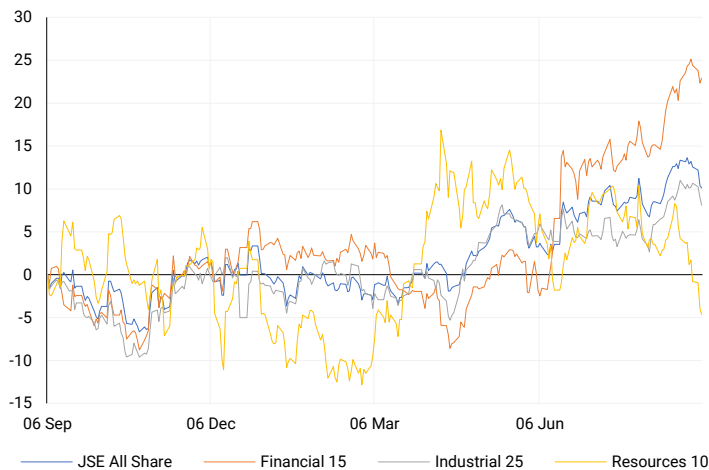
JSE ALL SHARE

One-year



LOCAL INDICES

Normalised percentage performances



EXPECTED COMPANY REPORTING SCHEDULE

COMPANY	CODE	RELEASE	DATE
Sanlam	SLM	Interim	5 Sep '24
Bell Equipment	BEL	Interim	9 Sep '24
Truworths	TRU	Final	12 Sep '24
Sibanye Stillwater	SSW	Interim	12 Sep '24
Oursurance	OUT	Final	16 Sep '24

BANK AND OTHER SELECTE PREFERENCE SHARES

COMPANY	CODE	CLOSE	CLEAN YIELD	NEXT LDT (Est.)
Investec Limited	INPR	8825	11.24	Thu, 06 Jun '24
Standard Bank	SBPP	8804	11.15	Thu, 05 Sep '24
Absa	ABSP	82750	11.48	Thu, 12 Sep '24
Capitec	CPIP	10100	9.69	Thu, 19 Sep '24
Steinhoff	SHFF	9734	10.47	Thu, 17 Oct '24
Grindrod	GNDP	9100	12.22	Thu, 19 Sep '24
Netcare	NTCP	8190	11.82	Thu, 31 Oct '24
Discovery	DSBP	9699	11.91	Thu, 19 Sep '24
Invicta	IVTP	---	13.41	Thu, 27 Jun '24

LOCAL SENS ANNOUNCEMENTS

SELECTED RELEASE

CASHBUILD LIMITED – Annual Results

For the year ending June 30, 2024, the company reported a revenue increase of 5% to R11.2 billion. However, headline earnings per share dropped by 22% to 947.2 cents, and the net asset value per share decreased by 5% to 7,667 cents. The final dividend declared is 236 cents, which is a 29% reduction.

CSB | -2.17% OPEN | 16350c HIGH | 16351c LOW | 16000c CLOSE | 16000c TIME | 07:10

THE FOSCHINI GROUP LIMITED – Trading Update

For the 21 weeks ending August 24, 2024, the group's gross margin increased by over 100 basis points, despite a 3.5% decline in sales, with improvements across all regions. TFG Africa saw a 200 basis point rise in gross margin, despite a 1% drop in sales, leading to a record gross profit of approximately R5.9 billion, up 4% from the previous period. Online sales grew by 7.8%, now making up 10.8% of total sales, driven largely by a 42.7% increase in South Africa via the Bash platform. Cash sales now account for 73% of TFG Africa's sales and 81.2% of the group's total. TFG London's gross margin increased by 150 basis points, despite a 12.4% sales decline, while TFG Australia experienced a 3.9% sales drop but still improved its gross margin by 50 basis points.

TFG | -2.27% OPEN | 14344c HIGH | 14364c LOW | 13742c CLOSE | 14000c TIME | 12:50

WOOLWORTHS HOLDINGS LIMITED – Audited Group Results

For the financial year, the group's turnover from continuing operations increased by 4.0% to R75.2 billion, while total group turnover, which includes an extra week, fell by 10.7% to R76.5 billion. Adjusted profit before tax decreased by 18.3% for continuing operations and by 29.3% for the total group. Profit before tax dropped by 34.6% for continuing operations and by 45.6% for the total group. Adjusted diluted headline earnings per share fell by 12.2% to 375.4 cents for continuing operations and by 23.8% to 387.2 cents for the total group. Net borrowings, excluding lease liabilities, rose to R5.6 billion from R2.5 billion the previous year. The total dividend per share was reduced by 15.2% to 265.5 cents, and the return on capital employed declined to 18.7% from 25.2% in 2023.

WHL | -2.47% OPEN | 6125c HIGH | 6210c LOW | 5876c CLOSE | 6112c TIME | 07:05

LOCAL EQUITIES | JSE MID CAP COMPANIES (Cents Per Share)

COMPANY	CODE	CLOSE	PREVIOUS	1D%	1M%	YTD%
Aspen Pharmacare Hldgs Ltd	APN	20187	20600	-2.00	-16.89	-0.80
African Rainbow Min Ltd	ARI	16548	16730	-1.09	-20.24	-17.26
AVI Ltd	AVI	10139	9927	2.14	4.44	23.54
Barloworld Ltd	BAW	9363	9228	1.46	2.90	18.52
Bidvest Ltd	BVT	27997	28257	-0.92	4.63	10.97
Bytes Technology Grp PLC	BYI	11023	10790	2.16	-1.58	-23.03
Capital&Counties Prop plc	CCO	3472	3452	0.58	1.37	6.83
Clicks Group Ltd	CLS	36674	36919	-0.66	4.11	12.60
Dis-Chem Pharmacies Ltd	DCP	3515	3490	0.72	-1.24	14.53
Exxaro Resources Ltd	EXX	15400	15300	0.65	-17.92	-24.69
Fortress Real Est INV B	FFB	1943	1910	1.73	15.17	35.31
Growthpoint Prop Ltd	GRT	1391	1387	0.29	11.19	19.09
Harmony GM Co Ltd	HAR	16575	16669	-0.56	-2.97	38.60
Hammerson plc	HMN	675	665	1.50	0.00	-0.74
Investec Ltd	INL	13417	13413	0.03	-1.75	6.83
Investec plc	INP	13562	13495	0.50	-1.00	7.68
Italtile Ltd	ITE	1249	1200	4.08	4.08	11.52
Life Healthc Grp Hldgs Ltd	LHC	1430	1408	1.56	7.92	-22.16
MultiChoice Group Ltd	MCG	10834	11080	-2.22	-0.40	33.72
Montauk Renewables Inc	MKR	8888	8500	4.56	-19.57	-48.33
Mr Price Group Ltd	MRP	23297	23562	-1.12	8.37	48.57
Momentum Met Hldgs Ltd	MTM	2778	2736	1.54	4.71	26.91
Ninety One Plc	N91	3712	3800	-2.32	-3.51	-13.91
Nedbank Group Ltd	NED	28905	29325	-1.43	5.11	33.68
Northam Platinum Hldgs Ltd	NPH	9500	9800	-3.06	-30.04	-32.35
NEPI Rockcastle N.V.	NRP	14619	14600	0.13	7.25	15.67
Netcare Limited	NTC	1332	1344	-0.89	2.38	-6.46
Ninety One Limited	NY1	3700	3792	-2.43	-2.55	-13.89
Old Mutual Limited	OMU	1280	1252	2.24	7.38	-1.99
OUTsurace Group Ltd	OUT	4920	4815	2.18	4.68	16.59
Pick n Pay Stores Ltd	PIK	2330	2368	-1.60	3.14	0.13
Pepkor Holdings Ltd	PPH	2127	2129	-0.09	5.19	8.35
Quilter Plc	QLT	3179	3160	0.60	3.89	30.93
Redefine Properties Ltd	RDF	470	470	0.00	10.33	22.08
Remgro Ltd	REM	14375	14293	0.57	7.99	-11.53
Resilient REIT Limited	RES	5568	5728	-2.79	11.85	25.72
Reinet Investments S.C.A	RNI	47600	47754	-0.32	-0.86	2.10
Sappi Ltd	SAP	4411	4427	-0.36	-10.13	-0.20
Santam Limited	SNT	35171	34629	1.57	11.34	22.73
The Spar Group Ltd	SPP	11695	12550	-6.81	-4.97	-0.81
Sirius Real Estate Ltd	SRE	2252	2245	0.31	2.09	1.67
Tiger Brands Ltd	TBS	23300	22879	1.84	5.45	15.75
Transaction Capital Ltd	TCP	270	265	1.89	-3.57	-66.17
The Foschini Group Limited	TFG	14000	14325	-2.27	4.96	26.17
Thungela Resources Ltd	TGA	10860	11171	-2.78	-11.06	-29.39
Telkom SA SOC Ltd	TKG	2653	2730	-2.82	14.45	-10.79
Truworths Int Ltd	TRU	9498	9384	1.21	5.53	27.75
Woolworths Holdings Ltd	WHL	6112	6267	-2.47	5.60	-15.35
Zeda Limited	ZZD	1312	1319	-0.53	6.67	2.90

LOCAL EQUITIES | JSE SMALL CAP COMPANIES (Cents Per Share)

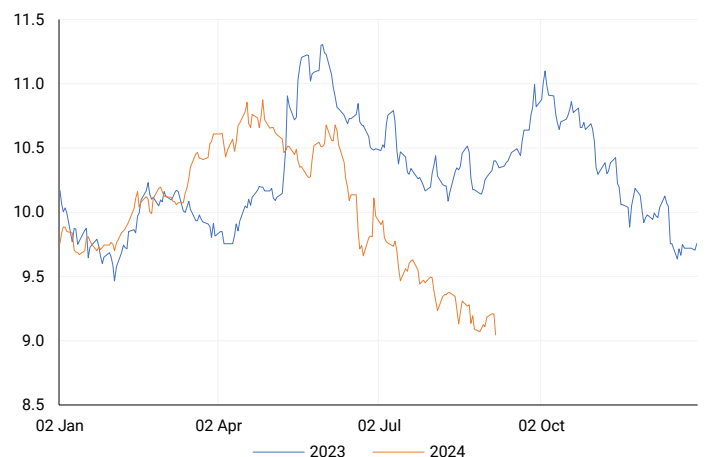
COMPANY	CODE	CLOSE	PREVIOUS	1D%	1M%	YTD%
ArcelorMittal SA Limited	ACL	128	129	-0.78	-1.54	-21.95
ADVTECH Ltd	ADH	3201	3232	-0.96	9.55	30.44
Altron Limited A	AEL	1745	1660	5.12	2.65	70.24
AECI Limited	AFE	10397	10360	0.36	-0.04	-5.21
Alexander Forbes Grp Hldgs	AFH	671	665	0.90	2.13	1.67
Afrimat Limited	AFT	6310	6485	-2.70	-6.60	0.16
African Rainbow Cap Inv	AIL	640	648	-1.23	-6.84	30.88
Adcock Ingram Hldgs Ltd	AIP	6586	6576	0.15	13.55	9.58
Astral Foods Ltd	ARL	17484	17392	0.53	4.51	19.29
Attacq Limited	ATT	1147	1142	0.44	5.91	24.40
Brait PLC	BAT	104	104	0.00	15.56	-42.86
Blue Label Telecoms Ltd	BLU	476	486	-2.06	11.48	22.68
Burstone Group	BTN	869	866	0.35	11.13	8.63
Coronation Fund Mngrs Ld	CML	3858	3916	-1.48	3.60	23.81
Curro Holdings Limited	COH	1360	1305	4.21	14.29	16.74
Cashbuild Ltd	CSB	16000	16355	-2.17	-3.03	-4.15
DRD Gold Ltd	DRD	1420	1445	-1.73	-20.27	-9.96
Datatec Ltd	DTC	3674	3570	2.91	5.00	-9.28
Emira Property Fund Ltd	EMI	1060	1051	0.86	-3.64	23.98
Equites Prop Fund Ltd	EQU	1319	1313	0.46	-0.45	-5.45
Famous Brands Ltd	FBR	5639	5759	-2.08	5.42	-2.66
Fairvest Limited B	FTB	442	440	0.45	6.76	28.49
Grindrod Ltd	GND	1458	1430	1.96	-5.20	27.23
Hosken Cons Inv Ltd	HCI	18400	18423	-0.12	1.41	-9.18
Hudaco Industries Ltd	HDC	18424	18540	-0.63	1.79	14.70
Hyprop Inv Ltd	HYP	3802	3800	0.05	18.59	22.21
JSE Ltd	JSE	11372	11250	1.08	6.93	23.02
KAP Industrial Hldgs Ltd	KAP	358	342	4.68	16.99	36.64
Karoo Ltd	KRO	66950	66400	0.83	-0.67	40.95
PSG Konsult Limited	KST	1740	1725	0.87	6.29	13.36
Libstar Holdings Ltd	LBR	419	420	-0.24	4.49	19.71
Lighthouse Properties plc	LTE	780	810	-3.70	-4.65	6.12
Industrials REIT Limited	MLI	1.7	1.6	6.25	6.25	142.86
MAS P.L.C	MSP	1705	1740	-2.01	-8.58	-1.50
Metair Investments Ltd	MTA	1499	1452	3.24	9.18	-15.55
Motus Holdings Ltd	MTH	11795	11700	0.81	14.77	16.21
Murray & Roberts Hldgs	MUR	264	281	-6.05	-13.73	77.18
Oceana Group Ltd	OCE	6649	6700	-0.76	-5.01	-5.91
Omnia Holdings Ltd	OMN	6290	6323	-0.52	-3.08	-3.78
Pan African Resource plc	PAN	688	684	0.58	-0.29	68.22
PPC Limited	PPC	408	408	0.00	7.94	2.26
Raubex Group Ltd	RBX	5118	4951	3.37	13.73	84.63
RFG Holdings Limited	RFG	1570	1585	-0.95	1.62	16.30
Reunert Ltd	RLO	7672	7642	0.39	6.94	27.99
SA Corp Real Estate Ltd	SAC	276	274	0.73	2.60	18.97
Super Group Ltd	SPG	2778	2722	2.06	-7.09	-6.62
Stor-Age Prop REIT Ltd	SSS	1418	1441	-1.60	5.98	8.58
Southern Sun LTD	SSU	675	663	1.81	11.02	28.57
Sun International Ltd	SUI	4438	4500	-1.38	18.03	8.24
Tharisa plc	THA	1850	1850	0.00	-7.50	22.44
Tsogo Sun Gaming Ltd	TSG	1173	1190	-1.43	5.68	-4.24
Vukile Property Fund Ltd	VKE	1779	1771	0.45	8.01	25.99
Wilson Bayly Hlm-Ovc Ltd	WBO	20336	20200	0.67	12.79	56.36

10-YEAR BOND YIELD | SELECTED ITEMS (Basis Point Change)

REGION	YIELD	1D	1M	1Y
United States	3.76%	-7	-3	--
United Kingdom	3.93%	-6	11	-53
Germany	2.22%	-5	5	-35
Japan	0.86%	-5	-7	--
South African 10Y	9.04%	-18	-33	-138

SOUTH AFRICAN 10-YEAR

2023 vs 2024 to date

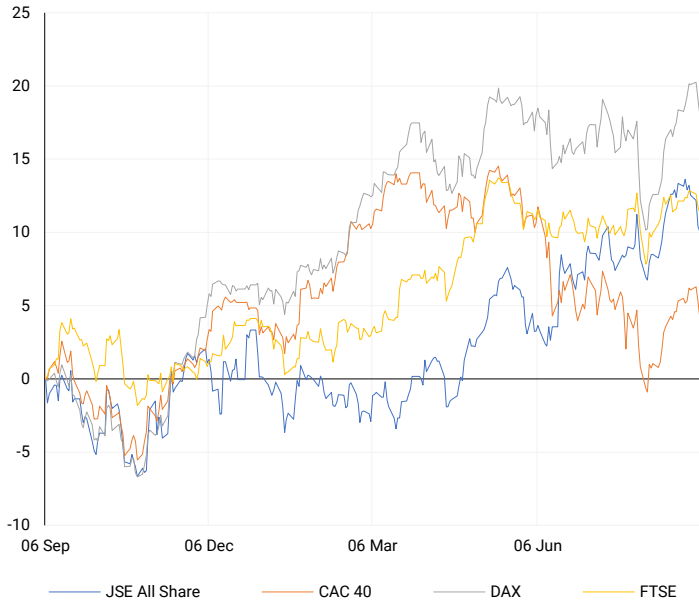


GLOBAL INTEREST RATES | SELECTED ITEMS

REGION	DATE CHANGED	CURRENT RATE
United States	Wed, 26 Jul '23	5.25%-5.50%
United Kingdom	Thu, 03 Aug '23	5.25%
European	Thu, 27 Jul '23	4.25%
SA Repo Rate	Thu, 25 May '23	8.25%
SA Prime Rate	Thu, 25 May '23	11.75%

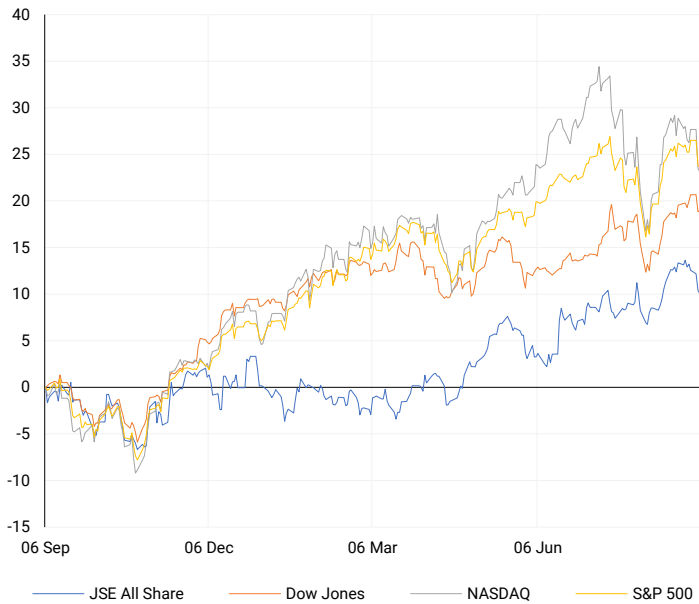
EUROPEAN INDICES

Normalised percentage performances



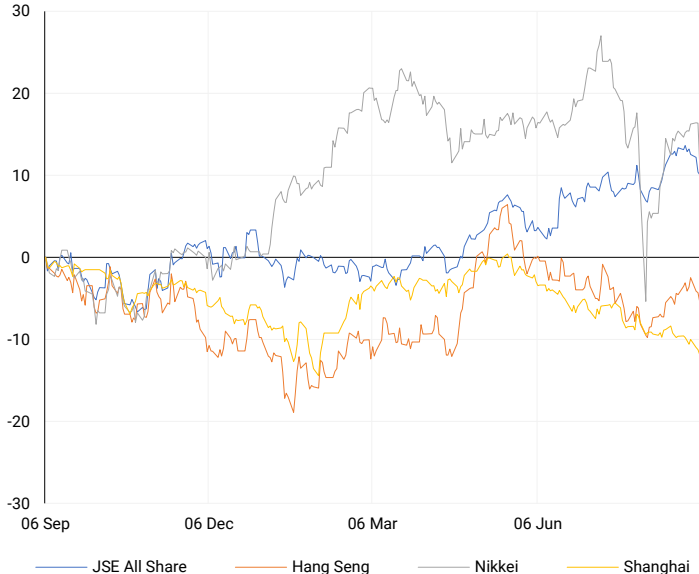
AMERICAN INDICES

Normalised percentage performances



ASIAN INDICES

Normalised percentage performances

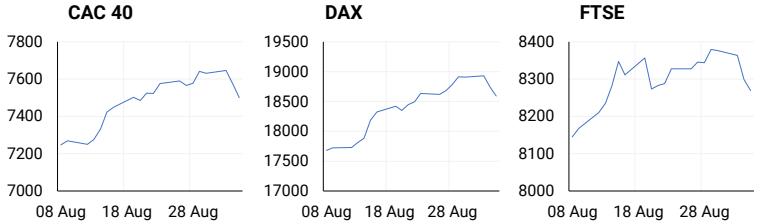


EUROPEAN MARKET SUMMARY

SELECTED ITEMS

European stocks fell sharply on Wednesday, following losses in Wall Street and Asia-Pacific markets. In the Eurozone, business activity showed mixed results: France's services sector got a boost in August from the Olympic Games, while Germany's services sector continued to slow, signalling economic weakness. The region's composite Purchasing Managers' Index (PMI) was slightly below expectations at 51.0. Producer prices in July dropped by 2.1% year-on-year, less than the anticipated 2.5% decline. Despite recent losses, European equities are still up 8.5% for the year, supported by expectations of lower borrowing costs, with the European Central Bank likely to cut rates later this month.

EUROPEAN INDICES	CLOSE	PREVIOUS	1D%	5D%	1M%	YTD%
CAC 40	7500.97	7575.10	-0.98	-1.01	3.44	-0.56
DAX 30	18591.85	18747.11	-0.83	-1.01	5.27	10.99
Eurostoxx 50	4852.30	4910.90	-1.19	-1.26	4.65	7.31
FTSE	8269.60	8298.46	-0.35	-0.89	1.16	6.94



AMERICAN MARKET SUMMARY

SELECTED ITEMS

U.S. stocks ended slightly lower in volatile trading on Wednesday after labour market data and comments from a Federal Reserve official increased the likelihood of an interest rate cut. The Labor Department reported that job openings fell to a 3.5-year low in July, signalling a cooling labour market, which could support the Fed's decision to cut rates at its upcoming meeting. While the S&P 500 and Nasdaq finished lower, the Dow edged up slightly.

AMERICAN INDICES	CLOSE	PREVIOUS	1D%	5D%	1M%	YTD%
Dow Jones	40974.97	40936.93	0.09	-0.28	3.11	8.72
Nasdaq	17084.30	17136.30	-0.30	-2.69	1.84	13.81
S&P 500	5520.07	5528.93	-0.16	-1.29	3.25	15.73
US VIX	21.32	20.72	2.90	24.61	-8.85	71.24

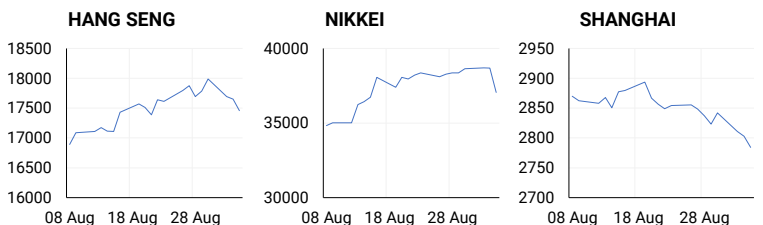


ASIAN MARKET SUMMARY

SELECTED ITEMS

Asia-Pacific markets mostly rebounded this morning, with the exception of Japan's Nikkei 225, which fell slightly. In Japan, monthly cash earnings rose 3.6% year-on-year, though this was softer than June's 4.5% increase. Real wages climbed 0.4%, marking a second consecutive month of growth. This strong wage data could give the Bank of Japan room to raise interest rates, potentially impacting equities. Bank of Japan board member Hajime Takata hinted at the need for rate hikes if corporate spending and wages continue to rise.

ASIAN INDICES	CLOSE	PREVIOUS	1D%	5D%	1M%	YTD%
Hang Seng	17457.34	17651.49	-1.10	-1.33	3.02	2.40
Nikkei 225	37047.61	38686.31	-4.24	-3.45	3.17	10.71
Shanghai	2784.28	2802.98	-0.67	-1.87	-4.17	-6.41



COMMODITIES MARKET SUMMARY

SELECTED ITEMS

Gold prices remained stable this morning as investors stayed cautious ahead of U.S. payroll data, which could offer more insights into the scale of a potential interest rate cut this month. Meanwhile, oil prices tried to stabilize after an overnight sell-off, with traders weighing weak demand against the possibility of a delay in additional supply expected to enter the market next month.

COMMODITY	LAST	CLOSE	% CHG	1D%	5D%	YTD%
Brent Crude	72.81	72.73	0.11	-1.26	-7.30	-5.64
Gold	2494.96	2495.64	-0.03	0.11	-0.36	20.97
Palladium	935.99	937.85	-0.20	-1.05	-1.15	-14.53
Platinum	911.15	909.70	0.16	0.15	-2.71	-7.86
Silver	28.22	28.28	-0.21	0.78	-2.98	18.88

BRENT CRUDE

One-year



PLATINUM

One-year



GOLD

One-year



CURRENCY PAIR	LAST	CLOSE	% CHG	1D%	5D%	YTD%
USDZAR	17.88	17.87	0.05	-0.63	0.25	-2.50
GBPZAR	23.50	23.48	0.09	-0.41	-0.18	0.79
EURZAR	19.81	19.80	0.03	-0.29	-0.13	-1.93
AUDZAR	12.02	12.01	0.04	-0.53	-0.69	-3.57
EURUSD	1.11	1.11	-0.06	0.35	-0.34	0.41
USDJPY	143.79	143.74	0.03	-1.20	-0.59	1.91
GBPUSD	1.31	1.32	-0.03	0.28	-0.31	3.28
USDCHF	0.85	0.85	0.03	-0.47	0.51	0.59

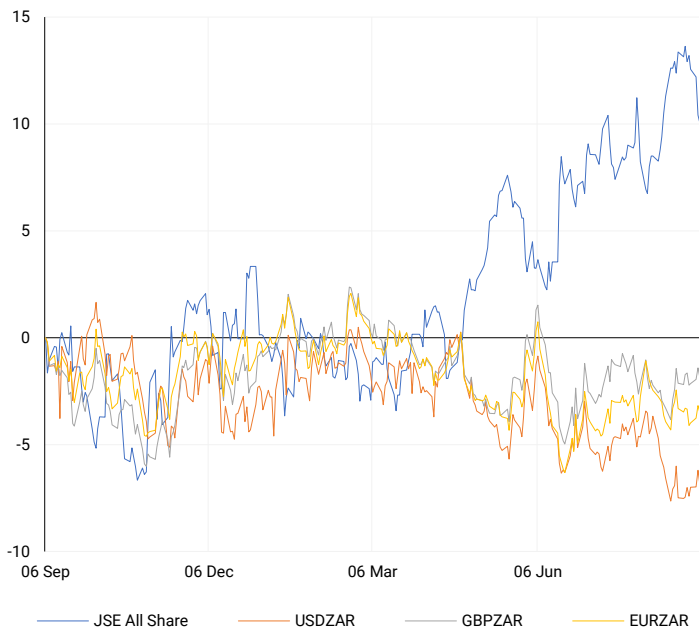
CURRENCY MARKET SUMMARY

SELECTED ITEMS

The South African rand strengthened on Wednesday, benefiting from a weaker U.S. dollar following data that revealed a softening U.S. labour market. This morning, the dollar continued to dip as traders increased bets on a larger-than-expected rate cut by the Federal Reserve later this month. The Japanese yen outperformed, driven by safe-haven demand amid renewed concerns about the U.S. economy's growth prospects.

CURRENCY PAIRS vs JSE ALL SHARE

Normalised percentage performances



USDZAR

One-year



EURUSD

One-year



SOURCES | JSE, IRESS, MONEYWEB, CNBC, BBC, CNN

Disclaimer: This note is prepared for Sanlam Private Wealth (Pty) Ltd, by K2013143132 (Pty) Ltd trading as ThompsonGreen. ThompsonGreen is an independent company contracted to Sanlam Private Wealth (Pty) Ltd. The views expressed in this note are those of ThompsonGreen and/or its analysts and not necessarily the views of Sanlam Private Wealth (Pty) Ltd, Sanlam or any officer or agent thereof. K2013143132 (Pty) Ltd trading as ThompsonGreen is a research house and not a registered broker, financial adviser or financial service provider. Our editors and customer services teams also do not give personal investment advice. The information in this document is general advice only and may not be appropriate to your particular investment objectives, financial situation or particular needs. Before investing, or if you are in any doubt about your personal situation, you should seek professional advice from a stockbroker or independent financial adviser authorised by the Financial Sector Conduct Authority.