

GLOBAL OVERVIEW | SELECTED INDICES

SOUTH AFRICAN INDICES	CLOSE	PREVIOUS	1D%	5D%	1M%	YTD%
All Share	82146.83	81915.38	0.28	-2.48	3.23	6.83
Top 40	74721.80	74533.58	0.25	-2.69	2.93	6.00
Financial 15	20642.03	20682.12	-0.19	-1.98	7.86	15.49
Industrial 25	112541.10	111647.35	0.80	-1.17	5.37	8.51
Resource 10	53827.93	53925.10	-0.18	-6.40	-7.67	-6.44
Mid Cap	84992.37	84957.42	0.04	-4.14	1.51	5.69
Small Cap	85298.90	84836.87	0.54	-0.52	7.28	17.66
Banks	13013.93	13085.00	-0.54	-2.36	7.52	18.87
Retailers	7152.36	7132.72	0.28	-3.99	8.40	14.74
Property (J253) - TR	2325.81	2306.25	0.85	0.93	9.37	24.79

AMERICAN INDICES	CLOSE	PREVIOUS	1D%	5D%	1M%	YTD%
Dow Jones	40755.75	40974.97	-0.54	-1.40	5.30	8.14
Nasdaq	17127.66	17084.30	0.25	-2.22	5.73	14.10
S&P 500	5503.41	5520.07	-0.30	-1.58	6.11	15.38
US VIX	19.90	21.32	-6.66	27.16	-48.41	59.84

EUROPEAN INDICES	CLOSE	PREVIOUS	1D%	5D%	1M%	YTD%
CAC 40	7431.96	7500.97	-0.92	-2.74	3.96	-1.47
DAX 30	18576.50	18591.85	-0.08	-1.78	7.14	10.89
Eurostoxx 50	4825.60	4852.30	-0.55	-2.72	5.62	6.72
FTSE	8241.71	8269.60	-0.34	-1.65	2.92	6.58

ASIAN INDICES	CLOSE	PREVIOUS	1D%	5D%	1M%	YTD%
Hang Seng	17444.30	17457.34	-0.07	-1.92	4.47	2.33
Nikkei 225	36657.09	37047.61	-1.05	-4.45	16.53	9.54
Shanghai	2788.31	2784.28	0.14	-1.23	-2.53	-6.27

EARLY MORNING MARKETS	LAST	CLOSE	% CHG	1D%	5D%	YTD%
TENCENT	373.40	373.40	0.00	0.16	-1.11	28.67
BHP AUS	3860.00	3891.00	-0.80	0.70	-4.00	-22.81

NOTE : 5D% and 1M% are rolling percentage moves

INTERNATIONAL ECONOMIC CALENDAR | SELECTED EVENTS

TIME	AREA	TODAY'S EVENTS & RELEASES	PERIOD	EXP.	PREV.
8:00	ZA	Foreign Exchange Reserves	Aug	\$62.0B	\$62.3B
14:30	US	Non Farm Payrolls	Aug	120.0K	114.0K
14:30	US	Unemployment Rate	Aug	4.30%	4.30%
17:00	US	Fed Waller Speech	---	---	---

TIME	AREA	PREVIOUS SESSION'S RELEASES	PERIOD	EXP.	ACT.
11:00	ZA	Current Account	Q2	-R150.0B	-R64.6B
14:15	US	ADP Employment Change	Aug	115.0K	99.0K
14:30	US	Unemployment Claims	Aug	227.0K	227.0K
16:00	US	ISM Services PMI	Aug	51.20	51.50

JSE ALL SHARE | BEST AND WORST ONE-DAY PERFORMERS

BEST ONE-DAY % PERFORMERS	CODE	CLOSE	1D%	5D%	YTD%
MTN Group Ltd	MTN	9103	3.94	-1.65	-21.19
Sappi Ltd	SAP	4556	3.29	-0.76	3.08
Telkom SA SOC Ltd	TKG	2740	3.28	-3.08	-7.87
Equites Prop Fund Ltd	EQU	1361	3.18	0.07	-2.44
Tsogo Sun Limited	TSG	1210	3.15	2.28	-1.22
Woolworths Holdings Ltd	WHL	6298	3.04	-3.98	-12.77

WORST ONE-DAY % PERFORMERS	CODE	CLOSE	1D%	5D%	YTD%
Montauk Renewables Inc	MKR	8108	-8.78	-1.12	-52.86
PPC Limited	PPC	392	-3.92	-5.08	-1.75
Brait PLC	BAT	100	-3.85	-10.71	-45.05
Harmony GM Co Ltd	HAR	15990	-3.53	-14.59	33.71
Tharisa plc	THA	1785	-3.51	-5.66	18.13

DIVIDEND DATA

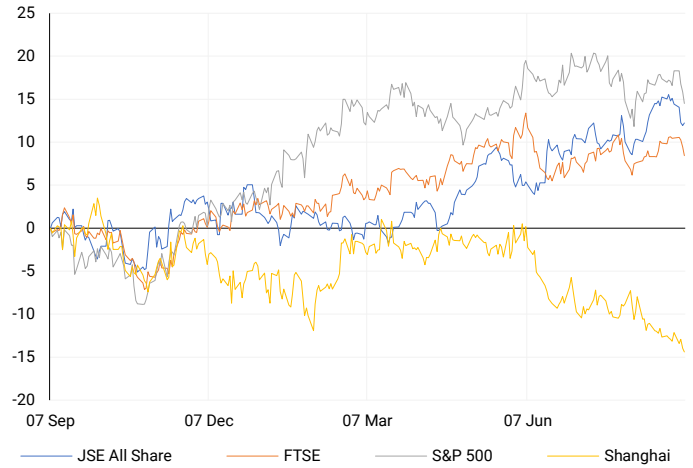
COMPANY	CODE	EXPECTED DIVIDEND	COMPANY	CODE	EXPECTED DIVIDEND
Absa Group	ABG	685 ZARc	DRDGOLD	DRD	20 ZARc
Spur Corporation	SUR	118 ZARc	Standard Bank	SBK	744 ZARc
Sabvest Capital	SBP	35 ZARc	Gold Fields	GFI	300 ZARc
Italtile	ITE	22 ZARc	ADVTECH	ADH	38 ZARc
Coronation Fund Managers	CML	153 ZARc	Reinet Investments SCA	RNI	35 EURc

SOURCES | JSE, IRESS, MONEYWEB, CNBC, BBC, CNN

PLEASE SEE THE BOTTOM OF THE LAST PAGE FOR THE FULL DISCLAIMER

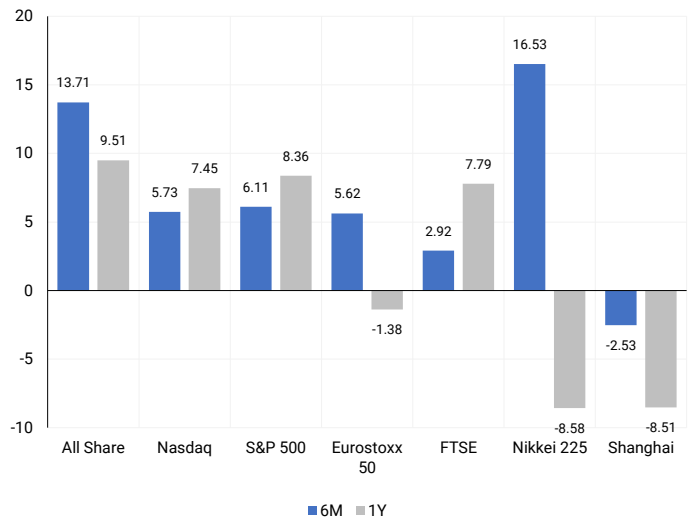
INTERNATIONAL INDICES

Normalised percentage performances - In rand terms



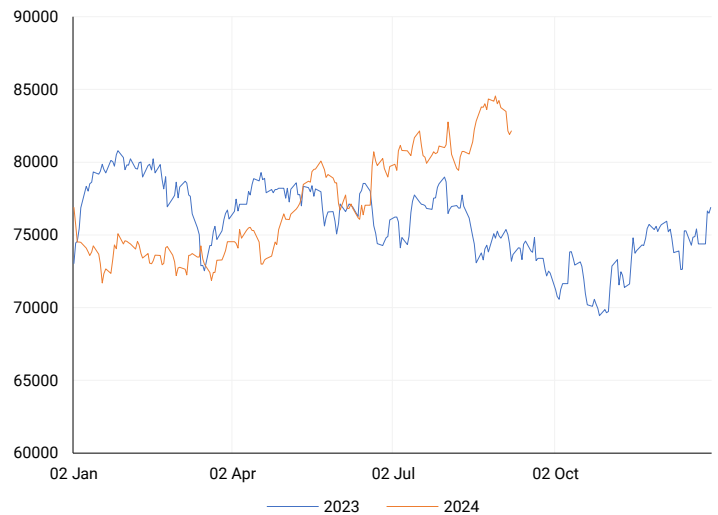
INTERNATIONAL INDICES

6-month & 1-year percentage performances



JSE ALL SHARE INDEX

2023 v 2024 to date



Last date to trade Tue, 10 September

LOCAL EQUITIES | JSE LARGE CAP COMPANIES (Cents Per Share)

COMPANY	CLOSE	PREVIOUS	1D%	5D%	1M%	YTD%
Absa Group Limited	17284	17244	0.23	-2.31	16.55	5.58
Anglo American plc	49436	49502	-0.13	-5.84	-4.59	4.41
Anglo American Plat Ltd	59888	60090	-0.34	-8.57	-6.38	-37.88
Anglogold Ashanti Ltd	51645	51214	0.84	-3.81	5.40	46.13
Anheuser-Busch InBev SA NV	113066	111969	0.98	3.64	0.06	-5.79
BHP Group Limited	46645	46785	-0.30	-4.21	-3.90	-26.36
BID Corporation Ltd	45404	45300	0.23	-0.46	4.95	6.42
British American Tob plc	67929	67756	0.26	3.47	7.34	25.44
Compagnie Fin Richemont	258484	261800	-1.27	-7.52	-4.08	0.67
Capitec Bank Hldgs Ltd	290706	289647	0.37	-1.43	5.18	43.46
Discovery Ltd	15053	14916	0.92	-2.17	9.75	4.77
Firststrand Ltd	8508	8522	-0.16	-1.89	8.08	15.74
Gold Fields Ltd	24400	24372	0.11	-3.56	-18.99	-12.16
Glencore plc	8900	8930	-0.34	-4.78	-3.26	-20.29
Impala Platinum Hlgs Ltd	7575	7522	0.70	-8.04	-8.75	-17.00
Kumba Iron Ore Ltd	32182	32500	-0.98	-12.10	-16.10	-47.65
Mondi plc	33700	33680	0.06	-2.29	1.19	-7.16
MTN Group Ltd	9103	8758	3.94	-1.65	22.01	-21.19
Naspers Ltd -N-	364149	360000	1.15	1.33	5.62	16.42
Prosus N.V.	66043	65912	0.20	2.14	5.27	17.85
South32 Limited	3581	3584	-0.08	-3.35	3.44	-15.12
Standard Bank Group Ltd	23492	23845	-1.48	-3.15	7.94	12.89
Shoprite Holdings Ltd	30241	29750	1.65	-2.69	4.44	9.95
Sanlam Limited	8544	8484	0.71	-4.06	9.93	17.36
Sasol Limited	12935	12866	0.54	-9.61	-2.74	-30.19
Sibanye Stillwater Ltd	1610	1620	-0.62	-11.93	-13.58	-35.34
Vodacom Group Ltd	11110	11005	0.95	-0.36	14.28	4.81

SOUTH AFRICAN MARKET SUMMARY

SELECTED ITEMS

The JSE saw a slight gain on Thursday, supported by positive domestic data showing South Africa's current account deficit narrowed to 0.9% of GDP in the second quarter from 1.5% in the first quarter. Attention is shifting to Friday's release of gold and forex reserves data for August. Sanlam benefited from strong life insurance new business volumes, with total new business growing 7% and headline earnings per share rising by 40%. Meanwhile, Harmony Gold Mining expects higher costs this year despite last year's profit boost from increased output and prices.

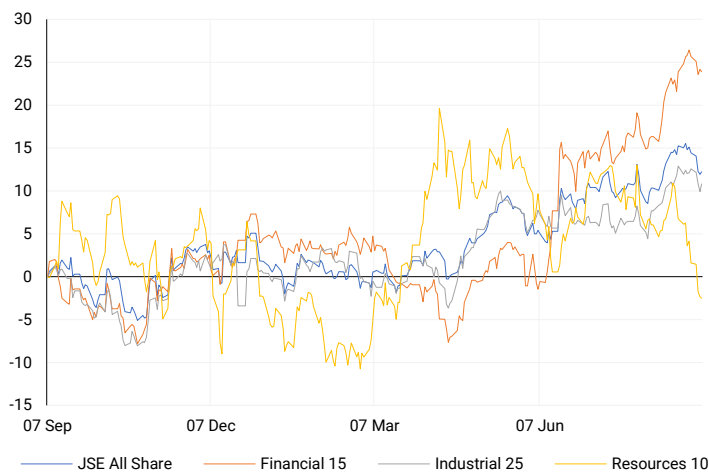
JSE ALL SHARE

One-year



LOCAL INDICES

Normalised percentage performances



LOCAL SENS ANNOUNCEMENTS

SELECTED RELEASE

HARMONY GOLD MINING COMPANY LIMITED – Results

The company achieved a lost time injury frequency rate of 5.53 per million hours worked, maintaining a rate below 6 for the third consecutive year. Headline earnings per share rose by 132% to 1 852 SA cents (99 US cents), while earnings per share (EPS) increased by 78% to 1 386 SA cents (74 US cents). Operating free cash flow reached a record R12.7 billion (US\$681 million) due to higher gold grades and prices. Total gold production increased by 6%, with notable improvements at Mponeng (17%), Mine Waste Solutions (34%), and Hidden Valley (17%). Group revenue grew by 25%, and the balance sheet strengthened with a net cash position of R2.9 billion (US\$159 million). Additionally, the company expanded its renewable energy program and declared a final dividend of 94 SA cents per share (5.2 US cents).

HAR | -3.53% OPEN | 16100c HIGH | 16170c LOW | 14862c CLOSE | 15990c TIME | 07:05

SANLAM LIMITED – Interim Results

For the six months ending June 30, 2024, the company saw notable financial improvements. The net result from financial services rose by 14% to R7.06 billion, while cash net results from financial services increased by 15% to R7.18 billion. Net operational earnings grew by 8% to R8.09 billion, and headline earnings surged by 43% to R9.84 billion. Earnings per share (EPS) metrics showed strong growth, with net result from financial services per share up 19%, headline earnings per share up 40%, and basic profit per share up 23%.

SLM | 0.71% OPEN | 8550c HIGH | 8696c LOW | 8455c CLOSE | 8544c TIME | 09:00

OUTSURANCE GROUP LIMITED – Trading Statement

OGL has provided guidance for the year ended June 30, 2024, regarding its expected normalized earnings per share (NEPS), headline earnings per share (HEPS), and earnings per share (EPS). Based on IFRS 17 implementation, NEPS for 2023 was restated at 191.9 cents, with an expected increase of 15-25%, bringing it to 220.7-239.9 cents. HEPS, restated at 193.4 cents, is expected to rise 14-24%, reaching 220.5-239.8 cents. EPS, restated at 194.5 cents, is forecast to increase by 32-42%, reaching 256.7-276.2 cents.

OUT | -0.22% OPEN | 4899c HIGH | 4926c LOW | 4838c CLOSE | 4909c TIME | 16:30

EXPECTED COMPANY REPORTING SCHEDULE

COMPANY	CODE	RELEASE	DATE
Bell Equipment	BEL	Interim	9 Sep '24
Truworths	TRU	Final	12 Sep '24
Sibanye Stillwater	SSW	Interim	12 Sep '24
Outsurance	OUT	Final	16 Sep '24
Discovery	DSY	Final	20 Sep '24

BANK AND OTHER SELECTE PREFERENCE SHARES

COMPANY	CODE	CLOSE	CLEAN YIELD	NEXT LDT (Est.)
Investec Limited	INPR	8900	11.24	Thu, 06 Jun '24
Standard Bank	SBPP	8800	11.15	Thu, 05 Sep '24
Absa	ABSP	83790	11.48	Thu, 12 Sep '24
Capitec	CPIP	10100	9.69	Thu, 19 Sep '24
Steinhoff	SHFF	9734	10.47	Thu, 17 Oct '24
Grindrod	GNDP	9305	12.22	Thu, 19 Sep '24
Netcare	NTCP	8200	11.82	Thu, 31 Oct '24
Discovery	DSBP	9698	11.91	Thu, 19 Sep '24
Invicta	IVTP	---	13.41	Thu, 27 Jun '24

LOCAL EQUITIES | JSE MID CAP COMPANIES (Cents Per Share)

COMPANY	CODE	CLOSE	PREVIOUS	1D%	1M%	YTD%
Aspen Pharmacare Hldgs Ltd	APN	20032	20187	-0.77	-14.92	-1.56
African Rainbow Min Ltd	ARI	16200	16548	-2.10	-19.98	-19.00
AVI Ltd	AVI	10227	10139	0.87	6.43	24.61
Barloworld Ltd	BAW	9374	9363	0.12	5.56	18.66
Bidvest Ltd	BVT	28563	27997	2.02	9.75	13.21
Bytes Technology Grp PLC	BYI	10729	11023	-2.67	-5.05	-25.08
Capital&Counties Prop plc	CCO	3519	3472	1.35	5.99	8.28
Clicks Group Ltd	CLS	36735	36674	0.17	5.56	12.78
Dis-Chem Pharmacies Ltd	DCP	3563	3515	1.37	0.37	16.10
Exxaro Resources Ltd	EXX	15400	15400	0.00	-17.66	-24.69
Fortress Real Est INV B	FFB	1961	1943	0.93	15.15	36.56
Growthpoint Prop Ltd	GRT	1406	1391	1.08	12.12	20.38
Harmony GM Co Ltd	HAR	15990	16575	-3.53	-4.99	33.71
Hammerson plc	HMN	680	675	0.74	2.26	0.00
Investec Ltd	INL	13329	13417	-0.66	-0.90	6.13
Investec plc	INP	13454	13562	-0.80	-0.65	6.82
Italtile Ltd	ITE	1218	1249	-2.48	1.58	8.75
Life Healthc Grp Hldgs Ltd	LHC	1446	1430	1.12	11.15	-21.28
MultiChoice Group Ltd	MCG	10729	10834	-0.97	-0.53	32.42
Montauk Renewables Inc	MKR	8108	8888	-8.78	-22.78	-52.86
Mr Price Group Ltd	MRP	23000	23297	-1.27	8.44	46.67
Momentum Met Hldgs Ltd	MTM	2800	2778	0.79	6.63	27.91
Ninety One Plc	N91	3735	3712	0.62	-2.23	-13.38
Nedbank Group Ltd	NED	28347	28905	-1.93	6.09	31.10
Northam Platinum Hldgs Ltd	NPH	9500	9500	0.00	-28.14	-32.35
NEPI Rockcastle N.V.	NRP	14680	14619	0.42	7.24	16.16
Netcare Limited	NTC	1335	1332	0.23	3.97	-6.25
Ninety One Limited	NY1	3726	3700	0.70	-1.22	-13.29
Old Mutual Limited	OMU	1271	1280	-0.70	6.99	-2.68
OUTsurance Group Ltd	OUT	4909	4920	-0.22	4.69	16.33
Pick n Pay Stores Ltd	PIK	2353	2330	0.99	5.71	1.12
Pepkor Holdings Ltd	PPH	2135	2127	0.38	8.10	8.76
Quilter Plc	QLT	3170	3179	-0.28	5.84	30.56
Redefine Properties Ltd	RDF	473	470	0.64	12.62	22.86
Remgro Ltd	REM	14448	14375	0.51	10.71	-11.08
Resilient REIT Limited	RES	5654	5568	1.54	12.76	27.66
Reinet Investments S.C.A	RNI	48241	47600	1.35	3.28	3.47
Sappi Ltd	SAP	4556	4411	3.29	-3.92	3.08
Santam Limited	SNT	35803	35171	1.80	13.78	24.94
The Spar Group Ltd	SPP	12031	11695	2.87	0.73	2.04
Sirius Real Estate Ltd	SRE	2289	2252	1.64	3.67	3.34
Tiger Brands Ltd	TBS	23559	23300	1.11	7.55	17.04
Transaction Capital Ltd	TCP	262	270	-2.96	-6.09	-67.17
The Foschini Group Limited	TFG	13868	14000	-0.94	5.15	24.98
Thungela Resources Ltd	TGA	11053	10860	1.78	-7.89	-28.13
Telkom SA SOC Ltd	TKG	2740	2653	3.28	20.70	-7.87
Truworths Int Ltd	TRU	9445	9498	-0.56	7.55	27.03
Woolworths Holdings Ltd	WHL	6298	6112	3.04	9.11	-12.77
Zeda Limited	ZZD	1318	1312	0.46	14.11	3.37

LOCAL EQUITIES | JSE SMALL CAP COMPANIES (Cents Per Share)

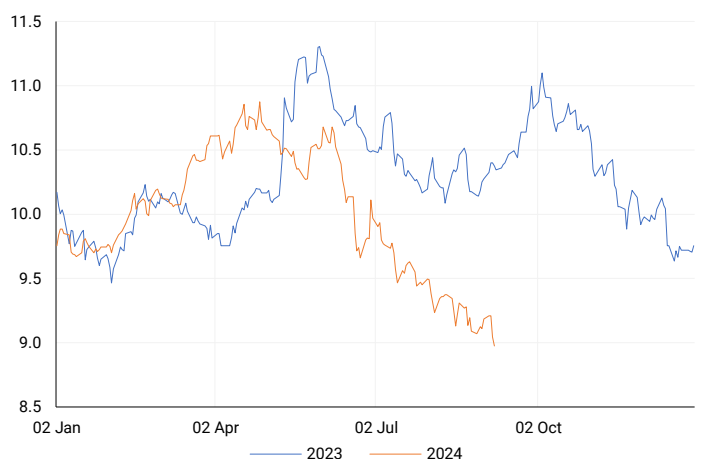
COMPANY	CODE	CLOSE	PREVIOUS	1D%	1M%	YTD%
ArcelorMittal SA Limited	ACL	128	128	0.00	7.56	-21.95
ADVTECH Ltd	ADH	3288	3201	2.72	13.18	33.99
Altron Limited A	AEL	1705	1745	-2.29	1.79	66.34
AECI Limited	AFE	10450	10397	0.51	1.78	-4.73
Alexander Forbes Grp Hldgs	AFH	680	671	1.34	3.03	3.03
Afrimat Limited	AFT	6430	6310	1.90	-3.22	2.06
African Rainbow Cap Inv	AIL	650	640	1.56	-4.13	32.92
Adcock Ingram Hldgs Ltd	AIP	6554	6586	-0.49	14.94	9.05
Astral Foods Ltd	ARL	17337	17484	-0.84	3.81	18.28
Attacq Limited	ATT	1154	1147	0.61	6.85	25.16
Brait PLC	BAT	100	104	-3.85	19.05	-45.05
Blue Label Telecoms Ltd	BLU	475	476	-0.21	10.47	22.42
Burststone Group	BTN	869	869	0.00	12.27	8.63
Coronation Fund Mngrs Ld	CML	3954	3858	2.49	8.51	26.89
Curro Holdings Limited	COH	1322	1360	-2.79	12.03	13.48
Cashbuild Ltd	CSB	16000	16000	0.00	1.91	-4.15
DRD Gold Ltd	DRD	1443	1420	1.62	-14.67	-8.50
Datatec Ltd	DTC	3666	3674	-0.22	5.95	-9.48
Emira Property Fund Ltd	EMI	1050	1060	-0.94	-2.23	22.81
Equites Prop Fund Ltd	EQU	1361	1319	3.18	3.89	-2.44
Famous Brands Ltd	FBR	5735	5639	1.70	8.54	-1.00
Fairvest Limited B	FTB	442	442	0.00	11.90	28.49
Grindrod Ltd	GND	1481	1458	1.58	-3.14	29.23
Hosken Cons Inv Ltd	HCI	18584	18400	1.00	5.74	-8.27
Hudaco Industries Ltd	HDC	18438	18424	0.08	3.93	14.79
Hyprop Inv Ltd	HYP	3865	3802	1.66	18.59	24.24
JSE Ltd	JSE	11482	11372	0.97	8.66	24.21
KAP Industrial Hldgs Ltd	KAP	350	358	-2.23	17.06	33.59
Karooooo Ltd	KRO	66120	66950	-1.24	2.97	39.20
PSG Konsult Limited	KST	1734	1740	-0.34	7.24	12.96
Libstar Holdings Ltd	LBR	404	419	-3.58	1.00	15.43
Lighthouse Properties plc	LTE	789	780	1.15	-3.55	7.35
Industrials REIT Limited	MLI	2	1.7	17.65	25.00	185.71
MAS P.L.C	MSP	1740	1705	2.05	-3.65	0.52
Metair Investments Ltd	MTA	1529	1499	2.00	18.53	-13.86
Motus Holdings Ltd	MTH	12000	11795	1.74	18.19	18.23
Murray & Roberts Hldgs	MUR	260	264	-1.52	-10.34	74.50
Oceana Group Ltd	OCE	6655	6649	0.09	-2.85	-5.83
Omnia Holdings Ltd	OMN	6335	6290	0.72	-1.54	-3.09
Pan African Resource plc	PAN	692	688	0.58	2.37	69.19
PPC Limited	PPC	392	408	-3.92	3.70	-1.75
Raubex Group Ltd	RBX	5051	5118	-1.31	14.80	82.22
RFG Holdings Limited	RFG	1555	1570	-0.96	2.24	15.19
Reunert Ltd	RLO	7660	7672	-0.16	8.10	27.79
SA Corp Real Estate Ltd	SAC	277	276	0.36	1.84	19.40
Super Group Ltd	SPG	2758	2778	-0.72	-7.42	-7.29
Stor-Age Prop REIT Ltd	SSS	1425	1418	0.49	8.45	9.11
Southern Sun LTD	SSU	673	675	-0.30	14.26	28.19
Sun International Ltd	SUI	4355	4438	-1.87	17.70	6.22
Tharisa plc	THA	1785	1850	-3.51	0.28	18.13
Tsogo Sun Gaming Ltd	TSG	1210	1173	3.15	8.72	-1.22
Vukile Property Fund Ltd	VKE	1778	1779	-0.06	7.43	25.92
Wilson Bayly Hlm-Ovc Ltd	WBO	20600	20336	1.30	15.96	58.39

10-YEAR BOND YIELD | SELECTED ITEMS (Basis Point Change)

REGION	YIELD	1D	1M	1Y
United States	3.72%	-3	-7	--
United Kingdom	3.91%	-2	5	-61
Germany	2.20%	-2	2	-40
Japan	0.86%	-1	9	--
South African 10Y	9.01%	-3	-37	-141

SOUTH AFRICAN 10-YEAR

2023 vs 2024 to date

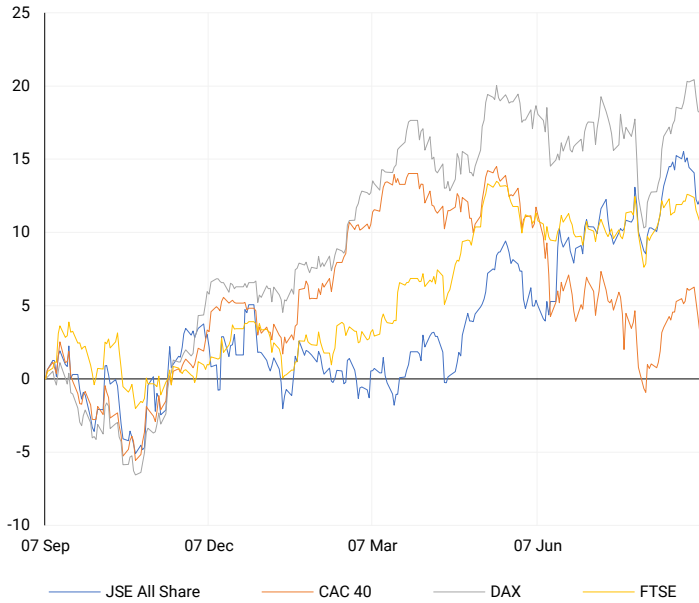


GLOBAL INTEREST RATES | SELECTED ITEMS

REGION	DATE CHANGED	CURRENT RATE
United States	Wed, 26 Jul '23	5.25%-5.50%
United Kingdom	Thu, 03 Aug '23	5.25%
European	Thu, 27 Jul '23	4.25%
SA Repo Rate	Thu, 25 May '23	8.25%
SA Prime Rate	Thu, 25 May '23	11.75%

EUROPEAN INDICES

Normalised percentage performances



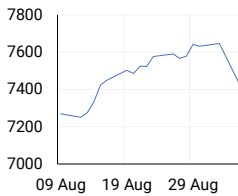
EUROPEAN MARKET SUMMARY

SELECTED ITEMS

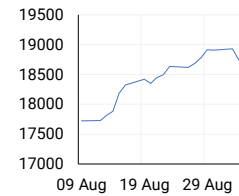
European stocks dropped on Thursday due to concerns over global growth, triggered by mixed economic data. Despite gains in sectors sensitive to interest rates, France's CAC 40 led the declines. In Germany, industrial orders rose more than anticipated in July, but eurozone retail sales fell on an annual basis, adding to the economic worries affecting market sentiment.

EUROPEAN INDICES	CLOSE	PREVIOUS	1D%	5D%	1M%	YTD%
CAC 40	7431.96	7500.97	-0.92	-2.74	3.96	-1.47
DAX 30	18576.50	18591.85	-0.08	-1.78	7.14	10.89
Eurostoxx 50	4825.60	4852.30	-0.55	-2.72	5.62	6.72
FTSE	8241.71	8269.60	-0.34	-1.65	2.92	6.58

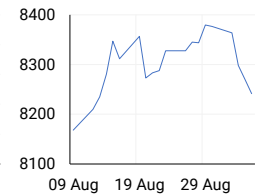
CAC 40



DAX

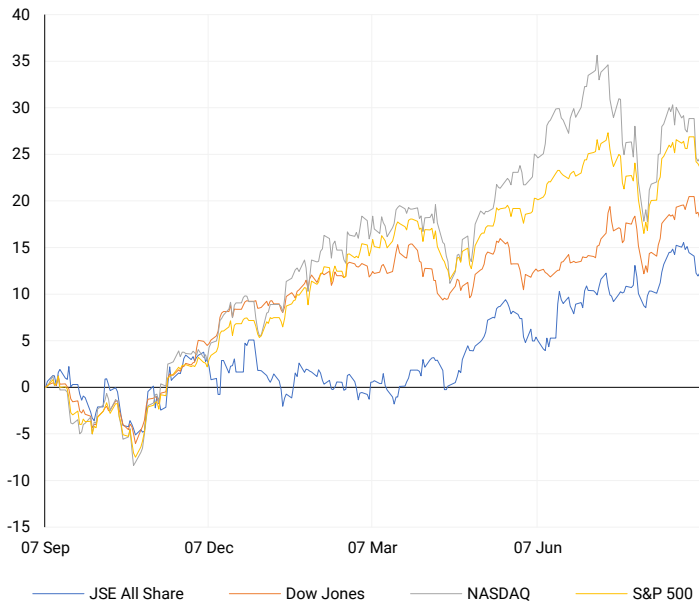


FTSE



AMERICAN INDICES

Normalised percentage performances



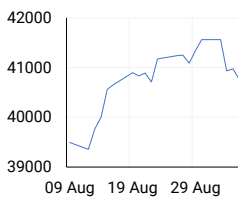
AMERICAN MARKET SUMMARY

SELECTED ITEMS

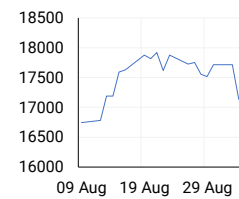
On Thursday, the S&P 500 and Dow closed lower after brief gains from economic reports faded, while the Nasdaq ended slightly higher. Investors remained cautious ahead of today's nonfarm payrolls data, which could influence the Federal Reserve's decision on cutting interest rates. Earlier, Wall Street saw gains as reports eased concerns about the labour market, with the Institute for Supply Management showing services sector growth in August and a drop in jobless claims. However, the ADP National Employment Report indicated that U.S. private employers hired the fewest workers since January 2021, signalling a potential labour market slowdown.

AMERICAN INDICES	CLOSE	PREVIOUS	1D%	5D%	1M%	YTD%
Dow Jones	40755.75	40974.97	-0.54	-1.40	5.30	8.14
Nasdaq	17127.66	17084.30	0.25	-2.22	5.73	14.10
S&P 500	5503.41	5520.07	-0.30	-1.58	6.11	15.38
US VIX	19.90	21.32	-6.66	27.16	-48.41	59.84

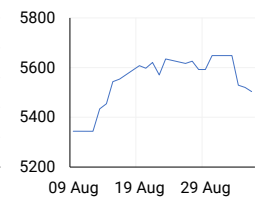
DOW JONES



NASDAQ

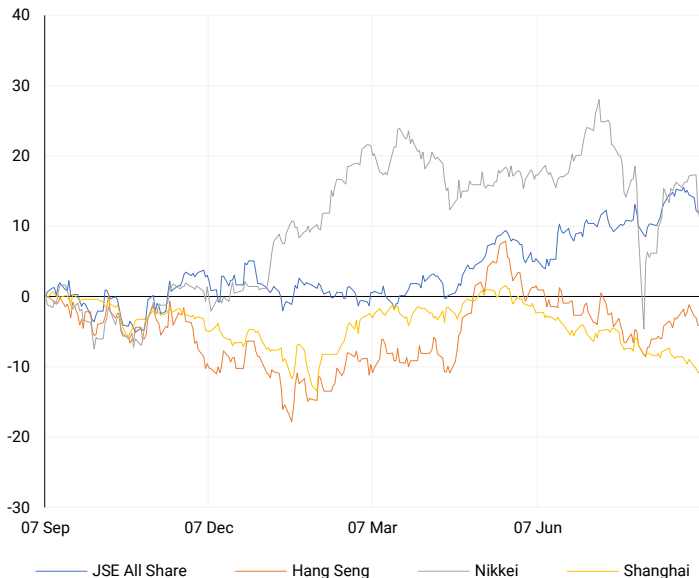


S&P 500



ASIAN INDICES

Normalised percentage performances



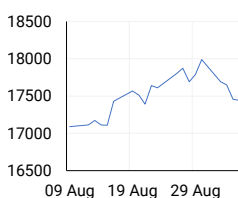
ASIAN MARKET SUMMARY

SELECTED ITEMS

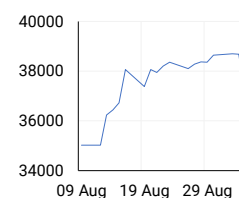
Asia-Pacific markets mostly declined this morning. In Japan, household spending for July rose by just 0.1% in real terms, falling short of the 1.2% growth expected, and contrasting with a 1.4% decline in June. The statistics bureau reported that average household monthly expenditure was 290,931 yen (\$2,031.35), up 3.3% in nominal terms. Household income also rose, reaching 694,483 yen, an 8.9% nominal increase and 5.5% higher in real terms. The weak spending data may limit the Bank of Japan's ability to raise interest rates, though strong wage growth could provide some balance.

ASIAN INDICES	CLOSE	PREVIOUS	1D%	5D%	1M%	YTD%
Hang Seng	17444.30	17457.34	-0.07	-1.92	4.47	2.33
Nikkei 225	36657.09	37047.61	-1.05	-4.45	16.53	9.54
Shanghai	2788.31	2784.28	0.14	-1.23	-2.53	-6.27

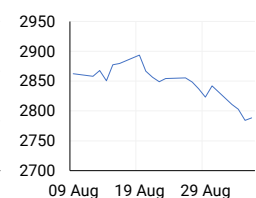
HANG SENG



NIKKEI



SHANGHAI



COMMODITIES MARKET SUMMARY

SELECTED ITEMS

Gold remained below its one-week high this morning but was set for a weekly gain, with attention focused on U.S. jobs data that could influence the size of an anticipated rate cut later this month. Meanwhile, oil prices inched up, supported by a significant drawdown in U.S. crude inventories and OPEC+ delaying production hikes, though mixed U.S. employment data added some uncertainty to the market.

COMMODITY	LAST	CLOSE	% CHG	1D%	5D%	YTD%
Brent Crude	72.68	72.81	-0.18	0.11	-9.12	-5.54
Gold	2518.72	2516.80	0.08	0.85	-0.18	22.00
Palladium	940.57	943.25	-0.28	0.58	-3.70	-14.04
Platinum	932.29	929.55	0.29	2.18	-1.37	-5.84
Silver	28.80	28.82	-0.07	1.91	-2.07	21.15

BRENT CRUDE

One-year



PLATINUM

One-year



GOLD

One-year



CURRENCY PAIR	LAST	CLOSE	% CHG	1D%	5D%	YTD%
USDZAR	17.71	17.71	-0.02	-0.87	-0.20	-3.35
GBPZAR	23.33	23.34	-0.04	-0.60	-0.19	0.19
EURZAR	19.68	19.68	0.03	-0.62	0.04	-2.54
AUDZAR	11.91	11.94	-0.20	-0.63	-1.11	-4.17
EURUSD	1.11	1.11	0.04	0.25	0.30	0.66
USDJPY	143.02	143.45	-0.30	-0.20	-1.06	1.71
GBPUSD	1.32	1.32	-0.02	0.22	0.08	3.51
USDCHF	0.84	0.84	-0.13	-0.29	-0.39	0.29

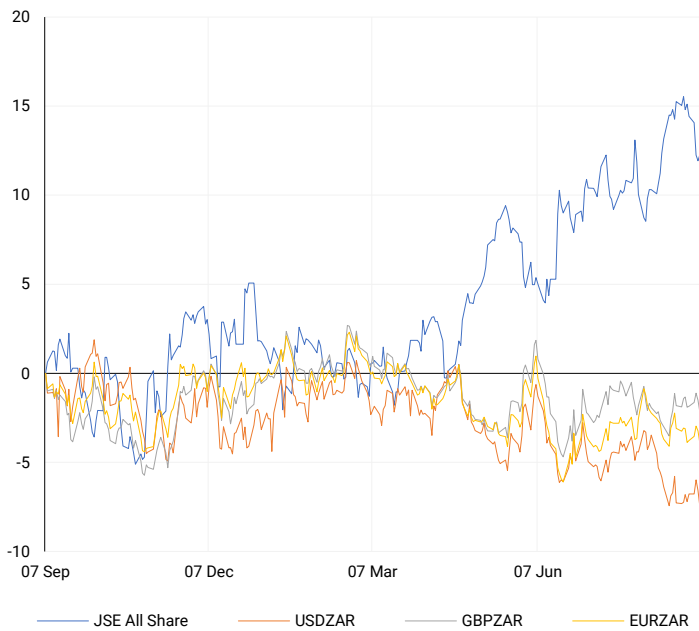
CURRENCY MARKET SUMMARY

SELECTED ITEMS

The South African rand extended its gains on Thursday as improved risk sentiment fuelled expectations of a deeper U.S. interest rate cut this month, analysts noted. Meanwhile, the U.S. dollar hovered near a one-week low against major currencies this morning, with mixed signals from job market data ahead of the crucial nonfarm payrolls report, which is likely to influence Federal Reserve policy decisions.

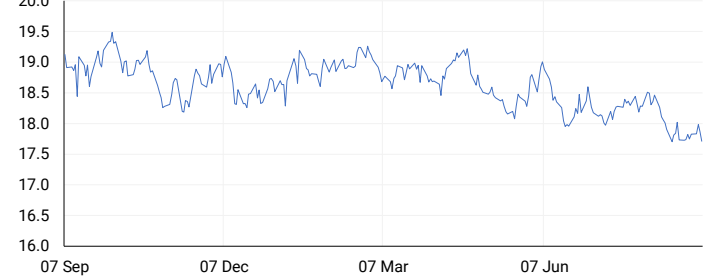
CURRENCY PAIRS vs JSE ALL SHARE

Normalised percentage performances



USDZAR

One-year



EURUSD

One-year



SOURCES | JSE, IRESS, MONEYWEB, CNBC, BBC, CNN

Disclaimer: This note is prepared for Sanlam Private Wealth (Pty) Ltd, by K2013143132 (Pty) Ltd trading as ThompsonGreen. ThompsonGreen is an independent company contracted to Sanlam Private Wealth (Pty) Ltd. The views expressed in this note are those of ThompsonGreen and/or its analysts and not necessarily the views of Sanlam Private Wealth (Pty) Ltd, Sanlam or any officer or agent thereof. K2013143132 (Pty) Ltd trading as ThompsonGreen is a research house and not a registered broker, financial adviser or financial service provider. Our editors and customer services teams also do not give personal investment advice. The information in this document is general advice only and may not be appropriate to your particular investment objectives, financial situation or particular needs. Before investing, or if you are in any doubt about your personal situation, you should seek professional advice from a stockbroker or independent financial adviser authorised by the Financial Sector Conduct Authority.