

GLOBAL OVERVIEW | SELECTED INDICES

SOUTH AFRICAN INDICES		CLOSE	PREVIOUS	1D%	5D%	1M%	YTD%
All Share		81364.89	82146.83	-0.95	-2.85	2.44	5.82
Top 40		73874.19	74721.80	-1.13	-3.17	1.89	4.79
Financial 15		20579.79	20642.03	-0.30	-1.69	7.42	15.14
Industrial 25		111161.68	112541.10	-1.23	-2.76	4.81	7.18
Resource 10		52795.82	53827.93	-1.92	-5.88	-10.26	-8.23
Mid Cap		84964.10	84992.37	-0.03	-3.16	1.48	5.66
Small Cap		85235.85	85298.90	-0.07	-0.46	7.85	17.58
Banks		12942.38	13013.93	-0.55	-2.18	6.62	18.21
Retailers		7175.82	7152.36	0.33	-2.95	8.71	15.12
Property (J253) - TR		2355.50	2325.81	1.28	2.09	10.71	26.39

AMERICAN INDICES		CLOSE	PREVIOUS	1D%	5D%	1M%	YTD%
Dow Jones		40345.41	40755.75	-1.01	-2.93	3.46	7.05
Nasdaq		16690.83	17127.66	-2.55	-5.77	1.98	11.19
S&P 500		5408.42	5503.41	-1.73	-4.25	3.21	13.39
US VIX		22.38	19.90	12.46	49.20	-19.23	79.76

EUROPEAN INDICES		CLOSE	PREVIOUS	1D%	5D%	1M%	YTD%
CAC 40		7341.93	7431.96	-1.21	-3.79	2.97	-2.67
DAX 30		18301.90	18576.50	-1.48	-3.20	5.46	9.25
Eurostoxx 50		4739.75	4825.60	-1.78	-4.39	3.48	4.82
FTSE		8181.47	8241.71	-0.73	-2.33	1.93	5.80

ASIAN INDICES		CLOSE	PREVIOUS	1D%	5D%	1M%	YTD%
Hang Seng		17444.30	17444.30	0.00	-3.03	4.79	2.33
Nikkei 225		36391.47	36657.09	-0.72	-5.84	4.95	8.75
Shanghai		2765.81	2788.31	-0.81	-2.69	-3.54	-7.03

EARLY MORNING MARKETS		LAST	CLOSE	% CHG	1D%	5D%	YTD%
TENCENT		367.00	373.40	-1.71	0.00	-2.25	28.67
BHP AUS		3869.00	3845.00	0.62	-1.18	-5.69	-23.73

NOTE : 5D% and 1M% are rolling percentage moves

INTERNATIONAL ECONOMIC CALENDAR | SELECTED EVENTS

TIME	AREA	TODAY'S EVENTS & RELEASES	PERIOD	EXP.	PREV.
17:00	US	Consumer Inflation Expectations	Aug	3.00%	3.00%
---	---	---	---	---	---
---	---	---	---	---	---
---	---	---	---	---	---
---	---	---	---	---	---

TIME	AREA	PREVIOUS SESSION'S RELEASES	PERIOD	EXP.	ACT.
8:00	ZA	Foreign Exchange Reserves	Aug	\$62.0B	\$63.2B
14:30	US	Non Farm Payrolls	Aug	120.0K	142.0K
14:30	US	Unemployment Rate	Aug	4.30%	4.20%
17:00	US	Fed Waller Speech	---	---	---
---	---	---	---	---	---

JSE ALL SHARE | BEST AND WORST ONE-DAY PERFORMERS

BEST ONE-DAY % PERFORMERS		CODE	CLOSE	1D%	5D%	YTD%
Emira Property Fund Ltd		EMI	1100	4.76	1.48	28.65
Brait PLC		BAT	104	4.00	-9.57	-42.86
SA Corp Real Estate Ltd		SAC	287	3.61	4.74	23.71
Burstone Group Limited		BTN	898	3.34	8.72	12.25
African Rainbow Cap Inv		AIL	670	3.08	8.41	37.01
Raubex Group Ltd		RBX	5204	3.03	5.66	87.73

WORST ONE-DAY % PERFORMERS		CODE	CLOSE	1D%	5D%	YTD%
Metair Investments Ltd		MTA	1469	-3.92	-4.30	-17.24
Anglo American plc		AGL	47600	-3.71	-7.69	0.53
ADvTECH Ltd		ADH	3170	-3.59	-2.16	29.18
PPC Limited		PPC	379	-3.32	-9.33	-5.01
Glencore plc		GLN	8626	-3.08	-7.60	-22.74

DIVIDEND DATA

COMPANY	CODE	EXPECTED DIVIDEND	COMPANY	CODE	EXPECTED DIVIDEND
Absa Group	ABG	685 ZARc	DRDGOLD	DRD	20 ZARc
Spur Corporation	SUR	118 ZARc	Standard Bank	SBK	744 ZARc
Sabvest Capital	SBP	35 ZARc	Gold Fields	GFI	300 ZARc
Italtile	ITE	22 ZARc	ADvTECH	ADH	38 ZARc
Coronation Fund Managers	CML	153 ZARc	Reinet Investments SCA	RNI	35 EURc

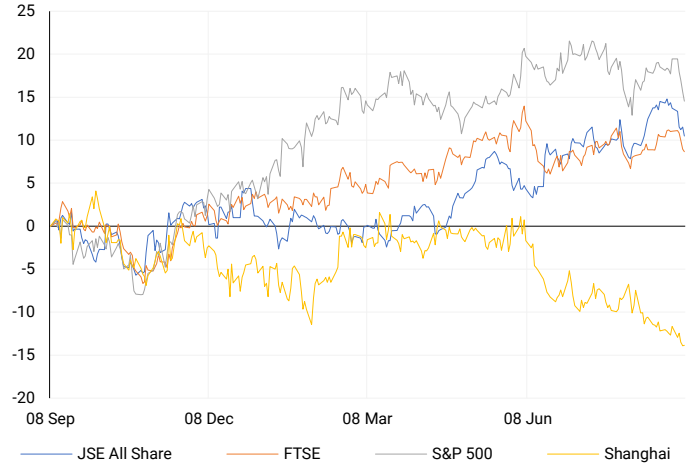
Last date to trade Tue, 10 September

SOURCES | JSE, IRESS, MONEYWEB, CNBC, BBC, CNN

PLEASE SEE THE BOTTOM OF THE LAST PAGE FOR THE FULL DISCLAIMER

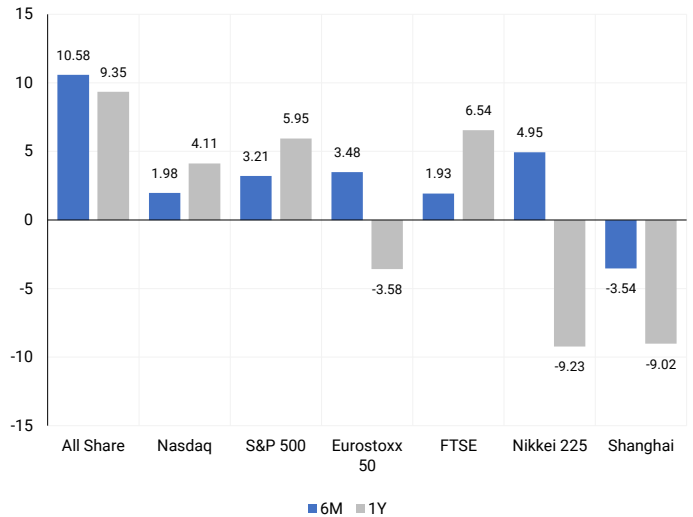
INTERNATIONAL INDICES

Normalised percentage performances - In rand terms



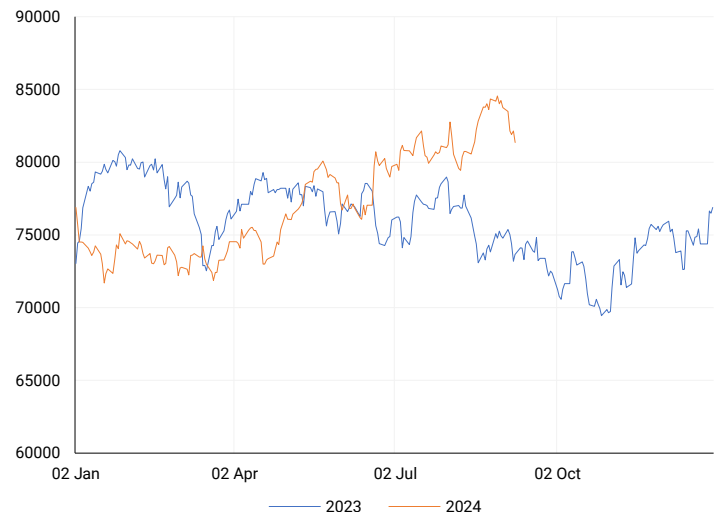
INTERNATIONAL INDICES

6-month & 1-year percentage performances



JSE ALL SHARE INDEX

2023 v 2024 to date



LOCAL EQUITIES | JSE LARGE CAP COMPANIES (Cents Per Share)

COMPANY	CLOSE	PREVIOUS	1D%	5D%	1M%	YTD%
Absa Group Limited	17138	17284	-0.84	-2.55	15.99	4.69
Anglo American plc	47600	49436	-3.71	-7.69	-8.16	0.53
Anglo American Plat Ltd	59405	59888	-0.81	-3.50	-4.16	-38.38
Anglogold Ashanti Ltd	51216	51645	-0.83	-3.17	-1.43	44.92
Anheuser-Busch InBev SA NV	111873	113066	-1.06	3.14	0.07	-6.78
BHP Group Limited	45589	46645	-2.26	-6.37	-7.15	-28.03
BID Corporation Ltd	44664	45404	-1.63	-0.56	3.84	4.69
British American Tob plc	68441	67929	0.75	3.68	7.28	26.39
Compagnie Fin Richemont	253103	258484	-2.08	-9.53	-4.71	-1.42
Capitec Bank Hldgs Ltd	287666	290706	-1.05	-1.68	3.29	41.96
Discovery Ltd	15052	15053	-0.01	-1.62	10.64	4.76
Firststrand Ltd	8480	8508	-0.33	-1.37	8.30	15.36
Gold Fields Ltd	23904	24400	-2.03	-3.59	-20.93	-13.95
Glencore plc	8626	8900	-3.08	-7.60	-6.58	-22.74
Impala Platinum Hlgs Ltd	7473	7575	-1.35	-2.95	-8.54	-18.12
Kumba Iron Ore Ltd	32086	32182	-0.30	-9.08	-17.02	-47.81
Mondi plc	33260	33700	-1.31	-3.55	-0.68	-8.37
MTN Group Ltd	9192	9103	0.98	3.44	26.44	-20.42
Naspers Ltd -N-	353612	364149	-2.89	-3.85	4.20	13.05
Prosus N.V.	64300	66043	-2.64	-2.79	3.63	14.74
South32 Limited	3490	3581	-2.54	-6.43	0.40	-17.28
Standard Bank Group Ltd	23361	23492	-0.56	-2.66	7.27	12.26
Shoprite Holdings Ltd	29995	30241	-0.81	-3.27	3.08	9.05
Sanlam Limited	8423	8544	-1.42	-5.24	9.38	15.70
Sasol Limited	12684	12935	-1.94	-7.81	-4.19	-31.55
Sibanye Stillwater Ltd	1586	1610	-1.49	-7.95	-13.33	-36.31
Vodacom Group Ltd	10995	11110	-1.04	-0.08	13.01	3.73

SOUTH AFRICAN MARKET SUMMARY

SELECTED ITEMS

On the Johannesburg Stock Exchange, the Top-40 index dropped by 1.1%. South Africa's 2030 government bond reached its strongest level in almost three years. Consumer inflation fell to 4.6% year-on-year in July, a three-year low, nearing the central bank's target range of 3% to 6%. Sanlam, the country's largest life insurer, expects modest investment outflows as clients access part of their retirement savings under new Pension Fund Act rules. Airports Company South Africa reported a 16% revenue increase to R7 billion, as air travel recovers to pre-Covid levels.

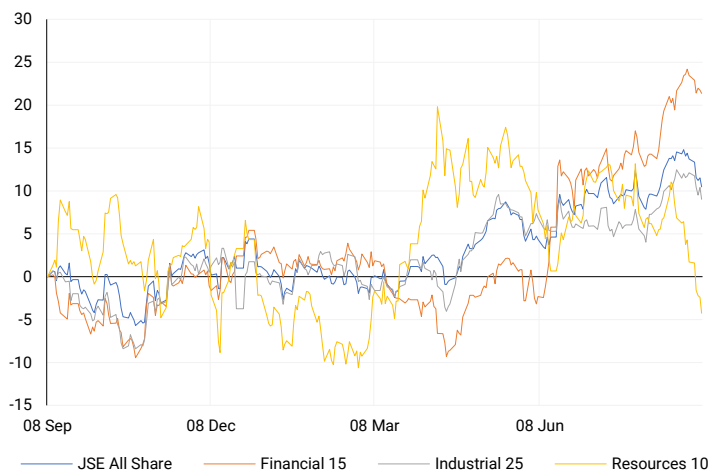
JSE ALL SHARE

One-year



LOCAL INDICES

Normalised percentage performances



EXPECTED COMPANY REPORTING SCHEDULE

COMPANY	CODE	RELEASE	DATE
Bell Equipment	BEL	Interim	9 Sep '24
Truworths	TRU	Final	12 Sep '24
Sibanye Stillwater	SSW	Interim	12 Sep '24
Outsurance	OUT	Final	16 Sep '24
Discovery	DSY	Final	20 Sep '24

BANK AND OTHER SELECTE PREFERENCE SHARES

COMPANY	CODE	CLOSE	CLEAN YIELD	NEXT LDT (Est.)
Investec Limited	INPR	8900	11.24	Thu, 06 Jun '24
Standard Bank	SBPP	8702	11.15	Thu, 05 Sep '24
Absa	ABSP	83017	11.48	Thu, 12 Sep '24
Capitec	CPIP	10185	9.69	Thu, 19 Sep '24
Steinhoff	SHFF	9734	10.47	Thu, 17 Oct '24
Grindrod	GNDP	9305	12.22	Thu, 19 Sep '24
Netcare	NTCP	8200	11.82	Thu, 31 Oct '24
Discovery	DSBP	9700	11.91	Thu, 19 Sep '24
Invicta	IVTP	---	13.41	Thu, 27 Jun '24

LOCAL SENS ANNOUNCEMENTS

SELECTED RELEASE

AFRICAN RAINBOW MINERALS LIMITED – Condensed Reviewed Results

The company's headline earnings for the year ending June 30, 2024, dropped by 43% to R5.08 billion, or R25.91 per share, compared to R8.98 billion, or R45.82 per share, in 2023. Revenue also fell by 20%, down to R12.92 billion from R16.1 billion in 2023. A final dividend of R9.00 per share was declared, bringing the total dividend for 2024 to R15.00 per share, down from R26.00 per share in 2023. Despite these declines, the company maintained a strong financial position with net cash of R7.2 billion, compared to R9.8 billion in the previous year.

ARI | -2.91% OPEN | 15750c HIGH | 15900c LOW | 15326c CLOSE | 15729c TIME | 07:05

MOMENTUM GROUP LIMITED – Trading Statement

The Group anticipates that for the current year, earnings per share will range between 278 and 288 cents, representing a 30% to 35% increase compared to 212.8 cents in 2023. Headline earnings per share are expected to be between 293 and 304 cents, up 41% to 46% from 207.9 cents in 2023. Normalised headline earnings per share are projected to be between 304 and 315 cents, reflecting a 33% to 38% increase compared to 228.0 cents last year.

MTM | 2.18% OPEN | 2700c HIGH | 2761c LOW | 2600c CLOSE | 2739c TIME | 07:30

CAXTON AND CTP PUBLISHERS AND PRINTERS LIMITED – Reviewed Provisional Group Results

For the year ended 30 June 2024, the Group's revenue decreased by 4.7% to R6.65 billion compared to R6.97 billion in 2023. Profit from operating activities before depreciation and amortisation dropped 5.5% to R927.2 million, and after depreciation, it fell 11.4% to R657.9 million. Total profit for the year declined by 12.6% to R657.4 million. However, headline earnings increased by 3.3% to R703.2 million, and cash reserves grew 32.7% to R2.51 billion. Earnings per share dropped 10% to 182.9 cents, while headline earnings per share rose 4% to 196.1 cents. Net asset value per share increased by 6.9% to 2162 cents, with a steady dividend of 60 cents per share.

CAT | 9.48% OPEN | 1197c HIGH | 1396c LOW | 1197c CLOSE | 1270c TIME | 10:00

CLIENTÈLE LIMITED – Trading Statement

The Group expects its earnings per share (EPS) and headline earnings per share (HEPS) to decrease by 33% to 53%, which means a reduction of between 97 cents and 68 cents compared to the EPS of 145.44 cents from the previous period.

CLI | 0.00% OPEN | 1177c HIGH | 1177c LOW | 1177c CLOSE | 1177c TIME | 17:00

LOCAL EQUITIES | JSE MID CAP COMPANIES (Cents Per Share)

COMPANY	CODE	CLOSE	PREVIOUS	1D%	1M%	YTD%
Aspen Pharmacare Hldgs Ltd	APN	19928	20032	-0.52	-15.78	-2.07
African Rainbow Min Ltd	ARI	15729	16200	-2.91	-21.67	-21.36
AVI Ltd	AVI	10173	10227	-0.53	6.89	23.96
Barloworld Ltd	BAW	9279	9374	-1.01	-0.15	17.46
Bidvest Ltd	BVT	28019	28563	-1.90	8.94	11.06
Bytes Technology Grp PLC	BYI	10661	10729	-0.63	-3.39	-25.56
Capital&Counties Prop plc	CCO	3502	3519	-0.48	3.73	7.75
Clicks Group Ltd	CLS	36919	36735	0.50	5.20	13.35
Dis-Chem Pharmacies Ltd	DCP	3551	3563	-0.34	1.17	15.71
Exxaro Resources Ltd	EXX	15375	15400	-0.16	-17.68	-24.81
Fortress Real Est INV B	FFB	1985	1961	1.22	17.04	38.23
Growthpoint Prop Ltd	GRT	1442	1406	2.56	13.10	23.46
Harmony GM Co Ltd	HAR	16035	15990	0.28	-6.01	34.08
Hammerson plc	HMN	684	680	0.59	5.39	0.59
Investec Ltd	INL	13342	13329	0.10	-0.30	6.23
Investec plc	INP	13379	13454	-0.56	-0.44	6.22
Italtile Ltd	ITE	1237	1218	1.56	6.64	10.45
Life Healthc Grp Hldgs Ltd	LHC	1437	1446	-0.62	11.40	-21.77
MultiChoice Group Ltd	MCG	10760	10729	0.29	-0.06	32.81
Montauk Renewables Inc	MKR	8200	8108	1.13	-18.00	-52.33
Mr Price Group Ltd	MRP	22942	23000	-0.25	7.83	46.30
Momentum Met Hldgs Ltd	MTM	2739	2800	-2.18	5.75	25.13
Ninety One Plc	N91	3784	3735	1.31	0.42	-12.24
Nedbank Group Ltd	NED	28300	28347	-0.17	1.84	30.88
Northam Platinum Hldgs Ltd	NPH	9350	9500	-1.58	-26.94	-33.42
NEPI Rockcastle N.V.	NRP	14716	14680	0.25	7.46	16.44
Netcare Limited	NTC	1342	1335	0.52	4.93	-5.76
Ninety One Limited	NY1	3765	3726	1.05	0.70	-12.38
Old Mutual Limited	OMU	1280	1271	0.71	8.75	-1.99
OUTsurance Group Ltd	OUT	4996	4909	1.77	7.88	18.39
Pick n Pay Stores Ltd	PIK	2325	2353	-1.19	5.68	-0.09
Pepkor Holdings Ltd	PPH	2139	2135	0.19	8.36	8.97
Quilter Plc	QLT	3149	3170	-0.66	5.99	29.70
Redefine Properties Ltd	RDF	482	473	1.90	14.76	25.19
Remgro Ltd	REM	14440	14448	-0.06	8.53	-11.13
Resilient REIT Limited	RES	5760	5654	1.87	14.47	30.05
Reinet Investments S.C.A	RNI	48600	48241	0.74	5.73	4.24
Sappi Ltd	SAP	4565	4556	0.20	-2.56	3.28
Santam Limited	SNT	35794	35803	-0.03	13.15	24.90
The Spar Group Ltd	SPP	12264	12031	1.94	0.92	4.02
Sirius Real Estate Ltd	SRE	2294	2289	0.22	5.37	3.57
Tiger Brands Ltd	TBS	23540	23559	-0.08	8.45	16.95
Transaction Capital Ltd	TCP	267	262	1.91	-2.55	-66.54
The Foschini Group Limited	TFG	14005	13868	0.99	5.62	26.22
Thungela Resources Ltd	TGA	10860	11053	-1.75	-11.59	-29.39
Telkom SA SOC Ltd	TKG	2711	2740	-1.06	15.81	-8.84
Truworths Int Ltd	TRU	9325	9445	-1.27	6.49	25.42
Woolworths Holdings Ltd	WHL	6413	6298	1.83	10.87	-11.18
Zeda Limited	ZZD	1305	1318	-0.99	12.02	2.35

LOCAL EQUITIES | JSE SMALL CAP COMPANIES (Cents Per Share)

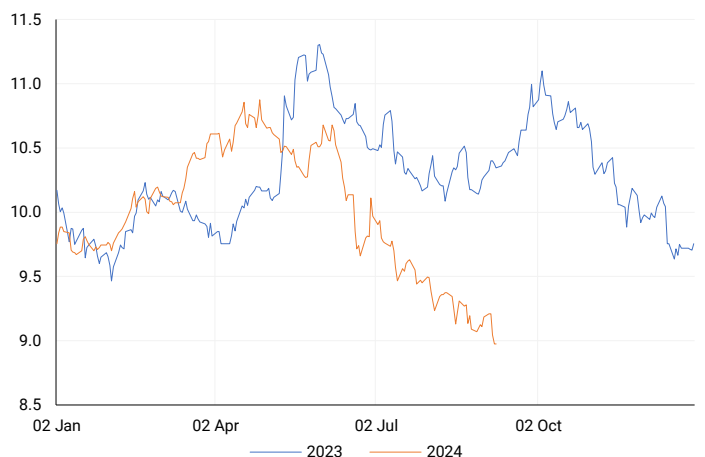
COMPANY	CODE	CLOSE	PREVIOUS	1D%	1M%	YTD%
ArcelorMittal SA Limited	ACL	128	128	0.00	9.40	-21.95
ADVTECH Ltd	ADH	3170	3288	-3.59	12.13	29.18
Altron Limited A	AEL	1673	1705	-1.88	2.89	63.22
AECI Limited	AFE	10421	10450	-0.28	2.17	-5.00
Alexander Forbes Grp Hldgs	AFH	685	680	0.74	3.79	3.79
Afrimat Limited	AFT	6400	6430	-0.47	-1.69	1.59
African Rainbow Cap Inv	AIL	670	650	3.08	0.00	37.01
Adcock Ingram Hldgs Ltd	AIP	6488	6554	-1.01	14.43	7.95
Astral Foods Ltd	ARL	17254	17337	-0.48	5.19	17.72
Attacq Limited	ATT	1148	1154	-0.52	6.39	24.51
Brait PLC	BAT	104	100	4.00	15.56	-42.86
Blue Label Telecoms Ltd	BLU	485	475	2.11	12.79	25.00
Burstone Group	BTN	898	869	3.34	16.62	12.25
Coronation Fund Mngrs Ld	CML	3903	3954	-1.29	7.28	25.26
Curro Holdings Limited	COH	1303	1322	-1.44	13.30	11.85
Cashbuild Ltd	CSB	15810	16000	-1.19	0.32	-5.29
DRD Gold Ltd	DRD	1419	1443	-1.66	-15.33	-10.02
Datatec Ltd	DTC	3635	3666	-0.85	6.60	-10.25
Emira Property Fund Ltd	EMI	1100	1050	4.76	0.18	28.65
Equites Prop Fund Ltd	EQU	1395	1361	2.50	6.65	0.00
Famous Brands Ltd	FBR	5793	5735	1.01	7.30	0.00
Fairvest Limited B	FTB	446	442	0.90	13.78	29.65
Grindrod Ltd	GND	1456	1481	-1.69	-3.96	27.05
Hosken Cons Inv Ltd	HCI	18533	18584	-0.27	2.96	-8.52
Hudaco Industries Ltd	HDC	18810	18438	2.02	6.48	17.10
Hyprop Inv Ltd	HYP	3945	3865	2.07	19.36	26.81
JSE Ltd	JSE	11600	11482	1.03	9.19	25.49
KAP Industrial Hldgs Ltd	KAP	340	350	-2.86	18.47	29.77
Karoo Ltd	KRO	66100	66120	-0.03	1.69	39.16
PSG Konsult Limited	KST	1732	1734	-0.12	8.25	12.83
Libstar Holdings Ltd	LBR	425	404	5.20	11.55	21.43
Lighthouse Properties plc	LTE	794	789	0.63	-1.98	8.03
Industrials REIT Limited	MLI	2.1	2	5.00	5.00	200.00
MAS P.L.C	MSP	1739	1740	-0.06	-1.70	0.46
Metair Investments Ltd	MTA	1469	1529	-3.92	14.77	-17.24
Motus Holdings Ltd	MTH	11903	12000	-0.81	18.18	17.27
Murray & Roberts Hldgs	MUR	258	260	-0.77	-10.73	73.15
Oceana Group Ltd	OCE	6650	6655	-0.08	-3.71	-5.90
Omnia Holdings Ltd	OMN	6280	6335	-0.87	-1.88	-3.93
Pan African Resource plc	PAN	679	692	-1.88	5.11	66.01
PPC Limited	PPC	379	392	-3.32	2.43	-5.01
Raubex Group Ltd	RBX	5204	5051	3.03	20.91	87.73
RFG Holdings Limited	RFG	1600	1555	2.89	6.67	18.52
Reunert Ltd	RLO	7612	7660	-0.63	8.73	26.99
SA Corp Real Estate Ltd	SAC	287	277	3.61	7.49	23.71
Super Group Ltd	SPG	2740	2758	-0.65	-6.99	-7.90
Stor-Age Prop REIT Ltd	SSS	1441	1425	1.12	10.00	10.34
Southern Sun LTD	SSU	680	673	1.04	16.24	29.52
Sun International Ltd	SUI	4364	4355	0.21	18.55	6.44
Tharisa plc	THA	1750	1785	-1.96	-5.71	15.82
Tsogo Sun Gaming Ltd	TSG	1187	1210	-1.90	8.80	-3.10
Vukile Property Fund Ltd	VKE	1779	1778	0.06	8.94	25.99
Wilson Bayly Hlm-Ovc Ltd	WBO	20600	20600	0.00	16.38	58.39

10-YEAR BOND YIELD | SELECTED ITEMS (Basis Point Change)

REGION	YIELD	1D	1M	1Y
United States	3.74%	1	-25	--
United Kingdom	3.88%	-3	-9	-53
Germany	2.17%	-4	-10	-44
Japan	0.88%	1	4	--
South African 10Y	8.99%	-2	-39	-140

SOUTH AFRICAN 10-YEAR

2023 vs 2024 to date

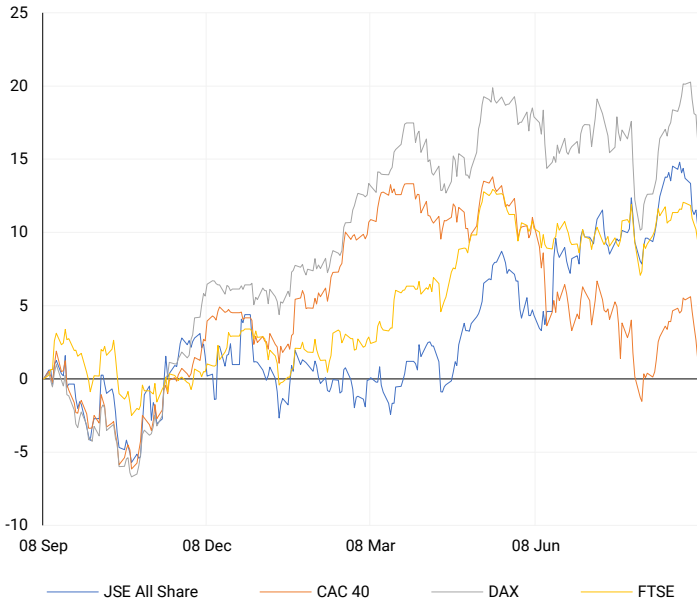


GLOBAL INTEREST RATES | SELECTED ITEMS

REGION	DATE CHANGED	CURRENT RATE
United States	Wed, 26 Jul '23	5.25%-5.50%
United Kingdom	Thu, 03 Aug '23	5.25%
European	Thu, 27 Jul '23	4.25%
SA Repo Rate	Thu, 25 May '23	8.25%
SA Prime Rate	Thu, 25 May '23	11.75%

EUROPEAN INDICES

Normalised percentage performances



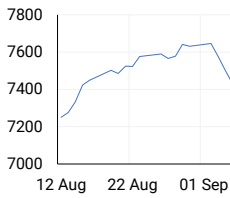
EUROPEAN MARKET SUMMARY

SELECTED ITEMS

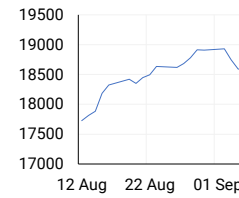
European shares declined for the fifth consecutive session on Friday, marking their worst performance since early August. Euro zone GDP growth for the second quarter was revised down to 0.2% from the previous estimate of 0.3%. Looking ahead, the European Central Bank is expected to cut interest rates by 25 basis points this week. However, European markets are likely to be influenced by U.S. inflation data, which is expected to have a significant impact on market movements.

EUROPEAN INDICES	CLOSE	PREVIOUS	1D%	5D%	1M%	YTD%
CAC 40	7341.93	7431.96	-1.21	-3.79	2.97	-2.67
DAX 30	18301.90	18576.50	-1.48	-3.20	5.46	9.25
Eurostoxx 50	4739.75	4825.60	-1.78	-4.39	3.48	4.82
FTSE	8181.47	8241.71	-0.73	-2.33	1.93	5.80

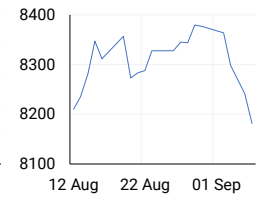
CAC 40



DAX

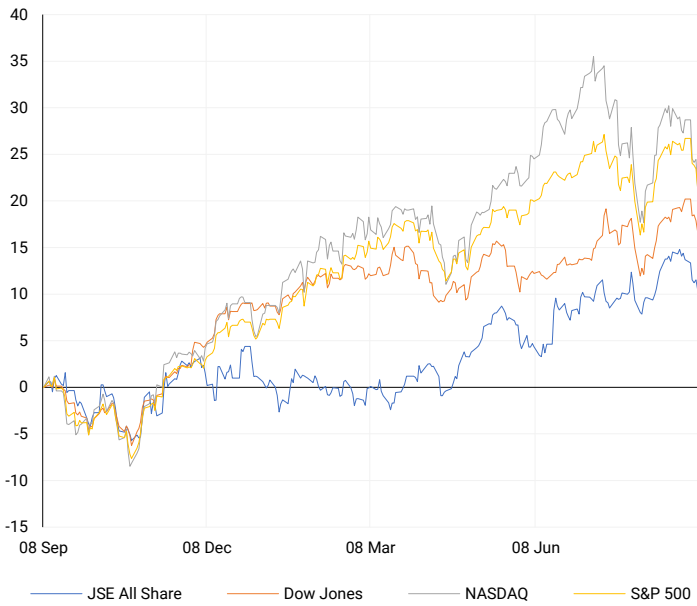


FTSE



AMERICAN INDICES

Normalised percentage performances



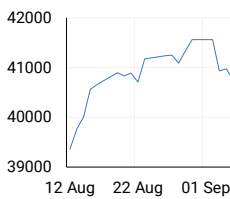
AMERICAN MARKET SUMMARY

SELECTED ITEMS

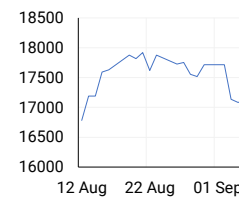
U.S. stocks fell on Friday following a jobs report that indicated a slowing labour market, leaving traders uncertain about future Federal Reserve rate cuts. The U.S. Labor Department reported that 142,000 jobs were added in August, below expectations, and July's growth was revised down to 89,000. This week's inflation data will likely provide more clarity on the Fed's potential rate-cut decisions.

AMERICAN INDICES	CLOSE	PREVIOUS	1D%	5D%	1M%	YTD%
Dow Jones	40345.41	40755.75	-1.01	-2.93	3.46	7.05
Nasdaq	16690.83	17127.66	-2.55	-5.77	1.98	11.19
S&P 500	5408.42	5503.41	-1.73	-4.25	3.21	13.39
US VIX	22.38	19.90	12.46	49.20	-19.23	79.76

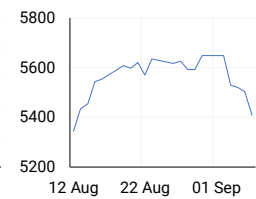
DOW JONES



NASDAQ

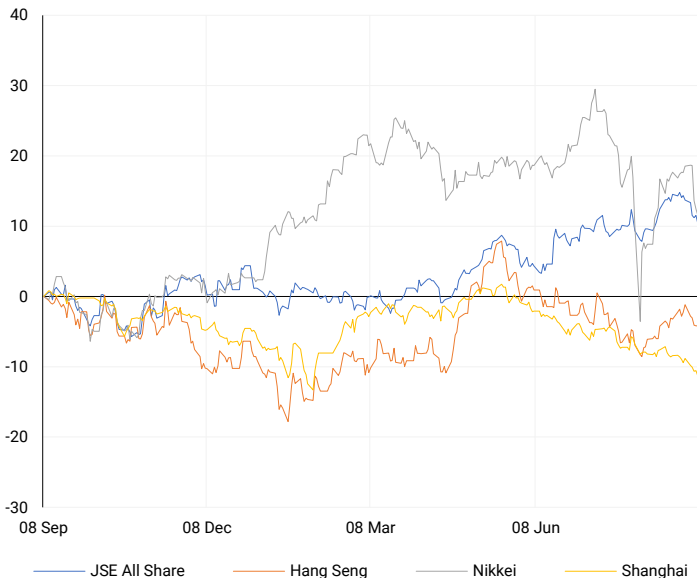


S&P 500



ASIAN INDICES

Normalised percentage performances



ASIAN MARKET SUMMARY

SELECTED ITEMS

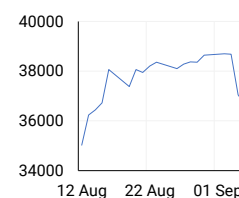
Asia-Pacific markets declined this morning, with Japan's Nikkei 225 leading the losses. Investors reacted to Japan's revised second-quarter GDP, which grew 2.9% annually, below the 3.2% expected. This softer growth limits the Bank of Japan's ability to raise interest rates. In China, the consumer price index (CPI) rose 0.6% year-on-year, below the expected 0.7%, and 0.4% month-on-month, also missing expectations of 0.5%. These figures added to the cautious market sentiment in the region.

ASIAN INDICES	CLOSE	PREVIOUS	1D%	5D%	1M%	YTD%
Hang Seng	17444.30	17444.30	0.00	-3.03	4.79	2.33
Nikkei 225	36391.47	36657.09	-0.72	-5.84	4.95	8.75
Shanghai	2765.81	2788.31	-0.81	-2.69	-3.54	-7.03

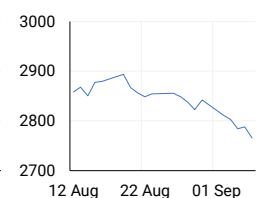
HANG SENG



NIKKEI



SHANGHAI



COMMODITIES MARKET SUMMARY

SELECTED ITEMS

In commodity markets this morning, falling bond yields kept gold prices steady at \$2,497 per ounce, just below its recent all-time high of \$2,531. Oil prices regained some support after experiencing their largest weekly drop in 11 months due to ongoing concerns about global demand.

COMMODITY	LAST	CLOSE	% CHG	1D%	5D%	YTD%
Brent Crude	71.94	71.53	0.57	-1.76	-9.25	-7.20
Gold	2497.29	2497.31	0.00	-0.77	-0.24	21.05
Palladium	922.31	914.50	0.85	-3.05	-5.53	-16.66
Platinum	934.05	924.60	1.02	-0.53	-0.51	-6.35
Silver	27.98	27.94	0.14	-3.05	-3.19	17.45

BRENT CRUDE

One-year



PLATINUM

One-year



GOLD

One-year



CURRENCY PAIR	LAST	CLOSE	% CHG	1D%	5D%	YTD%
USDZAR	17.85	17.85	-0.04	0.80	0.14	-2.57
GBPZAR	23.40	23.44	-0.16	0.44	0.18	0.62
EURZAR	19.76	19.79	-0.15	0.59	0.51	-1.96
AUDZAR	11.91	11.91	-0.04	-0.23	-1.26	-4.39
EURUSD	1.11	1.11	-0.10	-0.22	0.35	0.44
USDJPY	142.93	142.31	0.44	-0.79	-2.65	0.90
GBPUSD	1.31	1.31	-0.11	-0.38	0.02	3.12
USDCHF	0.85	0.84	0.35	-0.12	-0.82	0.17

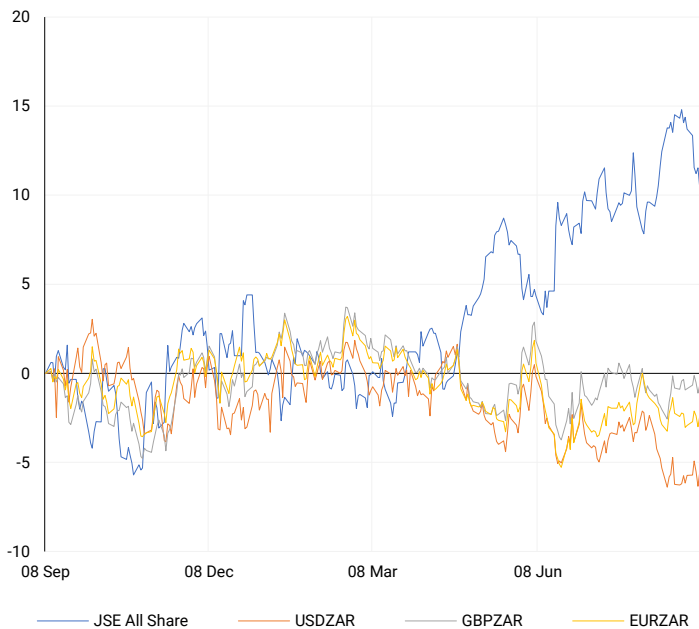
CURRENCY MARKET SUMMARY

SELECTED ITEMS

The South African rand weakened on Friday following U.S. data that indicated a significant Federal Reserve interest rate cut might not be necessary. Meanwhile, South Africa's benchmark government bond reached a nearly three-year high due to improved investor sentiment. This morning, the U.S. dollar remained stable within tight ranges, and the yen eased some of its safe-haven gains, as investors awaited U.S. inflation data for further clues on the Federal Reserve's upcoming rate cut decision.

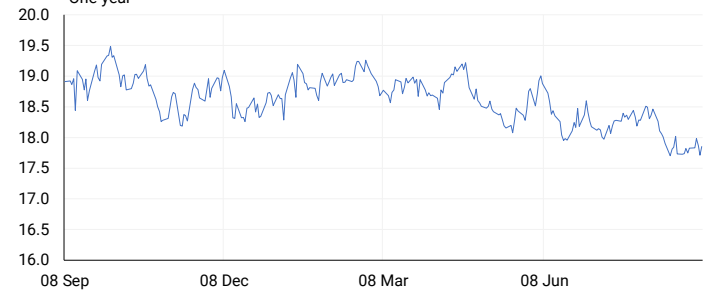
CURRENCY PAIRS vs JSE ALL SHARE

Normalised percentage performances



USDZAR

One-year



EURUSD

One-year



SOURCES | JSE, IRESS, MONEYWEB, CNBC, BBC, CNN

Disclaimer: This note is prepared for Sanlam Private Wealth (Pty) Ltd, by K2013143132 (Pty) Ltd trading as ThompsonGreen. ThompsonGreen is an independent company contracted to Sanlam Private Wealth (Pty) Ltd. The views expressed in this note are those of ThompsonGreen and/or its analysts and not necessarily the views of Sanlam Private Wealth (Pty) Ltd, Sanlam or any officer or agent thereof. K2013143132 (Pty) Ltd trading as ThompsonGreen is a research house and not a registered broker, financial adviser or financial service provider. Our editors and customer services teams also do not give personal investment advice. The information in this document is general advice only and may not be appropriate to your particular investment objectives, financial situation or particular needs. Before investing, or if you are in any doubt about your personal situation, you should seek professional advice from a stockbroker or independent financial adviser authorised by the Financial Sector Conduct Authority.