

GLOBAL OVERVIEW | SELECTED INDICES

SOUTH AFRICAN INDICES						
	CLOSE	PREVIOUS	1D%	5D%	1M%	YTD%
All Share	81641.90	81441.63	0.25	-0.63	1.12	6.18
Top 40	74012.68	73924.07	0.12	-1.06	0.39	4.99
Financial 15	20928.85	20699.12	1.11	1.66	8.00	17.10
Industrial 25	111472.39	111247.65	0.20	-0.98	1.94	7.48
Resource 10	51629.04	52466.76	-1.60	-4.87	-11.81	-10.26
Mid Cap	85045.91	84605.62	0.52	-0.40	0.33	5.76
Small Cap	85847.46	85242.99	0.71	1.44	6.75	18.42
Banks	13216.65	13035.61	1.39	1.58	8.17	20.72
Retailers	7277.03	7169.55	1.50	1.16	8.40	16.74
Property (J253) - TR	2383.26	2369.06	0.60	3.62	9.85	27.88
AMERICAN INDICES						
	CLOSE	PREVIOUS	1D%	5D%	1M%	YTD%
Dow Jones	40736.96	40829.59	-0.23	-0.49	3.14	8.09
Nasdaq	17025.88	16884.60	0.84	-0.64	1.68	13.42
S&P 500	5495.52	5471.05	0.45	-0.60	2.83	15.21
US VIX	19.08	19.45	-1.90	-7.92	-6.33	53.25
EUROPEAN INDICES						
	CLOSE	PREVIOUS	1D%	5D%	1M%	YTD%
CAC 40	7407.55	7425.26	-0.24	-2.21	1.90	-1.80
DAX 30	18265.92	18443.56	-0.96	-2.57	3.06	9.04
Eurostoxx 50	4748.50	4771.00	-0.47	-3.31	1.58	5.02
FTSE	8205.98	8270.84	-0.78	-1.11	0.46	6.11
ASIAN INDICES						
	CLOSE	PREVIOUS	1D%	5D%	1M%	YTD%
Hang Seng	17234.09	17196.96	0.22	-2.36	0.84	1.10
Nikkei 225	36159.16	36215.75	-0.16	-6.53	3.24	8.05
Shanghai	2744.19	2736.49	0.28	-2.10	-4.12	-7.76
EARLY MORNING MARKETS						
	LAST	CLOSE	% CHG	1D%	5D%	YTD%
TENCENT	367.00	368.60	-0.43	-0.70	-2.54	27.02
BHP AUS	3920.00	3866.00	1.40	-0.26	-2.45	-23.31

NOTE : 5D% and 1M% are rolling percentage moves

INTERNATIONAL ECONOMIC CALENDAR | SELECTED EVENTS

TIME	AREA	TODAY'S EVENTS & RELEASES	PERIOD	EXP.	PREV.
8:00	GB	GDP m/m	Jul	0.20%	0.00%
14:30	US	Core Inflation Rate m/m	Aug	0.30%	0.20%
14:30	US	Inflation Rate m/m	Aug	0.20%	0.20%
---	---	---	---	---	---
---	---	---	---	---	---
TIME	AREA	PREVIOUS SESSION'S RELEASES	PERIOD	EXP.	ACT.
8:00	GB	Claimant Count Change	Aug	91.0K	23.7K
13:00	ZA	Manufacturing Production m/m	Jul	-1.00%	2.10%
---	---	---	---	---	---
---	---	---	---	---	---
---	---	---	---	---	---

JSE ALL SHARE | BEST AND WORST ONE-DAY PERFORMERS

BEST ONE-DAY % PERFORMERS						
	CODE	CLOSE	1D%	5D%	YTD%	
Attacq Limited	ATT	1260	6.33	10.33	36.66	
PPC Limited	PPC	401	4.97	-1.72	0.50	
Sappi Ltd	SAP	4706	4.16	6.30	6.47	
PSG Fin Services Ltd	KST	1799	3.69	4.29	17.20	
Italtile Ltd	ITE	1270	3.00	5.83	13.39	
Impala Platinum Hlgs Ltd	IMP	7350	2.98	-5.79	-19.47	
WORST ONE-DAY % PERFORMERS						
	CODE	CLOSE	1D%	5D%	YTD%	
AngloGold Ashanti plc	ANG	47958	-5.71	-6.70	35.70	
RCL Foods Limited	RCL	851	-2.74	-7.20	0.00	
Tharisa plc	THA	1700	-2.58	-8.11	12.51	
Blue Label Telecoms Ltd	BLU	479	-2.24	-1.44	23.45	
Harmony GM Co Ltd	HAR	15550	-2.20	-6.71	30.03	

DIVIDEND DATA

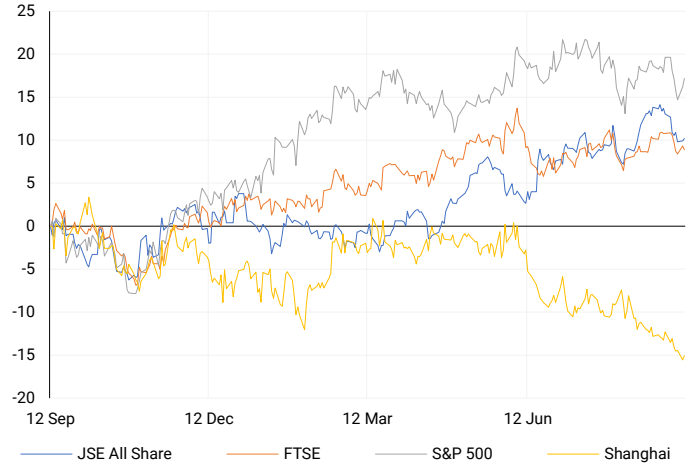
COMPANY	CODE	EXPECTED DIVIDEND	COMPANY	CODE	EXPECTED DIVIDEND
Absa Group	ABG	685 ZARc	DRDGOLD	DRD	20 ZARc
Spur Corporation	SUR	118 ZARc	Standard Bank	SBK	744 ZARc
Sabvest Capital	SBP	35 ZARc	Gold Fields	GFI	300 ZARc
Italtile	ITE	22 ZARc	ADVTECH	ADH	38 ZARc
Coronation Fund Managers	CML	153 ZARc	Reinet Investments SCA	RNI	35 EURc

SOURCES | JSE, IRESS, MONEYWEB, CNBC, BBC, CNN

PLEASE SEE THE BOTTOM OF THE LAST PAGE FOR THE FULL DISCLAIMER

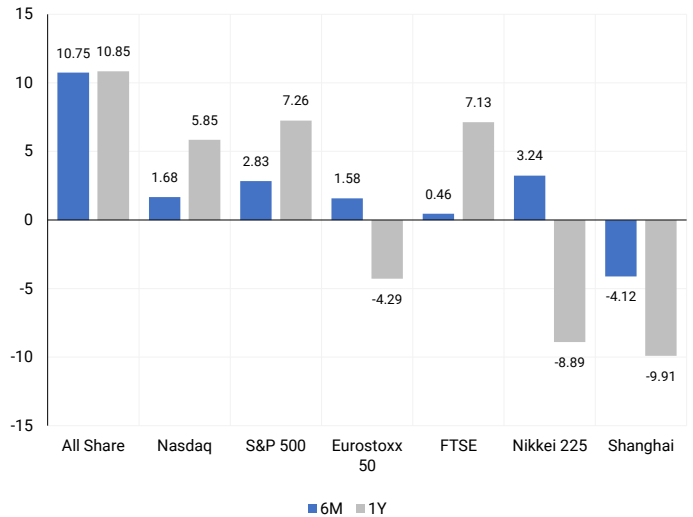
INTERNATIONAL INDICES

Normalised percentage performances - In rand terms



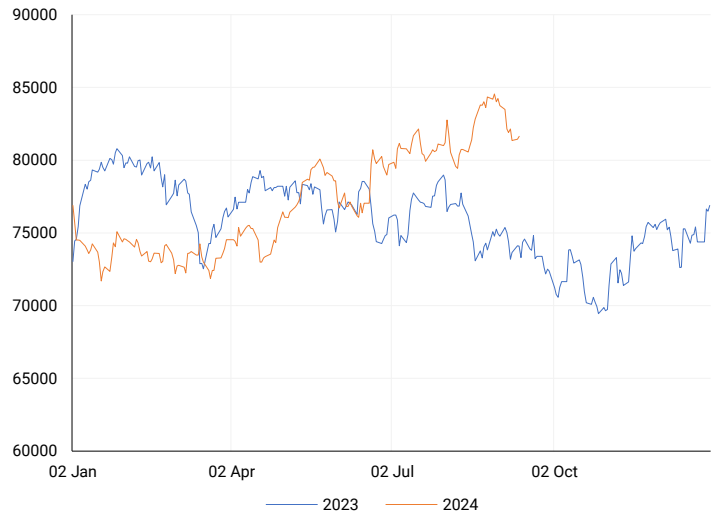
INTERNATIONAL INDICES

6-month & 1-year percentage performances



JSE ALL SHARE INDEX

2023 v 2024 to date



Ex div Wed, 11 September

LOCAL EQUITIES | JSE LARGE CAP COMPANIES (Cents Per Share)

COMPANY	CLOSE	PREVIOUS	1D%	5D%	1M%	YTD%
Absa Group Limited	17325	17194	0.76	0.83	14.33	5.83
Anglo American plc	46669	47445	-1.64	-6.09	-10.06	-1.44
Anglo American Plat Ltd	57058	57770	-1.23	-5.05	-7.51	-40.81
Anglogold Ashanti Ltd	47958	50860	-5.71	-6.70	-9.90	35.70
Anheuser-Busch InBev SA NV	114943	114077	0.76	3.93	3.13	-4.23
BHP Group Limited	45762	46126	-0.79	-2.03	-6.38	-27.76
BID Corporation Ltd	44675	44526	0.33	-1.06	4.63	4.71
British American Tob plc	69560	69436	0.18	2.93	6.27	28.46
Compagnie Fin Richemont	250610	251852	-0.49	-10.53	-6.01	-2.40
Capitec Bank Hldgs Ltd	300595	295425	1.75	4.01	8.64	48.34
Discovery Ltd	15011	15049	-0.25	-0.34	6.81	4.48
Firststrand Ltd	8689	8536	1.79	2.86	8.95	18.20
Gold Fields Ltd	24044	24051	-0.03	-3.01	-17.33	-13.44
Glencore plc	8535	8651	-1.34	-5.16	-9.20	-23.56
Impala Platinum Hlgs Ltd	7350	7137	2.98	-5.79	-10.91	-19.47
Kumba Iron Ore Ltd	32332	32089	0.76	-0.35	-16.14	-47.41
Mondi plc	33450	33564	-0.34	-2.02	-0.76	-7.85
MTN Group Ltd	9243	9155	0.96	7.35	11.28	-19.97
Naspers Ltd -N-	353081	354928	-0.52	-3.06	-1.60	12.88
Prosus N.V.	63635	64171	-0.84	-3.98	-1.25	13.55
South32 Limited	3560	3555	0.14	-1.25	3.13	-15.62
Standard Bank Group Ltd	23726	23408	1.36	0.92	9.50	14.01
Shoprite Holdings Ltd	30000	29764	0.79	1.69	3.49	9.07
Sanlam Limited	8522	8440	0.97	0.18	7.56	17.06
Sasol Limited	12221	12400	-1.44	-4.13	-6.16	-34.04
Sibanye Stillwater Ltd	1489	1522	-2.17	-6.82	-16.82	-40.20
Vodacom Group Ltd	11157	11088	0.62	1.27	11.74	5.25

SOUTH AFRICAN MARKET SUMMARY

SELECTED ITEMS

The Johannesburg Stock Exchange's Top-40 index closed up by 0.1%. Despite strong demand at a South African government bond auction and a 1.7% year-on-year rise in July manufacturing output, the rand saw little support. Old Mutual, a JSE-listed financial services group, expects its headline earnings per share for the first half of 2024 to increase by 33% to 43% compared to 2023. Meanwhile, real estate investment trust Attacq reported a 19.9% rise in distributable income per share for the year ending June 30, with its full-year dividend increasing by 19% to 69 cents per share.

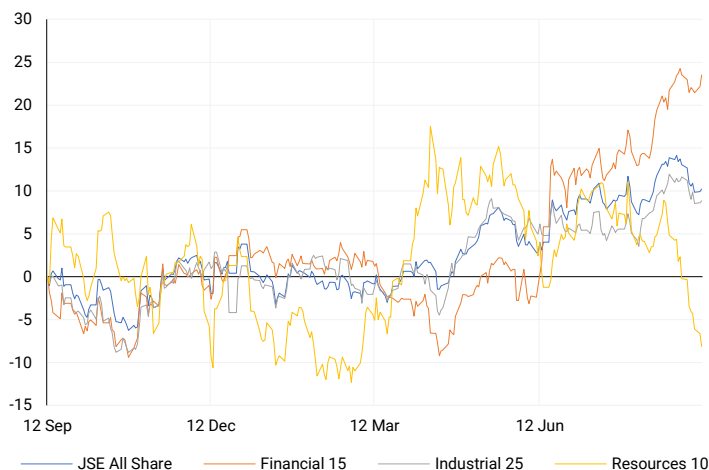
JSE ALL SHARE

One-year



LOCAL INDICES

Normalised percentage performances



EXPECTED COMPANY REPORTING SCHEDULE

COMPANY	CODE	RELEASE	DATE
Super Group	SPG	Final	11 Sep '24
Truworths	TRU	Final	12 Sep '24
Sibanye Stillwater	SSW	Interim	12 Sep '24
Outsurance	OUT	Final	16 Sep '24
Discovery	DSY	Final	20 Sep '24

BANK AND OTHER SELECTE PREFERENCE SHARES

COMPANY	CODE	CLOSE	CLEAN YIELD	NEXT LDT (Est.)
Investec Limited	INPR	8861	11.24	Thu, 06 Jun '24
Standard Bank	SBPP	8680	11.15	Thu, 05 Sep '24
Absa	ABSP	83900	11.48	Thu, 12 Sep '24
Capitec	CPIP	10485	9.69	Thu, 19 Sep '24
Steinhoff	SHFF	9734	10.47	Thu, 17 Oct '24
Grindrod	GNDP	9206	12.22	Thu, 19 Sep '24
Netcare	NTCP	8190	11.82	Thu, 31 Oct '24
Discovery	DSBP	9699	11.91	Thu, 19 Sep '24
Invicta	IVTP	---	13.41	Thu, 27 Jun '24

LOCAL SENS ANNOUNCEMENTS

SELECTED RELEASE

WILSON BAYLY HOLMES – OVCON LIMITED – Audited Financial Statements

Revenue from continuing operations increased by 16% to R27.5 billion, with operating profit up 17.8% to R1.2 billion. Total operating profit rose 30% to R1.2 billion, and earnings per share from continuing operations grew to 1 853 cents. Headline earnings per share from continuing operations increased to 2 021 cents, while the Group's net asset value reached R4.7 billion. The order book stands at R30.6 billion, and a final cash dividend of 230 cents per share was declared for the year ending June 2024, compared to no dividend last year.

WBO | -0.68% OPEN | 20864c HIGH | 20971c LOW | 20246c CLOSE | 20710c TIME | 12:10

BOWLER METCALF LIMITED – Annual Financial Statements

In 2024, the net asset value rose by 10% to R801.9 million. Revenue increased by 20% to R860.9 million, and profit from operations grew by 66% to R120.9 million. Net profit before tax increased by 58% to R146.3 million, while net profit after tax rose by 56% to R107.3 million. Earnings per share jumped 58% to 156.05 cents, with headline earnings up 57% to 161.38 cents. A final dividend of 37.80 cents per share was declared, marking a 54% increase from the previous year's 24.60 cents.

BCF | 5.90% OPEN | 1331c HIGH | 1399c LOW | 1331c CLOSE | 1399c TIME | 17:00

ATTACQ LIMITED – Audited Financial Results

For the year ending 30 June 2024, distributable income per share increased by 19.9% to 86.2 cents, while dividends per share rose 19% to 69.0 cents. Total assets grew by 4.8% to R22.9 billion, and net asset value per share increased slightly by 1.6% to 1 793 cents. Gross revenue rose by 6.9% to R2.6 billion. Earnings per share saw a significant increase of 83.3% to 135.3 cents, although headline earnings per share decreased by 10.9% to 72.7 cents.

ATT | 6.33% OPEN | 1198c HIGH | 1299c LOW | 1195c CLOSE | 1260c TIME | 07:05

OLD MUTUAL LIMITED – Trading Statement

The Group's key profit measures for the six months ending 30 June 2024 are expected to show mixed results. Revenue from operations (RFO) is estimated to range between R4 017 million and R4 453 million, reflecting a change of -8% to 2%, while RFO per share is expected to range between 90.1 and 99.9 cents, with a potential -5% to 5% change. Adjusted headline earnings (AHE) are forecasted to range from R3 097 million to R3 413 million, indicating a possible change of -2% to 8%, and AHE per share (AHEPS) is expected to grow by 2% to 12%. Headline earnings (HE) could rise by 29% to 39%, while headline earnings per share (HEPS) are projected to increase by 33% to 43%, reaching 128.7 to 138.4 cents. IFRS profit is expected to grow by 15% to 25%, with basic earnings per share (EPS) anticipated to rise by 19% to 29%.

OMU | -0.78% OPEN | 1288c HIGH | 1320c LOW | 1234c CLOSE | 1272c TIME | 12:00

LOCAL EQUITIES | JSE MID CAP COMPANIES (Cents Per Share)

COMPANY	CODE	CLOSE	PREVIOUS	1D%	1M%	YTD%
Aspen Pharmacare Hldgs Ltd	APN	19245	19314	-0.36	-17.43	-5.43
African Rainbow Min Ltd	ARI	15312	15588	-1.77	-21.84	-23.44
AVI Ltd	AVI	10500	10429	0.68	6.79	27.94
Barloworld Ltd	BAW	9624	9528	1.01	2.96	21.82
Bidvest Ltd	BVT	27759	27738	0.08	3.81	10.03
Bytes Technology Grp PLC	BYI	10665	10666	-0.01	-1.45	-25.53
Capital&Counties Prop plc	CCO	3540	3505	1.00	5.55	8.92
Clicks Group Ltd	CLS	37543	37026	1.40	6.56	15.27
Dis-Chem Pharmacies Ltd	DCP	3571	3550	0.59	-0.45	16.36
Exxaro Resources Ltd	EXX	15229	15330	-0.66	-17.30	-25.52
Fortress Real Est INV B	FFB	1990	1986	0.20	14.90	38.58
Growthpoint Prop Ltd	GRT	1456	1451	0.34	12.00	24.66
Harmony GM Co Ltd	HAR	15550	15900	-2.20	-10.94	30.03
Hammerson plc	HMN	691	684	1.02	9.16	1.62
Investec Ltd	INL	13327	13230	0.73	-0.91	6.12
Investec plc	INP	13333	13250	0.63	-0.31	5.86
Italtile Ltd	ITE	1270	1233	3.00	11.50	13.39
Life Healthc Grp Hldgs Ltd	LHC	1440	1426	0.98	11.03	-21.61
MultiChoice Group Ltd	MCG	10846	10815	0.29	0.89	33.87
Montauk Renewables Inc	MKR	8000	8100	-1.23	-20.00	-53.49
Mr Price Group Ltd	MRP	23590	22980	2.65	8.21	50.44
Momentum Met Hldgs Ltd	MTM	2780	2781	-0.04	5.30	27.00
Ninety One Plc	N91	3809	3773	0.95	-1.17	-11.67
Nedbank Group Ltd	NED	28450	28287	0.58	1.71	31.57
Northam Platinum Hldgs Ltd	NPH	9071	9037	0.38	-28.72	-35.41
NEPI Rockcastle N.V.	NRP	14820	14784	0.24	6.70	17.27
Netcare Limited	NTC	1346	1341	0.37	5.98	-5.48
Ninety One Limited	NY1	3853	3765	2.34	1.37	-10.33
Old Mutual Limited	OMU	1272	1282	-0.78	6.62	-2.60
OUTsurance Group Ltd	OUT	5067	5040	0.54	8.13	20.07
Pick n Pay Stores Ltd	PIK	2331	2320	0.47	2.28	0.17
Pepkor Holdings Ltd	PPH	2186	2154	1.49	10.85	11.36
Quilter Plc	QLT	3156	3173	-0.54	-3.22	29.98
Redefine Properties Ltd	RDF	493	485	1.65	12.81	28.05
Remgro Ltd	REM	14494	14465	0.20	8.24	-10.80
Resilient REIT Limited	RES	5923	5845	1.33	15.82	33.73
Reinet Investments S.C.A	RNI	49417	48588	1.71	4.22	6.00
Sappi Ltd	SAP	4706	4518	4.16	1.75	6.47
Santam Limited	SNT	36294	35801	1.38	11.09	26.65
The Spar Group Ltd	SPP	12214	12220	-0.05	0.37	3.60
Sirius Real Estate Ltd	SRE	2320	2270	2.20	5.02	4.74
Tiger Brands Ltd	TBS	24163	23595	2.41	8.95	20.04
Transaction Capital Ltd	TCP	266	267	-0.37	-8.59	-66.67
The Foschini Group Limited	TFG	14168	14005	1.16	8.19	27.69
Thungela Resources Ltd	TGA	10710	10772	-0.58	-13.63	-30.36
Telkom SA SOC Ltd	TKG	2731	2738	-0.26	13.56	-8.17
Truworths Int Ltd	TRU	9611	9405	2.19	6.97	29.27
Woolworths Holdings Ltd	WHL	6383	6374	0.14	4.95	-11.59
Zeda Limited	ZZD	1305	1305	0.00	10.13	2.35

LOCAL EQUITIES | JSE SMALL CAP COMPANIES (Cents Per Share)

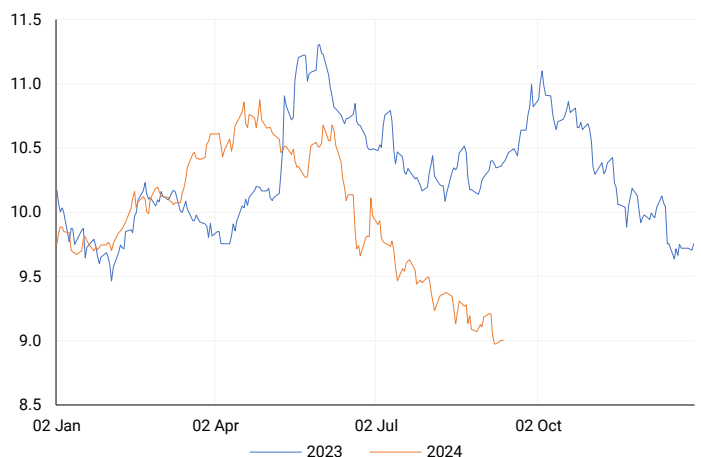
COMPANY	CODE	CLOSE	PREVIOUS	1D%	1M%	YTD%
ArcelorMittal SA Limited	ACL	121	126	-3.97	-6.92	-26.22
ADVTECH Ltd	ADH	3147	3190	-1.35	7.19	28.24
Altron Limited A	AEL	1689	1666	1.38	7.92	64.78
AECI Limited	AFE	10426	10383	0.41	0.73	-4.95
Alexander Forbes Grp Hldgs	AFH	690	682	1.17	3.45	4.55
Afrimat Limited	AFT	6503	6459	0.68	1.39	3.22
African Rainbow Cap Inv	AIL	671	670	0.15	1.21	37.22
Adcock Ingram Hldgs Ltd	AIP	6477	6495	-0.28	13.53	7.77
Astral Foods Ltd	ARL	17600	17100	2.92	4.46	20.08
Attacq Limited	ATT	1260	1185	6.33	12.00	36.66
Brait PLC	BAT	103	104	-0.96	17.05	-43.41
Blue Label Telecoms Ltd	BLU	479	490	-2.24	12.71	23.45
Burstone Group	BTN	915	925	-1.08	15.97	14.38
Coronation Fund Mngrs Ld	CML	3873	3848	0.65	5.13	24.29
Curro Holdings Limited	COH	1295	1275	1.57	7.92	11.16
Cashbuild Ltd	CSB	15969	15700	1.71	7.90	-4.34
DRD Gold Ltd	DRD	1405	1392	0.93	-16.37	-10.91
Datatec Ltd	DTC	3592	3576	0.45	2.02	-11.31
Emira Property Fund Ltd	EMI	1080	1093	-1.19	-2.35	26.32
Equites Prop Fund Ltd	EQU	1410	1401	0.64	6.17	1.08
Famous Brands Ltd	FBR	5652	5655	-0.05	1.75	-2.43
Fairvest Limited B	FTB	443	446	-0.67	5.73	28.78
Grindrod Ltd	GND	1461	1428	2.31	-5.92	27.49
Hosken Cons Inv Ltd	HCI	18598	18430	0.91	1.55	-8.20
Hudaco Industries Ltd	HDC	18598	18418	0.98	2.24	15.78
Hyprop Inv Ltd	HYP	3950	3929	0.53	19.37	26.97
JSE Ltd	JSE	12020	11721	2.55	13.93	30.03
KAP Industrial Hldgs Ltd	KAP	332	334	-0.60	14.88	26.72
Karooooo Ltd	KRO	69198	68001	1.76	4.84	45.68
PSG Konsult Limited	KST	1799	1735	3.69	10.37	17.20
Libstar Holdings Ltd	LBR	428	416	2.88	4.39	22.29
Lighthouse Properties plc	LTE	805	810	-0.62	-1.95	9.52
Industrials REIT Limited	MLI	1.8	1.8	0.00	0.00	157.14
MAS P.L.C	MSP	1725	1740	-0.86	-1.48	-0.35
Metair Investments Ltd	MTA	1487	1461	1.78	15.00	-16.23
Motus Holdings Ltd	MTH	11704	11534	1.47	12.76	15.31
Murray & Roberts Hldgs	MUR	269	263	2.28	-13.23	80.54
Oceana Group Ltd	OCE	6690	6660	0.45	-4.96	-5.33
Omnia Holdings Ltd	OMN	6211	6240	-0.46	-4.30	-4.99
Pan African Resource plc	PAN	692	687	0.73	6.46	69.19
PPC Limited	PPC	401	382	4.97	1.01	0.50
Raubex Group Ltd	RBX	5094	5037	1.13	19.44	83.77
RFG Holdings Limited	RFG	1700	1598	6.38	12.21	25.93
Reunert Ltd	RLO	7580	7540	0.53	5.50	26.46
SA Corp Real Estate Ltd	SAC	295	289	2.08	10.07	27.16
Super Group Ltd	SPG	2764	2762	0.07	-6.43	-7.09
Stor-Age Prop REIT Ltd	SSS	1476	1463	0.89	10.56	13.02
Southern Sun LTD	SSU	663	666	-0.45	7.63	26.29
Sun International Ltd	SUI	4421	4472	-1.14	14.77	7.83
Tharisa plc	THA	1700	1745	-2.58	-9.38	12.51
Tsogo Sun Gaming Ltd	TSG	1203	1205	-0.17	7.12	-1.80
Vukile Property Fund Ltd	VKE	1765	1782	-0.95	5.06	25.00
Wilson Bayly Hlm-Ovc Ltd	WBO	20710	20852	-0.68	14.21	59.23

10-YEAR BOND YIELD | SELECTED ITEMS (Basis Point Change)

REGION	YIELD	1D	1M	1Y
United States	3.63%	-7	-31	--
United Kingdom	3.82%	-4	-13	-60
Germany	2.13%	-4	-9	-48
Japan	0.85%	-3	2	--
South African 10Y	9.02%	-1	-35	-138

SOUTH AFRICAN 10-YEAR

2023 vs 2024 to date

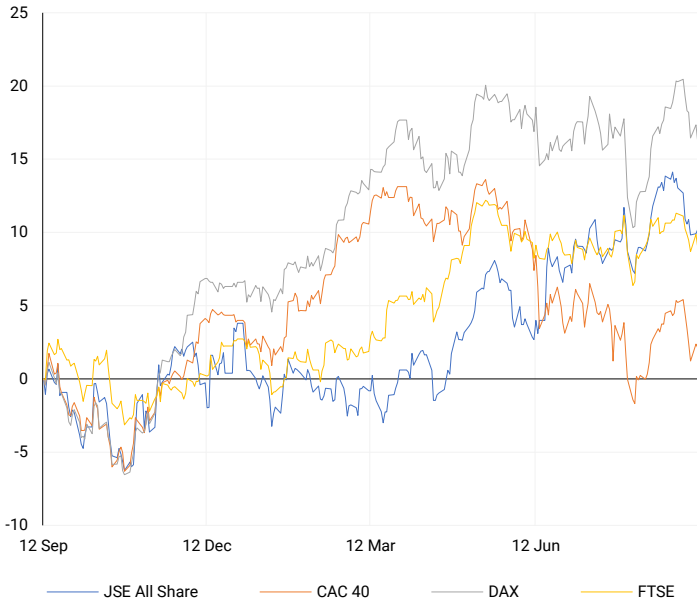


GLOBAL INTEREST RATES | SELECTED ITEMS

REGION	DATE CHANGED	CURRENT RATE
United States	Wed, 26 Jul '23	5.25%-5.50%
United Kingdom	Thu, 03 Aug '23	5.25%
European	Thu, 27 Jul '23	4.25%
SA Repo Rate	Thu, 25 May '23	8.25%
SA Prime Rate	Thu, 25 May '23	11.75%

EUROPEAN INDICES

Normalised percentage performances



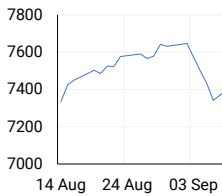
EUROPEAN MARKET SUMMARY

SELECTED ITEMS

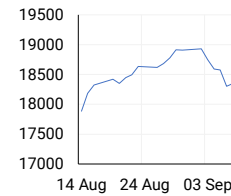
European stock markets mostly declined on Tuesday, driven down by bank and energy stocks as investors remained cautious ahead of a likely interest rate cut by the European Central Bank (ECB) later this week. Markets are expecting a 25 basis-point rate cut, but the future policy direction is still unclear. In the U.K., unemployment fell to 4.1%, while wage growth slowed to 5.1%. Meanwhile, Germany saw its inflation rate drop to 2% in August.

EUROPEAN INDICES	CLOSE	PREVIOUS	1D%	5D%	1M%	YTD%
CAC 40	7407.55	7425.26	-0.24	-2.21	1.90	-1.80
DAX 30	18265.92	18443.56	-0.96	-2.57	3.06	9.04
Eurostoxx 50	4748.50	4771.00	-0.47	-3.31	1.58	5.02
FTSE	8205.98	8270.84	-0.78	-1.11	0.46	6.11

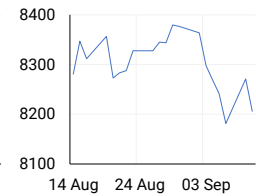
CAC 40



DAX

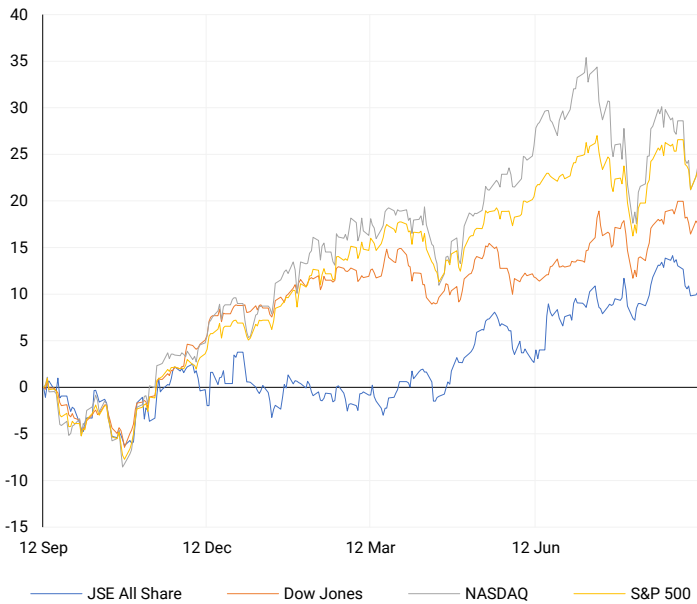


FTSE



AMERICAN INDICES

Normalised percentage performances



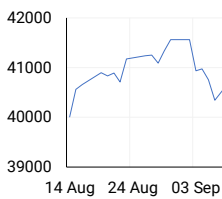
AMERICAN MARKET SUMMARY

SELECTED ITEMS

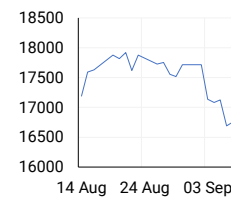
The S&P 500 rose 0.5% on Tuesday, but gains were limited by concerns about slowing economic growth. Bank stocks dropped after Goldman Sachs warned of a 10% fall in trading revenue, and Ally Financial saw its shares plunge 17.6% due to credit challenges. This overshadowed news that the Federal Reserve might ease a proposal to increase big banks' capital. Investors were also worried about lower energy demand and uncertainty around the Fed's interest rate decision next week, along with the upcoming U.S. presidential election. Key inflation reports are due later this week.

AMERICAN INDICES	CLOSE	PREVIOUS	1D%	5D%	1M%	YTD%
Dow Jones	40736.96	40829.59	-0.23	-0.49	3.14	8.09
Nasdaq	17025.88	16884.60	0.84	-0.64	1.68	13.42
S&P 500	5495.52	5471.05	0.45	-0.60	2.83	15.21
US VIX	19.08	19.45	-1.90	-7.92	-6.33	53.25

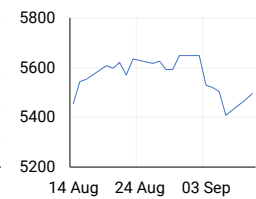
DOW JONES



NASDAQ

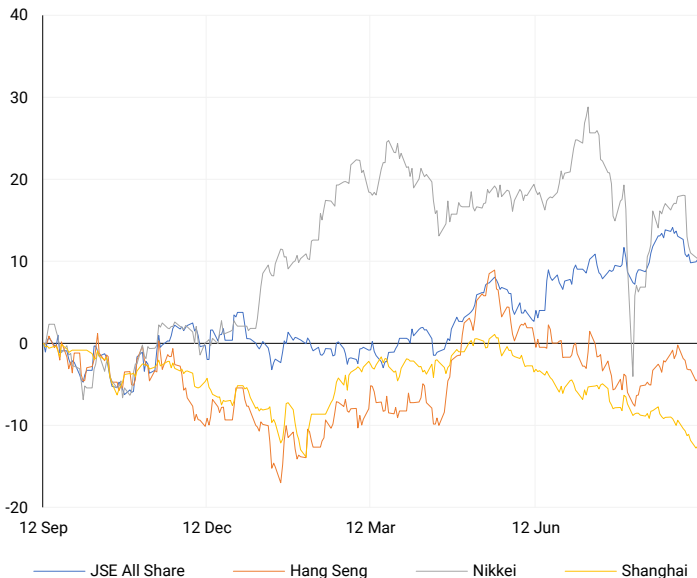


S&P 500



ASIAN INDICES

Normalised percentage performances



ASIAN MARKET SUMMARY

SELECTED ITEMS

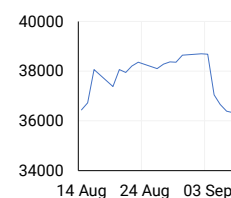
Asia-Pacific markets fell this morning as traders assessed economic data from Japan and South Korea. South Korea's unemployment rate dropped to 2.4% in August, the lowest since 1999. In Japan, the Reuters Tankan survey showed a decline in business confidence among large manufacturers, falling to a seven-month low, while sentiment among non-manufacturers also weakened. Bank of Japan board member Junko Nakagawa indicated the central bank would continue raising interest rates if economic and inflation trends align with their forecasts.

ASIAN INDICES	CLOSE	PREVIOUS	1D%	5D%	1M%	YTD%
Hang Seng	17234.09	17196.96	0.22	-2.36	0.84	1.10
Nikkei 225	36159.16	36215.75	-0.16	-6.53	3.24	8.05
Shanghai	2744.19	2736.49	0.28	-2.10	-4.12	-7.76

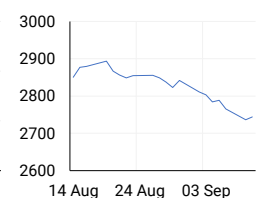
HANG SENG



NIKKEI



SHANGHAI



COMMODITIES MARKET SUMMARY

SELECTED ITEMS

Gold prices remained steady above \$2,500 on Tuesday as traders awaited U.S. inflation data, seeking insight into potential interest rate cuts by the Federal Reserve. Meanwhile, crude oil prices rose this morning, driven by concerns that Tropical Storm Francine could disrupt oil supply, outweighing fears of weakened demand.

COMMODITY	LAST	CLOSE	% CHG	1D%	5D%	YTD%
Brent Crude	69.50	69.69	-0.27	-3.13	-5.39	-9.59
Gold	2520.06	2516.69	0.13	0.41	0.95	21.99
Palladium	979.67	974.76	0.50	2.53	2.85	-11.16
Platinum	945.25	943.26	0.21	0.06	3.84	-4.46
Silver	28.49	28.40	0.32	0.14	1.21	19.39

BRENT CRUDE

One-year



PLATINUM

One-year



GOLD

One-year



CURRENCY PAIR	LAST	CLOSE	% CHG	1D%	5D%	YTD%
USDZAR	17.91	17.95	-0.20	0.38	-0.17	-2.05
GBPZAR	23.46	23.47	-0.03	0.37	-0.44	0.75
EURZAR	19.79	19.78	0.06	0.25	-0.41	-2.05
AUDZAR	11.92	11.94	-0.13	0.23	-1.16	-4.17
EURUSD	1.10	1.10	0.25	-0.15	-0.21	-0.16
USDJPY	140.99	142.45	-1.02	-0.51	-2.08	1.00
GBPUSD	1.31	1.31	0.16	0.04	-0.26	2.74
USDCHF	0.84	0.85	-0.47	-0.26	-0.41	0.64

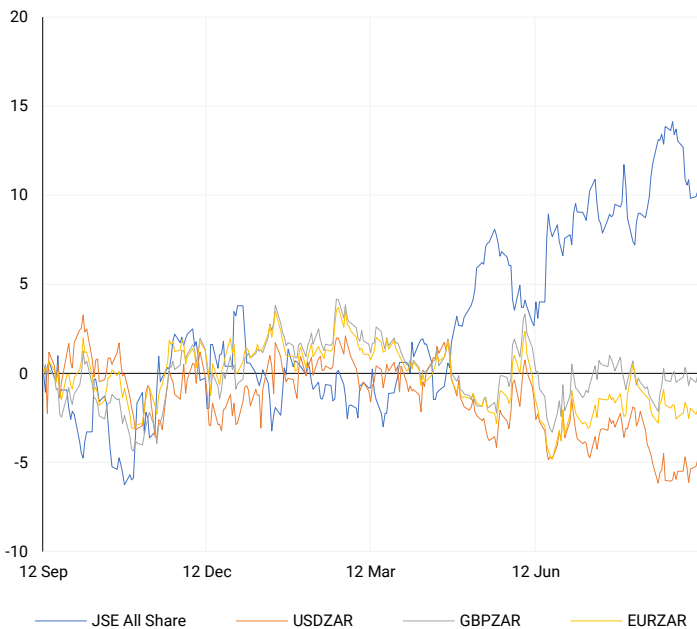
CURRENCY MARKET SUMMARY

SELECTED ITEMS

The South African rand weakened on Tuesday, following other emerging market currencies, as investors awaited U.S. inflation data for hints on the Federal Reserve's interest rate plans. Meanwhile, the U.S. dollar dipped against major currencies on Tuesday after Monday's gains, as traders looked ahead to inflation data and a U.S. presidential debate, though neither event is expected to significantly impact monetary policy.

CURRENCY PAIRS vs JSE ALL SHARE

Normalised percentage performances



USDZAR

One-year



EURUSD

One-year



SOURCES | JSE, IRESS, MONEYWEB, CNBC, BBC, CNN

Disclaimer: This note is prepared for Sanlam Private Wealth (Pty) Ltd, by K2013143132 (Pty) Ltd trading as ThompsonGreen. ThompsonGreen is an independent company contracted to Sanlam Private Wealth (Pty) Ltd. The views expressed in this note are those of ThompsonGreen and/or its analysts and not necessarily the views of Sanlam Private Wealth (Pty) Ltd, Sanlam or any officer or agent thereof. K2013143132 (Pty) Ltd trading as ThompsonGreen is a research house and not a registered broker, financial adviser or financial service provider. Our editors and customer services teams also do not give personal investment advice. The information in this document is general advice only and may not be appropriate to your particular investment objectives, financial situation or particular needs. Before investing, or if you are in any doubt about your personal situation, you should seek professional advice from a stockbroker or independent financial adviser authorised by the Financial Sector Conduct Authority.