

GLOBAL OVERVIEW | SELECTED INDICES

SOUTH AFRICAN INDICES	CLOSE	PREVIOUS	1D%	5D%	1M%	YTD%
All Share	80827.79	81641.90	-1.00	-1.33	0.11	5.12
Top 40	73223.30	74012.68	-1.07	-1.76	-0.68	3.87
Financial 15	20584.77	20928.85	-1.64	-0.47	6.22	15.17
Industrial 25	111018.18	111472.39	-0.41	-0.56	1.52	7.04
Resource 10	51008.73	51629.04	-1.20	-5.41	-12.87	-11.34
Mid Cap	84257.52	85045.91	-0.93	-0.82	-0.60	4.78
Small Cap	85586.16	85847.46	-0.30	0.88	6.43	18.06
Banks	12959.52	13216.65	-1.95	-0.96	6.07	18.37
Retailers	7165.02	7277.03	-1.54	0.45	6.73	14.94
Property (J253) - TR	2392.66	2383.26	0.39	3.75	10.29	28.38

AMERICAN INDICES	CLOSE	PREVIOUS	1D%	5D%	1M%	YTD%
Dow Jones	40861.71	40736.96	0.31	-0.28	3.45	8.42
Nasdaq	17395.53	17025.88	2.17	1.82	3.88	15.88
S&P 500	5554.13	5495.52	1.07	0.62	3.93	16.44
US VIX	17.69	19.08	-7.29	-17.03	-13.16	42.09

EUROPEAN INDICES	CLOSE	PREVIOUS	1D%	5D%	1M%	YTD%
CAC 40	7396.83	7407.55	-0.14	-1.39	1.75	-1.94
DAX 30	18330.27	18265.92	0.35	-1.41	3.43	9.42
Eurostoxx 50	4766.90	4748.50	0.39	-1.76	1.98	5.42
FTSE	8193.94	8205.98	-0.15	-0.91	0.32	5.96

ASIAN INDICES	CLOSE	PREVIOUS	1D%	5D%	1M%	YTD%
Hang Seng	17108.71	17234.09	-0.73	-2.00	0.11	0.36
Nikkei 225	35619.77	36159.16	-1.49	-3.85	1.70	6.44
Shanghai	2721.80	2744.19	-0.82	-2.24	-4.91	-8.51

EARLY MORNING MARKETS	LAST	CLOSE	% CHG	1D%	5D%	YTD%
TENCENT	374.60	370.20	1.19	0.43	-0.70	27.57
BHP AUS	3860.00	3825.00	0.92	1.76	1.81	-19.98

NOTE: 5D% and 1M% are rolling percentage moves

INTERNATIONAL ECONOMIC CALENDAR | SELECTED EVENTS

TIME	AREA	TODAY'S EVENTS & RELEASES	PERIOD	EXP.	PREV.
10:30	ZA	Inflation Expectations	Q3	4.80%	5.00%
11:30	ZA	Gold Production y/y	Jul	-10.00%	-12.60%
11:30	ZA	Mining Production y/y	Jul	1.10%	-3.50%
14:30	US	PPI m/m	Aug	0.10%	0.10%
14:45	EA	ECB Press Conference	---	---	---

TIME	AREA	PREVIOUS SESSION'S RELEASES	PERIOD	EXP.	ACT.
8:00	GB	GDP m/m	Jul	0.20%	0.00%
14:30	US	Core Inflation Rate m/m	Aug	0.30%	0.30%
14:30	US	Inflation Rate m/m	Aug	0.20%	0.20%
---	---	---	---	---	---
---	---	---	---	---	---

JSE ALL SHARE | BEST AND WORST ONE-DAY PERFORMERS

BEST ONE-DAY % PERFORMERS	CODE	CLOSE	1D%	5D%	YTD%
Brait PLC	BAT	111	7.77	6.73	-39.01
Attacq Limited	ATT	1307	3.73	13.95	41.76
Hyprop Inv Ltd	HYP	4090	3.54	7.57	31.47
Kumba Iron Ore Ltd	KIO	33260	2.87	2.34	-45.90
Emira Property Fund Ltd	EMI	1106	2.41	4.34	29.36
MAS P.L.C	MSP	1750	1.45	2.64	1.10

WORST ONE-DAY % PERFORMERS	CODE	CLOSE	1D%	5D%	YTD%
Anglo American Plat Ltd	AMS	50695	-11.15	-15.63	-47.41
Italtile Ltd	ITE	1177	-7.32	-5.76	5.09
Super Group Ltd	SPG	2580	-6.66	-7.13	-13.28
Coronation Fund Mngrs Ld	CML	3648	-5.81	-5.44	17.07
Sibanye Stillwater Ltd	SSW	1410	-5.31	-12.96	-43.37

DIVIDEND DATA

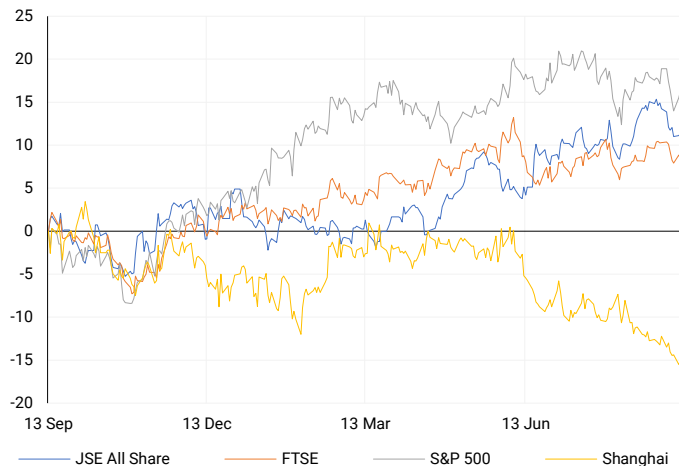
COMPANY	CODE	EXPECTED DIVIDEND	COMPANY	CODE	EXPECTED DIVIDEND
Adcock Ingram Holdings	AIP	150 ZARc	Northam Platinum	NPH	70 ZARc
Aspen Pharmacare	APN	359 ZARc	PPC	PPC	33.5 ZARc
Compagnie Fin. Richemont SA	CFR	275 CHF	Santam	SNT	535 ZARc
Grindrod	GND	23 ZARc	South32	S32	3.1 USDc
NEPI Rockcastle NV	NRP	27.11 EURc	Thungela Resources	TGA	200 ZARc

SOURCES | JSE, IRESS, MONEYWEB, CNBC, BBC, CNN

PLEASE SEE THE BOTTOM OF THE LAST PAGE FOR THE FULL DISCLAIMER

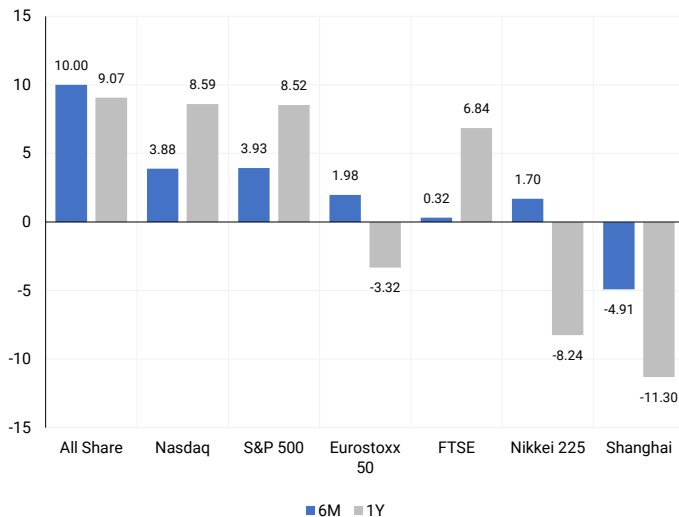
INTERNATIONAL INDICES

Normalised percentage performances - In rand terms



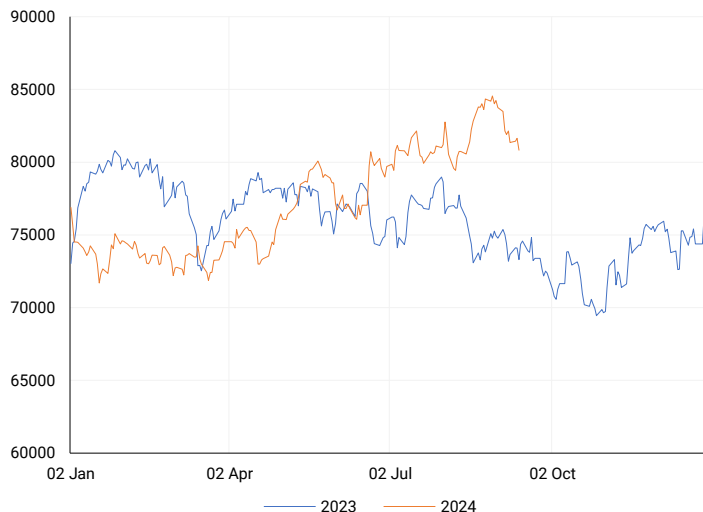
INTERNATIONAL INDICES

6-month & 1-year percentage performances



JSE ALL SHARE INDEX

2023 v 2024 to date



Last date to trade Tue, 17 September

LOCAL EQUITIES | JSE LARGE CAP COMPANIES (Cents Per Share)

COMPANY	CLOSE	PREVIOUS	1D%	5D%	1M%	YTD%
Absa Group Limited	16474	17325	-4.91	-4.47	8.72	0.63
Anglo American plc	46859	46669	0.41	-5.34	-9.70	-1.03
Anglo American Plat Ltd	50695	57058	-11.15	-15.63	-17.83	-47.41
Anglogold Ashanti Ltd	48257	47958	0.62	-5.77	-9.34	36.55
Anheuser-Busch InBev SA NV	115506	114943	0.49	3.16	3.64	-3.76
BHP Group Limited	44970	45762	-1.73	-3.88	-8.00	-29.01
BID Corporation Ltd	44580	44675	-0.21	-1.59	4.40	4.49
British American Tob plc	69415	69560	-0.21	2.45	6.05	28.19
Compagnie Fin Richemont	250406	250610	-0.08	-4.35	-6.09	-2.48
Capitec Bank Hldgs Ltd	300595	300595	0.00	3.78	8.64	48.34
Discovery Ltd	14846	15011	-1.10	-0.47	5.64	3.33
Firststrand Ltd	8562	8689	-1.46	0.47	7.36	16.47
Gold Fields Ltd	23500	24044	-2.26	-3.58	-19.20	-15.40
Glencore plc	8461	8535	-0.87	-5.25	-9.99	-24.22
Impala Platinum Hlgs Ltd	7274	7350	-1.03	-3.30	-11.83	-20.30
Kumba Iron Ore Ltd	33260	32332	2.87	2.34	-13.73	-45.90
Mondi plc	32897	33450	-1.65	-2.32	-2.40	-9.37
MTN Group Ltd	9200	9243	-0.47	5.05	10.76	-20.35
Naspers Ltd -N-	352286	353081	-0.23	-2.14	-1.83	12.62
Prosus N.V.	63795	63635	0.25	-3.21	-1.00	13.84
South32 Limited	3529	3560	-0.87	-1.53	2.23	-16.35
Standard Bank Group Ltd	22790	23726	-3.95	-4.42	5.18	9.51
Shoprite Holdings Ltd	29677	30000	-1.08	-0.25	2.38	7.90
Sanlam Limited	8461	8522	-0.72	-0.27	6.79	16.22
Sasol Limited	11670	12221	-4.51	-9.30	-10.39	-37.02
Sibanye Stillwater Ltd	1410	1489	-5.31	-12.96	-21.23	-43.37
Vodacom Group Ltd	11030	11157	-1.14	0.23	10.47	4.06

SOUTH AFRICAN MARKET SUMMARY

SELECTED ITEMS

On the Johannesburg Stock Exchange, the Top-40 index dropped over 1%. Upcoming July mining data is expected to show year-on-year growth after a June decline, reflecting volatile conditions in South Africa. Growthpoint Properties, the largest primary-listed real estate investment trust in South Africa, warned that global high interest rates would continue to pressure its distributable income per share, which is expected to drop by up to 5% for FY 2024. Super Group Limited reported a 4.6% revenue increase to R64.90 billion for the year ended 30 June 2024.

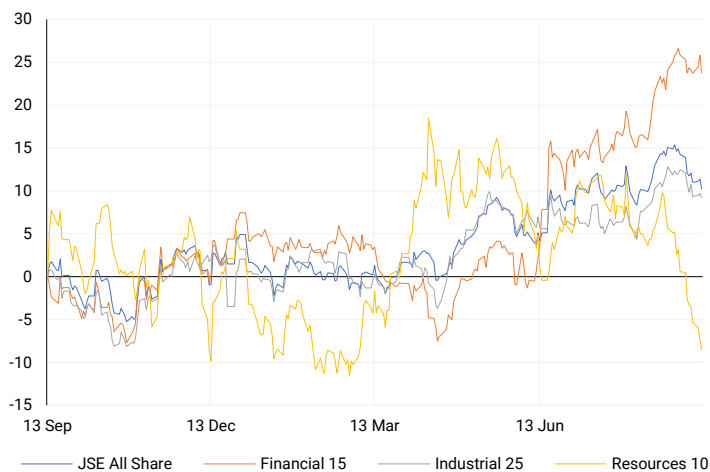
JSE ALL SHARE

One-year



LOCAL INDICES

Normalised percentage performances



EXPECTED COMPANY REPORTING SCHEDULE

COMPANY	CODE	RELEASE	DATE
Truworths	TRU	Final	12 Sep '24
Sibanye Stillwater	SSW	Interim	12 Sep '24
Growthpoint Properties	GRT	Final	13 Sep '24
Outsurance	OUT	Final	16 Sep '24
Discovery	DSY	Final	20 Sep '24

BANK AND OTHER SELECTE PREFERENCE SHARES

COMPANY	CODE	CLOSE	CLEAN YIELD	NEXT LDT (Est.)
Investec Limited	INPR	8850	11.24	Thu, 06 Jun '24
Standard Bank	SBPP	8702	11.15	Thu, 05 Sep '24
Absa	ABSP	80200	11.48	Thu, 12 Sep '24
Capitec	CPIP	10485	9.69	Thu, 19 Sep '24
Steinhoff	SHFF	9734	10.47	Thu, 17 Oct '24
Grindrod	GNDP	9305	12.22	Thu, 19 Sep '24
Netcare	NTCP	8200	11.82	Thu, 31 Oct '24
Discovery	DSBP	9699	11.91	Thu, 19 Sep '24
Invicta	IVTP	---	13.41	Thu, 27 Jun '24

LOCAL SENS ANNOUNCEMENTS

SELECTED RELEASE

HYPROP INVESTMENTS LIMITED – Trading Statement

Hyprop expects its distributable income per share (DIPS) for the year ending 30 June 2024 to be around 370 cents, a drop of 8.7% from the previous year's 405.4 cents. This decrease is smaller than the 15-20% drop forecasted in March 2024, thanks to strong performance in its South African and Eastern European portfolios, as well as lower interest costs. Based on its policy of paying 75% of distributable income as dividends, Hyprop anticipates a dividend of about 280 cents per share for 2024. The full annual results will be released on 17 September 2024.

HYP | 3.54% OPEN | 3934c HIGH | 4100c LOW | 3908c CLOSE | 4090c TIME | 15:00

SUPER GROUP LIMITED – Summarised Financial Results

For the year ended 30 June 2024, revenue increased by 4.6% to R64.90 billion, while EBITDA dropped by 1.4% to R8.45 billion. Operating profit fell by 5.6% to R3.79 billion. Earnings per share plunged by 97.3% to 12.9 cents, and headline earnings per share decreased by 25.9% to 353.8 cents. Operating cash flow declined by 3.4% to R8.57 billion, and the net asset value per share dropped by 7.4% to R42.90.

SPG | -6.66% OPEN | 2760c HIGH | 2761c LOW | 2550c CLOSE | 2580c TIME | 07:05

GROWTHPOINT PROPERTIES LIMITED – Group Audited Annual Results

For the year ending 30 June 2024, total group revenue grew by 4.8% to R14.4 billion, while operating profit fell by 2% to R8.7 billion. Distributable income dropped by 10.3% to R4.813 billion. Funds From Operations (FFO) per share decreased by 11.5% to 131.5 cents. Basic earnings per share declined by 45.9% to 37.49 cents, mainly due to negative adjustments on property, borrowings, and derivatives, and headline earnings per share fell by 32.3% to 101.26 cents.

GRT | -2.27% OPEN | 1445c HIGH | 1450c LOW | 1395c CLOSE | 1423c TIME | 07:05

MUSTEK LIMITED – Trading Statement

Mustek's shareholders are informed that for the year ending 30 June 2024, headline earnings per share are expected to drop by 70% to 80%, falling to between 75.00 and 112.50 cents (compared to 374.99 cents in 2023). Basic earnings per share are expected to decline by 85% to 95%, ranging between 18.63 and 55.89 cents (from 372.61 cents in 2023). However, the net asset value per share is expected to slightly increase to between 2 770 and 2 820 cents, up from 2 724.36 cents in 2023. Financial results will be released on 19 September 2024.

MST | -3.71% OPEN | 1201c HIGH | 1299c LOW | 1201c CLOSE | 1299c TIME | 08:00

LOCAL EQUITIES | JSE MID CAP COMPANIES (Cents Per Share)

COMPANY	CODE	CLOSE	PREVIOUS	1D%	1M%	YTD%
Aspen Pharmacare Hldgs Ltd	APN	19155	19245	-0.47	-17.82	-5.87
African Rainbow Min Ltd	ARI	15347	15312	0.23	-21.66	-23.27
AVI Ltd	AVI	10466	10500	-0.32	6.45	27.53
Barloworld Ltd	BAW	9342	9624	-2.93	-0.05	18.25
Bidvest Ltd	BVT	27778	27759	0.07	3.88	10.10
Bytes Technology Grp PLC	BYI	10332	10665	-3.12	-4.53	-27.85
Capital&Counties Prop plc	CCO	3516	3540	-0.68	4.83	8.18
Clicks Group Ltd	CLS	37533	37543	-0.03	6.53	15.23
Dis-Chem Pharmacies Ltd	DCP	3540	3571	-0.87	-1.31	15.35
Exxaro Resources Ltd	EXX	15200	15229	-0.19	-17.45	-25.67
Fortress Real Est INV B	FFB	2012	1990	1.11	16.17	40.11
Growthpoint Prop Ltd	GRT	1423	1456	-2.27	9.46	21.83
Harmony GM Co Ltd	HAR	15427	15550	-0.79	-11.65	29.00
Hammerson plc	HMN	688	691	-0.43	8.69	1.18
Investec Ltd	INL	13349	13327	0.17	-0.75	6.29
Investec plc	INP	13310	13333	-0.17	-0.48	5.68
Italtile Ltd	ITE	1177	1270	-7.32	3.34	5.09
Life Healthc Grp Hldgs Ltd	LHC	1437	1440	-0.21	10.79	-21.77
MultiChoice Group Ltd	MCG	10876	10846	0.28	1.17	34.24
Montauk Renewables Inc	MKR	8000	8000	0.00	-20.00	-53.49
Mr Price Group Ltd	MRP	23739	23590	0.63	8.89	51.39
Momentum Met Hldgs Ltd	MTM	2759	2780	-0.76	4.51	26.04
Ninety One Plc	N91	3700	3809	-2.86	-4.00	-14.19
Nedbank Group Ltd	NED	28299	28450	-0.53	1.17	30.87
Northam Platinum Hldgs Ltd	NPH	8997	9071	-0.82	-29.30	-35.93
NEPI Rockcastle N.V.	NRP	14846	14820	0.18	6.88	17.47
Netcare Limited	NTC	1351	1346	0.37	6.38	-5.13
Ninety One Limited	NY1	3760	3853	-2.41	-1.08	-12.50
Old Mutual Limited	OMU	1241	1272	-2.44	4.02	-4.98
OUTsurance Group Ltd	OUT	5045	5067	-0.43	7.66	19.55
Pick n Pay Stores Ltd	PIK	2336	2331	0.21	2.50	0.39
Pepkor Holdings Ltd	PPH	2130	2186	-2.56	8.01	8.51
Quilter Plc	QLT	3079	3156	-2.44	-5.58	26.81
Redefine Properties Ltd	RDF	499	493	1.22	14.19	29.61
Remgro Ltd	REM	14418	14494	-0.52	7.67	-11.26
Resilient REIT Limited	RES	5915	5923	-0.14	15.66	33.55
Reinet Investments S.C.A	RNI	48083	49417	-2.70	1.41	3.14
Sappi Ltd	SAP	4655	4706	-1.08	0.65	5.32
Santam Limited	SNT	35553	36294	-2.04	8.82	24.06
The Spar Group Ltd	SPP	12320	12214	0.87	1.24	4.50
Sirius Real Estate Ltd	SRE	2312	2320	-0.34	4.66	4.38
Tiger Brands Ltd	TBS	23827	24163	-1.39	7.44	18.37
Transaction Capital Ltd	TCP	254	266	-4.51	-12.71	-68.17
The Foschini Group Limited	TFG	13863	14168	-2.15	5.86	24.94
Thungela Resources Ltd	TGA	10446	10710	-2.46	-15.76	-32.08
Telkom SA SOC Ltd	TKG	2723	2731	-0.29	13.22	-8.44
Truworths Int Ltd	TRU	9403	9611	-2.16	4.65	26.47
Woolworths Holdings Ltd	WHL	6255	6383	-2.01	2.84	-13.37
Zeda Limited	ZZD	1305	1305	0.00	10.13	2.35

LOCAL EQUITIES | JSE SMALL CAP COMPANIES (Cents Per Share)

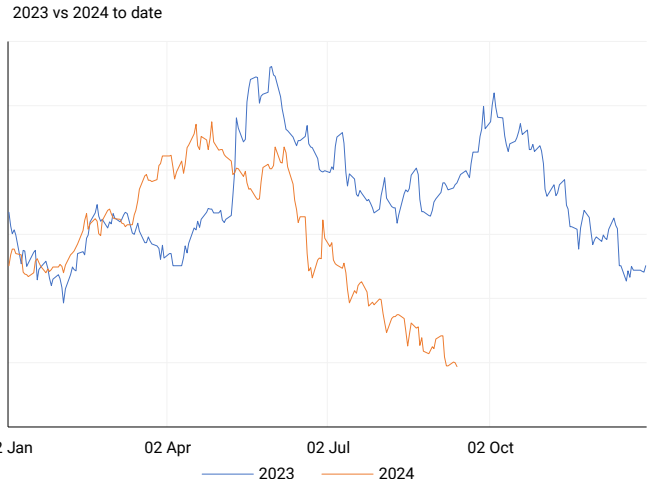
COMPANY	CODE	CLOSE	PREVIOUS	1D%	1M%	YTD%
ArcelorMittal SA Limited	ACL	120	121	-0.83	-7.69	-26.83
ADVTECH Ltd	ADH	3117	3147	-0.95	6.16	27.02
Altron Limited A	AEL	1700	1689	0.65	8.63	65.85
AECI Limited	AFE	10358	10426	-0.65	0.08	-5.57
Alexander Forbes Grp Hldgs	AFH	682	690	-1.16	2.25	3.33
Afrimat Limited	AFT	6465	6503	-0.58	0.80	2.62
African Rainbow Cap Inv	AIL	676	671	0.75	1.96	38.24
Adcock Ingram Hldgs Ltd	AIP	6556	6477	1.22	14.92	9.08
Astral Foods Ltd	ARL	17700	17600	0.57	5.05	20.76
Attacq Limited	ATT	1307	1260	3.73	16.18	41.76
Brait PLC	BAT	111	103	7.77	26.14	-39.01
Blue Label Telecoms Ltd	BLU	480	479	0.21	12.94	23.71
Burstone Group	BTN	919	915	0.44	16.48	14.88
Coronation Fund Mngrs Ld	CML	3648	3873	-5.81	-0.98	17.07
Curro Holdings Limited	COH	1283	1295	-0.93	6.92	10.13
Cashbuild Ltd	CSB	15800	15969	-1.06	6.76	-5.35
DRD Gold Ltd	DRD	1364	1405	-2.92	-18.81	-13.51
Datatec Ltd	DTC	3557	3592	-0.97	1.02	-12.17
Emira Property Fund Ltd	EMI	1106	1080	2.41	0.00	29.36
Equites Prop Fund Ltd	EQU	1426	1410	1.13	7.38	2.22
Famous Brands Ltd	FBR	5699	5652	0.83	2.59	-1.62
Fairvest Limited B	FTB	444	443	0.23	5.97	29.07
Grindrod Ltd	GND	1481	1461	1.37	-4.64	29.23
Hosken Cons Inv Ltd	HCI	18241	18598	-1.92	-0.40	-9.97
Hudaco Industries Ltd	HDC	18600	18598	0.01	2.25	15.79
Hyprop Inv Ltd	HYP	4090	3950	3.54	23.60	31.47
JSE Ltd	JSE	11900	12020	-1.00	12.80	28.73
KAP Industrial Hldgs Ltd	KAP	327	332	-1.51	13.15	24.81
Karooooo Ltd	KRO	68890	69198	-0.45	4.38	45.03
PSG Konsult Limited	KST	1777	1799	-1.22	9.02	15.77
Libstar Holdings Ltd	LBR	410	428	-4.21	0.00	17.14
Lighthouse Properties plc	LTE	809	805	0.50	-1.46	10.07
Industrials REIT Limited	MLI	2	1.8	11.11	11.11	185.71
MAS P.L.C	MSP	1750	1725	1.45	-0.06	1.10
Metair Investments Ltd	MTA	1501	1487	0.94	16.09	-15.44
Motus Holdings Ltd	MTH	11500	11704	-1.74	10.79	13.30
Murray & Roberts Hldgs	MUR	265	269	-1.49	-14.52	77.85
Oceana Group Ltd	OCE	6666	6690	-0.36	-5.30	-5.67
Omnia Holdings Ltd	OMN	6258	6211	0.76	-3.57	-4.27
Pan African Resource plc	PAN	690	692	-0.29	6.15	68.70
PPC Limited	PPC	395	401	-1.50	-0.50	-1.00
Raubex Group Ltd	RBX	5047	5094	-0.92	18.34	82.07
RFG Holdings Limited	RFG	1617	1700	-4.88	6.73	19.78
Reunert Ltd	RLO	7479	7580	-1.33	4.09	24.77
SA Corp Real Estate Ltd	SAC	298	295	1.02	11.19	28.45
Super Group Ltd	SPG	2580	2764	-6.66	-12.66	-13.28
Stor-Age Prop REIT Ltd	SSS	1482	1476	0.41	11.01	13.48
Southern Sun LTD	SSU	664	663	0.15	7.79	26.48
Sun International Ltd	SUI	4438	4421	0.38	15.21	8.24
Tharisa plc	THA	1701	1700	0.06	-9.33	12.57
Tsogo Sun Gaming Ltd	TSG	1192	1203	-0.91	6.14	-2.69
Vukile Property Fund Ltd	VKE	1790	1765	1.42	6.55	26.77
Wilson Bayly Hlm-Ovc Ltd	WBO	20307	20710	-1.95	11.98	56.14

10-YEAR BOND YIELD | SELECTED ITEMS (Basis Point Change)

REGION	YIELD	1D	1M	1Y
United States	3.66%	2	-28	--
United Kingdom	3.76%	-6	-18	-71
Germany	2.11%	-2	-11	-53
Japan	0.85%	-3	2	--
South African 10Y	9.00%	-2	-36	-140

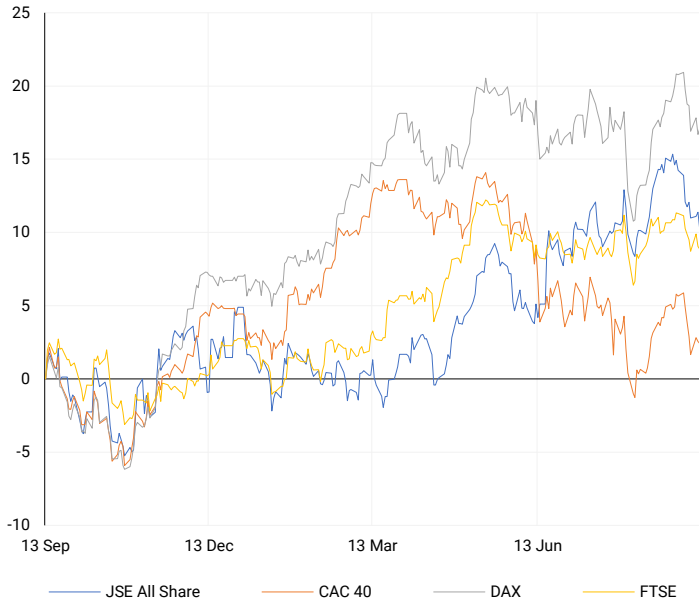
GLOBAL INTEREST RATES | SELECTED ITEMS

REGION	DATE CHANGED	CURRENT RATE
United States	Wed, 26 Jul '23	5.25%-5.50%
United Kingdom	Thu, 03 Aug '23	5.25%
European	Thu, 27 Jul '23	4.25%
SA Repo Rate	Thu, 25 May '23	8.25%
SA Prime Rate	Thu, 25 May '23	11.75%

SOUTH AFRICAN 10-YEAR


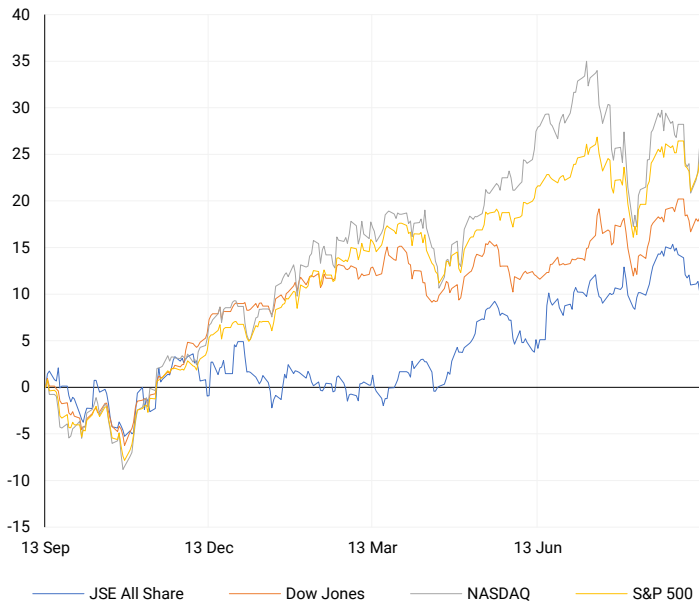
EUROPEAN INDICES

Normalised percentage performances



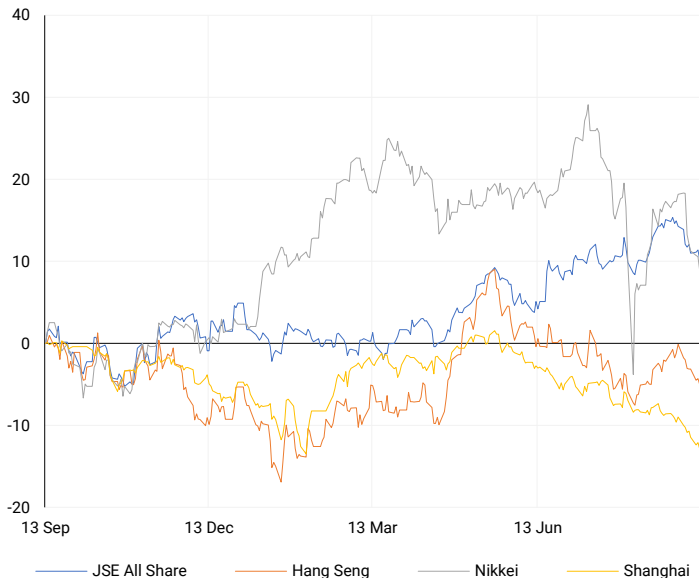
AMERICAN INDICES

Normalised percentage performances



ASIAN INDICES

Normalised percentage performances

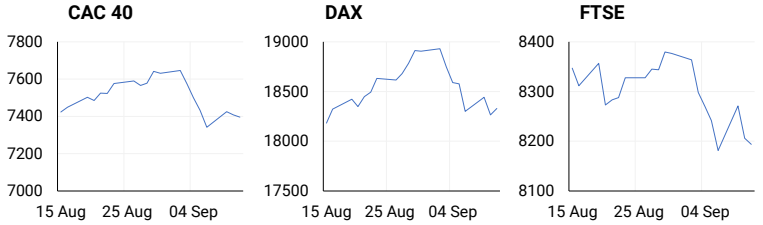


EUROPEAN MARKET SUMMARY

SELECTED ITEMS

European shares closed flat on Wednesday, with gains in technology stocks offset by losses in real estate. Investors are now focusing on the European Central Bank (ECB), which is expected to announce a 25-basis point interest rate cut on Thursday. Meanwhile, new data revealed that the U.K. economy stagnated in July, missing expectations of a 0.2% growth.

EUROPEAN INDICES	CLOSE	PREVIOUS	1D%	5D%	1M%	YTD%
CAC 40	7396.83	7407.55	-0.14	-1.39	1.75	-1.94
DAX 30	18330.27	18265.92	0.35	-1.41	3.43	9.42
Eurostoxx 50	4766.90	4748.50	0.39	-1.76	1.98	5.42
FTSE	8193.94	8205.98	-0.15	-0.91	0.32	5.96



AMERICAN MARKET SUMMARY

SELECTED ITEMS

On Wednesday, all three major U.S. stock indexes closed higher, helped by gains in the technology sector. This came despite an inflation report that dashed hopes for a significant interest rate cut by the Federal Reserve. The political climate also influenced markets following a heated presidential debate between Kamala Harris and Donald Trump. Earlier in the day, the Labor Department reported a 0.2% rise in consumer prices for the month, with core inflation slightly exceeding expectations.

AMERICAN INDICES	CLOSE	PREVIOUS	1D%	5D%	1M%	YTD%
Dow Jones	40861.71	40736.96	0.31	-0.28	3.45	8.42
Nasdaq	17395.53	17025.88	2.17	1.82	3.88	15.88
S&P 500	5554.13	5495.52	1.07	0.62	3.93	16.44
US VIX	17.69	19.08	-7.29	-17.03	-13.16	42.09



ASIAN MARKET SUMMARY

SELECTED ITEMS

Asia-Pacific markets opened higher this morning. Japan's producer price index increased by 2.5% year-on-year in August, which was lower than both the expected 2.8% and July's 3%. This data is closely monitored by the Bank of Japan, which has indicated plans to raise interest rates in the coming months. Investors are also awaiting Hong Kong's second-quarter producer price index, set to be released later today, and India's August consumer price index, expected to rise 3.5% year-on-year, slightly down from July's 3.54%.

ASIAN INDICES	CLOSE	PREVIOUS	1D%	5D%	1M%	YTD%
Hang Seng	17108.71	17234.09	-0.73	-2.00	0.11	0.36
Nikkei 225	35619.77	36159.16	-1.49	-3.85	1.70	6.44
Shanghai	2721.80	2744.19	-0.82	-2.24	-4.91	-8.51



COMMODITIES MARKET SUMMARY

SELECTED ITEMS

Gold prices dropped on Wednesday as a stronger dollar and rising Treasury yields followed U.S. inflation data, leading investors to reduce expectations for a large interest rate cut by the Federal Reserve. Meanwhile, oil prices remained flat this morning, as worries about lower demand offset gains from the previous session, which were driven by Hurricane Francine's impact on U.S. oil production.

COMMODITY	LAST	CLOSE	% CHG	1D%	5D%	YTD%
Brent Crude	71.14	70.70	0.62	1.45	-2.79	-8.28
Gold	2518.46	2511.57	0.27	-0.20	0.64	21.74
Palladium	1024.05	1019.91	0.41	4.63	8.75	-7.05
Platinum	961.89	956.39	0.58	1.39	5.13	-3.13
Silver	28.76	28.69	0.24	1.02	1.45	20.61

BRENT CRUDE

One-year



PLATINUM

One-year



GOLD

One-year



CURRENCY PAIR	LAST	CLOSE	% CHG	1D%	5D%	YTD%
USDZAR	17.89	17.90	-0.08	-0.26	0.20	-2.30
GBPZAR	23.34	23.35	-0.05	-0.52	-0.56	0.23
EURZAR	19.70	19.71	-0.06	-0.31	-0.43	-2.35
AUDZAR	11.97	11.95	0.16	0.08	-0.55	-4.10
EURUSD	1.10	1.10	0.03	-0.07	-0.63	-0.23
USDJPY	142.75	142.37	0.27	-0.06	-0.95	0.94
GBPUSD	1.30	1.30	0.03	-0.29	-0.81	2.44
USDCHF	0.85	0.85	0.12	0.62	0.68	1.27

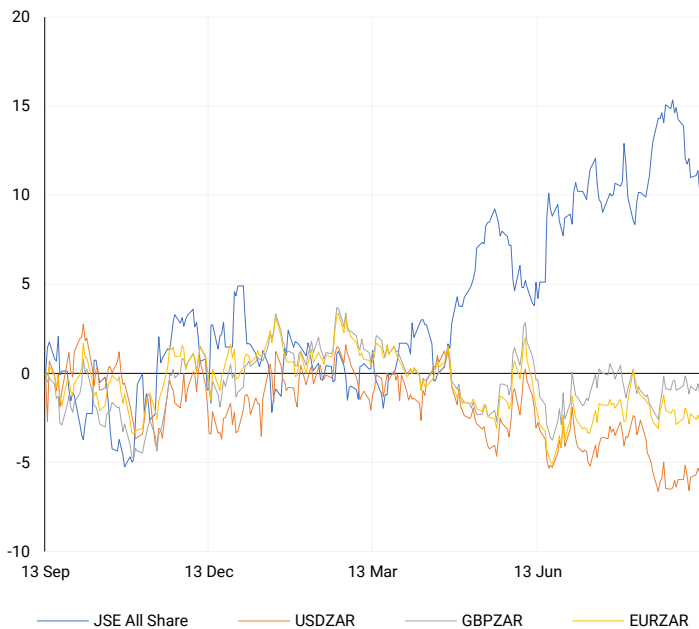
CURRENCY MARKET SUMMARY

SELECTED ITEMS

The South African rand maintained its gains against the dollar on Wednesday following U.S. inflation data, which supported expectations of a smaller 25 basis point rate cut by the Federal Reserve next week. This morning, the dollar hovered near a four-week high against the euro, as persistent U.S. inflation suggested the Fed would refrain from a large interest rate cut.

CURRENCY PAIRS vs JSE ALL SHARE

Normalised percentage performances



USDZAR

One-year



EURUSD

One-year



SOURCES | JSE, IRESS, MONEYWEB, CNBC, BBC, CNN

Disclaimer: This note is prepared for Sanlam Private Wealth (Pty) Ltd, by K2013143132 (Pty) Ltd trading as ThompsonGreen. ThompsonGreen is an independent company contracted to Sanlam Private Wealth (Pty) Ltd. The views expressed in this note are those of ThompsonGreen and/or its analysts and not necessarily the views of Sanlam Private Wealth (Pty) Ltd, Sanlam or any officer or agent thereof. K2013143132 (Pty) Ltd trading as ThompsonGreen is a research house and not a registered broker, financial adviser or financial service provider. Our editors and customer services teams also do not give personal investment advice. The information in this document is general advice only and may not be appropriate to your particular investment objectives, financial situation or particular needs. Before investing, or if you are in any doubt about your personal situation, you should seek professional advice from a stockbroker or independent financial adviser authorised by the Financial Sector Conduct Authority.