

GLOBAL OVERVIEW | SELECTED INDICES

SOUTH AFRICAN INDICES	CLOSE	PREVIOUS	1D%	5D%	1M%	YTD%
All Share	81978.60	81668.39	0.38	0.75	1.26	6.61
Top 40	74367.50	74089.56	0.38	0.67	0.45	5.49
Financial 15	20610.80	20777.67	-0.80	0.15	5.91	15.32
Industrial 25	111180.00	111067.20	0.10	0.02	0.95	7.20
Resource 10	54630.70	53079.48	2.92	3.48	-6.07	-5.04
Mid Cap	86327.40	85686.74	0.75	1.60	1.90	7.35
Small Cap	85660.40	85417.36	0.28	0.50	6.92	18.16
Banks	12918.20	13064.33	-1.12	-0.19	5.12	17.99
Retailers	7227.40	7223.79	0.05	0.72	8.64	15.94
Property (J253) - TR	2373.37	2373.37	0.00	0.76	9.66	27.35

AMERICAN INDICES	CLOSE	PREVIOUS	1D%	5D%	1M%	YTD%
Dow Jones	41393.78	41096.77	0.72	2.60	4.09	9.83
Nasdaq	17683.98	17569.68	0.65	5.95	2.89	17.80
S&P 500	5626.02	5595.76	0.54	4.02	3.53	17.95
US VIX	16.56	17.07	-2.99	-26.01	-8.61	33.01

EUROPEAN INDICES	CLOSE	PREVIOUS	1D%	5D%	1M%	YTD%
CAC 40	7465.25	7435.07	0.41	1.68	2.60	-1.03
DAX 30	18699.40	18518.39	0.98	2.17	4.98	11.63
Eurostoxx 50	4840.00	4809.00	0.64	2.12	3.16	7.04
FTSE	8273.09	8240.97	0.39	1.12	0.46	6.98

ASIAN INDICES	CLOSE	PREVIOUS	1D%	5D%	1M%	YTD%
Hang Seng	17369.09	17240.39	0.75	-0.43	1.14	1.89
Nikkei 225	36581.76	36833.27	-0.68	0.52	0.96	9.32
Shanghai	2704.09	2717.12	-0.48	-2.23	-5.71	-9.10

EARLY MORNING MARKETS	LAST	CLOSE	% CHG	1D%	5D%	YTD%
TENCENT	374.80	374.80	0.00	0.59	0.37	29.15
BHP AUS	3960.00	3960.00	0.00	2.04	5.94	-17.15

NOTE : 5D% and 1M% are rolling percentage moves

INTERNATIONAL ECONOMIC CALENDAR | SELECTED EVENTS

TIME	AREA	TODAY'S EVENTS & RELEASES	PERIOD	EXP.	PREV.
14:30	US	Empire State Manufacturing Index	Sep	-2.00	-4.70
---	---	---	---	---	---
---	---	---	---	---	---
---	---	---	---	---	---
---	---	---	---	---	---

TIME	AREA	PREVIOUS SESSION'S RELEASES	PERIOD	EXP.	ACT.
16:00	US	Michigan Consumer Sentiment Prel	Sep	67.40	69.00
16:00	US	Michigan Inflation Expectations Prel	Sep	2.80%	2.70%
---	---	---	---	---	---
---	---	---	---	---	---
---	---	---	---	---	---

JSE ALL SHARE | BEST AND WORST ONE-DAY PERFORMERS

BEST ONE-DAY % PERFORMERS	CODE	CLOSE	1D%	5D%	YTD%
Impala Platinum Hlgs Ltd	IMP	8652	11.90	15.78	-5.20
Sibanye Stillwater Ltd	SSW	1728	11.56	8.95	-30.60
Northam Platinum Hldgs Ltd	NPH	10077	6.78	7.78	-28.24
Anglo American Plat Ltd	AMS	56810	6.23	-4.37	-41.07
African Rainbow Min Ltd	ARI	17331	5.75	10.19	-13.35
DRD Gold Ltd	DRD	1510	4.64	6.41	-4.25

WORST ONE-DAY % PERFORMERS	CODE	CLOSE	1D%	5D%	YTD%
Barloworld Ltd	BAW	8117	-12.47	-12.52	2.75
Truworths Int Ltd	TRU	9253	-3.09	-0.77	24.45
Firststrand Ltd	FSR	8360	-3.02	-1.42	13.73
RCL Foods Limited	RCL	837	-2.67	-5.96	-1.65
Life Healthc Grp Hldgs Ltd	LHC	1400	-2.44	-2.57	-23.79

DIVIDEND DATA

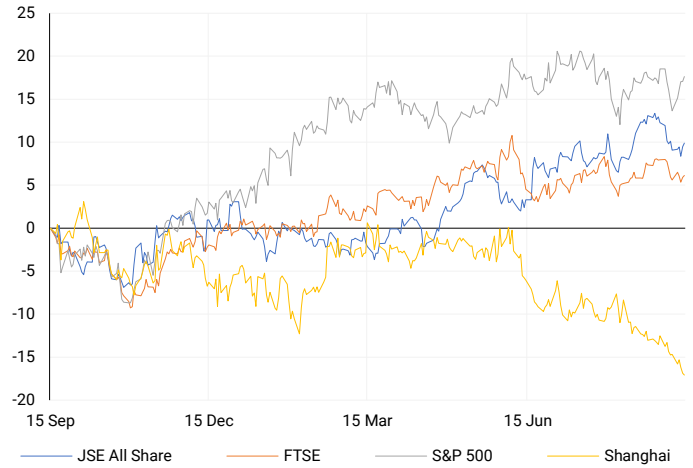
COMPANY	CODE	EXPECTED DIVIDEND	COMPANY	CODE	EXPECTED DIVIDEND
Adcock Ingram Holdings	AIP	150 ZARc	Northam Platinum	NPH	70 ZARc
Aspen Pharmacare	APN	359 ZARc	PPC	PPC	33.5 ZARc
Compagnie Fin. Richemont SA	CFR	275 CHF	Santam	SNT	535 ZARc
Grindrod	GND	23 ZARc	South32	S32	3.1 USDc
NEPI Rockcastle NV	NRP	27.11 EURc	Thungela Resources	TGA	200 ZARc

SOURCES | JSE, IRESS, MONEYWEB, CNBC, BBC, CNN

PLEASE SEE THE BOTTOM OF THE LAST PAGE FOR THE FULL DISCLAIMER

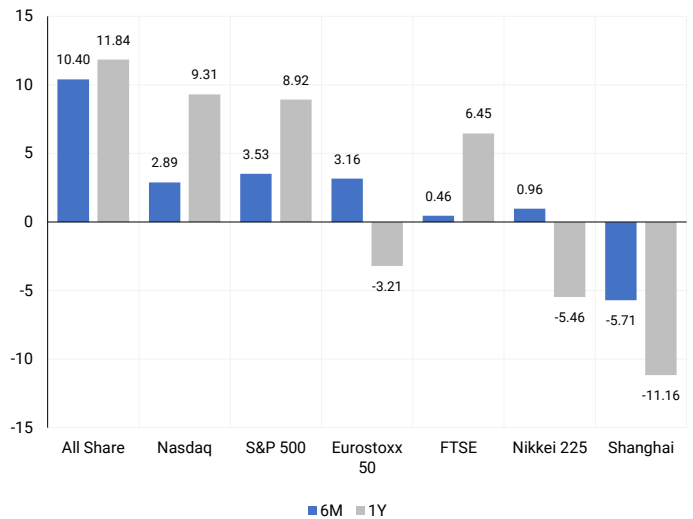
INTERNATIONAL INDICES

Normalised percentage performances - In rand terms



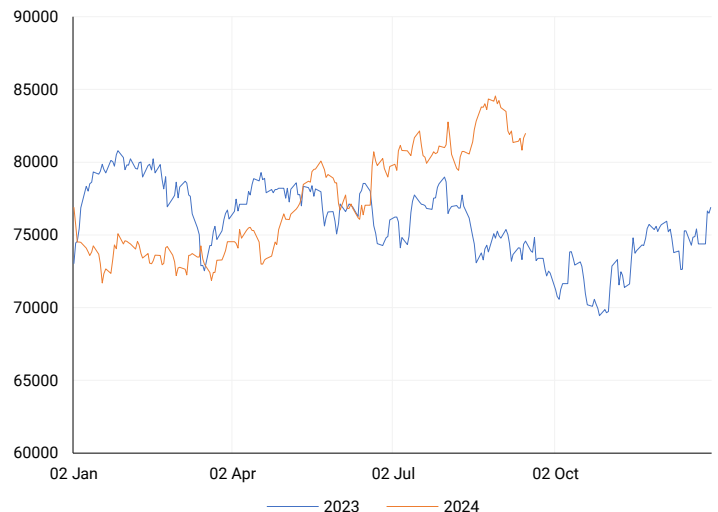
INTERNATIONAL INDICES

6-month & 1-year percentage performances



JSE ALL SHARE INDEX

2023 v 2024 to date



Last date to trade Tue, 17 September

LOCAL EQUITIES | JSE LARGE CAP COMPANIES (Cents Per Share)

COMPANY	CLOSE	PREVIOUS	1D%	5D%	1M%	YTD%
Absa Group Limited	16620	16675	-0.33	-3.02	9.38	1.52
Anglo American plc	48587	47971	1.28	2.07	-5.84	2.61
Anglo American Plat Ltd	56810	53478	6.23	-4.37	-8.08	-41.07
Anglogold Ashanti Ltd	50125	49924	0.40	-2.13	-9.06	41.83
Anheuser-Busch InBev SA NV	114871	115518	-0.56	2.68	5.53	-4.29
BHP Group Limited	46959	46207	1.63	3.01	-2.93	-25.87
BID Corporation Ltd	44895	44296	1.35	0.52	4.74	5.23
British American Tob plc	69029	69100	-0.10	0.86	5.81	27.48
Compagnie Fin Richemont	252561	250000	1.02	-0.21	-6.31	-1.64
Capitec Bank Hldgs Ltd	299259	301500	-0.74	4.03	7.99	47.68
Discovery Ltd	15516	15508	0.05	3.08	9.27	7.99
Firststrand Ltd	8360	8620	-3.02	-1.42	4.16	13.73
Gold Fields Ltd	25139	24450	2.82	5.17	-8.64	-9.50
Glencore plc	8820	8679	1.62	2.25	-6.18	-21.00
Impala Platinum Hlgs Ltd	8652	7732	11.90	15.78	5.41	-5.20
Kumba Iron Ore Ltd	35291	34361	2.71	9.99	-9.08	-42.60
Mondi plc	32908	32994	-0.26	-1.06	-0.73	-9.34
MTN Group Ltd	9375	9275	1.08	1.99	12.50	-18.83
Naspers Ltd -N-	350898	351300	-0.11	-0.77	-4.99	12.18
Prosus N.V.	63619	63359	0.41	-1.06	-4.00	13.53
South32 Limited	3782	3676	2.88	8.37	6.09	-10.36
Standard Bank Group Ltd	23155	22919	1.03	-0.88	6.71	11.27
Shoprite Holdings Ltd	29938	29883	0.18	-0.19	2.50	8.85
Sanlam Limited	8604	8673	-0.80	2.15	7.00	18.19
Sasol Limited	12390	11970	3.51	-2.32	-3.39	-33.13
Sibanye Stillwater Ltd	1728	1549	11.56	8.95	-4.37	-30.60
Vodacom Group Ltd	11186	11064	1.10	1.74	13.23	5.53

SOUTH AFRICAN MARKET SUMMARY

SELECTED ITEMS

On the Johannesburg Stock Exchange, the blue-chip Top-40 index gained around 0.4% by the close. This week, local investors will closely watch the release of August consumer inflation data on September 18, followed by the South African Reserve Bank's (SARB) interest rate announcement on September 19. A Reuters poll of economists suggests the SARB may cut rates by 25 basis points. Meanwhile, HSBC is reportedly in talks to sell its South African corporate banking unit to FirstRand's Rand Merchant Bank as part of its strategy to divest non-core assets.

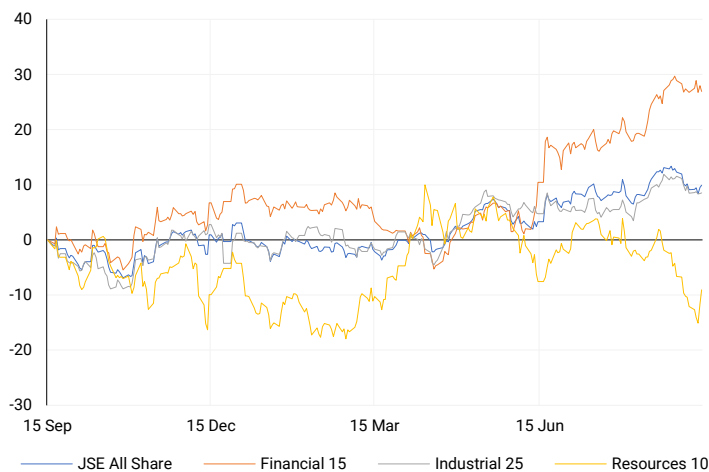
JSE ALL SHARE

One-year



LOCAL INDICES

Normalised percentage performances



EXPECTED COMPANY REPORTING SCHEDULE

COMPANY	CODE	RELEASE	DATE
Outsurance	OUT	Final	17 Sep '24
Clientele	CLI	Final	18 Sep '24
Discovery	DSY	Final	19 Sep '24
Remgro	REM	Final	20 Sep '24
Gemfields	GML	Interim	22 Sep '24

BANK AND OTHER SELECTE PREFERENCE SHARES

COMPANY	CODE	CLOSE	CLEAN YIELD	NEXT LDT (Est.)
Investec Limited	INPR	8815	11.24	Thu, 06 Jun '24
Standard Bank	SBPP	8771	11.15	Thu, 05 Sep '24
Absa	ABSP	80644	11.48	Thu, 12 Sep '24
Capitec	CPIP	10485	9.69	Thu, 19 Sep '24
Steinhoff	SHFF	9734	10.47	Thu, 17 Oct '24
Grindrod	GNDP	9221	12.22	Thu, 19 Sep '24
Netcare	NTCP	8102	11.82	Thu, 31 Oct '24
Discovery	DSBP	9705	11.91	Thu, 19 Sep '24
Invicta	IVTP	---	13.41	Thu, 27 Jun '24

LOCAL SENS ANNOUNCEMENTS

SELECTED RELEASE

SIBANYE STILLWATER LIMITED – Results

For the six months ending June 2024, the group's basic earnings amounted to a loss of R7.472 billion, improving from a loss of R45.195 billion in December 2023, though lower than the R7.423 billion profit in June 2023. Headline earnings were R137 million, recovering from a loss of R4.107 billion in December 2023 but lower than the R5.891 billion earned in June 2023. Adjusted EBITDA reached R6.648 billion, up from R6.409 billion in December 2023 but down from R14.147 billion in June 2023. The average exchange rate for the period was around R18.72 to the US dollar.

SSW | 11.56% OPEN | 1611c HIGH | 1772c LOW | 1611c CLOSE | 1728c TIME | 12:00

SA CORPORATE REAL ESTATE LIMITED – Unaudited Condensed Consolidated Interim Financial Results

For the six months ended June 30, 2024, the Group reported revenue of R1.5 billion, up from R1.1 billion in the same period in 2023. Operating profit increased to R736.3 million from R567.6 million. Headline earnings per share were 14.34 cents, slightly down from the restated 14.42 cents in 2023. Basic earnings per share also declined slightly to 16.33 cents from 16.78 cents in 2023. The net asset value per share rose to 443 cents, compared to 439 cents as of December 2023. A distribution of 12.11 cents per share was declared, maintaining a 90% payout ratio (up from 11.39 cps in 2023).

SAC | 3.39% OPEN | 297c HIGH | 305c LOW | 295c CLOSE | 305c TIME | 17:10

KORE POTASH PLC – Extracts from Financial Report

For the six months ended June 30, 2024, the Group reported interest income of USD 2,894, down significantly from USD 51,348 in the same period in 2023, reflecting a decrease of USD 48,454. The loss for the period widened to USD 528,636, compared to a loss of USD 464,983 in June 2023. Both headline loss per share and basic loss per share remained unchanged at USD 0.01 cents, with no change in diluted loss per share either.

KP2 | 4.08% OPEN | 52c HIGH | 52c LOW | 50c CLOSE | 51c TIME | 08:00

LOCAL EQUITIES | JSE MID CAP COMPANIES (Cents Per Share)

COMPANY	CODE	CLOSE	PREVIOUS	1D%	1M%	YTD%
Aspen Pharmacare Hldgs Ltd	APN	19109	19211	-0.53	-15.99	-6.10
African Rainbow Min Ltd	ARI	17331	16388	5.75	-11.13	-13.35
AVI Ltd	AVI	10466	10516	-0.48	7.90	27.53
Barloworld Ltd	BAW	8117	9273	-12.47	-11.46	2.75
Bidvest Ltd	BVT	27525	27742	-0.78	3.91	9.10
Bytes Technology Grp PLC	BYI	10667	10520	1.40	-3.03	-25.51
Capital&Counties Prop plc	CCO	3547	3498	1.40	5.41	9.14
Clicks Group Ltd	CLS	37243	37903	-1.74	5.20	14.34
Dis-Chem Pharmacies Ltd	DCP	3497	3554	-1.60	-2.04	13.95
Exxaro Resources Ltd	EXX	15511	15384	0.83	-15.08	-24.14
Fortress Real Est INV B	FFB	2012	1990	1.11	16.17	40.11
Growthpoint Prop Ltd	GRT	1405	1387	1.30	7.83	20.29
Harmony GM Co Ltd	HAR	17390	16867	3.10	-4.63	45.41
Hammerson plc	HMN	704	690	2.03	8.47	3.53
Investec Ltd	INL	13380	13632	-1.85	-1.00	6.54
Investec plc	INP	13336	13586	-1.84	-1.12	5.88
Italtile Ltd	ITE	1178	1173	0.43	3.79	5.18
Life Healthc Grp Hldgs Ltd	LHC	1400	1435	-2.44	7.86	-23.79
MultiChoice Group Ltd	MCG	10760	10801	-0.38	1.22	32.81
Montauk Renewables Inc	MKR	8125	8100	0.31	-4.41	-52.76
Mr Price Group Ltd	MRP	23500	23837	-1.41	8.40	49.86
Momentum Met Hldgs Ltd	MTM	2778	2799	-0.75	6.40	26.91
Ninety One Plc	N91	3769	3771	-0.05	-0.24	-12.59
Nedbank Group Ltd	NED	28476	28733	-0.89	-0.59	31.69
Northam Platinum Hldgs Ltd	NPH	10077	9437	6.78	-21.35	-28.24
NEPI Rockcastle N.V.	NRP	15020	14800	1.49	8.46	18.85
Netcare Limited	NTC	1359	1359	0.00	7.86	-4.56
Ninety One Limited	NY1	3800	3805	-0.13	2.01	-11.57
Old Mutual Limited	OMU	1248	1256	-0.64	4.96	-4.44
OUTsurance Group Ltd	OUT	5042	5030	0.24	7.19	19.48
Pick n Pay Stores Ltd	PIK	2301	2281	0.88	0.66	-1.12
Pepkor Holdings Ltd	PPH	2233	2189	2.01	13.18	13.75
Quilter Plc	QLT	3079	3086	-0.23	-7.87	26.81
Redefine Properties Ltd	RDF	499	495	0.81	15.24	29.61
Remgro Ltd	REM	14422	14550	-0.88	8.84	-11.24
Resilient REIT Limited	RES	5928	5873	0.94	14.66	33.85
Reinet Investments S.C.A	RNI	48136	48759	-1.28	3.64	3.25
Sappi Ltd	SAP	4661	4625	0.78	4.53	5.45
Santam Limited	SNT	35700	35500	0.56	6.09	24.58
The Spar Group Ltd	SPP	12450	12172	2.28	3.50	5.60
Sirius Real Estate Ltd	SRE	2342	2329	0.56	5.26	5.73
Tiger Brands Ltd	TBS	24004	24114	-0.46	9.11	19.25
Transaction Capital Ltd	TCP	247	243	1.65	-9.52	-69.05
The Foschini Group Limited	TFG	13935	13703	1.69	8.42	25.59
Thungela Resources Ltd	TGA	10745	10450	2.82	-13.75	-30.14
Telkom SA SOC Ltd	TKG	2737	2730	0.26	17.97	-7.97
Truworths Int Ltd	TRU	9253	9548	-3.09	4.09	24.45
Woolworths Holdings Ltd	WHL	6300	6300	0.00	5.39	-12.74
Zeda Limited	ZZD	1338	1320	1.36	13.49	4.94

LOCAL EQUITIES | JSE SMALL CAP COMPANIES (Cents Per Share)

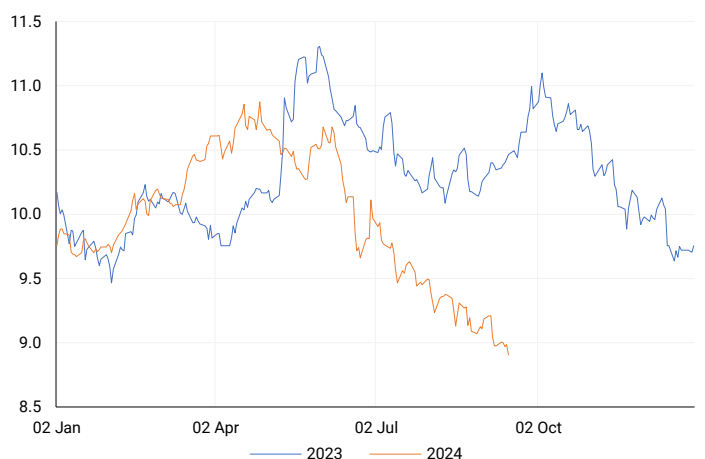
COMPANY	CODE	CLOSE	PREVIOUS	1D%	1M%	YTD%
ArcelorMittal SA Limited	ACL	122	119	2.52	-1.61	-25.61
ADVTECH Ltd	ADH	3081	3076	0.16	2.63	25.55
Altron Limited A	AEL	1719	1675	2.63	4.95	67.71
AECI Limited	AFE	10203	10367	-1.58	-1.42	-6.98
Alexander Forbes Grp Hldgs	AFH	699	691	1.16	6.55	5.91
Afrimat Limited	AFT	6659	6611	0.73	3.55	5.70
African Rainbow Cap Inv	AIL	700	685	2.19	15.70	43.15
Adcock Ingram Hldgs Ltd	AIP	6600	6500	1.54	17.86	9.82
Astral Foods Ltd	ARL	17750	17800	-0.28	5.03	21.10
Attacq Limited	ATT	1316	1293	1.78	19.64	42.73
Brait PLC	BAT	113	112	0.89	31.40	-37.91
Blue Label Telecoms Ltd	BLU	479	475	0.84	12.71	23.45
Burstone Group	BTN	922	912	1.10	18.66	15.25
Coronation Fund Mngrs Ld	CML	3609	3655	-1.26	-2.22	15.82
Curro Holdings Limited	COH	1300	1295	0.39	10.45	11.59
Cashbuild Ltd	CSB	15900	15801	0.63	8.90	-4.75
DRD Gold Ltd	DRD	1510	1443	4.64	-12.31	-4.25
Datatec Ltd	DTC	3530	3584	-1.51	1.82	-12.84
Emira Property Fund Ltd	EMI	1066	1067	-0.09	-2.29	24.68
Equites Prop Fund Ltd	EQU	1417	1415	0.14	8.67	1.58
Famous Brands Ltd	FBR	5534	5625	-1.62	-1.18	-4.47
Fairvest Limited B	FTB	449	444	1.13	7.16	30.52
Grindrod Ltd	GND	1473	1471	0.14	-4.04	28.53
Hosken Cons Inv Ltd	HCI	18156	18194	-0.21	0.13	-10.38
Hudaco Industries Ltd	HDC	18052	18300	-1.36	-1.36	12.38
Hyprop Inv Ltd	HYP	4177	4097	1.95	23.18	34.27
JSE Ltd	JSE	11955	11915	0.34	14.35	29.33
KAP Industrial Hldgs Ltd	KAP	328	333	-1.50	15.09	25.19
Karooooo Ltd	KRO	68500	67900	0.88	7.87	44.21
PSG Konsult Limited	KST	1765	1760	0.28	8.28	14.98
Libstar Holdings Ltd	LBR	420	400	5.00	2.44	20.00
Lighthouse Properties plc	LTE	808	801	0.87	-0.49	9.93
Industrials REIT Limited	MLI	2.6	1.9	36.84	44.44	271.43
MAS P.L.C	MSP	1750	1735	0.86	1.74	1.10
Metair Investments Ltd	MTA	1520	1519	0.07	21.60	-14.37
Motus Holdings Ltd	MTH	11650	11595	0.47	12.29	14.78
Murray & Roberts Hldgs	MUR	267	280	-4.64	-11.00	79.19
Oceana Group Ltd	OCE	6621	6632	-0.17	-6.09	-6.31
Omnia Holdings Ltd	OMN	6234	6263	-0.46	-5.47	-4.64
Pan African Resource plc	PAN	740	713	3.79	11.11	80.93
PPC Limited	PPC	393	395	-0.51	1.29	-1.50
Raubex Group Ltd	RBX	5228	5100	2.51	27.54	88.60
RFG Holdings Limited	RFG	1520	1559	-2.50	1.60	12.59
Reunert Ltd	RLO	7444	7474	-0.40	2.79	24.19
SA Corp Real Estate Ltd	SAC	305	295	3.39	12.96	31.47
Super Group Ltd	SPG	2435	2418	0.70	-5.51	-18.15
Stor-Age Prop REIT Ltd	SSS	1507	1485	1.48	10.40	15.39
Southern Sun LTD	SSU	690	680	1.47	10.22	31.43
Sun International Ltd	SUI	4663	4530	2.94	18.20	13.73
Tharisa plc	THA	1765	1730	2.02	-7.11	16.81
Tsogo Sun Gaming Ltd	TSG	1208	1192	1.34	7.38	-1.39
Vukile Property Fund Ltd	VKE	1842	1794	2.68	11.57	30.45
Wilson Bayly Hlm-Ovc Ltd	WBO	20540	20372	0.82	10.25	57.93

10-YEAR BOND YIELD | SELECTED ITEMS (Basis Point Change)

REGION	YIELD	1D	1M	1Y
United States	3.66%	-1	-18	--
United Kingdom	3.77%	-1	-12	-58
Germany	2.15%	0	-4	-50
Japan	0.83%	-2	0	13
South African 10Y	9.10%	1	-4	-135

SOUTH AFRICAN 10-YEAR

2023 vs 2024 to date

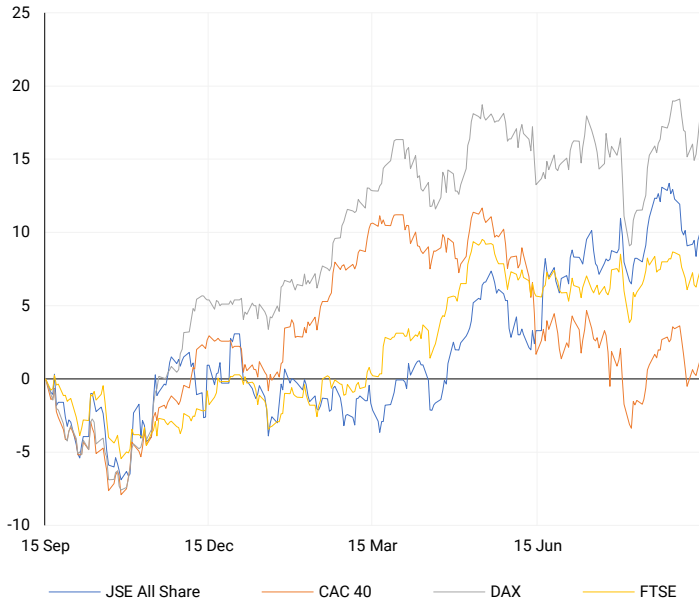


GLOBAL INTEREST RATES | SELECTED ITEMS

REGION	DATE CHANGED	CURRENT RATE
United States	Wed, 26 Jul '23	5.25%-5.50%
United Kingdom	Thu, 03 Aug '23	5.25%
European	Thu, 27 Jul '23	4.25%
SA Repo Rate	Thu, 25 May '23	8.25%
SA Prime Rate	Thu, 25 May '23	11.75%

EUROPEAN INDICES

Normalised percentage performances

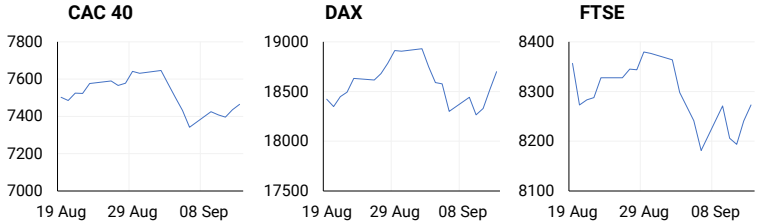


EUROPEAN MARKET SUMMARY

SELECTED ITEMS

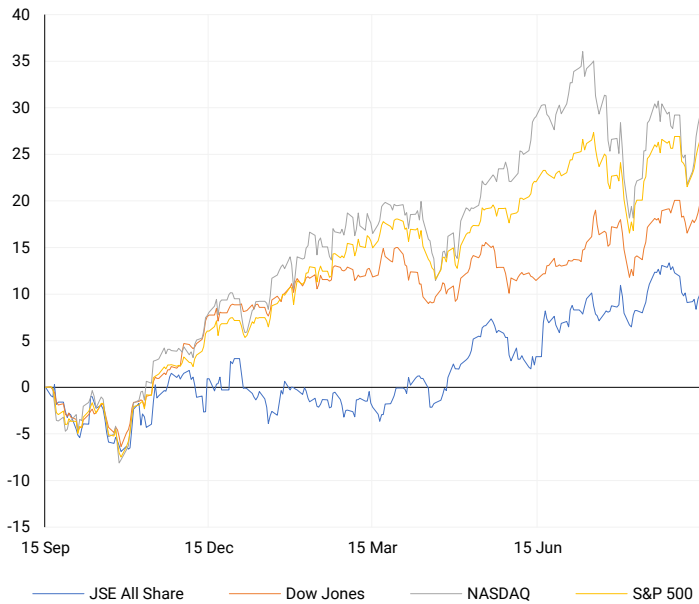
European stocks closed higher on Friday as investors continued to assess the European Central Bank's recent rate cut. Fresh data showed that French inflation eased to 1.8% in August, signalling reduced price pressures in the region. ECB policymakers Francois Villeroy de Galhau and Joachim Nagel expressed optimism about the outlook for lower inflation and interest rates in the eurozone.

EUROPEAN INDICES	CLOSE	PREVIOUS	1D%	5D%	1M%	YTD%
CAC 40	7465.25	7435.07	0.41	1.68	2.60	-1.03
DAX 30	18699.40	18518.39	0.98	2.17	4.98	11.63
Eurostoxx 50	4840.00	4809.00	0.64	2.12	3.16	7.04
FTSE	8273.09	8240.97	0.39	1.12	0.46	6.98



AMERICAN INDICES

Normalised percentage performances



AMERICAN MARKET SUMMARY

SELECTED ITEMS

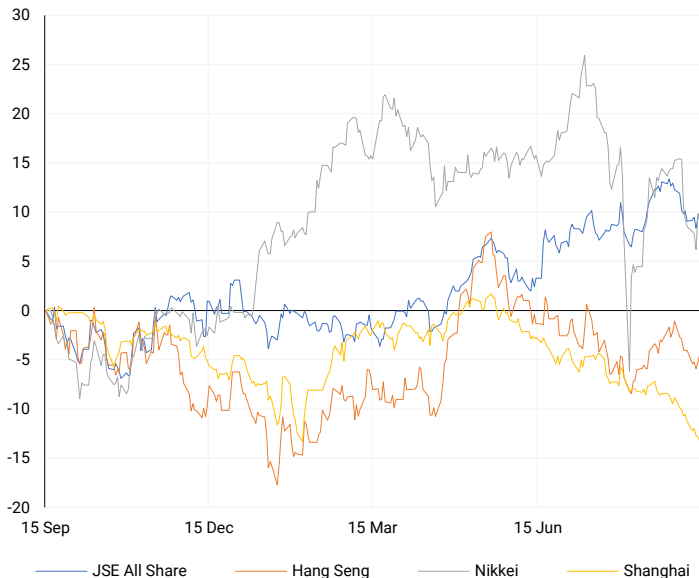
Wall Street's major indexes closed higher on Friday, driven by investor focus on the possibility of a larger interest rate cut from the Federal Reserve next week. Small-cap stocks, which are sensitive to rate changes, outperformed. All three key U.S. benchmarks reached near two-week highs and posted strong weekly gains. Additionally, a survey showed that U.S. consumer sentiment improved in September as inflation eased, though caution remained ahead of the upcoming November presidential election.

AMERICAN INDICES	CLOSE	PREVIOUS	1D%	5D%	1M%	YTD%
Dow Jones	41393.78	41096.77	0.72	2.60	4.09	9.83
Nasdaq	17683.98	17569.68	0.65	5.95	2.89	17.80
S&P 500	5626.02	5595.76	0.54	4.02	3.53	17.95
US VIX	16.56	17.07	-2.99	-26.01	-8.61	33.01



ASIAN INDICES

Normalised percentage performances



ASIAN MARKET SUMMARY

SELECTED ITEMS

Asia-Pacific markets had a mixed performance on Friday, with Chinese markets hitting their lowest levels since 2019, while Australian markets approached an all-time high. Investors in the region are reacting to India's August inflation data, released on Thursday, which showed a 3.65% year-on-year increase in the consumer price index. This rise, up from a five-year low, exceeded both July's revised 3.6% figure and economists' expectations of 3.5%, according to a Reuters poll.

ASIAN INDICES	CLOSE	PREVIOUS	1D%	5D%	1M%	YTD%
Hang Seng	17369.09	17240.39	0.75	-0.43	1.14	1.89
Nikkei 225	36581.76	36833.27	-0.68	0.52	0.96	9.32
Shanghai	2704.09	2717.12	-0.48	-2.23	-5.71	-9.10



COMMODITIES MARKET SUMMARY

SELECTED ITEMS

Following a record-breaking \$2,572.81 per ounce on Friday, gold is poised for its best year since 2020, with a 24% increase fuelled by safe-haven demand amid economic and geopolitical uncertainty, along with robust central bank purchases. Meanwhile, oil prices declined on Friday as crude production in the U.S. Gulf of Mexico resumed following Hurricane Francine, and data revealed a weekly increase in the U.S. rig count.

COMMODITY	LAST	CLOSE	% CHG	1D%	5D%	YTD%
Brent Crude	71.61	72.10	-0.68	-0.10	0.80	-6.46
Gold	2578.24	2578.23	0.00	0.76	3.24	24.97
Palladium	934.50	1070.22	-12.68	1.83	17.03	-2.47
Platinum	941.50	998.55	-5.71	1.59	8.00	1.14
Silver	30.76	30.71	0.16	2.81	9.91	29.10

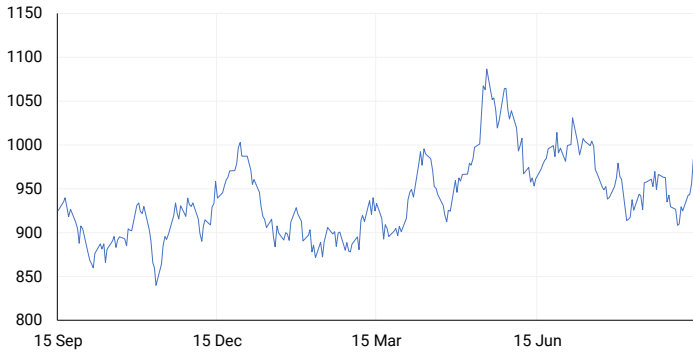
BRENT CRUDE

One-year



PLATINUM

One-year



GOLD

One-year



CURRENCY PAIR	LAST	CLOSE	% CHG	1D%	5D%	YTD%
USDZAR	17.76	17.76	-0.03	-0.09	-0.51	-3.07
GBPZAR	23.31	23.29	0.10	-0.19	-0.64	-0.02
EURZAR	19.67	19.67	0.01	-0.10	-0.61	-2.57
AUDZAR	11.90	11.91	-0.02	-0.39	-0.03	-4.42
EURUSD	1.11	1.11	-0.01	0.01	-0.09	0.35
USDJPY	140.83	140.85	-0.01	-0.69	-1.03	-0.14
GBPUSD	1.31	1.31	-0.01	0.00	-0.04	3.08
USDCHF	0.85	0.85	0.01	-0.23	0.72	0.90

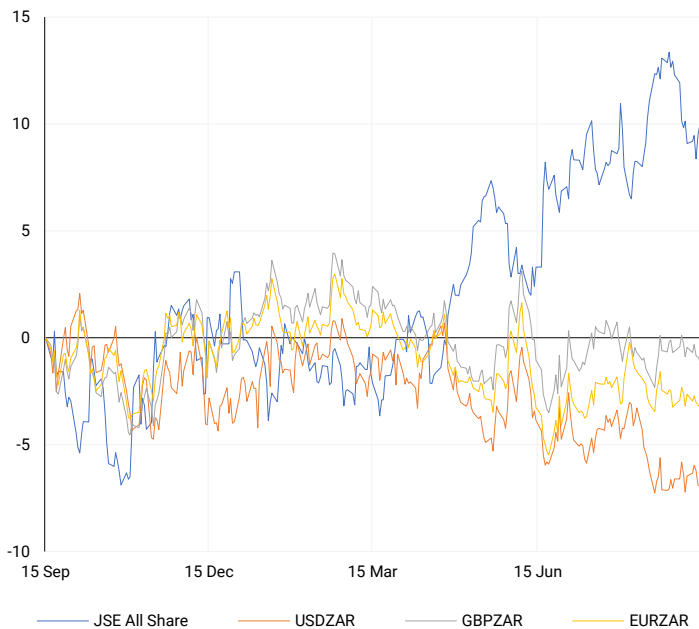
CURRENCY MARKET SUMMARY

SELECTED ITEMS

The South African rand strengthened on Friday, benefiting from a weaker U.S. dollar, as markets speculated on the potential size of a U.S. rate cut expected this week. The U.S. dollar reached its lowest point in nearly nine months against the Japanese yen, following media reports that reignited speculation that the Federal Reserve might implement a larger-than-expected 50 basis point interest rate cut at its upcoming policy meeting.

CURRENCY PAIRS vs JSE ALL SHARE

Normalised percentage performances



USDZAR

One-year



EURUSD

One-year



SOURCES | JSE, IRESS, MONEYWEB, CNBC, BBC, CNN

Disclaimer: This note is prepared for Sanlam Private Wealth (Pty) Ltd, by K2013143132 (Pty) Ltd trading as ThompsonGreen. ThompsonGreen is an independent company contracted to Sanlam Private Wealth (Pty) Ltd. The views expressed in this note are those of ThompsonGreen and/or its analysts and not necessarily the views of Sanlam Private Wealth (Pty) Ltd, Sanlam or any officer or agent thereof. K2013143132 (Pty) Ltd trading as ThompsonGreen is a research house and not a registered broker, financial adviser or financial service provider. Our editors and customer services teams also do not give personal investment advice. The information in this document is general advice only and may not be appropriate to your particular investment objectives, financial situation or particular needs. Before investing, or if you are in any doubt about your personal situation, you should seek professional advice from a stockbroker or independent financial adviser authorised by the Financial Sector Conduct Authority.