

GLOBAL OVERVIEW | SELECTED INDICES

SOUTH AFRICAN INDICES						
	CLOSE	PREVIOUS	1D%	5D%	1M%	YTD%
All Share	82007.30	81978.59	0.04	0.69	-0.99	6.65
Top 40	74282.90	74367.50	-0.11	0.49	-1.88	5.37
Financial 15	20599.40	20610.81	-0.06	-0.48	1.81	15.25
Industrial 25	110676.00	111179.80	-0.45	-0.51	-1.26	6.71
Resource 10	55184.40	54630.70	1.01	5.18	-6.36	-4.08
Mid Cap	87064.30	86327.40	0.85	2.91	-0.05	8.27
Small Cap	86100.30	85660.36	0.51	1.01	4.98	18.77
Banks	12927.90	12918.24	0.07	-0.83	1.09	18.08
Retailers	7289.45	7227.40	0.86	1.67	2.52	16.94
Property (J253) - TR	2405.15	2405.15	0.00	1.52	8.21	29.05
AMERICAN INDICES						
	CLOSE	PREVIOUS	1D%	5D%	1M%	YTD%
Dow Jones	41622.08	41393.78	0.55	1.94	2.37	10.43
Nasdaq	17592.13	17683.98	-0.52	4.19	-0.22	17.19
S&P 500	5633.09	5626.02	0.13	2.96	1.42	18.10
US VIX	17.14	16.56	3.50	-11.88	15.81	37.67
EUROPEAN INDICES						
	CLOSE	PREVIOUS	1D%	5D%	1M%	YTD%
CAC 40	7449.44	7465.25	-0.21	0.33	0.00	-1.24
DAX 30	18633.11	18699.40	-0.35	1.03	1.70	11.23
Eurostoxx 50	4825.30	4843.35	-0.37	1.14	-0.29	6.72
FTSE	8278.44	8273.09	0.06	0.09	-0.40	7.05
ASIAN INDICES						
	CLOSE	PREVIOUS	1D%	5D%	1M%	YTD%
Hang Seng	17422.12	17369.09	0.31	1.31	-0.05	2.20
Nikkei 225	36581.76	36581.76	0.00	1.01	-3.89	9.32
Shanghai	2704.09	2704.09	0.00	-1.18	-6.09	-9.10
EARLY MORNING MARKETS						
	LAST	CLOSE	% CHG	1D%	5D%	YTD%
TENCENT	380.00	377.80	0.58	0.80	1.78	30.19
BHP AUS	3960.00	3955.00	0.13	-0.13	4.96	-17.26

NOTE : 5D% and 1M% are rolling percentage moves

INTERNATIONAL ECONOMIC CALENDAR | SELECTED EVENTS

TIME	AREA	TODAY'S EVENTS & RELEASES	PERIOD	EXP.	PREV.
10:00	ZA	Consumer Confidence	Q3	-10.00	-12.00
11:00	DE	ZEW Economic Sentiment Index	Sep	18.00	19.20
14:30	US	Retail Sales m/m	Aug	0.30%	1.00%
---	---	---	---	---	---
---	---	---	---	---	---
TIME	AREA	PREVIOUS SESSION'S RELEASES	PERIOD	EXP.	ACT.
14:30	US	Empire State Manufacturing Index	Sep	-2.00	11.50
---	---	---	---	---	---
---	---	---	---	---	---
---	---	---	---	---	---
---	---	---	---	---	---

JSE ALL SHARE | BEST AND WORST ONE-DAY PERFORMERS

BEST ONE-DAY % PERFORMERS						
	CODE	CLOSE	1D%	5D%	YTD%	
Life Healthc Grp Hldgs Ltd	LHC	1517	8.36	6.38	-17.42	
PPC Limited	PPC	419	6.62	9.69	5.01	
Sibanye Stillwater Ltd	SSW	1821	5.38	19.65	-26.87	
Transaction Capital Ltd	TCP	260	5.26	-2.62	-67.42	
Impala Platinum Hlgs Ltd	IMP	9102	5.20	27.53	-0.27	
Brait PLC	BAT	118	4.42	13.46	-35.16	
WORST ONE-DAY % PERFORMERS						
	CODE	CLOSE	1D%	5D%	YTD%	
Altron Limited A	AEL	1646	-4.25	-1.20	60.59	
Alexander Forbes Grp Hldgs	AFH	679	-2.86	-0.44	2.88	
Sun International Ltd	SUI	4536	-2.72	1.43	10.63	
Reinet Investments S.C.A	RNI	46889	-2.59	-3.50	0.57	
BID Corporation Ltd	BID	43830	-2.37	-1.56	2.73	

DIVIDEND DATA

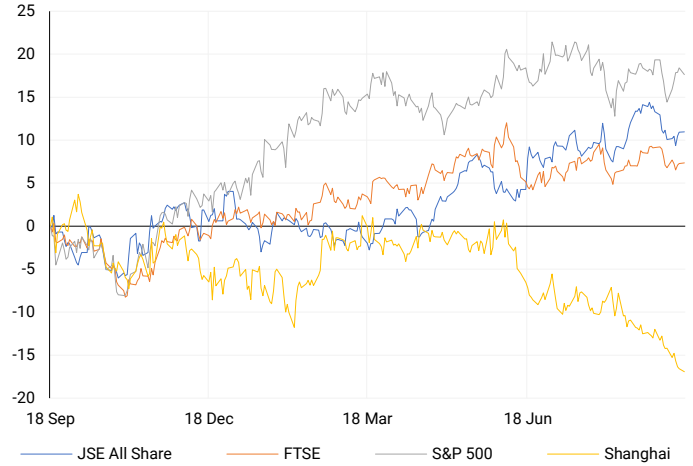
COMPANY	CODE	EXPECTED DIVIDEND	COMPANY	CODE	EXPECTED DIVIDEND
Adcock Ingram Holdings	AIP	150 ZARc	Northam Platinum	NPH	70 ZARc
Aspen Pharmacare	APN	359 ZARc	PPC	PPC	33.5 ZARc
Compagnie Fin. Richemont SA	CFR	275 CHF	Santam	SNT	535 ZARc
Grindrod	GND	23 ZARc	South32	S32	3.1 USDc
NEPI Rockcastle NV	NRP	27.11 EURc	Thungela Resources	TGA	200 ZARc

SOURCES | JSE, IRESS, MONEYWEB, CNBC, BBC, CNN

PLEASE SEE THE BOTTOM OF THE LAST PAGE FOR THE FULL DISCLAIMER

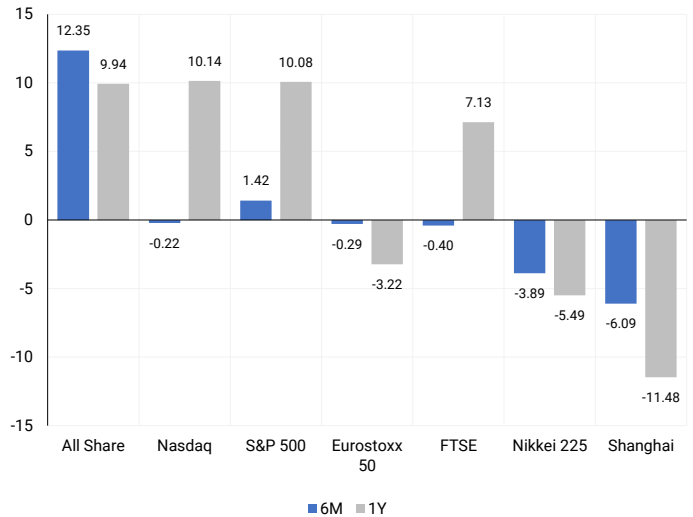
INTERNATIONAL INDICES

Normalised percentage performances - In rand terms



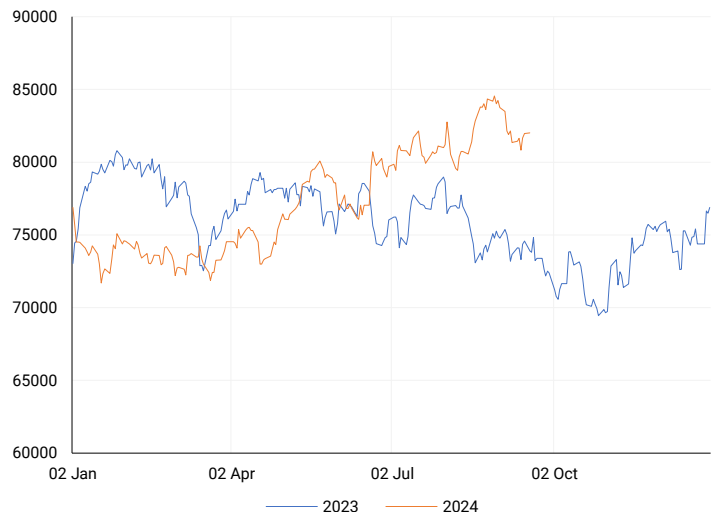
INTERNATIONAL INDICES

6-month & 1-year percentage performances



JSE ALL SHARE INDEX

2023 v 2024 to date



Last date to trade Tue, 17 September

LOCAL EQUITIES | JSE LARGE CAP COMPANIES (Cents Per Share)

COMPANY	CLOSE	PREVIOUS	1D%	5D%	1M%	YTD%
Absa Group Limited	16938	16620	1.91	-1.49	7.37	3.46
Anglo American plc	48680	48587	0.19	2.60	-2.98	2.81
Anglo American Plat Ltd	55681	56810	-1.99	-3.62	-15.51	-42.24
Anglogold Ashanti Ltd	49641	50125	-0.97	-2.40	-10.39	40.46
Anheuser-Busch InBev SA NV	114300	114871	-0.50	0.20	6.01	-4.76
BHP Group Limited	47095	46959	0.29	2.10	-0.02	-25.65
BID Corporation Ltd	43830	44895	-2.37	-1.56	0.50	2.73
British American Tob plc	69337	69029	0.45	-0.14	8.50	28.04
Compagnie Fin Richemont	248268	252561	-1.70	-1.42	-8.96	-3.31
Capitec Bank Hldgs Ltd	298250	299259	-0.34	0.96	5.21	47.19
Discovery Ltd	15499	15516	-0.11	2.99	3.44	7.87
Firststrand Ltd	8272	8360	-1.05	-3.09	-0.27	12.53
Gold Fields Ltd	25590	25139	1.79	6.40	-12.51	-7.88
Glencore plc	8820	8820	0.00	1.95	-5.49	-21.00
Impala Platinum Hlgs Ltd	9102	8652	5.20	27.53	5.70	-0.27
Kumba Iron Ore Ltd	34986	35291	-0.86	9.03	-2.32	-43.09
Mondi plc	32520	32908	-1.18	-3.11	-3.64	-10.41
MTN Group Ltd	9252	9375	-1.31	1.06	4.37	-19.90
Naspers Ltd -N-	347800	350898	-0.88	-2.01	-5.18	11.19
Prosus N.V.	63257	63619	-0.57	-1.42	-3.33	12.88
South32 Limited	3791	3782	0.24	6.64	8.13	-10.14
Standard Bank Group Ltd	23260	23155	0.45	-0.63	-0.67	11.77
Shoprite Holdings Ltd	29794	29938	-0.48	0.10	-2.79	8.32
Sanlam Limited	8565	8604	-0.45	1.48	1.05	17.65
Sasol Limited	12460	12390	0.56	0.48	-8.82	-32.75
Sibanye Stillwater Ltd	1821	1728	5.38	19.65	-0.87	-26.87
Vodacom Group Ltd	11079	11186	-0.96	-0.08	5.41	4.52

SOUTH AFRICAN MARKET SUMMARY

SELECTED ITEMS

On Monday, the Johannesburg Stock Exchange's blue-chip Top-40 index dipped by about 0.1%. Investors are now focusing on South Africa's August inflation data, expected Wednesday. In July, inflation dropped to 4.6% year-on-year, just above the central bank's 4.5% target. A similar result could boost expectations for a rate cut from the South African Reserve Bank (SARB) on Thursday. African Rainbow Capital (ARC) Investments saw its intrinsic net asset value (INAV) per share rise by 8.5%, driven by new investments and fair value gains.

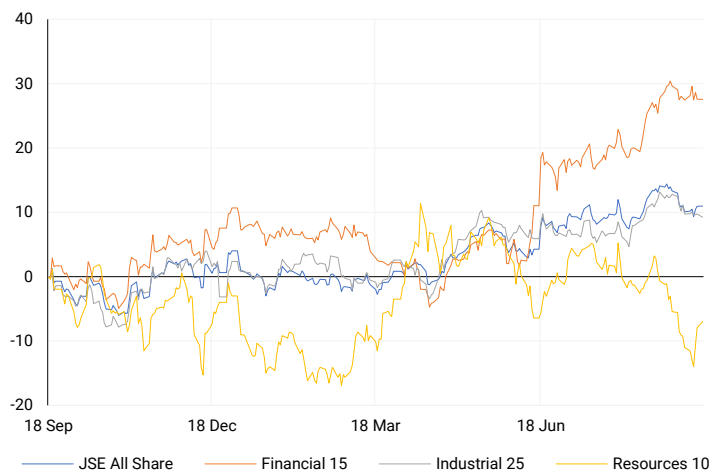
JSE ALL SHARE

One-year



LOCAL INDICES

Normalised percentage performances



LOCAL SENS ANNOUNCEMENTS

SELECTED RELEASE

AFRICAN RAINBOW CAPITAL INVESTMENTS LIMITED – Annual Financial Results

The company's intrinsic net asset value (INAV) rose by 21.5% to R18.6 billion as of June 2024, mainly due to equity raised through a rights issue and gains from investments. INAV per share grew by 8.5% to R12.38, despite a slow economy. Debt increased by 17.1% to R1.73 billion. Over 80% of the portfolio now consists of mature and high-growth investments. TymeBank and Linebooker reached break-even and generated notable gains, while Rain achieved R2.5 billion EBITDA. The company's investment value in the ARC Fund increased by 21.5% over the year.

AIL | 3.86% OPEN | 731c HIGH | 731c LOW | 691c CLOSE | 727c TIME | 07:30

METROFILE HOLDINGS LIMITED – Annual Financial Results

Revenue grew slightly by 1% to R1.14 billion, driven by secure storage growth but offset by lower product sales. Operating profit fell 22% to R200 million, while EBITDA dropped 17% to R287 million. Cash from operations rose 12% to R309 million. However, earnings per share (EPS) plummeted by 88%, with headline EPS (HEPS) down 49%, and normalized HEPS (NHEPS) dropping 38%. The dividend per share decreased by 22% to 14c, with a final 7c dividend declared. Net debt was reduced by 9% to R537 million, and the company completed the R70 million settlement for the remaining stake in Irontree Internet Services. 1.48 million shares were repurchased for R4.4 million.

MFL | -2.76% OPEN | 216c HIGH | 221c LOW | 210c CLOSE | 211c TIME | 07:05

EXPECTED COMPANY REPORTING SCHEDULE

COMPANY	CODE	RELEASE	DATE
Otsurance	OUT	Final	17 Sep '24
Clientele	CLI	Final	18 Sep '24
Discovery	DSY	Final	19 Sep '24
Remgro	REM	Final	20 Sep '24
Gemfields	GML	Interim	22 Sep '24

BANK AND OTHER SELECTE PREFERENCE SHARES

COMPANY	CODE	CLOSE	CLEAN YIELD	NEXT LDT (Est.)
Investec Limited	INPR	8827	11.24	Thu, 06 Jun '24
Standard Bank	SBPP	8827	11.15	Thu, 05 Sep '24
Absa	ABSP	80111	11.48	Thu, 12 Sep '24
Capitec	CPIP	10485	9.69	Thu, 19 Sep '24
Steinhoff	SHFF	9734	10.47	Thu, 17 Oct '24
Grindrod	GNDP	9336	12.22	Thu, 19 Sep '24
Netcare	NTCP	8102	11.82	Thu, 31 Oct '24
Discovery	DSBP	9898	11.91	Thu, 19 Sep '24
Invicta	IVTP	---	13.41	Thu, 27 Jun '24

LOCAL EQUITIES | JSE MID CAP COMPANIES (Cents Per Share)

COMPANY	CODE	CLOSE	PREVIOUS	1D%	1M%	YTD%
Aspen Pharmacare Hldgs Ltd	APN	19349	19109	1.26	-15.83	-4.92
African Rainbow Min Ltd	ARI	17743	17331	2.38	-3.66	-11.29
AVI Ltd	AVI	10375	10466	-0.87	4.80	26.42
Barloworld Ltd	BAW	8176	8117	0.73	-11.55	3.49
Bidvest Ltd	BVT	27439	27525	-0.31	-3.22	8.76
Bytes Technology Grp PLC	BYI	10695	10667	0.26	-1.90	-25.32
Capital&Counties Prop plc	CCO	3545	3547	-0.06	5.26	9.08
Clicks Group Ltd	CLS	37024	37243	-0.59	3.85	13.67
Dis-Chem Pharmacies Ltd	DCP	3520	3497	0.66	-2.76	14.70
Exxaro Resources Ltd	EXX	15504	15511	-0.05	-8.69	-24.18
Fortress Real Est INV B	FFB	2003	2012	-0.45	12.34	39.48
Growthpoint Prop Ltd	GRT	1400	1405	-0.36	3.86	19.86
Harmony GM Co Ltd	HAR	17535	17390	0.83	-5.14	46.63
Hammerson plc	HMN	700	704	-0.57	6.38	2.94
Investec Ltd	INL	13476	13380	0.72	-1.52	7.30
Investec plc	INP	13451	13336	0.86	-1.79	6.80
Italtile Ltd	ITE	1190	1178	1.02	-3.17	6.25
Life Healthc Grp Hldgs Ltd	LHC	1517	1400	8.36	13.29	-17.42
MultiChoice Group Ltd	MCG	10809	10760	0.46	-1.40	33.41
Montauk Renewables Inc	MKR	8201	8125	0.94	1.55	-52.32
Mr Price Group Ltd	MRP	23872	23500	1.58	4.68	52.24
Momentum Met Hldgs Ltd	MTM	2798	2778	0.72	2.30	27.82
Ninety One Plc	N91	3779	3769	0.27	-2.78	-12.36
Nedbank Group Ltd	NED	28824	28476	1.22	-2.29	33.30
Northam Platinum Hldgs Ltd	NPH	10436	10077	3.56	-15.33	-25.69
NEPI Rockcastle N.V.	NRP	14881	15020	-0.93	5.89	17.75
Netcare Limited	NTC	1404	1359	3.31	6.20	-1.40
Ninety One Limited	NY1	3792	3800	-0.21	-1.07	-11.75
Old Mutual Limited	OMU	1250	1248	0.16	1.71	-4.29
OUTsurance Group Ltd	OUT	5105	5042	1.25	7.11	20.97
Pick n Pay Stores Ltd	PIK	2361	2301	2.61	2.34	1.46
Pepkor Holdings Ltd	PPH	2240	2233	0.31	5.86	14.11
Quilter Plc	QLT	3070	3079	-0.29	-7.97	26.44
Redefine Properties Ltd	RDF	497	499	-0.40	10.94	29.09
Remgro Ltd	REM	14578	14422	1.08	4.05	-10.28
Resilient REIT Limited	RES	5947	5928	0.32	10.95	34.27
Reinet Investments S.C.A	RNI	46889	48136	-2.59	0.00	0.57
Sappi Ltd	SAP	4737	4661	1.63	5.81	7.17
Santam Limited	SNT	35792	35700	0.26	1.16	24.90
The Spar Group Ltd	SPP	12664	12450	1.72	0.51	7.41
Sirius Real Estate Ltd	SRE	2347	2342	0.21	5.34	5.96
Tiger Brands Ltd	TBS	24042	24004	0.16	6.90	19.44
Transaction Capital Ltd	TCP	260	247	5.26	-9.41	-67.42
The Foschini Group Limited	TFG	14100	13935	1.18	2.87	27.07
Thungela Resources Ltd	TGA	10800	10745	0.51	-13.60	-29.78
Telkom SA SOC Ltd	TKG	2711	2737	-0.95	13.05	-8.84
Truworths Int Ltd	TRU	9531	9253	3.00	-0.63	28.19
Woolworths Holdings Ltd	WHL	6300	6300	0.00	-2.75	-12.74
Zeda Limited	ZZD	1355	1338	1.27	9.36	6.27

LOCAL EQUITIES | JSE SMALL CAP COMPANIES (Cents Per Share)

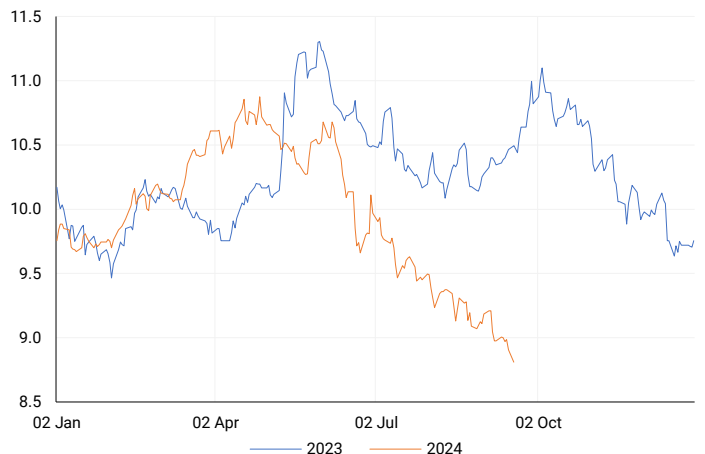
COMPANY	CODE	CLOSE	PREVIOUS	1D%	1M%	YTD%
ArcelorMittal SA Limited	ACL	125	122	2.46	0.81	-23.78
ADVTECH Ltd	ADH	3100	3081	0.62	1.64	26.32
Altron Limited A	AEL	1646	1719	-4.25	-4.58	60.59
AECI Limited	AFE	10226	10203	0.23	-4.43	-6.77
Alexander Forbes Grp Hldgs	AFH	679	699	-2.86	-0.73	2.88
Afrimat Limited	AFT	6621	6659	-0.57	5.10	5.10
African Rainbow Cap Inv	AIL	727	700	3.86	18.21	48.67
Adcock Ingram Hldgs Ltd	AIP	6775	6600	2.65	18.88	12.73
Astral Foods Ltd	ARL	17668	17750	-0.46	2.78	20.54
Attacq Limited	ATT	1300	1316	-1.22	15.56	41.00
Brait PLC	BAT	118	113	4.42	34.09	-35.16
Blue Label Telecoms Ltd	BLU	482	479	0.63	12.09	24.23
Burstone Group	BTN	926	922	0.43	14.75	15.75
Coronation Fund Mngrs Ld	CML	3629	3609	0.55	-5.74	16.46
Curro Holdings Limited	COH	1304	1300	0.31	8.04	11.93
Cashbuild Ltd	CSB	15828	15900	-0.45	2.67	-5.18
DRD Gold Ltd	DRD	1558	1510	3.18	-9.79	-1.20
Datatec Ltd	DTC	3595	3530	1.84	2.54	-11.23
Emira Property Fund Ltd	EMI	1056	1066	-0.94	-3.12	23.51
Equites Prop Fund Ltd	EQU	1430	1417	0.92	6.40	2.51
Famous Brands Ltd	FBR	5505	5534	-0.52	-1.78	-4.97
Fairvest Limited B	FTB	457	449	1.78	6.53	32.85
Grindrod Ltd	GND	1486	1473	0.88	-4.13	29.67
Hosken Cons Inv Ltd	HCI	18138	18156	-0.10	0.59	-10.47
Hudaco Industries Ltd	HDC	18202	18052	0.83	0.84	13.32
Hyprop Inv Ltd	HYP	4200	4177	0.55	19.39	35.00
JSE Ltd	JSE	11924	11955	-0.26	9.67	28.99
KAP Industrial Hldgs Ltd	KAP	330	328	0.61	6.80	25.95
Karooooo Ltd	KRO	68006	68500	-0.72	1.81	43.17
PSG Konsult Limited	KST	1744	1765	-1.19	3.87	13.62
Libstar Holdings Ltd	LBR	410	420	-2.38	2.50	17.14
Lighthouse Properties plc	LTE	810	808	0.25	-2.41	10.20
Industrials REIT Limited	MLI	2.5	2.6	-3.85	78.57	257.14
MAS P.L.C	MSP	1781	1750	1.77	1.19	2.89
Metair Investments Ltd	MTA	1501	1520	-1.25	9.56	-15.44
Motus Holdings Ltd	MTH	11583	11650	-0.58	4.82	14.12
Murray & Roberts Hldgs	MUR	281	267	5.24	-3.10	88.59
Oceana Group Ltd	OCE	6616	6621	-0.08	-5.62	-6.38
Omnia Holdings Ltd	OMN	6368	6234	2.15	6.22	-2.59
Pan African Resource plc	PAN	770	740	4.05	12.74	88.26
PPC Limited	PPC	419	393	6.62	4.49	5.01
Raubex Group Ltd	RBX	5310	5228	1.57	22.27	91.56
RFG Holdings Limited	RFG	1500	1520	-1.32	-4.46	11.11
Reunert Ltd	RLO	7565	7444	1.63	2.05	26.21
SA Corp Real Estate Ltd	SAC	305	305	0.00	10.11	31.47
Super Group Ltd	SPG	2433	2435	-0.08	-6.60	-18.22
Stor-Age Prop REIT Ltd	SSS	1517	1507	0.66	6.91	16.16
Southern Sun LTD	SSU	686	690	-0.58	10.65	30.67
Sun International Ltd	SUI	4536	4663	-2.72	14.31	10.63
Tharisa plc	THA	1806	1765	2.32	-4.95	19.52
Tsogo Sun Gaming Ltd	TSG	1197	1208	-0.91	4.09	-2.29
Vukile Property Fund Ltd	VKE	1852	1842	0.54	7.36	31.16
Wilson Bayly Hlm-Ovc Ltd	WBO	21191	20540	3.17	14.56	62.93

10-YEAR BOND YIELD | SELECTED ITEMS (Basis Point Change)

REGION	YIELD	1D	1M	1Y
United States	3.62%	-3	-26	--
United Kingdom	3.76%	-1	-17	-60
Germany	2.12%	-3	-12	-55
Japan	0.82%	-1	-4	13
South African 10Y	8.83%	-9	-45	-169

SOUTH AFRICAN 10-YEAR

2023 vs 2024 to date

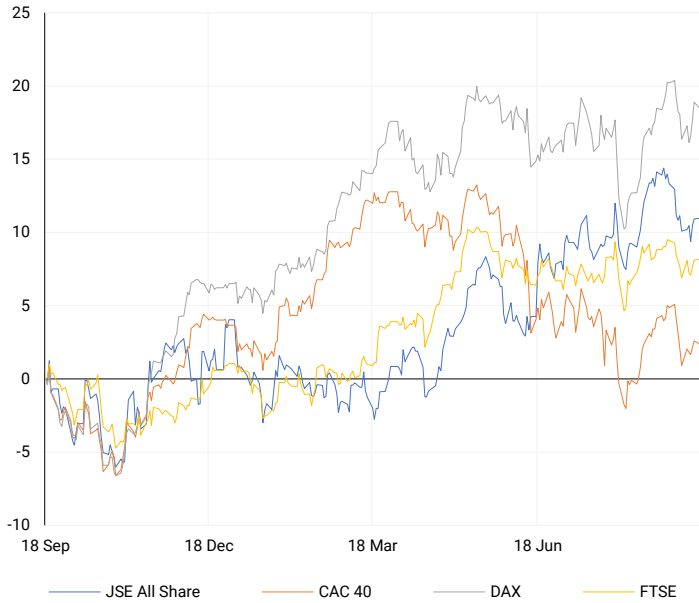


GLOBAL INTEREST RATES | SELECTED ITEMS

REGION	DATE CHANGED	CURRENT RATE
United States	26 Jul '23	5.25%-5.50%
United Kingdom	03 Aug '23	5.25%
European	27 Jul '23	4.25%
SA Repo Rate	25 May '23	8.25%
SA Prime Rate	25 May '23	11.75%

EUROPEAN INDICES

Normalised percentage performances



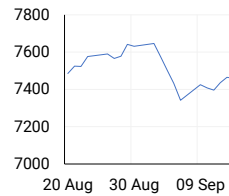
EUROPEAN MARKET SUMMARY

SELECTED ITEMS

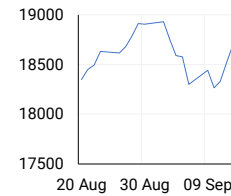
European stocks ended lower on Monday as investors braced for a busy week of interest rate decisions, particularly from the Bank of England. The central bank will meet on Thursday, with markets divided on whether it will opt for a second rate cut in two months. Meanwhile, Italy's inflation dropped to 1.1% in August, according to new data from Istat. Investors will also be watching central bank rate decisions in Norway and the UK later this week.

EUROPEAN INDICES	CLOSE	PREVIOUS	1D%	5D%	1M%	YTD%
CAC 40	7449.44	7465.25	-0.21	0.33	0.00	-1.24
DAX 30	18633.11	18699.40	-0.35	1.03	1.70	11.23
Eurostoxx 50	4825.30	4843.35	-0.37	1.14	-0.29	6.72
FTSE	8278.44	8273.09	0.06	0.09	-0.40	7.05

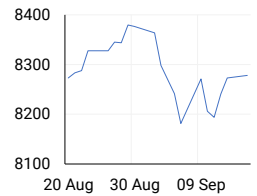
CAC 40



DAX

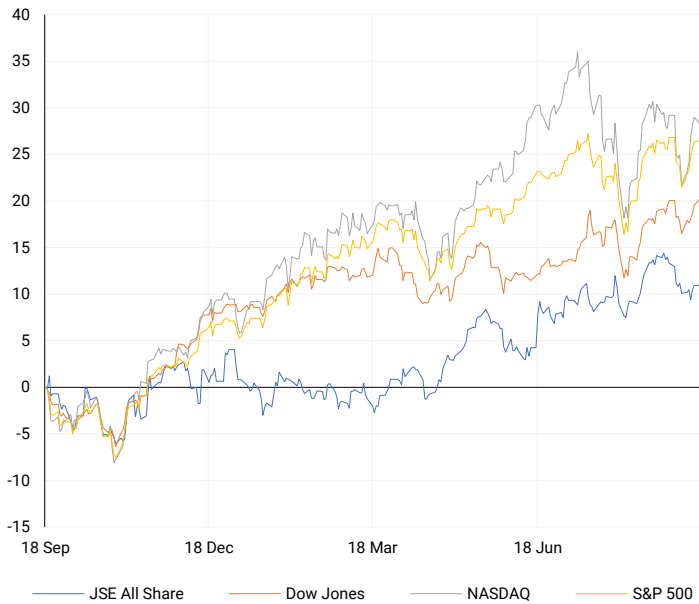


FTSE



AMERICAN INDICES

Normalised percentage performances



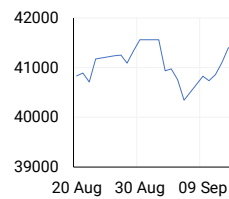
AMERICAN MARKET SUMMARY

SELECTED ITEMS

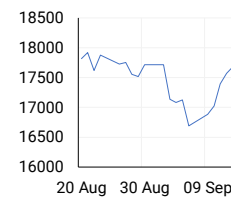
On Monday, the S&P 500 edged up slightly, while the Nasdaq fell due to a decline in technology stocks, as investors evaluated the possibility of a larger-than-expected rate cut from the U.S. Federal Reserve. The Fed is anticipated to announce its first rate cut since March 2022 after its two-day policy meeting starting today, though the size of the cut remains uncertain. U.S. retail sales data is also being closely watched for insights into consumer health ahead of the Fed's decision. The Dow hit a record high, and the S&P 500 is just under 1% away from its July record. Market expectations fluctuate, with a 59% chance of a 50-basis-point cut currently priced in.

AMERICAN INDICES	CLOSE	PREVIOUS	1D%	5D%	1M%	YTD%
Dow Jones	41622.08	41393.78	0.55	1.94	2.37	10.43
Nasdaq	17592.13	17683.98	-0.52	4.19	-0.22	17.19
S&P 500	5633.09	5626.02	0.13	2.96	1.42	18.10
US VIX	17.14	16.56	3.50	-11.88	15.81	37.67

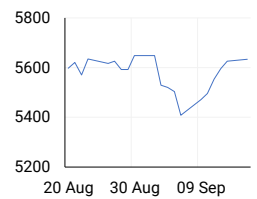
DOW JONES



NASDAQ

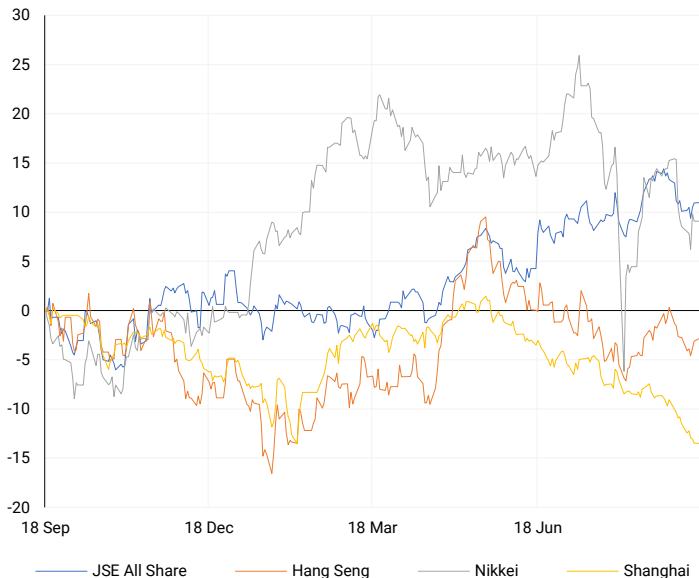


S&P 500



ASIAN INDICES

Normalised percentage performances



ASIAN MARKET SUMMARY

SELECTED ITEMS

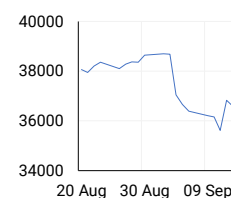
Asia-Pacific stocks showed mixed performance this morning, with Japan's Nikkei 225 dropping over 2%. Traders also analysed Singapore's non-oil domestic exports, which rose 10.7% year-on-year in August but fell 4.7% month-on-month, missing expectations. India's wholesale prices for August are expected to rise by 1.85%, lower than July's 2.04%. Markets in South Korea, mainland China, and Taiwan were closed for holidays. The Bank of Japan will meet this week, likely keeping interest rates unchanged.

ASIAN INDICES	CLOSE	PREVIOUS	1D%	5D%	1M%	YTD%
Hang Seng	17422.12	17369.09	0.31	1.31	-0.05	2.20
Nikkei 225	36581.76	36581.76	0.00	1.01	-3.89	9.32
Shanghai	2704.09	2704.09	0.00	-1.18	-6.09	-9.10

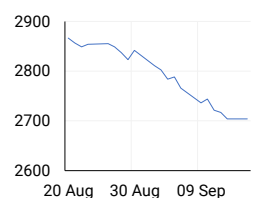
HANG SENG



NIKKEI



SHANGHAI



COMMODITIES MARKET SUMMARY

SELECTED ITEMS

Gold prices rose, nearing an all-time high of \$2,588.81, as lower borrowing costs supported the precious metal. Meanwhile, oil prices continued to climb this morning due to concerns over U.S. production following Hurricane Francine and expectations of lower U.S. crude stockpiles.

COMMODITY	LAST	CLOSE	% CHG	1D%	5D%	YTD%
Brent Crude	73.07	72.95	0.16	1.18	1.40	-5.36
Gold	2576.96	2582.85	-0.23	0.18	3.05	25.20
Palladium	1088.00	1080.92	0.65	1.00	13.69	-1.49
Platinum	988.80	987.30	0.15	-1.13	4.73	0.01
Silver	30.73	30.72	0.03	0.03	8.32	29.14

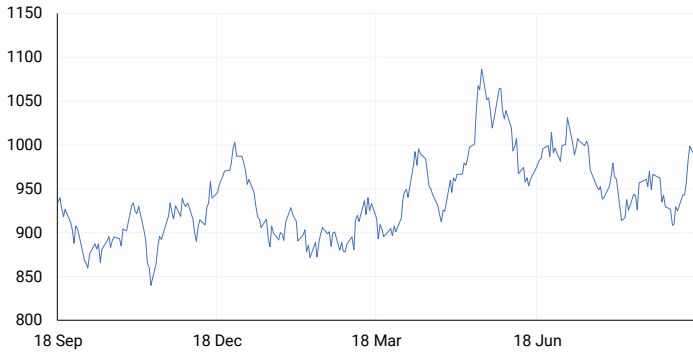
BRENT CRUDE

One-year



PLATINUM

One-year



GOLD

One-year



CURRENCY PAIR	LAST	CLOSE	% CHG	1D%	5D%	YTD%
USDZAR	17.62	17.62	0.00	-0.78	-1.44	-3.83
GBPZAR	23.28	23.29	-0.05	-0.02	-0.42	-0.04
EURZAR	19.61	19.62	-0.04	-0.28	-0.55	-2.84
AUDZAR	11.89	11.90	-0.06	-0.10	-0.12	-4.51
EURUSD	1.11	1.11	-0.06	0.51	0.88	0.86
USDJPY	140.61	140.62	-0.01	-0.16	-1.79	-0.30
GBPUSD	1.32	1.32	-0.07	0.69	1.07	3.79
USDCHF	0.84	0.84	-0.07	-0.52	-0.53	0.37

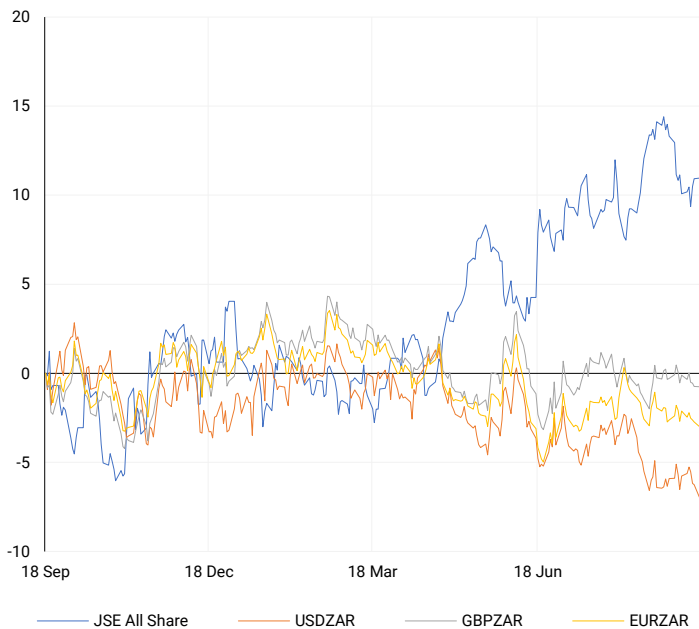
CURRENCY MARKET SUMMARY

SELECTED ITEMS

On Monday, the South African rand strengthened against a weaker U.S. dollar as markets prepared for a busy week of interest rate decisions and the release of local inflation data. This morning, the dollar hovered near its lowest levels of the year, as markets anticipated the start of a U.S. Federal Reserve easing cycle, potentially beginning with a larger-than-expected interest rate cut.

CURRENCY PAIRS vs JSE ALL SHARE

Normalised percentage performances



USDZAR

One-year



EURUSD

One-year



SOURCES | JSE, IRESS, MONEYWEB, CNBC, BBC, CNN

Disclaimer: This note is prepared for Sanlam Private Wealth (Pty) Ltd, by K2013143132 (Pty) Ltd trading as ThompsonGreen. ThompsonGreen is an independent company contracted to Sanlam Private Wealth (Pty) Ltd. The views expressed in this note are those of ThompsonGreen and/or its analysts and not necessarily the views of Sanlam Private Wealth (Pty) Ltd, Sanlam or any officer or agent thereof. K2013143132 (Pty) Ltd trading as ThompsonGreen is a research house and not a registered broker, financial adviser or financial service provider. Our editors and customer services teams also do not give personal investment advice. The information in this document is general advice only and may not be appropriate to your particular investment objectives, financial situation or particular needs. Before investing, or if you are in any doubt about your personal situation, you should seek professional advice from a stockbroker or independent financial adviser authorised by the Financial Sector Conduct Authority.