

GLOBAL OVERVIEW | SELECTED INDICES

SOUTH AFRICAN INDICES						
	CLOSE	PREVIOUS	1D%	5D%	1M%	YTD%
All Share	83032.70	82007.34	1.25	1.70	0.25	7.98
Top 40	75175.60	74282.90	1.20	1.57	-0.70	6.64
Financial 15	20869.60	20599.43	1.31	-0.28	3.14	16.77
Industrial 25	111963.00	110676.19	1.16	0.44	-0.12	7.95
Resource 10	55890.20	55184.37	1.28	8.25	-5.16	-2.85
Mid Cap	88592.20	87064.27	1.75	4.17	1.70	10.17
Small Cap	87089.20	86100.29	1.15	1.45	6.18	20.13
Banks	13082.30	12927.91	1.19	-1.02	2.29	19.49
Retailers	7442.09	7289.45	2.09	2.27	4.66	19.39
Property (J253) - TR	2400.41	2400.41	0.00	0.72	8.00	28.80

AMERICAN INDICES						
	CLOSE	PREVIOUS	1D%	5D%	1M%	YTD%
Dow Jones	41606.18	41622.08	-0.04	2.13	2.33	10.39
Nasdaq	17628.06	17592.13	0.20	3.54	-0.02	17.43
S&P 500	5634.58	5633.09	0.03	2.53	1.45	18.13
US VIX	17.61	17.14	2.74	-7.70	18.99	41.45

EUROPEAN INDICES						
	CLOSE	PREVIOUS	1D%	5D%	1M%	YTD%
CAC 40	7487.42	7449.44	0.51	1.08	0.51	-0.74
DAX 30	18726.08	18633.11	0.50	2.52	2.20	11.79
Eurostoxx 50	4861.80	4825.30	0.76	2.39	0.47	7.52
FTSE	8309.86	8278.44	0.38	1.27	-0.02	7.46

ASIAN INDICES						
	CLOSE	PREVIOUS	1D%	5D%	1M%	YTD%
Hang Seng	17660.02	17422.12	1.37	2.47	1.32	3.59
Nikkei 225	36203.22	36581.76	-1.03	0.12	-4.89	8.19
Shanghai	2704.09	2704.09	0.00	-1.46	-6.09	-9.10

EARLY MORNING MARKETS						
	LAST	CLOSE	% CHG	1D%	5D%	YTD%
TENCENT	380.00	380.00	0.00	0.58	3.09	30.94
BHP AUS	3936.00	3955.00	-0.48	0.00	5.21	-17.26

NOTE : 5D% and 1M% are rolling percentage moves

INTERNATIONAL ECONOMIC CALENDAR | SELECTED EVENTS

TIME	AREA	TODAY'S EVENTS & RELEASES	PERIOD	EXP.	PREV.
8:00	GB	Inflation Rate y/y	Aug	2.10%	2.20%
10:00	ZA	Inflation Rate y/y	Aug	4.50%	4.60%
10:00	ZA	Core Inflation Rate y/y	Aug	4.30%	4.30%
13:00	ZA	Retail Sales y/y	Jul	3.50%	4.10%
20:00	US	Fed Interest Rate Decision	---	5.3%	5.5%

TIME	AREA	PREVIOUS SESSION'S RELEASES	PERIOD	EXP.	ACT.
10:00	ZA	Consumer Confidence	Q3	-10.00	-5.00
11:00	DE	ZEW Economic Sentiment Index	Sep	18.00	3.60
14:30	US	Retail Sales m/m	Aug	-0.30%	0.10%
---	---	---	---	---	---
---	---	---	---	---	---

JSE ALL SHARE | BEST AND WORST ONE-DAY PERFORMERS

BEST ONE-DAY % PERFORMERS						
	CODE	CLOSE	1D%	5D%	YTD%	
Karoo000 Ltd	KRO	73860	8.61	6.74	55.50	
OUTsurance Group Limited	OUT	5525	8.23	9.04	30.92	
Metair Investments Ltd	MTA	1606	7.00	8.00	-9.52	
Super Group Ltd	SPG	2562	5.30	-7.31	-13.88	
Brait PLC	BAT	124	5.08	20.39	-31.87	
Northam Platinum Hldgs Ltd	NPH	10898	4.43	20.14	-22.40	

WORST ONE-DAY % PERFORMERS						
	CODE	CLOSE	1D%	5D%	YTD%	
British American Tob plc	BTI	67341	-2.88	-3.19	24.36	
Pan African Resource plc	PAN	756	-1.82	9.25	84.84	
Lighthouse Properties plc	LTE	800	-1.23	-0.62	8.84	
Alexander Forbes Grp Hldgs	AFH	671	-1.18	-2.75	1.67	
Fairvest Limited B	FTB	452	-1.09	2.03	31.40	

DIVIDEND DATA

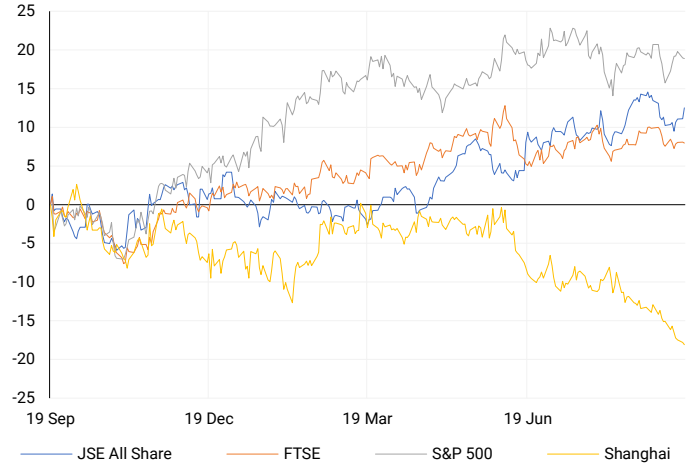
COMPANY	CODE	EXPECTED DIVIDEND	COMPANY	CODE	EXPECTED DIVIDEND
Adcock Ingram Holdings	AIP	150 ZARc	Northam Platinum	NPH	70 ZARc
Aspen Pharmacare	APN	359 ZARc	PPC	PPC	33.5 ZARc
Compagnie Fin. Richemont SA	CFR	275 CHF	Santam	SNT	535 ZARc
Grindrod	GND	23 ZARc	South32	S32	3.1 USDc
NEPI Rockcastle NV	NRP	27.11 EURc	Thungela Resources	TGA	200 ZARc

SOURCES | JSE, IRESS, MONEYWEB, CNBC, BBC, CNN

PLEASE SEE THE BOTTOM OF THE LAST PAGE FOR THE FULL DISCLAIMER

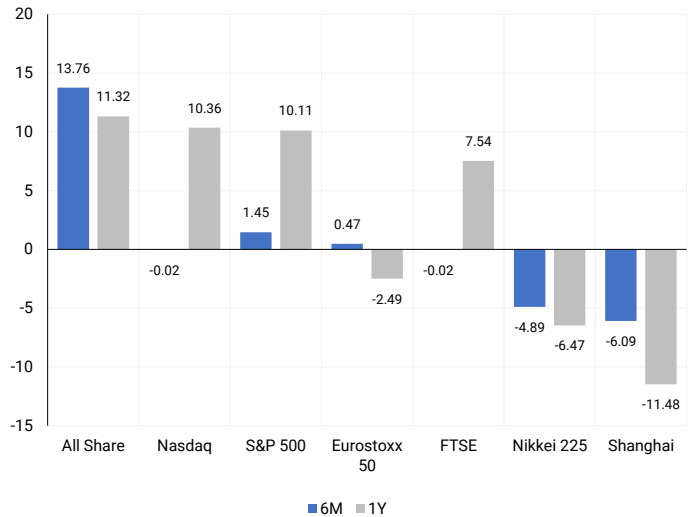
INTERNATIONAL INDICES

Normalised percentage performances - In rand terms



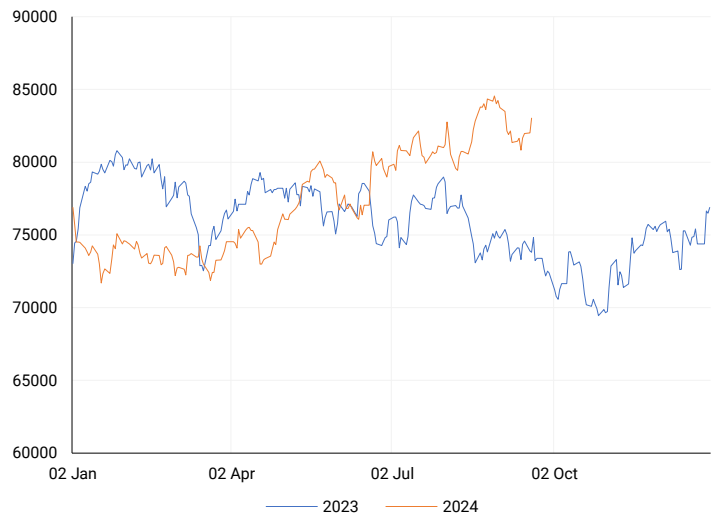
INTERNATIONAL INDICES

6-month & 1-year percentage performances



JSE ALL SHARE INDEX

2023 v 2024 to date



Ex div Wed, 18 September

LOCAL EQUITIES | JSE LARGE CAP COMPANIES (Cents Per Share)

COMPANY	CLOSE	PREVIOUS	1D%	5D%	1M%	YTD%
Absa Group Limited	17140	16938	1.19	-1.07	8.65	4.70
Anglo American plc	49430	48680	1.54	5.92	-1.48	4.40
Anglo American Plat Ltd	57735	55681	3.69	1.19	-12.40	-40.11
Anglogold Ashanti Ltd	49654	49641	0.03	3.54	-10.37	40.50
Anheuser-Busch InBev SA NV	113644	114300	-0.57	-1.13	5.40	-5.31
BHP Group Limited	47331	47095	0.50	3.43	0.48	-25.28
BID Corporation Ltd	44533	43830	1.60	-0.32	2.11	4.38
British American Tob plc	67341	69337	-2.88	-3.19	5.37	24.36
Compagnie Fin Richemont	249977	248268	0.69	-0.25	-8.33	-2.64
Capitec Bank Hldgs Ltd	300600	298250	0.79	0.00	6.04	48.34
Discovery Ltd	15657	15499	1.02	4.30	4.49	8.97
Firststrand Ltd	8300	8272	0.34	-4.48	0.07	12.91
Gold Fields Ltd	25810	25590	0.86	7.34	-11.75	-7.08
Glencore plc	8844	8820	0.27	3.62	-5.23	-20.79
Impala Platinum Hlgs Ltd	9436	9102	3.67	28.38	9.58	3.39
Kumba Iron Ore Ltd	35150	34986	0.47	8.72	-1.86	-42.83
Mondi plc	33500	32520	3.01	0.15	-0.74	-7.71
MTN Group Ltd	9371	9252	1.29	1.38	5.71	-18.87
Naspers Ltd -N-	353782	347800	1.72	0.20	-3.55	13.10
Prosus N.V.	63994	63257	1.17	0.56	-2.21	14.20
South32 Limited	3827	3791	0.95	7.50	9.16	-9.29
Standard Bank Group Ltd	23875	23260	2.64	0.63	1.96	14.73
Shoprite Holdings Ltd	30100	29794	1.03	0.33	-1.79	9.43
Sanlam Limited	8698	8565	1.55	2.07	2.62	19.48
Sasol Limited	12627	12460	1.34	3.32	-7.60	-31.85
Sibanye Stillwater Ltd	1870	1821	2.69	25.59	1.80	-24.90
Vodacom Group Ltd	11178	11079	0.89	0.19	6.36	5.45

SOUTH AFRICAN MARKET SUMMARY

SELECTED ITEMS

On the stock market, the Top-40 index rose by 1.2% on Tuesday. Investors are now focused on South Africa's August inflation figures, due today, and the central bank's policy decision on Thursday, with economists predicting a 25-basis-point rate cut. Metair's share price surged by over 18% in early trading before closing 7% higher at R16.06. Hyprop, a retail property fund, anticipates up to a 7% rise in distributable income per share for FY2025. OUTsurance Group reported strong results, with its full-year dividend per share increasing by 29.4% to 174.4 cents.

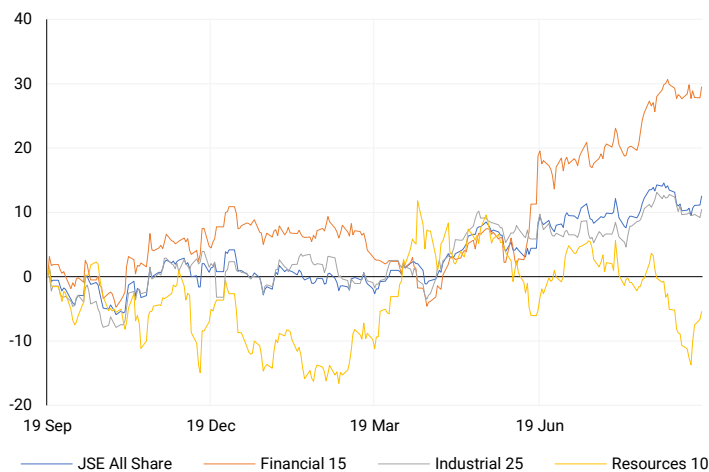
JSE ALL SHARE

One-year



LOCAL INDICES

Normalised percentage performances



LOCAL SENS ANNOUNCEMENTS

SELECTED RELEASE

OUTSURANCE GROUP LIMITED – Results

In 2024, earnings attributable to ordinary shareholders increased by 36.3% to R4.06 billion from R2.98 billion in 2023. Headline earnings grew by 19% to R3.53 billion. The number of shares in issue remained fairly stable at around 1.54 billion. Earnings per share rose by 36.5% to 265.5 cents, while headline earnings per share increased by 19.1% to 230.4 cents. The company also declared a total dividend of 214.4 cents per share, up 49.6%, which includes a special dividend of 40.0 cents compared to just 8.5 cents last year.

OUT | 8.23% OPEN | 5156c HIGH | 5617c LOW | 5126c CLOSE | 5525c TIME | 08:00

HYPROP INVESTMENTS LIMITED – Consolidated Audited Results

For the year ending June 2024, net operating income increased by 6.1% to R1.30 billion, compared to R1.23 billion in June 2023. However, headline earnings per share dropped by 24% to 299.5 cents, while basic earnings per share fell by 36.5% to 274.3 cents. Distributable income per share decreased by 8.6% to 370.4 cents, and the dividend per share declined by 6.4% to 280 cents. The net asset value per share also dropped by 4.8% to R60.32.

HYP | 3.26% OPEN | 4200c HIGH | 4416c LOW | 4200c CLOSE | 4337c TIME | 07:30

EXPECTED COMPANY REPORTING SCHEDULE

COMPANY	CODE	RELEASE	DATE
Clientele	CLI	Final	18 Sep '24
Discovery	DSY	Final	19 Sep '24
Remgro	REM	Final	20 Sep '24
Gemfields	GML	Interim	22 Sep '24
Texon	TEX	Final	23 Sep '24

BANK AND OTHER SELECTE PREFERENCE SHARES

COMPANY	CODE	CLOSE	CLEAN YIELD	NEXT LDT (Est.)
Investec Limited	INPR	8840	11.24	Thu, 06 Jun '24
Standard Bank	SBPP	8950	11.15	Thu, 05 Sep '24
Absa	ABSP	81400	11.48	Thu, 12 Sep '24
Capitec	CPIP	10485	9.69	Thu, 19 Sep '24
Steinhoff	SHFF	9734	10.47	Thu, 17 Oct '24
Grindrod	GNDP	9260	12.22	Thu, 19 Sep '24
Netcare	NTCP	8300	11.82	Thu, 31 Oct '24
Discovery	DSBP	9899	11.91	Thu, 19 Sep '24
Invicta	IVTP	---	13.41	Thu, 27 Jun '24

LOCAL EQUITIES | JSE MID CAP COMPANIES (Cents Per Share)

COMPANY	CODE	CLOSE	PREVIOUS	1D%	1M%	YTD%
Aspen Pharmacare Hldgs Ltd	APN	19461	19349	0.58	-15.34	-4.37
African Rainbow Min Ltd	ARI	17951	17743	1.17	-2.54	-10.25
AVI Ltd	AVI	10326	10375	-0.47	4.30	25.82
Barloworld Ltd	BAW	8282	8176	1.30	-10.41	4.84
Bidvest Ltd	BVT	28197	27439	2.76	-0.55	11.76
Bytes Technology Grp PLC	BYI	10929	10695	2.19	0.25	-23.69
Capital&Counties Prop plc	CCO	3544	3545	-0.03	5.23	9.05
Clicks Group Ltd	CLS	37972	37024	2.56	6.50	16.58
Dis-Chem Pharmacies Ltd	DCP	3564	3520	1.25	-1.55	16.13
Exxaro Resources Ltd	EXX	15699	15504	1.26	-7.54	-23.22
Fortress Real Est INV B	FFB	2005	2003	0.10	12.45	39.62
Growthpoint Prop Ltd	GRT	1413	1400	0.93	4.82	20.98
Harmony GM Co Ltd	HAR	17948	17535	2.36	-2.91	50.08
Hammerson plc	HMN	698	700	-0.29	6.08	2.65
Investec Ltd	INL	13743	13476	1.98	0.43	9.43
Investec plc	INP	13738	13451	2.13	0.31	9.08
Italtile Ltd	ITE	1220	1190	2.52	-0.73	8.93
Life Healthc Grp Hldgs Ltd	LHC	1582	1517	4.28	18.15	-13.88
MultiChoice Group Ltd	MCG	10780	10809	-0.27	-1.66	33.05
Montauk Renewables Inc	MKR	8301	8201	1.22	2.79	-51.74
Mr Price Group Ltd	MRP	23992	23872	0.50	5.21	53.00
Momentum Met Hldgs Ltd	MTM	2838	2798	1.43	3.77	29.65
Ninety One Plc	N91	3830	3779	1.35	-1.47	-11.18
Nedbank Group Ltd	NED	29024	28824	0.69	-1.62	34.23
Northam Platinum Hldgs Ltd	NPH	10898	10436	4.43	-11.59	-22.40
NEPI Rockcastle N.V.	NRP	14840	14881	-0.28	5.60	17.42
Netcare Limited	NTC	1409	1404	0.36	6.58	-1.05
Ninety One Limited	NY1	3862	3792	1.85	0.76	-10.12
Old Mutual Limited	OMU	1265	1250	1.20	2.93	-3.14
OUTsurance Group Ltd	OUT	5525	5105	8.23	15.93	30.92
Pick n Pay Stores Ltd	PIK	2465	2361	4.40	6.85	5.93
Pepkor Holdings Ltd	PPH	2286	2240	2.05	8.03	16.45
Quilter Plc	QLT	3071	3070	0.03	-7.94	26.48
Redefine Properties Ltd	RDF	499	497	0.40	11.38	29.61
Remgro Ltd	REM	14900	14578	2.21	6.35	-8.30
Resilient REIT Limited	RES	5966	5947	0.32	11.31	34.70
Reinet Investments S.C.A	RNI	47259	46889	0.79	0.79	1.37
Sappi Ltd	SAP	4784	4737	0.99	6.86	8.24
Santam Limited	SNT	36086	35792	0.82	2.00	25.92
The Spar Group Ltd	SPP	12942	12664	2.20	2.71	9.77
Sirius Real Estate Ltd	SRE	2335	2347	-0.51	4.80	5.42
Tiger Brands Ltd	TBS	24000	24042	-0.17	6.71	19.23
Transaction Capital Ltd	TCP	258	260	-0.77	-10.10	-67.67
The Foschini Group Limited	TFG	14418	14100	2.26	5.19	29.94
Thungela Resources Ltd	TGA	10870	10800	0.65	-13.04	-29.32
Telkom SA SOC Ltd	TKG	2698	2711	-0.48	12.51	-9.28
Truworths Int Ltd	TRU	9948	9531	4.38	3.72	33.80
Woolworths Holdings Ltd	WHL	6498	6300	3.14	0.31	-10.00
Zeda Limited	ZZD	1360	1355	0.37	9.77	6.67

LOCAL EQUITIES | JSE SMALL CAP COMPANIES (Cents Per Share)

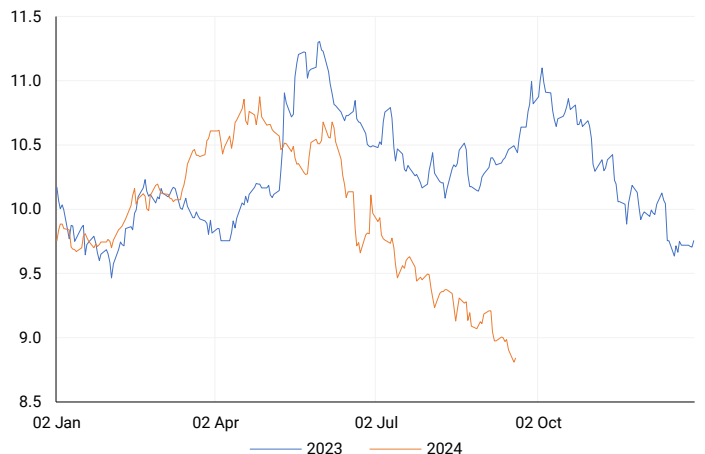
COMPANY	CODE	CLOSE	PREVIOUS	1D%	1M%	YTD%
ArcelorMittal SA Limited	ACL	123	125	-1.60	-0.81	-25.00
ADVTECH Ltd	ADH	3076	3100	-0.77	0.85	25.35
Altron Limited A	AEL	1696	1646	3.04	-1.68	65.46
AECI Limited	AFE	10370	10226	1.41	-3.08	-5.46
Alexander Forbes Grp Hldgs	AFH	671	679	-1.18	-1.90	1.67
Afrimat Limited	AFT	6736	6621	1.74	6.92	6.92
African Rainbow Cap Inv	AIL	730	727	0.41	18.70	49.28
Adcock Ingram Hldgs Ltd	AIP	6735	6775	-0.59	18.18	12.06
Astral Foods Ltd	ARL	17800	17668	0.75	3.55	21.44
Attacq Limited	ATT	1316	1300	1.23	16.98	42.73
Brait PLC	BAT	124	118	5.08	40.91	-31.87
Blue Label Telecoms Ltd	BLU	481	482	-0.21	11.86	23.97
Burstone Group	BTN	930	926	0.43	15.24	16.25
Coronation Fund Mngrs Ld	CML	3658	3629	0.80	-4.99	17.39
Curro Holdings Limited	COH	1299	1304	-0.38	7.62	11.50
Cashbuild Ltd	CSB	16120	15828	1.84	4.56	-3.43
DRD Gold Ltd	DRD	1610	1558	3.34	-6.77	2.09
Datatec Ltd	DTC	3594	3595	-0.03	2.51	-11.26
Emira Property Fund Ltd	EMI	1070	1056	1.33	-1.83	25.15
Equites Prop Fund Ltd	EQU	1462	1430	2.24	8.78	4.80
Famous Brands Ltd	FBR	5508	5505	0.05	-1.73	-4.92
Fairvest Limited B	FTB	452	457	-1.09	5.36	31.40
Grindrod Ltd	GND	1509	1486	1.55	-2.65	31.68
Hosken Cons Inv Ltd	HCI	18530	18138	2.16	2.77	-8.54
Hudaco Industries Ltd	HDC	18250	18202	0.26	1.11	13.62
Hyprop Inv Ltd	HYP	4337	4200	3.26	23.28	39.41
JSE Ltd	JSE	12069	11924	1.22	11.00	30.56
KAP Industrial Hldgs Ltd	KAP	334	330	1.21	8.09	27.48
Karooooo Ltd	KRO	73860	68006	8.61	10.57	55.50
PSG Konsult Limited	KST	1750	1744	0.34	4.23	14.01
Libstar Holdings Ltd	LBR	401	410	-2.20	0.25	14.57
Lighthouse Properties plc	LTE	800	810	-1.23	-3.61	8.84
Industrials REIT Limited	MLI	1.82858	1.75825	4.00	30.61	161.23
MAS P.L.C	MSP	1832	1781	2.86	4.09	5.83
Metair Investments Ltd	MTA	1606	1501	7.00	17.23	-9.52
Motus Holdings Ltd	MTH	11681	11583	0.85	5.71	15.08
Murray & Roberts Hldgs	MUR	280	281	-0.36	-3.45	87.92
Oceana Group Ltd	OCE	6561	6616	-0.83	-6.41	-7.16
Omnia Holdings Ltd	OMN	6382	6368	0.22	6.46	-2.37
Pan African Resource plc	PAN	756	770	-1.82	10.69	84.84
PPC Limited	PPC	415	419	-0.95	3.49	4.01
Raubex Group Ltd	RBX	5451	5310	2.66	25.51	96.65
RFG Holdings Limited	RFG	1510	1500	0.67	-3.82	11.85
Reunert Ltd	RLO	7731	7565	2.19	4.29	28.98
SA Corp Real Estate Ltd	SAC	308	305	0.98	11.19	32.76
Super Group Ltd	SPG	2562	2433	5.30	-1.65	-13.88
Stor-Age Prop REIT Ltd	SSS	1534	1517	1.12	8.10	17.46
Southern Sun LTD	SSU	690	686	0.58	11.29	31.43
Sun International Ltd	SUI	4503	4536	-0.73	13.48	9.83
Tharisa plc	THA	1800	1806	-0.33	-5.26	19.13
Tsogo Sun Gaming Ltd	TSG	1245	1197	4.01	8.26	1.63
Vukile Property Fund Ltd	VKE	1882	1852	1.62	9.10	33.29
Wilson Bayly Hlm-Ovc Ltd	WBO	22047	21191	4.04	19.19	69.51

10-YEAR BOND YIELD | SELECTED ITEMS (Basis Point Change)

REGION	YIELD	1D	1M	1Y
United States	3.64%	2	-24	--
United Kingdom	3.77%	1	-16	--
Germany	2.14%	2	-10	--
Japan	0.81%	-2	-5	--
South African 10Y	8.86%	3	-42	-166

SOUTH AFRICAN 10-YEAR

2023 vs 2024 to date

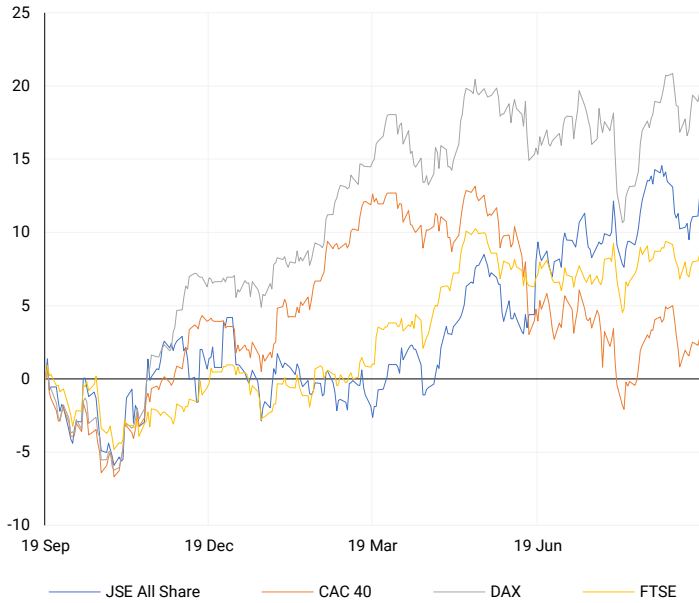


GLOBAL INTEREST RATES | SELECTED ITEMS

REGION	DATE CHANGED	CURRENT RATE
United States	Jul '23	5.25%-5.50%
United Kingdom	Aug '24	5.00%
European	Sep '24	3.65%
SA Repo Rate	May '23	8.25%
SA Prime Rate	May '23	11.75%

EUROPEAN INDICES

Normalised percentage performances



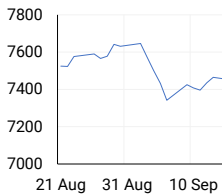
EUROPEAN MARKET SUMMARY

SELECTED ITEMS

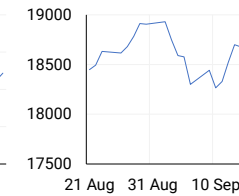
European stocks closed higher on Tuesday, bouncing back from a weak start to the week, as attention remained on upcoming central bank meetings. The Bank of England is set to meet on Thursday. Meanwhile, in Germany, investor sentiment worsened more than expected in September, with the ZEW index falling by 3.6 points to 19.2, reflecting a decline in investor morale.

EUROPEAN INDICES	CLOSE	PREVIOUS	1D%	5D%	1M%	YTD%
CAC 40	7487.42	7449.44	0.51	1.08	0.51	-0.74
DAX 30	18726.08	18633.11	0.50	2.52	2.20	11.79
Eurostoxx 50	4861.80	4825.30	0.76	2.39	0.47	7.52
FTSE	8309.86	8278.44	0.38	1.27	-0.02	7.46

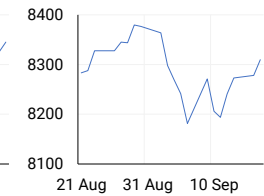
CAC 40



DAX

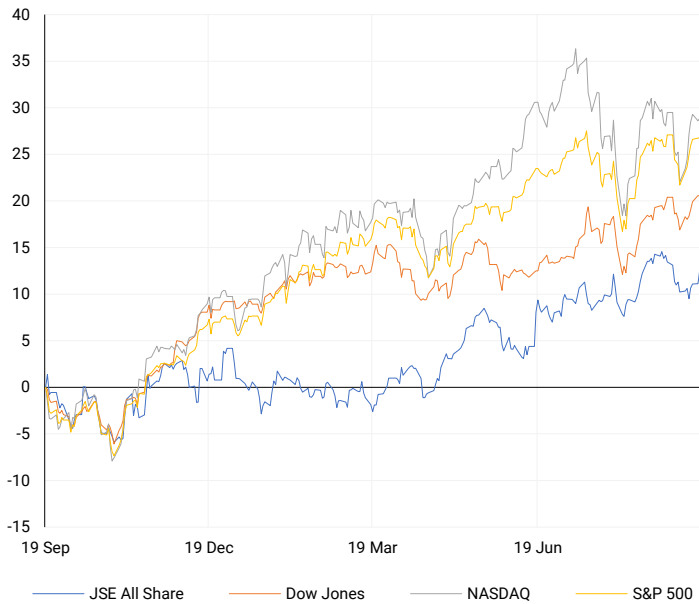


FTSE



AMERICAN INDICES

Normalised percentage performances



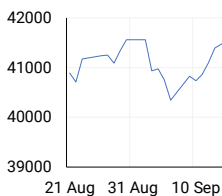
AMERICAN MARKET SUMMARY

SELECTED ITEMS

U.S. stocks ended nearly flat on Tuesday, giving up earlier gains that had pushed the S&P 500 and Dow to record highs, as investors awaited the Federal Reserve's first rate cut in 4.5 years. A report from the U.S. Commerce Department showed an unexpected rise in retail sales for August, driven by strong online purchases despite a drop in auto sales, indicating a stable economy in the third quarter. Markets are anticipating a 65% chance of a 50-basis-point rate cut from the Fed following its two-day meeting, according to the CME's FedWatch Tool.

AMERICAN INDICES	CLOSE	PREVIOUS	1D%	5D%	1M%	YTD%
Dow Jones	41606.18	41622.08	-0.04	2.13	2.33	10.39
Nasdaq	17628.06	17592.13	0.20	3.54	-0.02	17.43
S&P 500	5634.58	5633.09	0.03	2.53	1.45	18.13
US VIX	17.61	17.14	2.74	-7.70	18.99	41.45

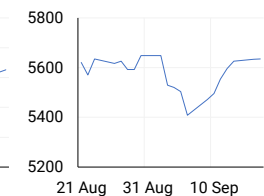
DOW JONES



NASDAQ

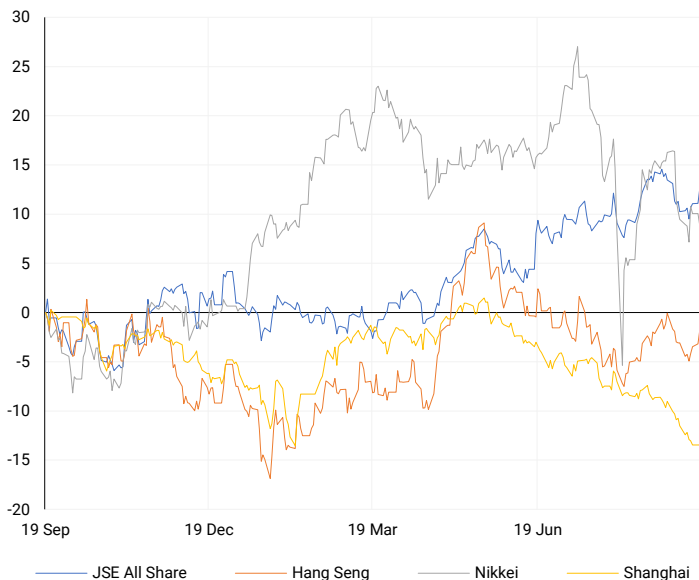


S&P 500



ASIAN INDICES

Normalised percentage performances



ASIAN MARKET SUMMARY

SELECTED ITEMS

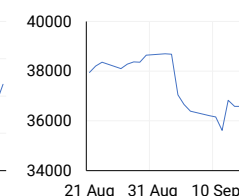
Asia-Pacific markets opened mixed this morning as investors analysed economic data from Japan and awaited Indonesia's central bank rate decision. Japan's imports and exports for August rose 2.3% and 5.6%, respectively, but both figures fell short of expectations. Additionally, Japan's private sector machinery orders in July declined 0.1%, missing predictions of a 0.5% increase. Bank Indonesia is expected to announce its key rate decision, with the policy rate currently at its highest since 2016 despite inflation being within target. Meanwhile, markets in South Korea and Hong Kong are closed, while mainland China resumes trading after a three-day holiday.

ASIAN INDICES	CLOSE	PREVIOUS	1D%	5D%	1M%	YTD%
Hang Seng	17660.02	17422.12	1.37	2.47	1.32	3.59
Nikkei 225	36203.22	36581.76	-1.03	0.12	-4.89	8.19
Shanghai	2704.09	2704.09	0.00	-1.46	-6.09	-9.10

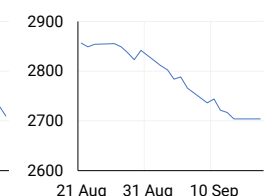
HANG SENG



NIKKEI



SHANGHAI



COMMODITIES MARKET SUMMARY

SELECTED ITEMS

Gold prices remained flat this morning as investors evaluated the likelihood of a significant interest rate cut by the Federal Reserve. Meanwhile, oil prices stabilized after gains in the past two sessions, with markets awaiting the Fed's decision and concerns over potential unrest in the Middle East continuing to support oil prices.

COMMODITY	LAST	CLOSE	% CHG	1D%	5D%	YTD%
Brent Crude	73.40	73.70	-0.41	1.03	5.75	-4.39
Gold	2574.33	2569.64	0.18	-0.51	2.10	24.56
Palladium	1110.76	1118.00	-0.65	3.43	14.69	1.89
Platinum	981.90	986.15	-0.43	-0.12	4.55	-0.11
Silver	30.47	30.69	-0.72	-0.10	8.06	29.01

BRENT CRUDE

One-year



PLATINUM

One-year



GOLD

One-year



CURRENCY PAIR	LAST	CLOSE	% CHG	1D%	5D%	YTD%
USDZAR	17.59	17.60	-0.08	-0.11	-1.92	-3.93
GBPZAR	23.15	23.17	-0.08	-0.50	-1.28	-0.54
EURZAR	19.57	19.57	-0.01	-0.24	-1.04	-3.07
AUDZAR	11.89	11.90	-0.05	0.03	-0.32	-4.48
EURUSD	1.11	1.11	0.10	-0.16	0.86	0.70
USDJPY	141.43	142.42	-0.70	1.29	-0.02	0.98
GBPUSD	1.32	1.32	0.03	-0.41	0.62	3.37
USDCHF	0.85	0.85	-0.20	0.28	0.02	0.66

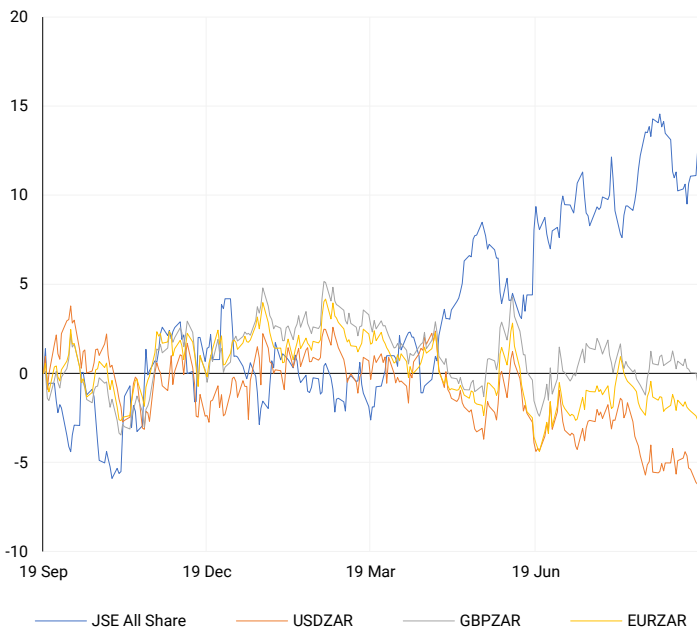
CURRENCY MARKET SUMMARY

SELECTED ITEMS

The South African rand remained stable on Tuesday, as investors awaited the U.S. Federal Reserve's policy decision, which could result in a significant interest rate cut. Meanwhile, the U.S. dollar held steady this morning after stronger-than-expected retail sales data led traders to reduce expectations for a large initial rate cut from the Federal Reserve.

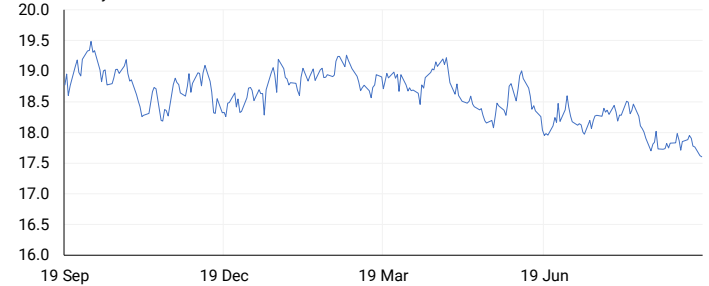
CURRENCY PAIRS vs JSE ALL SHARE

Normalised percentage performances



USDZAR

One-year



EURUSD

One-year



SOURCES | JSE, IRESS, MONEYWEB, CNBC, BBC, CNN

Disclaimer: This note is prepared for Sanlam Private Wealth (Pty) Ltd, by K2013143132 (Pty) Ltd trading as ThompsonGreen. ThompsonGreen is an independent company contracted to Sanlam Private Wealth (Pty) Ltd. The views expressed in this note are those of ThompsonGreen and/or its analysts and not necessarily the views of Sanlam Private Wealth (Pty) Ltd, Sanlam or any officer or agent thereof. K2013143132 (Pty) Ltd trading as ThompsonGreen is a research house and not a registered broker, financial adviser or financial service provider. Our editors and customer services teams also do not give personal investment advice. The information in this document is general advice only and may not be appropriate to your particular investment objectives, financial situation or particular needs. Before investing, or if you are in any doubt about your personal situation, you should seek professional advice from a stockbroker or independent financial adviser authorised by the Financial Sector Conduct Authority.