

GLOBAL OVERVIEW | SELECTED INDICES

SOUTH AFRICAN INDICES						
	CLOSE	PREVIOUS	1D%	5D%	1M%	YTD%
All Share	82718.58	83032.71	-0.38	2.34	-0.13	7.58
Top 40	74844.95	75175.59	-0.44	2.21	-1.14	6.17
Financial 15	20921.35	20869.60	0.25	1.64	3.40	17.05
Industrial 25	111588.72	111962.94	-0.33	0.51	-0.45	7.59
Resource 10	55029.88	55890.15	-1.54	7.88	-6.62	-4.35
Mid Cap	88321.25	88592.15	-0.31	4.82	1.39	9.83
Small Cap	87031.68	87089.20	-0.07	1.69	6.11	20.05
Banks	13112.91	13082.29	0.23	1.18	2.53	19.77
Retailers	7455.91	7442.09	0.19	4.06	4.86	19.61
Property (J253) - TR	2411.48	2414.51	-0.13	0.79	8.49	29.39
AMERICAN INDICES						
	CLOSE	PREVIOUS	1D%	5D%	1M%	YTD%
Dow Jones	41503.10	41606.18	-0.25	1.57	2.07	10.12
Nasdaq	17573.30	17628.06	-0.31	1.02	-0.33	17.07
S&P 500	5618.26	5634.58	-0.29	1.15	1.15	17.79
US VIX	18.23	17.61	3.52	3.05	23.18	46.43
EUROPEAN INDICES						
	CLOSE	PREVIOUS	1D%	5D%	1M%	YTD%
CAC 40	7444.18	7487.42	-0.58	0.64	-0.07	-1.31
DAX 30	18711.49	18726.08	-0.08	2.08	2.12	11.70
Eurostoxx 50	4837.10	4861.80	-0.51	1.47	-0.04	6.98
FTSE	8253.68	8309.86	-0.68	0.73	-0.69	6.73
ASIAN INDICES						
	CLOSE	PREVIOUS	1D%	5D%	1M%	YTD%
Hang Seng	17660.02	17660.02	0.00	3.22	1.32	3.59
Nikkei 225	36380.17	36203.22	0.49	2.13	-4.42	8.71
Shanghai	2717.28	2704.09	0.49	-0.17	-5.63	-8.66
EARLY MORNING MARKETS						
	LAST	CLOSE	% CHG	1D%	5D%	YTD%
TENCENT	386.00	380.00	1.58	0.00	2.65	30.94
BHP AUS	4000.00	3919.00	2.07	-0.91	-0.38	-18.01

NOTE : 5D% and 1M% are rolling percentage moves

INTERNATIONAL ECONOMIC CALENDAR | SELECTED EVENTS

TIME	AREA	TODAY'S EVENTS & RELEASES	PERIOD	EXP.	PREV.
13:00	ZA	Building Permits y/y	Jul	6.00%	-31.80%
13:00	GB	BoE Interest Rate Decision	---	5.00%	5.00%
14:30	US	Initial Jobless Claims	Sep	234K	230K
15:00	ZA	Interest Rate Decision	---	8.00%	8.25%
15:00	ZA	Prime Overdraft Rate	---	11.5%	11.8%
TIME	AREA	PREVIOUS SESSION'S RELEASES	PERIOD	EXP.	ACT.
8:00	GB	Inflation Rate y/y	Aug	2.10%	2.20%
10:00	ZA	Inflation Rate y/y	Aug	4.50%	4.40%
10:00	ZA	Core Inflation Rate y/y	Aug	4.30%	4.10%
13:00	ZA	Retail Sales y/y	Jul	3.50%	2.00%
20:00	US	Fed Interest Rate Decision	---	5.25%	5.00%

JSE ALL SHARE | BEST AND WORST ONE-DAY PERFORMERS

BEST ONE-DAY % PERFORMERS						
	CODE	CLOSE	1D%	5D%	YTD%	
Grindrod Ltd	GND	1550	2.72	4.66	35.25	
OUTsurance Group Limited	OUT	5670	2.62	12.39	34.36	
Pick n Pay Stores Ltd	PIK	2525	2.43	8.09	8.51	
AVI Ltd	AVI	10532	1.99	0.63	28.33	
Raubex Group Ltd	RBX	5550	1.82	9.97	100.22	
Hudaco Industries Ltd	HDC	18578	1.80	-0.12	15.66	
WORST ONE-DAY % PERFORMERS						
	CODE	CLOSE	1D%	5D%	YTD%	
PPC Limited	PPC	378	-8.92	-4.30	-5.26	
Metair Investments Ltd	MTA	1507	-6.16	0.40	-15.10	
Brait PLC	BAT	118	-4.84	6.31	-35.16	
NEPI Rockcastle N.V.	NRP	14245	-4.01	-4.05	12.72	
Thungela Resources Ltd	TGA	10437	-3.98	-0.09	-32.14	

DIVIDEND DATA

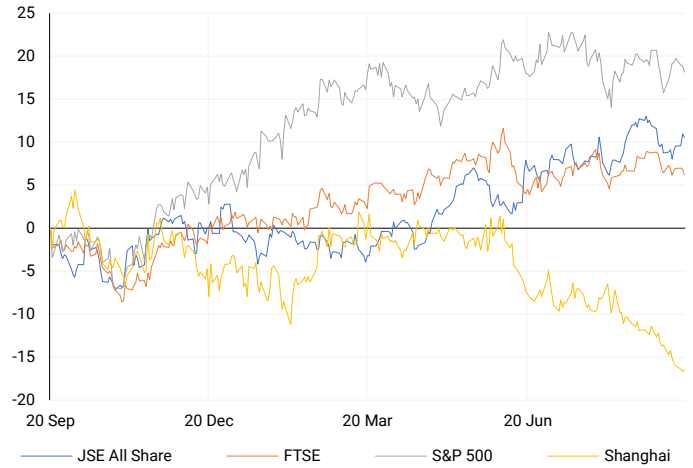
COMPANY	CODE	EXPECTED DIVIDEND	COMPANY	CODE	EXPECTED DIVIDEND
Bid Corporation	BID	565 ZARc	Sun International	SUI	161 ZARc
British American Tobacco plc	BTI	58.8 GBPp	The Bidvest Group	BVT	447 ZARc
Cashbuild	CSB	236 ZARc	Woolworths Holdings	WHL	117 ZARc
City Lodge Hotels	CLH	9 ZARc	---	---	---
Shoprite Holdings	SHP	445 ZARc	---	---	---

SOURCES | JSE, IRESS, MONEYWEB, CNBC, BBC, CNN

PLEASE SEE THE BOTTOM OF THE LAST PAGE FOR THE FULL DISCLAIMER

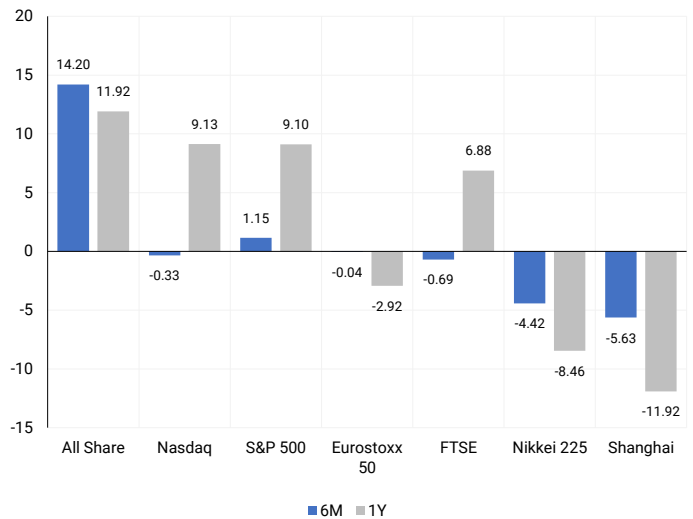
INTERNATIONAL INDICES

Normalised percentage performances - In rand terms



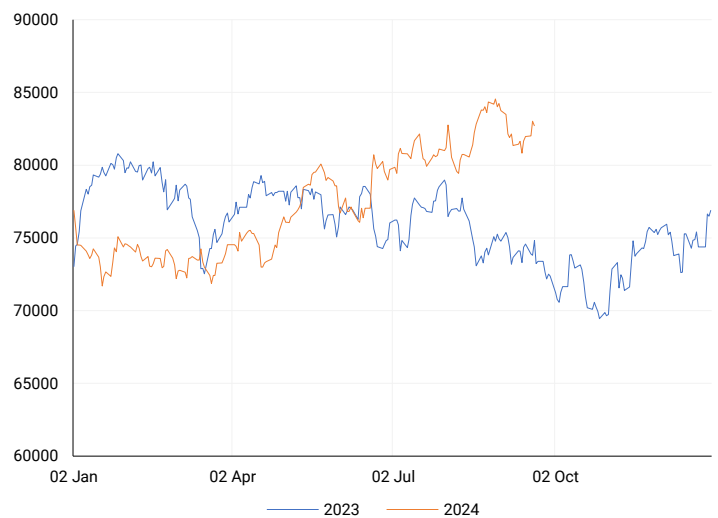
INTERNATIONAL INDICES

6-month & 1-year percentage performances



JSE ALL SHARE INDEX

2023 v 2024 to date



Last date to trade Mon, 23 September

LOCAL EQUITIES | JSE LARGE CAP COMPANIES (Cents Per Share)

COMPANY	CLOSE	PREVIOUS	1D%	5D%	1M%	YTD%
Absa Group Limited	17081	17140	-0.34	3.68	8.27	4.34
Anglo American plc	49077	49430	-0.71	4.73	-2.19	3.65
Anglo American Plat Ltd	56750	57735	-1.71	11.94	-13.89	-41.13
Anglogold Ashanti Ltd	48098	49654	-3.13	-0.33	-13.18	36.10
Anheuser-Busch InBev SA NV	112200	113644	-1.27	-2.86	4.06	-6.51
BHP Group Limited	46779	47331	-1.17	4.02	-0.69	-26.15
BID Corporation Ltd	44400	44533	-0.30	-0.40	1.81	4.07
British American Tob plc	66580	67341	-1.13	-4.08	4.18	22.95
Compagnie Fin Richemont	245700	249977	-1.71	-1.88	-9.90	-4.31
Capitec Bank Hldgs Ltd	299500	300600	-0.37	-0.36	5.65	47.80
Discovery Ltd	15870	15657	1.36	6.90	5.91	10.45
Firststrand Ltd	8358	8300	0.70	-2.38	0.77	13.70
Gold Fields Ltd	25680	25810	-0.50	9.28	-12.20	-7.55
Glencore plc	8816	8844	-0.32	4.20	-5.53	-21.04
Impala Platinum Hlgs Ltd	9238	9436	-2.10	27.00	7.28	1.22
Kumba Iron Ore Ltd	34134	35150	-2.89	2.63	-4.70	-44.48
Mondi plc	33110	33500	-1.16	0.65	-1.89	-8.79
MTN Group Ltd	9436	9371	0.69	2.57	6.44	-18.30
Naspers Ltd -N-	352500	353782	-0.36	0.06	-3.90	12.69
Prosus N.V.	63396	63994	-0.93	-0.63	-3.12	13.13
South32 Limited	3705	3827	-3.19	4.99	5.68	-12.18
Standard Bank Group Ltd	24030	23875	0.65	5.44	2.62	15.47
Shoprite Holdings Ltd	30164	30100	0.21	1.64	-1.58	9.67
Sanlam Limited	8659	8698	-0.45	2.34	2.16	18.94
Sasol Limited	12455	12627	-1.36	6.73	-8.85	-32.78
Sibanye Stillwater Ltd	1823	1870	-2.51	29.29	-0.76	-26.79
Vodacom Group Ltd	11140	11178	-0.34	1.00	5.99	5.09

SOUTH AFRICAN MARKET SUMMARY

SELECTED ITEMS

The Top-40 index on the stock market closed 0.44% lower. South Africa's inflation dropped to 4.4% in August, the lowest since April 2021, leading to expectations that the central bank may cut interest rates soon. Discovery Health announced an 11% increase in contributions for its high-end medical plans and a 10.9% increase for its coastal plans starting January 2025. Meanwhile, Grindrod Mauritius plans to acquire the remaining 35% stake in Terminal de Carvão da Matola (TCM) at Maputo Port.

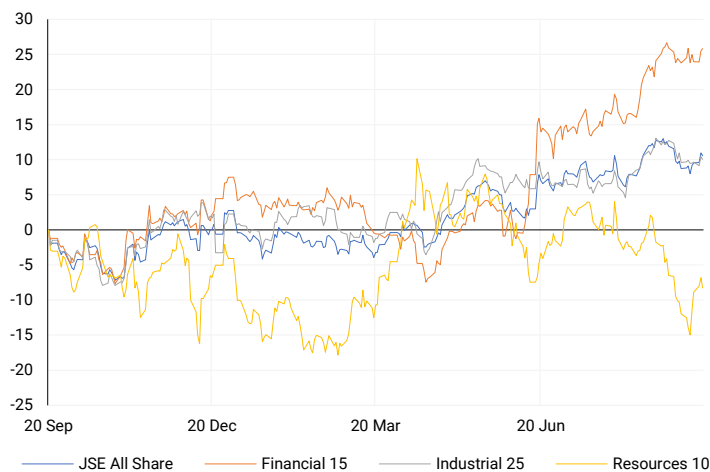
JSE ALL SHARE

One-year



LOCAL INDICES

Normalised percentage performances



LOCAL SENS ANNOUNCEMENTS

SELECTED RELEASE

RAUBEX GROUP LIMITED – Trading Statement

Raubex expects strong results for the six months ending 31 August 2024, driven by solid performances in its Construction Materials, Roads and Earthworks, and Infrastructure Divisions. The company anticipates an increase in headline earnings per share (HEPS) to between 275.2 and 294.2 cents, up 45-55% from the 189.8 cents reported in the same period last year. Similarly, earnings per share (EPS) are expected to rise to between 279.9 and 299.2 cents, also reflecting a 45-55% increase from the previous year's 193.0 cents.

RBX | 1.82% OPEN | 5501c HIGH | 5898c LOW | 5428c CLOSE | 5550c TIME | 07:15

METAIR INVESTMENTS LIMITED –Trading Statement

Metair is finalizing its interim results and has informed shareholders that it expects to report a loss per share of between 2.7 and 3.3 cents, a significant drop from the 48 cents in earnings per share reported in the first half of 2023. Similarly, the headline loss per share is expected to be between 2.7 and 3.3 cents, compared to headline earnings per share of 41 cents in the same period last year.

MTA | -6.16% OPEN | 1605c HIGH | 1665c LOW | 1401c CLOSE | 1507c TIME | 07:05

EXPECTED COMPANY REPORTING SCHEDULE

COMPANY	CODE	RELEASE	DATE
Discovery	DSY	Final	19 Sep '24
Remgro	REM	Final	20 Sep '24
Gemfields	GML	Interim	22 Sep '24
Texton	TEX	Final	23 Sep '24
Old Mutual	OMU	Interim	26 Sep '24

BANK AND OTHER SELECTE PREFERENCE SHARES

COMPANY	CODE	CLOSE	CLEAN YIELD	NEXT LDT (Est.)
Investec Limited	INPR	8851	11.24	Thu, 06 Jun '24
Standard Bank	SBPP	8851	11.15	Thu, 05 Sep '24
Absa	ABSP	81494	11.48	Thu, 12 Sep '24
Capitec	CPIP	10485	9.69	Thu, 19 Sep '24
Steinhoff	SHFF	9734	10.47	Thu, 17 Oct '24
Grindrod	GNDP	9000	12.22	Thu, 19 Sep '24
Netcare	NTCP	8200	11.82	Thu, 31 Oct '24
Discovery	DSBP	9399	11.91	Thu, 19 Sep '24
Invicta	IVTP	---	13.41	Thu, 27 Jun '24

LOCAL EQUITIES | JSE MID CAP COMPANIES (Cents Per Share)

COMPANY	CODE	CLOSE	PREVIOUS	1D%	1M%	YTD%
Aspen Pharmacare Hldgs Ltd	APN	19049	19461	-2.12	-17.13	-6.39
African Rainbow Min Ltd	ARI	17428	17951	-2.91	-5.38	-12.86
AVI Ltd	AVI	10532	10326	1.99	6.38	28.33
Barloworld Ltd	BAW	8330	8282	0.58	-9.89	5.44
Bidvest Ltd	BVT	28252	28197	0.20	-0.35	11.98
Bytes Technology Grp PLC	BYI	10969	10929	0.37	0.61	-23.41
Capital&Counties Prop plc	CCO	3508	3544	-1.02	4.16	7.94
Clicks Group Ltd	CLS	38400	37972	1.13	7.70	17.90
Dis-Chem Pharmacies Ltd	DCP	3550	3564	-0.39	-1.93	15.67
Exxaro Resources Ltd	EXX	15603	15699	-0.61	-8.11	-23.69
Fortress Real Est INV B	FFB	2029	2005	1.20	13.80	41.30
Growthpoint Prop Ltd	GRT	1400	1413	-0.92	3.86	19.86
Harmony GM Co Ltd	HAR	17284	17948	-3.70	-6.50	44.53
Hammerson plc	HMN	708	698	1.43	7.60	4.12
Investec Ltd	INL	13648	13743	-0.69	-0.26	8.67
Investec plc	INP	13560	13738	-1.30	-0.99	7.66
Italtile Ltd	ITE	1189	1220	-2.54	-3.25	6.16
Life Healthc Grp Hldgs Ltd	LHC	1563	1582	-1.20	16.73	-14.92
MultiChoice Group Ltd	MCG	10726	10780	-0.50	-2.15	32.39
Montauk Renewables Inc	MKR	8320	8301	0.23	3.02	-51.63
Mr Price Group Ltd	MRP	24153	23992	0.67	5.92	54.03
Momentum Met Hldgs Ltd	MTM	2832	2838	-0.21	3.55	29.37
Ninety One Plc	N91	3828	3830	-0.05	-1.52	-11.22
Nedbank Group Ltd	NED	29141	29024	0.40	-1.22	34.77
Northam Platinum Hldgs Ltd	NPH	10857	10898	-0.38	-11.92	-22.69
NEPI Rockcastle N.V.	NRP	14245	14840	-4.01	1.37	12.72
Netcare Limited	NTC	1428	1409	1.35	8.02	0.28
Ninety One Limited	NY1	3850	3862	-0.31	0.44	-10.40
Old Mutual Limited	OMU	1283	1265	1.42	4.39	-1.76
OUTsurance Group Ltd	OUT	5670	5525	2.62	18.97	34.36
Pick n Pay Stores Ltd	PIK	2525	2465	2.43	9.45	8.51
Pepkor Holdings Ltd	PPH	2299	2286	0.57	8.65	17.12
Quilter Plc	QLT	3064	3071	-0.23	-8.15	26.19
Redefine Properties Ltd	RDF	500	499	0.20	11.61	29.87
Remgro Ltd	REM	14869	14900	-0.21	6.13	-8.49
Resilient REIT Limited	RES	5980	5966	0.23	11.57	35.02
Reinet Investments S.C.A	RNI	47359	47259	0.21	1.00	1.58
Sappi Ltd	SAP	4756	4784	-0.59	6.23	7.60
Santam Limited	SNT	35200	36086	-2.46	-0.51	22.83
The Spar Group Ltd	SPP	13145	12942	1.57	4.33	11.49
Sirius Real Estate Ltd	SRE	2307	2335	-1.20	3.55	4.15
Tiger Brands Ltd	TBS	24000	24000	0.00	6.71	19.23
Transaction Capital Ltd	TCP	252	258	-2.33	-12.20	-68.42
The Foschini Group Limited	TFG	14428	14418	0.07	5.27	30.03
Thungela Resources Ltd	TGA	10437	10870	-3.98	-16.50	-32.14
Telkom SA SOC Ltd	TKG	2668	2698	-1.11	11.26	-10.29
Truworths Int Ltd	TRU	9852	9948	-0.97	2.72	32.51
Woolworths Holdings Ltd	WHL	6500	6498	0.03	0.34	-9.97
Zeda Limited	ZZD	1365	1360	0.37	10.17	7.06

LOCAL EQUITIES | JSE SMALL CAP COMPANIES (Cents Per Share)

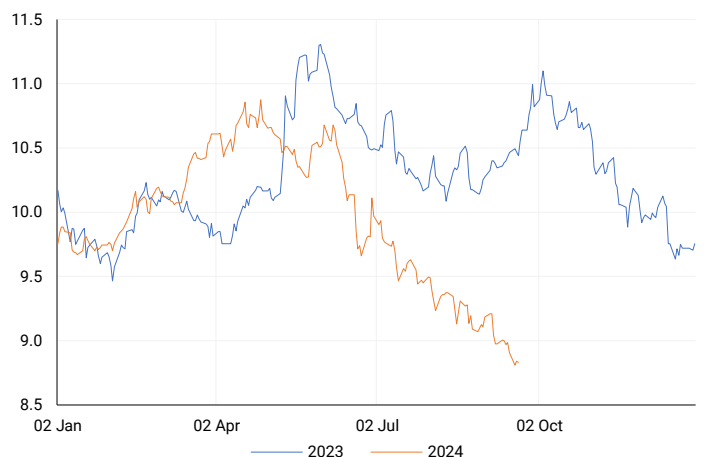
COMPANY	CODE	CLOSE	PREVIOUS	1D%	1M%	YTD%
ArcelorMittal SA Limited	ACL	120	123	-2.44	-3.23	-26.83
ADVTECH Ltd	ADH	3024	3076	-1.69	-0.85	23.23
Altron Limited A	AEL	1652	1696	-2.59	-4.23	61.17
AECI Limited	AFE	10346	10370	-0.23	-3.31	-5.68
Alexander Forbes Grp Hldgs	AFH	665	671	-0.89	-2.78	0.76
Afrimat Limited	AFT	6705	6736	-0.46	6.43	6.43
African Rainbow Cap Inv	AIL	735	730	0.68	19.51	50.31
Adcock Ingram Hldgs Ltd	AIP	6551	6735	-2.73	14.95	9.00
Astral Foods Ltd	ARL	17765	17800	-0.20	3.34	21.20
Attacq Limited	ATT	1320	1316	0.30	17.33	43.17
Brait PLC	BAT	118	124	-4.84	34.09	-35.16
Blue Label Telecoms Ltd	BLU	473	481	-1.66	10.00	21.91
Burstone Group	BTN	930	930	0.00	15.24	16.25
Coronation Fund Mngrs Ld	CML	3639	3658	-0.52	-5.48	16.78
Curro Holdings Limited	COH	1300	1299	0.08	7.71	11.59
Cashbuild Ltd	CSB	16196	16120	0.47	5.05	-2.98
DRD Gold Ltd	DRD	1596	1610	-0.87	-7.59	1.20
Datatec Ltd	DTC	3571	3594	-0.64	1.85	-11.83
Emira Property Fund Ltd	EMI	1079	1070	0.84	-1.01	26.20
Equites Prop Fund Ltd	EQU	1449	1462	-0.89	7.81	3.87
Famous Brands Ltd	FBR	5477	5508	-0.56	-2.28	-5.45
Fairvest Limited B	FTB	458	452	1.33	6.76	33.14
Grindrod Ltd	GND	1550	1509	2.72	0.00	35.25
Hosken Cons Inv Ltd	HCI	18233	18530	-1.60	1.12	-10.00
Hudaco Industries Ltd	HDC	18578	18250	1.80	2.93	15.66
Hyprop Inv Ltd	HYP	4373	4337	0.83	24.30	40.57
JSE Ltd	JSE	11971	12069	-0.81	10.10	29.50
KAP Industrial Hldgs Ltd	KAP	333	334	-0.30	7.77	27.10
Karoo0000 Ltd	KRO	71602	73860	-3.06	7.19	50.74
PSG Konsult Limited	KST	1750	1750	0.00	4.23	14.01
Libstar Holdings Ltd	LBR	400	401	-0.25	0.00	14.29
Lighthouse Properties plc	LTE	810	800	1.25	-2.41	10.20
Industrials REIT Limited	MLI	2.4	1.82858	31.25	71.43	242.86
MAS P.L.C	MSP	1839	1832	0.38	4.49	6.24
Metair Investments Ltd	MTA	1507	1606	-6.16	10.00	-15.10
Motus Holdings Ltd	MTH	11848	11681	1.43	7.22	16.73
Murray & Roberts Hldgs	MUR	289	280	3.21	-0.34	93.96
Oceana Group Ltd	OCE	6630	6561	1.05	-5.42	-6.18
Omnia Holdings Ltd	OMN	6302	6382	-1.25	5.12	-3.59
Pan African Resource plc	PAN	746	756	-1.32	9.22	82.40
PPC Limited	PPC	378	415	-8.92	-5.74	-5.26
Raubex Group Ltd	RBX	5550	5451	1.82	27.79	100.22
RFG Holdings Limited	RFG	1496	1510	-0.93	-4.71	10.81
Reunert Ltd	RLO	7760	7731	0.38	4.68	29.46
SA Corp Real Estate Ltd	SAC	308	308	0.00	11.19	32.76
Super Group Ltd	SPG	2470	2562	-3.59	-5.18	-16.97
Stor-Age Prop REIT Ltd	SSS	1517	1534	-1.11	6.91	16.16
Southern Sun LTD	SSU	700	690	1.45	12.90	33.33
Sun International Ltd	SUI	4500	4503	-0.07	13.41	9.76
Tharisa plc	THA	1776	1800	-1.33	-6.53	17.54
Tsogo Sun Gaming Ltd	TSG	1223	1245	-1.77	6.35	-0.16
Vukile Property Fund Ltd	VKE	1868	1882	-0.74	8.29	32.29
Wilson Bayly Hlm-Ovc Ltd	WBO	22312	22047	1.20	20.62	71.55

10-YEAR BOND YIELD | SELECTED ITEMS (Basis Point Change)

REGION	YIELD	1D	1M	1Y
United States	3.72%	7	-16	--
United Kingdom	3.84%	8	-8	-54
Germany	2.19%	5	-6	-52
Japan	0.84%	2	-3	--
South African 10Y	8.85%	-1	-43	-164

SOUTH AFRICAN 10-YEAR

2023 vs 2024 to date



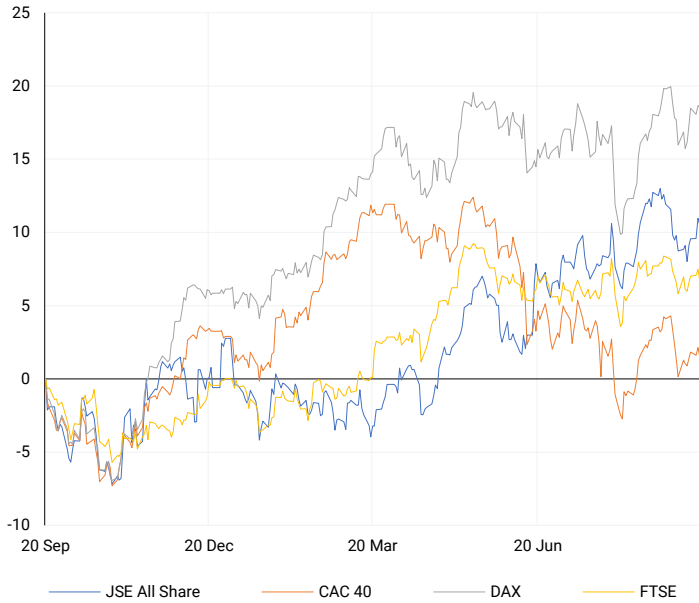
GLOBAL INTEREST RATES | SELECTED ITEMS

REGION	DATE CHANGED	CURRENT RATE
United States	Jul '23	5.25%-5.50%
United Kingdom	Aug '24	5.00%
European	Sep '24	3.65%
SA Repo Rate	May '23	8.25%
SA Prime Rate	May '23	11.75%

SOURCES | JSE, IRESS, MONEYWEB, CNBC, BBC, CNN

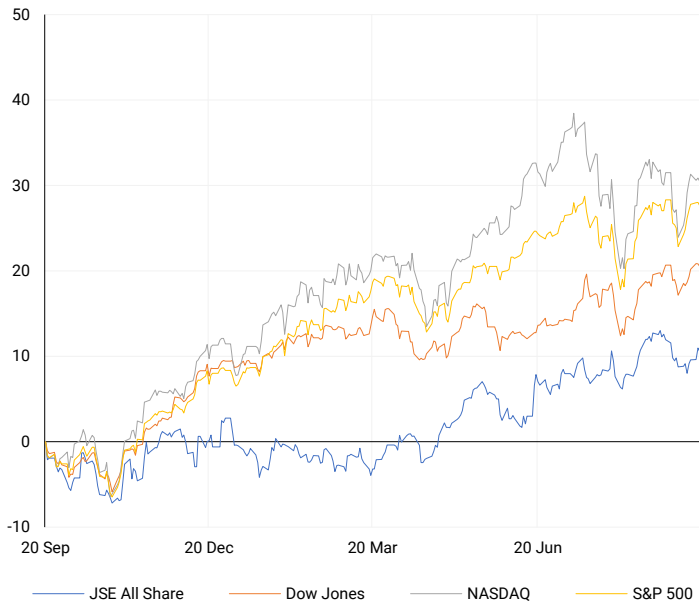
EUROPEAN INDICES

Normalised percentage performances



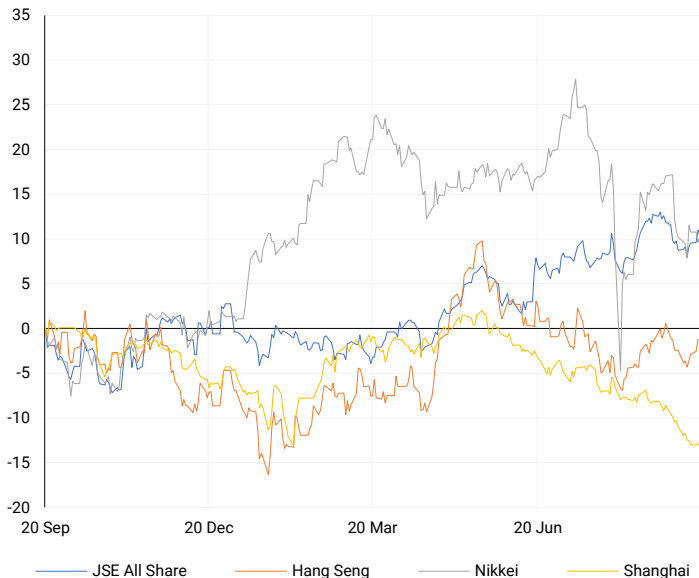
AMERICAN INDICES

Normalised percentage performances



ASIAN INDICES

Normalised percentage performances



EUROPEAN MARKET SUMMARY

SELECTED ITEMS

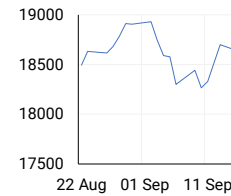
European markets closed lower on Wednesday as investors assessed key regional data. In the U.K., inflation for August remained steady at 2.2%, matching July's figure and meeting expectations. This data comes just ahead of the Bank of England's meeting on Thursday, where they will decide on interest rate policy.

EUROPEAN INDICES	CLOSE	PREVIOUS	1D%	5D%	1M%	YTD%
CAC 40	7444.18	7487.42	-0.58	0.64	-0.07	-1.31
DAX 30	18711.49	18726.08	-0.08	2.08	2.12	11.70
Eurostoxx 50	4837.10	4861.80	-0.51	1.47	-0.04	6.98
FTSE	8253.68	8309.86	-0.68	0.73	-0.69	6.73

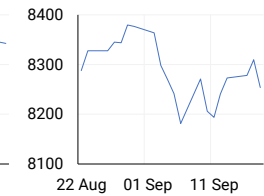
CAC 40



DAX



FTSE



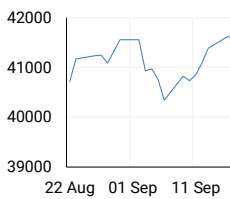
AMERICAN MARKET SUMMARY

SELECTED ITEMS

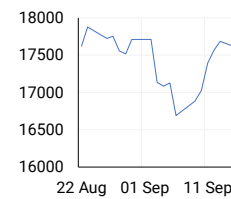
U.S. stocks ended Wednesday with slight losses, falling from earlier highs after the Federal Reserve announced a 50-basis point interest rate cut, its first in over four years. Trading was volatile, with the S&P 500 swinging between gains and losses, briefly rising 1% before closing lower. Both the Dow and S&P 500 reached intraday highs before weakening. Fed Chair Jerome Powell indicated that the rate cut did not suggest an urgent need for further action.

AMERICAN INDICES	CLOSE	PREVIOUS	1D%	5D%	1M%	YTD%
Dow Jones	41503.10	41606.18	-0.25	1.57	2.07	10.12
Nasdaq	17573.30	17628.06	-0.31	1.02	-0.33	17.07
S&P 500	5618.26	5634.58	-0.29	1.15	1.15	17.79
US VIX	18.23	17.61	3.52	3.05	23.18	46.43

DOW JONES



NASDAQ



S&P 500



ASIAN MARKET SUMMARY

SELECTED ITEMS

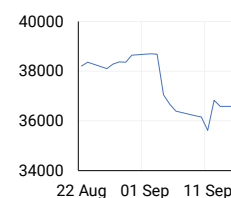
Asia-Pacific markets rose in volatile trading this morning. The Bank of Japan is beginning a two-day meeting, concluding tomorrow, where a key interest rate decision will be made following the end of its ultra-low interest rate policy earlier this year. Taiwan's central bank is also expected to announce a rate decision today, alongside updated forecasts for economic growth and inflation for the year.

ASIAN INDICES	CLOSE	PREVIOUS	1D%	5D%	1M%	YTD%
Hang Seng	17660.02	17660.02	0.00	3.22	1.32	3.59
Nikkei 225	36380.17	36203.22	0.49	2.13	-4.42	8.71
Shanghai	2717.28	2704.09	0.49	-0.17	-5.63	-8.66

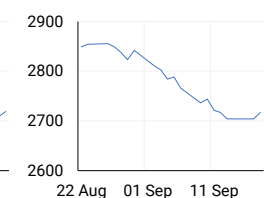
HANG SENG



NIKKEI



SHANGHAI



COMMODITIES MARKET SUMMARY

SELECTED ITEMS

Gold prices fell to \$2,553.67 an ounce, after reaching record highs earlier in the week. Meanwhile, oil prices dropped during Asian trading this morning, as a larger-than-expected interest rate cut by the Federal Reserve raised concerns about the U.S. economy.

COMMODITY	LAST	CLOSE	% CHG	1D%	5D%	YTD%
Brent Crude	73.66	72.94	0.99	-1.03	3.17	-5.37
Gold	2563.19	2559.27	0.15	-0.40	1.90	24.06
Palladium	1069.64	1058.31	1.07	-5.34	3.77	-3.55
Platinum	977.64	972.25	0.55	-1.41	1.66	-1.52
Silver	30.37	30.08	0.96	-1.99	4.84	26.45

BRENT CRUDE

One-year



PLATINUM

One-year



GOLD

One-year



CURRENCY PAIR	LAST	CLOSE	% CHG	1D%	5D%	YTD%
USDZAR	17.52	17.55	-0.15	-0.33	-2.00	-4.25
GBPZAR	23.14	23.18	-0.18	0.05	-0.72	-0.49
EURZAR	19.48	19.51	-0.15	-0.31	-1.05	-3.38
AUDZAR	11.90	11.87	0.23	-0.24	-0.64	-4.71
EURUSD	1.11	1.11	0.00	0.03	0.97	0.74
USDJPY	143.17	142.28	0.63	-0.10	-0.06	0.88
GBPUSD	1.32	1.32	-0.03	0.40	1.31	3.78
USDCHF	0.85	0.85	0.25	-0.11	-0.71	0.55

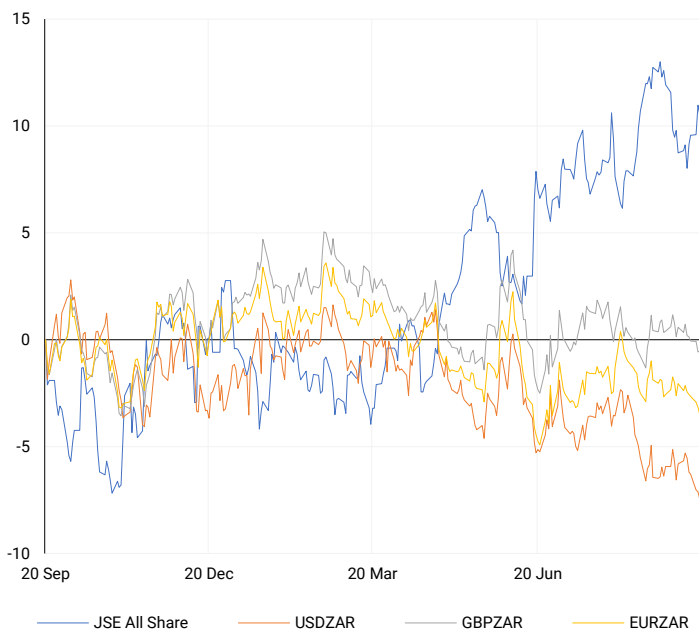
CURRENCY MARKET SUMMARY

SELECTED ITEMS

The South African rand strengthened to a near 14-month high on Wednesday, supported by expectations of a U.S. Federal Reserve interest rate cut and a larger-than-expected drop in local inflation. Meanwhile, the U.S. dollar rebounded this morning after an earlier dip following the Federal Reserve's significant interest rate cut, which had been mostly anticipated by the markets.

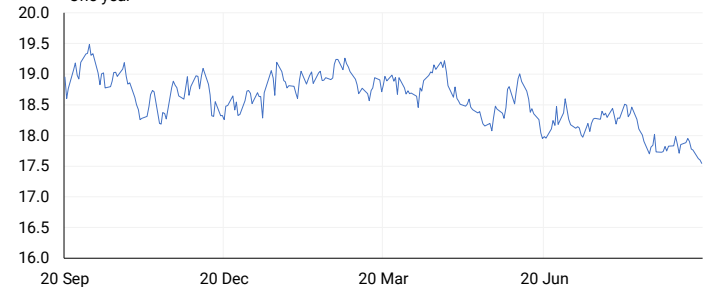
CURRENCY PAIRS vs JSE ALL SHARE

Normalised percentage performances



USDZAR

One-year



EURUSD

One-year



SOURCES | JSE, IRESS, MONEYWEB, CNBC, BBC, CNN

Disclaimer: This note is prepared for Sanlam Private Wealth (Pty) Ltd, by K2013143132 (Pty) Ltd trading as ThompsonGreen. ThompsonGreen is an independent company contracted to Sanlam Private Wealth (Pty) Ltd. The views expressed in this note are those of ThompsonGreen and/or its analysts and not necessarily the views of Sanlam Private Wealth (Pty) Ltd, Sanlam or any officer or agent thereof. K2013143132 (Pty) Ltd trading as ThompsonGreen is a research house and not a registered broker, financial adviser or financial service provider. Our editors and customer services teams also do not give personal investment advice. The information in this document is general advice only and may not be appropriate to your particular investment objectives, financial situation or particular needs. Before investing, or if you are in any doubt about your personal situation, you should seek professional advice from a stockbroker or independent financial adviser authorised by the Financial Sector Conduct Authority.